

BEARNES  
HAMPTON  
&  
LITTLEWOOD

Auctioneers and Valuers

Tuesday  
13th February 2024

20th CENTURY & CONTEMPORARY



## **SALEROOM**

St Edmund's Court, Okehampton Street, Exeter EX4 1DU  
Telephone 01392 413100  
enquiries@bhandl.co.uk | www.bhandl.co.uk

## **CHAIRMAN**

C. Beadman M.A. MRICS

## **MANAGING DIRECTOR**

R.E. Littlewood B.A. (Hons)

## **DIRECTORS**

N.J. Saintey A.S.F.A.V., B. Goodison-Blanks B.A. (Hons).

## **VALUATIONS**

**Inheritance Tax Assessment and Probate:** Bearnès Hampton & Littlewood Probate Valuation Department offer a complete and comprehensive service to Executors, Solicitors and Bank Trustees administering an Estate containing all forms of art and antiques including Books, Ceramics, Clocks, Furniture, Jewellery, Pictures, Silver, Works of Art including collections of coins and stamps.

**Insurance:** Bearnès Hampton & Littlewood are specialists with over sixty five years experience in preparing insurance valuations and inventories for the purpose of substantiating claims in the event of losses resulting from accident, fire or theft.

Bearnès Hampton & Littlewood will be pleased to give preliminary advice, without charge or obligation to clients considering a valuation for Insurance, Capital Gains Tax, Family Division or other purposes.

For further information please contact: Cristian Beadman

## **ADMINISTRATION**

Company Secretary: Susan Tharby  
Head of Client Accounts: Laura Hayward

## **SPECIALIST DEPARTMENTS**

Books, Manuscripts and Photographs	Gerard d'Erlanger Roger Collicott (Consultant)
Ceramics and Glass	Nicholas Saintey, Andrew Thomas (Consultant)
Clocks	Leigh Extence
Furniture	Cristian Beadman
Jewellery	Andrea Machen
Maritime, Sporting and Collectors Items	Brian Goodison-Blanks
Pictures	David Vyvyan-Robinson
Silver	Sam Tuke
Works of Art	Cristian Beadman
Trainee Valuer	Pola Durajska
Valuations for Probate and Insurance	Cristian Beadman
Head Photographer	Ian Jackson
Photographers	Natalia Boczar, Daisy Copping

## **SALE ADVICE**

Bearnès Hampton & Littlewood make no charge for giving verbal advice on items brought to their offices which are open: Monday to Friday 9.00am to 5.15pm and Saturdays when on view 9.00am to 12 noon. Alternatively a representative will be pleased to call by appointment without charge or obligation.

Dorset Ambassador: Sally Bartlett - 01308 456208  
Cornwall Representative: Richard Hamm - 01208 813593  
Isle of Wight Representative: Tim Smith - 07966 989356

Bearnès Hampton & Littlewood Ltd. Registered in England No. 3857887  
Registered Office: St. Edmund's Court, Okehampton Street, Exeter

# 20th Century & Contemporary

## Tuesday 13th February 2024

Auction commences at 10.00am

### ON VIEW:

Friday 9th February 9.00am to 5.15pm

Saturday 10th February 9.00am to 12.00 noon

Monday 12th February 9.00am to 5.15pm

Tuesday 13th February from 9.00am



### SALE ENQUIRIES:

Nic Saintey (Ceramics): nsaintey@bhandl.co.uk

David Vyvyan-Robinson (Paintings): dvr@bhandl.co.uk

Cristian Beadman (Furniture): cbeadman@bhandl.co.uk

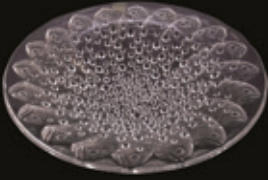
*Illustrated Catalogue £8 (£10 by post)*



Members of the Society of Fine Art Auctioneers  
Front cover Lot 215, back cover lot 438.

When leaving commission bids this sale may be  
referred to as CC10





1  
A Lalique Cristal bowl, Roscoff, of circular form the exterior intaglio moulded with multiple fish heads amongst bubbles, diamond point etched on the rim Lalique France, 35cm diameter.  
\*£200 - 300



2  
A Lalique Cristal bowl, Nemours, of circular form the exterior intaglio moulded with black centred flower heads, diamond point etched Lalique France, 25.5cm diameter.  
\*£200 - 300



3  
A Lalique Cristal figure 'Tortue Caroline', diamond point etched Lalique France, 15cm long.  
\*£80 - 120



4  
A pair of Murano cased glass vases, the red over white body of slender asymmetric form, 48cm high.  
\*£80 - 120



5  
An Art Deco table scent bottle of clear and amber flashed fan-shaped form with chrome mounts, 22.5cm high.  
\*£100 - 150



6  
A Murano cased glass vase of flattened tear drop form, the white over clear body with arbitrary black trailing, 36cm high.  
\*£50 - 80



7  
A Lalique Cristal figure  
'Perruches', diamond  
point etched Lalique  
France, 15cm high.  
\*£80 - 120



8  
A Lalique Cristal figure  
'Pedrix Inquiete',  
diamond point etched  
Lalique France, 16cm  
long.  
\*£80 - 120



9  
A Lalique Cristal car  
mascot 'Coc Nain',  
diamond point etched  
Lalique France, 21cm  
high.  
\*£180 - 220



10  
A Lalique Cristal flacon,  
Les Elfes, Edition 2002,  
sealed with contents  
certificate and fitted box.  
\*£100 - 150



11  
A Murano glass hen and  
cockerel figures, the  
combed black over white  
bodies with tooled red  
and black detailing, 19  
and 27cm high.  
\*£50 - 80



12  
A Whitefriars knobbly  
glass vase, after the  
original by William Wilson  
and Harry Dyer, under  
streaky green and clear  
colouring, 24cm high.  
\*£40 - 60



13  
Two Murano cased glass vases, one of slender oviform with flaring neck with speckled brown decoration over white, the companion of baluster form with frill rim with veined brown decoration over white, 45 and 25cm high.  
\*£50 - 80



14  
Two pieces of Lalique Cristal, comprising a Nogent circular pedestal bon bon dish diamond point etched Lalique France, 14cm diameter and a Nemours powder box and cover, diamond point etched Lalique France, 11cm diameter.  
\*£200 - 300



15  
Two Orrefors glass Corona bowls after a design by Lars Hellsten together with an Orrefors glass Lotus vase, a Marquis Waterford bowl, a small Scailmont ruby glass tazza and a bowl.  
\*£50 - 70



16  
Two Lalique Cristal butterflies in yellow, both diamond point etched Lalique France, together with two clear glass animal figures.  
\*£60 - 80



17  
A Lalique Cristal flacon 'Samoa', 8cm high, together with a small dish 'Honfluer', 15cm diameter and another 'Irene', 9.5cm diameter, each diamond point etched Lalique France. [3]  
\*£120 - 180



18  
Three Mats Jonasson clear glass paperweights, each intaglio decorated with a lion, rhino and a marlin.  
\*£150 - 180

• denotes lots affected by Artist's resale rights - refer to conditions of sale.



19

• John Maltby [1936-2020] a stoneware plaque, of rectangular form modelled in relief with a dog leaping through a night sky, applied personal seal lower right, mounted and framed, inscribed verso John Maltby 2011, 'The dog in the Park', 23 x 33cm overall.

\*£300 - 500



20

• Laurel Keeley [b.1952] a large stoneware dish, of slab built rectangular form, the centre with a panel incised with fish and the caption 'if you had no net curtains, you might see' within a floral lace impressed border, incised to the underside 'Laurel Keeley, out the window, 1995, 49cm long.

\*£300 - 500



21

• Paul Jackson [Contemporary], a group of terracotta of polygonal form comprising a jug, 25cm high, a large bowl 32cm wide and five smaller bowls, 16cm wide, each incised with coloured flowers and foliage on an ivory ground, the jug, larger bowl and two smaller with incised signature the former dated '88'. [7]

\*£250 - 350



22

• Laurel Keeley [b.1952] a large slab built dish, of oval form the interior incised with fish amongst linear and banded decoration on an ivory ground, 60cm long, incised signature verso.

\*£300 - 500

23-4 No Lots



25  
A group of Davidson pressed frosted Jet Black glass, comprising three footed vases, pattern no. 1, three similar, pattern no. 50, a facet cylinder vase, pattern no. 279, a bowl, pattern no. 1910M, together with a stand and three smaller glossy stands. [11]

\*£50 - 70



26  
A group of Davidson pressed Jade glass, comprising four faceted cylinder jars, pattern no. 279, two trumpet vases, pattern no. 51, two footed vases, pattern no. 294, one similar, a dish, flower frog and a plate. [12]

\*£50 - 70



27  
A group of Davidson pressed Amber Cloud glass, comprising four flower bowls, pattern no. 1910BD, a bowl, pattern no. 1910M, seven further bowls, three with covers, four flower frogs, a shallow dish, a faceted cylinder vase, pattern no. 279, and three others, pattern nos. 50, 51 and 294.

\*£30 - 50



28  
A group of Davidson pressed Green and Green Cloud glass, comprising three pedestal vases, pattern no. 1, another pattern no. 50, two faceted cylinder vases pattern 259, three bowls, pattern nos. 1910SD and 1910MD, an oviform vase, together with four further bowls, eight flower frogs, and three stands.

\*£30 - 50



29  
A large group of Davidson pressed Blue and Purple Cloud glass, comprising faceted cylinder vases, pattern no. 279, five footed vases, pattern nos. 50, 51, 293, 294 and one other, six various bowls, six stands, a jug, five beakers and four flower frogs.

\*£60 - 80



30  
Margaret Johnson [Contemporary] twelve glass vases, of varying form each decorated with silk straw on coloured grounds, tallest 30cm high.

\*£80 - 120

• denotes lots affected by Artist's resale rights - refer to conditions of sale.





30A

A Schneider Art Deco orange glass compot, set on a waisted black and clear striped metal scroll and foliate base with applied glass berries, 34cm diameter.

\*£200 - 300



31

Toni Zuccheri for Venini 'Ninfee', a large mould blown bowl, the clear and green striated body in the form of a shell, with fold over rim, diamond point etched to the base, Venini Italia, 52cm wide.

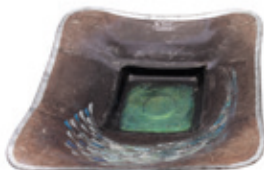
\*£500 - 800



32

A Monart glass bowl, of shallow circular form of mottled green colour with aventurine banding below the rim, raised pontil to underside, 26cm diameter.

\*£50 - 70



33

Margaret Johnson [Contemporary] a glass dish of rounded square form decorated with silk straw, aventurine and silver leaf with an arcing shoal of fish, 43cm wide.

\*£80 - 120



34

A Whitefriars green cloudy glass bowl, pattern no.7170, after the original design by William Butler, 14cm high.

\*£50 - 80



35  
A Whitefriars cloudy green glass vase, of oviform, pattern no. 8109, after the original design by Joseph Francis, 26cm high.

\*£120 - 180



36  
Gino Cenedese Murano glass 'Peacock' vase, the white interior cased with combed orange, yellow and red exterior, paper label to base, 34cm high.

\*£100 - 150



37  
A Whitefriars green cloudy glass tumbler vase, after the original design by Marriott Powell, 20cm high.

\*£60 - 90



38  
A Whitefriars cased cinnamon glass vase, pattern no. 9651, modelled after an original by Geoffrey Baxter, 24cm high.

\*£50 - 80



39  
A Whitefriars cloudy green glass vase, modelled after a Roman original, pattern no. 1404, by Harry Powell, 20cm high.

\*£80 - 120



40  
A Whitefriars Minoan vase of oviform with threaded green decoration on a pale green ground, modelled after an original by Harry Powell, 22.5cm high.

\*£80 - 120

• denotes lots affected by Artist's resale rights - refer to conditions of sale.



41  
 • Deirdre Burnett [1938-2022] an oxidised stoneware Maiden vase, of compressed profile with arbitrary rim, the exterior with russet lava glazes the interior with ivory glazes, impressed personal seal near foot, 42cm high.

\*£250 - 300



42  
 • Chris Taylor [Contemporary] two grogged earthenware vases of shouldered cylinder form, with paper cut and coloured layered glazes and slips, the largest incised under the base CMT, 28 and 22cm high.

\*£100 - 150



43  
 • David Leach [1911-2005] a stoneware jug of generous proportions and of oviform with raised neck and applied strap handle with tenmoku glazed interior and speckled brown exterior, impressed personal seal near foot, 40cm high.

\*£200 - 250



44  
 • Jenifer Jones [b.1940] a white stoneware 'Mackerel-Shell vase', of oviform with incised and split shell neck under blue green glazes, applied personal seal near foot, 23cm high.

\*£50 - 80



45  
 • Doug Jones [b.1943], a stoneware jug of mildly lobed oviform with applied ribbed strap handle, with red glazed neck over oatmeal, incised Doug to underside, 26cm high, together with a white stoneware vase of flattened oviform under turquoise and volcanic white glazes, 31cm high.

\*£50 - 80



46  
 • John Mullin [Contemporary] a stoneware vase, of flattened footed form with shaped rim, the textured black ground with white panels painted in acrylic with a caribou and verso with a cockatoo, signed under the base, 48cm high.

\*£150 - 250

- 47  
**Three Whitefriars glass paperweights** with controlled bubble patterns, comprising a pale amber apple and pear modelled after the original by Ray Annenberg and a large green pear-shaped weight.  
 \*£50 - 80
- 50  
**Margaret Johnson [Contemporary] five glass vases and a bowl**, decorated with silk straw, gold and silver foil with shoals of fish on variously coloured grounds, tallest vase 28cm high.  
 \*£80 - 120
- 53  
**Margaret Johnson [Contemporary] a bowl and three glass vases**, the former of ribbed circular form and decorated with silk straw and silver foil with pressed flowers and texts from 'Sumer is icumen in' 31cm high, two globular vases decorated with fish on a graduating white blue ground and a red ground and a large vase decorated with abstract motifs.  
 \*£80 - 120
- 56  
**An Art Deco glass lemonade set**, the frosted body with blue linear and spotted decoration, comprising a jug and six glasses.  
 \*£40 - 60
- 48  
**Margaret Johnson [Contemporary] three glass dishes** one of circular form, one elliptical and the other of square form each decorated with silk straw, silver foil with shoals of fish on a clear and white ground, the latter signed upper centre, 30cm wide.  
 \*£80 - 120
- 51  
**Margaret Johnson [Contemporary] three glass plates and a bowl**, each of circular form decorated with silk straw, gold and silver foil on a green or blue ground, one plate and bowl signed, largest plate, 27cm diameter.  
 \*£80 - 120
- 54  
**Margaret Johnson [Contemporary] five glass vases and a lamp**, of varying form each decorated with silk straw and gold and silver foil with flying insects on a graduating blue green or white ground, tallest, 40.5cm high.  
 \*£80 - 120
- 57  
**Margaret Johnson [Contemporary] six glass vases a bowl and a night light**, of varying form each decorated with silk straw and gold and silver foil with fish, flowers or heart motifs on coloured grounds, tallest vase 23cm.  
 \*£80 - 120
- 49  
**A Vasart glass vase, of oviform, pattern no. VO41**, the mottled green body gathering to wrythen legs on the rim, 19cm high, together with a streaky green glass vase, attributed to Vasart and of trumpet shaped form, 14cm high. [2]  
 \*£80 - 120
- 52  
**Margaret Johnson [Contemporary] three glass dishes** of circular form decorated with silk straw and silver and gold foil with shoals of fish, on a red, pink and yellow ground, each signed lower centre, 24 and 30cm diameter.  
 \*£80 - 120
- 55  
**Margaret Johnson [Contemporary] three glass dishes** of square form decorated with silk straw and silver foil with shoals of fish on a blue or green ground, each signed lower centre, 22.5 and 18cm.  
 \*£80 - 120
- 58  
**An Art Deco glass cocktail set**, of pale amber colour with red and black banded decoration, comprising a circular tray, decanter and six glasses.  
 \*£40 - 60

• denotes lots affected by Artist's resale rights - refer to conditions of sale.



47



48



49



50



51



52



53



54



55



56



57



58

\* All lots subject to a buyers premium of 25% plus vat @ 20%



59

• Clive Bowen [b.1943] an earthenware jug of oviform with ribbed strap handle decorated with green and brown slip trails on a mustard ground, 26cm high.

\*£60 - 80



60

• Laurel Keeley [b.1952] two slab built stoneware vases, the first of flattened elliptical profile, under white and blue crazed and coloured slips, incised 'Laurel Keeley 2015', 26cm high, together with a cylinder vase with incised vertical lines and a single band of gold incised 'Laurel Keeley 13', 17cm high.

\*£150 - 200



61

Attributed to Nic Collins, a stoneware candlestick the squat globular base with three raised and ribbed necks of differing heights under flown russet glazes, 22cm high.

\*£40 - 60



62

Mick Morgan [Contemporary] a raku fired vase of slender oviform the marbled exterior with vertical black lines and speckles, impressed personal seal, 26cm high.

\*£50 - 80



63

Three studio ceramic table lamps, comprising a white stoneware example of pierced cylindrical form under green glazes, a terracotta example of cylindrical form with painted geometric form, a terracotta rectangular lamp base incised with a matrix of characters, tallest 43cm high.

\*£60 - 80



64

A mixed group of studio pottery, comprising a Pat Armstrong raku fired stoneware vase under copper fuming, a Dartington Pottery flambé glazed porcelain vase, a Yelland Pottery stoneware dish, a Winchcombe stoneware jug and a further jug and bowl by other hands. [7]

\*£80 - 120

65 No Lot

• denotes lots affected by Artist's resale rights - refer to conditions of sale.

66

• Dame Lucie Rie D.B.E. [1902-1995] a stoneware bowl, of circular form, the interior and exterior under volcanic green glazes below an unglazed rim, applied personal seal, 23.5cm diameter.

\*£2000 - 4000

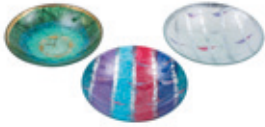


67

• Dame Lucie Rie D.B.E. [1902-1995] a stoneware jar and cover. of baluster form the cover with lug handles, the body with incised 'knitted' decoration under ivory and brown glazes, applied personal seal, 27cm high.

\*£1500 - 2500





68  
Margaret Johnson  
[Contemporary] three  
glass dishes of circular  
form decorated with silk  
straw, gold and silver foil  
with shoals of fish on a  
green, clear and banded  
ground, 30cm diameter.

\*£80 - 120



69  
Margaret Johnson  
[Contemporary] three  
glass dishes of square  
form decorated with silk  
straw, gold and silver foil  
with shoals of fish, on  
banded purple, red and  
yellow or red and black  
grounds, each signed,  
27cm square.

\*£80 - 120



70  
Three pieces of  
Scandinavian glass,  
comprising a green litala  
glass bird after a design  
by Oiva Toikka, 14cm  
long, together with two  
Holmgaard vases, one  
of purple and green  
cased in clear glass, the  
other blue cased in pale  
blue, 25 and 19cm high,  
diamond point etched to  
bases.

\*£180 - 220



71  
Two Whitefriars green  
cloudy glass footed  
vases, pattern no. 3000,  
after the original design  
by Harry Powell, 19.5 and  
20cm high.

\*£100 - 150



72  
A pair of Powell & Sons Whitefriars green glass  
tazzas and a pair of pale blue fan shaped vases, both  
modelled after Venetian originals by T.G. Jackson, 18  
and 14cm high.

\*£100 - 200



73 No Lot





74 David Cleverly [Contemporary] an earthenware group, 'Speckled Fowls' modelled as a Cockerel and Hen on a captioned square base, signed to underside, 23cm high.

\*£100 - 150



75 David Cleverly [Contemporary] an earthenware group, 'Yellow Frog' modelled standing on a captioned square base, signed to underside, 14cm high.

\*£80 - 120



76 David Cleverly [Contemporary] an earthenware group, 'Good Dog' modelled in seated posture on a captioned rectangular base, signed under base 19cm high, together with a collar/circular stand by the same hand. [2]

\*£80 - 120



77 A bronzed resin sculpture Torso III, modelled after the original by Barbara Hepworth, the square base incised 'B.H. 1958, 6/7', 58cm high.

\*£200 - 250

78 No Lot

\* All lots subject to a buyers premium of 25% plus vat @ 20%



79

• Jeremy Leach [b.1941] seven white stoneware bowls of circular form with brushwork, tenmoku or wax resist decoration, impressed personal seals and paper labels, largest 16cm diameter.

\*£50 - 70



80

A quantity of Shepherds Well stoneware, by David and Simon Eeles, comprising six bowls, two jars and covers, a vase and two piece cruet, decorated variously, impressed personal seals, together with a Goldstone jug, one other and a combed slipware bowl.

\*£70 - 90



81

• Jeremy Leach [b.1941] six white stoneware bowls of circular form with brushwork, wax resist and spirally fluted decoration, impressed personal seals and paper labels, largest 15cm diameter.

\*£50 - 80



82

A stoneware teapot and four cups, attributed to John Lomas, the former of globular form with applied overhead handle, the shoulders incised with a curvilinear band, the cups with similar decoration under pale grey glazes, applied pad marks.

\*£60 - 90



83

A mixed group of studio pottery, including a John Maltby stoneware box and cover, a Will Brereta charger, a Paul Jackson terracotta jug, three Clive Bowen terracotta goblets, other stoneware and porcelain items and a soda glass bowl, [some damages].

\*£60 - 90



84

• Jeremy Leach [b.1941] eight stoneware espresso cups each of slender waisted form under tenmoku glazes, impressed personal and Matilda and Lowerdown Pottery seals, paper labels to bases, 13cm high.

\*£40 - 60

• denotes lots affected by Artist's resale rights - refer to conditions of sale.



85 Roger Cockram [b.1947] a porcelain vase, of oviform with altered neck applied with two shells, under pale celadon and banded blue and red tinged glaze, applied personal and Chittlehampton Pottery seals, 22cm high.

\*£50 - 80



87 Dylan Bowen [b.1967] an earthenware vase of thrown and altered form with incised decoration under chocolate and cream glazes, inscribed 'DB' to base, 46cm high.

\*£200 - 300

86 No Lot



88 A large stoneware vase, by an unknown hand, constructed in two sections, the incised and textured oviform base applied with a conical neck under stained green oxides, 78cm high.

\*£50 - 80



89 Bruce Chivers [b.1954] two porcelain vases of slender oviform with ribbed rim, with green stained incised decoration on an ivory crackle glazed ground, impressed personal seals, 14.5 and 15.5cm high.

\*£50 - 80



90 • Jon Middlemiss [b.1949] a slab built white stoneware vessel, of split conical form under banded matt blue, red and brown oxides, under a gold rim, impressed personal seal, 26cm high.

\*£100 - 200

\* All lots subject to a buyers premium of 25% plus vat @ 20%

- 91  
A Whitefriars glass heavy lobed dish, of asymmetric form in kingfisher blue with controlled bubble decoration, 24cm wide.  
\*£30 - 50
- 92  
Three Whitefriars glass sparrow beak ewers, in kingfisher blue with tooled clear glass handles, tallest 23cm high.  
\*£80 - 100
- 93  
Margaret Johnson [Contemporary] two glass dishes of square form decorated with silk straw, silver foil and mixed media, one decorated with a shoal of fish on a blue green ground, signed lower centre, the companion with panels of fish and other decorative motifs on a black ground, 32cm wide.  
\*£80 - 120
- 94  
Three Nazeing glass bowls, one of squat trumpet form with broad everted rim under cloudy green, 30cm diameter, together with two smaller shallow bowls with distorted rim under pale cloudy blue.  
\*£50 - 80
- 95  
Two Nazeing glass shallow dishes, of circular form one under cloudy green with bubble inclusions, 41cm diameter, the companion of clear and pink tinged colour, 27cm diameter.  
\*£50 - 80
- 96  
A Whitefriars Wealdstone silver grey glass vase of optic ribbed and footed form modelled after the original by Barnaby Powell, 24cm high, together with another green glass wave ribbed vase of oviform with undulating rim, 20cm high. [2]  
\*£60 - 80
- 97  
An art glass bowl of footed circular form decorated with an encircling matrix of blue stained bubbles, diamond point etched 'MR 04', 25cm diameter, together with a small blue soda glass vase. [2]  
\*£40 - 60
- 98  
Frank Thrower for Dartington, a blue glass ewer, of slender waisted form with applied clear glass handle, 36cm high.  
\*£30 - 50
- 99  
A pair of Tajima pressed yellow glass totem vases, 19cm high.  
\*£30 - 50
- 100  
Four Vasart glass bowls, of squat globular form with broad flanged rim, three in cloudy green with bubble inclusions and one of mottled white appearance with a yellow rim, the largest 27cm diameter.  
\*£70 - 90
- 101  
A group of green glass, comprising a bowl attributed to Ysart of shallow footed form with green spiral, 31cm diameter, together with another cloudy green glass bowl and two similar vases of footed cylinder form. [4]  
\*£100 - 150
- 102  
Mats Johanssen 'Blue Magic' bowl of circular notched form, the blue and clear body with frosted underside, embossed Mats Johanssen Sweden to base, 31cm diameter.  
\*£30 - 50
- 103 No Lot

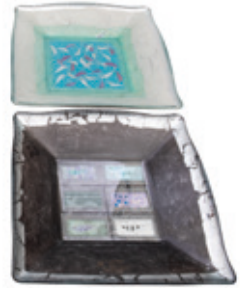
• denotes lots affected by Artist's resale rights - refer to conditions of sale.



91



92



93



94



95



96



97



98



99



100



101



102

\* All lots subject to a buyers premium of 25% plus vat @ 20%



104  
A Clarice Cliff cauldron and vase, the former decorated in the Blue Taormina pattern, Wilkinson backstamp, circa 1937, the latter of swelling cylinder form [265] in the Chintz pattern, Fantasque backstamp, circa 1937.

\*£100 - 150



105  
Two Poole pottery vases, one of cylinder form the other oviform and both brightly painted with birds amongst blooms, pattern LE, black backstamps, circa 1970, 24 and 22cm high, together with a Carter Stabler & Adams Polle pottery vellum glazed squirrel, [loss to one ear].

\*£60 - 90



106  
A Poole pottery Agean spear shaped dish, black backstamp and monogram for Jacqueline Mackenzie, together with a similar bowl.

\*£40 - 60



107  
A Walter Moorcroft vase, of tear drop form tube lined in the Clematis pattern on a blue ground, green facsimile signature and residue of Royal Warrant label, 27cm high.

\*£50 - 80



108  
A Carter Stabler & Adams Poole pottery vase, painted with flowers in pastel tones, Y1 pattern, on an ivory ground, impressed Poole England and incised 213 with monogram for Ruth Pavely, circa 1930-35, 24cm high, together with two later flower decorated Poole pottery vases.[3]

\*£80 - 120

• denotes lots affected by Artist's resale rights - refer to conditions of sale.



109

• Peter Hayes [b.1946], a raku fired stoneware sculpture, of textured totemic form with green resin filled aperture, on a square base, signed 'Peter Hayes 97', 42cm high.

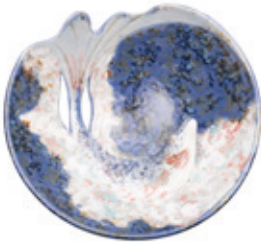
\*£300 - 400



110

• Michael Casson [1925-2003] a large stoneware bowl of deep circular footed form with tenmoku glazed interior, the exterior incised with an encircling landscape, 36cm diameter, impressed personal seal to foot.

\*£400 - 500



111

Roger Cockram [b.1947] a stoneware bowl of footed and pieced asymmetric form the interior modelled with a trout in foaming waters, applied personal and pottery marks. 23cm wide.

\*£60 - 90



112

Frances Dease [Contemporary] a turned burr oak platter, dated 1 May 1976, 41.5cm diameter.

\*£50 - 80



113

Harry Juniper [Contemporary] an unusual earthenware bowl, the interior and exterior under pink and green lustre decoration, incised under the base Harry Juniper, Bideford, 28cm diameter.

\*£50 - 80



114



115



116



117



118



119



120

114

A set of four lead figures emblematic of the Four Seasons, in 18th century style, early to mid 20th century, titled in French, 25.5cm high

\*£300 - 400

115

Three Royal Worcester porcelain figures, modelled after originals by Freda Doughty, comprising Woodland Walk, Fisherman and Little Parakeet, together with a Lladro figure.

\*£60 - 90

116

• Jeremy Leach [b.1941] four stoneware vases: one of oviform and three of flattened oviform the latter decorated with an incised lattice under pale celadon glazes, impressed personal and Lowerdown seals, with paper labels, tallest 18cm high.

\*£80 - 120

117

A set of six silver and enamel miniature birds, Saturno Italy, late 20th century, four Ducks and two Pelicans, stamped 925, 115grams.

\*£100 - 150

118

Five Le Brescon [Vallaruris] pottery plates, comprising one large and four smaller each decorated with either fish or a cockerel, incised marks to base, largest 34cm diameter.

\*£50 - 80

119

A Lowerdown Pottery stoneware coffee set, comprising a coffee pot and cover, milk jug, six saucers and five cups each with celadon glazed interior, impressed seals.

\*£80 - 120

120

Colin Kellam [1942-2020] a stoneware dish, of rectangular form incised and boldly decorated with two large fish, 64cm long.

\*£80 - 120

• denotes lots affected by Artist's resale rights - refer to conditions of sale.





121

121  
• Richard Batterham [1936-2021] a stoneware tea pot under a pale celadon glaze, 32cm long, [minor chip to spout].

\*£50 - 80



122

122  
A stoneware anthropomorphic ewer, of heavily potted form with grooved strap handle under pale green stain, incised 'MC' to base, 26cm high.

\*£40 - 60



123

123  
A terracotta torso, mounted on an ebonised block with label L. Caumont Torio, 32cm high.

\*£50 - 80



124

124  
Stanley Nicholson Babb [1874-1957] an earthenware nude, on rustic base, signed and dated 1925, 23cm high.

\*£60 - 80



125

125  
Two Denby stoneware vases after designs by David Yorath one of squat form with incised decoration under brown glazes, impressed marks and facsimile signature and incised Sonia Yorath, 30cm high, together with a shouldered vase painted in the Minaret pattern, 23cm high.

\*£120 - 180



126

126  
John Newdigate, [b.1968] two porcelain 'Phases of the Moon' bowls with stencilled blue decoration on white, signed to base, 19cm diameter.

\*£100 - 150



127  
Colin Kellam [1942-2020] a stoneware dish and two olive dishes, the former of circular form and painted with Winnie the Pooh and Piglet playing Pooh Sticks, impressed marks, 33cm diameter, [chip to foot rim].

\*£50 - 80



127

\* All lots subject to a buyers premium of 25% plus vat @ 20%



128

• Geoffrey Swindell [b.1945] a porcelain vase, of footed seed pod form with pinched rim with moulded handles centred with a spike under brown glazes, incised 'S' to base, 9.5cm high.

\*£120 - 180



128A

• Jeremy Leach [b.1941] a mixed group of stoneware comprising a waisted vase, a cylinder vase both under celadon glazes, two octagonal vases under tenmoku and brushwork decoration respectively, two onion shaped jars and cover, a circular box and cover and small dish all under brushwork, together with four tiles.

\*£60 - 90



129

Rob Whelpton [b.1952] a raku fired stoneware jar and cover, of reticulated oviform, the exterior decorated in yellow with a shoal of fish, impressed personal seals, 14cm high.

\*£80 - 120



130

• David Leach [1911-2005] a stoneware bowl, of circular footed form the vertically incised exterior under an ivory band over tenmoku, impressed personal seal to foot, 10cm diameter.

\*£80 - 120



131

Harry Juniper [Contemporary] a slipware jug, 'The Result of Barnstaple' sgraffito decorated with a sailing vessel flanked by the sun, wind, a mariner's compass and mermaid, signed below the handle, 22cm high.

\*£50 - 80



132

• A Sandy Brown [b.1946] stoneware jar and cover incised and painted with four circular panels depicting a sailing vessel, sea monster and birds, incised to underside Sandy, 21cm high.

\*£50 - 80

133-140 No Lots

• denotes lots affected by Artist's resale rights - refer to conditions of sale.

141

**Six exhibition posters**

'Artists of the Newlyn School 1880-1900', Newlyn Art Gallery 1979

'Cornwall. Peter Lanyon & Andrew Lanyon', Newlyn Art Gallery 1983

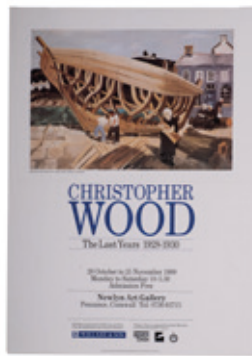
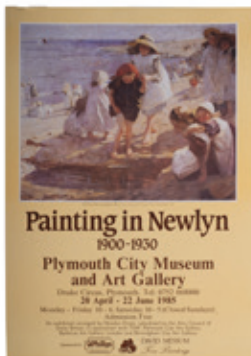
'Painting in Newlyn 1880-1930', Barbican Art Gallery 1985

'Painting in Newlyn 1900-1930', Plymouth City Museum and Art Gallery 1985

'Artists from Cornwall', Royal West of England Academy 1992

'Christopher Wood. The Last Years 1928-1930', Newlyn Art Gallery 1989

The largest 76 x 55.5cm  
\*£50 - 70



141

142

**Four exhibition posters**

'James McNeill Whistler: 150th Anniversary Celebrations', Hunterian Art Gallery 1984

'Sickert: Paintings', Royal Academy of Arts 1992-1993

'Japan and Britain: An Aesthetic Dialogue 1850-1930', Barbican Art Gallery 1991-1992

'Hokusai', Royal Academy of Arts 1991-1992

The largest 76 x 51cm  
\*£60 - 80



142

143

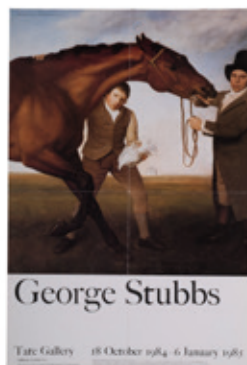
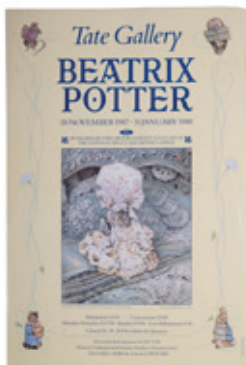
**Three exhibition posters**

'George Stubbs', Tate 1985

'Constable', Tate 1991

'Beatrix Potter', Tate 1987-1988

The largest 76.5 x 51cm  
\*£40 - 60



143

\* All lots subject to a buyers premium of 25% plus vat @ 20%



144

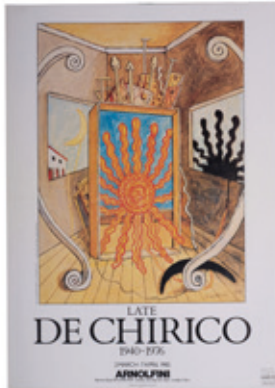
Four exhibition posters  
'Monet', Royal Academy of Arts 1990

'Renoir', Hayward Gallery 1985

The National Gallery (Van Gogh's Sunflowers)

'Toulouse-Lautrec. The Graphic Works', Royal Academy of Arts 1988-1989

The largest 76.5 x 51cm  
\*£40 - 60



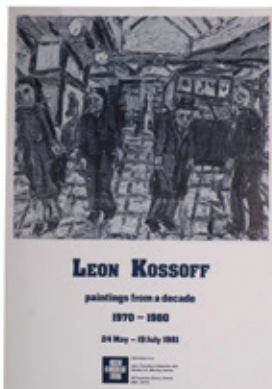
145

Three exhibition posters  
'Late de Chirico', Arnolfini 1985

'On Classic Ground: Picasso, Leger, de Chirico and the New Classicism, 1910-1930'. Tate 1990

'Max Ernst', Tate 1991

The largest 76.5 x 51cm  
\*£40 - 60



146

Three exhibition posters  
'Leon Kossoff', Museum of Modern Art Oxford 1981

'The Art of the Avant-Garde in Russia', The Royal Academy of Arts 1983

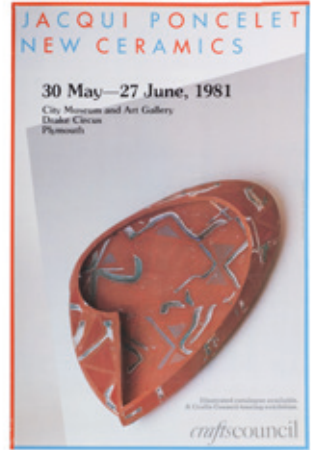
'Chagall to Kitaj. The Jewish Experience in 20th Century Art', Barbican Art Gallery 1990-1991

The largest 76 x 51cm  
\*£30 - 50

• denotes lots affected by Artist's resale rights - refer to conditions of sale.

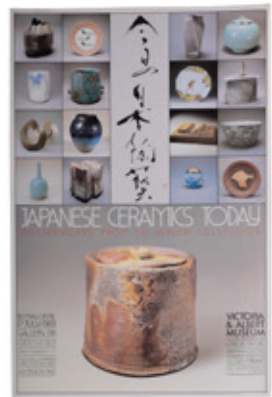
147

Five exhibition posters  
'State of Clay', Royal  
College of Art 1978  
'Joe Tilson', Arnolfini  
1984  
'Jacqui Poncelet. New  
Ceramics', City Museum  
and Art Gallery Plymouth  
1981  
'Studio Ceramics Today',  
V&A 1983  
'Larger than Life.  
Large Scale Ceramics',  
Plymouth Arts Centre  
1989  
The largest 76 x 51 cm  
\*£30 - 50



148

Four exhibition posters  
'Takeshi Yasuda  
Ceramics', Plymouth Arts  
Centre 1988  
'Japanese Ceramics  
Today. Masterworks from  
the Kikuchi Collection',  
V&A 1983  
'Bernard Moore. Master  
Potter 1850-1935', V&A  
1983  
'New Glass. A Worldwide  
Survey', V&A 1981  
The largest 76 x 51 cm  
\*£50 - 70



149

Four exhibition posters  
'Hans Coper 1920-1981',  
Serpentine Gallery 1984  
'Tony Cragg', Tate 1989  
'Lucy Rie. Pottery from  
1926-1981', V&A 1982  
'Crafts South West',  
Spacex Gallery 1980  
The largest 76 x 51 cm  
\*£40 - 60



\* All lots subject to a buyers premium of 25% plus vat @ 20%



150

Four exhibition posters

'Picasso, Matisse and other Modern Masters', Royal Academy of Arts 1990  
 'The Fauve Landscape', Royal Academy of Arts 1991  
 'Raoul Dufy', Hayward Gallery 1984  
 'Otto Dix', Tate 1992  
 The largest 76 x 51cm

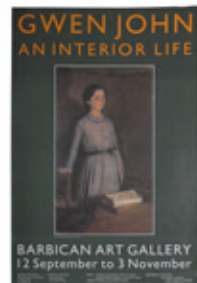
\*£40 - 60

151

Three exhibition posters

'Georgia O'Keefe', Hayward Gallery 1993  
 'The Modern Spirit. American Painting 1908-35', Hayward Gallery, 1977  
 'Graham Sutherland', Tate 1982  
 The largest 76 x 51cm

\*£40 - 60



152

Five exhibition posters

'The Omega Workshops 1913-1919', Crafts Council Gallery 1984  
 'Gwen John. An Interior Life', Barbican Art Gallery 1985  
 'The True North. Canadian Landscape Painting 1896-1939', Barbican Art Gallery 1991  
 'The Paintings of William Coldstream 1908-1987', Tate 1991  
 'The Ruralists', Arnolfini 1981  
 The largest 76 x 51cm

\*£40 - 60

153

Two exhibition posters

'The Architecture of Alfred Loos', The Mall London 1986  
 'Le Corbusier. Architect of the Century', Hayward Gallery 1987  
 The largest 76 x 51cm

\*£40 - 60

• denotes lots affected by Artist's resale rights - refer to conditions of sale.



154

Two exhibition posters

'Crafts from Mexico. In Conjunction with the Diego Rivera Exhibition at the Hayward Gallery', Royal Festival Hall 1988

'The Golden Age of the Anglo-Saxon Art, 966-1066'

The largest 76 x 51cm

\*£40 - 60

155

Four exhibition posters

'Joseph Beuys', V&A 1983

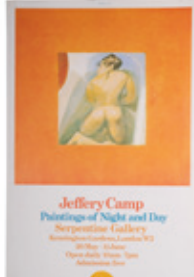
'Hans Hofmann: Late Paintings', Tate 1988

'Hundert Wasser', Barbican Centre 1983

'Hendrik Werkman. Printer-Painter 1882-1945', V&A 1980

The largest 76 x 51cm

\*£40 - 60



156

Four exhibition posters

'Narrative Paintings', ICA

'Roger Hilton. Last Paintings', Southampton Art Gallery

'Clarice Cliff', L'Odeon

'A Paradise Lost. The Neo-Romantic Imagination in Britain 1935-55

The largest 76 x 51cm

\*£40 - 60

157

Eight exhibition posters

'Terry Frost', Plymouth City Museum

'Terry Frost', Plymouth City Museum 1988

'Jeffery Camp', Serpentine Gallery

'Anthony Green', Royal Academy of Arts

'Victor Pasmore', Walker Art Gallery 1980

'Terry Winters', Tate 1986

'John Walker', The Fruitmarket Gallery 1985

'Patrick Heron', Barbican Art Gallery 1985

The largest 76 x 51cm

\*£40 - 60

\* All lots subject to a buyers premium of 25% plus vat @ 20%

158

**Fifteen exhibition posters**

'Robert Freeman. Photographs of the Beatles', Brewhouse Theatre 1988

'Jock McFayden', Northern Centre for Contemporary Art 1986

'New Image: Glasgow', AIR Gallery 1985

'Patrick Heron', Plymouth Arts Centre

'Alexander Mackenzie, Denis Mitchell, John Wells', City Art Gallery Drake Circus 1975

'Photo Pieces by Gilbert and George', Dartington New Gallery

'Robert Mapplethorpe', ICA 1983-1984

'Robert Mapplethorpe', Arnolfini 1983

'Roger Hilton', The Bede Gallery

'Howard Hodgkin', Museum of Modern Art Oxford

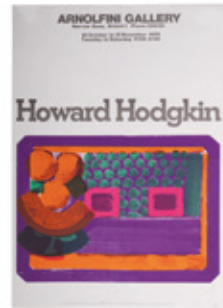
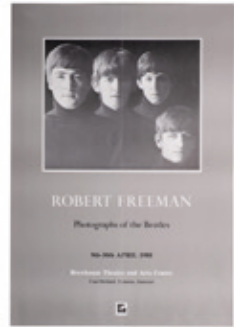
'Howard Hodgkin', Arnolfini 1975

'Jo Spence', Cambridge Darkroom

'Stuart Brisley', ICA

'Bill Brandt', Museum of Modern Art Oxford 1981 (2)

The largest 63 x 44cm



\*£40 - 60



159

**Nine exhibition posters**

'The Contemporary Art Society', Bristol City Museum 1992

'Michael Brennand-Wood', Crafts Advisory Committee Gallery 1979

'Edward Bond Bingo', Northcott Theatre

'Francesco Clemente. Three Worlds', Royal Academy of Arts 1991

'W.H.Smith Illustration Awards', V&A 1987 (2)

'John Heartfield', Barbican Art Gallery 1992

'Richard Hamilton', Tate 1984

'Lubetkin & Tecton. Architecture & Social Commitment', Arnolfini 1981

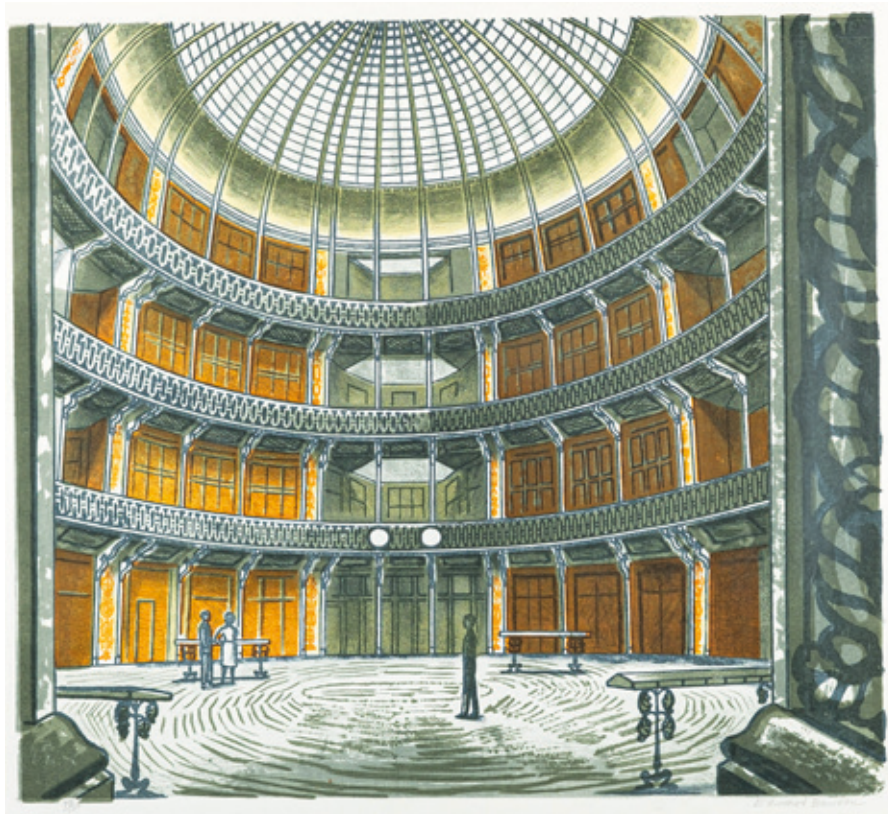
The largest 76 x 51cm

\*£40 - 60



• denotes lots affected by Artist's resale rights - refer to conditions of sale.





160

• Edward Bawden (British, 1903-1989)

The Coal Exchange, 1963

Coloured lithograph

43.5 x 47.5cm

Signed lower right and numbered 78/100 lower left

\*£800-1200



161

• John Piper (British, 1903-1992)

Scotney Castle V, 1982

Etching

21.5 x 40cm

Signed lower right and numbered 3/50 lower left

\*£200 - 300

Provenance; Century Galleries Ltd., Henley, 1985



162

Antonín Morávek (Czechoslovakian, 1896-1959)

Prague, 1945

Lithograph

44 x 56.5cm

Signed lower right

Together with a print of Palace Pier, Brighton by Ronald Salmond

(2)

\*£40 - 60



163

Peter Wickham (British, 1934-2009)

Brighton Beach II

Linocut

39.5 x 54.5cm

Signed lower right, dated 1983 and inscribed with the title lower left and numbered 5/12

Together with an aquatint of the Dorset Coast by Michael Chaplin (British, b.1943)

(2)

\*£60 - 80

• denotes lots affected by Artist's resale rights - refer to conditions of sale.

164

**Aboriginal School,  
20th Century**

Two copies of a folio each containing 6 coloured reproductions of Indigenous paintings. The title page text contains a foreword by Winifred Hilliard, author of 'The People in Between / The Pitjantjatjara Story', followed by a biography of Winifred Hilliard. One without cover, together with a third folio containing 7 different coloured reproductions with a similar title page. Folio, 50 x 37.5cm 'Central Australian Aboriginal Paintings / Brilliant Abstract Designs of the Pitjantjatjara' Newcraft Publicity, Australia, 1968

\*£400 - 600



165

**• Robert Oscar  
Lenkiewicz**  
(British, 1941-2002)

The painter with Anna (I)  
Giclee on canvas  
82 x 62 cm  
For the project of 'The  
Painter with Women;  
observations on the  
theme of the Double'  
1993. Number 28 from  
the edition of 475.  
Accompanied by a  
Certificate from The  
Lenkiewicz Archive

\*£200 - 300



\* All lots subject to a buyers premium of 25% plus vat @ 20%



166

• Keith Vaughan (British, 1912-1977)

Winter landscape

Lithograph in colours

37.5 x 48 cm

Signed lower right and dated '49 from the edition of approximately fifty, published by Redfern Gallery, London

\*£1500 - 1800

167

• Sir Sidney Nolan  
(Australian, 1917-1992)

Leda and the Swan

Lithograph

43.5 x 57 cm

Signed lower right and  
numbered 18 from the  
edition of 125 lower left.

Published 1961

\*£200 - 300



168

American School,  
20th Century

Museum of Modern Art,  
NY

Photographic print

23 x 23.5 cm

Signed lower right and  
dated 1993 and inscribed  
with the title lower left on  
the mount

\*£80 - 120



167

169

168

• Jean-Paul Cleren (French, b.1940)

Portraits

Twelve Colour lithographs

Each 76 x 55.5 cm (sheet size)

All numbered and signed and with circular  
blindstamp of Robert Paraud to lower margin

\*£100 - 150



169

\* All lots subject to a buyers premium of 25% plus vat @ 20%



170

170

• After Sue Macartney  
Snape

(Australian, b.1957)

The Queen of the Castle  
and Breakfast in Bed

Two lithographs

51.5 x 39.5cm and  
smaller

The first numbered

94/600 and the second

169/600 lower left.

Both inscribed with the

title and signed lower

right

(2)

\*£100 - 200



171

171

Rojan Feodor

Stepanovich Rojanovsky

(Russian, 1891-1970)

Garden Scenes

Two lithographs

Each 17.5 x 22.5cm

(2)

\*£300 - 400

• denotes lots affected by Artist's resale rights - refer to conditions of sale.

172

• **Arthur Segal**  
(Romanian, 1857-1944)

The artist's wife reading  
Woodcut on wove paper  
58 x 39cm (Sheet size)

Published by Richard  
Nathanson 1972. His  
blindstamp stating

Edition 80, lower left  
\*£100 - 150



172



173

173

• **Gilbert Spencer**  
(British, 1892-1979)

'Greetings from Gilbert, Ursula & Gillian  
Spencer. Tree Cottage, Glasgow School  
of Art'

Etching

26 x 19cm

Dated 1948-1949

\*£60 - 80



174

174

**Donna MacLean** (British, Contemporary)

Gaslight

Etching

17 x 20cm

Signed and date '84' lower right

Together with Peter Neal, artist's proof,  
dated 89; and Kenerssef,  
'The Steps of the Pantheon', ink  
drawing (3)

\*£60 - 80



175

175

• **John Nash RA** (1893-1977)

Reclining female nude

Etching

13.5 x 21cm

Signed lower left

\*£200 - 300



176

176

• **John Nash RA** (1893-1977)

Landscapes

Two etchings

The larger 16 x 20.5cm

The larger signed lower left

(2)

\*£200 - 300

\* All lots subject to a buyers premium of 25% plus vat @ 20%



177

177

• Robert Oscar Lenkiewicz  
(British 1941-2002)

Esther seated

Lithograph

63 x 61.5cm

Signed lower right, inscribed with  
the title lower centre and numbered  
400/475 lower left

accompanied by a certificate of  
authenticity on behalf of Fisher  
Mackenzie Publishing

\*£200 - 300



178

178

• Christopher James Tate  
(British, Contemporary)

'Trece'

Print

38.5 x 100.5cm

Signed lower right,  
inscribed with the  
title lower centre and  
numbered 2/101 lower left

\*£60 - 80



179

Simon Atkinson (British, Contemporary)

Abstract compositions

Fifteen monotypes

Each approximately 7.5cm x 12cm

Each signed and dated 1997 in pencil lower right

\*£80 - 120



179



• denotes lots affected by Artist's resale rights - refer to conditions of sale.





180

Ivan Schwebel (American, 1932-2011)

Ein Gedi

Coloured lithograph

55.5x75cm

Signed and dated '77' lower right corner

Limited series, 56/56

Together with another coloured lithograph by the same artist, signed and dated 'Schwebel 77' lower right corner; and an abstract print, signed and stamped 'CMF' lower right (3)

\*£100 - 150



180



181

Julian Grater (British, b.1959)

Three mixed media pictures

'Rise I'

Limited mixed media series 6/10

75 x 59cm

Signed and inscribed in pencil below

'Additional Remains I'

Mixed media

Inscribed in pencil above

74 x 56cm

'Study for Self Image I'

Limited print series 15/20

52 x 40cm

Signed and inscribed in pencil below

\*£200 - 300



181

\* All lots subject to a buyers premium of 25% plus vat @ 20%



182

182  
Five linocut prints including 'Tremayna' and 'Requiem for the Elms' The largest 28 x 34.5cm Signed 'Newson' lower right margin

\*£60 - 80



183

183  
• Alan Dyer (British, b.1944)

'Crowd 1' and another Limited edition print. 43 x 30.5cm & 40.5 x 31.5cm

Both signed, dated 1969 and one numbered 1/25 and the other 12/12

\*£60 - 80



184

184  
Glynis Barnes-Mellish (British, 20th Century)

'Hopes and dreams' and 'Contemplation' Two limited edition prints Each 33.5 x 41.5cm Both signed lower right and numbered 76/350

\*£60 - 80



185

185  
Betty Sandham (British, 20th Century)

'Sunflowers; Skeletons' 3/10, 'Three Sunflower Heads' 3/6 and 'Fading Heads' 3/10 Three collographs 50 x 54cm and smaller All signed lower right and numbered lower left (3)

\*£60 - 80

• denotes lots affected by Artist's resale rights - refer to conditions of sale.



186

186

**Betty Sandham**  
(British, 20th Century) 'Moonrise', 'Minoan Veil', 'Minoan Reconstruction' and 'Fish Bowl'

Four intaglio prints  
46 x 64cm and smaller  
All signed (4)

\*£60 - 80



187

187

**Betty Sandham**  
(British, 20th Century) 'Trees in Central Park' and 'Daisy Vase'

Two intaglio prints  
55 x 99cm and smaller  
Both signed  
Together with a watercolour of teasles (3)

\*£60 - 80



188

188

**Betty Sandham**  
(British, 20th Century)  
Seagulls

Two lithographs  
56 x 76cm and smaller  
One signed and numbered 'Artists Proof' (2)

\*£40 - 60

189

• **Julian Otto Trevelyan**  
(British, 1910-1988)

San Gimignano  
Etching with aquatint  
52 x 39.5cm

Signed lower right.  
inscribed with the title lower centre and numbered 8/20 lower left

\*£200 - 300

Provenance; Zwemmer Gallery, London



189

\* All lots subject to a buyers premium of 25% plus vat @ 20%



190  
Danae Ghost (British, Contemporary)  
'In the Grove' 1992  
Acrylic on board  
120 x 90cm

\*£40 - 60



191  
• Robert Oscar  
Lenkiewicz  
(British, 1941-2002)  
Diogenes  
Watercolour  
41.5 x 27cm  
Signed lower right

\*£500 - 600

• denotes lots affected by Artist's resale rights - refer to conditions of sale.

192

• Robert Oscar Lenkiewicz  
(British, 1941-2002)

Study of David cleaning studio  
windows / Parade 1971-Project

1. Vagrancy

Watercolour and gouache

37 x 31cm

Signed and inscribed with the  
title on a label attached to the  
reverse

\*£500 - 600



193

• Robert Oscar Lenkiewicz  
(British, 1941-2002)

Study- Boy, physically  
disadvantaged, Project 3

Watercolour

31 x 30cm

Signed on the reverse and  
inscribed with the title

\*£300 - 400



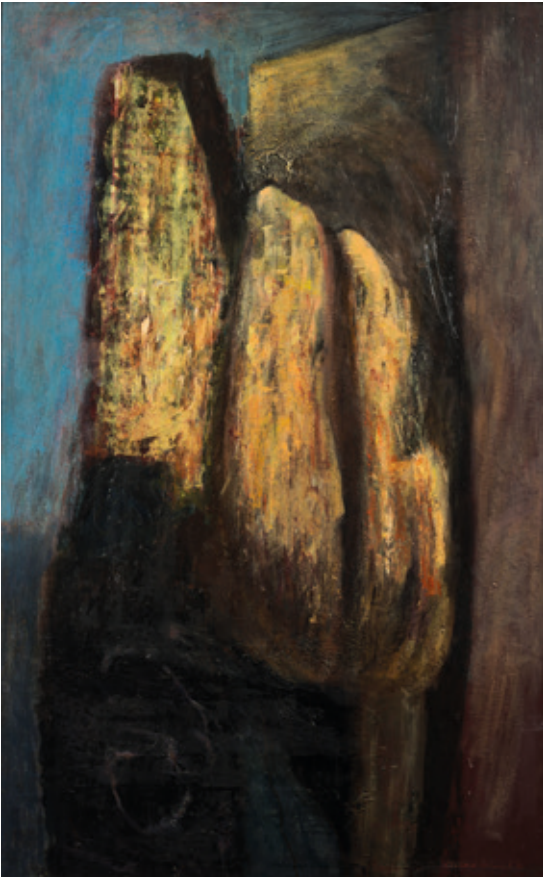
\* All lots subject to a buyers premium of 25% plus vat @ 20%



194  
Fernand Labat (French, 1889 -1959)  
Portrait of a woman  
Oil on canvas  
63.5 x 52.5cm  
Signed lower right

\*£400 - 600

195 No Lot



196  
• Clifford Fishwick  
(British, 1923-1997)  
Spigolo Giallo  
Oil on board  
121 x 75cm  
Signed and dated '61 lower  
right

\*£600 - 800

• denotes lots affected by Artist's resale rights - refer to conditions of sale.



197

• Edward Wolfe (British, 1897-1982)

Still Life with Fruit

Mixed media abstract composition

34 x 38cm

Signed lower right

\*£300 - 500



198

• Justin Knowles (British, 1935-2004)

Linear forms

Two screenprints

Each 49.5 x 65cm

Both initialed lower right, numbered 3/7 and

dated '02 (2)

\*£200 - 300



\* All lots subject to a buyers premium of 25% plus vat @ 20%



199

• Justin Knowles (British, 1935-2004)

Yellow, Green, Blue, Red

Papier collé on graph paper

42 x 59cm

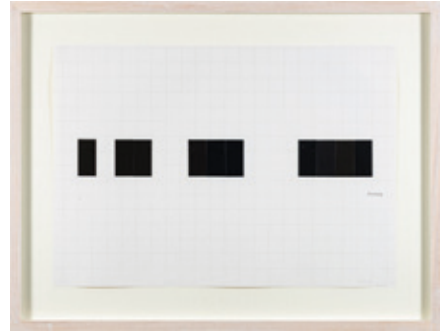
Inscribed lower right ' WD.63.ii.01/03 '

Together with an exhibition poster 'Justin Knowles...

From Nature to New Nature' Initialled and dated '03

(2)

\*£200 - 300



200

• Justin Knowles (British, 1935-2004)

Black and Black and yellow

Two papier collé on graph paper

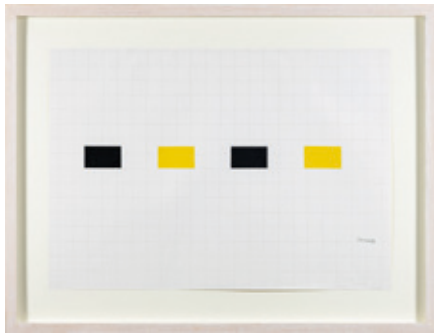
Each 42 x 59cm

One inscribed ' WD.88.03 ' and the other ' WD.23.03 '

Both initialled lower right and dated 2002/3 (2)

\*£200 - 300





201

• Justin Knowles (British, 1935-2004)

Black and yellow (2)

Two papier collé on graph paper

Each 42 x 59cm

One inscribed ' WD.13.ii.03 ' and the other ' WD.84.03 '

Both initialed lower right and dated 2002/3 (2)

\*£200 - 300



202

• Justin Knowles (British, 1935-2004)

Forms

Two pencil, felt tip and papier collé on graph paper

Each 45 57.5cm

Both initialed lower right and dated '73 (2)

\*£200 - 300



203

• Justin Knowles (British, 1935-2004)

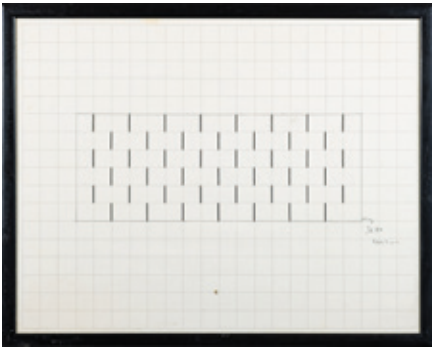
Yellow

Pencil and papier collé on graph paper

42 x 59cm

Inscribed ' WD.100.6.03 ' initialed  
lower right and dated 2003

\*£100 - 150



204

• Justin Knowles (British, 1935-2004)

Red. Black and Black

Three pencil and papier collé on graph  
paper

Each 45 x 58cm

All initialed lower right. Two dated '80  
and the other '79 (3)

\*£200 - 300



205

Attributed to • Justin Knowles  
(British, 1935-2004)

Linear forms

Thirty prints

Each 19 x 28cms

Ten framed as one (3)

\*£150 - 200

• denotes lots affected by Artist's resale rights - refer to conditions of sale.



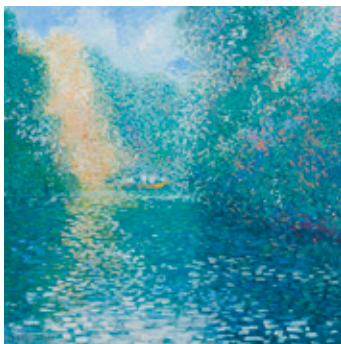
206  
**Siegbert Reinhard**  
 (German/American, 20th Century)  
 The Rehearsal, 1976  
 Photograph  
 43 x 63cm

\*£20 - 40



207  
**Victor Richardson** (Irish, b.1952)  
 Wild Flowers  
 Pastel  
 24.5 x 29.5 cm  
 Signed lower right

\*£150 - 200



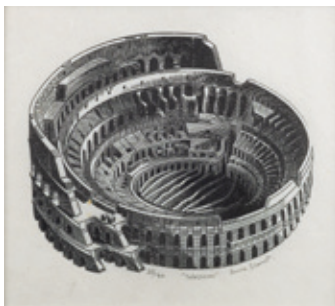
208  
**Victor Richardson** (Irish, b.1952)  
 The Backwater  
 Pastel  
 25.5 x 25.5 cm  
 Signed lower left

\*£150 - 200



209  
 • **Howard Phipps** (British, b.1954)  
 Bargeme, Provence  
 Engraving, using an Albion hand press  
 dated 1862  
 10 x 12.5cm  
 Signed and dated 1992 lower right  
 No. 28/100

\*£100 - 150



210  
 • **Anne Desmet RA** (British, b.1964)  
 Colosseum  
 Engraving  
 Signed lower right  
 No. 35/40

\*£80 - 120

\* All lots subject to a buyers premium of 25% plus vat @ 20%



211



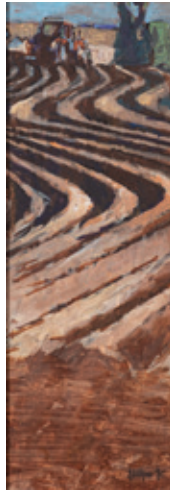
212

211  
Tamaris Taylor  
(British, Contemporary)  
Riddle Series-fish  
Mezzotint  
25.5 x 23cm  
Signed and dated 85  
lower right  
No. 4/21

\*£100 - 150



213



212  
• James Edward Bostock  
(British, 1917-2006)  
'Brentford Lock'  
Wood engraving  
20.5 x 15.5cm  
No. 10/30  
Signed and dated '53

\*£200 - 300

213  
Nick Lyons  
(British, 20th Century)  
The Plough; Ploughing  
Two watercolours  
59 x 59cm and 75 x  
24.5cm  
Both signed, one dated  
96 and the other 97  
(2)

\*£150 - 200



214

214  
Marcel Gaillard  
(French, 1886-1947)  
Cicely Frances Bucknall  
Oil on canvas  
99 x 109cm  
Signed lower left

\*£100 - 200

Painted at Casal dos  
Pinheiros, Monte Estoril,  
Portugal in 1924/25  
Exhibited: Paris Salon,  
1925

• denotes lots affected by Artist's resale rights - refer to conditions of sale.



215

215

**Haitian School, 20th Century**

A still life by Dieuseul Gerelus, A wild

animal scene by Pierre Henry and a

painting of two chickens

Three oils on canvas

75 x 60.5cm and smaller

(3)

\*£100 - 150



216

216

• **Andrew Macara (British, b.1944)**

The Cafe, Salou

Oil on canvas

49.5 x 90cm

Signed and dated 1983 bottom right

\*£300 - 400

Provenance: New Academy Gallery,

Windmill St., London.



217

217

• **Alan Cotton (British b.1936)**

Hartland, Stormy Seas at Pulpit Rock

Oil on canvas

51 x 51cm

Signed lower right

\*£500 - 600

Provenance; Messum's, London

218

• **Alan Cotton (British b.1936)**

Hartland, Calm Waters

Oil on canvas

36 x 36cm

Signed lower right

\*£400 - 500

Provenance; Messum's, London



218

\* All lots subject to a buyers premium of 25% plus vat @ 20%



219

• Alan Cotton  
(British b.1936)

Devon-Wheatfields at  
South Farm

Oil on canvas

30 x 24cm

Signed lower right

\*£300 - 400



220

• Alan Cotton  
(British b.1936)

Co. Kerry-Cattle Near the  
Cliff Edge

Oil on canvas

51 x 51cm

Signed lower right

\*£600 - 800

Provenance; Messum's,  
London

• denotes lots affected by Artist's resale rights - refer to conditions of sale.



221

• Alan Cotton  
(British b.1936)  
Cyprus-Hillside in  
Evening Light

Oil on canvas  
61 x 61cm

Signed lower right

\*£600 - 800

Provenance; Messum's,  
London

222

• Alan Cotton  
(British b.1936)  
Provence-Lavender Fields

Oil on canvas  
36 x 36cm

Signed lower right

\*£400 - 500

Provenance; Messum's,  
London



\* All lots subject to a buyers premium of 25% plus vat @ 20%



223  
 • Alan Cotton  
 (British b.1936)  
 Provence-Farmstead  
 Through Trees  
 Oil on canvas  
 51 x 51cm  
 Signed lower right  
 \*£600 - 800  
 Provenance; Messum's,  
 London

223



224  
 • Alan Cotton (British b.1936)  
 Provence-Landscape near Suzette  
 Watercolour  
 30 x 41cm  
 Signed lower right and inscribed  
 'Landscape near Suzette'

\*£300 - 400



225  
 • Alan Cotton (British b.1936)  
 Provence-Terraces at Gordes  
 Watercolour  
 61 x 47cm  
 Signed lower right and inscribed  
 'Provence, Terraces at Gordes'

\*£400 - 500

• denotes lots affected by Artist's resale rights - refer to conditions of sale.





226

226

**Jacques Valbrun**

(Haitian, fl. late 20th century)

Caribbean Harbour Scene

Oil on canvas laid to board

24.5 x 101cm

Signed and dated 95 lower left

\*£80 - 120

227

**Paul Manoussos (Greek, 1930-2021)**

Road to Lake, Udaipur

Gouache

39.5 x 24cm

Signed lower right and inscribed

'Udaipur' and dated 1981

\*£100 - 150

Provenance; Patrick Seale Gallery,  
London.

Miss J. Saunders, June 1984



227



228

228

**Luca M. Damiani (Italian, Contemporary)**

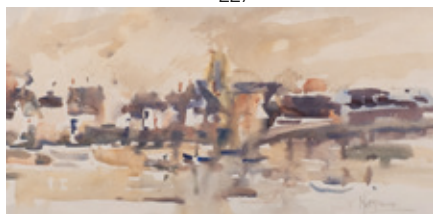
'Recoding Cities', 2016

Print

20 x 28.5cm

Initialed lower right

\*£40 - 60



229

229

**Matt Bruce (British, 1915-2000)**

A riverside village

Watercolour

17 x 35cm

Signed lower right

\*£40 - 60

\* All lots subject to a buyers premium of 25% plus vat @ 20%



230

230  
 Denise Henry (British, 20th Century School)  
 Mersey Way, Stockport  
 Signed and dated lower right  
 Oil on board  
 49 x 75cm

\*£80 - 120



231

231  
 • Allin Braund (British, 1915-2004)  
 'Sun shower'  
 Acrylic on board  
 61 x 70cm  
 Together with two other acrylics on board of Trees, 61 x 63.5cm and Rushes, 59.5 x 58cm.  
 All written on the reverse 'Painted by Ralph Allin Braund, Jeremy Braund 2004'  
 (3)

\*£300 - 500



232

232  
 Rodney Hatfield, aka Art Snake (American, Contemporary)  
 'Show Business'  
 Oil on board with scaping out  
 37 x 24cm  
 Signed lower right and dated 88  
 Art Snake, real name Rodney Hatfield, got his alias as a play on the well-known phrase "art for art's sake."

\*£300 - 400

• denotes lots affected by Artist's resale rights - refer to conditions of sale.



233

• Mark Tobey (American, 1890-1976)

A table scene, with a still life of fruits and an ewer, a partial figure visible with forearms resting on the table

the reverse of the frame indistinctly inscribed

Gouache

50 x 72cm

\*£1500 - 2000



234  
**Hein Heckroth**  
 (German, 1901-1970)  
 Devonshire landscape  
 inscribed *Devonshire for  
 Elsa, 14 Sept 1938 Hein  
 Heckroth*  
 watercolour on buff  
 paper  
 48 x 74cm.

After being 'blacklisted'  
 by the Nazis in 1935,  
 stage designer and artist  
 Hein Heckroth settled  
 in Devon, taking up  
 the post of Director at  
 Dartington Art Studio,  
 Dartington Hall, which  
 had become a refuge for  
 artists fleeing occupied  
 Europe. The present  
 watercolour dates from  
 his time in Britain.

\*£100 - 150



235  
**Marjana Wjasnova**  
 (Contemporary School)

*Aenigma*  
 Oil on linen  
 120 x 89cm

monogrammed lower right and bearing  
 further written title label

\*£100 - 150



236  
**Marjana Wjasnova**  
 (Contemporary School)

*Empowerment*  
 Oil on linen  
 121 x 90cm

monogrammed lower right and bearing  
 further written title label

\*£100 – 150

Provenance; With label for the Royal  
 Academy Summer Exhibition, 2003

237

Marjana Wjasnova  
(Contemporary School)

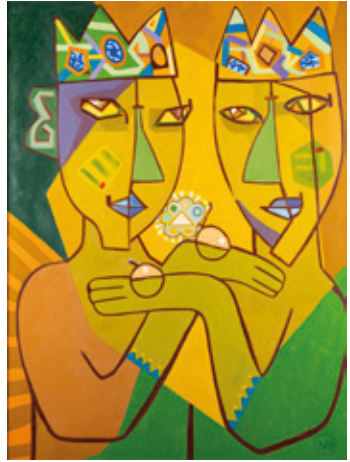
*Agape*

oil on linen

100.5 x 75cm

monogrammed lower right and bearing  
further written title label

\*£100 - 150



238

• Robert Organ (British, 1933-2023)

'Wozzeck assists with military research'

Watercolour and pastel

26.5 x 26 cm

Initialed lower right and dated 86

This work relates to an avant-garde  
Austrian opera 'Wozzeck' the story of  
an inarticulate taunted soldier suffering  
from mental illness. Driven to earn  
more money he submits to a doctor's  
experiments and is driven to madness

\*£150 - 200



239

Sheila Jefferies (British, 20th Century)

Barley Sun

Mixed media

91 x 60.5cm

\*£40 - 60



\* All lots subject to a buyers premium of 25% plus vat @ 20%



240



241

240

**Peter Lik (Australian, b.1959)**

'Seventh Wonder'

Photographic print

45.5 x 67.5 cm

Signed lower right and numbered 208 of the edition of 950

Framed with certificate on the reverse and accompanied by the original invoice

\*£2000 - 3000

241

• **Rowland Suddaby (British, 1912-1972)**

Flowers in a Vase

Acrylic on Canvas

48 x 59 cm

With a painting of a village pond scene on the reverse

\*£150 - 250



242

242

**Gabriel Eklou (Ghanaian, b.1966)**

The Great Tree

Acrylic on Canvas

153 x 153 cm

Unsigned

\*£100 - 200

• denotes lots affected by Artist's resale rights - refer to conditions of sale.

243

Wumi "Wumzum"  
Olaosebikan  
(British/Nigerian,  
Contemporary)

Camden Lock Gates  
Mural 2014

Aerosol Paint  
210 x 196cm

A renowned graffiti  
artist, illustrator,  
muralist and  
animator, Wumzum  
specialises in  
character & world  
design and takes  
inspiration from a  
range of sources:  
the visual language  
of comics; the  
interactivity of  
video games; the  
dynamism of graffiti;  
and the fluidity of  
the London Jazz  
scene.



This work has been described in his own words; 'I'd say this piece was at the beginning of my street art journey. I was finally painting with the big boys'

\*£500 - 700

244

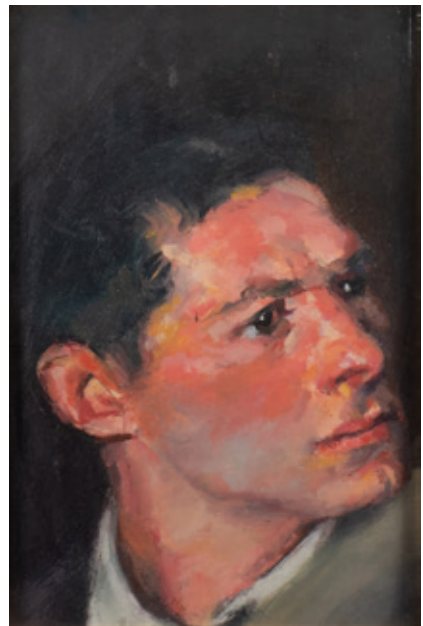
• Robert Oscar Lenkiewicz  
(British, 1941-2002)

Portrait of David, Helmingoe, Street  
Person, fragment from Vagrancy  
Oil on canvas

34 x 22.5 cm

Signed on the reverse and inscribed with  
the title

This portrait is a fragment from the  
artist's pun on Rembrandt's 'Night Watch'  
painting, originally the centre piece of  
the Mental Handicap project, later cut  
down by the artist



\*£600 - 800

\* All lots subject to a buyers premium of 25% plus vat @ 20%



245

• Robert Oscar Lenkiewicz (British, 1941-2002)

Student group painting models outside painter's studio-Barbican

Oil on canvas

42 x 32 cm

Signed on the reverse and inscribed with the title

\*£1000 - 1500

• denotes lots affected by Artist's resale rights - refer to conditions of sale.



246

**Rupert Pease**  
(British 1906-1945)

A fisherman with his boat  
looking out to sea

Oil on canvas

75 x 90cm

Signed lower left

\*£200 - 400

Rupert Pease was a rubber planter in Malaya during the 1920-40s and a well known painter of local Malay scenes. He died at Changi Internment Camp in 1945. His sister was Madame Dorothy Fera (Feenie) Tajasque, wife of Georges Tajasque, Chef du Cabinet to Marie Antoine Pasquier, Governor General of French Indo China during the period 1928-1934. A portrait by Pease of the Late Dr John Herbert Bowyer, is in the Singapore General Hospital Collection, of which he was administrator from 1941-44; the Adam Park Project Museum, Singapore, and several other portraits and sketches by Pease are in private and public collections. A portrait by Edward Charles Chitty, of Rupert Pease (1943), whilst he was in Changi, is in the Imperial War Museum, United Kingdom.



247

**Rupert Pease** (British 1906-1945)

Portrait of a man

Oil on canvas

40 x 29.5cm

Signed lower left and dated 1936 and initialled lower right and dated '36

\*£80 - 100

Please see lot 246 for Biography



\* All lots subject to a buyers premium of 25% plus vat @ 20%



248  
Rupert Pease (British 1906-1945)  
A naked fisherman in shallow waters  
Watercolour  
35.5 x 32cm  
Signed lower left and dated 1936

\*£60 - 80

Please see lot 246 for Biography



249  
Rupert Pease (British 1906-1945)  
Two men seated crossed legged with  
brass vessels  
Watercolour  
30.5 x 42.5cm  
Signed lower right and dated 1934

\*£60 - 80

Please see lot 246 for Biography



250  
Rupert Pease (British 1906-1945)  
Portrait of a man 'Ahmad'  
Watercolour  
31 x 25cm  
Signed lower right and 1934

\*£40 - 60

Please see lot 246 for Biography



251  
Rupert Pease (British 1906-1945)  
Portrait of a man  
Oil on canvas  
51 x 40.5cm  
Signed upper left

\*£80 - 100

Please see lot 246 for Biography

• denotes lots affected by Artist's resale rights - refer to conditions of sale.

252

**Gerald Norden**

(British, 1912-2000)

Still life with wine and  
cheese

Oil on canvas

30 x 34.5cm

Signed lower right

\*£100 - 150

Provenance; King Street

Gallery, London 1981



252



253

253

**Gerald Norden**

(British, 1912-2000)

Still life of apples on a  
table

Oil on canvas

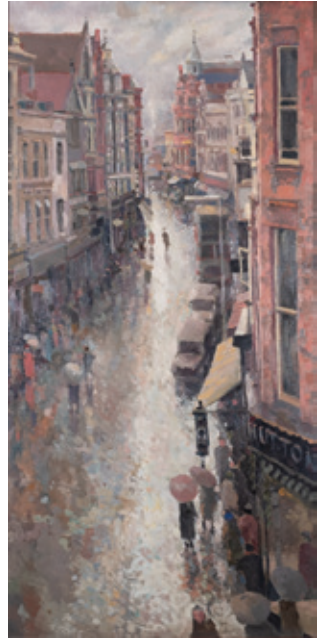
29.5 x 39.5cm

Signed lower right

\*£120 - 180

Provenance; King Street

Gallery, London 1979



254

254

**British School, 20th Century**

Exeter High Street looking West

Oil on board

120 x 59 cm

Painted in the 1920's

\*£200 - 300

Provenance; Hele's School, St.

David's, Exeter.



255

• **Tracey Emin**

(British, b.1963)

'The Stain'

The complete hand-stitched booklet, issued to coincide  
with the artist's solo exhibition for the British Council at the  
Venice Biennale 2007

The booklet 10.5 x 7.5cm

In the original envelope, inscribed 'Tracey Emin Venice 07'

in pencil to envelope

\*£200 - 300



255

\* All lots subject to a buyers premium of 25% plus vat @ 20%

256

• Edward Wolfe  
(British, 1897-1982)

Song of Songs

The set of twelve  
coloured lithographs

on silver paper  
Each 36 x 26.5 cm

All signed lower right  
in pencil on the mount

and numbered

200/250 lower left,

unframed, presented in  
a green Solander box,

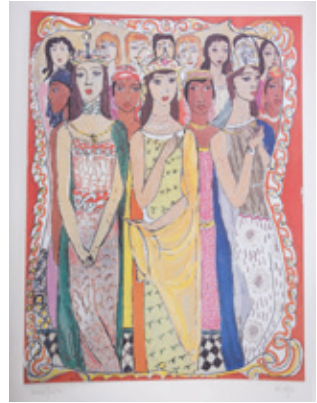
together with a note

and a collection of  
cards from Norman

Douglas Hutchinson

(1932-2010)

\*£150 - 200



Provenance; A gift by Norman Douglas Hutchinson and  
by family descent



257

• Norman Douglas Hutchinson  
(British, 1932-2010)

'St. Front from Le Suisse'

Pastel

22 x 28.5cm

Signed and inscribed on the reverse  
and dated December 1990

\*£80 - 120

Villa Le Suisse in St. Front, Duras,  
France was the home of the artist

Provenance; A gift by the artist and by  
family descent

258

Thuline (Belgian, 20th Century)

Highland cow

Acrylic and pastel

39.5 x 56.5cm

Signed lower right

\*£60 - 80



• denotes lots affected by Artist's resale rights - refer to conditions of sale.



259

• Michael Morgan (British, 1928-2014)

Coastal landscape

Watercolour

11.5 x 24cm

Signed lower left

Dated '1995' and with the artist's own label on backing

\*£500 - 700



260

• Richard Slater (British, b.1927)

'Hamlet', a townscape

Watercolour

20.5 x 27cm

Signed lower left

\*£80 - 120



261

Nardini (Italian, b.1933)

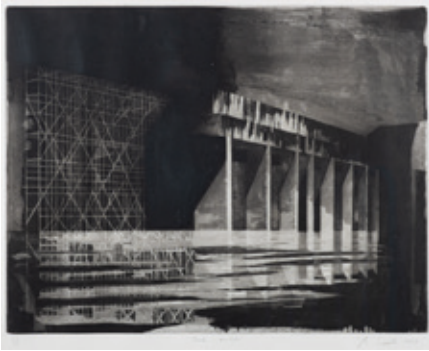
Portofino

Oil on canvas

58 x 89.5cm

Signed lower left

\*£40 - 60



262

• Michael Sandle (British, b.1936)

Bunker in Moonlight

Etching with Aquatint

53.5 x 66cm

Signed lower right and dated 1979.

Inscribed with the title lower centre and numbered 25/30 lower left

A view of a flooded, disused WW2 submarine bunker.

This image was showcased in an exhibition of the artist's works in 2018 at the Grosvenor Museum called Monumental Rage, timed with the centenary of the end of World War I

\*£300 - 400



263

• Paul Ayshford Methuen (British, 1886-1974)

King Alfred's tower, Somerset, 1965

Pen, ink and watercolour

29 x 40.5cm

Signed lower right

\*£300 - 400

• denotes lots affected by Artist's resale rights - refer to conditions of sale.



264

• Paul Ayshford Methuen (British, 1886-1974)

Landscape with buildings and tower in the distance

Pencil and watercolour

29 x 41.5cm

Signed lower right and dated 17 August 1952 lower left

\*£300 - 400

265

• Paul Ayshford Methuen  
(British, 1886-1974)

Landscape with a house and  
a building with tower

Charcoal and coloured chalks

20 x 21.5cm

Signed lower left and  
inscribed lower right and  
dated 14.8 1954

\*£300 - 400



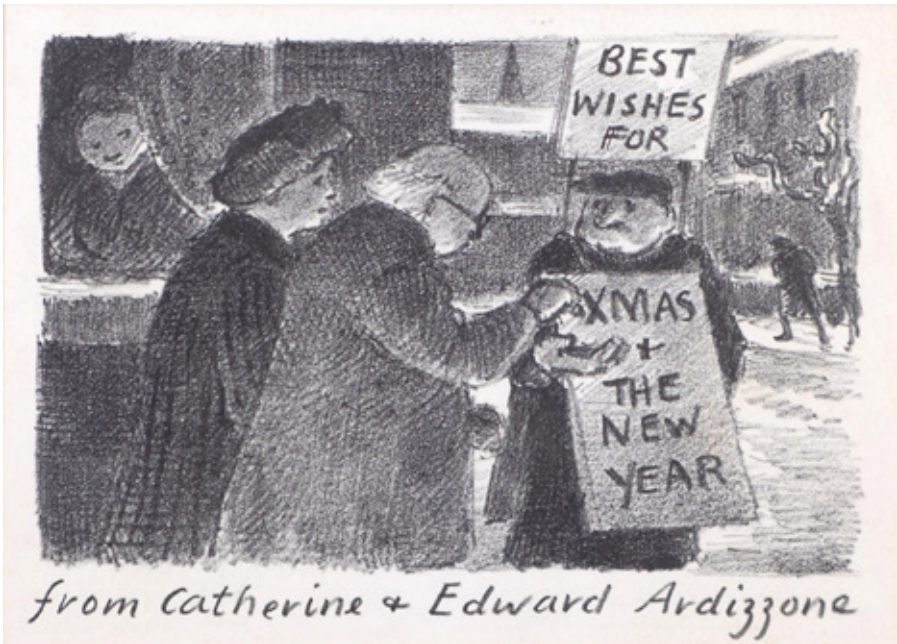
\* All lots subject to a buyers premium of 25% plus vat @ 20%



266

• Wyndham Lewis  
(British, 1882-1957)  
Gilbert Keith Chesterton  
and Mrs Desmond Flower  
Two lithographs  
Each 37 x 26.5cm  
Both signed and dated  
1932

\*£150 - 250



267

• Edward Ardizzone  
(British, 1900-1979)  
'Best wishes for Xmas + the New Year  
from Catherine & Edward Ardizzone'  
Charcoal drawing  
14 x 20cm  
Framed and glazed

\*£400 - 600

• denotes lots affected by Artist's resale rights - refer to conditions of sale.





268  
Yoko Omomi  
(Contemporary)  
Cityscape  
Oil on canvas  
44.5 x 60cm  
\*£40 - 60



269  
Iain Walker  
(British, d. 2022)  
Prague cathedral with fan vaults  
Oil on canvas  
66 x 80cm  
\*£40 - 60



270  
L. Brooksby  
(British, Contemporary)  
Racehorses  
Oil on canvas  
66 x 92.5  
Signed lower right  
\*£60 - 80



271  
L. Brooksby  
(British, Contemporary)  
Victorian Peek and  
Screwdriver cantering  
down to the start of  
the Woodcote Stakes,  
Epsom, 2004  
Oil on board  
25.5 x 33.5cm  
\*£40 - 60



272  
L. Brooksby  
(British, Contemporary)  
On Exmoor, hunting  
Oil on canvas  
49.5 x 70cm  
\*£40 - 60



273  
L. Lygo  
(British, Contemporary)  
Arabian horse  
Oil on canvas  
50.5 x 60.5cm  
Signed lower left  
\*£40 - 60

274  
L. Lygo  
(British, Contemporary)  
Four abstract paintings  
Oil on canvas  
Each 52 x 40.5cm  
\*£40 - 60



\* All lots subject to a buyers premium of 25% plus vat @ 20%



275

275  
**L. Brooksby (British, Contemporary)**  
 Exe Valley hounds  
 Oil on canvas  
 49 x 58.5cm  
 Signed lower left

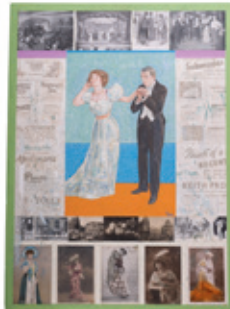
\*£60 - 80



276

276  
**L. Lygo (British, Contemporary)**  
 Cityscape and  
 geometrical abstracts  
 Seven watercolours  
 The larger 15 x 21.5  
 Signed lower left

\*£40 - 60



277

277  
**L. Lygo (British, Contemporary)**  
 Music Hall  
 Two oil and mixed media collages  
 on canvas  
 The larger 74 x 54.5cm

\*£40 - 60



278

278  
**L. Lygo (British, Contemporary)**  
 Bankside  
 Oil and collage on board  
 116.5 x 153cm  
 Monogrammed lower right

\*£80 - 120

• denotes lots affected by Artist's resale rights - refer to conditions of sale.



279

279

L. Lygo (British, Contemporary)

Three abstracts

Oil on canvas

The largest 102 x 102cm

\*£40 - 60

280

L. Lygo (British, Contemporary)

Chinatown London

Oil and collage on board

Signed lower right

\*£80 - 120



280

281

Tacita Fontana

(Italian, 1904-1985)

Listening to Churchill

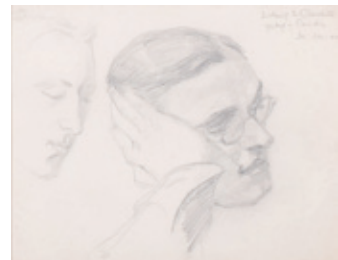
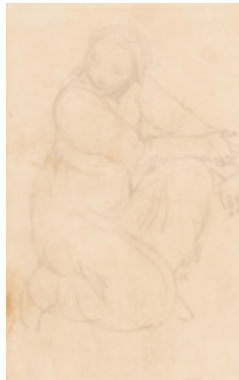
Pencil drawing

26 x 33cm

Dated '30 Dec. 41'

Together with a pencil study of a woman by the same artist (2)

\*£40 - 60



281

282

Connie Fenn

(British, 1933-2001)

Landscape

Oil on canvas

29 x 39cm

Signed lower right

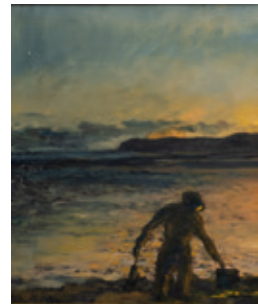
Together with Iain Walker,

Evening near Rye, oil on

canvas

(2)

\*£80 - 120



282

\* All lots subject to a buyers premium of 25% plus vat @ 20%



283  
 • André Bicât  
 (British, 1909-1996)  
 'Goose Girl'  
 Etching  
 15 x 17cm  
 Artist's proof, signed and  
 dated in pencil

\*£80 – 120

Provenance: gift from the artist, Christmas 1988  
 Together with an etching of a village landscape by the same artist (2)



284  
 Dick Boulton  
 (British, Contemporary)  
 Rose Wood Alder  
 Watercolour  
 22 x 23.5cm  
 Signed and date '00'  
 lower right  
 Together with a drawing  
 'Wimbledon Common' by  
 Iain Walker, 1993 (2)

\*£60 - 80

284



285

285  
 Iain Walker (British, d. 2022)  
 Jacob's Dream  
 Oil on canvas  
 120 x 197cm  
 Framed

\*£100 - 150

286  
 Iain Walker (British, d. 2022)  
 Wrestlers  
 Oil on canvas  
 182 x 137cm

\*£80 - 120



286

• denotes lots affected by Artist's resale rights - refer to conditions of sale.

287

Iain Walker (British, d. 2022)

The Other Side

Oil on board

111 x 154cm

\*£100 - 150



287

288

Iain Walker

(British, d. 2022)

Transfigured Night-From

A. Schönberg

Oil on canvas

90 x 121cm

Signed lower right

\*£60 - 80



288

289

L. Brooksby

(British, Contemporary)

Down at the start, Derby

Day

Oil on canvas

38 x 48.5cm

\*£60 - 80



289

290

• Adrian Maurice

Daintrey

(British, 1902-1988)

Standing female nude

Pencil drawing

31 x 24cm

Signed, inscribed, and dated '1924-26' lower right

\*£100 - 150



290



291

291

• Malcolm Milne (British, 1887-1954)

Waterfall behind Locarno on the Swiss-Italian border

Watercolour

35 x 26.5 cm

\*£80 - 120

292

Iain Walker (British, d. 2022)

Evans and the Labyrinth-Knossos

Oil on canvas laid on panel

122 x 198cm

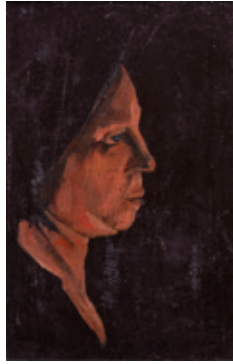
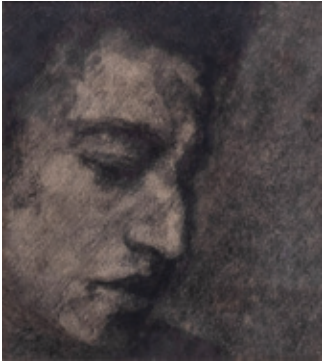
Signed lower right

\*£100 - 150



292

\* All lots subject to a buyers premium of 25% plus vat @ 20%

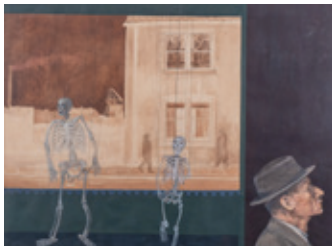


293  
 Iain Walker  
 (British, d. 2022)  
 Portrait of Askenazy, 1979  
 Charcoal drawing  
 18 x 16cm  
 Together with an oil head  
 study by the same artist  
 in the manner of Georges  
 de la Tour, dated 1968 (2)  
 \*£40 - 60



294  
 Iain Walker  
 (British, d. 2022)  
 Early figural study  
 Oil on board  
 39.5 x 36cm  
 Signed and dated '63'  
 lower right  
 Together with a pencil  
 drawing 'On a Pale  
 Horse' by the same artist  
 (2)

\*£40 - 60



295  
 Iain Walker  
 (British, d. 2022)  
 Pawns in the  
 Game series  
 Six gouache  
 paintings  
 Each 50.5 x  
 69cm

\*£60 - 80

• denotes lots affected by Artist's resale rights - refer to conditions of sale.

296

**June Mendoza (Australian b.1924)**

Portrait of a lady

Pen, ink and colour crayon

64.5 x 49.5cm

Signed lower right

\*£100 - 200



297

**Asian School (20th Century)**

A beach scene

Oil on canvas

59.5 x 69.5cm

Signed lower left and dated 95.7

\*£100-200



298

**Ted Lewis (Australian, b.1958)**

Grazing the Rocky near Euchareena

Oil on board

24.5 x 34.5cm

Signed lower right

\*£100 - 150



\* All lots subject to a buyers premium of 25% plus vat @ 20%



299

Luo Yang  
(Chinese, b.1984)

Untitled nude

64 x 93.5cm

Signed lower right and  
numbered 4/6

\*£500 - 700



300

• Francis Hewlett  
(British, 1930-1912)

Cloud over Flushing

Oil on canvas

75.5 x 75.5cm

Initialed lower right and

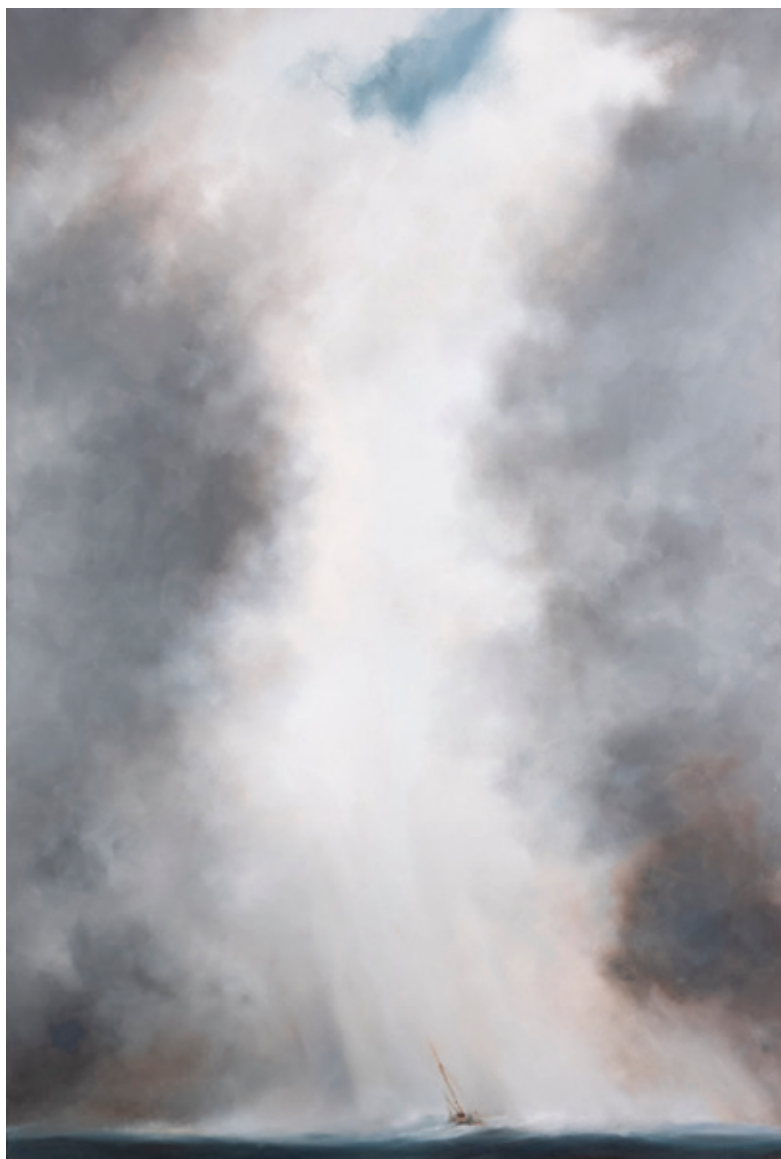
dated 73 and dated

21.10.73 on the reverse.

\*£200 - 300

Provenance; The artist's  
estate





301

• Anthony Amos (British, 1950-2010)

'Sky'

156 x 105cm

Signed on the reverse, inscribed with  
the title and 'painted in Totnes Jan 09'

\*£2500 - 3000

\* All lots subject to a buyers premium of 25% plus vat @ 20%



302

• Anthony Amos (British, 1950-2010)

'Climbing the Shrouds'

Oil on board

58.5 x 77.5cm

Signed on the reverse, inscribed with  
the title and 'painted SI? 08'

\*£1500 - 2000



303

Tony O'Malley (Irish, 1913-2003)

'Knills Steeple and crows in winter'

Gouache and crayon

25.5 x 38cm

Signed lower right, inscribed with the title lower centre and dated 2/69

\*£700 - 900

Provenance; Porthmeor Gallery, St. Ives

304

Tony O'Malley

(Irish, 1913-2003)

'Blackbird Feathers & Fishbones'

Gouache, feathers and pen and ink

29 x 41.5cm

Initialed lower right, dated 13/5/84 and inscribed with the title lower left

\*£600 - 800



\* All lots subject to a buyers premium of 25% plus vat @ 20%



305

305  
 Clare White (British 1903-1997)  
 'Joeys Kingdom' St. Ives  
 Pencil and watercolour  
 35.5 x 48cm  
 Initialed lower right

\*£400 - 600

306  
 Charles Ginner (British, 1878-1952)  
 The Cathedral, 1921  
 Woodcut  
 32.5 x 26,5cm  
 Signed lower right  
 On laid paper with windmill watermark,  
 with full margins.

\*£300 - 400



306



307

307  
 Mychael Barratt  
 (Canadian, 20th Century)  
 'Life Imitating Art II'  
 Etching with aquatint  
 52.5 x 42cm  
 Signed lower right,  
 inscribed with the  
 title lower centre and  
 numbered 146/175 lower  
 left

\*£100 - 200

• denotes lots affected by Artist's resale rights - refer to conditions of sale.



308

• Robert Organ (British, 1933-2023)

'On a round table 1'

Oil on canvas

136 x 195cm

Signed and dated 1999-2002.07 on the reverse

One of the artist's larger and finest works and a pair to 'On the round table'

\*£8000 - 12000



309  
George Moore (British, 20th century)  
Brixham  
Oil on canvas  
44x54cm

\*£50 - 80



310  
Jorge Aguilar-Agon (Spanish, b.1936)  
Harbour scene  
Oil on canvas  
69.5 x 90cm  
Signed lower right

\*£40 - 60



311  
Laurence George (British, 20th Century)  
Brixham marina  
Oil on canvas  
60 x 49.5cm

\*£80 - 120



312  
• John Horsewell (British, b.1952)  
Fishing boat on the shore  
Acrylic on canvas  
60 x 120cm  
Signed lower right

\*£80 - 120



313  
• John Horsewell (British, b.1952)  
View on the coast  
Acrylic on canvas  
61 x 91cm  
Signed lower right

\*£80 - 120

• denotes lots affected by Artist's resale rights - refer to conditions of sale.



314  
**Ernest Higgins Rigg (British, 1868-1947)**  
 Loading the boat at low tide  
 Oil on canvas  
 50 x 67.5cm  
 Signed lower left

\*£600 - 800

315  
**Robin Gibbard (British, 1930-2014)**  
 Blue tits amongst blossom  
 Watercolour  
 74 x 49cm (oval)  
 Signed below

\*£80 - 120



316  
**British School, 20th Century**  
 View of harbour  
 Oil on canvas  
 60 x 59cm  
 Signed and dated 'Dunn '70' lower right

\*£80 - 120



\* All lots subject to a buyers premium of 25% plus vat @ 20%



317  
David J. Lawrence  
(British, contemporary)  
Sea Holly and Sea  
Bindweed  
Oil on canvas  
19 x 24cm  
Signed lower right  
\*£40 - 60



318  
David J. Lawrence  
(British, contemporary)  
Cowslips and Harebell  
Oil on canvas  
19 x 24cm  
Signed lower right  
\*£40 - 60



319  
David J. Lawrence  
(British, contemporary)  
Poppyfields  
Oil on canvas  
19 x 24cm  
Signed lower right  
\*£40 - 60



320  
David J. Lawrence  
(British, contemporary)  
Primroses and Violets  
Oil on canvas  
19 x 24cm  
Signed lower right



321  
David J. Lawrence  
(British, contemporary)  
'To be a Farmer's Boy'-Bury Village near  
Dulverton, Somerset  
Oil on canvas  
Signed lower right

\*£40 - 60

\*£70 - 90



322  
Brian Chugg (British, 1926-2003)  
Landscape with trees in the  
foreground  
Oil on board  
13.5 x 29cm  
Signed and dated '1963' lower  
right

\*£60 - 80

• denotes lots affected by Artist's resale rights - refer to conditions of sale.



323

Franz Laskoff (Polish, 1869-1921)

Portrait of a lady wearing a wide brimmed hat

A lithographed cut out

26 x 16.5cm

signed lower right,

Together with two Folies Bergere

gouaches of dancing girls signed

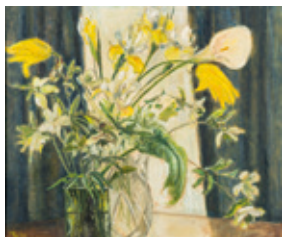
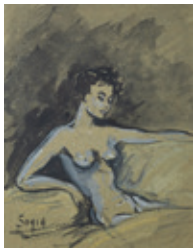
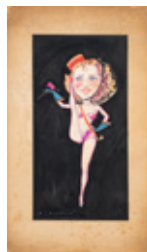
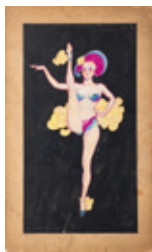
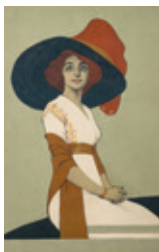
M. Crichton, each 39 x 21cm and a

pair of monochrome watercolours

of nudes, each 22 x 17cm

inscribed 'Lucille' and 'Sonia' (5)

\*£100 - 200



324

British School, 20th Century

Still life of daffodils, irises and lily in a vase and a glass jug

jug

Oil on board

48.5 x 58.5cm

Initialed 'MBW' lower right and dated 1983

\*£60 - 80

325

• Brian Rice

(British, b.1936)

'Sightline from AD

via WGH to BWR'

Acrylic and mixed

media on canvas

92 x 112.5cm

Inscribed with the

title on the reverse,

signed, dated

'March/April 1996'

and numbered

BR13

\*£2000 - 2500



Provenance; Messum's, London, The estate of the artist

Literature; 'Brian Rice Catalogue Raisonné of Paintings 1952-2016', published by Sansom & Co., with an introductory essay by Andrew Lambirth. Number 380

\* All lots subject to a buyers premium of 25% plus vat @ 20%



326

• Brian Rice (British, b.1936)

'Bulk'

Acrylic & mixed media on canvas

61 x 71cm

Signed lower right

Inscribed with the title on the reverse, signed, dated  
'April 1998' and numbered BR26

\*£1800 - 2200

Provenance; Messum's, London, The estate of the  
artist

Literature; 'Brian Rice Catalogue Raisonné of Paintings  
1952-2016' Published by Sansom & Co., with an  
introductory essay by Andrew Lambirth. No.439

327

• Ron Folland  
(British, 1932-1999)

On deck at sea

Oil on board

43.5 x 120.5cm

Signed lower right

\*£60 - 80



328

• Ron Folland  
(British, 1932-1999)

A panoramic view of a  
harbour

Oil on board

42.5 x 120.5cm

Signed lower left

\*£60 - 80



329

• Michael J. Austin  
(British, b.1959)

Study of a female nude

Oil on board

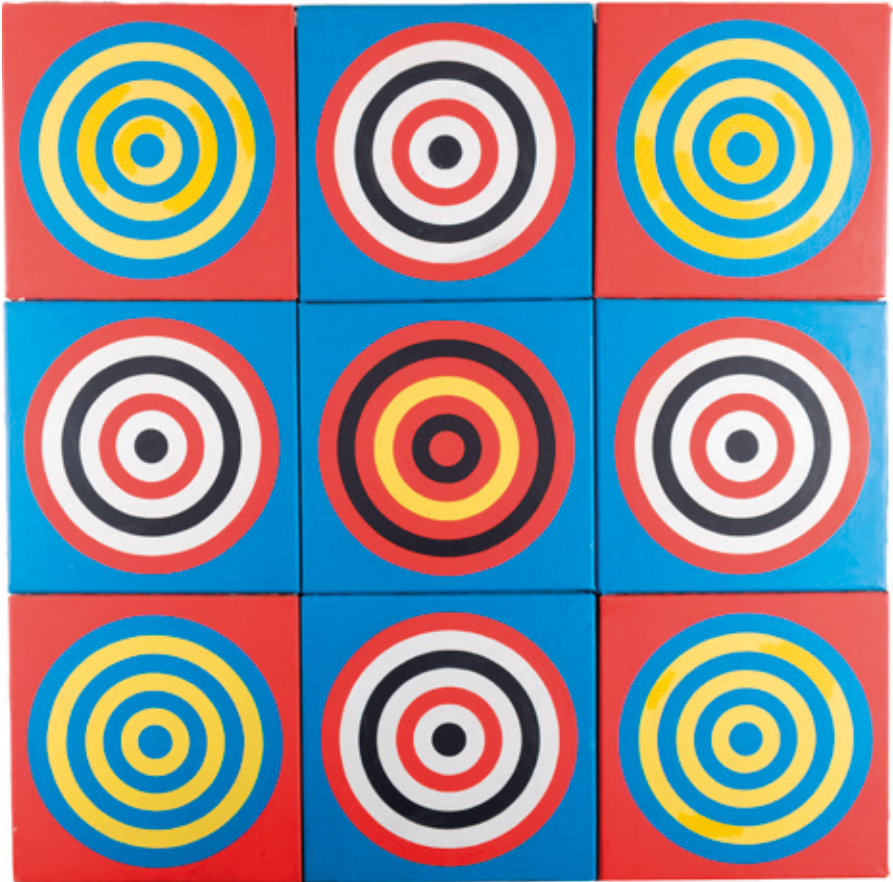
48.5 x 38.5cm

Signed lower right and  
dated '94

\*£600 - 800



\* All lots subject to a buyers premium of 25% plus vat @ 20%



330

• Brian Rice (British, b.1936)

'To Superman'

Nine oils on canvas joined as one

92.5 x 92.5 cm overall

Stencilled on the reverse ' TOP BRIAN RICE AUGUST

1965 "TO SUPERMAN" 35 x 36 INCHES '

\*£2000 - 2500



331

• David Bailey C.B.E. (British, b.1938)

The Kray Brothers

Photograph

35 x 34cm

Limited edition No. 3/6

Signed and dated '84' on the reverse

Together with a letter from Ronnie Kray dated

30/7/88, and a slip from the Broadmoor Hospital

\*£6000 - 8000



332

**Man Ray (Emmanuel Radnitzky, American, 1890-1976)**

An archival collection including photographs and memorabilia:

Portraits of Jacqueline Goddard (1912-2003), circa 1930, including two gelatin silver prints (each 15 x 19.5cm) and eight negatives (each 10 x 12.5cm);

Three surrealist photographic portraits including a version of 'Suicide' and a negative (the largest 9 x 6.5cm);

Three hand-written certificates of authenticity of two oil paintings including 'La bonne route' issued by Juliet Man Ray (the artist's wife, 1911-1991);

Photographs of the artist's friends and family, including a Polaroid portrait of Juliet Man Ray and Alexina 'Teeny' Duchamp (wife of Marcel Duchamp, French surrealist artist);

A copy of the catalogue for the 'Optic-Topic' exhibition with hand-written notes by Juliet Many Ray and copy of correspondence relating to the exhibition including a letter from Man Ray to GianCarlo Montebello;

And a quantity of Man Ray's photographs issued as postcards, exhibition openings' invitations, and a newspaper of 2003 clipping relating to Jacqueline Goddard

**\*£3000 - 5000**

• Provenance- Presented by Jacqueline Goddard to daughter in law Mrs S Creed-Miles, long term family friend of the vendor.



• denotes lots affected by Artist's resale rights - refer to conditions of sale.

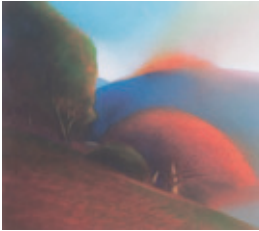


\* All lots subject to a buyers premium of 25% plus vat @ 20%



333  
Tina Morgan (British, b.1952)  
'By the shore, Exmouth'  
Oil on board  
34 x 44cm  
Signed lower right

\*£150 - 250



334  
• Graham Ovenden (British, 1943-2022)  
'The Secret Valley'  
Print  
25 x 28cm  
Signed lower right and inscribed with the title lower left

\*£40 - 60



335  
• Sven Berlin  
(British, 1911-1999)  
Self portrait  
Oil on board  
40.5 x 30.5cm  
Signed lower right and  
dated 74

\*£200 - 300

Provenance; Belgrave,  
St. Ives

• denotes lots affected by Artist's resale rights - refer to conditions of sale.





336

• Anthony Amos (British, 1950-2010)

Twilight Beach Scene

Oil on canvas

75 x 105 cm

Signed on a label on the reverse

\*£1500 - 2000



337

Continental School (Contemporary)

A landscape scene with a harbour

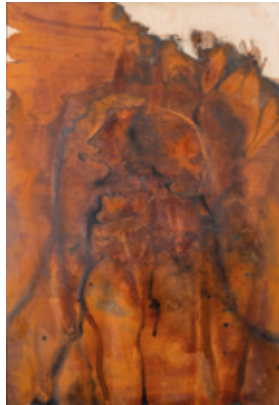
Oil on canvas

111 x 130cm

Signed 'pollaq 1984' lower right

\*£100 - 150

338-9 No Lots



340

Julian Grater (b.1959)

'Ngura (Uluru) II' (a

diptych)

1992

Mixed media on paper

113 x 70cm

\*£80 - 120



341

• Henryk Gotlib

(Polish/British,

1890-1966)

'Female Nude'

Charcoal drawing

51x75cm

Signed lower right

\*£150 - 200

• denotes lots affected by Artist's resale rights - refer to conditions of sale.

342  
Phillipa Claydon British, (b.1955)  
'Followers'  
Mixed media  
Approximately 73x70cm

\*£60 - 80



343  
• Margaret Hunter  
(British, b.1948)  
Separate Beings-Female &  
Male  
1988  
A pair of oils on canvas  
79.5 x 39.5cm

\*£150 - 200

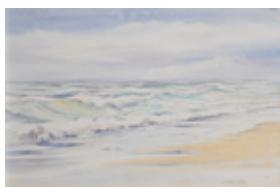


344  
• Henryk Gotlib  
(Polish/British, 1890-1966)  
Female nude  
Ink on paper  
Approximately 20 x 23cm

\*£60 - 80



\* All lots subject to a buyers premium of 25% plus vat @ 20%



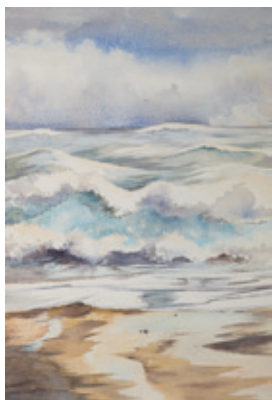
345

345  
**Geoffrey Plant**  
(British, 1939-2000)  
Wave studies  
Six watercolours  
The largest 35 x 53cm  
All signed lower right  
\*£50 - 70



346

346  
**Geoffrey Plant**  
(British, 1939-2000)  
Six miscellaneous  
watercolour views  
including seaside houses  
The largest 35 x 36.5cm  
Three signed lower right  
and left corners  
\*£50 - 70



347

347  
**Geoffrey Plant**  
(British, 1939-2000)  
Wave and coastal studies  
Six watercolours  
The largest 56 x 37cm  
Four signed lower right  
\*£50 - 70

348  
**Geoffrey Plant**  
(British, 1939-2000)  
Wave and coastal studies  
Nine watercolours  
The largest 25 x 36cm  
Five signed lower right  
\*£40 - 60



348

• denotes lots affected by Artist's resale rights - refer to conditions of sale.



349  
**Geoffrey Plant (British, 1939-2000)**  
 Seagull studies  
 Six watercolours  
 The largest 35 x 31cm  
 Three signed lower right

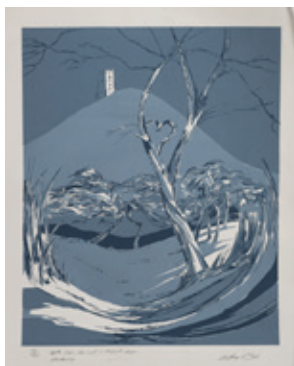


350  
**Geoffrey Plant (British, 1939-2000)**  
 Miscellaneous studies including still  
 lives with fish and harbour views  
 Three pastels and two watercolours  
 The largest 31 x 47cm

\*£40 - 60

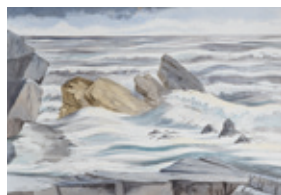
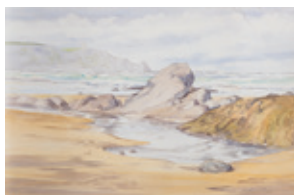
\*£40 - 60

351  
**Geoffrey Plant**  
**(British, 1939-2000)**  
 Coastal and seaside  
 studies  
 Five watercolours  
 The largest 37.5 x 54.5  
 cm  
 Three signed lower right  
 \*£80 - 120



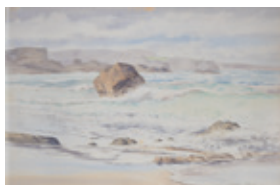
351

352  
**Geoffrey Plant**  
**(British, 1939-2000)**  
 Coastal studies  
 Four watercolours  
 The largest 63 x 46cm  
 All signed lower left and  
 right  
 \*£80 - 120



352

353  
**Geoffrey Plant**  
**(British, 1939-2000)**  
 Coastal studies  
 Four watercolours  
 The largest 74.5 x 54cm  
 Three signed lower right  
 \*£80 - 120



353

\* All lots subject to a buyers premium of 25% plus vat @ 20%



354

**Geoffrey Plant (British, 1939-2000)**

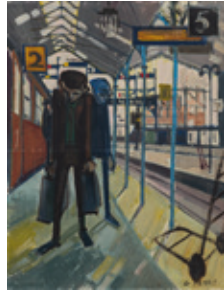
Tor and Abbey, Glastonbury; together with Apple trees, tor and St. Michael's tower, Glastonbury

Two pairs of limited edition prints, 37-38/100

The largest 49.5 x 40cm

All signed lower right margin and inscribed and dated 'April 1983' lower left margin

**\*£50 - 70**



355

**Geoffrey Plant (British, 1993-2000)**

A view at a train station with a passenger walking in the foreground; together with a study of a boy on a bike

Oil on canvas

The largest 66 x 50cm

**\*£40 - 60**



356

**Ken Abendana Spencer (Jamaican, 1929-2005)**

Four pictures depicting dancing couples and pedestrians

Ink and watercolour

53 x 18cm

All signed lower left

**\*£50 - 70**



357

**Ken Abendana Spencer (Jamaican, 1929-2005)**

Seven studies including military figures, cowboy and a native American

Ink and watercolour

53 x 18cm

All signed lower left and right

**\*£80 - 120**

• denotes lots affected by Artist's resale rights - refer to conditions of sale.

358

Ken Abendana Spencer  
(Jamaican, 1929-2005)

Five studies of Flamenco dancers  
Ink and watercolour

53 x 18cm

All signed lower left and right

\*£80 - 120



359

Ken Abendana Spencer  
(Jamaican, 1929-2005)

Five studies of male Flamenco dancers  
and musicians

Ink and watercolour

53 x 18cm

All signed lower left and right

\*£80 - 120



360

James Brindle (British, 1892-1977)

Hesketh bank harbour, Nr. Preston

Oil on board

31.5 x 40.5cm

Signed lower right

together with two oils on board of  
a deer and a boating scene and a  
watercolour of a bird of prey (4)

\*£40 - 60



361

Jessie Walmesley-White (British, 20th Century)

Flowers of late summer

Watercolour

53.5 x 43cm

Signed lower right.

\*£40 - 60

\* All lots subject to a buyers premium of 25% plus vat @ 20%



362

362  
 In the manner of Sir  
 Kyffin Williams RA  
 (British, 1918-2006)  
 A mountainous view with  
 figures in the foreground  
 Oil on board  
 49.5 x 59.5 cm  
 Inscribed 'Anglesey' on  
 reverse

\*£250 - 350



363

363  
 Le Tuong  
 (Vietnamese, b.1970)  
 Still life compositions  
 Two oils on canvas  
 88.5 x 74cm & 60 x 50cm  
 \*£200 - 300



364  
 Michael Dog  
 (British, 20th Century)  
 Abstract  
 Oil and resin  
 121 x 60cm  
 Signed lower right  
 \*£60 - 80



364

365  
 Dinah (20th Century)  
 A collection of bar scenes  
 Five oils on canvas  
 43.5 x 53.5cm  
 All signed and dated 77  
 (5)  
 \*£80 - 120



365



• denotes lots affected by Artist's resale rights - refer to conditions of sale.



366  
 Colin Spring  
 (Contemporary)  
 Cowboy on a rocking  
 horse  
 Oil on board  
 60.5 x 65cm  
 Signed lower left

\*£40 - 60



366



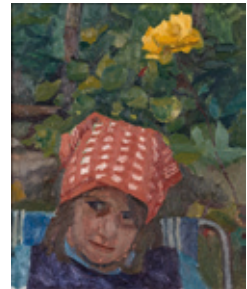
367

367  
 Christopher Woodger (British, 20th Century)  
 Abstract  
 Oil and plaster on canvas  
 91.5 x 142cm  
 Inscribed on the reverse and dated 1965

\*£40 - 60

368  
 • Francis Hewlett  
 (British, 1930-1912)  
 Ghosts  
 Oil on canvas  
 37 x 49cm  
 Initialed lower right  
 and dated 74  
 Together with 'The  
 spotted headscarf  
 (Francesca)', oil on  
 canvas board, 26.5 x  
 22cm

\*£150 - 200



368

Provenance; The artist's estate (2)

369  
 • Francis Hewlett  
 (British, 1930-1912)  
 'Carol with Rhododendrons'  
 Pencil  
 54.5 x 75cm  
 Signed lower left and inscribed with  
 the title

Together with a pencil drawing  
 of a nude, 37 x 55.5cm, signed  
 lower right and dated 2 July 76  
 and a pencil drawing of a seated  
 gentleman, 22.5 x 15cm, signed  
 lower left and dated 50

\*£130 - 140

Provenance; The artist's estate (3)



369



370

• Francis Hewlett  
(British, 1930-1912)

'Nasturtiums'

Oil on panel

27.5 x 20cm

Provenance; Messum's,  
London 2002, The artist's  
estate

Together with 'Meadow',  
oil on board, 24 x 29.5cm

Provenance; The artist's  
estate (2)



371

• Francis Hewlett  
(British, 1930-1912)

'Tree in Rosehill Gardens'

Pencil

41 x 31cm

Signed lower left, dated  
1960 and inscribed with  
the title lower right

Together with a charcoal  
and white chalk drawing  
of Trees

75 x 55cm

\*£100 - 150

Provenance; The artist's  
estate (2)



372

• Jennifer McRae (British, b.1959)

'Mixed Messages'

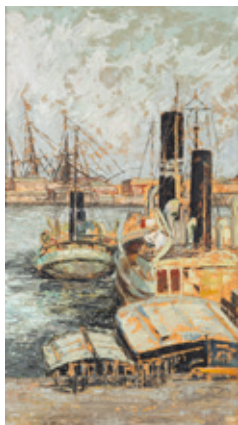
Mixed media on paper

35 x 21cm

\*£200 - 300

Provenance; Anthony Hepworth Fine Art, Bath

• denotes lots affected by Artist's resale rights - refer to conditions of sale.



373  
**Betty Sandham**  
 (British, 20th Century)  
 Shipping in a Port  
 Oil on board  
 90 x 51cm  
 Signed on the reverse  
 and inscribed '2 Royal  
 Clarence Yard, Gosport'  
 \*£40 - 60



374  
 • **After Andre Dunoyer de Segonzac**  
 (French 1884-1974)  
 'La route de Grimand'  
 Reproduction  
 50 x 72.5cm  
 Together with a reproduction after Picasso of bulls and  
 an  
 abstract watercolour 'Updraught' by Katrina Solano  
 (3)

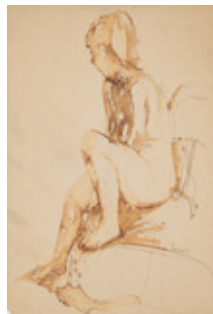


375  
**Betty Sandham**  
 (British, 20th Century)  
 Nude studies  
 Two watercolours  
 58 x 84cm and smaller  
 Both signed and dated  
 Together with a  
 watercolour with two  
 women in white by a  
 different hand (3)  
 \*£80 - 100



\*£30 - 50

376  
**Betty Sandham**  
 (British, 20th Century)  
 Nude studies  
 A watercolour, a collage and a  
 pastel  
 75 x 54cm and smaller  
 All signed (3)



\*£60 - 80



377  
British School (20th Century)  
White cat on a window pane  
Oil on board  
39 x 25cm  
Signed 'Ropp' and dated '62' lower right

\*£40 - 60

- Please note that this painting is not by the photographer William Ropp (b.1962)

378  
F.J. Widgery (British, Contemporary)  
English Channel from Woodbury  
Common  
Watercolour  
25 x 36cm  
Signed lower left

\*£150 - 250



379  
Frank Adams (British, b.1929)  
Landscape with a village in the distance  
Pencil and crayon  
Signed and dated 1989 lower left

\*£80 - 120

380  
Tina Stokes (British, b.1964)  
'Drifting Boats'  
Oil on board  
39.5 x 29cm  
Signed lower left and inscribed with the title and signed and dated 1977 on the reverse

\*£300 - 500



- denotes lots affected by Artist's resale rights - refer to conditions of sale.

381

• Danny Markey (British, b.1965)

Street Scene

Oil on canvas

102 x 126cm

Signed on the edge of the canvas and dated 1999

\*£300 - 500



381

382

C.G. Spicer (British, Contemporary)

Holmewood, Dartington

Oil on board

73 x 101cm

Signed lower right

\*£200-300



382

383

C.G. Spicer (British, Contemporary)

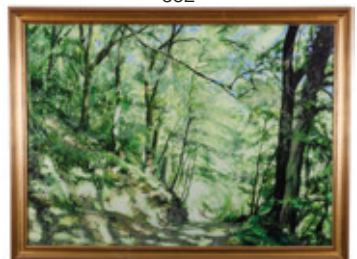
Holmewood path, Dartington

Oil on board

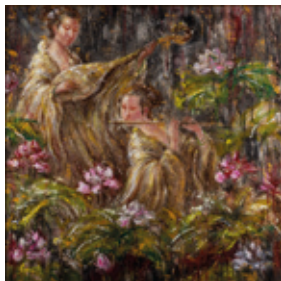
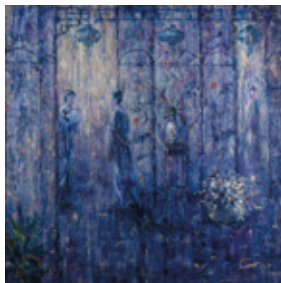
73 x 101cm

Signed lower right

\*£200-300



383



384

384

Shida Xue (Chinese, 20th Century)

Three Paintings portraying Women; subject matters include Musical Instruments and Interiors

Mixed Media including Oil paint and Gesso on Canvas

All 98 x 98 cm

All signed either lower left or lower right

\*£200 - 400

\* All lots subject to a buyers premium of 25% plus vat @ 20%



385  
**Rupert Pease (British 1906-1945)**  
 Seated man smoking at a table with  
 brass vessels  
 Oil on canvas  
 62.5 x 75cm  
 Signed lower right  
 Dated on the reverse 1938

\*£150 - 200



386  
**John Samuel Loxton**  
 (Australian, 1903-1971)  
 Drover and his dog with sheep in  
 landscape  
 Watercolour  
 48.5 x 55.5cm  
 Signed lower left

\*£200 - 300



387  
**Australian School,**  
**20th Century**  
 A coastal landscape  
 Oil on board  
 49.5 x 74.5cm  
 Indistinctly signed lower  
 right

\*£100 - 200



388  
**Graham Cox**  
 (Australian, b.1941)  
 Harbour Sandstone  
 Middle Head, Australia  
 Oil on board  
 40.5 x 30.4cm  
 Signed lower right and  
 signed, dated 1997 and  
 inscribed with the title on  
 the back board

\*£200-300

389  
**Maurice Boel (Belgian, 1913-1998)**  
 Landscape with a Church and cottage  
 Pencil  
 19.5 x 25cm  
 Signed lower right  
 Together with a print of goats and  
 another of a landscape with a village  
 beyond by the same hand. Both signed  
 and numbered (3)

\*£60 - 80



• denotes lots affected by Artist's resale rights - refer to conditions of sale.



390

Maurice Boel (Belgian, 1913-1998)

Landscape

Pen and ink and grey wash

23 x 39.5cm

Signed lower right and dated 70

Together with a charcoal drawing of two

nudes and a print entitled 'spelen met

vuur' by the same hand (3)

\*£100 - 120

391

Maurice Boel (Belgian, 1913-1998)

Coastal Scene

Oil on paper

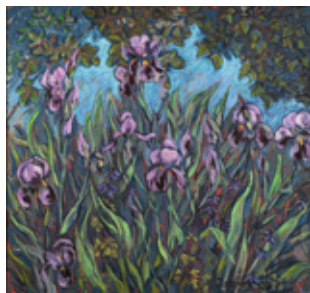
27 x 37cm

Signed lower left and dated 71

Together with a pen and ink sketch of a

dead and fallen tree by another hand

\*£120 - 150



392

Rupert Pease (British 1906-1945)

Portrait of a man in profile

Sepia chalk

12.5 x 11.5cm

\*£40 - 60

393

Jane Page (British, Contemporary)

Irises

Oil on canvas

69 x 74cm

Signed and dated '93 lower right

\*£40 - 60

394 - 400 No Lots



401



402

401

A circular bird's eye maple table, in Art Deco style, of recent manufacture; 76cm high, 65cm diameter

\*£30 - 50

402

An Edwardian jardiniere, in Arts & Crafts style, later painted black; the square top above frieze with pierced tulip designs; 93cm high, 26cm wide, 26cm deep

\*£20 - 30



403

403

An English Art Deco figured walnut bedroom cabinet, circa 1930; the quarter veneered top above two graduated drawers and two cupboard doors, with chrome plated handles; 107cm high, 75cm wide, 43cm deep

\*£70 - 100



404

404

An Art Deco figured walnut inverted breakfront side cabinet, 1930s; with a quarter veneered top above for small drawers with baton handles, doors to the sides enclosing shelves, an open shelf, on a plinth base; 84.5cm high, 116cm wide, 54cm deep

\*£150 - 250



405

405

A walnut and burr walnut chest of drawers, in Art Deco style, circa 1930; with raised back, the front with four graduated drawers, all with twin pendant bakelite disk handles with inset metal star centres; on a base formed as single bracket; 97cm high, 92cm wide, 46cm deep

\*£150 - 250



406

An oak draw leaf dining table and four chairs *en suite*, circa 1930s; the rectangular top with shallow bowed ends, on square section straight fluted legs to twin trestles, with a low shelf stretcher, 76cm high, 125cm long, 84cm wide (closed); the conforming chairs with yellow upholstered backs and seats; 85cm high, 46cm wide

\*£100 - 200



406

407

A nest of three teak tables by G Plan, circa 1970s; the rectangular tops on rectilinear side supports, the largest 49cm high, 53cm wide, 43cm deep; and a stained hardwood and laminate drinks trolley, with metal castors, circa 1960s, 69cm high, 75cm long

\*£100 - 150



407

408

A pair of Ercol Jubilee stained beech and button upholstered open armchairs, circa 1970s; the loose backs and seats within spindle backs and arm rests, 104cm high, 74cm wide; an Ercol stained elm coffee table, circa 1970s, 36cm high, 105cm long, 46cm wide; and an Ercol stained elm Canterbury table, circa 1970s, 50cm high, 54cm high

\*£180 - 220



408

409

A stained elm dining table and four chairs *en suite*, by Ercol, circa 1970s; the rectangular top with shallow bowed sides, on trestle ends with a stretcher, 73cm, 152cm long, 84cm wide; the elm and beech chairs with openwork splats with stylised Prince of Wales feathers, 89cm high, 45cm wide

\*£150 - 250



409

410

An Ercol blonde elm and beech dining table, and four elm and beech 'Quaker' chairs *en suite*, circa 1970s; the rectangular top with rounded corners, on splayed legs, 71cm high, 152cm long, 77cm wide; the chairs with arched backrests, 96cm high, 42cm wide

\*£200 - 400



410



411

411

A Sorrentoware marquetry and gilt metal mounted cocktail wagon, mid 20th century; the top and shelf below decorated with floral sprays on quarter veneered reserves with foliate borders; with knopped supports and three conjoined metal circlets for decanters beneath twin drop leaves opening to form a circular top, with galleried edge, on spoked front wheels and back castors; 70cm high, 83cm long overall including handle.

\*£100 - 150



412

412

Alvar Aalto (Finnish 1898-1976), for Finmar Ltd, a Model 906 two tier coffee table in birch and plywood, circa 1930s; on bentwood legs, labelled Finmar Ltd to the underside; 57cm high, 70cm wide overall

\*£200 - 300



413

413

A teak writing bureau desk, by Times Furnishings, circa 1970; the galleried top above sliding door and three short drawers, the lower section with three graduated drawers, on tapered legs with stretcher; 123cm high, 77cm wide, 42cm deep.

\*£60 - 100



414

414

An oak and glazed side cabinet, circa 1960s; the top with raised back edge and chamfered front and sides, with sliding doors to an arrangement of shelves, on short splayed legs; 100cm high, 107cm wide, 31cm deep

\*£80 - 120

415

An Ercol stained elm sideboard, circa 1970s; the front with three drawers flanked by opposing doors, all with recessed knob handles; on metal castors; 69cm high, 155cm wide, 44cm deep

\*£120 - 180



415

416

A Danish rosewood console table, attributed to Finn Juhl for Niels Vodder, circa 1950; the rectangular top with raised and cleated ends, on twin rectangular supports, the straight legs with two shaped stretchers; 69cm high overall, 152cm long, 48cm wide

Rosewood CITES sale licence No. 23GBA10RUY9IN

\*£700 - 1000

• denotes lots affected by Artist's resale rights - refer to conditions of sale.



416

417

A suite of rosewood dining room furniture, by Archie Shine for Merrow of Surrey, circa 1970s; comprising an oval extending dining table, 70cm high, 138cm long extended; six faux leather upholstered dining chairs, 97cm high, 50cm wide; a two-door side cabinet, 76cm high, 100 cm wide, 56cm deep; and a low table, 39cm high, 137cm long, 91cm wide

*Rosewood CITES sale licence number 23GBA10KLQ6T0*

\*£500 - 800



417

\* All lots subject to a buyers premium of 25% plus vat @ 20%



418

418  
A Penguin 'Donkey Bookcase Mk II', designed by Ernest Race for Isokon Plus, 1963; with cream painted wood open shelves on probably cherry wood straight splayed legs; 40cm high, 54cm long, 40cm wide

\*£150 - 250



419

419  
A pair of Danish rosewood and upholstered open armchairs, by Arne Vodder for Sibast Furniture, circa 1960s; the rectangular backs and seats with faux leather coverings, with shaped arms; the straight legs with 'H' form stretcher; 88cm high, 68cm wide

*Rosewood sale exemption licence applied for*

\*£250 - 350



420

420  
A glass topped and stone dining or centre table, modern; the round top on cruciform metal bearers, above the square section plinth; 78cm high, 130cm diameter

\*£150 - 250



421

421  
Five Danish 'Model 89' teak dining chairs, designed by Erik Buch for Povl Dinesen, late 1960s; with oatmeal coloured backs and seats; 79cm high, 48cm wide

\*£100 - 150



422

422  
A teak sideboard, by EH McIntosh & Co. Ltd., circa 1960s; the three drawers and twin opposing doors at the front within a channeled surround, the metal maker's plaque inside one door; on short, straight legs with peripheral stretchers; 78cm high, 175cm wide, 46cm deep

\*£200 - 300

423  
A Danish rosewood extending dining table, by Gudme Mobilfabrik, circa 1970s; with circular top and twin leaf inserts on a cruciform base; 70cm high, 123cm diameter, each leaf adding 49cm to the length  
*Rosewood sale CITES licence no. 23GBA109F2BK3*

\*£800 - 1200

• denotes lots affected by Artist's resale rights - refer to conditions of sale.



423

424  
A bird's eye maple and elm coffee table, by Cathedra, 1977; the square quarter veneered top on through stiles; 38cm high, 95cm wide, 95cm deep

\*£150 - 250



424

425  
A root wood and oval glass topped low table, modern; the root branches radiating up and outwards from a central stem; 44cm high, 164cm long, 125cm wide

\*£150 - 250



425

426  
A red faux leather covered wingback armchair, circa 1920; with broad armrests and padded seat, on castors; 79cm high, 85cm wide

\*£100 - 200



426

\* All lots subject to a buyers premium of 25% plus vat @ 20%



427

427  
After Charles & Ray Eames for Herman Miller, a model 670 lounge chair and model 671 ottoman, modern; laminated plywood veneer with black leather button upholstery, on metal frames; 80cm high, 83cm wide, the ottoman 43cm high, 63cm wide

\*£600 - 900

428  
Richard Hornby for Fyne Ladye furniture, an afrormosia writing desk or side table, 1960s; the top with moulded three-quarter gallery, above two drawers with recessed reeded fronts; on tapered legs with H form stretchers; 84cm high, 114cm wide, 49cm deep

\*£300 - 500

429  
A modern teak dining table, in three parts, the rectangular top on square section legs, 78cm high, 202cm long, 100cm wide

\*£500 - 700



428



429

• denotes lots affected by Artist's resale rights - refer to conditions of sale.



430

430  
A silver metal Murano Space Age nine light electrolier, 20th century; with coloured glass plates; of adjustable height, approximately 71cm diameter  
\*£300 - 500

431  
A pair of German leather upholstered 'Swing' lounge chairs with foot stools, designed by Reinhold Adolph for COR Germany, 1960's; with padded rectangular backs and straight arms, each on twin cantilever legs; the chairs 91cm high, 76cm wide

\*£600 - 900



431

\* All lots subject to a buyers premium of 25% plus vat @ 20%



432



433



434

432

• Philippe Starck, (French, born 1949), *S.T. Strange Thing*, a fabric upholstered and plastic tub chair, on four splayed legs; designed 2002; 77cm high, 97cm wide

\*£150 - 250

433

A Devon Guild wood table, modern; the rounded rectangular oak top with uneven edges above an ash frieze drawer and turned legs; 81cm high, 100cm long, 37cm deep

\*£100 - 150

434

After Walter Knoll, *Sessel 369*, a chromed metal and fabric bucket chair, last quarter 20th century; 70cm high, 73cm wide

\*£60 - 120

435

An Italian metal standard lamp by Pallucco, modern; the rectangular opaque fabric shade enclosing four electrical fittings, on a straight shaft to a cruciform base; 167cm high, 66cm wide across the base

\*£100 - 150

436

A walnut and softwood dining table, third quarter 20th century; the rectangular top on twin rectangular section pedestals, with baton cladding; 77cm high, 235cm long, 115cm wide

\*£250 - 350



435



436

• denotes lots affected by Artist's resale rights - refer to conditions of sale.





437

David Linley, London; a coromandel and ebony dining table, modern; the first of a limited edition; the cleated rectangular top with ogee moulded edges; on quadruple Doric columnar supports to a cruciform base, with moulded edges, one side inset with a silver maker's plaque hallmarked for Birmingham and inscribed *LINLEY, Limited Edition, 1/50*;

210cm long, 100cm wide, 74cm high

\*£5000-8000

Note: An almost identical table was sold in these rooms, The Autumn Auction, 5th October 2021, lot 1229, with a hammer price of \*£10,500



\* All lots subject to a buyers premium of 25% plus vat @ 20%



438

• François & Sido Thévenin, a pair of *Trône* armchairs 1970s; bronze mounted wrought iron and leather; each with twin ring topped urn finials above confronting cornucopia form crestings; the leather backrests tied with thongs behind and with makers' stamps *F + S*, on openwork strapwork back frames; the leather seats and scrolled armrests also with leather thongs; above arching legs to flat pad feet; 152cm high, 74cm wide

\*£7000 - 10000

Provenance: Chateau de Vouzeron, Upper Loire, Département du Cher, France

Note: Born in 1931 on the French Riviera, Francois Thevenin is seen as a visionary architect and sculptor, and a designer of extraordinary furniture, working primarily in metal and wood since the 1960s.

His creations have been diverse, from chairs to coffee tables, lamps, door handles, and banister railings. -favouring the far more intuitive, sculptural but laborious methods of hand-forging, over casting in metal.

Thevenin worked for much of his career alongside his late wife, Sido, often collaborating on one sheet of metal simultaneously.

• denotes lots affected by Artist's resale rights - refer to conditions of sale.



439

439

• Jacques Adnet (1900-1984), an Art Deco Tantalus; 1930s, with a chromium plated metal frame, mirrored base, and three Baccarat clear and faceted glass decanters with stoppers, etched factory marks; with its key, 35.3cm wide, 20cm high, 22cm deep

\*£800 - 1200



440

An Edwardian silver cased flicker clock or ticket timepiece, the case by Henry Clifford Davis, Birmingham 1904, with a swing handle, the cylindrical case containing ivorene leaves with black numerals, on a waisted base, engraved with the royal cypher for Edward VII beneath a crown, 16cm high with handle raised

\*£250 - 350



440

\* All lots subject to a buyers premium of 25% plus vat @ 20%



441

After Dominique Alonzo (fl. circa 1910-1930), a gilt bronze and ivory mounted figural table lamp, early 20th century; modelled with the standing figure of a boy, wearing a cap and the attire of the period, before a reeded shaft rising to an electrical fitment above; the base modelled as pavement and signed in the maquette; atop a rectangular Italian green serpentine marble socle; 40cm high overall  
Ivory sale exemption licence reference: HELN3MFP

\*£200 - 300

442

A painted plaster mounted figural table lamp in Art Deco style, circa 1930; modelled with a kneeling female nude, inscribed RD.809463 226 to the base; on a rectangular plated metal base on bun feet; with circular opaque glass shade and an electrical fitment; 30cm high, 28cm wide

\*£70 - 100



444



445



446



442



443

A Continental cold painted metal and alabaster mounted figural table lamp, in Art Deco style, circa 1930; the spherical cracked glass shade probably associated; held aloft in the raised hands of a diaphanously draped maiden; on a stepped lozenge form socle; the lamp base 27cm high, the shade (not fitting) 13.5cm high

\*£50 - 80

444

A coloured glass and metal mounted table lamp in Art Nouveau taste, by Art de France, second half 20th century; the ovoid shade and baluster body of mottled brick red glass, the circular base with maker's name; 45cm high

\*£80 - 120

• denotes lots affected by Artist's resale rights - refer to conditions of sale.

445

Elliott, London, a chiming mantel clock, 1930s, the eight-day movement striking the hours and chiming the quarters on four gongs, the square cream dial stamped An Elliott Clock along with the retailer's name Parkhouse & Wyatt, Southampton, the silvered chapter ring with black Roman numerals and trefoil hands, the light oak case with silvered bun feet and a chrome bezel, 22.5cm high, 30cm wide, 12.5cm deep

\*£40 - 60

446

A brass desk lamp, early 20th century; with electrical fitment within an adjustable shade, on a serpentine stem to a domed base; 38cm high

\*£50 - 80

447

A set of four metal and glass wall lights, in Art Deco taste, modern; the opaque disc shades in front of electrical fitments, on rectangular box backplates; 20.5cm high, 19cm wide

\*£60 - 100

448

A chromium plated metal and glass table lamp, modern; with twin electrical fitments beneath an oval and domed opaque glass shade; on an inverted conical stem to a domed base; 43cm wide, 42cm high

\*£40 - 60

449

A pair of Art Deco silver plated cafe au lait pots by Walker & Hall, Sheffield circa 1930, with composition finials and angular handles, 20cm high

\*£40 - 60

450

• Phillipe Starck for Flos, a pair of Ara chrome table lamps; the adjustable horn-shaped lamp mounted on a tapering stem with weighted circular base; 57cm high, with in line transformers

\*£250 - 350

451

A large brushed steel lamp with cylindrical shade, of recent manufacture, by repute retailed by Heal's, the four curved panels flanking a central square rod, with four bulbs, on a disc base, 67cm high

\*£200 - 300



447



448



449



450



451

\* All lots subject to a buyers premium of 25% plus vat @ 20%



452

452

• A 'bronzed' resin bust of a man, believed to be by Elizabeth Studdert ARBS, (b.1935); naturalistically modelled, on a rectangular walnut base; 48cm high overall

\*£100 - 150

453

A patinated bronze model of a kingfisher on a branch, modern; naturalistically portrayed, the shaped base with monogram and inscribed 97, 3/9; 34cm high; and a bronze model of a seated violinist, 20th century, in the manner of Giacometti, the seat inscribed *BURN*, 24cm high

\*£80 - 120

454

20th century school, an abstract sculpture formed from metal engine thermostat covers, the joined elements descending as three uprights to a rough cut stone base, 98cm high

\*£80 - 120



455



456



454

455

A painted wood waiter modelled as a North African, second quarter 20th century; portrayed as standing and wearing a Fez hat, a rectangular tray held before him, on a shaped base; 87cm high, 30cm wide

\*£40 - 60

456

Tony Mann (British, 1927-2013), a Chorus Line automaton, comprising six dancer figures, signed, approximately 33cm long, 19cm wide

\*£100 - 200

457

Vicky Wood (nee Watts) and Tim Wood, untitled, painted wood automaton of a sailing ship with rolling waves, mermaids and fish, label to rear 'Vicky Watts, Tim Wood '82'; 74 x 36cm.

\*£100 - 150



457

• denotes lots affected by Artist's resale rights - refer to conditions of sale.



458

Tony Mann (British, 1927-2013), a Union Jack in a Box automaton, comprising seven moving elements contained within a white painted wooden box, signed and dated '01', overall 60.5cm high, 44.5 cm wide, 11cm deep

\*£1000 - 1500

\* All lots subject to a buyers premium of 25% plus vat @ 20%

# OUR HOME INSURANCE FOCUSES ON THE FINER DETAILS

# Lycetts

Insurance Brokers and Financial Services

[simon.hay@lycetts.co.uk](mailto:simon.hay@lycetts.co.uk)

01392 479 111

[lycetts.co.uk](http://lycetts.co.uk)

Proudly part of the BENEFACT GROUP 

Lycetts is a trading name of Lycett, Browne-Swinburne & Douglass Limited which is authorised and regulated by the Financial Conduct Authority. Lycetts is a trading name of Lycetts Financial Services Limited which is authorised and regulated by the Financial Conduct Authority.





# Information for Buyers at Auctions

**1. Introduction.** The following notes are intended to assist bidders and buyers, particularly those that are inexperienced or new to our salerooms. All of our auctions are governed by our Conditions of Business incorporating the Terms of Consignment (primarily applicable to sellers), the Terms of Sale (primarily applicable to bidders and buyers) and any notices that are displayed in our salerooms or announced by the auctioneer at the auction. Our Conditions of Business are available for inspection at our salerooms and the Terms of Sale are printed in the back of our auction catalogues. Our staff will be happy to help you if there is anything in our Conditions of Business that you do not fully understand.

Please make sure that you read our Terms of Sale set out in this catalogue or on our website carefully before bidding in the auction. If your bid is successful, you will be obliged to comply with our Terms of Sale.

**2. Agency.** As auctioneers we usually act on behalf of the seller whose identity, for reasons of confidentiality, is not normally disclosed. If you buy at auction your contract for the goods is with the seller, not with us as auctioneer.

**3. Estimates.** Estimates are designed to help you gauge what sort of sum might be involved for the purchase of a particular lot. Estimates may change and should not be thought of as the sale price. The lower estimate may represent the reserve price (the minimum price for which a lot may be sold) and will not be below the reserve price. Estimates do not include the buyer's premium or VAT (where chargeable). Estimates are prepared some time before the auction and may be altered by a saleroom notice or announcement by the auctioneer before the auction of the lot. They are not definitive.

**4. Buyer's Premium.** The Conditions of Sale oblige buyers to pay a buyer's premium at 25% + VAT (30%) which shall include VAT on the premium at the rate imposed by law (see below). There is a surcharge for bidding on the internet.

**5. VAT.** Items in our catalogue may be marked in the following ways:

a. A 'dagger' symbol indicates that VAT is payable by the buyer on the hammer price as well as being an element in the buyer's premium. VAT will be chargeable at the standard rate (presently 20%). This imposition of VAT is likely to be because the seller is registered for VAT within the European Union and is not operating the Dealers Margin Scheme or because VAT is due at 20% on importation into the UK.

b. The double 'dagger' indicates that the lot has been imported from outside the European Union. [These lots are liable to a reduced rate of VAT (5%) on the hammer price and buyer's premium].

c. Lots which do not have either of the above symbols have no VAT payable on the hammer price. This is because such lots are sold using the Auctioneers' Margin Scheme. The VAT included within the premium is not recoverable as input tax.

**6. Inspection of goods by the buyer.** As we act on behalf of the seller, we are dependent on information provided by the seller about their goods. We may inspect lots and will act reasonably in taking a general view about them. However, we are normally unable to carry out detailed examinations of lots to check their condition in the way a buyer would do. You will have ample opportunity to inspect the goods. You must inspect and investigate lots that you might wish to bid for. **Please note carefully the exclusion of liability for the condition of lots set out in the Terms of Sale at clause 12.4.**

**7. Electrical goods.** These are sold as "antiques" and for collection and display only. If you buy electrical goods for use you must ask a qualified electrician to check them for compliance with safety regulations before you use them.

**8. Export of goods.** If you intend to export goods you must find out:

- whether an export licence is needed; and
- if there is a prohibition on importing goods of that character e.g. because the goods contain prohibited materials such as ivory.

**9. Bidding.** Bidders will be required to register with us before the auction starts. We reserve the right to impose a deadline prior to the auction by which you must register or by which we must receive a commission bid. If you wish to bid on high value lots this deadline may be several days before the auction in order to allow us sufficient time to carry out the necessary checks. Lots will

be invoiced to the name and address on the registration form. Please enquire in advance about our arrangements for telephone or online bidding. Please note that we may refuse to register you if you do not provide us with all the information and documentation that we ask for or at our discretion.

**10. Financial Checks.** As auctioneers we may have to conduct various checks into our customers under the Money Laundering, Terrorist Financing and Transfer of Funds (Information on the Payer) Regulations 2017 and related legislation. Unless we confirm we already have this information, on registration you will be required to provide the following:

a. For individuals, official photo identification (driving licence, passport or equivalent) and proof of address (if this is not included in your ID document);

b. For corporate entities, the certificate of incorporation (or equivalent) with your official name, registered number (if any) and registered address, as well as details and ID documentation for directors and beneficial owners of the entity;

c. For trusts and estates, details and ID documentation for executors/trustees and details of beneficiaries; please contact us for further information.

You may be asked for further information if we deem this necessary. If you are bidding for another person (your "Principal") you will be required to provide the above information for yourself and your Principal, along with a signed letter from your Principal authorising you to bid.

Further information about ID requirements is available on 01392 413100 or enquiries@bhandl.co.uk if we deem that you have not provided sufficient information for us to complete our anti-money laundering and terrorist financing checks to our satisfaction, we may refuse to register you to bid and we may postpone completion of or cancel any contract made by you and the Seller in the event you have made a successful bid.

**11. Commission bidding.** Commission bids may be left with the auctioneers indicating the maximum amount to be bid against a lot (excluding the buyers' premium and/or any applicable VAT). We will execute commission bids as cheaply as possible having regard to the reserve (if any) and competing bids. If two buyers submit identical commission bids we may prefer the first bid received (where this can be reasonably ascertained). Please enquire in advance about our arrangements for the leaving of commission bids by telephone or email or online bidding platform.

## 12. Methods of Payment

All payments must be made in sterling. The following methods of payment are available:

CHEQUE; STERLING BANK DRAFT; ELECTRONIC BANK TRANSFER IN STERLING; CREDIT CARD (VISA AND ACCESS-MASTERCARD ISSUED IN THE UK ONLY); DEBIT CARDS; CASH (up to a maximum of £1,000); WEBSITE SAGEPAY PAYMENT LINK

If a purchaser is unknown to the auctioneers and is intending to pay by credit or debit card we will require the card holder to attend in person with suitable photographic identification, otherwise payment is required by BACS/CHAPS or electronic bank transfer. As a general rule any cheques tendered will need to be cleared before removal of the goods is permitted.

Cheques and drafts should be made payable to Bearnas Hampton & Littlewood.

**Card payments where the card holder is not present will only be accepted for transactions up to £1,000**

### Clearance Times

All other sterling cheques drawn on UK banks will generally clear on the fifth working day after receipt.

Sterling bank drafts drawn on UK banks can generally be cleared immediately.

Bank transfers clear as soon as our bank receives funds (which does not happen instantaneously after payment instructions are given).

Credit and debit card payments can be cleared immediately, subject to paragraph above.

**13. Collection and storage.** Please note what the Terms of Sale say about collection and storage. It is important that you pay for and collect goods promptly. Any delay may involve you having to pay storage charges.

## Conditions of Sale

Bearnes, Hampton & Littlewood carries on business with bidders, buyers and all those present in the auction room prior to or in connection with a sale on the following General Conditions and on such other terms, conditions and notices as may be referred to herein.

### 1 DEFINITIONS AND INTERPRETATION

1.6 To make these Terms of Sale easier to read, we have given the following words a specific meaning:

“Auctioneer”	means Bearnes Hampton & Littlewood LTD, a partnership or company registered in England and Wales with registration number 3857887 and whose registered office is located at St Edmund’s Court, Okehampton Street, Exeter EX4 1DU or its authorised auctioneer, as appropriate;
“Bidder”	means a person participating in bidding at the auction;
“Buyer”	means the person who makes the highest bid for a Lot accepted by the Auctioneer;
“Deliberate Forgery”	means: (a) an imitation made with the intention of deceiving as to authorship, origin, date, age, period, culture or source; (b) which is described in the catalogue as being the work of a particular creator without qualification; and (c) which at the date of the auction had a value materially less than it would have had if it had been as described;
“Hammer Price”	means the level of the highest bid for a Lot accepted by the Auctioneer by the fall of the hammer;
“Lot(s)”	means the goods that we offer for sale at our auctions;
“Money Laundering Regulations”	means the Money Laundering, Terrorist Financing and Transfer of Funds (Information on the Payer) Regulations 2017, as amended;
“Premium”	means the premium that we will charge you on your purchase of a Lot to be calculated as set out in Clause 4;
“Reserve”	means the minimum hammer price at which a Lot may be sold;
“Sale Proceeds”	means the net amount due to the Seller;
“Seller”	means the persons who consign Lots for sale at our auctions;
“Terms of Consignment”	means the terms on which we agree to offer Lots for sale in our auctions as agent on behalf of Sellers;
“Terms of Sale”	means these terms of sale, as amended or updated from time to time;
“Total Amount Due”	means the Hammer Price for a Lot, the Premium, any applicable artist’s resale right royalty, any VAT due and any additional charges payable by a defaulting buyer under these Terms of Sale;
“Trader”	means a Seller who is acting for purposes relating to that Seller’s trade, business, craft or profession, whether acting personally or through another person acting in the trader’s name or on the trader’s behalf;
“VAT”	means Value Added Tax or any equivalent sales tax; and
“Website”	means our website available at <a href="http://www.bhandl.co.uk">www.bhandl.co.uk</a> .

In these Terms of Sale the words ‘you’, ‘yours’, etc. refer to you as the Buyer. The words ‘we’, ‘us’, etc. refer to the Auctioneer. Any reference to a ‘Clause’ is to a clause of these Terms of Sale unless stated otherwise.

### 2 INFORMATION THAT WE ARE REQUIRED TO GIVE TO CONSUMERS

- 2.1 A description of the main characteristics of each Lot as contained in the auction catalogue.
- 2.2 Our name, address and contact details as set out herein, in our auction catalogues and/or on our Website.
- 2.3 The price of the Goods and arrangements for payment as described in Clauses 4, 6, 8 and 9.
- 2.4 The arrangements for collection of the Goods as set out in Clauses 9 and 10.
- 2.5 Your right to return a Lot and receive a refund if the Lot is a Deliberate Forgery as set out in Clause 14.
- 2.6 We and Trader Sellers have a legal duty to supply any Lots to you in accordance with these Terms of Sale.
- 2.7 If you have any complaints, please send them to us directly at the address set out on our Website.
- 2.8 We also refer you to your warranties as a Bidder and Buyer as set out in clause 6.

### 3 BIDDING PROCEDURES AND THE BUYER

- 3.1 You must register your details with us before bidding and provide us with any requested proof of identity and billing information, in a form acceptable to us (Paragraph [10] of the Information for Buyers in the Sale Catalogue refers). You must also satisfy any security arrangements we have in place before entering the auction room to view or bid.
- 3.2 We strongly recommend that you attend the auction in person if possible. You are responsible for your decision to bid for a particular Lot. If you bid on a Lot, including by telephone and online bidding, or by placing a commission bid, we assume that you have carefully inspected the Lot and satisfied yourself regarding its condition.
- 3.3 If you instruct us in writing, we may execute commission bids on your behalf. Neither we nor our employees or agents will be responsible for any failure to execute your commission bid, unless our failure to do so is unreasonable. Where two or more commission bids at the same level are recorded we have the right to prefer the first bid made (where this can be reasonably ascertained).
- 3.4 The Bidder placing the highest bid for a Lot accepted by the Auctioneer will be the Buyer at the Hammer Price. Any dispute about a bid will be settled at our discretion. We may reoffer the Lot during the auction or may settle the dispute in another way. We will act reasonably when deciding how to settle the dispute.
- 3.5 Bidders will be deemed to act as principals, even if the Bidder is acting as an agent for a third party.
- 3.6 We may bid on Lots on behalf of the Seller up to one bid below the Reserve.
- 3.7 We may refuse to accept any bid if it is reasonable for us to do so.
- 3.8 Bidding increments will be at our sole discretion (but will be in line with standard auction practice).

### 4 THE PURCHASE PRICE

As a buyer you will pay :-

**Buyer’s Premium.** A buyer’s premium at 25% + VAT (30%) which shall include VAT on the premium at the rate imposed by law (see below) with the exception of Books and unframed maps on which no VAT is payable, any artist’s resale right royalty payable on the sale of the Lot; and any VAT due.

## 5 VAT

5.1 You shall be liable for the payment of any VAT applicable on the Hammer Price and premium due for a Lot. Please see the symbols used in the auction catalogue for that Lot and the "Information for Buyers" in our auction catalogue for further information.

5.2 We will charge VAT at the current rate at the date of the auction.

## 6 BUYER WARRANTIES

6.1 You warrant that the funds used for settlement are not connected with any criminal activity including tax evasion, and that you are neither under investigation, nor have you been charged with or convicted of money laundering, terrorist activities or other crimes.

6.2 Where you are bidding on behalf of another person, you warrant that:

6.2.1 You have conducted appropriate customer due diligence on the ultimate buyer(s) of the Lot(s) in accordance with all applicable anti-money laundering and sanctions laws, you consent to us relying on this due diligence, and you will retain for a period of not less than 5 years the documentation evidencing the due diligence;

6.2.2 You will make such documentation promptly available for immediate inspection by an independent third party auditor upon our written request to do so;

6.2.3 The arrangements between you and the ultimate buyer(s) in relation to the Lot or otherwise do not, in whole or in part, facilitate tax crimes;

6.2.4 You do not know, and have no reason to suspect, that the funds used for settlement are connected with, the proceeds of any criminal activity, including tax evasion, or that the ultimate buyer(s) are under investigation, or have been charged with or convicted of money laundering, terrorist activities or other crimes.

## 7 THE CONTRACT BETWEEN YOU AND THE SELLER

7.1 The contract for the purchase of the Lot between you and the Seller will be formed when the hammer falls accepting the highest bid for the Lot at the auction.

7.2 You may directly enforce any terms in the Terms of Consignment against a Seller to the extent that you suffer damages and/or loss as a result of the Seller's breach of the Terms of Consignment.

7.3 If you breach these Terms of Sale, you may be responsible for damages and/or losses suffered by a Seller or us. If we are contacted by a Seller who wishes to bring a claim against you, we may at our discretion and within GDPR Guidelines provide the Seller with information or assistance in relation to that claim.

7.4 We normally act as an agent only and will not have any responsibility for default by you or the Seller (unless we are the Seller of the Lot).

7.5 In addition to any other rights we may have to cancel a contract for sale under these Terms of Sale, in the event:

7.5.1 you are in breach of your warranties in clause 6; or

7.5.2 we have not completed our enquiries pursuant to the Money Laundering Regulations and related legislation to our satisfaction; or

7.5.3 we have reason to believe that the transaction might be unlawful for any reason, or that the sale might put us under any civil or criminal liability,

we may delay completion of a sale, delay release of a Lot or cancel the sale of a Lot.

## 8 PAYMENT

8.1 Immediately following your successful bid on a Lot you will:

8.1.1 give to us, if not already provided to our satisfaction, proof of identity in a form acceptable to us (and any other information that we require in order to comply with our anti-money laundering obligations – please refer to Paragraph [10] of the Information for Buyers in the Sale Catalogue); and

8.1.2 pay to us the Total Amount Due by one of our payment methods.

8.2 If you owe us any money, we may use any payment made by you to repay these debts.

## 9 TITLE AND COLLECTION OF PURCHASES

9.1 While you are bound by the contract for the purchase of the Lot from the fall of the hammer on your successful bid, ownership in the Lot will not pass to you until:

9.1.1 you have paid us in full the Total Amount Due in cleared funds for that Lot;

9.1.2 you have provided us with the information set out in clause 8.1.1; and

9.1.3 we have completed our enquiries pursuant to the Money Laundering Regulations and related legislation.

You may not claim or collect a Lot until you have paid for it and ownership has passed to you.

9.2 Unless notified otherwise, you will (at your own expense) collect any Lots that you have purchased and paid for no later than 5 working days following the day of the auction or upon the clearance of any cheque used for payment.

9.3 If you do not collect the Lot within this time period, you will be responsible for any reasonable removal, storage and insurance charges in relation to that Lot, unless the delay was caused by our continuing investigations under Clause 7.5.2.

9.4 Risk of loss or damage to the Lot will pass to you when you (or your agents) take physical possession of the Lot.

9.5 If you do not collect the Lot that you have paid for within 21 days after the auction, we may sell the Lot. We will pay the proceeds of any such sale to you, but (unless the delay was caused by our continuing investigations under Clause 7.5.2) will deduct any storage charges or other sums that we have incurred in the storage and sale of the Lot. We reserve the right to charge you a selling commission at our standard rates on any such resale of the Lot.

## 10 REMEDIES FOR NON-PAYMENT OR FAILURE TO COLLECT PURCHASES

10.1 Please do not bid on a Lot if you do not intend to buy it. If your bid is successful, these Terms of Sale will apply to you. This means that you will have to carry out your obligations set out in these Terms of Sale. If you do not comply with these Terms of Sale we may (acting on behalf of the Seller and ourselves) pursue one or more of the following measures:

10.1.1 take action against you for damages for breach of contract;

10.1.2 reverse the sale of the Lot to you and/or any other Lots sold by us to you;

10.1.3 resell the Lot by auction or private treaty (in which case you will have to pay any difference between the price you should have paid for the Lot and the price we sell it for as well as the charges outlined in Clause 8.5). Please note that if we sell the Lot for a higher amount than your winning bid, the extra money will belong to the Seller;

10.1.4 remove, store and insure the Lot at your expense;

10.1.5 if you do not pay us within five business days of your successful bid, we may charge interest at a rate not exceeding 1.5% per month on the total amount due; to the extent it remains unpaid for more than 28 days a late payment penalty of £40 will be charged.

10.1.6 keep that Lot or any other Lot sold to you until you pay the Total Amount Due;

10.1.7 reject or ignore bids from you or your agent at future auctions or impose conditions before we accept bids from you; and/or

10.1.8 if we sell any Lots for you, use the money made on these Lots to repay any amount you owe us.

10.2 We will act reasonably when exercising our rights under Clause 9.1. We will contact you before exercising these rights and try to work with you to correct any non-compliance by you with these Terms of Sale.

## 11 HEALTH AND SAFETY

Although we take reasonable precautions regarding health and safety, you are on our premises at your own risk. Please note the lay-out of the premises and security arrangements. Neither we nor our employees or agents are responsible for the safety of you or your property when you visit our premises, unless you suffer any injury to your person or damage to your property as a result of our, our employees' or our agents' negligence.

## 12 SELLER'S WARRANTIES

12.1 The Seller warrants to us and to you that:

12.1.1 the Seller is the true owner of the Lot for sale or is authorised by the true owner to offer and sell the lot at auction;

12.1.2 the Seller is able to transfer good and marketable title to the Lot to you free from any third party rights or claims; and

12.1.3 as far as the Seller is aware, the main characteristics of the Lot set out in the auction catalogue (as amended by any notice displayed in the saleroom or announced by the Auctioneer at the auction) are correct.

12.2 If, after you have placed a successful bid and paid for a Lot, any of the warranties above are found not to be true, please notify us in writing. Neither we nor the Seller will be liable to pay you any sums over and above the Total Amount Due and we will not be responsible for any inaccuracies in the information provided by the Seller except as set out below.

12.3 Please note that many of the Lots that you may bid on at our auction are second-hand.

12.4 If a Lot is not second-hand and you purchase the Lot as a Consumer from a Seller that is a Trader, a number of additional terms may be implied by law in addition to the Seller's warranties set out at Clause 12.1 (in particular under the Consumer Rights Act 2015). These Terms of Sale do not seek to exclude your rights under law as they relate to the sale of these Lots.

12.5 Save as expressly set out above, all other warranties, conditions or other terms which might have effect between the Seller and you, or us and you, or be implied or incorporated by statute, common law or otherwise are excluded.

## 13 DESCRIPTIONS AND CONDITION

13.1 Our descriptions of the Lot will be based on: (a) information provided to us by the Seller of the Lot (for which we are not liable); and (ii) our opinion (although it is likely that we will not be able to carry out a detailed inspection of each Lot).

13.2 We will give you a number of opportunities to view and inspect the Lots before the auction. You (and any independent consultants acting on your behalf) must satisfy yourself about the accuracy of any description of a Lot. We shall not be responsible for any failure by you or your consultants to properly inspect a Lot.

13.3 Representations or statements by us as to authorship, genuineness, origin, date, age, provenance, condition or estimated selling price involve matters of opinion. We undertake that any such opinion will be honestly and reasonably held and accept liability for opinions given negligently or fraudulently.

13.4 Please note that Lots (in particular second-hand Lots) are unlikely to be in perfect condition. Lots are sold "as is" (i.e. as you see them at the time of the auction). Neither we nor the Seller accept any liability for the condition of second-hand Lots or for any condition issues affecting a Lot if such issues are included in the description of a Lot in the auction catalogue (or in any saleroom notice) and/ or which the inspection of a Lot by the Buyer ought to have revealed.

## 14 DELIBERATE FORGERIES

14.1 You may return any Lot which is found to be a Deliberate Forgery to us within 21 days of the auction provided that

you return the Lot to us in the same condition as when it was released to you, accompanied by a written statement identifying the Lot from the relevant catalogue description and a written statement of defects.

14.2 If we are reasonably satisfied that the Lot is a Deliberate Forgery we will refund the money paid by you for the Lot (including any Premium and applicable VAT) PROVIDED that if:

14.2.1 the catalogue description reflected the accepted view of experts as at the date of the auction; or

14.2.2 you personally are not able to transfer good and marketable title in the Lot to us;

you will have no right to a refund under this Clause 13.2.

14.3 If you have sold the Lot to another person, we will only be liable to refund the price that you paid for the Lot. We will not be responsible for repaying any additional money you may have made from selling the Lot.

14.4 Your right to return a Lot that is a Deliberate Forgery does not affect your legal rights and is in addition to any other right or remedy provided by law or by these Terms of Sale.

## 15 OUR LIABILITY TO YOU

15.1 We will not be liable for any loss of opportunity or disappointment suffered as a result of participating in our auction.

15.2 In addition to the above, neither we nor the Seller shall be responsible to you and you shall not be responsible to the Seller or us for any other loss or damage that any of us suffer that is not a foreseeable result of any of us not complying with the Conditions of Business. Loss or damage is foreseeable if it is obvious that it will happen or if at the time of the sale of the Lot, we, you and the Seller knew it might happen.

15.3 Subject to Clause 14.4, if we are found to be liable to you for any reason (including, amongst others, if we are found to be negligent, in breach of contract or to have made a misrepresentation), our liability will be limited to the total purchase price paid by you to us for any Lot.

15.4 Notwithstanding the above, nothing in these Terms of Sale shall limit our liability (or that of our employees or agents) for:

15.4.1 death or personal injury resulting from negligence (as defined in the Unfair Contract Terms Act 1977);

15.4.2 fraudulent misrepresentation; or

15.4.3 any liability which cannot be excluded by law.

## 16 NOTICES

16.1 All notices between you and us regarding these Terms of Sale must be in writing and signed by or on behalf of the party giving it.

16.2 Any notice referred in Clause 15.1 may be given:

16.2.1 by delivering it by hand;

16.2.2 by first class pre-paid post or Recorded Delivery; or

16.2.3 by email, provided that a copy is also sent by pre-paid post or Recorded Delivery.

16.3 Notices must be sent:

16.3.1 by hand or registered post:

a. to us, at our address set out in these Terms of Sale or at our registered office address appearing on our Website; and

b. to you, at the last postal address that you have given to us as your contact address in writing; or

16.3.2 by email:

a. to us, by sending the notice to the following email address: enquiries@bhandl.co.uk

b. to you, by sending the notice to any email address that you have given to us as your contact email address in writing.

16.4 Notices will be deemed to have been received:

16.4.1 if delivered by hand, on the day of delivery;

16.4.2 if sent by first class pre-paid post or Recorded Delivery, two business days after posting, exclusive of the day of posting; or

16.4.3 if sent by email, at the time of transmission unless sent after 17.00 in the place of receipt in which case they will be deemed to have been received on the next business day in the place of receipt (provided that a copy has also been sent by pre-paid post or Recorded Delivery as set out in Clause 15.2.3.

16.5 Any notice or communication given under these Terms of Sale will not be validly given if sent by email, any form of messaging via social media or text message.

## 17 DATA PROTECTION

We will hold and process any personal data in relation to you in accordance with our current privacy policy, a copy of which is available on [www.bhandl.co.uk/privacy](http://www.bhandl.co.uk/privacy).

## 18 GENERAL

18.1 We may, acting reasonably, refuse admission to our premises or attendance at our auctions by any person.

18.2 We act as an agent for our Sellers. The rights we have to claim against you for breach of these Terms of Sale may be used by either us, our employees or agents, or the Seller, its employees or agents, as appropriate. Other than as set out in this Clause, these Terms of Sale are between you and us and no other person will have any rights to enforce any of these Terms of Sale.

18.3 We may use special terms in the catalogue descriptions of particular Lots. You must read these terms carefully along with any glossary provided in our auction catalogues.

18.4 Each of the clauses of these Terms of Sale operates separately. If any court or relevant authority decides that any of them are unlawful, the remaining clauses will remain in full force and effect.

18.5 We may change these Terms of Sale from time to time, without notice to you. Please read these Terms of Sale carefully, as they may be different from the last time you read them.

18.6 Except as otherwise stated in these Terms of Sale, each of our rights and remedies are: (a) are in addition to and not exclusive of any other rights or remedies under these Terms of Sale or general law; and (b) may be waived only in writing and specifically. Delay in exercising or non-exercise of any right under these Terms of Sale is not a waiver of that or any other right. Partial exercise of any right under these Terms of Sale will not preclude any further or other exercise of that right or any other right under these Terms of Sale. Waiver of a breach of any term of these Terms of Sale will not operate as a waiver of breach of any other term or any subsequent breach of that term.

18.7 These Terms of Sale and any dispute or claim arising out of or in connection with them (including any non-contractual claims or disputes) shall be governed by and construed in accordance with the laws of England and the parties irrevocably submit to the exclusive jurisdiction of the English courts.

Based on recommended terms of sale by the Society of Fine Art Auctioneers & Valuers.

## Glossary of cataloguing terms

Any statement as to authorship, origin, date, age, provenance and condition is a statement of opinion and is not to be taken as a statement of representation of fact.

- SIDNEY RICHARD PERCY** – In our opinion a work by the artist. (When the artist's forename(s) is not known, a series of asterisks, followed by the surname of the artist, whether preceded by an initial or not, indicates that in our opinion the work is by the artist named.)
- ATTRIBUTED TO SIDNEY RICHARD PERCY** – In our opinion probably a work by the artist but less certainty as to authorship is expressed than in the preceding category.
- STUDIO OF SIDNEY RICHARD PERCY** – In our opinion a work by an unknown hand in the studio of the artist which may or may not have been executed by under the artist's direction.
- CIRCLE OF SIDNEY RICHARD PERCY** – In our opinion a work by an as yet unidentified but distinct hand – closely associated with the named artist but not necessarily his pupil.
- STYLE OF . . . ; FOLLOWER OF SIDNEY RICHARD PERCY** – In our opinion a work by a painter working in the artist's style, contemporary or nearly contemporary, but not necessarily his pupil.
- MANNER OF SIDNEY RICHARD PERCY** – In our opinion a work in the style of the artist and of a later date.
- AFTER SIDNEY RICHARD PERCY** – In our opinion a copy of a known work of the artist.
- The term signed and/or dated and/or inscribed means that in our opinion the signature and/or date and/or inscription are from the hand of the artist.
- The term bears a signature and/or date and/or inscription means that in our opinion the signature and/or date and/or inscription have been added by another hand.
- Dimensions are given height before width.

## Artist's resale right ("droit de suite")

If a lot is affected by this right it will be identified by the symbol "•" next to the lot number. The buyer agrees to pay Bearnas Hampton & Littlewood an amount equal to the resale royalty and we will pay such amount to the artist's collecting agent. Resale royalty applies where the hammer price is 1,000 Euro or more and the amount cannot be more than 12,500 Euro per lot. The amount is calculated as follows:

Royalty for the portion of the Hammer Price (in Euro)
4.00% up to 50,000
3.00% between 50,000.1 and 200,000
1.00% between 200,000.01 and 350,000
0.50% between 350,000.01 and 500,000
00.25% in excess of 500,000

Invoices will, as usual, be issued in Pounds Sterling. For the purposes of calculating the resale royalty the Pounds Sterling/Euro ratio rate of exchange will be European Central Bank reference rate on the day of the sale.

## Post 1950 Upholstered Furniture

All items of furniture included in this sale are offered for sale as works of art. The items may not comply with the Furniture and Furnishings (Fire) Safety Regulations 1988 and for this reason, they should not be used in a private dwelling.

## CITES Regulations

Furniture made of Brazilian Rosewood (*Dalbergia Negra*). To comply with CITES Regulations on Post-1947 furniture made of Brazilian Rosewood, all post-war rosewood furniture items have Article 10 certificates.

If you are purchasing rosewood furniture for commercial purposes and not solely for your own use, CITES regulations require you to obtain your own certificate. You would need to contact the Animal Health and Veterinary Laboratories Agency ('AHVLA') and, as part of the process of obtaining your document, it is a requirement that you have seen sight of the Bearnas Hampton & Littlewood certificate or are aware of its reference number.

It is therefore the responsibility of commercial buyers to ensure that they obtain a copy of the appropriate certificate, or the certificate reference number, after purchase from Bearnas Hampton & Littlewood Fine Art Auctioneers. Items are clearly marked with their certificate number where appropriate.

## Wrapping, Packing and Despatch

*We do not undertake postage and packing or recommend anyone who may undertake this on your behalf. However, here are some useful numbers of companies that will be able to assist.*

**Mailboxes etc** info@mbeplymouth.co.uk 01752 257224

**Auction Postal Services**  
(excluding furniture) sales@apservices.info 07736 544362

**Postit4 me** enquiries@postit4me.com 01258 920180

Or

**Martin Bros. Removals Ltd.** orders@martinbrosLtd.com 01985 844144  
(Carriers for larger items, furniture etc)

The Old Sawmills,  
The Street, Kilmington,  
Warminster,  
Wiltshire, BA12 6RG

**Alban Shipping** info@albanshipping.co.uk 01582 493099

Unit 4,  
Premier Business Park,  
Dencora Way,  
Luton LU3 3HP.  
[www.albanshipping.co.uk](http://www.albanshipping.co.uk)

## FORTHCOMING SALE DATES

27th February  
**Silver and Jewellery Auction**

19th & 20th March  
**Sporting & Collectors Auction**

16th & 17th April  
**The Spring Auction**

14th May  
**Antiquarian Book Auction**

4th June  
**Silver & Jewellery Auction**

18th June  
**Maritime Auction**

16th & 17th July  
**The Summer Auction**

13th & 14th August  
**Sporting & Collectors Auction**

3rd September  
**Silver & Jewellery Auction**

17th September  
**20th Century & Contemporary  
Auction**

**IMPORTANT:**

Please note this list is printed only as a guide and clients are requested to contact Bearnes, Hampton & Littlewood for confirmation of sale dates and special advisory days.

Catalogue production by  
Acanthus Press Ltd  
[www.acanthuspress.ltd.uk](http://www.acanthuspress.ltd.uk)  
01823 663339

