

ONLINE AUCTION

Lonza

Surplus to the Ongoing Operations of
Lonza Biologics, Phase 1 - Assets from
Hayward, CA & Portsmouth, NH Facilities



GE HEALTHCARE / CYTIVA AKTAPROCESS CHROMATOGRAPHY SKID



GE HEALTHCARE / CYTIVA AKTA READY XL CHROMATOGRAPHY SYSTEM

SALE CLOSING

Wednesday, March 27, at 10 AM PT

SALE LOCATION

1978 W Winton Ave.
Hayward, CA 94545

INSPECTION

Tuesday, March 26, from 9 AM
to 4 PM PT, by appointment only

**PRE-AUCTION
OFFERS INVITED
ON MAJOR ASSETS**

COMPLETE CATALOG & INFORMATION:
<https://perfection.global/lonza-hayward>

Bidding Available Through

BidSpotter

FEATURING: GE/CYTIVA AKTA process, AKTA ready & AKTA avant Chromatography Systems (As New As 2019), Chromatography Columns, AGILENT HPLC Stacks, *NEW* and Used SARTORIUS & THERMO SCIENTIFIC Single Use Bioreactors, Bioreactor Controllers, 2021 ZIRBUS LabStar 200 Benchtop Autoclave, 2021 APPLIED BIOSYSTEMS 7500 Fast PCR System, Large Selection of Biopharmaceutical & Lab Equipment, Quattroflow & Peristaltic Pumps, Support Equipment, and more



STERIS 1024 GLASSWARE DRYER



Perfection Industrial Sales

ph +1-847-545-6374 • fax +1-847-427-8884 • www.perfectionindustrial.com

AUTOCLAVE, BIOREACTORS

AUTOCLAVE

2021 ZIRBUS LABSTAR 200 AUTOCLAVE, s/n 5242, 284°F Max Temp

BIOREACTORS

***NEW IN CRATE* SARTORIUS 2000L SINGLE USE BIOREACTOR**, Cooling Water Capacity: 1.5 m³/h; Cooling Water Return: 1.5 m³/h, Instrument Air: 25 slpm; Process Air: 200 slpm; Oxygen: 100 slpm; Carbon Dioxide: 30 slpm; Nitrogen: 20 slpm; Max. Power Consumption: 16kW; TN-S / 3x230/400VAC / 50Hz: 3L+N+PE CEE Plug, 63A, 6H (Brand New Equipment, Located in Germany)

***NEW IN CRATE* SARTORIUS 1000L SINGLE USE BIOREACTOR**, Cooling Water Capacity: 1.0 m³/h; Cooling Water Return: 1.0 m³/h, Instrument Air: 25 slpm; Process Air: 100 slpm; Oxygen: 50 slpm; Carbon Dioxide: 15 slpm; Nitrogen: 10 slpm; Max. Power Consumption: 9kW; TN-S / 3x230/400VAC / 50Hz: 3L+N+PE CEE Plug, 32A, 6H (Brand New Equipment, Located in Germany)

2019 THERMO SCIENTIFIC HYPERFORMA 250L SINGLE USE BIOREACTOR LINE, s/n ADIT04S, w/ 2014 APPLIKON V6LZZ91101 Control, s/n P510262/2, LAUDA T 46000 Process Thermostat, s/n LPW305-14-0002, UPS

2013 THERMO SCIENTIFIC 50L SINGLE USE BIOREACTOR, s/n H13247-01

(2) SARTORIUS BIostat CULTIBAG RM ROCKER BIOREACTOR, s/n NA

SARTORIUS BIostat RM II 20/50 BIOREACTOR WAVE ROCKER SYSTEM, w/ RM Rocker, DZ050L-R2LC Load Cell Monitor, DZ050L-R2BH Bag Holder 50 RM, (NEW IN BOX)

SARTORIUS BIostat CULTIBAG RM 20/50 WAVE BIOREACTOR HEATER PLATE, s/n 10018.0207.20/50HP

2014 APPLIKON V6LZZ91141 BIOREACTOR CONTROL, s/n P007313/1, w/ Allen Bradley Panelview Plus 1500 PLC

(3) 2014 APPLIKON BIOTECHNOLOGY Z310110011 AUTOCLAVABLE BIOREACTOR, s/n P140076/74, P140076/69, P140076/74

METTLER TOLEDO 0958 1,000L SINGLE-USE BIOREACTOR, s/n 1146160-1KH

(6) APPLIKON 15L TO 2L BIOREACTORS

THERMO SCIENTIFIC G3PRO BIOPROCESS CONTROLLER



ZIRBUS LABSTAR 200 AUTOCLAVE



2000L NEW IN CRATE SARTORIUS BIOREACTOR



1000L NEW IN CRATE SARTORIUS BIOREACTOR



THERMO SCIENTIFIC HYPERFORMA 250L SINGLE USE BIOREACTOR LINE



THERMO SCIENTIFIC HYPERFORMA 250L SINGLE USE BIOREACTOR LINE



APPLIKON V6LZZ91141 BIOREACTOR CONTROL

BIOREACTORS, HPLC



2013

THERMO SCIENTIFIC 50L SINGLE USE BIOREACTOR



3 AVAILABLE

APPLIKON BIOTECHNOLOGY Z310110011 AUTOCLAVABLE BIOREACTOR



2014

APPLIKON BIOTECHNOLOGY Z310110011 AUTOCLAVABLE BIOREACTOR



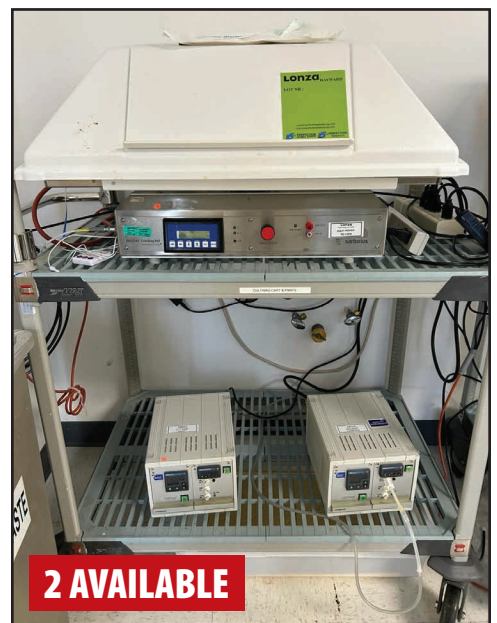
15L

APPLIKON 15L BIOREACTOR



5 AVAILABLE

APPLIKON 2L BIOREACTOR



2 AVAILABLE

SARTORIUS BIOSTAT CULTIBAG RM ROCKER BIOREACTOR

HPLC

AGILENT TECHNOLOGIES 1260 INFINITY II HPLC STACK, w/ G1311B Pump, G7167A Multisampler, G7167-60005 Sample Cooler, G1316C 1290 Infinity TCC, G1315D DAD Detector

AGILENT TECHNOLOGIES 1200 SERIES HPLC STACK, w/ G1365B MWD Detector, G1321A Fluorescence Detector, G1330B ALS Therm, G1329A Autosampler

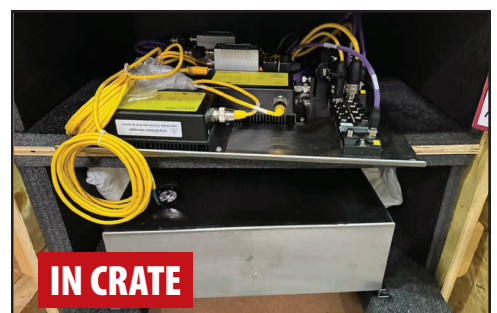
AGILENT TECHNOLOGIES 1200 SERIES HPLC STACK, w/ G1379B Degasser, G1311A Quat Pump



AGILENT TECHNOLOGIES 1260 INFINITY II HPLC SYSTEM



AGILENT TECHNOLOGIES 1200 SERIES HPLC SYSTEM



IN CRATE

THERMO SCIENTIFIC G3PRO BIOPROCESS CONTROLLER



NEW IN BOX

SARTORIUS BIOSTAT RM II 20/50 BIOREACTOR WAVE ROCKER SYSTEM

CHROMATOGRAPHY / FILTRATION

CHROMATOGRAPHY / FILTRATION

2019 GE HEALTHCARE / CYTIVA AKTA READY XL CHROMATOGRAPHY SYSTEM, s/n 29414662, w/ AKTA Ready XL Gradient Section Spare in Crate

2013 GE HEALTHCARE AKTA READY CHROMATOGRAPHY SYSTEM, s/n 1750811

2012 GE HEALTHCARE / CYTIVA AKTA PROCESS CHROMATOGRAPHY SKID, s/n 2968, 1" Tubing (Location: Portsmouth, NH)

(4) 2012 GE HEALTHCARE / CYTIVA AKTA PROCESS CHROMATOGRAPHY SKIDS, s/n 2970, 2971, 2973, (1) 1" Tubing, (4) 0.5" Tubing (Location: Portsmouth, NH)

2014 GE HEALTHCARE AKTA AVANT CHROMATOGRAPHY SYSTEM, s/n 1800457

AGILENT 7890B GAS CHROMATOGRAPHY SYSTEM, s/n US20103009

(1) 2012 GE HEALTHCARE AXICHROM 600/500 CHROMATOGRAPHY COLUMNS, s/n 29010579 (Location: Portsmouth, NH)

(3) 2012 GE HEALTHCARE AXICHROM 450/500 CHROMATOGRAPHY COLUMNS, s/n 29010574, 29010575, 29010576 (Location: Portsmouth, NH)

(3) CYTIVA BPG 300/500 CHROMATOGRAPHY COLUMNS

(2) CYTIVA BPG 200/500 CHROMATOGRAPHY COLUMNS

(5) CYTIVA BPG 140/500 CHROMATOGRAPHY COLUMNS, w/ Bubble Trap

2019 PALL ULTRAFILTRATION SYSTEM, s/n 05.000842, w/ Control

MILLIPORE ULTRAFILTRATION SYSTEM, s/n NA (Location: Portsmouth, NH)

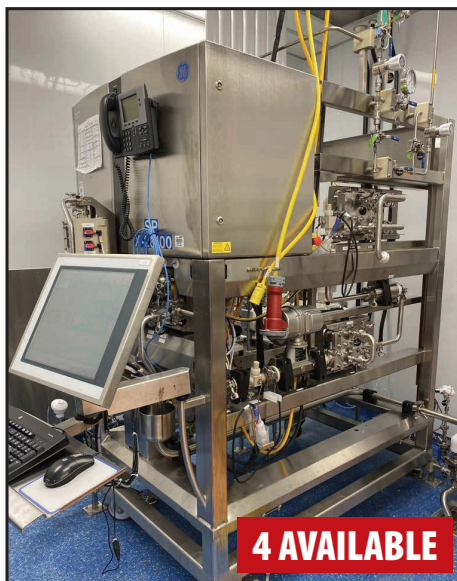
2013 BIOPHARM ULTRAFILTRATION SYSTEM, s/n NA (Location: Portsmouth, NH)

(4) 3M ZETA PLUS 16E ZB ENCAPSULATED SYSTEM FILTER HOLDERS, As New as 2018, s/n ZP182294, NA, 104°F Max Operating Temp

ALSO: MILLIPORE Filter Holder, s/n MP0DSYS3A, Max Hydraulic Pressure 1100 PSI, Preload: 1800 PSI During Operation; PALL Ultrafiltration Holder, s/n NA; 3M ENCAPSULATED SYSTEM HOLDER, s/n NA; PALL CORP Ultrafiltration Filter Holder, w/ SSHP-36 Pump; SARTORIUS STEDIM Ultrafiltration Filter Holder; 2018 PALL Flowstar IV Filter Integrity Tester, s/n 25477744; TURCK PSU67-11-24801M Filter Integrity Tester, s/n 6884147



GE HEALTHCARE / CYTIVA AKTA READY XL CHROMATOGRAPHY SYSTEM



GE HEALTHCARE / CYTIVA AKTAPROCESS CHROMATOGRAPHY SKID



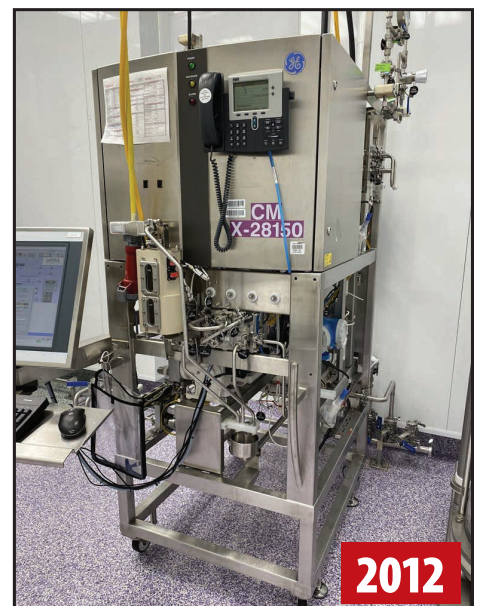
GE AKTA PROCESS 0.5 INCH SKID 74C



GE HEALTHCARE AKTA READY CHROMATOGRAPHY SYSTEM

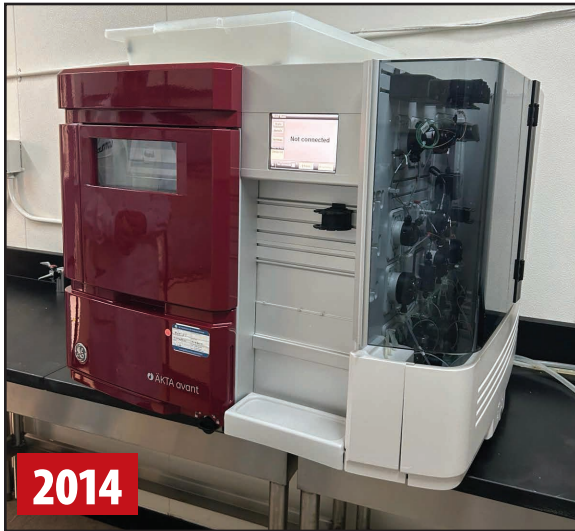


GE AKTA PROCESS 0.5 INCH SKID 74B



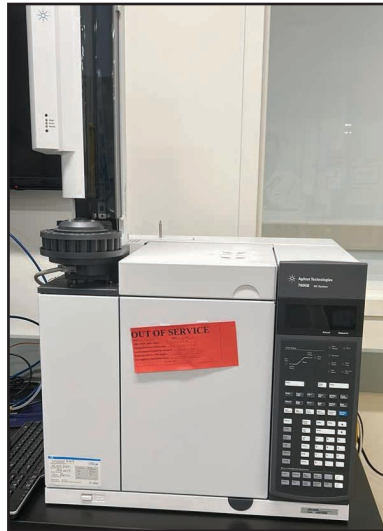
GE HEALTHCARE / CYTIVA AKTAPROCESS CHROMATOGRAPHY SKID

CHROMATOGRAPHY / FILTRATION



2014

GE AKTA AVANT CHROMATOGRAPHY SYSTEM



AGILENT 7890B GAS CHROMATOGRAPHY SYSTEM



2019

PALL ULTRAFILTRATION SYSTEM

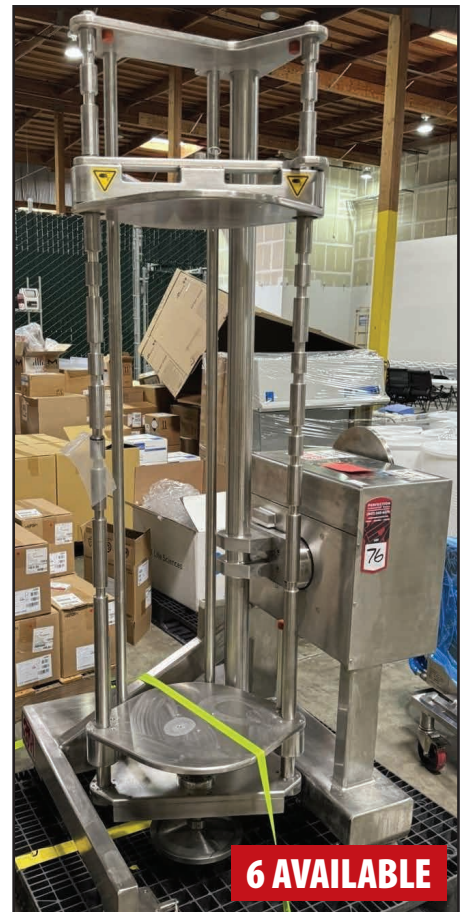


MILLIPORE ULTRAFILTRATION SYSTEM



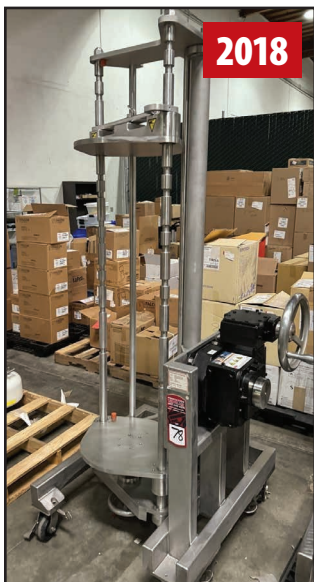
2013

BIOPHARM ULTRAFILTRATION SYSTEM



6 AVAILABLE

3M ZETA PLUS 16E ZB ENCAPSULATED SYSTEM FILTER HOLDER



2018

3M ZETA PLUS 16E ZB ENCAPSULATED SYSTEM FILTER HOLDER



2018

PALL FLOWSTAR IV FILTER INTEGRITY TESTER



MILLIPORE FILTER HOLDER

For auction inquiries, please contact Jennifer Reiner at (847) 545-6374 or jennifer@perfectionindustrial.com

CHROMATOGRAPHY / FILTRATION, MOBILE VESSELS



2 AVAILABLE

CYTIVA BPG 200/500 CHROMATOGRAPHY COLUMN



PALL CORP ULTRAFILTRATION FILTER HOLDER



3 AVAILABLE

GE HEALTHCARE AXICHROM 600/500 CHROMATOGRAPHY COLUMN



3 AVAILABLE

GE HEALTHCARE AXICHROM 450/500 CHROMATOGRAPHY COLUMN



3 AVAILABLE

CYTIVA BPG 300/500 CHROMATOGRAPHY COLUMN



5 AVAILABLE

CYTIVA BPG 140/500 CHROMATOGRAPHY COLUMN

MOBILE VESSELS (LOCATION: PORTSMOUTH, NH)

(5) 2012 FELDMEIER 200L MOBILE VESSEL W/ AGITATOR, (2) Units Are Jacketed (LOCATION: PORTSMOUTH, NH)

(2) FELDMEIER 150L SLURRY TANKS, s/n S063512, S063612 (LOCATION: PORTSMOUTH, NH)

(22) 2018-2012 FELDMEIER 100L MOBILE VESSEL W/ AGITATOR, (4) Units Are Jacketed (LOCATION: PORTSMOUTH, NH)

(82) SFI & ABEC 60L MOBILE VESSEL (LOCATION: PORTSMOUTH, NH)

(8) SFI 25L MOBILE VESSELS (LOCATION: PORTSMOUTH, NH)



VIEW OF MOBILE VESSELS



PRECISION STAINLESS 400L MOBILE VESSEL



5 AVAILABLE

FELDMEIER 200L JACKETED MOBILE VESSEL W/ AGITATOR



23 AVAILABLE

FELDMEIER 100L MOBILE VESSEL W/ AGITATOR



70+ AVAILABLE

SFI 60L MOBILE VESSEL



2012

SFI 60L MOBILE VESSEL

LAB & SUPPORT EQUIPMENT

LAB & SUPPORT EQUIPMENT

2019 SINGLE USE SUPPORT UNISTAT FTLS_1001 PLATE FREEZER, s/n P1173, w/ HUBER Unistat 915w Chiller, -90°C, s/n 363987, w/ Tray Loader

(2) SARTORIUS STEDIM BIOTECH BIOWELDER TC STERILE TUBE WELDERS, s/n BWTC 2894

2022 STERIS 1024 LABORATORY GLASSWARE DRYER, s/n 3601022014;

2021 APPLIED BIOSYSTEMS 7500 FAST PCR SYSTEM, s/n 2750109811

SIEMENS HEALTHINEERS RAPID POINT 500E BLOOD GAS SYSTEM, s/n 1616491411, w/ Automatic QC Cartridge

INNOVATIS CEDEX HIRES CELL CULTURE ANALYZER, s/n G037D9004

PERKIN ELMER LABCHIP GX II TOUCH HT AUTOMATED BIOANALYSIS SYSTEM, s/n GT1447N0082

SCIEX PA 800 PLUS PHARMACEUTICAL ANALYSIS SYSTEM, s/n NA

2018 PHYNEXUS INC MEA PROTEIN PURIFICATION SYSTEM, s/n 121801ME2, w/ RAININ E4 XLS Electronic Pipette and HP Laptop

PROTEINSIMPLE ICE3 PROTEIN ANALYZER, s/n JW 1411

THERMO SCIENTIFIC IS20 SPECTROMETER, s/n NA

ADVANCED INSTRUMENTS OSMOTECH MICRO-OSMOMETER (NEW IN BOX)

METTLER TOLEDO MP90 MELTING POINT SYSTEM, s/n 30578105 (New In Box)

INNOVATIS CEDEX HIRES CELL CULTURE ANALYZER, s/n G037D9004

(2) SIEVERS 900 LABORATORY TOC ANALYZERS, s/n 09083338, 09073334

CARON 6540-2 PHOTOSTABILITY CHAMBER, s/n 120909-6540-2-20

ALSO: (20) THERMO SCIENTIFIC, REVCO, BIOCOLD, LAB-LINE, VWR Lab Freezers & Refrigerators; (4) Incubators; Recirculating Coolers & Chillers; (2) ATMI DU005-US Magnetic Mixers; (4) 2020 SARTORIUS STEDIM FXA122380 STD PT Cubical Accessory 650L Draining Systems, s/n HU6963/20, HU6964/20, HU6966/20, HU6967/20; BECKMAN COULTER Proteomelab PA 800 Protein Characterization System, s/n 3062022; VWR 89202-978 Refrigerated Circulating Bath, s/n 2103-01150; Circulating Bath w/ VWR 1166D Digital Temp Controller; EPPENDORF Centrifuge 5702, s/n 5702 05675; BECKMAN COULTER Allegra X-14R Centrifuge, s/n ALF12L16; SUPERTEK CH12040S UV Cabinet, s/n 202201; HUNTER LAB UltraScan VIS Spectrophotometer, s/n NA; THERMO SCIENTIFIC Nanodrop 2000C Spectrophotometer, s/n K041; (2) MOLECULAR DEVICES Spectra Max 384 Plus Microplate Spectrophotometers, s/n MN04469, NA; 2016 ELGA PURELAB Ultra DV35 Water Purification System w/ 2009 ELGA PURELAB Prima LA620 Tank; GE Autosampler, s/n 15120530; VWR Shakers, (2) VWR VM-3000 Mini Vortexers, s/n 21289, 24876; (2) NIKON Labophot Benchtop Microscopes, VISTA Vision 10X Benchtop Microscope, LABCONCO 325002033273 HORIZONTAL CLEAN BENCH, s/n 230854517, w/ Base; 2022 THERMO SCIENTIFIC DHX HEAT EXCHANGER, s/n H22344-01; Process Tank Controls and More!



2 AVAILABLE

SARTORIUS STEDIM BIOTECH BIOWELDER TC STERILE TUBE WELDER



2021

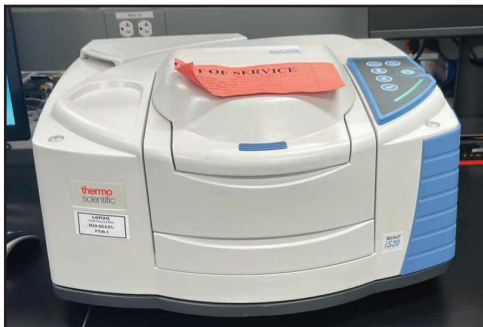
APPLIED BIOSYSTEMS 7500 FAST PCR SYSTEM



CARON 6540-2 PHOTOSTABILITY CHAMBER



SIEMENS HEALTHINEERS RAPID POINT 500E BLOOD GAS SYSTEM



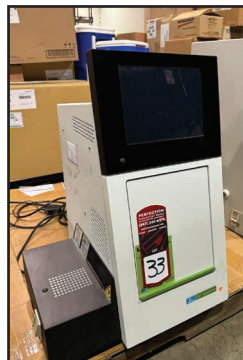
THERMO SCIENTIFIC IS20 SPECTROMETER



HUNTER LAB ULTRASCAN VIS SPECTROPHOTOMETER



ADVANCED INSTRUMENTS OSMOTECH MICRO-OSMOMETER



PERKIN ELMER LABCHIP GX II TOUCH HT AUTOMATED BIOANALYSIS SYSTEM



PROTEINSIMPLE ICE3 PROTEIN ANALYZER



INNOVATIS CEDEX HIRES CELL CULTURE ANALYZER



SCIEX PA 800 PLUS ANALYSIS SYSTEM

LAB & SUPPORT EQUIPMENT, PUMPS & MOTORS, SCALES



SINGLE USE SUPPORT UNISTAT FTLS 1001 PLATE FREEZER



VWR GDM-49-SCI-HC-TSL01 LAB REFRIGERATOR



STERIS 1024 LABORATORY GLASSWARE DRYER



THERMO SCIENTIFIC REVCO ULTIMA PLUS LAB FREEZER

PUMPS & MOTORS

(2) ALMATEC QUATTROFLOW 440-HT MULTI-USE QUATERNARY DIAPHRAGM PUMP, s/n 884968, NA, 4-Piston, Eccentric Shaft

(4) WATSON MARLOW QUANTUM 600 UNIVERSAL BIOPROCESSING PUMP, s/n 210809-201295

2021 QUATRO FLOW PUMP, s/n 952300

ALMATEC QUATTRO FLOW PUMP, s/n NA

WATSON MARLOW 630U N-MODULE STANDARD NEMA 4X 1P66 PERISTALTIC PUMP, s/n NA, (NEW IN BOX)

WATSON MARLOW 630U PERISTALTIC PUMP, s/n NA

(2) WATSON MARLOW 620S PERISTALTIC PUMP, s/n NA

(3) WATSON MARLOW 620U 620N WATERTIGHT-MODULE STANDARD NEMA 4X IP66 PERISTALTIC PUMP, s/n NA

(6) WATSON MARLOW 520U PERISTALTIC PUMPS, s/n NA

ALSO: WATSON MARLOW 504U MK2 Peristaltic Pump, s/n NA; GOULD 3196 Pump, s/n 785E652, Size 3X4-8; WEG 5 HP Electric Motor, s/n NA; (2) BALDOR 5 HP Super E Motor, s/n F1108234239, F1108234449; YORK 2 HP Electric Motor, s/n F1206043856; (2) BALDOR RELIANCE 1 HP Super E Washdown Duty Motor, s/n F1302223417, F1302223467; MECO GII-A 40 HP Compressor, s/n 526941NR



ALMATEC QUATTROFLOW 440-HT MULTI-USE QUATERNARY DIAPHRAGM PUMP



ALMATEC QUATTROFLOW 440-HT MULTI-USE QUATERNARY DIAPHRAGM PUMP



WATSON MARLOW QUANTUM 600 UNIVERSAL BIOPROCESSING PUMP



WATSON MARLOW QUANTUM 600 UNIV BIOPROCESSING PUMP



WATSON MARLOW 630U PERISTALTIC PUMP



WATSON MARLOW 620U 620N PERISTALTIC PUMP



WATSON MARLOW 520U PERISTALTIC PUMP



QUATTRO FLOW PUMP

SCALES

(2) 2019 RAVAS PROLINE TOUCH 1000 KG WEIGH HAND PALLET TRUCK SCALE, s/n 21901543.191201, 21901543.191202

(3) MINEBEA INTEC IF DRIVE-THROUGH SCALES, (NEW IN CRATE)

(5) SARTORIUS CUBIS MCE36201S BENCHTOP SCALES, (NEW IN BOX)

SARTORIUS MSE36201S-000-D0 BENCHTOP SCALE, s/n 31901678

SARTORIUS MSE36201S-000-D0 BENCHTOP DIGITAL SCALE, s/n 31401166

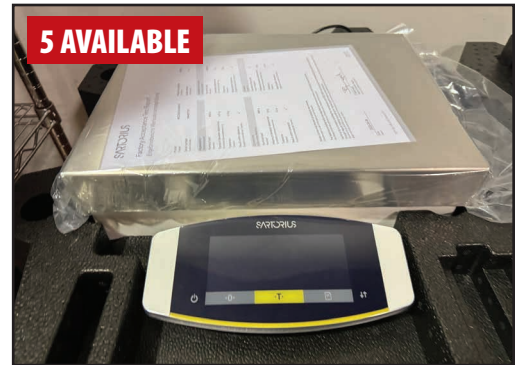
OHAUS CHAMP CW-11 DIGITAL BENCHTOP SCALE, s/n 0073603-6KH, 5000 LB Max

VWR 64B LABORATORY ANALYTICAL BALANCE, s/n 05262015008

METTLER TOLEDO NEW CLASSIC MF ML4002E PRECISION BALANCE, s/n B244471926

METTLER TOLEDO IND570 WEIGHING TERMINAL, s/n B849874620

SARTORIUS DIGITAL BENCHTOP SCALE, s/n NA



SARTORIUS CUBIS MCE36201S BENCHTOP SCALES, (NEW IN BOX)



RAVAS PROLINE TOUCH 1000 KG WEIGH HAND PALLET TRUCK SCALE



RAVAS PROLINE TOUCH 1000 KG WEIGH HAND PALLET TRUCK SCALE



MINEBEA INTEC IF DRIVE-THROUGH SCALES, (NEW IN CRATE)



METTLER TOLEDO IND570 WEIGHING TERMINAL

PLANT SUPPORT

PLANT SUPPORT

(40) THERMO SCIENTIFIC HYCLONE SMARTAINER II 1000L BIOPROCESS CONTAINER (Location: Portsmouth, NH)

2019 BAKER STERILGARD SG604 BIOLOGICAL SAFETY CABINET, s/n 128704 (Location: Portsmouth, NH)

2016 BAKER STERILGARD III ADVANCE BIOLOGICAL SAFETY CABINET, s/n 121133 (Location: Portsmouth, NH)

ALSO: 2014 ROBOVENT DFP-800-1 Weld Vent Dust Collector, s/n 24063, .75 HP; FLEX RITE RES Premium Suction and Discharge Hose; VIDMAR Cabinet; JUSTRITE Flammable Liquids Storage Cabinet; JUSTRITE Safety Disposal Cans; Heavy Duty Modular Work Benches; Assorted ULINE Divider Boxes; Reclosable Bags; RUBBERMAID Boxes; METRO Rack Shelving; and More!



BAKER BIO SAFETY CABINET



ROBOVENT DFP-800-1 WELD VENT DUST COLLECTOR



THERMO SCIENTIFIC HYCLONE SMARTAINER II BIOPROCESS CONTAINER



MECO GII-A 40 HP COMPRESSOR



BALDOR 5 HP SUPER E MOTOR



FLEX RITE RES PREMIUM SUCTION AND DISCHARGE HOSE



JUSTRITE SAFETY DISPOSAL CANS



VIDMAR CABINET

For auction inquiries, please contact Jennifer Reiner at (847) 545-6374 or jennifer@perfectionindustrial.com

Bidding Available Through
BidSpotter

View our current auction schedule at www.perfectionindustrial.com

SALE CLOSING

Wednesday, March 27, at 10 AM PT

SALE LOCATION

1978 W Winton Ave.
Hayward, CA 94545

INSPECTION

Tuesday, March 26, from 9 AM to 4 PM PT, by appointment only

REMOVAL

All items must be removed no later than Friday, April 19. All removal is strictly on an appointment only basis. Anyone removing purchased items with a lift truck or another powered vehicle must have a certificate of insurance with a \$2M General Liability policy, the policy must include a Worker's Compensation rider, and that certificate of insurance must be provided to the auctioneer for review and approval prior to the auction.

TERMS OF SALE

An 18% Buyer's Premium will be charged on all assets purchased by buyers providing full payment is made within 48 hours following the sale. Acceptable forms of payment are cashier's check, company check (with bank letter of guarantee) or wire transfer within 48 hours of the sale close. For any Buyers failing to pay within the 48 hour stated payment period, the Buyer's Premium will be increased to 20%. All invoices paid with a credit card are subject to a 20% Buyer's Premium. Everything will be sold to the highest bidder, in accordance with the Auctioneer's customary "Terms of Sale", copies of which will be posted on the Auctioneer's website and subject to additional terms announced the day of sale. All items are sold "As is, Where is" without any warranty, express or implied.

FURTHER INFORMATION

For auction inquiries, please contact Jennifer Reiner at (847) 545-6374 or jennifer@perfectionindustrial.com.