

# 2-DAY LIVE WEBCAST <sup>ONLINE ONLY</sup> AUCTION

Large Plant Closure of Machining,  
Fabrication, Welding & Finishing Facility



**Hutchinson  
Manufacturing**

## DAY 1

LIVE AUCTION via WEBCAST

### SALE DATE

Tuesday, October 15, at 10:00 AM CT

### COMPLETE CATALOG & INFORMATION:

<https://perfection.global/hutchinson-day1>

## DAY 2

LIVE AUCTION via WEBCAST

### SALE DATE

Wednesday, October 16, at 10:00 AM CT

### COMPLETE CATALOG & INFORMATION:

<https://perfection.global/hutchinson-day2>

### SALE LOCATION

720 Minnesota Hwy 7,  
Hutchinson, MN 55350

### INSPECTION

Monday, October 14, from 8:30 AM  
to 4:30 PM CT, or by appointment

**PRE-AUCTION  
OFFERS INVITED  
ON MAJOR ASSETS**



KINETIC K2500DA CNC PLASMA/OXY FUEL CUTTING SYSTEM



TOSHIBA BP-150.R22 CNC HORIZONTAL BORING MILL

**OVER 1,300 TOTAL LOTS OFFERED!** **Day 1:** 2024 KINETIC K2500DA CNC Plasma/Oxy Fuel Cutting System; 2017 MARVEL 380A-PC3-60 Auto Vert Bandsaw; Fabricating Equipment; (4) ARC SPECIALTIES Bore Clad Welding Systems; (60+) Welders - New as 2024; (16) DEMMELER/BLUCO 3D Welding Tables & Accessories; Finishing; (10) Forklifts - Up to 22,500 lb.; CASE & NEW HOLLAND Loaders; Plant Support; **Day 2:** 2013 TOSHIBA BP-150.R22 & 2012 TOSHIBA BTH-130.R18 CNC Boring Mills; 2006 VISION WIDE VB-3016 CNC Bridge Mill; 2005 DAEWOO ACE-H100 HMC; (5) HAAS VMC's; ZEISS CMM; (6) FARO/ROMER Portable CMM Arms - New as 2023; Inspection/QA Equipment; Machine Tools; Workholding; Huge Qty of Tooling; Modular Cabinets; Plant Support



**PERFECTION  
Industrial Sales**

Perfection Industrial Sales

ph +1-847-545-6374 • fax +1-847-427-8884

[www.perfectionindustrial.com](http://www.perfectionindustrial.com)

In  
conjunction  
with:





CNC PLASMA CUTTING SYSTEM

DAY 1

LIVE AUCTION  
via WEBCAST

Sale Date: Tuesday, October 15, at 10 AM CT

CNC PLASMA CUTTING SYSTEM

2024 KINETIC K2500DA CNC PLASMA/OXY FUEL CUTTING SYSTEM, s/n K2500-5330-706, w/ PC Based 19" LCD Touch Screen Control, 10'8" x 41'4" Effective Cutting Area, 984 IPM Max. Traverse Speed, Automated Contour Plasma Bevel Head, (1) Oxy Fuel Station, Floor Mounted Rail System, Heavy Duty Down Draft Cutting Table W/Auto Cleaning System, HYPERTHERM HPR400XD Plasma Unit, TORIT DFO3-12 Fume/Dust Collector, NOTE: Installed May 2024, New Cost Over \$650,000



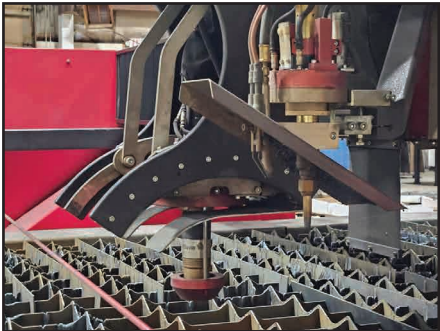
KINETIC K2500DA CNC PLASMA/OXY FUEL CUTTING SYSTEM



KINETIC K2500DA CNC PLASMA/OXY FUEL CUTTING SYSTEM



KINETIC BEVEL CUTTING HEAD



KINETIC BEVEL CUTTING HEAD & OXY TORCH HEAD



HYPERTHERM HPR 400XD PLASMA UNIT



TORIT DFO3-12 FUME/DUST COLLECTOR



BANDSAWS, CNC PRESS BRAKE, CNC 5-AXIS LASER, (4) BORE CLAD WELDING SYSTEMS

BANDSAWS

**2017 MARVEL 380A-PC3-60 CNC VERTICAL BANDSAW**, s/n E380-0368PC3S, w/ PC3 Control w/10" Color Touchscreen Display, 15" x 20" Nominal Capacity, 15" x 9.25" at 60 Degrees, 15" Round Capacity, 1.25" x .042" Blade, 60-400 FPM Blade Speeds, 48" Stroke Auto Bar feed, 60 Deg. Tilt Column, In-Feed Roller Conveyor

**HEM H110A 12" X 12" AUTOMATIC HORIZONTAL BANDSAW**, s/n 329990, Auto Bar Feed

**FMB MAJOR SEMI-AUTOMATIC MITERING HORIZONTAL BANDSAW**, s/n 70395, 10-1/4" Capacity Round

CNC PRESS BRAKE

**AMADA HFE-220-4-S 242 TON CNC PRESS BRAKE**, s/n N000616, W/ OPERATEUR 8-Axis PC-Based CNC Control, 168.5" Overall Bed Length, 144" Between Housings, 7.87" Stroke, 6-Axis Back Gauge, Crowning

CNC 5-AXIS LASER

**2000 TANAKA LMX III 30 TF4000 CNC 5 AXIS LASER CUTTING SYSTEM**, s/n 12-15369, w/ FANUC Series 16i-L Control, FANUC C4000A 4,000 W Laser, 10'x 20' Down Draft Cutting Table, ORION Chiller



MARVEL 380A-PC3-60 CNC VERTICAL BANDSAW



AMADA HFE-220-4-S CNC PRESS BRAKE



TANAKA LMX III 30 TF4000 CNC 5 AXIS LASER CUTTING SYSTEM

(4) BORE CLAD WELDING SYSTEMS

**2012 ARC SPECIALTIES ARC-05R 3 AXIS BORE CLAD WELDING SYSTEM**, s/n 1357-20718, w/ 18'x 18' Jib Arm Travel, MILLER XMT450 CC/CV Power Supply, LINCOLN 4r220 Wire Feed, Chiller

**2012 ARC SPECIALTIES ARC-5P 3 AXIS BORE CLAD WELDING SYSTEM**, s/n 1325-20717, w/ 60" Diameter Rotary Table, 12'x 10' Jib Arm Travel, MILLER XMT450 CC/CV Power Supply, LINCOLN Wire Feed, Chiller

**2014 ARC SPECIALTIES ARC-5P+ 3 AXIS BORE CLAD WELDING SYSTEM**, s/n 1476-20951, w/ 60" Diameter Rotary Table, 3'x 6' Jib Arm Travel, MILLER XMT450 CC/CV Power Supply, LINCOLN Wire Feed, Chiller

**2013 ARC SPECIALTIES ARC-5P+ 3 AXIS BORE CLAD WELDING SYSTEM**, s/n 1396-20802, w/ 48" Diameter Rotary Table, 3'x 6' Jib Arm Travel, MILLER XMT450 CC/CV Power Supply, LINCOLN Wire Feed, Chiller



2012 ARC SPECIALTIES ARC-05R BORE CLAD WELDING SYSTEM

For auction inquiries,  
please contact Jennifer Reiner at  
(847) 545-6374 or  
jennifer@perfectionindustrial.com



## (4) BORE CLAD WELDING SYSTEMS, (23) 3D WELDING TABLES



2012 ARC SPECIALTIES ARC-5P CLAD WELDING SYSTEM



ARC SPECIALTIES ARC-5P+ CLAD WELDING SYSTEM



ARC SPECIALTIES ARC-5P+ CLAD WELDING SYSTEM

### (23) 3D WELDING TABLES

(2) DEMMELER/BLUCO MODULAR FIXTURING 3D WELDING TABLES, 59-1/8" x 118-1/8"

(6) DEMMELER/BLUCO MODULAR FIXTURING 3D WELDING TABLES, 59-1/8" x 59-1/8"

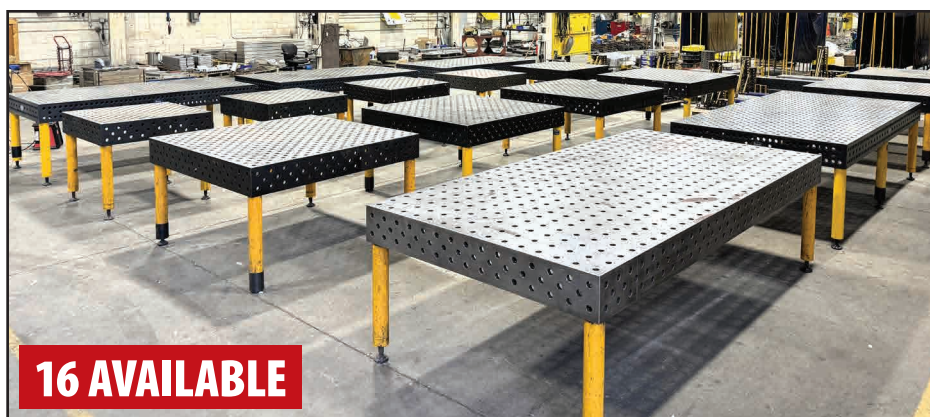
(3) DEMMELER/BLUCO MODULAR FIXTURING 3D WELDING TABLES, 47" x 94.5"

DEMMELER/BLUCO MODULAR FIXTURING 3D WELDING TABLE, 47.25" x 47.25"

(4) DEMMELER/BLUCO MODULAR FIXTURING 3D WELDING TABLES, 39.25" x 39.25"

(7) ACORN 5' X 10' WELDING TABLES

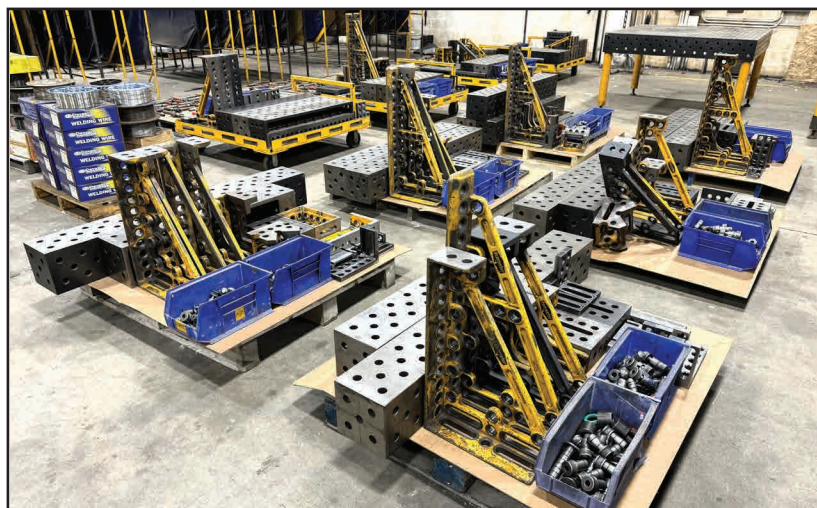
Extensive Selection of DEMMELER/BLUCO Accessories Including Fixturing, Angle Plates, Parallels, Clamping and Bolts



VIEW OF DEMMELER/BLUCO 3D WELDING TABLES



ACORN 3D WELDING TABLES



VIEW OF DEMMELER/BLUCO ACCESSORIES



# (44) WELDERS, WELDING POSITIONERS

## (44) WELDERS

NOTE: SEE CATALOG FOR SERIAL NUMBERS

- (4) 2023 MILLER MAXSTAR 400 TIG WELDERS
- MILLER DYNASTY 350 TIG WELDER
- (2) MILLER DYNASTY 280 TIG WELDERS
- MILLER SYNCROWAVE 250 TIG WELDER, w/ COOLMATE 4 Chiller
- (2) 2022 & (1) 2021 MILLER DELTAWELD 500 MIG WELDERS, w/ INTELLIX ELITE Wire Feed
- (3) MILLER INVISON 456P MIG WELDERS, w/ 60M Wire Feed
- (8) MILLER AXCESS 450 MIG WELDERS, w/ AXCESS Wire Feed
- (2) 2023 MILLER DELTAWELD 350 MIG WELDERS, w/ INTELLIX PRO Wire Feed
- (6) MILLER DELTAWELD 302 MIG WELDERS, w/ 70 SERIES or 60 SERIES Wire Feed
- (4) MILLER CP-300 DC MIG WELDERS, w/ 70 SERIES Wire Feed
- LINCOLN FLEXTEC 350X MIG WELDER, w/ 84 Power Feed
- (3) LINCOLN S350 POWER WAVE MIG WELDERS, w/ 84 Power Feed
- (6) 2016 OTC WELBEE P400 MIG WELDERS, w/ CM-743-U Wire Feed

**HYPERTHERM POWERMAX 105 PLASMA CUTTING SYSTEM**  
**2023 HYPERTHERM POWERMAX 30 AIR PLASMA CUTTING SYSTEM**  
**(10) MILLER WELDING BOOMS UP TO 16'**  
**ALSO:** Stud Welders, Leads, Whips, Welding Wire Spools, Electrodes, Torch Carts, Rosebud Torches, Protective Clothing, Consumables, Welding Curtains and Much More



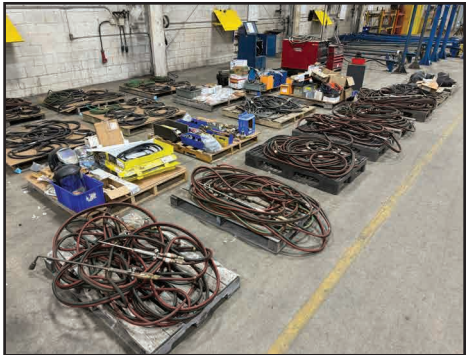
VIEW OF WELDERS



VIEW OF WELDERS & CLAMPS



VIEW OF WELDERS



VIEW OF WELDING ACCESSORIES

## WELDING POSITIONERS

- 2018 ALM POSITIONERS MHL-2P 15,000 LB. ELEVATING HEADSTOCK/ MOBILE TAILSTOCK WELDING POSITIONER, s/n 218E-02311
- (2) ROTARY LIFT MCH413U2A00 13,000 LB. AUTOMOTIVE LIFT/ELEVATING MOBILE HEADSTOCK/TAILSTOCK WELDING POSITIONERS, s/n HDC18J0014, HDC18J0013 & HDC18J006, HDC18J0015
- HASSLEHOLMS MEKANISKA AB L-2 17,600 LB. WELDING POSITIONER, s/n OB2291, w/ 48" x 48" Table
- PANDJIRIS 60-12AB 6,000 LB. POSITIONER, s/n 18512700-3, w/ 48" x 48" Table



(10) MILLER WELDING BOOMS UP TO 16'



ALM POSITIONERS 15,000 LB. WELDING POSITIONER



ROTARY LIFT 13,000 LB. WELDING POSITIONERS



ROTARY LIFT 13,000 LB. WELDING POSITIONERS



# WELDING POSITIONERS, INDUCTION HEATERS, FINISHING DEPT., ROLLING STOCK



HASSEHOLMS MEKANISKA WELDING POSITIONER



PANDJIRIS 60-12AB 6,000 LB. POSITIONER



JPW HEAT TREAT BATCH OVEN

## INDUCTION HEATERS

2013 PDS BARTECH PCE-630 PRE/POST WELD INDUCTION HEATING SYSTEM, s/n 13-1658, 75 kva, 6 Zone

MILLER PROHEAT 35 INDUCTION HEATING SYSTEM, s/n MA430072G

## FINISHING DEPARTMENT

2013 JPW HEAT TREAT BATCH OVEN, s/n 001368, w/ Power Up Door, 5'W x 5'H x 8'D Chamber, Natural Gas Fired, 1.8 Million BTU, 1300 Deg. F Temp.

CLECMO SANDBLAST BOOTH, s/n 3546, w/ 30'L x 12'W x 11'H, Double End Doors, Down Flow Recovery, Bucket Elevator Media Return, (2) CLECMO Media Blasting Tanks, Hose and Nozzle, Control



PDS BARTECH PRE/POST WELD INDUCTION HEATING SYSTEM



CLECMO SANDBLAST BOOTH

## ROLLING STOCK

CASE 621B WHEEL LOADER, s/n JEE0050424

2012 NEW HOLLAND L230 SKID STEER LOADER, s/n JAF0L230KCM449608, NOTE: Various Attachments Sold Separately

HYSTER H250D 22,500 LB. DIESEL FORKLIFT, s/n F007E02313A, w/ 9' Fork Length, Side Shift, Fork Positioners, Pneumatic Tires

HYSTER FG45T2-8 LP 9,400 LB. LPG FORKLIFT, s/n 135261A, w/ 6' Fork Length, 3-Stage Mast, Side Shift, Fork Positioners, Pneumatic Tires



HYSTER H250D DIESEL FORKLIFT



CASE 621B WHEEL LOADER



NEW HOLLAND L230 SKID STEER LOADER

**PRE-AUCTION OFFERS INVITED  
ON MAJOR ASSETS**



# ROLLING STOCK

## ROLLING STOCK (CON'T)

**2010 KOMATSU FD80T-10 7,000 LB. DIESEL FORKLIFT**, s/n 5505, 6' Fork Length, 3-Stage Mast, Side Shift, Fork Positioners, Pneumatic Tires

**2013 KOMATSU FG25ST-16 4,050 LB. LPG FORKLIFT**, s/n A410097, w/ 4' Fork Length, 3-Stage Mast, Side Shift, Fork Positioners, Pneumatic Tires

**KOMATSU FG25ST-16 4,800 LB. LPG FORKLIFT**, s/n 2195506, w/ 4' Fork Length, 3-Stage Mast, Side Shift

**NISSAN MCP1F2A25LV 4,400 LB. LPG FORKLIFT**, s/n CP1F2-9P3186, w/ 42" Fork Length, 3-Stage Mast, Side Shift, STD Tread Tire

**KOMATSU FG25-14 3,750 LB. LPG FORKLIFT**, s/n 582739A, w/ 4' Fork Length, 3-Stage Mast, Side Shift

**ULINE H-5439 2,200 LB. ELECTRIC WALKIE STACKER**, s/n 25180700677

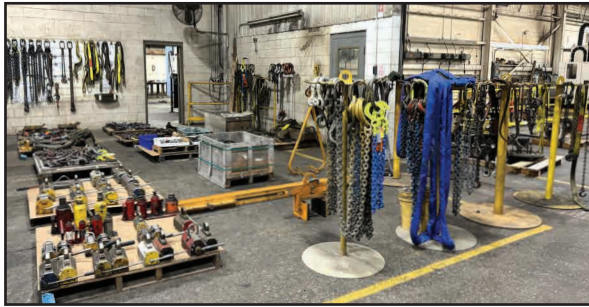
**ALSO:** Pallet Jacks, Fork Extensions, Barrel Lifter Fork Attachments, Rigging Equipment Including Riggings Trees, Chains, Slings, Straps, Shackles, Lifting Magnets and More



VIEW OF FORKLIFTS



VIEW OF LISTA CABINETS



VIEW OF RIGGING



VIEW OF LIFTING MAGNETS



VIEW OF MAG BASE DRILLS



VIEW OF HAND TOOLS



VIEW OF BESSEY CLAMPS

# DAY 1

LIVE AUCTION via WEBCAST

Sale Date:  
Tuesday, October 15, at 10 AM CT

To discuss your requirements for an auction please call Perfection Industrial **+1-847-545-6374**



DAY 2

LIVE AUCTION  
via WEBCAST

Sale Date: Wednesday,  
October 16, at 10 AM CT

(3) CNC BORING MILLS

**2013 TOSHIBA BP-150.R22 CNC TABLE TYPE HORIZONTAL BORING MILL**, s/n 150446, w/ TOSNUC 999 Control, 70.8" x 86.6" Built-In B-Axis Rotary Table, Travels: X-160", Y-120", Z-60", W-28", 44,000 lbs. Table Capacity, 60 ATC, 5.9" Spindle Dia., 50 HP Spindle, CAT 50 Spindle, 5-2500 RPM, Full Pendant for Manual Operation, Through Spindle Coolant, Flood Coolant, Chip Conveyor

**2012 TOSHIBA BTH-130.R18 CNC TABLE TYPE HORIZONTAL BORING MILL**, s/n 145700, w/ TOSNUC 999 Control, 55.1"x 70.8" B-Axis Rotary Table, Travels: X-100", Y-80", Z-60", W-28", 22,000 lbs. Table Capacity, 38 ATC, 5.1" Spindle Dia., CAT 50 Spindle, 5-4000 RPM, Full Pendant for Manual Operation, Through Spindle Coolant, Flood Coolant, Chip Conveyor

**WOTAN RAPID 2 CNC FLOOR TYPE HORIZONTAL BORING MILL**, s/n 68024, w/ GE FANUC Series 16-M Control, Travels: X-233", Y-78", Z-31", W-20", 60 ATC, 50 Taper, NOTE: Requires Repair, 8' x 23' T-Slot Floor Plate (Offered Separately)

**ALSO: BAYCAST LEVEL-TITE 72" x 252" x 7" T-Slot Table**, 71" x 144" x 4" Thick Drilled and Tapped T-Slot Sub Table, **TOSHIBA Right Angle Head**, **ALBERTI Right Angle Head**, (5) ITS Contouring Heads, Large Selection of Angle Plates, Tombstones, Etc.

CNC BRIDGE MILL

**2006 VISION WIDE VB-3016 CNC BRIDGE MILL**, s/n B1-0120, w/ FANUC 18i-MB Control, 51"x 122" Table, Travels: X-121", Y-62", Z-30", 32 ATC, 50 Taper, Spindle Speeds to 6,000 RPM, Wired for 4th Axis, Through Spindle Coolant, Flood Coolant, Oil Cooler System, Chip Conveyor

(3) HORIZONTAL MACHINING CENTERS

**2013 DOOSAN NHM-8000 HORIZONTAL MACHINING CENTER**, s/n MH0017-000079, w/ FANUC 31i-B Control, Twin 31.5"x 31.5" Pallets, Travels: X-55", Y-41", Z-47", 4,400 lb. Pallet Capacity, Full B-Axis, 90 ATC, 50 Taper, Spindle Speeds to 8,000 RPM, ChipBLASTER High Pressure Coolant, Through Spindle Coolant, RENISHAW Probe, Oil Chiller, Chip Conveyor **\*SOLD Prior to Auction\***

**2012 DOOSAN HM-8000 HORIZONTAL MACHINING CENTER**, s/n MH0012-001246, w/ FANUC 31i-A Control, Twin 31.5"x 31.5" Pallets, Travels: X-49, Y-39", Z-39", 90 ATC, 50 Taper, Spindle Speeds to 6,000 RPM, Flood Coolant, Oil Chiller, Chip Conveyor **\*SOLD Prior to Auction\***

**2005 DAEWOO ACE-H100 HORIZONTAL MACHINING CENTER**, s/n AH100148, w/ FANUC 18i-MB Control, Twin 39"x 39" Pallets, Travels: X-78", Y-49", Z-39", 60 ATC, 50 Taper, 4500 Max. RPM Spindle, Flood Coolant



TOSHIBA BTH-130.R18 CNC HORIZONTAL BORING MILL



BAYCAST T-SLOT TABLE



ITS CH16 CNC FACING HEAD



(1 OF 5) ITS CNC BORING ATTACHMENTS



TOSHIBA BP-150.R22 CNC HORIZONTAL BORING MILL



VIEW OF ANGLE PLATES



VISION WIDE VB-3016 CNC BRIDGE MILL



2005 DAEWOO ACE-H100 HMC



# TURNING CENTER, (5) VERTICAL MACHINING CENTERS

## TURNING CENTER

**2013 DOOSAN PUMA 400MB TURNING CENTER W/ LIVE MILLING**, s/n ML0130-004538, w/ DOOSAN-FANUC i Series Control, 30" Swing, 38.9" Between Centers, 4.5" Bar Capacity, Live Tooling, KITAGAWA 15" 3-Jaw Chuck, Tool Presetter, 12 Position Turret w/ Live Milling, Tailstock, Chip Conveyor **\*SOLD Prior to Auction\***

## (5) VERTICAL MACHINING CENTERS

**2005 HAAS VF-7/50 VERTICAL MACHINING CENTER**, s/n 39123, w/ HAAS Control, 28"x 84" Table, 30 ATC, 50 Taper, Spindle Speeds to 7,500 RPM, 30 HP 2-Speed Gear Drive, Through Spindle Coolant, Chip Auger

**2005 HAAS VF-3D VERTICAL MACHINING CENTER**, s/n 45667, w/ HAAS Control, 18"x 42" Table, Travels: X-40", Y-20", Z-25", 24 ATC, 40 Taper, 20 HP Vector Dual Drive, Through Spindle Coolant, Flood Coolant, Chip Auger

**2005 HAAS VF-3DYT VERTICAL MACHINING CENTER**, s/n 45848, w/ HAAS Control, 24" x 54" Table, Travels: X-40", Y-26", Z-26", 24 ATC, 40 Taper, 20 HP Vector Dual Drive, Through Spindle Coolant, Flood Coolant, Chip Auger

**2004 HAAS SUPER VF-2SS VERTICAL MACHINING CENTER**, s/n 36285, w/ HAAS Control, 24 ATC, 14" x 36" Table, Travels: X-30", Y-16", Z-20", 24 ATC, 40 Taper, Inline Direct Drive Spindle, 12,000 RPM, Flood Coolant, Chip Auger

**HAAS VF-2 VERTICAL MACHINING CENTER**, s/n 9333, w/ HAAS Control, 14" x 36" Table, Travels: X-30", Y-16", Z-20", 20 ATC, 40 Taper, Flood Coolant, Chip Auger



DOOSAN PUMA 400MB TURNING CENTER



2005 HAAS VF-7/50 VMC



2005 HAAS VF-3D VMC



2005 HAAS VF-3DYT VMC



2004 HAAS SUPER VF-2SS VMC



HAAS VF-2 VMC



# MISCELLANEOUS MACHINES & ACCESSORIES, INSPECTION

## MISCELLANEOUS MACHINES & ACCESSORIES

**2010 ERCOLINA MG030 MEGA 2.5" SEMI-AUTOMATIC TUBE BENDER**, s/n 010002, w/ Programmable Control, Mandrel, Rotary Draw, Programmable C-Axis, w/ A3 H76-VIS 10' Mandrel Table

**CLAUSING COLCHESTER 17 18"X 90" GAP BED ENGINE LATHE**, s/n 7/0220/13237, 12" 3-Jaw Chuck, Tailstock, Tool Post, Inch & Metric Threading, 20-1600 RPM, NEWALL DP700 2-Axis DRO

**2006 SHARP TMV-DVS 3 HP VERTICAL MILLING MACHINE**, s/n 50301856, w/ 10"x 50" Table, Power Draw Bar, ACU-RITE 3-Axis Programmable Control

**SHARP SG614 SURFACE GRINDER**, s/n 87C1428, w/ WALKER 6" x 14" Magnetic Chuck, ACU-RITE 2-Axis DRO

**HAAS HRT-310 4TH AXIS ROTARY TABLE**

**HAAS 24" 4TH AXIS ROTARY TABLE**

**SMW ET315V 4TH AXIS ROTARY TABLE**

**RUCKLE RG6 4TH AXIS ROTARY TABLE**

**ALSO: PARLEC Parsetter TMM Tool Presetter**, 700+ CAT 50 Tool Holders, 200+ CAT 40 Tool Holders, **HUOT** CAT 50 and CAT 40 Tool Holder Carts, Electro-Mag Chucks, **(35) KURT** Machine Vises Up To 10", Vise Jaws, Hold Downs, Clamping Tools, Lathe Chucks, Chuck Jaws, Perishable Tooling and Much More



SHARP 3 HP MILL



HAAS 4TH AXIS TABLE



PARLEC PARSETTER TMM TOOL PRESETTER



ERCOLINA 2.5" SEMI-AUTO. TUBE BENDER



CLAUSING COLCHESTER GAP BED ENGINE LATHE



HAAS AND SMW 4TH AXIS TABLES

## INSPECTION

**FARO PLATINUM PORTABLE CMM ARM**, s/n P10-02-07-05446

**FARO GAGE PLUS PORTABLE CMM ARM**, s/n F04-02-07-05737

**FARO TITANIUM PORTABLE CMM ARM**, s/n N10-02-04-02438

**ROMER ABSOLUTE ARM RA-7540-2 PORTABLE CMM ARM**, s/n 7540-2891-UC

**FARO FUSION PORTABLE CMM ARM**, s/n U12-05-08-06930

**FARO EDGE PORTABLE CMM ARM**, s/n E12-05-12-10176

**ZEISS ECLIPSE CMM**, s/n 200008281141

**GOULD-BASS MAGNE-TECH 1560W MAGNETIC PARTICLE INSPECTION UNIT**, s/n 120006

**(NEW) PHASE II 900-390 MICRO VICKERS HARDNESS TESTER**

**DILLON ED XTREME 220,000 LBF DYNAMOMETER**

**DILLON ED XTREME 100,000 LBF DYNAMOMETER**

**ALSO:** Large Selection of Inside Micrometers, Height Gages, Calipers, Bore Gages, Depth Gages, Radius Gages, Gage Block Sets, Pin Gage Sets, Granite Surface Plates, and More



VIEW OF TOOL HOLDERS



# INSPECTION, FACTORY SUPPORT EQUIPMENT



VIEW OF KURT VISES



VIEW OF FIXTURES & WORKHOLDING



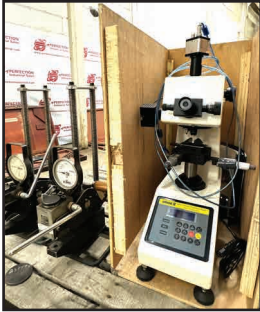
VIEW OF PORTABLE FARO & ROMER CMM ARMS



ZEISS ECLIPSE CMM



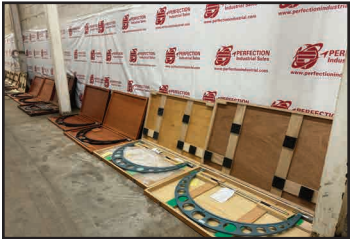
GOULD-BASS MAGNE-TECH  
MAGNETIC PARTICLE  
INSPECTION UNIT



(NEW) PHASE II 900-390  
MICRO VICKERS HARDNESS  
TESTER



DILLON DYNAMOMETERS



VIEW OF MICROMETERS

## FACTORY SUPPORT EQUIPMENT OFFERED BOTH DAYS

GARDNER DENVER ETU99A AUTO-SENTRY ES+ 300 HP AIR COMPRESSOR, s/n S091067  
GARNDER DENVER AP99K1 ELECTRA-SAVER 100 HP AIR COMPRESSOR, s/n S464051  
INGERSOLL RAND NVC1600A400 REFRIGERATED AIR DRYER, s/n WCH1034757, 220 MAWP  
POWERBOSS ARMADILLO 6X-LP RIDE-ON FLOOR SWEEPER, s/n 18570610  
NILFISK ADVANCE ADVENGER 2810C RIDE-ON FLOOR SCRUBBER, s/n 1837215  
2006 GENIE GS-2646 SCISSOR LIFT, s/n GS4606-82017  
UPRIGHT X20N SCISSOR LIFT, s/n 17697

ALSO: Drill Point Grinders, Tapping Arms, Tap Disintegrators, Double End Grinders, Drill Presses, Shop Presses, LISTA & STANLEY VIDMAR Modular Cabinets; STRONGHOLD Cabinets; KNAACK Gang Boxes; Tool Boxes; Rolling Gantries; Pallet Racking; Ladders; Safety Ladders; Large Quantity of Tool Steel Stock; Baler; Spill Kits & Platforms; Stock Carts; Dumping Scrap Hopper; Hand, Pneumatic & Power Tools; Strapping Caddies; MAINTENANCE CRIB Including Large Assortment of Switches, Contactors, Breaker Boxes, Fuses, Belts, Boards, Motors, Bearings, Valves, Hoses, Ballasts, Lights, Chain, Gears, Cylinders, Filters, Sprockets, Cams, Solenoids and More



GARDNER DENVER AIR COMPRESSOR



GARNDER DENVER 100 HP AIR  
COMPRESSOR



ACT CARTRIDGE TYPE DUST  
COLLECTOR



POWERBOSS ARMADILLO 6X-LP  
FLOOR SWEEPER



(2) SCISSOR LIFTS



INGERSOLL RAND  
REFRIGERATED AIR DRYER



KELLER DUST  
COLLECTOR



RIDGID POWER THREADER



TAP DISINTEGRATOR &  
TAPPING ARM



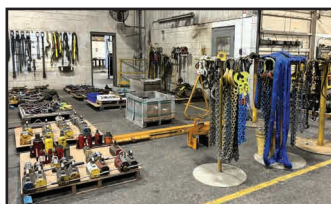
LISTA CABINETS



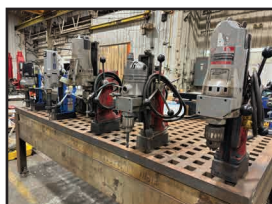
# FACTORY SUPPORT EQUIPMENT, RAW MATERIAL



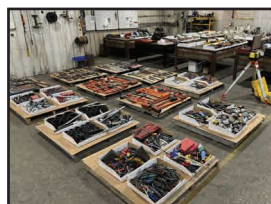
ASSORTED TOOL CHESTS



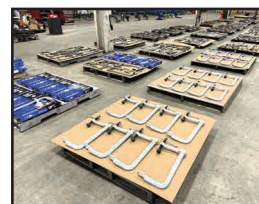
ASSORTED RIGGING



MAG BASE DRILLS



ASSORTED TOOLS



BESSEY CLAMPS

## RAW MATERIAL

OVER 100 TONS OF PLATE,  
Sheet and Structural Steel,  
Tool Steel, Stainless Steel  
Pipe and Tube



STRUCTURAL STEEL & RACKS



PLATE & SHEET STEEL

**Day 1: Lots 1-597**  
LIVE AUCTION via WEBCAST

**SALE DATE**  
Tuesday, October 15, at 10:00 AM CT

**Day 2: Lots 1000-1674**  
LIVE AUCTION via WEBCAST

**SALE DATE**  
Wednesday, October 16, at 10:00 AM CT

**SALE LOCATION**  
720 Minnesota Hwy 7,  
Hutchinson, MN 55350

**INSPECTION**  
Monday, October 14, from 8:30 AM  
to 4:30 PM CT, or by appointment

For auction inquiries, please contact Jennifer Reiner at  
(847) 545-6374 or [jennifer@perfectionindustrial.com](mailto:jennifer@perfectionindustrial.com)

View our current auction schedule at  
[www.perfectionindustrial.com](http://www.perfectionindustrial.com)

Bidding Available Through  
**BidSpotter**

### REMOVAL

All small items must be removed by Wednesday, October 23. All other items must be removed no later than Friday, November 8. All removal is strictly on an appointment only basis. Anyone removing purchased items with a lift truck or another powered vehicle must have a certificate of insurance with a \$2M General Liability policy, the policy must include a Worker's Compensation rider, and that certificate of insurance must be provided to the auctioneer for review and approval prior to the auction.

### TERMS OF SALE

An 18% Buyer's Premium will be charged on all assets purchased by buyers providing full payment is made within 48 hours following the sale. Acceptable forms of payment are cashier's check, company check (with bank letter of guarantee) or wire transfer within 48 hours of the sale close. For any Buyers failing to pay within the 48 hour stated payment period, the Buyer's Premium will be increased to 20%. All invoices paid with a credit card are subject to a 20% Buyer's Premium. Everything will be sold to the highest bidder, in accordance with the Auctioneer's customary "Terms of Sale", copies of which will be posted on the Auctioneer's website and subject to additional terms announced the day of sale. All items are sold "As is, Where is" without any warranty, express or implied.

### FURTHER INFORMATION

For auction inquiries, please contact Jennifer Reiner at (847) 545-6374 or [jennifer@perfectionindustrial.com](mailto:jennifer@perfectionindustrial.com).