

# ONLINE AUCTION

## CATERPILLAR<sup>®</sup> HYDRAULIC CYLINDER MANUFACTURING PLANT CLOSURE

### SALE DATE

Thursday, October 24, at 10 AM ET

### SALE LOCATION

650 Jefferson Road  
Sumter, SC 29153

### INSPECTION

Wednesday, October 23, from  
9 AM to 3 PM ET, or by appointment

### COMPLETE CATALOG & INFORMATION:

<https://perfection.global/catsumter>

**PRE-AUCTION  
OFFERS INVITED  
ON MAJOR ASSETS**



SIERRA SKIVING & ROLLER BURNISHING MACHINE

**Featuring 800+ Lots Including:** New as 2015 SIERRA Skiving & Roller Burnishing Machines; New as 2010 THOMPSON and MTI Friction Welders; (2) 2019-2018 OKUMA LB4000EX2 Turning Centers; (4) New as 2008 MAZAK QTN 400M-II, 350M-II, & 300-II-M Turning Centers; 2007 MAZAK INTEGREX e-650H II Turn/Mill Center; 2007 MAZAK VTC-250D VMC; 2013 LEITZ 120" CMM; DAINICHI DLX 75B-400 Engine Lathe; (20+) Robotic Weld Cells, New as 2015; Wash Lines; THERMO-TRON-X 36"W x 120"H Paint Line; Toolroom; QC; Factory Support Equipment; Etc.



MAZAK INTEGREX E-650HS2 TURNING AND MILLING CENTER



**PERFECTION  
Industrial Sales**

Perfection Industrial Sales  
ph +1-847-545-6374 • fax +1-847-427-8884  
[www.perfectionindustrial.com](http://www.perfectionindustrial.com)

Bidding Available Through  
**BidSpotter**



# TURNING CENTERS

## TURNING CENTERS

**2019 OKUMA LB4000EXII-M C1500 TURNING CENTER**, s/n 221480, w/ OSP-P300LA Control, LNS SLUA-M-3.1 AutoBlok Steady Rest, POSITROL Collet Chuck, 12-Position Turret, Live Milling, X-11.81", Z-62.60", 60" Centers, 26.38" Max Swing Over Bed, 59.86" Max Turning Length, 18.90" Max Turning Dia., Up To 4,200RPM, 3" Thru Spindle, Mist Collector, LNS Chip Conveyor

**2018 OKUMA LB4000EXII TURNING CENTER**, s/n 212298, w/ OSP-P300LA Control, LNS SLUA-M-3.1 AutoBlok Steady Rest, POSITROL Collet Chuck, 12-Position Turret, Live Milling, X-11.81", Z-62.60", 60" Centers, 26.38" Max Swing Over Bed, 59.86" Max Turning Length, 18.90" Max Turning Dia., Up To 4,200RPM, 3" Hole Thru Spindle, Mist Collector, LNS Chip Conveyor

**2008 MAZAK QUICK TURN NEXUS 400M-II TURNING CENTER**, s/n 202018, w/ MAZATROL Matrix Nexus Control, 33.27" Max Swing, 22.83" Max Machining Dia, 78.7" Centers, 4.6" Max Bar Cap., 2500 RPM, 40 HP, X-13.38", Z-42.13", W-40.35", 12-Position Turret, Tailstock, SMW Autoblok Programmable Steady Rest

**(2) 2007 MAZAK QUICK TURN NEXUS 350M-II TURNING CENTERS**, s/n 192407, 192331, MAZATROL Matrix Nexus Control, X-10.13", Z-63.52", 26.77" Swing, 16.54" Turning Diameter, 4" Hole Thru Spindle, 12-Position Turret, 2000 RPM, SMW Autoblok Steady Rest, POSITROL Collet Chuck, Tail Stock, Jorgenson Chip Conveyor, Mist Collector

**2006 MAZAK QUICK TURN NEXUS 300-II M TURNING CENTER**, s/n 189163, w/ MAZATROL Matrix Nexus Control, 59.05" Centers 4,500 RPM Max Spindle Speed, 4" Hole Thru Spindle, 12-Position Turret, Tailstock, Collet Chuck



OKUMA LB4000EXII-M C1500 TURNING CENTER



OKUMA LB4000EXII TURNING CENTER



MAZAK QTN 400M-II TURNING CENTER



MAZAK QTN 350M-II TURNING CENTER



MAZAK QTN 300-II M TURNING CENTER



# CNC TURNING & MILLING CENTER, CNC LATHES, MACHINING CENTERS

## CNC TURNING & MILLING CENTER

**2007 MAZAK INTEGREX E-650HS2 TURNING AND MILLING CENTER**, s/n 195108, w/ MAZATROL Matrix Control, 36.2" Swing, 32" Turning Diameter, 118.1" Max Turning Length, X-40.35", Y-26.38", -30/+210° B-Axis Head Tilt, Dual 10" 3-Jaw Chucks, CAT 50 Spindle Taper, 80 ATC



MAZAK INTEGREX E-650HS2 TURNING AND MILLING CENTER

## CNC LATHES

**WARNER & SWASEY SC-20 CNC LATHE**, s/n 2524740, w/ FANUC GN1 Series Control, 120" Centers, Tailstock, Steady Rest, 8-Position Turret  
**DAINICHI 75BX400 CNC LATHE**, s/n 28196, FANUC Series 20-T Control, 30" Swing, 158" Centers, 192" Bed Length, BUCK 19.5" 3-Jaw Chuck, 7.5" Hole Thru, 4-Way Tool Post, Tailstock, (2) Steady Rests  
**ROMI-BRIDGEPORT EZ-PATH-SD CNC LATHE**, s/n 002-083787-363, w/ BRIDGEPORT BPC-T Control, 40" Between Centers, 16" Swing, 12" 6-Jaw Chuck, Quick Change Tool Post, Tailstock

## MACHINING CENTERS

**2007 MAZAK VTC-250D VERTICAL MACHINING CENTER**, s/n 201955, w/ MAZATROL 640 MN Control, Travels: X-69", Y-25", Z-27", 26" x 82" Table, CAT 50 Spindle Taper, 24-Position ATC, 6,000 RPM Spindle, Chip Conveyor  
**(2) MAKINO A88E HORIZONTAL MACHINING CENTERS**, s/n 02-036 & 02-0327, w/ PROFESSIONAL 3 Control, Travels: X-35.43", Y-31.49", Z-38.1", Twin 24.8" x 24.8" Pallets, 6600 Lb. Pallet Capacity, 12,000 RPM, 40-ATC, CAT 50 Spindle Taper, (PIN PLANT)



WARNER & SWASEY SC-20 CNC LATHE



ROMI-BRIDGEPORT EZ-PATH-SD CNC LATHE



MAKINO A88E HORIZONTAL MACHINING CENTER



DAINICHI 75BX400 CNC LATHE



MAZAK VTC-250D VERTICAL MACHINING CENTER



# SKIVING & ROLLER BURNISHING MACHINES, ROBOTIC WELDING CELLS

## SKIVING & ROLLER BURNISHING MACHINES

**2015 SIERRA 100" STROKE BORE SKIVING & ROLLER BURNISHING MACHINE**, s/n 3079, w/ ALLEN BRADLEY Panel View Plus 1250 PLC Control, 120mm - 225mm Bore Skiving Heads, 85 HP, Chip Conveyor

**2005 SIERRA 168" STROKE BORE SKIVING & ROLLER BURNISHING MACHINE**, s/n 3019, w/ FANUC Quick Panel PLC, 85 HP, Up to 150mm Heads, Chip Conveyor

**2005 SIERRA 3M 120" STROKE BORE SKIVING & ROLLER BURNISHING MACHINE**, s/n 3025, w/ 50 - 75mm Bore Skiving Heads, Operators Pendant, 85 HP, Chip Conveyor, no PLC Screen



SIERRA BORE SKIVING & ROLLER BURNISHING MACHINE



2005 SIERRA BORE SKIVING & ROLLER BURNISHING MACHINE



2005 SIERRA BORE SKIVING & ROLLER BURNISHING MACHINE

## ROBOTIC WELDING CELLS

**2015 VIZIENT INDEXING SKY GIMBAL ROBOTIC WELD CELL**, s/n 50018851, w/ Indexing Sky Gimbal Positioner, Sliding Tailstock & Pneumatic Live Center, 2015 FANUC Arc Mate 120iC Robot w/ Fanuc R-30iB Control, s/n E15633052, (2) LINCOLN POWER WAVE S700 Welding Power Supplies, LINCOLN Power Mig 256 Welder, GH Induction Atmospheres Temperature Controller, DIMPLEX SVI-5000-M Chiller, THERMAL CARE Accuchiller, Enclosure

**ELLISON TECHNOLOGIES DUAL WIRE WELD CELL**, s/n 203400, w/ 162" Between Centers, 2008 FANUC ArcMate 120iC Robot w/ R-30iA Control, s/n E08705199, Pendant Control, (2) LINCOLN S700 Power Wave Welding Power Supply's, (3) LINCOLN Cool Arc 55S Water Coolers, (2) AUTODRIVE 19 Tandem Feeders, RADYNE Power Station, KOOLANT KOOLER SVI-5000-M, (2) MILLER Coolmate 4 Coolers



VIZIENT INDEXING SKY GIMBAL ROBOTIC WELD CELL



# ROBOTIC WELDING CELLS

## ROBOTIC WELDING CELLS CON'T

**AUTOMATED CONCEPTS ROBOTIC WELD CELL**, s/n 0-79919, w/ 162" Between Centers, 18" 2-Jaw Chuck, FANUC Arm Mate 100iC Robot w/ Fanuc R-J-3 Control, s/n E00Y06142, Pendant, Accu Chiller, LINCOLN Power Wave R655

**FANUC ROBOTIC WELDING CELL**, w/ 2009 FANUC Arc Mate 100iC Robot w/ R-30iA Control, s/n E09900046, Pendant, LINCOLN S500 Power Wave Welding Power Supply, s/n U1990402898, LINCOLN Cool Arc 55S Water Cooler, 38" x 46" Welding Table, Enclosure

**AUTOMATED CONCEPTS CAP WELDING CELL**, w/ 2006 FANUC Arc Mate 100iBe Robot w/ R-J-3iC Controller, s/n R06675355, (2) Welding Positioners Approx. 70" X-Travel, 55" Between Centers, LINCOLN Powerwave 455M/STT Power Source, s/n U1051203748, Thermal Care Accuchiller, MILLER Coolmate 4 Cooler, Safety Cage Enclosure

**BANCROFT WELDING CELL**, w/ ALLEN BRADLEY PanelView Plus 1000 PLC Control, 2011 FANUC Arc Mate 100iC Robot w/ R-30iA Control, s/n E11831300, LINCOLN Power Wave Power Supply, s/n U1060917066, LINCOLN 4R220 Autodrive Wire Feed, LINCOLN Power Beam, KOOLANT KOOLERS SVV5000-W Chiller, MILLER Coolmate 4 Cooler, AMBRELL Ekoheat Induction Heating System, 84" Between Centers, Positioner

**(4) 2012 VIZIENT DUAL STATION ROBOTIC WELDING CELLS**, 60" Swing x 144" Part Length, w/ Fanuc Arc Mate 120iC/10L 6-Axis Robot with Traveling Base, Fanuc R-30iA Control, Lincoln Power Wave i400 400A Power Supply with 4R220 Feed, Genesis PLC Cell Control, Teach Pendant, (2) Positioner Stations, 2,500 Lb Part Weight Capacity per Station (Located in Sanford, NC)

**(2) 2012 VIZIENT DUAL STATION DUAL ROBOT WELDING CELLS**, 40" Swing x 110" Part Length, w/ (2) Fanuc Arc Mate 120iC/10L 6-Axis Robots, (2) Fanuc R-30iA Controls, (2) Lincoln Power Wave i400 400A Power Supplies with 4R220 Feeders, GE Quickpanel View PLC Control, (2) Torch Cleaners, (2) Chillers, (2) Positioner Stations, 2,000 Lb Part Weight Capacity per Station (Located in Sanford, NC)

**(2) 2013-2012 VIZIENT DUAL STATION ROBOTIC WELDING CELLS**, 17" Swing x 70" Part Length, w/ Fanuc Arc Mate 120iC/10L 6-Axis Robot with Traveling Base, Fanuc R-30iA Control, Lincoln Power Wave i400 400A Power Supply with 4R220 Feed, Genesis PLC Cell Control, Teach Pendant, (2) Positioner Stations, 1,500 Lb Part Weight Capacity per Station (Located in Sanford, NC)

**(7) 2012 VIZIENT DROP CENTER ROBOTIC WELDING CELLS**, 133" Swing x 48" Height on Table, w/ Fanuc M-710iC/20L 6-Axis Robot with Traveling Base, Fanuc R-30iA Control, Lincoln Power Wave i400 Power Supply with 4R220 Feed, Genesis PLC Cell Control, Teach Pendant, 4,500 Lb Part Weight Capacity (Located in Sanford, NC)

**(2) 2012 VIZIENT DROP CENTER ROBOTIC WELDING CELLS**, 100" Swing x 28" Height on Table, w/ Fanuc Arc Mate 120iC/10L 6-Axis Robot with Traveling Base, Fanuc R-30iA Control, Lincoln Power Wave i400 Power Supply with 4R220 Feed, Genesis PLC Cell Control, Teach Pendant, 1,200 Lb Part Weight Capacity (Located in Sanford, NC)



FANUC ROBOTIC WELDING CELL



AUTOMATED CONCEPTS CAP WELDING CELL



BANCROFT WELDING CELL



2012 VIZIENT DUAL STATION ROBOTIC WELDING CELL



2012 VIZIENT DUAL STATION ROBOTIC WELDING CELL



2012 VIZIENT DUAL STATION ROBOTIC WELDING CELL



# FRICITION WELDERS, PORT & SEAM WELDERS

## FRICITION WELDERS

**2010 MTI 100 TON DIRECT DRIVE FRICITION WELDER**, s/n 3183, w/ 60" Max Stroke, 72.8" Max Part Length, Slag Cutoff, 372 Amp, 258 KW

**2007 THOMPSON 40 TON SINGLE END SLIDING HEAD FRICITION WELDER**, s/n T70542, 1/2" to 4.7" Diameter Gripping Capacity, 60" Adjustable Backstop, SIEMENS Simatic Panel PLC and PRO-FACE Controls



MTI 100 TON DIRECT DRIVE FRICITION WELDER



THOMPSON 40 TON SINGLE END SLIDING HEAD FRICITION WELDER

## PORT & SEAM WELDERS

**2018 LINCOLN PORT WELDER**, s/n 50023418, w/ 60" Centers, Smart Weld 2000, Allen Bradley Control

**PORT WELDER**, 60" Between Centers, Smart Weld 2000 Power Source, w/ Exter T100 PLC Control

**CUSTOM SEAM WELDER**, w/ Lincoln Arc Welder and Lincoln Electric DC-600 Welder, 110" Max Pipe Length

**ALSO:** Assorted LINCOLN Welders, Welding Accessories & Consumables



PORT WELDER



CUSTOM SEAM WELDER



LINCOLN PORT WELDER



VIEW OF LINCOLN WELDERS

For auction inquiries,  
please contact Jennifer Reiner at  
(847) 545-6374 or  
[jennifer@perfectionindustrial.com](mailto:jennifer@perfectionindustrial.com)



# MISC. MACHINERY, WASH LINES

## MISC. MACHINERY

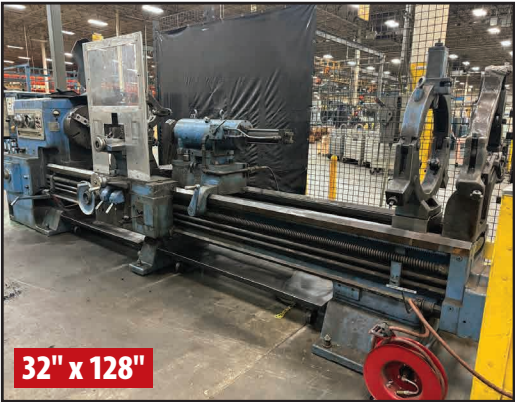
**FRYER MB-150 10 HP CNC VERTICAL MILL**, s/n 15253, ANILAM 3000 Touch Control, 16-1/2" x 62" Table  
**SUPERMAX 2 HP VERTICAL MILL**, 82-0710072, 9" x 42" Table, 80-2720 RPM, Mitutoyo 2-Axis DRO  
**LODGE & SHIPLEY 32" X 128" ENGINE LATHE**, 18" Chuck, Spindle Speeds Up To 650-RPM  
**CARLTON 4' X 11" RADIAL ARM DRILL**, 80-200 RPM Spindle Speed, 24" x 36" T-Slotted Table  
**2012 WAY TRAIN UE-330SA HORIZONTAL BANDSAW**, s/n 12051717, 13" x 20" Capacity, 82-270 FPM, 1-1/3" x .042" x 161-1/2" Blade Size  
**ROPER WHITNEY 816 BOX PAN BRAKE**, s/n 4544-2-06, 16 Ga. x 96"  
**CAMMANN C-38 SQSS TAP DISINTEGRATOR**, s/n 200915, 20 KVA  
**ENERPAC 25 TON H-FRAME HYDRAULIC PRESS**  
**PARLEC PARSETTER TMM SERIES 1500 TOOL PRESETTER**, s/n P506585-0910  
**ALSO: MAZAK Live Tools, OKUMA Live and Static Tool Holder, CAT 50 Tooling, CAT 40 Tooling, Boring Heads, CAPTO C8 Tooling, CAPTO C6 Tooling, Carbide Inserts, Turning Tools, Milling Tools, Taps, Drills, Centers and More**



FRYER MB-150 CNC VERTICAL MILL



SUPERMAX VERTICAL MILL



LODGE & SHIPLEY ENGINE LATHE



CARLTON 4' X 11" RADIAL ARM DRILL



ENERPAC 25 TON H-FRAME HYDRAULIC PRESS



WAY TRAIN UE-330SA HORIZONTAL BANDSAW



CAMMANN C-38 SQSS TAP DISINTEGRATOR



PARLEC PARSETTER TMM SERIES 1500 TOOL PRESETTER



VIEW OF CARBIDE TOOLING

## WASH LINES

**2007 RANSOHOFF 40" X 12" STAINLESS STEEL PASS-THROUGH WASHER**, s/n 4907  
**2003 RANSOHOFF 24" X 11" 3-STAGE FLOW-THROUGH WASH LINE**, s/n 4280, Stainless, Mesh Belt, 2' Wide Opening x 11" High, **\*Rebuilt 2013\***  
**STAINLESS STEEL PASS-THROUGH WASHER**, Approx. 86"W Capacity x 16'L, (6) Spray Nozzle System, Allen Bradley Panelview 600 PLC Control  
**STAINLESS STEEL HARPOON TYPE WASHER**, Approx. 64" x 20' w/ (3) Solvent/Solution Tanks, Allen Bradley Panelview Plus 600 Control  
**2012 RANSOHOFF 4-STATION, 3-STAGE HARPOON TYPE WASH LINE**, s/n RAM0241, Stainless, 130" x 24" Opening, 10' Stroke  
**CUSTOM EFD INDUCTION HARDENING ROD EYE**, 25 Kw, w/ Allen-Bradley Panelview Plus 1250 PLC



RANSOHOFF 24" X 11" 3-STAGE FLOW-THROUGH WASH LINE



RANSOHOFF 40" X 12" STAINLESS STEEL PASS-THROUGH WASHER



STAINLESS STEEL PASS-THROUGH WASHER



RANSOHOFF 4-STATION, 3-STAGE HARPOON TYPE WASH LINE

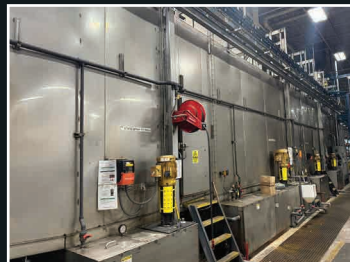
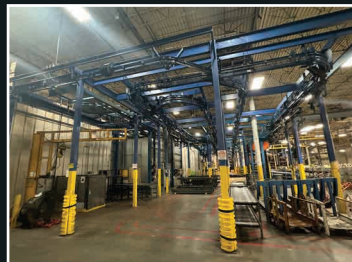
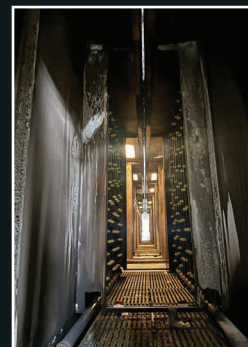
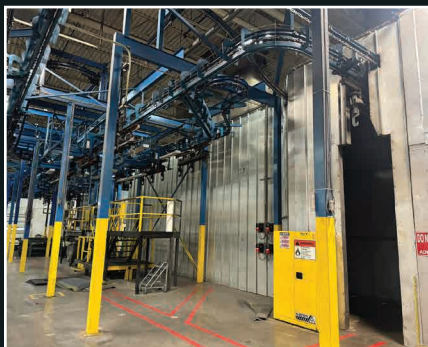


CUSTOM EFD INDUCTION HARDENING ROD EYE



# PAINT LINE, INSPECTION

## COMPLETE THERMO-TRON-X PAINT LINE



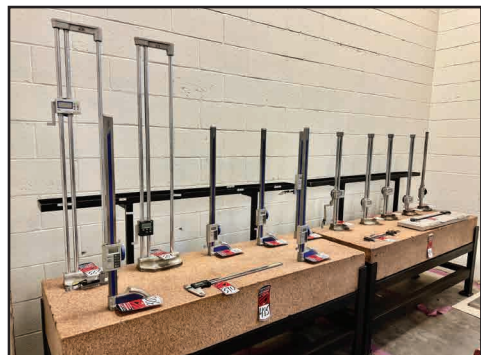
## PAINT LINE

**COMPLETE THERMO-TRON-X PAINT LINE**, Capacity of 36" W x 120" High, Comprising 6-Stage Thermo-Tron-X Wash with RO Rinse, Yokogawa Recorders, Allen Bradley PLC, Thermo-Tron-X Flash Dry System, Dual Level Operators Prep Station for Installing Caps and etc, (3) Gun Prime Booth with Automatic Gun Elevation, Kremlin Rexson Cyclomix Expert Electronic Mixing System, Manual Lift Station for Priming, (3) Gun Primary Booth with Automatic Gun Elevation, (4) Kremlin Rexson Cyclomix Expert Electronic Mixing Systems, Thermo-Tron-X Live Monitoring Systems, Primary Color Manual Lift Station, Drying Booth, 2 Level Operators Station for Unprep, 3000' Long, 2700 Lb Capacity Per Carrier

## INSPECTION

**2013 LEITZ REFERENCE HP 30 9 7 CMM**, s/n 456

**ALSO: MITUTOYO, STARRETT, and FOWLER** Digital Calipers up to 80", Digital Height Gages, METRIS K600 Optical 3D Laser Scanners, Outside Micrometers, Blade Mics, Thread Pitch Mics, Depth Indicators, Dial Bore Gages, Telescoping Gages, Sine Bars, Parallels, Surface Roughness Testers, Precision Squares, Gage Block Sets, Pin Gages, Master Rings, Thread Gages, Granite Surface Plates, Precision Torque Tools, Lab Ovens, Spectrometer, Analytical Balances, Ultrasonic Cleaner and More



HEIGHT GAGES



VIEW OF INSPECTION EQUIPMENT



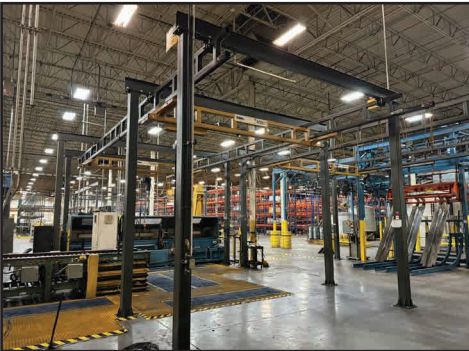
LEITZ REFERENCE HP 30 9 7 CMM



# PLANT SUPPORT

## PLANT SUPPORT

(60+) **SPANCO** and **GORBEL** Free Standing Crane Systems and Jib Cranes up to 4 Ton, (100+) **LISTA** and **VIDMAR** Modular Tool Cabinets, Huge Qty of Pallet Racking, Cylinder Test Stand and Cells, Power Tools, Pneumatic Tools, Hand Tools, Motors, Servo Motor, AC Drives, Lifting Magnets, Bearing, Fuses, Electrical Supplies, Self Dumping Hoppers, and Much More



FREE STANDING BRIDGE CRANE SYSTEMS



FREE STANDING BRIDGE CRANE SYSTEMS

MODULAR TOOL CABINETS

VIEW OF PALLET RACKING



VIEW OF PALLET RACKING

HUGE ASSORTMENT OF SUPPORT EQUIPMENT

VIEW OF MOTORS

For auction inquiries, please contact Jennifer Reiner at (847) 545-6374 or [jennifer@perfectionindustrial.com](mailto:jennifer@perfectionindustrial.com)

View our current auction schedule at [www.perfectionindustrial.com](http://www.perfectionindustrial.com)

Bidding Available Through  
**BidSpotter**

**SALE DATE**  
Thursday, October 24, at 10 AM ET

**SALE LOCATION**  
650 Jefferson Road  
Sumter, SC 29153

**INSPECTION**  
Wednesday, October 23, from  
9 AM to 3 PM ET, or by appointment

**REMOVAL**  
All small items must be removed by Thursday, October 31. All other lots, including larger machinery and equipment, must be removed no later than Friday, November 15. NO EXCEPTIONS. Removal times are Monday through Friday from 8:00 AM to 4:00 PM ET. Extended hours and weekends may be accommodated with prior appointment. All rigging services must be provided by a Caterpillar qualified and approved rigger.

**TERMS OF SALE**  
An 18% Buyer's Premium will be charged on all assets purchased by buyers providing full payment is made within 48 hours following the sale. Acceptable forms of payment are cashier's check, company check (with bank letter of guarantee) or wire transfer within 48 hours of the sale close. For any Buyers failing to pay within the 48 hour stated payment period, the Buyer's Premium will be increased to 20%. All invoices paid with a credit card are subject to a 20% Buyer's Premium. Everything will be sold to the highest bidder, in accordance with the Auctioneer's customary "Terms of Sale", copies of which will be posted on the Auctioneer's website and subject to additional terms announced the day of sale. All items are sold "As is, Where is" without any warranty, express or implied.

**FURTHER INFORMATION**  
For auction inquiries, please contact Jennifer Reiner at (847) 545-6374 or [jennifer@perfectionindustrial.com](mailto:jennifer@perfectionindustrial.com).

**EXCLUSIVE RIGGING CONTACTS**

**Pedowitz Machinery Movers**  
Carl Creek  
Phone: (417) 217-0828  
Email: [carlc@pedowitz.com](mailto:carlc@pedowitz.com)

**Hosea Project Movers**  
Ernie Liggett  
Phone: (859) 363-4752  
Email: [liggett@hosea.com](mailto:liggett@hosea.com)