

A PRIVATE COLLECTION FROM A CUMBRIAN ESTATE

TUESDAY 13 FEBRUARY 2024 | NEWBURY



DREWEATTS

EST. 1759



A PRIVATE COLLECTION FROM A CUMBRIAN ESTATE

TUESDAY 13 FEBRUARY 2024 | NEWBURY

LOTS 1-266 | 10.30AM

VIEWING

Sunday 11 February: 10am–3pm

Monday 12 February: 10am–4pm

Day of sale: from 8.30am

ENQUIRIES & CONDITION REPORTS

interiors@dreweatts.com

Front cover: Lots 126, 127, 128, 129 & 229

NEWBURY
Donnington Priory, RG14 2JE
+44 (0) 1635 553 553

LONDON
16 Pall Mall, SW1Y 5LU
+44 (0) 20 7839 8880

info@dreweatts.com
dreweatts.com

DREWEATTS
EST. 1759

A GUIDE FOR BUYERS

REGISTRATION AND BIDDING

We advise bidders to register at least 48 hours in advance of the auction as we will need to complete Know Your Client checks on all registrants. We allow commission (or absentee bids), telephone bids, live online bidding, and in person bidding. More information is available in our Terms of Sale at the back of this catalogue, and on our website.

BUYER'S PREMIUM

26% of hammer price up to £20,000 (31.2% including VAT), plus

25% of hammer price from £20,001 up to £500,000 (30% including VAT), plus

20% of hammer price from £500,001 up to £1,000,000 (24% including VAT), plus

12.5% of hammer price in excess of £1,000,000 (15% including VAT)

ADDITIONAL CHARGES AND SYMBOLS

λ - Indicates that this lot may be subject to Droit de Suite (Artist Resale Right) royalty charges.

Y - Indicates that this lot may be subject to CITES regulations when exported.

† - Indicates that VAT is payable by the purchaser at the standard rate of 20% on the hammer price as well as being charged on the buyers' premium.

θ - Indicates that the lot is a zero rated item and therefore subject to buyer's premium of 26% exclusive of VAT (0% VAT).

‡ - Indicates that the lot is being sold whilst subject to temporary importation and that VAT is due at the reduced rate (5%).

Ω - Indicates that the lot has been imported from outside the UK and is liable to the standard rate of Import VAT currently 20% on the hammer price.

β - Indicates that the lot is offered in Bond. This applies to wine. Bidding will be at duty paid prices other than for those lots marked 'IN BOND/β'.

PAYMENT

If you are successful, you will receive an invoice to your registered email address, which will include detailed payment and collection information. If you wish to see this in advance, please visit our website. Items must be paid for in full and Know Your Client checks must be complete before we can release any purchases; first time buyers may also be subject to restrictions on the methods of payment we can accept. Please confirm this with the saleroom prior to collection.

COLLECTIONS, SHIPPING AND STORAGE

Unless otherwise stated below, purchases are available for collection from Dreweatts Donnington Priory salerooms from Monday to Friday (9am-5pm) by appointment only. If you wish to have items shipped to you, please see our list of suggested shippers on our website.

Garden items and smaller objects and pictures: items will remain at Donnington Priory, but please check when booking your collection.

Large items (furniture, mirrors, large works of art, carpets and rugs): items will be removed to commercial storage at Sackville-West Moving & Storing (Andover SP10 3SA) on **Tuesday 20 February** and will be available for collection from **Wednesday 21 February** onwards. Items removed to Sackville West Moving & Storing will be subject to a transfer fee of £20 (plus VAT) and a storage charge of £3 (plus VAT) per lot per part or full day thereafter. These charges will be the sole liability of the purchaser and will be billed directly to them by Sackville-West Moving & Storing. Sackville-West Moving & Storing will provide an additional week's free storage if they are instructed by the purchaser to deliver to them. On payment of all sales and storage costs, items will be available for collection by appointment from Sackville-West Moving & Storing (tel: +44 (0) 2080 909988; email: office@sackvillewest.co.uk).

CONDITIONS OF SALE

Any registration to bid is subject to acceptance of our Auction Terms and Conditions and Privacy Policy. Both are available on our website.

CONDITIONS OF ITEMS

Buyers must satisfy themselves to the condition of any item prior to bidding. Detailed condition reports and additional images are available upon request.

EXPORT OF ITEMS

If you intend to export goods out of the UK, we ask you to satisfy yourself as to whether there is prohibition on exporting goods of that character e.g. if the goods contain prohibited materials such as ivory or they require an Export Licence on the grounds of exceeding a specific age and/or monetary value threshold as set by the Export Licensing Unit. We are happy to make the submission of necessary applications on behalf of our buyers, but we will charge for this service only to cover the costs of our time.

GLOSSARY OF TERMS

Where relevant, for example Picture auctions or Clocks auctions, a glossary of cataloguing terms will be available at the back of our printed catalogues as well as via our website.

SPECIALISTS FOR THIS AUCTION



Ashley Matthews MRICS
Furniture, Clocks, &
Decorative Arts
(Head of Sale)



Lucie Hobbs
Head of Consignments



Christy Chambers
Interiors & Consignments
Administrator



Silas Currie Leigh-Wood
Sculpture & Works of Art



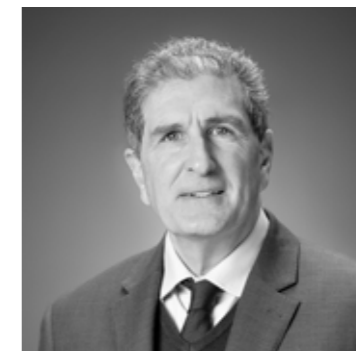
Geoffrey Stafford Charles MRICS
Ceramics & Glass



Daniele Amesso
Old Master Pictures



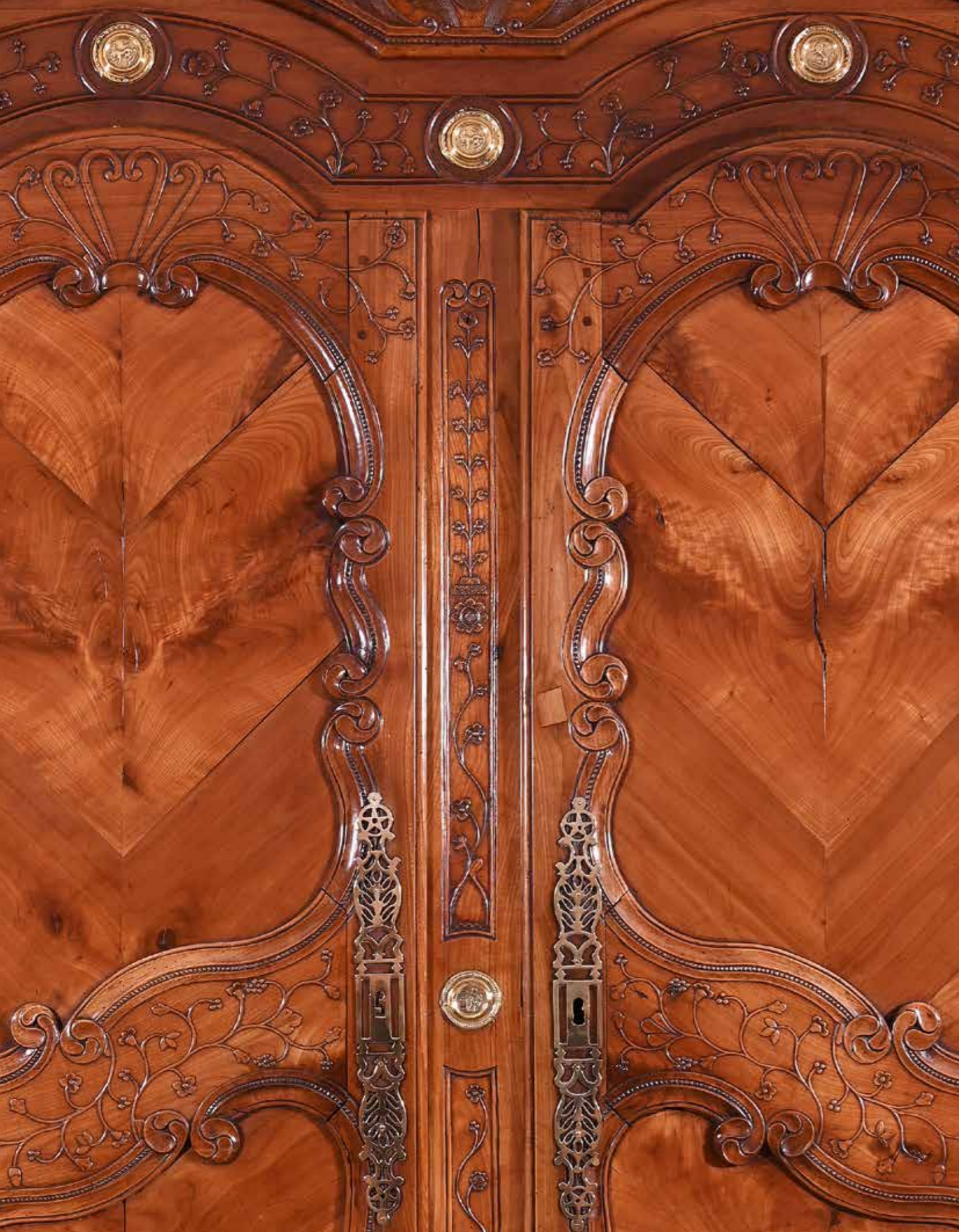
Lucy Darlington MRICS
Old Master Pictures



Mark Newstead
Chinese and Asian Art
(Consultant)



Dr Yingwen Tao
Chinese and Asian Art



“ *The fleeting hour of life of those who love the hills is quickly spent, but the hills are eternal. Always there will be the lonely ridge, the dancing beck, the silent forest; always there will be the exhilaration of the summits. These are for the seeking, and those who seek and find while there is still time will be blessed both in mind and body.* ”

ALFRED WAINWRIGHT



1
A LARGE PAIR OF SAMSON IMARI BALUSTER OCTAGONAL
VASES AND COVERS
MEIJI PERIOD
Decorated with landscape and fan shaped panels, kylin finials
each 97cm high

£400-800

2
AN OAK SETTLE
EARLY 18TH CENTURY
Of long proportion, the six panel back above a long bench seat
and baluster supports
83cm high, 214cm wide, 43cm deep

£400-600



1



2

3
A TABRIZ PART SILK PRAYER RUG
approximately 235cm x 158cm

£500-800



3



4
A JAPANESE IMARI TRIPOD KORO AND COVER
 MEIJI PERIOD
 Decorated bird, hare and floral panels in the usual red blue and gold palette, *kylin* finial
 34cm high

£50-70

4

5
A LARGE JAPANESE IMARI STICK STAND
 MEIJI PERIOD
 Painted with flowers in iron-red with underglaze blue
 60cm high

£120-180



5



6

6
A PAIR OF JAPANESE IMARI PORCELAIN DOUBLE GOURD VASES
 MEIJI PERIOD
 Decorated prunus and hawthorn spray panels in typical red blue and gold palette
 each 46cm high

£400-600

7
A PAIR OF JAPANESE IMARI CHARGERS
 MEIJI PERIOD
 Decorated with fan shaped panels with flowers and foliage
 37cm diameter

Together with a Japanese Imari Dish, Meiji Period, 31cm diameter; Samson porcelain two handled Imari pattern bottle cooler, 18.5cm, and another large Imari charger, 58cm diameter

£200-300



7



8

8
A PAIR JAPANESE OR SAMSON IMARI OCTAGONAL BALUSTER VASES AND COVERS
 19TH CENTURY
 Converted to table lamps, gilt bronze mounts, silk pleated shades
 each 36cm high

£600-800



9

9
A CARVED OAK COFFER
 INCORPORATING 17TH CENTURY ELEMENTS
 The hinged lid enclosing a compartment with a candlebox
 44cm high, 114cm wide, 34cm deep

£300-500



10

10
A JAPANESE IMARI JARDINIÈRE
 MEIJI PERIOD
 Decorated with panels of flowers within
 complex borders
 20cm high

Together with a Japanese Imari
 jardinière, 14.5cm high; a pair of small
 Japanese Imari jardinières, Meiji Period,
 9cm high and a Japanese Imari vase,
 meiji period, 20cm high (5)

£100-150

11
A TABRIZ PART SILK RUG
 approximately 363cm x 255m

£1,000-1,500

11



12



12
**A LARGE CARVED
 AND STAINED
 WOOD FIGURE OF
 A SAINT HOLDING
 AN INFANT**
 SECOND HALF
 20TH CENTURY
 170cm high overall

The figure is very
 similar to a carved
 figure of St Anthony
 in the church of St
 Anthony of Padua in
 Ortisei in Val Gardena.

£800-1,200

12

13



13

13
A PAIR OF JAPANESE IMARI BALUSTER
VASES AND COVERS
MEIJI OR TAISHO PERIOD
Decorated with pavilion and floral panels
each 52cm high

£300-400

14
A CARVED OAK PANEL BACK
ARMCHAIR IN 17TH CENTURY STYLE
PROBABLY INCORPORATING PERIOD
AND LATER ELEMENTS
The back carved with arcade
121cm high

£400-600



14



17

16
A SET OF FOUR CARVED OAK FURNITURE MOUNTS
LATE 17TH CENTURY
Representing the four seasons, each modelled holding an attribute
each 68cm high

£300-500



16

15
A PAIR OF JAPANESE IMARI PORCELAIN CHARGER DISHES
MEIJI PERIOD
Decorated with birds of paradise, in a green, red, blue, black and gold palette
each 47.5cm diameter

£100-150



15

17
A PAIR OF JAPANESE IMARI PORCELAIN
BALUSTER VASES AND COVERS
MEIJI PERIOD
Decorated with temple landscapes in the
usual red blue and gold palette
each 50cm high

£200-300

18
AN OAK AND INLAID COURT CUPBOARD
CIRCA 1700 AND LATER
With lunette and leaf carved frieze above a
cupboard with recessed canted sides and with
a conforming carved frieze drawer
127cm high, 120cm wide, 45cm deep

£400-600



18



19

19
FOLLOWER OF GEORGE MORLAND
OFF TO SERVICE
 Oil on canvas
 71cm x 98cm

£500-800

20
A CHARLES II OAK CREDENCE TABLE
LATE 17TH CENTURY
 The hinged top above a frieze drawer and undertier, and with gateleg action to rear
 80cm high, 90cm wide, 42cm deep

£500-700



20

21
A PAIR OF CARVED OAK PANELS
ANGLO-FLEMISH, 17TH CENTURY
 Of herm form with male figures holding leaves, masked shields below
 51cm high, with later top blocks 59cm high, 10.5cm wide

Together with a carved oak figural panel in 17th century style, depicting a bearded man with arm in a sling, 48cm long

£200-400

22
TWO SIMILAR NAIN PART SILK RUGS
 each approximately 213cm x 130cm

£1,200-1,800



21



22





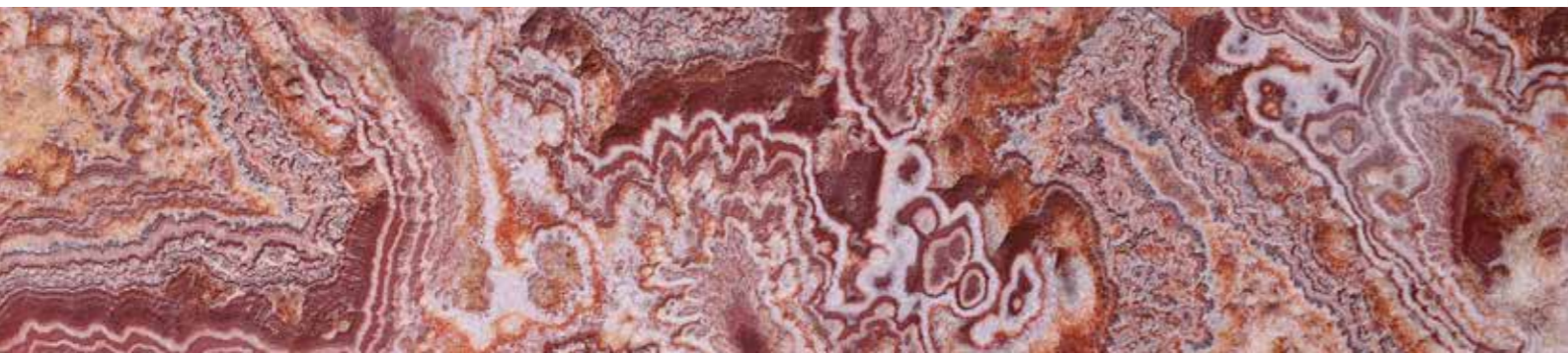
23
A NEAR PAIR OF GILTWOOD CONSOLE TABLES IN GEORGE II STYLE
19TH CENTURY

Each with a later pink variegated alabaster and marble banded top above Greek c-scroll and scallop shell frieze supported by an eagle with outstretched wings on rocky base and plinths with gadrooned edge each 86cm high, 85cm wide, 51cm deep

£5,000-8,000



23



24

24
A GILTWOOD WALL MIRROR IN GEORGE III STYLE
With ho-ho birds to the upper angles above the scrolled pagoda frame
147cm high, 171cm wide

£500-700



25

25
A PAIR OF SILVER PLATED 'GONDOLA' LIGHTS OF
LARGE PROPORTIONS
LATE 19TH OR EARLY 20TH CENTURY
Flame finials above hexagonal tapering bodies, cherub
decorated top frieze, some glass engraved
78cm high

Now mounted on Victorian Gothic style brass wall arms,
20th Century
overall height approximately 88cm, 58cm protuberance

£800-1,200



25

26
FOUR VARIOUS JAPANESE IMARI PORCELAIN BALUSTER
VASES AND COVERS
MEIJI PERIOD
Decorated in the typical red blue and gold palette
smallest 26cm high, largest 42cm high

£200-300



26

27
A QUM SILK RUG
approximately 295cm x 197cm

£2,000-3,000



27



28

28
A SELECTION OF VARIOUS STAFFORDSHIRE BLUE AND WHITE PRINTED POTTERY
 VARIOUS DATES FIRST HALF 19TH CENTURY
 To include; a large Spode 'Tiber' pattern serving dish, 53cm long, a Davenport Pearlware serving dish printed with a Chinese junk, 48cm long, a Staffordshire blue and white printed sauce tureen, cover, stand and ladle, printed with the 'Pashkov House, Moscow pattern', a 'Fallow deer' sauce tureen and cover, and other items of blue and white printed pottery

£300-500



29

29
A GEORGE II YEW GATELEG TABLE
 CIRCA 1730
 74cm high, 113cm wide

£300-500



31

31
A TABRIZ PART SILK RUG
 approximately 202cm x 202cm

£1,000-1,500



30 (two of a set of 10)

30
A HARLEQUIN SET OF TEN WALNUT DINING CHAIRS IN CAROLEAN STYLE
 19TH CENTURY
 To include two armchairs, each chair with a carved cresting rail with central pierced crown suspended by cherubs
 Each with a removable blue upholstered cushion

£800-1,200



32

32
AN OAK FIVE PANEL BACK 'TAVERN' SETTLE
 LATE 18TH CENTURY
 With canopy top above the panel back and enclosed sides, the bench seat above panels incorporating cupboard doors
 164cm high, 192cm wide, 52cm deep

£600-800



33

33
AN EXTENSIVE RILEY'S SEMI CHINA
PART DINNER AND DESSERT
SERVICE

CIRCA 1825
 Printed with the arms of the Draper's Company within a floral border comprising; twelve dinner plates, 25cm diameter, twelve side plates, 19cm diameter, eleven oval moulded dessert plates, 19cm diameter, twelve soup plates, 25cm diameter, four square shaped two handled vegetable tureens and covers, a large well and tree meat dish, 48cm diameter, eight further serving dishes (in sizes), a pair of chestnut baskets and stands, Twin handled footed dessert dish, two pairs of sauce tureens, covers and stands, a two handled pedestal basket. All with printed and impressed marks

£1,000-2,000



34

34
AN OAK DRESSER
COMPRISING ASSOCIATED MID 18TH
CENTURY AND LATER ELEMENTS

The plate rack superstructure with unusual fretwork frieze above the base with drawers and cupboards
 178cm high, 140cm wide, 48cm deep

£300-500





35

35
A PAIR OF DUTCH DELFT CHINOISERIE BALUSTER VASES AND COVERS WITH LION FINIALS
 CIRCA 1900
 Delft style marks
 45cm high overall

£200-300



36

36
AN OAK GATELEG TABLE
 EARLY 18TH CENTURY
 Of small proportion, with frieze drawer to one side
 68cm high, 81cm wide, 82cm deep

£200-300

37
A SELECTION OF LATER BLUE AND WHITE DUTCH DELFT
 LATE 19TH AND 20TH CENTURIES
 Including an armorial jug with hinged cover, 27cm high overall;
 a pair of pilgrim flasks and covers, 39.5cm high, and two
 assorted pairs of vases and covers

£100-200



37

38
A DUTCH DELFT GARNITURE OF THREE VASES
 LATE 19TH CENTURY
 Comprising a baluster vase and cover, and a pair of
 garlic necked vases, all decorated with putti, peacocks
 and horsemen reserved on a floral ground
 The baluster vase and cover, 63cm high, the vases
 each 57cm high

£1,000-1,500



38



39

39
TWO NORWEIGIAN CARVED PEG TANKARDS
 18TH OR 19TH CENTURY
 The first possibly curly birch, lion thumb lift, floral carved lid, leaf feet, 23cm high
 The second stained birch, with lamb thumb lift, rampant lion lid, lion couchant feet,
 22cm high

£500-700

40
AN OAK COURT CUPBOARD
 LATE 17TH CENTURY AND LATER
 The central cupboard flanked
 by carved panels above a base
 with knopped front supports and
 platform pot shelf
 126cm high, 124cm wide,
 43cm deep

£300-500



40



41 (part lot)

41
A PAIR OF DUTCH DELFT BALUSTER VASES AND COVERS
 CIRCA 1900
 Decorated with rustic panels
 Monogrammed HL
 38.5cm high overall

Together with another similar pair, 40cm high overall

£80-120

44
A PAIR OF DUTCH DELFT BALUSTER VASES AND COVERS
 EARLY 20TH CENTURY
 Decorated with panels of flowers
 Monogrammed FC92 /557
 31cm high overall

And another similar smaller pair of vases and covers, 26cm high overall

£100-200



44 (part lot)

42
A SET OF SIX DUTCH DELFT CHINOISERIE BLUE AND WHITE PLATES
 LATE 18TH CENTURY
 Script W mark, 34cm diameter

£200-300



42



45

45
A SPANISH WALNUT SIDE TABLE
 LATE 17TH CENTURY
 With frieze drawer above baluster supports and square section plinth terminating in paw feet at the front
 88cm high, 57cm wide, 32cm deep

£400-600



43

43
A FRENCH CHESTNUT AND POLLARD OAK DRESSER
 EARLY 19TH CENTURY
 With plate-rack superstructure with cupboard doors above the base with drawers and cupboard doors
 218cm high, 148cm wide, 61cm deep

£400-600

46
A PAIR OF DUTCH DELFT BLUE AND WHITE CHINOISERIE BALUSTER VASES AND COVERS
 CIRCA 1900
 18th century style mark J V / 3
 each 42cm high overall

£300-500



46



47

47
A MEISSEN PORCELAIN ALLEGORICAL GROUP 'TRIUMPH OF JUNO'
LATE 19TH CENTURY
Incised 0199, impressed 187, blue crossed swords mark, 22.5cm high

£700-1,000

48
A MEISSEN PORCELAIN TWO-HANDLED PIERCED CENTRE BASKET
LATE 19TH CENTURY
Pierced sides, rams head handles and lion's paw feet, each side with a panel painted with birds, blue crossed swords mark
19cm x 38cm

£300-500



48



49

49
A GEORGE II WALNUT SIDE TABLE
CIRCA 1740
With arrangement of two long drawers above a shaped apron and cabriole legs
71cm high, 75cm wide

£400-600



51

51
A MEISSEN PORCELAIN FIGURE OF EUROPA AND THE BULL
LATE 19TH CENTURY
Incised 2697, blue crossed swords mark
22cm high

£400-600

50
A GERMAN PORCELAIN MODEL OF EUROPA AND THE BULL AFTER THE MEISSEN ORIGINAL
CIRCA 1900 OR LATER
Un-marked, 18.5cm high

£400-600



50

52
A WALNUT BUREAU
A MAZARIN
EARLY 18TH CENTURY AND LATER
The banded and quartersawn top above an arrangement of drawers and knee-hole cupboard door, on baluster turned supports and X-frame
74cm high, 105cm wide, 57cm deep

£700-1,000



52



53

53
A PAIR OF VIENNA-STYLE PORCELAIN
TWIN-HANDLED URNS, COVERS AND
STANDS
LATE 19TH CENTURY
Painted with panels of classical subjects on a
red, blue and gilt ground, blue shield marks
64cm high overall

£800-1,200



54 (set of eight)



54 (set of eight)

54
A HARLEQUIN SET OF EIGHT DERBYSHIRE TYPE
DINING CHAIRS
VARIOUS DATES 18TH AND 19TH CENTURY
Each of typical form with double bar back and drops

£400-600





55

55
A BAROQUE POLYCHROME PAINTED AND CARVED OAK FRAGMENT
POSSIBLY GERMAN, 18TH CENTURY
Modelled as an angel's head with billowing clouds above
43cm high, 33cm wide

£300-500



56

56
A TABRIZ PART SILK RUG
approximately 390cm diameter

£1,500-2,500



57

57
A LARGE PAIR OF WROUGHT IRON FIRE DOGS IN
THE 17TH CENTURY STYLE
19TH CENTURY
Of large and impressive proportions, each with cresset
basket above a further cresset arm
113cm high

£500-800



58

58
A CONTINENTAL CARVED ASH FIGURE
OF THE MADONNA AND CHILD
LATE 16TH/EARLY 17TH CENTURY
The Virgin modelled standing holding the
Christ Child and a bunch of grapes
82cm high

£800-1,200



59

59
A CARVED AND POLYCHROME
PAINTED MODEL OF A MONK,
POSSIBLY ST. FRANCIS OF ASSISI
19TH CENTURY
Modelled standing, with bald pate and
robed, his arms aloft and outstretched,
decoration refreshed
71cm high

£400-600



60

60
A CARVED SOFTWOOD MODEL
OF A BISHOP
POSSIBLY SPANISH, 19TH CENTURY
His Excellency portrayed standing with open
arms, wearing mitre, cassock, and mantle
139cm high

£400-600



61

61
A CARVED OAK ARMORIAL PANEL IN BAROQUE TASTE
19TH CENTURY
The cartouche form panel scumbled to simulate ash and with a sash band with brooches, within a shield surround with flanking supporting putti
94cm high, 67cm wide

£300-500

62
A PAIR OF WROUGHT IRON CANDLESTICKS IN THE 17TH CENTURY STYLE
20TH CENTURY
Of large and impressive proportions
159cm high

£600-800

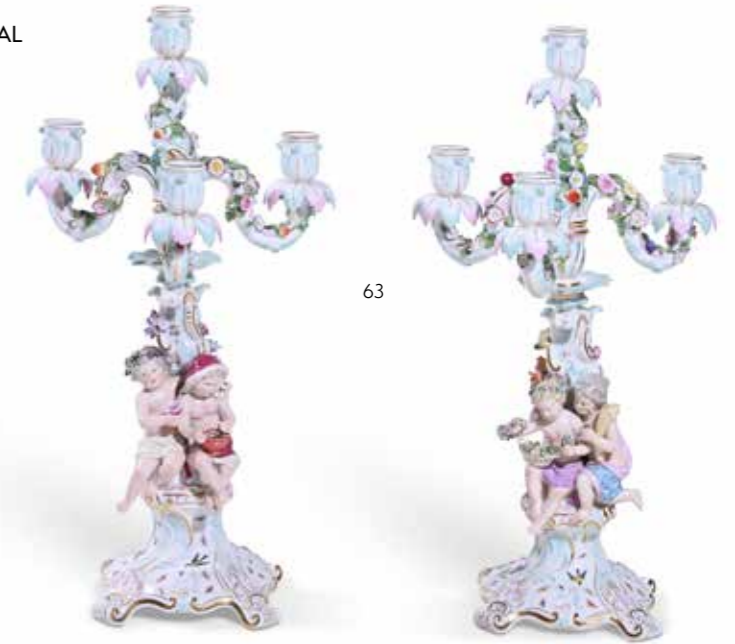


62



63
A PAIR OF MEISSEN PORCELAIN FLOWER-ENCRUSTED FIGURAL CANDELABRA FROM A SERIES OF THE FOUR SEASONS
LATE 19TH CENTURY
Emblematic of Winter and Spring, each with three arms and four lights
blue crossed swords mark
49cm high

£600-800



63



64

64
A GILTWOOD ALTAR CANDLESTICK STANDARD LAMP
18TH CENTURY AND LATER ADAPTED TO ELECTRICITY
156cm high overall including shade

£300-500

65
AN OAK THREE TIER BUFFET
LATE 17TH CENTURY AND LATER
The top two tiers incorporating frieze drawers, on carved acanthus and gadrooned substantial bulbous uprights and block feet
118cm high, 91cm wide, 40cm deep

£400-600



65



66

66
A PAIR OF PARIS PORCELAIN
CUSHION-SHAPED SCENT BOTTLES
AND STOPPERS
THIRD QUARTER 19TH CENTURY
Un-marked, 14.5cm x 15cm x 15cm

£150-250



67

67
A PAIR OF BERLIN (KPM) PORCELAIN GILT-METAL MOUNTED
TWO-HANDLED BALUSTER VASES
MID 19TH CENTURY

Decorated with floral sprays and insects, gilt-metal
entwined foliate mounts of two-handled form,
printed blue and red factory marks, orb and imperial eagle
24cm high

£300-500



68

68
A VIENNA-STYLE
PORCELAIN RED-GROUND,
GILT AND 'JEWELLED' VASE
AND COVER
LATE 19TH CENTURY
Painted with a classical scene
titled to the underside of the
base, *Alexander U Apelles*,
blue shield mark
27.5cm high

Together with a pair of
continental porcelain figural
candlesticks with pseudo-
chelsea marks and two french
pottery sevres-style boxes

£150-250



69

69
A CARVED OAK PANEL WITH PORTRAIT RELIEF OF QUEEN
ELIZABETH I
EARLY 20TH CENTURY
65cm high, 44cm wide

£200-300

70 Y
A LARGE ROSEWOOD LIBRARY MAGNIFYING OR GALLERY GLASS
EARLY 20TH CENTURY
Of large and impressive proportions, with brass collar and mount
54.5cm long overall, 26cm wide

£300-500



70

71
A GEORGE III OAK AND WALNUT CROSS
BANDED DRESSER BASE
CIRCA 1760
With arrangement of three frieze drawers
78cm high, 242cm wide, 51cm deep

£500-800



71



72

72
ATTRIBUTED TO LOUIS DE CAULLERY (FLEMISH/FRENCH 1582-1621)
ELEGANT PARTY DINING WITH MUSICIANS PLAYING MADRIGALS
Oil on panel
50 x 32cm (19½ x 12½ in.)

Provenance:
Purchased from David Wade Fine Art Ltd
Christie's, Amsterdam, 5 November 2003, lot 32

£3,000-5,000



73

73
A CARVED AND POLYCHROME FIGURE OF A FEMALE SAINT
NORTHERN EUROPEAN, 18TH OR 19TH CENTURY
Depicted in long flowing robes holding a book in her left hand, lacking instrument
to her right hand- possibly Saint Catherine, polychrome refreshed
60.5cm high

£400-600



74

74
AN IBERIAN WALNUT AND LEATHER UPHOLSTERED SIDE CHAIR
LATE 11TH CENTURY
With brass studwork
132cm high

£100-150





75

75
JAMES CHARLES WARD, R.B.A (BRITISH FL. 1830-1875)
TWO LANDSCAPES OF MONSALDALE AND DOVEDALE
Oil on board, a pair
Both signed and dated '1854' (lower right)
each 69 x 89cm (27 x 35 in.) (2)

£200-300

76
A CARVED WALNUT AND UPHOLSTERED SOFA IN LATE 17TH
CENTURY STYLE
FIRST HALF 20TH CENTURY
131cm high, 220cm wide, 85cm deep

£400-600



76

77

TWO PAIRS OF CARVED OAK FIGURAL MOUNTS
One pair late 17th century modelled as female figures, 34cm high
Other pair 17th century style, as herm pilasters, 67cm high

£250-350



77



78

78

AN IBERIAN WALNUT AND LEATHER UPHOLSTERED SIDE CHAIR
LATE 17TH CENTURY
With brass studwork
143cm high

£100-150

79

A TABRIZ RUG
approximately 281cm x 178cm

£1,200-1,800



79



80

80
A PAIR OF PAINTED TINWARE TABLE LAMPS
IN THE FORM OF TULIP VASES
20TH CENTURY, IN THE MANNER OF DUTCH
DELFT EXAMPLES
Of tiered square tapering form
70cm high including fittings

£300-500



81

81
AN OAK CRICKET TABLE
CIRCA 1700 AND LATER
With circular top above a triform base with two
under tiers on baluster turned supports
76cm wide, 79cm deep

£300-500



82

82
A NAIN PART SILK RUG
approximately 198cm x 129cm

£600-800

83
A OAK AND IRON BOUND RENT OR POOR BOX
LATE 16TH OR EARLY 17TH CENTURY
The hinged lid with coin slot, strap locks, the interior of the lid
with old paper label
17cm high, 33cm wide, 21cm deep

Provenance:
Paper label stating this was from the estate of Viscount Wenman,
Thame Park, Thame, Oxfordshire

£800-1,200



83



84

84
A LARGE TURNED FRUITWOOD BOWL,
POSSIBLY PUNCH OR WASSAIL
ANGLO-COLONIAL, 18TH CENTURY
With carved triangulated band,
on a spread foot
23cm high, 39cm diameter

£600-800

85
A GEORGE III OAK SIDE TABLE
CIRCA 1750
With arrangement of three drawers above
a carved apron and cabriole legs
71cm high, 75cm wide

£300-500



85



86



87



88



89



90



91

86
A NORTH EUROPEAN CARVED WALNUT FIGURE OF A WOMAN
LATE 17TH OR EARLY 18TH CENTURY
Carved in the round, robed and holding a book
97cm high

£500-800

87
A CARVED PAINTED AND GILTWOOD FIGURE OF A MONK
19TH CENTURY
Portrayed with tonsured hair and standing wearing long robes
128cm high

£600-800

88
A POLYCHROME CARVED FIGURE OF ST MICHAEL
NORTH ITALIAN, 18TH CENTURY
In medieval armour and red cloak crushing a demon underfoot, on a square plinth base, heightened in gilt
149cm high

£1,000-1,500

89
A CARVED POLYCHROME FIGURE OF A KING
DATED 1728
With mostly original but worn polychrome and gilt decoration throughout, depicted crowned and holding an orb in his left hand, illegible inscription to the octagonal stepped plinth
77cm high, base 24cm wide

£800-1,200

90
A CARVED AND POLYCHROME FIGURE OF AN APOSTLE OR CHRIST
CONTINENTAL, 19TH CENTURY AND LATER
In long robes with one hand raised to hold a pole/spear, redecorated
58cm high

£500-700

91
A CARVED POLYCHROME FIGURE OF A SAINT
POSSIBLY MID 16TH CENTURY
Portrayed standing and clad in armour, of hollowed flatback form
81cm high

£800-1,200



92
AUGUSTE XAVIER LEPRINCE (FRENCH 1799-1826)
SHEPHERD AND FLOCK
Signed and dated '1823' (lower right)
Oil on canvas
18cm x 23cm (7 1/8 x 9 in.)

Provenance:
Purchased from David Wade Fine Art Ltd

£1,000-1,500

92

93
A CARVED WALNUT PRICKET CANDLESTICK IN 17TH CENTURY TASTE
19TH CENTURY AND LATER FITTED FOR ELECTRICITY
126cm high excluding fitments, 160cm high overall including shade

£300-500



94

94
A CONTINENTAL WALNUT AND UPHOLSTERED ARMCHAIR
IN 18TH CENTURY STYLE, 19TH CENTURY
Of large 'throne' proportion
146cm high, 78cm wide, 74cm deep

£300-500



93





95

95
A CARVED AND POLYCHROME
PRANCING CHERUB
POSSIBLY GERMAN, 18TH CENTURY
52cm high

£300-500

96
A CARVED AND POLYCHROME FIGURE
OF A STANDING CHERUB
POSSIBLY GERMAN, 18TH CENTURY
With white drapery encircling his body
64.5cm high

£500-700

97
AN OAK PLANK COFFER
LATE 17TH CENTURY
56cm high, 116cm wide, 44cm deep

£300-500



97



96



99

99
A TABRIZ PART SILK RUG
approximately 134cm x 76cm

£400-600

100
A FRENCH PROVINCIAL OAK SIDE TABLE
EARLY 18TH CENTURY
With oval top above a frieze drawer and
turned baluster supports joined by an
H-stretcher
69cm high, 97cm wide, 68cm deep

£250-350



100



98

98
A DUTCH DELFT BLUE AND WHITE
CHINOISERIE OCTAGONAL SECTION
OVOID VASE
THE VASE 18TH CENTURY, LATER ADAPTED
AS A LAMP AND FITTED FOR ELECTRICITY
45.5cm high overall including fittings

£150-250



101

101
A PAIR OF GILT METAL AND RED MARBLE
THREE BRANCH TABLE LIGHTS IN 19TH
CENTURY STYLE
20TH CENTURY
Each with a *bouillotte* type shade above the
arms, vase-form stem and circular base
78cm high

£400-600



102

102
A CARVED WHITE PAINTED FIGURE
OF A CHILD
POSSIBLY SPANISH, 18TH CENTURY
Modelled nude and holding a drape,
on a later base
32cm high

£300-500



103

103
A CHARLES II OAK CHEST OF DRAWERS
LATE 17TH CENTURY
88cm high, 94cm wide, 54cm deep

£300-500

104
ENGLISH SCHOOL (19TH CENTURY)
PORTRAIT OF A LADY IN A BLACK DRESS
WITH A CHILD
Oil on canvas
125 x 97cm (49 x 38 in.)

£600-800



104



105

105
A PAIR OF PAINTED AND PARCEL
GILTWOOD ALTAR CANDLESTICKS
20TH CENTURY
Each with pricket above columnar supports
and square section baluster bases
63cm high

£400-600

106
A WILLIAM AND MARY WALNUT BUREAU
CIRCA 1695
The fall enclosing a fitted interior with pigeon
holes and compartments above a central well,
and with arrangement of two short and three
long drawers and bun feet
81cm high, 80cm wide, 41cm deep

£400-600



106



107

107
AFTER GAUDEZ AND A MOREAU, A LARGE BRONZE GROUP
OF A MOTHER AND CHILD
FRENCH, LATE 19TH OR EARLY 20TH CENTURY
Signed to the cast Gaudetz, A Moreau, and with Societe de Bronzes
de Paris foundry mark to the side, on a circular red marble base
bronze 68cm high, 73cm high overall

£600-1,000



108

108
MATHURIN MOREAU (FRENCH 1822-1912) A BRONZE FIGURE
OF THE WATER CARRIER
LATE 19TH OR EARLY 20TH CENTURY
Signed to the cast MOREAU, MATH, red marble plinth
bronze 61cm high, 69cm high overall

£800-1,200



109

109
A FLEMISH BUCOLIC VERDURE TAPESTRY FRAGMENT
EARLY 18TH CENTURY
With figures dancing beneath a tree with seated piper playing
212 x 171cm

£1,000-1,500



110

110
A MAHOGANY BREAKFRONT LIBRARY BOOKCASE IN GEORGE III STYLE
 19TH CENTURY

Of breakfront outline, the lancet moulded glazed doors enclosing shelves above further panel doors enclosing further shelves
 233cm high, 242cm wide, 49cm deep

£1,000-1,500

111
FRENCH SCHOOL (19TH CENTURY)
YOUNG WOMAN IN A PURPLE DRESS
 Pastel on paper, oval
 70 x 57cm (27½ x 22¼ in.)

£800-1,200



111



112

112
A PAIR OF BRONZE AND ORMOLU
CANDLESTICKS AFTER THOMAS ABBOTT
 MID 19TH CENTURY

With patinated storks with coronets to their necks, perched on naturalistic ormolu bases, with stamped sun marks
 40cm high, bases 15cm wide

£600-800



113

113
A MAHOGANY TEA TABLE
 CIRCA 1740 AND LATER

Of small proportion, with hinged top with projecting corners above a small frieze drawer
 72cm high, 66cm wide, 33cm deep

£250-350



114

114
A PAIR OF GILT METAL TWIN LIGHT TABLE LIGHTS IN THE FRENCH EARLY 19TH CENTURY MANNER OF RECENT MANUFACTURE

Each with a bouillotte style toleware shade above the twin arms and oval base
51cm high

£300-500

115
A GEORGE II OAK SIDE TABLE
CIRCA 1740
With three frieze drawers
72cm high, 82cm wide, 51cm deep

£300-500



115

116
AN AUBUSSON STYLE TAPESTRY RUG
approximately 383cm x 276cm

£400-600

116



117
A GROUP OF THREE CARVED OAK FLATBACK ALLEGORICAL FIGURES

18TH CENTURY
Depicting the Seasons, each modelled holding an attribute
33cm high and smallest 31cm

And a carved figural fragment
18th century and later
Associated head on softwood body, ebonised later base
45.5cm high overall

£400-600



117

118
TWO NAIVE CARVED AND PAINTED WOOD FIGURES
POSSIBLY ASIAN, 19TH CENTURY

First of male form, clasped hands, 38.5cm high
Second of female form with articulated 'whirligig' arms, 30.5cm high

£300-500



118



119

119
A LOUIS PHILIPPE MAHOGANY AND INLAID CENTRE TABLE
CIRCA 1840

With dished fossilised grey marble top above a faceted baluster stem and triform base
69cm high, 90cm diameter

£300-500



120

120
FRENCH SCHOOL (19TH CENTURY)
PORTRAIT OF A LADY LOOKING AT A MIRROR WITH A
DOG ON HER LAP
Pastel on paper, oval
Indistinctly signed (centre right)
64.5 x 52.5cm (25¼ x 20½ in.)

£800-1,200



121

121
A GILTWOOD AND COMPOSITION WALL BRACKET
CIRCA 1870
The velvet covered platform above swagged and scrolled tapering support
43cm high, the platform 42cm wide, 27cm deep

Together with a further painted wall bracket in 18th century taste,
39cm high, 50cm wide, 26cm deep

£200-300

122 Y
A FRENCH KINGWOOD AND MARQUETRY PETIT COMMUNE IN
LOUIS XV STYLE
LATE 19TH CENTURY
The marble top above an arrangement of five drawers
82cm high, 39cm wide, 24cm deep

£200-300



122



123

123
A DUTCH BRASS AND REPOUSSÉ LOG BUCKET
LATE 19TH CENTURY
Of cauldron form with flanking ring handles
53cm high, 35cm diameter at the aperture

£80-120



124

124
A CARVED OAK CHOPPING BOARD/BLOCK
LATE 18TH OR EARLY 19TH CENTURY
With dished centre to the shaped rectangular
block, and with projecting handle
44cm long overall

£300-500



125

125
A COLLECTION OF VARIOUS FIRE
FURNITURE
LATE 19TH AND EARLY
20TH CENTURY
To include a brass coal
bucket, the urn finial
above a spreading
lid and 'acorn' body,
on three supports,
68cm high, a pair of copper
and brass andirons, 28cm high,
and a set of three fire tools, the poker,
69cm long

£150-250



126

126
A WALNUT AND UPHOLSTERED
ARMCHAIR IN LATE 17TH CENTURY STYLE
EARLY 20TH CENTURY
On Braganza feet
118cm high

Together with an associated small footstool in
matching upholstery, 22cm high, 32cm wide,
26cm deep

£400-600

127
A GERMAN PORCELAIN FIGURAL GROUP IN MEISSEN STYLE
LATE 19TH CENTURY
Meissen style mark
41cm high

£600-800



127



128

128 Y
A REGENCY ROSEWOOD AND GILT METAL MOUNTED
BOOKCASE IN EGYPTIAN REVIVAL TASTE
CIRCA 1820
Of narrow proportion, with two drawers above a shelf
97cm high, 48cm wide, 31cm deep

£300-500

129
A VICTORIAN WALNUT AND BUTTON
UPHOLSTERED CENTRE STOOL
CIRCA 1870
40cm high, 95cm wide, 68cm deep

£200-300



129



130

130 λ
KURT MEYER EBERHARDT (GERMAN 1895-1977)
STUDY OF A PEKINESE DOG
Watercolour and bodycolour on paper
Signed and dated 'Vienna 25/11/37' (lower right)
42 x 62cm (16½ x 24¼ in.)

£200-400



131

131 λ
KURT MEYER EBERHARDT (GERMAN 1895-1977)
STUDY OF A PEKINESE DOG
Watercolour and bodycolour on paper
Signed (lower right)
49 x 57cm (19¼ x 22¼ in.)

£200-300



132

132
A BLACK LACQUER AND PARCEL GILT KNEEHOLE DESK IN GEORGE II STYLE
20TH CENTURY
With arrangement of drawers around the kneehole and cupboard
78cm high, 89cm wide, 49cm deep

Together with a giltwood and velvet upholstered stool, 47cm high

£300-500



134



133

133
A PAIR OF MEISSEN PORCELAIN 'MAYFLOWER' ENCRUSTED VASES
LATE 19TH CENTURY
Almost certainly outside decorated, each with twin swan necked handles
Crossed swords mark in underglaze blue
each 27.5cm high

£300-500

134
A GEORGE III ROSEWOOD, SATINWOOD BANDED, AND STRING INLAID SOFA TABLE
CIRCA 1790
With Two frieze drawers
71cm high, 147cm wide (open), 60cm deep

£300-500



135

135
A PAIR OF WHITE PAINTED AND PINK UPHOLSTERED ARMCHAIRS IN FRENCH TASTE
20TH CENTURY
each 100cm high

£400-600



136
A BLACK LACQUER AND PARCEL GILT WALL MIRROR IN GEORGE II STYLE
20TH CENTURY
140cm high, 75cm wide

£200-300

136



137

137
A PAIR OF PAINTED TOLEWARE
HEXAGONAL TABLE LAMPS
20TH CENTURY, IN THE MANNER
OF DELFT POTTERY EXAMPLES
each 72cm high including shades

£200-300

138
AN EDWARDIAN SATINWOOD
AND MAHOGANY CROSSBANDED
BONHEUR DU JOUR
CIRCA 1905
88cm high, 91cm wide, 49cm deep

£300-500



138

139 Y
FRENCH SCHOOL (18TH CENTURY)
A PORTRAIT OF A WOMAN, BELIEVED TO
BE MADAME DU MAINE (1676 - 1753)
Oil on canvas
39 x 31cm (15¼ x 12 in.)
in a tortoiseshell frame

£1,000-1,500

140
A BLACK LACQUERED AND PARCEL
GILT TABLE LAMP
20TH CENTURY
Decorated in Chinoiserie taste with
exterior scenes
40cm high excluding fitment

Together with a dressing mirror in similar
taste, of recent manufacture, 55cm high,
44cm wide

£200-300



140



139

141
A BLACK PAINTED AND PARCEL GILT
LOW CENTRE TABLE IN 18TH CENTURY
STYLE
OF RECENT MANUFACTURE
With a pair of blind frieze drawers above
columnar supports and shaped X-frame base
51cm high, 123cm wide, 62cm deep

£300-500



141



142

142 Y
 A MAHOGANY AND SATINWOOD, MARQUETRY INLAID DISPLAY CABINET IN GEORGE III STYLE
 CIRCA 1890 BY EDWARDS AND ROBERTS
 With ivory inlaid details throughout, the glazed top enclosing two shelves, the base with arrangement of three drawers, the top drawer stamped EDWARDS & ROBERTS
 229cm high, 145cm wide, 45cm deep

Please note: Dreweatts have applied for a de minimis exemption certificate for this lot, ref: 8N1QJBQ2.

£700-1,000



143

143
 AN ENGLISH PORCELAIN PINK GROUND AND GILT DESSERT SERVICE
 RETAILED BY DANIELL, WIGMORE STREET, LONDON
 POSSIBLY COALPORT, MID 19TH CENTURY
 Comprising; Twelve dessert plates, 24cm and five comports (in various sizes)
 with puce retailers marks

£200-300



144

144
 A TABRIZ SUPERFINE WOOL AND MIXED SILK PILE CIRCULAR RUG
 approximately 200cm diameter

£500-800



145

145
 A PAIR OF GILTWOOD AND GREEN FLORAL
 UPHOLSTERED ARMCHAIRS IN LOUIS XVI STYLE
 CIRCA 1900
 111cm high

£300-500



146

146
A CANTONESE CHESTNUT BASKET AND STAND
19TH CENTURY

Pierced sides, decorated with figure and floral panels,
the basket 20cm wide

Together with a cantonese square dish, 24cm square

£80-120



147

147
A CANTONESE ORMOLU MOUNTED CENTRE BASKET
19TH CENTURY

Decorated with figures and floral panels
30cm high, the bowl 25cm diameter

£300-500



150

150
A PAIR OF CANTONESE VASES AND
COVERS
19TH CENTURY

Decorated with a scene of a warriors or a
warrior seated surrounded by attendants,
lion mask and ring handles and Buddhist lion
finials
each 49cm high

£300-500



151
A CANTONESE ENAMELLED VASE
19TH CENTURY

Decorated with alternating figure and floral
panels in a mixed *famille verte* and *famille
rose* palette
later ormolu mounts
58cm high

£500-700



149

149
A LARGE CANTONESE PUNCH BOWL
CIRCA 1830-1850

Decorated with panels of figures with borders
of flowers butterflies and precious objects
52cm diameter

£400-600



148

148
A PAIR OF CANTONESE PORCELAIN VASES
19TH CENTURY

Ormolu mounts, later fitted as table lamps
the vases approximately 29cm high, 45cm high
overall excluding fittings

£150-250



151



152

152
A CANTONESE JUG AND COVER
EARLY 19TH CENTURY
Entwined handle, decorated with a continuous scene of figures in a garden and floral and butterfly borders
25cm high
£200-300



153

153
A CANTONESE HEXAGONAL GARDEN SEAT
19TH CENTURY
Decorated with panels of ladies in a terraced garden within floral borders
47cm high
£400-600



154

154
A LARGE CANTONESE FLOOR VASE
19TH CENTURY
Decorated with panels of figures at gathering between floral and gilt borders, with *chilong* to the shoulders and facing Buddhistic lion handles
89cm high
£300-500



156

156
A CANTONESE PORCELAIN PUNCH BOWL
EARLY 19TH CENTURY
Decorated with mandarin figure and floral panels in a mixed *famille verte* and *famille rose* palette, gilded bird and insect border
40cm diameter
£150-250



155

155
A PAIR OF CANTONESE VASES
19TH CENTURY
Painted with alternating panels of figures and birds and butterflies in branches
each 63cm high
£300-500



157

157
A CANTONESE EXPORT PORCELAIN ORMOLU MOUNTED TABLE CENTRE BASKET FORMED FROM A PUNCH BOWL
EARLY 19TH CENTURY
European ormolu rococo mounts, decorated with mandarin figure and floral panels in a mixed *famille verte* and *famille rose* palette, gilded bird and insect border
34cm high, the bowl 29cm diameter
£150-250



158



159
A WALNUT AND UPHOLSTERED SOFA IN GEORGE III STYLE
MID 20TH CENTURY
84cm high, 208cm wide, 81cm deep
£400-600

158
FRANZ VANSEVERDONCK (BELGIAN 1809-1889)
HORSE AND SHEEP ON GRASSY HUMMOCKS
Oil on panel, a pair
Signed and dated '1888' (lower right)
17 x 25cm (6 7/8 x 9 7/8 in.) (2)
£300-500



159

160
A GILT METAL MANTEL CLOCK IN FRENCH
EMPIRE STYLE
SECOND HALF 19TH CENTURY
With eight-day bell striking movement, the case
surmounted by a Turk on horseback above a
rockwork base incorporating the drum movement,
on a stepped marble base and bracket feet
57cm high
£600-800



161

161
A PAIR OF CHINESE STYLE
IRONSTONE VASES AND COVERS
Ormolu rams head mounts, cut down
and mounted as table lamps
each 37cm high plus fittings
£200-300



160

162
AN OAK DRESSER BASE
MID 18TH CENTURY
The drawers with mitre-moulded fronts and with a pair of
conforming cupboard doors
87cm high, 183cm wide, 47cm deep
£700-1,000



162



163
 A CARVED WALNUT AND PINK STRIPE
 UPHOLSTERED WING ARMCHAIR
 IN 18TH CENTURY STYLE, EARLY 20TH CENTURY
 145cm high, 91cm wide, 80cm deep

£300-500

163



164

164
 A PAIR OF CREAM PAINTED AND PARCEL
 GILT WASTE PAPER BASKETS
 MODERN
 Of square section tapering form
 30cm high

Together with a mottled painted circular
 section waste paper basket, 28cm high

£150-250



165

165
 A PAIR OF POTTERY LAMP BASES IN THE
 MANNER OF NINETEENTH CENTURY
 FRENCH FAIENCE
 MODERN
 Painted with rustic scenes, 63cm high
 including fitting

£300-500

166
 A SOUTH GERMAN WALNUT AND
 PARCEL GILT COMMODE
 SECOND HALF 18TH CENTURY
 Of *arc en arbalete* outline, with
 arrangement of three drawers flanked by
 carved scroll work canted corners and
 above rocaille scroll apron on squat
 cabriole legs and inward scroll feet
 82cm high, 106cm wide, 60cm deep

£2,000-3,000



166



167

167
A FRENCH GILTWOOD WALL MIRROR IN TRUMEAU STYLE
LATE 19TH OR EARLY 20TH CENTURY
With oval painting of figures in a landscape above the shaped rectangular plate
210cm high, 97cm wide

£300-500



168

168
A PAIR OF PARIS PORCELAIN (NAST) TWO-HANDLED EMPIRE-STYLE URNS
CIRCA 1820
Cislée gilt decoration on a matt-blue ground, Etruscan head medallion handles, script mark *Nast a Paris*
40.5cm high

£1,000-1,500

169
A FRENCH KINGWOOD AND PARQUETRY COMMODE IN LOUIS XVI STYLE
LATE 19TH CENTURY, BY MAISON KRIEGER, PARIS
The marble top above a frieze drawer and pair of doors enclosing a shelf
Stamped to interior, the rear, and the lock plate
86cm high, 76cm wide, 41cm deep

£500-800



169

170
A PAIR OF ORMOLU AND PORCELAIN THREE LIGHT CANDELABRA ATTRIBUTED TO LOUIS CONSTANT SEVRIN, FRENCH, LATE 19TH CENTURY
With *bleu Celeste* leaf moulded stems, each stamped variously LC
each 51.5cm high

£800-1,200



170

171
A GILTWOOD AND UPHOLSTERED TUB ARMCHAIR IN LOUIS XVI STYLE
EARLY 20TH CENTURY
81cm high

£200-300



171

172
A FRENCH WALNUT AND MARQUETRY INLAID BONHEUR DU JOUR IN LOUIS XVI STYLE
LATE 19TH CENTURY
122cm high, 75cm wide, 45cm deep

£300-500



172



173

173
A POLYCHROME PAINTED TABLE LAMP
 20TH CENTURY
 In the form of a 'Blackamoor' stood on the prow of a gondola, fitted for electricity
 74cm high overall

£200-300

174
A PAIR OF POLYCHROME PAINTED AND GILT TORCHERS IN VENETIAN TASTE
 20TH CENTURY
 Each modelled as a 'Blackamoor' stood atop a pedestal base
 171cm high

£700-1,000



174

175
CIRCLE OF ENOCH SEEMAN (ENGLISH CIRCA 1686-1745)
POITAIT OF SIR FRANCIS SEYMOUR AS A BOY
 Oil on Canvas
 49 x 39.5cm (19¼ x 15½ in.)

Provenance:
 Anonymous sale, Christie's, 19 January 1945, lot 34
 Anonymous sale, Crewkerne, Somerset, 24 April 2009, lot 1947

£600-800



175



176

176
AN ITALIAN CARVED WALNUT OPEN ARMCHAIR, IN THE MANNER OF ANDREA BRUSTOLON
 19TH CENTURY

The rectangular upholstered back and stuffer seat with profusely carved scrolling arm supports adorned with reclining cherubs amongst floral clusters and on a similarly carved stretchered base
 129cm high, 94cm wide

£2,500-3,500



177
A CONTINENTAL PATINATED METAL SUIT OF ARMOUR
EARLY 20TH CENTURY
Presented standing on an internal wooden frame and atop a 'mosaic tiled' base
The armour 177cm high, 204cm high overall

£1,500-2,500

177



179

178
A PAIR OF SEVRES-STYLE TURQUOISE-GROUND, 'JEWELLED' AND GILT PORCELAIN URNS AND COVERS

LATE 19TH CENTURY
Decorated with fete gallante panels on a jewelled and gilt bleu Celeste ground
Sevres-style marks
26cm high overall

£200-300



178



180

179
AN ANIMALIER BRONZE OF A PARROT ON A TREE STUMP
POSSIBLY AUSTRIAN, LATE 19TH CENTURY
Apparently unmarked
19cm high

£300-500

180
A PAIR OF ITALIAN WALNUT HALL CHAIRS
LATE 19TH CENTURY
113cm high, 40cm wide, 44cm deep

£300-500





181

181
A CARVED OAK AND ASH HERALDIC
PANEL
19TH CENTURY
The mantel with coroneted helmet and
visor above central cartouche flanked by
supporting gryphons
91cm high, 102cm wide

£300-500



182

182
A FRENCH SMALL BRONZE AND GILT
BRONZE FIGURE OF A MOTHER AND
CHILD
SECOND HALF 19TH CENTURY
Probably formerly a clock surmount,
apparently unmarked
16cm high

£200-400

183
A TABRIZ PART SILK RUG
approximately 259cm x 161cm

£1,000-1,500



183



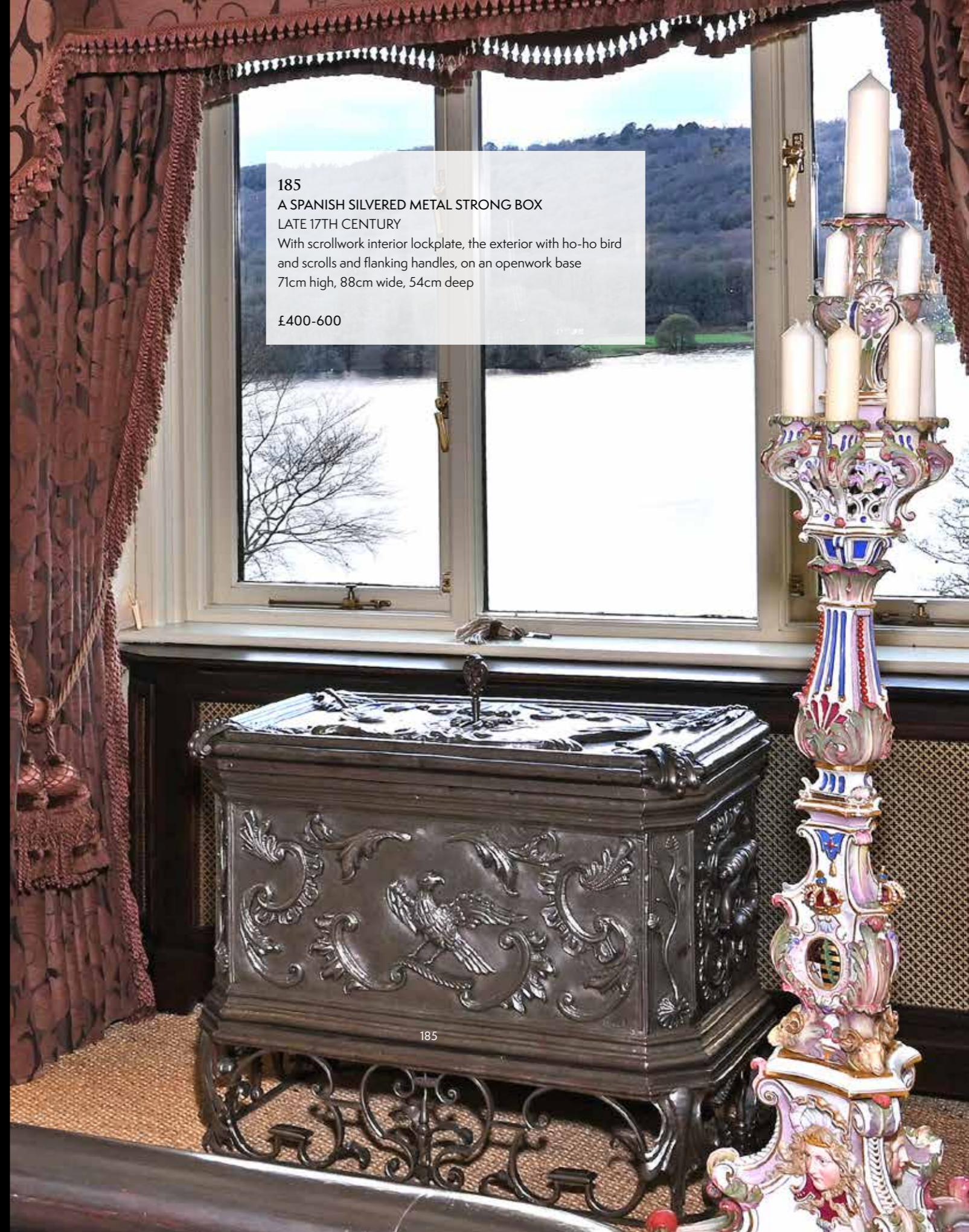


184
A PAIR OF MEISSEN PORCELAIN
FLOOR STANDING CANDELABRA
19TH CENTURY

Of large and impressive proportion, after a pair made for Augustus the Strong, Elector of Saxony, tripod bases on scroll supports moulded with mask heads, and with the Coat of Arms and Monograms of Augustus to all sides, surmounted by coronets, each holding ten candles
Crossed swords mark in underglaze blue
150cm high

£4,000-6,000

184



185
A SPANISH SILVERED METAL STRONG BOX
LATE 17TH CENTURY
With scrollwork interior lockplate, the exterior with ho-ho bird and scrolls and flanking handles, on an openwork base
71cm high, 88cm wide, 54cm deep

£400-600

185



186



186
A CARVED OAK PANEL
LATE 17TH CENTURY
With female figure in ornate niche frame
45cm high, 39cm wide

Together with a carved oak panel, 19TH CENTURY,
cherub in drapery, 38cm high, 22cm wide

£400-600

187
A SILVERED WOOD PRICKET CANDLESTICK
18TH CENTURY AND LATER CONVERTED TO ELECTRICITY
107cm high

£200-300



187



188

188
A PAINTED AND LEATHER BOUND FOUR
FOLD ROOM SCREEN
LATE 19TH CENTURY
Painted with a rural exterior scene
each panel 175cm high, 51cm wide

£300-500

189
ROSENTHAL FOR VERSACE: A 'MEDUSA BLUE' CENDRIER
MODERN
Printed marks to base, 21.5cm; and another modern French porcelain
rectangular cendrier for Hermes Paris, 16cm x 19.5cm

£120-180



189

190
A PAIR OF RED PAINTED AND PARCEL GILT TOLE PEINTE
WASTE PAPER BASKETS
MODERN
Of cylindrical tapering form
35cm high

Together with a pair of tissue box covers en-suite, 12cm high, 12cm
wide, and a set of three painted tole armorial shields; for Pocklington
(see of Salisbury), Oxford university, and Queen's college Oxford,
from W. Herman, Broad Street, Oxford

£250-350



190



191

191
A WHITE PAINTED AND
PARCEL GILTWOOD PRICKET
CANDLESTICK
18TH CENTURY
95cm high

£200-300



192

192
CIRCLE OF SIR THOMAS LAWRENCE, P.R.A.
(BRITISH 1769-1830)
PORTRAIT OF A NOBLE MAN, THREE QUARTER LENGTH
Oil on canvas
90 x 70cm (35¼ x 27½ in.)

£1,000-1,500

193
A PAIR OF LARGE CHINESE BLUE AND WHITE VASES
20TH CENTURY
Decorated in underglaze blue with dragons chasing the
flaming pearl amidst stylised clouds
68cm high

£600-800



193

194
A CHINESE EXPORT PORCELAIN JARDINIÈRE
19TH CENTURY
Decorated with panels of fantastic rocks and flowers
45cm diameter with carved hardwood stand
Presented with a faux-amaryllis display

£100-150



194



196

195
GERARD VAN SOEST (BRITISH 1637 - 1681)
PORTRAIT OF JAMES USSHER ARCHBISHOP
OF ARMAGH
Oil on canvas
36 x 29cm (14 x 11¼ in.)

Provenance:
Sale, Sotheby's Olympia, London, *British and
Continental Pictures*, 13 October 2004, lot 2

£800-1,200

196
A CONTINENTAL CARVED OAK
FLATBACK FIGURE OF A PEASANT OR
TRAVELLER
POSSIBLY ANTWERP, 16TH/17TH CENTURY
Formerly part of a larger group
47cm high, now on a later oak base,
53cm high overall

£400-600



195

197
A GEORGE III MAHOGANY
CHEST OF DRAWERS
LATE 18TH CENTURY
With arrangement of two short
and three long drawers
81cm high, 94cm wide,
49cm deep

£500-800



197

198
A DUTCH REPOUSSÉ GILT BRASS MARGINAL
MIRROR IN THE 17TH CENTURY TASTE
LATE 19TH CENTURY
113cm high, 70cm wide

£400-600



198



199

199
A TABRIZ SILK RUG
approximately 373cm x 273cm

£4,000-6,000



200

200
 A SET OF FOUR ITALIAN SILVERED WOOD
 ALTAR CANDLESTICKS
 LATE 18TH OR EARLY 19TH CENTURY
 Each with pricket above a triform stem
 114cm high

£1,200-1,800

201
 A WILLIAM III OAK SIDE TABLE
 CIRCA 1690
 With single frieze drawer above barley-twist
 supports and shaped x-stretcher
 77cm high, 89cm wide, 52cm deep

£300-500



201



202

202
 A MAHOGANY AND BLUE DAMASK
 UPHOLSTERED WING ARMCHAIR IN
 GEORGE II STYLE
 LATE 19TH OR EARLY 20TH CENTURY
 148cm high, 91cm wide, 77cm deep

£400-600



204

204
 AFTER AUGUSTE DE WEVER
 (BELGIAN, 1836-1884)
 A BRONZE FIGURE OF VALENTIN
 LATE 19TH OR EARLY 20TH CENTURY
 Signed and inscribed to cast
 30.5cm high

£500-700



203

203
 AFTER CHRISTOPHE FRATIN
 (FRENCH, 1801-1864) A LARGE ANIMALIER
 BRONZE OF A WILD BOAR
 LATE 19TH CENTURY
 Signed to cast base FRATIN
 28cm high, base 41cm wide, 20cm deep

£800-1,200



205

205
 A BRONZED MODEL OF AN ARAB MAN
 MID/LATE 20TH CENTURY
 Filled figure depicted standing dressed in
 robes and holding a rifle
 65cm high

£400-800



206

206
 A LOUIS XV FRUITWOOD AND GILT METAL MOUNTED ARMOIRE
 CIRCA 1750
 The domed panel doors enclosing a later hanging rail
 234cm high, 155cm wide, 62cm deep

In order to remove this from the property, and after the catalogue images were taken, it was necessary to disassemble this piece. It is therefore offered 'flatpacked' and will need re-building on purchase for installation and use. It is viewed in its constituent pieces.

£400-600

207
 CHARLES (KARL) KORSCHANN
 (1872-1943), A BRONZE FIGURE
 OF A SHEPHERDESS
 EARLY 20TH CENTURY
 Signed to the cast
 30.5cm high, 33.5cm wide overall

£500-800

208 Y
 A PAIR OF KINGWOOD AND PARQUETRY
 BEDSIDE COMMODES IN LOUIS XV STYLE
 EARLY 20TH CENTURY
 Each with an arrangement of three long
 drawers
 68cm high, 41cm wide, 34cm deep

£600-800



207



208



209



209
 A TABRIZ PART SILK RUG
 approximately 165cm x 103cm

£400-600



210

210
AN AUBUSSON STYLE WOVEN RUG
approximately 236cm x 197cm

£300-500



211
A KINGWOOD, PARQUETRY, AND
GILT METAL MOUNTED COMMODE
IN LOUIS XV STYLE
EARLY 20TH CENTURY
The marble top above the arrangement
of two drawers
88cm high, 118cm wide, 52cm deep

£300-500

212
A BRASS BEDSTEAD IN VICTORIAN STYLE
EARLY 20TH CENTURY

The headboard with brass 'wings' hung with drapes, the footboard centred by a shell
235cm high, 175cm wide, 215cm long

The curtains, valance, cushions and bedspread are included with the bedstead

£400-600



212



213
 A PAIR OF BLACK JAPANED AND PARCEL GILT
 JARDINIÈRES
 SECOND QUARTER 20TH CENTURY
 Each of hexagonal section
 18cm high, 20cm wide

Together with a later white painted waste paper basket, 30cm
 high, and a modern painted tinware basket and tissue box cover

£180-220

213



214
 A PAIR OF JAPANESE BLUE AND WHITE VASES
 IN CHINESE STYLE
 FIRST QUARTER 20TH CENTURY, WITH
 APOCRYPHAL SIX CHARACTER MARKS
 Fitted as lamps, with blue and white shades
 each 51cm high

£200-300



214



215



215
 A PAIR OF FRENCH KINGWOOD AND
 MARBLE TOPPED BEDSIDE COMMODOES
 EARLY 20TH CENTURY, GALLERIE
 VENDOME, NICE
 One stamped beneath the marble top
 each 70cm high, 37cm wide, 28cm deep

£400-600



216

216
 A PAINTED AND SILVERED WOOD FOUR POSTER BED
 OF RECENT MANUFACTURE
 With blue tapestry style hangings, the headboard with broken scroll pediment centred by a shell
 236cm high, 164cm wide, 220cm deep

The curtains, valance, cushions and bedspread are included with the bed

£1,000-1,500



217

217
A SET OF FOUR CARVED, PAINTED
AND PARCEL GILT SOFTWOOD
FIGURES OF ANGELS
LATE 20TH CENTURY
Each modelled standing with wings,
holding a musical attribute
slight size variance but approximately
31.5cm high

£300-400



218

218
A CARVED AND POLYCHROME
FIGURAL GROUP
POSSIBLY SWISS TYROL,
EARLY 19TH CENTURY
Depicting a man with flowing cloak,
hat, with a winged cherub
26.5cm high

£300-500

219
A CARVED OAK FIGURE OF A
BISHOP SAINT
EARLY 17TH CENTURY
Holding a staff in his right hand and crushing
a demon under his foot, now mounted
on shallow chamfered plinth and a later
hexagonal oak plinth
The figure 36cm high, 58cm high overall

£400-600



219

220
A PAINTED WROUGHT METAL FOUR POSTER BED IN VICTORIAN STYLE
20TH CENTURY
Hung with canopy and drapes
220cm high, 184cm wide, 215cm deep

The curtains, valance, cushions and bedspread are included with the bed.

£400-600



220



221

221
LÉONTINE LERNÉE (FRENCH ACTIVE 1800 – 1840)
AFTER JEAN MARC NATTIER
Oil on canvas
Signed and inscribed 'Léontine Lernée d'après Nattie' (lower left)
100 x 70cm (39¼ x 27½ in.)

£1,000-1,500



222

222
A COMPANION PAIR OF SILVERED AND GILTWOOD
MODELS OF PUTTI
18TH CENTURY
One modelled with hands together, the other with one hand to
his breast and one outstretched to the side
each 27cm high

£400-600

223



223
AN ISFAHAN PART SILK RUG
approximately 108cm x 108cm

£300-500



224
A CARVED MAHOGANY AND PARCEL GILT BED IN VICTORIAN TASTE
SECOND HALF 20TH CENTURY
175cm high, 226cm long, 212cm wide

Together with a pair of matching curtain drapes
each approximately 230cm high

The curtains, valance, cushions and bedspread are included with the bed.
The canopy is not included

£1,000-1,500

224



225



225
A CARVED SOFT WOOD FIGURE OF AN
ANGEL IN FLIGHT
LATE 19TH, EARLY 20TH CENTURY
The cherub modelled contrapposto
60cm long overall

Together with a modern polychrome painted
example, 56cm high overall
(2)

£400-600



228

228
A CONTINENTAL PAINTED COMPOSITION WALL MIRROR
EARLY 20TH CENTURY
The shaped rectangular frame adorned with playful cherubs, flowers and drapery
153cm high, 101cm wide

£300-500



227

226
A CARVED OAK FIGURE OF A SAINT
POSSIBLY 17TH CENTURY
43cm high
Now set on a Baroque style carved oak wall
bracket
approximately 83cm high overall

£300-500



226

227
A LARGE CARVED LIMWOOD FIGURE OF A PRAYING APOSTLE
NORTHERN EUROPEAN, 18TH OR 19TH CENTURY
Depicted standing in long flowing robes
92cm high

£600-800



229

230

229
A SET OF FOUR PAINTED TINWARE WASTE
PAPER BASKETS
MODERN
Of rectangular section tapering form, each with
musical instrument motif
each 30cm high, 31cm wide

£250-350

230
A TABRIZ PART SILK RUG
approximately 206cm x 149cm

£400-600





231
A DUTCH WALNUT AND MARQUETRY INLAID DRESSING TABLE
 19TH CENTURY
 The rectangular swing plate above platform drawers and further long drawer, on cabriole supports and concave base
 180cm high, 91cm wide, 58cm deep

Together with a similar but associated side chair, 94cm high

£300-500

232
A DUTCH WALNUT AND FLORAL MARQUETRY INLAID COMMODE
 EARLY 19TH CENTURY
 Of bombe outline, the shaped top above an arrangement of four long drawers
 85cm high, 95cm wide, 54cm deep

£300-500

233
A DUTCH WALNUT AND MARQUETRY COMMODE
 EARLY 18TH CENTURY AND LATER
 The shaped top with central flowering urn above an arrangement of four long drawers
 72cm high, 84cm wide, 53cm deep

£400-600

231



232



233



234

232
A DUTCH WALNUT AND FLORAL MARQUETRY INLAID WARDROBE OR 'KAS'
 EARLY 19TH CENTURY
 The doors enclosing slides and drawers, the base with three long graduated drawers
 246cm high, 170cm wide, 60cm deep

£800-1,200



235

235
 A CARVED OAK WALL MIRROR IN
 GEORGE III STYLE
 OF RECENT MANUFACTURE
 The pierced frame surrounding a
 bevelled plate
 125cm high, 62cm wide

£300-500



236

236
 A WALNUT AND GILT METAL
 MOUNTED PETIT COMMODE IN
 LOUIS XV STYLE
 CIRCA 1900
 Of serpentine outline
 79cm high, 56cm wide, 46cm deep

£200-300



238

238
 A VENETIAN CLEAR GLASS WITH BLUE
 FLASHED CABOCHONS, RESERVED
 ON A GILT VERMICULAR GROUND PART
 TABLE SERVICE
 MID 20TH CENTURY

Comprising; twelve various finger bowls
 and stands, twelve champagne cups, six
 champagne flutes, six red wine, six white
 wine glass, six water goblets, a large covered
 goblet, 46cm high, a decanter and stopper,
 33cm and a pair of candlesticks, 38.5cm high

£2,000-3,000



239

239
 AN ITALIAN WALNUT AND CROSSBANDED CHEST OF DRAWERS
 LATE 19TH OR EARLY 20TH CENTURY
 Of bombe outline
 84cm high, 85cm wide, 44cm deep

Together with a pair of bedside commodes en-suite, each 73cm high,
 53cm wide, 32cm deep

£400-600



237

237
 A PAIR OF GILTWOOD CONSOLE TABLES
 LATE 19TH OR EARLY 20TH CENTURY
 Each of semi-elliptical outline above a pierced
 frieze and wall bracket
 70cm high, 36cm wide, 18cm deep

£500-800



240 Y

A FRENCH KINGWOOD, VERNIS MARTIN, AND GILT METAL MOUNTED SIDE CABINET
LATE 19TH OR EARLY 20TH CENTURY

The doors decorated with figures in an exterior scene, signed Crozet, enclosing a fitted interior with compartment, drawers, and writing slide
137cm high, 94cm wide, 36cm deep

£700-1,000



240

241

A GEORGE III GILTWOOD WALL MIRROR
LATE 18TH CENTURY

The pierced foliate frame surrounding a central oval plate
133cm high, 68cm wide

£3,000-5,000



241

242

A PAIR OF GILTWOOD AND UPHOLSTERED
FOOTSTOOLS
CIRCA 1900

Of oval form
18cm high, 38cm wide,
29cm deep

£150-200



242





243

243 Y
A JAPPANED, PAINTED, AND PARCEL GILT BUREAU BOOKCASE
EARLY 20TH CENTURY
Mother-of-pearl inlaid throughout and decorated with exterior scenes, the cupboard doors enclosing shelves, the fall enclosing a fitted interior
199cm high, 72cm wide, 43cm deep

£400-600

244
A PAIR OF WHITE COLOURED METAL BONBONNIERES
MODERN
In the manner of oversized table salts, each with shell bowl above a dolphin pattern support and rectangular base
30cm high, 18cm wide at the shell

£250-350



244



245

245
AN ULISSE CANTAGALLI SHELL-SHAPED CISTERN BOWL IN SAVONA STYLE
LATE 19TH CENTURY
Painted with figures in a landscape, black cockerel mark,
17cm x 29cm

£250-350

246
AN IRON COFFEE GRINDER MILL
LATE 18TH OR EARLY 19TH CENTURY
Of double helix form, mounted with vice crusher to side
28cm high

Together with a wrought iron taperstick in the 17th century manner, 18th or 19th century, 47cm high, a leather blackjack jug, 19th century, mounted with pewter shield inscribed em 1625, 27cm high, and a Westerwald tall jug with silver collar hallmarked Hukin & Heath Birmingham, 1881, 30cm high

£200-400



246

247
A CARVED OAK WALL MOUNT
EARLY 20TH CENTURY
Modelled as two opposing cherub heads, each with tousled hair
25cm high, 39cm wide

£300-500



247



248

248
A RED PAINTED AND PARCEL GILT STANDARD LAMP
EARLY 20TH CENTURY
With barley twist shaft and triform base
152cm high

£150-250

249
A CARVED HARDWOOD DOUBLE BED IN 19TH CENTURY ANGLO-INDIAN STYLE
LATE 20TH CENTURY
With scroll and barley-twist to the headboard
187cm high, 143cm wide, 199cm long overall

£600-800



249



250

250
A CONTINENTAL PAINTED WARDROBE
BEARING DATE 1765

The panel doors enclosing an arrangement of shelves
163cm high, 129cm wide, 50cm deep

£400-600



251

251
A CONTINENTAL PAINTED WARDROBE
BEARING DATE 1855

Painted to simulate kingwood, the panel doors enclosing a hanging space and arrangement of shelves
163cm high, 129cm wide, 50cm deep

£600-800

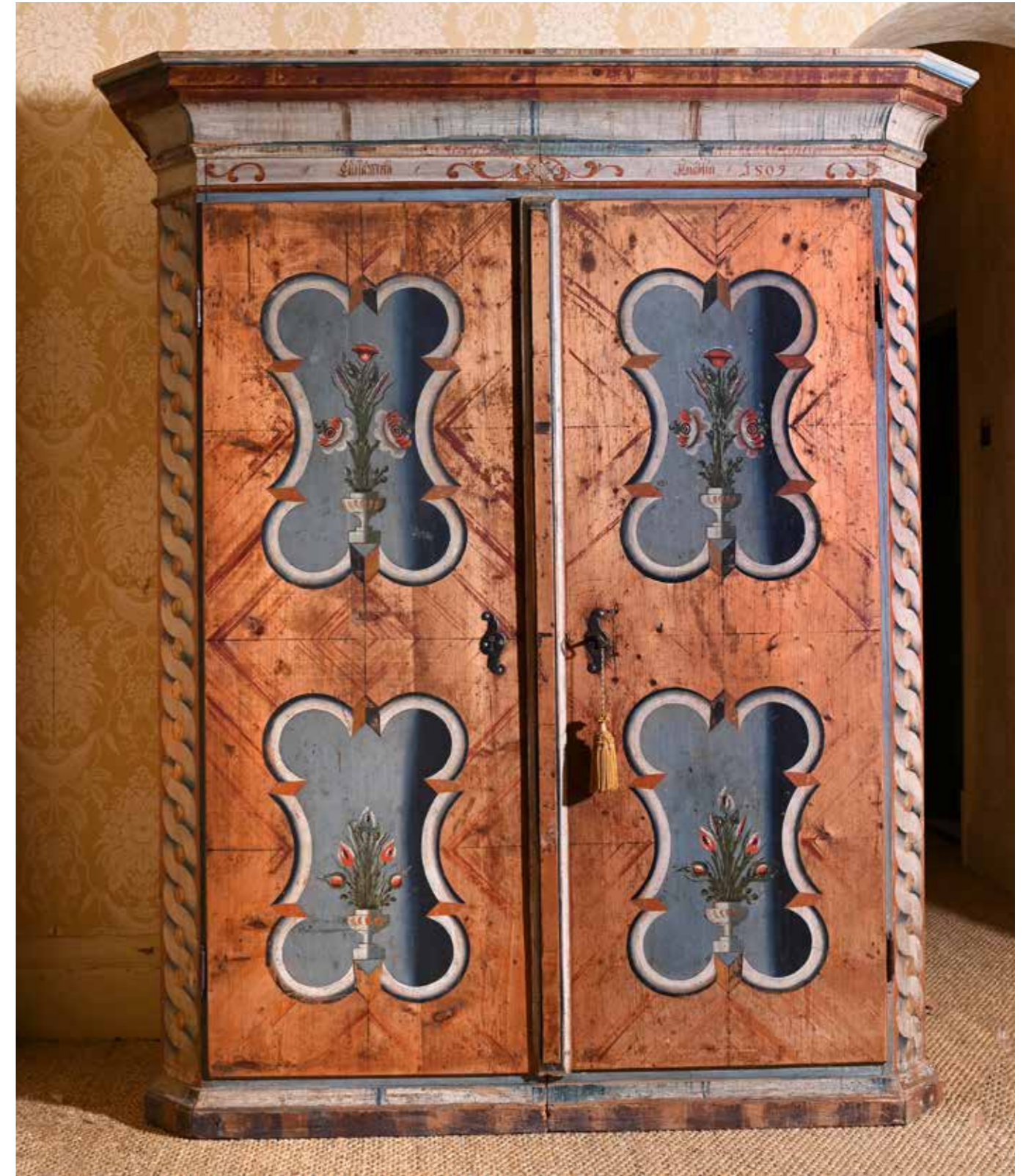


252

252
A GREEN AND POLYCHROME PAINTED WARDROBE
18TH CENTURY

The frieze initialled AL MR, the cupboard doors enclosing a hanging rail
197cm high, 175cm wide, 55cm deep

£600-800



253

253
A CONTINENTAL PAINTED WARDROBE
BEARING DATE 1809

The panel doors enclosing a hanging space and arrangement of shelves
178cm high, 150cm wide, 61cm deep

£500-800



254

254
A POLYCHROME PAINTED PINE WARDROBE IN 18TH CENTURY STYLE
 OF RECENT MANUFACTURE, BEARING APOCRYPHAL DATE FOR 1788
 The cupboard doors decorated in German for the four seasons and enclosing a hanging rail
 191cm high, 165cm wide, 80cm deep

£500-800



256



255

255
A PAINTED COFFER
 19TH CENTURY
 Of small proportion
 49cm high, 80cm wide, 51cm deep

£400-600

256
A PAINTED WARDROBE IN 18TH CENTURY STYLE
 20TH CENTURY
 Bearing date 1826 to the cupboard door, enclosing a hanging rail
 168cm high, 97cm wide, 47cm deep

£300-500

257
A PAINTED WOOD COFFER
 19TH CENTURY
 With later blue and white fabric top above the lid enclosing
 a large compartment
 49cm high, 177cm wide, 39cm deep

£500-800



257



258

258 λ
 ISMAEL GONZALEZ DE LA SERNA (SPANISH 1898-1968)
 ARMARI DE PARET
 Oil on board
 Signed and dated '1954' (lower centre)
 112 x 81.5cm (44 x 32 in.)

£2,000-3,000

Provenance:
 Manel Mayoral, Galleria d'Art, Barcellona

Exhibited:
 Pabellon Mudejar, Museo de Arte Y Costumbres, *Exposition 'Ismael de La Serna'*, Sevilla, May-June 1990, cat. no. 92 as 'Alacena'



259

259
 A SPANISH WALNUT TABLE
 LATE 17TH OR EARLY 18TH CENTURY
 The rectangular top above a frieze drawer
 above wavy trestle ends united by a wrought
 iron scroll stretcher
 77cm high, 134cm wide, 68cm deep

£800-1,200

260
 A NAIN SUPERFINE WOOL AND MIXED
 SILK PILE RUG
 approximately 164cm x 160cm

£300-500



260



261

261
A BRONZE RAM HEAD
MODERN, AFTER THE ANTIQUE
Naturalistically modelled, with a fixture to the reverse for wall hanging
15cm high, 22cm wide overall

£300-500



262

262
A TABRIZ SUPERFINE WOOL AND MIXED SILK PILE RUG
approximately 121cm x 121cm

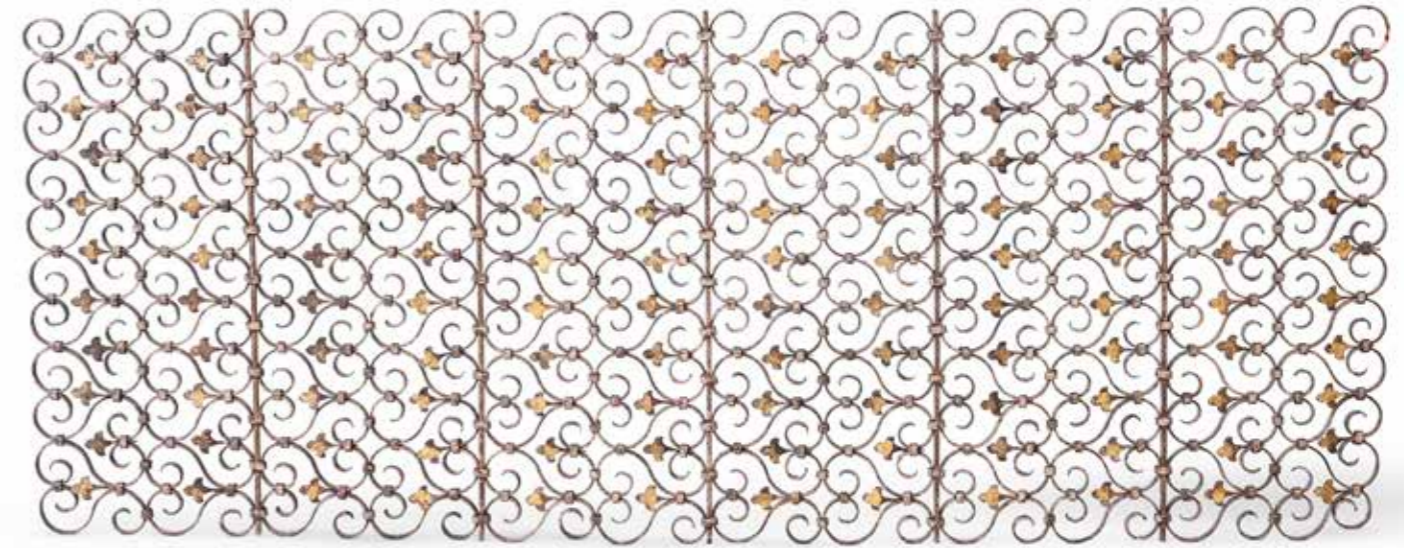
£300-500

263
A CARTOON FOR A TAPESTRY
FLEMISH, 18TH CENTURY
Sepia wash on paper, laid down
163cm x 105cm

£800-1,200



263



264

264
A CONTINENTAL WROUGHT IRON AND PARCEL GILT OPEN SCROLLWORK PANEL
19TH CENTURY, POSSIBLY VENETIAN
182cm high, 73cm wide

£300-500

265
A SET OF THREE STEEL FIRE TOOLS
19TH CENTURY
Comprising shovel, poker, and tongs, on an associated stand
the poker 74cm long, the stand 87cm high

Together with another later set of three fire tools on stand,
the stand 77cm high

£300-500



265



266

266
A PAIR OF CARVED WHITE MARBLE AND SLATE SIDE TABLES OF SPHINX BASE FORM
MODERN
Each with a shaped oval slate top above the white marble base
76cm high, 46cm wide, 69cm deep

£1,000-1,500

COMING UP AT DREWEATTS & FORUM AUCTIONS

8 February | Forum Auctions
Winter Selection: Modern & Contemporary Editions

13 February | Dreweatts
A Private Collection: From a Cumbrian Estate

14 February | Dreweatts
Interiors

16 February | Dreweatts
Art Live

20 February | Dreweatts
Wine, Champagne and Spirits

21 February | Dreweatts
Old Master, British and European Art

27 February | Dreweatts
Fine Clocks, Barometers and Scientific Instruments

5 & 6 March | Dreweatts
Drew Pritchard: The Collection

6 March | Forum Auctions
Editions and Works on Paper

7 March | Dreweatts
Fine Jewellery, Silver, Watches and Objects of Vertu

13 March | Dreweatts
Modern and Contemporary Art

19 March | Dreweatts
Wine, Champagne and Spirits

26 & 27 March | Dreweatts
Fine Furniture, Sculpture, Carpets, Ceramics and Works of Art

27 March | Forum Auctions
Colour Plate Books from the Library of Norman Bobins (part 2)

28 March | Forum Auctions
Fine Books, Manuscripts and Works on Paper



NOW INVITING ENTRIES

If you have an item you would like valued for sale at auction, we would be delighted to provide you with a free, no obligation estimate. Contact us to arrange an in-person appointment or visit our website to see how to submit the information online.

DREWEATTS
EST. 1759

dreweatts.com
info@dreweatts.com
NEWBURY
01635 553 553
LONDON
020 7839 8880

forumauctions.co.uk
info@forumauctions.co.uk
LONDON
020 7871 2640

 **Forum**
Auctions

Please see Conditions of Business and Conditions of Sale on the following pages.

Dreweatts & Dreweatts 1759 are trading names of Dreweatts 1759 Ltd. Dreweatts 1759 Ltd is registered in England, company number: 10758982, registered office: C/O Bishop Fleming LLP, 10 Temple Back, Bristol, BS1 6FL.

IMPORTANT NOTICES

BUYING AT DREWEATTS

There are several ways you can bid at a Dreweatts auction; in person, by leaving a commission or absentee bid, on the telephone where available and live via the internet – please make arrangements before the sale. THIS NOTICE APPLIES ONLY TO A PERSON WHO WISHES TO BID IN PERSON, OR BY LEAVING A COMMISSION OR ABSENTEE BID, AT A DREWEATTS PUBLIC AUCTION. For bidding at an online auction or for online bidding at a public auction please see our Online Auction Terms published on our website at www.dreweatts.com.

BIDDING IN PERSON

If intending to buy you are required to register your name and details at reception prior to the commencement of the auction. You will be required to provide a proof of identity and address to register for bidding. You will then be allocated a bidding number, which you use when bidding for an item.

COMMISSION BIDS

Dreweatts will execute bids on your behalf if you are unable to attend the sale. Commission or absentee bids are accepted either directly at reception, or can be sent by post, fax, email, telephone or via the website: www.dreweatts.com.

Dreweatts will add these bids to the auctioneers' sale book and will undertake to purchase the lots on your behalf as cheaply as allowed by other bids and reserves. If two buyers submit identical commission bids Dreweatts may prefer the first bid received.

Dreweatts does not accept liability for failing to execute commission bids, or for any errors or omissions.

CONDITION

Bidders must satisfy themselves as to the condition of each lot. Condition reports are available on request – see the Conditions of Business at the back of this catalogue forming part of these Auction Terms and Conditions for more information regarding condition reports. Requests for condition reports must be submitted by 4pm on the day prior to the auction; condition reports may be available alongside the lot description on the online catalogue at: www.dreweatts.com.

COMMISSION CHARGES

All purchases are subject to a buyer's premium, which is charged per lot at 26% of the hammer price (31.2% including VAT) up to and including £20,000, 25% (30% including VAT) of the hammer price from £20,001 up to and including £500,000, 20% (24% including VAT) of the hammer price from £500,001 up to and including £1,000,000 and 12.5% of the hammer price (15% including VAT) in excess of £1,000,000. A theta symbol (θ) indicates that the lot is a zero rated item and therefore not subject to VAT on the buyer's premium. This applies to bound books (manuscripts and printed), unframed maps and albums. In the event the lot has a dagger (†) beside the lot number in the catalogue, this indicates that the lot is owned by an entity or company required to pay VAT (generally not an Antique Dealer, as they operate under a dealers margin scheme). VAT is payable at 20% on the Hammer Price. Lots marked with a double dagger (‡) (presently a reduced rate of 5%) or Ω (presently at standard rate of 20%) have been imported from outside the UK to be sold at auction and therefore the buyer must pay the import VAT at the appropriate rate on the hammer price.

PAYMENT

Payment will be accepted, if you are a successful bidder, by debit card issued in the name of the Buyer by a UK bank and registered to a UK billing address; by all major UK issued credit cards issued in the name of the Buyer and registered to a UK billing address with the exception of Diners Club; by bank transfer direct into our bank account, Bank Details: NatWest, 30 Market Place, Newbury, Berkshire RG14 5AG. Account Name: Dreweatts 1759 Ltd. A/C: 62412949, Sort Code: 60-15-07, BIC: NWBKGB2L, IBAN: GB21NWBK60150762412949. The name of the bank account holder should match the name of the buyer. First time buyers who are not present at the saleroom are requested to pay by bank transfer.

Y CITES REGULATIONS

Please note that lots marked with the symbol (Y) in this catalogue may be subject to CITES Regulations when exported. Relevant CITES Regulations may be found at www.gov.uk/guidance/cites-imports-and-exports.

COLLECTIONS, SHIPPING AND STORAGE

Unless otherwise stated below, purchases are available for collection from Dreweatts Donnington Priory salerooms from Monday to Friday (9am-5pm) by appointment only. If you wish to have items shipped to you, please see our list of suggested shippers on our website.

Garden items and smaller objects and pictures: items will remain at Donnington Priory, but please check when booking your collection.

Large items (furniture, mirrors, large works of art, carpets and rugs): items will be removed to commercial storage at Sackville-West Moving & Storing (Andover SP10 3SA) on **Tuesday 20 February** and will be available for collection from **Wednesday 21 February** onwards. Items removed to Sackville West Moving & Storing will be subject to a transfer fee of £20 (plus VAT) and a storage charge of £3 (plus VAT) per lot per part or full day thereafter. These charges will be the sole liability of the purchaser and will be billed directly to them by Sackville-West Moving & Storing. Sackville-West Moving & Storing will provide an additional week's free storage if they are instructed by the purchaser to deliver to them. On payment of all sales and storage costs, items will be available for collection by appointment from Sackville-West Moving & Storing (tel: +44 (0) 2080 909988; email: office@sackvillewest.co.uk).

FURTHER INFORMATION

The colours printed in this catalogue are not necessarily a true reflection of the actual item. All weights and measures given in the catalogue should be regarded as approximate.

VALUATION SERVICES

Dreweatts provides a range of confidential and professional valuation services to private clients, solicitors, executors, estate managers, trustees and other professional partners. These services include auction valuations, insurance valuations, probate valuations, private treaty valuations, valuations for family division or for tax purposes. For more information, please see our website: www.dreweatts.com.

For directions to Donnington Priory, please see our website: www.dreweatts.com.

Parking is available at Donnington Priory in two car parks on either side of the saleroom.

INFORMATION FOR BUYERS AT PUBLIC AUCTIONS

1. **INTRODUCTION.** The following notes are intended to assist Bidders and Buyers, particularly those inexperienced or new to our salerooms. All of our auctions and sales are conducted on our printed Auction Terms and Conditions, including these Conditions of Sale and Business, which are readily available for inspection and normally accompany catalogues. Our staff will be happy to help you if there is anything you do not fully understand.

Any particular auction and/or any particular lot in an auction may be subject to different or additional terms which will be published in our auction catalogue. All auctions and sales of wines and spirits, jewellery, watches and clocks are subject to the special terms set out in the relevant Notices in relation to those items published in our auction catalogue and, in the event of any conflict or inconsistency, those special terms prevail over any other terms in our Auction Terms and Conditions. By bidding at the auction, you agree to be bound by these terms.

2. **AGENCY.** As auctioneers we usually act as agents for the seller whose identity, for reasons of confidentiality, is not normally disclosed. Accordingly if you buy at auction your contract for the item or items purchased is with the seller and not with us as the auctioneer.

3. **ESTIMATES.** Estimates are designed to help buyers gauge what sort of sum might be involved for the purchase of a particular lot. Estimates may change and should not be thought of as the sale price. The lower estimate may represent the reserve price and certainly will not be below it. Estimates do not include the Buyer's Premium or VAT (where chargeable). Estimates are prepared some time before the sale and may be altered by announcement before the sale. They are in no sense definitive.

4. **BUYER'S PREMIUM.** The Conditions of Sale forming part of our Auction Terms and Conditions require the buyer to pay a buyer's premium on the hammer price of each lot purchased. The buyer's premium is 26% of the hammer price up to and including £20,000, 25% of the hammer price from £20,001 up to and including £500,000, 20% of the hammer price from £500,001 up to and including £1,000,000, and 12.5% of the hammer price in excess of £1,000,000. VAT at the prevailing rate of 20% is added to buyer's premium and additional charges as defined below.

5. **VAT.** A theta symbol (θ) indicates that the lot is a zero rated item and therefore not subject to VAT on the buyer's premium. This applies to bound books (manuscripts and printed), unframed maps and albums. A dagger symbol (\dagger) indicates that VAT is payable by the purchaser at the standard rate (presently 20%) on the hammer price as well as being an element in the buyers' premium. This imposition of VAT is likely to be because the seller is registered for VAT within the European Union and is not operating the Dealers Margin Scheme or because VAT is due at 20% on import into the UK. A double dagger (\ddagger) indicates that the lot has been imported from outside the UK and the present position is that these lots are liable to a reduced rate of Import VAT currently 5% on the hammer price. (Ω) indicates that the lot has been imported from outside the UK and these lots are liable to the standard rate of Import VAT currently 20% on the hammer price. Lots which appear without the above symbols indicate that no VAT is payable on the hammer price; this is because such lots are sold using the Auctioneers Margin Scheme and it should be noted that the VAT included within the buyers' premium is not recoverable as input tax.

6. **DESCRIPTION AND CONDITION.** Condition reports are provided on our website or upon request. The absence of a report does not imply that a lot is without imperfections. The detail in a report will reflect the estimated value of the lot. Large numbers of such requests received shortly before the sale may mean that reports cannot be provided for all lots. Members of staff are not trained restorers or conservators and, particularly for higher value lots, you should obtain an opinion from such a professional. Dreweatts is not liable for damage to gilded picture frames, plaster picture frames or picture frame glass; if a Lot is or becomes dangerous, we may dispose of it without notice to bidders in advance in any manner we see fit and will be under no liability for doing so. We recommend that you always view a lot in person.

We are dependent on information provided by the seller about a lot and whilst we may inspect lots and act reasonably in taking a general view about them we are normally unable to carry out a detailed examination and frequently no examination of lots in order to ascertain their condition in the way in which it would be wise for a buyer to do. Intending buyers have ample opportunity for inspection of goods and, therefore, accept responsibility for inspecting and investigating lots in which they may be interested and the corresponding risk should they not do so. Please note carefully the exclusion of liability for the condition of lots contained in the Conditions of Sale. Neither the seller nor we, as the auctioneers, accept any responsibility for their condition. In particular, mechanical objects of any age are not guaranteed to be in working order. However, in so far as we have examined the goods and make a representation about their condition in the auction catalogue, we shall be liable for any defect which is not reflected in that representation and which

that examination ought to have revealed to the auctioneer but which would not have been revealed to the buyer had the buyer examined the goods. Additionally, in specified circumstances lots misdescribed because they are 'deliberate forgeries' may be returned and repayment made. There is a 3 week time limit. (The expression 'deliberate forgery' is defined in our Conditions of Sale).

7. **ELECTRICAL GOODS.** These are sold as 'antiques' only and if bought for use must be checked over for compliance with safety regulations by a qualified electrician before use.

8. **EXPORT OF GOODS.** Buyers intending to export goods should ascertain (a) whether an export licence is required and (b) whether there is any specific prohibition on importing goods of that character because, e.g. they may contain prohibited materials such as ivory. Ask us if you need help.

Private overseas buyers can only receive goods free of VAT or have the VAT amount refunded if Dreweatts acts as exporter in relation to the sale, the goods are exported within 3 months of the sale and Dreweatts is in possession of adequate export documents. The VAT refunds are available for transactions exceeding £2,500. If you arrange for the goods to be picked up/delivered to you directly we will charge UK VAT at the appropriate rate and no refund will be available. Please note, buyers are responsible for completing the importation procedures as well as the payment of any relevant duty/VAT payable on importation into the destination country.

Where the purchase has been made in the business or trading name, VAT refund will be available on proof of export provided within 3 months of the sale.

9. **BIDDING.** Bidders will be required to register before the sale commences and lots will be invoiced to the name and address on the sale registration form. Bidders are required to provide a government issued identity document and a proof of address. Please enquire in advance about our arrangements for telephone bidding.

10. **COMMISSION BIDDING.** Commission bids may be left with the auctioneers indicating the maximum amount to be bid excluding buyers' premium. Dreweatts will add these bids to the auctioneers' sale book and they will be executed as cheaply as possible having regard to the reserve (if any) and competing bids. If two buyers submit identical commission bids the auctioneers may prefer the first bid received. Please enquire in advance about our arrangements for the leaving of commission bids by telephone or fax. Dreweatts does not accept liability for failing to execute commission bids, or for any errors or omissions.

11. **METHODS OF PAYMENT.** Payment will be accepted, if you are a successful bidder, by debit card issued in the name of the Buyer by a UK bank and registered to a UK billing address; by all major UK issued credit cards issued in the name of the Buyer and registered to a UK billing address with the exception of Diners Club; by bank transfer direct into our bank account, Bank Details: NatWest, 30 Market Place, Newbury, Berkshire RG14 5AG. Account Name: Dreweatts 1759 Ltd. A/C: 62412949, Sort Code: 60-15-07, BIC: NWBKGB2L, IBAN: GB21NWBK60150762412949. The name of the bank account holder should match the name of the buyer. First time buyers who are not present at the saleroom are requested to pay by bank transfer.

12. **COLLECTION AND STORAGE.** Please note what the Conditions of Sale state about collection and storage. It is important that goods are paid for and collected promptly. Any delay may involve the buyer in paying storage charges.

13. **λ DROIT DE SUITE ROYALTY CHARGES.** From 1st January 2012 all UK art market professionals (which includes but is not limited to; auctioneers, dealers, galleries, agents and other intermediaries) are required to collect a royalty payment for all works of art that have been produced by qualifying artists each time a work is re-sold during the artist's lifetime and for a period up to 70 years following the artists death. This payment is only calculated on qualifying works of art which are sold for a hammer price more than the UK sterling equivalent of EURO 1,000 – the UK sterling equivalent will fluctuate in line with prevailing exchange rates. It is entirely the responsibility of the buyer to acquaint himself with the precise EURO to UK Sterling exchange rate on the day of the sale in this regard, and the auctioneer accepts no responsibility whatsoever if the qualifying rate is different to the rate indicated. All items in this catalogue that are marked with λ are potentially qualifying items, and the royalty charge will be applied if the hammer price achieved is more than the UK sterling equivalent of EURO 1,000. The royalty charge will be added to all relevant buyers' invoices, and must be paid before items can be cleared. All royalty charges are passed on to the Design and Artists Copyright Society ('DACS'), no handling costs or additional fees with respect to these charges will be retained by the auctioneers. The royalty charge that will be applied to qualifying items which achieve a hammer price of more than the UK sterling equivalent of EURO 1,000, but less than the UK sterling equivalent of EURO 50,000 is 4%. For qualifying items that sell for more than the UK sterling equivalent of EURO 50,000 a sliding scale of royalty charges will apply – for a complete list of the royalty charges and threshold levels, please see www.dacs.org.uk. There is no VAT payable on this royalty charge.

TERMS OF CONSIGNMENT FOR SELLERS IN PUBLIC AUCTIONS

The sale of goods at our public auctions and a seller's relationship with us are governed by our Auction Terms and Conditions including these Terms of Consignment for Sellers in Public Auctions and our Conditions of Sale for Public Auctions. Any particular auction and/or any particular lot in an auction may be subject to different or additional terms which will be published in our auction catalogue or separately announced prior to the auction. All auctions and sales of wines and spirits, jewellery, watches and clocks are subject to the special terms set out in the relevant Notices in relation to those items published in our auction catalogue and, in the event of any conflict or inconsistency, those special terms prevail over any other terms in our Auction Terms and Conditions. Please note that our Auction Terms and Conditions including these Terms of Consignment for Sellers in Public Auctions and our Conditions of Sale for Public Auctions relate to auctions held in our salerooms and we have separate terms and conditions for our online auctions.

If you, or another person acting on your behalf, provide goods to us to sell on your behalf at one of our auctions this signifies that you agree to and will comply with our Auction Terms and Conditions including these Terms of Consignment for Sellers in Public Auctions and our Conditions of Sale for Public Auctions.

1. **INTERPRETATION.** In these Terms the words 'you', 'yours', etc. refer to the Seller and if the consignment of goods to us is made by an agent or otherwise on the Seller's behalf we assume that the Seller has authorised the consignment and that the consignor has the Seller's authority to contract. All obligations that apply to the Seller under these Terms of Consignment for Sellers in Public Auctions shall apply to the owner of the goods and their agent jointly and separately. Similarly the words 'we', 'us', etc. refer to the Auctioneers.

2. **WARRANTY.** The Seller warrants that possession in the lots can be transferred to the Buyer with good and marketable title, free from any third party right and encumbrances, claims or potential claims. The Seller has provided all information concerning the item's ownership, condition and provenance, attribution, authenticity, import or export history and of any concerns expressed by third parties concerning the same.

3. **ALL COMMISSIONS.** and fees are subject to VAT at the prevailing rate.

4. **COMMISSION.** is charged to sellers and all selling terms are available from our salerooms.

5. **REMOVAL COSTS.** Items for sale must be consigned to the saleroom by any stated deadline and at your expense. We may be able to assist you with this process but any liability incurred to a carrier for haulage charges is solely your responsibility.

6. LOSS AND DAMAGE OF GOODS

(a) Loss and Damage Warranty - Dreweatts is not authorised by the FCA to provide insurance to its clients, and does not do so. However Dreweatts for its own protection assumes liability for property consigned to it at the lower pre-sale estimate until the hammer falls. To justify accepting liability, Dreweatts makes a charge of 1.5% of the hammer price plus VAT, subject to a minimum charge of £1.50, or if unsold 1.5% of our lower estimate. The liability assumed by Dreweatts shall be limited to the lower pre-sale estimate or the hammer price if the lot is sold. Dreweatts is not liable for damage to gilded picture frames, plaster picture frames or picture frame glass; if the Lot is or becomes dangerous, we may dispose of it without notice to you in advance in any manner we see fit and will be under no liability for doing so.

(b) If the owner of the goods consigned instructs us in writing not to take such action, the goods then remain entirely at the owner's risk unless and until the property in them passes to the Buyer or they are collected by or on behalf of the owner, and clause 6 (a) is inapplicable.

7. **ILLUSTRATIONS AND PHOTOGRAPHS.** The cost of any illustrations or photographs is borne by you. The copyright in respect of such illustrations and photographs shall be the property of us, the auctioneers, as is the text of the catalogue.

8. **MINIMUM BIDS AND OUR DISCRETION.** Goods will normally be offered subject to a reserve agreed between us before the sale in accordance with clause 9. We may sell Lots below the reserve provided we account to you for the same sale proceeds as you would have received had the reserve been the hammer price. If you specifically give us a "discretion" we may accept a bid of up to 10% below the formal reserve.

9. RESERVES

(a) You are entitled to place prior to the auction a reserve on any lot consigned, being the minimum hammer price at which that lot may be sold. Reserves must be reasonable and we may decline to offer goods which in our opinion would be subject to an unreasonably high reserve (in which case goods carry the storage and loss and damage warranty charges stipulated in these Terms of Consignment).

(b) A reserve once set cannot be changed except with our consent.

(c) Where a reserve has been set which we consider unreasonably high, an unsold charge will be payable in the event that the lots fails to sell, being the agreed selling terms calculated on the reserve, LDW at 1.5% and any photographic charges.

(d) Where a reserve has been placed only we may bid on your behalf and only up to the reserve (if any) and you may in no circumstances bid personally.

(e) Reserves are not usually accepted for lots expected to realise below £100.

10. **ELECTRICAL ITEMS.** These are subject to detailed statutory safety controls. Where such items are accepted for sale you accept responsibility for the cost of

testing by external contractors. Goods not certified as safe by an electrician (unless antiques) will not be accepted for sale. They must be removed at your expense on your being notified. We reserve the right to dispose of unsafe goods as refuse, at your expense.

11. **SOFT FURNISHINGS.** The sale of soft furnishings is strictly regulated by statute law in the interests of fire safety. Goods found to infringe safety regulations will not be offered and must be removed at your expense. We reserve the right to dispose of unsafe goods as refuse, at your expense. The rights of disposal referred to in clause 10 and 11 are subject to the provisions of The Torts (Interference with Goods) Act 1977.

12. **DESCRIPTION.** Please assist us with accurate information as to the provenance, lawful import etc. of goods where this is relevant. There is strict liability for the accuracy of descriptions under modern consumer legislation and in some circumstances responsibility lies with sellers if inaccuracies occur. We will assume that you have approved the catalogue description of your lots and that your lots match those descriptions unless informed to the contrary. Where we are obliged to return the price to the buyer when the lot is a deliberate forgery under Condition 15 of the Conditions of Sale and we have accounted to you for the proceeds of sale you agree to reimburse us the sale proceeds and in any event within 7 days of our written notice to do so.

13. **UNSOLD.** If an item is unsold it may at our discretion be re-offered at a future sale. Where in our opinion an item is unsaleable you must collect such items from the saleroom promptly on being so informed. Otherwise, storage charges may be incurred. We reserve the right to charge for storage in these circumstances at a reasonable daily rate.

14. **WITHDRAWN AND BOUGHT IN ITEMS.** These are liable to incur a charge of 15% commission, 1.5 % Loss and Damage Warranty and any other costs incurred including but not limited to illustration and restoration fees all of these charges being subject to VAT on being bought in or withdrawn after being catalogued.

15. **CONDITIONS OF SALE.** You agree that all goods will be sold on our Conditions of Sale for Public Auctions. In particular you undertake that you have the right to sell the goods either as owner or agent for the owner with good and marketable title and free and clear of any third party rights or claims. You undertake to compensate us and any buyer or third party for all losses liabilities, costs and expenses suffered or incurred arising out of or in connection with any breach of this undertaking. We will also, at our discretion, and as far as practicable, confirm that an item consigned for sale does not appear on the Art Loss register, which is administered by an independent third party.

16. **DUE DILIGENCE CHECKS AND ANTI-MONEY LAUNDERING PROCEDURES.** Under the money laundering regulations in force we are required to carry out relevant due diligence checks. This includes verifying the identity of all customers we transact with as well as any beneficial owners on behalf of whom they may transact. Vendors who are unable to or refuse to supply required identification documents and proof of address will not be able to consign to Dreweatts auctions. Copies of customer due diligence checks will be stored for as long as it is necessary to satisfy legal requirements in an appropriate storage facility, which for the avoidance of doubt may include storage solely in electronic form. We reserve the right to withhold the monies owed until the vendor provides the information necessary to complete the anti-money laundering checks.

17. **AUTHORITY TO DEDUCT COMMISSION AND EXPENSES AND RETAIN PREMIUM AND INTEREST**

(a) You authorise us to deduct commission at the stated rate and all expenses incurred for your account from the hammer price and consent to our right to retain beneficially the premium paid by the buyer in accordance with our Conditions of Sale for Public Auctions and any interest earned on the sale proceeds until the date of settlement.

(b) In case of lots unsold at auction you authorise us at our discretion to reoffer such lots and negotiate a sale within seven days of the auction date, in which case the same charges will be payable as if such lots had been sold at auction and so far as appropriate these Terms apply.

18. **WAREHOUSING.** We disclaim all liability for goods delivered to our saleroom without sufficient sale instructions and reserve the right to make minimum warehousing charge of £10 per lot per day. Unsold lots are subject to the same charges if you do not remove them within a reasonable time of notification. If not removed within three weeks we reserve the right to sell them and defray charges from any net proceeds of sale or at your expense to consign them to the local authority for disposal.

19. **SETTLEMENT.** After sale settlement of the net sum due to you normally takes place within 28 days of the sale unless the buyer has not paid for the goods or the checks necessary under the current Money Laundering Regulations have not been completed. In this case no settlement will then be made but we will take your instructions in the light of our Conditions of Sale for Public Auctions. You authorise any sums owed by you to us on other transactions to be deducted from the sale proceeds. You must note the liability to reimburse the proceeds of sale to us as under the circumstances provided for in Condition 12 above. You should therefore bear this potential liability in mind before parting with the proceeds of sale until the expiry of 28 days from the date of sale.

CONDITIONS OF SALE FOR PUBLIC AUCTIONS

Dreweatts carries on business with bidders, buyers and all those present in the auction room prior to or in connection with a sale by auction at our salerooms on our Auction Terms and Conditions or Public Auctions including these Conditions of Sale for Public Auctions and all bidders, buyers and others participating in a public auction accept that these terms apply to the exclusion of any terms and conditions contained in any of those person's own documents even if the same purport to provide that that person's own or some other terms prevail. Any particular public auction and/or any particular lot in an auction may be subject to different or additional terms which will be published in our online auction catalogue. Please note that our Auction Terms and Conditions including these Conditions of Sale for Public Auctions relate to auctions held in one of our salerooms and we have separate terms and conditions for our online auctions.

1. DEFINITIONS

In these Conditions:

- (a) "auctioneer" means the firm of Dreweatts or its authorised auctioneer, as appropriate;
- (b) "deliberate forgery" means an imitation made with the intention of deceiving as to authorship, origin, date, age, period, culture or source but which is unequivocally described in the catalogue as being the work of a particular creator and which at the date of the sale had a value materially less than it would have had if it had been in accordance with the description;
- (c) "hammer price" means the level of bidding reached (at or above any reserve) when the auctioneer brings down the hammer;
- (d) "terms of consignment" means the stipulated terms and rates of commission on which Dreweatts accepts instructions from sellers or their agents;
- (e) "total amount due" means the hammer price in respect of the lot sold together with any premium, Value Added Tax chargeable and any additional charges payable by a defaulting buyer under these Conditions;
- (f) "sale proceeds" means the net amount due to the seller, being the hammer price of the lot sold less commission at the stated rate, Value Added Tax chargeable and any other amounts due to us by the seller in whatever capacity and however arising;
- (g) "You", "Your", etc. refer to the buyer as identified in Condition 2.
- (h) The singular includes the plural and vice versa as appropriate.

2. BIDDING PROCEDURES AND THE BUYER

- (a) Bidders are required to register their particulars before bidding by completing a sale registration form and to satisfy any security arrangements before entering the auction room to view or bid;
- (b) Under the money laundering regulations in force we are required to verify the identity of all customers we transact with as well as any beneficiaries on behalf of whom they may transact. Customers who are unable to or refuse to supply required identification documents and proof of address will not be able to bid in Dreweatts auctions. Copies of customer due diligence checks will be stored for as long as it is necessary to satisfy legal requirements in an appropriate storage facility which for the avoidance of doubt may include storage solely in electronic form;
- (c) the maker of the highest bid accepted by the auctioneer conducting the sale shall be the buyer at the hammer price and any dispute about a bid shall be settled at the auctioneer's absolute discretion by reoffering the Lot during the course of the auction or otherwise. The auctioneer shall act reasonably in exercising this discretion.
- (d) Bidders shall be deemed to act as principals;
- (e) Our right to bid on behalf of the seller is expressly reserved up to the amount of any reserve and the right to refuse any bid is also reserved.

3. **INCREMENTS.** Bidding increments shall be at the auctioneer's sole discretion.

4. **THE PURCHASE PRICE.** The buyer shall pay the purchase price together with a premium thereon of 30% which shall include VAT on the premium at the rate imposed by law. The buyer will also be liable for any royalties payable under Droit de Suite as set out under Information for Buyers.

5. **VALUE ADDED TAX.** Value Added Tax on the hammer price is imposed by law on all items affixed with a dagger (†) or double dagger (‡). Value Added Tax is charged at the appropriate rate prevailing by law at the date of sale and is payable by buyers of relevant Lots. (Please refer to "Information for Buyers" for a brief explanation of the VAT position).

6. PAYMENT

(a) Immediately a Lot is sold you will:

- (i) give to us, if requested, proof of identity, and
- (ii) pay to us the total amount due or in such other way as is agreed by us.

(b) Any payments by you to us may be applied by us towards any sums owing from you to us on any account whatever without regard to any directions of you or your agent, whether expressed or implied.

(c) In order to comply with money laundering regulations we reserve the right to require proof of source of funds and/or confirmation of the nature and source of wealth for all receipts of monies from clients directly or from third parties for payments on behalf of clients. Lots will only be released once we have completed necessary checks under the current Money Laundering Regulations.

7. TITLE AND COLLECTION OF PURCHASES

(a) The ownership of any Lots purchased shall not pass to you until you have made payment in full to us of the total amount due.

(b) You shall at your own risk and expense take away any lots that you have purchased and paid for not later than 3 working days following the day of the auction after which you shall be responsible for any removal, storage and insurance charges.

(c) No purchase can be claimed or removed until it has been paid for and we have completed necessary checks under the current Money Laundering Regulations.

8. REMEDIES FOR NON-PAYMENT OR FAILURE TO COLLECT PURCHASES

(a) If any Lot is not paid for in full and taken away in accordance with these Conditions or if there is any other breach of these Conditions, we, as agent for the seller and on our own behalf, shall at our absolute discretion and without prejudice to any other rights we may have, be entitled to exercise one or more of the following rights and remedies:

- (i) to proceed against you for damages for breach of contract;
- (ii) to rescind the sale of that Lot and/or any other Lots sold by us to you;
- (iii) to resell the Lot (by auction or private treaty) in which case you shall be responsible for any resulting deficiency in the total amount due (after crediting any part payment and adding any resale costs). Any surplus so arising shall belong to the seller;
- (iv) to remove, store and insure the Lot at your expense and, in the case of storage, either at our premises or elsewhere;
- (v) to charge interest at a rate not exceeding 1.5% per month on the total amount due to the extent it remains unpaid for more than 3 working days after the sale;
- (vi) to retain that or any other Lot sold to you until you pay the total amount due;
- (vii) to reject or ignore bids from you or your agent at future auctions or to impose conditions before any such bids shall be accepted;
- (viii) to apply any proceeds of sale of other Lots due or in future becoming due to you towards the settlement of the total amount due and to exercise a lien (that is a right to retain possession of) any of your property in our possession for any purpose until the debt due is satisfied.

(b) We shall, as agent for the seller and on our own behalf pursue these rights and remedies only so far as is reasonable to make appropriate recovery in respect of breach of these conditions.

9. **THIRD PARTY LIABILITY.** All bidders, buyers and other members of the public on our premises are there at their own risk and must note the lay-out of the accommodation and security arrangements. Accordingly neither the auctioneer nor our employees or agents shall incur liability for death or personal injury or for the safety of the property of persons visiting prior to or at a sale (except in each case as may be required by law by reason of our negligence)

10. **COMMISSION BIDS.** Whilst prospective buyers are strongly advised to attend the auction and are always responsible for any decision to bid for a particular Lot and shall be assumed to have carefully inspected and satisfied themselves as to its condition, we will if so instructed clearly and in writing execute bids on their behalf. Neither the auctioneer nor our employees or agents shall be responsible for any failure to do so.

Where two or more commission bids at the same level are recorded we reserve the right in our absolute discretion to prefer the first bid so made.

11. **WARRANTY OF TITLE AND AVAILABILITY.** The seller warrants to the auctioneer and you that the seller is the true owner of the property consigned or is properly authorised by the true owner to consign for sale and is able to transfer good and marketable title to the property free from any third party claims.

Save as expressly set out above, all other warranties, conditions or other terms which might have effect between the Seller and you, or us and you, or be implied or incorporated by statute, common law or otherwise are excluded to the fullest extent permitted by law.

12. **AGENCY.** The auctioneer normally acts as agent only and disclaims any responsibility for default by sellers or buyers.

13. **TERMS OF SALE.** The seller acknowledges that Lots are sold subject to the stipulations of these Conditions in their entirety and on the Terms of Consignment for Public Auctions as notified to the consignor at the time of the entry of the Lot.

14. DESCRIPTIONS AND CONDITION

(a) Whilst we seek to describe lots accurately, it may be impractical for us to carry out exhaustive due diligence on each lot. Prospective buyers are given ample opportunities to view and inspect before any sale and they (and any independent experts on their behalf) must satisfy themselves as to the accuracy of any description applied to a lot. Prospective buyers also bid on the understanding that, inevitably, representations or statements by us as to authorship, genuineness, origin, date, age, provenance, condition or estimated selling price involve matters of opinion. We undertake that any such opinion shall be honestly and reasonably held and accept liability for opinions given negligently or fraudulently. Subject to the foregoing neither we the auctioneer nor our employees or agents nor the seller accept liability for the correctness of such opinions and all conditions and warranties, whether relating to description, condition or quality of lots, express, implied or statutory, are hereby excluded. Dreweatts is not liable for damage to gilded picture frames, plaster picture frames or picture frame glass; if the Lot is or becomes dangerous, we may dispose of it without notice to you in advance in any manner we see fit and will be under no liability for doing so. This Condition is subject to the next following Condition concerning deliberate forgeries and applies save as provided for in paragraph 6 "information to buyers".

(b) Private treaty sales made under these Conditions are deemed to be sales by auction for purposes of consumer legislation.

15. **FORGERIES.** Notwithstanding the preceding Condition, any Lot which proves to be a deliberate forgery (as defined) may be returned to us by you within 21 days of the auction provided it is in the same condition as when bought, and is accompanied by particulars identifying it from the relevant catalogue description and a written statement of defects. If we are satisfied from the evidence presented that the Lot is a deliberate forgery we shall refund the money paid by you for the Lot including any buyer's premium provided that (1) if the catalogue description reflected the accepted view of scholars and experts as at the date of sale or (2) you personally are not able to transfer a good and marketable title to us, you shall have no rights under this condition.

The right of return provided by this Condition is additional to any right or remedy provided by law or by these Conditions of Sale.

16. **PRIVACY NOTICE.** We will hold and process any personal data in relation to you in accordance with our current privacy policy, a copy of which is available on our website www.dreweatts.com/privacy-policy/.

GENERAL

17. We shall have the right at our discretion, to refuse admission to our premises or attendance at our auctions by any person.

18. (a) Any right to compensation for losses liabilities and expenses incurred in respect of and as a result of any breach of these Conditions and any exclusions provided by them shall be available to the seller and/or the auctioneer as appropriate.

(b) Such rights and exclusions shall extend to and be deemed to be for the benefit of employees and agents of the seller and/or the auctioneer who may themselves enforce them.

19. Any notice to any buyer, seller, bidder or viewer may be given by first class mail, email or Swiftmail in which case it shall be deemed to have been received by the addressee 48 hours after posting.

20. Special terms may be used in catalogue descriptions of particular classes of items in which case the descriptions must be interpreted in accordance with any glossary appearing at the commencement of the catalogue.

21. Any indulgence extended to bidders, buyers or sellers by us notwithstanding the strict terms of these Conditions or of the Terms of Consignment shall affect the position at the relevant time only and in respect of that particular concession only; in all other respects these Conditions shall be construed as having full force and effect.

22. These Conditions shall be governed by and construed in accordance with English law and the parties irrevocably submit to the exclusive jurisdiction of the English courts.

DREWEATTS

NEWBURY

Dreweatts
Donnington Priory
Newbury
Berkshire RG14 2JE
+44 (0) 1635 553 553
info@dreweatts.com

DEPUTY CHAIRMAN

Will Richards
James Nicholson

LONDON

Dreweatts / Bloomsbury Auctions
16-17 Pall Mall
St James's
London SW1Y 5LU
+44 (0) 20 7839 8880
info@bloomsburyauctions.com
info@dreweatts.com

HAMBRIDGE LANE

Dreweatts
1 Hambridge Lane
Newbury
Berkshire RG14 5TU
+44 (0) 1635 553 553
info@dreweatts.com

GROUP DEPARTMENTS

AUTOGRAPHS AND EPHEMERA

Ania Hanrahan
ahanrahan@dreweatts.com

ASIAN CERAMICS AND WORKS OF ART

Mark Newstead
Dr Yingwen Tao
Lavinia Jin
asian@dreweatts.com

BLOOMSBURY AUCTIONS BOOKS AND MANUSCRIPTS

Rupert Powell
Dido Arthur
Justin Phillips
Max Hasler
Richard Caroll
info@bloomsburyauctions.com

BRITISH AND EUROPEAN CERAMICS AND GLASS

Mark Newstead
Geoffrey Stafford Charles
interiors@dreweatts.com

BRITISH AND EUROPEAN SCULPTURE AND WORKS OF ART

Silas Currie Leigh-Wood
sculpture@dreweatts.com

CLOCKS AND SCIENTIFIC INSTRUMENTS

Leighton Gillibrand
clocks@dreweatts.com

COUNTRY SPORTING

Geoffrey Stafford Charles
gscharles@dreweatts.com

DECORATIVE ARTS AND MODERN DESIGN

Geoffrey Stafford Charles
Ashley Matthews
interiors@dreweatts.com

FURNITURE AND CARPETS

Ben Brown
Elaine Binning
Ashley Matthews
William Turkington
Mitchell Tompkins
furniture@dreweatts.com

HOUSE SALES AND PRIVATE COLLECTIONS

Joe Robinson
Eloise Kerr-Smiley
Arabella Methuen
housesales@dreweatts.com

JEWELLERY, SILVER, WATCHES AND OBJECTS OF VERTU

James Nicholson
Nick Mann
Tessa Parry
jsw@dreweatts.com

LIVE STEAM AND MODEL ENGINEERING WORKS OF ART

Lucie Hobbs
transport@dreweatts.com

MODERN AND CONTEMPORARY ART

Jennie Fisher
Francesca Whitham
Will Porter (Business Development)
pictures@dreweatts.com

OLD MASTERS, BRITISH AND EUROPEAN ART

Brandon Lindberg
Lucy Darlington
Daniele Amesso
pictures@dreweatts.com

WINE

Mark Robertson
Caroline Shepherd
Violette Jongbloed
Dianne Wall
wine@dreweatts.com

BUSINESS DEVELOPMENT

Will Richards
Will Porter
Joe Robinson
Ana Moas
Isabelle Rietkerk
irietkerk@dreweatts.com

CONSIGNMENT MANAGEMENT

Lucie Hobbs
Christy Chambers
consignments@dreweatts.com

VALUATIONS FOR PROBATE, INSURANCE AND CGT

Emma Terry
Janice Cliff
valuations@dreweatts.com

DREWEATTS

EST. 1759