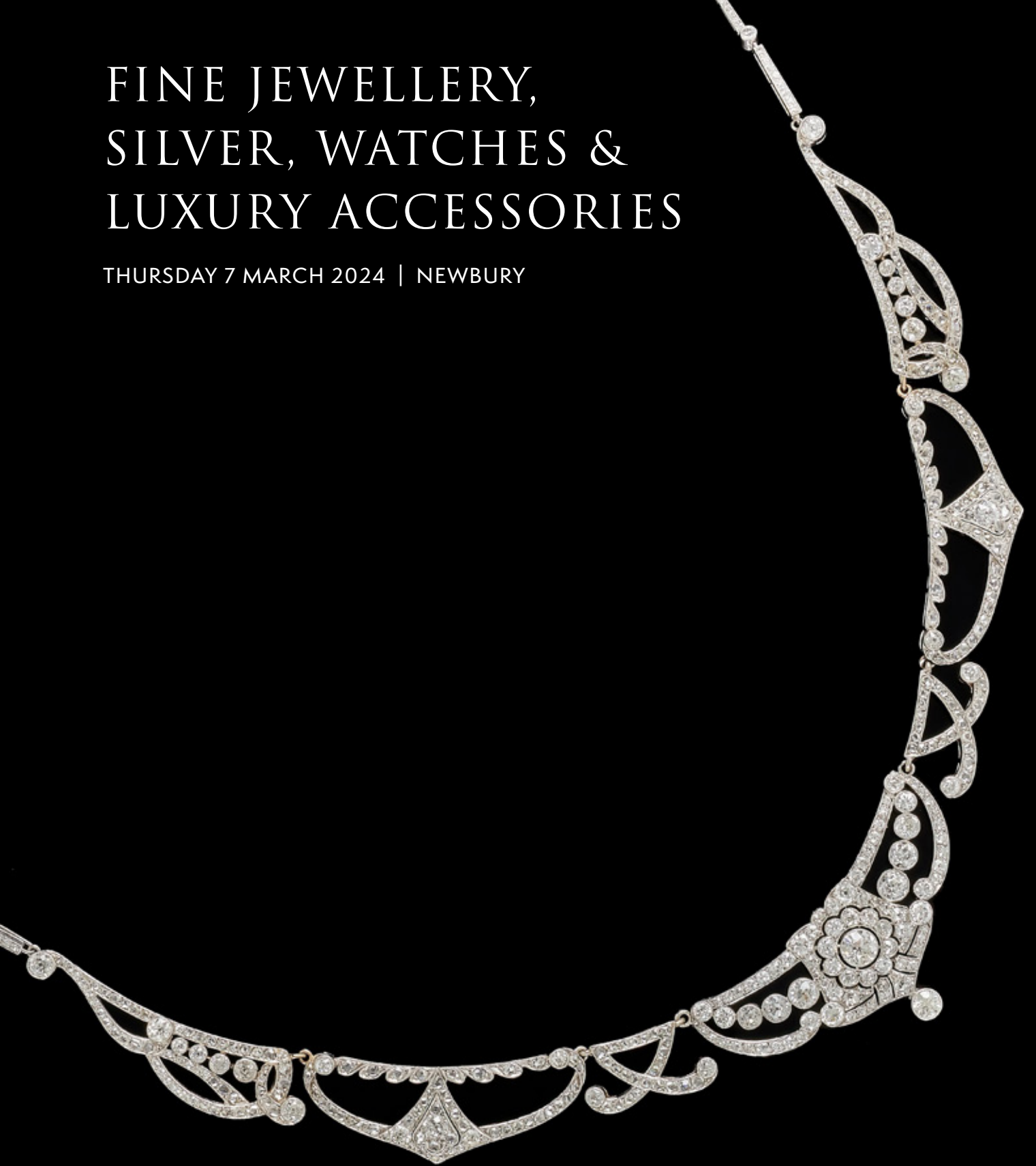


FINE JEWELLERY,  
SILVER, WATCHES &  
LUXURY ACCESSORIES

THURSDAY 7 MARCH 2024 | NEWBURY



DREWEATTS

EST. 1759



# FINE JEWELLERY, SILVER, WATCHES & LUXURY ACCESSORIES

THURSDAY 7 MARCH 2024 | NEWBURY

LOTS 1-265 | 10.30AM

## VIEWING IN LONDON (HIGHLIGHTS)

Tuesday 27 February: 10am–4pm

Wednesday 28 February: 10am–4pm

## VIEWING IN NEWBURY (FULL SALE)

Saturday 2 March: 10am–3pm

Sunday 3 March: 10am–3pm

Monday 4 March: 10am–4pm

Tuesday 5 March: 10am–4pm

Wednesday 6 March: 10am–4pm

## SPECIALISTS

James Nicholson FGA, DGA

Charlotte Peel GG

Nick Mann

Tessa Parry FGA, DGA

Ian Pickford (Consultant, Silver)

Terry Taylor MBHI (Consultant, Watches)

## ENQUIRIES & CONDITION REPORTS

[jsw@dreweatts.com](mailto:jsw@dreweatts.com)

Front cover: Lot 118

Opposite: Lot 61

Back cover: Lot 116

Catalogues £15 (£20 by post)

NEWBURY

Donnington Priory, RG14 2JE

+44 (0) 1635 553 553

LONDON

16 Pall Mall, SW1Y 5LU

+44 (0) 20 7839 8880

[info@dreweatts.com](mailto:info@dreweatts.com)

[dreweatts.com](http://dreweatts.com)

# DREWEATTS

EST. 1759



## REGISTRATION AND BIDDING

We advise bidders to register at least 48 hours in advance of the auction as we will need to complete Know Your Client checks on all registrants. We allow commission (or absentee bids), telephone bids, live online bidding, and in person bidding. More information is available in our Terms of Sale at the back of this catalogue, and on our website.

## BUYER'S PREMIUM

26% of hammer price up to £20,000 (31.2% including VAT), plus

25% of hammer price from £20,001 up to £500,000 (30% including VAT), plus

20% of hammer price from £500,001 up to £1,000,000 (24% including VAT), plus

12.5% of hammer price in excess of £1,000,000 (15% including VAT)

## ADDITIONAL CHARGES AND SYMBOLS

λ - Indicates that this lot may be subject to Droit de Suite (Artist Resale Right) royalty charges.

Y - Indicates that this lot may be subject to CITES regulations when exported.

† - Indicates that VAT is payable by the purchaser at the standard rate of 20% on the hammer price as well as being charged on the buyers' premium.

θ - Indicates that the lot is a zero rated item and therefore subject to buyer's premium of 26% exclusive of VAT (0% VAT).

‡ - Indicates that the lot is being sold whilst subject to temporary importation and that VAT is due at the reduced rate (5%).

Ω - Indicates that the lot has been imported from outside the UK and is liable to the standard rate of Import VAT currently 20% on the hammer price.

β - Indicates that the lot is offered in Bond. This applies to wine. Bidding will be at duty paid prices other than for those lots marked 'IN BOND/β'.

## PAYMENT

If you are successful, you will receive an invoice to your registered email address, which will include detailed payment and collection information. If you wish to see this in advance, please visit our website. Items must be paid for in full and Know Your Client checks must be complete before we can release any purchases; first time buyers may also be subject to restrictions on the methods of payment we can accept. Please confirm this with the saleroom prior to collection.

## COLLECTIONS, SHIPPING AND STORAGE

Unless otherwise stated below, purchases are available for collection from Dreweatts Donnington Priory salerooms from Monday to Friday (9am-5pm) by appointment only. If you wish to have the item shipped to you, please see the list of suggested shippers on our website.

Due to a busy schedule of sales, we are unable to store sold items at the salerooms; any items not collected after 4 working days of the sale (by 4pm) are removed to commercial storage and subject to a storage charge of £20 (plus VAT) per lot as well as a further storage charge of £3 (plus VAT) per lot per day thereafter. Please note for large consignments there may be additional charges. These charges will be the sole liability of the purchaser and will be billed directly to them by Sackville-West Moving & Storing. On payment of all sales and storage costs, items will be available for collection by appointment from Sackville-West Moving & Storing (Andover SP10 3SA).

## CONDITIONS OF SALE

Any registration to bid is subject to acceptance of our Auction Terms and Conditions and Privacy Policy. Both are available on our website.

## CONDITIONS OF ITEMS

Buyers must satisfy themselves to the condition of any item prior to bidding. Detailed condition reports and additional images are available upon request.

## EXPORT OF ITEMS

If you intend to export goods out of the UK, we ask you to satisfy yourselves as to whether there is prohibition on exporting goods of that character e.g. if the goods contain prohibited materials such as ivory or they require an Export Licence on the grounds of exceeding a specific age and/or monetary value threshold as set by the Export Licensing unit. We are happy to make the submission of necessary applications on behalf of our buyers, but we will charge for this service only to cover the costs of our time.

## GLOSSARY OF TERMS

Where relevant, for example Picture auctions or Clocks auctions, a glossary of cataloguing terms will be available at the back of our printed catalogues as well as via our website.



1

**1**  
**A GEORGE III SILVER BALUSTER LIDDED TANKARD**  
 MAKER'S MARK I\*M (NOT TRACED), LONDON 1766  
 With a pierced scroll thumb piece to the ogee domed cover, the scroll handle engraved E\*D 1767, the body with a girdle and on a circular moulded spreading foot  
 21cm (8 1/4in) high  
 878g (28.25 oz)

£600-800



3

**3**  
**A PAIR OF GEORGE II IRISH SILVER SHAPED OVAL SAUCE BOATS**  
 THOMAS WALKER, CIRCA 1740  
 With leaf capped double scroll handles, shaped borders, engraved with a crest and armorial, on three shell feet  
 23.5cm (9 1/4in) long  
 1005g (32.3 oz)

£1,200-1,800



4

**4**  
**A GEORGE II SILVER TEA CADDY**  
 PÉZÉ PILLEAU, LONDON 1748  
 With a foliate thumb piece to the stepped rectangular hinged cover, the body chased with a band of flowers and a vacant cartouche  
 11cm (4 1/4in) high  
 280g (9 oz)

£600-800



2

**2**  
**A GEORGE III SILVER TAPERING TANKARD**  
 JOHN SCHOFIELD, LONDON 1795  
 The flat cover with a pierced thumb piece and engraved with a crest, the body with a scroll handle, reeded bands and engraved with an armorial  
 18cm (7in) high  
 841g (30.3 oz)

These separate engravings represent the full armorial of the arms of Thomas Langford BROOKE (1769-1815) of Mere Hall, Knutsford, Cheshire, and his wife the Maria BROUGHTON (1768-1841) daughter of Revd. Sir Thomas BROUGHTON (1749-1813) 6th Baronet of Broughton Staffordshire by Mary WICKER, daughter of John WICKER. They were married in the year 1790.

£700-1,000

**5**  
**A GEORGE II SILVER SHAPED CIRCULAR SALVER**  
 EDWARD FELINE, LONDON 1736  
 With a raised moulded border, engraved with a shell and scroll band, and an armorial, on three scroll feet  
 26cm (10 1/4in) diameter  
 812g (26.1 oz)

These are the marshalled arms of George GREGORY (1697-1758) lately of Harlaxton Manor, Lincolnshire and his wife Anne ORTON (1713-1785) of Whitechapel Middlesex. They were married in 1736 at Harlaxton. This is likely to be a marriage piece.

£500-700



5



6

**6**  
**A GERMAN 17TH CENTURY SILVER GILT SHAPED OVAL BRANDY BOWL**  
 BALTHASAR HAYDT, AUGSBURG CIRCA 1670  
 With a shaped border, twin scroll handles, embossed with a swan and foliage  
 11cm (4 1/4in) long  
 64g (2.05 oz)

£400-600



7

**7**  
**A GEORGE II SILVER WAX JACK**  
 BENJAMIN GODFREY, CIRCA 1740  
 The scroll scissor-action holder with a divided circular pan, a part screw-threaded column, a loop handle and a circular base engraved with an armorial  
 14cm (5 1/2in) high  
 301g (9.7 oz)

**Provenance:**  
 The executor's of the late Derek Strauss

£800-1,200



8

**8**  
**A LATE 17TH CENTURY SILVER GILT BEAKER**  
 POSSIBLY DUTCH, SECOND HALF 17TH CENTURY, UNIDENTIFIED MARKS  
 Engraved with a band of foliate swags, flowers and strapwork, engraved beneath 'Vere Chaplin from E. V. B. Decr. 1874' and 'A.W.' over 'M.W.'  
 14.5cm (5 3/4in) high  
 208g (6.7 oz)

£600-800



10

**10**  
**A GERMAN 18TH CENTURY SILVER AND SILVER GILT CHALICE**  
 MAKER'S MARK A ..., AUGSBURG CIRCA 1760  
 The silver gilt bowl with a band of cherub masks and foliate swags, a conforming knopped finial, to a shaped circular foot embossed with foliage, feathered wings, grapes and wheat sheaf  
 26.5cm (10 1/2in) high  
 656g (21.1 oz)

£1,000-1,500



9

**9**  
**A RUSSIAN SILVER AND SILVER GILT MARRIAGE BEAKER**  
 MAKER'S MARK HM (NOT TRACED), ST. PETERSBURG 1787  
 Engraved with a monogram and an armorial within scrolled oval reserves, the base inset with a coin  
 17cm (6 3/4in) high  
 432g (13.9 oz)

£800-1,200



**11**  
**A PAIR OF GEORGE II CAST SILVER CANDLESTICKS**  
 WILLIAM GOULD, LONDON 1750  
 With shaped circular and shell sconces, reel capitals, knopped stems to shaped circular and shell bases, engraved with a crest  
 21.5cm (8 1/2in) high  
 1153g (37.1 oz)

The crest for CHAPLAIN and HODSON.

£1,000-1,500



**12**  
**A PAIR OF GEORGE II CAST SILVER CANDLESTICKS**  
 JOHN CAFE, LONDON 1756  
 With shaped circular and shell sconces, reel capitals, knopped stems to shaped circular and shell bases, engraved with a crest  
 23cm (9in) high  
 1057g (34 oz)

The crest for CHAPLAIN and HODSON.

£1,000-1,500



**13**  
**A SET OF FOUR GEORGE III IRISH SILVER CANDLESTICKS**  
 POSSIBLY BY WILLIAM HOMER, DUBLIN CIRCA 1760  
 With shaped circular sconces, reel capitals, knopped stems to shaped circular bases, with shell decoration and engraved with a crest  
 25cm (9 3/4in) high  
 2333g (75 oz)

£3,000-5,000

14

**A GEORGE IV SILVER SHAPED OVAL SOUP TUREEN AND COVER**

THOMAS WIMBUSH, LONDON 1829, THE LINER BY BENJAMIN PRESTON, LONDON 1831

The domed cover with a demi lion crest finial and a moulded border, the body with twin branch loop handles issuing from oak leaves and acorns, a chased bead and quatrefoil border, and on four foliate scroll feet, engraved with two armorials to both the cover and the body, the first armorial of the East India Company, granted in 1696, and engraved 'Presented by the Honorable East India Company', the second armorial is for the Bosanquet family, the shaped oval liner engraved with a crest  
44cm (17 1/4in) long  
5501g (176.9 oz) gross

**Provenance:**

Sale, Sotheby's, 20th November 1986, lot 231

The Bosanquet family were Huguenot descendants of David du Mont de BOSANQUET (1661-1732) born in Lunel, Languedoc-Roussillon, France, who fled to London in 1698, where he married Elizabeth HAYS (1676-1737). The family were merchants and financiers and established themselves in England, with Richard BOSANQUET (1735-1809) becoming a director of the East India Company and Samuel BOSANQUET (1744-1806) becoming the Governor of the Bank of England.

The armorial for the BOSANQUET family has blazon, and the engraving shows the BOSANQUET arms as a quarterly, confirming that the BOSANQUET family member who owned the arms was a descendant of Samuel BOSANQUET (1700-1765) and Mary DUNSTER (1712-1765).

For further details of the armorials, please see our website.

£8,000-12,000



14



**15**  
**A PAIR OF QUEEN ANNE SCOTTISH SILVER**  
**LIGHTHOUSE CASTERS**  
**ROBERT BRUCE, EDINBURGH 1702**  
 With domed finials to the pierced domed covers,  
 gadrooned borders, engraved with a crest, a girdle  
 and on a gadrooned circular foot  
 15cm (6in) high  
 318g (10.2 oz)

This is the crest of the ERSKINE family of Alva co. Stirling. They were created in 1666  
 Baronets of Alva in the Baronetage of Nova Scotia. In 1702 the incumbent was Sir John  
 ERSKINE (1672-1739) 3rd Baronet, who was the son of Sir Charles ERSKINE (1643-1690)  
 1st Baronet and MP by Christian DUNDAS daughter of Sir James DUNDAS of Arniston. He  
 had succeeded to the Baronetcy after the death of his elder brother, Sir James ERSKINE  
 (1760-1693) 2nd Baronet, who was killed at the battle of Landon. He married Catherine  
 SINCLAIR daughter of Lord SINCLAIR.

£2,000-3,000



**16**  
**TWO CASED GEORGE III SILVER TEA CADDIES**  
**FRANCIS BUTTY & NICHOLAS DUMEE,**  
**LONDON 1766**  
 With foliate finials to the chased domed covers,  
 the bodies with beaded borders, chased with  
 foliate bands, wrythen fluted and beaded  
 decoration, engraved with a crest and on  
 conforming shaped circular feet  
 19cm (7 1/2in) high  
 895g (28.8 oz)

The leather case with key lock clasp and on four ball and claw feet

This crest is associated with the many differenced variations of the arms of the  
 HUNGERFORD family. They were descendants of the Barons Hungerford, in particular  
 Sir Walter HUNGERFORD (1378-1449) KG of Farley Castle, Somerset Lord Treasurer.  
 There are many branches of the family including the Barons of Heytesbury and families  
 of Down Ampney and Winrush, Gloucestershire and Calne, Wiltshire and others.

£2,000-3,000



THE PRIVATE COLLECTION OF PABLO BRONSTEIN  
 LOTS 17-40



17

**17**  
 A CHARLES II SILVER MOUNTED PIN CUSHION  
 BENJAMIN BRADFORD, LONDON 1679  
 The rectangular body with canted corners, a central red velvet  
 cushion, engraved with birds and foliage, on four scroll feet  
 19cm (7 1/2in) long  
 Loaded

£2,000-3,000

**18**  
 THREE QUEEN ANNE SILVER BRITANNIA STANDARD TAZZAS  
 CIRCA 1702  
 With gadrooned borders, engraved with a monogram within foliate  
 swag border, on a lobed circular pedestal feet  
 13.5cm (5 1/4in) diameter  
 563g (18.12 oz)

£1,800-2,200



18



19

**19**  
 A GEORGE II SILVER SHAPED OBLONG INKSTAND  
 JOHN WHITE (I), LONDON 1733  
 With a raised moulded border, engraved with a crest and armorial  
 (worn) and on four dolphin feet, with an inkwell and pounce pot,  
 the ink well hallmarked London 1730 and with a glass liner  
 22cm (8 3/4in) long  
 772g (24.85 oz)

Together with an associated unmarked bell

Provenance:  
 Cheffins, The Fine Art Sale, 15th June 2016, Lot 402

£600-800

**20**  
 AN EARLY 18TH CENTURY LIEGE SILVER SHAPED OVAL  
 BAPTISMAL BOWL  
 MAKER'S MARK CROWNED GD, LETTER K, LIEGE MARK,  
 EAGLE 1711  
 With a shaped border, engraved with a strapwork and foliate band,  
 the centre engraved HIS  
 38cm (15in) long  
 1048g (33.7 oz)

Provenance:  
 Reeman Dansie, East Anglian, Fine Art & Antiques Sale,  
 26th April 2022, Lot 265

£2,000-3,000



20



21

**21**  
A GEORGE II SILVER COFFEE POT  
BENJAMIN GIGNAC, LONDON 1757  
With a bud finial to the wrythen domed cover, gadrooned border and wooden double scroll handle, the wrythen body engraved with an armorial and on a circular pedestal foot  
27cm (10 1/2in) high  
968g (31.15 oz) gross

£500-700



22

**22**  
A SILVER TEA URN  
UNMARKED, CIRCA 1760  
With a baluster finial to the domed cover, the body with twin beaded scroll handles, engraved with an armorial, chased with grape vine decoration, on three scroll legs terminating on foliate feet  
53.5cm (21 1/4in) high  
2217g (71.29 oz) gross

£1,000-1,500



24

**23**  
A GEORGE III SILVER OGEE BALUSTER COFFEE POT  
THOMAS WHIPHAM & CHARLES WRIGHT, LONDON 1767  
Chased with chinoiserie decoration, a seated figure terminal to the domed cover, a wooden double scroll handle, engraved with a motto and crest, on a circular pedestal foot  
31cm (12 1/4in) high  
1128g (36.3 oz) gross

Provenance:  
Mellors & Kirk, Fine Art, Antiques & Collectors, 8th March 2022, Lot 197

£1,000-1,500

**24**  
A GEORGE III SILVER WRYTHEN  
BALUSTER EWER  
MAKER'S MARK I.B OVER W.I  
(NOT TRACED), LONDON CIRCA 1765  
With a foliate finial to the domed cover, a wicker wrapped scroll handle, the body with alternating beaded and foliate decoration, to a conforming circular moulded foot, engraved 'To my Godson Dudley Churchill Marjoribanks on his baptism from his Grandfather and Godfather Marlborough. 1874.'  
33cm (13in) high  
1180g (37.95 oz) gross

Provenance:  
Chiswick Auctions, Silver & Objects of Vertu, 24th August 2020, Lot 375

£1,500-2,500



25

**25 Y**  
A GEORGE II SILVER BRITANNIA STANDARD KETTLE ON STAND  
AUGUSTINE COURTAULD, LONDON 1730  
With a wicker wrapped swing handle and an ivory finial, the body engraved with baroque strapwork and an armorial, on a shaped circular stand above a burner, on three scroll and shell feet  
33cm (13in) high  
2349g (75.5 oz) gross

Provenance:  
Christie's Interiors - Master & Makers, 25th February 2014, Lot 200

£2,500-3,500



23

26

**A PAIR OF IRISH SILVER GILT CANDLESTICKS**

DUBLIN, NO APPARENT MAKER'S MARK OR DATE LETTER,  
18TH CENTURY

With spool capitals, knopped and turned stems to shaped circular  
moulded bases, with shell and scroll decoration

18cm (7in) high

905g (29.1 oz)

**Provenance:**

Wooley & Wallis, Silver & Objects of Vertu, 17th July 2018, Lot 428

£2,000-3,000



26



27

27  
A GEORGE II SILVER SHAPED  
CIRCULAR SALVER  
GEORGE WICKES, LONDON 1742  
With a cast mask, grape and shell border,  
engraved with a crest and a monogram,  
on four foliate scroll feet  
29cm (11 1/2in) diameter  
897g (28.25 oz)

£600-800



28

28  
A GEORGE III SILVER CIRCULAR  
SALVER  
RICHARD RUGG II, LONDON 1782  
With a raised border, engraved with a  
crest above WC, on three bracket feet  
31cm (12 1/4in) diameter  
914g (29.4 oz)

£400-600



29

29  
A PAIR OF GEORGE II SILVER SHAPED  
CIRCULAR SALVERS  
GEORGE WICKES, LONDON 1747  
With grape vine, mask and shell borders,  
later engraved with a crest, on four vine  
leaf feet  
21cm (8 1/4in) diameter  
812g (26.1 oz)

Provenance:  
Matthew Barton Ltd., European & Asian  
Works of Art, 18th November 2020,  
Lot 404

£1,000-1,500





30

**30**  
A GEORGE III SILVER CASTER  
POSSIBLY ROBERT JONES I, LONDON 1764  
With a foliate finial to the ogee domed  
pierced cover, the lobed and fluted body  
chased with foliage, engraved JMB, on a  
gadrooned and foliate foot  
23.5cm (9 1/4in) high  
462g (14.85 oz)

£300-500



31

**31**  
A GEORGE III SILVER SUGAR CASTER  
MAKER'S MARK OBSCURED, LONDON  
1761, COVER UNMARKED  
With a foliate finial to the pierced domed  
cover, the fluted body with four scroll loop  
handles issuing from shells, embossed with  
floral sprays, reed and stitch bands, engraved  
with an armorial, on a conforming circular foot  
22cm (8 1/2in) high  
455g (14.65 oz)

£700-1,000



32

**32**  
A GEORGE II SILVER SUGAR CASTER  
FREDERICK KANDLER, LONDON 1749,  
COVER UNMARKED  
With a foliate finial to the pierced domed  
cover, the half lobed body with four scroll  
loop handles issuing from shells, engraved  
with a crest and on a circular moulded  
spreading foot  
21cm (8 1/4in) high  
507g (16.3 oz)

**Provenance:**  
Woolley & Wallis, Silver & Objects of Vertu,  
25th January 2022

£700-1,000

**33**  
A GEORGE I SILVER BRITANNIA STANDARD BALUSTER CASTER  
BENJAMIN PYNE, LONDON 1716  
With a bell shaped finial to the pierced domed cover, the body with a girdle,  
engraved with an armorial and on a circular spreading foot  
21cm (8 1/4in) high  
376g (12.1 oz)

£600-800



33

**34**  
A PAIR OF GEORGE II  
SILVER BULBOUS CASTERS  
MAKER'S MARK ...  
W, LONDON 1731  
With bud finials to the pierced  
domed covers, the bodies  
engraved with a coronet  
above a crest, a girdle and  
applied decoration, on circular  
moulded spreading feet  
19.5cm (7 3/4in) high  
803g (25.8 oz)

£800-1,200



34

**35**  
A PAIR OF GEORGE II CAST SILVER BALUSTER SUGAR CASTERS  
PETER ARCHAMBO, MAKER'S MARKS ONLY, LONDON CIRCA 1730  
With bud finials to the pierced domed covers, the bodies applied with scroll  
straps, shells and florals swags to stippled grounds, engraved with a coat of  
arms and on circular spreading feet  
17cm (6 3/4in) high  
747g (24 oz)

**Provenance:**  
Bonhams, Silver and Objects of Vertu including Gold Boxes, 20th October  
2022, Lot 290

£800-1,200



35



36

**36**  
 A GRADUATED PAIR OF GEORGE I SILVER BRITANNIA STANDARD OCTAGONAL BALUSTER CASTERS  
 JOHN FAWDERY, LONDON 1715  
 With orbed finials the pierced domed covers, the bodies with girdles and on octagonal moulded spreading feet, the large caster engraved with an armorial, the smaller with a crest  
 17.5cm (7in) and 15cm (6in) high  
 454g (14.6 oz)

**Provenance:**  
 Bonhams, Silver and Objects of Vertu including Gold Boxes, 20th October 2022

£800-1,200

**38**  
 A WILLIAM III SILVER BRITANNIA STANDARD LIGHTHOUSE CASTER  
 MAKER'S MARK ... V, LONDON 1701  
 With a knopped finial to the pierced and engraved bayonet cover, the body with a girdle and on a gadrooned circular foot  
 15cm (6in) high  
 146g (4.7 oz)

£700-1,000



38

**37**  
 A QUEEN ANNE SILVER BRITANNIA STANDARD CASTER  
 PROBABLY BY PENTECOST SYMONDS, EXETER 1712  
 With a knopped finial to the pierced domed cover and on a circular moulded spreading foot  
 20cm (8in) high  
 272g (8.75 oz)

**Provenance:**  
 Whittons Auctioneers & Valuers, Two Day Christmas Auction, 24th November 2021

£2,000-3,000



37



39

**39**  
 A CHARLES II SILVER CYLINDRICAL CASTER  
 MAKER'S MARK NM ABOVE A STAR, LONDON 1683  
 With a bud finial to the pierced domed bayonet cover, cable twist bands and on a pierced circular foot  
 13.5cm (5 1/4in) high  
 149g (4.8 oz)

See Christies, Important Silver, Objects of Vertu And Russian Works Of Art, 20th April 2000, Lot 282 for a similar example

£800-1,200



**40**  
**A SILVER ARTS AND CRAFTS SUGAR CASTER**  
 OMAR RAMSDEN, LONDON 1930  
 With a pierced stepped cover, the half foliate chased and hammered body on a circular foliate chased foot, engraved beneath 'Omar Ramsden Me Fecit'  
 21cm (8 1/4in) high  
 428g (13.75 oz)

**Provenance:**  
 Woolley & Wallis, Silver & Objects of Vertu, 12th April 2022, Lot 705

£1,000-1,500

40

OTHER PROPERTIES

**41**  
**A PAIR OF SILVER DISHES**  
 OMAR RAMSDEN, LONDON 1937  
 Embossed with roses, engraved beneath Me Fecit Omar Ramsden  
 15cm (6in) diameter  
 354g (11.4 oz)

£700-1,000



41



42

**42**  
**A PAIR OF SILVER MODERNIST MUSTARD POTS**  
 ROBERT WELCH, LONDON 1992  
 With hinged domed covers, engraved with a crest and on circular spreading pedestal feet  
 8.5cm (3 1/4in) high

With two clear glass liners and two mustard spoons by Robert Welch, London 1994, 9.5cm (3 3/4in) long  
 184g (5.9 oz) weighable

£200-300

**43**  
**A PAIR OF SILVER GILT SHELL SHAPED PEDESTAL SALTS**  
 MAPPIN & WEBB, LONDON 1968, STAMPED ASPREY LONDON  
 The shaped borders chased with foliate decoration, on shaped oval foliate bases  
 10cm (4in) long  
 490g (15.75 oz)  
 With an Asprey card box

£300-500



43



44

**44**  
**A PAIR OF SILVER TAPERING CAFE AU LAIT POTS**  
 C. J. VANDER, LONDON 1970  
 With wooden compressed finials to the domed covers and scroll handles  
 24.5cm (9 3/4in) high  
 1197g (38.5 oz) gross

£400-600

**45**  
**A SILVER MODERNIST FOUR PIECE OVAL TEA AND COFFEE SET**  
 ROBERT WELCH, LONDON 1993  
 The tea and coffee pots with wooden oval finials and loop handles, hammered bodies and engraved with a crest  
 The tea pot 24cm (9 1/2in) long, the coffee pot 19cm (7 1/2in) high  
 1644g (52.85 oz) gross

£600-800



45



46

**46**  
A VICTORIAN SILVER TWIN HANDLED TROPHY CUP AND COVER  
CORNELIUS JOSHUA VANDER, LONDON 1899

With a dragon finial holding an unfurled scroll to the domed cover, the body with twin dragon handles, oval panels of chased flowers, two vacant shield shaped reserves, to a stepped circular pedestal foot with a chased husk band  
35cm (13 3/4in) high  
1522g (48.95 oz)

£1,000-1,500



47

**47**  
A CHINESE SILVER TWIN HANDLED CUP AND COVER  
RETAILED BY LEE CHING, CIRCA 1870

The domed cover with a dragon finial among embossed clouds, the body with twin dragon scroll handles, embossed with a battle scene, a bamboo stem and on a circular spreading foot  
30cm 9 1/4in) high  
1378g (44.3 oz)

£1,500-2,500





48

48 Y

**A CONTEMPORARY INDIAN ROSEWOOD, GILT METAL, DIAMOND AND CULTURED PEARL DRESSING TABLE SET**

Comprising a rectangular tray with bark effect gilt metal handles and bun feet, scrolled wire detail to the corners with diamond accents, together with three gilt metal bowls the rosewood covers with cultured pearl finials and diamond accents, and three similar scent bottles

Tray 56cm

With a white leather box and outer card packaging

£700-1,000

49 Y

**A CASED SILVER GILT TOILET SET**

GARRARD & CO. LTD., LONDON 1982

Engraved with Asian figures, birds and buildings, comprising:

Four brushes

Two octagonal glass silver gilt mounted scent bottles

Two twin handled circular bowls and covers

Two octagonal pots and covers

An octagonal casket

An octagonal tray

A silver gilt mounted mirror

A silver gilt mounted hand mirror

A silver gilt mounted and tortoiseshell comb by C. J. Vander Ltd., London 1979

4218g (135.6 oz) weighable

Provenance:

From the Private Collection of a titled family

£5,000-7,000



49



50

**50**  
**A SILVER, GEM SET AND ENAMEL DESK CLOCK**  
 UNMARKED, PROBABLY AUSTRIAN, 19TH CENTURY  
 The clock mounted on an ostrich, with a half seed pearl set bezel, gilt dial, cylinder movement, the ostrich being led on a chain by a native figure, inset with sapphires, half seed pearls, rubies and foil back pink cabochons, mounted on a hexagonal base, inset with lapis lazuli, an enamelled scroll and floral band and on four domed feet  
 14cm (5 1/2in) high  
 With a glass dome

£700-1,000

**51**  
**A NORWEGIAN SILVER AND ENAMEL SILVER THREE PIECE COFFEE SET**  
 GUSTAV HELLSTROM, .925 STANDARD, STAVANGER, EARLY 20TH CENTURY  
 The coffee pot with a domed finial to the domed cover and a scroll handle, enamelled with beaded and foliate bands, on a circular pedestal foot  
 20cm (8in) high  
 690g (22.2 oz) gross

£400-600



51



52

**52**  
**A PAIR OF ITALIAN SILVER COLOURED LEAF SHAPED DISHES**  
 GIANMARIA BUCCELLATI, BOLOGNA POST 1968 .925 STANDARD  
 24cm (9 1/2in) long  
 731g (23.5 oz)  
 Each with a Buccellati card box

£700-1,000



53



**53**  
**A SILVER SURPRISE EGG**  
 STUART DEVLIN, LONDON 1975  
 The cover applied with flowers and the base textured, opening to a butterfly sat on a silver gilt and amethyst flower  
 7.5cm (3in) high  
 170g (5.5 oz) gross  
 With a Stuart Devlin box

£250-350

**54**  
**A LIMITED EDITION SILVER GILT SURPRISE CHRISTMAS CAROL BOX, GOOD KING WENCESLAS**  
 STUART DEVLIN, LONDON 1971, NO. 235/500

The rectangular cover with an applied bow, opening to a figure of Good King Wenceslas  
 6.5cm (2 1/2in) high  
 201g (6.5 oz)  
 With a Stuart Devlin card box

£200-300



54



55



**55**  
**A LIMITED EDITION SILVER GILT SURPRISE CHRISTMAS CAROL BOX, HARK THE HERALD ANGELS SING**  
 STUART DEVLIN, LONDON 1974, NO. 271/500  
 The rectangular cover with applied holly, opening to a singing cherub with a trumpet  
 6.5cm (2 1/2in) high  
 200g (6.45 oz)

£200-300

**56**  
**A LIMITED EDITION SILVER AND ENAMEL COMMEMORATIVE CADDY SPOON**  
 STUART DEVLIN, LONDON 1983, NO. 81  
 Commemorating the 25th anniversary of the Prince of Wales, the handle with the Prince of Wales feathers, 1958 - 1983 and enamelled flowers  
 6.5cm (2 1/2in) long  
 36g (1.15 oz)  
 With a Stuart Devlin box

£80-120



56



57

**57**  
**A SILVER GILT AND ENAMEL SURPRISE EGG**  
 STUART DEVLIN, LONDON 1974, NO. 53  
 Opening to a gnome sat on a toadstool and an enamelled flower  
 8cm (3 1/4in) high  
 153g (4.9 oz) gross  
 With a Stuart Devlin box

£200-300

**58**  
**A SILVER GILT AND ENAMEL SURPRISE JUBILEE EGG**  
 STUART DEVLIN, LONDON 1977, NO. 13  
 The cover chased with the Royal Coat of Arms, shamrocks, thistles and roses, engraved Silver Jubilee 1952 - 21977, opening to a silver gilt, enamel and velvet crown  
 7.5cm (3in) high  
 With a Stuart Devlin box

Together with a textured circular stand by Stuart Devlin, London 1975, 4cm (1 1/2in) diameter, with a Stuart Devlin card box  
 245g (7.9 oz) gross

£300-500



58

**59**  
**A SILVER GILT AND ENAMELLED COMMEMORATIVE TABLE BELL**  
 STUART DEVLIN, LONDON 1973, NO. 27  
 Commemorating the marriage of H. R. H. Princess Anne to Captain Mark Phillips 14.11.73, with a textured body to an enamelled leaf and floral terminal  
 22cm (8 3/4in) high  
 329g (10.55 oz) gross  
 With a Stuart Devlin box

£700-1,000



59



**60**  
**FONTENAY, A LATE 19TH CENTURY JADEITE JADE, RUBY, DIAMOND, PEARL AND ENAMEL CRANE BROOCH CIRCA 1880**  
 The shaped jadeite panel with an applied crane, pavé set with rose cut diamonds, with pavé set ruby and black enamelled legs, standing amongst enamelled foliage, within a circular cut ruby and white, black and pink tipped enamel foliate border, suspending a silver tone pearl with a ruby and diamond accented cap, the reverse stamped FONTENAY FAB and F SAMPLER & Co  
 Size/dimensions: 7.6cm long, pearl 10.3mm wide  
 Gross weight: 32.8 grams

Please note the pearl is untested and unwarranted as natural pearl.

£1,000-1,500

**61**  
**A LATE 19TH CENTURY GOLD, GARNET, TOPAZ AND WHITE ENAMEL FRINGE NECKLACE ATTRIBUTED TO ALFRED PHILLIPS CIRCA 1890**  
 The necklace with alternating cut down collet set circular cut garnets and oval cut golden topaz, with beaded gold flowerhead and polished trapeze shaped panel links between, each gem suspending an alternating golden topaz and garnet drop, with white enamelled leaf and pearl or simulated pearl tops, stamped A.P., to a S shaped hook clasp  
 Size/dimensions: 38.5cm long  
 Gross weight: 38.3 grams

The pearls are untested and unwarranted as natural pearl.

£1,000-1,500

**62**  
**AN EARLY 20TH CENTURY DIAMOND HINGED BANGLE**  
 The graduated old European cut diamonds in squared silver settings, approximately 1.60 carats total, to a pierced gold hinged back, unmarked  
 Size/dimensions: inner width 5.7cm  
 Gross weight: 13.9 grams

£700-1,000

**63**  
**A LATE VICTORIAN DIAMOND DOG ROSE BROOCH CIRCA 1880**  
 The flower head with five pavé set old cut and rose cut diamond gold backed silver petals, centred with an old cut diamond within a surround of rose cut diamond accented stamen, with screw in brooch fitting, in a fitted square leather covered gold tooled case  
 Size/dimensions: 2.5 diameter  
 Gross weight: 8.2 grams

£500-800

**64**  
**A LATE VICTORIAN DIAMOND SET DOG ROSE BROOCH CIRCA 1890**  
 The five petalled flower head set with various old cut diamonds, with a central old cut diamond within rose cut diamond set stamen surround, approximately 7.82 carats total, set in gold backed silver, unmarked  
 Size/dimensions: 4cm wide  
 Gross weight: 14.2 grams

£2,500-3,500

**65**  
**AN EARLY VICTORIAN MULTI GEM CANNETILLE CROSS BROOCH**  
CIRCA 1850

The gold beaded cannetille cross with a central oval cut amethyst and amethyst and aquamarine set arms, each with a turquoise terminal, with chrysoberyl and ruby set sections between, unmarked  
Size/dimensions: 4.9cm wide  
Gross weight: 13.8 grams

£600-800

**66**  
**A LATE VICTORIAN GOLD NECKLACE**  
CIRCA 1880

The polished shaped fringed necklace with bead terminals, to a concealed clasp stamped 15ct  
Size/dimensions: 43.5cm long  
Gross weight: 46.5 grams

£700-1,000

**67**  
**A BANDED AGATE AND ONYX NECKLACE AND LOCKET PENDANT**

The locket with an oval cabochon banded agate, within a surround of oval cabochon banded agates, with an agate set bale, verso with a glazed locket, to an onyx and banded agate bead necklace with reeded gold coloured spacers, the associated ring bolt clasp with French export poinçon  
Size/dimensions: locket 5.7cm long, necklace 45.5cm long  
Gross weight: 93 grams

£700-1,000

**68**  
**A MID VICTORIAN GOLD, TURQUOISE AND DIAMOND BRACELET**

The central circular gold panel with a pavé set bombé circular cabochon turquoise cluster, topped with an old mine and rose cut diamond star, within a rope twist wire accented surround, circular glazed locket compartment verso, with a shaped articulated link bracelet, to a concealed clasp, unmarked  
Size/dimensions: 17cm long  
Gross weight: 29 grams

£800-1,200

**69**  
**A PAIR OF ANTIQUE INTAGLIO AGATE CUFFLINKS**

The oval agate panels carved with various standing deities, within gold closed back settings with chased borders, with belcher link connectors  
Size/dimensions: panels approximately 1.4 to 1.5cm long  
Gross weight: 13.5 grams

Provenance:  
From the Estate of the late Robert Kime

£800-1,200



65



66



67



68



69

70

**A VICTORIAN GARNET AND HALF PEARL PENDANT  
CIRCA 1870**

The polished pear shaped cabochon garnet within a gold rope twist wire setting, with half pearl set foliate pediment and bale, with a glazed compartment verso, suspended from an associated gold rope twist chain, with polished barrel clasp

Size/dimensions: pendant 3.5cm long, chain 40cm long  
Gross weight: 11.5 grams

£300-500

71

**A REGENCY GARNET AND GOLD RIVIERE NECKLACE WITH  
DROP PENDANT**

CIRCA 1820

The flattened garnet set necklace within cut down collet settings, to a concealed box clasp, unmarked, suspending an associated floral garnet pendant, the drop pendant with closed back flower heads at the cardinal points with a central oval cut garnet, with glazed locket verso, in a fitted case

Size/dimensions: 37.5cm long, pendant 4.6cm long  
Gross weight: 25.9 grams

£1,000-1,500

72

**AN ITALIAN MID 19TH CENTURY MICRO MOSAIC BEETLE  
BROOCH**

The circular gold brooch with a micro mosaic of an iridescent beetle, within red, white and blue micro mosaic border with star detail, suspending three tapered micro mosaic drops, the reverse of the brooch and pin with Rome Papel crown gold mark

Size/dimensions: circular panel 3.4cm diameter  
Gross weight: 13 grams

£300-500

73

**A GEORGIAN MULTI GEM SET GIARDINETTO BROOCH  
CIRCA 1800**

The pierced brooch with various gem set flowers within a two colour silver and gold woven style basket, set with rose cut diamonds, emeralds, a ruby and garnets, with later brooch clasp and pin, unmarked

Size/dimensions: 3.9cm long  
Gross weight: 8.9 grams

£600-800

74 Y

**A GEORGE III MOURNING LOCKET PENDANT  
CIRCA 1790**

The oval ivory panel painted en grisaille with mother standing by a three dimensional funerary pyramidal tomb with half pearl finial, with two sections appearing to fall revealing two children inside, one raising a rose cut diamond accented crown to winged putti, memento mori skull to the base and rope twist gold coloured wire and seed pearl accents, trimmed hair decorated ground, under domed glazed panel painted in reverse with a weeping willow, within a black enamelled and gold setting with gilt foliate detail, reeded gold suspension loop, with glazed compartment verso, unmarked

Size/dimensions: 7.8cm long  
Gross weight: 37.6 grams

Please note Dreweatts have applied for a de minimis exemption licence for the ivory in this lot, ref: 3E6D3DZZ

£600-800

75

**A VICTORIAN GARNET AND GOLD BRACELET  
CIRCA 1870**

The central oval cabochon garnet within a rope twist surround, with crossover polished surround, glazed locket compartment verso, pierced foliate shoulders, to a shaped track link bracelet, concealed clasp, unmarked, in original fitted case

Size/dimensions: 17.7cm long  
Gross weight: 51.2 grams

£1,200-1,800

76

**A PAIR OF ENAMEL LORGNETTES ON CHAIN**

The shaped holder enamelled on one side with a bird on pale pink ground, within a black enamelled border with scrolling foliate detail, the other side with a seated person on pale pink ground, within a similar black border, with fold out gold coloured lenses stamped with a French poinçon, suspended from an associated black, blue and pink enamelled panel link chain

Size/dimensions: lorgnettes 7cm long, chain 94cm long  
Gross weight: 41.5 grams

£600-800



77

**A VICTORIAN DIAMOND CLUSTER RING LONDON 1860**

The old European cut diamonds in raised claw settings to 18 carat gold carved scrolled shoulders, approximately 1.00 carat total, to a polished shank

Size/dimensions: finger size N

Gross weight: 5.7 grams

£700-1,000

78

**A DIAMOND PANEL RING**

The rectangular panel set with old European cut diamonds with rose cut diamond accents, approximately 1.50 carats total, to a carved gold shank with applied leaf detail, unmarked

Size/dimensions: finger size R 1/2

Gross weight: 9.2 grams

£800-1,200

79

**HENRY CAPT, GENEVE**

A SWISS GOLD, DIAMOND AND ENAMEL LADY'S KEYLESS WIND FOB WATCH, NO. 42948, CIRCA 1980

Movement: Bi-metallic split balance, flat balance spring, lever escapement

Case: Gold and enamel four piece hinged case, the front cover with a blue enamelled border and set with rose cut diamonds, the back cover painted with a reclined cherub within a rose cut diamond set border

Dial: White

Size: 25mm

Signed: Dial, movement

Accessories: Henry Capt box, suspended on a gold, enamel and diamond set winged brooch

£800-1,200

80

**A LATE VICTORIAN RUBY AND DIAMOND QUATREFOIL BROOCH/PENDANT CIRCA 1890**

The pierced knotted panel set throughout with rose cut and old cut diamonds, old cuts approximately 1.10 carats total, with a central oval cut ruby and circular cut rubies towards the cardinal points, gold backed silver setting, screw in brooch fitting, suspensory hook verso

Size/dimensions: 3.8cm wide

Gross weight: 9.9 grams

£800-1,200

81

**A LATE VICTORIAN DIAMOND AND OPAL CIRCULAR PENDANT/BROOCH CIRCA 1890**

The pierced circular panel centred with a diamond within polished heart shaped opal cluster, within a radiating surround of old cut diamonds and a further border of alternating polished heart shaped opal and old cut diamonds, approximately 0.58 carats total, with a similarly set removable scrolled bale, and screw in brooch fitting

Size/dimensions: pendant 4.2cm long

Gross weight: 13 grams

£600-800

82

**AN EARLY 20TH CENTURY RUBY AND DIAMOND BRACELET**

The bracelet composed of oval panels, the front four set with pear cut ruby and rose cut diamond set quatrefoil flower heads on scrolled engraved ground, with rose cut diamond links between, the back panels engraved with flower heads and scrolled detail, to a concealed clasp, the tongue stamped 18, with an additional link and associated case

Size/dimensions: 16.7cm long

Gross weight: 22.2 grams

£600-800

83

**A 1920S AND LATER FIRE OPAL AND DIAMOND BRACELET**

The collet set graduated buff top circular cut fire opals to pierced gold rectangular links each with a millegrain set eight cut diamond accent, to a later ring bolt clasp, unmarked

Size/dimensions: 18.5cm long

Gross weight: 12.1 grams

£600-800

84

**AN EARLY 20TH CENTURY AND LATER DIAMOND QUESTION MARK STICK PIN**

The millegrained setting with a principal old European cut diamond estimated to weigh 0.35 carats, with further smaller old mine cut diamond accents, with a later stickpin, in an associated stick pin case

Size/dimensions: question mark 2cm long

Gross weight: 2.7 grams

Provenance:

From the Estate of the late Robert Kime

£600-800

85

**MILITARY INTEREST, A DIAMOND AND ENAMEL ROYAL ARTILLERY BROOCH**

The cannon and crown set with eight cut diamonds, with blue enamelled banners with the motto UBIQUE QUO FAS ET GLORIA DUCUNT, with red enamelled crown, unmarked

Size/dimensions: 4.2cm wide

Gross weight: 9.2 grams

£300-500

86

**A DIAMOND AND MOONSTONE CLUSTER DRESS**

The central oval cabochon moonstone within a surround of old cut diamonds, approximately 1.44 carats total, closed backs, to bifurcated shoulders, unmarked

Size/dimensions: finger size M 1/2

Gross weight: 5.9 grams

£600-800



87

**A DIAMOND HEART PENDANT**

The heart shaped pendant pavé set with old European cut diamonds, approximately 4.50 carats total, the gold coloured back stamped 15ct, with a marquise shaped diamond accented bale

Size/dimensions: 3.7cm long

Gross weight: 12.2 grams

£1,200-1,800

88

**A TURQUOISE AND DIAMOND BOW NECKLACE**

The front panel in the form of a bow, suspending a heart shaped old cut diamond and cabochon turquoise cluster drop, between scrolled diamond links, approximately 0.73 carats total, to a cabochon turquoise and scrolled gold coloured link back chain, to a box clasp, unmarked

Size/dimensions: 42.7cm long

Gross weight: 19.2 grams

£800-1,200

89

**A TWO ROW CULTURED PEARL NECKLACE TO A DIAMOND BOW PANEL**

The uniform cultured pearls approximately 8.5mm diameter on knotted strands, to an oval cut diamond and old cut diamond set bow, closed back settings, with double ring bolt clasps

Size/dimensions: shortest length 57cm long

Gross weight: grams

£1,000-1,500

90

**A MID 20TH CENTURY DIAMOND SET GIARDINETTO BROOCH**

The graduated pear and trapeze shaped rose cut diamonds in closed back silver coloured setting, with French mixed metal poinçon

Size/dimensions: 2.9cm long

Gross weight: 10.3 grams

£2,000-3,000

91

**A PAIR OF ROSE CUT DIAMOND EAR PENDANTS**

The floral garland drop panels with a central rose cut diamond to articulated bow surmounts, the silver coloured settings with closed gold coloured backs, the shepherds hook fittings with Netherlands post 1953 silver import mark and 585 common convention mark

Size/dimensions: 7cm long

Gross weight: 22.6 grams

£1,500-2,000

92

**A STAR SAPPHIRE AND DIAMOND CLUSTER DRESS RING**

The circular sugarloaf cabochon sapphire within a surround of old European cut diamonds, approximately 1.20 carats total, the shank stamped 18ct

Size/dimensions: finger size R

Gross weight: 15.9 grams

£1,200-1,800

93

**A PAIR OF DIAMOND FROG BROOCHES**

The silver coloured frogs with gold coloured backs pavé set with old mine cut and rose cut diamonds, approximately 3.60 carats total, with circular cabochon ruby eyes

Size/dimensions: 2.7cm long

Gross weight: 11.4 grams

£2,500-3,500

94

**A DIAMOND DOUBLE CLUSTER JABOT PIN**

The circular and marquise shaped old European cut diamond cluster terminals connected by a polished bar, approximately 3.14 carats total, the fastening behind the marquise cluster, unmarked

Size/dimensions: circular cluster 1.7cm diameter, marquise cluster 2.3cm long

Gross weight: 6.8 grams

£800-1,200





95

**AN EARLY 20TH CENTURY FRENCH GOLD, DIAMOND AND PEARL RING**  
CIRCA 1900

The lobed panel set with old mine cut and rose cut diamonds, old mine cuts approximately 0.50 carats total, with a central champagne coloured pearl detail with two further pearl accents, the shank stamped with French eagle's head poinçon  
Size/dimensions: finger size approximately P  
Gross weight: 6.4 grams

Please note the pearls are untested and unwarranted as natural pearl.

£700-1,000

96

**A DIAMOND AND PEARL CROSSOVER RING**  
FIRST HALF OF THE 20TH CENTURY

The principal old European cut diamond weighing 2.24 carats, in an eight claw setting, flanked by a pearl between crossover old cut diamond shoulders, to a polished gold shank, unmarked, in an associated ring box  
Size/dimensions: finger size M  
Gross weight: 5.6 grams

Please note the pearl is untested and unwarranted as natural pearl.

£4,000-6,000

97

**A THREE STRAND NATURAL PEARL NECKLACE WITH LATE 19TH CENTURY AND LATER DIAMOND CLASP**

The three rows of one hundred and forty eight slightly graduated natural pearls, measuring 5.9 to 6.7mm, to an old cut and rose cut diamond set lyre clasp, approximately 1.60 carats total, gold backed silver setting, unmarked  
Size/dimensions: 35cm long  
Gross weight: 60 grams

The property of Hannah Primrose, Countess of Rosebery (nee Rothschild) 1851-1890  
Thence By descent

Offered for sale with a Gemmological Certification Services Gemmological Report, No: 5784-0455, dated 21.11.2023, stating:  
Variety Natural Nacreous Pearl  
Environment Saltwater

£15,000-20,000

98

**A 1930S DIAMOND AND CULTURED PEARL BRACELET**

The lobed graduated bracelet with pierced millegrained settings, set with graduated old European cut diamonds, approximately 6.84 carats total, to a concealed clasp, together with a pair of matching diamond and cultured pearl cufflinks, the panels taken from the bracelet, with swivel backs, indistinct stamp, with an associated red leather bracelet box  
Size/dimensions: bracelet 17.5cm long, cufflinks 1.3cm long  
Gross weight: 38.4 grams

£3,000-5,000

99

**A 1920S SEED PEARL NECKLACE WITH DIAMOND SET TERMINALS**

The long woven seed pearl necklace to pierced triangular rose cut and eight cut diamond set terminals, with ring bolt attachments  
Size/dimensions: 81.5cm long  
Gross weight: 11.4 grams

£500-700



95



96



97



98



99

100

**A PAIR OF PERSIAN QAJAR GOLD GEM SET EAR PENDANTS**  
19TH CENTURY

The pear shaped drop panels each centrally set with a polished emerald within a radiating gold surround above a border of oval cabochon rubies, with red and blue enamelled edge and outer graduated pearl border, suspending a fringe of pearl drops with twisted gold wire detail, verso enamelled with a blue bird seated amongst green foliage and pink flower heads, with similarly gem set and enamelled shaped gold pediments, with later shepherds hook fittings

Size/dimensions: 7.1cm long

Gross weight: 28.7 grams

£1,500-2,000

101

**AN INDIAN CIRCULAR GEM, PEARL AND ENAMEL PANEL BROOCH/PENDANT**

Centred with a domed green enamelled panel with foil backed white stone and cabochon ruby flowerhead accents, within a foil backed cabochon petal like gem stone surround, with pearl border, with two looped attachments to both sides of the panel, one with a later bale, later brooch fitting verso, suspending an associated green enamel and pearl tassel drop

Size/dimensions: panel 6cm diameter

Gross weight: 75.3 grams

Please note the pearls are untested and unwarranted as natural pearl.

£1,500-2,000

102

**A PAIR OF INDIAN EMERALD, RUBY, SEED PEARL AND DIAMOND KARAN-PHUL EAR PENDANTS**

The gold coloured flower head shaped pediments set with emeralds and polki diamonds in foil backed settings, later stud fittings verso, suspending a fringe of seed pearls with gem terminals, and a ruby, emerald and red stone tassel drop with a similarly set fringe below

Size/dimensions: 5.7cm long

Gross weight: 33.4 grams

Please note the pearls are untested and unwarranted as natural pearl.

£1,000-1,500

103

**A PAIR OF 19TH CENTURY INDIAN GOLD, GEM AND JAIPUR ENAMELLED MAKARA HEAD KADA BANGLES**

The bangles with swivelling green enamelled opposing Makara head front sections, with pink cabochon stone tongues and white foil backed gem stone accents, screw in fittings, the backs green enamel and red and white foil backed gem flower heads, the inside of the bangle with red enamelled lovebirds with blue enamel accents amongst red flower heads and green foliage on a white ground

Size/dimensions: inner width 5.5cm

Gross weight: 141 grams

£4,000-6,000



100



101



102



103

104

**A PAIR OF INDIAN RED STONE, PEARL AND EMERALD KARAN-PHUL EAR PENDANTS**

The cabochon foil backed red stone set gold coloured flower head pediments suspending a foiled red stone tassel with pearl drops, and a central polished emerald drop with a further pearl tassel, later stud and clip fittings, unmarked

Size/dimensions: 6.8cm long

Gross weight: 47.4 grams

Please note the pearls are untested and unwarranted as natural pearl.

£3,000-5,000

105

**A PAIR OF INDIAN BLUE AND WHITE STONE TARGET CLUSTER EARRINGS**

The circular gold coloured panels with a central foil backed white stone within a blue and white stone surround, with seed pearl border, to later stud and clip fittings verso, unmarked

Size/dimensions: 2.6cm diameter

Gross weight: 23.1 grams

Please note the pearls are untested and unwarranted as natural pearl.

£400-600

106

**AN EARLY 20TH CENTURY INDIAN RUBY, RED STONE, EMERALD AND DIAMOND SET BROOCH/HAIR ORNAMENT**

The pierced domed panel with two birds of paradise amongst gem set scrolled foliage, verso with engraved bird and foliate detail, rectangular loop fitting to the centre with later brooch fitting insert

Size/dimensions: 6.1cm wide

Gross weight: 58 grams

£1,500-2,000

107

**A PAIR OF INDIAN WHITE STONE AND RED STONE SQUARE PANEL EARRINGS**

The earrings composed of four panels set with either white stones or pink stones, with white and red foiled backs, with green enamelled borders and red, blue, green and white floral enamelled backs, later stud and clip fittings, unmarked

Size/dimensions: 2.2cm wide

Gross weight: 30 grams

£1,000-1,500

108

**A PAIR OF 19TH CENTURY INDIAN DIAMOND, RUBY AND JAIPUR ENAMELLED ELEPHANT HEAD KADA BANGLES**

The bangles with swivelling opposing elephant head front sections, the elephants with polki diamond accents, cabochon ruby eyes and collars, screw in fittings, the backs with red, blue, white and green enamelled lovebirds and parrots within floral ground, the inside with red flower heads with leaf detail and blue and white borders

Size/dimensions: inner width 5.4cm

Gross weight: 132 grams

£4,000-6,000



104



105



106



107



108



109

**109**  
**AN AQUAMARINE AND DIAMOND DRESS RING**  
 The cushion cut aquamarine estimated to weigh 34.17 carats in claw settings to the corners, to tapered baguette cut diamond set shoulders, approximately 0.72 carats total, the shank with sizing beads, lasered 750 with partial hallmark and KPd maker's mark  
 Size/dimensions: finger size approximately K  
 Gross weight: 19.9 grams

£2,000-3,000



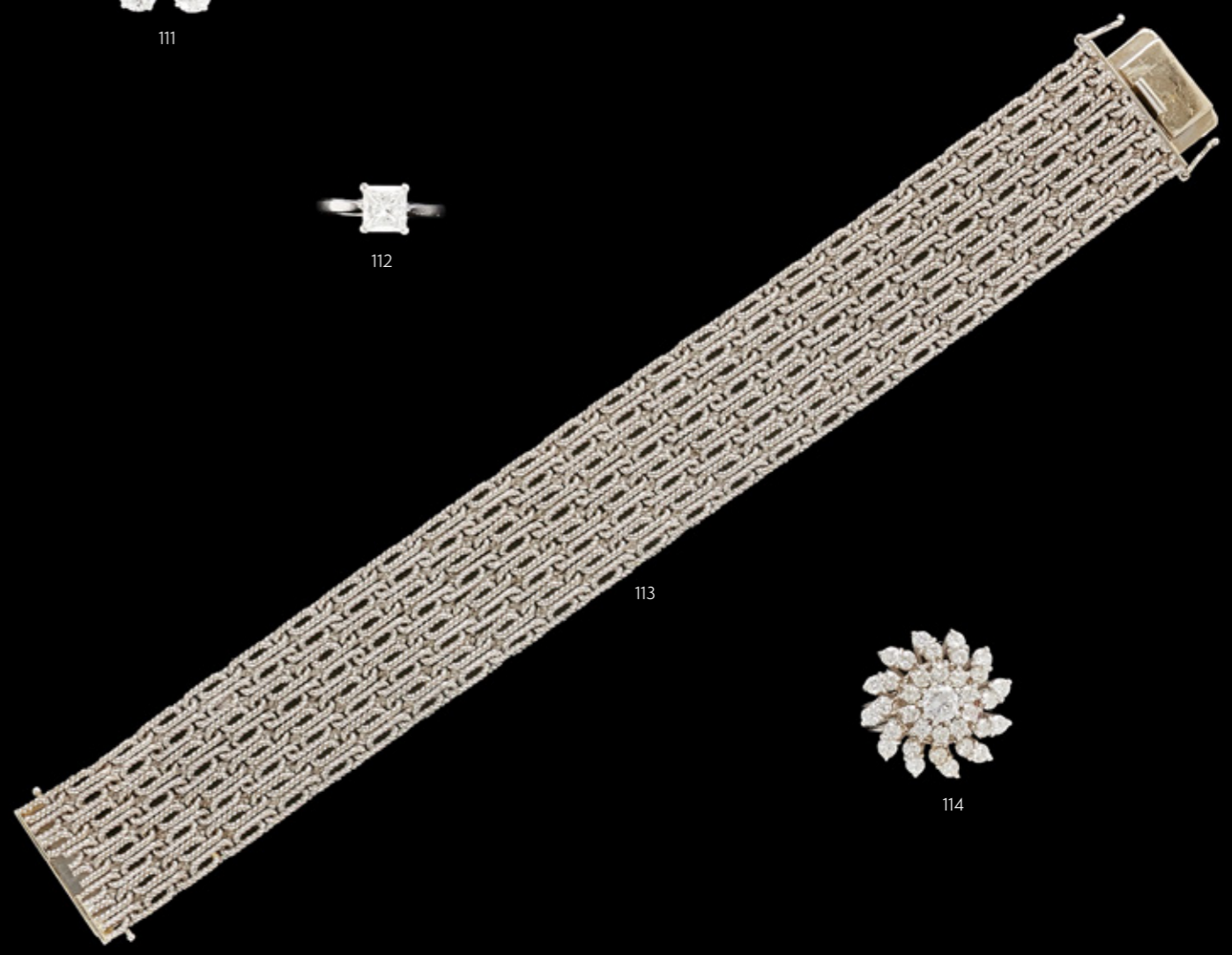
110

**110**  
**AN AQUAMARINE AND DIAMOND PENDANT ON NECKLACE**  
 The step cut aquamarine with canted corners, estimated to weigh 22.44 carats, with an eight cut diamond pediment, verso with screw in fitting, suspended from a baton and millegrain set eight cut diamond link necklace, to a box link clasp stamped 750 with an unidentified maker's mark  
 Size/dimensions: removeable aquamarine drop 2.5cm long, necklace 44cm long  
 Gross weight: 32.4 grams

£3,000-5,000



111



113

**111**  
**A PAIR OF DIAMOND EAR STUDS**  
 The brilliant cut diamonds in four claw 18 carat white gold settings, approximately 1.00 carat total, the posts with partial hallmark  
 Size/dimensions: 5.1mm diameter  
 Gross weight: 1.5 grams

£600-800



112

**112**  
**A SINGLE STONE DIAMOND RING**  
 BIRMINGHAM 2001  
 The princess cut diamond weighing 1.20 carats, within a platinum four claw setting  
 Size/dimensions: finger size K 1/2  
 Gross weight: 4.6 grams

£1,200-1,800



114

**113**  
**A FANCY LINK BROAD BRACELET**  
 The articulated interlocking white rope twist links to a concealed clasp, stamped 0.750 and signed ARON  
 Size/dimensions: 2.3cm wide, 18.7cm long  
 Gross weight: 70 grams

£1,400-1,800

**114**  
**A DIAMOND RADIATING CLUSTER RING**  
 The central brilliant cut diamond cluster within a swirling surround of brilliant cut diamonds, approximately 1.91 carats total, to a wire gallery and shank, unmarked  
 Size/dimensions: finger size M 1/2  
 Gross weight: 7.8 grams

£800-1,200

115

**MOUNTED BY CASSANDRA GOAD, SERPENTINE, A DIAMOND RING  
LONDON 2014**

The cushion shaped brilliant cut diamond stated to weigh 3.18 carats, in a four claw 18 carat gold setting, with pierced crossover brilliant cut diamond set shoulders, the maker's mark partially visible under a sizing bead, with Cassandra Goad pouch  
Size/dimensions: finger size approximately K 1/2  
Gross weight: 5.9 grams

Offered for sale with a HRD Antwerp Institute of Gemmology Diamond Certificate, Certificate No 12001453001, January 19, 2012, stating:  
Colour Grade rare white (G)  
Clarity Grade VS2

With Cassandra Goad Valuation for Replacement Purposes, dated 10th April 2018

£12,000-18,000

116

**A MID 20TH CENTURY DIAMOND BRACELET**

The articulated geometric panels set with baguette, old European, brilliant cut, and eight cut diamonds, approximately 10.40 carats total, to a concealed clasp, unmarked, in an associated Wartski bracelet box  
Size/dimensions: 17.9cm long  
Gross weight: 52.4 grams

£8,000-12,000

117

**A 1950S DIAMOND SPRAY BROOCH**

The bow shaped spray set with brilliant, pear, marquise and baguette cut diamonds, approximately 7.87 carats total, with pin clasp, unmarked, in an associated green Wartski box  
Size/dimensions: 6cm long  
Gross weight: 33.3 grams

£6,000-8,000





118



118

118

**A CONVERTIBLE DIAMOND TIARA/NECKLACE/BROOCH  
FIRST HALF OF THE 20TH CENTURY AND LATER**

Composed of tapering scrolled articulated links set throughout with old European cut and rose cut diamonds, old cuts approximately 8.17 carats total, with screw and hook fittings verso, to a later brilliant cut and rose cut diamond back chain, with diamond cluster clasp, unmarked, with tiara frame and brooch fitting, in a fitted Garrard & Co. leather case

Size/dimensions: 40cm long, front panel 2.7cm high  
Gross weight: 48.8 grams

**Provenance:**  
Purchased Garrard & Co. February 1968

Offered for sale with a copy of Garrard & Co. correspondence, outlining alterations and additions to the tiara, dated 1st December 1967 and 20th February 1968, with a hand painted sketch.

£15,000-20,000



**119 Y**  
TWO CORAL BEAD NECKLACES

The first with alternating polished and faceted coral beads, the largest beads approximately 8.5-9mm diameter, on a knotted strand, to a polished gold coloured barrel clasp, unmarked; together with a polished coral necklace, largest beads approximately 11mm diameter, to a barrel clasp

Size/dimensions: first 54cm long; second 47cm long  
Gross weight: 84.6 grams

£600-800

**120 Y**  
A NATURAL CORAL BEAD NECKLACE

The graduated polished coral beads measuring from 7.3 to 11.4mm on a knotted strand, to a coral accented gilt metal barrel clasp

Size/dimensions: 56cm long  
Gross weight: 66.1 grams

Offered for sale with a Gemmological Certification Services Gemmological Report, No: 5784-0457, dated 21.11.2023, stating: Species Natural precious coral  
Variety Corallium Rubrum  
Comment No indications of treatment

£600-800



**121 Y**  
CHOPARD, HAPPY HEART, AN 18 CARAT GOLD, DIAMOND AND MOTHER OF PEARL BANGLE

The polished gold coloured bangle with a glazed compartment signed Chopard containing a brilliant cut diamond, approximately 0.05 carats, the other terminal with a red stained heart shaped mother of pearl panel, signed Chopard and numbered 857482 6721528, stamped 750Au MADE IN GERMANY with Swiss and common control marks, in original Chopard box with sales tag  
Size/dimensions: inner width 5.9cm  
Gross weight: 11.3 grams

£600-800

**122 Y**  
A CORAL MULTI STRAND NECKLACE

The multiple strands of graduated polished coral beads, approximately 3.3 to 4.5mm diameter, to a reeded polished two colour clasp, stamped 750 R with Italian control marks  
Size/dimensions: 45.5cm long  
Gross weight: 134.5 grams

£400-600

**123 Y**  
A PAIR OF CORAL AND DIAMOND EARRINGS

The six petalled polished coral flower heads each centred with a brilliant cut diamond cluster, approximately 0.84 carats total, within radiating wire surrounds, with swivel stud and clip fittings, stamped 750  
Size/dimensions: 3.4cm long  
Gross weight: 40.7 grams

£1,500-2,000

124

**CARTIER, D'AMOUR, A DIAMOND PENDANT NECKLACE**

The brilliant cut diamond in a stepped 18 carat white gold collet setting, the diamond estimated to weigh 0.04 carats, suspended from a belcher link chain, to a lobster claw clasp, signed Cartier, Au750, numbered WEN828, stamped with common control mark, suspending a pierced double C panel, with Cartier certificate, in Cartier box with outer card case, and a Cartier card bag  
Size/dimensions: panel 4mm diameter, chain lengths 38 and 41cm long  
Gross weight: 2.3 grams

£300-500

125

**TIFFANY & CO., A DIAMOND AND PLATINUM HEART PENDANT ON DIAMOND CHAIN**

LONDON 2004  
The pavé set brilliant cut diamond heart, on a diamond set bale, the bale with full hallmark and T&Co maker's mark, suspended from a fancy rope twist baton and spectacle set brilliant cut diamond necklace, approximately 1.62 carats total, to a lobster claw clasp, with a panel stamped TIFFANY & CO. with full hallmark  
Size/dimensions: heart pendant 2.1cm long, chain 42cm long  
Gross weight: 15.5 grams

£1,200-1,800

126

**A DIAMOND NECKLACE**

The front section set with brilliant cut diamonds, approximately 4.20 carats total, to polished bar and circular link back chain, with curb link chain connector and lobster claw clasp, with a heart shaped panel lasered with 18 carat gold common control mark and partial hallmark  
Size/dimensions: 44-46cm long  
Gross weight: 23 grams

£1,500-2,000

127

**A SINGLE STONE DIAMOND HEART PENDANT**

The heart shaped modified brilliant cut diamond in a three claw setting, approximately 1.20 carats, to a polished bale, suspended from a platinum curb link chain, partial Birmingham hallmark, lobster claw clasp  
Size/dimensions: pendant 1.2cm long, chain 40cm long  
Gross weight: 4.7 grams

£800-1,200

128

**A DIAMOND LINE BRACELET**

The articulated bracelet with brilliant cut diamonds in four claw settings, approximately 8 carats total, the concealed box clasp stamped AU750, with indistinct maker's mark, with additional safety clasps  
Size/dimensions: 18.5cm long  
Gross weight: 20.1 grams

£2,500-3,500

129

**A MID 20TH CENTURY DIAMOND ETERNITY RING**

The band set with step cut diamonds, approximately 3.78 carats total, unmarked  
Size/dimensions: finger size P  
Gross weight: 4.9 grams

£1,200-1,800

130

**TIFFANY & CO., CIRCLETS, A DIAMOND RING**

LONDON 2007  
The triple diamond clusters, approximately 0.78 carats total, to a polished tapered shank, with full platinum hallmark and T & Co maker's mark  
Size/dimensions: finger size M  
Gross weight: 6.7 grams

£600-800

131

**A PAIR OF DIAMOND STUD EARRINGS**

The old European cut diamonds in eight claw settings, approximately 1.70 carats total, stud backs, unmarked  
Size/dimensions: approximately 5.75mm diameter  
Gross weight: 1.4 grams

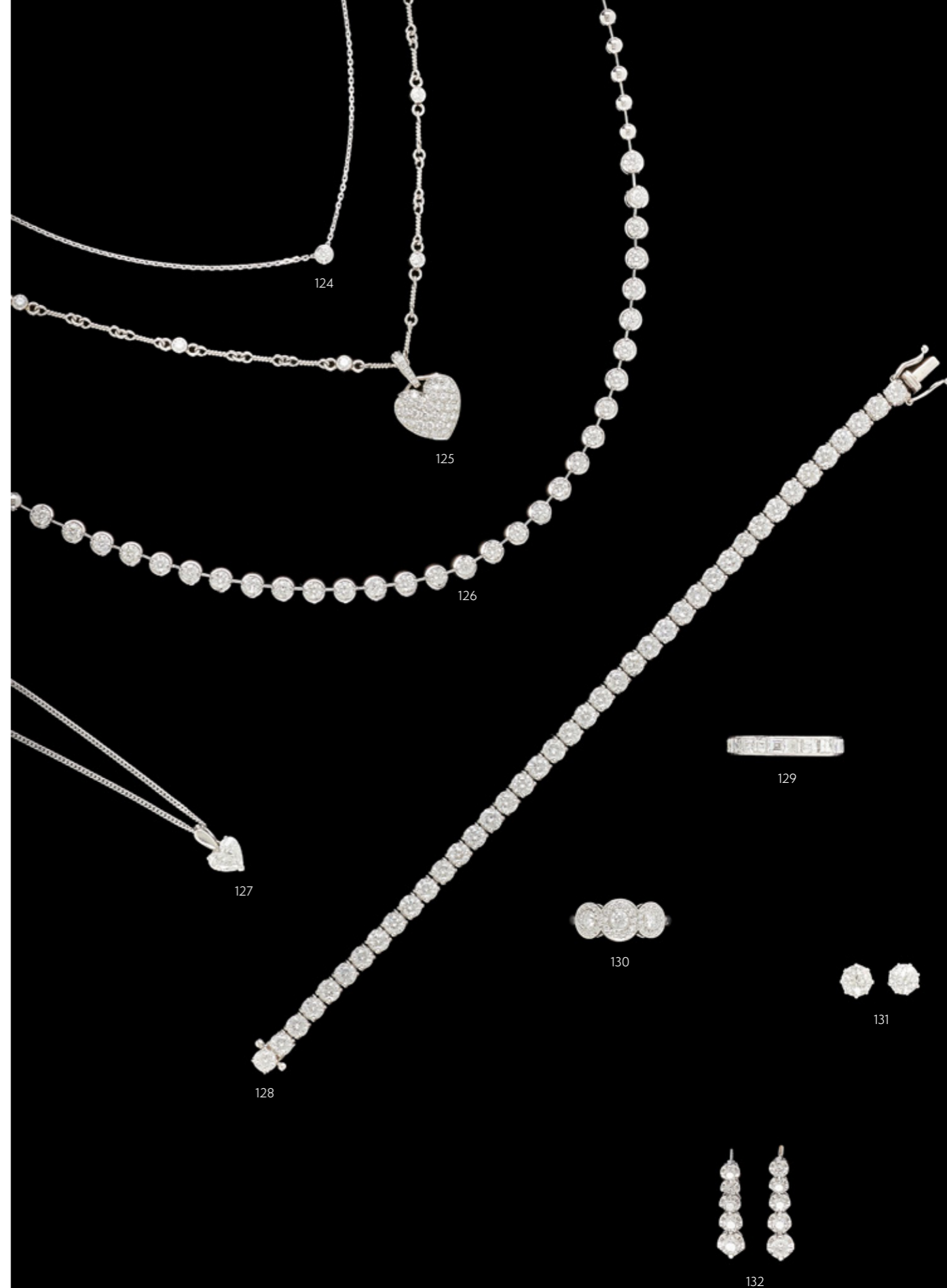
£1,500-2,500

132

**A PAIR OF DIAMOND EAR PENDANTS**

Each earring with five graduated brilliant cut diamonds in articulated four claw settings, approximately 1.10 carats total, with post fittings, stamped with DOM maker's mark, common control mark and partial 18 carat gold hallmark  
Size/dimensions: 2.3cm long  
Gross weight: 3.6 grams

£300-500





133

**A DIAMOND AND PERIDOT CLUSTER DRESS RING**

The ring centred with an oval cut peridot, stated to weigh 4.67 carats, within a double surround of brilliant cut diamonds, approximately 0.75 carats total, stamped 18K

Size/dimensions: finger size approximately L 1/2

Gross weight: 16.9 grams

£800-1,200

134

**CHIMENTO, A TWO COLOUR NECKLACE AND BRACELET**

The broad two colour fancy chevron link necklace and matching bracelet both with concealed clasps, signed Chimento and stamped 750 with Italian control marks 408 VI

Size/dimensions: 1.4cm wide, necklace 46cm long, bracelet 20cm long

Gross weight: 131.9 grams

£2,500-3,500

135

**AN ITALIAN FANCY LINK NECKLACE**

The necklace with three rows of fancy flattened links to reeded barrel spacers, stamped 750 with Italian control marks 89 VR

Size/dimensions: 90cm long

Gross weight: 34.2 grams

£700-1,000

136

**A 1970S ITALIAN 18 CARAT GOLD CURB LINK BRACELET**

The two colour flattened curb link bracelet, to a concealed box clasp, stamped 750 with Italian control mark 166 VI

Size/dimensions: 19.5cm long

Gross weight: 40.3 grams

£800-1,200

137

**AN ITALIAN GOLD COLOURED FANCY LINK BRACELET**

The fancy curb and polished horse shoe like links to a concealed clasp, stamped Italy 750 with Italian control marks

Size/dimensions: 18.2cm long

Gross weight: 26.7 grams

£500-700

138

**CHIAMPESAN, AN ITALIAN TWO COLOURED BRACELET**

The two gold coloured fancy curb links, to a concealed box clasp signed Chiampesan and stamped 750 with Italian control mark 294 VI

Size/dimensions: 18.5cm long

Gross weight: 25.3 grams

£500-700

139

**A PAIR OF PERIDOT EARRINGS**

The curved two colour panel with coral branch style decoration, centred with oval cut peridots in gold coloured collet settings, with stud and clip fittings, stamped 18k 750

Size/dimensions: 2.2cm long

Gross weight: 17.4 grams

£500-800



140

**A DIAMOND SINGLE STONE DROP RING**

The polished band suspending a pear cut diamond weighing 0.51 carats in collet setting  
Size/dimensions: finger size K 1/2  
Gross weight: 3 grams

Offered for sale with a GIA Diamond Dossier, 52831 68267, dated February 19 2018, stating: Colour Grade H  
Clarity Grade SI1

£500-700

141

**A PAIR OF MULTI GEM SET BUTTERFLY EARRINGS**

The butterflies with polished and etched wings, the antennae set with brilliant cut diamonds and garnet tips, sapphire and citrine set abdomen, gold coloured settings, unmarked, stud fittings  
Size/dimensions: 3.3cm long  
Gross weight: 10 grams

£600-800

142

**LEO PIZZO, AMORE, A PAIR OF DIAMOND SET HEART EAR STUDS**

The heart shaped domed panels pavé set with brilliant cut diamonds, approximately 0.92 carats total, the studs stamped 750, the backs stamped Leo Pizzo with Italian control marks  
Size/dimensions: 9mm wide  
Gross weight: 3.5 grams

£700-1,000

143

**A SINGLE STONE DIAMOND RING**

The old European cut diamond weighing 1.50 carats in an eight claw setting, the gold coloured shank stamped 18ct  
Size/dimensions: finger size I  
Gross weight: 2.9 grams

£2,500-3,500

144

**A THREE STONE DIAMOND RING**

The graduated brilliant cut diamonds in six claw settings, approximately 1.23 carats total, the 18 carat gold setting with London hallmark, MJ maker's mark  
Size/dimensions: finger size O  
Gross weight: 4.1 grams

£800-1,200

145

**A DIAMOND DRESS RING LONDON 1989 IMPORT MARK**

The nine slightly graduated rows of brilliant cut and princess cut diamonds in channel settings, approximately 2.52 carats total, to a polished 18 carat gold tapered shank  
Size/dimensions: finger size K 1/2  
Gross weight: 6.9 grams

£800-1,200

146

**A DIAMOND BROAD BRACELET**

The articulated polished and rope twist gold coloured wire lattice links with collet set brilliant cut diamond accents, approximately 4.14 carats total, to a sliding baton clasp, unmarked  
Size/dimensions: 2.2cm wide, 18.2cm long  
Gross weight: 52.4 grams

£2,000-3,000

147

**A FRENCH THREE STRAND CULTURED PEARL BRACELET WITH A DIAMOND CLASP**

The uniform cultured pearls measuring 6.5mm diameter, with gold coloured baton spacers, to a three stone brilliant cut diamond accented box clasp, approximately 0.24 carats total, stamped with French eagle's head poinçon, and SB maker's mark  
Size/dimensions: 2cm wide, 20cm long  
Gross weight: 39 grams

£500-800

148

**A DIAMOND DRESS RING**

The two graduated sprung panels connected with a diagonal row of brilliant cut diamonds, approximately 0.28 carats total, unmarked  
Size/dimensions: 1.8cm wide, finger size R  
Gross weight: 13.2 grams

£700-1,000

149

**TEMPLE ST CLAIR, BUBBLE, A MOONSTONE DRESS RING**

The broad front section set with oval and circular cabochon moonstones within collect settings, with gold coloured beaded accents, to a polished tapered shank, rubbed 750 mark and temple maker's mark  
Size/dimensions: finger size L  
Gross weight: 13.4 grams

£300-500

150

**A SINGLE STONE DIAMOND RING**

The brilliant cut diamond estimated to weigh 2.34 carats, within a collet setting to stepped shoulders and reeded shank, unmarked  
Size/dimensions: finger size J 1/2  
Gross weight: 11.8 grams

£4,000-6,000

151

**CASSANDRA GOAD, HARLEQUIN, A DIAMOND DRESS RING LONDON 1993**

The tapering 18 carat gold panel set with graduated brilliant cut diamonds within a rope twist wire lattice, approximately 0.22 carats total, the shank with rubbed maker's mark, with Cassandra Goad pouch  
Size/dimensions: finger size I  
Gross weight: 7.8 grams

Offered for sale with a Cassandra Goad insurance valuation dated 22nd February 2005

£250-350

152

**A DIAMOND SET SPRUNG BANGLE**

The central scrolled panel pavé set with brilliant cut diamonds, approximately 1.12 carats total, to polished shaped sprung bracelet, unmarked  
Size/dimensions: inner width 5.5cm  
Gross weight: 55.2 grams

£1,000-1,500



153 Y

**VAN CLEEF & ARPELS, MAGIC ALHAMBRA, A MOTHER OF PEARL AND CHALCEDONY NECKLACE**

The graduating quatrefoil panels set with polished chalcedony and white and grey mother of pearl, with beaded borders, linked by faceted belcher link chains, to a concealed clasp, stamped VCA 750 and numbered BL280242, the tongue stamped with French poinçons, in a Van Cleef & Arpels green suede box  
Size/dimensions: quatrefoils approximately 1cm to 2.6cm wide, 123.5cm long  
Gross weight: 66 grams

£8,000-12,000

154

**VICTOR MAYER FOR FABERGÉ, A MODERN BLUE ENAMEL EGG PENDANT ON CHAIN**

The gold coloured blue enamelled egg with gilt scroll and star detail, with a red enamelled heart shaped drop, signed FABERGÉ and numbered 363/500, stamped 750 with VM mark, with polished bale, suspended from a Fabergé belcher link chain, with a blue enamelled double eagle panel, signed FABERGÉ, numbered 39, stamped 750 with VM mark, with lobster claw fitting, the loop with partial 18 carat gold London hallmark and FAB maker's mark, with Fabergé box and certificates of authenticity  
Size/dimensions: egg pendant 2.8cm long, chain 46cm long  
Gross weight: 19.3 grams

£1,200-1,800

155

**A PAIR OF GEM SET KOI CARP BROOCHES**

The fish with pavé set brilliant cut diamond bodies and articulated fins, approximately 1.74 carats total, with polished shaped onyx patches, one fish with French cut sapphire set head and cabochon sapphire eyes, the other with similarly set rubies, both stamped 750  
Size/dimensions: both 5cm long  
Gross weight: 25.6 grams

£1,500-2,000

156

**CHOPARD, SO HAPPY, A DIAMOND AND PINK STONE BRACELET**

The faceted pink stone heart with a signed glazed compartment holding a brilliant cut diamond, estimated to weigh 0.04 carats, suspended from a white gold belcher link bracelet, with lobster claw clasp stamped with Swiss and common control marks, and a baton shaped panel signed Chopard and numbered 6180003 856236-1005  
Size/dimensions: 19cm long, heart 1.2cm wide  
Gross weight: 15.4 grams

£600-800

157

**STEPHEN WEBSTER, A RUBELLITE AND DIAMOND DRESS RING**

The squared mixed cut dark pink tourmaline within a polished collet setting, with brilliant cut diamond borders, to diamond and black diamond shoulders, stamped with SW maker's mark and 18ct  
Size/dimensions: finger size F  
Gross weight: 28.1 grams

Please note the black diamonds are untested for natural colour.

£1,000-1,500

158

**A DIAMOND AND BLACK DIAMOND HINGED BANGLE EDINBURGH 2008**

The polished 18 carat white gold bangle set to the front with triangles of circular cut black diamonds, with diagonal brilliant cut diamond set rows between, to a concealed box clasp, stamped D069 200 k18  
Size/dimensions: inner width 6cm  
Gross weight: 17 grams

Please note the black diamonds are untested for natural colour.

£400-600



**159**  
TIFFANY & CO., A DIAMOND AND SOUTH SEA CULTURED PEARL PENDANT ON CHAIN

The South Sea cultured pearl suspended from a brilliant cut diamond on a collet setting, estimated to weigh 0.08 carats, to an 18 carat gold belcher link chain, with ring bolt fitting and a panel stamped TIFFANY & CO. with London hallmark

Size/dimensions: pearl 1.4cm long, chain 40cm long  
Gross weight: 4.7 grams

£400-600

**160**  
A 14 CARAT GOLD CHAIN NECKLACE LONDON 1979

Of rope twist linking, with maker's mark CJL, with ring bolt clasp

Size/dimensions: 88cm long  
Gross weight: 56 grams

£700-1,000

**161**  
A GOLD COLOURED NECKLACE

The flattened fancy link chain to a concealed clasp, stamped 750 with Italian control mark

Size/dimensions: 41cm long  
Gross weight: 73.6 grams

£1,500-2,000

**162**  
A GOLD COLOURED COLLAR NECKLACE

The graduated panelled fringe with textured and polished decoration, to a concealed clasp, stamped 750

Size/dimensions: 36cm long  
Gross weight: 60 grams

£1,500-2,000

**163**  
OGDEN, A DIAMOND AND CULTURED PEARL DRESS RING SHEFFIELD 2013

The cluster centred with a half cultured pearl within channel set bombé graduated baguette cut diamond surround, to bifurcated baguette cut diamond set shoulders, approximately 2.32 carats total, the 18 carat gold setting with maker's mark OoH, sizing beads, in Ogden Harrogate ring box

Size/dimensions: finger size approximately L  
Gross weight: 11.5 grams

£500-700

**164**  
AN EMERALD AND DIAMOND PENDANT

The step cut emerald with canted corners, estimated to weigh 3.32 carats total, within a surround of brilliant cut diamonds, approximately 0.64 carats total, with a later diamond accented bale, unmarked, suspended from a simulated pearl necklace

Size/dimensions: pendant 2.8cm long  
Gross weight: pendant 5.1 grams

£1,000-1,500

**165**  
A PAIR OF DIAMOND AND GREEN ENAMEL EARRINGS

The gold hooped panels with pear shaped green plique-à-jour enamel detail, with brilliant cut diamond in triangular settings between, approximately 0.34 carats total, with stud fittings and hinged backs, stamped 750 with common control marks and Swiss mark

Size/dimensions: 1.9cm long, 1cm wide  
Gross weight: 16.5 grams

£400-600

**166**  
A DIAMOND AND EMERALD CLUSTER RING

The oval cut emerald estimated to weigh 4.20 carats, claw set within a surround of brilliant cut diamonds, approximately 0.60 carats total, the shank with partial Birmingham 18 carat gold hallmark and BMR maker's mark

Size/dimensions: finger size P  
Gross weight: 5.4 grams

£700-1,000

**167**  
AN EMERALD AND DIAMOND CLUSTER DRESS RING

The step cut emerald with canted corners estimated to weigh 7.15 carats, with tapered baguette cut diamonds in fan shaped channel settings, with graduated brilliant cut diamond borders, approximately 2.42 carats total, the shank stamped CASCIALU 750 with Italian control mark 312ROMA, to a tapered reeded shank

Size/dimensions: finger size M 1/2  
Gross weight: 16.2 grams

£3,000-5,000

**168**  
A MID 20TH CENTURY EMERALD ETERNITY RING AND A SAPPHIRE ETERNITY RING

The first ring channel set with step cut emeralds, unmarked; together with a similar step cut sapphire eternity ring, unmarked

Size/dimensions: first finger size O 1/2; second finger size O  
Gross weight: 11.5 grams

£800-1,200





169

170

171

172

173

175

174

**169**  
**AN 18 CARAT GOLD FLOWER BROOCH**  
 LONDON 1971  
 The four polished and rope twist 18 carat gold wire petals, to a central domed centre, the polished stalk with hallmark  
 Size/dimensions: 4.4cm long  
 Gross weight: 25.5 grams

£500-700

**170**  
**FRED, PARIS, A NOVELTY DOG BROOCH**  
 The gold coloured dog with polished long coat and textured muzzle, black enamelled nose and feet, red enamelled tongue, signed Fred Paris, 18k France, with French poinçons, in original Fred box  
 Size/dimensions: 4.4cm long  
 Gross weight: 25.3 grams

£1,000-1,500

**171**  
**KUTCHINSKY, AN 18 CARAT GOLD AND TIGER'S EYE PENDANT ON CHAIN**  
 LONDON 1972  
 The circular polished tiger's eye panel with applied polished twisted bar sections, the bale signed Kutchinsky, on a beaded fancy link 18 carat gold chain, stamped with partial Kutchinsky mark, with London 1972 import mark, ring bolt clasp, with original Kutchinsky box  
 Size/dimensions: panel 5.3cm diameter, necklace 81cm long  
 Gross weight: 102 grams

£1,000-1,500

**172**  
**A LATE VICTORIAN DOUBLE SNAKE RING**  
 With old cut diamond set heads, approximately 0.40 carats total, to polished coiled shank  
 Size/dimensions: finger size S  
 Gross weight: 8.1 grams

£400-600

**173**  
**A MULTI GEM SET BRACELET**  
 The bracelet set with rows of coloured stones including tourmaline, garnet, citrine, amethyst and aquamarine, in four claw gold coloured settings, reeded links between rows, to a concealed clasp, stamped 750 with maker's mark JPB  
 Size/dimensions: 18.5cm long  
 Gross weight: 48.5 grams

£1,000-1,500

**174**  
**A YELLOW SAPPHIRE DRESS RING**  
 The oval cut yellow sapphire estimated to weigh 16.24 carats, claw set within a gold coloured setting, to a polished shank  
 Size/dimensions: finger size P 1/2  
 Gross weight: 8 grams

The sapphire has a verbal from Gemmological Certification Services, number 5784-1257, stating: Ring - Corundum - Cushion Cut - Yellow sapphire - Sri Lanka - No indications of heating

£1,000-1,500

**175**  
**A TOPAZ AND DIAMOND CLUSTER RING**  
 LONDON 1992  
 The mixed cut topaz estimated to weigh 3.26 carats claw set within a surround of brilliant cut diamonds, approximately 0.48 carats total, within a two colour 18 carat gold setting  
 Size/dimensions: finger size J  
 Gross weight: 5.9 grams

£500-700



176



178

**A PAIR OF DIAMOND AND CULTURED PEARL EAR CLIPS**

The scrolled panels pavé set with brilliant cut diamonds, approximately 1.50 carats total, each with a cultured pearl accent, the reverse stamped 750 with HS maker's mark

Size/dimensions: 2cm long  
Gross weight: 8.3 grams

£700-1,000

179

**A MID 20TH CENTURY DIAMOND AND CULTURED PEARL CLUSTER RING**

The silver tone cultured pearl within an old cut diamond surround, approximately 0.54 carats total, with a pierced gallery, unmarked  
Size/dimensions: finger size L  
Gross weight: 6.2 grams

£400-600

180

**A DIAMOND AND CULTURED PEARL CLUSTER RING**

The bouton cultured pearl within a surround of old mine cut diamonds, approximately 1.20 carats total, the shank with a platinum 1989 hallmark  
Size/dimensions: finger size I  
Gross weight: 6.1 grams

£500-700



177

181

**A FOUR ROW CULTURED PEARL NECKLACE WITH DIAMOND AND CULTURED PEARL BOW CLASP**

The four rows of uniform cultured pearls on knotted strands, approximately 6mm diameter, to an eight cut diamond set bow shaped clasp, approximately 0.80 carats total, the clasp stamped 14k  
Size/dimensions: 40.5cm long  
Gross weight: 90.4 grams

£700-1,000

182

**A SINGLE STRAND OF CULTURED PEARLS WITH A DIAMOND CLASP**

The necklace of uniform cultured pearls measuring approximately 10mm diameter on a knotted strand, to a brilliant cut diamond pavé set barrel shaped clasp, approximately 1.94 carats total, stamped 750  
Size/dimensions: 44.2cm long  
Gross weight: 66.2 grams

£700-1,000

183

**A SOUTH SEA CULTURED PEARL AND DIAMOND RING**

The South Sea cultured pearl between pavé set diamond shoulders, approximately 1.00 carat total, the shank stamped 750 and ORS, to a polished reeded shank  
Size/dimensions: finger size P  
Gross weight: 9.5 grams

£700-1,000



178



180



179



181

182

183

176

**A SOUTH SEA CULTURED PEARL, TAHITIAN CULTURED PEARL AND DIAMOND CROSSOVER RING AND A PAIR OF SIMILAR EAR CLIPS**

The South Sea cultured pearl and Tahitian cultured pearl between pavé set eight cut and brilliant cut diamond stars, to step cut diamond and brilliant cut diamond crossover shoulders, with star detail, approximately 1.54 carats total, to a polished shank, unmarked; together with a pair of South Sea and Tahitian cultured pearl ear clips, unmarked  
Size/dimensions: finger size M 1/2, earrings 2.2cm long  
Gross weight: 40.3 grams

£1,500-2,000

177

**A DIAMOND, BLACK DIAMOND AND CULTURED PEARL DRESS RING LONDON 2012**

The cultured pearl within a pierced trumpet like 18 carat gold setting above an open scrolled panel, set throughout with brilliant cut diamonds and black diamond borders, approximately 1.50 carats total, stamped with DB maker's mark  
Size/dimensions: panel 4.6cm long, finger size P 1/2  
Gross weight: 28.9 grams

£800-1,200

184

**A PAIR OF TWO COLOUR KNOTTED EAR CLIPS**

The intercepting polished and reeded knotted ear clips, stamped 750 with Italian control marks

Size/dimensions: 2.4cm long

Gross weight: 19.2 grams

£400-600

185

**AN 18 CARAT GOLD FANCY LINK NECKLACE**

BIRMINGHAM 1989 IMPORT MARK

The necklace composed of decorative articulated polished links, to a concealed box clasp, stamped with import mark and 18k Italy

Size/dimensions: 42cm long

Gross weight: 33.4 grams

£700-1,000

186

**A GOLD COLOURED COLLAR NECKLACE**

The graduated fancy double curb link necklace with polished central sections and textured borders, to a concealed box clasp, the tongue with an unidentified stamp including a stamp of AG over 18K

Size/dimensions: 44cm long

Gross weight: 51 grams

£1,000-1,500

187

**TIFFANY & CO., A PAIR OF GOLD COLOURED BUTTON CUFFLINKS**

The graduated polished circular button panels with cross stitch detail, verso stamped TIFFANY & CO. 14K, with belcher link connectors; together with a single 18 carat gold button dress stud by Deakin and Francis, London 1995

Size/dimensions: cufflink panels 1.9cm and 1.4cm diameter

Gross weight: 23.5 grams

**Provenance:**

From the Estate of the late Robert Kime

£300-500

188

**A THREE COLOUR FANCY LINK BRACELET**

The hooped links joined by trios of various coloured bars, to a lobster claw clasp, signed Biffi 750 and stamped with Italian control mark

Size/dimensions: 20.3cm long

Gross weight: 22.9 grams

£400-600

189

**POMELLATO, A TWO COLOUR CURB LINK BRACELET**

The alternating polished white and gold coloured links to a discreet clasp, signed Pomellato stamped 750 with Italian control mark

Size/dimensions: 2.1cm wide, 20.7cm long

Gross weight: 89.9 grams

£2,500-3,500

190

**AN ITALIAN THREE COLOUR FANCY LINK CHAIN NECKLACE**

The hooped links to a pair of polished shaped three colour bars, the clasp signed Biffi and stamped 750 with Italian control mark 433 VI, to lobster claw clasp

Size/dimensions: 91.5cm long

Gross weight: 78.1 grams

£1,600-1,800

191

**CHIMENTO, AN ITALIAN GOLD COLOURED BANGLE**

The sprung bangle covered by polished two colour woven style panels, to reeded polished terminals, signed Chimento, 750 with Italian control mark

Size/dimensions: inner width 6cm

Gross weight: 52.2 grams

£1,000-1,500





192

**192**  
**A DIAMOND SINGLE STONE RING**  
The brilliant cut diamond stated to weigh 1.09 carats in a four claw setting, to a polished platinum shank, partial Birmingham hallmark  
Size/dimensions: finger size approximately L  
Gross weight: 4.7 grams

Offered for sale with a European Gemmological Laboratory (E.G.L.) Diamond Certificate, Certificate No AC 1000059, date October 20, 2011, stating: Purity (Clarity grade): VS2  
Colour grade: F

£1,000-1,500

**193**  
**A PAIR OF MID 20TH CENTURY RUBY AND DIAMOND CLUSTER EAR PENDANTS**

The pear cut rubies estimated to weigh 1.02 carats and 1.17 carats, within a graduated surround of old European cut diamonds, suspended from a diamond stud, approximately 1 carat total, in an associated Collingwood of Conduit Street case  
Size/dimensions: 1.7cm long  
Gross weight: 6.8 grams

£1,000-1,500

**194**  
**A PAIR OF DIAMOND STUD EARRINGS**

The brilliant cut diamonds in four claw white settings, approximately 1.10 carats total, unmarked  
Size/dimensions: 5.2mm diameter  
Gross weight: 1.6 grams

£700-1,000



193

**195**  
**A SINGLE STONE DIAMOND PENDANT**

The brilliant cut diamond in a four claw setting, estimated to weigh 0.70 carats, in a four claw white gold coloured setting with polished bale, unmarked; on an associated platinum belcher link chain, Sheffield 2003; and an 18 carat white gold serpent link necklace, partial hallmark  
Size/dimensions: pendant 1.1cm long; belcher link chain 44cm long; serpent link necklace 41cm long  
Gross weight: 6.9 grams

£600-800

**196**  
**A THREE ROW CULTURED PEARL NECKLACE WITH DIAMOND AND CULTURED PEARL CLUSTER CLASP**

The uniform cultured pearls on knotted strands, approximately 6.8mm diameter, to a cultured pearl and diamond cluster clasp, the principal diamonds approximately 1.20 carats total, unmarked  
Size/dimensions: clasp 2.1cm long, 41cm long  
Gross weight: 81.6 grams

£1,500-2,000

**197**  
**A SINGLE STONE DIAMOND RING LONDON 2006**

The old European cut diamond within a six claw setting, weigh 3.33 carats, to tapered baguette cut diamond set shoulders, Platinum hallmark  
Size/dimensions: finger size L  
Gross weight: 4.6 grams

Offered for sale with a European Gemmological Laboratory (E.G.L.) Diamond Certificate, No. 060718B/RVH, date 18 July 2006, stating: Clarity Grade SI1  
Colour Grade H

£12,000-18,000

**198**  
**A PAIR OF DIAMOND, ROSE QUARTZ AND MOONSTONE EARRINGS PURCHASED FROM CASSANDRA GOAD**

The oval cabochon moonstones within a surround of brilliant cut diamonds, approximately 1.04 carats total, in white coloured settings stamped 750, with stud fittings and screw on butterflies, suspending faceted pear shaped rose quartz drops, in Cassandra Goad pouch  
Size/dimensions: 4.2cm long  
Gross weight: 14.6 grams

£700-1,000



194



195



197



198

196



199

**A PAIR OF DIAMOND AND SAPPHIRE CLUSTER STUDS**

The central circular cut sapphires within a double surround of graduated brilliant cut diamonds, approximately 1.28 carats total, to stud fittings

Size/dimensions: 1.2cm diameter

Gross weight: 4.8 grams

£800-1,200

200

**A SAPPHIRE AND DIAMOND CLUSTER RING**

LONDON 1984

The oval cut sapphire within a surround of brilliant cut diamonds, approximately 1.04 carats total, in a two colour 18 carat gold setting, maker's mark MJ

Size/dimensions: finger size K

Gross weight: 4.3 grams

£600-800

201

**A SAPPHIRE AND DIAMOND CLUSTER RING**

BIRMINGHAM 1993

The oval cut sapphire estimated to weigh 6.70 carats within a surround of rose cut diamonds, in an 18 carat gold setting

Size/dimensions: panel 1.9cm long, finger size N

Gross weight: 7.3 grams

Offered for sale with a Gemmological Certification Services report,

No: 5784-0456, dated 21.11.2023, stating:

Origin Sri Lanka (Ceylon)

Comment No indications of heating

£2,000-3,000

202

**A FRENCH SAPPHIRE AND DIAMOND RING**

The oval cut sapphire estimated to weigh 2.36 carats, between shaped brilliant cut diamond set shoulders, approximately 0.70 carats total, the shank stamped with French platinum poinçon and maker's mark

Size/dimensions: finger size M

Gross weight: 5 grams

£1,500-2,000

203

**A SAPPHIRE AND DIAMOND CLUSTER RING**

The pear cut sapphire estimated to weigh 3.17 carats claw set within a surround of marquise cut diamonds, approximately 1.92 carats total, to trifurcated wire shoulders, the shank with sizing beads, unmarked

Size/dimensions: finger size approximately Q

Gross weight: 11 grams

£1,500-2,000

204 †

**A SAPPHIRE AND DIAMOND THREE STONE RING**

The squared cushion cut sapphire estimated to weigh 10.93 carats, flanked by two trapeze cut diamonds, the shank with sizing beads and engraved xxx Kuys x

Size/dimensions: finger size approximately M

Gross weight: 10.8 grams

£10,000-15,000

205

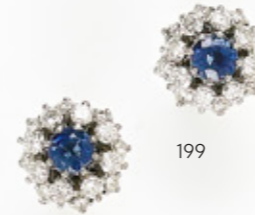
**A SAPPHIRE AND DIAMOND HINGED BANGLE**

The oval cut sapphires interspaced with pairs of eight cut diamonds, to a polished back, unmarked

Size/dimensions: inner width 5.6cm, gem set front section measuring 5mm to 7.5mm wide

Gross weight: 16.1 grams

£1,000-1,500



199



201



200



202



203



204



205



206

**206 Y**  
 DIOR, LADY DIOR  
 A PYTHON SKIN HANDBAG, CIRCA 2011  
 With twin loop handles, white metal hardware, the single zip opening to a grey leather interior with a single zipped pocket, with a guarantee card and shoulder strap  
 32 x 12 x 26cm

£2,000-3,000

**207 Y**  
 GUCCI, BAMBOO  
 A SEA GREEN ALLIGATOR HANDBAG, CIRCA 2006  
 With curved bamboo handle and swivel clasp, with gilt hardware, opening to two leather lined main pockets and an internal zipper pocket with fabric lining, stamped GUCCI Made in Italy and numbered 137367 000926  
 32.5 x 11 x 23.5cm

£1,000-1,500



207

**208**  
 LOUIS VUITTON, MELROSE AVENUE  
 A BLEU NUIT MONOGRAM VERNIS LEATHER HANDBAG  
 With twin loop handles and gilt metal hardware, the three compartments with a fastening strap, the central zip opening to a compartment with two open pockets, with a Louis Vuitton cloth, care booklet and dust bag  
 35 x 26 x 12cm

£800-1,200



208

**209**  
 LOUIS VUITTON  
 A MONOGRAMMED COATED CANVAS HARD TRAVEL CASE, NO. 874871, CIRCA 1950  
 With leather trim and loop handle, key and flip lock clasps, opening to a cream interior with two straps  
 36 x 33 x 21cm

£500-800



209

**210**  
 LOUIS VUITTON  
 A MONOGRAMMED COATED CANVAS HARD SUITCASE, NO. 874579, CIRCA 1950  
 With leather trim and loop handle, key and flip lock clasps, opening to a cream interior with two straps  
 60 x 43 x 18cm

£1,000-1,500



210

211

UNSIGNED

A SWISS GOLD OPEN FACE QUARTER REPEATER POCKET WATCH, NO. 70410 12761, CIRCA 1850

**Movement:** Three armed compensated balance, flat balance spring, anchor lever escapement, repeater work

**Case:** Gold four piece hinged case, the back cover with engine turned decoration, engraved with scroll work and flowers, stamped with marks for Neuchatel 1820 - 1866, .750 standard

**Dial:** White enamel

**Size:** 45mm

**Signed:** Unsigned

**Accessories:** None

£1,000-1,500

212

JOHN TAYLOR, LONDON

AN 18 CARAT GOLD OPEN FACE POCKET WATCH, CIRCA 1836

**Movement:** Full plate

**Case:** 18 carat gold three piece hinged case, the back cover with engine turned decoration and a circular vacant reserve, hallmarked London 1836

**Dial:** Silvered and gilt

**Size:** 41mm

**Signed:** Movement

**Accessories:** Suspended on a gold articulated fancy link chain, winding key

£1,000-1,500

213

WALTHAM, U.S.A

AN 18 CARAT GOLD KEYLESS WIND OPEN FACE POCKET WATCH WITH UP/DOWN INDICATOR, NO. 403364, CIRCA 1927

**Movement:** Bimetallic split balance, overcoil balance spring, lever escapement, 23 jewels

**Case:** 18 carat gold four piece hinged case, hallmarked for Birmingham 1927

**Dial:** White

**Size:** 49mm

**Signed:** Dial, movement

**Accessories:** None

£1,000-1,500

214

UNSIGNED

AN 18 CARAT GOLD KEYLESS WIND MINUTE REPEATER HALF HUNTER POCKET WATCH, NO. 7592, CIRCA 1885

**Movement:** Three quarter plate, bimetallic split balance, overcoil balance spring, lever escapement, repeater work

**Case:** 18 carat gold five piece hinged case, the front cover with a blued enamel Roman numeral chapter ring, the back cover with a crest and a motto, hallmarked London 1885

**Dial:** White

**Size:** 52mm

**Signed:** Unsigned

**Accessories:** None

£2,000-3,000

215

VOLTA

A GOLD KEYLESS WIND QUARTER REPEATER FULL HUNTER POCKET WATCH WITH CALENDAR, CHRONOGRAPH AND MOONPHASE, NO. 31979, CIRCA 1930

**Movement:** Lever escapement, compensated balance, overcoil balance spring, repeater work

**Case:** Gold six piece hinged case, stamped K18

**Dial:** White enamel

**Size:** 57mm

**Signed:** Case

**Accessories:** None

£1,500-2,000



212



211



213



214



215



216

**216**  
OMEGA, CONSTELLATION, REF. 2151000  
A LADY'S BI-METAL AND DIAMOND BRACELET WATCH, CIRCA 1995  
Movement: Cal. ETA. 255461, quartz, 6 jewels  
Case: Stainless steel case, diamond set bezel, snap case back  
Dial: Champagne  
Bracelet: Omega bi-metal bracelet with fold over clasp  
Size: 33mm, bracelet 18.5cm  
Signed: Case, dial, movement, crown, clasp  
Accessories: Omega box, international warranty card, outer card packaging

£600-800



217

**217**  
CARTIER, TANK FRANCAISE, REF. 2384  
A LADY'S BI-METAL BRACELET WATCH,  
NO. CC777214, CIRCA 2005  
Movement: Cal. 057, quartz, 4 jewels  
Case: Stainless steel case, cabochon sapphire  
set crown, screwed down case back with  
four screws  
Dial: Silvered  
Bracelet: Cartier bi-metal bracelet with  
concealed clasp  
Size: 20mm, bracelet 14.5cm  
Signed: Case, dial, movement, clasp  
Accessories: None

£700-1,000



218

**218**  
CARTIER, SANTOS, REF. 2423  
A LADY'S BI-METAL BRACELET WATCH WITH DATE, NO. 767667CD, CIRCA 2000  
Movement: Cal. 077, automatic, 25 jewels  
Case: Stainless steel case, gold coloured bezel, screw down case back with eight screws  
Dial: Silvered  
Bracelet: Cartier bi-metal bracelet with concealed clasp  
Size: 24mm, bracelet 16cm  
Signed: Case, dial, movement, clasp  
Accessories: None

£800-1,200

**219**  
OMEGA, CONSTELLATION,  
A LADY'S 18 CARAT GOLD BRACELET WATCH, NO. 5950076, CIRCA 1990  
Movement: Cal. 1450, quartz, 10 jewels  
Case: 18 carat gold case, snap case back, stamped with 750 common control mark  
Dial: Champagne with diamond markers  
Bracelet: Omega 18 carat gold bracelet with deployant clasp  
Size: 22mm, bracelet 15cm  
Signed: Case, dial, movement, crown, clasp  
Accessories: None

£1,000-1,500



219

**220 Y**  
ROLEX  
A LADY'S WHITE GOLD AND DIAMOND COCKTAIL  
WATCH, CIRCA 1960  
Movement: Cal. 180, manual wind, 17 jewels  
Case: White gold case, diamond set lugs, snap case  
back, stamped 18CT  
Dial: Silvered  
Strap: Unsigned black leather strap with pin buckle  
Size: 14mm  
Signed: Case, dial, movement, crown  
Accessories: None

£600-800



220

**221 Y**  
CARTIER, TANK  
A LADY'S 18 CARAT WHITE GOLD AND DIAMOND WRIST WATCH, NO. 780931603  
Movement: Cal. 78/1, manual wind, 17 jewels  
Case: 18 carat white gold case, diamond set bezel and lugs, screwed down case back  
with four screws, stamped with 750 common control mark  
Dial: White  
Strap: Black crocodile strap with Cartier 18 carat white gold deployant clasp  
Size: 20mm  
Signed: Case, dial, movement, crown, strap, clasp  
Accessories: None

£3,000-5,000



221



222

**222**  
**CARTIER, COUGAR**  
 A BI-METAL WRIST WATCH WITH DATE, NO. 187904 C82994, CIRCA 1995  
**Movement:** Cal. 687, quartz, 7 jewels  
**Case:** Stainless steel case, gold coloured bezel, cabochon sapphire set crown, screwed down case back with eight screws  
**Dial:** Silvered  
**Strap:** Cartier black leather strap with stainless steel deployant clasp  
**Size:** 34mm  
**Signed:** Case, dial, movement, crown, strap, clasp  
**Accessories:** Cartier pouch, international guarantee, instruction booklet

£800-1,200



223

**223**  
**CARTIER, MUST DE CARTIER, COLISEE, REF. 2410**  
 A LADY'S SILVER GILT WRIST WATCH, NO. 622480CC  
**Movement:** Cal. 157, quartz, 4 jewels  
**Case:** Silver gilt case, screwed down case back with four screws, stamped with 925 common control mark  
**Dial:** White  
**Strap:** Cartier brown leather strap with gold plated deployant clasp  
**Size:** 24mm  
**Signed:** Case, dial, movement, clasp  
**Accessories:** Must de Cartier box

£300-500



224

**224**  
**CARTIER, TANK OBUS, HARRODS 150TH ANNIVERSARY, REF. 1630**  
 A LIMITED EDITION 18 CARAT GOLD WRIST WATCH, NO. 7/10, CC118309, CIRCA 1999  
**Movement:** Cal. 157, quartz, 4 jewels  
**Case:** 18 carat gold case, cabochon sapphire set crown, screwed down case back with four screws, stamped with 750 common control mark  
**Dial:** White  
**Strap:** Cartier pink leather strap with 18 carat gold pin buckle  
**Size:** 25mm  
**Signed:** Case, dial, movement, strap, buckle  
**Accessories:** Cartier box, guarantee, instruction book, outer card packaging

£3,000-5,000

**225**  
**CARTIER, SANTOS GALBEE**  
 A LADY'S 18 CARAT GOLD AND DIAMOND BRACELET WATCH  
**Movement:** Cal. 2671, automatic, 25 jewels  
**Case:** 18 carat gold case, diamond set bezel, cabochon sapphire set crown, screwed down case back with eight screws  
**Dial:** White  
**Bracelet:** Cartier 18 carat gold bracelet with fold over clasp  
**Size:** 24mm, bracelet 16.5cm  
**Signed:** Case, dial, movement, clasp  
**Accessories:** None

£3,000-5,000



225

**226**  
**CARTIER, PANTHERE**  
 AN 18 CARAT GOLD BRACELET WATCH, CIRCA 2000  
**Movement:** Cal. 88, quartz, 9 jewels  
**Case:** 18 carat gold case, cabochon sapphire set crown, screwed down case back with eight screws, stamped with 750 common control mark  
**Dial:** Champagne  
**Bracelet:** Cartier 18 carat gold brick link bracelet with concealed clasp  
**Size:** 29mm, bracelet 16.5cm  
**Signed:** Case, dial, movement, crown, strap, buckle  
**Accessories:** Cartier pouch, a spare link

£4,000-6,000



226

**227**  
**CARTIER, ROADSTER, REF. 2524**  
 AN 18 CARAT GOLD BRACELET WATCH WITH DATE, NO. 10100CE, CIRCA 2000  
**Movement:** Cal. 3110, automatic, 21 jewels  
**Case:** 18 carat gold case, screwed down case back with eight screws, stamped with 750 common control mark  
**Dial:** Silvered  
**Bracelet:** Cartier 18 carat gold bracelet with concealed clasp  
**Size:** 37mm, bracelet 16.5cm  
**Signed:** Case, dial, movement, clasp  
**Accessories:** Cartier pouch

£5,000-7,000



227

228

JAEGER LECOULTRE, MASTER COMPRESSOR MEMOVOX, REF. 146.3.97  
AN 18 CARAT WHITE GOLD WRIST WATCH WITH DATE AND ALARM,  
NO. 0095, CIRCA 1998

Movement: Cal. 918, automatic, 22 jewels

Case: 18 carat white gold case, compression key crowns, screwed down case  
with four screws, stamped with 750 common control mark

Dial: Grey with rotating inner bezel

Strap: Jaeger LeCoultre black leather strap with 18 carat white gold deployant clasp

Size: 42mm

Signed: Case, dial, movement, crowns, strap, clasp

Accessories: Jaeger LeCoultre box, guarantee certificate, instruction booklet,  
outer card packaging

£5,000-8,000



228



229

**229Y**  
**JAEGER LECOULTRE, REVERSO, REF. 250.1.86**  
 AN 18 CARAT GOLD REVERSIBLE WRIST WATCH, NO. 1886909, CIRCA 1990  
**Movement:** Manual wind  
**Case:** 18 carat gold reversible case, stamped with 750 common control mark  
**Dial:** Silvered  
**Strap:** Jaeger LeCoultre black crocodile strap with gold coloured pin buckle, stamped 18K  
**Size:** 23mm  
**Signed:** Case, dial, crown, strap, buckle  
**Accessories:** None

£2,000-3,000



230

**230**  
**ROGER DUBUIS, GOLDEN SQUARE**  
 A LIMITED EDITION 18 CARAT WHITE GOLD WRIST WATCH, NO. 28/28  
**Movement:** Cal. 57, automatic, 25 jewels  
**Case:** 18 carat white gold case, screwed down display case back with eight screws, stamped with 750 common control mark  
**Dial:** Silvered  
**Strap:** Roger Dubuis black pressed leather strap with 18 carat white gold pin buckle  
**Size:** 40mm  
**Signed:** Case, dial, movement, crown, strap, buckle  
**Accessories:** None

£2,500-3,500



231

**231**  
**GIRARD PERREGAUX, VINTAGE, REF. 2580**  
 AN 18 CARAT WHITE GOLD WRIST WATCH WITH DATE AND MOONPHASE, NO. 111  
**Movement:** Cal. 3306, automatic, 32 jewels  
**Case:** 18 carat white gold case, snap display case back, stamped with 0.750 common control mark  
**Dial:** Silvered  
**Strap:** Girard Perregaux black leather strap with 18 carat white gold deployant clasp  
**Size:** 32mm  
**Signed:** Case, dial, movement, strap, clasp  
**Accessories:** None

£2,000-3,000

**232**  
**OMEGA, SPEEDMASTER MK II, REF. 145.014**  
 A STAINLESS STEEL CHRONOGRAPH BRACELET WATCH, CIRCA 1969  
**Movement:** Cal. 861, manual wind chronograph, 17 jewels  
**Case:** Stainless steel case, screw down case back  
**Dial:** Black  
**Bracelet:** Omega stainless steel bracelet with fold over clasp  
**Size:** 42mm, bracelet 18.5cm  
**Signed:** Case, dial, movement, crown, clasp  
**Accessories:** None

£1,000-1,500



232

**233**  
**TAG HEUER, MONACO 40TH ANNIVERSARY STEVE MCQUEEN, REF. CAW211A**  
 A LIMITED EDITION STAINLESS STEEL CHRONOGRAPH WRIST WATCH WITH DATE, NO. 0334/1000 EEQ1644, CIRCA 2009  
**Movement:** Cal. 11, automatic chronograph, 35 jewel  
**Case:** Stainless steel case, screwed down case back with four screws  
**Dial:** Blue  
**Strap:** Tag Heuer black leather strap with stainless steel deployant clasp  
**Size:** 38mm  
**Signed:** Case, dial, movement, crown, clasp  
**Accessories:** None

£2,000-3,000



233

**234**  
**BREITLING, SUPEROCEAN, REF. A13320**  
 A STAINLESS STEEL CHRONOGRAPH BRACELET WATCH WITH DATE, NO.2388733  
**Movement:** Automatic chronograph  
**Case:** Stainless steel case, rotating bezel, screw down case back  
**Dial:** Blue  
**Bracelet:** Non-original stainless steel mesh bracelet with fold over clasp  
**Size:** 46mm, bracelet 20cm  
**Signed:** Case, dial, movement, crown  
**Accessories:** None

£1,000-1,500



234

235

ZENITH, EL PRIMERO DEFY EXTREME OPEN, REF. 96.0528.4021

A BI-METAL BRACELET WATCH WITH CHRONOGRAPH AND POWER RESERVE,  
CIRCA 2014

Movement: Automatic chronograph

Case: Titanium case, rotating bezel, screw down crown and pushers, screw down case back

Dial: Carbon fibre and skeleton

Bracelet: Zenith titanium and gold coloured bracelet with concealed clasp

Size: 46mm, bracelet 18.5cm

Signed: Case, dial, crown, clasp

Accessories: Zenith box, instruction booklet, two spare links outer card packaging

£3,000-5,000



235





236

**236**  
**BAUME & MERCIER, REF. 65425**  
 A STAINLESS STEEL AND DIAMOND CHRONOGRAPH BRACELET WATCH WITH DATE, NO. 3586630, CIRCA 2000  
**Movement:** Cal. B.M 13750, automatic chronograph, 25 jewels  
**Case:** Stainless steel case, diamond set bezel, screw down crown, screw down case back  
**Dial:** Blue  
**Bracelet:** Baume & Mercier stainless steel bracelet with concealed clasp  
**Size:** 38mm, bracelet 17.5cm  
**Signed:** Case, dial, movement, crown, clasp  
**Accessories:** Baume & Mercier box, guarantee card, instruction book, two spare links, outer card packaging

£500-700



237

**237**  
**BULGARI, BULGARI CARBON GOLD**  
 A LIMITED EDITION CARBON WRIST WATCH WITH DATE, NO. 249/300, CIRCA 1993  
**Movement:** Cal. ETA 2824-2, automatic, 25 jewels  
**Case:** Carbon case, screwed down display case back with six screws  
**Dial:** Black  
**Strap:** Bulgari brown leather strap with pin buckle  
**Size:** 34mm  
**Signed:** Case, dial, movement, strap  
**Accessories:** Bulgari box, international guarantee booklet

£400-600



238

**238**  
**CHOPARD, HAPPY SPORT, REF. 28/8347/8**  
 A STAINLESS STEEL WRIST WATCH WITH DATE AND FLOATING DIAMONDS, NO. 1215474, CIRCA 2007  
**Movement:** Cal. 955112, quartz, 7 jewels  
**Case:** Stainless steel case, rotating bezel, floating diamonds, screw down crown, screwed down case back with eight screws  
**Dial:** Black  
**Strap:** Chopard black rubber strap with stainless steel pin buckle  
**Size:** 38mm  
**Signed:** Case, dial, movement, strap, buckle  
**Accessories:** Chopard box, guarantee certificate, service receipt dated 08.07.2022, booklet, outer card packaging

£800-1,200

**239**  
**ROLEX, OYSTER PERPETUAL DATEJUST, REF. 279174**  
 A LADY'S BI-METAL BRACELET WATCH WITH DATE AND DIAMOND SET DIAL, NO. 746GF887, MODERN  
**Movement:** Cal. 2236, automatic, 31 jewels  
**Case:** Stainless steel case, white gold coloured bezel, screw down crown, screw down case back  
**Dial:** Dark grey  
**Bracelet:** Rolex Jubilee stainless steel bracelet with concealed clasp  
**Size:** 28mm, bracelet 14.5cm  
**Signed:** Case, dial, movement, crown, clasp  
**Accessories:** None

£2,000-3,000



239

**240**  
**ROLEX, OYSTER PERPETUAL DATEJUST, REF. 79173**  
 A LADY'S BI-METAL BRACELET WATCH WITH DATE, NO. Y311878, CIRCA 2002  
**Movement:** Cal. 2235, automatic, 31 jewels  
**Case:** Stainless steel case, gold coloured bezel, screw down crown, screw down case back  
**Dial:** White with diamond markers  
**Bracelet:** Rolex Jubilee bi-metal bracelet with fold over clasp  
**Size:** 25mm, bracelet 17.5cm  
**Signed:** Case, dial, movement, crown, clasp  
**Accessories:** Rolex box, guarantee certificate, information booklet, outer card package

£2,000-3,000



240

**241**  
**ROLEX, DATEJUST, REF. 16233**  
 A BI-METAL BRACELET WATCH, NO. R818483, CIRCA 1988  
**Movement:** Cal. 3135, automatic, 31 jewels  
**Case:** Stainless steel case, gold coloured bezel, screw down crown, screw down case back  
**Dial:** Silvered  
**Bracelet:** Rolex Jubilee bi-metal bracelet with fold over clasp  
**Size:** 36mm, bracelet 18cm  
**Signed:** Case, dial, movement, crown, clasp  
**Accessories:** Rolex box, guarantee certificate, booklets, swing tags, outer card packaging

£2,500-3,500



241

242 Ω

ROLEX, OYSTER PERPETUAL DATEJUST, REF. 126334

A STAINLESS STEEL BRACELET WATCH WITH DATE, NO. H57499H1, CIRCA 2022

Movement: Cal. 3235, automatic, 31 jewels

Case: Stainless steel case, white gold coloured fluted bezel, screw down crown, screw down case back

Dial: Blue

Bracelet: Rolex Jubilee stainless steel bracelet with fold over clasp

Size: 41mm, bracelet 20.5cm

Signed: Case, dial, movement, crown, clasp

Accessories: Rolex box, guarantee card, instruction booklet, swing tag, outer card packaging, small Rolex box

£6,000-8,000



242

243 Ω

ROLEX, OYSTER PERPETUAL SEA-DWELLER, REF. 126600

A STAINLESS STEEL BRACELET WATCH WITH DATE, NO. H64F9054,  
CIRCA 2021

Movement: Cal. 3235, automatic, 31 jewels

Case: Stainless steel case, rotating bezel with black ceramic insert, screw  
down crown, screw down case back

Dial: Black

Bracelet: Rolex Oyster stainless steel bracelet with Oysterlock clasp

Size: 43mm, bracelet 20cm

Signed: Case, dial, movement, crown, clasp

Accessories: Rolex box, guarantee card, instruction booklet, swing tag,  
outer card packaging

£6,000-8,000



243



244

**244**  
**A CASED SET OF FOUR 9 CARAT GOLD BRIDGE PROPELLING PENCILS**  
 S. J. ROSE & SON, BIRMINGHAM 1981  
 With engine turned decoration and each with one of the four suits to the terminals  
 9cm (3 1/2in) long  
 With an Asprey case

£300-500

**245**  
**A CASED SET OF FOUR 9 CARAT GOLD BRIDGE PROPELLING PENCILS**  
 S. J. ROSE & SON, BIRMINGHAM 1981  
 With engine turned decoration and each with one of the four suits to the terminals  
 9cm (3 1/2in) long  
 With an Asprey case

£300-500



246



245

**246**  
**CARAN D'ACHE, MATTERHORN**  
 A LIMITED EDITION FOUNTAIN PEN, NO. 0524/1291  
**Cap and Barrel:** Anthracite grey lacquered cap and barrel with silver coloured overlay, stamped 800, the cap overlaid with Matterhorn relief and cowbell clip, the barrel overlaid with chalets, pine trees, goats and Swiss flags  
**Nib and Filling System:** Medium white gold coloured nib, stamped 18C-750, cartridge filling system, uninked  
**Accessories:** Caran d'Ache box, guarantee card, information booklet, instruction booklet, cartridge convertor, two ink cartridges, outer card packaging

£800-1,200



247

**247 Y**  
**VISCONTI, SUPERNATURAL CREATURES, MAYA**  
 A LIMITED EDITION FOUNTAIN PEN, NO. 003/188  
**Cap and Barrel:** The Maki-e taka-Hira-Raden cap and barrel decorated with various Mayan deities, the cap with a gilt clip, numbered end piece, uninked  
**Nib and Filling System:** Medium two tone nib, stamped VISCONTI 23K pD950 Firenze, Double Reservoir Power Filler  
**Accessories:** With a Visconti box, information booklet, identity card, fabric box pouch and outer card packaging

£1,500-2,500



248

**248**  
**MONTEGRAPPA, LA TORRE DI PISA**  
 A LIMITED EDITION GOLD COLOURED FOUNTAIN PEN, NO. 63/73, CIRCA 2007  
**Cap and Barrel:** Gold coloured cap and barrel, the blue resin cap with gold coloured clip and cap band, the barrel engraved with the Leaning Tower of Pisa  
**Nib and Filling System:** Medium two tone nib, piston filling system, uninked  
**Accessories:** Montegrappa box, guarantee booklet, information booklet and outer card packaging

£2,000-3,000



249

**249**  
**MONTEGRAPPA, PICCOLA DIAMANTI**  
 A LIMITED EDITION GOLD COLOURED, DIAMOND AND RED RESIN FOUNTAIN PEN, NO. 67/77  
**Cap and Barrel:** Red resin cap and barrel with gold coloured fittings, the cap with gold coloured clip, diamond set cap bands, stamped 750  
**Nib and Filling System:** Medium gold coloured nib, stamped 18K 750, cartridge filling system, uninked  
**Accessories:** Montegrappa box, guarantee, cartridge convertor, ink cartridge polishing cloth and outer card packaging

£2,000-3,000



250

**250**  
**MONTEGRAPPA, FERRARI**  
 A LIMITED EDITION RACING RED LACQUER FOUNTAIN PEN, NO. 121/288  
**Cap and Barrel:** Racing red lacquer cap and barrel, with gold coloured clip, cap band and finger grip, the top with applied Ferrari logo of a prancing horse, signed Montegrappa for Ferrari, stamped with Milan, post 1968 control marks and stamped 750  
**Nib and Filling System:** The nib stamped 18K 750, cartridge filling system, uninked  
**Accessories:** Montegrappa Racing Red wooden box, instruction/guarantee booklet, information booklet

£800-1,200



251



252



253



254

**251**  
**S. T. DUPONT, OLYMPIO PLACE VENDOME**  
 A LIMITED EDITION PALLADIUM FOUNTAIN PEN NO. 44/1810, CIRCA 2010  
**Cap and Barrel:** Palladium cap and barrel, the cap with a clip and set with eight hematite stones  
**Nib and Filling System:** Medium white gold coloured nib, stamped 18K 750, cartridge filling system  
**Accessories:** S. T. Dupont box, guarantee card, information booklet, instruction booklet, cartridge convertor, box of six ink cartridges and outer card packaging

£200-300

**252**  
**TIBALDI, SANCTUS MICHAEL ARCHANGELUS**  
 A LIMITED EDITION SILVER COLOURED AND HAND PAINTED FOUNTAIN PEN, NO. 054/324  
**Cap and Barrel:** Silver coloured overlaid cap and barrel, the cap with foliate overlay over black resin and with a clip, the barrel silver coloured overlaid and painted with the Archangel Michael standing over the devil, stamped with Caserta, post 1968 .925 standard mark  
**Nib and Filling System:** Medium two tone nib, stamped 18K 750, piston filling system, uninked  
**Accessories:** Tibaldi box, certificate of authenticity, information booklet and outer card packaging

£1,500-2,500

**253**  
**ROMAINE JEROME, TITANIC DNA**  
 A LIMITED EDITION FOUNTAIN PEN, NO. 58/88, CIRCA 2009  
**Cap and Barrel:** Palladium, steel and brass cap and barrel, the cap with a porthole viewing window to the nib and a clip, the end of the barrel with a replica of the ship's wheelhouse mechanism and a band of rusted steel from the Titanic  
**Nib and Filling System:** Two tone nib stamped 18K 750, piston filling system, uninked  
**Accessories:** Romaine Jerome box, international warranty/instruction booklet, letter of compliance from Harland and Wolff, and white card box

£1,000-1,500

**254**  
**ROMAINE JEROME, TITANIC DNA**  
 A LIMITED EDITION FOUNTAIN PEN, NO. 35/88, CIRCA 2009  
**Cap and Barrel:** Palladium, steel and brass cap and barrel, the cap with a porthole viewing window to the nib and a clip, the end of the barrel with a replica of the ship's wheelhouse mechanism and a band of rusted steel from the Titanic  
**Nib and Filling System:** Two tone nib stamped 18K 750, piston filling system, uninked  
**Accessories:** Romaine Jerome box and international warranty/instruction booklet

£2,000-3,000



**255**  
**SHEAFFER, CENTENNIAL LIMITED EDITION COLLECTION**  
 A LIMITED EDITION 18 CARAT GOLD FOUNTAIN PEN, NO. 15/45, CIRCA 2013  
**Cap and Barrel:** 18 carat gold cap and barrel, the cap with a diamond set clip and engraved with portraits of Walter A. Sheaffer and his son Craig R. Sheaffer, the barrel engraved with the first Sheaffer factory, hallmarked for London 2013  
**Nib and Filling System:** Medium gold coloured nib stamped 18K 750, cartridge filling system, uninked  
**Accessories:** Sheaffer box, certificate of authenticity, information book, dust bag, outer card packaging and card sleeve

£4,000-6,000

255



256



257



258



259



260



261



262



263

**256**  
 CARAN D'ACHE, ARTISTE COLLECTION BALAJI  
 A LIMITED EDITION SILVER COLOURED AND BLACK RESIN FOUNTAIN PEN, NO. 015/108  
**Cap and Barrel:** Black resin cap and barrel with silver coloured overlay of Lord Balaji, temple and scroll decoration, the cap with a clip and inset with a cabochon coralline, stamped Ag800  
**Nib and Filling System:** Medium white gold nib, stamped 18c 750, cartridge filling system, uninked  
**Accessories:** Caran d'Ache box, guarantee cards, owner's guide book, cartridge convertor, two ink cartridges and outer card packaging

£700-1,000

**257**  
 CARAN D'ACHE, ARTISTE COLLECTION, BAMBOO  
 A LIMITED EDITION SILVER COLOURED AND GREEN RESIN FOUNTAIN PEN, NO. 14/88  
**Cap and Barrel:** Green resin cap and barrel with silver coloured bamboo and sparrow overlay, the cap inset with cabochon chrysoprase and with a bamboo clip, stamped Ag800  
**Nib and Filling System:** Medium white gold nib, stamped 18c 750, cartridge filling system, uninked  
**Accessories:** Caran d'Ache box, guarantee cards, sealed information booklet, cartridge convertor, two ink cartridges and outer card packaging

£2,000-3,000

**258**  
 CARAN D'ACHE, PHOENIX  
 A LIMITED EDITION SILVER COLOURED FOUNTAIN PEN, NO. 16/88  
**Cap and Barrel:** The bronze coloured cap and barrel with pierced silver coloured overlay decorated with phoenixes amongst foliage and Chinese characters, stamped Metal Ag 800, the caps end piece with a circular cabochon yellow stone,  
**Nib and Filling System:** Medium white coloured nib, stamped 18C 750, cartridge convertor filling system, uninked  
**Accessories:** Caran d'Ache box, certificate of authenticity card, information book and outer card packaging

£2,000-3,000

**259**  
 CARAN D'ACHE, DRAGON  
 A LIMITED EDITION SILVER COLOURED AND RED LACQUER FOUNTAIN PEN, NO. 22/88, CIRCA 2010  
**Cap and Barrel:** Silver coloured dragon overlay and red lacquer cap and barrel, the cap inset with a pearl, stamped AG800  
**Nib and Filling System:** Medium white gold coloured nib, stamped 18C 750, cartridge filling system, uninked  
**Accessories:** Caran d'Ache box, guarantee, limited edition card, instruction booklet, cartridge convertor, two ink cartridges and outer card packaging

£2,000-3,000

**260**  
 CARAN D'ACHE, 1010, HOROLOGERIE  
 A LIMITED EDITION RHODIUM COATED AND SILVER PLATED FOUNTAIN PEN, NO. 246/500, CIRCA 2010  
**Cap and Barrel:** Rhodium coated and silver plated cap and barrel, the cap with a clip, the barrel decorated with movement wheels, the end of the barrel with a ruby set balance wheel  
**Nib and Filling System:** Medium white gold coloured nib, stamped 18C 750, cartridge filling system, uninked  
**Accessories:** Caran d'Ache box, certificate of authenticity cards, information book polishing cloth and outer card packaging

£3,000-5,000

**261**  
 CARAN D'ACHE, SECRET JOURNEY I VOLTAIRE  
 A LIMITED EDITION SILVER PLATED FOUNTAIN PEN, NO. 38/300  
**Cap and Barrel:** Silver plated cap and barrel decorated with mountains, rivers and lakes of Lausanne in black lacquer, the cap with a clip, the barrel with secret mechanism to reveal a quote and diamond  
**Nib and Filling System:** Medium white gold coloured nib, stamped 18C 750, cartridge filling system, uninked  
**Accessories:** Caran d'Ache box, authenticity cards, owners guide book, two maps, information book, polishing cloth, cartridge converter, bottle of ink and outer card packaging

£2,000-3,000

**262**  
 CARAN D'ACHE, SECRET JOURNEY II CHATEBRIAND  
 A LIMITED EDITION ROSE GOLD PLATED AND BLACK LACQUER FOUNTAIN PEN, NO. 87/300  
**Cap and Barrel:** Rose gold plated cap and barrel decorated with mountains, rivers and lake shore of Geneva in black lacquer, the cap with a clip, the barrel with secret mechanism to reveal a quote and ruby  
**Nib and Filling System:** Medium gold coloured nib, stamped 18C 750, cartridge filling system, uninked  
**Accessories:** Caran d'Ache box, authenticity cards, owners guide book, two maps, polishing cloth, cartridge converter, bottle of ink and outer card packaging

£2,000-3,000

**263**  
 CARAN D'ACHE, SECRET JOURNEY III TOLSTORY  
 A LIMITED EDITION YELLOW GOLD PLATED AND WHITE LACQUER FOUNTAIN PEN, NO. 167/300  
**Cap and Barrel:** Yellow gold plated and white lacquer cap and barrel decorated with mountains and the rivers that run into Lake Léman, the cap with a clip, the barrel with secret mechanism to reveal a quote and a sapphire  
**Nib and Filling System:** Medium gold coloured nib, stamped 18C 750, cartridge filling system, uninked  
**Accessories:** Caran d'Ache box, authenticity cards, owners guide book, two maps, polishing cloth, cartridge converter, bottle of ink and outer card packaging

£2,000-3,000

264

PARKER, 125TH ANNIVERSARY DUOFOLD GIANT  
A LIMITED EDITION GOLD COLOURED, BLACK RESIN AND  
DIAMOND SET FOUNTAIN PEN, NO. 004/125

Cap and Barrel: Gold coloured overlaid, black resin and diamond set cap  
and barrel, the cap with a clip, stamped with a poinçon

Nib and Filling System: Two tone nib, stamped 18K 750, cartridge filling  
system, uninked

Accessories: Parker box, certificate of authenticity, information book, pen  
stand, polishing cloth, cartridge convertor, box of cartridges, bottle of ink,  
outer card packaging and sleeve

£4,000-6,000



265

CARTIER, EXCEPTIONAL DRAGON DE CARTIER DECOR  
A LIMITED EDITION SILVER COLOURED, BLUE RESIN AND PEARL  
FOUNTAIN PEN, NO. 284/888, CIRCA 2008

Cap and Barrel: Silver coloured, blue resin and pearl set cap and  
barrel, the cap applied with a silver coloured dragon with cabochon  
emerald set eyes and holding a pearl

Nib and Filling System: White gold coloured nib, stamped 18K 750,  
cartridge filling system, uninked

Accessories: Cartier box, guarantee card, two cartridge convertors  
and a box of ten ink cartridges

£2,500-3,500



## IMPORTANT NOTICES TO WATCH BUYERS

### DAMAGE, RESTORATION, ALTERATION

Although every effort is made to note any damage, restoration or alterations, the absence of any such information in catalogue descriptions does not imply the lot is in perfect condition and free from any such defects. Prospective buyers should satisfy themselves as to the condition of any lot prior to bidding. All watches are serviced from time to time, and Dreweatts are unable to guarantee that the working parts of any watch movement, glass or crystal, winding crowns, watch bracelet, strap or buckle are the manufacturers' original parts, unless otherwise stated in the catalogue description. We are unable to make any representation in our catalogue descriptions or condition reports as to the authenticity of such parts. Dreweatts are unable to make any representation, nor make any comment on, the authenticity of diamonds, or other gemstones, set into watch dials, bezels, cases and bracelets.

### AUTHENTICATION

All watch movements have been inspected by Dreweatts watchmaker and specialists, and we have verified all inventory and movement numbers. For the information of potential bidders, all inventory and movement numbers are listed in the catalogue description for the relevant lot.

## IMPORTANT NOTICES TO JEWELLERY BUYERS

### DAMAGE, RESTORATION, ALTERATION

Although every effort is made to note any damage, restoration or alterations, the absence of any such information in catalogue descriptions does not imply the lot is in perfect condition and free for any such defects. Prospective buyers should satisfy themselves as to the condition of any lot prior to bidding.

### ENHANCEMENT

Prospective bidders should be aware that many coloured gems have been historically treated by a variety of methods to improve their appearance, both in terms of colour and transparency. Rubies and sapphires are routinely heat treated, emeralds are enhanced through the use of coloured and transparent oils and resins, and jadeite is routinely stained. These treatments, and others including irradiation and coating, are generally accepted by the jewellery trade as standard practice. Although most treatments are considered to be permanent, those gemstones which have been oiled may need to be re-treated to maintain their appearance. Any such treatments affect the market value of coloured gemstones, and Dreweatts pre-sale estimates published in the catalogue assume that all gemstones, unless otherwise stated in the catalogue, may have been enhanced. Dreweatts may obtain Gemmological Reports from a recognised laboratory where appropriate detailing any enhancements, or lack of, for certain gemstones, and such reports may be obtained for prospective bidders prior to the sale, provided such requests are made at least three weeks before the sale, and that the requesting party has pre-paid for such a report. However it is not possible for Dreweatts to obtain reports for every stone offered in the sale.

In the absence of a gemmological laboratory report, it is not possible for Dreweatts to make any comment on the possibility that any gemstone in any lot may have been subject to enhancement.

Dreweatts catalogue descriptions and condition reports adhere to the guidelines laid out in the 'Blue Book' of CIBJO, the International Jewellery Confederation.

### IMPORT/EXPORT RESTRICTIONS

There may be Import Restrictions into some territories outside the United Kingdom placed on certain watch brands, or on the importation of watches with straps composed of animal skins which may fall under CITES Regulations. It is the sole responsibility of the buyer to comply with all Export/Import regulations and potential bidders are strongly recommended to check with their shipping agent as to any such regulations that may apply to any lot. Dreweatts are not shippers and are unable to offer any advice regarding such regulations.

### CONDITION REPORTS

Dreweatts condition reports will identify whether a watch functions at the time of cataloguing, and suggest possible, but not comprehensive, restoration work that may need to be carried out for the watch to function properly. Dreweatts are unable to test watches for accuracy or running to time, and we cannot guarantee that any watch will function when purchased from us.

As we have examined all watch movements by removing the case backs, we cannot guarantee that water resistant watches will remain water resistant following purchase from us. Dreweatts recommend that any watch purchased from us is subsequently overhauled by a competent watchmaker to ensure proper functioning.

### WEIGHTS

All gram weights have been obtained using an electronic balance, but weights stated in the catalogue are approximate and for guidance only, and potential bidders should satisfy themselves as to their accuracy. '...approximately 1.20 carats total,...' all such stone weights are estimated using standard equipment and formulae, and are subject to the limitations imposed by the mount.

'...weighing 1.20 carats,...' where the description reads as such, the stones in question have been removed from the mount and weighted using an electronic balance.

### SIGNATURES

'...by Lacluche,...' in our opinion is a piece made by or for the jeweller, bearing relevant signatures, maker's marks, and where appropriate, the maker's inventory number/s.

'...signed Lacluche,...' in our opinion is a piece retained by the jeweller, but not necessarily made by them. This may also mean that the piece has been mounted by the jeweller using stones supplied by the client; a special commission from a client's design; or has been altered or later added to.

### COLOURED STONES OF BURMA (MYANMAR) ORIGIN

Buyers should be aware that certain territories (notably the United States of America) have import restrictions on certain coloured gemstones. All gemstones that maybe of Burma (Myanmar) origin, notably rubies and jadeite, may require a certificate of origin before they can be imported. Prospective bidders for such gemstones should check with their shipper, and relevant Government authorities regarding any necessary certification prior to bidding. Whilst Dreweatts are able to suggest a number of Gemmological Laboratories for such certification, we are unable to carry out any such certification for potential bidders or buyers.

Please see [Conditions of Business and Conditions of Sale on the following pages](#).

Dreweatts & Dreweatts 1759 are trading names of Dreweatts 1759 Ltd. Dreweatts 1759 Ltd is registered in England, company number: 10758982, registered office: C/O Bishop Fleming LLP, 10 Temple Back, Bristol, BS1 6FL.

## IMPORTANT NOTICES

### BUYING AT DREWEATTS

There are several ways you can bid at a Dreweatts auction; in person, by leaving a commission or absentee bid, on the telephone where available and live via the internet – please make arrangements before the sale. THIS NOTICE APPLIES ONLY TO A PERSON WHO WISHES TO BID IN PERSON, OR BY LEAVING A COMMISSION OR ABSENTEE BID, AT A DREWEATTS PUBLIC AUCTION. For bidding at an online auction or for online bidding at a public auction please see our Online Auction Terms published on our website at [www.dreweatts.com](http://www.dreweatts.com).

### BIDDING IN PERSON

If intending to buy you are required to register your name and details at reception prior to the commencement of the auction. You will be required to provide a proof of identity and address to register for bidding. You will then be allocated a bidding number, which you use when bidding for an item.

### COMMISSION BIDS

Dreweatts will execute bids on your behalf if you are unable to attend the sale. Commission or absentee bids are accepted either directly at reception, or can be sent by post, fax, email, telephone or via the website: [www.dreweatts.com](http://www.dreweatts.com).

Dreweatts will add these bids to the auctioneers' sale book and will undertake to purchase the lots on your behalf as cheaply as allowed by other bids and reserves. If two buyers submit identical commission bids Dreweatts may prefer the first bid received.

Dreweatts does not accept liability for failing to execute commission bids, or for any errors or omissions.

### CONDITION

Bidders must satisfy themselves as to the condition of each lot. Condition reports are available on request – see the Conditions of Business at the back of this catalogue forming part of these Auction Terms and Conditions for more information regarding condition reports. Requests for condition reports must be submitted by 4pm on the day prior to the auction; condition reports may be available alongside the lot description on the online catalogue at: [www.dreweatts.com](http://www.dreweatts.com).

### COMMISSION CHARGES

All purchases are subject to a buyer's premium, which is charged per lot at 26% of the hammer price (31.2% including VAT) up to and including £20,000, 25% (30% including VAT) of the hammer price from £20,001 up to and including £500,000, 20% (24% including VAT) of the hammer price from £500,001 up to and including £1,000,000 and 12.5% of the hammer price (15% including VAT) in excess of £1,000,000. A theta symbol (θ) indicates that the lot is a zero rated item and therefore not subject to VAT on the buyer's premium. This applies to bound books (manuscripts and printed), unframed maps and albums. In the event the lot has a dagger (†) beside the lot number in the catalogue, this indicates that the lot is owned by an entity or company required to pay VAT (generally not an Antique Dealer, as they operate under a dealers margin scheme). VAT is payable at 20% on the Hammer Price. Lots marked with a double dagger (‡) (presently a reduced rate of 5%) or Ω (presently at standard rate of 20%) have been imported from outside the UK to be sold at auction and therefore the buyer must pay the import VAT at the appropriate rate on the hammer price.

### PAYMENT

Payment will be accepted, if you are a successful bidder, by debit card

issued in the name of the Buyer by a UK bank and registered to a UK billing address; by all major UK issued credit cards issued in the name of the Buyer and registered to a UK billing address with the exception of Diners Club; by bank transfer direct into our bank account, Bank Details: NatWest, 30 Market Place, Newbury, Berkshire RG14 5AG. Account Name: Dreweatts 1759 Ltd. A/C: 62412949, Sort Code: 60-15-07, BIC: NWBKGB2L, IBAN: GB21NWBK60150762412949. The name of the bank account holder should match the name of the buyer. First time buyers who are not present at the saleroom are requested to pay by bank transfer.

### Υ CITES REGULATIONS

Please note that lots marked with the symbol (Υ) in this catalogue may be subject to CITES Regulations when exported. Relevant CITES Regulations may be found at [www.gov.uk/guidance/cites-imports-and-exports](http://www.gov.uk/guidance/cites-imports-and-exports).

### COLLECTION OR DELIVERY

Before being able to collect your purchases you are required to pay the hammer price, plus the applicable commissions, and obtain a receipt acknowledging payment. Collection of the purchased lots is at the purchaser's risk and expense and whilst Dreweatts do not provide packing and despatch service we can suggest some carriers.

Dreweatts also require that all purchased items are collected within four working days of the sale to avoid a storage charge being applied.

### STORAGE CHARGES

All items not collected by 4pm, within four working days of the sale, will be automatically removed to commercial storage and subject to a minimum storage charge of £20 (plus VAT) per lot and to a further storage charge of £3 (plus VAT) per lot per part or full day thereafter. These charges will be the sole liability of the purchaser and will be billed directly to them by Sackville-West Moving & Storing; Sackville-West Moving & Storing may be willing to adjust their charges if they are instructed by the purchaser to deliver to them. On payment of all sales and storage costs, items will be available for collection by appointment from Sackville-West Moving & Storing (Andover), tel: + 44 (0) 2080 909988, email: [office@sackvillewest.co.uk](mailto:office@sackvillewest.co.uk). These charges are set by Sackville-West Moving & Storing; we recommend that you contact them directly regarding queries relating to these charges and other questions relating to storage. Staff at the saleroom will be unable to answer questions relating to items that have been removed from the saleroom.

### FURTHER INFORMATION

The colours printed in this catalogue are not necessarily a true reflection of the actual item. All weights and measures given in the catalogue should be regarded as approximate.

### VALUATION SERVICES

Dreweatts provides a range of confidential and professional valuation services to private clients, solicitors, executors, estate managers, trustees and other professional partners. These services include auction valuations, insurance valuations, probate valuations, private treaty valuations, valuations for family division or for tax purposes. For more information, please see our website: [www.dreweatts.com](http://www.dreweatts.com).

For directions to Donnington Priory, please see our website: [www.dreweatts.com](http://www.dreweatts.com).

Parking is available at Donnington Priory in two car parks on either side of the saleroom.

Detailed condition reports for all lots are available from our website [www.dreweatts.com](http://www.dreweatts.com), and upon direct request to the Saleroom.

Please note that Dreweatts are unable to give verbal condition reports for any lot, and all condition reports will be given in writing via our website [www.dreweatts.com](http://www.dreweatts.com). Dreweatts jewellery specialists and qualified gemmologists are available during the view to answer any queries.

Dreweatts are unable to offer any form of packing, dispatch or shipping services, and clients should make their own collection arrangements for purchased lots. Dreweatts are happy to suggest the services of a number of dispatch and shipping carriers.



## INFORMATION FOR BUYERS AT PUBLIC AUCTIONS

1. **INTRODUCTION.** The following notes are intended to assist Bidders and Buyers, particularly those inexperienced or new to our salerooms. All of our auctions and sales are conducted on our printed Auction Terms and Conditions, including these Conditions of Sale and Business, which are readily available for inspection and normally accompany catalogues. Our staff will be happy to help you if there is anything you do not fully understand.

Any particular auction and/or any particular lot in an auction may be subject to different or additional terms which will be published in our auction catalogue. All auctions and sales of wines and spirits, jewellery, watches and clocks are subject to the special terms set out in the relevant Notices in relation to those items published in our auction catalogue and, in the event of any conflict or inconsistency, those special terms prevail over any other terms in our Auction Terms and Conditions. By bidding at the auction, you agree to be bound by these terms.

2. **AGENCY.** As auctioneers we usually act as agents for the seller whose identity, for reasons of confidentiality, is not normally disclosed. Accordingly if you buy at auction your contract for the item or items purchased is with the seller and not with us as the auctioneer.

3. **ESTIMATES.** Estimates are designed to help buyers gauge what sort of sum might be involved for the purchase of a particular lot. Estimates may change and should not be thought of as the sale price. The lower estimate may represent the reserve price and certainly will not be below it. Estimates do not include the Buyer's Premium or VAT (where chargeable). Estimates are prepared some time before the sale and may be altered by announcement before the sale. They are in no sense definitive.

4. **BUYER'S PREMIUM.** The Conditions of Sale forming part of our Auction Terms and Conditions require the buyer to pay a buyer's premium on the hammer price of each lot purchased. The buyer's premium is 26% of the hammer price up to and including £20,000, 25% of the hammer price from £20,001 up to and including £500,000, 20% of the hammer price from £500,001 up to and including £1,000,000, and 12.5% of the hammer price in excess of £1,000,000. VAT at the prevailing rate of 20% is added to buyer's premium and additional charges as defined below.

5. **VAT.** A theta symbol ( $\theta$ ) indicates that the lot is a zero rated item and therefore not subject to VAT on the buyer's premium. This applies to bound books (manuscripts and printed), unframed maps and albums. A dagger symbol ( $\dagger$ ) indicates that VAT is payable by the purchaser at the standard rate (presently 20%) on the hammer price as well as being an element in the buyers' premium. This imposition of VAT is likely to be because the seller is registered for VAT within the European Union and is not operating the Dealers Margin Scheme or because VAT is due at 20% on import into the UK. A double dagger ( $\ddagger$ ) indicates that the lot has been imported from outside the UK and the present position is that these lots are liable to a reduced rate of Import VAT currently 5% on the hammer price. ( $\Omega$ ) indicates that the lot has been imported from outside the UK and these lots are liable to the standard rate of Import VAT currently 20% on the hammer price. Lots which appear without the above symbols indicate that no VAT is payable on the hammer price; this is because such lots are sold using the Auctioneers Margin Scheme and it should be noted that the VAT included within the buyers' premium is not recoverable as input tax.

6. **DESCRIPTION AND CONDITION.** Condition reports are provided on our website or upon request. The absence of a report does not imply that a lot is without imperfections. The detail in a report will reflect the estimated value of the lot. Large numbers of such requests received shortly before the sale may mean that reports cannot be provided for all lots. Members of staff are not trained restorers or conservators and, particularly for higher value lots, you should obtain an opinion from such a professional. Dreweatts is not liable for damage to gilded picture frames, plaster picture frames or picture frame glass; if a Lot is or becomes dangerous, we may dispose of it without notice to bidders in advance in any manner we see fit and will be under no liability for doing so. We recommend that you always view a lot in person.

We are dependent on information provided by the seller about a lot and whilst we may inspect lots and act reasonably in taking a general view about them we are normally unable to carry out a detailed examination and frequently no examination of lots in order to ascertain their condition in the way in which it would be wise for a buyer to do. Intending buyers have ample opportunity for inspection of goods and, therefore, accept responsibility for inspecting and investigating lots in which they may be interested and the corresponding risk should they not do so. Please note carefully the exclusion of liability for the condition of lots contained in the Conditions of Sale. Neither the seller nor we, as the auctioneers, accept any responsibility for their condition. In particular, mechanical objects of any age are not guaranteed to be in working order. However, in so far as we have examined the goods and make a representation about their condition in the auction catalogue, we shall be liable for any defect which is not reflected in that representation and which

that examination ought to have revealed to the auctioneer but which would not have been revealed to the buyer had the buyer examined the goods. Additionally, in specified circumstances lots misdescribed because they are 'deliberate forgeries' may be returned and repayment made. There is a 3 week time limit. (The expression 'deliberate forgery' is defined in our Conditions of Sale).

7. **ELECTRICAL GOODS.** These are sold as 'antiques' only and if bought for use must be checked over for compliance with safety regulations by a qualified electrician before use.

8. **EXPORT OF GOODS.** Buyers intending to export goods should ascertain (a) whether an export licence is required and (b) whether there is any specific prohibition on importing goods of that character because, e.g. they may contain prohibited materials such as ivory. Ask us if you need help.

Private overseas buyers can only receive goods free of VAT or have the VAT amount refunded if Dreweatts acts as exporter in relation to the sale, the goods are exported within 3 months of the sale and Dreweatts is in possession of adequate export documents. The VAT refunds are available for transactions exceeding £2,500. If you arrange for the goods to be picked up/delivered to you directly we will charge UK VAT at the appropriate rate and no refund will be available. Please note, buyers are responsible for completing the importation procedures as well as the payment of any relevant duty/VAT payable on importation into the destination country.

Where the purchase has been made in the business or trading name, VAT refund will be available on proof of export provided within 3 months of the sale.

9. **BIDDING.** Bidders will be required to register before the sale commences and lots will be invoiced to the name and address on the sale registration form. Bidders are required to provide a government issued identity document and a proof of address. Please enquire in advance about our arrangements for telephone bidding.

10. **COMMISSION BIDDING.** Commission bids may be left with the auctioneers indicating the maximum amount to be bid excluding buyers' premium. Dreweatts will add these bids to the auctioneers' sale book and they will be executed as cheaply as possible having regard to the reserve (if any) and competing bids. If two buyers submit identical commission bids the auctioneers may prefer the first bid received. Please enquire in advance about our arrangements for the leaving of commission bids by telephone or fax. Dreweatts does not accept liability for failing to execute commission bids, or for any errors or omissions.

11. **METHODS OF PAYMENT.** Payment will be accepted, if you are a successful bidder, by debit card issued in the name of the Buyer by a UK bank and registered to a UK billing address; by all major UK issued credit cards issued in the name of the Buyer and registered to a UK billing address with the exception of Diners Club; by bank transfer direct into our bank account, Bank Details: NatWest, 30 Market Place, Newbury, Berkshire RG14 5AG. Account Name: Dreweatts 1759 Ltd. A/C: 62412949, Sort Code: 60-15-07, BIC: NWBKGB2L, IBAN: GB21NWBK60150762412949. The name of the bank account holder should match the name of the buyer. First time buyers who are not present at the saleroom are requested to pay by bank transfer.

12. **COLLECTION AND STORAGE.** Please note what the Conditions of Sale state about collection and storage. It is important that goods are paid for and collected promptly. Any delay may involve the buyer in paying storage charges.

13. **λ DROIT DE SUITE ROYALTY CHARGES.** From 1st January 2012 all UK art market professionals (which includes but is not limited to; auctioneers, dealers, galleries, agents and other intermediaries) are required to collect a royalty payment for all works of art that have been produced by qualifying artists each time a work is re-sold during the artist's lifetime and for a period up to 70 years following the artists death. This payment is only calculated on qualifying works of art which are sold for a hammer price more than the UK sterling equivalent of EURO 1,000 – the UK sterling equivalent will fluctuate in line with prevailing exchange rates. It is entirely the responsibility of the buyer to acquaint himself with the precise EURO to UK Sterling exchange rate on the day of the sale in this regard, and the auctioneer accepts no responsibility whatsoever if the qualifying rate is different to the rate indicated. All items in this catalogue that are marked with  $\lambda$  are potentially qualifying items, and the royalty charge will be applied if the hammer price achieved is more than the UK sterling equivalent of EURO 1,000. The royalty charge will be added to all relevant buyers' invoices, and must be paid before items can be cleared. All royalty charges are passed on to the Design and Artists Copyright Society ('DACS'), no handling costs or additional fees with respect to these charges will be retained by the auctioneers. The royalty charge that will be applied to qualifying items which achieve a hammer price of more than the UK sterling equivalent of EURO 1,000, but less than the UK sterling equivalent of EURO 50,000 is 4%. For qualifying items that sell for more than the UK sterling equivalent of EURO 50,000 a sliding scale of royalty charges will apply – for a complete list of the royalty charges and threshold levels, please see [www.dacs.org.uk](http://www.dacs.org.uk). There is no VAT payable on this royalty charge.

## TERMS OF CONSIGNMENT FOR SELLERS IN PUBLIC AUCTIONS

The sale of goods at our public auctions and a seller's relationship with us are governed by our Auction Terms and Conditions including these Terms of Consignment for Sellers in Public Auctions and our Conditions of Sale for Public Auctions. Any particular auction and/or any particular lot in an auction may be subject to different or additional terms which will be published in our auction catalogue or separately announced prior to the auction. All auctions and sales of wines and spirits, jewellery, watches and clocks are subject to the special terms set out in the relevant Notices in relation to those items published in our auction catalogue and, in the event of any conflict or inconsistency, those special terms prevail over any other terms in our Auction Terms and Conditions. Please note that our Auction Terms and Conditions including these Terms of Consignment for Sellers in Public Auctions and our Conditions of Sale for Public Auctions relate to auctions held in our salerooms and we have separate terms and conditions for our online auctions.

If you, or another person acting on your behalf, provide goods to us to sell on your behalf at one of our auctions this signifies that you agree to and will comply with our Auction Terms and Conditions including these Terms of Consignment for Sellers in Public Auctions and our Conditions of Sale for Public Auctions.

1. **INTERPRETATION.** In these Terms the words 'you', 'yours', etc. refer to the Seller and if the consignment of goods to us is made by an agent or otherwise on the Seller's behalf we assume that the Seller has authorised the consignment and that the consignor has the Seller's authority to contract. All obligations that apply to the Seller under these Terms of Consignment for Sellers in Public Auctions shall apply to the owner of the goods and their agent jointly and separately. Similarly the words 'we', 'us', etc. refer to the Auctioneers.

2. **WARRANTY.** The Seller warrants that possession in the lots can be transferred to the Buyer with good and marketable title, free from any third party right and encumbrances, claims or potential claims. The Seller has provided all information concerning the item's ownership, condition and provenance, attribution, authenticity, import or export history and of any concerns expressed by third parties concerning the same.

3. **ALL COMMISSIONS.** and fees are subject to VAT at the prevailing rate.

4. **COMMISSION.** is charged to sellers and all selling terms are available from our salerooms.

5. **REMOVAL COSTS.** Items for sale must be consigned to the saleroom by any stated deadline and at your expense. We may be able to assist you with this process but any liability incurred to a carrier for haulage charges is solely your responsibility.

6. **LOSS AND DAMAGE OF GOODS**

(a) Loss and Damage Warranty - Dreweatts is not authorised by the FCA to provide insurance to its clients, and does not do so. However Dreweatts for its own protection assumes liability for property consigned to it at the lower pre-sale estimate until the hammer falls. To justify accepting liability, Dreweatts makes a charge of 1.5% of the hammer price plus VAT, subject to a minimum charge of £1.50, or if unsold 1.5% of our lower estimate. The liability assumed by Dreweatts shall be limited to the lower pre-sale estimate or the hammer price if the lot is sold. Dreweatts is not liable for damage to gilded picture frames, plaster picture frames or picture frame glass; if the Lot is or becomes dangerous, we may dispose of it without notice to you in advance in any manner we see fit and will be under no liability for doing so.

(b) If the owner of the goods consigned instructs us in writing not to take such action, the goods then remain entirely at the owner's risk unless and until the property in them passes to the Buyer or they are collected by or on behalf of the owner, and clause 6 (a) is inapplicable.

7. **ILLUSTRATIONS AND PHOTOGRAPHS.** The cost of any illustrations or photographs is borne by you. The copyright in respect of such illustrations and photographs shall be the property of us, the auctioneers, as is the text of the catalogue.

8. **MINIMUM BIDS AND OUR DISCRETION.** Goods will normally be offered subject to a reserve agreed between us before the sale in accordance with clause 9. We may sell Lots below the reserve provided we account to you for the same sale proceeds as you would have received had the reserve been the hammer price. If you specifically give us a "discretion" we may accept a bid of up to 10% below the formal reserve.

9. **RESERVES**

(a) You are entitled to place prior to the auction a reserve on any lot consigned, being the minimum hammer price at which that lot may be sold. Reserves must be reasonable and we may decline to offer goods which in our opinion would be subject to an unreasonably high reserve (in which case goods carry the storage and loss and damage warranty charges stipulated in these Terms of Consignment).

(b) A reserve once set cannot be changed except with our consent.

(c) Where a reserve has been set which we consider unreasonably high, an unsold charge will be payable in the event that the lots fails to sell, being the agreed selling terms calculated on the reserve, LDW at 1.5% and any photographic charges.

(d) Where a reserve has been placed only we may bid on your behalf and only up to the reserve (if any) and you may in no circumstances bid personally.

(e) Reserves are not usually accepted for lots expected to realise below £100.

10. **ELECTRICAL ITEMS.** These are subject to detailed statutory safety controls. Where such items are accepted for sale you accept responsibility for the cost of

testing by external contractors. Goods not certified as safe by an electrician (unless antiques) will not be accepted for sale. They must be removed at your expense on your being notified. We reserve the right to dispose of unsafe goods as refuse, at your expense.

11. **SOFT FURNISHINGS.** The sale of soft furnishings is strictly regulated by statute law in the interests of fire safety. Goods found to infringe safety regulations will not be offered and must be removed at your expense. We reserve the right to dispose of unsafe goods as refuse, at your expense. The rights of disposal referred to in clause 10 and 11 are subject to the provisions of The Torts (Interference with Goods) Act 1977.

12. **DESCRIPTION.** Please assist us with accurate information as to the provenance, lawful import etc. of goods where this is relevant. There is strict liability for the accuracy of descriptions under modern consumer legislation and in some circumstances responsibility lies with sellers if inaccuracies occur. We will assume that you have approved the catalogue description of your lots and that your lots match those descriptions unless informed to the contrary. Where we are obliged to return the price to the buyer when the lot is a deliberate forgery under Condition 15 of the Conditions of Sale and we have accounted to you for the proceeds of sale you agree to reimburse us the sale proceeds and in any event within 7 days of our written notice to do so.

13. **UNSOLD.** If an item is unsold it may at our discretion be re-offered at a future sale. Where in our opinion an item is unsaleable you must collect such items from the saleroom promptly on being so informed. Otherwise, storage charges may be incurred. We reserve the right to charge for storage in these circumstances at a reasonable daily rate.

14. **WITHDRAWN AND BOUGHT IN ITEMS.** These are liable to incur a charge of 15% commission, 1.5 % Loss and Damage Warranty and any other costs incurred including but not limited to illustration and restoration fees all of these charges being subject to VAT on being bought in or withdrawn after being catalogued.

15. **CONDITIONS OF SALE.** You agree that all goods will be sold on our Conditions of Sale for Public Auctions. In particular you undertake that you have the right to sell the goods either as owner or agent for the owner with good and marketable title and free and clear of any third party rights or claims. You undertake to compensate us and any buyer or third party for all losses liabilities, costs and expenses suffered or incurred arising out of or in connection with any breach of this undertaking. We will also, at our discretion, and as far as practicable, confirm that an item consigned for sale does not appear on the Art Loss register, which is administered by an independent third party.

16. **DUE DILIGENCE CHECKS AND ANTI-MONEY LAUNDERING PROCEDURES.** Under the money laundering regulations in force we are required to carry out relevant due diligence checks. This includes verifying the identity of all customers we transact with as well as any beneficial owners on behalf of whom they may transact. Vendors who are unable to or refuse to supply required identification documents and proof of address will not be able to consign to Dreweatts auctions. Copies of customer due diligence checks will be stored for as long as it is necessary to satisfy legal requirements in an appropriate storage facility, which for the avoidance of doubt may include storage solely in electronic form. We reserve the right to withhold the monies owed until the vendor provides the information necessary to complete the anti-money laundering checks.

17. **AUTHORITY TO DEDUCT COMMISSION AND EXPENSES AND RETAIN PREMIUM AND INTEREST**

(a) You authorise us to deduct commission at the stated rate and all expenses incurred for your account from the hammer price and consent to our right to retain beneficially the premium paid by the buyer in accordance with our Conditions of Sale for Public Auctions and any interest earned on the sale proceeds until the date of settlement.

(b) In case of lots unsold at auction you authorise us at our discretion to reoffer such lots and negotiate a sale within seven days of the auction date, in which case the same charges will be payable as if such lots had been sold at auction and so far as appropriate these Terms apply.

18. **WAREHOUSING.** We disclaim all liability for goods delivered to our saleroom without sufficient sale instructions and reserve the right to make minimum warehousing charge of £10 per lot per day. Unsold lots are subject to the same charges if you do not remove them within a reasonable time of notification. If not removed within three weeks we reserve the right to sell them and defray charges from any net proceeds of sale or at your expense to consign them to the local authority for disposal.

19. **SETTLEMENT.** After sale settlement of the net sum due to you normally takes place within 28 days of the sale unless the buyer has not paid for the goods or the checks necessary under the current Money Laundering Regulations have not been completed. In this case no settlement will then be made but we will take your instructions in the light of our Conditions of Sale for Public Auctions. You authorise any sums owed by you to us on other transactions to be deducted from the sale proceeds. You must note the liability to reimburse the proceeds of sale to us as under the circumstances provided for in Condition 12 above. You should therefore bear this potential liability in mind before parting with the proceeds of sale until the expiry of 28 days from the date of sale.

# CONDITIONS OF SALE FOR PUBLIC AUCTIONS

Dreweatts carries on business with bidders, buyers and all those present in the auction room prior to or in connection with a sale by auction at our salerooms on our Auction Terms and Conditions or Public Auctions including these Conditions of Sale for Public Auctions and all bidders, buyers and others participating in a public auction accept that these terms apply to the exclusion of any terms and conditions contained in any of those person's own documents even if the same purport to provide that that person's own or some other terms prevail. Any particular public auction and/or any particular lot in an auction may be subject to different or additional terms which will be published in our online auction catalogue. Please note that our Auction Terms and Conditions including these Conditions of Sale for Public Auctions relate to auctions held in one of our salerooms and we have separate terms and conditions for our online auctions.

## 1. DEFINITIONS

In these Conditions:

- (a) "auctioneer" means the firm of Dreweatts or its authorised auctioneer, as appropriate;
- (b) "deliberate forgery" means an imitation made with the intention of deceiving as to authorship, origin, date, age, period, culture or source but which is unequivocally described in the catalogue as being the work of a particular creator and which at the date of the sale had a value materially less than it would have had if it had been in accordance with the description;
- (c) "hammer price" means the level of bidding reached (at or above any reserve) when the auctioneer brings down the hammer;
- (d) "terms of consignment" means the stipulated terms and rates of commission on which Dreweatts accepts instructions from sellers or their agents;
- (e) "total amount due" means the hammer price in respect of the lot sold together with any premium, Value Added Tax chargeable and any additional charges payable by a defaulting buyer under these Conditions;
- (f) "sale proceeds" means the net amount due to the seller, being the hammer price of the lot sold less commission at the stated rate, Value Added Tax chargeable and any other amounts due to us by the seller in whatever capacity and however arising;
- (g) "You", "Your", etc. refer to the buyer as identified in Condition 2.
- (h) The singular includes the plural and vice versa as appropriate.

## 2. BIDDING PROCEDURES AND THE BUYER

- (a) Bidders are required to register their particulars before bidding by completing a sale registration form and to satisfy any security arrangements before entering the auction room to view or bid;
- (b) Under the money laundering regulations in force we are required to verify the identity of all customers we transact with as well as any beneficiaries on behalf of whom they may transact. Customers who are unable to or refuse to supply required identification documents and proof of address will not be able to bid in Dreweatts auctions. Copies of customer due diligence checks will be stored for as long as it is necessary to satisfy legal requirements in an appropriate storage facility which for the avoidance of doubt may include storage solely in electronic form;
- (c) the maker of the highest bid accepted by the auctioneer conducting the sale shall be the buyer at the hammer price and any dispute about a bid shall be settled at the auctioneer's absolute discretion by reoffering the Lot during the course of the auction or otherwise. The auctioneer shall act reasonably in exercising this discretion.
- (d) Bidders shall be deemed to act as principals;
- (e) Our right to bid on behalf of the seller is expressly reserved up to the amount of any reserve and the right to refuse any bid is also reserved.

3. **INCREMENTS.** Bidding increments shall be at the auctioneer's sole discretion.

4. **THE PURCHASE PRICE.** The buyer shall pay the purchase price together with a premium thereon of 30% which shall include VAT on the premium at the rate imposed by law. The buyer will also be liable for any royalties payable under Droit de Suite as set out under Information for Buyers.

5. **VALUE ADDED TAX.** Value Added Tax on the hammer price is imposed by law on all items affixed with a dagger (†) or double dagger (‡). Value Added Tax is charged at the appropriate rate prevailing by law at the date of sale and is payable by buyers of relevant Lots. (Please refer to "Information for Buyers" for a brief explanation of the VAT position).

## 6. PAYMENT

(a) Immediately a Lot is sold you will:

- (i) give to us, if requested, proof of identity, and
- (ii) pay to us the total amount due or in such other way as is agreed by us.

(b) Any payments by you to us may be applied by us towards any sums owing from you to us on any account whatever without regard to any directions of you or your agent, whether expressed or implied.

(c) In order to comply with money laundering regulations we reserve the right to require proof of source of funds and/or confirmation of the nature and source of wealth for all receipts of monies from clients directly or from third parties for payments on behalf of clients. Lots will only be released once we have completed necessary checks under the current Money Laundering Regulations.

## 7. TITLE AND COLLECTION OF PURCHASES

(a) The ownership of any Lots purchased shall not pass to you until you have made payment in full to us of the total amount due.

(b) You shall at your own risk and expense take away any lots that you have purchased and paid for not later than 3 working days following the day of the auction after which you shall be responsible for any removal, storage and insurance charges.

(c) No purchase can be claimed or removed until it has been paid for and we have completed necessary checks under the current Money Laundering Regulations.

## 8. REMEDIES FOR NON-PAYMENT OR FAILURE TO COLLECT PURCHASES

(a) If any Lot is not paid for in full and taken away in accordance with these Conditions or if there is any other breach of these Conditions, we, as agent for the seller and on our own behalf, shall at our absolute discretion and without prejudice to any other rights we may have, be entitled to exercise one or more of the following rights and remedies:

- (i) to proceed against you for damages for breach of contract;
- (ii) to rescind the sale of that Lot and/or any other Lots sold by us to you;
- (iii) to resell the Lot (by auction or private treaty) in which case you shall be responsible for any resulting deficiency in the total amount due (after crediting any part payment and adding any resale costs). Any surplus so arising shall belong to the seller;
- (iv) to remove, store and insure the Lot at your expense and, in the case of storage, either at our premises or elsewhere;
- (v) to charge interest at a rate not exceeding 1.5% per month on the total amount due to the extent it remains unpaid for more than 3 working days after the sale;
- (vi) to retain that or any other Lot sold to you until you pay the total amount due;
- (vii) to reject or ignore bids from you or your agent at future auctions or to impose conditions before any such bids shall be accepted;
- (viii) to apply any proceeds of sale of other Lots due or in future becoming due to you towards the settlement of the total amount due and to exercise a lien (that is a right to retain possession of) any of your property in our possession for any purpose until the debt due is satisfied.

(b) We shall, as agent for the seller and on our own behalf pursue these rights and remedies only so far as is reasonable to make appropriate recovery in respect of breach of these conditions.

9. **THIRD PARTY LIABILITY.** All bidders, buyers and other members of the public on our premises are there at their own risk and must note the lay-out of the accommodation and security arrangements. Accordingly neither the auctioneer nor our employees or agents shall incur liability for death or personal injury or for the safety of the property of persons visiting prior to or at a sale (except in each case as may be required by law by reason of our negligence)

10. **COMMISSION BIDS.** Whilst prospective buyers are strongly advised to attend the auction and are always responsible for any decision to bid for a particular Lot and shall be assumed to have carefully inspected and satisfied themselves as to its condition, we will if so instructed clearly and in writing execute bids on their behalf. Neither the auctioneer nor our employees or agents shall be responsible for any failure to do so.

Where two or more commission bids at the same level are recorded we reserve the right in our absolute discretion to prefer the first bid so made.

11. **WARRANTY OF TITLE AND AVAILABILITY.** The seller warrants to the auctioneer and you that the seller is the true owner of the property consigned or is properly authorised by the true owner to consign for sale and is able to transfer good and marketable title to the property free from any third party claims.

Save as expressly set out above, all other warranties, conditions or other terms which might have effect between the Seller and you, or us and you, or be implied or incorporated by statute, common law or otherwise are excluded to the fullest extent permitted by law.

12. **AGENCY.** The auctioneer normally acts as agent only and disclaims any responsibility for default by sellers or buyers.

13. **TERMS OF SALE.** The seller acknowledges that Lots are sold subject to the stipulations of these Conditions in their entirety and on the Terms of Consignment for Public Auctions as notified to the consignor at the time of the entry of the Lot.

## 14. DESCRIPTIONS AND CONDITION

(a) Whilst we seek to describe lots accurately, it may be impractical for us to carry out exhaustive due diligence on each lot. Prospective buyers are given ample opportunities to view and inspect before any sale and they (and any independent experts on their behalf) must satisfy themselves as to the accuracy of any description applied to a lot. Prospective buyers also bid on the understanding that, inevitably, representations or statements by us as to authorship, genuineness, origin, date, age, provenance, condition or estimated selling price involve matters of opinion. We undertake that any such opinion shall be honestly and reasonably held and accept liability for opinions given negligently or fraudulently. Subject to the foregoing neither we the auctioneer nor our employees or agents nor the seller accept liability for the correctness of such opinions and all conditions and warranties, whether relating to description, condition or quality of lots, express, implied or statutory, are hereby excluded. Dreweatts is not liable for damage to gilded picture frames, plaster picture frames or picture frame glass; if the Lot is or becomes dangerous, we may dispose of it without notice to you in advance in any manner we see fit and will be under no liability for doing so. This Condition is subject to the next following Condition concerning deliberate forgeries and applies save as provided for in paragraph 6 "information to buyers".

(b) Private treaty sales made under these Conditions are deemed to be sales by auction for purposes of consumer legislation.

15. **FORGERIES.** Notwithstanding the preceding Condition, any Lot which proves to be a deliberate forgery (as defined) may be returned to us by you within 21 days of the auction provided it is in the same condition as when bought, and is accompanied by particulars identifying it from the relevant catalogue description and a written statement of defects. If we are satisfied from the evidence presented that the Lot is a deliberate forgery we shall refund the money paid by you for the Lot including any buyer's premium provided that (1) if the catalogue description reflected the accepted view of scholars and experts as at the date of sale or (2) you personally are not able to transfer a good and marketable title to us, you shall have no rights under this condition.

The right of return provided by this Condition is additional to any right or remedy provided by law or by these Conditions of Sale.

16. **PRIVACY NOTICE.** We will hold and process any personal data in relation to you in accordance with our current privacy policy, a copy of which is available on our website [www.dreweatts.com/privacy-policy/](http://www.dreweatts.com/privacy-policy/).

## GENERAL

17. We shall have the right at our discretion, to refuse admission to our premises or attendance at our auctions by any person.

18. (a) Any right to compensation for losses liabilities and expenses incurred in respect of and as a result of any breach of these Conditions and any exclusions provided by them shall be available to the seller and/or the auctioneer as appropriate.

(b) Such rights and exclusions shall extend to and be deemed to be for the benefit of employees and agents of the seller and/or the auctioneer who may themselves enforce them.

19. Any notice to any buyer, seller, bidder or viewer may be given by first class mail, email or Swiftmail in which case it shall be deemed to have been received by the addressee 48 hours after posting.

20. Special terms may be used in catalogue descriptions of particular classes of items in which case the descriptions must be interpreted in accordance with any glossary appearing at the commencement of the catalogue.

21. Any indulgence extended to bidders, buyers or sellers by us notwithstanding the strict terms of these Conditions or of the Terms of Consignment shall affect the position at the relevant time only and in respect of that particular concession only; in all other respects these Conditions shall be construed as having full force and effect.

22. These Conditions shall be governed by and construed in accordance with English law and the parties irrevocably submit to the exclusive jurisdiction of the English courts.

# DREWEATTS

## NEWBURY

Dreweatts  
Donnington Priory  
Newbury  
Berkshire RG14 2JE  
+44 (0) 1635 553 553  
[info@dreweatts.com](mailto:info@dreweatts.com)

## DEPUTY CHAIRMAN

Will Richards  
James Nicholson

## LONDON

Dreweatts / Bloomsbury Auctions  
16-17 Pall Mall  
St James's  
London SW1Y 5LU  
+44 (0) 20 7839 8880  
[info@bloomsburyauctions.com](mailto:info@bloomsburyauctions.com)  
[info@dreweatts.com](mailto:info@dreweatts.com)

## HAMBRIDGE LANE

Dreweatts  
1 Hambridge Lane  
Newbury  
Berkshire RG14 5TU  
+44 (0) 1635 553 553  
[info@dreweatts.com](mailto:info@dreweatts.com)

# GROUP DEPARTMENTS

## AUTOGRAPHS AND EPHEMERA

Ania Hanrahan  
[ahanrahan@dreweatts.com](mailto:ahanrahan@dreweatts.com)

## ASIAN CERAMICS AND WORKS OF ART

Mark Newstead  
Dr Yingwen Tao  
Lavinia Jin  
[asian@dreweatts.com](mailto:asian@dreweatts.com)

## BLOOMSBURY AUCTIONS BOOKS AND MANUSCRIPTS

Rupert Powell  
Dido Arthur  
Justin Phillips  
Max Hasler  
Richard Caroll  
[info@bloomsburyauctions.com](mailto:info@bloomsburyauctions.com)

## BRITISH AND EUROPEAN CERAMICS AND GLASS

Mark Newstead  
Geoffrey Stafford Charles  
[interiors@dreweatts.com](mailto:interiors@dreweatts.com)

## BRITISH AND EUROPEAN SCULPTURE AND WORKS OF ART

Silas Currie Leigh-Wood  
[sculpture@dreweatts.com](mailto:sculpture@dreweatts.com)

## CLOCKS AND SCIENTIFIC INSTRUMENTS

Leighton Gillibrand  
[clocks@dreweatts.com](mailto:clocks@dreweatts.com)

## COUNTRY SPORTING

Geoffrey Stafford Charles  
[gscharles@dreweatts.com](mailto:gscharles@dreweatts.com)

## DECORATIVE ARTS AND MODERN DESIGN

Geoffrey Stafford Charles  
Ashley Matthews  
[interiors@dreweatts.com](mailto:interiors@dreweatts.com)

## FURNITURE AND CARPETS

Ben Brown  
Elaine Binning  
Ashley Matthews  
William Turkington  
Mitchell Tompkins  
[furniture@dreweatts.com](mailto:furniture@dreweatts.com)

## HOUSE SALES AND PRIVATE COLLECTIONS

Joe Robinson  
Eloïse Kerr-Smiley  
Arabella Methuen  
[housesales@dreweatts.com](mailto:housesales@dreweatts.com)

## JEWELLERY, SILVER, WATCHES AND OBJECTS OF VERTU

James Nicholson  
Charlotte Peel  
Nick Mann  
Tessa Parry  
[jsw@dreweatts.com](mailto:jsw@dreweatts.com)

## LIVE STEAM AND MODEL ENGINEERING

WORKS OF ART  
Lucie Hobbs  
[transport@dreweatts.com](mailto:transport@dreweatts.com)

## MODERN AND CONTEMPORARY ART

Jennie Fisher  
Francesca Whitham  
Will Porter (Business Development)  
[pictures@dreweatts.com](mailto:pictures@dreweatts.com)

## OLD MASTERS, BRITISH AND EUROPEAN ART

Brandon Lindberg  
Lucy Darlington  
Daniele Amesso  
[pictures@dreweatts.com](mailto:pictures@dreweatts.com)

## WINE

Mark Robertson  
Caroline Shepherd  
Violette Jongbloed  
Dianne Wall  
[wine@dreweatts.com](mailto:wine@dreweatts.com)

## BUSINESS DEVELOPMENT

Will Richards  
Will Porter  
Joe Robinson  
Ana Moas  
Isabelle Rietkerk  
[irietkerk@dreweatts.com](mailto:irietkerk@dreweatts.com)

## CONSIGNMENT MANAGEMENT

Lucie Hobbs  
Christy Chambers  
[consignments@dreweatts.com](mailto:consignments@dreweatts.com)

## VALUATIONS FOR PROBATE, INSURANCE AND CGT

Emma Terry  
Janice Cliff  
[valuations@dreweatts.com](mailto:valuations@dreweatts.com)



DREWEATTS

EST. 1759