

THE COLLECTION OF SERENA, COUNTESS OF SNOWDON

TUESDAY 9 APRIL 2024 | NEWBURY

DREWEATTS
EST. 1759



THE COLLECTION OF
SERENA, COUNTESS OF SNOWDON



FOREWORD

BY
HUGH HENRY

It was always a treat to work with David and Serena and subsequently with just Serena and their homes did need to be furnished. Serena and I had a serious day out shopping for their house in the South of France. David's comment, no doubt having received the bills, was that he would never allow Serena and myself to go shopping again! Never the less, the day's shopping got to the South of France where it fitted in perfectly and looked beautiful. The only slight problem was the armoire for the main bedroom, which when positioned was at about 45 degrees from its wall; however with lots of laughs and some larger than wee blocks the situation was resolved.

When life changes it was wonderful to see these same things in a new situation and looking just as wonderful. Anyone considering buying some of these beautiful items should just do so, relax and enjoy them



THE COLLECTION OF SERENA, COUNTESS OF SNOWDON

TUESDAY 9 APRIL 2024 | NEWBURY

LOTS 1-174 | 10.30AM

VIEWING

Sunday 7 April: 10am–3pm

Monday 8 April: 10am–4pm

Day of sale: from 9am

ENQUIRIES & CONDITION REPORTS

housesales@dreweatts.com

NEWBURY

Donnington Priory, RG14 2JE

+44 (0) 1635 553 553

LONDON

16 Pall Mall, SW1Y 5LU

+44 (0) 20 7839 8880

info@dreweatts.com

dreweatts.com

DREWEATTS

EST. 1759

A GUIDE FOR BUYERS

REGISTRATION AND BIDDING

We advise bidders to register at least 48 hours in advance of the auction as we will need to complete Know Your Client checks on all registrants. We allow commission (or absentee bids), telephone bids, live online bidding, and in person bidding. More information is available in our Terms of Sale at the back of this catalogue, and on our website.

BUYER'S PREMIUM

26% of hammer price up to £20,000 (31.2% including VAT), plus

25% of hammer price from £20,001 up to £500,000 (30% including VAT), plus

20% of hammer price from £500,001 up to £1,000,000 (24% including VAT), plus

12.5% of hammer price in excess of £1,000,000 (15% including VAT)

ADDITIONAL CHARGES AND SYMBOLS

λ - Indicates that this lot may be subject to Droit de Suite (Artist Resale Right) royalty charges.

Y - Indicates that this lot may be subject to CITES regulations when exported.

† - Indicates that VAT is payable by the purchaser at the standard rate of 20% on the hammer price as well as being charged on the buyers' premium.

θ - Indicates that the lot is a zero rated item and therefore subject to buyer's premium of 26% exclusive of VAT (0% VAT).

≠ - Indicates that the lot is being sold whilst subject to temporary importation and that VAT is due at the reduced rate (5%).

Ω - Indicates that the lot has been imported from outside the UK and is liable to the standard rate of Import VAT currently 20% on the hammer price.

β - Indicates that the lot is offered in Bond. This applies to wine. Bidding will be at duty paid prices other than for those lots marked 'IN BOND/β'.

PAYMENT

If you are successful, you will receive an invoice to your registered email address, which will include detailed payment and collection information. If you wish to see this in advance, please visit our website. Items must be paid for in full and Know Your Client checks must be complete before we can release any purchases; first time buyers may also be subject to restrictions on the methods of payment we can accept. Please confirm this with the saleroom prior to collection.

COLLECTIONS, SHIPPING AND STORAGE

Unless otherwise stated below, purchases are available for collection from Dreweatts Donnington Priory salerooms from Monday to Friday (9am-5pm) by appointment only. If you wish to have the item shipped to you, please see the list of suggested shippers on our website.

Due to a busy schedule of sales, we are unable to store sold items at the salerooms; any items not collected after 4 working days of the sale (by 4pm) are removed to commercial storage and subject to a storage charge of £20 (plus VAT) per lot as well as a further storage charge of £3 (plus VAT) per lot per day thereafter. Please note for large consignments there may be additional charges. These charges will be the sole liability of the purchaser and will be billed directly to them by Sackville-West Moving & Storing. On payment of all sales and storage costs, items will be available for collection by appointment from Sackville-West Moving & Storing (Andover SP10 3SA).

CONDITIONS OF SALE

Any registration to bid is subject to acceptance of our Auction Terms and Conditions and Privacy Policy. Both are available on our website.

CONDITIONS OF ITEMS

Buyers must satisfy themselves to the condition of any item prior to bidding. Detailed condition reports and additional images are available upon request.

EXPORT OF ITEMS

If you intend to export goods out of the UK, we ask you to satisfy yourself as to whether there is prohibition on exporting goods of that character e.g. if the goods contain prohibited materials such as ivory or they require an Export Licence on the grounds of exceeding a specific age and/or monetary value threshold as set by the Export Licensing Unit. We are happy to make the submission of necessary applications on behalf of our buyers, but we will charge for this service only to cover the costs of our time.

GLOSSARY OF TERMS

Where relevant, for example Picture auctions or Clocks auctions, a glossary of cataloguing terms will be available at the back of our printed catalogues as well as via our website.

SPECIALISTS FOR THIS AUCTION



Joe Robinson
Head of House Sales and Private Collections (Head of Sale)



Eloise Kerr-Smiley
Administrator



Arabella Methuen
Administrator



Ashley Matthews MRICS
Furniture, Clocks, & Decorative Arts



Silas Currie Leigh-Wood
Sculpture & Works of Art



Geoffrey Stafford Charles MRICS
Ceramics & Glass



Brandon Lindberg
Old Master Pictures



Lucy Darlington MRICS
Old Master Pictures



Francesca Whitham
Modern & Contemporary Art



1

1
**THOMAS LANDSEER AFTER
 SIR EDWARD LANDSEER**
THE DEER PASS, 1854
 Mezzotint
 Published London,
 Henry Graves and Company
 44.5 x 95cm (17½ x 37¼ in.)
 Bird-eye maple frame

£400-600

2
AN OAK SETTEE
 19TH CENTURY
 Uniformly upholstered in a striped material, with
 carved and pierced lattice sides and scroll arms
 91cm high 195cm wide 75cm deep

Together with a pair of armchairs en-suite,
 decorated similarly, 19th Century, 91cm high,
 67.5cm wide, 75cm deep

and a throw cushion in Ikat style material
 with figures and crocodiles
 50cm high, 68cm wide

Provenance:
 Supplied by David Mlinaric

£2,000-3,000



2



3

3Y
A CASED TAXIDERMY EASTERN ROSELLA PARAKEET
MODERN
In a gilt-lined bow fronted case
34cm high, 33cm wide

£200-300

4
A PAIR OF PRINCESS MARGARET'S BROWN LEATHER RIDING BOOTS
BY MAXWELL OF LONDON, 20TH CENTURY
The blocks stamped 'H.R.H. PRINCESS MARGARET' (one stamped 'PINCESS')

Together with a Maxwell Pigskin case with boot pulls etc, and a Swaine and Brigg pigskin case with boot pulls etc
And a collection of riding crops including a bone handled hunting crop

Provenance:
The Collection of H.R.H. The Princess Margaret (1930-2002),
Kensington Palace

£300-500

5
A MODERN RUG
With rows of beige leaves on a green ground
Approximately 331cm x 182cm

Provenance:
Supplied by David Mlinaric

£400-600



4



6
A CONTINENTAL TOLE PEINT AND
GLAZED LANTERN WITH HEAT CHIMNEY
19TH CENTURY
Later fitted for electricity (now needs rewiring)
58cm high

Together with a patinated black metal square
section hanging lantern, fitted for electricity,
55cm high

£400-600

7
CONTINENTAL SCHOOL
(LATE 19TH CENTURY)
LANDSCAPE CARTOON
WITH PAINTED FLORAL BORDER
Oil on canvas
Possibly a tapestry design
195cm x 294cm

Re-stretched

£500-800



6

7





8
 A GROUP OF NINETEEN ROE
 BUCK ANTLERS SET ON A
 VARIETY OF CARVED AND
 TURNED BACK PLATES
 19TH/20TH CENTURY
 Approximately 23cm high

Provenance:
 Supplied by David Mlinaric

£300-500

9
 A CHINESE PORCELAIN
 COVERED BOWL
 20TH CENTURY
 Decorated in *Famille Rose* enamels
 with flowers and a crane in a fenced
 garden, the based inscribed with an
 apocryphal Yongzheng mark
 14cm high

£100-150



9

10
 AN OAK CIRCULAR TABLE
 PROBABLY FRENCH, MID 19TH CENTURY
 On four shaped turned legs with brass covered concave sided base
 74cm high, 60cm diameter

Provenance:
 Supplied by David Mlinaric

£200-300



8



10



11

11
C. HOOG (20TH CENTURY)
MOUNTAIN VALLEY LANDSCAPE
Oil on canvas
Signed and dated 1947 (lower right)
66 x 83.5cm (25 x 32¾ in.)

£400-600



12 λ
EUAN UGLOW (BRITISH 1932-2000)
STILTON
Etching
Signed in pencil and numbered 11/15
Plate 12.5 x 10cm (4¾ x 3¾ in.)

Provenance:
Browse & Darby, London (with dedication verso)

£100-150



12

13
A BIRD'S EYE MAPLE WALL MIRROR
19TH CENTURY
79.5cm high, 66.5cm wide

£200-400



13

14
A BAMBOO BENCH IN THE CHINOISERIE TASTE
CIRCA 1900
With a mat seat and angled brackets and undershelf
56cm high, 100cm wide, 30cm deep

£200-400



14





15
A PATINATED METAL HANGING CEILING LIGHT
 BY FELDMAN LIGHTING COMPANY,
 SECOND HALF 20TH CENTURY
 With six artichoke or lotus shaped shades hanging from a circular ceiling plates, label fragment to top approximately 85cm high

£1,000-1,500

15

16
A PINK UPHOLSTERED THREE SEAT SOFA
 MODERN, IN HOWARD AND SONS STYLE
 83cm high, 225cm wide, 95cm deep

Together with a pair of printed cotton square cushions, 52cm square

Provenance:
 Supplied by David Mlinaric

£500-700



16

18
A LEATHER FIRE BUCKET
 19TH CENTURY
 With a crowned garter ribbon and monogram ALAG, as well as two carrying handles
 35cm high, 35cm diameter

Together with a rectangular wicker log basket with two carrying handles, 52cm wide, 54cm deep

Provenance:
 Supplied by David Mlinaric

£250-350



18

19
A GROUP OF THREE CUSHIONS
 MODERN
 To include a verdure tapestry fragment example, 52cm square as well as two cushions made from strips of needlework fabric, the smaller 65cm long, 44cm wide; the larger 57cm square

£80-120



19

17



17
A BAKSHAISH CARPET
 20TH CENTURY
 With central floral medallion and scrolling flowers on a blue ground with a red ground border
 approximately 428cm x 333cm

Provenance:
 Supplied by David Mlinaric

£2,000-3,000

20
A PAIR OF BANQUETTE SIDE CHAIRS
 LATE 19TH CENTURY
 Later upholstered in paisley fabric
 69cm high, 51cm wide

Provenance:
 Supplied by David Mlinaric

£300-500



20



21
 A PAIR OF COLUMNAR BRASS AND OPAQUE GLASS OIL LAMP BASES
 LATE 19TH CENTURY AND LATER
 Converted for electricity, with paper lamp shades
 58cm high, incl fitting; 75cm high, 30.5cm wide overall

£300-500



22
 A TAN LEATHER PHOTO FRAME
 WITH SWAN NECK PEDIMENT
 BY LINLEY
 The strut is stamped 'LINLEY'
 to take 24.5cm high, 20cm wide; 41.5cm high,
 29.5cm wide overall

£100-150



23
 A PAIR OF GEORGE III MAHOGANY
 D-END TABLES
 CIRCA 1800 - 1820
 With box strung friezes, square tapering legs
 73cm high, 121cm wide, 62cm deep

Together with one additional leaf
 for conversion into a dining table, 121cm wide, 64cm deep

£300-500



24

24

A GEORGE II WALNUT SIDE CHAIR

With drop in seat and vase shaped splat on cabriole legs and turn stretchers
98cm high, 54cm wide

Provenance:

Supplied by David Mlinaric

£100-200

25

A PAIR OF PETRIFIED 'TRUNK' CROSS SECTION OCCASIONAL TABLES

44cm and 34 cm high respectively

Provenance:

Ciancimino

Supplied by David Mlinaric

£500-700



25



26

26

**AN OAK BENCH TABLE IN THE REGENCY STYLE
20TH CENTURY**

After the Manner of Marsh and Tatham, with roundels
to the sides and sabre legs
40cm high, 122cm wide, 48cm deep

£300-500

27 λ

**ATTRIBUTED TO ROBERT TOD GOW
PATERSON (BRITISH 1866-1955)**

PROVOST JAMES MOFFAT OF FORFAR

Oil on canvas

Inscribed to canvas overlap (verso)

51 x 30.5cm (20 x 12 in.)

£200-400



27

28

**GEORGE WILLIAM HORLOR
(BRITISH 1823-1895)**

THE FOLD

Oil on canvas

31 x 41cm (12 x 16 in.)

Exhibited:

London, British Institution, 1858

£600-800



28



29
A PAIR OF SPALTED BEECH BARLEY
TWIST CANDLESTICKS BY LINLEY
With plated drip pans, tamped 'LINLEY'
on the bases
39cm high

£250-350

30 λ
EMILY PATRICK (BRITISH B. 1959)
JUG, CUP AND RED CARNATION
Oil on panel
Signed with initials (lower centre);
artist's label (attached verso)
18.5 x 28.5cm (7¼ x 11 in.)

£300-500



30



29

31



31
A CREAM PAINTED OVERMANTEL
MIRROR IN THE REGENCY STYLE
19TH CENTURY
Painted in distressed cream
109cm high, 140.5cm wide

£400-600



32 λ
 NIC FIDDIAN-GREEN (BRITISH B. 1963)
 MAQUETTE FOR STILL WATER
 Bronze, set on an oak base
 20cm high, 40cm high overall including base
 £7,000-10,000





34 (actual size)

34
 SIR DAVID WILKIE (BRITISH 1785-1841)
 STUDY FOR PRINCE AUGUSTUS FREDERICK,
 THE 8TH DUKE OF SUSSEX
 Pen and ink on paper
 4 x 2.7cm (1½ x 1 in.)

Provenance:
 Sale, Sotheby's New York, Property from the Collection of
 Charles Ryskamp, 25 January 2011, lot 140
 Richard L. Feigen & Co., New York
 Fine Art Society, London

The present lot is a preliminary sketch for the oil painting now in
 the Royal Collection. (RCIN405420). The painting is currently
 hanging on the grand staircase at Buckingham Palace. This
 version presented to Queen Victoria by the sitter.

£500-800

35
 A GEORGE III STYLE MAHOGANY ARMCHAIR
 With carved crest rail, pierced interlaced splat and scroll arms
 98cm high, 61cm wide, 52cm deep

£100-150



33

33
 A BLACK CAST RESIN 'BEANPOLE'
 TABLE LAMP
 BY MARIANNA KENNEDY, MODERN
 With a silk ikat pattern pleated shade
 64cm incl. fitting, 76cm high,
 36cm wide overall

£100-200



35



36

36
A BRASS AND MAHOGANY
ADJUSTABLE READING LAMP
MODERN
With single tier mid-section
148cm high incl. fitting;
164cm high overall

Provenance:
Supplied by David Mlinaric

£300-500



37

37A
ANNETTE LYNTON MASON (BRITISH, B. 1953)
ASIAN RHINO
Bronze
Signed to cast A Lynton Mason,
set on polished black marble base
Overall 27cm high, 47cm long

Annette 'Nettie' Lynton Mason is an actress and producer, married to Nick Mason CBE, drummer and founder member of Pink Floyd. They support various charities including the Wiltshire Air Ambulance and the Wiltshire Bobby Van Trust. It is possible that this animalier bronze was made to raise money for Rhino Rescue whilst she studied under Mark Coreth at the Cowdray Masterclass in 2004.

£800-1,200



39

39
EDWARD LEAR (BRITISH 1812-1888)
THE VIA APPIA IN THE ROMAN CAMPAGNA
Watercolour heightened with white
Signed with monogram, titled and dated 1838 (lower left)
10 x 20cm (3¾ x 7¾ in.)

Provenance:
Thomas Agnew and Sons Ltd., London (no. 46917)
Agnew's Gallery, London (CM10286)

£2,000-3,000



38

38
A COMPOSITE UZBEK SUZANI
LATE 19TH/EARLY 20TH CENTURY
With a panel of flowers within a decorative border,
backed with a red cotton fabric
188cm long, 110cm wide approximately

Provenance:
Supplied by David Mlinaric

£500-800



40

40
A SET OF SIX TUMBLERS
BY LAGUNA, MURANO
With swirling pattern and flowerheads
9cm high

£200-300

41
A WALNUT AND BURR WALNUT BUTLER'S TRAY ON STAND
BY LINLEY

With stamp on stand reading 'LINLEY', the top quarter veneered,
the stand with turned supports

80cm high, 60cm wide, 42cm deep

£300-500

42Y
A WALNUT AND PARQUETRY BACKGAMMON SET
BY LINLEY

With a green and brown leather interior and matching
dice cups and counters, unstamped

closed dimensions, 65cm long, 41.5cm wide, 8cm deep

£600-800



41



42

43
AN OAK TABLE LAMP IN THE FORM OF A CORINTHIAN COLUMN
MODERN

With gilt metal capital and plinth base
69cm high incl. fitting

£200-300

44
TWO LARGE 'BELLES RIVES' LACQUER DRINKS TRAYS
BY RITA KONIG FOR THE LACQUER COMPANY

One in Bordeaux red and the other in grey
10cm high, 58cm long, 42cm wide

£100-200



44



43



45

45
A MOROCCAN PAINTED OCTAGONAL OCCASIONAL TABLE
20TH CENTURY

With flowers and interlaced designs on a red ground
53cm high, 37cm wide

£200-300



46
A CHINESE SANCAI GLAZED MODEL OF A
SEDAN CHAIR AND ATTENDANT FIGURES
MING DYNASTY
52cm high, the figures 29cm high

£1,000-1,500

47
A CHINESE ARCHAISTIC BRONZE
RECTANGULAR CENSER
LATE QING DYNASTY

Raised on four scroll feet, the handles shaped as
taotie masks, the whole covered in verdigris
15cm long, 7.7cm wide

£200-300



47



48

48
A CHINESE ZITAN CASED DUAN INK STONE
QING DYNASTY
The shaped stone with a stylised *chilong* dragon
in a fitted *zitan* hardwood box
14cm long, 9.5cm wide

£2,000-4,000



49

49
A CHINESE HONGMU CORNER LEG TABLE
19TH CENTURY
The apron with pierced scroll ends
86cm high, 159cm wide, 63cm deep

£400-600



50

50 λ
GUY RODDON (BRITISH 1919-2006)
INTERIOR VIEW, WEST INDIES
Watercolour
Signed (lower right)
47.5 x 61cm (18½ x 24 in.)

£100-200



51

51
A LOUIS XV STYLE BEECH FRAMED FAUTEUIL
19TH CENTURY
Covered in floral needlepoint upholstery
100cm high, 64cm wide

£400-600

52
A KILIM RUG WITH PINK GROUND
CONTEMPORARY
With decorative borders in various shades and an orange fringe
225cm long, 138cm wide approximately

Provenance:
Supplied by David Mlinaric

£300-500





53

54

53
A FOLDING TRIPTYCH FIRE SCREEN
BY ROBERT KIME
With bell shaped feet and arched handle
92cm high, 115cm wide overall

£400-600

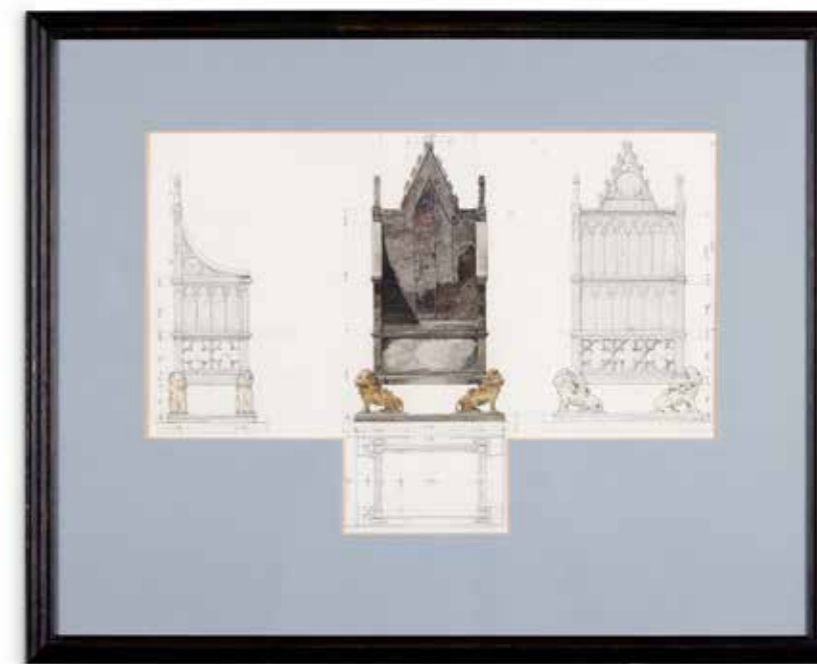
54
A CREAM, RED AND BLUE CARPET
DESIGNED BY HUGH HENRY FOR
DAVID MLINARIC
With a blue and pink striped border containing pink
spots around a central trailing pink spotted design
388cm x 294cm

£1,200-1,800

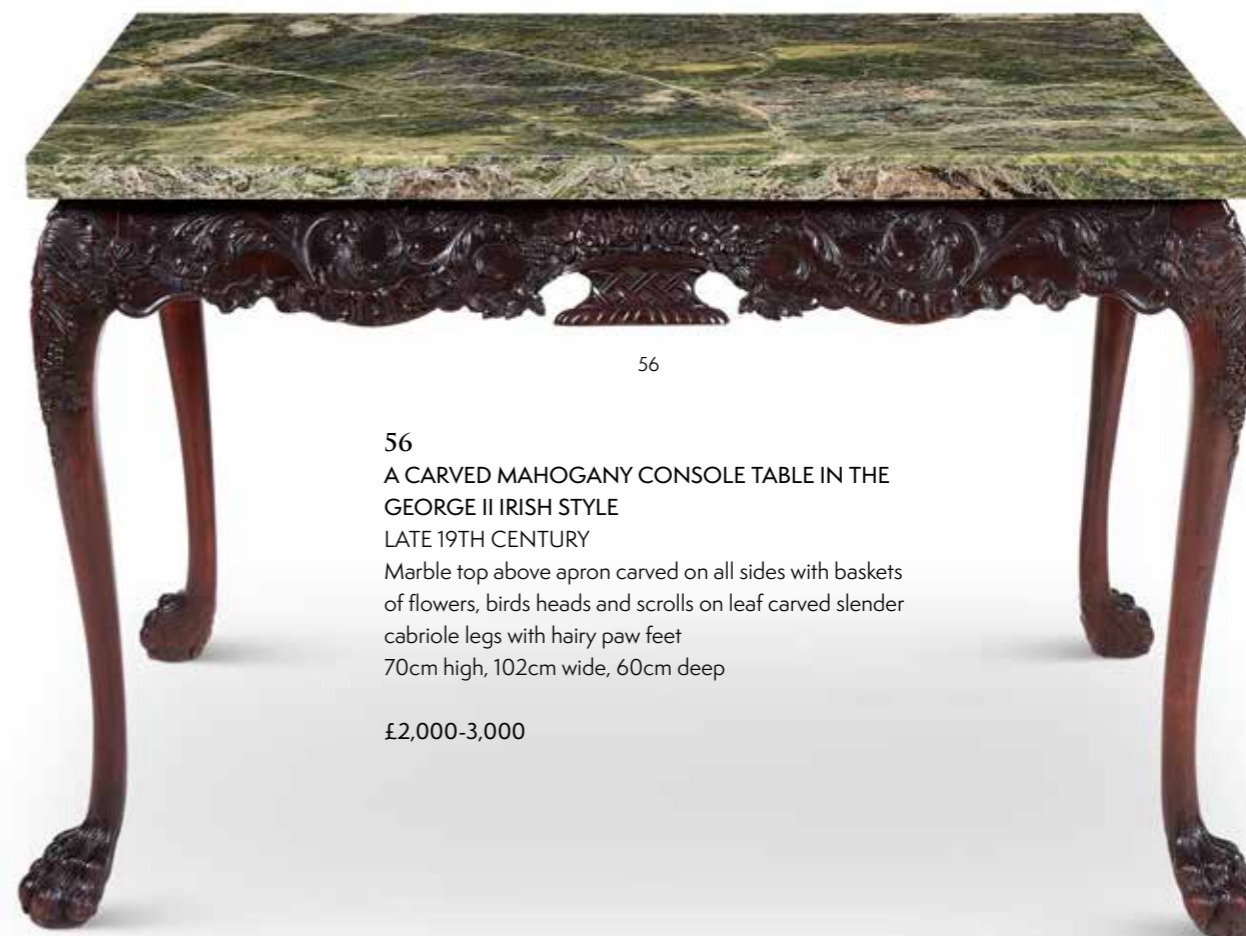


55
AUGUSTE GAGEY
(FRENCH 1856-1936)
*STUDY FOR ST EDWARD'S CHAIR,
THE CORONATION CHAIR,
WESTMINSTER ABBEY*
Watercolour and pencil
30 x 42.5cm (11¾ x 16½ in.)
with irregular mount

£100-150



55



56

56
A CARVED MAHOGANY CONSOLE TABLE IN THE
GEORGE II IRISH STYLE
LATE 19TH CENTURY
Marble top above apron carved on all sides with baskets
of flowers, birds heads and scrolls on leaf carved slender
cabriole legs with hairy paw feet
70cm high, 102cm wide, 60cm deep

£2,000-3,000



57



57
A PAIR OF WHITE PAINTED
MARGINAL WALL MIRRORS
CONTEMPORARY
With shaped Adam style frames
Each 101cm high, 71cm wide

Provenance:
Supplied by David Mlinaric

£1,000-1,500

58
A TWO SEAT SOFA
MODERN, IN THE HOWARD AND
SONS STYLE
Upholstered in beige and cream
patterned fabric with two seat and two
back cushions, fire label
83cm high, 172cm wide, 101cm deep

£1,000-1,500



58



59

59
EUSTACE PAUL ZIEGLER (AMERICAN 1881-1969)
FOUR MOUNTAIN LANDSCAPES, INCLUDING LES HAUTES ALPES
Watercolours
All signed
Each 8.5 x 13.5cm (3¼ x 5¼ in.) (4)

£500-700

60
NIKOLAI SVERCHKOV (RUSSIAN 1817-1898)
TROIKA
Pencil and chalk
Signed with monogram and dated 1856 (lower right)
9.5 x 14.5cm (3½ x 5½ in.)

Provenance:
Sale, Christie's, London, *Russian Art*, 29 November 2010,
lot 4

£1,000-1,500



60



61

61
RIK WOUTERS (BELGIAN 1882-1916)
RUE D'AMSTERDAM
Charcoal
18.5 x 26cm (7¼ x 10 in.)

Provenance:
Gifted by King & Queen of Belgium to H. R. H. Princess Margaret on their visit to London in May 1963

£4,000-6,000



62



62
A PAIR OF BURR WOOD CUSHION
MOULDED PHOTO FRAMES
BY LINLEY
Stamped
to fit 25cm long, 20cm wide;
the frame 34.5cm long,
29.5cm wide overall

£200-300



63



63
A GEORGE III CROSSBANDED AND INLAID
MAHOGANY DEMI-LUNE SIDE TABLE
CIRCA 1780- 1800
The top with a vase of flowers in marquetrie, the
apron with marquetrie swags and a chequer line,
tapering legs with line inlay
89cm high, 135cm wide, 54cm deep

Provenance:
With old paper label stating 'Property of Elizabeth
Jane Fellowes'

£600-800

64
A PATINATED METAL STANDARD LAMP
MODERN, IN THE MANNER OF
GIACOMETTI
In the form of a slender tree trunk
141cm high incl fitting; 162cm high overall

£200-400



65

65
SERGEI CHEKHONIN (RUSSIAN 1878-1936)
LES TULIPES
Gouache
Signed and dated 1928 (lower right)
9.8 x 12cm (3¾ x 4½ in.)

Provenance:
Sale, Christie's, London, *Russian Art*, 6 June 2016, lot 17

£5,000-7,000



66
 WILLIAM ALDRIDGE (19TH CENTURY)
 DEER ALARMED
 Ink on paper
 Signed, titled and dated 28/5/69 (to lower edge);
 dedicated to H.J. Parsons (to right edge)
 11.3 x 13cm (4¼ x 5 in.)

£100-150



66



67

67
 A WALNUT DOOR STOP IN THE FORM OF A BRICK
 BY LINLEY
 2016
 With a white metal plaque inscribed 'LINLEY J50,
 12TH NOVEMBER 2016'
 2.5cm long, 10cm wide, 6.5cm deep

£200-400



68

68Y
 A LATE VICTORIAN ROSEWOOD WRITING TABLE
 LATE 19TH CENTURY
 With a dark blue and leather inset top, two frieze
 drawers, turned legs and stretchers
 72cm high, 122cm wide, 63cm deep

Provenance:
 Supplied by Robert Kime

£500-700



69

69
A METAL OCCASIONAL
TABLE
MODERN
On tripod legs
58cm high, 40cm wide

£150-250

70
A VICTORIAN WALNUT AND UPHOLSTERED ARMCHAIR
LATE 19TH CENTURY
Upholstered in Indian style fabric with matching
cushion on turned legs
88cm high,
72cm wide

£300-500



70

71
A CREAM, RED AND GREEN FLORAL CARPET
DESIGNED BY HUGH HENRY FOR DAVID
MLINARIC With a border of leaves around a
trailing pink and dotted design
295cm x 291cm

£800-1,200

71





72
**A PAIR OF FRENCH GILT METAL TWO
 BRANCH WALL LIGHTS**
 20TH CENTURY
 With two cornucopia 'hung' from tied ribbons,
 both variously stamped to reverse 149 BIS, HA
 CA, bulb shades
 66cm high, 30cm wide, 17cm protuberance

Provenance:
 Christopher Butterworth Antiques Ltd
 Supplied by David Mlinaric

£200-300

73 λ
SIR EDUARDO PAOLOZZI
 (BRITISH 1924-2005)
FROG
 Plaster
 8 x 13 x 11cm (3 1/4 x 5 x 4 1/4 in)



73

£100-150



74
**A PAIR OF CREAM
 UPHOLSTERED
 BERGERES IN LOUIS
 XV STYLE**
 LATE 19TH CENTURY
 With shaped hooped
 back, scroll arms and
 cabriole legs
 95cm high, 68cm wide

Together with a pair of
 Aubusson cushions
 37cm wide, 47cm long

£400-600

74



75

75
AFTER BALTHAZAR SOLVYIN (1760-1824)
**A SET OF SIX HAND COLOURED BOOK PLATES FROM 'THE MANNERS,
 CUSTOMS AND DRESSES OF THE HINDOOS', PUBLISHED IN CALCUTTA
 1796-179, framed as one, together with another set of six from the same series**
 Each book plate numbered and titled in ink
 Each plate 44x26cm, overall inc. frame 103 x 101.5cm (2)

Provenance:
 Ramsay Ltd, London

£1,000-1,500



76
RICHARD EARLOM (BRITISH 1743-1822)
AFTER CLAUDE LORRAIN, FROM THE ORIGINAL DRAWING IN THE COLLECTION OF THE DUKE OF DEVONSHIRE
 Engraving
 Published in 1774 by John Boydell, London
 20.5 x 25cm (8 x 9¾ in.)

Together with two engravings by another hand, both indistinctly signed, various sizes (3)

£100-150



76



77

77
AFTER ROBERT PARR
VUE DE PARIS, THE SEINE LOOKING FROM POINT NEUF TOWARDS PONT ROYAL
 Hand coloured punch through engraving
 Published by John Boydell, London, circa. 1760
 22 x 41.5cm (8½ x 16¼ in.)

£100-150



78

78
A SET OF THREE ENGRAVED CUT GLASS BOTTLES
BY SAMANTHA SWEET
 19cm high

Together with a pair of glass bottles by Annette Meech
 20cm high

And a cut glass decanter in the shape of a pilgrim glass
 25cm high

Provenance:
 The Set of Three; Dreweatts, Fine Jewellery, Silver, Watches and Luxury Accessories to include Property from the Collection of Victoria, Lady de Rothschild, 8-9 March 2022, lot 292

£200-400

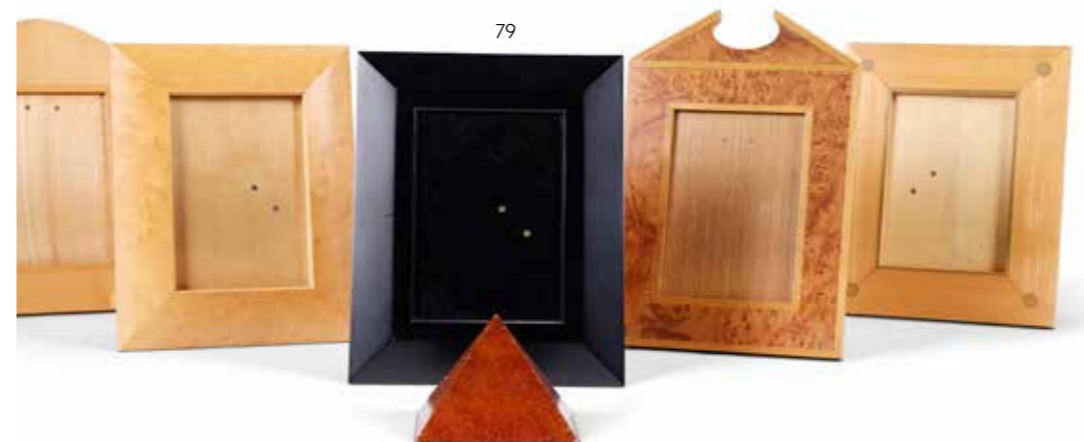
79
A GROUP OF FIVE PHOTO FRAMES
BY LINLEY
 Assorted shapes and styles, the frames are all stamped 'LINLEY', one stamped 'DAVID LINLEY 1993' all to take 17cm high, 12cm wide; the largest overall, 30.5cm high, 20.5cm wide

Together with a small modern burrwood pyramid
 9cm high, 11cm diameter

£200-300

80
A PAISLEY SHAWL
POSSIBLY 20TH CENTURY
 A central white panel on an intricate red patterned ground
 Approximately 170cm x 330cm

£200-400



79



80



81

81
A COMPOSITE SET OF 12 WINE GLASSES
 MODERN
 With knopped stems and some with engraved marks to base
 13.5cm high

£100-150

82
A MAHOGANY CONCENTRIC EXTENDING DINING TABLE IN THE MANNER OF JUPE
 20TH CENTURY INCORPORATING LATE GEORGE III ELEMENTS
 On single turned support and four splayed legs, with six leaves to extend from 141cm to 174cm
 70cm high, 141cm diameter

£600-800



82

83
A SPODE 'MARLBOROUGH SPRAYS' PART DINNER AND TEA SERVICE
 20TH/21ST CENTURY
 Comprising of 5 teapots and covers, 2 large milkjugs, 2 small milk jugs, one sugar basin and cover, 12 teacups, 22 breakfast cups, 11 saucers in sizes, 3 small bowls, 7 plates (27cm), 16 plates (19.5cm), 6 plates (22cm), 12 plates (17cm), 22 soup plates, 8 two handled soup bowls, one sauce boat and stand, 4 egg cups, 4 canted meat dishes (42cm long) 6 canted meat dishes (36.5cm long). Printed marks, each piece printed in colours.

£500-700



83

84
A PAIR OF GLASS AND PATINATED METAL BELL JAR STORM LANTERNS
 MODERN
 38cm high, 24cm diameter

£200-300



84



85

85
A PROVINCIAL FRENCH FRUITWOOD SIDE TABLE
 19TH CENTURY AND LATER
 74cm high, 85cm wide, 63cm deep

£300-500

86
A PAIR OF LOUIS XV SIDE CHAIRS BY PIERRE FALCONET
 CIRCA 1750-1760
 With caned backs and seats, painted in distressed grey and dark leather squab shaped squab cushions, each stamped to back rail
 87cm high, 47cm wide

The same "FALCONET" stamp was used by two Paris menuisiers in the 18th century: Pierre Falconet (b. 1683) and his son Louis Falconet (master 1743, d. ca. 1775). From the style of these chairs they are almost certainly made by the son.

£400-800



86



87



87
A PAIR OF EDWARDIAN SILVER
DOG PEPPERETTES
WILLIAM EDWARD HURCOMB,
LONDON 1907
Standing four square
7cm (2 3/4in) long
126g (4.05 oz)

£300-500

88
AN ITALIAN SILVER COLOURED
LEAF SHAPED DISH
BUCCELLATI, BOLOGNA POST
1968 .925 STANDARD
33cm (13in) long
368g (11.8 oz)

£150-250



88



89



89
A PAIR OF GERMAN SILVER COLOURED
OWL PEPPERETTES
STAMPED GERMANY, .800 STANDARD
10.5cm (4in) high
344g (11.05 oz)

£200-300



90



90
A PAIR OF MARTINI GLASSES
THEO FENNEL, BIRMINGHAM 1989
With silver columnar stem and base
15cm high

Together with a Georgian style rummer
15.5cm high

£60-80

91

A PAIR OF SILVER AND SILVER-GILT MOUNTED HUNTING BOOT
SALT AND PEPPER SHAKERS
THEO FENNEL, LONDON 1996
8cm (3 1/4in) high
332g (10.7 oz)

£250-350



91

92

A COMPOSITE LUNEVILLE PART DINNER AND BREAKFAST
SERVICE PRINTED AND PAINTED WITH FLORAL SPRAYS
20TH CENTURY, VARIOUS DATES
Comprising of soup tureens and covers and a large quantity of plates,
dishes, teacups and jugs. Approximately 300 pieces. With various printed
marks and various dates.

£500-700



92



93

93
A SET OF FOUR FRENCH PAINTED OPEN
ARMCHAIRS IN THE LOUIS XV MANNER
19TH CENTURY
The oval backs with carved rose crest, scroll
arms and fluted legs, all painted grey and with
Indian printed blue and grey fabric
89cm high, 58cm wide

£1,000-1,500

94
A TRANSITIONAL STYLE FRENCH CANAPE
LATE 19TH CENTURY
The frames now painted pale grey and upholstered in toile fabric
93cm high, 140cm wide

Together with a pair of matching side chairs, similarly decorated and upholstered,
92cm high, 50cm wide

Provenance:
Supplied by David Mlinaric

£1,200-1,800



94

95
A RECTANGULAR MULTIPLATE MIRROR
19TH CENTURY
Central rectangular plate within frame inset with marginal plates
68cm high, 51cm wide

£100-150



95



96

96
A FRENCH MAHOGANY CIRCULAR TABLE
CIRCA 1900
With bianco nero marble top, a pierced brass gallery, two
short drawers and two writing slides on fluted tapered legs
78cm high, 65cm diameter

Provenance:
Supplied by David Mlinaric

£200-300

97

97
A LILAC GROUND 'RAG' RUG
MODERN, BY SHYAM AHUJA, INDIA
Approximately 325 x 384cm

£400-600





98
 A PAIR OF CRACKLE GLASS BALUSTER TABLE LAMPS
 SECOND HALF 20TH CENTURY
 With brass base and internal stem, and buff paper shades
 44cm high to fitting; 70cm high, 40.5cm wide, incl lampshade

£200-400

99
 A GROUP OF GREEN PORTUGUESE CABBAGE TUREENS
 MODERN
 The largest: 20cm high, 33cm diameter; the smallest pair, 15.5cm diameter

Together with another white cabbage tureen
 Made for Daylesford
 40cm diameter

£200-400

100
 AN OAK REFECTORY TABLE IN THE 18TH CENTURY STYLE
 PROBABLY INCORPORATING SOME PERIOD ELEMENTS
 The cleated five plank top on base with square legs and H-stretcher
 76cm high, 220cm long, 99.5cm wide

£600-800



98



99



100



101



101
A GROUP OF FOUR
NORTH AFRICAN SHEET
BRASS AND GLAZED
HEXAGONAL SECTION
LANTERNS
MODERN
Candle lanterns
approximately 82cm high

£800-1,200

104
A PAIR OF MOULDED COMPOSITION STONE BALUSTER LAMP BASES
MODERN
The bodies with comb swirl pattern, continental fitting and plug
57cm high incl. continental fitting

Provenance:
Supplied by David Mlinaric

£300-500



104



102
THREE BOTTLES OF WHITE WINE FROM
KENSINGTON PALACE
Potentially dry Riesling from the Rhine, Germany
A Curiosity
1976
Bottled in the Silver Jubilee Year. Levels are varying.

Provenance:
Label suggests that the wine was bottled for
HRH Princess Margaret

£30-60



102



105

105
A PAIR OF WICKER ARMCHAIRS
MODERN
With hooped backs and each with two
cushions
80cm high, 74cm wide

Together with a rustic occasional table on
tripod legs, 46cm high

£200-400

106
A SKY BLUE GROUND 'RAG' RUG
MODERN, BY SHYAM AHUJA, INDIA
Approximately 310cm x 530cm

Provenance:
Supplied by David Mlinaric

£400-600



106



103

103
A SET OF EIGHT FRENCH RUSTIC
BENTWOOD ARMCHAIRS
MODERN
With cream and red check squab cushions
and hooped design back and arms
92cm high, 59cm wide approximately

Provenance:
Purchased from Axel Vervoordt

£500-1,000



107

107
 A GROUP OF EIGHT FRENCH
 POTTERY CONFIT POTS
 19TH CENTURY
 The top half lead glazed in ochre
 33cm high and smaller
 £300-500



108

108
 A WROUGHT IRON AND MARBLE
 CAFE TABLE
 MID 20TH CENTURY
 With brass edge and grey marble top
 on white painted metal stand
 78cm high, 51cm diameter
 £300-500



109

109
 A KILIM COVERED COFFER
 20TH CENTURY AND LATER
 29cm high, 72cm wide, 36cm deep

Together with a large kilim cushion, 61cm x 65cm

£300-500

110
 A GROUP OF FOUR WICKER ANIMAL HEADS
 MODERN
 Woven rush and sisal, some with dye and comprising
 one donkey, one cow, one goat and another animal
 largest 63cm high overall

£250-350



110





111

111
AFTER DAVID ROBERTS
RUINS CALLED OM EL HAMED NEAR TYRE
Hand-coloured lithograph
23 x 32cm (9 x 12½ in.)

£100-150

112
A MAHOGANY OPEN ARMCHAIR IN THE MID 18TH CENTURY STYLE
20TH CENTURY
With floral paterae to the arms, the leaf carved scroll legs with claw and ball feet,
later cream upholstery. back leg stamped 7394
96cm high, 63cm wide

£200-400



112

113
A KILIM RUG
MODERN
With seven bands of decoration within a zig-zag border
Approximately 222cm long, 151cm wide

£250-350



113





114
 A SET OF FOUR PRINTS FROM CASSELL'S
 POULTRY BOOK
 BY LEWIS WRIGHT
 Published by Vincent Brooks Day & Son
 Coloured lithographs
 24 x 18.5cm (9¼ x 7¼ in.) (4)

£300-500



115

115
 AN EDWARDIAN SILVER SHAPED
 CIRCULAR WAITER
 FENTON BROTHERS LTD., SHEFFIELD 1908
 With a leaf and scroll border, and on three
 scroll feet
 25.5cm (10in) diameter
 573g (18.45 oz)

£200-300



116

116
 A FRENCH PAINTED PINE COMMODE
 LATE 19TH CENTURY
 The cream ground with shaped panels of faux
 grain, three drawers
 85cm high, 94cm wide, 47cm deep

£400-600

117
 A MATCHED PAIR OF FRENCH
 WALNUT FAUTEUILS
 19TH CENTURY
 In green flower head needlework
 upholstery
 87cm high, 57cm wide

Together with a Victorian walnut low
 chair, with rail back and button seat,
 the rail back with decorative line inlay
 69cm high, 50cm wide; seat height,
 26cm

Provenance:
 The Collection of H.R.H. The Princess
 Margaret (1930-2002), Kensington
 Palace

£300-500



117



118

118
 A FRENCH WALNUT COMMODE
 19TH CENTURY
 With grey marble top, three drawers flanked by
 fluted stiles and tapering legs
 90cm high, 117cm wide, 57cm deep

£400-600

119
 A FRENCH PATCHWORK BLANKET
 PROBABLY 19TH CENTURY
 In a geometric pattern with embroidered marguerites and red stitching
 within a decorative border. Backed in a grey and white checked pattern
 221cm long, 206cm wide approximately

Provenance:
 Supplied by David Mlinaric

£500-700



119



120

120
A CONTINENTAL ROCCOCO GILTWOOD MIRROR
MID 18TH CENTURY
The shaped plate with C scroll and pendant fruit to the sides, the crest with scrolls and flower heads
122cm high, 64cm wide

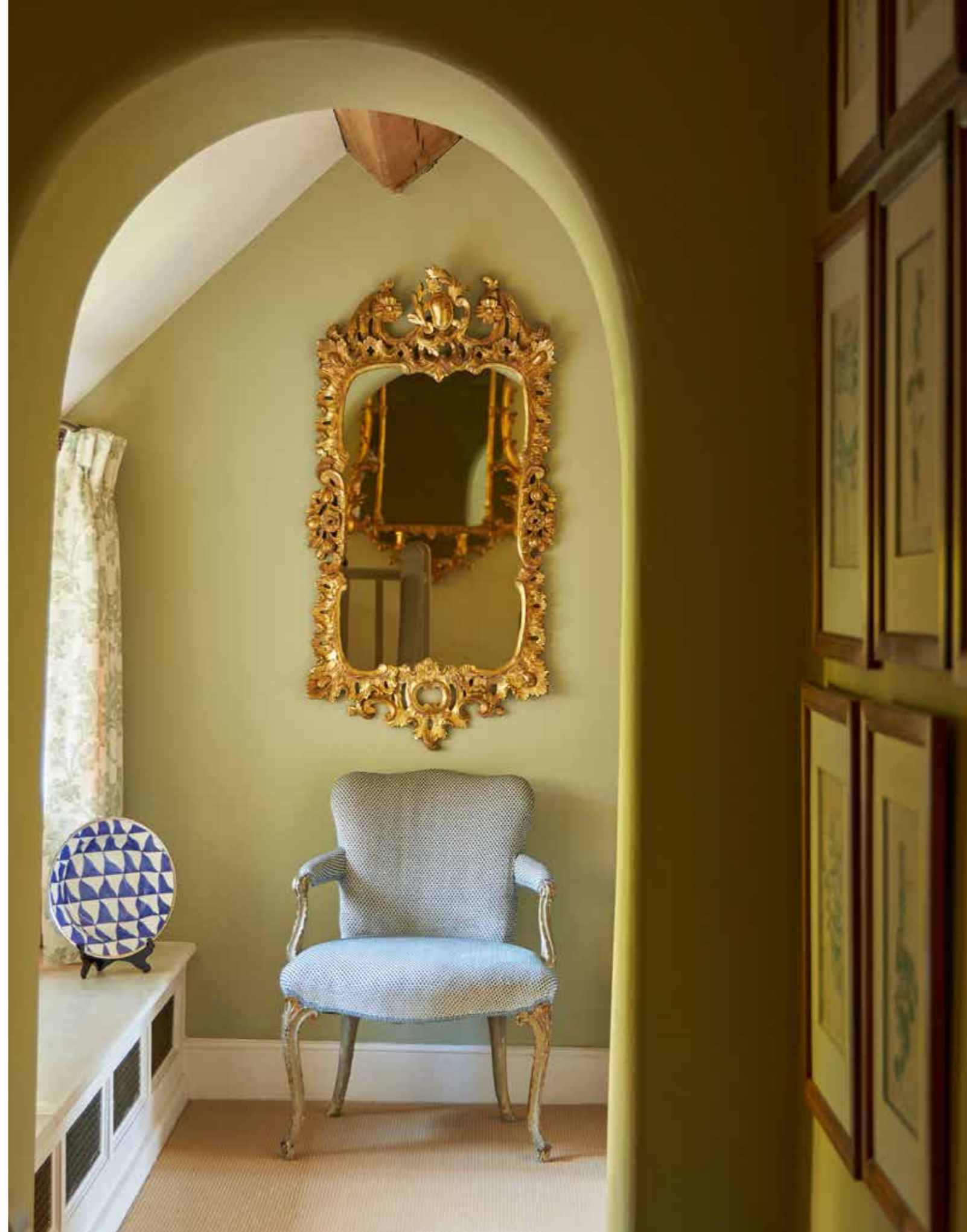
£800-1,200



121

121
A GEORGE III PAINTED AND PARCEL GILT
ARMCHAIR IN THE HEPPLEWHITE MANNER
CIRCA 1770
With scroll arms and legs
85cm high 65cm wide 67cm deep

£600-800





122

122
A SYCAMORE AND BURR WALNUT
BOOK TROUGH
BY LINLEY
21cm high, 51cm wide, 17cm deep

£250-350



124



123

123
A PROVINCIAL FRENCH CHESNUT SIDE CABINET
18TH CENTURY AND LATER ELEMENTS
The two drawers carved in shallow relief with two birds
flanking a stylised sun motif above two doors with scroll
shaped panels, carved stiles
96cm high, 126cm wide, 63cm deep

£200-300

124
A KILIM RUNNER
20TH CENTURY
approximately 268cm x 74cm

£300-500



125

125 λ
DAVID ORD KERR (BRITISH B.1951)
TWO HORNBILLS
Oil on board
Signed (lower right)
119 x 134cm (46¾ x 52¾ in.)

£5,000-7,000



126

126
A GROUP OF 4 GLASS BOTTLES
WITH STOPPERS
19TH CENTURY
18cm high

Together with two bottles with acid
etched labels and stoppers,
20th Century
Approximately 24cm high

£100-150

128



127

127
A PROVINCIAL FRENCH WALNUT
COMMUNE
18TH CENTURY AND LATER
With two long and two short drawers, gilt
metal handles and mounts to the corners and
feet
82cm high, 110cm wide, 54cm deep

Provenance:
Supplied by David Mlinaric

£400-600

128
A BOTTLE GREEN GROUND 'RAG' RUG
MODERN, BY SHYAM AHUJA, INDIA
Approximately 220cm x 440cm

Provenance:
Supplied by David Mlinaric

£400-600

129

A LARGE EARLY GEORGE III GILTWOOD MIRROR
CIRCA 1760

The rectangular plate flanked by shaped marginal plates,
frame with leaf scrolls, shaped stepped cornice and base
168cm high, 97cm wide

£2,000-4,000



129



130
 A GILDED LEATHER FIVE FOLD ROOM SCREEN
 PROBABLY 19TH CENTURY
 With studded panel decoration
 166 cm high, each panel 36cm wide

£400-600

131
 A BEIGE UPHOLSTERED ARMCHAIR
 MODERN, IN THE HOWARD AND SONS STYLE
 With square tapering legs and brass castors,
 fire label
 85cm high, 77cm wide, 97cm deep

Together with a single cushion printed
 with flower heads, 42cm square

Provenance:
 Supplied by David Mlinaric

£300-500





132

132
A CONTINENTAL PORCELAIN OVAL
PIERCED BASKET
20TH CENTURY
Decorated with scattered flowers
29cm wide

Together with a Nymphenburg oval dish
20th Century
22cm wide

And a Lille pottery basket on three feet
20th Century
20cm wide

£50-80



133

133
A FRENCH GREY PAINTED SIDE TABLE
19TH CENTURY
With frieze drawer and white line decoration
on square tapered legs
71cm high, 114cm wide, 75cm deep

£400-600



134

134
A GROUP OF THREE WINDOW SEAT
CUSHIONS
BY ROBERT KIME
With an Indian pattern of scattered
flowers on a cream ground

Together with a pair of curtains to match,
165cm long

£300-500

135

A PAIR OF DRESDEN PAGODA FIGURES
MODERN, IN THE MEISSEN STYLE

The figures seated cross legged in floral decorated
robes, with nodding heads and hands, marks in blue
17cm and 19cm high

£600-800



135



136

136

TWO CANVAS AND LEATHER SUITCASES
BY TANNER KROLLE, LATE 20TH CENTURY
48cm high, 78cm wide, 17cm deep approximately

£300-500

137

A FLATWEAVE FLORAL PATTERNED RUG
CONTEMPORARY

With all over rose bush design
240cm long, 166cm wide approximately

Provenance:
Supplied by David Mlinaric

£400-600



137



139

138
AN OPALESCENT GLASS TABLE LAMP
PROBABLY LATE 20TH CENTURY
With stiff and vine leaves picked out in turquoise and gilt, with a paper lampshade
39cm high, incl. fitting; 51cm high, 26cm wide overall

£300-500



138

139
A GEORGE III MAHOGANY TRAY TOP NIGHT COMMODE
LATE 18TH CENTURY
With tambour and base drawer on square legs
78cm high, 49cm wide, 42cm deep

£200-300

140
A FRENCH WALNUT AND UPHOLSTERED LONG BENCH
PROBABLY 19TH CENTURY
With reeded border and legs
43cm high, 161cm wide, 36cm deep

Provenance:
Supplied by David Mlinaric

£200-300



140



141

141
A WALNUT AND TAPESTRY UPHOLSTERED STOOL IN THE GEORGE II STYLE
20TH CENTURY

With shell carved knees and pad feet
46cm high, 69cm wide, 50cm deep

Provenance:
The Collection of H. R. H. The Princess Margaret (1930-2002), Kensington Palace

£400-600



142
A PAIR OF MEISSEN MODELS OF CHILDREN, GOATS AND GARLANDS OF FLOWERS
 PROBABLY 20TH CENTURY
 On oval bases with scattered flowers, underglaze blue marks and impressed numbers
 15cm high

£600-800



144

144
A KASHAN PART SILK 'TREE OF LIFE' RUG
 20TH CENTURY
 With a central red ground panel within one wide and several decorative borders
 approximately 204cm x 134cm

Provenance:
 Kensington Palace

£400-600

143
AN EARLY GEORGE III SABICU PEMBROKE TABLE
 ATTRIBUTABLE TO HENRY HILL OF MARLBOROUGH, CIRCA 1760
 The top and flaps with distinctive lozenge geometric veneering, frieze drawer and chamfered square legs with blind fret decoration, with paper label inside inscribed 'Pembroke Table Kensington Palace 19667'
 72cm high, 90.5cm wide when open, 57.5cm deep overall

Provenance:
 The Collection of H. R. H. The Princess Margaret (1930-2002), Kensington Palace

Henry Hill is listed as cabinet-maker, auctioneer, coach-maker, and representative of the Sun Insurance Company active in Marlborough from about 1740 until

his death in 1778. Most of Hill's known clients were landed Wiltshire families. A closely related oval Pembroke table at Corsham Court with 'lozenge' pattern top has been attributed by Lucy Wood to the cabinet-maker Henry Hill (L. Wood, *Catalogue of Commodes*, London, 1994, p. 68, fig. 49).

For a Pembroke table with very similar parquetry top to this example please see Christie's London, Julians Park And Six Private Collections, 8th June 2021, lot 32 £5,625 (inc. buyer's premium).

£1,200-1,800



143



145

145 λ
IVAN LACKOVIC (CROATIAN 1932-2004)
JUG OF FLOWERS IN A SURREALIST LANDSCAPE
Mixed media
Signed (lower right); further inscribed and dated HKVPM 1970 (lower left); titled and dedicated to *H.R.H. The Princess Margaret and Lord Snowdon* to artist's labels (verso)
44 x 39cm (17¼ x 15¼ in.)

£300-500



146 (part lot)

146 λ
MARK ADLINGTON (BRITISH B. 1965)
LIONESS
Watercolour, ink and wash
Signed and dated 08 (lower left)
27.5 x 40.5cm (10¾ x 15¾ in.)

Together with Mark Adlington (British B. 1965), *Study of a Wild Dog*, signed with initials and dated 08 (lower right), 27.5 x 40.5cm (10¾ x 15¾ in.) (2)

£300-500



147

147 λ
MATTHEW RICE (BRITISH 20TH/21ST CENTURY)
STUDY OF LILACS AND POPPIES
Watercolour
Signed and dated 2020 (lower right)
76 x 57cm (29¾ x 22¼ in.)

£300-500





148

148
A BRASS TABLE LAMP
MODERN
Cast with a bee near the fitting
35.5cm high, incl. fitting; 45cm high,
23.5cm wide overall

£80-120

149
A MAHOGANY NIGHT COMMODE
19TH CENTURY
With cupboard, tray top and turned legs
85cm high, 41cm wide, 39cm deep

£200-300



149



150

150
A LARGE RED VELVET UPHOSTERED SINGLE
BED IN THE LATE 17TH CENTURY STYLE
EARLY 20TH CENTURY, POSSIBLY BY LENYGON
& MORANT

The headboard with arched scrolls, the foot with
scroll ends, close covered in red velvet and damask,
comprising headboard, footboard, side rails, box
springs and mattress
167cm high, 230cm long, 140cm wide approximately

£300-500



152

152
A VICTORIAN MAHOGANY CHEST OF DRAWERS
MID 19TH CENTURY
With two short and four long graduated drawers,
shaped apron and tapering legs
118cm high, 125cm wide, 55cm deep

Provenance:
The Collection of H.R.H. The Princess Margaret
(1930-2002), Kensington Palace

£250-350



151

151
A VICTORIAN MAHOGANY DRESSING MIRROR
LATE 19TH CENTURY
With arched frame and turn supports
68cm high, 58cm wide

£200-300



153

153
A BLUE DHURRIE CARPET
MODERN
With a knotted fringe
270cm x 212cm

£300-500



154

154
INDIAN SCHOOL (20TH CENTURY)
A REGAL PROCESSION WITH ELEPHANTS
Gouache on paper
24cm x 36cm

£60-80



155

155
A GEORGIAN STYLE TWO DOOR HANGING WARDROBE
20TH CENTURY
With an egg and dart moulding cornice, moulded doors and
base drawer
209cm high, 127cm wide, 56cm deep

Provenance:
The Collection of H. R. H. Princess Margaret (1930-2002),
Kensington Palace

£100-150



156

156
A RUST OBLIQUE RED MIX GROUND 'RAG' RUG
MODERN, BY SHYAM AHUJA, INDIA
Approximately 332 x 506cm

Provenance:
Supplied by David Mlinaric

£400-600



157

157
A REGIMENTAL SCARLET WAISTCOAT WITH GILT BROCADE DECORATION
LATE 19TH/EARLY 20TH CENTURY
Officer's mess vest with closed neck, crowsfeet braid to pockets
55cm high, 45cm wide

£200-400



158

158
A BRASS STUDENT'S LAMP
BY ROBERT KIME
With printed paper shade
56cm high, 50cm wide

£200-300



159

159
A PROVINCIAL LOUIS XV STYLE
FRUITWOOD SIDE TABLE
19TH CENTURY
75cm high, 85cm wide, 60cm deep

£300-500

160



160
A 1930'S TUFTED RUG
With an overall zig-zag pattern
approximately 270cm long, 160cm wide

£40-60



162



161

161 λ
RORY MCEWEN (BRITISH 1932-1982)
ONION
Pencil, watercolour and collage
Signed, inscribed and dated Dec 1970 (to lower edge)
21 x 17cm (8¼ x 6½ in.)

£800-1,200

162
A BOOMERANG CURTAIN
MADE BY MEMBERS OF THE EMBROIDERERS' GUILD OF
NEW SOUTH WALES
Dated 1975
With 54 individual panels by different members of the guild, all
within ribbon borders. With a panel on the reverse containing the
identification of each embroidery and the embroiderer
252cm long, 170cm wide approximately

Provenance:
Commissioned by Lady Cutler, wife of the governor of New
South Wales, Sir Roden Cutler for H.R.H. The Princess Margaret

£800-1,200



163



163 (detail)

163
A STEVENSON BROTHERS GOLDEN
JUBILEE SPECIAL EDITION COACH-
SPRUNG TRESTLE ROCKING HORSE
2006

With dappled grey finish, mane and tail, a leather harness with the Queen's Racing colours, a checked blanket with racing colours around the edge, an embazoned EHR saddle pad and with a hallmarked silver plaque reading 'Limited edition 2006 no. 14/50'

128cm high, 153cm long

£2,000-4,000





164

164
A FRENCH WHITE MARBLE AND GILT METAL MOUNTED PORTICO MANTEL CLOCK
MID 19TH CENTURY
With gilt metal capitals, the white enamel dial within a gilt metal border supporting twin barrel 8 day movement stamped 546, striking on a bell, key and pendulum
41cm high, 24cm wide

£300-500

165
A MODERN ELM AND SUEDE UPHOLSTERED OVERSIZED
ARMCHAIR WITH ACCOMPANYING STOOL
BY SOANE
With upholstered scroll arms, deep seat and
back cushions and short scroll feet
97cm high, 77cm wide, 111cm deep; the stool,
80cm wide, 56cm deep

£700-1,000



165

166
A NORTH WEST PERSIAN
TABRIZ CARPET
20TH CENTURY
With a central blue star
medallion on a red ground
with numerous borders
332cm long, 251cm wide
approximately

Provenance:
Supplied by Robert Kime

£600-1,000



166

167
A FRENCH PAINTED PINE WARDROBE
19TH CENTURY
With cornice above two panelled doors,
base drawer and plinth
Approximately 182cm high, 139cm wide,
55cm deep

£300-500

168
A BLUE GROUND 'RAG' RUG
MODERN, BY SHYAM AHUJA, INDIA
Approximately 330 x 530cm

Provenance:
Supplied by David Mlinaric

£400-600



167



168



169

169
A PAIR OF CLEAR PERSPEX 'SPRING' LAMPS
BY MARIANNA KENNEDY
55cm high incl. fitting, 13cm wide

£200-300



170

170
A SHOEHORN IN THE FORM
OF A STILETTO SHOE
MANOLO BLAHNIK
In cast white metal, with an impressed
mark to the underside reading
'MANOLO BLAHNIK'
18cm high, 28cm long

£50-80

171
A MAHOGANY BEDSIDE COMMODE
19TH CENTURY
With hinged top shelf and rising seat cover
to reveal an enamel chamber pot, on square
tapering legs
73cm high, 56cm wide, 53cm deep

£250-350



171

172
A LIMITED EDITION SHAKER TIN AND WOOD
MODEL OF NOAH'S ARK
MODERN
Signed and dated 2000, no 87/500
To include 17 pairs of animals and one horse and the
figure of Noah
64cm high, 64cm wide, 19cm deep

£400-800



172



173

173
A FRENCH 18TH CENTURY STYLE SETTEE
LATE 19TH OR EARLY 20TH CENTURY
With shaped crest rail, winged sides, upholstered in lilac check material
with alternating stripes, fitted cushion and raised on carved legs with
shell carved apron
105cm high, 149cm wide

Together with two similar square cushions embroidered with scrolling
flowers, one with green gingham back, one with blue gingham back,
both 48cm square

£500-700

174
A GEORGE II WALNUT AND FEATHERBANDED CHEST ON CHEST
CIRCA 1740
The drawers with engraved metalwork within fluted canted angles
115cm wide, 166cm high, 57.5cm deep

£1,000-1,500



174

COMING UP AT DREWEATTS & FORUM AUCTIONS

19 March | Dreweatts

Fine Wine, Champagne, Vintage Port and Spirits

20 March | Dreweatts

Jewellery, Silver, Watches, Pens and Luxury Accessories

26 & 27 March | Dreweatts

Fine Furniture, Sculpture, Carpets, Ceramics and Works of Art

27 March | Forum Auctions

Colour Plate Books from the Library of Norman Bobins (part 2)

28 March | Forum Auctions

Fine Books, Manuscripts and Works on Paper

4 April | Dreweatts

Art Live

9 April | Dreweatts

The Collection of Serena, Countess of Snowdon

10 April | Dreweatts

Interiors

18 April | Dreweatts

Jewellery, Watches and Handbags

23 April | Dreweatts

Fine Wine, Champagne, Vintage Port and Spirits

24 April | Dreweatts

Alchemy of Design:

The Collection of Count Manfredi Della Gherardesca

9 May | Dreweatts

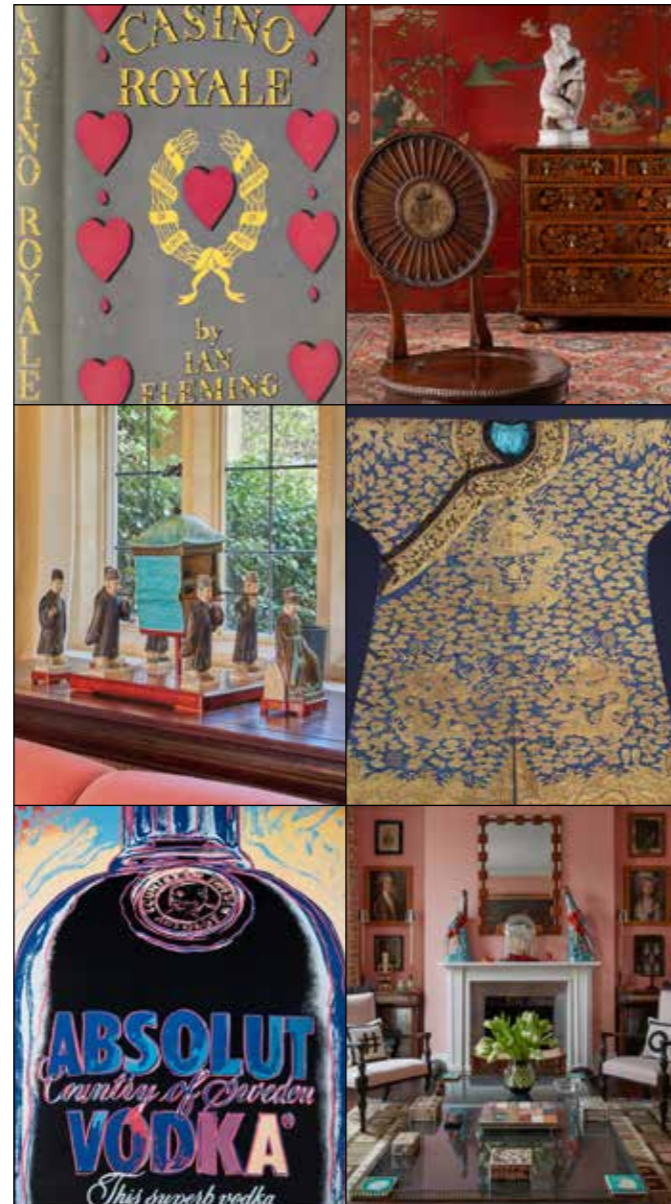
Interiors

14 May | Dreweatts

Single Owner Collection

21 & 22 May | Dreweatts

Chinese Ceramics and Works of Art | to include Japanese, Indian and Islamic Art



NOW INVITING ENTRIES

If you have an item you would like valued for sale at auction, we would be delighted to provide you with a free, no obligation estimate. Contact us to arrange an in-person appointment or visit our website to see how to submit the information online.

DREWEATTS

EST. 1759

dreweatts.com

info@dreweatts.com

NEWBURY

01635 553 553

LONDON

020 7839 8880

forumauctions.co.uk

info@forumauctions.co.uk

LONDON

020 7871 2640

 **Forum
Auctions**

Please see Conditions of Business and Conditions of Sale on the following pages.

Dreweatts & Dreweatts 1759 are trading names of Dreweatts 1759 Ltd. Dreweatts 1759 Ltd is registered in England, company number: 10758982, registered office: C/O Bishop Fleming LLP, 10 Temple Back, Bristol, BS1 6FL.

IMPORTANT NOTICES

BUYING AT DREWEATTS

There are several ways you can bid at a Dreweatts auction; in person, by leaving a commission or absentee bid, on the telephone where available and live via the internet – please make arrangements before the sale. THIS NOTICE APPLIES ONLY TO A PERSON WHO WISHES TO BID IN PERSON, OR BY LEAVING A COMMISSION OR ABSENTEE BID, AT A DREWEATTS PUBLIC AUCTION. For bidding at an online auction or for online bidding at a public auction please see our Online Auction Terms published on our website at www.dreweatts.com.

BIDDING IN PERSON

If intending to buy you are required to register your name and details at reception prior to the commencement of the auction. You will be required to provide a proof of identity and address to register for bidding. You will then be allocated a bidding number, which you use when bidding for an item.

COMMISSION BIDS

Dreweatts will execute bids on your behalf if you are unable to attend the sale. Commission or absentee bids are accepted either directly at reception, or can be sent by post, fax, email, telephone or via the website: www.dreweatts.com.

Dreweatts will add these bids to the auctioneers' sale book and will undertake to purchase the lots on your behalf as cheaply as allowed by other bids and reserves. If two buyers submit identical commission bids Dreweatts may prefer the first bid received.

Dreweatts does not accept liability for failing to execute commission bids, or for any errors or omissions.

CONDITION

Bidders must satisfy themselves as to the condition of each lot. Condition reports are available on request – see the Conditions of Business at the back of this catalogue forming part of these Auction Terms and Conditions for more information regarding condition reports. Requests for condition reports must be submitted by 4pm on the day prior to the auction; condition reports may be available alongside the lot description on the online catalogue at: www.dreweatts.com.

COMMISSION CHARGES

All purchases are subject to a buyer's premium, which is charged per lot at 26% of the hammer price (31.2% including VAT) up to and including £20,000, 25% (30% including VAT) of the hammer price from £20,001 up to and including £500,000, 20% (24% including VAT) of the hammer price from £500,001 up to and including £1,000,000 and 12.5% of the hammer price (15% including VAT) in excess of £1,000,000. A theta symbol (θ) indicates that the lot is a zero rated item and therefore not subject to VAT on the buyer's premium. This applies to bound books (manuscripts and printed), unframed maps and albums. In the event the lot has a dagger (†) beside the lot number in the catalogue, this indicates that the lot is owned by an entity or company required to pay VAT (generally not an Antique Dealer, as they operate under a dealers margin scheme). VAT is payable at 20% on the Hammer Price. Lots marked with a double dagger (‡) (presently a reduced rate of 5%) or Ω (presently at standard rate of 20%) have been imported from outside the UK to be sold at auction and therefore the buyer must pay the import VAT at the appropriate rate on the hammer price.

PAYMENT

Payment will be accepted, if you are a successful bidder, by debit card

issued in the name of the Buyer by a UK bank and registered to a UK billing address; by all major UK issued credit cards issued in the name of the Buyer and registered to a UK billing address with the exception of Diners Club; by bank transfer direct into our bank account, Bank Details: NatWest, 30 Market Place, Newbury, Berkshire RG14 5AG. Account Name: Dreweatts 1759 Ltd. A/C: 62412949, Sort Code: 60-15-07, BIC: NWBKGB2L, IBAN: GB21NWBK60150762412949. The name of the bank account holder should match the name of the buyer. First time buyers who are not present at the saleroom are requested to pay by bank transfer.

CITES REGULATIONS

Please note that lots marked with the symbol (Y) in this catalogue may be subject to CITES Regulations when exported. Relevant CITES Regulations may be found at www.gov.uk/guidance/cites-imports-and-exports.

COLLECTION OR DELIVERY

Before being able to collect your purchases you are required to pay the hammer price, plus the applicable commissions, and obtain a receipt acknowledging payment. Collection of the purchased lots is at the purchaser's risk and expense and whilst Dreweatts do not provide packing and despatch service we can suggest some carriers.

Dreweatts also require that all purchased items are collected within four working days of the sale to avoid a storage charge being applied.

STORAGE CHARGES

All items not collected by 4pm, within four working days of the sale, will be automatically removed to commercial storage and subject to a minimum storage charge of £20 (plus VAT) per lot and to a further storage charge of £3 (plus VAT) per lot per part or full day thereafter. These charges will be the sole liability of the purchaser and will be billed directly to them by Sackville-West Moving & Storing; Sackville-West Moving & Storing may be willing to adjust their charges if they are instructed by the purchaser to deliver to them. On payment of all sales and storage costs, items will be available for collection by appointment from Sackville-West Moving & Storing (Andover), tel: + 44 (0) 2080 909988, email: office@sackvillewest.co.uk. These charges are set by Sackville-West Moving & Storing; we recommend that you contact them directly regarding queries relating to these charges and other questions relating to storage. Staff at the saleroom will be unable to answer questions relating to items that have been removed from the saleroom.

FURTHER INFORMATION

The colours printed in this catalogue are not necessarily a true reflection of the actual item. All weights and measures given in the catalogue should be regarded as approximate.

VALUATION SERVICES

Dreweatts provides a range of confidential and professional valuation services to private clients, solicitors, executors, estate managers, trustees and other professional partners. These services include auction valuations, insurance valuations, probate valuations, private treaty valuations, valuations for family division or for tax purposes. For more information, please see our website: www.dreweatts.com.

For directions to Donnington Priory, please see our website: www.dreweatts.com.

Parking is available at Donnington Priory in two car parks on either side of the saleroom.

INFORMATION FOR BUYERS AT PUBLIC AUCTIONS

1. **INTRODUCTION.** The following notes are intended to assist Bidders and Buyers, particularly those inexperienced or new to our salerooms. All of our auctions and sales are conducted on our printed Auction Terms and Conditions, including these Conditions of Sale and Business, which are readily available for inspection and normally accompany catalogues. Our staff will be happy to help you if there is anything you do not fully understand.

Any particular auction and/or any particular lot in an auction may be subject to different or additional terms which will be published in our auction catalogue. All auctions and sales of wines and spirits, jewellery, watches and clocks are subject to the special terms set out in the relevant Notices in relation to those items published in our auction catalogue and, in the event of any conflict or inconsistency, those special terms prevail over any other terms in our Auction Terms and Conditions. By bidding at the auction, you agree to be bound by these terms.

2. **AGENCY.** As auctioneers we usually act as agents for the seller whose identity, for reasons of confidentiality, is not normally disclosed. Accordingly if you buy at auction your contract for the item or items purchased is with the seller and not with us as the auctioneer.

3. **ESTIMATES.** Estimates are designed to help buyers gauge what sort of sum might be involved for the purchase of a particular lot. Estimates may change and should not be thought of as the sale price. The lower estimate may represent the reserve price and certainly will not be below it. Estimates do not include the Buyer's Premium or VAT (where chargeable). Estimates are prepared some time before the sale and may be altered by announcement before the sale. They are in no sense definitive.

4. **BUYER'S PREMIUM.** The Conditions of Sale forming part of our Auction Terms and Conditions require the buyer to pay a buyer's premium on the hammer price of each lot purchased. The buyer's premium is 26% of the hammer price up to and including £20,000, 25% of the hammer price from £20,001 up to and including £500,000, 20% of the hammer price from £500,001 up to and including £1,000,000, and 12.5% of the hammer price in excess of £1,000,000. VAT at the prevailing rate of 20% is added to buyer's premium and additional charges as defined below.

5. **VAT.** A theta symbol (θ) indicates that the lot is a zero rated item and therefore not subject to VAT on the buyer's premium. This applies to bound books (manuscripts and printed), unframed maps and albums. A dagger symbol (†) indicates that VAT is payable by the purchaser at the standard rate (presently 20%) on the hammer price as well as being an element in the buyers' premium. This imposition of VAT is likely to be because the seller is registered for VAT within the European Union and is not operating the Dealers Margin Scheme or because VAT is due at 20% on import into the UK. A double dagger (‡) indicates that the lot has been imported from outside the UK and the present position is that these lots are liable to a reduced rate of Import VAT currently 5% on the hammer price. (Ω) indicates that the lot has been imported from outside the UK and these lots are liable to the standard rate of Import VAT currently 20% on the hammer price. Lots which appear without the above symbols indicate that no VAT is payable on the hammer price; this is because such lots are sold using the Auctioneers Margin Scheme and it should be noted that the VAT included within the buyers' premium is not recoverable as input tax.

6. **DESCRIPTION AND CONDITION.** Condition reports are provided on our website or upon request. The absence of a report does not imply that a lot is without imperfections. The detail in a report will reflect the estimated value of the lot. Large numbers of such requests received shortly before the sale may mean that reports cannot be provided for all lots. Members of staff are not trained restorers or conservators and, particularly for higher value lots, you should obtain an opinion from such a professional. Dreweatts is not liable for damage to gilded picture frames, plaster picture frames or picture frame glass; if a Lot is or becomes dangerous, we may dispose of it without notice to bidders in advance in any manner we see fit and will be under no liability for doing so. We recommend that you always view a lot in person.

We are dependent on information provided by the seller about a lot and whilst we may inspect lots and act reasonably in taking a general view about them we are normally unable to carry out a detailed examination and frequently no examination of lots in order to ascertain their condition in the way in which it would be wise for a buyer to do. Intending buyers have ample opportunity for inspection of goods and, therefore, accept responsibility for inspecting and investigating lots in which they may be interested and the corresponding risk should they not do so. Please note carefully the exclusion of liability for the condition of lots contained in the Conditions of Sale. Neither the seller nor we, as the auctioneers, accept any responsibility for their condition. In particular, mechanical objects of any age are not guaranteed to be in working order. However, in so far as we have examined the goods and make a representation about their condition in the auction catalogue, we shall be liable for any defect which is not reflected in that representation and which

that examination ought to have revealed to the auctioneer but which would not have been revealed to the buyer had the buyer examined the goods. Additionally, in specified circumstances lots misdescribed because they are 'deliberate forgeries' may be returned and repayment made. There is a 3 week time limit. (The expression 'deliberate forgery' is defined in our Conditions of Sale).

7. **ELECTRICAL GOODS.** These are sold as 'antiques' only and if bought for use must be checked over for compliance with safety regulations by a qualified electrician before use.

8. **EXPORT OF GOODS.** Buyers intending to export goods should ascertain (a) whether an export licence is required and (b) whether there is any specific prohibition on importing goods of that character because, e.g. they may contain prohibited materials such as ivory. Ask us if you need help.

Private overseas buyers can only receive goods free of VAT or have the VAT amount refunded if Dreweatts acts as exporter in relation to the sale, the goods are exported within 3 months of the sale and Dreweatts is in possession of adequate export documents. The VAT refunds are available for transactions exceeding £2,500. If you arrange for the goods to be picked up/delivered to you directly we will charge UK VAT at the appropriate rate and no refund will be available. Please note, buyers are responsible for completing the importation procedures as well as the payment of any relevant duty/VAT payable on importation into the destination country.

Where the purchase has been made in the business or trading name, VAT refund will be available on proof of export provided within 3 months of the sale.

9. **BIDDING.** Bidders will be required to register before the sale commences and lots will be invoiced to the name and address on the sale registration form. Bidders are required to provide a government issued identity document and a proof of address. Please enquire in advance about our arrangements for telephone bidding.

10. **COMMISSION BIDDING.** Commission bids may be left with the auctioneers indicating the maximum amount to be bid excluding buyers' premium. Dreweatts will add these bids to the auctioneers' sale book and they will be executed as cheaply as possible having regard to the reserve (if any) and competing bids. If two buyers submit identical commission bids the auctioneers may prefer the first bid received. Please enquire in advance about our arrangements for the leaving of commission bids by telephone or fax. Dreweatts does not accept liability for failing to execute commission bids, or for any errors or omissions.

11. **METHODS OF PAYMENT.** Payment will be accepted, if you are a successful bidder, by debit card issued in the name of the Buyer by a UK bank and registered to a UK billing address; by all major UK issued credit cards issued in the name of the Buyer and registered to a UK billing address with the exception of Diners Club; by bank transfer direct into our bank account, Bank Details: NatWest, 30 Market Place, Newbury, Berkshire RG14 5AG. Account Name: Dreweatts 1759 Ltd. A/C: 62412949, Sort Code: 60-15-07, BIC: NWBKGB2L, IBAN: GB21NWBK60150762412949. The name of the bank account holder should match the name of the buyer. First time buyers who are not present at the saleroom are requested to pay by bank transfer.

12. **COLLECTION AND STORAGE.** Please note what the Conditions of Sale state about collection and storage. It is important that goods are paid for and collected promptly. Any delay may involve the buyer in paying storage charges.

13. **λ DROIT DE SUITE ROYALTY CHARGES.** From 1st January 2012 all UK art market professionals (which includes but is not limited to; auctioneers, dealers, galleries, agents and other intermediaries) are required to collect a royalty payment for all works of art that have been produced by qualifying artists each time a work is re-sold during the artist's lifetime and for a period up to 70 years following the artists death. This payment is only calculated on qualifying works of art which are sold for a hammer price more than the UK sterling equivalent of EURO 1,000 – the UK sterling equivalent will fluctuate in line with prevailing exchange rates. It is entirely the responsibility of the buyer to acquaint himself with the precise EURO to UK Sterling exchange rate on the day of the sale in this regard, and the auctioneer accepts no responsibility whatsoever if the qualifying rate is different to the rate indicated. All items in this catalogue that are marked with λ are potentially qualifying items, and the royalty charge will be applied if the hammer price achieved is more than the UK sterling equivalent of EURO 1,000. The royalty charge will be added to all relevant buyers' invoices, and must be paid before items can be cleared. All royalty charges are passed on to the Design and Artists Copyright Society ('DACS'), no handling costs or additional fees with respect to these charges will be retained by the auctioneers. The royalty charge that will be applied to qualifying items which achieve a hammer price of more than the UK sterling equivalent of EURO 1,000, but less than the UK sterling equivalent of EURO 50,000 is 4%. For qualifying items that sell for more than the UK sterling equivalent of EURO 50,000 a sliding scale of royalty charges will apply – for a complete list of the royalty charges and threshold levels, please see www.dacs.org.uk. There is no VAT payable on this royalty charge.

TERMS OF CONSIGNMENT FOR SELLERS IN PUBLIC AUCTIONS

The sale of goods at our public auctions and a seller's relationship with us are governed by our Auction Terms and Conditions including these Terms of Consignment for Sellers in Public Auctions and our Conditions of Sale for Public Auctions. Any particular auction and/or any particular lot in an auction may be subject to different or additional terms which will be published in our auction catalogue or separately announced prior to the auction. All auctions and sales of wines and spirits, jewellery, watches and clocks are subject to the special terms set out in the relevant Notices in relation to those items published in our auction catalogue and, in the event of any conflict or inconsistency, those special terms prevail over any other terms in our Auction Terms and Conditions. Please note that our Auction Terms and Conditions including these Terms of Consignment for Sellers in Public Auctions and our Conditions of Sale for Public Auctions relate to auctions held in our salerooms and we have separate terms and conditions for our online auctions.

If you, or another person acting on your behalf, provide goods to us to sell on your behalf at one of our auctions this signifies that you agree to and will comply with our Auction Terms and Conditions including these Terms of Consignment for Sellers in Public Auctions and our Conditions of Sale for Public Auctions.

1. **INTERPRETATION.** In these Terms the words 'you', 'yours', etc. refer to the Seller and if the consignment of goods to us is made by an agent or otherwise on the Seller's behalf we assume that the Seller has authorised the consignment and that the consignor has the Seller's authority to contract. All obligations that apply to the Seller under these Terms of Consignment for Sellers in Public Auctions shall apply to the owner of the goods and their agent jointly and separately. Similarly the words 'we', 'us', etc. refer to the Auctioneers.

2. **WARRANTY.** The Seller warrants that possession in the lots can be transferred to the Buyer with good and marketable title, free from any third party right and encumbrances, claims or potential claims. The Seller has provided all information concerning the item's ownership, condition and provenance, attribution, authenticity, import or export history and of any concerns expressed by third parties concerning the same.

3. **ALL COMMISSIONS.** and fees are subject to VAT at the prevailing rate.

4. **COMMISSION.** is charged to sellers and all selling terms are available from our saleroom.

5. **REMOVAL COSTS.** Items for sale must be consigned to the saleroom by any stated deadline and at your expense. We may be able to assist you with this process but any liability incurred to a carrier for haulage charges is solely your responsibility.

6. LOSS AND DAMAGE OF GOODS

(a) Loss and Damage Warranty - Dreweatts is not authorised by the FCA to provide insurance to its clients, and does not do so. However Dreweatts for its own protection assumes liability for property consigned to it at the lower pre-sale estimate until the hammer falls. To justify accepting liability, Dreweatts makes a charge of 1.5% of the hammer price plus VAT, subject to a minimum charge of £1.50, or if unsold 1.5% of our lower estimate. The liability assumed by Dreweatts shall be limited to the lower pre-sale estimate or the hammer price if the lot is sold. Dreweatts is not liable for damage to gilded picture frames, plaster picture frames or picture frame glass; if the Lot is or becomes dangerous, we may dispose of it without notice to you in advance in any manner we see fit and will be under no liability for doing so.

(b) If the owner of the goods consigned instructs us in writing not to take such action, the goods then remain entirely at the owner's risk unless and until the property in them passes to the Buyer or they are collected by or on behalf of the owner, and clause 6 (a) is inapplicable.

7. **ILLUSTRATIONS AND PHOTOGRAPHS.** The cost of any illustrations or photographs is borne by you. The copyright in respect of such illustrations and photographs shall be the property of us, the auctioneers, as is the text of the catalogue.

8. **MINIMUM BIDS AND OUR DISCRETION.** Goods will normally be offered subject to a reserve agreed between us before the sale in accordance with clause 9. We may sell Lots below the reserve provided we account to you for the same sale proceeds as you would have received had the reserve been the hammer price. If you specifically give us a "discretion" we may accept a bid of up to 10% below the formal reserve.

9. RESERVES

(a) You are entitled to place prior to the auction a reserve on any lot consigned, being the minimum hammer price at which that lot may be sold. Reserves must be reasonable and we may decline to offer goods which in our opinion would be subject to an unreasonably high reserve (in which case goods carry the storage and loss and damage warranty charges stipulated in these Terms of Consignment).

(b) A reserve once set cannot be changed except with our consent.

(c) Where a reserve has been set which we consider unreasonably high, an unsold charge will be payable in the event that the lots fails to sell, being the agreed selling terms calculated on the reserve, LDW at 1.5% and any photographic charges.

(d) Where a reserve has been placed only we may bid on your behalf and only up to the reserve (if any) and you may in no circumstances bid personally.

(e) Reserves are not usually accepted for lots expected to realise below £100.

10. **ELECTRICAL ITEMS.** These are subject to detailed statutory safety controls. Where such items are accepted for sale you accept responsibility for the cost of

testing by external contractors. Goods not certified as safe by an electrician (unless antiques) will not be accepted for sale. They must be removed at your expense on your being notified. We reserve the right to dispose of unsafe goods as refuse, at your expense.

11. **SOFT FURNISHINGS.** The sale of soft furnishings is strictly regulated by statute law in the interests of fire safety. Goods found to infringe safety regulations will not be offered and must be removed at your expense. We reserve the right to dispose of unsafe goods as refuse, at your expense. The rights of disposal referred to in clause 10 and 11 are subject to the provisions of The Torts (Interference with Goods) Act 1977.

12. **DESCRIPTION.** Please assist us with accurate information as to the provenance, lawful import etc. of goods where this is relevant. There is strict liability for the accuracy of descriptions under modern consumer legislation and in some circumstances responsibility lies with sellers if inaccuracies occur. We will assume that you have approved the catalogue description of your lots and that your lots match those descriptions unless informed to the contrary. Where we are obliged to return the price to the buyer when the lot is a deliberate forgery under Condition 15 of the Conditions of Sale and we have accounted to you for the proceeds of sale you agree to reimburse us the sale proceeds and in any event within 7 days of our written notice to do so.

13. **UNSOLD.** If an item is unsold it may at our discretion be re-offered at a future sale. Where in our opinion an item is unsaleable you must collect such items from the saleroom promptly on being so informed. Otherwise, storage charges may be incurred. We reserve the right to charge for storage in these circumstances at a reasonable daily rate.

14. **WITHDRAWN AND BOUGHT IN ITEMS.** These are liable to incur a charge of 15% commission, 1.5 % Loss and Damage Warranty and any other costs incurred including but not limited to illustration and restoration fees all of these charges being subject to VAT on being bought in or withdrawn after being catalogued.

15. **CONDITIONS OF SALE.** You agree that all goods will be sold on our Conditions of Sale for Public Auctions. In particular you undertake that you have the right to sell the goods either as owner or agent for the owner with good and marketable title and free and clear of any third party rights or claims. You undertake to compensate us and any buyer or third party for all losses liabilities, costs and expenses suffered or incurred arising out of or in connection with any breach of this undertaking. We will also, at our discretion, and as far as practicable, confirm that an item consigned for sale does not appear on the Art Loss register, which is administered by an independent third party.

16. **DUE DILIGENCE CHECKS AND ANTI-MONEY LAUNDERING PROCEDURES.** Under the money laundering regulations in force we are required to carry out relevant due diligence checks. This includes verifying the identity of all customers we transact with as well as any beneficial owners on behalf of whom they may transact. Vendors who are unable to or refuse to supply required identification documents and proof of address will not be able to consign to Dreweatts auctions. Copies of customer due diligence checks will be stored for as long as it is necessary to satisfy legal requirements in an appropriate storage facility, which for the avoidance of doubt may include storage solely in electronic form. We reserve the right to withhold the monies owed until the vendor provides the information necessary to complete the anti-money laundering checks.

17. AUTHORITY TO DEDUCT COMMISSION AND EXPENSES AND RETAIN PREMIUM AND INTEREST

(a) You authorise us to deduct commission at the stated rate and all expenses incurred for your account from the hammer price and consent to our right to retain beneficially the premium paid by the buyer in accordance with our Conditions of Sale for Public Auctions and any interest earned on the sale proceeds until the date of settlement.

(b) In case of lots unsold at auction you authorise us at our discretion to reoffer such lots and negotiate a sale within seven days of the auction date, in which case the same charges will be payable as if such lots had been sold at auction and so far as appropriate these Terms apply.

18. **WAREHOUSING.** We disclaim all liability for goods delivered to our saleroom without sufficient sale instructions and reserve the right to make minimum warehousing charge of £10 per lot per day. Unsold lots are subject to the same charges if you do not remove them within a reasonable time of notification. If not removed within three weeks we reserve the right to sell them and defray charges from any net proceeds of sale or at your expense to consign them to the local authority for disposal.

19. **SETTLEMENT.** After sale settlement of the net sum due to you normally takes place within 28 days of the sale unless the buyer has not paid for the goods or the checks necessary under the current Money Laundering Regulations have not been completed. In this case no settlement will then be made but we will take your instructions in the light of our Conditions of Sale for Public Auctions. You authorise any sums owed by you to us on other transactions to be deducted from the sale proceeds. You must note the liability to reimburse the proceeds of sale to us as under the circumstances provided for in Condition 12 above. You should therefore bear this potential liability in mind before parting with the proceeds of sale until the expiry of 28 days from the date of sale.

CONDITIONS OF SALE FOR PUBLIC AUCTIONS

Dreweatts carries on business with bidders, buyers and all those present in the auction room prior to or in connection with a sale by auction at our salerooms on our Auction Terms and Conditions or Public Auctions including these Conditions of Sale for Public Auctions and all bidders, buyers and others participating in a public auction accept that these terms apply to the exclusion of any terms and conditions contained in any of those person's own documents even if the same purport to provide that that person's own or some other terms prevail. Any particular public auction and/or any particular lot in an auction may be subject to different or additional terms which will be published in our online auction catalogue. Please note that our Auction Terms and Conditions including these Conditions of Sale for Public Auctions relate to auctions held in one of our salerooms and we have separate terms and conditions for our online auctions.

1. DEFINITIONS

In these Conditions:

(a) "auctioneer" means the firm of Dreweatts or its authorised auctioneer, as appropriate;

(b) "deliberate forgery" means an imitation made with the intention of deceiving as to authorship, origin, date, age, period, culture or source but which is unequivocally described in the catalogue as being the work of a particular creator and which at the date of the sale had a value materially less than it would have had if it had been in accordance with the description;

(c) "hammer price" means the level of bidding reached (at or above any reserve) when the auctioneer brings down the hammer;

(d) "terms of consignment" means the stipulated terms and rates of commission on which Dreweatts accepts instructions from sellers or their agents;

(e) "total amount due" means the hammer price in respect of the lot sold together with any premium, Value Added Tax chargeable and any additional charges payable by a defaulting buyer under these Conditions;

(f) "sale proceeds" means the net amount due to the seller, being the hammer price of the lot sold less commission at the stated rate, Value Added Tax chargeable and any other amounts due to us by the seller in whatever capacity and however arising;

(g) "You", "Your", etc. refer to the buyer as identified in Condition 2.

(h) The singular includes the plural and vice versa as appropriate.

2. BIDDING PROCEDURES AND THE BUYER

(a) Bidders are required to register their particulars before bidding by completing a sale registration form and to satisfy any security arrangements before entering the auction room to view or bid;

(b) Under the money laundering regulations in force we are required to verify the identity of all customers we transact with as well as any beneficiaries on behalf of whom they may transact. Customers who are unable to or refuse to supply required identification documents and proof of address will not be able to bid in Dreweatts auctions. Copies of customer due diligence checks will be stored for as long as it is necessary to satisfy legal requirements in an appropriate storage facility which for the avoidance of doubt may include storage solely in electronic form;

(c) the maker of the highest bid accepted by the auctioneer conducting the sale shall be the buyer at the hammer price and any dispute about a bid shall be settled at the auctioneer's absolute discretion by reoffering the Lot during the course of the auction or otherwise. The auctioneer shall act reasonably in exercising this discretion.

(d) Bidders shall be deemed to act as principals;

(e) Our right to bid on behalf of the seller is expressly reserved up to the amount of any reserve and the right to refuse any bid is also reserved.

3. **INCREMENTS.** Bidding increments shall be at the auctioneer's sole discretion.

4. **THE PURCHASE PRICE.** The buyer shall pay the purchase price together with a premium thereon of 30% which shall include VAT on the premium at the rate imposed by law. The buyer will also be liable for any royalties payable under Droit de Suite as set out under Information for Buyers.

5. **VALUE ADDED TAX.** Value Added Tax on the hammer price is imposed by law on all items affixed with a dagger (†) or double dagger (‡). Value Added Tax is charged at the appropriate rate prevailing by law at the date of sale and is payable by buyers of relevant Lots. (Please refer to "Information for Buyers" for a brief explanation of the VAT position).

6. PAYMENT

(a) Immediately a Lot is sold you will:

(i) give to us, if requested, proof of identity, and

(ii) pay to us the total amount due or in such other way as is agreed by us.

(b) Any payments by you to us may be applied by us towards any sums owing from you to us on any account whatever without regard to any directions of you or your agent, whether expressed or implied.

(c) In order to comply with money laundering regulations we reserve the right to require proof of source of funds and/or confirmation of the nature and source of wealth for all receipts of monies from clients directly or from third parties for payments on behalf of clients. Lots will only be released once we have completed necessary checks under the current Money Laundering Regulations.

7. TITLE AND COLLECTION OF PURCHASES

(a) The ownership of any Lots purchased shall not pass to you until you have made payment in full to us of the total amount due.

(b) You shall at your own risk and expense take away any lots that you have purchased and paid for not later than 3 working days following the day of the auction after which you shall be responsible for any removal, storage and insurance charges.

(c) No purchase can be claimed or removed until it has been paid for and we have completed necessary checks under the current Money Laundering Regulations.

8. REMEDIES FOR NON-PAYMENT OR FAILURE TO COLLECT PURCHASES

(a) If any Lot is not paid for in full and taken away in accordance with these Conditions or if there is any other breach of these Conditions, we, as agent for the seller and on our own behalf, shall at our absolute discretion and without prejudice to any other rights we may have, be entitled to exercise one or more of the following rights and remedies:

(i) to proceed against you for damages for breach of contract;

(ii) to rescind the sale of that Lot and/or any other Lots sold by you to you;

(iii) to resell the Lot (by auction or private treaty) in which case you shall be responsible for any resulting deficiency in the total amount due (after crediting any part payment and adding any resale costs). Any surplus so arising shall belong to the seller;

(iv) to remove, store and insure the Lot at your expense and, in the case of storage, either at our premises or elsewhere;

(v) to charge interest at a rate not exceeding 1.5% per month on the total amount due to the extent it remains unpaid for more than 3 working days after the sale;

(vi) to retain that or any other Lot sold to you until you pay the total amount due;

(vii) to reject or ignore bids from you or your agent at future auctions or to impose conditions before any such bids shall be accepted;

(viii) to apply any proceeds of sale of other Lots due or in future becoming due to you towards the settlement of the total amount due and to exercise a lien (that is a right to retain possession of) any of your property in our possession for any purpose until the debt due is satisfied.

(b) We shall, as agent for the seller and on our own behalf pursue these rights and remedies only so far as is reasonable to make appropriate recovery in respect of breach of these conditions.

9. **THIRD PARTY LIABILITY.** All bidders, buyers and other members of the public on our premises are there at their own risk and must note the lay-out of the accommodation and security arrangements. Accordingly neither the auctioneer nor our employees or agents shall incur liability for death or personal injury or for the safety of the property of persons visiting prior to or at a sale (except in each case as may be required by law by reason of our negligence)

10. **COMMISSION BIDS.** Whilst prospective buyers are strongly advised to attend the auction and are always responsible for any decision to bid for a particular Lot and shall be assumed to have carefully inspected and satisfied themselves as to its condition, we will if so instructed clearly and in writing execute bids on their behalf. Neither the auctioneer nor our employees or agents shall be responsible for any failure to do so.

Where two or more commission bids at the same level are recorded we reserve the right in our absolute discretion to prefer the first bid so made.

11. **WARRANTY OF TITLE AND AVAILABILITY.** The seller warrants to the auctioneer and you that the seller is the true owner of the property consigned or is properly authorised by the true owner to consign for sale and is able to transfer good and marketable title to the property free from any third party claims.

Save as expressly set out above, all other warranties, conditions or other terms which might have effect between the Seller and you, or us and you, or be implied or incorporated by statute, common law or otherwise are excluded to the fullest extent permitted by law.

12. **AGENCY.** The auctioneer normally acts as agent only and disclaims any responsibility for default by sellers or buyers.

13. **TERMS OF SALE.** The seller acknowledges that Lots are sold subject to the stipulations of these Conditions in their entirety and on the Terms of Consignment for Public Auctions as notified to the consignor at the time of the entry of the Lot.

14. DESCRIPTIONS AND CONDITION

(a) Whilst we seek to describe lots accurately, it may be impractical for us to carry out exhaustive due diligence on each lot. Prospective buyers are given ample opportunities to view and inspect before any sale and they (and any independent experts on their behalf) must satisfy themselves as to the accuracy of any description applied to a lot. Prospective buyers also bid on the understanding that, inevitably, representations or statements by us as to authorship, genuineness, origin, date, age, provenance, condition or estimated selling price involve matters of opinion. We undertake that any such opinion shall be honestly and reasonably held and accept liability for opinions given negligently or fraudulently. Subject to the foregoing neither we the auctioneer nor our employees or agents nor the seller accept liability for the correctness of such opinions and all conditions and warranties, whether relating to description, condition or quality of lots, express, implied or statutory, are hereby excluded. Dreweatts is not liable for damage to gilded picture frames, plaster picture frames or picture frame glass; if the Lot is or becomes dangerous, we may dispose of it without notice to you in advance in any manner we see fit and will be under no liability for doing so. This Condition is subject to the next following Condition concerning deliberate forgeries and applies save as provided for in paragraph 6 "information to buyers".

(b) Private treaty sales made under these Conditions are deemed to be sales by auction for purposes of consumer legislation.

15. **FORGERIES.** Notwithstanding the preceding Condition, any Lot which proves to be a deliberate forgery (as defined) may be returned to us by you within 21 days of the auction provided it is in the same condition as when bought, and is accompanied by particulars identifying it from the relevant catalogue description and a written statement of defects. If we are satisfied from the evidence presented that the Lot is a deliberate forgery we shall refund the money paid by you for the Lot including any buyer's premium provided that (1) if the catalogue description reflected the accepted view of scholars and experts as at the date of sale or (2) you personally are not able to transfer a good and marketable title to us, you shall have no rights under this condition.

The right of return provided by this Condition is additional to any right or remedy provided by law or by these Conditions of Sale.

16. **PRIVACY NOTICE.** We will hold and process any personal data in relation to you in accordance with our current privacy policy, a copy of which is available on our website www.dreweatts.com/privacy-policy/.

GENERAL

17. We shall have the right at our discretion, to refuse admission to our premises or attendance at our auctions by any person.

18. (a) Any right to compensation for losses liabilities and expenses incurred in respect of and as a result of any breach of these Conditions and any exclusions provided by them shall be available to the seller and/or the auctioneer as appropriate.

(b) Such rights and exclusions shall extend to and be deemed to be for the benefit of employees and agents of the seller and/or the auctioneer who may themselves enforce them.

19. Any notice to any buyer, seller, bidder or viewer may be given by first class mail, email or Swiftmail in which case it shall be deemed to have been received by the addressee 48 hours after posting.

20. Special terms may be used in catalogue descriptions of particular classes of items in which case the descriptions must be interpreted in accordance with any glossary appearing at the commencement of the catalogue.

21. Any indulgence extended to bidders, buyers or sellers by us notwithstanding the strict terms of these Conditions or of the Terms of Consignment shall affect the position at the relevant time only and in respect of that particular concession only; in all other respects these Conditions shall be construed as having full force and effect.

22. These Conditions shall be governed by and construed in accordance with English law and the parties irrevocably submit to the exclusive jurisdiction of the English courts.

DREWEATTS

NEWBURY

Dreweatts

Donnington Priory

Newbury

Berkshire RG14 2JE

+44 (0) 1635 553 553

info@dreweatts.com

DEPUTY CHAIRMAN

Will Richards

James Nicholson

LONDON

Dreweatts / Bloomsbury Auctions

16-17 Pall Mall

St James's

London SW1Y 5LU

+44 (0) 20 7839 8880

info@bloomsburyauctions.com

info@dreweatts.com

HAMBRIDGE LANE

Dreweatts

1 Hambridge Lane

Newbury

Berkshire RG14 5TU

+44 (0) 1635 553 553

info@dreweatts.com

GROUP DEPARTMENTS

AUTOGRAPHS AND EPHEMERA

Ania Hanrahan

ahanrahan@dreweatts.com

ASIAN CERAMICS AND WORKS OF ART

Mark Newstead

Dr Yingwen Tao

Lavinia Jin

asian@dreweatts.com

BLOOMSBURY AUCTIONS BOOKS

AND MANUSCRIPTS

Rupert Powell

Dido Arthur

Justin Phillips

Max Hasler

Richard Caroll

info@bloomsburyauctions.com

BRITISH AND EUROPEAN CERAMICS

AND GLASS

Mark Newstead

Geoffrey Stafford Charles

interiors@dreweatts.com

BRITISH AND EUROPEAN SCULPTURE

AND WORKS OF ART

Silas Currie Leigh-Wood

sculpture@dreweatts.com

CLOCKS AND SCIENTIFIC INSTRUMENTS

Leighton Gillibrand

clocks@dreweatts.com

COUNTRY SPORTING

Geoffrey Stafford Charles

gscharles@dreweatts.com

DECORATIVE ARTS AND MODERN DESIGN

Geoffrey Stafford Charles

Ashley Matthews

interiors@dreweatts.com

FURNITURE AND CARPETS

Ben Brown

Elaine Binning

Ashley Matthews

William Turkington

Mitchell Tompkins

furniture@dreweatts.com

HOUSE SALES AND PRIVATE COLLECTIONS

Joe Robinson

Eloise Kerr-Smiley

Arabella Methuen

housesales@dreweatts.com

JEWELLERY, SILVER, WATCHES AND OBJECTS

OF VERTU

James Nicholson

Charlotte Peel

Nick Mann

Tessa Parry

jsw@dreweatts.com

LIVE STEAM AND MODEL ENGINEERING

WORKS OF ART

Lucie Hobbs

transport@dreweatts.com

MODERN AND CONTEMPORARY ART

Jennie Fisher

Francesca Whitham

Will Porter (Business Development)

pictures@dreweatts.com

OLD MASTERS, BRITISH AND

EUROPEAN ART

Brandon Lindberg

Lucy Darlington

Daniele Amesso

pictures@dreweatts.com

WINE

Mark Robertson

Caroline Shepherd

Violette Jongbloed

Dianne Wall

wine@dreweatts.com

BUSINESS DEVELOPMENT

Will Richards

Will Porter

Joe Robinson

Ana Moas

Isabelle Rietkerk

irietkerk@dreweatts.com

CONSIGNMENT MANAGEMENT

Lucie Hobbs

Christy Chambers

consignments@dreweatts.com

VALUATIONS FOR PROBATE,

INSURANCE AND CGT

Emma Terry

Janice Cliff

valuations@dreweatts.com

