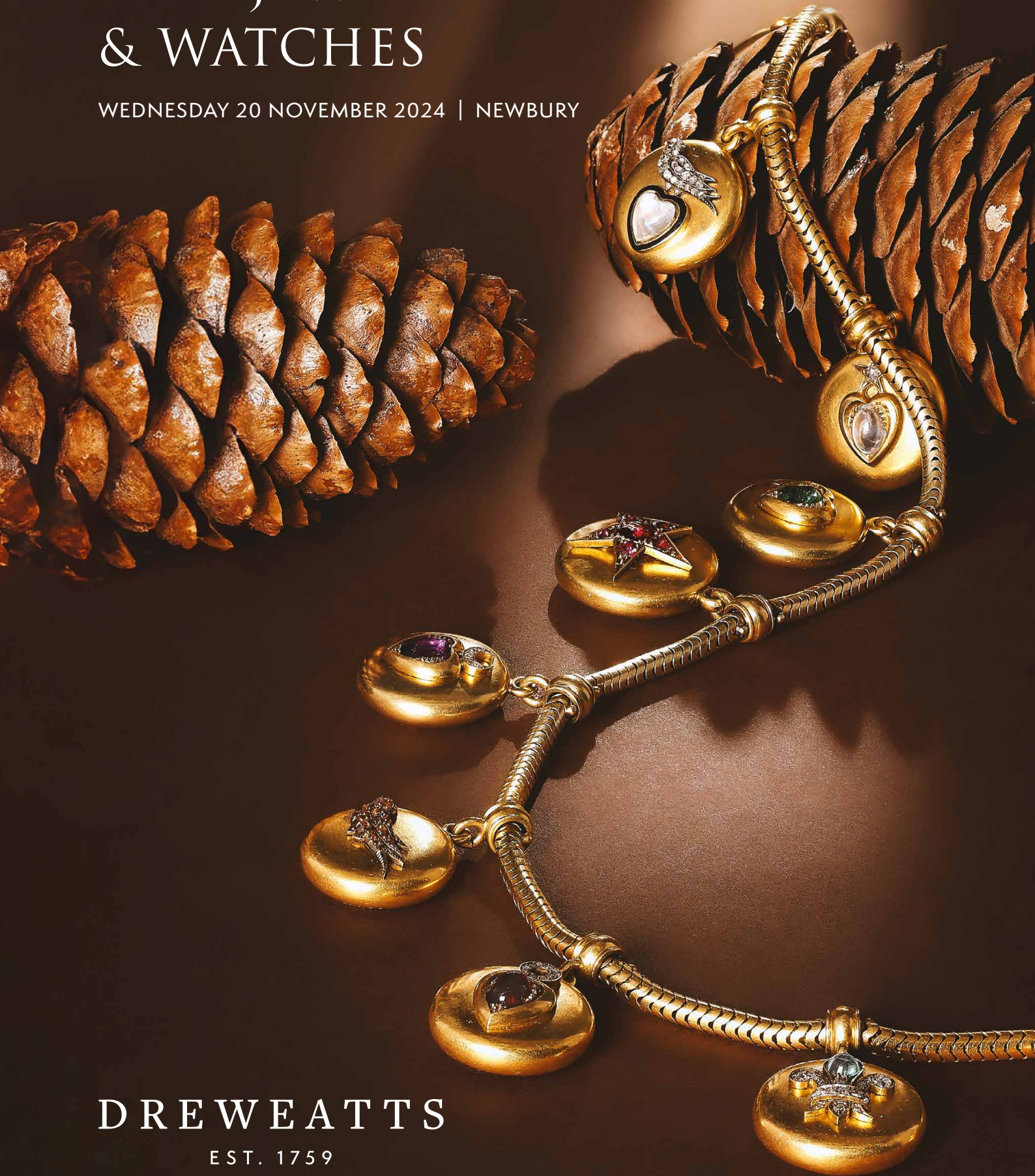


FINE JEWELLERY & WATCHES

WEDNESDAY 20 NOVEMBER 2024 | NEWBURY



DREWEATTS

EST. 1759



FINE JEWELLERY & WATCHES

WEDNESDAY 20 NOVEMBER 2024 | NEWBURY

LOTS 1-260 | 10.30AM

VIEWING IN LONDON (FULL SALE)

Tuesday 12 November: 10am–4pm

Wednesday 13 November: 10am–4pm

VIEWING IN NEWBURY (FULL SALE)

Sunday 17 November: 10am–3pm

Monday 18 November: 10am–4pm

Tuesday 19 November: 10am–4pm

No viewing on sale day

SPECIALISTS

James Nicholson FGA, DGA

Charlotte Peel GG

Nick Mann

Tessa Parry FGA, DGA

Terry Taylor MBHI (Consultant, Watches)

ENQUIRIES & CONDITION REPORTS

jsw@dreweatts.com

Catalogues £15 (£20 by post)

NEWBURY

Donnington Priory, RG14 2JE

+44 (0) 1635 553 553

LONDON

16 Pall Mall, SW1Y 5LU

+44 (0) 20 7839 8880

info@dreweatts.com

dreweatts.com

DREWEATTS

EST. 1759



REGISTRATION AND BIDDING

We advise bidders to register at least 48 hours in advance of the auction as we will need to complete Know Your Client checks on all registrants. We allow commission (or absentee bids), telephone bids, live online bidding, and in person bidding. More information is available in our Terms of Sale at the back of this catalogue, and on our website.

BUYER'S PREMIUM

26% of hammer price up to £20,000 (31.2% including VAT), plus

25% of hammer price from £20,001 up to £500,000 (30% including VAT), plus

20% of hammer price from £500,001 up to £1,000,000 (24% including VAT), plus

12.5% of hammer price in excess of £1,000,000 (15% including VAT)

ADDITIONAL CHARGES AND SYMBOLS

λ - Indicates that this lot may be subject to Droit de Suite (Artist Resale Right) royalty charges.

Y - Indicates that this lot may be subject to CITES regulations when exported.

† - Indicates that VAT is payable by the purchaser at the standard rate of 20% on the hammer price as well as being charged on the buyer's premium.

θ - Indicates that the lot is a zero rated item and therefore subject to buyer's premium of 26% exclusive of VAT (0% VAT).

‡ - Indicates that the lot is being sold whilst subject to temporary importation and that VAT is due at the reduced rate (5%).

Ω - Indicates that the lot has been imported from outside the UK and is liable to the standard rate of Import VAT currently 20% on the hammer price.

β - Indicates that the lot is offered in Bond. This applies to wine. Bidding will be at duty paid prices other than for those lots marked 'IN BOND/β'.

PAYMENT

If you are successful, you will receive an invoice to your registered email address, which will include detailed payment and collection information. If you wish to see this in advance, please visit our website. Items must be paid for in full and Know Your Client checks must be complete before we can release any purchases; first time buyers may also be subject to restrictions on the methods of payment we can accept. Please confirm this with the saleroom prior to collection.

COLLECTIONS, SHIPPING AND STORAGE

Unless otherwise stated below, purchases are available for collection from Dreweatts Donnington Priory salerooms from Monday to Friday (9am-5pm) by appointment only. If you wish to have the item shipped to you, please see the list of suggested shippers on our website.

Due to a busy schedule of sales, we are unable to store sold items at the salerooms; any items not collected after 4 working days of the sale (by 4pm) are removed to commercial storage and subject to a storage charge of £20 (plus VAT) per lot as well as a further storage charge of £3 (plus VAT) per lot per day thereafter. Please note for large consignments there may be additional charges. These charges will be the sole liability of the purchaser and will be billed directly to them by Sackville-West Moving & Storing. On payment of all sales and storage costs, items will be available for collection by appointment from Sackville-West Moving & Storing (Andover SP10 3SA).

CONDITIONS OF SALE

Any registration to bid is subject to acceptance of our Auction Terms and Conditions and Privacy Policy. Both are available on our website.

CONDITION OF ITEMS

Buyers must satisfy themselves to the condition of any item prior to bidding. Detailed condition reports and additional images are available upon request.

EXPORT OF ITEMS

If you intend to export goods out of the UK, we ask you to satisfy yourselves as to whether there is prohibition on exporting goods of that character e.g. if the goods contain prohibited materials such as ivory or they require an Export Licence on the grounds of exceeding a specific age and/or monetary value threshold as set by the Export Licensing unit. We are happy to make the submission of necessary applications on behalf of our buyers, but we will charge for this service only to cover the costs of our time.

GLOSSARY OF TERMS

Where relevant, for example Picture auctions or Clocks auctions, a glossary of cataloguing terms will be available at the back of our printed catalogues as well as via our website.



1
AN AMETHYST AND CHRYSOBERYL PENDANT NECKLACE
 MID 19TH CENTURY AND LATER
 The pear shaped amethyst pendant in a foiled closed back setting within a cannetille frame with similarly set oval chrysoberyl accent, suspended from an oval cut amethyst surmount in a cannetille border, to a three row chased cable link chain, composite, unmarked
 Size/dimensions: 39.5cm long
 Gross weight: 29.6 grams

£800-1,200

2
A MID 19TH CENTURY LONG CHAIN
 Composed of textured gold links to a barrel shaped clasp with cannetille decoration and cabochon turquoise accents, unmarked
 Size/dimensions: 142.0cm long
 Gross weight: 69.7 grams

£1,500-2,000

3
A MID 19TH CENTURY LONG CHAIN
 Composed of textured gold links to a hand shaped clasp set with a cabochon turquoise ring, unmarked
 Size/dimensions: 154.5cm long
 Gross weight: 30.2 grams

£1,500-2,000

4
AN EARLY 19TH CENTURY GEM SET LOCKET PENDANT
 CIRCA 1830
 Designed as a bi-coloured gold peacock with vari cut ruby and emerald feathers, within a cannetille frame accented with emeralds, to a glazed locket and cannetille reverse, unmarked
 Size/dimensions: 4.2cm long
 Gross weight: 15.9 grams

£1,000-1,500



5
A PAIR OF VICTORIAN GARNET DROP EARRINGS
 CIRCA 1870
 Each pear shaped cabochon garnet in a closed back mount with ropetwist frame, to a similarly set oval surmount, later post fittings, unmarked
 Size/dimensions: 3.1cm long
 Gross weight: 8.5 grams

£300-500

6
A 19TH CENTURY CITRINE RIVIERE
 Composed of a graduated line of oval cut citrines in coronet settings, with beaded loop connectors, unmarked
 Size/dimensions: 42.5cm long
 Gross weight: 40.1 grams

£1,000-1,500



7
A CITRINE BRACELET AND EARRINGS
 The bracelet composed of oval cut citrines in collet settings with ropetwist frames, to a tapered clasp with ropetwist trefoil, unmarked, the earrings of similar design, post fittings
 Size/dimensions: bracelet 17.0cm, earrings 1.8cm long
 Gross weight: 32.6 grams

£400-600



8
A GEORGIAN AMETHYST RIVIERE NECKLACE AND
PENDANT/BROOCH
CIRCA 1820
Composed of a graduated row of oval cut amethysts in
closed foil backed gold settings with
bead detail, suspending a detachable similarly set oval
and circular cut amethyst pendant,
with three pear shaped amethyst drops, unmarked
Size/dimensions: necklace 40.0cm, pendant 5.2cm long
Gross weight: 93.0 grams

£2,000-3,000

8

9

9
A 19TH CENTURY AMETHYST RIVIERE
CIRCA 1870
Composed of a graduated line of large circular cut amethysts
in gold beadwork mounts, unmarked
Size/dimensions: 45.0cm long
Gross weight: 164.0 grams

£2,500-3,500





10

10
**AN IMPORTANT GEORGIAN COMMEMORATIVE
DIAMOND AND HAIRWORK JEWEL FOR EDWARD IV
CIRCA 1789**

The glazed oval bezel containing a lock of Edward IV's hair in the form of a bow above the rose cut diamond cypher ER, beneath a rose cut diamond crown, on a light blue enamel ground, within an old European cut diamond surround, the curved reverse engraved *Hair of Edward 4th, who died [April] 9th 1483, discovered at Win[dsor], March 1789.*, later brooch and pendant fitting, converted from a ring
Size/dimensions: 3.7cm long
Gross weight: 10.6 grams

King Edward IV of England (1442-1483) was a central figure in the Wars of the Roses. Born on April 28, 1442, in Rouen, France, Edward was the eldest son of Richard, Duke of York, and Cecily Neville. His father's claim to the English throne was passed to Edward after Richard was killed at the Battle of Wakefield in 1460.

At just 18 years old, he led the Yorkist forces to a decisive victory at the Battle of Towton in 1461, effectively ending Lancastrian rule and allowing him to claim the throne as Edward IV. His reign was marked by attempts to consolidate power, but his secret marriage in 1464 to Elizabeth Woodville, a commoner and widow, sparked tensions with powerful nobles, particularly Richard Neville, the Earl of Warwick, who had been a key supporter.

The fallout from this marriage led to Edward's brief deposition in 1470 when Warwick and Edward's brother George, Duke of Clarence, aligned with the Lancastrians to restore Henry VI to the throne. However, Edward returned from exile in Flanders in 1471, reclaimed the throne after defeating Warwick at the Battle of Barnet and the Lancastrians at the Battle of Tewkesbury, and secured his position as king.

Edward's second reign (1471-1483) was more stable. He focused on restoring royal authority, strengthening the economy, and developing a more centralized government. However, his sudden death on April 9, 1483, at the age of 40, left his kingdom in turmoil. His 12-year-old son, Edward V, was declared king but was never crowned. Edward V and his brother, Richard, Duke of York, were imprisoned in the Tower of London, where they mysteriously disappeared, leading to the rise of Richard III.

Edward IV's legacy is a complex one, marked by his military successes, his efforts to stabilize the realm, and the unresolved mysteries surrounding his sons, the "Princes in the Tower."

King Edward IV was buried in St. George's Chapel at Windsor Castle, a royal chapel that he played a significant role in remodelling during his reign. Edward was laid to rest in a tomb situated in the north quire aisle of the chapel, alongside his wife, Elizabeth Woodville.

In the 18th century, during renovations to the chapel, Edward IV's tomb was accidentally disturbed, and his coffin was opened. This revealed some of his remains, including strands of his hair, which were surprisingly well preserved. These relics were later used in the creation of commemorative mourning jewellery, as was the custom of the time.

Locks of Edward IV's hair are in possession of the Society of Antiquaries and the Wellcome Collection, London, and a related mourning ring was sold at Christie's, 11th October 1995, lot 24.

£5,000-8,000





11

11
A PAIR OF DIAMOND PENDENT EARRINGS
Each pierced circular plaque set with brilliant and baguette cut diamonds, to a brilliant cut diamond quatrefoil surmount and baguette cut diamond connector, diamonds approximately 1.75 carats total, post fittings, stamped 750
Size/dimensions: 3.3cm long
Gross weight: 8.2 grams

£1,200-1,800



14

12
A SAPPHIRE, DIAMOND AND ROCK CRYSTAL BRACELET
Composed of a series of oval cut sapphire and brilliant cut diamond clusters mounted on carved rock crystal frames, with diamond set navette shaped spacers between, diamonds approximately 1.30 carats total, stamped PT950
Size/dimensions: 17.5cm long
Gross weight: 24.3 grams

£3,000-5,000



12

13
A DIAMOND LINE BRACELET
Set with a continuous row of brilliant cut diamonds in three claw mounts, diamonds approximately 4.50 carats total, stamped 18k 750
Size/dimensions: 18.0cm long
Gross weight: 7.6 grams

£800-1,200

14
A DIAMOND LINE NECKLACE
Composed of a graduated row of brilliant cut diamonds, approximately 4.00 carats total, stamped 18K
Size/dimensions: 42.0cm long
Gross weight: 15.8 grams

£1,000-1,500



13



15

15
AN AQUAMARINE AND SAPPHIRE THREE STONE RING
The oval cut aquamarine between an oval cut and a cushion shaped sapphire shoulder, to a bifurcated hoop
Size/dimensions: ring size J
Gross weight: 13.3 grams

£400-600



16

16
A PAIR OF CULTURED PEARL AND DIAMOND CLUSTER EARRINGS
Each 8.3mm cultured pearl within a brilliant cut diamond surround, approximately 1.00 carat total, post fittings, unmarked
Size/dimensions: 1.4cm long
Gross weight: 6.5 grams

£800-1,200



18

18
A PAIR OF DIAMOND STUD EARRINGS
Each brilliant cut diamond in a four claw mount, diamonds approximately 1.30 carats total, post fittings
Size/dimensions: 0.6cm long
Gross weight: 1.9 grams

£700-1,000



17



19

17
CARRERA Y CARRERA, A DIAMOND SET PANTHER BRACELET
Composed of alternating openwork fancy links, either polished or designed as three interlocking panther heads, accented with brilliant cut diamonds, approximately 0.35 carats total, stamped 750, signed Carrera y Carrera, numbered 249498, maker's case and guarantee card
Size/dimensions: 19.3cm long
Gross weight: 46.6 grams

£2,000-3,000

19
A DIAMOND CLUSTER RING
The pear shaped diamond, weighing 2.32 carats, to a brilliant cut diamond surround and three stone shoulders, stamped Plat
Size/dimensions: ring size T
Gross weight: 10.5 grams

£1,500-2,000



20



21



22



23



24

20
VICTOR MAYER FOR FABERGÉ, A MODERN RED ENAMEL AND DIAMOND EGG PENDANT
The 18 carat gold red guilloché enamel egg with curved black enamel and rows of brilliant cut diamonds, gilt star detail, with hinged bale, signed FABERGÉ, numbered 252/1000, VM mark, UK hallmark, with Fabergé box and certificate of authenticity
Size/dimensions: 3.0cm long
Gross weight: 6.4 grams

£500-700

21
ELSA PERETTI FOR TIFFANY & CO., A PAIR OF 18CT GOLD 'TEARDROP' EARRINGS
Each drop shaped surmount, suspending an elongated drop pendant, post fittings, signed Tiffany & Co, Peretti, maker's mark, UK hallmark, maker's case and card box
Size/dimensions: 4.2cm long
Gross weight: 8.0 grams

£500-700

22
A DIAMOND SINGLE STONE RING
The old European cut diamond, weighing 2.60 carats, in a six claw mount, stamped 18K 750
Size/dimensions: ring size P
Gross weight: 5.7 grams

£3,000-5,000

23
MCTEIGUE & CO., A DIAMOND AND ENAMEL UNICORN BROOCH
Designed as a pavé set brilliant and single cut diamond unicorn with a blue enamel collar and sculpted horn, tail and hooves, maker's mark McT, stamped Irid Plat, 18K
Size/dimensions: 6.0cm long
Gross weight: 17.3 grams

£3,000-5,000

24
A FANCY LINK NECKLACE
Composed of shaped alternating textured and polished fancy links, with indistinct marks to the concealed box clasp
Size/dimensions: 44.5cm long
Gross weight: 75.8 grams

£1,500-2,000



25
A CULTURED PEARL RING
 The 12.45mm cultured pearl mounted in a tapered brushed steel mount, unmarked
 Size/dimensions: ring size M
 Gross weight: 17.3 grams

£600-800

26
A FANCY LINK NECKLACE
 Composed of four rows of double disc-shaped links to a polished rectangular clasp, stamped 750
 Size/Dimensions: 48.0 cm long
 Gross weight: 235.7 grams

£5,000-8,000

27
A PAIR OF CULTURED PEARL AND DIAMOND EARRINGS
 Each of flowerhead design, the 12.49 and 12.64mm cultured pearls within a brilliant and baguette cut diamond petal surround, post and clip fittings, diamonds approximately 2.50 carats total, stamped 750
 Size/dimensions: 2.8cm long
 Gross weight: 25.9 grams

£2,500-3,500



28
MARINA B, A PAIR OF GEM SET EARRINGS
 Each cultured pearl within a curved frame pavé set with brilliant cut diamonds, with a pear shaped green tourmaline surmount and sugar loaf cabochon topaz base, clip fittings, signed Marina B, numbered A1339, maker's mark, stamped 750
 Size/dimensions: 3.1cm long
 Gross weight: 32.0 grams

£3,000-5,000

29
A SOUTH SEA CULTURED PEARL NECKLACE
 Composed of a graduated strand of 15.30-13.83mm cultured pearls, to a polished bead clasp inset with a row of brilliant cut diamonds, stamped G14K
 Size/dimensions: 46.5cm long
 Gross weight: 130.0 grams

£1,500-2,000

30
A PAIR OF DIAMOND SET EARRINGS
 Each designed as a flowerhead with pavé set brilliant cut diamond centre, diamonds approximately 0.90 carats total, stamped 18Kt 750
 Size/dimensions: 2.6cm wide
 Gross weight: 21.3 grams

£1,000-1,500



31

31
DAVID MORRIS, A SAPPHIRE AND DIAMOND NECKLACE AND BANGLE SET
 Of tapered reeded linking, set to the front with pear shaped bombé clusters of cabochon sapphires and brilliant cut diamonds, diamonds approximately 5.00 carats total, maker's mark DM, UK import mark 1993, bracelet with maker's case
 Size/dimensions: necklace 36.0cm, bangle inner diameter 5.4cm (sprung)
 Gross weight: 231.9 grams
 £8,000-12,000



32

32
DAVID MORRIS, A DIAMOND AND CULTURED PEARL BOW BROOCH
 CIRCA 1993
 The ribbon bow set throughout with brilliant cut diamonds and a central line of baguette cut diamonds, suspending two articulated drops, terminating in two 11 x 12mm South Sea cultured pearls, stamped 750, diamonds approximately 8.40 carats total, unsigned, accompanied by a David Morris valuation and maker's case
 Size/dimensions: 5.5cm long
 Gross weight: 17.8 grams
 £3,000-5,000



34

34
A THREE ROW CULTURED PEARL AND DIAMOND NECKLACE
Composed of three strands of 8.95 - 8.00mm cultured pearls to a brilliant and step cut diamond cluster clasp, diamonds approximately 3.50 carats total, unmarked
Size/dimensions: 39.0 grams
Gross weight: 137.6 grams

£1,200-1,800

34
A THREE ROW CULTURED PEARL AND DIAMOND NECKLACE
Composed of three strands of 8.95 - 8.00mm cultured pearls to a brilliant and step cut diamond cluster clasp, diamonds approximately 3.50 carats total, unmarked
Size/dimensions: 39.0 grams
Gross weight: 137.6 grams

£3,000-5,000



33

33
A PAIR OF DIAMOND SET DAY AND NIGHT EARRINGS
The reeded surmount collet set with a brilliant cut diamond centre and base, suspending a detachable reeded drop with a brilliant cut diamond band, diamonds approximately 0.45 carats total, post and clip fittings
Size/dimensions: 6.3cm long
Gross weight: 49.8 grams

£1,200-1,800

35
A THREE ROW CULTURED PEARL AND DIAMOND BRACELET
Composed of three rows of 8.95-8.05mm cultured pearls to a brilliant, marquise and baguette cut diamond cluster clasp, diamonds approximately 2.80 carats total, unmarked
Size/dimensions: 18.2cm long
Gross weight: 59.0 grams

£1,000-1,500



35



36

36
A DIAMOND SET CURB LINK NECKLACE AND BRACELET
Each designed as a brilliant cut diamond set flattened curb link chain, the necklace to a diamond pavé set rectangular clasp, diamonds approximately 16.50 carats total, the bracelet to a polished clasp with engraved framed centaur motif, unmarked
Size/dimensions: necklace 62.5cm, bracelet 21.0cm long
Gross weight: 739.6 grams

£8,000-12,000



37

A SAPPHIRE, DIAMOND AND COLOURED DIAMOND DRESS RING

The oval cut sapphire, weighing 7.23 carats, collet set within a bombé mount pavé set with brilliant cut diamonds and yellow diamonds, unmarked
 Size/dimensions: ring size G/H
 Gross weight: 11.5 grams

Offered for sale with a GRS report, no. GRS2008-101780, dated 22nd October 2008, stating:
 Variety: Natural Sapphire
 Origin opinion: Burma
 Comment: No indications of thermal treatment

Please note that the yellow diamonds are untested and unwarranted as natural colour

£10,000-15,000



37



38



39



40

38

LALAOUNIS, A 14CT GOLD COLLAR NECKLACE

CIRCA 1985
 Of elongated torque design with opposing scroll terminals, signed Lalaounis, maker's mark, UK import marks
 Size/dimensions: inner width 11.5cm
 Gross weight: 45.5 grams

£1,500-2,000

39

LALAOUNIS, A DIAMOND SET DRESS RING

The curved openwork panel of interwoven reeded bands accented with brilliant cut diamonds, to a reeded bifurcated band, maker's mark, stamped 750, A21
 Size/dimensions: ring size N
 Gross weight: 18.5 grams

£1,000-1,500

40

A PAIR OF SAPPHIRE, CULTURED MABÉ PEARL AND DIAMOND EARRINGS

Each cultured mabé pearl within a curled petal surround pavé set with circular cut sapphires and diamonds, articulated post and clip fittings, unmarked
 Size/dimensions: 2.3cm long
 Gross weight: 18.4 grams

£800-1,200



41



42



44



45



43



46



47

41
A SAPPHIRE AND DIAMOND PENDANT NECKLACE
The cabochon sapphire collet set within a single cut diamond surround, to a later cable link chain, chain with indistinct marks
Size/dimensions: pendant 1.8cm, chain 41.0cm long
Gross weight: 6.3 grams

£700-1,000

42
A SAPPHIRE AND DIAMOND RING
STOCKHOLM, 2000
The rectangular cut sapphire with canted corners between tiered princess cut diamond shoulders, mounted in platinum, Swedish hallmarks
Size/dimensions: ring size K1/2
Gross weight: 6.6 grams

£4,000-6,000

43
AN EARLY 20TH CENTURY GEM SET BRACELET
Composed of four graduated shaped openwork panels of millegrain set old European cut diamond clusters, between millegrain set oval cut sapphire and pearl connectors, to an expandable link bracelet, bracelet stamped Plat, B.P.N. Britannic, numbered 338856
Size/dimensions: 16.6cm long (expandable)
Gross weight: 19.3 grams

Please note the pearls are untested and unwarranted as natural

£800-1,200

44
A MID 20TH CENTURY DIAMOND FLOWER BROOCH
The old cushion shaped diamond flowerhead to polished scrolling leaves and old cut diamond buds, diamonds approximately 2.00 carats total, unmarked
Size/dimensions: 6.2cm long
Gross weight: 12.6 grams

£1,000-1,500

45
A TWO ROW CULTURED PEARL, SAPPHIRE AND DIAMOND NECKLACE
The two strands of 8.08-8.38mm cultured pearls, to a mid 20th century scrolled clasp set with a circular cut sapphire within an old European and single cut diamond surround, unmarked
Size/dimensions: 40.5cm long
Gross weight: 81.9 grams

£800-1,200

46
AN ART DECO SAPPHIRE AND DIAMOND RING
The cushion shaped sapphire between baguette cut diamond two stone shoulders, sapphire weighing approximately 2.50 carats, unmarked
Size/dimensions: ring size N
Gross weight: 3.0 grams

Offered for sale with a Gemmological Certification Services (GCS) report, no. 5784-3335, dated 2nd September 2024, stating:
Variety: Natural Sapphire
Origin opinion: Basaltic deposits
Comment: No indications of heating

£1,000-1,500

47
A FRENCH LATE ART DECO DIAMOND PANEL BROOCH
The rectangular pierced panel set throughout with old European, single and rose cut diamonds, diamonds approximately 7.50 carats total, stamped with French poinçon
Size/dimensions: 5.8cm wide
Gross weight: 20.4 grams

£2,500-3,500



48



49



50



51



52



52



54



53

48
A PAIR OF SAPPHIRE AND DIAMOND PENDENT EARRINGS
Of chandelier design, each suspending three collet set oval cut sapphire drops in brilliant cut diamond surrounds, to a three part surmount set with oval cut sapphires in scrolling diamond set surrounds, post fittings, unmarked
Size/dimensions: 8.2cm long
Gross weight: 21.4 grams

£1,500-2,000

49
AN AQUAMARINE AND DIAMOND DRESS RING
The rectangular step cut aquamarine with canted corners, to a pavé set brilliant cut diamond gallery, diamonds approximately 1.28 carats total, to a tapered 18ct gold shank, UK hallmark
Size/dimensions: ring size L/M
Gross weight: 15.2 grams

£800-1,200

50
A PAIR OF SAPPHIRE AND DIAMOND EARRINGS
Each oval cut sapphire within an openwork scrolled frame set with brilliant cut diamonds, articulated post and clip fittings, unmarked
Size/dimensions: 3.0cm long
Gross weight: 14.4 grams

£800-1,200

51
A RUBY AND DIAMOND BUTTERFLY BROOCH
The wings set with pear shaped rubies within brilliant cut diamond surrounds, to a diamond set body with circular cut ruby eyes, unmarked
Size/dimensions: 3.7cm wide
Gross weight: 13.8 grams

£400-600

52
A PAIR OF CULTURED PEARL AND DIAMOND EARRINGS
Each button shaped cultured pearl within a radiating petal surround set with brilliant cut diamonds, post and clip fittings, unmarked
Size/dimensions: 3.0cm long
Gross weight: 20.0 grams

£1,000-1,500

53
A BI-COLOUR FANCY LINK NECKLACE
Composed of elongated hexagonal links, interspersed with oval links decorated with Meander design, to a lobster clasp, stamped 750
Size/dimensions: 60cm long
Gross weight: 53.6 grams

£1,000-1,500

54
CASSANDRA GOAD, A PAIR OF AQUAMARINE AND DIAMOND EARRINGS
Each with a brilliant cut diamond set flared cross with four pear shaped aquamarines between, diamonds approximately 0.80 carats total, post and clip fittings, unsigned
Size/dimensions: 2.0cm long
Gross weight: 15.0 grams

£700-1,000

55
A DIAMOND AND 18CT GOLD BROOCH
BIRMINGHAM 1988
Of undulating design, set with graduated old European and single cut diamonds, the principal diamond weighing 1.55 carats, partial UK hallmark, maker's mark GT&S
Size/dimensions: 4.9cm long
Gross weight: 5.3 grams

£2,000-3,000



56
CARRERA Y CARRERA, A PANTHER NECKLACE
 Composed of a series of interlocking panther design links, stamped 750 with maker's mark, numbered 131364, maker's case and guarantee card
 Size/dimensions: 46.0cm long
 Gross weight: 65.8 grams
 £1,500-2,000

57
CARRERA Y CARRERA, A PANTHER BRACELET AND EARRING SET
 The bracelet composed of a series of interlocking panther design links, the earrings en suite, each stamped 750 with maker's marks, numbered 160383 and 239029, maker's cases and guarantee cards
 Size/dimensions: 19.5cm and 1.6cm long
 Gross weight: 37.7 grams
 £1,000-1,500

58 Y
A CORAL AND DIAMOND PENDANT NECKLACE
 The coral carved with a female bust with flowers in her hair, to a diamond set base and marquise cut diamond set bale, suspended from a fancy link chain, coral signed del gatto, stamped 750, Italian control marks
 Size/dimensions: pendant 4.9cm, chain 49.0cm long
 Gross weight: 31.5 grams
 £600-800



59



61



62



60



63



65



64

59

A RED SPINEL AND DIAMOND CLUSTER RING

The cushion shaped red spinel, weighing approximately 2.45 carats, within a brilliant cut diamond surround, stamped 14k
Size/dimensions: ring size M
Gross weight: 4.5 grams

Offered for sale with a Gemmological Certification Services (GCS) report, no. 5783-2554, dated 15th May 2023, stating:

Variety: Natural red spinel
Origin: Tanzania
Comment: No indications of heating

£2,500-3,500

61

A PAIR OF DIAMOND STUD EARRINGS

Each old European cut diamond, weighing 1.89 and 1.73 carats, within a six claw mount, post fittings, unmarked
Size/dimensions: 1.0cm long
Gross weight: 3.5 grams

£7,000-10,000

60

A GEM SET PANEL BRACELET

Composed of shaped rectangular onyx panels, each centrally set with a carved and polished jadeite jade, with a brilliant cut diamond border, the oval connectors pavé set with circular cut rubies, diamonds approximately 1.80 carats total, mounted in 18ct gold, UK hallmark
Size/dimensions: 17.5cm long
Gross weight: 41.5 grams

Offered for sale with a Hong Kong Jade & Stone Laboratory report, no. SJ232225, dated 16th April 2024, stating:
Carved "fish" plaque jade was tested, bright green and white colour, transparency translucent, no resin detected
Conclusion: Natural Fei Cui - Type A

£3,000-5,000

62

A PAIR OF RUBY AND DIAMOND EARRINGS

Each pear shaped cabochon ruby in a closed back mount, within a single and old cut diamond surround, to a collet set old cut diamond surmount, clip fittings, unmarked
Size/dimensions: 2.4cm long
Gross weight: 13.1 grams

Offered for sale with a Gemmological Certification Services (GCS) report, no. 5784-3247, dated 30th August 2024, stating:
Variety: Natural ruby
Origin opinion: Madagascar
Comment: No indications of heating

£1,500-2,000

63

A GEM SET GIARDINETTO BROOCH/PENDANT

Designed as a basket of flowers set throughout with carved emeralds, circular cut rubies, sapphires and brilliant cut diamonds, diamonds approximately 0.65 carats total, stamped 750
Size/dimensions: 3.4cm long
Gross weight: 11.1 grams

£1,000-1,500

64

A PAIR OF GEM SET BEE BROOCHES

Each with pierced wings set throughout with brilliant cut diamonds, the body set with alternating lines of brilliant cut diamonds and either cabochon rubies or sapphires, with cabochon emerald or ruby eyes, each stamped 18K
Size/dimensions: 3.0cm wide
Gross weight: 12.2 grams

£600-800

65

A CULTURED PEARL, RUBY AND DIAMOND BANGLE

Composed of five graduated rows of cultured pearls, set with three flowerheads with circular cut ruby centres, within a brilliant cut diamond pavé set petal surround, diamonds approximately 2.20 carats total, unmarked
Size/dimensions: inner diameter 5.7cm
Gross weight: 78.0 grams

£2,000-3,000



66



67



68



69



70



72



71



73

66
A PAIR OF PINK TOURMALINE, DIAMOND AND ROCK CRYSTAL EARRINGS
 Each oval cut pink tourmaline within a brilliant cut diamond surround, to a carved rock crystal frame, post fittings, stamped Au750
 Size/dimensions: 2.6cm long
 Gross weight: 13.9 grams
£1,500-2,000

67
A RUBY AND DIAMOND LINE BRACELET
 Composed of a continuous row of circular cut rubies in brilliant cut diamond surrounds, diamonds pproximately 4.00 carats total, stamped 18kt
 Size/dimensions: 18.0cm long
 Gross weight: 25.8 grams
£3,000-5,000

68
A DIAMOND SINGLE STONE RING
 The old European cut diamond, weighing 2.77 carats, within a six claw setting, stamped 14K 585
 Size/dimensions: ring size P
 Gross weight: 5.9 grams
£3,000-5,000

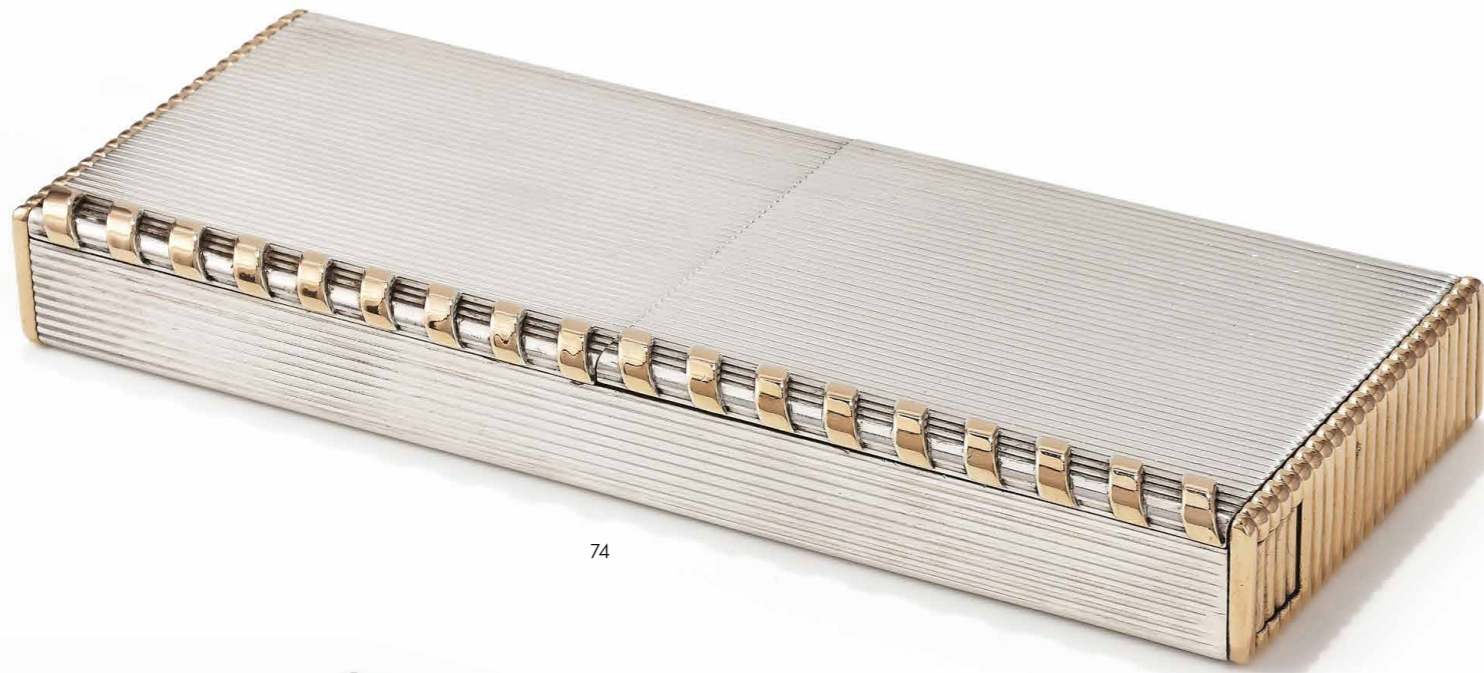
69
A PAIR OF DIAMOND PENDENT EARRINGS
 Each designed as a pear shaped openwork cluster of vari shaped rose cut diamonds in brilliant cut diamond surrounds, mounted in 14ct white gold, diamonds approximately 2.80 carats total, post fittings, UK hallmark
 Size/dimensions: 3.7cm long
 Gross weight: 8.6 grams
£1,500-2,000

70
A PAIR OF DIAMOND EARRINGS
 Each pear shaped diamond within a scrolling surround set with graduated brilliant and baguette cut diamonds, diamonds approximately 4.50 carats total, clip fittings, unmarked
 Size/dimensions: 3.1cm long
 Gross weight: 18.3 grams
£2,800-3,500

71
A PINK TOURMALINE AND DIAMOND PENDANT
 The cushion shaped pink tourmaline within a brilliant cut diamond surround, suspended from a palmier link chain, diamonds approximately 1.25 carats total, clasp stamped 750
 Size/dimensions: pendant 3.0cm, chain 41.5cm long
 Gross weight: 14.0 grams
£800-1,200

72
A PAIR OF DIAMOND HOOP EARRINGS
 Each set to the front with a line of baguette cut diamonds between brilliant cut diamond borders, diamonds approximately 3.90 carats total, stamped 18K 750
 Size/dimensions: 2.0cm long
 Gross weight: 12.0 grams
£1,000-1,500

73
A RUBY AND DIAMOND BROOCH
 Composed of two clusters, one with an oval cut ruby within a tapered baguette, marquise and brilliant cut diamond tiered cluster surround, the other with a pear shaped ruby within a scrolled and navette shaped cluster surround set with single and brilliant cut diamonds, composite, unmarked
 Size/dimensions: 3.5cm wide
 Gross weight: 13.0 grams
£800-1,200



74



77



76



75



78

74
HERMÈS, A BI-COLOURED VANITY CASE
CIRCA 1940S

The rectangular silver case with reeded decoration and gold edges and sides, push buttons in the sides opening two compartments, one fitted with a mirror, lipstick holder and powder compartment, signed Hermès Paris, numbered 68248, stamped with maker's marks and French poinçons, maker's slip case
Size/dimensions: 16.0cm long
Gross weight: 347.0 grams

£1,000-1,500

75
HERMÈS, A MID 20TH CENTURY BI-COLOURED LIPSTICK HOLDER

Of reeded cylindrical design with polished belt detail, signed Hermès Paris, numbered 4476, French poinçons, maker's slip case
Size/dimensions: 5.8cm long
Gross weight: 28.5 grams

£400-600

76
TIFFANY & CO., A GEM SET COMPACT
CIRCA 1940S

Of square outline, the lid with radiating lines and gold bow motif, set with calibré cut sapphires, opening to reveal a mirror and a powder compartment, signed Tiffany & Co., Sterling
Size/dimensions: 6.4cm long
Gross weight: 130.5 grams

£150-250

77
HERMÈS, A MID 20TH CENTURY BI-COLOURED COMPACT AND LIPSTICK HOLDER

The powder compact of square outline with gold twisted rope motifs, opening to a mirror and powder compartment, the lipstick holder of similar design, with mirror inside cover, each signed Hermès Paris, compact numbered 13575, stamped with maker's marks and French poinçons, the lipstick with slip case
Size/dimensions: compact 6.9cm, lipstick 5.5cm long
Gross weight: 187.8 grams

£500-700

78
MARIN, A SILVER CIGARETTE CASE
CIRCA 1930S

The rectangular case with engraved designs, the lid decorated with gold studs, signed Marin Paris, stamped with maker's mark and French poinçons
Size/dimensions: 9.9cm long
Gross weight: 159.2 grams

£200-300



79



81



80



82

79
BOUCHERON, A 'MARGUERITE' LIGHTER
CIRCA 1960S

Of textured basketweave design with flowerhead motifs throughout, with polished oval terminals, signed Boucheron and numbered 65515, stamped with maker's mark and French poinçon
Size/dimensions: 7.4cm long
Gross weight: 77.4 grams

£600-800

81
HERMÈS, A TORTOISESHELL CIGARETTE HOLDER

The tapered polished terminal with banded decoration, to a tortoiseshell mouthpiece, signed Hermès, stamped with French poinçon, leather slip case
Size/dimensions: 8.8cm long
Gross weight: 5.8 grams

£200-300

80
ASPREY & CO., AN 18CT GOLD MONEY CLIP
LONDON 1993

Of brick link design, the reverse engraved with initials RJGS, signed Asprey, UK hallmark, maker's mark
Size/dimensions: 3.8cm long
Gross weight: 38.6 grams

£700-1,000

82
BOUCHERON, A RUBY SET LIGHTER

The rectangular holder overlaid with an openwork floral design accented with rubies, signed Boucheron Paris, stamped with French poinçon and Or Argent, signed suede slip case
Size/dimensions: 5.3cm long
Gross weight: 42.9 grams

£250-350

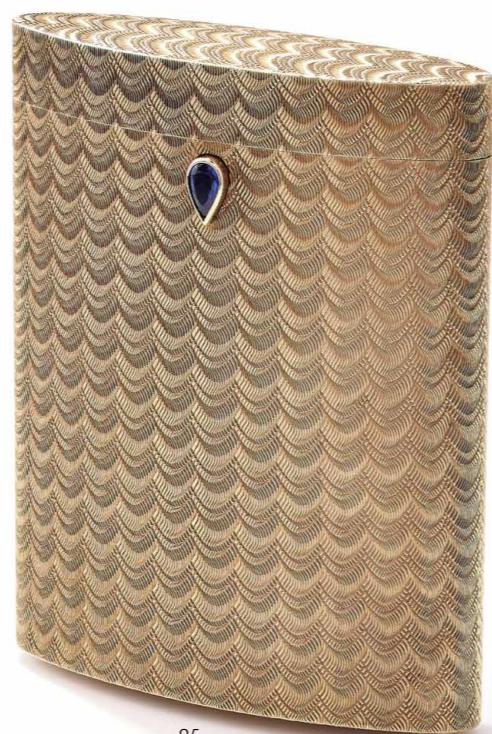




83



84



85



86

83
CARTIER, A LIGHTER
Of stylised basket weave design, with polished terminals of oval outline, signed Cartier Paris, indistinct numbering, French poinçon
Size/dimensions: 7.0cm long
Gross weight: 77.2 grams

£400-600

84
PIERRE LEFEBVRE, AN ENAMEL CIGAR CUTTER
The polished circular cutter decorated with blue enamel concentric circles, steel blade, stamped with maker's mark and French poinçon
Size/dimensions: 3.8cm diameter
Gross weight: 21.9 grams

£300-500

85
DUNHILL, A 9 CARAT GOLD CIGARETTE CASE
LONDON 1961
Of oval cross section with engine turned swag decoration and pear shaped sapphire thumb piece, signed Dunhill London, UK hallmark
Size/dimensions: 8.5cm long
Gross weight: 82.8 grams

£1,500-2,000

86
DAVID THOMAS, AN 18CT GOLD COMPACT, PILL BOX AND PERFUME HOLDER
LONDON 1995
Each of textured bark design, compact with mirror and inside lid, engraved Y.K.S., XMAS 1994, UK hallmarks, maker's marks DAT, compact with slip case; together with a gilt cigarette case of similar design, unmarked
Size/dimensions: compact 6.8cm, pill box 4.3cm, perfume holder 6.2cm; cigarette case 9.0cm long
Gross weight: 247.5 grams (hallmarked items only)

£3,000-5,000



87



88



91



89



90



92

87
A SAPPHIRE AND DIAMOND BROOCH
 CIRCA 1966
 Of abstract design, composed of textured drop shaped 18ct gold links interspersed with white gold links set with brilliant cut diamonds and circular cut sapphires, UK import mark, sponsor's mark JWBl
 Size/dimensions: 6.0cm long
 Gross weight: 11.8 grams

£300-500

89
A PAIR OF LAPIS LAZULI CUFFLINKS
 Each lapis lazuli disc within a beaded border, to a swivel bar with oval panel terminals with similar border, unmarked
 Size/dimensions: 2.1cm wide
 Gross weight: 25.0 grams

£600-800

88
A MODERNIST LAPIS LAZULI BROOCH
 CIRCA 1970S
 The pear shaped cabochon lapis lazuli within a radiating openwork surround of polished batons and textured panels, twin prong fitting, unmarked
 Size/dimensions: 5.5cm long
 Gross weight: 19.2 grams

£1,000-1,500

90
A PAIR OF LAPIS LAZULI EARRINGS
 Each cabochon lapis lazuli within a reeded mount, post and clip fittings, stamped 750, Italian marks
 Size/dimensions: 2.6cm long
 Gross weight: 22.6 grams

£700-1,000

91
GILBERT ALBERT, AN 18CT GOLD BANGLE AND BROOCH
 CIRCA 1972
 Of bi-coloured gold twisted, abstract openwork design, each signed Gilbert Albert, maker's mark, bangle numbered 2814, brooch 2598, stamped 750, UK import mark
 Size/dimensions: bangle inner diameter 5.6cm, brooch 5.1cm wide
 Gross weight: 77.6 grams

£3,000-5,000

92
AN AQUAMARINE, BLUE TOPAZ AND DIAMOND BROOCH AND EARRING SET
 LONDON 1964
 Each of abstract design set with circular cut aquamarines and blue topaz, accented with old European and brilliant cut diamonds, between twisted abstract 18ct gold tendrils, earrings with later post fittings, unmarked, brooch with UK hallmark for 18ct gold
 Size/dimensions: 6.8cm and 2.9cm long
 Gross weight: 45.9 grams

£1,200-1,500



93



95



94



96



97



99



98

93

GRIMA, A PAIR OF DIAMOND SET EARRINGS

Each textured hoop with undulating edges inset with three brilliant cut diamonds, diamonds approximately 0.15 carats total, post fittings, signed Grima, stamped 750, maker's pouch and sales receipt dated 1986

Size/dimensions: 1.7cm long

Gross weight: 6.0 grams

£400-600

94

JOHN DONALD, AN 18CT GOLD BAND RING

LONDON 1976

Of openwork cube design, maker's mark JAD, UK hallmark

Size/dimensions: ring size J

Gross weight: 5.6 grams

£700-1,000

97

JOHN DONALD, A TURQUOISE AND DIAMOND RING

LONDON 1965

The circular cabochon turquoise within an 18ct white gold openwork concave surround of cube design, with a single cut diamond border, maker's mark JAD, UK hallmark

Size/dimensions: ring size O

Gross weight: 9.7 grams

£1,500-2,000

98

JOHN DONALD, A CITRINE AND DIAMOND BRACELET

LONDON 1973

Designed as a graduated series of marquise cut citrines within 18ct white gold open beadwork surrounds with marquise and brilliant cut diamond accents, maker's mark JAD, UK hallmark

Size/dimensions: 17.1cm long

Gross weight: 59.1 grams

£4,000-6,000

95

A TOPAZ PENDANT/BROOCH

LONDON 1964

Of abstract design, centrally set with an uncut orange topaz crystal, within an 18ct gold openwork mount, UK hallmarks, maker's mark bq

Size/dimensions: 7.8cm long

Gross weight: 36.6 grams

£800-1,200

96

DAVID THOMAS, A PAIR OF 18CT GOLD CUFFLINKS

LONDON 1986

Each disc of basket-weave design, to octagonal T-Bar terminals, maker's mark DAT, UK hallmark

Size/dimensions: 2.2cm wide

Gross weight: 16.8 grams

£400-600

99

GRIMA, A PAIR OF 18CT WHITE GOLD EARRINGS

LONDON 1978

Each designed as a twisted 18ct white gold wire hoop, post fittings, maker's mark AG Ltd, London hallmark

Size/dimensions: 2.5cm long

Gross weight: 7.3 grams

£300-500



100

100
GIO POMODORO, A RUBY SET BROOCH
CIRCA 1962
Of textured abstract design, with pierced centre, accented with circular cut rubies, signed Gio Pomodoro '62
Size/dimensions: 5.7cm long
Gross weight: 42.1 grams

£4,000-6,000



101

101
SVEN BOLTENSTERN, A PERIDOT AND DIAMOND BANGLE
CIRCA 1970S
The hinged, undulating front set with a cluster of oval cabochon peridot and brilliant cut diamonds, to a textured fan shaped border, maker's mark SB, Dutch import mark 750
Size/dimensions: inner diameter 6.0cm
Gross weight: 60.8 grams

£3,600-4,000

102
AN AMETHYST LONGCHAIN
CIRCA 1970
Composed of hexagonal amethyst batons between hammered cable and fancy link chain connections, unmarked
Size/dimensions: 94.0cm long
Gross weight: 59.1 grams

£2,500-3,500



102



103



104



105



106



107



108



109



111

103
A GEM SET NECKLACE
 Spectacle set with circular, oval and cushion shaped faceted citrine, amethyst, peridot and blue topaz, unmarked
 Size/dimensions: 65.0cm long
 Gross weight: 65.7 grams
 £2,500-3,500

104
A PURPLE SPINEL AND DIAMOND CLUSTER RING
 The cushion shaped purple spinel within a brilliant cut diamond surround with reeded corners, diamonds approximately 1.00 carat total, stamped 14K
 Size/dimensions: ring size M
 Gross weight: 6.5 grams
 £2,200-2,800

105
A FIRE OPAL AND DIAMOND DRESS RING
 The fancy cushion cut fire opal within a brilliant cut diamond surround, mounted on a tapered bombé 18ct gold band inset with brilliant cut diamonds, diamonds approximately 0.50 carats total, partial UK hallmark
 Size/dimensions: ring size O
 Gross weight: 11.9 grams
 £1,500-2,000

106
A PAIR OF GEM SET EARRINGS
 Each set with a carved ruby within a surround of vari-cut amethyst, citrine, garnet, aquamarine and emerald, brilliant cut diamond accents between, stamped 750 18k
 Size/dimensions: 2.3cm long
 Gross weight: 16.0 grams
 £400-600

107
A PAIR OF PINK SAPPHIRE AND DIAMOND EARRINGS
 Each brilliant cut diamond half hoop suspending a series of diamond set circlets and single stones suspending pear shaped pink sapphire and brilliant cut diamond cluster drops, post fittings, unmarked
 Size/dimensions: 7.0cm long
 Gross weight: 11.6 grams
 £2,000-3,000

108
A PAIR OF AMETHYST AND DIAMOND EARRINGS
 Of girandole design, each oval cut amethyst centre in a single cut diamond surround, suspending three similarly set pear shaped drops, post fittings, earrings unmarked, butterflies stamped 15k
 Size/dimensions: 5.6cm long
 Gross weight: 15.8 grams
 £500-700

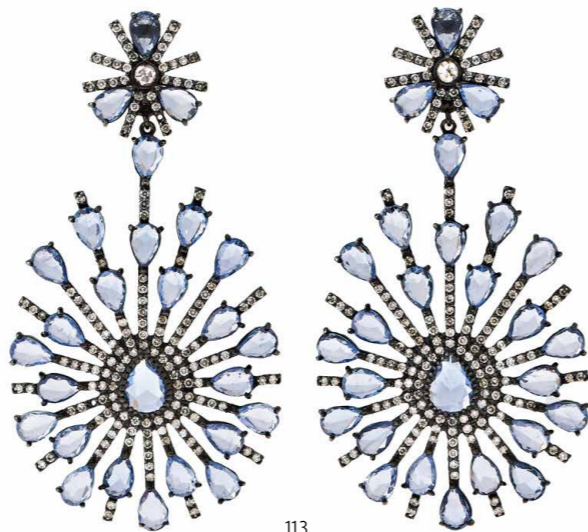
109
CHIMENTO, A BI-COLOUR FANCY LINK NECKLACE
 Of brick link design, applied with reeded bands, signed Chimento, stamped with Italian control marks and 750
 Size/dimensions: 45.0cm long
 Gross weight: 80.1 grams
 £2,000-3,000

110 (NO LOT)

111
A COLOURED SAPPHIRE AND DIAMOND DRESS RING
 Designed as an articulated cluster of vari shaped rose cut pink, orange or light blue sapphires in brilliant cut diamond surrounds, mounted in 18ct rose gold, UK hallmark
 Size/dimensions: ring size N
 Gross weight: 4.0 grams
 £600-800



112



113



116



118



114



115



117

112
CARTIER, A 'TRINITY' BANGLE
Composed of three interlocking tri coloured bangles, signed Cartier, numbered LR541, maker's mark, French poinçon, maker's case and certificate of authenticity
Size/dimensions: inner diameter 6.3cm
Gross weight: 62.8 grams

£3,000-5,000

113
A PAIR OF SAPPHIRE AND DIAMOND PENDENT EARRINGS
Of radiating design, set throughout with pear shaped rose cut sapphires and brilliant cut diamonds, in blackened mount, stamped 18K
Size/dimensions: 6.9cm long
Gross weight: 27.8 grams

£2,000-3,000

114
A MOONSTONE AND DIAMOND BRACELET
Composed of a graduated row of faceted oval cabochon moonstones in rose cut diamond surrounds, clasp stamped 14c
Size/dimensions: 19.5cm long
Gross weight: 28.0 grams

£800-1,200

115
KIMBERLY MCDONALD, FOUR GEODE AND DIAMOND BRACELETS
Each set with an agate geode in a brilliant cut diamond surround, on a macramé cord strap, diamonds approximately 1.25 carats total, each signed KMD, stamped 18K
Size/dimensions: adjustable straps
Gross weight: 17.7 grams

£700-1,000

116
A DIAMOND SET DRESS RING/PENDANT
Realistically modelled as a rose, pavé set throughout with single cut diamonds, diamonds approximately 4.00 carats total, detachable shank, stamped 750 18K
Size/dimensions: ring size M
Gross weight: 29.8 grams

£1,500-2,000

117
A CULTURED PEARL AND GEM SET NECKLACE
The single strand of 12.2-11.2mm Tahitian cultured pearls centring on a cushion shaped kunzite within an intertwined band surround pavé set with circular cut sapphires and brilliant cut diamonds, mounted in 18ct white gold, to a reeded bead clasp, UK hallmark
Size/dimensions: 40.0cm long
Gross weight: 77.2 grams

£2,500-3,500

118
A PAIR OF TANZANITE, SAPPHIRE AND DIAMOND EARRINGS
Each oval cabochon tanzanite within a single cut diamond surround, to a vari shaped rose cut sapphire and pink sapphire frame with diamond accents, clip fittings, unmarked
Size/dimensions: 3.0cm long
Gross weight: 17.4 grams

£1,200-1,800



119



121



122



123



124



125



126



120

119

STEPHEN WEBSTER, A DIAMOND BANGLE

The oval openwork front of abstract openwork design, set throughout with brilliant cut diamonds, approximately 4.00 carats total, to engraved bifurcated shoulders, maker's mark SW, stamped 18K 750
Size/dimensions: inner diameter 5.2cm
Gross weight: 51.9 grams

£1,500-2,000

120

STEPHEN WEBSTER, AN EMERALD BRACELET

LONDON 2013
Composed of navette shaped links within an openwork frame, pavé set throughout with circular cut emeralds, mounted in blackened gold and 18ct white gold, maker's mark SW, UK hallmark
Size/dimensions: 15.8cm long
Gross weight: 29.1 grams

£1,500-2,000

121

A DIAMOND THREE STONE RING

Set with three graduated brilliant cut diamonds, centre weighing 1.79 carats, mounted in 18ct white gold, partial UK hallmark
Size/dimensions: ring size P
Gross weight: 7.8 grams

£2,000-3,000

122

CARTIER, 'MASSAI PANTHÈRE', A DIAMOND AND GEM SET RING

The panther's head pavé set with brilliant cut diamonds, pear shaped emerald eyes and a shaped onyx nose, mounted in white gold, signed Cartier, numbered 57213F, maker's mark, French poinçon, maker's case and certificate of authenticity
Size/dimensions: ring size Q/R
Gross weight: 16.6 grams

£6,000-8,000

123

CARTIER, A DIAMOND 'LOVE' RING

The 18ct white gold band alternately set with brilliant cut diamonds and screwhead motifs, signed Cartier, numbered NC6333, Swiss and European Convention marks
Size/dimensions: ring size L
Gross weight: 8.9 grams

£600-800

124

CARTIER, A DIAMOND 'LOVE' RING

The 18ct white gold band inset with six brilliant cut diamonds, hoop engraved I Love You, signed Cartier, numbered OC3548, Swiss and European Convention mark
Size/dimensions: ring size M
Gross weight: 8.3 grams

£700-1,000

125

AN EMERALD AND DIAMOND RING

The rectangular cut emerald with canted corners in a four double claw setting, between collet set triangular cut diamond shoulders, emerald weighing approximately 16.30 carats, unmarked
Size/dimensions: ring size O
Gross weight: 11.1 grams

£15,000-20,000

126

NICK KELLETT, A DIAMOND SET BANGLE

The hinged 18ct white gold bangle of textured finish, inset on each side with a graduated line of five brilliant cut diamonds, diamonds approximately 0.75 carat total, maker's mark, UK hallmark, maker's case
Size/dimensions: inner width 6.4cm
Gross weight: 44.0 grams

£1,200-1,800



128



127



129



130



131



132



133

127
DAVID MORRIS, A PAIR OF CULTURED MABÉ PEARL AND DIAMOND EARRINGS LONDON 1989
Each 13.1 - 13.2mm cultured mabé pearl within an 18ct gold weave design mount accented with brilliant cut diamonds, approximately 0.24 carats total, maker's mark DM, UK hallmark
Size/dimensions: 2.1cm long
Gross weight: 26.5 grams

£800-1,200

128
ATTRIBUTED TO DAVID MORRIS, A CULTURED PEARL AND DIAMOND NECKLACE
Composed of interlocking polished and brilliant cut diamond set links, centred by 6.1 - 6.2mm cultured pearls, diamonds approximately 2.00 carats total, unmarked, in a David Morris pouch
Size/dimensions: 36.0cm long
Gross weight: 134.4 grams

£3,000-5,000

129
AN EMERALD SINGLE STONE PENDANT
The square step cut emerald with canted corners within a four claw mount to a polished bale, emerald weighing approximately 19.0 carats, unmarked
Size/dimensions: 2.2cm long
Gross weight: 7.7 grams

Offered for sale with a C. Dunaigre gemstone report, no. CDC 2106383, dated 1st July 2021, stating:
Variety: Emerald
Origin opinion: Colombia

£8,000-12,000

130
A PAIR OF EMERALD AND DIAMOND EARRINGS
Each pear shaped emerald drop to a rectangular cut emerald surmount and brilliant cut diamond connector, diamonds approximately 0.50 carats total, post fittings, unmarked
Size/dimensions: 2.8cm long
Gross weight: 5.8 grams

£3,000-4,000

131
A TANZANITE AND EMERALD THREE STONE RING
The oval cabochon tanzanite collet set between cabochon emerald shoulders, mounted in 18ct brushed gold, UK hallmark
Size/dimensions: ring size N
Gross weight: 5.5 grams

£500-700

132
A CARVED EMERALD AND GEM SET BROOCH
The fluted cabochon emerald within an openwork quatrefoil surround pavé set with brilliant cut diamonds, within a calibré cut sapphire border, unmarked
Size/dimensions: 5.6cm long
Gross weight: 17.2 grams

£3,000-5,000

133
DEAKIN & FRANCIS, AN EMERALD CLASP, BROOCH AND EARRINGS BIRMINGHAM 1991
The brooch set with three cabochon emeralds in closed back collet settings, mounted on an 18ct gold bar brooch, the earrings en suite, post fittings, with detachable baroque cultured pearl drops; the necklace with a similarly set three stone clasp, to a baroque imitation pearl necklace, each with maker's mark D & F, UK hallmarks
Size/dimensions: brooch 6.3cm, earrings 3.6cm, necklace 47.5cm long
Gross weight: 50.5 grams (excluding imitation pearls)

£1,500-2,500



134

134 AN EARLY 20TH CENTURY AND LATER HARDSTONE AND GOLD EGG BRACELET
The belcher link bracelet suspending various gold and hardstone eggs, to include an early 20th century diamond and ruby egg with rubbed gold mark; an early 20th century gold egg with a rose cut diamond accent, unmarked; a nephrite and faceted rock crystal polished egg, with gold suspensory loop stamped with French 1839-1919 little guarantee mark; a lapis lazuli egg with Russian 56 zolotnik mark, maker's mark possibly AK; together with a polished chrysoprase egg; a rose quartz egg; an amethyst egg; a polished nephrite egg; and others
Size/dimensions: bracelet 19.5cm long
Gross weight: 39.6 grams

£1,000-1,500

135 A NATURAL PEARL NECKLACE
The graduated strand of 2.15-5.80mm pearls, to a navette shaped lapis lazuli and old cut diamond clasp, unmarked
Size/dimensions: 63.0cm long
Gross weight: 12.2 grams

Offered for sale with a Gemmological Certification Services (GCS) report, no. 5784-3774, dated 30th September 2024, stating:
Variety: Natural Nacreous Pearl
Environment: Saltwater
Comment: Contains 1 beaded cultured pearl and seed pearls

£700-1,000

£700-1,000

£700-1,000

£1,000-1,500

£1,000-1,500



136

136 AN EARLY 20TH CENTURY SAPPHIRE AND DIAMOND BANGLE
Of hinged crossover design, composed of a circular cut sapphire and old cut diamond cluster terminal, opposing an old European cut diamond cluster terminal, each to curved bifurcated old cut diamond shoulders, diamonds approximately 4.00 carats total, unmarked
Size/dimensions: inner diameter 5.7cm
Gross weight: 24.2 grams

£2,000-4,000

£2,000-4,000

£2,000-4,000

£2,000-4,000



138

137 AN EARLY 20TH CENTURY FANCY LINK LONG CHAIN
Composed of openwork navette shaped links with scrolling acanthus leaf motifs in reeded frames, unmarked
Size/dimensions: 82.5cm long
Gross weight: 75.8 grams

£1,500-2,000

139 A LATE 19TH CENTURY OPAL AND DIAMOND FIVE STONE RING
Composed of five graduated circular cabochon opals within a rose cut diamond surround, unmarked
Size/dimensions: ring size L
Gross weight: 4.6 grams

£700-900

£700-900

£700-900

£700-900

139

138 A RUSSIAN EARLY 20TH CENTURY NATURAL PEARL AND DIAMOND CLUSTER RING
The 7.73 x 7.87mm natural pearl within a surround of old European cut diamonds, and diamond single stone shoulders, diamonds approximately 1.50 carats total, mounted in silver and gold, with 56 standard kokoshnik mark
Size/dimensions: ring size P
Gross weight: 6.8 grams

£1,200-1,800

140 AN EDWARDIAN PERIDOT, ENAMEL AND HALF PEARL BROOCH
CIRCA 1900
The heart shaped peridot suspended from a seed pearl surmount between red enamel and split pearl wings, unmarked
Size/dimensions: 4.5cm wide
Gross weight: 6.7 grams

£300-500

£300-500

£300-500

£300-500

137

141 CARLO GIULIANO, A MOONSTONE AND ENAMEL BROOCH
CIRCA 1900
Set with three cabochon moonstones within a tapered black and white enamel frame with dot decoration, accented with orange guilloché enamel beads, maker's mark C.G
Size/dimensions: 5.6cm long
Gross weight: 9.5 grams

£700-1,000

£700-1,000

£700-1,000



142

142
A LATE 19TH CENTURY DIAMOND SUNBURST BROOCH
 CIRCA 1880
 The old European cut diamond, weighing 2.47 carats, within a similarly cut diamond cluster, to a tapered and undulating ray surround, mounted in silver and gold, unmarked, detachable brooch fitting
 Size/dimensions: 4.8cm long
 Gross weight: 17.5 grams

£4,000-6,000



145

143
A LATE 19TH CENTURY DIAMOND STAR BROOCH/PENDANT
 CIRCA 1890-1900
 The old European cut diamond in a six ray surround alternating with fleur-de-lys motifs, set throughout with old European and rose cut diamonds, mounted in silver and gold, later detachable brooch fitting, pendant fitting, unmarked
 Size/dimensions: 3.1cm long
 Gross weight: 7.5 grams

£800-1,200



143

144
A LATE 19TH CENTURY DIAMOND TARGET CLUSTER BROOCH
 The old European cut diamond within a tiered surround of three old European cut diamond circlets, mounted in silver and gold, diamonds approximately 4.20 carats total, unmarked
 Size/dimensions: 2.8cm long
 Gross weight: 6.7 grams

£2,000-3,000



144

145
A LATE 19TH CENTURY NATURAL PEARL AND DIAMOND JEWEL
 The central old European cut diamond quatrefoil cluster within an openwork surround of interlocking scroll with fleur-de-lys quarters, set throughout with old European and old mine cut diamonds, suspending three natural pearl drops, measuring approximately 10.2 x 9.1 x 10.5mm, 11.6 x 11.0 x 11.5mm and 9.6 x 8.2 x 10.5mm, with rose cut diamond caps and old European cut diamond surmounts, composite, later mounted as a clasp, on a four strand cultured pearl necklace

Size/dimensions: jewel 4.0cm wide
 Gross weight: 25.2 grams

Offered for sale with a Gemmological Certification Services (GCS) report, no. 5784-2540, dated 21st May 2024, stating:
 Variety: Natural Nacreous Pearl
 Environment: Saltwater

£7,000-10,000



147



146



148

146
AN AQUAMARINE AND DIAMOND DRESS RING

The rectangular step cut aquamarine with canted corners, within an old European cut diamond surround with French cut diamond quarters, between old cut diamond shoulders, diamonds approximately 1.70 carats total, stamped 18ct

Size/dimensions: ring size P
Gross weight: 7.2 grams

£1,500-2,000

147
FRED LEIGHTON, A DIAMOND NECKLACE

Each 18ct white gold openwork oval plaque with floral and foliate wirework motifs, set throughout with brilliant cut diamonds, with square cut diamond accents, diamonds approximately 8.00 carats total, signed Fred Leighton, later London hallmark

Size/dimensions: 43.0cm long
Gross weight: 34.8 grams

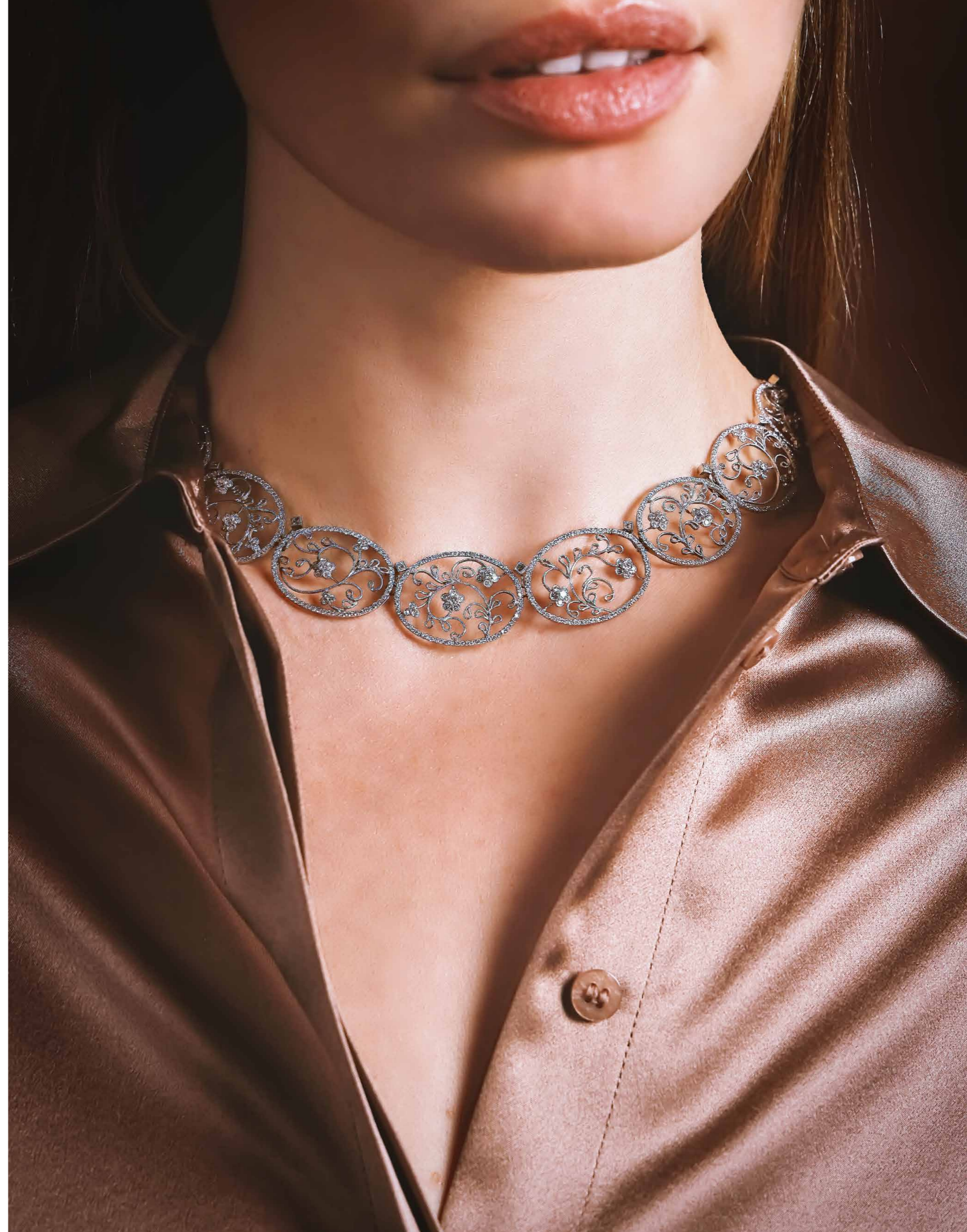
£4,000-6,000

148
A PAIR OF CULTURED PEARL, DIAMOND AND ROCK CRYSTAL EARRINGS

Each circular carved frosted rock crystal plaque set with a baroque cultured pearl of grey tint, with a brilliant cut diamond border and cultured pearl surmount, diamonds approximately 0.24 carats total, mounted in platinum, post fittings, UK hallmark

Size/dimensions: 3.0cm long
Gross weight: 14.5 grams

£1,000-1,500





152



149



151



150



154



155



153

149
AN AQUAMARINE DRESS RING
 The step cut aquamarine with canted corners flanked by rows of brilliant cut diamonds, to shaped hoop shoulders and polished shank, the aquamarine estimated to weigh 19.35 carats, diamonds approximately 0.40 carats total, unmarked
 Size/dimensions: ring size Q 1/2
 Gross weight: 14.5 grams
 £1,500-2,000

150
A DIAMOND LINE BRACELET
 Composed of a continuous line of brilliant cut diamonds in raised four claw settings, diamonds approximately 3.70 carats total, stamped 750
 Size/dimensions: 17.0cm long
 Gross weight: 20.2 grams
 £2,000-3,000

151
A DIAMOND ETERNITY RING
 Channel set with a continuous row of brilliant cut diamonds, diamonds approximately 2.70 carats total, unmarked
 Size/dimensions: ring size I/J (sizing beads)
 Gross weight: 5.6 grams
 £700-1,000

152
A DIAMOND HEART PENDANT
 The heart shaped plaque pavé set with brilliant cut diamonds, to a diamond bale, suspended from a cable link chain, chain stamped 750, pendant unmarked
 Size/dimensions: pendant 2.5cm, chain 50.0cm long
 Gross weight: 11.4 grams
 £400-600

153
BOODLES, A DIAMOND SET 'BLOSSOM' BRACELET
 The cable link chain set with polished or brilliant-cut diamond set flower heads, alternating with spectacle set brilliant cut diamonds, diamonds approximately 0.80 carats total, signed Boodles, number rubbed, maker's case
 Size/dimensions: 18.5cm long
 Gross weight: 12.8 grams
 £2,000-3,000

154
BOODLES, A DIAMOND SET 'BLOSSOM' LONG CHAIN
 The cable link chain set with polished or brilliant cut diamond set flower heads, suspending a similarly designed pendant, mounted in 18 carat white gold, diamonds approximately 0.85 carats total, signed Boodles, numbered 0735N0174, SXXX .87, maker's mark, London hallmark, maker's case and card box
 Size/dimensions: 108.0cm long
 Gross weight: 36.3 grams
 £6,000-8,000

155
AN AQUAMARINE AND DIAMOND DRESS RING
 The cushion shaped aquamarine, within a brilliant cut diamond surround, between triangular cut aquamarine and brilliant cut diamond cluster shoulders, diamonds approximately 0.33 carats total, stamped Au750
 Size/dimensions: ring size O
 Gross weight: 10.8 grams
 £2,000-3,000



156

156
A RUSSIAN EARLY 20TH CENTURY AQUAMARINE AND
DIAMOND PENDANT
CIRCA 1900

The pear shaped aquamarine within a rose cut diamond surround, to an old European and rose cut diamond bow surmount and later cable link chain, composite, drop with scratched inventory number 87205, chain stamped 750

Size/dimensions: pendant 4.3cm, chain 46.0cm long
Gross weight: 16.9 grams

This pendant was featured on the BBC Antiques Roadshow. It was left to the present owner by her mother, who had been gifted it by a friend. Her friend had escaped Russia in 1918 at the age of 12, with her jewellery sewn into the hem of her dress. The scratched inventory number is consistent with the numbering used by Fabergé, however no other marks are present to allow attribution of this piece.

£4,000-6,000



157

157
AN ART DECO AQUAMARINE AND DIAMOND DRESS RING
CIRCA 1925

The cushion shaped aquamarine between scrolled openwork shoulders set with single cut diamonds, unmarked

Size/dimensions: ring size V
Gross weight: 9.8 grams

£2,000-3,000



158

158
A BELLE EPOQUE DIAMOND BROOCH
CIRCA 1910

Of entrelac-de-ruban and wreath design, set throughout with old European and rose cut diamonds, diamonds approximately 4.50 carats total, later detachable brooch fitting, unmarked

Size/dimensions: 4.3cm wide
Gross weight: 12.7 grams

Illustrated in David Bennett and Daniela Mascetti 'Understanding Jewellery', revised edition 2003, p. 280.

£2,500-3,000



160

159
A PEARL AND DIAMOND BAR BROOCH

The terminals set with either an old European cut diamond, weighing 1.27 carats, or a 6.8mm pearl, to an old cut diamond bar with engraved gallery, composite, unmarked
Size/dimensions: 6.3cm long
Gross weight: 6.2 grams

Please note that the pearl is untested and unwarranted as natural

£600-800

160
A BELLE EPOQUE DIAMOND AND SEED
PEARL SAUTOIR
CIRCA 1910

The knife edge wire rosette shaped pendant collet set with old European cut diamonds, with vacant pearl mounts, to a diamond set circlet surmount, suspended from a wired seed pearl necklace, with diamond set clasp
Size/dimensions: necklace 39.0cm, pendant 6.0cm long
Gross weight: 22.5 grams

£1,200-1,800



159

161
AN EARLY 20TH CENTURY NATURAL
PEARL AND DIAMOND NECKLACE

Composed of a graduated row of 5.80-3.30mm pearls, to a millegrain set old European and rose cut diamond openwork clasp, unmarked
Size/dimensions: 47.0cm long
Gross weight: 10.6 grams

Offered for sale with a Gemmological Certification Services (GCS) report, no.5784-3730, dated 23rd September 2024, stating: Variety: Natural Nacreous Pearl Environment: Saltwater

£700-1,000



162

162

AN EARLY 20TH CENTURY DIAMOND AND CULTURED PEARL SWAG NECKLACE

Composed of seven mabé cultured pearls set within old European cut diamond and cultured pearl clusters on filigree and ropetwist frames, between alternating swags of cultured pearl strands and filigree links set with old cut diamonds, suspending a similarly set scrolling filigree pendant, terminating in cultured pearl drops with rose cut diamond caps, composite, cased by C.A. Barrington, Diamond Mounter, 30 Alfred Place, SW7

Size/dimensions: 44.0cm long

Gross weight: 148.5 grams

Provenance:

The necklace was made for The Hon. Claude Yorke (1872 - 1940) as a gift for his wife, The Hon. Mrs Claude Yorke (nee. Fay Zarifi - d. 1928). Claude Yorke was an architect, and had worked in Cairo at the turn of the twentieth century between 1897 and 1907. He married Fay Zarifi in 1914, and family repute suggests he would have had an influence in the design of the necklace.

Thence by direct descent.

£8,000-12,000





163



164



165



166



167

163
TIFFANY & CO., A RUBY AND DIAMOND BROOCH
CIRCA 1950
Of stylised snowflake design, the central brilliant cut diamond and circular cut rubies, within a radiating surround of beaded bars and diamond and ruby lines, diamonds approximately 0.40 carats total, signed Tiffany, stamped 14K
Size/dimensions: 3.8cm long
Gross weight: 14.5 grams

£2,500-3,500

164
TIFFANY & CO., A BROOCH
Composed four interlocking polished hoops, signed Tiffany & Co., stamped 14K
Size/dimensions: 3.5cm long
Gross weight: 13.5 grams

£400-600

165
FRASCAROLO, AN ENAMEL AND DIAMOND NOVELTY TRAVEL CLOCK
1960S
Designed as a hippo, decorated with red enamel and diamond eyes, opening to reveal a fold up circular watch case, with Arabic 12 and 6 and tapered baton hour markers, dial signed Burmid, Incabloc, box with maker's mark FC, stamped 750, 18k
Size/dimensions: 2.5cm high, 4.2cm long
Gross weight: 58.1 grams

£2,000-3,000

166
A PAIR OF FRENCH DIAMOND EARRINGS
CIRCA 1950
Each with a pavé set old and single cut diamond dome within a polished scrolled ribbon, post and clip fittings, French poinçon, maker's mark
Size/dimensions: 3.0cm long
Gross weight: 13.0 grams

£800-1,200

167
A DIAMOND SET BROOCH
Of stylised textured foliate design, centrally set with a brilliant cut diamond cluster, diamonds approximately 0.20 carats total, unmarked
Size/dimensions: 6.8cm long
Gross weight: 28.6 grams

£600-800



168

168
CARTIER, A GEM SET BASKET BROOCH
CIRCA 1960

The ropetwist and polished rod basket with brilliant cut diamond accent, issuing a spray of circular cut emeralds, sapphires and rubies and brilliant cut diamonds, signed Cartier Paris, numbered 016103, stamped with maker's mark and French poinçon
Size/dimensions: 3.2cm long
Gross weight: 15.5 grams

£1,500-2,000



169

169
CARTIER, A STAG'S TOOTH AND ENAMEL STOCK PIN AND A STOCK PIN

The first mounted with stag's teeth, held by red and blue enamel bands, signed Cartier and numbered 012101, stamped with French poinçon; the second of polished safety pin design, signed Cartier, indistinctly numbered, stamped with French poinçons
Size/dimensions: first 5.9cm long, second 5.0cm long
Gross weight: 13.3 grams

£500-700

170
BOUCHERON, A LADY'S 18CT GOLD BRACELET WATCH
WATCH

CIRCA 1965
The navette shaped textured gold dial with baton hour markers, within a bamboo design bezel, to a similarly designed link bracelet, case back and bracelet signed Boucheron Paris, maker's marks, case number 73766, bracelet number 1203255, stamped with French poinçons and Swiss assay marks for 18ct gold, manual wind movement
Size/dimensions: case 1.8cm wide, watch 18.0cm long
Gross weight: 65.7 grams

£3,000-5,000



170

171
GEORGES LENFANT, AN ENAMEL NOVELTY TRAVEL CLOCK
CIRCA 1965

Realistically modelled as a chestnut, decorated with maroon enamel, opening to reveal a circular watch case, with Arabic gilt quartes and baton hour markers, dial signed Incabloc, maker's mark GL, French poinçon
Size/dimensions: 3.0cm long
Gross weight: 39.5 grams

£1,500-2,000



171

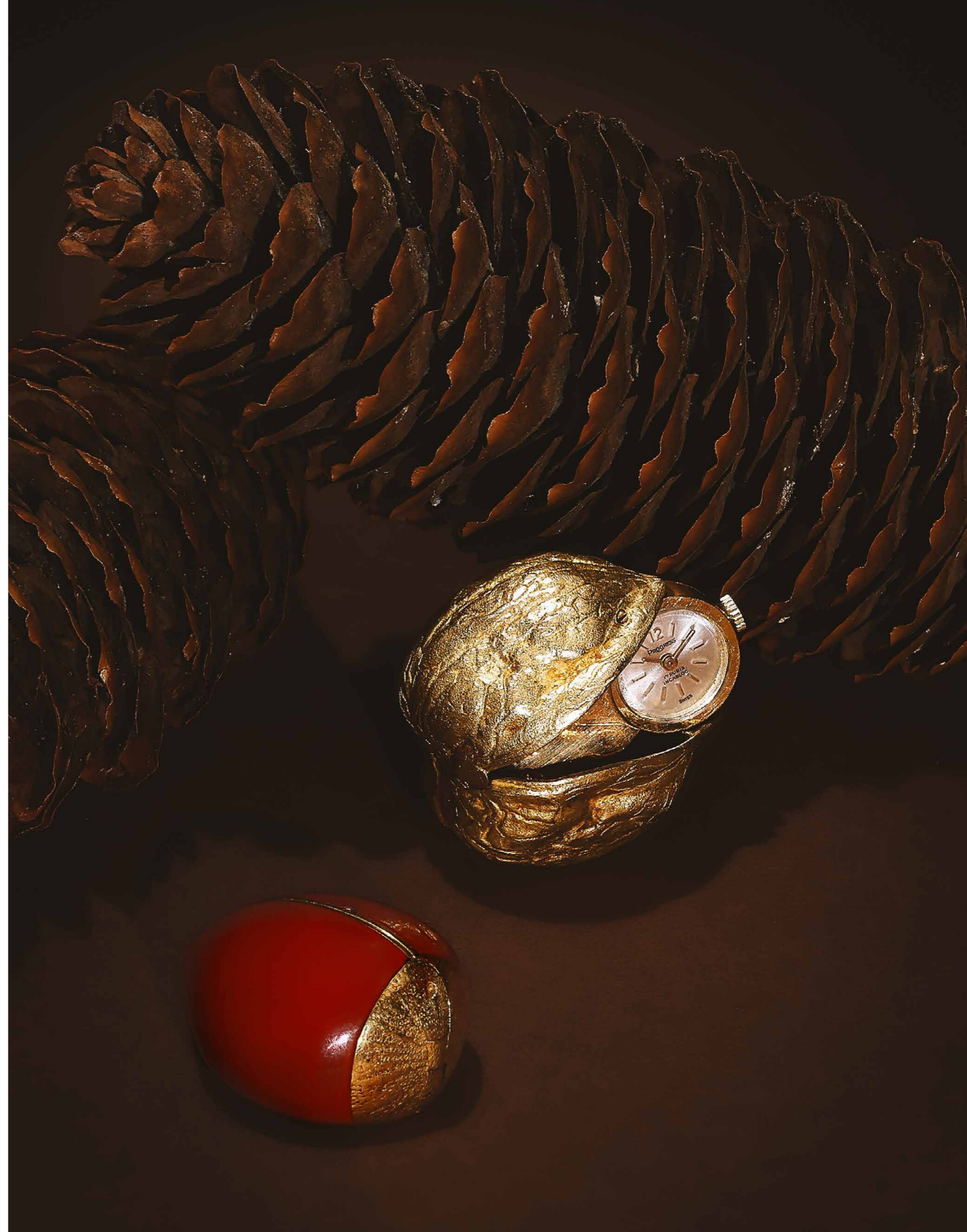


172

172
GEORGES LENFANT, A NOVELTY TRAVEL CLOCK
CIRCA 1965

Realistically modelled as a walnut, opening to reveal a circular watch case, with Arabic gilt 12 and baton hour markers, dial signed Progress, Incabloc, maker's mark GL, French poinçon
Size/dimensions: 3.2cm long
Gross weight: 43.5 grams

£1,800-2,200





173



174



176



175



177



178



179

173
**ROLEX, AN ART DECO
DIAMOND COCKTAIL WATCH**
CIRCA 1928

The navette shaped dial with Arabic numerals, within a shaped 18ct white gold bezel set throughout with single cut diamonds, dial, movement and case signed Rolex, numbered 48642 878, UK import hallmark, later Rolex strap
Size/dimensions: case 15.0mm wide
Gross weight: 15.8 grams

£500-700

174
**A PAIR OF 19TH CENTURY
EMERALD PENDANTS**

Each tumbled emerald bead with openwork rose cut diamonds cap, to an old European cut diamond base
Size/dimensions: 4.1 and 3.9cm long
Gross weight: 19.6 grams

£1,500-2,000

175
**A LATE 19TH CENTURY
NATURAL PEARL AND
DIAMOND PENDANT**

The baroque pearl set with rose cut diamond accents, to a rose cut diamond cap
Size/dimensions: 3.0cm long
Gross weight: 8.8 grams

Offered for sale with a Gemmological Certification Services (GCS) report, no. 5784-3833, dated 10th October 2024, stating:
Variety: Natural Nacreous Pearl
Environment: Saltwater

£500-700

176
**A GEM SET DRAGONFLY
BROOCH**

The body and pierced wings set throughout with old and rose cut diamonds, the tail collet set with alternating square and circular cut emeralds, with ruby eyes, detachable associated brooch fitting with French poinçon
Size/dimensions: 6.5cm wide
Gross weight: 15.1 grams

£3,000-5,000

177
**AN ART DECO EMERALD AND DIAMOND
PENDANT**

CIRCA 1930 AND LATER
The pear shaped emerald drop suspended from a pierced domed surmount set throughout with old European and rose cut diamonds, suspending three later palmette shaped pendants set with circular cut emeralds and diamonds, composite, unmarked
Size/dimensions: 6.5cm long
Gross weight: 23.9 grams

£5,000-7,000

178
**A PAIR OF MABÉ PEARL AND DIAMOND
PENDENT EARRINGS**

Each cultured mabé pearl with a single cut diamond cap with snake detail, to a tapered surmount pavé set with single cut diamonds, to a similarly set palmette shaped pediment and brilliant cut diamond connector, post fittings, stamped Plat
Size/dimensions: 5.2cm long
Gross weight: 21.6 grams

£2,000-3,000

179
A DIAMOND DOUBLE CLIP BROOCH

Each opposing clip designed as an openwork leaf set throughout with brilliant and single cut diamonds, issuing a three line spray of baguette, single and brilliant cut diamonds, diamonds approximately 5.50 carats total, unmarked
Size/dimensions: 6.2cm
Gross weight: 27.5 grams

£1,000-1,500



180



181



182



183



184



186



185



187

180
AN EMERALD AND DIAMOND THREE STONE RING

The rectangular step cut emerald with canted corners, between similarly cut diamond shoulders, diamonds approximately 1.30 carats total, unmarked
Size/dimensions: ring size J1/2
Gross weight: 4.1 grams

£1,500-2,000

181
A PAIR OF DIAMOND STUD EARRINGS

Each brilliant cut diamond in a six claw mount, diamonds approximately 1.50 carats total, post fittings
Size/dimensions: 0.7cm long
Gross weight: 2.8 grams

£1,000-1,500

182
A DIAMOND PENDANT NECKLACE

The openwork square panel set with a line of brilliant cut diamonds, suspended from a similarly set square surmount and curb link chain connector, to a fine curb link chain, diamonds approximately 2.20 carats total, stamped 750
Size/dimensions: 67.0cm long
Gross weight: 8.5 grams

£1,000-1,500

183
A PAIR OF EMERALD AND DIAMOND PENDENT EARRINGS

Each cushion shaped emerald surmount suspending three similarly cut emeralds collet set within brilliant cut diamond set scrolling openwork frames, diamonds approximately 0.35 carats total, post fittings
Size/dimensions: 5.8cm long
Gross weight: 11.2 grams

£1,500-2,000

184
AN EMERALD AND DIAMOND CLUSTER RING

The rectangular step cut emerald with canted corners, within a brilliant and marquise cut diamond two row surround, between brilliant cut diamond shoulders, diamonds approximately 0.75 carats total, mounted in 18ct white gold, UK hallmark
Size/dimensions: ring size M
Gross weight: 6.4 grams

Offered for sale with a Gem & Pearl Laboratory report, no. 24116, dated 5th January 2024, stating:
Natural Emerald
Origin opinion: Zambia
Comment: Evidence of moderate clarity enhancement

£2,500-3,500

185
A DIAMOND CLUSTER RING

The oval rose cut diamond in a foiled closed back setting within a target cluster surround of brilliant and rose cut diamonds, unmarked
Size/dimensions: ring size P
Gross weight: 10.4 grams

£1,200-1,800

186
A DIAMOND SINGLE STONE RING AND DIAMOND SET BAND

The brilliant cut diamond, weighing 1.01 carats, in a platinum eight claw mount, partial UK hallmark; together with a white gold band inset with brilliant cut diamonds, partial UK hallmark
Size/dimensions: ring sizes K and L
Gross weight: 9.4 grams

Single stone ring offered for sale with a GIA Gem Trade Laboratory report, no. 10486472, dated 12th November 1998, stating:
Clarity grade: Vs2
Colour Grade: F
Fluorescence: Medium blue

£1,500-2,000

187
AN EMERALD TASSEL PENDANT NECKLACE

The graduated emerald bead tassel accented with single cut diamond rondelles, to a pavé set diamond cap and trefoil surmount, suspended from a cable link chain, set with fluted emerald beads, cultured pearl and sapphire bead sections, chain clasp stamped 925
Size/dimensions: 67.5cm long
Gross weight: 29.3 grams

£2,000-3,000



188



191



189



192



190

188
CARTIER, A DIAMOND SET 'ENTRELACES C DE CARTIER' RING
 LONDON 1999
 Composed of opposing interlocking 18ct gold C-shaped motifs, alternately set with brilliant cut diamonds, diamonds approximately 0.30 carats total, signed Cartier, maker's mark, numbered 783025, UK hallmark, maker's case
 Size/dimensions: ring size N
 Gross weight: 8.3 grams

£500-700

189
CARTIER, A DIAMOND SET 'LOVE' RING
 The 18ct gold band inset with brilliant cut diamonds, signed Cartier, numbered F90897, Swiss and European control marks, maker's case
 Size/dimensions: ring size N
 Gross weight: 8.8 grams

£500-700

190
CARTIER, A GEM SET 'MAILLON PANTHERE' NECKLACE
 Designed as a polished gold panther with circular cut emerald eyes and a black enamelled nose, on a brick link necklace, signed Cartier, numbered 611871, stamped 750, French poinçon
 Size/dimensions: 40.50cm long
 Gross weight: 171.0 grams

£10,000-15,000

191
CARTIER, A RUBY RING
 The 18ct gold tapering band set with an oval cut ruby, signed Cartier, numbered B91947, maker's mark, European control mark
 Size/dimensions: ring size approximately N (sizing beads)
 Gross weight: 9.7 grams

£500-700

192
CARTIER, A SAPPHIRE RING
 The 18ct gold tapering band set with an oval cut sapphire, signed Cartier, numbered B91947, maker's mark, European control mark
 Size/dimensions: ring size approximately N (sizing beads)
 Gross weight: 9.5 grams

£500-700





193



194



195



196

193 Y
CARTIER, A TORTOISESHELL, CORAL AND DIAMOND 'MORETTO' BROOCH
 1960S
 The carved tortoiseshell face with cabochon coral and brilliant cut diamond set wirework dress and head dress, signed Cartier, numbered K7396, fitted maker's case
 Size/dimensions: 6.3cm long
 Gross weight: 25.7 grams

£8,000-12,000

194 Y
NARDI, A SAPPHIRE, CULTURED PEARL AND TORTOISESHELL 'MORETTO' BROOCH
 The carved tortoiseshell face with a circular cut sapphire and cultured pearl turban with ropetwist detail and star and sickle surmount, the tunic with circular cut yellow sapphire and cultured pearl border and sapphire accents, scrolled foliate detail verso, signed Nardi, stamped with Italian control marks and 750
 Size/dimensions: 6.0cm long
 Gross weight: 28.0 grams

£2,000-3,000

195 Y
NARDI, A GEM AND TORTOISESHELL 'MORETTO' BROOCH
 The carved tortoiseshell face with a circular cut ruby and rose cut garnet turban with ropetwist detail and star and sickle surmount, the tunic with circular cabochon opal doublets and cultured pearl border and ruby accents, polished verso, signed S. Nardi, stamped 750
 Size/dimensions: 6.0cm long
 Gross weight: 28.0 grams

£1,500-2,000

196
A GEM SET 'MORETTO' BROOCH/PENDANT
 LATE 18TH CENTURY AND LATER
 The carved banded agate head and turban, to an enamel collar with ruby bow, on a tri colour gold base, later applied with a cross shaped necklace with triangular cut diamonds, cabochon emerald, ruby and sapphires, and later head dress set with an old cushion shaped diamond and sapphire and emerald beads, converted from a seal, unmarked
 Size/dimensions: 5.1cm long
 Gross weight: 24.1 grams

£1,500-2,000



197

197
A RUBY, DIAMOND AND ENAMEL BANGLE

The hinged tapered bangle with blue enamel front, set with a cushion shaped and circular cut ruby and old European cut diamond flower head between similarly set foliate motifs, to an engraved border, diamonds approximately 2.00 carats total, unmarked
Size/dimensions: inner diameter 6.0cm
Gross weight: 49.5 grams

£1,000-1,500



198

198
A MID 19TH CENTURY DIAMOND AND ENAMEL SERPENT NECKLACE

The highly articulated interlinked chain to a blue enamel head set, with old oval and pear shaped diamonds, within a rose cut diamond surround, with circular cabochon garnet eyes, diamonds approximately 1.00ct total, composite, unmarked
Size/dimensions: 41.0cm long
Gross weight: 41.2 grams

£3,000-5,000



199

199
A LATE 19TH CENTURY TURQUOISE BRACELET

The quatrefoil clasp set with cabochon turquoise on a textured ground with reeded borders and foliate decoration, between similarly set trefoil shoulders, to a mesh link bracelet, unmarked
Size/dimensions: 20.0cm long
Gross weight: 41.9 grams

£700-1,000

200

A PAIR OF LATE 19TH CENTURY EMERALD AND DIAMOND EARRINGS

Each pear shaped emerald collet set within an old European cut diamond surround, to a square cut emerald and old cut diamond cluster surmount, diamonds approximately 2.20 carats total, mounted in silver and gold, later post fittings

Size/dimensions: 3.3cm long

Gross weight: 8.9 grams

£2,000-3,000



201

201

A VICTORIAN EMERALD, DIAMOND AND ENAMEL MOURNING LOCKET

The oval black enamel front applied with a foliate cartouche set with old European and rose cut diamonds and vari cut emeralds, to a diamond set black enamel bale, the inside engraved *Hungerford Chandos Hoskyns, our only son, C.W.H. & A.F.W.H., God gave him Sept. 12. 1852, God took him June 16. 1871, WISD: IV.7-14, REV: XIV. 1-5*, unmarked

Size/dimensions: 6.0cm long

Gross weight: 31.6 grams



200

202 Y

A LATE 19TH CENTURY CORAL CHRISTENING SUITE

Comprising a necklace, pair of bracelets, brooch, ring and pair of earrings, the necklace and bracelet composed of two strands of faceted coral beads, centring a cabochon coral, the necklace suspending a gold cross; the earrings, ring and brooch en suite, the earrings with French poinçon, fitted case by H. Fabre, Buenos Aires

Size/dimensions: necklace 26.5cm, bracelets 12.5cm, brooch 2.1cm, earrings 2.1cm long

Gross weight: 14.0 grams

Provenance:

Oliver Raphael Tisdall, thence by family descent



202

Hungerford Chandos Hoskyns was son of Mr. Chandos Wren Hoskyns, the second son and heir to the Baronetcy and M.P for the City of Hereford, and his wife Anne Fane Wren Hoskyns. Hungerford accidentally drowned in the river Usk whilst bathing.

£800-1,200

Alfred Oliver Tisdall moved to Argentina to set up St Saviour's Anglican Church in Belgrano, Buenos Aires. Their son Oliver Raphael Tisdall was born in Argentina 2nd April 1899, and this was his christening set. He served as a Lieutenant in the British army in the First World War, before qualifying as a GP and then became the school doctor at Harrow school. The family moved to Kells, County Meath, Ireland, when he inherited the family home.

£400-600



203



203 (reverse)

203
THE 1ST EARL OF LIVERPOOL,
A VICTORIAN SENTIMENTAL
LOCKET NECKLACE

CIRCA 1880-1895
 Designed as a snake link chain suspending ten gem set gold lockets, decorated with acrostic gem charges, reflecting the system of cadency, including a mullet, martlet, annulet or fleur-de-lys for the sons, and hearts for the daughters, each reverse engraved with initials and dates for each child, around a glazed compartment containing a lock of hair, unmarked
 Size/dimensions: 39.5cm long
 Gross weight: 78.1 grams

Provenance:
 Cecil George Savile Foljambe, 1st Earl of Liverpool, PC (7 November 1846 - 23 March 1907) and The Countess Liverpool Lady Rosamund Foljambe (1893-1974), later Countess of Leven Thence by direct family descent.

£5,000-8,000

The 1st Earl of Liverpool and his second wife, Susan Cavendish, The Countess Liverpool, had eleven children, the first ten represented by lockets as follows: Gerald William Frederick Savile Foljambe, 3rd Earl of Liverpool (1878-1962), an officer in the Oxfordshire Light Infantry - a garnet set mullet, reverse engraved *G.W.F.S.F.*, born 12 May 1878

Lady Edith Margaret Emily Mary Foljambe (1879-1962), married Brigadier-General D'Arcy Legard - an emerald set heart, reverse engraved *E.M.E.M.F.*, born 6 Sept.r 1879
 Lady Alice Etheldreda Georgiana Mary Foljambe (1880-1922), a painter - an amethyst heart beneath a diamond crescent, reverse engraved *A.E.G.M.F.*, born 18 Sept 1880

Lady Mabel Evelyn Selina Mary Foljambe (1881-1915), married Dr. William Woodburn - a moonstone heart beneath a diamond mullet, reverse engraved *M.E.S.M.F.*, born 25 Sept.r 1881
 Brevet Major Honourable Josceline Charles William Savile Foljambe (1882-1916), an officer in the Northumberland Fusiliers, killed in action in the First World War - a zircon (jargoon) and diamond set martlet, reverse engraved *J.C.W.S.F.*, born 16 Oct.r 1882

Margaret Susan Louisa Mary Foljambe (14 January 1884 - 16 January 1884), died in infancy - a moonstone heart in a black enamel surround with a rose cut diamond martlet above, reverse engraved *M.S.L.M.F* born 14 Jan.y 1884, died 16 Jan.y 1884
 Lady Constance Blanche Alethea Mary Foljambe (1885-1977), married Reverend Hezekiah Hawkins - a carbuncle garnet heart beneath a rose cut diamond annulet, reverse engraved *C.B.A.M.F.*, born 26th February 1885

Robert Anthony Edward St Andrew Savile Foljambe, 4th Earl of Liverpool (1887-1969) - a ruby annulet, reverse engraved *R.A.E.St.A.S.F.*, born 3rd April 1887
 Honourable Bertram Marmaduke Osbert Savile Foljambe (1891-1955), married Joyce Edmunson, grandfather to the present Earl of Liverpool - a beryl and rose cut diamond fleur-de-lys, reverse engraved *B.M.O.S.F.*, born 6th January 1891

Lady Rosamond Sylvia Diana Mary Foljambe (1893-12 April 1974), married Archibald Leslie-Melville, 13th Earl of Leven - a moonstone heart beneath a ruby, sapphire and diamond fleur-de-lys, reverse engraved *R.S.D.M.F.*, born 30th January 1893.
 The eleventh child, the Honourable Victor Alexander Cecil Savile Foljambe (1895-1975), has no locket on this necklace.

FINE WATCHES | LOTS 204-260





204

204
AN AMERICAN SILVER COLOURED AND ENAMEL 8-DAY DESK CLOCK
WALTHAM, STAMPED STERLING

With a white dial, black Roman numerals and gilt detail, pierced scrolled fancy hands, 8-day manual wind movement, the case decorated with roses and ribbons on a pink and very light blue enamelled ground
11cm (4 1/4in) high

£400-600

205
GUBELIN
A GOLD PLATED KEYLESS WIND WORLD TIME POCKET WATCH, CIRCA 1955
Movement: Cal. 330, manual wind, 17 jewels
Case: Gold plated three piece case, rotating bezel, easel back
Dial: Silvered
Size: 52mm
Signed: Dial, movement
Accessories: None

£700-1,000



205

206
LONGINES
A GOLD KEYLESS WIND OPEN FACE POCKET WATCH, SWITZERLAND 1893-1934 .750 MARK
Movement: Bimetallic split balance, overcoil balance spring, lever escapement
Case: Gold three piece snap case, the case back engraved N. G, stamped with a poinçon
Dial: Silvered
Size: 47mm
Signed: Dial, movement
Accessories: None

£500-700



206



208

207Y
EDWARD PRIOR
A SILVER AND TORTOISESHELL QUADRUPLE CASED POCKET WATCH FOR THE MIDDLE EASTERN MARKET, CIRCA 1851
Movement: Verge fusee, three armed balance, balloon balance cock, disc type regulator
Case: Plain silver inner two piece hinged case, hallmarked London 1851, the second silver two piece hinged case, hallmarked London 1851, the third silver and tortoiseshell two piece hinged case with studded decoration, the outer silver two piece hinged case engraved with floral and foliate decoration
Dial: White enamel
Size: Inner case 39mm, outer case 66mm
Signed: Dial, movement
Accessories: Winding key

£1,000-1,500



207

208
GOLDSMITHS & SILVERSMITHS CO. LTD.
AN 18 CARAT GOLD KEYLESS WIND HALF HUNTER POCKET WATCH, CIRCA 1905
Movement: Three quarter plate, bimetallic split balance, overcoil balance spring, lever escapement
Case: 18 carat gold five piece hinged case, the front cover with a blue enamel Arabic numeral chapter ring, the back cover engraved with a crest over G.C, hallmarked London 1905
Dial: White
Size: 49mm
Signed: Movement
Accessories: Goldsmiths & Silversmiths Co. Ltd. box

£1,500-2,000



209

209
HAMLEY
AN 18 CARAT GOLD OPEN FACE POCKET WATCH, CIRCA 1816
Movement: Lever fusee, undersprung three armed flat balance, balloon balance cock, diamond endstone
Case: 18 carat gold three piece hinged case, hallmarked London 1816
Dial: Gilt
Size: 52mm
Signed: Movement
Accessories: None

£500-700



211



210



212



213

210
PATEK PHILIPPE & CO. GENEVE
 A GOLD KEYLESS WIND FULL HUNTER REPEATER POCKET WATCH FOR THE AMERICAN MARKET, NO. 633216, CIRCA 1890
Movement: Bimetallic split balance, overcoil balance spring, lever escapement, repeater work
Case: Gold five piece hinged case, the front cover engraved with flowers and rectangular vacant reserve, the back cover engraved with flowers and a townscape, the cuvette engraved with a presentation inscription, stamped 14K
Dial: White
Size: 51mm
Signed: Dial signed Patek Philippe & Co., the case with mark for Brooklyn Watch Case Co.
Accessories: None

£2,000-3,000

211
UNSIGNED
 A GOLD KEYLESS WIND FULL HUNTER QUARTER REPEATER POCKET WATCH WITH CHRONOGRAPH SECONDS, NO. 281003
Movement: Overcoil balance spring, lever escapement, repeater work
Case: Gold five piece hinged case, stamped 0.585 with a poinçon
Dial: White
Size: 55mm
Signed: Unsigned
Accessories: None

£1,000-1,500

212
LONGINES
 A PLATINUM AND DIAMOND KEYLESS WIND OPEN FACE POCKET WATCH, CIRCA 1920
Movement: Bimetallic split balance, flat balance spring, lever escapement
Case: Platinum case, diamond set bezel, snap case back, stamped Platine
Dial: Silvered
Size: 45mm
Signed: Dial, movement
Accessories: None

£800-1,200

213
CARTIER
 A GOLD AND ENAMEL KEYLESS WIND MINUTE REPEATER FULL HUNTER POCKET WATCH, NO. L2423, CIRCA 1920
Movement: Bimetallic split balance, flat balance spring, lever escapement, repeater work, 29 jewels, eight adjustments
Case: Gold and enamel four piece case, the front cover with JNH within a circular reserve, stamped with a poinçon
Dial: White
Size: 50mm

Signed: Dial signed Cartier, movement signed European Watch & Clock Co.
Accessories: Cartier red leather case, a matching gold and enamel vesta case, stamped with a poinçon and signed Cartier Paris, no. 0466, with a diamond set thumb piece, 50mm; an associated French platinum, onyx and pearl chain, 36cm long; and a service quote from Jaeger-LeCoultre dated 18/10/2002

£20,000-30,000



214

214 Y
ROLEX, CHAMELEON, REF. 8788
 A LADY'S GOLD COLOURED
 WRISTWATCH WITH INTERCHANGEABLE
 STRAPS, NO. 259519, CIRCA 1957
Movement: Manual wind, 17 jewels
Case: Gold case, snap case back, stamped
 18K 0.750 with a poinçon
Dial: Cream
Strap: Rolex black lizard strap with gold plated
 pin buckle
Size: 16mm
Signed: Case, dial, movement, strap, buckle
Accessories: Rolex box, guarantee, seven
 spare straps, four gold plated pin buckles

£500-700



215

215
MUST DE CARTIER, COLISEE, REF. 2410
 A LADY'S SILVER GILT WRISTWATCH,
 NO. 628898CC
Movement: Cal. 157, quartz, 4 jewels
Case: Silver gilt case, screwed down case
 back with four screws, stamped with .925
 common control mark
Dial: White
Strap: Cartier brown leather strap with gold
 plated deployant clasp
Size: 24mm
Signed: Case, dial, movement, strap, clasp
Accessories: Cartier pouch

£400-600



216

216
MUST DE CARTIER, TANK
 A SILVER GILT WRISTWATCH,
 NO. 3 66001 03968
Movement: Cal. 66, quartz, 6 jewels
Case: Silver gilt case, screwed down case
 back with four screws, stamped with .925
 common control mark
Dial: Silvered
Strap: Cartier black leather strap with gold
 plated pin buckle
Size: 21mm
Signed: Case, dial, movement, strap
Accessories: None

£400-600



217

217
PATEK PHILIPPE, LA FLAMME, REF. 4816/3
 A LADY'S 18 CARAT GOLD AND DIAMOND BRACELET
 WATCH, NO. 2892732, CIRCA 1990
Movement: Cal. E15, quartz, 6 jewels
Case: 18 carat gold case, diamond set bezel and lugs, snap
 case back, stamped with 0.750 common control mark
Dial: Cream
Bracelet: Patek Philippe 18 carat gold and diamond bracelet
 with snap clasp
Size: 23mm, bracelet 15cm
Signed: Case, dial, movement, crown, clasp
Accessories: Patek Philippe box

£5,000-7,000



218



219



220



221



222



223

218
CARRERA Y CARRERA
 A LADY'S GOLD COLOURED AND DIAMOND WRISTWATCH, NO. 305 175982, CIRCA 1998
Movement: Cal. ETA 032, quartz, 7 jewels
Case: Gold coloured case, diamond set eyes to the panther head lugs, snap case back, stamped 18k 0.750
Dial: Champagne
Strap: Carrera y Carrera brown leather strap with gold coloured deployant clasp, stamped 750
Size: 26mm
Signed: Case, dial, strap, clasp
Accessories: Carrera y Carrera guarantee card, unsigned pouch

£800-1,200

219
CARRERA Y CARRERA
 A GOLD COLOURED AND DIAMOND WRISTWATCH, NO. 304 190970, CIRCA 1998
Movement: Cal. ETA 956112, quartz, 7 jewels
Case: Gold coloured case, diamond set eyes to the lugs, snap case back, stamped 18k 0.750
Dial: Champagne
Strap: Carrera Y Carrera brown leather strap with gold coloured deployant clasp, stamped 750
Size: 32mm
Signed: Case, dial, strap, clasp
Accessories: Carrera Y Carrera guarantee card, unsigned pouch

£1,000-1,500

220
CONCORD, SARATOGA, REF. 51 73 287 G
 A LADY'S 18 CARAT GOLD AND DIAMOND BRACELET WATCH WITH DATE, NO. 963566, CIRCA 1990
Movement: Cal. ETA 956112, quartz, 7 jewels
Case: 18 carat gold case, diamond set bezel, screwed down case back with five screws, stamped with .750 common control mark
Dial: Silvered
Bracelet: Concord gold bracelet with concealed clasp
Size: 23mm, bracelet 16cm
Signed: Case, dial, clasp
Accessories: None

£1,500-2,000

221
GERALD GENTA, REF. G.2850.7
 A BI-METAL WRISTWATCH WITH DATE, NO. 4640, CIRCA 1990
Movement: Cal. ETA 955 412, quartz, 7 jewels
Case: Stainless steel case, gold coloured bezel, screw down case back
Dial: White
Strap: Gerald Genta black leather strap with pin buckle
Size: 30mm
Signed: Case, dial, crown, strap
Accessories: None

£400-600

222 Y
GARRARD
 AN 18 CARAT GOLD WRISTWATCH, CIRCA 2000
Movement: Automatic
Case: 18 carat gold case, screwed down display case back with four screws, stamped with .750 common control mark
Dial: Silvered
Strap: Garrard black crocodile strap with gold plated pin buckle
Size: 37mm
Signed: Dial, movement, strap
Accessories: None

£800-1,200

223 Y
GARRARD
 A LIMITED EDITION PLATINUM WRISTWATCH, NO. 17/20, CIRCA 2000
Movement: Automatic
Case: Platinum case, hinged snap case back, stamped with .950 common control mark
Dial: Silvered
Strap: Garrard black crocodile strap with white gold deployant clasp
Size: 37mm
Signed: Case, dial, movement, strap, clasp
Accessories: None

£800-1,200



224

224

CHANEL, CAMELIA

A LADY'S 18 CARAT WHITE GOLD AND DIAMOND WRISTWATCH WITH CONCEALED DIAL, CIRCA 1997

Movement: Cal. ETA. E01701, quartz, 5 jewels

Case: 18 carat white gold and diamond set camelia shaped case, sliding cover, screwed down case back with four screws, stamped with 0.750 common control mark

Dial: Silvered

Strap: Chanel black satin and leather strap with white gold deployant clasp

Size: 33mm

Signed: Case, dial, strap, clasp

Accessories: None

£20,000-30,000





225

225

AUDEMARS PIGUET, MILLENARY, REF. 77244OR.GG.1272OR.01
AN 18 CARAT FROSTED GOLD AND SEMI SKELETONIZED
BRACELET WATCH, NO. K18418, CIRCA 2020

Movement: Cal. 5201, manual wind, 19 jewels

Case: 18 carat frosted gold case, screwed down display case back
with five screws, stamped with .750 common control mark

Dial: Opal

Bracelet: Audemars Piguet 18 carat gold woven bracelet with
concealed clasp

Size: 40mm, bracelet 15cm

Signed: Case, dial, movement, clasp

Accessories: None

£15,000-25,000





226



227



228



229



230



231

226

CARTIER, PANTHERE
A MID-SIZE BI-METAL BRACELET WATCH WITH DATE, NO. 8395706825
Movement: Cal. 83, quartz, 9 jewels
Case: Stainless steel case, gold coloured bezel, screwed down case back with eight screws
Dial: Silvered
Bracelet: Cartier bi-metal bracelet with concealed clasp
Size: 29mm, bracelet 18cm
Signed: Case, dial, movement, clasp
Accessories: None

£1,200-1,800

227

CARTIER, PANTHERE, REF. 1120
A LADY'S BI-METAL BRACELET WATCH, NO. 157818CD, CIRCA 1995
Movement: Cal. 157, quartz, 4 jewels
Case: Stainless steel case, gold coloured bezel, screwed down case back with eight screws
Dial: Silvered
Bracelet: Cartier bi-metal bracelet with concealed clasp
Size: 22mm, bracelet 17cm
Signed: Case, dial, movement, clasp
Accessories: Cartier box

£1,000-1,500

228

CARTIER, TANK FRANCAIS, REF. 2384
A LADY'S BI-METAL BRACELET WATCH, NO. 321891CD, CIRCA 2005
Movement: Cal. 057, quartz, 4 jewels
Case: Stainless steel case, screwed down case back with four screws
Dial: Silvered
Bracelet: Cartier bi-metal bracelet with concealed clasp
Size: 20mm, bracelet 15.5cm
Signed: Case, dial, movement, clasp
Accessories: Cartier pouch

£800-1,200

229

CARTIER, SANTOS GALBEE, REF. 1565
A LADY'S STAINLESS STEEL BRACELET WATCH, NO. 212561RX, CIRCA 2005
Movement: Cal. 157, quartz, 4 jewels
Case: Stainless steel case, screwed down case back with eight screws
Dial: Silvered
Bracelet: Cartier stainless steel bracelet with concealed clasp
Size: 23mm, bracelet 17cm
Signed: Case, dial, movement, clasp
Accessories: Cartier box, a spare link

£800-1,200

230

CARTIER, SANTOS DUMONT, REF. 2650
AN 18 CARAT GOLD WRISTWATCH, NO. 368342CE, CIRCA 2010
Movement: Cal. 430 MC, manual wind, 18 jewels
Case: 18 carat gold case, screwed down case back with eight screws, stamped with 0.750 common control mark
Dial: Silvered
Strap: Unsigned brown pressed leather strap with Cartier gold deployant clasp
Size: 35mm
Signed: Case, dial, movement, clasp
Accessories: None

£3,500-4,500

231

CARTIER, SANTOS 100, REF. 2878
A STAINLESS STEEL WRISTWATCH, NO. 188277LX, CIRCA 2010
Movement: Automatic
Case: Stainless steel case, screwed down bezel, screwed down case back with eight screws
Dial: Silvered
Strap: Cartier pink leather strap with stainless steel double deployant clasp
Size: 33mm
Signed: Case, dial, movement, strap, clasp
Accessories: None

£1,500-2,500



232

232

HUBLOT, BIG BANG TUTTI FRUITTI

A GOLD COLOURED, TITANIUM AND AMETHYST CHRONOGRAPH WRISTWATCH WITH DATE, NO. 813837, CIRCA 2010

Movement: Cal. ETA. 2894-2, automatic chronograph, 37 jewels

Case: Gold coloured and titanium case, amethyst set bezel, screwed down display case back with six screws, stamped gold 750 with a poinçon

Dial: White

Strap: Hublot purple rubber strap with gold coloured and gold plated deployant clasp

Size: 41mm

Signed: Case, dial, movement, crown, strap, clasp

Accessories: None

£6,000-8,000





233



234



235



236



237

233
OMEGA, CONSTELLATION PERPETUAL CALENDAR, REF. 1252.30.00
 A BI-METAL BRACELET WATCH WITH DATE, NO. 58119112, CIRCA 2003
Movement: Cal. 1680, quartz
Case: Stainless steel case, gold coloured bezel, snap case back
Dial: Silvered
Bracelet: Omega bi-metal bracelet with fold over clasp
Size: 35mm, bracelet 16cm
Signed: Case, dial, movement, crown, clasp
Accessories: Omega box, guarantee card, instruction book, swing tag, four spare links, outer card packaging

£500-700

234
OMEGA, CONSTELLATION
 A BI-METAL WRISTWATCH WITH DATE, CIRCA 1990
Movement: Cal. 1111, automatic
Case: Stainless steel case, gold coloured bezel, snap display case back
Dial: Champagne
Strap: Omega brown leather strap with gold plated pin buckle
Size: 35mm
Signed: Case, dial, movement, crown, strap, buckle
Accessories: None

£400-600

235
OMEGA, CONSTELLATION
 A BI-METAL BRACELET WATCH WITH DATE, NO. 80704716
Movement: Automatic
Case: Stainless steel, gold coloured bezel, snap case back
Dial: Silvered
Bracelet: Omega bi-metal bracelet with fold over clasp
Size: 35mm, bracelet 17cm
Signed: Case, dial, crown, clasp
Accessories: Omega service case

£800-1,200

236
OMEGA, CONSTELLATION, REF. 191.86.03
 AN 18 CARAT GOLD BRACELET WATCH, CIRCA 1975
Movement: Cal. 1330, quartz, 3 jewels
Case: 18 carat gold case, snap case back, stamped with 0.750 common control mark
Dial: Champagne
Bracelet: Integral 18 carat gold bracelet with ladder snap clasp
Size: 32mm, bracelet 18cm
Signed: Case, dial, movement, clasp
Accessories: None

£2,000-3,000

237
AUDEMARS PIGUET
 A WHITE GOLD COLOURED BRACELET WATCH, NO. 6233, CIRCA 1960
Movement: Cal. 2001, manual wind
Case: White gold coloured case, snap case back, stamped 18K 0.750 with a poinçon
Dial: Silvered
Bracelet: White gold coloured brick link bracelet with snap clasp, stamped 750
Size: 31mm, bracelet 14cm
Signed: Case, dial, movement
Accessories: None

£1,500-2,000



238

238
ROLEX, OYSTER PERPETUAL DATEJUST, REF. 178240
A LADY'S STAINLESS STEEL BRACELET WATCH WITH DATE, NO. M308982, CIRCA 2007
Movement: Cal. 2235, automatic, 31 jewels
Case: Stainless steel case, screw down crown, screw down case back
Dial: Silvered
Bracelet: Rolex Oyster stainless steel bracelet with fold over clasp
Size: 30mm, bracelet 16cm
Signed: Case, dial, movement, crown, clasp
Accessories: None

£1,500-2,000



239

239
ROLEX, OYSTER PERPETUAL DATE, REF. 6516
A LADY'S BI-METAL WRISTWATCH WITH DATE, NO. 2151700, CIRCA 1969
Movement: Cal. 1161, automatic, 26 jewels
Case: Stainless steel case, gold coloured bezel, screw down crown, screw down case back
Dial: Champagne
Strap: Hirsch brown leather strap with pin buckle
Size: 25mm
Signed: Case, dial, movement, crown
Accessories: None

£600-800



240

240
ROLEX, OYSTER PERPETUAL DATEJUST, REF. 16013
A BI-METAL BRACELET WATCH WITH DATE, NO. 5733181, CIRCA 1978
Movement: Cal. 3035, automatic, 27 jewels
Case: Stainless steel case, gold coloured bezel, screw down crown, screw down case back
Dial: Champagne
Bracelet: Rolex Jubilee bi-metal bracelet with fold over clasp
Size: 35mm, bracelet 19.5cm
Signed: Case, dial, movement, crown, clasp
Accessories: Rolex service pouch and box

£1,500-2,500



241

241
ROLEX, OYSTER PERPETUAL DATEJUST, REF. 178271
A MID-SIZE BI-METAL BRACELET WATCH WITH DATE, NO. 9566G8F5, CIRCA 2015
Movement: Cal. 2235, automatic, 31 jewels
Case: Stainless steel case, gold coloured bezel, screw down crown, screw down case back
Dial: White
Bracelet: Rolex bi-metal bracelet with fold over clasp
Size: 31mm, bracelet 18.5cm
Signed: Case, dial, movement, crown, clasp
Accessories: None

£3,000-5,000



242



243



244



245



246



247

242
 ROLEX, OYSTER PERPETUAL DATEJUST 'BAMBOO BEZEL', REF. 1603
 A STAINLESS STEEL WRISTWATCH WITH DATE, CIRCA 1960
Movement: Cal. 1560, automatic, 25 jewels
Case: Stainless steel case, screw down crown, screw down case back
Dial: Black
Strap: Darlena red leather strap with pin buckle
Size: 35mm
Signed: Case, dial, movement, crown
Accessories: None

£1,000-1,500

243 Y
 ROLEX, OYSTER BUBBLE BACK, REF. 3372
 A BI-METAL WRISTWATCH, CIRCA 1945
Movement: Automatic
Case: Stainless steel case, gold coloured bezel, screw down crown, screw down case back
Dial: Silvered
Strap: Non-original brown lizard strap with Rolex stainless steel pin buckle
Size: 32mm
Signed: Case, dial, movement, crown, clasp
Accessories: None

£1,000-1,500

244
 ROLEX, OYSTER ROYAL, REF. 6246
 A STAINLESS STEEL WRISTWATCH, NO. 234275, CIRCA 1950
Movement: Cal. 710, manual wind, 15 jewels
Case: Stainless steel case, screw down crown, screw down case back
Dial: Silvered
Strap: Unsigned black leather strap with steel pin buckle
Size: 31mm
Signed: Case, dial, movement, crown
Accessories: Rolex box

£600-800

245
 INTERNATIONAL WATCH COMPANY (IWC), REF. 809A
 A STAINLESS STEEL BRACELET WATCH WITH DATE, NO. 1759295, CIRCA 1960
Movement: Cal. 8541, automatic
Case: Stainless steel case, snap case back
Dial: Silvered
Bracelet: IWC stainless steel bracelet with fold over clasp
Size: 34mm
Signed: Case, dial, movement, clasp
Accessories: None

£600-800

246
 OMEGA
 A MILITARY WRISTWATCH, NO. Y22692 10686891, CIRCA 1940
Movement: Cal. 30T2, manual wind, 15 jewels
Case: Stainless steel case, fixed bars, screw down case back
Dial: Black
Strap: Non-original black leather strap with stainless steel pin buckle
Size: 35mm
Signed: Case, dial, movement, crown
Accessories: None

£800-1,200

247
 OMEGA, REF. 2292
 A MILITARY STAINLESS STEEL WRISTWATCH, CIRCA 1945
Movement: Cal. 30 T2 SC, manual wind, 16 jewels
Case: Stainless steel case, fixed bars, snap case back
Dial: Cream
Strap: Unsigned brown leather strap with stainless steel pin buckle
Size: 33mm
Signed: Case, dial, movement
Accessories: None

£500-700



248

248 Y
BREITLING, CHRONOMATIC, REF. A41360
 A STAINLESS STEEL CHRONOGRAPH
 WRISTWATCH WITH DATE, NO. 2024899,
 CIRCA 2008
Movement: Cal. ETA 2892A2, automatic
 chronograph
Case: Stainless steel case, rotating bezel with
 slide rule, screw down case back
Dial: Black
Strap: Breitling brown crocodile strap with
 stainless steel pin buckle
Size: 44mm
Signed: Case, dial, crown, strap, buckle
Accessories: Breitling box, international
 warranty, instruction booklet, outer card box

£1,500-2,500



249

249
BREITLING, NAVITIMER, REF. A13022
 A STAINLESS STEEL CHRONOGRAPH
 WRISTWATCH WITH DATE, NO. 18649,
 CIRCA 1995
Movement: Cal. ETA 7750, automatic
 chronograph, 25 jewels
Case: Stainless steel case, rotating bezel with
 slide rule, screw down case back
Dial: Black
Strap: Breitling black leather strap with
 stainless steel deployant clasp
Size: 42mm
Signed: Case, dial, crown, strap, clasp
Accessories: Breitling box, slide rule
 instructions, outer card box

£1,500-2,500



250

250
BREITLING, NAVITIMER, REF. A23322
 A STAINLESS STEEL CHRONOGRAPH
 WRISTWATCH WITH DATE, NO. 818279,
 CIRCA 2005
Movement: Cal. ETA 7753, automatic
 chronograph, 27 jewels
Case: Stainless steel case, rotating bezel with
 slide rule, screw down case back
Dial: Black
Strap: Breitling black leather strap with
 stainless steel pin buckle
Size: 42mm
Signed: Case, dial, movement, crown, strap,
 buckle
Accessories: Breitling box, international
 warranty, chronometer certificate, instruction
 booklets, swing tag, outer card box

£2,000-3,000



251

251
BREITLING, SUPER AVENGER, REF. A13370
 A STAINLESS STEEL CHRONOGRAPH BRACELET WATCH WITH DATE, NO. 2182948, CIRCA 2009
Movement: Automatic chronograph
Case: Stainless steel case, rotating bezel, screw down crown, screw down case back
Dial: Blue
Bracelet: Breitling stainless steel bracelet with fold over clasp
Size: 48mm, bracelet 17.5cm
Signed: Case, dial, crown, clasp
Accessories: Breitling box, international warranty, chronometer certificate, instruction booklet, outer card packaging

£1,500-2,500



252

252

BELL & ROSS, INSTRUMENT PHANTOM, REF. BR-01-92-SB
A LIMITED EDITION BLACK COATED STAINLESS STEEL
WRISTWATCH, NO. 231/500, CIRCA 2005

Movement: Automatic

Case: Black coated stainless steel screwed case, screw down crown

Dial: Black

Strap: Bell & Ross black rubber strap with pin buckle

Size: 46mm

Signed: Case, dial, crown, strap, buckle

Accessories: Guarantee card, booklet, strap changing tools, Bell & Ross
black strap, Bell & Ross magnetic bag lamp

£500-700



253

253 Y

CHRONOSWISS, SIRUS, REF. CH 1923
A STAINLESS STEEL WRISTWATCH WITH DAY AND DATE,
NO. 1B046, CIRCA 2015

Movement: Cal. 128, automatic, automatic, 30 jewels

Case: Stainless steel case, onion crown, screw down display case back

Dial: Black

Strap: Chronoswiss black alligator strap with stainless steel pin buckle

Size: 40mm

Signed: Case, dial, movement, strap, buckle

Accessories: Chronoswiss case

£500-700

254

OMEGA, SPEEDMASTER REDUCED, REF. 175 0032.1/175 033.1
A STAINLESS STEEL CHRONOGRAPH BRACELET WATCH, NO. 57152334,
CIRCA 2000

Movement: Cal. 3220, automatic, 47 jewels

Case: Stainless steel case, snap case back

Dial: Black

Bracelet: Omega stainless steel bracelet with fold over clasp

Size: 39mm, bracelet 17.5cm

Signed: Case, dial, movement, crown, clasp

Accessories: Three spare links

£1,000-1,500





255

255
JAEGER-LECOULTRE, REVERSO,
REF. 270.1.62
AN 18 CARAT GOLD REVERSIBLE
WRISTWATCH, NO. 1761904, CIRCA 2000
Movement: Manual wind
Case: 18 carat gold reversible sliding case,
stamped with 0.750 common control mark
Dial: Silvered
Strap: Jaeger-LeCoultre brown ostrich strap
with gold pin buckle
Size: 26mm
Signed: Case, dial, crown, strap, buckle
Accessories: None

£3,000-5,000



256

256
JAEGER-LECOULTRE, REVERSO NIGHT
AND DAY, REF. 270.8.54
A STAINLESS STEEL REVERSIBLE DOUBLE
DIAL WRISTWATCH WITH 24 HOUR
INDICATION, NO. 1952539, CIRCA 2005
Movement: Manual wind
Case: Stainless steel reversible sliding case
Dial: Silvered, the reverse grey
Strap: Jaeger-LeCoultre brown ostrich strap
with stainless steel deployant clasp
Size: 26mm
Signed: Case, dial, crown, strap, clasp
Accessories: None

£2,500-3,500



257

257Y
JAEGER-LECOULTRE, REVERSO NIGHT
AND DAY, REF. 270.8.54
A STAINLESS STEEL REVERSIBLE DOUBLE
DIAL WRISTWATCH WITH 24 HOUR
INDICATION, NO. 2100789, CIRCA 2005
Movement: Manual wind
Case: Stainless steel reversible sliding case
Dial: Silvered, the reverse grey
Strap: Duball Paris black alligator strap with
Jaeger-LeCoultre stainless steel deployant
clasp
Size: 26mm
Signed: Case, dial, crown, clasp
Accessories: None

£2,500-3,500





258

258 Y

JAEGER-LECOULTRE, MASTER CONTROL, REF. 140.3.80

AN 18 CARAT WHITE GOLD PERPETUAL CALENDAR WRISTWATCH WITH MOONPHASE, NO. 0350, CIRCA 2000

Movement: Automatic, 50 jewels

Case: 18 carat white gold case, display case back under a hinged cover, stamped with 0.750 common control mark

Dial: Silvered

Strap: Jaeger-LeCoultre brown crocodile strap with stainless steel deployant clasp

Size: 37mm

Signed: Case, dial, movement, crown, strap, clasp

Accessories: Jaeger-LeCoultre box, adjustment tool and outer card packaging

£5,000-7,000





259

259 Y

BREGUET, CLASSIQUE, REF. 5920 BA

AN 18 CARAT GOLD WRISTWATCH WITH DATE, NO. 635K, CIRCA 2003

Movement: Cal. 516, automatic, 31 jewels

Case: 18 carat gold case, screwed down case back with six screws, stamped with 0.750 common control mark

Dial: Silvered

Strap: Breguet black alligator strap with 18 carat gold pin buckle

Size: 34mm

Signed: Case, dial, movement, crown, strap

Accessories: Breguet box, guarantee booklet, instruction booklet and outer card packaging

£3,000-5,000



260

260 Y

PATEK PHILIPPE, CALATRAVA, REF. 3919

AN 18 CARAT GOLD WRISTWATCH, NO. 2868677, CIRCA 1990

Movement: Cal. 215, manual wind, 18 jewels

Case: 18 carat gold case, snap on bezel, case back stamped with 0.750 common control mark

Dial: White

Strap: Patek Philippe black alligator strap with gold pin buckle

Size: 33mm

Signed: Case, dial, movement, crown, strap, buckle

Accessories: None

£4,000-6,000



MODERN DESIGN & DECORATIVE ART



EDGAR BRANDT (FRENCH, 1880-1960)
A LARGE CONSOLE; CIRCA 1930
Est. £30,000–50,000 (+ fees)

AUCTION | NEWBURY | 21 NOVEMBER

Enquiries: gsanders@drewatts.com 01635 553 553

drewatts.com
NEWBURY | LONDON



DREWEATTS
EST. 1759

COMING UP AT DREWEATTS & FORUM AUCTIONS

23 October | Drewatts
Modern and Contemporary Art

24 October | Forum Auctions
Prints and Multiples 1500-2024

29 October | Forum Auctions
Only Banksy

29 & 30 | Drewatts
Tomasso

7 November | Drewatts
Interiors

13 & 14 November | Drewatts
Chinese Ceramics & Works Of Art:
To Include Japanese, Indian & Islamic Art

14 November | Forum Auctions
A Visual and Historical Voyage into the Ottoman World:
the Library of a Gentleman

19 November | Drewatts
Fine Champagne and Sparkling Wine

20 November | Drewatts
Fine Jewellery And Watches

20 November | Drewatts
Fine Wine, Champagne, Vintage Port and Spirits

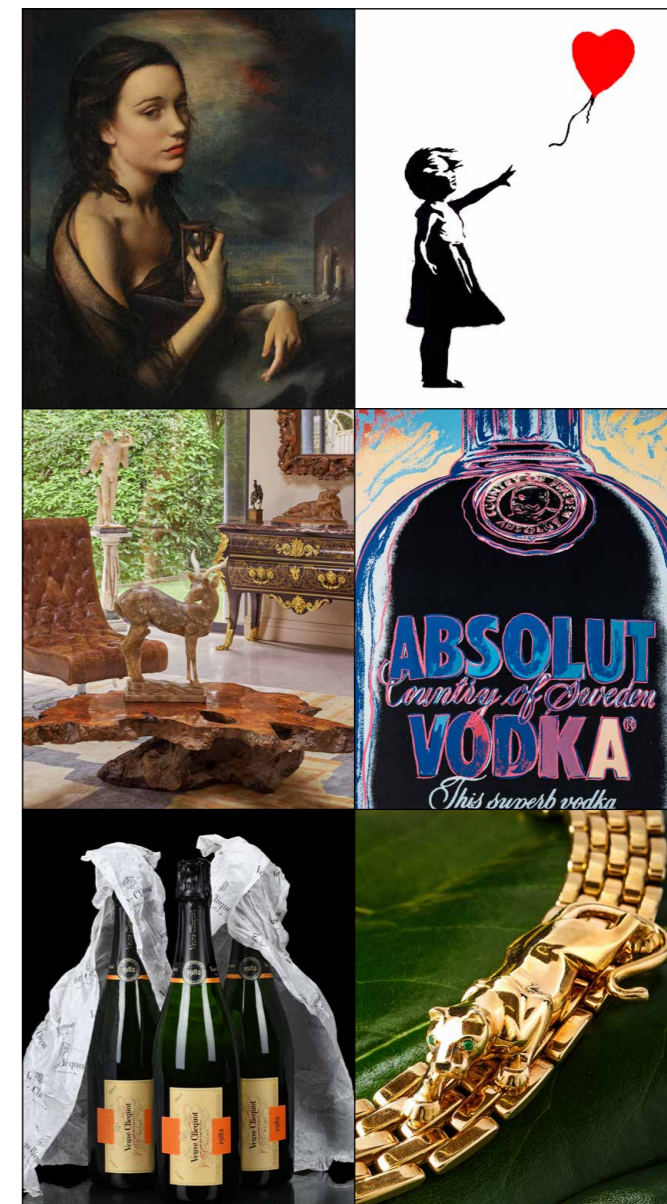
21 November | Drewatts
Modern Design and Decorative Art

21 November | Forum Auctions
Fine Books, Manuscripts and Works on Paper

27 November | Forum Auctions
Modern & Contemporary Art and Editions

3 & 4 December | Drewatts
Fine Furniture, Sculpture, Carpets, Ceramics and Works of Art

10 December | Drewatts
Fine Wine, Champagne, Vintage Port and Spirits



NOW INVITING ENTRIES

If you have an item you would like valued for sale at auction, we would be delighted to provide you with a free, no obligation estimate. Contact us to arrange an in-person appointment or visit our website to see how to submit the information online.

DREWEATTS
EST. 1759

drewatts.com
info@drewatts.com
NEWBURY
01635 553 553
LONDON
020 7839 8880

forumauctions.co.uk
info@forumauctions.co.uk
LONDON
020 7871 2640

 **Forum**
Auctions

IMPORTANT NOTICES TO WATCH BUYERS

DAMAGE, RESTORATION, ALTERATION

Although every effort is made to note any damage, restoration or alterations, the absence of any such information in catalogue descriptions does not imply the lot is in perfect condition and free from any such defects. Prospective buyers should satisfy themselves as to the condition of any lot prior to bidding. All watches are serviced from time to time, and Dreweatts are unable to guarantee that the working parts of any watch movement, glass or crystal, winding crowns, watch bracelet, strap or buckle are the manufacturers' original parts, unless otherwise stated in the catalogue description. We are unable to make any representation in our catalogue descriptions or condition reports as to the authenticity of such parts. Dreweatts are unable to make any representation, nor make any comment on, the authenticity of diamonds, or other gemstones, set into watch dials, bezels, cases and bracelets.

AUTHENTICATION

All watch movements have been inspected by Dreweatts watchmaker and specialists, and we have verified all inventory and movement numbers. For the information of potential bidders, all inventory and movement numbers are listed in the catalogue description for the relevant lot.

IMPORTANT NOTICES TO JEWELLERY BUYERS

DAMAGE, RESTORATION, ALTERATION

Although every effort is made to note any damage, restoration or alterations, the absence of any such information in catalogue descriptions does not imply the lot is in perfect condition and free for any such defects. Prospective buyers should satisfy themselves as to the condition of any lot prior to bidding.

ENHANCEMENT

Prospective bidders should be aware that many coloured gems have been historically treated by a variety of methods to improve their appearance, both in terms of colour and transparency. Rubies and sapphires are routinely heat treated, emeralds are enhanced through the use of coloured and transparent oils and resins, and jadeite is routinely stained. These treatments, and others including irradiation and coating, are generally accepted by the jewellery trade as standard practice. Although most treatments are considered to be permanent, those gemstones which have been oiled may need to be re-treated to maintain their appearance. Any such treatments affect the market value of coloured gemstones, and Dreweatts pre-sale estimates published in the catalogue assume that all gemstones, unless otherwise stated in the catalogue, may have been enhanced. Dreweatts may obtain Gemmological Reports from a recognised laboratory where appropriate detailing any enhancements, or lack of, for certain gemstones, and such reports may be obtained for prospective bidders prior to the sale, provided such requests are made at least three weeks before the sale, and that the requesting party has pre-paid for such a report. However it is not possible for Dreweatts to obtain reports for every stone offered in the sale.

In the absence of a gemmological laboratory report, it is not possible for Dreweatts to make any comment on the possibility that any gemstone in any lot may have been subject to enhancement.

Dreweatts catalogue descriptions and condition reports adhere to the guidelines laid out in the 'Blue Book' of CIBJO, the International Jewellery Confederation.

IMPORT/EXPORT RESTRICTIONS

There may be Import Restrictions into some territories outside the United Kingdom placed on certain watch brands, or on the importation of watches with straps composed of animal skins which may fall under CITES Regulations. It is the sole responsibility of the buyer to comply with all Export/Import regulations and potential bidders are strongly recommended to check with their shipping agent as to any such regulations that may apply to any lot. Dreweatts are not shippers and are unable to offer any advice regarding such regulations.

CONDITION REPORTS

Dreweatts condition reports will identify whether a watch functions at the time of cataloguing, and suggest possible, but not comprehensive, restoration work that may need to be carried out for the watch to function properly. Dreweatts are unable to test watches for accuracy or running to time, and we cannot guarantee that any watch will function when purchased from us.

As we have examined all watch movements by removing the case backs, we cannot guarantee that water resistant watches will remain water resistant following purchase from us. Dreweatts recommend that any watch purchased from us is subsequently overhauled by a competent watchmaker to ensure proper functioning.

WEIGHTS

All gram weights have been obtained using an electronic balance, but weights stated in the catalogue are approximate and for guidance only, and potential bidders should satisfy themselves as to their accuracy. '...approximately 1.20 carats total,...' all such stone weights are estimated using standard equipment and formulae, and are subject to the limitations imposed by the mount.

'...weighing 1.20 carats,...' where the description reads as such, the stones in question have been removed from the mount and weighted using an electronic balance.

SIGNATURES

'...by Lacluche,...' in our opinion is a piece made by or for the jeweller, bearing relevant signatures, maker's marks, and where appropriate, the maker's inventory number/s.

'...signed Lacluche,...' in our opinion is a piece retained by the jeweller, but not necessarily made by them. This may also mean that the piece has been mounted by the jeweller using stones supplied by the client; a special commission from a client's design; or has been altered or later added to.

COLOURED STONES OF BURMA (MYANMAR) ORIGIN

Buyers should be aware that certain territories (notably the United States of America) have import restrictions on certain coloured gemstones. All gemstones that maybe of Burma (Myanmar) origin, notably rubies and jadeite, may require a certificate of origin before they can be imported. Prospective bidders for such gemstones should check with their shipper, and relevant Government authorities regarding any necessary certification prior to bidding. Whilst Dreweatts are able to suggest a number of Gemmological Laboratories for such certification, we are unable to carry out any such certification for potential bidders or buyers.

Detailed condition reports for all lots are available from our website www.dreweatts.com, and upon direct request to the Saleroom.

Please note that Dreweatts are unable to give verbal condition reports for any lot, and all condition reports will be given in writing via our website www.dreweatts.com. Dreweatts jewellery specialists and qualified gemmologists are available during the view to answer any queries.

Dreweatts are unable to offer any form of packing, dispatch or shipping services, and clients should make their own collection arrangements for purchased lots. Dreweatts are happy to suggest the services of a number of dispatch and shipping carriers.

Please see [Conditions of Business and Conditions of Sale on the following pages](#).

Dreweatts & Dreweatts 1759 are trading names of Dreweatts 1759 Ltd. Dreweatts 1759 Ltd is registered in England, company number: 10758982, registered office: C/O Bishop Fleming LLP, 10 Temple Back, Bristol, BS1 6FL.

IMPORTANT NOTICES

BUYING AT DREWEATTS

There are several ways you can bid at a Dreweatts auction; in person, by leaving a commission or absentee bid, on the telephone where available and live via the internet – please make arrangements before the sale. THIS NOTICE APPLIES ONLY TO A PERSON WHO WISHES TO BID IN PERSON, OR BY LEAVING A COMMISSION OR ABSENTEE BID, AT A DREWEATTS PUBLIC AUCTION. For bidding at an online auction or for online bidding at a public auction please see our Online Auction Terms published on our website at www.dreweatts.com.

BIDDING IN PERSON

If intending to buy you are required to register your name and details at reception prior to the commencement of the auction. You will be required to provide a proof of identity and address to register for bidding. You will then be allocated a bidding number, which you use when bidding for an item.

COMMISSION BIDS

Dreweatts will execute bids on your behalf if you are unable to attend the sale. Commission or absentee bids are accepted either directly at reception, or can be sent by post, fax, email, telephone or via the website: www.dreweatts.com.

Dreweatts will add these bids to the auctioneers' sale book and will undertake to purchase the lots on your behalf as cheaply as allowed by other bids and reserves. If two buyers submit identical commission bids Dreweatts may prefer the first bid received.

Dreweatts does not accept liability for failing to execute commission bids, or for any errors or omissions.

CONDITION

Bidders must satisfy themselves as to the condition of each lot. Condition reports are available on request – see the Conditions of Business at the back of this catalogue forming part of these Auction Terms and Conditions for more information regarding condition reports. Requests for condition reports must be submitted by 4pm on the day prior to the auction; condition reports may be available alongside the lot description on the online catalogue at: www.dreweatts.com.

COMMISSION CHARGES

All purchases are subject to a buyer's premium, which is charged per lot at 26% of the hammer price (31.2% including VAT) up to and including £20,000, 25% (30% including VAT) of the hammer price from £20,001 up to and including £500,000, 20% (24% including VAT) of the hammer price from £500,001 up to and including £1,000,000 and 12.5% of the hammer price (15% including VAT) in excess of £1,000,000. A theta symbol (θ) indicates that the lot is a zero rated item and therefore not subject to VAT on the buyer's premium. This applies to bound books (manuscripts and printed), unframed maps and albums. In the event the lot has a dagger (†) beside the lot number in the catalogue, this indicates that the lot is owned by an entity or company required to pay VAT (generally not an Antique Dealer, as they operate under a dealers margin scheme). VAT is payable at 20% on the Hammer Price. Lots marked with a double dagger (‡) (presently a reduced rate of 5%) or Ω (presently at standard rate of 20%) have been imported from outside the UK under Temporary Admission regime and therefore the buyer must pay the import VAT at the appropriate rate on the duty inclusive hammer price.

PAYMENT

Payment will be accepted, if you are a successful bidder, by debit card

issued in the name of the Buyer by a UK bank and registered to a UK billing address; by all major UK issued credit cards issued in the name of the Buyer and registered to a UK billing address with the exception of Diners Club; by bank transfer direct into our bank account, Bank Details: NatWest, 30 Market Place, Newbury, Berkshire RG14 5AG. Account Name: Dreweatts 1759 Ltd. A/C: 62412949, Sort Code: 60-15-07, BIC: NWBKGB2L, IBAN: GB21NWBK60150762412949. The name of the bank account holder should match the name of the buyer. First time buyers who are not present at the saleroom are requested to pay by bank transfer.

Υ CITES REGULATIONS

Please note that lots marked with the symbol (Υ) in this catalogue may be subject to CITES Regulations when exported. Relevant CITES Regulations may be found at www.gov.uk/guidance/cites-imports-and-exports.

COLLECTION OR DELIVERY

Before being able to collect your purchases you are required to pay the hammer price, plus the applicable commissions, and obtain a receipt acknowledging payment. Collection of the purchased lots is at the purchaser's risk and expense and whilst Dreweatts do not provide packing and despatch service we can suggest some carriers.

Dreweatts also require that all purchased items are collected within four working days of the sale to avoid a storage charge being applied.

STORAGE CHARGES

All items not collected by 4pm, within four working days of the sale, will be automatically removed to commercial storage and subject to a minimum storage charge of £20 (plus VAT) per lot and to a further storage charge of £3 (plus VAT) per lot per part or full day thereafter. These charges will be the sole liability of the purchaser and will be billed directly to them by Sackville-West Moving & Storing; Sackville-West Moving & Storing may be willing to adjust their charges if they are instructed by the purchaser to deliver to them. On payment of all sales and storage costs, items will be available for collection by appointment from Sackville-West Moving & Storing (Andover), tel: + 44 (0) 2080 909988, email: office@sackvillewest.co.uk. These charges are set by Sackville-West Moving & Storing; we recommend that you contact them directly regarding queries relating to these charges and other questions relating to storage. Staff at the saleroom will be unable to answer questions relating to items that have been removed from the saleroom.

FURTHER INFORMATION

The colours printed in this catalogue are not necessarily a true reflection of the actual item. All weights and measures given in the catalogue should be regarded as approximate.

VALUATION SERVICES

Dreweatts provides a range of confidential and professional valuation services to private clients, solicitors, executors, estate managers, trustees and other professional partners. These services include auction valuations, insurance valuations, probate valuations, private treaty valuations, valuations for family division or for tax purposes. For more information, please see our website: www.dreweatts.com.

For directions to Donnington Priory, please see our website: www.dreweatts.com.

Parking is available at Donnington Priory in two car parks on either side of the saleroom.

INFORMATION FOR BUYERS AT PUBLIC AUCTIONS

1. **INTRODUCTION.** The following notes are intended to assist Bidders and Buyers, particularly those inexperienced or new to our salerooms. All of our auctions and sales are conducted on our printed Auction Terms and Conditions, including these Conditions of Sale and Business, which are readily available for inspection and normally accompany catalogues. Our staff will be happy to help you if there is anything you do not fully understand.

Any particular auction and/or any particular lot in an auction may be subject to different or additional terms which will be published in our auction catalogue. All auctions and sales of wines and spirits, jewellery, watches and clocks are subject to the special terms set out in the relevant Notices in relation to those items published in our auction catalogue and, in the event of any conflict or inconsistency, those special terms prevail over any other terms in our Auction Terms and Conditions. By bidding at the auction, you agree to be bound by these terms.

2. **AGENCY.** As auctioneers we usually act as agents for the seller whose identity, for reasons of confidentiality, is not normally disclosed. Accordingly if you buy at auction your contract for the item or items purchased is with the seller and not with us as the auctioneer.

3. **ESTIMATES.** Estimates are designed to help buyers gauge what sort of sum might be involved for the purchase of a particular lot. Estimates may change and should not be thought of as the sale price. The lower estimate may represent the reserve price and certainly will not be below it. Estimates do not include the Buyer's Premium or VAT (where chargeable). Estimates are prepared some time before the sale and may be altered by announcement before the sale. They are in no sense definitive.

4. **BUYER'S PREMIUM.** The Conditions of Sale forming part of our Auction Terms and Conditions require the buyer to pay a buyer's premium on the hammer price of each lot purchased. The buyer's premium is 26% of the hammer price up to and including £20,000, 25% of the hammer price from £20,001 up to and including £500,000, 20% of the hammer price from £500,001 up to and including £1,000,000, and 12.5% of the hammer price in excess of £1,000,000. VAT at the prevailing rate of 20% is added to buyer's premium and additional charges as defined below.

5. **VAT.** A theta symbol (θ) indicates that the lot is a zero rated item and therefore not subject to VAT on the buyer's premium. This applies to bound books (manuscripts and printed), unframed maps and albums. A dagger symbol (\dagger) indicates that VAT is payable by the purchaser at the standard rate (presently 20%) on the hammer price as well as being an element in the buyer's premium. This imposition of VAT is likely to be because the seller is registered for VAT within the United Kingdom and is not operating the Dealers Margin Scheme. A double dagger (\ddagger) indicates that the lot is being sold whilst subject to temporary importation and that import VAT at the reduced rate (currently 5%) calculated on the hammer price is due. (Ω) Indicates that the lot has been imported from outside the UK and that import VAT at the standard rate (currently 20%) calculated on the hammer price (inclusive of any applicable duty) is due. Lots offered subject to temporary importation (\ddagger or Ω) require relevant customs procedure to be completed prior to the property leaving Dreweatts' premises or being exported. Dreweatts will issue the instruction to a customs broker or shipper upon receipt of full payment for the lots. The import VAT charged for lots with symbols \ddagger or Ω can be refunded if Dreweatts is instructed to re-export the property or if the VAT liability is transferred to another Temporary Admission authorisation. Lots which appear without the above symbols indicate that no VAT is payable on the hammer price; this is because such lots are sold using the Auctioneers Margin Scheme and it should be noted that the VAT included within the buyer's premium is not recoverable as input tax.

6. **DESCRIPTION AND CONDITION.** Condition reports are provided on our website or upon request. The absence of a report does not imply that a lot is without imperfections. The detail in a report will reflect the estimated value of the lot. Large numbers of such requests received shortly before the sale may mean that reports cannot be provided for all lots. Members of staff are not trained restorers or conservators and, particularly for higher value lots, you should obtain an opinion from such a professional. Dreweatts is not liable for damage to gilded picture frames, plaster picture frames or picture frame glass; if a Lot is or becomes dangerous, we may dispose of it without notice to bidders in advance in any manner we see fit and will be under no liability for doing so. We recommend that you always view a lot in person.

We are dependent on information provided by the seller about a lot and whilst we may inspect lots and act reasonably in taking a general view about them we are normally unable to carry out a detailed examination and frequently no examination of lots in order to ascertain their condition in the way in which it would be wise for a buyer to do. Intending buyers have ample opportunity for inspection of goods and, therefore, accept responsibility for inspecting and investigating lots in which they may be interested and the corresponding risk should they not do so. Please note carefully the exclusion of liability for the condition of lots contained

in the Conditions of Sale. Neither the seller nor we, as the auctioneers, accept any responsibility for their condition. In particular, mechanical objects of any age are not guaranteed to be in working order. However, in so far as we have examined the goods and make a representation about their condition in the auction catalogue, we shall be liable for any defect which is not reflected in that representation and which that examination ought to have revealed to the auctioneer but which would not have been revealed to the buyer had the buyer examined the goods. Additionally, in specified circumstances lots misdescribed because they are 'deliberate forgeries' may be returned and repayment made. There is a 3 week time limit. (The expression 'deliberate forgery' is defined in our Conditions of Sale).

7. **ELECTRICAL GOODS.** These are sold as 'antiques' only and if bought for use must be checked over for compliance with safety regulations by a qualified electrician before use.

8. **EXPORT OF GOODS.** Buyers intending to export goods should ascertain (a) whether an export licence is required and (b) whether there is any specific prohibition on importing goods of that character because, e.g. they may contain prohibited materials such as ivory. Ask us if you need help.

Private overseas buyers can only receive goods free of VAT or have the VAT amount refunded if Dreweatts acts as exporter in relation to the sale, the goods are exported within 3 months of the sale and Dreweatts is in possession of adequate export documents. The VAT refunds are available for transactions exceeding £2,500. If you arrange for the goods to be picked up/delivered to you directly we will charge UK VAT at the appropriate rate and no refund will be available. Please note, buyers are responsible for completing the importation procedures as well as the payment of any relevant duty/VAT payable on importation into the destination country.

Where the purchase has been made in the business or trading name, VAT refund will be available on proof of export provided within 3 months of the sale.

9. **BIDDING.** Bidders will be required to register before the sale commences and lots will be invoiced to the name and address on the sale registration form. Bidders are required to provide a government issued identity document and a proof of address. Please enquire in advance about our arrangements for telephone bidding.

10. **COMMISSION BIDDING.** Commission bids may be left with the auctioneers indicating the maximum amount to be bid excluding buyer's premium. Dreweatts will add these bids to the auctioneers' sale book and they will be executed as cheaply as possible having regard to the reserve (if any) and competing bids. If two buyers submit identical commission bids the auctioneers may prefer the first bid received. Please enquire in advance about our arrangements for the leaving of commission bids by telephone or fax. Dreweatts does not accept liability for failing to execute commission bids, or for any errors or omissions.

11. **METHODS OF PAYMENT.** Payment will be accepted, if you are a successful bidder, by debit card issued in the name of the Buyer by a UK bank and registered to a UK billing address; by all major UK issued credit cards issued in the name of the Buyer and registered to a UK billing address with the exception of Diners Club; by bank transfer direct into our bank account, Bank Details: NatWest, 30 Market Place, Newbury, Berkshire RG14 5AG. Account Name: Dreweatts 1759 Ltd. A/C: 62412949, Sort Code: 60-15-07, BIC: NWBKGB2L, IBAN: GB21NWBK60150762412949. The name of the bank account holder should match the name of the buyer. First time buyers who are not present at the saleroom are requested to pay by bank transfer.

12. **COLLECTION AND STORAGE.** Please note what the Conditions of Sale state about collection and storage. It is important that goods are paid for and collected promptly. Any delay may involve the buyer in paying storage charges.

13. **ARTIST'S RESALE RIGHT (DROIT DE SUITE) ROYALTY CHARGES.** Under Artist's Resale Right (ARR) UK art market professionals (including, but not limited to, auctioneers, art dealers and galleries) are required to collect a royalty for works of art produced by qualifying artists each time a work is resold during the artist's lifetime and for a period up to 70 years following the artist's death. This payment is only applicable to qualifying works of art when the hammer price reaches or exceeds £1,000. The charge is calculated on the portions of the hammer price according to the following rate bands:

Royalty Rate	Portion of the hammer
4%	up to £50,000
3%	between £50,000.01 and £200,000
1%	between £200,000.01 and £350,000
0.5%	between £350,000.01 and £500,000
0.25%	in excess of £500,000

The royalty charge is capped at £12,500 per artwork. All royalty charges are passed on, no handling costs or additional fees with respect to these charges will be retained by Dreweatts. The ARR charge is VAT exempt. All items in this catalogue that are marked with λ are potentially qualifying items. The charge will be added to the buyer's invoice and must be paid before items can be released to the buyer.

TERMS OF CONSIGNMENT FOR SELLERS IN PUBLIC AUCTIONS

The sale of goods at our public auctions and a seller's relationship with us are governed by our Auction Terms and Conditions including these Terms of Consignment for Sellers in Public Auctions and our Conditions of Sale for Public Auctions. Any particular auction and/or any particular lot in an auction may be subject to different or additional terms which will be published in our auction catalogue or separately announced prior to the auction. All auctions and sales of wines and spirits, jewellery, watches and clocks are subject to the special terms set out in the relevant Notices in relation to those items published in our auction catalogue and, in the event of any conflict or inconsistency, those special terms prevail over any other terms in our Auction Terms and Conditions. Please note that our Auction Terms and Conditions including these Terms of Consignment for Sellers in Public Auctions and our Conditions of Sale for Public Auctions relate to auctions held in our salerooms and we have separate terms and conditions for our online auctions.

If you, or another person acting on your behalf, provide goods to us to sell on your behalf at one of our auctions this signifies that you agree to and will comply with our Auction Terms and Conditions including these Terms of Consignment for Sellers in Public Auctions and our Conditions of Sale for Public Auctions.

1. **INTERPRETATION.** In these Terms the words 'you', 'yours', etc. refer to the Seller and if the consignment of goods to us is made by an agent or otherwise on the Seller's behalf we assume that the Seller has authorised the consignment and that the consignor has the Seller's authority to contract. All obligations that apply to the Seller under these Terms of Consignment for Sellers in Public Auctions shall apply to the owner of the goods and their agent jointly and separately. Similarly the words 'we', 'us', etc. refer to the Auctioneers.

2. **WARRANTY.** The Seller warrants that possession in the lots can be transferred to the Buyer with good and marketable title, free from any third party right and encumbrances, claims or potential claims. The Seller has provided all information concerning the item's ownership, condition and provenance, attribution, authenticity, import or export history and of any concerns expressed by third parties concerning the same.

3. **ALL COMMISSIONS.** and fees are subject to VAT at the prevailing rate.

4. **COMMISSION.** is charged to sellers and all selling terms are available from our salerooms.

5. **REMOVAL COSTS.** Items for sale must be consigned to the saleroom by any stated deadline and at your expense. We may be able to assist you with this process but any liability incurred to a carrier for haulage charges is solely your responsibility.

6. LOSS AND DAMAGE OF GOODS

(a) Loss and Damage Warranty - Dreweatts is not authorised by the FCA to provide insurance to its clients, and does not do so. However Dreweatts for its own protection assumes liability for property consigned to it at the lower pre-sale estimate until the hammer falls. To justify accepting liability, Dreweatts makes a charge of 1.5% of the hammer price plus VAT, subject to a minimum charge of £1.50, or if unsold 1.5% of our lower estimate. The liability assumed by Dreweatts shall be limited to the lower pre-sale estimate or the hammer price if the lot is sold. Dreweatts is not liable for damage to gilded picture frames, plaster picture frames or picture frame glass; if the Lot is or becomes dangerous, we may dispose of it without notice to you in advance in any manner we see fit and will be under no liability for doing so.

(b) If the owner of the goods consigned instructs us in writing not to take such action, the goods then remain entirely at the owner's risk unless and until the property in them passes to the Buyer or they are collected by or on behalf of the owner, and clause 6 (a) is inapplicable.

7. **ILLUSTRATIONS AND PHOTOGRAPHS.** The cost of any illustrations or photographs is borne by you. The copyright in respect of such illustrations and photographs shall be the property of us, the auctioneers, as is the text of the catalogue.

8. **MINIMUM BIDS AND OUR DISCRETION.** Goods will normally be offered subject to a reserve agreed between us before the sale in accordance with clause 9. We may sell Lots below the reserve provided we account to you for the same sale proceeds as you would have received had the reserve been the hammer price. If you specifically give us a "discretion" we may accept a bid of up to 10% below the formal reserve.

9. RESERVES

(a) You are entitled to place prior to the auction a reserve on any lot consigned, being the minimum hammer price at which that lot may be sold. Reserves must be reasonable and we may decline to offer goods which in our opinion would be subject to an unreasonably high reserve (in which case goods carry the storage and loss and damage warranty charges stipulated in these Terms of Consignment).

(b) A reserve once set cannot be changed except with our consent.

(c) Where a reserve has been set which we consider unreasonably high, an unsold charge will be payable in the event that the lots fails to sell, being the agreed selling terms calculated on the reserve, LDW at 1.5% and any photographic charges.

(d) Where a reserve has been placed only we may bid on your behalf and only up to the reserve (if any) and you may in no circumstances bid personally.

(e) Reserves are not usually accepted for lots expected to realise below £100.

10. **ELECTRICAL ITEMS.** These are subject to detailed statutory safety controls. Where such items are accepted for sale you accept responsibility for the cost of

testing by external contractors. Goods not certified as safe by an electrician (unless antiques) will not be accepted for sale. They must be removed at your expense on your being notified. We reserve the right to dispose of unsafe goods as refuse, at your expense.

11. **SOFT FURNISHINGS.** The sale of soft furnishings is strictly regulated by statute law in the interests of fire safety. Goods found to infringe safety regulations will not be offered and must be removed at your expense. We reserve the right to dispose of unsafe goods as refuse, at your expense. The rights of disposal referred to in clause 10 and 11 are subject to the provisions of The Torts (Interference with Goods) Act 1977.

12. **DESCRIPTION.** Please assist us with accurate information as to the provenance, lawful import etc. of goods where this is relevant. There is strict liability for the accuracy of descriptions under modern consumer legislation and in some circumstances responsibility lies with sellers if inaccuracies occur. We will assume that you have approved the catalogue description of your lots and that your lots match those descriptions unless informed to the contrary. Where we are obliged to return the price to the buyer when the lot is a deliberate forgery under Condition 15 of the Conditions of Sale and we have accounted to you for the proceeds of sale you agree to reimburse us the sale proceeds and in any event within 7 days of our written notice to do so.

13. **UNSOLD.** If an item is unsold it may at our discretion be re-offered at a future sale. Where in our opinion an item is unsaleable you must collect such items from the saleroom promptly on being so informed. Otherwise, storage charges may be incurred. We reserve the right to charge for storage in these circumstances at a reasonable daily rate.

14. **WITHDRAWN AND BOUGHT IN ITEMS.** These are liable to incur a charge of 15% commission, 1.5 % Loss and Damage Warranty and any other costs incurred including but not limited to illustration and restoration fees all of these charges being subject to VAT on being bought in or withdrawn after being catalogued.

15. **CONDITIONS OF SALE.** You agree that all goods will be sold on our Conditions of Sale for Public Auctions. In particular you undertake that you have the right to sell the goods either as owner or agent for the owner with good and marketable title and free and clear of any third party rights or claims. You undertake to compensate us and any buyer or third party for all losses liabilities, costs and expenses suffered or incurred arising out of or in connection with any breach of this undertaking. We will also, at our discretion, and as far as practicable, confirm that an item consigned for sale does not appear on the Art Loss register, which is administered by an independent third party.

16. **DUE DILIGENCE CHECKS AND ANTI-MONEY LAUNDERING PROCEDURES.** Under the money laundering regulations in force we are required to carry out relevant due diligence checks. This includes verifying the identity of all customers we transact with as well as any beneficial owners on behalf of whom they may transact. Vendors who are unable to or refuse to supply required identification documents and proof of address will not be able to consign to Dreweatts auctions. Copies of customer due diligence checks will be stored for as long as it is necessary to satisfy legal requirements in an appropriate storage facility, which for the avoidance of doubt may include storage solely in electronic form. We reserve the right to withhold the monies owed until the vendor provides the information necessary to complete the anti-money laundering checks.

17. AUTHORITY TO DEDUCT COMMISSION AND EXPENSES AND RETAIN PREMIUM AND INTEREST

(a) You authorise us to deduct commission at the stated rate and all expenses incurred for your account from the hammer price and consent to our right to retain beneficially the premium paid by the buyer in accordance with our Conditions of Sale for Public Auctions and any interest earned on the sale proceeds until the date of settlement.

(b) In case of lots unsold at auction you authorise us at our discretion to reoffer such lots and negotiate a sale within seven days of the auction date, in which case the same charges will be payable as if such lots had been sold at auction and so far as appropriate these Terms apply.

18. **WAREHOUSING.** We disclaim all liability for goods delivered to our saleroom without sufficient sale instructions and reserve the right to make minimum warehousing charge of £10 per lot per day. Unsold lots are subject to the same charges if you do not remove them within a reasonable time of notification. If not removed within three weeks we reserve the right to sell them and defray charges from any net proceeds of sale or at your expense to consign them to the local authority for disposal.

19. **SETTLEMENT.** After sale settlement of the net sum due to you normally takes place within 28 days of the sale unless the buyer has not paid for the goods or the checks necessary under the current Money Laundering Regulations have not been completed. In this case no settlement will then be made but we will take your instructions in the light of our Conditions of Sale for Public Auctions. You authorise any sums owed by you to us on other transactions to be deducted from the sale proceeds. You must note the liability to reimburse the proceeds of sale to us as under the circumstances provided for in Condition 12 above. You should therefore bear this potential liability in mind before parting with the proceeds of sale until the expiry of 28 days from the date of sale.

CONDITIONS OF SALE FOR PUBLIC AUCTIONS

Dreweatts carries on business with bidders, buyers and all those present in the auction room prior to or in connection with a sale by auction at our salerooms on our Auction Terms and Conditions or Public Auctions including these Conditions of Sale for Public Auctions and all bidders, buyers and others participating in a public auction accept that these terms apply to the exclusion of any terms and conditions contained in any of those person’s own documents even if the same purport to provide that that person’s own or some other terms prevail. Any particular public auction and/or any particular lot in an auction may be subject to different or additional terms which will be published in our online auction catalogue. Please note that our Auction Terms and Conditions including these Conditions of Sale for Public Auctions relate to auctions held in one of our salerooms and we have separate terms and conditions for our online auctions.

1. DEFINITIONS

In these Conditions:

(a) “auctioneer” means the firm of Dreweatts or its authorised auctioneer, as appropriate;

(b) “deliberate forgery” means an imitation made with the intention of deceiving as to authorship, origin, date, age, period, culture or source but which is unequivocally described in the catalogue as being the work of a particular creator and which at the date of the sale had a value materially less than it would have had if it had been in accordance with the description;

(c) “hammer price” means the level of bidding reached (at or above any reserve) when the auctioneer brings down the hammer;

(d) “terms of consignment” means the stipulated terms and rates of commission on which Dreweatts accepts instructions from sellers or their agents;

(e) “total amount due” means the hammer price in respect of the lot sold together with any premium, Value Added Tax chargeable and any additional charges payable by a defaulting buyer under these Conditions;

(f) “sale proceeds” means the net amount due to the seller, being the hammer price of the lot sold less commission at the stated rate, Value Added Tax chargeable and any other amounts due to us by the seller in whatever capacity and however arising;

(g) “You”, “Your”, etc. refer to the buyer as identified in Condition 2.

(h) The singular includes the plural and vice versa as appropriate.

2. BIDDING PROCEDURES AND THE BUYER

(a) Bidders are required to register their particulars before bidding by completing a sale registration form and to satisfy any security arrangements before entering the auction room to view or bid;

(b) Under the money laundering regulations in force we are required to verify the identity of all customers we transact with as well as any beneficiaries on behalf of whom they may transact. Customers who are unable to or refuse to supply required identification documents and proof of address will not be able to bid in Dreweatts auctions. Copies of customer due diligence checks will be stored for as long as it is necessary to satisfy legal requirements in an appropriate storage facility which for the avoidance of doubt may include storage solely in electronic form;

(c) the maker of the highest bid accepted by the auctioneer conducting the sale shall be the buyer at the hammer price and any dispute about a bid shall be settled at the auctioneer’s absolute discretion by reoffering the Lot during the course of the auction or otherwise. The auctioneer shall act reasonably in exercising this discretion.

(d) Bidders shall be deemed to act as principals;

(e) Our right to bid on behalf of the seller is expressly reserved up to the amount of any reserve and the right to refuse any bid is also reserved.

3. INCREMENTS. Bidding increments shall be at the auctioneer’s sole discretion.

4. THE PURCHASE PRICE. The buyer shall pay the purchase price together with a premium thereon of 30% which shall include VAT on the premium at the rate imposed by law. The buyer will also be liable for any royalties payable under Droit de Suite as set out under Information for Buyers.

5. VALUE ADDED TAX. Value Added Tax on the hammer price is imposed by law on all items affixed with a dagger (†) or double dagger (‡). Value Added Tax is charged at the appropriate rate prevailing by law at the date of sale and is payable by buyers of relevant Lots. (Please refer to “Information for Buyers” for a brief explanation of the VAT position).

6. PAYMENT

(a) Immediately a Lot is sold you will:

(i) give to us, if requested, proof of identity, and

(ii) pay to us the total amount due or in such other way as is agreed by us.

(b) Any payments by you to us may be applied by us towards any sums owing from you to us on any account whatever without regard to any directions of you or your agent, whether expressed or implied.

(c) In order to comply with money laundering regulations we reserve the right to require proof of source of funds and/ or confirmation of the nature and source of wealth for all receipts of monies from clients directly or from third parties for payments on behalf of clients. Lots will only be released once we have completed necessary checks under the current Money Laundering Regulations.

7. TITLE AND COLLECTION OF PURCHASES

(a) The ownership of any Lots purchased shall not pass to you until you have made payment in full to us of the total amount due.

(b) You shall at your own risk and expense take away any lots that you have purchased and paid for not later than 3 working days following the day of the auction after which you shall be responsible for any removal, storage and insurance charges.

(c) No purchase can be claimed or removed until it has been paid for and we have completed necessary checks under the current Money Laundering Regulations.

8. REMEDIES FOR NON-PAYMENT OR FAILURE TO COLLECT PURCHASES

(a) If any Lot is not paid for in full and taken away in accordance with these Conditions or if there is any other breach of these Conditions, we, as agent for the seller and on our own behalf, shall at our absolute discretion and without prejudice to any other rights we may have, be entitled to exercise one or more of the following rights and remedies:

(i) to proceed against you for damages for breach of contract;

(ii) to rescind the sale of that Lot and/or any other Lots sold by you to you;

(iii) to resell the Lot (by auction or private treaty) in which case you shall be responsible for any resulting deficiency in the total amount due (after crediting any part payment and adding any resale costs). Any surplus so arising shall belong to the seller;

(iv) to remove, store and insure the Lot at your expense and, in the case of storage, either at our premises or elsewhere;

(v) to charge interest at a rate not exceeding 1.5% per month on the total amount due to the extent it remains unpaid for more than 3 working days after the sale;

(vi) to retain that or any other Lot sold to you until you pay the total amount due;

(vii) to reject or ignore bids from you or your agent at future auctions or to impose conditions before any such bids shall be accepted;

(viii) to apply any proceeds of sale of other Lots due or in future becoming due to you towards the settlement of the total amount due and to exercise a lien (that is a right to retain possession of) any of your property in our possession for any purpose until the debt due is satisfied.

(b) We shall, as agent for the seller and on our own behalf pursue these rights and remedies only so far as is reasonable to make appropriate recovery in respect of breach of these conditions.

9. THIRD PARTY LIABILITY. All bidders, buyers and other members of the public on our premises are there at their own risk and must note the lay-out of the accommodation and security arrangements. Accordingly neither the auctioneer nor our employees or agents shall incur liability for death or personal injury or for the safety of the property of persons visiting prior to or at a sale (except in each case as may be required by law by reason of our negligence)

10. COMMISSION BIDS. Whilst prospective buyers are strongly advised to attend the auction and are always responsible for any decision to bid for a particular Lot and shall be assumed to have carefully inspected and satisfied themselves as to its condition, we will if so instructed clearly and in writing execute bids on their behalf. Neither the auctioneer nor our employees or agents shall be responsible for any failure to do so.

Where two or more commission bids at the same level are recorded we reserve the right in our absolute discretion to prefer the first bid so made.

11. WARRANTY OF TITLE AND AVAILABILITY. The seller warrants to the auctioneer and you that the seller is the true owner of the property consigned or is properly authorised by the true owner to consign for sale and is able to transfer good and marketable title to the property free from any third party claims.

Save as expressly set out above, all other warranties, conditions or other terms which might have effect between the Seller and you, or us and you, or be implied or incorporated by statute, common law or otherwise are excluded to the fullest extent permitted by law.

12. AGENCY. The auctioneer normally acts as agent only and disclaims any responsibility for default by sellers or buyers.

13. TERMS OF SALE. The seller acknowledges that Lots are sold subject to the stipulations of these Conditions in their entirety and on the Terms of Consignment for Public Auctions as notified to the consignor at the time of the entry of the Lot.

14. DESCRIPTIONS AND CONDITION

(a) Whilst we seek to describe lots accurately, it may be impractical for us to carry out exhaustive due diligence on each lot. Prospective buyers are given ample opportunities to view and inspect before any sale and they (and any independent experts on their behalf) must satisfy themselves as to the accuracy of any description applied to a lot. Prospective buyers also bid on the understanding that, inevitably, representations or statements by us as to authorship, genuineness, origin, date, age, provenance, condition or estimated selling price involve matters of opinion. We undertake that any such opinion shall be honestly and reasonably held and accept liability for opinions given negligently or fraudulently. Subject to the foregoing neither we the auctioneer nor our employees or agents nor the seller accept liability for the correctness of such opinions and all conditions and warranties, whether relating to description, condition or quality of lots, express, implied or statutory, are hereby excluded. Dreweatts is not liable for damage to gilded picture frames, plaster picture frames or picture frame glass; if the Lot is or becomes dangerous, we may dispose of it without notice to you in advance in any manner we see fit and will be under no liability for doing so. This Condition is subject to the next following Condition concerning deliberate forgeries and applies save as provided for in paragraph 6 “information to buyers”.

(b) Private treaty sales made under these Conditions are deemed to be sales by auction for purposes of consumer legislation.

15. FORGERIES. Notwithstanding the preceding Condition, any Lot which proves to be a deliberate forgery (as defined) may be returned to us by you within 21 days of the auction provided it is in the same condition as when bought, and is accompanied by particulars identifying it from the relevant catalogue description and a written statement of defects. If we are satisfied from the evidence presented that the Lot is a deliberate forgery we shall refund the money paid by you for the Lot including any buyer’s premium provided that (1) if the catalogue description reflected the accepted view of scholars and experts as at the date of sale or

(2) you personally are not able to transfer a good and marketable title to us, you shall have no rights under this condition.

The right of return provided by this Condition is additional to any right or remedy provided by law or by these Conditions of Sale.

16. PRIVACY NOTICE. We will hold and process any personal data in relation to you in accordance with our current privacy policy, a copy of which is available on our website www.dreweatts.com/privacy-policy/.

GENERAL

17. We shall have the right at our discretion, to refuse admission to our premises or attendance at our auctions by any person.

18. (a) Any right to compensation for losses liabilities and expenses incurred in respect of and as a result of any breach of these Conditions and any exclusions provided by them shall be available to the seller and/or the auctioneer as appropriate.

(b) Such rights and exclusions shall extend to and be deemed to be for the benefit of employees and agents of the seller and/or the auctioneer who may themselves enforce them.

19. Any notice to any buyer, seller, bidder or viewer may be given by first class mail, email or Swiftmail in which case it shall be deemed to have been received by the addressee 48 hours after posting.

20. Special terms may be used in catalogue descriptions of particular classes of items in which case the descriptions must be interpreted in accordance with any glossary appearing at the commencement of the catalogue.

21. Any indulgence extended to bidders, buyers or sellers by us notwithstanding the strict terms of these Conditions or of the Terms of Consignment shall affect the position at the relevant time only and in respect of that particular concession only; in all other respects these Conditions shall be construed as having full force and effect.

22. These Conditions shall be governed by and construed in accordance with English law and the parties irrevocably submit to the exclusive jurisdiction of the English courts.

DREWEATTS

NEWBURY

Dreweatts
Donnington Priory
Newbury
Berkshire RG14 2JE
+44 (0) 1635 553 553
info@dreweatts.com

MANAGING DIRECTOR

Vicki Wonfor

DEPUTY CHAIRMAN

Will Richards

James Nicholson

LONDON

Dreweatts / Bloomsbury Auctions
16-17 Pall Mall
St James’s
London SW1Y 5LU
+44 (0) 20 7839 8880
info@bloomsburyauctions.com
info@dreweatts.com

HAMBRIDGE LANE

Dreweatts
1 Hambridge Lane
Newbury
Berkshire RG14 5TU
+44 (0) 1635 553 553
info@dreweatts.com

GROUP DEPARTMENTS

AUTOGRAPHS AND EPHEMERA

Ania Hanrahan
ahanrahan@dreweatts.com

ASIAN CERAMICS AND WORKS OF ART

Mark Newstead
Dr Yingwen Tao
Lavinia Jin
asian@dreweatts.com

BLOOMSBURY AUCTIONS BOOKS AND MANUSCRIPTS

Rupert Powell
Dido Arthur
Justin Phillips
Max Hasler
Richard Caroll
info@bloomsburyauctions.com

BRITISH AND EUROPEAN CERAMICS AND GLASS

Mark Newstead
Geoffrey Stafford Charles
interiors@dreweatts.com

BRITISH AND EUROPEAN SCULPTURE AND WORKS OF ART

Silas Currie Leigh-Wood
sculpture@dreweatts.com

CLOCKS AND SCIENTIFIC INSTRUMENTS

Leighton Gillibrand
clocks@dreweatts.com

COUNTRY SPORTING

Geoffrey Stafford Charles
gscharles@dreweatts.com

FURNITURE AND CARPETS

Ben Brown
Elaine Binning
Ashley Matthews
William Turkington
Mitchell Tompkins
furniture@dreweatts.com

HOUSE SALES AND PRIVATE COLLECTIONS

Joe Robinson
Peter Horwood
Eloise Kerr-Smiley
Arabella Methuen
housesales@dreweatts.com

JEWELLERY, SILVER, WATCHES AND OBJECTS OF VERTU

James Nicholson
Charlotte Peel
Nick Mann
Tessa Parry
jsw@dreweatts.com

LIVE STEAM AND MODEL ENGINEERING WORKS OF ART

Lucie Hobbs
transport@dreweatts.com

MODERN AND CONTEMPORARY ART

Jennie Fisher
Francesca Whitham
Will Porter (Business Development)
Anastasia Fedoseeva
pictures@dreweatts.com

MODERN DESIGN AND DECORATIVE ART

Gemma Sanders
Geoffrey Stafford Charles
Ashley Matthews
Luke McGurk
gsanders@dreweatts.com

OLD MASTER, BRITISH AND EUROPEAN ART

Brandon Lindberg
Lucy Darlington
Daniele Amesso
Isabelle Rietkerk
pictures@dreweatts.com

WINE

Mark Robertson
Caroline Shepherd
Violette Jongbloed
Dianne Wall
wine@dreweatts.com

CONSIGNMENT MANAGEMENT

Lucie Hobbs
Christy Chambers
consignments@dreweatts.com

VALUATIONS FOR PROBATE, INSURANCE AND CGT

Emma Terry
Janice Cliff
valuations@dreweatts.com



DREWEATTS

EST. 1759