

CNC TURNING CENTERS: 2018 DOOSAN 4100 LMB, FANUC OiTF CONTROL, 18" SAMCHULLY 3-JAW, 12-POSITION LIVE TURRET, PROGRAMMABLE TAILSTOCK, PRESETTER * 2013 DOOSAN PUMA 400 MB, FANUC I SERIES CONTROL, 18" 3-JAW, 12-STATION LIVE TURRET, PROGRAMMABLE TAILSTOCK, PRESETTER * 2010 DOOSAN PUMA 2600 LM, FANUC i-SERIES CONTROL, LONG BED, 10" 3-JAW, 24-STATION LIVE TURRET, PROGRAMMABLE TAIL STOCK, PRESETTER * 2007 DOOSAN PUMA 400 LMC, FANUC SERIES 21i-TB CONTROL, 20" 3-JAW, 12-STATION LIVE TURRET, PROGRAMMABLE TAIL STOCK, PRESETTER * 2007 DOOSAN PUMA 400MC, FANUC SERIES 21i-TB CONTROL, 20" 3-JAW, 12-STATION LIVE TURRET, PROGRAMMABLE TAIL STOCK, PRESETTER * 2006 DOOSAN PUMA 300 MC, FANUC SERIES 21i-TB CONTROL, 12.5" 3-JAW, 10-STATION TURRET, PROGRAMMABLE TAIL STOCK, PRESETTER * 2006 DOOSAN PUMA 240C, FANUC SERIES 21i-TB CONTROL, 10" 3-JAW, 12-STATION TURRET, PROGRAMMABLE TAIL STOCK * 2007 DOOSAN LYNX 220 LMA, FANUC Oi-TC CONTROL, 7" 3-JAW, 24-STATION LIVE TURRET, PROGRAMMABLE TAILSTOCK, PARTS PICKER * 2004 PUMA 240L, FANUC SERIES 21i-TB CONTROL, 10" 3-JAW, 10-POSITION TURRET, PROGRAMMABLE TAIL STOCK, PRESETTER * 1979 MORI SEIKI TL-3A, YASNAC CONTROL (CONVERTED TO PC DOWNLOAD), 10" 3-JAW, TAIL STOCK

CNC VERTICAL MACHINING CENTERS: 2007 MORI SEIKI DURAVERTICAL 5100, MSC-504 CONTROL, 23.5" X 53" TABLE, 30-ATC, QUAD CHIP AUGERS, THRU-SPINDLE HIGH PRESSURE COOLANT W/D30 CHIPBLASTER, TURBO CHIP CONVEYOR * 2007 DOOSAN INFRACORE LYNX 220LMA, FANUC Oi-TC CONTROL, 7" 3-JAW, 24-STATION LIVE TURRET, PROGRAMMABLE TAIL STOCK, PRESETTER, PARTS PICKER * 2006 NIKKEN CNC260 10" CNC 4TH AXIS ROTARY TABLE * 1991 MORI SEIKI MV-40B, FANUC MF-M4 CONTROL, 17.5" X 43" TABLE, 20-ATC, CAT 40 TAPER * 1990 MORI SEIKI MV-40, FANUC 10M CONTROL, 18" X 43" TABLE, 20-ATC, CAT 40 TAPER

TOOLING: (30+) LIVE TOOLHOLDERS, INCLUDING MT LIVE GEAR HOBBSERS & EPPINGER PRECI-FLEX TOOLING * (100+) CT-40 & BT-40 TOOL HOLDERS

MILLS & LATHES: BRIDGEPORT SERIES 1-2HP, 2-AXIS DRO, V.S., 9" X 42" TABLE, 1-SHOT LUBE, POWER FEED * TSUGAMI TOOLROOM LATHE, COLLET CHUCK, 3-JAW, COLLET CLOSER, 8-POSITION TURRET

SAWS: 2004 COSEN AH-320H DUAL COLUMN HORIZ. BANDSAW, 12.5" X 15" CAP, POWER FEED & CLAMP, CHIP

TERMS: 15% buyer's premium - 18% buyers premium (ONLINE). A Deposit may be required. We accept cash, cashier's check, check with bank letter of guarantee, or wire transfer, FULL PAYMENT MUST BE MADE NO LATER THAN 24 HOURS OF WINNING BID. NO credit cards will be accepted! Sales tax will be charged without tax exemption in hand on sale day!

ALL ITEMS MUST BE REMOVED BY FEBRUARY 21ST, 2024 * 4:00PM.

SEE COMPLETE TERMS AT DUCKWALLAUCTIONS.COM

DIRECTIONS: In Tulsa, between Yale & Harvard, just south of 11th St. (Route 66) on Joplin Ave. SIGNS WILL BE POSTED.



2018 DOOSAN 4100LMB



2013 DOOSAN 400MB



2010 DOOSAN 2600LM



2007 DOOSAN 400LMC



2004 PUMA 240L



2007 DURAVERTICAL 5100

ADDITIONAL PHOTOS AND VIDEOS OF CNC MACHINES @ DUCKWALLAUCTIONS.COM



2007 DOOSAN 400MC



2006 DOOSAN 300MC



LOTS OF LIVE & STD. TOOLING!!



TECHNOMARK MULTI 4/120



2004 COSEN AH-320H



GORBEL CRANE SYSTEM



2007 LYNX 220LMA



2004 PUMA 240L



INSPECTION EQUIP.



DUAL COLUMN!!

2004 COSEN AH-320H



16'X75'!!

GORBEL CRANE SYSTEM



MORI SEIKI TL-3A

BidSpotter.com
Online Bidders
 Register 48 Hours Prior To Auction
 Buyers Premium Will Apply
 See duckwallauctions.com
 For More Details



TOYOTA 5,000 LB

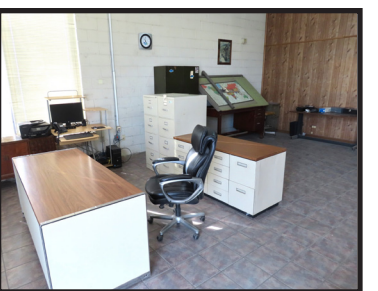


HYD. H-FRAME PRESS



CHOICE OF 2!!

ATLAS COPCO 25 HP SCREW



NICE OFFICE!!

AUGER, INFEED ROLLER CONVEYOR * KALAMAZOO 10" ABRASIVE CHOP SAW
MARKING MACHINE: TECHNOMARK MULTI 4-120 DOT PEEN MARKING MACHINE
INSPECTION: BAUSCH & LOMB M# 33-12-11 10" OPTICAL COMPARATOR * MITUTOYO DIAL BORE GAUGES & HEIGHT GAUGES * MICROMETER SETS * DIGITAL & VERNIER CALIPERS * PIN GAUGE SETS * GO-NO-GO & RING GAUGES * THREAD GAUGES * SURFACE PLATES * INSPECTION CABINETS * MUCH MORE!!
MISC.: DRILL PRESSES * BELT SANDERS * BENCH GRINDERS * H-FRAME PRESS * ARBOR PRESS * CUTTING TORCH CART * HILTI TOOLS * SOLVENT PARTS CLEANER * HAND TOOLS * ETC!
CRANES: GORBEL ~16' SPAN X 75' RUN CRANE SYSTEM, 1,000 LB. CAP, DUAL BRIDGES, (2) GORBEL G-FORCE V.S. 330LB FLOATING CABLE HOISTS, ERGO PENDANT * ABELL-HOWE, 1/4 TON JIB CRANES * ERIEZ LIFTING MAGNETS
FORKLIFT: TOYOTA 7FGU25, 5,000 LB, 4,355 HRS, 3-SECTION HI-VIS MAST, SIDE SHIFT, 48" FORKS, A/T TIRES, LPG
AIR COMPRESSORS: (2) ATLAS COPCO GA18 ROTARY SCREW, 25 HP, 180 PSIG * GREAT LAKES AIR REFRIG. AIR DRYER * 180 GAL. VERT TANK * DRESSER, APPROX. 10 HP, 2-STAGE, 80 GAL. TANK
SUPPORT: CANTILEVER MATERIAL RACKS * METAL SHELVING * PALLET RACK * TOOL CABINETS * WORKBENCHES * DUMP HOPPERS * MORE
OFFICE FURNITURE & EQUIP: FORMICA DESKS * DRAFTING TABLE * FILE CABINETS * OFFICE DIVIDERS * SHELVES * FOLDING TABLES * DISPLAY CABINET * COPIER

DUCKWALL & COMPANY, INC.
 AUCTIONEERS • APPRAISERS
 P.O. Box 580187 • Tulsa Ok 74158
 918.836.3611 OFFICE • 918.205.9033 FAX

TUESDAY * FEBRUARY 13TH * 10:00AM
STROPE MANUFACTURING, INC.
 PRECISION CNC MACHINE TOOLS



PUBLIC AUCTION
 LIVE ON-SITE W/WEBCAST BIDDING

OWNER RETIRING
 PRECISION CNC MACHINE SHOP

ATTENTION!
 PLANT MANAGER OR EQUIPMENT BUYER



For complete catalog and photos of all items, visit our website duckwallauctions.com

TUESDAY * FEBRUARY 13TH * 10:00AM
STROPE MANUFACTURING, INC.
 1240 S. JOPLIN AVE • TULSA, OK 74112

INSPECTION: MONDAY • FEBRUARY 12TH • 9:00AM-4:00PM



OWNER RETIRING - PRECISION CNC MACHINE SHOP

PUBLIC AUCTION LIVE ON-SITE W/WEBCAST

BidSpotter.com
 Online Bidders
 Register 48 Hrs Prior To Auction Buyers Premium Will Apply
 See duckwallauctions.com For More Details



WIDE VARIETY - NICE EQUIPMENT



"BUILDING & REAL ESTATE AVAILABLE FOR LEASE AFTER THE AUCTION!!!"



2 BUILDINGS!!! – OVER 14,725 SQ FT!!! – HEAVY ELECTRIC!!! A/C – HEATED SHOP SPACE
CONTACT DUCKWALL & CO. FOR DETAILS!!

DUCKWALL & COMPANY, INC.
 AUCTIONEERS • APPRAISERS
 AUCTIONEERS: DANIEL R DUCKWALL & CODY DUCKWALL

918.836.3611 OFFICE
 918.205.9033 FAX
duckwallauctions.com
 P.O. Box 580187 • Tulsa Ok 74158

BidSpotter.com
 Online Bidders
 Register 48 Hours Prior To Auction Buyers Premium Will Apply
 See duckwallauctions.com For More Details