

**FOOD**  
MACHINERY 2000



# AUCTION CATALOGUE

**MARCH**

**20  
WEDS**

**NEW DATE NEW DATE NEW DATE**

ONLINE AUCTION  
On behalf of  
**DEVON DESSERTS**

**OVER  
400  
LOTS**



**PROCESSING, PACKAGING, ANCILLARY ITEMS**

**PRE AUCTION OFFERS CONSIDERED**

**BidSpotter**  
.co.uk

Food Machinery 2000 Ltd | Monkspool House | The Stable | Woolverton | BA2 7QT | UK

TELEPHONE: + 44 UK (0) 1373 831 373 | EMAIL: sue@fm2000.co.uk

Lot 1



### SYSPAL TWO PERSONNEL SINK.

1 x Syspal s/s fully automatic sink approx. 1 m x 400 mm. Lift out: TBC

**CLICK LINK BELOW to view current price**

<https://www.bidspotter.co.uk/en-gb/auction-catalogues/food-machinery-2000/catalogue-id-fo10127/lot-ff-d7d723-35e7-4f13-940d-b10a009203dd>

Lot 2



### BATTER MIXER.

1 x Batter mixer. Fully programmable. Overall dimensions approx. 2.4 m x 1.1 m x 1.35 m. Batter mixer dims approx. 680 mm wide x 600 mm high. Lift out: TBC

**CLICK LINK BELOW to view current price**

<https://www.bidspotter.co.uk/en-gb/auction-catalogues/food-machinery-2000/catalogue-id-fo10127/lot-1f54e302-386d-4d89-87db-b10a00932255>

Lot 3



### STEPS.

1 x Set of steps approx. 610 mm x 720 mm. Distance to top step 400 mm. Lift out: TBC

**CLICK LINK BELOW to view current price**

<https://www.bidspotter.co.uk/en-gb/auction-catalogues/food-machinery-2000/catalogue-id-fo10127/lot-e1683ed6-b977-4371-977e-b10a0093adb4>

Lot 4



### MONDOMIX AU15 AERATOR.

1 x Mondomix AU15 aerator. Approx. 8 m x 550 mm x 1.6 m high. Lift out: TBC

**CLICK LINK BELOW to view current price**

<https://www.bidspotter.co.uk/en-gb/auction-catalogues/food-machinery-2000/catalogue-id-fo10127/lot-cb6957f0-fc90-48b5-80a3-b10a0095c886>

Lot 5



### HACOS CHOCOLATE MELTING TANK.

1 x Hacos chocolate melting tank. Model HSK150. Approx. 175 kg capacity. Dimensions approx. 1 m x 1 m x 1.1 m High. Lift out: TBC

**CLICK LINK BELOW to view current price**

<https://www.bidspotter.co.uk/en-gb/auction-catalogues/food-machinery-2000/catalogue-id-fo10127/lot-d5aa34f1-fdda-45c6-b298-b10a00963531>

Lot 6



### UTENSIL SINK.

1 x Utensil sink overall dimensions approx. 750 mm x 950 mm x 900 mm. Sink dims approx. 700 mm x 700 mm x 400 mm deep. Lift out: TBC

**CLICK LINK BELOW to view current price**

<https://www.bidspotter.co.uk/en-gb/auction-catalogues/food-machinery-2000/catalogue-id-fo10127/lot-eea80886-93a8-4022-92aa-b10a0096d020>

Lot 7



### UTENSIL SINK.

1 x Utensil sink overall dimensions approx. 750 mm x 950 mm x 900 mm. Sink dims approx. 700 mm x 700 mm x 400 mm deep. Lift out: TBC

**CLICK LINK BELOW to view current price**

<https://www.bidspotter.co.uk/en-gb/auction-catalogues/food-machinery-2000/catalogue-id-fo10127/lot-0f4ba02a-8575-494f-9308-b10a0096e770>

Lot 8



### S/S TABLE WITH TWO LEVELS.

1 x S/s table with two levels approx. 1m x 600 mm. Lift out: TBC

**CLICK LINK BELOW to view current price**

<https://www.bidspotter.co.uk/en-gb/auction-catalogues/food-machinery-2000/catalogue-id-fo10127/lot-2eb-d3c6c-9f6e-4186-ad0d-b10a00979c64>

Lot 9



#### AFT POT FEEDER.

1 x Western Mechanical Handling AFT pot feeder. Variable speed. Approx. 1.2 m x 1.2 m x 2 m. Lift out: TBC

**CLICK LINK BELOW to view current price**

<https://www.bidspotter.co.uk/en-gb/auction-catalogues/food-machinery-2000/catalogue-id-fo10127/lot-4ce64c3b-b4af-4821-a43b-b10a009812b8>

Lot 10



#### AFT CRUMB PUMP.

1 x AFT crumb pump approx. 700 mm x 600 mm x overall height 1.4 m. Dosing height approx. 1.3 m high. Lift out: TBC

**CLICK LINK BELOW to view current price**

<https://www.bidspotter.co.uk/en-gb/auction-catalogues/food-machinery-2000/catalogue-id-fo10127/lot-6e5ee309-197c-4759-bad4-b10a00985f94>

Lot 11



#### AFT CRUMB DEPOSITOR.

1 x AFT Crumb depositor onto the line. Lift out: TBC

**CLICK LINK BELOW to view current price**

<https://www.bidspotter.co.uk/en-gb/auction-catalogues/food-machinery-2000/catalogue-id-fo10127/lot-6800c1ea-1cd3-42f8-9c29-b10a0098b570>

Lot 12



#### AFT TWIN DEPOSITOR.

1 x AFT twin depositor. S/s. Mobile. Approx. 700 mm wide x 900 mm deep x 1.8 m high. Lift out: TBC

**CLICK LINK BELOW to view current price**

<https://www.bidspotter.co.uk/en-gb/auction-catalogues/food-machinery-2000/catalogue-id-fo10127/lot-1121fd8e-9576-47c0-bc3e-b10a00991b67>

Lot 13



**INLINE CRUMB STAMPER & DEPOSITOR.**

1 x Inline crumb stamper with twin AFT depositing head. Overall length is approx. 4.9 m long x 900 mm wide. Lift out: TBC

**CLICK LINK BELOW to view current price**

<https://www.bidspotter.co.uk/en-gb/auction-catalogues/food-machinery-2000/catalogue-id-fo10127/lot-9ae0c688-5ff9-4355-8724-b10a009985ec>

Lot 14



**TANK.**

1 x Mobile single skin tank. Dims approx. 600 mm x 600 mm high. Overall height approx. 1.1 m. Lift out: TBC

**CLICK LINK BELOW to view current price**

<https://www.bidspotter.co.uk/en-gb/auction-catalogues/food-machinery-2000/catalogue-id-fo10127/lot-3ce043f3-fa30-4ea2-8c7c-b10a0099e636>

Lot 15



**MASO PUMP.**

1 x Maso pump approx. 800 mm x 200 mm. Lift out: TBC

**CLICK LINK BELOW to view current price**

<https://www.bidspotter.co.uk/en-gb/auction-catalogues/food-machinery-2000/catalogue-id-fo10127/lot-72a55596-ac04-4b98-a813-b10a009a287a>

Lot 16



**SPOONER OVEN.**

1 x Spooner oven 1.1m belt width 19 m cooking length. Product height approx. 150 mm. with 2 burners. Has an infeed system with belt of 4.4 m long and 170 mm wide. Lift out: TBC

**CLICK LINK BELOW to view current price**

<https://www.bidspotter.co.uk/en-gb/auction-catalogues/food-machinery-2000/catalogue-id-fo10127/lot-ccc-6fa05-29a6-4cdd-9057-b10a009deff1>

Lot 17



**NITROGEN FREEZING TUNNEL.**

1 x Nitrogen freezing tunnel approx. 1.2 m wide. Overall dims approx. 10.5 m long. Lift out: TBC

**CLICK LINK BELOW to view current price**

<https://www.bidspotter.co.uk/en-gb/auction-catalogues/food-machinery-2000/catalogue-id-fo10127/lot-d6b33a26-9ce5-461d-b9b1-b10a009e3413>

Lot 18



**EXIT FEEDING CONVEYOR.**

1 x Exit feeding conveyor with 90 deg right hand bend. Running 3 m straight bending to the right 3 m and then another right hand of 90 degree for 1 m. In the middle are 4 air nozzles for pushing each product onto the 4 lane depositing line. Lift out: TBC

**CLICK LINK BELOW to view current price**

<https://www.bidspotter.co.uk/en-gb/auction-catalogues/food-machinery-2000/catalogue-id-fo10127/lot-ba4a1cc9-eea3-4813-9281-b10a009f8799>

Lot 19



**4- LANE DEPOSITING LINE.**

1 x 4-lane depositing line with AFT depositors. Each lane has a belt width of approx. 700 mm. The first depositors is for liquid. The second depositing system is for ice cream. The third depositing system is for liquid and fruit and forth is for fruit and the fifth is for sprinkles and swirls.Lift out: TBC

**CLICK LINK BELOW to view current price**

<https://www.bidspotter.co.uk/en-gb/auction-catalogues/food-machinery-2000/catalogue-id-fo10127/lot-bf01f008-702f-4123-8c61-b10a00a0cd7f>

Lot 20



**ACCESS PLATFORM STEPS.**

1 x Access platform steps approx. 1.1 m to top step. Overall dims approx. 3 m x 600 mm wide x 2 m high. Lift out: TBC

**CLICK LINK BELOW to view current price**

<https://www.bidspotter.co.uk/en-gb/auction-catalogues/food-machinery-2000/catalogue-id-fo10127/lot-494fb144-3d37-4c71-a210-b10a00a1a5ec>

Lot 21



**SYSPAL SINK.**

1 x Syspal automatic sink. Approx. 1 m x 500 mm. Lift out: TBC

**CLICK LINK BELOW to view current price**

<https://www.bidspotter.co.uk/en-gb/auction-catalogues/food-machinery-2000/catalogue-id-fo10127/lot-ad40553f-fa84-47e4-a1e6-b10a00a25599>

Lot 22



**UTENSIL SINK.**

1 x Utensil sink. Overall dims approx. 3 m x 900 mm. Sink dims approx. 700 mm x 1.2 m long x 400 mm deep. Lift out: TBC

**CLICK LINK BELOW to view current price**

<https://www.bidspotter.co.uk/en-gb/auction-catalogues/food-machinery-2000/catalogue-id-fo10127/lot-0e3533d-228b-4e43-b148-b10a00a2c7bd>

Lot 23



**CATTA 27 ICE CREAM MACHINE.**

1 x Catta 27 ice cream machine with 2 holding tanks. All s/s. Complete system with controls. Approx. 1 m x 1.8 m. The holdings tanks are approx. 700 mm diameter x 800 mm high and 500 mm diameter x 600 mm high. Lift out: TBC

**CLICK LINK BELOW to view current price**

<https://www.bidspotter.co.uk/en-gb/auction-catalogues/food-machinery-2000/catalogue-id-fo10127/lot-d1491885-82f6-49e4-9ba3-b10a00a2fa16>

Lot 24



**SIDMAN ICE CREAM MACHINE.**

1 x Sidman model freezer FK150 DE Ice cream machine. With holding tank, pump and refrigeration unit to keep the product cold. Dimensions approx. 1 m x 2 m x 1.7 m high. Lift out: TBC

**CLICK LINK BELOW to view current price**

<https://www.bidspotter.co.uk/en-gb/auction-catalogues/food-machinery-2000/catalogue-id-fo10127/lot-10a23bd0-0251-41e6-a1ef-b10a00a307da>

Lot 25



### TANIS AERATION MACHINE.

1 x Tanis aerating machine. With buffer tank and pump underneath. Lift out: TBC

**CLICK LINK BELOW to view current price**

<https://www.bidspotter.co.uk/en-gb/auction-catalogues/food-machinery-2000/catalogue-id-fo10127/lot-7b5969a3-31f2-4e5d-8a47-b10a00a314df>

Lot 29



### FRIGOSCANDIA GYROFREEZE COMPACT SPIRAL FREEZER.

1 x Frigoscandia GyroFreeze model 42 Compact spiral freezer. 18-tier. Approx. 400 mm wide belt. Stackable belt. Belt height approx. 100 mm. Infeed at the bottom right. Outfeed top right. Approx. footprint is 4.6 m x 6 m x 4.5 m high. Lift out: TBC

**CLICK LINK BELOW to view current price**

<https://www.bidspotter.co.uk/en-gb/auction-catalogues/food-machinery-2000/catalogue-id-fo10127/lot-04e158ca-05f3-488e-8f59-b10a00a4646b>

Lot 30



### UTENSIL SINK.

1 x Utensil sink overall dims approx. 1.3 m x 870 mm x 1.1 m high. Sink dims approx. 1.2 m x 700 mm x 400 mm deep. Lift out: TBC

**CLICK LINK BELOW to view current price**

<https://www.bidspotter.co.uk/en-gb/auction-catalogues/food-machinery-2000/catalogue-id-fo10127/lot-04c895a5-273e-4a15-ba08-b10a00a4d2f9>

Lot 31



### OUTFEED CONVEYORISED SYSTEM.

1 x Outfeed conveyorised system on s/s frame. S/s frame is approx. 2 m x 2.1 m x 3 m high. Lift out: TBC

**CLICK LINK BELOW to view current price**

<https://www.bidspotter.co.uk/en-gb/auction-catalogues/food-machinery-2000/catalogue-id-fo10127/lot-a1c7c488-0f7a-42f4-b1f4-b10a00a54152>



Lot 32



### 3-TIER TRAYING UP UNIT.

1 x 3-tier traying up unit. Approx. 1.9 m wide x 400 mm x 2.1 m high. Lift out: TBC

**CLICK LINK BELOW to view current price**

<https://www.bidspotter.co.uk/en-gb/auction-catalogues/food-machinery-2000/catalogue-id-fo10127/lot-34368624-11cd-4e5e-a991-b10a00a5e2aa>

Lot 33



### CONVERGING CONVEYOR.

1 x Single lane converging conveyor, splitting into twin lane. Overall dims approx. 1.9 m x 650 mm. Single lane belt width approx. 120 mm. Converging belt approx. 380 mm wide. Lift out: TBC

**CLICK LINK BELOW to view current price**

<https://www.bidspotter.co.uk/en-gb/auction-catalogues/food-machinery-2000/catalogue-id-fo10127/lot-bae36690-6780-4ca4-a983-b10a00a6dab8>

Lot 34



### TECNOVAC CRONOS TRAY LIDDING MACHINE.

1 x Tecnovac type Cronos tray lidding machine. Full touch screen controls. 2-across. 12 pots at a time. Overall dims approx. 4.2 m x 1 m x 2.1 m high. Lift out: TBC

**CLICK LINK BELOW to view current price**

<https://www.bidspotter.co.uk/en-gb/auction-catalogues/food-machinery-2000/catalogue-id-fo10127/lot-44f813ce-6d40-45c9-acc7-b10a00a7eb9a>

Lot 35



### TRAYING UP DEVICE.

1 x Traying up device. Pushing up 2-products at a time to go into a cardboard sleeve. Overall dims approx. 2.5 m x 600 mm x 900 mm high. 300 mm belt width. Lift out: TBC

**CLICK LINK BELOW to view current price**

<https://www.bidspotter.co.uk/en-gb/auction-catalogues/food-machinery-2000/catalogue-id-fo10127/lot-58922b22-54ae-4ab3-b9d0-b10a00a89996>

Lot 36



### BRADMAN LAKE SL90 AUTO CARTONER.

1 x Bradman Lake SL90 fully automatic end load cartoning machine. Variable speed. Approx. 7 m x 1.8 x 2 m high. Lift out: TBC

**CLICK LINK BELOW to view current price**

<https://www.bidspotter.co.uk/en-gb/auction-catalogues/food-machinery-2000/catalogue-id-fo10127/lot-ddc-7c34b-8794-480c-ae68-b10a00a9a1bd>

Lot 37



### 90 DEGREE BEND CONVEYOR.

1 x 90 degree bend conveyor. Approx. 2.6 m x 1.3 m wide. Belt width 280 mm. Lift out: TBC

**CLICK LINK BELOW to view current price**

<https://www.bidspotter.co.uk/en-gb/auction-catalogues/food-machinery-2000/catalogue-id-fo10127/lot-9d877224-dd05-4829-b79e-b10a00aa1a94>

Lot 38



### LOMA 6000 CHECKWEIGHER.

1 x Loma 6000 checkweigher approx. 1.35 m long x 750 mm x 1 m high. Checkweigher length 300 mm. Belt width 250 mm. Lift out: TBC

**CLICK LINK BELOW to view current price**

<https://www.bidspotter.co.uk/en-gb/auction-catalogues/food-machinery-2000/catalogue-id-fo10127/lot-ef-939d1-e250-48fd-b081-b10a00aacd61>

Lot 39



### ADPAK CONVEYOR.

1 x Adpak conveyor with mount for inkjet coder. Approx. 1.8 m x 400 mm x 870 mm. Belt width 280 mm. Lift out: TBC

**CLICK LINK BELOW to view current price**

<https://www.bidspotter.co.uk/en-gb/auction-catalogues/food-machinery-2000/catalogue-id-fo10127/lot-abe47b2b-26ca-49df-9c5b-b10a00ab7081>

Lot 40



#### ADPAK CONVEYOR.

1 x Adpak conveyor. With mounting for inkjet coder. Approx. 3 m x 370 mm x 900 mm high. Lift out: TBC

**CLICK LINK BELOW to view current price**

<https://www.bidspotter.co.uk/en-gb/auction-catalogues/food-machinery-2000/catalogue-id-fo10127/lot-c4fefc21-e1ce-4dad-931f-b10a00abf7c4>

Lot 41



#### ADPAK SLEEVE WRAPPING MACHINE.

1 x Adpak BVM sleeve wrapping machine. The unit stacks product and wraps a sleeve around the product. With full process controls. Jaw size approx. 700 mm. Overall dims approx. 3 m x 2.1 m x 1.85 m high. Lift out: TBC

**CLICK LINK BELOW to view current price**

<https://www.bidspotter.co.uk/en-gb/auction-catalogues/food-machinery-2000/catalogue-id-fo10127/lot-0ae45b-97c0-4546-8f20-b10a00acf1af>

Lot 42



#### 90 DEGREE BEND CONVEYOR.

1 x 90 degree bend conveyor approx. 1.2 m x 1.2 m. With 600 mm wide belt. Lift out: TBC

**CLICK LINK BELOW to view current price**

<https://www.bidspotter.co.uk/en-gb/auction-catalogues/food-machinery-2000/catalogue-id-fo10127/lot-ba430193-db52-44b3-9a36-b10a00ad5a64>

Lot 43



#### ADPAK BVM HEAT TUNNEL.

1 x Adpak BVM heat tunnel aperture size approx. 650 mm x 300 mm. Belt width approx. 650 mm. Overall dimensions approx. 1.7 m x 1.3 m x 1.7 m high. Lift out: TBC

**CLICK LINK BELOW to view current price**

<https://www.bidspotter.co.uk/en-gb/auction-catalogues/food-machinery-2000/catalogue-id-fo10127/lot-29254aee-09da-4225-beb3-b10a00aeba24>

Lot 44



#### ADPAK CONVEYOR.

1 x Adpak conveyor approx. 1.8 m x 700 mm x 800 mm high. Belt width 530 mm. Lift out: TBC

**CLICK LINK BELOW to view current price**

<https://www.bidspotter.co.uk/en-gb/auction-catalogues/food-machinery-2000/catalogue-id-fo10127/lot-dc67433a-c053-43d8-9aff-b10a00afd431>

Lot 45



#### MECTEK SIDE LABELLER.

1 x Mectek side box labeller. Mobile. Dims approx. 1.3 m x 600 mm x 1.4 m high. Lift out: TBC

**CLICK LINK BELOW to view current price**

<https://www.bidspotter.co.uk/en-gb/auction-catalogues/food-machinery-2000/catalogue-id-fo10127/lot-269afc43-a180-408b-b368-b10a00b11b3e>

Lot 46



#### LINX 5900 INKJET PRINTER.

1 x Linx 5900 inkjet printer sat on s/s mobile cabinet. Approx. 550 mm x 600 mm x 1.3 m. Lift out: TBC

**CLICK LINK BELOW to view current price**

<https://www.bidspotter.co.uk/en-gb/auction-catalogues/food-machinery-2000/catalogue-id-fo10127/lot-738e52b9-6c4f-4e28-af77-b10a00b21ca2>

Lot 47



#### SYSPAL SINGLE AUTO SINK WITH PAPER TOWEL AND SOAP

1 x Sypsal single automatic sink. With paper towel and soap dispenser. Approx. 550 mm x 400 mm. Lift out: TBC

**CLICK LINK BELOW to view current price**

<https://www.bidspotter.co.uk/en-gb/auction-catalogues/food-machinery-2000/catalogue-id-fo10127/lot-47aefd89-16d7-4a27-accb-b10a00b2f6b8>

Lot 48



S/S TABLE.

1 x S/s table approx. 900 mm x 600 mm. Lift out: TBC

**CLICK LINK BELOW to view current price**

<https://www.bidspotter.co.uk/en-gb/auction-catalogues/food-machinery-2000/catalogue-id-fo10127/lot-a54ea25f-5714-4870-8781-b10a00b36e21>

Lot 49



S/S TABLE.

1 x S/s table approx. 2 m x 500 mm. Lift out: TBC

**CLICK LINK BELOW to view current price**

<https://www.bidspotter.co.uk/en-gb/auction-catalogues/food-machinery-2000/catalogue-id-fo10127/lot-c1df-fa31-3267-48e2-9869-b10a00b3baa1>

Lot 50



S/S TABLE.

1 x S/s table approx. 1.8 m x 550 mm. Lift out: TBC

**CLICK LINK BELOW to view current price**

<https://www.bidspotter.co.uk/en-gb/auction-catalogues/food-machinery-2000/catalogue-id-fo10127/lot-a1c88556-e476-4cbe-a3df-b10a00b4085c>

Lot 51



S/S TABLE.

1 x S/s table approx. 550 mm x 550 mm. Lift out: TBC

**CLICK LINK BELOW to view current price**

<https://www.bidspotter.co.uk/en-gb/auction-catalogues/food-machinery-2000/catalogue-id-fo10127/lot-909a251c-1d58-41a3-afe0-b10a00b4581f>

Lot 52



S/S TABLE.

1 x S/s table approx. 550 mm x 550 mm. Lift out: TBC

CLICK LINK BELOW to view current price

<https://www.bidspotter.co.uk/en-gb/auction-catalogues/food-machinery-2000/catalogue-id-fo10127/lot-e3b045d8-0ec7-4af1-8646-b10a00b46d21>

Lot 53



S/S TABLE.

1 x S/s table approx. 550 mm x 550 mm. Lift out: TBC

CLICK LINK BELOW to view current price

<https://www.bidspotter.co.uk/en-gb/auction-catalogues/food-machinery-2000/catalogue-id-fo10127/lot-4ff-8baf-43a1-a312-b10a00b491fe>

Lot 54



S/S TABLE.

1 x S/s table approx. 600 mm x 600 mm. Lift out: TBC

CLICK LINK BELOW to view current price

<https://www.bidspotter.co.uk/en-gb/auction-catalogues/food-machinery-2000/catalogue-id-fo10127/lot-c2592025-28d6-4a86-be8c-b10a00b4bb66>

Lot 55



S/S COOKING VESSEL.

1 x All s/s Kay Engineering cooking vessel with high shear mixer. Approx. 545 litre capacity. With side wall scrape and bottom centre discharge. Dims approx. 1.14 m internal diameter x 800 mm deep. Overall dims approx. 1.2 m 1.2 m x 2.1 m high. Comes with gantry approx. 1.4 m x 1.7 m x 2 m high. Lift out: TBC

CLICK LINK BELOW to view current price

<https://www.bidspotter.co.uk/en-gb/auction-catalogues/food-machinery-2000/catalogue-id-fo10127/lot-3dde4435-d2f2-4b21-8d82-b10a00b60795>

Lot 56



### COOKING VESSEL.

1 x Kays engineering S/S cooking tank with side wall scrape. 545 litre capacity. Approx. dims 1200 mm x 1200 mm x 2100 mm. Internal bowl dimensions approx. 1150 mm diameter x 800 mm deep. With gantry approx. 1.1 m x 1.2 m. Lift out: TBC

**CLICK LINK BELOW to view current price**

<https://www.bidspotter.co.uk/en-gb/auction-catalogues/food-machinery-2000/catalogue-id-fo10127/lot-389ef4e3-6ce9-4ddf-8747-b10a00ba9615>

Lot 57



### ALFA LAVAL HEAT EXCHANGER MS6-8M.

1 x Alfa Laval heat exchanger. Model MS6-8M. Approx. dims 330 mm x 900 mm x 1000 mm. Lift out: TBC

**CLICK LINK BELOW to view current price**

<https://www.bidspotter.co.uk/en-gb/auction-catalogues/food-machinery-2000/catalogue-id-fo10127/lot-1f15d82e-b147-40bc-832f-b10a00bbd41b>

Lot 58



### MASO PUMP.

1 x Maso pump model SP5-2. Lift out: TBC

**CLICK LINK BELOW to view current price**

<https://www.bidspotter.co.uk/en-gb/auction-catalogues/food-machinery-2000/catalogue-id-fo10127/lot-313f1aef-5de2-4b8f-90d3-b10a00bc1cf6>

Lot 59



### S/S TANK.

1 x S/s single skin tank with high shear mixer. With full controls. Dimensions approx. 800 mm x 1.7 m. Internal dimensions approx. 750 mm x 700 mm deep. Lift out: TBC

**CLICK LINK BELOW to view current price**

<https://www.bidspotter.co.uk/en-gb/auction-catalogues/food-machinery-2000/catalogue-id-fo10127/lot-9323567e-f58e-4e4d-8689-b10a00bdf6de>

Lot 60



#### PUMP.

1 x Pump approx. 300 mm x 300 mm. Lift out: TBC

**CLICK LINK BELOW to view current price**

<https://www.bidspotter.co.uk/en-gb/auction-catalogues/food-machinery-2000/catalogue-id-fo10127/lot-c8b-ce7b8-5fb5-49c2-b38f-b10a00be2bd9>

Lot 61



#### S/S APV TANK.

1 x S/s APV tank approx. 50 gallon capacity. Approx. 800 mm x 1.45 m high. Internal dimensions approx. 760 mm x 650 mm deep. Lift out: TBC

**CLICK LINK BELOW to view current price**

<https://www.bidspotter.co.uk/en-gb/auction-catalogues/food-machinery-2000/catalogue-id-fo10127/lot-69bf8e64-d6fe-4e3c-9ebd-b10a00beb517>

Lot 62



#### DIAPHRAGM PUMP.

1 x Diaphragm pump approx. 500 mm x 300 mm. Lift out: TBC

**CLICK LINK BELOW to view current price**

<https://www.bidspotter.co.uk/en-gb/auction-catalogues/food-machinery-2000/catalogue-id-fo10127/lot-db-7bf55-1657-4646-8a04-b10a00bf40f7>

Lot 63



#### SINGLE KNEE OPERATED SINK.

1 x Syspal single knee operated sink. Dims approx. 570 mm x 420 mm. Lift out: TBC

**CLICK LINK BELOW to view current price**

<https://www.bidspotter.co.uk/en-gb/auction-catalogues/food-machinery-2000/catalogue-id-fo10127/lot-a6ca3829-2c4e-4562-a203-b10a00bfa012>



Lot 64



### HOSE REEL AND STAND.

1x Hose reel and stand. Approx. 400 mm x 1.2 m high. Lift out: TBC

**CLICK LINK BELOW to view current price**

<https://www.bidspotter.co.uk/en-gb/auction-catalogues/food-machinery-2000/catalogue-id-fo10127/lot-38f15397-ea67-4de1-a2ce-b10a00bfe876>

Lot 65



### S/S CONVEYOR.

1 x S/s conveyor approx. 2.4 m long x 350 mm wide. Lift out: TBC

**CLICK LINK BELOW to view current price**

<https://www.bidspotter.co.uk/en-gb/auction-catalogues/food-machinery-2000/catalogue-id-fo10127/lot-bd12f-7cfb74-4213-9618-b10a00c0a525>

Lot 66



### SVEBA DAHLEN OVEN

1 x Sveba Dahlen electric oven with 4 electrical banks of heating zones. Dimensions approx. 20 m long x 2.8 m wide belt. Product gap approx. 150 mm. With feeding system. With outfeed system. Lift out: TBC

**CLICK LINK BELOW to view current price**

<https://www.bidspotter.co.uk/en-gb/auction-catalogues/food-machinery-2000/catalogue-id-fo10127/lot-d47b5add-e99c-4fb0-94d5-b10a00c1cd07>

Lot 67



### 25 M LONG CONVEYOR.

1 x Conveyor approx. 25 m long x 250 mm belt. Lift out: TBC

**CLICK LINK BELOW to view current price**

<https://www.bidspotter.co.uk/en-gb/auction-catalogues/food-machinery-2000/catalogue-id-fo10127/lot-f36f-4da9-4f75-4a95-8d98-b10a00c2157a>

Lot 68



### CONVEYOR.

1 x Western Mechanical Handling conveyor with Intralox belt. Approx. 3.4 m long x 500 mm wide. Lift out: TBC

**CLICK LINK BELOW to view current price**

<https://www.bidspotter.co.uk/en-gb/auction-catalogues/food-machinery-2000/catalogue-id-fo10127/lot-eb6ea253-c806-46dd-8680-b10a00c47420>

Lot 69



### FRIGOSCANDIA GYRO-COMPACT SPIRAL FREEZER.

1 x Frigoscandia all s/s GyroCompact self stacking spiral freezer. Approx. 600 mm wide belt. Approx. 950 mm product gap. Approx. 4.8 m wide. Configuration is infeed bottom right and outfeed top right. Lift out: TBC

**CLICK LINK BELOW to view current price**

<https://www.bidspotter.co.uk/en-gb/auction-catalogues/food-machinery-2000/catalogue-id-fo10127/lot-fea06f61-24c6-47a6-ae61-b10a00c89fc5>

Lot 70



### S/S ACCESS GANTRY AND CONVEYORS.

1 x S/s access gantry return with steps and 90 degree bend conveyor to the right. With straight conveyor. Overall footprint is approx. 8 m x working height approx. 2.2 m to the platform. Lift out: TBC

**CLICK LINK BELOW to view current price**

<https://www.bidspotter.co.uk/en-gb/auction-catalogues/food-machinery-2000/catalogue-id-fo10127/lot-3231ed96-19c2-4629-b1ce-b10a00ca1229>

Lot 71



### SPIRAL DE-ELEVATOR.

1 x Spiral de-elevator. All s/s. 300 mm belt width. Diameter approx. 2 m. Out-feed height 900 mm. Infeed height 3.2 m. Lift out: TBC

**CLICK LINK BELOW to view current price**

<https://www.bidspotter.co.uk/en-gb/auction-catalogues/food-machinery-2000/catalogue-id-fo10127/lot-aa2922fc-b982-46d7-964f-b10a00ca46da>

Lot 72



### CONVEYOR.

1 x Conveyor. Approx. 2.2 m long x 200 mm wide belt. Lift out: TBC

**CLICK LINK BELOW to view current price**

<https://www.bidspotter.co.uk/en-gb/auction-catalogues/food-machinery-2000/catalogue-id-fo10127/lot-a4e1671b-9ba7-46f3-ade5-b10a00cb56fb>

Lot 73



### 2-PERSONNEL SINK.

1 x 2-personnel fully automatic sink. Approx. 1.5 m x 400 mm. Lift out: TBC

**CLICK LINK BELOW to view current price**

<https://www.bidspotter.co.uk/en-gb/auction-catalogues/food-machinery-2000/catalogue-id-fo10127/lot-d0798c7a-aac7-4910-a8ec-b10a00cbbc14>

Lot 74



### S/S SINK.

1 x S/s fully automatic sink approx. 1 m x 400 mm. Lift out: TBC

**CLICK LINK BELOW to view current price**

<https://www.bidspotter.co.uk/en-gb/auction-catalogues/food-machinery-2000/catalogue-id-fo10127/lot-53ba411e-9cfd-4407-965a-b10a00cc5898>

Lot 75



### S/S JACKETED MIXING TANK.

1 x Smart Manufacturing s/s jacketed mixing tank. Electrically heated. With agitator. Bottom centre discharge. Dimensions approx. 900 mm x 900 mm. Internally approx. 450 mm x 700 mm. Lift out: TBC

**CLICK LINK BELOW to view current price**

<https://www.bidspotter.co.uk/en-gb/auction-catalogues/food-machinery-2000/catalogue-id-fo10127/lot-b6ad253d-eb7f-4735-9a02-b10a00ccee47>

Lot 76



### RABAK 2232 FILLING MACHINE. \*

1 x Rabak 2232 filling machine. Dimensions approx. 1.2 m x 1 m x 1.1 m high.  
Lift out: TBC

**CLICK LINK BELOW to view current price**

<https://www.bidspotter.co.uk/en-gb/auction-catalogues/food-machinery-2000/catalogue-id-fo10127/lot-3e115a13-67b6-4c45-96a9-b10a00ce709f>

Lot 77



### COOKING VESSEL.

1 x Complete jacketed cooking vessel. Approx 1000 litre. Side wall scrape, propeller mixer. All S/S 1.2 m diameter 2.1 m high. Internal dimensions approx. 1.2 m x 850 mm deep. Lift out: TBC

**CLICK LINK BELOW to view current price**

<https://www.bidspotter.co.uk/en-gb/auction-catalogues/food-machinery-2000/catalogue-id-fo10127/lot-dced161-840f-4796-a3eb-b10a00cf2119>

Lot 78



### PE PUMP.

1 x PE pump. CS40-210-4-3. Lift out: TBC

**CLICK LINK BELOW to view current price**

<https://www.bidspotter.co.uk/en-gb/auction-catalogues/food-machinery-2000/catalogue-id-fo10127/lot-b4fa42ac-39f8-4249-8a15-b10a00cf54a8>

Lot 79



### COOKING VESSEL.

1 x Complete jacketed cooking vessel. Approx 1000 litre. Side wall scrape, propeller mixer. All S/S 1.2 m diameter 2.1 m high. Internal dimensions approx. 1.2 m x 850 mm deep. Lift out: TBC

**CLICK LINK BELOW to view current price**

<https://www.bidspotter.co.uk/en-gb/auction-catalogues/food-machinery-2000/catalogue-id-fo10127/lot-f52fe3b9-dcbe-4467-98a1-b10a00cf9b68>

Lot 80



### CATTA 27 HOMOGENISER.

1 x Catta 27 homogeniser. Approx. 1.1 m x 1.3 m x 2 m. Lift out: TBC

**CLICK LINK BELOW to view current price**

<https://www.bidspotter.co.uk/en-gb/auction-catalogues/food-machinery-2000/catalogue-id-fo10127/lot-baddfc48-b2f7-4902-a952-b10a00cfd57>

Lot 81



### PUMP.

1 x Inline pump. Lift out: TBC

**CLICK LINK BELOW to view current price**

<https://www.bidspotter.co.uk/en-gb/auction-catalogues/food-machinery-2000/catalogue-id-fo10127/lot-71111742-18d5-4b60-bc7d-b10a00d025ab>

Lot 82



### ALFA LAVAL HEAT EXCHANGER.

1 x Alfa Laval heat exchanger. Model M6-MFHC. Approx. 330 mm x 400 mm x 1 m high. Lift out: TBC

**CLICK LINK BELOW to view current price**

<https://www.bidspotter.co.uk/en-gb/auction-catalogues/food-machinery-2000/catalogue-id-fo10127/lot-2ab-be41c-f919-48f9-8381-b10a00d0b785>

Lot 83



### MIXING TANK.

1 x All s/s mixing tank. Approx 1000 litre. Side wall scrape mixing. Approx. 1.2 m diameter 2.1 m high. Internal dimensions approx. 1.2 m x 850 mm deep. Lift out: TBC

**CLICK LINK BELOW to view current price**

<https://www.bidspotter.co.uk/en-gb/auction-catalogues/food-machinery-2000/catalogue-id-fo10127/lot-01033689-933e-42b1-b4a0-b10a00d0f49f>

Lot 84



#### PUMP.

1 x Pump ALC1-D/62 4 kw. Lift out: TBC

**CLICK LINK BELOW to view current price**

<https://www.bidspotter.co.uk/en-gb/auction-catalogues/food-machinery-2000/catalogue-id-fo10127/lot-c21872f1-1d5c-4f6e-911a-b10a00d12b3e>

Lot 85



#### MIXING TANK.

1 x All s/s mixing tank. Approx 1000 litre. Side wall scrape mixing. Approx. 1.2 m diameter 2.1 m high. Internal dimensions approx. 1.2 m x 850 mm deep. Lift out: TBC

**CLICK LINK BELOW to view current price**

<https://www.bidspotter.co.uk/en-gb/auction-catalogues/food-machinery-2000/catalogue-id-fo10127/lot-64de7338-722c-458e-bf25-b10a00d15c7a>

Lot 86



#### PUMP.

1 x Pump SPS-2. Lift out: TBC

**CLICK LINK BELOW to view current price**

<https://www.bidspotter.co.uk/en-gb/auction-catalogues/food-machinery-2000/catalogue-id-fo10127/lot-40f01022-15ee-472b-a2ed-b10a00d18323>

Lot 87



#### MDM PUMP.

1 x MDM pump. Model D4/7.5. Lift out: TBC

**CLICK LINK BELOW to view current price**

<https://www.bidspotter.co.uk/en-gb/auction-catalogues/food-machinery-2000/catalogue-id-fo10127/lot-0cba26c5-07e2-492f-9ea4-b10a00d1faba>

Lot 88



### S/S UTENSIL SINK.

1 x All s/s utensil sink. Dimensions approx. 1 m x 1 m x 850 mm x 870 mm deep.  
Lift out: TBC

**CLICK LINK BELOW to view current price**

<https://www.bidspotter.co.uk/en-gb/auction-catalogues/food-machinery-2000/catalogue-id-fo10127/lot-bfe15e0e-32a8-4733-bf3d-b10a00d258ef>

Lot 89



### ACCESS PLATFORM STEPS.

1 x Access platform steps. Approx. 730 mm x 900 mm x 650 mm high. Lift out: TBC

**CLICK LINK BELOW to view current price**

<https://www.bidspotter.co.uk/en-gb/auction-catalogues/food-machinery-2000/catalogue-id-fo10127/lot-04bb-6fc4-4222-4014-853c-b10a00d4aaa3>

Lot 90



### ACCESS PLATFORM STEPS.

1 x Access platform steps. Approx. 730 mm x 900 mm x 650 mm. Lift out: TBC

**CLICK LINK BELOW to view current price**

<https://www.bidspotter.co.uk/en-gb/auction-catalogues/food-machinery-2000/catalogue-id-fo10127/lot-4613c2c1-bfac-40a2-8ae6-b10a00d57290>

Lot 91



### COMPLETE CIP SYSTEM.

1 x Complete CIP system with 3-stage tank. With chemical infeed pumps, control panels and heat exchangers. Lift out: TBC

**CLICK LINK BELOW to view current price**

<https://www.bidspotter.co.uk/en-gb/auction-catalogues/food-machinery-2000/catalogue-id-fo10127/lot-2e4d09e5-5571-4820-bc7f-b10a00d61756>

Lot 92



### SYSPAL SINK.

1 x Syspal sink approx. 1 m x 450 mm. Lift out: TBC

**CLICK LINK BELOW to view current price**

<https://www.bidspotter.co.uk/en-gb/auction-catalogues/food-machinery-2000/catalogue-id-fo10127/lot-c5789126-7b33-4ef5-bca4-b10a00d65b9a>

Lot 94



### SUGAR DELIVERY SYSTEM.

1 x Sugar delivery system. On s/s frame with hopper. With DCE Delamatic dust extraction. Frame size is approx. 1.3 m x 1.3 m. The top of the frame is approx. 1.7 m. The hopper size is approx. 2.2 m high. Lift out: TBC

**CLICK LINK BELOW to view current price**

<https://www.bidspotter.co.uk/en-gb/auction-catalogues/food-machinery-2000/catalogue-id-fo10127/lot-104230b8-3b1f-4f5f-8a29-b10a00d701a9>

Lot 95



### LASKA BOWL CUTTER. 500 LITRE.

1 x Laska bowl cutter model KE502X. 500 litre capacity. With s/s bowl, tote bin hoist loader and unloader. With 3-speed knife shaft, 3-speed bowl. Dimensions approx. 3.8 m x 2.5 m x 2 m high. Lift out: TBC

**CLICK LINK BELOW to view current price**

<https://www.bidspotter.co.uk/en-gb/auction-catalogues/food-machinery-2000/catalogue-id-fo10127/lot-7860de87-efb8-4bf2-9f48-b10a00d871aa>

Lot 96



### KNEE OPERATED SINK.

1 x Knee operated sink. Approx. 1.5 m x 400 mm. Lift out: TBC

**CLICK LINK BELOW to view current price**

<https://www.bidspotter.co.uk/en-gb/auction-catalogues/food-machinery-2000/catalogue-id-fo10127/lot-5dce00c2-7a84-49b8-bddd-b10a00d8aff4>



Lot 97



### KOPPENS HOIST.

1 x Koppens bin hoist. Tipping at a height of 1.7 m. Can be tipping at 2.1 m. Overall height 2.8 m x 1 m x 800 mm deep. Lift out: TBC

**CLICK LINK BELOW to view current price**

<https://www.bidspotter.co.uk/en-gb/auction-catalogues/food-machinery-2000/catalogue-id-fo10127/lot-90395e10-937c-47ce-bf1e-b10a00e353e0>

Lot 98



### PODIMORE FV600 VIBRATORY FEEDER.

1 x Podimore FV600 vibratory feeder. Mobile. Approx. 900 mm x 1.3 m. 1.7 m. Lift out: TBC

**CLICK LINK BELOW to view current price**

<https://www.bidspotter.co.uk/en-gb/auction-catalogues/food-machinery-2000/catalogue-id-fo10127/lot-db5d583b-07c9-41b5-8efa-b10a00e51976>

Lot 99



### BUCKET ELEVATOR.

1 x Bucket elevator. All s/s. Approx. 650 mm wide with an Infeed of 1.7 m long. Up to a height of 2.8 m high. Travels along 3.5 m to drop. Lift out: TBC

**CLICK LINK BELOW to view current price**

<https://www.bidspotter.co.uk/en-gb/auction-catalogues/food-machinery-2000/catalogue-id-fo10127/lot-3b105e56-4a36-4a37-b135-b10a00e5b845>

Lot 100



### KOPPENS BIN HOIST.

1 x Koppens bin hoist. Tipping at a height of 1.7 m. Can be tipping at 2.1 m. Overall height 2.8 m x 1 m x 800 mm deep. Lift out: TBC

**CLICK LINK BELOW to view current price**

<https://www.bidspotter.co.uk/en-gb/auction-catalogues/food-machinery-2000/catalogue-id-fo10127/lot-d9094273-aa86-4403-b5e2-b10a00e63994>

Lot 101



### PODIMORE FV600 VIBRATORY FEEDER.

1 x Podimore FV600 vibratory feeder. Mobile. Approx. 900 mm x 1.3 m. 1.7 m. Lift out: TBC

**CLICK LINK BELOW to view current price**

<https://www.bidspotter.co.uk/en-gb/auction-catalogues/food-machinery-2000/catalogue-id-fo10127/lot-00335bdf-aeaa-41a9-98dc-b10a00e67d44>

Lot 102



### UP AND OVER BUCKET ELEVATOR.

1 x Up and over bucket elevator. All s/s. Approx. 650 mm wide with an Infeed of 5.2 m long. Up to a height of 2.8 m high. Travels along 3.5 m to drop. Lift out: TBC

**CLICK LINK BELOW to view current price**

<https://www.bidspotter.co.uk/en-gb/auction-catalogues/food-machinery-2000/catalogue-id-fo10127/lot-81cf053c-4c79-453d-8515-b10a00e75825>

Lot 103



### COMPLETE CHEESECAKE LINE.

1 x Complete cheesecake line. With foil denesting, crumb depositing, 5-stamping, single lane. Overall length approx. 13 m. Total width is approx. 2.2 m. Lift out: TBC

**CLICK LINK BELOW to view current price**

<https://www.bidspotter.co.uk/en-gb/auction-catalogues/food-machinery-2000/catalogue-id-fo10127/lot-16613850-4792-4fcf-b52c-b10a00e81607>

Lot 104



### AFT TWIN DEPOSITING SYSTEM.

1 x AFT twin depositing system. With 2 hoppers. All the spare parts are mounted on the wall and come with this machine. Approx. 1.3 m deep x 2.9 m x 1.6 m high. Lift out: TBC

**CLICK LINK BELOW to view current price**

<https://www.bidspotter.co.uk/en-gb/auction-catalogues/food-machinery-2000/catalogue-id-fo10127/lot-0d1c0675-6ed8-4a72-ac5e-b10a00e88212>

Lot 105



### TANIS FOODTECH HOMOGENISER.

1 x Tanis Foodtech homogeniser aerator with batter mixer. Approx. 900 mm x 1.8 m. 800 mm diameter. Overall height of tank 600 mm. With Maso type inline pump and another pump. Lift out: TBC

**CLICK LINK BELOW to view current price**

<https://www.bidspotter.co.uk/en-gb/auction-catalogues/food-machinery-2000/catalogue-id-fo10127/lot-1f9f6ea2-3dd9-4024-9db5-b10a00e9dfae>

Lot 106



### APV TYPE PUMP.

1 x APV type pump. Lift out: TBC

**CLICK LINK BELOW to view current price**

<https://www.bidspotter.co.uk/en-gb/auction-catalogues/food-machinery-2000/catalogue-id-fo10127/lot-b242a3e1-e1e4-4631-8cc2-b10a00ea0c45>

Lot 107



### APV TYPE PUMP.

1 x APV type pump. Lift out: TBC

**CLICK LINK BELOW to view current price**

<https://www.bidspotter.co.uk/en-gb/auction-catalogues/food-machinery-2000/catalogue-id-fo10127/lot-da872aea-6f9b-4307-bbbc-b10a00ea4b76>

Lot 108



### CONVEYOR.

1 x S/s conveyor. Variable speed. Approx. 1 m long. Belt width approx. 250 mm. Overall width 600 mm wide. Lift out: TBC

**CLICK LINK BELOW to view current price**

<https://www.bidspotter.co.uk/en-gb/auction-catalogues/food-machinery-2000/catalogue-id-fo10127/lot-5b823688-7d95-41ce-82cf-b10a00eaaffb4>

Lot 109



### SPOONER OVEN.

1 x Spooner oven 27m with a belt width of 3.2m and a product height 200mm. racetrack infeed 6 m long infeed conveyor, with 90 degree bend going into the oven. Oven width approx. 5 m wide. With 3-burners. fire suppression system. Natural gas. Burners have recently been updated type Maxon Ovenpack type 425. Lift out: TBC

**CLICK LINK BELOW to view current price**

<https://www.bidspotter.co.uk/en-gb/auction-catalogues/food-machinery-2000/catalogue-id-fo10127/lot-bc430aaa-da07-4a55-b958-b10a00ec4f06>

Lot 110



### SYSPAL KNEE OPERATED SINK.

1 x Syspal all s/s knee operated sink. Approx. 550 mm wide x 430 mm deep. With towel dispenser. Lift out: TBC

**CLICK LINK BELOW to view current price**

<https://www.bidspotter.co.uk/en-gb/auction-catalogues/food-machinery-2000/catalogue-id-fo10127/lot-71a3c5f3-b05a-4114-b658-b10a00ecf9e7>

Lot 111



### SYSPAL 4-STATION SINK WITH TOWEL DISPENSERS.

1 x Syspal all s/s 4-station sink. With 2 x towel dispensers. Dimensions approx. 2 m x 400 mm. Lift out: TBC

**CLICK LINK BELOW to view current price**

<https://www.bidspotter.co.uk/en-gb/auction-catalogues/food-machinery-2000/catalogue-id-fo10127/lot-b18c5160-1961-4dcd-8092-b10a00ed5f76>

Lot 112



### 90 DEGREE BEND CONVEYOR.

1 x 90 degree bend conveyor. Coming out of the spiral. Running straight for 1.1 m then there is a 90 degree bend to the left running on for 12 m. Overall width 500 mm. Belt width 250 mm. Height 900 mm. Lift out: TBC

**CLICK LINK BELOW to view current price**

<https://www.bidspotter.co.uk/en-gb/auction-catalogues/food-machinery-2000/catalogue-id-fo10127/lot-aad13761-d670-4690-9c24-b10a00ee924b>

Lot 113



#### CONVEYOR.

1 x Conveyor with 250 mm belt width. Approx. 3 m long x 500 mm wide x 900 mm high. Lift out: TBC

**CLICK LINK BELOW to view current price**

<https://www.bidspotter.co.uk/en-gb/auction-catalogues/food-machinery-2000/catalogue-id-fo10127/lot-158c7cb0-4a42-4b4f-8518-b10a00ef260d>

Lot 114



#### V-SHAPED CONVEYOR.

1 x V shaped conveyor. Running down 5.7 m, back up 5.2 m. Height 850 mm. Belt width 300 mm. Distance between two ends is approx. 4 m. The return leg has 4 air blast mechanism to push product onto 4-lane depositing line. Lift out: TBC

**CLICK LINK BELOW to view current price**

<https://www.bidspotter.co.uk/en-gb/auction-catalogues/food-machinery-2000/catalogue-id-fo10127/lot-49da-c7a2-9599-48e7-b4a0-b10a00eff1ab>

Lot 115



#### AFT 4-LANE DEPOSITING MACHINE.

1 x AFT 4-lane depositing machine. Belt width approx. 190 mm. Dims approx. 7.6 m long x 1.8 m wide. 1.8 m to the top of the AFT hoppers. 2.85 m to the top of the s/s frame. The valve system deposits mix into the hoppers. First depositing heads are for mouse and the second depositing heads is for liquids. (second set of depositing hoppers are on lot 55) Lift out: TBC

**CLICK LINK BELOW to view current price**

<https://www.bidspotter.co.uk/en-gb/auction-catalogues/food-machinery-2000/catalogue-id-fo10127/lot-fa3a544a-5543-4cde-9ade-b10a00f0c516>

Lot 116



#### ACCESS GANTRY STEPS.

1 x Access steps approx. 3 m x 1.6 m x 1.1 m to top step. Overall height 2.1 m high. Lift out: TBC

**CLICK LINK BELOW to view current price**

<https://www.bidspotter.co.uk/en-gb/auction-catalogues/food-machinery-2000/catalogue-id-fo10127/lot-a2ae3ce7-89c9-432f-bd0f-b10a00f13910>

Lot 117



#### CONVEYOR WITH BLUE INTRALOX BELT.

1 x Conveyor with blue Intralox belt. Approx. 2.2 m wide x 1.5 m x 900 mm. Belt width 1.2 m. Lift out: TBC

**CLICK LINK BELOW to view current price**

<https://www.bidspotter.co.uk/en-gb/auction-catalogues/food-machinery-2000/catalogue-id-fo10127/lot-c7541bbd-b64f-4df9-9020-b10a00f18b39>

Lot 118



#### STARFROST TWIN DRUM COOLER & FREEZER

1 x Starfrost 13-tier twin drum cooler freezer. Model 85-34 (SR)-2 X 13.25. With 850 mm wide belt. Overall width 9 m. 5.8 m wide?. Configuration is in on left and out on right at ground level. Lift out: TBC

**CLICK LINK BELOW to view current price**

<https://www.bidspotter.co.uk/en-gb/auction-catalogues/food-machinery-2000/catalogue-id-fo10127/lot-700e4b21-3f1c-4665-b26b-b10a00f26153>

Lot 119



#### CONVERGING CONVEYOR.

1 x Converging conveyor approx. 1.2 m x 1.7 m x 850 mm. With a belt width of 370 mm. Lift out: TBC

**CLICK LINK BELOW to view current price**

<https://www.bidspotter.co.uk/en-gb/auction-catalogues/food-machinery-2000/catalogue-id-fo10127/lot-90ad38d9-b0cc-45a0-9544-b10a00f37b70>

Lot 120



#### WHM 4-LANE DEPOSITING/DECORATING SYSTEM.

1 x WHM 4-lane depositing system. Depositor 1 2 can do sauce and fruit. depositor 3 does liquid. depositor 4 sprinkles and swirls then the last station is for swirls. Dimensions approx. 12 m long x 2.1 m x 750 mm high. Belt width approx. 180 mm. Includes conveying above for the delivery of fruit from the Rospen system. Lift out: TBC

**CLICK LINK BELOW to view current price**

<https://www.bidspotter.co.uk/en-gb/auction-catalogues/food-machinery-2000/catalogue-id-fo10127/lot-7834decb-60cc-41e1-8382-b10a00f3bfe0>

Lot 121



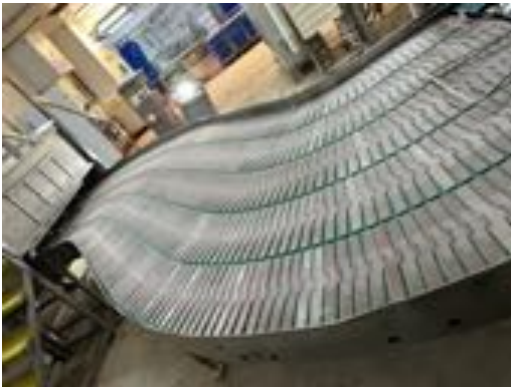
### UP AND OVER STEPS.

1 x Up and over set of steps. Approx. 2.9 m x 1.8 m x 1 m. Lift out: TBC

**CLICK LINK BELOW to view current price**

<https://www.bidspotter.co.uk/en-gb/auction-catalogues/food-machinery-2000/catalogue-id-fo10127/lot-e12c36f2-f749-4c96-bc0c-b10a00f52d94>

Lot 122



### S-SHAPE 4-LANE CONVEYOR.

1 x S-shape 4-lane slatted belt conveyor. 3.9 x 3.4 x 840 mm high. Lift out: TBC

**CLICK LINK BELOW to view current price**

<https://www.bidspotter.co.uk/en-gb/auction-catalogues/food-machinery-2000/catalogue-id-fo10127/lot-afa33f4d-a20f-4c21-87b1-b10a00f58804>

Lot 123



### UP AND OVER STEPS.

1 x Set of up and over steps approx. 2.9 m x 1.8 m x 1 m to the top step. Lift out: TBC

**CLICK LINK BELOW to view current price**

<https://www.bidspotter.co.uk/en-gb/auction-catalogues/food-machinery-2000/catalogue-id-fo10127/lot-b6784446-8003-46ff-8f29-b10a00f5f347>

Lot 124



### STARFROST SPIRAL FREEZER.

1 x Starfrost spiral freezer. Model 85/34/16. 16-tier. Gap between 100 mm. Belt width approx. 800 mm. Approx. 8.8 m wide. Lift out: TBC

**CLICK LINK BELOW to view current price**

<https://www.bidspotter.co.uk/en-gb/auction-catalogues/food-machinery-2000/catalogue-id-fo10127/lot-a538b96b-8d8b-4140-a4a7-b10a00f6f0ec>

Lot 125



### S/S KNEE OPERATED SINK.

1 x All s/s knee operated sink approx. 1.5 m x 420 mm. Lift out: TBC

**CLICK LINK BELOW to view current price**

<https://www.bidspotter.co.uk/en-gb/auction-catalogues/food-machinery-2000/catalogue-id-fo10127/lot-4bfa9781-82bb-439e-94ed-b10a00f79c0d>

Lot 126



### S/S PARTS TROLLEY.

1 x S/s parts trolley (parts excluded). Overall dimensions approx. 1.2 m x 450 mm x 1.4 m high. Lift out: TBC

**CLICK LINK BELOW to view current price**

<https://www.bidspotter.co.uk/en-gb/auction-catalogues/food-machinery-2000/catalogue-id-fo10127/lot-ee2cf228-50c6-437e-8eba-b10a00f812fc>

Lot 127



### SET OF STEPS.

1 x Set of steps. Approx. 500 mm x 2 m. Height to top step 1 m. Lift out: TBC

**CLICK LINK BELOW to view current price**

<https://www.bidspotter.co.uk/en-gb/auction-catalogues/food-machinery-2000/catalogue-id-fo10127/lot-0f18f563-5980-4e8e-9d13-b10a00f87470>

Lot 128



### S/S KNEE OPERATED SINK.

1 x S/s knee operated sink approx. 1 m x 420 mm. Lift out: TBC

**CLICK LINK BELOW to view current price**

<https://www.bidspotter.co.uk/en-gb/auction-catalogues/food-machinery-2000/catalogue-id-fo10127/lot-5bfff0cea-d62f-4879-9ee3-b10a00f8a911>



Lot 129



### S/S KNEE OPERATED SINK.

1 x S/s knee operated sink approx. 540 mm x 400 mm. Lift out: TBC

**CLICK LINK BELOW to view current price**

<https://www.bidspotter.co.uk/en-gb/auction-catalogues/food-machinery-2000/catalogue-id-fo10127/lot-e1fae501-fa3a-4910-b799-b10a00f8d9b3>

Lot 130



### S/S TROLLEY WITH 9-TRAYS.

1 x S/s trolley with 9 trays. Approx. 540 mm wide x 800 mm deep x 1.8 m high. Lift out: TBC

**CLICK LINK BELOW to view current price**

<https://www.bidspotter.co.uk/en-gb/auction-catalogues/food-machinery-2000/catalogue-id-fo10127/lot-da209d3c-816e-43e7-9838-b10a00f916e1>

Lot 131



### 90 DEGREE BEND CONVEYOR.

1 x 90 degree bend conveyor. Running for approx. 6.5 m then with 1.8 m right hand 90 degree bend, belt width 250 mm. Lift out: TBC

**CLICK LINK BELOW to view current price**

<https://www.bidspotter.co.uk/en-gb/auction-catalogues/food-machinery-2000/catalogue-id-fo10127/lot-2b3c804b-6778-4e31-baeb-b10a00f99288>

Lot 131a



### CEILING CONVEYORING.

1 x Ceiling conveying system running around the factory. Lift out: TBC

**CLICK LINK BELOW to view current price**

<https://www.bidspotter.co.uk/en-gb/auction-catalogues/food-machinery-2000/catalogue-id-fo10127/lot-eb464316-c092-422c-821f-b10a00fa6783>

Lot 132



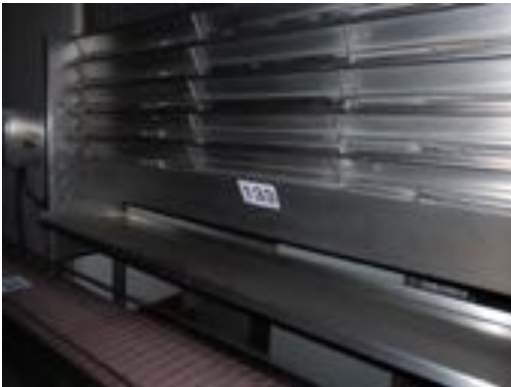
#### CONVEYOR.

1 x Conveyor approx. 3.9 m long x 350 mm wide x belt width approx. 250 mm.  
Lift out: TBC

**CLICK LINK BELOW to view current price**

<https://www.bidspotter.co.uk/en-gb/auction-catalogues/food-machinery-2000/catalogue-id-fo10127/lot-877b3963-000b-417a-b228-b10a00f9e76b>

Lot 133



#### 4-TIER TRAY HOLDING SYSTEM.

1 x 4-tier tray holding system. Approx. 2 m wide x 400 mm x 1.8 m high. Lift out: TBC

**CLICK LINK BELOW to view current price**

<https://www.bidspotter.co.uk/en-gb/auction-catalogues/food-machinery-2000/catalogue-id-fo10127/lot-2315e73d-d0e8-4c9b-b994-b10a00f9f568>

Lot 134



#### GARVENS CHECKWEIGHER.

1 x Garvens checkweigher approx. 1.5 m long x 900 mm x 300 mm belt width.  
Weigh platform length 440 mm. 1.6 m high. With air blast reject into lockable bin. Lift out: TBC

**CLICK LINK BELOW to view current price**

<https://www.bidspotter.co.uk/en-gb/auction-catalogues/food-machinery-2000/catalogue-id-fo10127/lot-1ef9201a-8a19-4f46-8d91-b10a00fa0951>

Lot 135



#### 90 DEGREE BEND CONVEYOR.

1 x 90 degree bend conveyor approx. Lift out: TBC

**CLICK LINK BELOW to view current price**

<https://www.bidspotter.co.uk/en-gb/auction-catalogues/food-machinery-2000/catalogue-id-fo10127/lot-5954b74e-ad51-43c6-a45b-b10a00fc4c72>

Lot 136



## CONVEYOR

1 x Conveyor with Intralox belt. Lift out: TBC

**CLICK LINK BELOW to view current price**

<https://www.bidspotter.co.uk/en-gb/auction-catalogues/food-machinery-2000/catalogue-id-fo10127/lot-8a528ce7-c121-47c3-8dca-b10a00fc6268>

Lot 137



## KLIKLOK CONCORD.

1 x Kliklok Model Concord K100/R fully automatic with glue box. Overall dims approx. 8 m long, 2.6 m wide x 1.75 m high. Lift out: TBC

**CLICK LINK BELOW to view current price**

<https://www.bidspotter.co.uk/en-gb/auction-catalogues/food-machinery-2000/catalogue-id-fo10127/lot-cfe8377c-6083-4dd8-8b80-b10a00fd68f4>

Lot 138



## CONVEYOR.

1 x Conveyor approx. 3.3 m wide x 2.2 m x 850 mm high. 200 mm wide belt. Lift out: TBC

**CLICK LINK BELOW to view current price**

<https://www.bidspotter.co.uk/en-gb/auction-catalogues/food-machinery-2000/catalogue-id-fo10127/lot-2f76fe84-c009-455a-8c48-b10a00fdce38>

Lot 139



## LINX 5990 INKJET PRINTER.

1 x Linx 5990 inkjet printer. On s/s cabinet. Approx. 700 mm x 550 mm x 1 m. Lift out: TBC

**CLICK LINK BELOW to view current price**

<https://www.bidspotter.co.uk/en-gb/auction-catalogues/food-machinery-2000/catalogue-id-fo10127/lot-d4ce9a05-c371-4a45-9a0d-b10a00fe4917>

Lot 140



### CONVEYOR.

1 x Conveyor approx. 2.1 m x 500 mm wide x 250 mm belt width x 920 mm high. Lift out: TBC

**CLICK LINK BELOW to view current price**

<https://www.bidspotter.co.uk/en-gb/auction-catalogues/food-machinery-2000/catalogue-id-fo10127/lot-715277e4-8b63-461f-9941-b10a00febb9d>

Lot 141



### MUNTERS ML1100 DUST EXTRACTOR.

1 x Munters ML1100 dust extractor. Approx. 1.6 m x 600 mm x 1.55 mm high. Lift out: TBC

**CLICK LINK BELOW to view current price**

<https://www.bidspotter.co.uk/en-gb/auction-catalogues/food-machinery-2000/catalogue-id-fo10127/lot-094289b9-5978-4674-8aea-b10a00ff2b6e>

Lot 142



### S/S UTENSIL SINK.

1 x S/s utensil sink. Lift out: TBC

**CLICK LINK BELOW to view current price**

<https://www.bidspotter.co.uk/en-gb/auction-catalogues/food-machinery-2000/catalogue-id-fo10127/lot-3648049f-dd0e-4609-9410-b10a00ff9d08>

Lot 143



### SPOONER OVEN

1 x Spooner oven. belt width 2.7m oven length 15m product height 150mm with 3 burners. burners upgraded. Fire system. Lift out TBC

**CLICK LINK BELOW to view current price**

<https://www.bidspotter.co.uk/en-gb/auction-catalogues/food-machinery-2000/catalogue-id-fo10127/lot-9b93a931-5283-46a9-b8f6-b10a00ffd6a4>

Lot 144



### EUROTEK INLINE BLAST CHILLER/FREEZER

1 x Eurotek inline blast chiller/freezer with defrost. Approx. 3 m wide. Model 17-3-8. Approx. 18 m long (17 m inside cooling tunnel). 4-section.

**CLICK LINK BELOW to view current price**

<https://www.bidspotter.co.uk/en-gb/auction-catalogues/food-machinery-2000/catalogue-id-fo10127/lot-eebbb774-13e8-4327-a8f5-b10a0100fbf3>

Lot 145



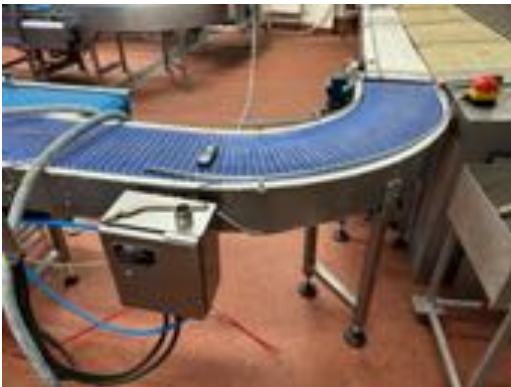
### CONVEYOR.

1 x Conveyor approx. 3 m long x 600 mm x belt width 300 mm. Lift out: TBC

**CLICK LINK BELOW to view current price**

<https://www.bidspotter.co.uk/en-gb/auction-catalogues/food-machinery-2000/catalogue-id-fo10127/lot-f757c475-5b77-4871-93f5-b10a010178a5>

Lot 146



### 90 DEGREE BEND CONVEYOR.

1 x 90 degree bend conveyor. Approx. 1.8 m x 1.3 m x 900 mm. Belt width 300 mm. Lift out: TBC

**CLICK LINK BELOW to view current price**

<https://www.bidspotter.co.uk/en-gb/auction-catalogues/food-machinery-2000/catalogue-id-fo10127/lot-28f5c536-5b40-4a5c-81f0-b10a01022e7>

Lot 147



### U-SHAPE CONVEYOR.

1 x U-shape twin track conveyor dimensions approx. twin track up 4.6 m around to the right 3.6 m and to the right 90 degree 2.6 m. With WMH controls  
Lift out: TBC

**CLICK LINK BELOW to view current price**

<https://www.bidspotter.co.uk/en-gb/auction-catalogues/food-machinery-2000/catalogue-id-fo10127/lot-2f578464-42a2-4b0d-be84-b10a01022ef02>

Lot 148



### TWIN DEPOSITOR

1 x AFT twin depositor which sit over the line. Rise and fall heads. 900 x 1000 x 1700.

**CLICK LINK BELOW to view current price**

<https://www.bidspotter.co.uk/en-gb/auction-catalogues/food-machinery-2000/catalogue-id-fo10127/lot-9bde5625-3ed3-4bc6-ae4b-b10a0107be8f>

Lot 149



### TWIN DEPOSITOR

1 x AFT twin depositor which sit over the line. Rise and fall heads. 900 x 1000 x 1700.

**CLICK LINK BELOW to view current price**

<https://www.bidspotter.co.uk/en-gb/auction-catalogues/food-machinery-2000/catalogue-id-fo10127/lot-903feb56-917b-4126-8a99-b10a0107de4a>

Lot 150



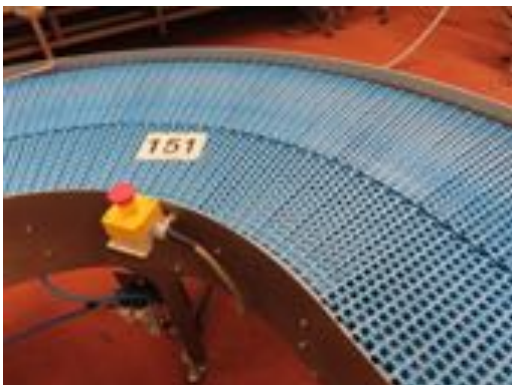
### TWIN SWIRL

1 x Twin swirl sat over the line.

**CLICK LINK BELOW to view current price**

<https://www.bidspotter.co.uk/en-gb/auction-catalogues/food-machinery-2000/catalogue-id-fo10127/lot-905bc-ca1-4e0b-4f17-b962-b10a0107fe7d>

Lot 151



### 90 DEGREE BEND CONVEYOR.

1 x 90 degree bend conveyor with loading facility for the spiral freezer. Belt width 600 mm. Running 1.1 m bearing right for 2.3 m. Overall dims approx. 3 m long. Lift out: TBC

**CLICK LINK BELOW to view current price**

<https://www.bidspotter.co.uk/en-gb/auction-catalogues/food-machinery-2000/catalogue-id-fo10127/lot-9e02c-fa7-3fc3-4b0a-9243-b10a0108653c>

Lot 152



### FRIGOSCANDIA GYRO-FREEZE SPIRAL FREEZER.

1 x Frigoscandia Gyro-freeze Spiral freezer. 20-tier. 600 mm wide belt. Lift out: TBC

**CLICK LINK BELOW to view current price**

<https://www.bidspotter.co.uk/en-gb/auction-catalogues/food-machinery-2000/catalogue-id-fo10127/lot-c95ee79f-234c-473f-b00a-b10a0108a16b>

Lot 153



### COMPLETE ROSPEN DOSING AND WEIGHING SYSTEM.

1 x Complete Rospen dosing and weighing system for toppings. Comprising 2 x vibratory feeders with weighers approx. 1.3 m x 1.2 m x 1.9 m high. Feeding on to bucket elevator z shaped with 3.3 m infeed up 2.9 m and to the left 1.5 m. The buckets are 250 mm x 160 mm x 70 mm deep. Overall width of the bucket elevator is 800 mm wide. Lift out: TBC

**CLICK LINK BELOW to view current price**

<https://www.bidspotter.co.uk/en-gb/auction-catalogues/food-machinery-2000/catalogue-id-fo10127/lot-eb375a6f-336f-44ee-a2ed-b10a0108df84>

Lot 154



### S/S SINK.

1 x Syspal s/s sink. Approx. 550 mm x 400 mm. Lift out: TBC

**CLICK LINK BELOW to view current price**

<https://www.bidspotter.co.uk/en-gb/auction-catalogues/food-machinery-2000/catalogue-id-fo10127/lot-9a91e3d8-ed2e-4dfb-a59c-b10a010930f5>

Lot 155



### S/S SINK.

1 x S/s sink approx. 550 mm x 450 mm. Lift out: TBC

**CLICK LINK BELOW to view current price**

<https://www.bidspotter.co.uk/en-gb/auction-catalogues/food-machinery-2000/catalogue-id-fo10127/lot-d7dacab4-7e1b-4988-8d7a-b10a010bd4ea>

Lot 156



#### PUMP.

1 x Pump. Lift out: TBC.

**CLICK LINK BELOW to view current price**

<https://www.bidspotter.co.uk/en-gb/auction-catalogues/food-machinery-2000/catalogue-id-fo10127/lot-3cab5ac8-db66-40f2-9701-b10d008149c0>

Lot 157



#### SYSPAL S/S 2-PERSONNEL SINK.

1 x Syspal s/s 2-personnel fully automatic sink. Approx. 1 m x 400 mm. Lift out: TBC

**CLICK LINK BELOW to view current price**

<https://www.bidspotter.co.uk/en-gb/auction-catalogues/food-machinery-2000/catalogue-id-fo10127/lot-ac40687b-944b-4d70-b367-b10d0081ec23>

Lot 158



#### 90 DEGREE BEND CONVEYOR.

1 x 90 degree bend slatted belt conveyor. 300 mm wide. Approx. 1.2 m running to the right 900 mm. Lift out: TBC

**CLICK LINK BELOW to view current price**

<https://www.bidspotter.co.uk/en-gb/auction-catalogues/food-machinery-2000/catalogue-id-fo10127/lot-ae65cc4-7b9f-4fbf-868f-b10d0082b852>

Lot 159



#### LOMA CHECKWEIGHER.

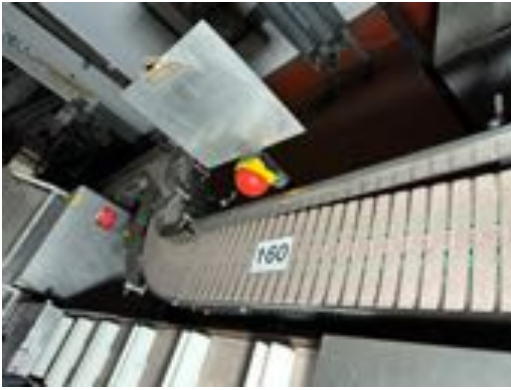
1 x Loma 6000 checkweigher approx. 1.5 m long x 300 mm. Belt width 250 mm. Overall width 800 mm. Lift out: TBC

**CLICK LINK BELOW to view current price**

<https://www.bidspotter.co.uk/en-gb/auction-catalogues/food-machinery-2000/catalogue-id-fo10127/lot-bced-ca9f-fcd1-4304-9ee2-b10d00833db5>



Lot 160



### S-BEND TYPE CONVEYOR.

1 x Conveyor S-bend type. Approx. Running approx. 5.5 m long. 270 mm wide belt. Lift out: TBC

**CLICK LINK BELOW to view current price**

<https://www.bidspotter.co.uk/en-gb/auction-catalogues/food-machinery-2000/catalogue-id-fo10127/lot-763934b6-c0ed-47d8-9911-b10d0083d093>

Lot 161



### BRADMAN LAKE SL300 BOXING MACHINE.

1 x Bradman Lake SL300 fully automatic boxing machine. With gluer. Approx. 8 m long x 2 m wide x 2 m high. Lift out: TBC

**CLICK LINK BELOW to view current price**

<https://www.bidspotter.co.uk/en-gb/auction-catalogues/food-machinery-2000/catalogue-id-fo10127/lot-1c7dab-0be8-47d5-83e8-b10d00869418>

Lot 162



### MOBILE CONVEYORING SYSTEM.

1 x Mobile conveying system. Approx 1.4 m x 500 mm x 900 mm high. Overall height Approx. 1.7 m. Belt width 250 mm. Lift out: TBC

**CLICK LINK BELOW to view current price**

<https://www.bidspotter.co.uk/en-gb/auction-catalogues/food-machinery-2000/catalogue-id-fo10127/lot-775a6377-196e-47e9-b3cd-b10d0087349e>

Lot 163



### COMPLETE TANIS MOUSSE AERATION SYSTEM.

1 x Complete Tanis Mousse aeration system. With 2 x pre mix vessels approx. 650 mm x 150 mm high, internally approx. 600 mm x 800 mm. With various pumps, flow meters, control panel etc. Lift out: TBC

**CLICK LINK BELOW to view current price**

<https://www.bidspotter.co.uk/en-gb/auction-catalogues/food-machinery-2000/catalogue-id-fo10127/lot-6a70b920-d14d-44fd-922c-b10d008aa0c1>

Lot 164



### MONOMIX AERATION MACHINE.

1 x Mondomix aeration machine. Model E50. With 2 x s/s vessels/holding tanks. Dimensions approx. 650 mm x 1.5 m, internally 650 mm x 800 mm. With all pumps. Lift out: TBC

**CLICK LINK BELOW to view current price**

<https://www.bidspotter.co.uk/en-gb/auction-catalogues/food-machinery-2000/catalogue-id-fo10127/lot-28ceb245-7755-424a-bab4-b10d008b5dbb>

Lot 165



### HOLDING VESSEL.

1 x Holding vessel. With pump and valve system. Approx. 1.3 m diameter x 2.9 m high. Lift out: TBC

**CLICK LINK BELOW to view current price**

<https://www.bidspotter.co.uk/en-gb/auction-catalogues/food-machinery-2000/catalogue-id-fo10127/lot-582ef141-c01d-4a0d-bc01-b10d008be0d4>

Lot 166



### COMPLETE ROSPEN WEIGHING/DEPOSITING SYSTEM.

1 x Complete Rospen weighing depositing system. With 4 x vibratory feeders on weigh cells for dosing the correct amount of product into the buckets. Each vibratory feeder is approx. 1.3 m x 1.2 m x 1.9 m high. There are also 2 x The bucket elevator is approx. 3 m high x 3 m long infeed, 1.5 m outfeed. Each bucket is approx. 250 mm x 160 mm x 70 mm deep. With touch screen controls. Previously used for depositing various toppings. Lift out: TBC

**CLICK LINK BELOW to view current price**

<https://www.bidspotter.co.uk/en-gb/auction-catalogues/food-machinery-2000/catalogue-id-fo10127/lot-e98b2047-5199-464f-b6eb-b10d008dbbfa>

Lot 167



### DC NORRIS SIDE WALL MIXING COOKING VESSEL. 500 LITRE

1 x DC Norris side wall mixing cooking vessel. Approx. 500 litre capacity. On weigh cells with full process controls and CIP facility. Dims approx. 1000 mm diameter x 1800 mm high. Overall height 2.4 m. Bowl dimensions approx. 930 mm x 1 m deep. Lift out: TBC

**CLICK LINK BELOW to view current price**

<https://www.bidspotter.co.uk/en-gb/auction-catalogues/food-machinery-2000/catalogue-id-fo10127/lot-ec899af3-6581-4d41-b442-b10d008f41e1>

Lot 168



#### DC NORRIS COOKING VESSEL. 500 LITRE.

1 x DC Norris cooking vessel. 500 litre. On weigh cells. With high shear mixer. Dims approx. 1 m diameter x 1.8 m high. Overall height 2.4 m. Bowl dims approx. 930 mm x 1 m deep. Lift out: TBC

**CLICK LINK BELOW to view current price**

<https://www.bidspotter.co.uk/en-gb/auction-catalogues/food-machinery-2000/catalogue-id-fo10127/lot-6ef-15c7d-d37c-49f6-a51b-b10d00911c32>

Lot 169



#### CHERRY BURRELL VOTATOR INLINE COOLING PIPES.

1 x Cherry Burrell inline cooling pipes. Lift out: TBC

**CLICK LINK BELOW to view current price**

<https://www.bidspotter.co.uk/en-gb/auction-catalogues/food-machinery-2000/catalogue-id-fo10127/lot-e3259f36-0ffa-48a6-8341-b10d009436ee>

Lot 170



#### DC NORRIS COOKING VESSEL. 500 LITRE CAPACITY.

1 x DC Norris cooking vessel. 500 litre capacity. Approx. 1.1 m overall x 1.4 m high. With side wall and high shear mixer. on weigh cells. Lift out: TBC

**CLICK LINK BELOW to view current price**

<https://www.bidspotter.co.uk/en-gb/auction-catalogues/food-machinery-2000/catalogue-id-fo10127/lot-92f3544f-2419-42e8-9cca-b10d00933816>

Lot 171



#### DC NORRIS COOKING VESSEL. 500 LITRE CAPACITY>

1 x DC Norris cooking vessel. 500 litre capacity. With side wall scrape, steam injection. On weigh cells. Dims approx. 1.1 m overall x 1.4 m.

**CLICK LINK BELOW to view current price**

<https://www.bidspotter.co.uk/en-gb/auction-catalogues/food-machinery-2000/catalogue-id-fo10127/lot-570520a8-0849-49b4-9b16-b10d0094d970>

Lot 172



### PLATFORM GANTRY.

1 x Platform gantry approx. 4.4 m x 3.7 m. Lift out: TBC

**CLICK LINK BELOW to view current price**

<https://www.bidspotter.co.uk/en-gb/auction-catalogues/food-machinery-2000/catalogue-id-fo10127/lot-51f840ff-13de-4f58-9cfb-b10d009505b7>

Lot 173



### INLINE PUMP.

1 x Inline pump. Lift out: TBC

**CLICK LINK BELOW to view current price**

<https://www.bidspotter.co.uk/en-gb/auction-catalogues/food-machinery-2000/catalogue-id-fo10127/lot-ffe16386-cac0-4d91-b62d-b10d00952600>

Lot 174



### MASO PUMP.

1 x Maso pump. Lift out: TBC

**CLICK LINK BELOW to view current price**

<https://www.bidspotter.co.uk/en-gb/auction-catalogues/food-machinery-2000/catalogue-id-fo10127/lot-cca-73d7d-c220-4fd8-a087-b10d00954e2c>

Lot 175



### MASO PUMP.

1 x Maso pump. Lift out: TBC

**CLICK LINK BELOW to view current price**

<https://www.bidspotter.co.uk/en-gb/auction-catalogues/food-machinery-2000/catalogue-id-fo10127/lot-3437b2d5-cbfa-431d-8d00-b10d00957a91>

Lot 176



### S/S DOUBLE SINK.

1 x S/s double sink. Approx. 1.8 m x 630 mm. Lift out: TBC

**CLICK LINK BELOW to view current price**

<https://www.bidspotter.co.uk/en-gb/auction-catalogues/food-machinery-2000/catalogue-id-fo10127/lot-84b94084-37ab-459e-b6d3-b10d0095d5e9>

Lot 177



### S/S TABLE.

1 x S/s table approx. 1.8 m x 600 mm x 900 mm high. Lift out: TBC

**CLICK LINK BELOW to view current price**

<https://www.bidspotter.co.uk/en-gb/auction-catalogues/food-machinery-2000/catalogue-id-fo10127/lot-f8769902-adfe-4cd1-9c91-b10d00960f8e>

Lot 178



### MOBILE HOPPER.

1 x Mobile hopper bottom centre discharge. Overall dimensions approx. 750 mm x 550 mm. Hopper dims approx. 680 mm x 460 mm x 400 mm. Lift out: TBC

**CLICK LINK BELOW to view current price**

<https://www.bidspotter.co.uk/en-gb/auction-catalogues/food-machinery-2000/catalogue-id-fo10127/lot-4bc5bb1b-88c6-45ec-b48e-b10d009682e2>

Lot 179



### MOBILE HOPPER.

1 x Mobile hopper bottom centre discharge. Overall dimensions approx. 750 mm x 550 mm. Hopper dims approx. 680 mm x 460 mm x 400 mm. Lift out: TBC

**CLICK LINK BELOW to view current price**

<https://www.bidspotter.co.uk/en-gb/auction-catalogues/food-machinery-2000/catalogue-id-fo10127/lot-0680edbd-7ea1-4b06-87ec-b10d0096a443>

Lot 180



#### PRODUCT HOLDING TABLE.

1 x Product holding table approx. 2.1 m x 570 mm x 950 mm. Lift out: TBC

**CLICK LINK BELOW to view current price**

<https://www.bidspotter.co.uk/en-gb/auction-catalogues/food-machinery-2000/catalogue-id-fo10127/lot-431e7b54-ae3d-423e-8d91-b10d0096db4a>

Lot 181



#### S/S TABLE.

1 x S/s table approx. 800 mm x 450 mm. Lift out: TBC

**CLICK LINK BELOW to view current price**

<https://www.bidspotter.co.uk/en-gb/auction-catalogues/food-machinery-2000/catalogue-id-fo10127/lot-8df-3cbf0-5079-4384-a381-b10d009712f6>

Lot 182



#### LOGIUDICE MIXER WITH TIPPING.

1 x Logiudice mixer with hydraulic lift for tipping. Overall dims approx. 2 m x 1.2 m x 2.8 m high. Bowl approx. 1.1 m x 500 mm deep. All s/s bowl. With side tipping and wall mounted panel. Lift out: TBC

**CLICK LINK BELOW to view current price**

<https://www.bidspotter.co.uk/en-gb/auction-catalogues/food-machinery-2000/catalogue-id-fo10127/lot-a41bc422-2f3b-4888-8223-b10d0097e618>

Lot 183



#### MOBILE ACCESS STEPS.

1 x Mobile access steps approx. 800 mm x 1.7 m x 2 m high. Height to top step is 1 m. Lift out: TBC

**CLICK LINK BELOW to view current price**

<https://www.bidspotter.co.uk/en-gb/auction-catalogues/food-machinery-2000/catalogue-id-fo10127/lot-bf90978c-00f7-4b90-bb14-b10d00984d7d>

Lot 184



### WIMS ENG MOBILE BATTER MIXER.

1 x Wims Engineering mobile batter mixer approx. 1.2 m x 600 mm x 1.6 m high. With pump and hopper. Hopper dims approx. 600 mm diameter x 550 mm. Lift out: TBC

**CLICK LINK BELOW to view current price**

<https://www.bidspotter.co.uk/en-gb/auction-catalogues/food-machinery-2000/catalogue-id-fo10127/lot-2d55e7f3-8cee-403c-bbda-b10d009915b7>

Lot 185



### 2 X S/S MOBILE FOGGERS.

2 x S/s mobile foggers. Lift out: TBC

**CLICK LINK BELOW to view current price**

<https://www.bidspotter.co.uk/en-gb/auction-catalogues/food-machinery-2000/catalogue-id-fo10127/lot-f5b1e4db-2a7f-4719-bfc7-b10d009b91a6>

Lot 186



### COMPLETE S/S BATTER MIXING SYSTEM.

1 x Complete batter mixing system with gantry. All s/s. With batch control, fully programmable, fully automatic. Consists 2-lines with Maso pump on each, each line can run independently or at the same time, each line facilitates weighing ingredients going in which are then pumped into batter tank. Internal tank dimensions approx. 770 mm diameter x 900 mm deep internally, each tank has a hoist approx. 2.3 m high x 1.1 m wide with a tipping height of 1.7 m. Overall dimensions including hoist is 5.5 m wide x 3.1 m. Working height of platform is 770 mm. Lift out: TBC

**CLICK LINK BELOW to view current price**

<https://www.bidspotter.co.uk/en-gb/auction-catalogues/food-machinery-2000/catalogue-id-fo10127/lot-15d6770c-0a2d-4ba4-8ef4-b10d009e6fec>

Lot 187



### ALL S/S HOLDING TANK.

1 x All s/s holding tank with Maso SPS-2 pump. approx. 800 mm diameter x 1.5 m. Internal dimensions approx. 750 mm x 1 m deep. Lift out: TBC

**CLICK LINK BELOW to view current price**

<https://www.bidspotter.co.uk/en-gb/auction-catalogues/food-machinery-2000/catalogue-id-fo10127/lot-eafb0637-1771-4547-bdbf-b10d009f64b1>

Lot 188



### ALL S/S HOLDING TANK.

1 x All s/s holding tank with Maso SPS-2 pump. approx. 800 mm diameter x 1.5 m. Internal dimensions approx. 750 mm x 1 m deep. Lift out: TBC

**CLICK LINK BELOW to view current price**

<https://www.bidspotter.co.uk/en-gb/auction-catalogues/food-machinery-2000/catalogue-id-fo10127/lot-0727c7e3-89d9-4db0-86e4-b10d009f9265>

Lot 189



### S/S SINGLE PERSONNEL KNEE OPERATED SINK.

1 x S/s single personnel knee operated sink approx. 540 mm x 420 mm. Lift out: TBC

**CLICK LINK BELOW to view current price**

<https://www.bidspotter.co.uk/en-gb/auction-catalogues/food-machinery-2000/catalogue-id-fo10127/lot-75bd1df9-0937-4ea0-b163-b10d009fe670>

Lot 190



### ECOLAB PRESSURE WASHER SYSTEM WITH HOSE REEL HOLD-

1 x Ecolab pressure washer system. With half moon hose reel holder. Lift out: TBC

**CLICK LINK BELOW to view current price**

<https://www.bidspotter.co.uk/en-gb/auction-catalogues/food-machinery-2000/catalogue-id-fo10127/lot-48c118f6-77d0-41a0-9c84-b10d00a04821>

Lot 191



### 2 X S/S HOSE REELS INCLUDING HOSES.

2 x S/s hose reels including hoses. Lift out: TBC

**CLICK LINK BELOW to view current price**

<https://www.bidspotter.co.uk/en-gb/auction-catalogues/food-machinery-2000/catalogue-id-fo10127/lot-32c6453f-ec34-4534-997e-b10d00a0fc6f>



Lot 192



### HOLCHEM CHEMICAL CLEANING SYSTEM.

1 x Holchem chemical cleaning system. Lift out: TBC

**CLICK LINK BELOW to view current price**

<https://www.bidspotter.co.uk/en-gb/auction-catalogues/food-machinery-2000/catalogue-id-fo10127/lot-dae-c3faa-89a3-4a66-a9ea-b10d00a12dbd>

Lot 193



### AVERY WEIGH-TRONIX PLATFORM SCALE.

1 x Avery Weigh-Tronix platform scale approx. 1500 kg max, 10 kg min capacity. Lift out: TBC

**CLICK LINK BELOW to view current price**

<https://www.bidspotter.co.uk/en-gb/auction-catalogues/food-machinery-2000/catalogue-id-fo10127/lot-eb4f-5cd7-7e3d-4ab6-bb05-b10d00a1bc81>

Lot 194



### WALL MOUNTED NITA HOSE REEL.

1 x Wall mounted Nita hose reel. Approx. 500 mm diameter. Lift out: TBC

**CLICK LINK BELOW to view current price**

<https://www.bidspotter.co.uk/en-gb/auction-catalogues/food-machinery-2000/catalogue-id-fo10127/lot-8aaa870d-1111-4a59-8214-b10d00a2088b>

Lot 195



### SYSPAL S/S KNEE OPERATED SINK WITH PAPER TOWEL DIS-

1 x Syspal s/s knee operated personnel sink with paper towel dispenser. Approx. 560 mm x 420 mm. Lift out: TBC

**CLICK LINK BELOW to view current price**

<https://www.bidspotter.co.uk/en-gb/auction-catalogues/food-machinery-2000/catalogue-id-fo10127/lot-0a3a7245-69d5-4e94-9356-b10d00a29cff>

Lot 196



**4 X WHITE MOBILE PLASTIC BINS.**

4 x White mobile plastic bins. Internal dimensions approx. 380 mm x 740 mm x 600 mm. Lift out: TBC

**CLICK LINK BELOW to view current price**

<https://www.bidspotter.co.uk/en-gb/auction-catalogues/food-machinery-2000/catalogue-id-fo10127/lot-8c91c71d-6593-443e-94e7-b10d00a35c4c>

Lot 197



**4 X WHIE MOBILE PLASTIC BINS.**

4 x White mobile plastic bins. Internal dimensions approx. 380 mm x 740 mm x 600 mm. Lift out: TBC

**CLICK LINK BELOW to view current price**

<https://www.bidspotter.co.uk/en-gb/auction-catalogues/food-machinery-2000/catalogue-id-fo10127/lot-27a8f2a7-3ce0-4b8a-85a5-b10d00a37e6e>

Lot 198



**4 X WHITE MOBILE PLASTIC BINS.**

4 x White mobile plastic bins. Internal dimensions approx. 380 mm x 740 mm x 600 mm. Lift out: TBC

**CLICK LINK BELOW to view current price**

<https://www.bidspotter.co.uk/en-gb/auction-catalogues/food-machinery-2000/catalogue-id-fo10127/lot-703b7d7-3c60-4c22-b59f-b10d00a3ab6f>

Lot 199



**2 X WHITE MOBILE PLASTIC BINS.**

2 x White mobile plastic bins. Internal dimensions approx. 380 mm x 740 mm x 600 mm. Lift out: TBC

**CLICK LINK BELOW to view current price**

<https://www.bidspotter.co.uk/en-gb/auction-catalogues/food-machinery-2000/catalogue-id-fo10127/lot-64ae6a53-d9a2-466e-a76f-b10d00a3c978>

Lot 200



### 3 X RED MOBILE PLASTIC BINS.

3 x Red mobile plastic bins, internal dimensions approx. 400 mm x 400 mm x 650 mm high. Lift out: TBC

**CLICK LINK BELOW to view current price**

<https://www.bidspotter.co.uk/en-gb/auction-catalogues/food-machinery-2000/catalogue-id-fo10127/lot-7bce7e5f-6a84-4c55-a2f4-b10d00a42a96>

Lot 201



### 3 X RED MOBILE PLASTIC BINS.

3 x Red mobile plastic bins, internal dimensions approx. 400 mm x 400 mm x 650 mm high. Lift out: TBC

**CLICK LINK BELOW to view current price**

<https://www.bidspotter.co.uk/en-gb/auction-catalogues/food-machinery-2000/catalogue-id-fo10127/lot-23f9dc7c-2cbf-4b08-ae72-b10d00a44ae3>

Lot 202



### 4 X WHITE PLASTIC BINS WITH LIDS ON SYSPAL DOLLIES.

4 x White plastic bins with lids on Sypsal dollies. Internal dimensions approx. 500 mm x 400 mm x 600 mm. Lift out: TBC

**CLICK LINK BELOW to view current price**

<https://www.bidspotter.co.uk/en-gb/auction-catalogues/food-machinery-2000/catalogue-id-fo10127/lot-8f90b10f-7ee9-4953-b67e-b10d00a54e410>

Lot 203



### 4 X WHITE PLASTIC BINS WITH LIDS ON SYSPAL DOLLIES.

4 x White plastic bins with lids on Sypsal dollies. Internal dimensions approx. 500 mm x 400 mm x 600 mm. Lift out: TBC

**CLICK LINK BELOW to view current price**

<https://www.bidspotter.co.uk/en-gb/auction-catalogues/food-machinery-2000/catalogue-id-fo10127/lot-400cc075-c26a-4d27-87c5-b10d00a530a7>

Lot 204



**4 X WHITE PLASTIC BINS WITH LIDS ON SYSPAL DOLLIES.**

4 x White plastic bins with lids on Sypsal dollies. Internal dimensions approx. 500 mm x 400 mm x 600 mm. Lift out: TBC

**CLICK LINK BELOW to view current price**

<https://www.bidspotter.co.uk/en-gb/auction-catalogues/food-machinery-2000/catalogue-id-fo10127/lot-ab-da3a35-392e-477d-b683-b10d00a553b6>

Lot 205



**4 X WHITE PLASTIC BINS WITH LIDS ON SYSPAL DOLLIES.**

4 x White plastic bins with lids on Sypsal dollies. Internal dimensions approx. 500 mm x 400 mm x 600 mm. Lift out: TBC

**CLICK LINK BELOW to view current price**

<https://www.bidspotter.co.uk/en-gb/auction-catalogues/food-machinery-2000/catalogue-id-fo10127/lot-699b1583-7870-4f14-8099-b10d00a5802a>

Lot 206



**5 X WHITE MOBILE PLASTIC BINS.**

5 x White mobile plastic bins with lids. Internal dimensions approx. 500 mm x 400 mm x 600 mm. Lift out: TBC

**CLICK LINK BELOW to view current price**

<https://www.bidspotter.co.uk/en-gb/auction-catalogues/food-machinery-2000/catalogue-id-fo10127/lot-0fbb7537-6473-4a68-a627-b10d00a5d881>

Lot 207



**5 X WHITE MOBILE PLASTIC BINS WITH LIDS.**

5 x White mobile plastic bins with lids. Internal dimensions approx. 500 mm x 400 mm x 600 mm. Lift out: TBC

**CLICK LINK BELOW to view current price**

<https://www.bidspotter.co.uk/en-gb/auction-catalogues/food-machinery-2000/catalogue-id-fo10127/lot-1dcd4428-6139-4406-8186-b10d00a61b9c>

Lot 208



### 5 X WHITE MOBILE PLASTIC BINS WITH LIDS.

5 x White mobile plastic bins with lids. Internal dimensions approx. 500 mm x 400 mm x 600 mm. Lift out: TBC

**CLICK LINK BELOW to view current price**

<https://www.bidspotter.co.uk/en-gb/auction-catalogues/food-machinery-2000/catalogue-id-fo10127/lot-ad217a90-bf2c-483f-a13a-b10d00a64205>

Lot 209



### 2 X S/S 200 LITRE TOTE BINS WITH LIDS.

2 x S/s tote bins, 200 litre with lids. Approx. 700 mm x 800 mm. Lift out: TBC

**CLICK LINK BELOW to view current price**

<https://www.bidspotter.co.uk/en-gb/auction-catalogues/food-machinery-2000/catalogue-id-fo10127/lot-707244eb-5f76-4cdc-bcfa-b10e009f7110>

Lot 210



### MOBILE S/S RACK.

1 x Mobile s/s rack approx. 600 mm x 700 mm x 1.6 m high. Lift out: TBC

**CLICK LINK BELOW to view current price**

<https://www.bidspotter.co.uk/en-gb/auction-catalogues/food-machinery-2000/catalogue-id-fo10127/lot-e6ca271c-95e2-4be4-9d03-b10e009fbdef>

Lot 211



### RED PLASTIC BINS

5 x Red plastic bins. Lift out TBC

**CLICK LINK BELOW to view current price**

<https://www.bidspotter.co.uk/en-gb/auction-catalogues/food-machinery-2000/catalogue-id-fo10127/lot-bb-fe0830-1b8d-4285-8dd6-b10e00a01118>

Lot 212



### S/S SINK WITH DRAINER AND SIDE TABLE.

1 x S/s sink with side table approx. 800 mm x 900 mm. Sink dims approx. 750 mm x 600 mm x 300 mm deep. The side drainer is approx. 1.1 m x 900 mm. Lift out: TBC

**CLICK LINK BELOW to view current price**

<https://www.bidspotter.co.uk/en-gb/auction-catalogues/food-machinery-2000/catalogue-id-fo10127/lot-25fc8d2d-6e19-42b8-8d2e-b10e00a06c74>

Lot 213



### S/S DRAINING TABLE.

1 x S/s draining table approx. 900 mm x 1.2 m long. Lift out: TBC

**CLICK LINK BELOW to view current price**

<https://www.bidspotter.co.uk/en-gb/auction-catalogues/food-machinery-2000/catalogue-id-fo10127/lot-994dea4a-34d1-448c-8991-b10e00a0e905>

Lot 214



### SYSPAL SINGLE PERSONNEL KNEE OPERATED SINK.

1 x Syspal single personnel knee operated sink. Approx. 600 mm x 400 mm. Lift out: TBC

**CLICK LINK BELOW to view current price**

<https://www.bidspotter.co.uk/en-gb/auction-catalogues/food-machinery-2000/catalogue-id-fo10127/lot-4463d783-a08d-4927-a0c9-b10e00a19362>

Lot 215



### SHELVING UNIT WITH QTY PLASTIC TRAYS.

1 x Shelving unit with 7-shelves includes quantity of plastic trays. Dimensions approx. 1.5 m x 600 mm x 2 m high. Lift out: TBC

**CLICK LINK BELOW to view current price**

<https://www.bidspotter.co.uk/en-gb/auction-catalogues/food-machinery-2000/catalogue-id-fo10127/lot-79377103-bc72-4a0b-8977-b10e00a2595f>

Lot 216



### S/S MOBILE 4-SHELF TROLLEY.

1 x S/s mobile trolley with 4 shelves. Approx. 800 mm wide x 1.2 m. Lift out: TBC

**CLICK LINK BELOW to view current price**

<https://www.bidspotter.co.uk/en-gb/auction-catalogues/food-machinery-2000/catalogue-id-fo10127/lot-71b2f8bd-3695-4b4c-b4a3-b10e00a2cd48>

Lot 217



### S/S MOBILE TROLLEY WITH 4 SHELVES.

1 x S/s mobile trolley with 4 shelves. Approx. 800 mm wide x 1.2 m. Lift out: TBC

**CLICK LINK BELOW to view current price**

<https://www.bidspotter.co.uk/en-gb/auction-catalogues/food-machinery-2000/catalogue-id-fo10127/lot-7d4b7f40-b609-49ad-82ee-b10e00a2f06c>

Lot 218



### S/S MOBILE TROLLEY.

1 x S/s mobile trolley. Approx. 600 mm x 800 mm. Lift out: TBC

**CLICK LINK BELOW to view current price**

<https://www.bidspotter.co.uk/en-gb/auction-catalogues/food-machinery-2000/catalogue-id-fo10127/lot-0d33b9b4-305d-4197-881b-b10e00a32a17>

Lot 219



### S/S TABLE.

1 x S/s table approx. 1.4 m x 800 mm. Lift out: TBC

**CLICK LINK BELOW to view current price**

<https://www.bidspotter.co.uk/en-gb/auction-catalogues/food-machinery-2000/catalogue-id-fo10127/lot-c4dc5020-b857-4a9a-a0ea-b10e00a35f40>

Lot 220



#### S/S TABLE.

1 x S/s table approx. 1.4 m x 800 mm. Lift out: TBC

**CLICK LINK BELOW to view current price**

<https://www.bidspotter.co.uk/en-gb/auction-catalogues/food-machinery-2000/catalogue-id-fo10127/lot-ac4939c1-5c4e-4cb8-8a0e-b10e00a37e02>

Lot 221



#### S/S BULK SUGAR DELIVERY SYSTEM.

1 x S/s bulk sugar delivery filling system. On s/s frame. With DCE Delamatic dust extractor. Approx. 2.4 m x 2.4 m x 2.6 m high. Lift out: TBC

**CLICK LINK BELOW to view current price**

<https://www.bidspotter.co.uk/en-gb/auction-catalogues/food-machinery-2000/catalogue-id-fo10127/lot-0f818790-a18d-47f7-b52f-b10e00a417bc>

Lot 222



#### 5 X ALUMINIUM HOLDING TROLLEYS.

5 x Aluminium holding trolleys. Overall dims approx. 1.2 m x 1 m x 1.105 high. Internal dimensions approx. 940 mm deep x 1.104 m wide. Lift out: TBC

**CLICK LINK BELOW to view current price**

<https://www.bidspotter.co.uk/en-gb/auction-catalogues/food-machinery-2000/catalogue-id-fo10127/lot-2874ea03-4a07-483c-b442-b10e00a60808>

Lot 223



#### 5 X ALUMINIUM HOLDING TROLLEYS.

5 x Aluminium holding trolleys. Overall dims approx. 1.2 m x 1 m x 1.105 high. Internal dimensions approx. 940 mm deep x 1.104 m wide. Lift out: TBC

**CLICK LINK BELOW to view current price**

<https://www.bidspotter.co.uk/en-gb/auction-catalogues/food-machinery-2000/catalogue-id-fo10127/lot-11505b55-890b-4196-b94e-b10e00a63382>



Lot 224



### 5 X ALUMINIUM HOLDING TROLLEYS.

5 x Aluminium holding trolleys. Overall dims approx. 1.2 m x 1 m x 1.105 high. Internal dimensions approx. 940 mm deep x 1.104 m wide. Lift out: TBC

**CLICK LINK BELOW to view current price**

<https://www.bidspotter.co.uk/en-gb/auction-catalogues/food-machinery-2000/catalogue-id-fo10127/lot-c95d71a2-e8fc-4220-9191-b10e00a652e8>

Lot 225



### ALUMINIUM HOLDING TROLLEY.

1 x Aluminium holding trolley. Overall dims approx. 1.2 m x 1 m x 1.105 high. Internal dimensions approx. 940 mm deep x 1.104 m wide. Lift out: TBC

**CLICK LINK BELOW to view current price**

<https://www.bidspotter.co.uk/en-gb/auction-catalogues/food-machinery-2000/catalogue-id-fo10127/lot-8850be27-85cf-474e-8142-b10e00ad3180>

Lot 226



### 3 X S/S TOTE BINS.

3 x S/s tote bins approx. 1.2 m wide x 1 m deep x 860 mm high. Internal dimensions approx. 1.105 x 960 mm. Lift out: TBC

**CLICK LINK BELOW to view current price**

<https://www.bidspotter.co.uk/en-gb/auction-catalogues/food-machinery-2000/catalogue-id-fo10127/lot-d2746800-c7ae-411e-9fd9-b10e00a6e107>

Lot 227



### 2 X S/S TOTE BINS.

2 x S/s 200 litre tote bins. Lift out: TBC

**CLICK LINK BELOW to view current price**

<https://www.bidspotter.co.uk/en-gb/auction-catalogues/food-machinery-2000/catalogue-id-fo10127/lot-eb960e3b-99c3-49d4-bed4-b10e00a7a211>

Lot 228



### S/S MOBILE HOLDING HOPPER.

1 x S/s mobile holding hopper with bottom centre discharge. Internal dims approx. 680 mm x 460 mm. Overall dims approx. 860 mm x 650 mm x 450 mm high. Lift out: TBC

**CLICK LINK BELOW to view current price**

<https://www.bidspotter.co.uk/en-gb/auction-catalogues/food-machinery-2000/catalogue-id-fo10127/lot-d95b16c6-a05a-476d-ba7e-b10e00a82c66>

Lot 229



### S/S MOBILE HOLDING HOPPER.

1 x S/s mobile holding hopper with bottom centre discharge. Internal dims approx. 680 mm x 460 mm. Overall dims approx. 860 mm x 650 mm x 450 mm high. Lift out: TBC

**CLICK LINK BELOW to view current price**

<https://www.bidspotter.co.uk/en-gb/auction-catalogues/food-machinery-2000/catalogue-id-fo10127/lot-74ed9871-72fa-42a1-997c-b10e00a84ce2>

Lot 230



### 10 X S/S TOTE BIN LIDS.

10 x S/s tote bin lids. Lift out: TBC

**CLICK LINK BELOW to view current price**

<https://www.bidspotter.co.uk/en-gb/auction-catalogues/food-machinery-2000/catalogue-id-fo10127/lot-2ad08b0d-1b23-4d7c-b805-b10e00a8a360>

Lot 231



### FLOW SYSTEM.

1 x Flow system. On s/s frame. With Alfa Laval pump. Lift out: TBC

**CLICK LINK BELOW to view current price**

<https://www.bidspotter.co.uk/en-gb/auction-catalogues/food-machinery-2000/catalogue-id-fo10127/lot-39b93144-fafd-46f0-a29a-b10e00a9064d>

Lot 232



### S/S TANK.

1 x S/s tank on weigh cells. Overall dims approx. 2.1 m high. Tank dims approx. 1.4 m x 1.3 m diameter. Lift out: TBC

**CLICK LINK BELOW to view current price**

<https://www.bidspotter.co.uk/en-gb/auction-catalogues/food-machinery-2000/catalogue-id-fo10127/lot-f594daf7-b15b-40a5-b2f8-b10e00a99e61>

Lot 233



### 2 X S/S PADDLES.

2 x S/s paddles. Lift out: TBC

**CLICK LINK BELOW to view current price**

<https://www.bidspotter.co.uk/en-gb/auction-catalogues/food-machinery-2000/catalogue-id-fo10127/lot-dd118d1c-2c4a-4771-aae1-b10e00a9d5cf>

Lot 234



### 2 X S/S MOBILE PRODUCT HOLDING TANKS.

2 x S/s mobile product holding tanks with lids. Overall dims approx. 700 mm x 750 mm x 1.3 m. Tank dims approx. 460 mm x 460 mm x 750 mm. With bottom centre discharge. Lift out: TBC

**CLICK LINK BELOW to view current price**

<https://www.bidspotter.co.uk/en-gb/auction-catalogues/food-machinery-2000/catalogue-id-fo10127/lot-859dc25b-8000-4b0f-8945-b10e00aa78ab>

Lot 235



### 2 X S/S MOBILE PRODUCT HOLDING TANKS.

2 x S/s mobile product holding tanks with lids. Overall dims approx. 870 mm x 800 mm x 1.4 m. Tank dims approx. 560 mm x 500 mm x 780 mm. With bottom centre discharge. Lift out: TBC

**CLICK LINK BELOW to view current price**

<https://www.bidspotter.co.uk/en-gb/auction-catalogues/food-machinery-2000/catalogue-id-fo10127/lot-e3234d78-65c3-42ba-960e-b10e00aad76e>

Lot 236



### SYSPAL KNEE OPERATED SINK.

1 x Syspal single knee operated sink. Dims approx. 580 mm x 420 mm. Lift out: TBC

**CLICK LINK BELOW to view current price**

<https://www.bidspotter.co.uk/en-gb/auction-catalogues/food-machinery-2000/catalogue-id-fo10127/lot-7c708631-7515-401c-9916-b10e00b0e18a>

Lot 237



### SINGLE SKIN TANK WITH BOTTOM DISCHARGE.

1 x Weldcraft Services single skin tank with bottom discharge. Overall dims approx. 750 mm x 750 mm. Tank dims approx. 530 mm diameter x 650 mm. Lift out: TBC

**CLICK LINK BELOW to view current price**

<https://www.bidspotter.co.uk/en-gb/auction-catalogues/food-machinery-2000/catalogue-id-fo10127/lot-92901718-1521-4d80-a666-b10e00b192e4>

Lot 238



### DIAPHRAGM PUMP.

1 x Diaphragm pump. Lift out: TBC

**CLICK LINK BELOW to view current price**

<https://www.bidspotter.co.uk/en-gb/auction-catalogues/food-machinery-2000/catalogue-id-fo10127/lot-e2606d66-f45b-4fd2-a0d0-b10e00b21ad6>

Lot 239



### S/S FLOW PLATE.

1 x S/s flow plate approx. 350 mm x 400 mm high. Lift out: TBC

**CLICK LINK BELOW to view current price**

<https://www.bidspotter.co.uk/en-gb/auction-catalogues/food-machinery-2000/catalogue-id-fo10127/lot-2e5c0e31-ec47-4251-98df-b10e00b2567d>

Lot 240



#### S/S FLOW PLATE.

1 x S/s flow plate approx. 450 mm x 380 mm high. Lift out: TBC

**CLICK LINK BELOW to view current price**

<https://www.bidspotter.co.uk/en-gb/auction-catalogues/food-machinery-2000/catalogue-id-fo10127/lot-e5726dd6-a439-4606-a0a9-b10e00b2902d>

Lot 241



#### S/S TANK.

1 x S/s tank overall dims approx. 750 mm x 750 mm. Bowl dims approx. 530 mm diameter x 650 mm deep. Lift out: TBC

**CLICK LINK BELOW to view current price**

<https://www.bidspotter.co.uk/en-gb/auction-catalogues/food-machinery-2000/catalogue-id-fo10127/lot-064f06c9-a791-4c05-b24b-b10e00b3287e>

Lot 242



#### S/S SILVERSON MIXER.

1 x Silverson type mixer on s/s holding arm. Approx. 2.7 m high. Lift out: TBC

**CLICK LINK BELOW to view current price**

<https://www.bidspotter.co.uk/en-gb/auction-catalogues/food-machinery-2000/catalogue-id-fo10127/lot-03ea0a3c-54f5-4769-992f-b10e00b39f54>

Lot 243



#### DIAPHRAGM PUMP.

1 x Diaphragm pump. Type SSP. Model DH40-SL-UR. Lift out: TBC

**CLICK LINK BELOW to view current price**

<https://www.bidspotter.co.uk/en-gb/auction-catalogues/food-machinery-2000/catalogue-id-fo10127/lot-52be7f99-9a33-44fb-afdf-b10e00b3fe4b>

Lot 244



### SINGLE SKIN S/S TANK.

1 x Single skin s/s tank approx. 630 mm x 630 mm x 870 mm high. Bowl dims approx. 600 mm diameter x 500 mm deep. Lift out: TBC

**CLICK LINK BELOW to view current price**

<https://www.bidspotter.co.uk/en-gb/auction-catalogues/food-machinery-2000/catalogue-id-fo10127/lot-6cbec285-c286-41a6-bc85-b10e00b47b47>

Lot 245



### ALFA LAVAL HEAT EXCHANGER.

1 x Alfa Laval heat exchanger model H17. Dims approx. 650 mm x 400 mm x 1.2 m high. Lift out: TBC

**CLICK LINK BELOW to view current price**

<https://www.bidspotter.co.uk/en-gb/auction-catalogues/food-machinery-2000/catalogue-id-fo10127/lot-33e7c1b6-7121-4e7b-9a55-b10e00b51eaf>

Lot 246



### CONTROL PANEL.

1 x Control panel. Approx. 800 mm x 300 mm x 1 m high. Lift out: TBC

**CLICK LINK BELOW to view current price**

<https://www.bidspotter.co.uk/en-gb/auction-catalogues/food-machinery-2000/catalogue-id-fo10127/lot-ab-deeed2-c306-43e9-b199-b10e00b5558b>

Lot 247



### S/S SINK.

1 x S/s sink. Approx. 1.3 m x 800 mm x 830 mm high. Internal dims approx. 1.2 m x 680 mm x 380 mm. Lift out: TBC

**CLICK LINK BELOW to view current price**

<https://www.bidspotter.co.uk/en-gb/auction-catalogues/food-machinery-2000/catalogue-id-fo10127/lot-401e374e-e568-4803-823a-b10e00b68ed0>

Lot 248



### BATTER MIXER.

1 x Batter mixing system. Comprising 2 x s/s mixing vessels. Overall dims approx. 1.2 m x 900 mm x 1.85 m high. Internal dims approx. 770 mm x 900 mm deep. On s/s platform with batch controls, with weigh cells, flow meters etc. Lift out: TBC

**CLICK LINK BELOW to view current price**

<https://www.bidspotter.co.uk/en-gb/auction-catalogues/food-machinery-2000/catalogue-id-fo10127/lot-d52496c2-5333-488f-8ea3-b10e00b7c74c>

Lot 249



### DIAPHRAGM PUMP.

1 x Diaphragm pump. On s/s stand. Lift out: TBC

**CLICK LINK BELOW to view current price**

<https://www.bidspotter.co.uk/en-gb/auction-catalogues/food-machinery-2000/catalogue-id-fo10127/lot-7b3b-79bc-4d17-4696-a5d1-b10e00b828cf>

Lot 250



### HOLDING TANK.

1 x S/s product holding tank approx. 850 mm diameter x 1900 m high. Bowl dims approx. 740 mm x 1 m deep. Lift out: TBC

**CLICK LINK BELOW to view current price**

<https://www.bidspotter.co.uk/en-gb/auction-catalogues/food-machinery-2000/catalogue-id-fo10127/lot-e5888cf2-88ef-4f28-97e1-b10e00b8c716>

Lot 251



### BCH JACKETED VESSEL.

1 x BCH jacketed vessel. With mixing action. Design temperature approx. 100 deg c. Dims approx. 1.2 m x 1 m x 2.3 m. Internal bowl dims approx. 900 diameter x 900 mm deep. Lift out: TBC

**CLICK LINK BELOW to view current price**

<https://www.bidspotter.co.uk/en-gb/auction-catalogues/food-machinery-2000/catalogue-id-fo10127/lot-bada4fc4-b0f4-4224-8a1d-b10e00baf00>

Lot 252



### S/S FLOW PLATE.

1 x S/s flow plate approx. 560 mm x 700 mm high. Lift out: TBC

**CLICK LINK BELOW to view current price**

<https://www.bidspotter.co.uk/en-gb/auction-catalogues/food-machinery-2000/catalogue-id-fo10127/lot-6e52d904-5919-4b0a-bc15-b10e00bb9717>

Lot 253



### BCH JACKETED VESSEL.

1 x BCH jacketed vessel. With mixing action. Design temperature approx. 100 deg c. Dims approx. 1.2 m x 1 m x 2.3 m. Internal bowl dims approx. 900 diameter x 900 mm deep. Lift out: TBC

**CLICK LINK BELOW to view current price**

<https://www.bidspotter.co.uk/en-gb/auction-catalogues/food-machinery-2000/catalogue-id-fo10127/lot-f5d72327-1ef4-4c01-ba7e-b10e00bc1112>

Lot 254



### INLINE PUMP.

1 x Inline pump. Lift out: TBC

**CLICK LINK BELOW to view current price**

<https://www.bidspotter.co.uk/en-gb/auction-catalogues/food-machinery-2000/catalogue-id-fo10127/lot-b8b-5f5a7-9044-4dbb-a24a-b10e00bc7e3c>

Lot 255



### FLOW PLATE.

1 x Flow plate. Lift out: TBC

**CLICK LINK BELOW to view current price**

<https://www.bidspotter.co.uk/en-gb/auction-catalogues/food-machinery-2000/catalogue-id-fo10127/lot-d322c642-ce86-4150-a052-b10e00bca4b9>



Lot 256



#### TETRA PAK/ALFA LAVAL TYPE HEAT EXCHANGER.

1 x Tetra Pak Alfa Laval type C6-SH heat exchanger. Dims approx. 1.1 m x 530 mm x 1.5 m. Lift out: TBC Please note that this lot is being offered individually and as part of a combination. The success of the individual lot cannot be determined until the outcome of the combination lot. (See lot 500 - VIRTUALLY BRAND NEW PASTEURISATION PLANT ONLY USED ONCE). The combination starting price will be the total value of the individual lots plus 10%.

**CLICK LINK BELOW to view current price**

<https://www.bidspotter.co.uk/en-gb/auction-catalogues/food-machinery-2000/catalogue-id-fo10127/lot-138bb-7de-84a2-4d74-b115-b10e00c3bdb3>

Lot 257



#### ALFA LAVAL PUMP AND SMALL HEAT EXCHANGER.

1 x Alfa Laval pump and small heat exchanger on s/s frame. Please note that this lot is being offered individually and as part of a combination. The success of the individual lot cannot be determined until the outcome of the combination lot. (See lot 500 - VIRTUALLY BRAND NEW PASTEURISATION PLANT ONLY USED ONCE). The combination starting price will be the total value of the individual lots plus 10%.

**CLICK LINK BELOW to view current price**

<https://www.bidspotter.co.uk/en-gb/auction-catalogues/food-machinery-2000/catalogue-id-fo10127/lot-83d26898-93ec-4b35-8b82-b10e00c56623>

Lot 258



#### SILVERSON INLINE MIXER.

1 x Silverson inline mixer. Machine number 312 /45M 1042. Lift out: TBC Please note that this lot is being offered individually and as part of a combination. The success of the individual lot cannot be determined until the outcome of the combination lot. (See lot 500 - VIRTUALLY BRAND NEW PASTEURISATION PLANT ONLY USED ONCE). The combination starting price will be the total value of the individual lots plus 10%.

**CLICK LINK BELOW to view current price**

<https://www.bidspotter.co.uk/en-gb/auction-catalogues/food-machinery-2000/catalogue-id-fo10127/lot-2fa6692b-a256-4d74-a1dc-b10e00c705dc>

Lot 259



#### CFS HOMOGENISER.

1 x CFS homogeniser. Approx. 1.3 m x 800 mm x 1.2 m. Lift out: TBC Please note that this lot is being offered individually and as part of a combination. The success of the individual lot cannot be determined until the outcome of the combination lot. (See lot 500 - VIRTUALLY BRAND NEW PASTEURISATION PLANT ONLY USED ONCE). The combination starting price will be the total value of the individual lots plus 10%.

**CLICK LINK BELOW to view current price**

<https://www.bidspotter.co.uk/en-gb/auction-catalogues/food-machinery-2000/catalogue-id-fo10127/lot-99cfe7c9-be3e-48b6-9a03-b10e00c801d4>

**Lot 260****TANK, PUMP ETC**

1 x Tank, Alfa Laval think top, pump etc. Lift out: TBC Please note that this lot is being offered individually and as part of a combination. The success of the individual lot cannot be determined until the outcome of the combination lot. (See lot 500 - VIRTUALLY BRAND NEW PASTEURISATION PLANT ONLY USED ONCE). The combination starting price will be the total value of the individual lots plus 10%.

**CLICK LINK BELOW to view current price**

<https://www.bidspotter.co.uk/en-gb/auction-catalogues/food-machinery-2000/catalogue-id-fo10127/lot-fc44ac03-5dd0-489c-8a98-b10e00c8e16c>

**Lot 261****S/S FRAME WITH 9 ALFA LAVAL THINKTOPS.**

1 x S/s frame with holding 9 Alfa Laval thinktops and actuator value. Lift out: TBC Please note that this lot is being offered individually and as part of a combination. The success of the individual lot cannot be determined until the outcome of the combination lot. (See lot 500 - VIRTUALLY BRAND NEW PASTEURISATION PLANT ONLY USED ONCE). The combination starting price will be the total value of the individual lots plus 10%.

**CLICK LINK BELOW to view current price**

<https://www.bidspotter.co.uk/en-gb/auction-catalogues/food-machinery-2000/catalogue-id-fo10127/lot-fdbef-b1a-0343-4ade-8460-b10e00c9e96c>

**Lot 262****PUMP.**

1 x Pump. Model 026.11. Lift out: TBC Please note that this lot is being offered individually and as part of a combination. The success of the individual lot cannot be determined until the outcome of the combination lot. (See lot 500 - VIRTUALLY BRAND NEW PASTEURISATION PLANT ONLY USED ONCE). The combination starting price will be the total value of the individual lots plus 10%.

**CLICK LINK BELOW to view current price**

<https://www.bidspotter.co.uk/en-gb/auction-catalogues/food-machinery-2000/catalogue-id-fo10127/lot-fbd-0d0ef-489c-413d-8b76-b10e00ca50ed>

**Lot 263****ALFA LAVAL HEAT EXCHANGER.**

1 x Alfa Laval Tetra Pak heat exchanger. Model C6-SH. Dims approx. 1.6 m x 550 mm x 1.42 mm high. Lift out: TBC Please note that this lot is being offered individually and as part of a combination. The success of the individual lot cannot be determined until the outcome of the combination lot. (See lot 500 - VIRTUALLY BRAND NEW PASTEURISATION PLANT ONLY USED ONCE). The combination starting price will be the total value of the individual lots plus 10%.

**CLICK LINK BELOW to view current price**

<https://www.bidspotter.co.uk/en-gb/auction-catalogues/food-machinery-2000/catalogue-id-fo10127/lot-309ecc66-5418-48e7-842d-b10e00cbd94e>

**Lot 264****ALFA LAVAL PUMP.**

1 x Alfa Laval type SRU2/018/LD Inline pump. Lift out: TBC Please note that this lot is being offered individually and as part of a combination. The success of the individual lot cannot be determined until the outcome of the combination lot. (See lot 500 - VIRTUALLY BRAND NEW PASTEURISATION PLANT ONLY USED ONCE). The combination starting price will be the total value of the individual lots plus 10%.

**CLICK LINK BELOW to view current price**

<https://www.bidspotter.co.uk/en-gb/auction-catalogues/food-machinery-2000/catalogue-id-fo10127/lot-2a256b9a-6586-40b6-8bf1-b10e00cc8da5>

**Lot 265****SILVERSON INLINE PUMP.**

1 x Silverson inline pump. Model 312/45M1043. Lift out: TBC Please note that this lot is being offered individually and as part of a combination. The success of the individual lot cannot be determined until the outcome of the combination lot. (See lot 500 - VIRTUALLY BRAND NEW PASTEURISATION PLANT ONLY USED ONCE). The combination starting price will be the total value of the individual lots plus 10%.

**CLICK LINK BELOW to view current price**

<https://www.bidspotter.co.uk/en-gb/auction-catalogues/food-machinery-2000/catalogue-id-fo10127/lot-3fc32773-c93b-464c-914b-b10e00ccf0d8>

**Lot 266****2 X S/S TANKS ON S/S FRAME.**

2 x S/s tanks. Mounted on s/s frame. With Alfa Laval pump model 025-01. With Alfa Laval thinktop valves. Overall dimensions frame approx. 1.9 m x 700 mm x 1.5 m high. The tanks are approx. 390 mm diameter x 1 m high. Lift out: TBC Please note that this lot is being offered individually and as part of a combination. The success of the individual lot cannot be determined until the outcome of the combination lot. (See lot 500 - VIRTUALLY BRAND NEW PASTEURISATION PLANT ONLY USED ONCE). The combination starting price will be the total value of the individual lots plus 10%.

**CLICK LINK BELOW to view current price**

<https://www.bidspotter.co.uk/en-gb/auction-catalogues/food-machinery-2000/catalogue-id-fo10127/lot-1333a48e-4fcb-4ed3-b454-b10e00ce2001>

**Lot 267****S/S TANK.**

1 x S/s tank approx. 600 mm wide x 1.3 m high. Diameter approx. 400 mm x 1 m high. Lift out: TBC Please note that this lot is being offered individually and as part of a combination. The success of the individual lot cannot be determined until the outcome of the combination lot. (See lot 500 - VIRTUALLY BRAND NEW PASTEURISATION PLANT ONLY USED ONCE). The combination starting price will be the total value of the individual lots plus 10%.

**CLICK LINK BELOW to view current price**

<https://www.bidspotter.co.uk/en-gb/auction-catalogues/food-machinery-2000/catalogue-id-fo10127/lot-6305d7a5-6764-47e2-a420-b10e00d3e2fe>

## Lot 268



### THINKTOP VALVES.

1 x Alfa Laval thinktops. Consisting 11 thinktop valves. Lift out: TBC Please note that this lot is being offered individually and as part of a combination. The success of the individual lot cannot be determined until the outcome of the combination lot. (See lot 500 - VIRTUALLY BRAND NEW PASTEURISATION PLANT ONLY USED ONCE). The combination starting price will be the total value of the individual lots plus 10%.

**CLICK LINK BELOW to view current price**

<https://www.bidspotter.co.uk/en-gb/auction-catalogues/food-machinery-2000/catalogue-id-fo10127/lot-64072183-58db-4637-a31d-b10e00d47651>

## Lot 269



### INLINE PUMP.

1 x Alfa Laval inline pump type SRUZ/018/LS. Lift out: TBC Please note that this lot is being offered individually and as part of a combination. The success of the individual lot cannot be determined until the outcome of the combination lot. (See lot 500 - VIRTUALLY BRAND NEW PASTEURISATION PLANT ONLY USED ONCE). The combination starting price will be the total value of the individual lots plus 10%.

**CLICK LINK BELOW to view current price**

<https://www.bidspotter.co.uk/en-gb/auction-catalogues/food-machinery-2000/catalogue-id-fo10127/lot-f007a789-ffc1-4626-b123-b10e00d877be>

## Lot 270



### ALFA LAVAL PUMP.

1 x Alfa Laval pump model 021-02. Lift out: TBC Please note that this lot is being offered individually and as part of a combination. The success of the individual lot cannot be determined until the outcome of the combination lot. (See lot 500 - VIRTUALLY BRAND NEW PASTEURISATION PLANT ONLY USED ONCE). The combination starting price will be the total value of the individual lots plus 10%.

**CLICK LINK BELOW to view current price**

<https://www.bidspotter.co.uk/en-gb/auction-catalogues/food-machinery-2000/catalogue-id-fo10127/lot-229e6459-72d4-4bf7-8bbc-b10e00d8bf30>

## Lot 270A



### CONTROL PANELS.

1 x Various control panels. Lift out: TBC Please note that this lot is being offered individually and as part of a combination. The success of the individual lot cannot be determined until the outcome of the combination lot. (See lot 500 - VIRTUALLY BRAND NEW PASTEURISATION PLANT ONLY USED ONCE). The combination starting price will be the total value of the individual lots plus 10%.

**CLICK LINK BELOW to view current price**

<https://www.bidspotter.co.uk/en-gb/auction-catalogues/food-machinery-2000/catalogue-id-fo10127/lot-5330537a-8633-40a3-b873-b10e00d92015>

Lot 271



### HYDRAIR FLUID SYSTEMS BARREL PUMP.

1 x Mobile Hydrair Fluid Systems barrel pump. Approx. 1.2 m x 1.2 m x 2.1 m high. Lift out: TBC

**CLICK LINK BELOW to view current price**

<https://www.bidspotter.co.uk/en-gb/auction-catalogues/food-machinery-2000/catalogue-id-fo10127/lot-0e58d8f2-5273-4d90-b94c-b10e00d9ea6b>

Lot 272



### 2 X FLOW PLATES.

2 x Flow plates. Approx. 900 mm x 1 m and 480 mm x 500 mm. Lift out: TBC

**CLICK LINK BELOW to view current price**

<https://www.bidspotter.co.uk/en-gb/auction-catalogues/food-machinery-2000/catalogue-id-fo10127/lot-68d9ce5d-cd04-462a-8c6f-b10e00da3ef4>

Lot 273



### BROOK COMPTON MOTOR.

1 x Brook Compton motor. Lift out: TBC

**CLICK LINK BELOW to view current price**

<https://www.bidspotter.co.uk/en-gb/auction-catalogues/food-machinery-2000/catalogue-id-fo10127/lot-bf18340a-6c01-4567-8037-b10e00da9400>

Lot 274



### PLASTIC SHELF UNIT.

1 x Plastic shelf unit. Overall dims approx. 2 m x 1.4 m. Lift out: TBC

**CLICK LINK BELOW to view current price**

<https://www.bidspotter.co.uk/en-gb/auction-catalogues/food-machinery-2000/catalogue-id-fo10127/lot-88138511-5aaf-41f1-9e59-b10e00dbc0f7>

Lot 275



QTY APPROX. 18 X S/S BUCKETS.

1 x Qty of s/s buckets approx.18. Lift out: TBC

**CLICK LINK BELOW to view current price**

<https://www.bidspotter.co.uk/en-gb/auction-catalogues/food-machinery-2000/catalogue-id-fo10127/lot-a28e4723-c122-4776-9952-b10e00dc10db>

Lot 276



NEWSMITH TRAY WASHER.

1 x All s/s Newsmith tray washer model KM544. Belt driven. Aperture size approx. 760 mm x 330 mm high. Overall dims approx. 6.3 m x 1.6 m x 2.1 m high. Lift out: TBC

**CLICK LINK BELOW to view current price**

<https://www.bidspotter.co.uk/en-gb/auction-catalogues/food-machinery-2000/catalogue-id-fo10127/lot-1289994a-3c2b-4877-b938-b10e00dce1cf>

Lot 277



QTY APPROX. 60 BRUTE BINS.

1 x Qty Brute bins, approx. 60 bins in total. Internal dims approx. 460 mm x 560 mm high. Lift out: TBC

**CLICK LINK BELOW to view current price**

<https://www.bidspotter.co.uk/en-gb/auction-catalogues/food-machinery-2000/catalogue-id-fo10127/lot-3c8c48fb-58ba-4d5f-af4b-b10e00dda7f3>

Lot 278



QTY OF BIN LIDS INCLUDING PLASTIC CONTAINERS.

1 x Qty of bin lids including plastic containers. Lift out: TBC

**CLICK LINK BELOW to view current price**

<https://www.bidspotter.co.uk/en-gb/auction-catalogues/food-machinery-2000/catalogue-id-fo10127/lot-3a7107e0-f6dd-434e-9c04-b10e00de3881>

Lot 279



### COMPLETE CIP ROOM.

1 x Complete CIP room. Comprising control panels, valves, 4 x Ecolabs XL units, flow meters and various tanks dimensions of which are 2.3 m x 1 m x 1.6 m, 1.3 m x 1 m x 1.5 m, 1 m x 1.5 m x 900 mm x Overall height 1.6 m high, 1.9 m x 600 mm x 1.7 m high, heat exchanger CCP 026.L5P approx. 1 m x 600 mm x 1.4 m high and a model GC26P\*26 which is approx. 800 mm x 500 mm x 1.3 m, Heat exchanger GX12NT. Lift out: TBC

**CLICK LINK BELOW to view current price**

<https://www.bidspotter.co.uk/en-gb/auction-catalogues/food-machinery-2000/catalogue-id-fo10127/lot-d1c1d-dd8-24cb-4896-9fe5-b10e00e555d8>

Lot 280



### S/S SINK.

1 x S/s sink. Approx. 600 mm x 400 mm. Lift out: TBC

**CLICK LINK BELOW to view current price**

<https://www.bidspotter.co.uk/en-gb/auction-catalogues/food-machinery-2000/catalogue-id-fo10127/lot-569e21d9-9fd3-4edf-bb91-b10e00e5f36e>

Lot 281



### S/S UTENSIL SINK.

1 x S/s utensil sink approx. 760 mm x 880 mm x 1.1 m high. Lift out: TBC

**CLICK LINK BELOW to view current price**

<https://www.bidspotter.co.uk/en-gb/auction-catalogues/food-machinery-2000/catalogue-id-fo10127/lot-5477c82b-aab3-46f6-9047-b10e00e63d91>

Lot 282



### S/S SINK.

1 x s/s sink. Approx. 600 mm x 400 mm. Lift out: TBC

**CLICK LINK BELOW to view current price**

<https://www.bidspotter.co.uk/en-gb/auction-catalogues/food-machinery-2000/catalogue-id-fo10127/lot-e7c0edcc-f475-480c-b312-b10e00e676ec>

Lot 283



### APV SPIRAL FREEZER.

1 x APV spiral freezer with 860 mm wide belt. Room dimensions approx. 7.8 m x 7.8 m square x 9.5 m high. 102 mm product gap. Lift out: TBC

**CLICK LINK BELOW to view current price**

<https://www.bidspotter.co.uk/en-gb/auction-catalogues/food-machinery-2000/catalogue-id-fo10127/lot-4e916f79-26c2-4dad-b2a8-b10e00e7415e>

Lot 284



### BTR ENVIRONMENTAL DUST EXTRACTION SYSTEM.

1 x Dust extraction system. Dims approx. 1.8 m x 1.1 m x 2.9 m high. Lift out: TBC

**CLICK LINK BELOW to view current price**

<https://www.bidspotter.co.uk/en-gb/auction-catalogues/food-machinery-2000/catalogue-id-fo10127/lot-212fc-c6f-ab7b-49fe-aab0-b10e00e7f674>

Lot 285



### S/S SINK.

1 x S/s sink fully automatic approx. 1.5 m x 400 mm. Lift out: TBC

**CLICK LINK BELOW to view current price**

<https://www.bidspotter.co.uk/en-gb/auction-catalogues/food-machinery-2000/catalogue-id-fo10127/lot-8bfef-0bc-54ad-4466-b7a0-b10e00e83c6b>

Lot 286



### S/S BENCH.

1 x S/s bench approx. 1.8 m long x 400 mm deep. Lift out: TBC

**CLICK LINK BELOW to view current price**

<https://www.bidspotter.co.uk/en-gb/auction-catalogues/food-machinery-2000/catalogue-id-fo10127/lot-c1c80ea9-a162-4740-8c07-b10e00e88073>



Lot 287



#### S/S LOCKABLE CAGE.

1 x S/s lockable cage. Fixed to the wall. Approx. 900 mm x 1.8 m x 2.3 m high. Lift out: TBC

**CLICK LINK BELOW to view current price**

<https://www.bidspotter.co.uk/en-gb/auction-catalogues/food-machinery-2000/catalogue-id-fo10127/lot-4246d244-766c-4f0b-90ba-b10e00e8ff78>

Lot 288



#### FLOOR SCRUBBER.

1 x Floor scrubber, shown located inside cage. Lift out: TBC

**CLICK LINK BELOW to view current price**

<https://www.bidspotter.co.uk/en-gb/auction-catalogues/food-machinery-2000/catalogue-id-fo10127/lot-77fc5b35-d10d-4230-b71b-b10e00e9388c>

Lot 289



#### S/S TABLE.

1 x S/s table approx. 550 mm x 550 mm. Lift out: TBC

**CLICK LINK BELOW to view current price**

<https://www.bidspotter.co.uk/en-gb/auction-catalogues/food-machinery-2000/catalogue-id-fo10127/lot-266d9530-1a63-4160-8db3-b10e00e96eb3>

Lot 290



#### SHELVING UNIT.

1 x Shelving unit with 4-shelves. Approx. 4.7 m long x 600 mm deep x 1.55 m high. Lift out: TBC

**CLICK LINK BELOW to view current price**

<https://www.bidspotter.co.uk/en-gb/auction-catalogues/food-machinery-2000/catalogue-id-fo10127/lot-0316ee3e-a203-49f1-ac4a-b10e00e9f63d>

Lot 291



### S/S FOGGER.

1 x S/s fogger. Dimensions approx. 500 mm x 400 mm. Lift out: TBC

**CLICK LINK BELOW to view current price**

<https://www.bidspotter.co.uk/en-gb/auction-catalogues/food-machinery-2000/catalogue-id-fo10127/lot-592815ea-f82d-4d92-9800-b10e00ea34e2>

Lot 293



### S/S TABLE.

1 x S/s table approx. 900 mm x 600 mm. Lift out: TBC

**CLICK LINK BELOW to view current price**

<https://www.bidspotter.co.uk/en-gb/auction-catalogues/food-machinery-2000/catalogue-id-fo10127/lot-180a0834-b696-4a2c-aeb8-b10e00ea72be>

Lot 294



### S/S TABLE.

1 x S/s table approx. 900 mm x 600 mm. Lift out: TBC

**CLICK LINK BELOW to view current price**

<https://www.bidspotter.co.uk/en-gb/auction-catalogues/food-machinery-2000/catalogue-id-fo10127/lot-792d16cd-97ef-4b44-b73c-b10e00ea971c>

Lot 295



### SHELVING UNIT.

1 x Shelving unit approx. 2 m long x 400 mm wide. Overall dims approx. 950 mm x 1.5 m high. Lift out: TBC

**CLICK LINK BELOW to view current price**

<https://www.bidspotter.co.uk/en-gb/auction-catalogues/food-machinery-2000/catalogue-id-fo10127/lot-bd8e-da1e-51b0-4d18-b822-b10e00eaca26>

Lot 296



### S/S TOPPED TABLE.

1 x S/s topped table approx. 1.8 m x 600 mm. Lift out: TBC

**CLICK LINK BELOW to view current price**

<https://www.bidspotter.co.uk/en-gb/auction-catalogues/food-machinery-2000/catalogue-id-fo10127/lot-1fb48278-a969-44c5-8365-b10e00eaf662>

Lot 297



### S/S TABLE.

1 x S/s table. Lift out: TBC

**CLICK LINK BELOW to view current price**

<https://www.bidspotter.co.uk/en-gb/auction-catalogues/food-machinery-2000/catalogue-id-fo10127/lot-4bd-ca498-b4da-4238-a4ad-b10e00eb585e>

Lot 298



### LECTERN.

1 x Lectern approx. 1 m x 360 mm x 1 m. Lift out: TBC

**CLICK LINK BELOW to view current price**

<https://www.bidspotter.co.uk/en-gb/auction-catalogues/food-machinery-2000/catalogue-id-fo10127/lot-26fef8f3-430f-413a-a779-b10e00ee8658>

Lot 299



### LECTERN.

1 x Lectern approx. 1 m x 360 mm x 1 m. Lift out: TBC

**CLICK LINK BELOW to view current price**

<https://www.bidspotter.co.uk/en-gb/auction-catalogues/food-machinery-2000/catalogue-id-fo10127/lot-5c4e7c7f-ae06-495a-9155-b10e00eea79e>

Lot 300



LECTERN.

1 x Lectern approx. 1 m x 360 mm x 1 m. Lift out: TBC

CLICK LINK BELOW to view current price

<https://www.bidspotter.co.uk/en-gb/auction-catalogues/food-machinery-2000/catalogue-id-fo10127/lot-f36cd571-66c1-40f7-b967-b10e00eec89a>

Lot 301



LECTERN.

1 x Lectern approx. 1 m x 360 mm x 1 m. Lift out: TBC

CLICK LINK BELOW to view current price

<https://www.bidspotter.co.uk/en-gb/auction-catalogues/food-machinery-2000/catalogue-id-fo10127/lot-7d8bd593-1676-4dcd-b91c-b10e00eee911>

Lot 302



S/S TABLE.

1 x S/s table approx. 1 m x 560 mm. Lift out: TBC

CLICK LINK BELOW to view current price

<https://www.bidspotter.co.uk/en-gb/auction-catalogues/food-machinery-2000/catalogue-id-fo10127/lot-c22520fa-79bb-4e98-a35e-b10e00ef0bf7>

Lot 303



S/S TABLE.

1 x S/s table approx. 800 mm x 700 mm. Lift out: TBC

CLICK LINK BELOW to view current price

<https://www.bidspotter.co.uk/en-gb/auction-catalogues/food-machinery-2000/catalogue-id-fo10127/lot-dfa030ac-5e5c-4817-8d83-b10e00f0ac52>

Lot 304



S/S TABLE.

1 x S/s table approx. 1 m x 560 mm. Lift out: TBC

CLICK LINK BELOW to view current price

<https://www.bidspotter.co.uk/en-gb/auction-catalogues/food-machinery-2000/catalogue-id-fo10127/lot-01ab4ace-5676-48ee-b760-b10e00ef30ef>

Lot 305



S/S TABLE.

1 x S/s table approx. 1.4 m x 760 mm. Lift out: TBC

CLICK LINK BELOW to view current price

<https://www.bidspotter.co.uk/en-gb/auction-catalogues/food-machinery-2000/catalogue-id-fo10127/lot-3a02f987-8b89-4a5d-ba22-b10e00ef69c9>

Lot 306



S/S TOPPED TABLE.

1 x S/s topped table approx. 900 mm x 600 mm. Lift out: TBC

CLICK LINK BELOW to view current price

<https://www.bidspotter.co.uk/en-gb/auction-catalogues/food-machinery-2000/catalogue-id-fo10127/lot-f470c563-3a80-4308-8078-b10e00ef9565>

Lot 307



S/S TABLE.

1 x S/s table approx. 900 mm x 460 mm. Lift out: TBC

CLICK LINK BELOW to view current price

<https://www.bidspotter.co.uk/en-gb/auction-catalogues/food-machinery-2000/catalogue-id-fo10127/lot-0f328c-fa-30f7-43b3-a089-b10e00efbb38>

Lot 308



S/S TABLE.

1 x S/s table approx. 1.2 m x 760 mm. Lift out: TBC

**CLICK LINK BELOW to view current price**

<https://www.bidspotter.co.uk/en-gb/auction-catalogues/food-machinery-2000/catalogue-id-fo10127/lot-447f75cb-a721-4fd9-946a-b10e00efe489>

Lot 309



S/S TABLE.

1 x S/s table approx. 1.2 m x 600 mm. Lift out: TBC

**CLICK LINK BELOW to view current price**

<https://www.bidspotter.co.uk/en-gb/auction-catalogues/food-machinery-2000/catalogue-id-fo10127/lot-7c7fe67c-da98-498c-90c0-b10e00f0208f>

Lot 310



S/S SINK.

1 x S/s fully automatic sink approx. 1.2 m x 400 mm. Lift out: TBC

**CLICK LINK BELOW to view current price**

<https://www.bidspotter.co.uk/en-gb/auction-catalogues/food-machinery-2000/catalogue-id-fo10127/lot-365dc64d-1d65-4614-8136-b10e00f063f3>

Lot 311



S/S TOPPED TABLE.

1 x S/s topped table approx. 1.2 m x 600 mm. Lift out: TBC

**CLICK LINK BELOW to view current price**

<https://www.bidspotter.co.uk/en-gb/auction-catalogues/food-machinery-2000/catalogue-id-fo10127/lot-2231e999-bb54-4959-8de9-b10e00f0e616>

Lot 312



S/S TABLE.

1 x S/s table approx. 900 mm x 600 mm. Lift out: TBC

CLICK LINK BELOW to view current price

<https://www.bidspotter.co.uk/en-gb/auction-catalogues/food-machinery-2000/catalogue-id-fo10127/lot-36219a7a-d2a7-439d-8ffb-b10e00f1c591>

Lot 313



S/S TABLE.

1 x S/s table approx. 700 mm x 500 mm. Lift out: TBC

CLICK LINK BELOW to view current price

<https://www.bidspotter.co.uk/en-gb/auction-catalogues/food-machinery-2000/catalogue-id-fo10127/lot-ca255848-7a1b-4164-a6c2-b10e00f1f96f>

Lot 314



S/S TABLE WITH SIDE TABLE.

1 x S/s table with side table. Overall dims approx. 1.1 m x 600 m. Lift out: TBC

CLICK LINK BELOW to view current price

<https://www.bidspotter.co.uk/en-gb/auction-catalogues/food-machinery-2000/catalogue-id-fo10127/lot-3157eec8-15cf-4125-a6f6-b10e00f23cd2>

Lot 315



2 X TOTE BINS.

2 x Tote bins, 200 litre. Lift out: TBC

CLICK LINK BELOW to view current price

<https://www.bidspotter.co.uk/en-gb/auction-catalogues/food-machinery-2000/catalogue-id-fo10127/lot-1e1a4d48-208c-4eea-abab-b10e00f2c115>

Lot 316



### S/S TOTE BINS.

2 x S/s tote bins. Lift out: TBC

**CLICK LINK BELOW to view current price**

<https://www.bidspotter.co.uk/en-gb/auction-catalogues/food-machinery-2000/catalogue-id-fo10127/lot-ed0b3551-327a-4286-abaa-b10e00f4209c>

Lot 317



### 3 X S/S TOTE BINS.

3 x S/s tote bins. Lift out: TBC

**CLICK LINK BELOW to view current price**

<https://www.bidspotter.co.uk/en-gb/auction-catalogues/food-machinery-2000/catalogue-id-fo10127/lot-6f49d1b7-7b49-48f5-b6de-b10e00f4b5a7>

Lot 318



### 3 X MOBILE TANKS.

3 x Mobile tanks approx. 470 mm x 800 mm. Front outlet. Lift out: TBC

**CLICK LINK BELOW to view current price**

<https://www.bidspotter.co.uk/en-gb/auction-catalogues/food-machinery-2000/catalogue-id-fo10127/lot-2e3e8b-ca-a5c0-4413-b6ed-b10e00f50df6>

Lot 319



### VARIABLE SPEED CONVEYOR.

1 x Variable speed conveyor. 250 mm belt width, approx. 1.2 m long. Lift out: TBC

**CLICK LINK BELOW to view current price**

<https://www.bidspotter.co.uk/en-gb/auction-catalogues/food-machinery-2000/catalogue-id-fo10127/lot-8e965c47-ee53-40b3-b96d-b10e00f91d6b>



Lot 320



### LOMA SUPERSCAN METAL DETECTOR.

1 x Loma Superscan ferrous in foil metal detector. Air blast reject into lockable bin. With bin full and reject confirmation. Aperture size approx. 350 mm x 120 mm. Overall dimensions approx. 1.5 m x 900 mm. Lift out: TBC

**CLICK LINK BELOW to view current price**

<https://www.bidspotter.co.uk/en-gb/auction-catalogues/food-machinery-2000/catalogue-id-fo10127/lot-0a475235-d5b1-49f1-b7b5-b10e00f9c6c4>

Lot 321



### 90 DEGREE BEND CONVEYOR.

1 x 90 degree bend conveyor. Belt width 250 mm. Running for approx. 1.8 m and then bearing right for 900 mm. Overall length approx. 2.2 m x 1.3 m wide. Lift out: TBC

**CLICK LINK BELOW to view current price**

<https://www.bidspotter.co.uk/en-gb/auction-catalogues/food-machinery-2000/catalogue-id-fo10127/lot-61addf2b-e84c-46be-ac92-b10e00fa6189>

Lot 322



### 90 DEGREE BEND CONVEYOR.

1 x 90 degree bend conveyor. Slatted belt. 250 mm belt width. Running for 900 mm then turns for 900 mm. Overall dimensions approx. 1.4 m x 1.2 m wide. Lift out: TBC

**CLICK LINK BELOW to view current price**

<https://www.bidspotter.co.uk/en-gb/auction-catalogues/food-machinery-2000/catalogue-id-fo10127/lot-b3ccc478-8ca3-4510-aca2-b10e00faddab>

Lot 323



### ARMAGARD S/S COMPUTER HOUSING.

1 x Armagard s/s computer housing approx. 600 mm x 700 mm x 1.5 m high. Lift out: TBC

**CLICK LINK BELOW to view current price**

<https://www.bidspotter.co.uk/en-gb/auction-catalogues/food-machinery-2000/catalogue-id-fo10127/lot-be27373a-eab7-4723-b460-b10e00fb4de3>

Lot 324



### ORION PALLET WRAPPER.

1 x Orion pallet wrapper. With ramp. Approx. 2.7 m. Ramp 1.4 m. Bed width approx. 1.7 m. Overall height approx. 2.2 m high. Lift out: TBC

**CLICK LINK BELOW to view current price**

<https://www.bidspotter.co.uk/en-gb/auction-catalogues/food-machinery-2000/catalogue-id-fo10127/lot-90e71fae-8144-447a-8030-b10e00f04a>

Lot 325



### ACCESS STEPS.

1 x Access steps. Approx. 1.2 m to the top step. 500 mm wide x 1.3 m deep. 2.1 m overall height. Lift out: TBC

**CLICK LINK BELOW to view current price**

<https://www.bidspotter.co.uk/en-gb/auction-catalogues/food-machinery-2000/catalogue-id-fo10127/lot-89c157d8-9ec5-4a8a-947f-b10e00fc7ea8>

Lot 326



### S/S SHELF UNIT.

1 x S/s shelf unit. 3-shelf. 1.1 m wide x 300 mm deep x 1.6 m high. Lift out: TBC

**CLICK LINK BELOW to view current price**

<https://www.bidspotter.co.uk/en-gb/auction-catalogues/food-machinery-2000/catalogue-id-fo10127/lot-5830795d-7ae7-4bdc-ac5d-b10e00fc149>

Lot 327



### APV 8-TRAY ELECTRIC OVEN.

1 x APV 8-tray oven. Electric. Approx. 750 mm x 1 m x 1.9 m high. Lift out: TBC

**CLICK LINK BELOW to view current price**

<https://www.bidspotter.co.uk/en-gb/auction-catalogues/food-machinery-2000/catalogue-id-fo10127/lot-74fe2c57-d430-4d6c-8f3e-b10e00fd3e9c>

Lot 328



### TOM CHANDLEY COMPACTA 2-DECK OVEN.

1 x Tom Chandley Compacta 2-deck oven. All s/s. Approx. 1.3 m x 1 m x 1.6 m high. Deck size approx. 900 mm wide x 200 mm high. Lift out: TBC

**CLICK LINK BELOW to view current price**

<https://www.bidspotter.co.uk/en-gb/auction-catalogues/food-machinery-2000/catalogue-id-fo10127/lot-605782bb-2800-4e77-889a-b10e00fe6f5c>

Lot 329



### NORDSON GLUER.

1 x Nordson gluer. Lift out: TBC

**CLICK LINK BELOW to view current price**

<https://www.bidspotter.co.uk/en-gb/auction-catalogues/food-machinery-2000/catalogue-id-fo10127/lot-cb-84fb61-08dc-4895-8a8f-b10e01040817>

Lot 330



### LOCKABLE CHEMICAL CUPBOARD.

1 x Wall mounted lockable chemical cupboard. Approx. 450 mm x 300 mm x 600 mm. Lift out: TBC

**CLICK LINK BELOW to view current price**

<https://www.bidspotter.co.uk/en-gb/auction-catalogues/food-machinery-2000/catalogue-id-fo10127/lot-172a06cf-27a7-4113-9b0a-b10e0105cf74>

Lot 331



### SINK.

1 x Sink. Fully automatic. Approx. 600 mm x 460 mm. Lit out: TBC

**CLICK LINK BELOW to view current price**

<https://www.bidspotter.co.uk/en-gb/auction-catalogues/food-machinery-2000/catalogue-id-fo10127/lot-ccacf26b-b482-42ca-8a0b-b10e0109571f>

Lot 332



#### UTENSIL SINK.

1 x Utensil sink. Approx. 600 mm x 460 mm. Lift out: TBC

**CLICK LINK BELOW to view current price**

<https://www.bidspotter.co.uk/en-gb/auction-catalogues/food-machinery-2000/catalogue-id-fo10127/lot-cf-d5e785-9e11-415f-a64b-b10e01098ceb>

Lot 333



#### AIREDALE EXTRACTION UNIT.

1 x Airedale air extraction unit. Approx. 1.8 m wide x 700 mm deep x 2.4 m high. Lift out: TBC

**CLICK LINK BELOW to view current price**

<https://www.bidspotter.co.uk/en-gb/auction-catalogues/food-machinery-2000/catalogue-id-fo10127/lot-10fc8f2c-c6a2-4ad7-b3d9-b10e00a48615>

Lot 334



#### SYSPAL S/S SINK.

1 x Syspal s/s sink, fully automatic. Approx. 1 m x 400 mm. Lift out: TBC

**CLICK LINK BELOW to view current price**

<https://www.bidspotter.co.uk/en-gb/auction-catalogues/food-machinery-2000/catalogue-id-fo10127/lot-543ea4d2-1550-465c-b66f-b10e00a5f33b>

Lot 335



#### AFT DEPOSITOR.

1 x AFT spot depositor with eye. mobile. With rise and fall head. Dimensions approx. 650 mm wide x 800 mm x 1.8 m high. lift out TBC

**CLICK LINK BELOW to view current price**

<https://www.bidspotter.co.uk/en-gb/auction-catalogues/food-machinery-2000/catalogue-id-fo10127/lot-e71b0610-8ede-458c-bae0-b10e00a3e18e>

Lot 336



### BATTER MIXER.

1 x Batter mixer with full process controls. Batter mixer dims approx. 680 mm wide x 600 mm high. Lift out: TBC

**CLICK LINK BELOW to view current price**

<https://www.bidspotter.co.uk/en-gb/auction-catalogues/food-machinery-2000/catalogue-id-fo10127/lot-f4c83e75-4642-459b-91e8-b10e00a55a30>

Lot 337



### ECOLAB STEAM CLEANER.

1 x Ecolab wall mounted steam cleaning system with hose reel. Lift out: TBC

**CLICK LINK BELOW to view current price**

<https://www.bidspotter.co.uk/en-gb/auction-catalogues/food-machinery-2000/catalogue-id-fo10127/lot-e83c0edd-cc5a-4fa4-b179-b10e00a62dcb>

Lot 338



### TOTE BIN & MOBILE PRODUCT HOPPER.

1 x S/S tote bin and mobile product hopper. Lift out: TBC

**CLICK LINK BELOW to view current price**

<https://www.bidspotter.co.uk/en-gb/auction-catalogues/food-machinery-2000/catalogue-id-fo10127/lot-694f631b-da63-4fc6-acf9-b10e00a668dc>

Lot 339



### TOTE BIN.

1 x S/S tote bin. Contents excluded. Lift out: TBC

**CLICK LINK BELOW to view current price**

<https://www.bidspotter.co.uk/en-gb/auction-catalogues/food-machinery-2000/catalogue-id-fo10127/lot-e00773b0-8fca-4b56-a9a3-b10e00a6d269>

Lot 340



### 3 X TOTE BINS.

3 x S/s tote bins with lids. Lift out: TBC

**CLICK LINK BELOW to view current price**

<https://www.bidspotter.co.uk/en-gb/auction-catalogues/food-machinery-2000/catalogue-id-fo10127/lot-56298d2d-0552-4d80-9d6a-b10e00a78126>

Lot 341



### S/S TABLE.

1 x S/s table with shelf approx. 850 mm x 500 mm x 980 mm. Lift out: TBC

**CLICK LINK BELOW to view current price**

<https://www.bidspotter.co.uk/en-gb/auction-catalogues/food-machinery-2000/catalogue-id-fo10127/lot-eab70bb7-a45e-4173-9d71-b10e00a78126>

Lot 342



### S/S TOTE BIN.

1 x S/s tote bin. Lift out: TBC

**CLICK LINK BELOW to view current price**

<https://www.bidspotter.co.uk/en-gb/auction-catalogues/food-machinery-2000/catalogue-id-fo10127/lot-0d6d3f49-1a65-4c60-b808-b10e00af93f5>

Lot 343



### DC NORRIS CAN OPENER ON TABLE.

1 x DC Norris can opener on table. Table dims approx. 600 mm x 600 mm. Lift out: TBC

**CLICK LINK BELOW to view current price**

<https://www.bidspotter.co.uk/en-gb/auction-catalogues/food-machinery-2000/catalogue-id-fo10127/lot-7f83cf59-39d6-4475-84c1-b10e00afd62>

Lot 344



### PLASTIC RACK 4-SHELF.

1 x Plastic rack. 4 shelf. Contents excluded. Dims approx. 1.4 m wide x 600 mm deep x 1.4 m high. Lift out: TBC

**CLICK LINK BELOW to view current price**

<https://www.bidspotter.co.uk/en-gb/auction-catalogues/food-machinery-2000/catalogue-id-fo10127/lot-6a194daa-1a83-4bed-930f-b10e00b06dd6>

Lot 345



### PUMP SYSTEM.

1 x Pump system with 2 x Sampson flow meters and 2x inline pumps, plus valves etc., as shown in photograph. Lift out: TBC

**CLICK LINK BELOW to view current price**

<https://www.bidspotter.co.uk/en-gb/auction-catalogues/food-machinery-2000/catalogue-id-fo10127/lot-2bbe7927-8edd-4d7b-b98a-b10e00b0c324>

Lot 346



### 3 X S/S PARTS TROLLEYS.

3 x S/s mobile parts trolleys with 4 trays in each trolley. Excludes contents. Dims approx. 520 mm wide x 900 mm x 900 m high. Lift out: TBC

**CLICK LINK BELOW to view current price**

<https://www.bidspotter.co.uk/en-gb/auction-catalogues/food-machinery-2000/catalogue-id-fo10127/lot-f8887bb0-285a-4406-b74f-b10e00b2407e>

Lot 347



### STEPS.

1 x S/s steps. Distance to top step 830 mm. Overall dims approx. 500 mm wide x 1.1 m. Lift out: TBC

**CLICK LINK BELOW to view current price**

<https://www.bidspotter.co.uk/en-gb/auction-catalogues/food-machinery-2000/catalogue-id-fo10127/lot-a4e4b16b-c5f4-47f0-a4ad-b10e00b2f9db>

Lot 348



### STAINLESS STEEL TROUGH.

1 x S/s mobile trough approx. 750 mm x 400 mm x 200 mm deep. Lift out: TBC

**CLICK LINK BELOW to view current price**

<https://www.bidspotter.co.uk/en-gb/auction-catalogues/food-machinery-2000/catalogue-id-fo10127/lot-9b00d-fe3-1943-4905-bd0d-b10e00b4791e>

Lot 349



### MUNTERS ML1100 DEHUMIDIFIER.

1 x Munters ML1100dehumidifier. Lift out: TBC

**CLICK LINK BELOW to view current price**

<https://www.bidspotter.co.uk/en-gb/auction-catalogues/food-machinery-2000/catalogue-id-fo10127/lot-fb7e53c1-be86-4572-aa45-b10e00b7f900>

Lot 350



### SINK, WATER FOUNTAIN & PAPER TOWEL DISPENSER.

1 x S/s knee operated sink with water fountain and paper towel dispenser. Lift out: TBC

**CLICK LINK BELOW to view current price**

<https://www.bidspotter.co.uk/en-gb/auction-catalogues/food-machinery-2000/catalogue-id-fo10127/lot-97d44d1c-7a5b-42d8-a7e0-b10e00b884c21>

Lot 351



### SYSPAL 2-STATION AUTO SINK.

1 x Syspal 2-station automatic sink. Dimensions approx. 1.1 m x 400 mm. Lift out: TBC

**CLICK LINK BELOW to view current price**

<https://www.bidspotter.co.uk/en-gb/auction-catalogues/food-machinery-2000/catalogue-id-fo10127/lot-87465c98-e6ef-4241-9fb2-b10e00b88703>



Lot 352



### 2 X MOBILE PARTS TROLLEYS.

2 x S/s mobile parts trolleys with 4 trays. Excludes contents. Dimensions approx. 850 mm x 530 mm x 910 mm. Lift out: TBC

**CLICK LINK BELOW to view current price**

<https://www.bidspotter.co.uk/en-gb/auction-catalogues/food-machinery-2000/catalogue-id-fo10127/lot-b529193d-1444-4c5d-944c-b10e00b8e2d5>

Lot 353



### 3 x MOBILE PARTS TROLLEYS.

3 x S/s mobile parts trolleys with 4 trays. Excludes contents. Dimensions approx. 850 mm x 530 mm x 910 mm. Lift out: TBC

**CLICK LINK BELOW to view current price**

<https://www.bidspotter.co.uk/en-gb/auction-catalogues/food-machinery-2000/catalogue-id-fo10127/lot-ac1ceaaa-9248-4859-8510-b10e00b90945>

Lot 354



### 3-STATION DEEP SINK.

1 x 3-Station s/s sink. Overall dimensions approx. 2.8 m x 650 mm x 900 mm. Each sink being 900 mm x 600 mm x 450 mm. Lift out: TBC

**CLICK LINK BELOW to view current price**

<https://www.bidspotter.co.uk/en-gb/auction-catalogues/food-machinery-2000/catalogue-id-fo10127/lot-6e7d-c8fd-56a0-4204-8ec7-b10e00b954c0>

Lot 355



### S/S RACK.

1 x S/s rack with 2-shelves. Excludes contents. Dimensions approx. 700 mm x 850 mm x 1.7 m high. Lift out: TBC

**CLICK LINK BELOW to view current price**

<https://www.bidspotter.co.uk/en-gb/auction-catalogues/food-machinery-2000/catalogue-id-fo10127/lot-ab0bc21e-a36d-4073-ac6b-b10e00b9c593>

Lot 356



### S/S MOBILE PRODUCT HOLDER.

1 x S/s mobile product/sauce holder. Lift out: TBC

**CLICK LINK BELOW to view current price**

<https://www.bidspotter.co.uk/en-gb/auction-catalogues/food-machinery-2000/catalogue-id-fo10127/lot-6aaa035d-716a-480f-934b-b10e00bd4a87>

Lot 357



### LFRA TEXTURE ANALYSER.

1 x LFRA texture analyser. Lift out: TBC

**CLICK LINK BELOW to view current price**

<https://www.bidspotter.co.uk/en-gb/auction-catalogues/food-machinery-2000/catalogue-id-fo10127/lot-11c6fb38-2b44-45ec-9e45-b10e00bde2b2>

Lot 358



### 2 X INCUBATORS.

2 x Incubators. Lift out: TBC

**CLICK LINK BELOW to view current price**

<https://www.bidspotter.co.uk/en-gb/auction-catalogues/food-machinery-2000/catalogue-id-fo10127/lot-8f23d24f-c49e-4c05-9225-b10e00be210b>

Lot 359



### IUL MASTICATOR PADDLE BLENDER.

1 x IUL Masticator paddle blender. Lift out: TBC

**CLICK LINK BELOW to view current price**

<https://www.bidspotter.co.uk/en-gb/auction-catalogues/food-machinery-2000/catalogue-id-fo10127/lot-854ee06f-9d72-46ca-aecb-b10e00beee5b>

Lot 360



### GRANT WATER BATH.

1 x Grant electrically heated water bath. Lift out: TBC

**CLICK LINK BELOW to view current price**

<https://www.bidspotter.co.uk/en-gb/auction-catalogues/food-machinery-2000/catalogue-id-fo10127/lot-447c54fe-3f80-4c3f-8728-b10e00be822d>

Lot 361



### DW SCIENTIFIC SPIRAL SYSTEM.

1 x DW Scientific spiral system. Lift out: TBC

**CLICK LINK BELOW to view current price**

<https://www.bidspotter.co.uk/en-gb/auction-catalogues/food-machinery-2000/catalogue-id-fo10127/lot-66c86a90-28b1-436a-bc76-b10e00bf5bd7>

Lot 362



### GRANT WATER BATH.

1 x Grant electric water bath. Lift out: TBC

**CLICK LINK BELOW to view current price**

<https://www.bidspotter.co.uk/en-gb/auction-catalogues/food-machinery-2000/catalogue-id-fo10127/lot-e1fc0261-3e1f-48d4-b030-b10e00bf9b96>

Lot 363



### QTY BRAND NEW TEST TUBES

1 x Box of brand new plastic test tubes. Lift out: TBC

**CLICK LINK BELOW to view current price**

<https://www.bidspotter.co.uk/en-gb/auction-catalogues/food-machinery-2000/catalogue-id-fo10127/lot-9a3e035f-f5c7-4d8c-a31e-b10e00c340c0>

Lot 364



### NIKON MICROSCOPE.

1 x Nikon Microscope. Lift out: TBC

**CLICK LINK BELOW to view current price**

<https://www.bidspotter.co.uk/en-gb/auction-catalogues/food-machinery-2000/catalogue-id-fo10127/lot-e53bd-b5a-faec-4d8e-b997-b10e00c04e2a>

Lot 365



### BROOKFIELD VISCOMETER.

1 x Brookfield programmable DV-II+ Viscometer. Lift out: TBC

**CLICK LINK BELOW to view current price**

<https://www.bidspotter.co.uk/en-gb/auction-catalogues/food-machinery-2000/catalogue-id-fo10127/lot-a82d-f28c-17dc-4715-93d2-b10e00c20e55>

Lot 366



### DW SCIENTIFIC SPIRAL PLATER.

1 x DW Scientific Spiral Plater (WASP) + Whitley 602 Vacuum source. Lift out: TBC

**CLICK LINK BELOW to view current price**

<https://www.bidspotter.co.uk/en-gb/auction-catalogues/food-machinery-2000/catalogue-id-fo10127/lot-07b23a57-15f1-460e-a5e1-b10e00c2ed72>

Lot 367



### STUART HOT STIRRER & CELL COUNTER.

1 x Stuart UC152 Hot Stirrer, max. capacity 15L, Ceramic Anderman Colonimeter Cell Colony Counter Lab. Lift out: TBC

**CLICK LINK BELOW to view current price**

<https://www.bidspotter.co.uk/en-gb/auction-catalogues/food-machinery-2000/catalogue-id-fo10127/lot-f13225f8-884d-4e84-9e7e-b10e00c3ecf0>

Lot 368



#### A&D VISCOMETER.

1 x AD SV-10 Vibro Viscometer. Lift out: TBC

**CLICK LINK BELOW to view current price**

<https://www.bidspotter.co.uk/en-gb/auction-catalogues/food-machinery-2000/catalogue-id-fo10127/lot-e20c94aa-f0f3-4def-af5c-b10e00c49405>

Lot 369



#### S/S TANK.

1 x S/s tank with variable speed mixing. Dims approx. 2.4 m diameter x overall height 2.4 m. Lift out: TBC

**CLICK LINK BELOW to view current price**

<https://www.bidspotter.co.uk/en-gb/auction-catalogues/food-machinery-2000/catalogue-id-fo10127/lot-d3cb1794-d9a3-4bfa-9a6b-b10e00c50d27>

Lot 370



#### S/S TANK.

1 x S/s tank with variable speed mixing. Dims approx. 2.4 m diameter x overall height 2.4 m. Lift out: TBC

**CLICK LINK BELOW to view current price**

<https://www.bidspotter.co.uk/en-gb/auction-catalogues/food-machinery-2000/catalogue-id-fo10127/lot-32491b54-d9fa-464a-b76c-b10e00c52429>

Lot 371



#### S/S TANK.

1 x S/s tank with variable speed mixing. Dims approx. 2.4 m diameter x overall height 2.4 m. Lift out: TBC

**CLICK LINK BELOW to view current price**

<https://www.bidspotter.co.uk/en-gb/auction-catalogues/food-machinery-2000/catalogue-id-fo10127/lot-735ea-6bc-cd7b-47e4-8714-b10e00c57b9e>

Lot 372



### S/S HOLDING VESSEL.

1 x S/s holding vessel without agitation. Dimensions of the tank approx. 2 m x 3 m x 1.5 m diameter. Lift out: TBC

**CLICK LINK BELOW to view current price**

<https://www.bidspotter.co.uk/en-gb/auction-catalogues/food-machinery-2000/catalogue-id-fo10127/lot-19e58a19-f233-4d50-8971-b10f00b62a03>

Lot 373



### RACKING & MOTORS.

1 x Racking including contents ie. motors and pumps. Lift out: TBC

**CLICK LINK BELOW to view current price**

<https://www.bidspotter.co.uk/en-gb/auction-catalogues/food-machinery-2000/catalogue-id-fo10127/lot-54d12ef9-8d79-4ba0-ac22-b10e00c604d0>

Lot 374



### BRAND NEW ALFA LAVAL HEAT EXCHANGER PLATES.

1 x Box of BRAND NEW Alfa Laval heat exchanger plates. Lift out: TBC

**CLICK LINK BELOW to view current price**

<https://www.bidspotter.co.uk/en-gb/auction-catalogues/food-machinery-2000/catalogue-id-fo10127/lot-fc443af7-7cf4-4269-a915-b10e00c75017>

Lot 375



### ELECTRICAL CABLES.

1 x Contents of room including rack with electrical cable. Lift out: TBC

**CLICK LINK BELOW to view current price**

<https://www.bidspotter.co.uk/en-gb/auction-catalogues/food-machinery-2000/catalogue-id-fo10127/lot-bfa4cf-de-517f-410b-aad1-b10e00c65fc6>

Lot 376



### RACK INCLUDING CONTENTS OF VARIOUS MOTORS AND

1 x Rack including contents of various motors and pumps. Lift out: TBC

**CLICK LINK BELOW to view current price**

<https://www.bidspotter.co.uk/en-gb/auction-catalogues/food-machinery-2000/catalogue-id-fo10127/lot-d04cc0c4-649f-48fd-b4fb-b10e00c7ce47>

Lot 377



### 2 X BRAND NEW MOTORS FOR SIRAL FREEZER.

2 x Brand new motors, still in crate, for spiral freezer. Lift out: TBC

**CLICK LINK BELOW to view current price**

<https://www.bidspotter.co.uk/en-gb/auction-catalogues/food-machinery-2000/catalogue-id-fo10127/lot-ea-ca04b9-ba58-4466-aa7b-b10e00c79c4e>

Lot 378



### METAL SMALL PARTS STORAGE UNITS + CHEST OF DRAWERS.

1 x Qty Metal small parts storage units plus chest of drawers. Includes contents ie. nuts, bolts etc. Lift out: TBC

**CLICK LINK BELOW to view current price**

<https://www.bidspotter.co.uk/en-gb/auction-catalogues/food-machinery-2000/catalogue-id-fo10127/lot-eee10550-81fb-4c86-9521-b10e00c91951>

Lot 379



### QTY SPARE PARTS CONTAINERS INCLUDING CONTENTS/BEAR-

1 x Qty various spare parts containers with all the bearings and the wall mounted holder. Lift out: TBC

**CLICK LINK BELOW to view current price**

<https://www.bidspotter.co.uk/en-gb/auction-catalogues/food-machinery-2000/catalogue-id-fo10127/lot-fe5f06c5-4486-47d3-a817-b10e00c9ec5f>

Lot 380



### DRIVE MOTOR BELTING ON WALL MOUNTED HOLDER.

1 x Qty drive motor belting with wall mounted holder/hooks. Lift out: TBC

**CLICK LINK BELOW to view current price**

<https://www.bidspotter.co.uk/en-gb/auction-catalogues/food-machinery-2000/catalogue-id-fo10127/lot-edaa89eb-09e1-4cc3-a491-b10e00ca3e15>

Lot 381



### 2 X CABINETS CONTAINING ELECTRICAL PARTS.

2 x Cabinets containing electrical parts. Lift out: TBC

**CLICK LINK BELOW to view current price**

<https://www.bidspotter.co.uk/en-gb/auction-catalogues/food-machinery-2000/catalogue-id-fo10127/lot-df5a1324-666e-4c83-9b2b-b10e00ca6e09>

Lot 382



### SMEDEGAARD WATER TREATMENT PLANT.

1 x Smedegaard water treatment plant with 3 Grundfos pumps and Hanovia UV system, blue tank. Lift out: TBC

**CLICK LINK BELOW to view current price**

<https://www.bidspotter.co.uk/en-gb/auction-catalogues/food-machinery-2000/catalogue-id-fo10127/lot-114824bb-cb3e-4039-aaed-b10e00cbe13c>

Lot 384



### S/S SILO.

1 x S/S silo on load cells. Was holding HPKO. Lift out: TBC

**CLICK LINK BELOW to view current price**

<https://www.bidspotter.co.uk/en-gb/auction-catalogues/food-machinery-2000/catalogue-id-fo10127/lot-fc6452b6-8831-4688-b988-b10e00e7a0de>



Lot 385



### S/S SILO.

1 x S/s silo holding liquid sugar. Lift out: TBC

**CLICK LINK BELOW to view current price**

<https://www.bidspotter.co.uk/en-gb/auction-catalogues/food-machinery-2000/catalogue-id-fo10127/lot-e75a04e5-fe31-4850-be7b-b10e00e7cbca>

Lot 386



### SILO.

1 x Sugar silo 40 tonne. Lift out: TBC

**CLICK LINK BELOW to view current price**

<https://www.bidspotter.co.uk/en-gb/auction-catalogues/food-machinery-2000/catalogue-id-fo10127/lot-21124eb1-6ec1-4a14-aab0-b10e00e88a88>

Lot 387



### PILLAR DRILL.

1 x Pillar drill approx. 600 mm x 1 m x 1.6 m. Lift out: TBC

**CLICK LINK BELOW to view current price**

<https://www.bidspotter.co.uk/en-gb/auction-catalogues/food-machinery-2000/catalogue-id-fo10127/lot-7d2d5938-1f17-4579-ba2f-b10e00cc2409>

Lot 388



### COLCHESTER LATHE.

1 x Colchester Mascot 1600 lathe. Dimensions approx. 1.3 m x 3 m x 1.5 m. Lift out: TBC

**CLICK LINK BELOW to view current price**

<https://www.bidspotter.co.uk/en-gb/auction-catalogues/food-machinery-2000/catalogue-id-fo10127/lot-5c03bed7-fe86-4b13-80ec-b10e00cc7b01>

Lot 389



### PILLAR DRILL.

1 x Pillar drill approx. 300 mm x 400 mm x 1.6 m high. Lift out: TBC

**CLICK LINK BELOW to view current price**

<https://www.bidspotter.co.uk/en-gb/auction-catalogues/food-machinery-2000/catalogue-id-fo10127/lot-1c89bbb2-432e-4ee2-a651-b10e00ccba37>

Lot 390



### COLCHESTER TRIUMPH LATHE.

1 x Colchester Triumph 2000 lathe. Dimensions approx. 1.8 m x 1 m x 1.3 m high. Lift out: TBC

**CLICK LINK BELOW to view current price**

<https://www.bidspotter.co.uk/en-gb/auction-catalogues/food-machinery-2000/catalogue-id-fo10127/lot-dec-c5a5e-c057-4409-b1f7-b10e00cd1ef3>

Lot 391



### GATE TURRET MILL.

1 x Gate turret mill. Dimensions approx. 1.5 m x 1.8 m x 2.1 m high. Lift out: TBC

**CLICK LINK BELOW to view current price**

<https://www.bidspotter.co.uk/en-gb/auction-catalogues/food-machinery-2000/catalogue-id-fo10127/lot-b8ca6d-de-e217-4542-b2ff-b10e00cd788a>

Lot 392



### SURFACE GRINDER.

1 x Surface grinder with a magnetic chuck . Lift out: TBC

**CLICK LINK BELOW to view current price**

<https://www.bidspotter.co.uk/en-gb/auction-catalogues/food-machinery-2000/catalogue-id-fo10127/lot-e5f1a08c-ce3e-44cc-971c-b10e00cf321f>

Lot 394



#### AIR TANKS.

2 x 2000 litre air tanks. Lift out:TBC

**CLICK LINK BELOW to view current price**

<https://www.bidspotter.co.uk/en-gb/auction-catalogues/food-machinery-2000/catalogue-id-fo10127/lot-d9258817-cffe-4090-8e2e-b10e00e928e0>

Lot 395



#### AIR FILTER.

1 x Owamat air filter. Lift out: TBC

**CLICK LINK BELOW to view current price**

<https://www.bidspotter.co.uk/en-gb/auction-catalogues/food-machinery-2000/catalogue-id-fo10127/lot-4910e757-e1af-429e-b98d-b10e00e96087>

Lot 396



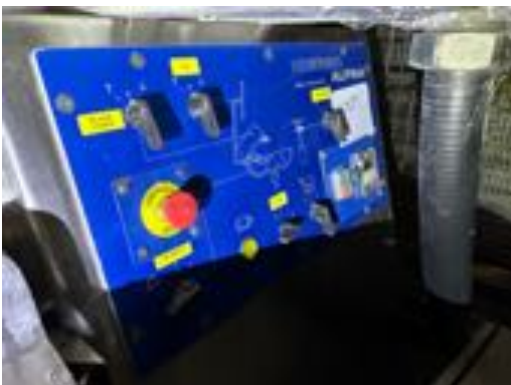
#### BRAND NEW 4-HEAD TURBO DEPOSITOR.

1 x Brand new Turbo D250P 4-head depositor. Mobile. With rise and fall head. Dimensions approx. 1.8 m x 1.3 m x 2 m high. This unit has never been put into production. Lift out: TBC

**CLICK LINK BELOW to view current price**

<https://www.bidspotter.co.uk/en-gb/auction-catalogues/food-machinery-2000/catalogue-id-fo10127/lot-6e63c9a7-ba3c-49cb-aa0e-b10e00e9f83d>

Lot 397



#### ALPINA ALL S/S 200 LITRE BOWL CUTTER.

1 x Alpina all s/s 200 litre bowl cutter with loader and unloader, 2 speed bowl, 3 speed knife/snail pace. With blade cover and noise cover. Dimensions approx. 1.3 m diameter bowl. Overall dimensions approx. 2.8 m long x 1.7 m high. Lift out: TBC

**CLICK LINK BELOW to view current price**

<https://www.bidspotter.co.uk/en-gb/auction-catalogues/food-machinery-2000/catalogue-id-fo10127/lot-55962442-e803-402e-91e3-b10e00eb3d98>

Lot 398



### 3 X SYSPAL S/S TOTE BINS.

3 x Sypsal s/s tote bins. Lift out: TBC

**CLICK LINK BELOW to view current price**

<https://www.bidspotter.co.uk/en-gb/auction-catalogues/food-machinery-2000/catalogue-id-fo10127/lot-ad-400ac4-cc7f-4e30-bed4-b10e00eb5e48>

Lot 399



### RUSSELL FINEX SIEVE.

1 x All s/s Russell Finex sieve. Mobile. Lift out: TBC

**CLICK LINK BELOW to view current price**

<https://www.bidspotter.co.uk/en-gb/auction-catalogues/food-machinery-2000/catalogue-id-fo10127/lot-ae1c2442-0a49-4202-afb4-b10e00ec9787>

Lot 400



### CHOCOLATE MELTING TANK.

1 x All s/s chocolate melting tank with agitation, with full process controls, bottom centre discharge, Consists of 2 x cylinder drums with mixer. Dimensions approx.800 mm x500 mm. Lift out: TBC

**CLICK LINK BELOW to view current price**

<https://www.bidspotter.co.uk/en-gb/auction-catalogues/food-machinery-2000/catalogue-id-fo10127/lot-5db87732-c2dd-4806-8570-b10e00ecc950>

Lot 401



### APV/COLLETTE DOUGH MIXER.

1 x APV/Collette mixer with bowl lift, bowls are lifted in up and locked into the mixer. there are 2 removable bowls, bowls are detachable with legs/mobile. This unit has recently come out of production. Bowl dimensions approx. 720 mm diameter x 600 mm high. Overall dimensions approx. 1.3 m x 1.2 m x 1.9 m high. Lift out: TBC

**CLICK LINK BELOW to view current price**

<https://www.bidspotter.co.uk/en-gb/auction-catalogues/food-machinery-2000/catalogue-id-fo10127/lot-c7a0cec8-d76e-4c16-a4d6-b10e00eeb114>

Lot 402



### APV/COLLETTE DOUGH MIXER

1 x APV/Collette mixer with bowl lift, bowls are lifted in up and locked into the mixer. there are 2 removable bowls, bowls are detachable with legs/mobile. This unit has recently come out of production. Bowl dimensions approx. 720 mm diameter x 600 mm high. Overall dimensions approx. 1.3 m x 1.2 m x 1.9 m high. Lift out: TBC

**CLICK LINK BELOW to view current price**

<https://www.bidspotter.co.uk/en-gb/auction-catalogues/food-machinery-2000/catalogue-id-fo10127/lot-0ae71bf7-1813-4cab-b4f3-b10e00ee5d77>

Lot 403



### SIAT CASE TAPER.

1 x Siat XL33/94.P top and bottom case taper, fully automatic. With conveyor. Dimensions approx. 2.3 m x 1.1 m x 1.7 m high. Lift out: TBC

**CLICK LINK BELOW to view current price**

<https://www.bidspotter.co.uk/en-gb/auction-catalogues/food-machinery-2000/catalogue-id-fo10127/lot-f505c4f4-78da-434d-a97c-b10e00ef7633>

Lot 404



### 5 X GREEN WHEELIE BINS.

5 x Green wheelie bins. Lift out: TBC

**CLICK LINK BELOW to view current price**

<https://www.bidspotter.co.uk/en-gb/auction-catalogues/food-machinery-2000/catalogue-id-fo10127/lot-199601b1-481d-40c8-b13e-b10e00f00cc0>

Lot 405



### 5 X GREEN WHEELIE BINS.

5 x Green wheelie bins. Lift out: TBC

**CLICK LINK BELOW to view current price**

<https://www.bidspotter.co.uk/en-gb/auction-catalogues/food-machinery-2000/catalogue-id-fo10127/lot-c1a246e0-b0e1-434c-9c94-b10e00f0353f>

Lot 406



4 x BLUE WHEELIE BINS.

4 x Blue wheelie bins. Lift out: TBC

**CLICK LINK BELOW to view current price**

<https://www.bidspotter.co.uk/en-gb/auction-catalogues/food-machinery-2000/catalogue-id-fo10127/lot-f31eb35d-50c6-4d87-b4b2-b10e00f0a8a7>

Lot 407



4 x BLUE WHEELIE BINS.

4 x Blue wheelie bins. Lift out: TBC

**CLICK LINK BELOW to view current price**

<https://www.bidspotter.co.uk/en-gb/auction-catalogues/food-machinery-2000/catalogue-id-fo10127/lot-b3776c96-e4b6-448f-93b9-b10e00f0da32>

Lot 408



PALLET OF APPROX. 70 BLUE TRAYS.

1 x Pallet of approx. 70 blue trays. Lift out: TBC

**CLICK LINK BELOW to view current price**

<https://www.bidspotter.co.uk/en-gb/auction-catalogues/food-machinery-2000/catalogue-id-fo10127/lot-9d158013-bd26-49f8-a575-b10e00f1e532>

Lot 409



PALLET OF APPROX. 70 BLUE TRAYS.

1 x Pallet of approx. 70 blue trays. Lift out: TBC

**CLICK LINK BELOW to view current price**

<https://www.bidspotter.co.uk/en-gb/auction-catalogues/food-machinery-2000/catalogue-id-fo10127/lot-9097d540-e47d-40dd-a709-b10e00f1ea6>

Lot 410



**PALLET OF APPROX. 70 BLUE TRAYS.**

1 x Pallet of approx. 70 blue trays. Lift out: TBC

**CLICK LINK BELOW to view current price**

<https://www.bidspotter.co.uk/en-gb/auction-catalogues/food-machinery-2000/catalogue-id-fo10127/lot-2a759d84-a47f-4e85-81bb-b10e00f21839>

Lot 411



**PALLET OF APPROX. 70 BLUE TRAYS.**

1 x Pallet of approx. 70 blue trays. Lift out: TBC

**CLICK LINK BELOW to view current price**

<https://www.bidspotter.co.uk/en-gb/auction-catalogues/food-machinery-2000/catalogue-id-fo10127/lot-0c941d03-fc14-4a6c-9339-b10e00f22ef1>

Lot 412



**4 X PALLETS CONTAINING A TOTAL OF 180 WIRE TRAYS.**

4 x Pallets of wire trays. 45 wire trays per pallet. Total 180 trays. Lift out: TBC

**CLICK LINK BELOW to view current price**

<https://www.bidspotter.co.uk/en-gb/auction-catalogues/food-machinery-2000/catalogue-id-fo10127/lot-5c7beb33-10c3-4b2e-9b28-b10e00facb35>

Lot 413



**4 X PALLETS CONTAINING A TOTAL OF 180 WIRE TRAYS.**

4 x Pallets of wire trays. 45 wire trays per pallet. Total 180 trays. Lift out: TBC

**CLICK LINK BELOW to view current price**

<https://www.bidspotter.co.uk/en-gb/auction-catalogues/food-machinery-2000/catalogue-id-fo10127/lot-d52b9414-1f41-424a-9655-b10e00faeb8c>

Lot 414



4 X PALLETS CONTAINING A TOTAL OF 180 WIRE TRAYS.

4 x Pallets of wire trays. 45 wire trays per pallet. Total 180 trays. Lift out: TBC

CLICK LINK BELOW to view current price

<https://www.bidspotter.co.uk/en-gb/auction-catalogues/food-machinery-2000/catalogue-id-fo10127/lot-6696d662-1f29-4b9d-b6f9-b10e00fb13cd>

Lot 500



LOTS 256 TO 270A OFFERED AS A COMBINATION - PASTEURI-

Lots 256 to 270A offered as a combination. Lift out: TBC PASTEURISATION PLANT.VIRTUALLY BRAND NEW, ONLY USED ONCE.

CLICK LINK BELOW to view current price

<https://www.bidspotter.co.uk/en-gb/auction-catalogues/food-machinery-2000/catalogue-id-fo10127/lot-2ab62b-be-55eb-453e-b372-b11100f08060>



# PRE AUCTION OFFERS CONSIDERED

Our online auctions are conducted in conjunction with Bidspotter. Using their bespoke online auction platforms. Bidders will be required to register with bidspotter prior to bidding.



## **IMPORTANT NOTE TO OVERSEAS BUYERS**

We can arrange your shipment and complete export documentation.

**BidSpotter**  
.co.uk

Please check the online catalogue for the most up to date information on individual lots.

**£££££ WE CAN DISPOSE OF YOUR SURPLUS FOOD MACHINERY**

**FOOD**  
MACHINERY 2000



**FOOD MACHINERY 2000 LTD**  
BUYERS | SELLERS | AUCTIONEERS

Serving the Food Industry for over



**FOOD MACHINERY 2000 LIMITED**  
Monkspool House | The Stable |  
Woolverton | BA2 7QT | UNITED KINGDOM  
TEL: + 44 UK (0)1373 831 373  
EMAIL: [sue@foodmachinery2000.com](mailto:sue@foodmachinery2000.com)  
WEBSITE: [www.foodmachinery2000.com](http://www.foodmachinery2000.com)