

2 DAY AUCTION OCT 15-16



Warehouse, Fulfillment, IT, and Facilities Maintenance Equipment From Global Shipping & Mailing Services Company

DRF Logistics | 117 Interstate Blvd, East Brunswick, NJ 08816

Oct 15 - 16

9:00 am ET
Timed Online Only

Warehouse/Fulfillment Equipment & Supplies

- (6) Sick ICD890 Parcel ID, Weigh, and Measurement Systems (New 2020) - w/ Wipotec-OCS Dual Deck Checkweighers, Illumination, Barcode Scanners, Laser Safety Scanners, Controls & Hytrol Conveyors
- (50+) VisAI Labs vMeasure Ultima Package Measurement Systems - (3) New in Box
- (55+) Honeywell Auto Cube 8200 Cameras w/ Stands - (16) New in Box
- (5) Stewart Glapat Adjustoveyor Telescopic Extendable Conveyors - 24" & 30" W x 25' to 80'L (New 2019 / 2020)
- (7) Best Flex 1.9 28" Wide Power Expandable Powered Live Roller Conveyors

Warehouse/Fulfillment Equipment & Supplies (cont.)

- Quantity of 30" W Idle Roller Conveyor - Uninstalled & Ready to Ship
- Quantity of Gravity Flow Wire Shelving - On Casters
- (4) Hydraulic Container Dumpers
- (33) Rice Lake DeckHand 1000 Portable Floor Scales, w/ 680 Synergy Plus DRO
- Large Quantity of Avery Weigh-Tronix Digital Benchtop Scales - Some New in Box
- (70) Wood Butcher Block Tables
- (80) Pallet Jacks - 5,500-Lb Capacity

Contact: Bob Saunders | 708-765-4026 | bob@integra-as.com

bidonintegra.com

Shipping Equipment & Supplies

- (30) Zebra ZT41142, ZD420 and GK420d Barcode / Label Printers – New in Box
- (80) Zebra ZQ630 Mobile Barcode Printers
- (30+) Bulk Lots of Assorted Zebra Printers & Accessories
- (2) Wulftec WSM1-150-S Smart Series Pallet Wrappers
- (50) Pallets of Collapsible, Reusable Bulk Plastic Containers, w/ Pallets & Lids – 48" x 40" x 45"
- Huge Quantity of 20-Bushel Poly, Vinyl & Canvas Bulk Box Trucks on Swivel Caster Bases
- Pallets of Miscellaneous Corrugated Boxes
- (50) Pallets of Assorted Thermal Labels
- Bulk Lot Quantities of Shipping Essentials, including Carton Sealing Tape, Shrink Wrap Film, Copy Paper – on Pallets
- Quantity of Assorted Printer Toner Cartridges

Computer & Electronics Equipment

- (500+) Honeywell Dolphin CT40 Handheld Computers – (72) New in Box w/Chargers
- (140+) Samsung SM-T540 Tablet PC's
- (80) Assorted LCD TV's – Most 65"
- (18) Newcastle Systems EC & NB Powered Ergonomic Mobile Workstations
- Aruba & Cisco Networking Devices – Most New in Box
- (6) BrightSign XT1144-T Ultra-Thin Video Players
- (70) New in Box Lenovo ThinkCentre T1022 Monitors – Gen 3 / 4 / 5
- (60) New in Box Dell Monitors – to 27"
- (20+) Bulk Lots of Assorted Monitors
- (2) HP LaserJet Pro 500 Color MFP M570dn All-in-One Color Printers
- (2) HP Color LaserJet Enterprise MFP M480 All-in-One Color Printers

Computer & Electronics Equipment (cont.)

- (14) HP LaserJet Pro M404dw Printers – New in Box
- (16) Bulk Lots of Assorted Printers
- (2) APC NetShelter SX 42U 750mm Server Racks – New, Never Used
- Quantity of Walkie Talkies & Chargers

Maintenance & Plant Services

- (2) Astrophysics XIS-100XDV Dual-View Baggage & Parcel X-Ray Inspection System (New 2022)
- (3) Atlas Copco GA37VSDs 50-HP Air Compressors (New 2022)
- (2) Ingersoll Rand RS15NE 20-HP Air Compressors
- (17) Portacool and Polarcool 48", 36" & 32" Evaporative Coolers
- (23) Big Ass and Rite Height Ceiling Mounted Fans – 8' to 12' Diameter
- (200+) Assorted Shop Fans – Dock, Pedestal & Barrel
- Safety Guards, Barriers, Signage & Equipment
- Rolling Stairs & Ladders
- Spare Machine & General Use Parts – Motors, Drives, Gear Boxes, Conveyor Rolls & Belts, Electrical Controls & Components
- Contents of Maintenance Department - Hand & Power Tools, Tool Chests, Double End Grinders, Shop Vacs, Vises, Work Benches, Toolboxes, Storage Cabinets, Lift Carts, Air Compressor, Hardware, Parts Bins, etc.
- Pallets of 50-Lb Bags & 40-Lb Pails of Ice Melt
- Quantity of Janitorial Supplies & Waste Receptacles
- (110) Hollowell 3-Tier Lockers – 12" x 18" x 78"
- Refrigerators, Freezer, Microwaves
- Shop & Offices Shop Desks, Stools, Chairs, Tables, Picnic Tables, etc. Add event to calendar

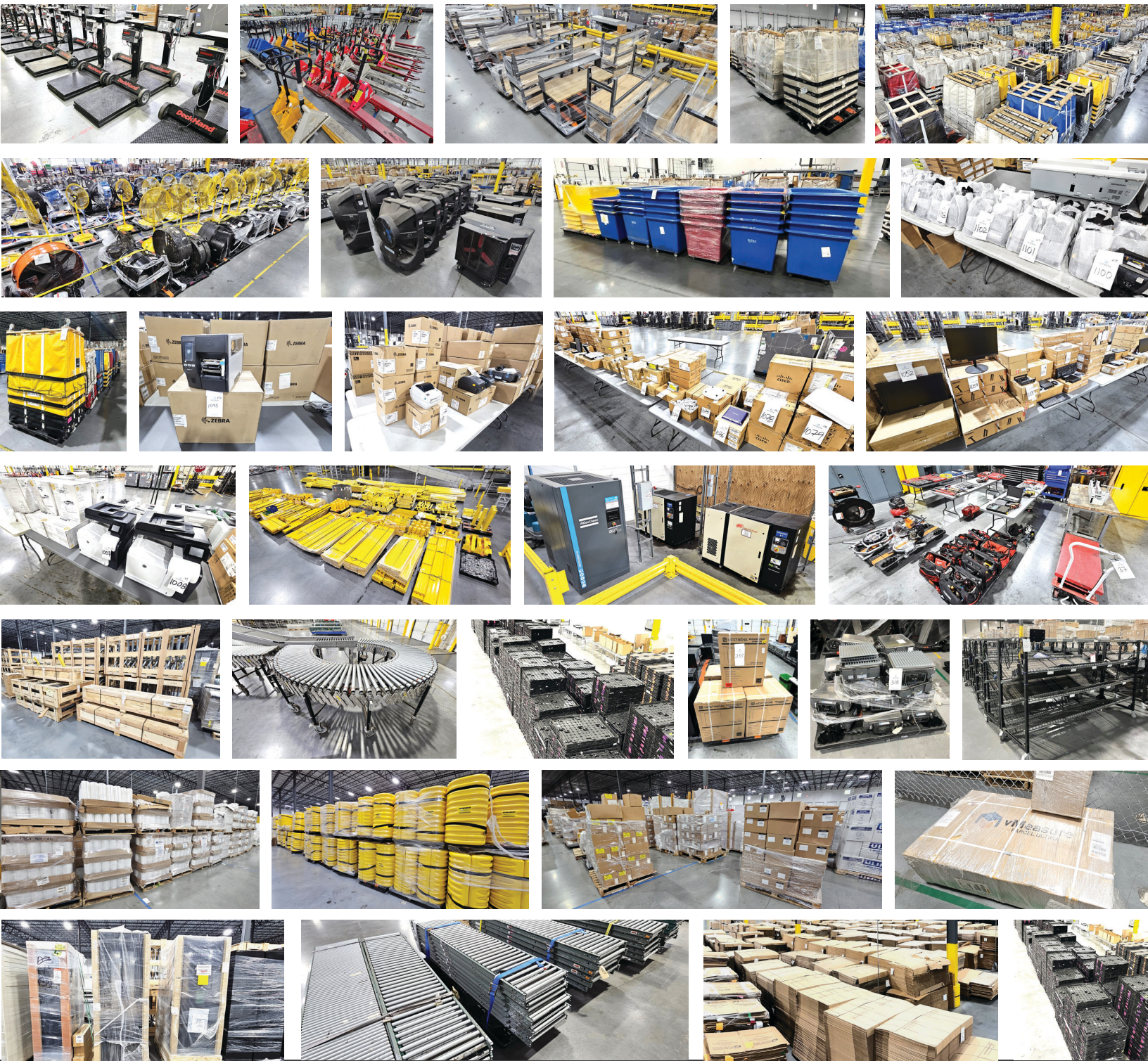


Inspection: Mon & Tue, October 14 & 15, 2024, from 8:00 AM – 4:00 PM (ET), or earlier by appointment.

Removal Dates: August 23 - September 13, 2024 | Monday - Friday | 8:00 AM - 4:00 PM ET

ALL ITEMS MUST BE REMOVED BY OCTOBER 31, 2024 - NO EXCEPTIONS.

ANY ITEMS REMAINING AFTER THIS DATE WILL BE CONSIDERED ABANDONED.



Removal Dates: August 23 - September 13, 2024 | Monday - Friday | 8:00 AM - 4:00 PM ET

ANY ITEMS REMAINING AFTER THIS DATE WILL BE CONSIDERED ABANDONED.

bidonintegra.com