

Fine Jewellery & Watches, 13th Jun, 2024 11:00

1



A VARI-GEM GIARDINETTO SUITE OF JEWELLERY BY ALABASTER & WILSON. Comprising a brooch and pair of earrings, set with circular and pear shape tourmaline, amethyst, zircon, garnet, citrine, etc, maker's marks for Alabaster & Wilson, stamped 9ct, length of brooch 4.1cm, length of earrings 3cm, gross weight 23.1g. **£500-800**

2



AN 18CT GOLD DIAMOND HORSE BROOCH. Of bi-colour design, with single cut diamond mane and tail, sponsor's mark RHB, import marks for Birmingham, 1967, length 3.2cm, gross weight 5g. **£200-400**

3



AN EARLY 20TH CENTURY SAPPHIRE AND SEED PEARL BAR BROOCH. The circular shape sapphire and split pearl wreath with polished bar sides, stamped 15ct, length 6.5cm, gross weight 7.1g. **£150-250**

4



A VARI GEM GIARDINETTO BROOCH, ATTRIBUTED TO CROPP & FARR. Of typical design, set with vari shape amethysts, garnet, peridot, topaz, etc, length 4.3cm, gross weight 10.2g. **£120-220**

5



A CORAL BROOCH. Of foliate design, with three spherical coral berries and textured leaf surround, length 5cm, gross weight 7.4g. **£200-400**

6



A DAVID ANDERSEN ENAMEL BROOCH. Of foliate design with white enamel detailing, maker's marks for David Andersen, stamped 925S, length 6.7cm, gross weight 8.5g. **£60-80**

7



Fine Jewellery & Watches, 13th Jun, 2024 11:00

A LARGE VICTORIAN PIETRA DURA BROOCH. The oval pietra dura panel depicting a floral bouquet, within a carved jet surround, length 7.3cm. **£70-90**



A 19TH CENTURY MICRO MOSAIC AND GOLDSTONE BROOCH. The micro mosaic panel depicting a dove in flight within a blue sky surround, inset to the goldstone and onyx oval panel and ropework border, length 4.5cm, gross weight 14.9g. **£300-500**



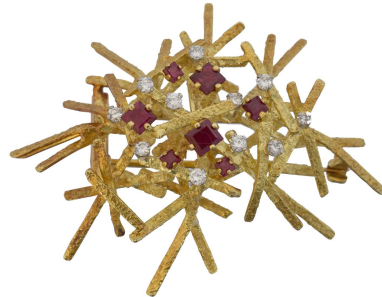
AN EARLY 20TH CENTURY AMETHYST AND SPLIT PEARL BROOCH. The cushion shape amethyst within a split pearl surround, to the similarly set bar sides, stamped 15ct, length 4.5cm, gross weight 5.7g. **£220-420**



A CHINESE INLAID TORTOISESHELL BROOCH. The oval tortoiseshell panel with inlaid yellow metal and mother of pearl motif depicting trees, temple, reeds, and rabbit, length 6.9cm, gross weight 19.5g. **£80-120**



11



A 1970S RUBY AND DIAMOND BROOCH BY GEORGE WEIL. Designed as a square shape ruby and brilliant cut diamond cluster, claw-set within a textured bar setting, signed, stamped 18ct & Plat, length 6cm, gross weight 20.7g. **£2,000-4,000**

12



A VICTORIAN GOLD, DIAMOND AND SPLIT PEARL BROOCH. The old and rose cut diamond cluster within a split pearl star surround, atop the engraved oval setting, with vacant glazed panel to reverse, principal diamond estimated 0.35ct, length 4.4cm, gross weight 11.5g. **£450-650**

13



A 1970S SET OF 18CT GOLD JEWELLERY BY JOHN DONALD. Comprising a brooch and ring, each designed as a cluster of vari size brilliant cut diamonds, claw and prong set within a textured gold surround, maker's marks for John Donald, hallmarks for 1970 and 1972, length of brooch 4.8cm, ring size M, gross weight 37.9g. **£3,000-5,000**

Fine Jewellery & Watches, 13th Jun, 2024 11:00

14



A LATE 19TH CENTURY SHELL CAMEO BROOCH. The oval shell cameo depicting a classical figure, possibly Bacchus, within a scalloped surround, stamped 15ct, length 6.5cm, gross weight 28.3g. **£300-500**

17



A 19TH CENTURY LAVA CAMEO BROOCH. The oval shape lava cameo depicting a profile of a classical figure, possibly Menelaus, within an Etruscan surround detailed with acorns and wirework. *Cameo loose from setting.* Length 4.7cm, gross weight 17g. **£200-400**

15



A 19TH CENTURY CARVED CORAL BROOCH. The coral carving depicting a classical deity with grapes, ram and shield motifs, length 4.5cm. **£200-400**

18



A WEDGWOOD JASPERWARE ANTI SLAVE TRADE MEDALLION. 'Am I not a man and a brother?' signed Wedgwood and numbered 62 TC to reverse, with a horn brooch setting, length of medallion 3.3cm, length of brooch 6cm. **£50-100**

16



A SHELL CAMEO BROOCH BY GIOVANNI APA. The circular shell cameo depicting 'Hours of the Day' after Raphael Sanzio d'Urbino, signed, stamped 585 and NA95, may also be worn as a pendant, length 4.8cm, gross weight 9.5g. **£200-400**

19



A VICTORIAN CITRINE BROOCH. The circular shape citrine within an Etruscan style surround, length 3.7cm, gross weight 14.7g. **£200-400**

Fine Jewellery & Watches, 13th Jun, 2024 11:00

20



A VICTORIAN MOURNING BROOCH. The rectangular hairwork panel within an enamel and foliate surround, with hoop surmount, length 3.8cm, gross weight 17g. **£120-220**

21



A VICTORIAN CITRINE BROOCH. The circular shape citrine within a beaded surround, length 3.2cm, gross weight 12.1g. **£150-250**

22



A VICTORIAN MOURNING BROOCH. The oval hairwork panel within an enamel scrolling surround, length 4.4cm, gross weight 16.7g. **£200-400**

23



A 19TH CENTURY FOIL BACK GARNET CROSS BROOCH. The cushion shape foil back garnet cross with hoop surmount and later brooch fitting, length 3.7cm, gross weight 4.1g. **£80-120**

24



A VICTORIAN SPLIT PEARL, DIAMOND AND ENAMEL MOURNING BROOCH. Designed as a bouquet of split pearl and rose cut diamond forget-me-nots, within a black enamel scrolling surround, to the vacant glazed panel reverse, with hoop surmount, length 5.4cm, AF, gross weight 30.1g. **£400-600**

25



A MID 19TH CENTURY PASTE 'ST ESPIRIT' BROOCH. Of typical form, set with rose cut colourless gems, together with a paste stickpin, lengths 5.8 and 6.9cm (2). **£80-120**

26



A VICTORIAN GARNET, SPLIT PEARL AND DIAMOND BROOCH. The split pearl and rose cut diamond star inset to the oval garnet cabochon, with polished and rope twist surround, vacant glazed panel to reverse, length 3.3cm, gross weight 11.6g. **£450-650**

Fine Jewellery & Watches, 13th Jun, 2024 11:00

27



A VICTORIAN GARNET SUITE OF JEWELLERY. Comprising a brooch and pair of drop earrings, designed with an oval garnet cabochon and an Etruscan surround, length of brooch 4.3cm, length of earrings 2.5cm, earrings with later fittings, gross weight 14.1g. **£200-400**

28



TWO EARLY 20TH CENTURY 15CT GOLD OPAL BAR BROOCHES. The first set with an oval opal cabochon and single cut diamond sides, the second designed as an oval opal cabochon within a foliate surround, lengths 4.5 to 5.5cm, gross weight 5.9g. **£150-250**

29



TWO 19TH CENTURY BROOCHES. The first designed with a swivel oval hairwork and locket panel, stamped 9ct, the second with a vacant glazed reverse, lengths 3.5cm, gross weight 15.3g. **£100-200**

30



FOUR VICTORIAN AND LATER BROOCHES. To include a sunstone micro mosaic brooch, a turquoise bar brooch, an amethyst and split pearl brooch, and one other, two stamped 9ct, lengths 2.4 to 4.5cm, gross weight 27.5g. **£120-220**

31



A SELECTION OF VICTORIAN BROOCHES. To include five pique brooches of circular and oval form, together with one other inlaid brooch, lengths 3.3 to 3.8cm (6). **£100-200**

32



A 9CT GOLD ROCK CRYSTAL STICKPIN. The carved rock crystal flower with a cultured pearl centre, sponsor's mark JWG, hallmarks for Birmingham, 1967, length 7.8cm, gross weight 6.1g. **£50-100**

Fine Jewellery & Watches, 13th Jun, 2024 11:00

33



AN ENAMEL BRACELET BY IVAR T HOLTH. The rectangular enamel panels with vari-shade floral detailing and plain link spacers, maker's marks for Ivar T Holth, stamped 830S Norway, length 18.5cm, gross weight 19.1g. **£80-120**

34



A RUBY AND DIAMOND BRACELET. Designed as a marquise shape ruby with single cut diamond tiered cluster, with textured link sides and push piece clasp, stamped 585, length 19cm, gross weight 28.8g. **£1,200-1,500**

35



AN 18CT GOLD BRACELET BY UNOAERRE. The oval turquoise cabochon with fancy link textured sides, maker's marks for UnoAerre, Italian assay marks, length 20.4cm, gross weight 33.3g. **£700-900**

36



A FINE VICTORIAN GRAND TOUR MICRO MOSAIC BRACELET. Comprising seven micro mosaic panels depicting birds and a chariot, birds perched, birds and butterflies, with rectangular locket spacers and a push piece clasp, the reverse engraved with initials and open back settings for the principal mosaics, length 17cm, AF, gross weight 32.6g. **£800-1,200**

37



A VICTORIAN MOURNING HAIRWORK BRACELET AND LOCKET. The woven hairwork tapered bracelet terminating with a padlock locket clasp, opening to reveal an oval vacant hairwork panel, reverse engraved 'Henry Stanley born Oct 28 1833 died May 29 1840' inner diameter 4.9cm, gross weight 3.8g. **£300-500**

38



A 9CT GOLD SNAKE BRACELET BY CROPP & FARR. Of typical form, with red gem eyes and hooked clasp, maker's marks C&F, hallmarks for Chester, 1959, inner diameter 5.5cm, gross weight 30.1g. **£650-850**

Fine Jewellery & Watches, 13th Jun, 2024 11:00

39



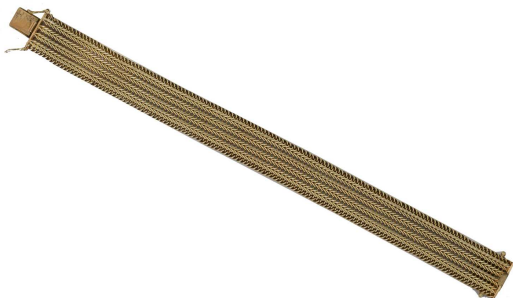
A 9CT GOLD CHAIN BRACELET. The flat curb link chain with engraved and polished links, terminating with a heart shape padlock clasp, hallmarks for Birmingham, length 19cm, gross weight 19.4g. **£250-450**

40



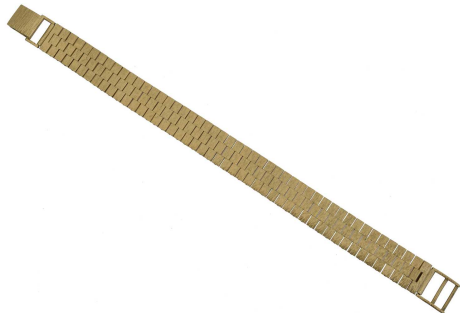
A 9CT GOLD BRACELET. The flat curb link chain with push piece clasp, hallmarks for Birmingham, length 21cm, gross weight 72.6g. **£1,200-2,200**

41

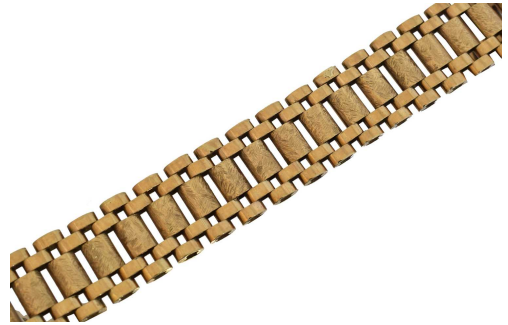


A 9CT GOLD BRACELET. Of woven design, with push piece clasp, import marks for London, length 18.7cm, gross weight 20.5g. **£250-450**

42



43



A 9CT GOLD BRACELET BY SMITH & PEPPER. The fancy textured brick link chain with a push piece clasp, maker's marks for Smith & Pepper, hallmarks for Birmingham, 1975, length 18.5cm, gross weight 27.8g. **£300-500**

44



A CHAIN BRACELET. The polished half links with partially concealed push piece clasp, stamped 750, maker's marks ZCI, length 20cm, gross weight 13.5g. **£400-600**

45



A TURQUOISE PANEL BRACELET. Comprising eight textured panels with turquoise cabochon grape detailing and post clasp, stamped 750, length 17cm, gross weight 29.7g. **£900-1,400**

Fine Jewellery & Watches, 13th Jun, 2024 11:00

46



A CHARM BRACELET. The 9ct gold trace link chain with heart shape padlock clasp bearing hallmarks for Birmingham, 1899, suspending fifteen charms to include:

- An eagle charm with red gem eyes
- A 19th century opal and blue enamel shield shape locket, vacant reverse
- A continental circular charm containing a figural model
- A wirework oil lamp charm stamped K18
- A bear charm with red gem eyes, holding a baton with seed pearl terminals
- A French 18ct gold 19th century enamel and seed pearl watch key
- A continental lilac glass and base metal grapes charm
- An eagle's claw charm holding a shakudo sphere
- A 'forget me not' hinged book charm dated 1858
- A goat and cart charm
- A George II half guinea dated 1809
- A French painted china heart pendant, with Frederic the Great logo and text
- A carved coral Figa charm
- A rifleman charm
- A 19th century floral bloodstone seal

Together with a loose 19th century turquoise and diamond jewellery component, length of bracelet 16cm, gross weight 62.9g. **£1,200-2,200**

47



A JADE BANGLE. Inner diameter 6.8cm, gross weight 81.5g. **£50-70**

48



A CHANEL BRACELET. Comprising five circular links with maker's monogram, signed, gold plated, length 20.4cm. **£400-600**

49



AN INDIAN ENAMEL HINGED BANGLE. The red, green and cream enamel pattern atop the hinged bangle with screw fitting, stamped 22, inner diameter 6.2cm, gross weight 35.6g. **£2,000-3,000**

50



A PAIR OF DIAMOND HOOP EARRINGS. Each designed as a polished hoop with single cut diamond clusters, estimated total diamond weight 0.50ct, stamped 750, length 2cm, gross weight 15.6g. **£600-800**

Fine Jewellery & Watches, 13th Jun, 2024 11:00

51



A PAIR OF MOTHER OF PEARL, TURQUOISE AND ENAMEL EARRINGS. Converted from buttons, stamped 9ct, length 2.1cm, gross weight 3.6g. **£60-120**

52



A PAIR OF 22CT GOLD RUBY EARRINGS. Each designed as a circular ruby cabochon within a beaded and filigree surround, import marks for Sheffield, 1997, length 2.1cm, gross weight 9.7g. **£800-1,200**

53



A PAIR OF CLIP EARRINGS. Each designed as a polished dome with grooved surround, stamped 750, length 2.3cm, gross weight 14.1g. **£400-600**

54



A PAIR OF EMERALD AND DIAMOND

EARRINGS. Each designed as an emerald cut emerald weighing approx. 1.10cts and 1.35cts respectively within a brilliant cut diamond surround and surmount, estimated total diamond weight 1.65cts, butterflies stamped 18, length 2.5cm, gross weight 9.1g. **£3,000-5,000**

55



A PAIR OF AMETHYST AND CULTURED

PEARL EARRINGS. Each designed as an oval shape amethyst and cultured pearl drop, length 2.6cm, gross weight 2.6g. **£50-100**

56



A PAIR OF 18CT GOLD CITRINE AND ENAMEL LEO DE VROOMEN EARRINGS.

Each designed as a cushion citrine cabochon within an enamel surround, signed de Vroomen, length 3cm, gross weight 31.1g. With maker's box and Boodles pouch. **£1,000-1,500**

57



A PAIR OF EMERALD, DIAMOND AND

CULTURED PEARL DROP EARRINGS. Each designed as an oval shape emerald and brilliant cut diamond cluster suspended from a cultured pearl drop, length 3cm, gross weight 3.9g. **£150-200**

Fine Jewellery & Watches, 13th Jun, 2024 11:00

58



A GEM-SET SPUTNIK PENDANT. Of typical form, set with tourmaline, garnet, amethyst, citrine, etc, stamped 750, length 2.7cm, gross weight 3.5g. **£120-220**

59



A 'THE BEATLES' BEETLE PENDANT. White metal, opening to reveal the band, unmarked, length 2.5cm. **£40-60**

60



A VICTORIAN OPAL AND DIAMOND PENDANT. The oval opal cabochon with old cut diamond and similar shape opal tiered surround, suspended from a detachable opal surmount, AF, length 3.7cm, together with a separate bar brooch attachment, stamped 9ct, gross weight 6.8g. **£200-400**

61



A VICTORIAN ONYX AND SPLIT PEARL MEMORIAL LOCKET. The oval onyx locket set with split pearls in a foliate design, with glazed panel reverse and split pearl and enamel tapered surmount, length 5.4cm, gross weight 14.4g. With Hall & Co., Manchester fitted case and later cord. **£100-200**

62



AN INTAGLIO LOCKET. The oval shape locket containing an oval agate painted intaglio measuring 38 x 21 x 3mm, possibly depicting Aphrodite with putti, length 4.8cm, gross weight 11.9g. **£150-250**

63



A VICTORIAN DIAMOND AND ENAMEL LOCKET. The old and rose cut diamond star within a blue enamel border and beaded surround, with vacant reverse, length 4.7cm, gross weight 13.6g. **£500-700**

Fine Jewellery & Watches, 13th Jun, 2024 11:00

64



A VICTORIAN PIETRA DURA LOCKET. The oval pietra dura panel depicting a floral bouquet, with polished surround and hinged vacant glazed panel reverse, length 4.6cm, gross weight 10.3g. **£200-400**

65



AN 18CT GOLD EMERALD PENDANT. The circular shape emerald within a rubover setting and tapered surmount, suspended from a flat curb link chain, hallmarks to pendant worn, chain with French assay marks, length of pendant 1.4cm, length of chain 41cm, gross weight 9.1g. **£250-450**

66



AN AMETHYST AND DIAMOND PENDANT. The pear shape amethyst weighing approx. 22cts with single cut diamond accents, suspended from an unmarked trace link chain, length of pendant 3cm, length of chain 68cm, gross weight 10.8g. **£150-250**

67



AN EMERALD AND DIAMOND PENDANT. The octagonal cut emerald weighing approx. 2.55cts with a princess cut diamond trefoil surmount, marks for Colombian Emeralds International, stamped 18kt, suspended from a fancy link chain, length of pendant 1.7cm, length of chain 44cm, gross weight 8.1g. With maker's box. **£1,500-2,500**

68



A 9CT GOLD AMETRINE PENDANT. The emerald cut ametrine weighing approx. 3.80cts within a four claw setting, suspended from a faceted trace link chain, hallmarks for London and Birmingham, length of pendant 2.1cm, length of chain 44cm, gross weight 9.1g. **£150-250**

69



A LAPIS LAZULI AND SPLIT PEARL LOCKET. The heart shape lapis lazuli cabochon within a rubover setting, suspended from a split pearl bow and tapered surmount, to the vacant glazed panel reverse, suspended from a later 9ct gold trace link chain, length of locket 4.5cm, length of chain 70cm, gross weight 30.4g. **£450-650**

Fine Jewellery & Watches, 13th Jun, 2024 11:00

70



A DIAMOND NECKLACE. The brilliant cut diamond weighing approx. 0.50ct with fancy link chain sides, estimated colour K-L, estimated clarity SI2-P1, stamped 9ct, length 42cm, gross weight 11.6g. **£200-400**

73



A 1970S AZURITE GEODE PENDANT. The azurite geode within a claw setting, suspended from a belcher link chain, length of pendant 5.6cm, length of chain 48cm, gross weight 26.5g. **£200-400**

71



AN EARLY 20TH CENTURY AMETHYST NEGLIGEE NECKLACE. The pear shape amethyst duo suspended from a circular shape sapphire surmount, and trace link chain sides, stamped 9ct, length 40.4cm, gross weight 2.8g. With GJ Tennant, New Bedford St, Luton case. **£50-100**

74



A 1970S MODERNIST NECKLACE BY JENS ANDERSEN AND ERIK DUNNING 'AD DESIGN.' Of openwork design with a bar surmount, suspended from a trace link chain, signed AD Design, marked 'Made in Denmark,' silver plated, length of pendant 6.2cm, length of chain 72cm. **£50-100**

72



AN EARLY 20TH CENTURY PERIDOT AND SPLIT PEARL PENDANT. With circular shape peridot drops and seed pearl foliate accents, stamped 9ct, suspended from a later 9ct gold flat curb link chain bearing import marks for London, length of pendant 5.2cm, length of chain 44cm, gross weight 7.7g. **£80-120**

75



A 1970S 9CT GOLD AMETHYST PENDANT. The triangular shape amethyst geode within a caged setting and rope twist surround, sponsor's marks LW, hallmarks for London, 1974, length 57cm, weight 44.4g. **£80-120**

Fine Jewellery & Watches, 13th Jun, 2024 11:00

76



A MID 19TH CENTURY PASTE 'ST ESPIRIT' PENDANT. Of typical design, with dove and foliate motif, may also be worn as a brooch, suspended from a trace link chain, length of pendant 7.3cm, length of chain 50cm, gross weight 20.2g. **£200-400**

77



AN ART NOUVEAU CARVED HORN NECKLACE, ATTRIBUTED TO ELIZABETH BONTÉ. The carved and dyed horn panel depicting a fuchsia within a triangular openwork surround, suspending a green glass drop, with similar glass, and carved horn cord sides, length of drop 11.4cm, unsigned. *See Beatriz Chadour-Sampson & Sonya Newell-Smith, Tadema Gallery London Jewellery from the 1860s to 1960s, Arnoldsche Art Publishers, Stuttgart 2021, cat. no. 145. £600-800*

78



AN ART NOUVEAU HORN HAIR COMB, ATTRIBUTED TO ELIZABETH BONTÉ. Carved with two bees, unsigned, length 11.7cm. **£100-200**

79



A 9CT GOLD CHAIN NECKLACE. The flat curb link chain with spring clasp, import marks for Sheffield, length 43cm, gross weight 17g. **£200-400**

80



A 9CT GOLD CHAIN NECKLACE. The rope twist chain with spring clasp, import marks for Sheffield, length 132cm, gross weight 23.7g. **£400-600**

81



A 9CT GOLD ALBERT CHAIN. The graduated flat curb link chain with spring clasps, length 40cm, gross weight 47.2g. **£550-750**

82



Fine Jewellery & Watches, 13th Jun, 2024 11:00

A 9CT GOLD SNAKE NECKLACE BY CROPP & FARR. Of typical form, with red gem eyes and push piece clasp, maker's marks C&F, hallmarks for Birmingham, 1960, length 37cm, gross weight 30.1g. **£650-850**

86



83



AN 18CT GOLD DIAMOND FRINGE NECKLACE BY WELLENDORFF. Retailed by Boodles, designed as 32 brilliant cut diamonds, claw set to the fancy fringe necklace, with maker's fancy link chain sides and push piece clasp, estimated total diamond weight 1.20cts, maker's diamond-set 'W' signed Boodles, length 39cm, gross weight 72.4g. **£3,800-4,800**

AN 18CT GOLD CULTURED PEARL NECKLACE.

Comprising ten strands of cultured freshwater pearls, terminating with an 18ct gold bow clasp, sponsor's marks WS, import marks for Birmingham, 1991, length 41cm. Retailed by Boodles, with box. **£350-550**

87



84



A STRAND OF 19TH CENTURY WEDGWOOD JASPERWARE BEADS. Comprising 19 pink and blue Wedgwood Jasperware beads, with grey bead spacers and push piece clasp, length 47cm. **£70-90**

AN 18CT GOLD DIAMOND CULTURED PEARL NECKLACE.

The uniform cultured pearl strand terminating with an 18ct gold diamond spherical clasp, import marks for Sheffield, length 46cm. **£120-220**

88



85



A 9CT GOLD GARNET CULTURED PEARL NECKLACE. The graduated strand of cultured pearls terminating with a 9ct gold garnet push piece clasp, hallmarks for Dublin, length 48cm. **£80-120**

TWO ROCK CRYSTAL BEAD NECKLACES.

Each designed as a graduated line of faceted rock crystal beads, one with push piece clasp, lengths 78cm, gross weight 192.5g. **£150-250**

Fine Jewellery & Watches, 13th Jun, 2024 11:00

89



A CHERRY BAKELITE NECKLACE. The graduated oval cherry bakelite beads with a screw clasp, largest bead 22 x 29mm, gross weight 47.8g. **£50-100**

90



A CORAL NECKLACE. The carved coral drop suspended from a graduated strand of coral beads, length 66cm, gross weight 89.7g. **£60-120**

91



A CORAL NECKLACE. Comprising five strands of coral beads terminating with an Etruscan scarab push piece clasp, length 41.5cm. **£200-400**

92



A VICTORIAN WHITE METAL COLLAR NECKLACE. Of bi-colour design, with square shape foliate panels and fancy engraved spacers, length 51cm, gross weight 47.2g. **£80-120**

93



A GEORGIAN COIN COLLAR NECKLACE. Constructed from George IV shillings and sixpences dated between 1826 and 1829, with a hook clasp, length 51cm, gross weight 187.8g. **£80-120**

94



A VICTORIAN WHITE METAL COLLAR NECKLACE. The engraved convex rectangular links with oval link spacers and beaded accents, length 46.5cm, gross weight 75.5g. **£80-120**

95



A 19TH CENTURY SILVER IHS PILL BOX. Gilt interior, may be worn as a pendant/locket, maker's marks indiscernable, length 7cm, gross weight 43.1g. **£50-100**

Fine Jewellery & Watches, 13th Jun, 2024 11:00

96



A VICTORIAN HAIRWORK ALBERTINA CHAIN. The plaited hairwork chain with turquoise cabochon spacers and replacement toggle clasp, length 33cm, gross weight 4.8g. **£80-120**

97



A LATE VICTORIAN JET NECKLACE. Suspending three tapered jet drops detailed with hand painted oval shape panels depicting putti with butterflies and doves, length 50cm. **£150-250**

98



A VICTORIAN GILT METAL SUNSTONE ALBERTINA CHAIN. Of tapered design, the fancy link chain with sunstone panels, suspending a similarly set swivel fob, length 27cm. **£150-250**

99



THREE GEM-SET FOBS. To include a 9ct gold claw fob, a banded agate and aventurine quartz dove spinner fob stamped 375, and an amethyst fob stamped 9ct, lengths 3.2 to 3.8cm, gross weight 22.3g. **£100-200**

100



A DIAMOND CLUSTER RING. Of tiered design, the brilliant cut diamond within a similarly cut diamond double surround, estimated total diamond weight 1.60cts, principal diamond approx. 0.35cts, estimated I-J colour, SI clarity, stamped 18ct, ring size M, gross weight 6.2g. **£400-600**

101



A RUBY AND DIAMOND CLUSTER RING. The circular shape ruby and single cut diamond tiered cluster with polished shoulders, stamped 18ct, ring size L, gross weight 4.7g. **£120-220**

Fine Jewellery & Watches, 13th Jun, 2024 11:00

102



A DIAMOND SINGLE STONE RING. The brilliant cut diamond weighing approx. 2.15cts within a twelve claw setting, estimated colour I-J, estimated clarity SI2-P1, stamped Plat, ring size M1/2, gross weight 3.8g. **£3,500-4,500**

105



AN 18CT GOLD DIAMOND SINGLE STONE RING. The brilliant cut diamond weighing approx. 1.15cts within an eight claw setting, estimated colour M-N, estimated clarity P2, hallmarks for Birmingham, ring size X, gross weight 10.2g. **£600-800**

103



A LATE VICTORIAN 18CT GOLD RUBY AND DIAMOND FIVE STONE RING. The cushion shape ruby and old cut diamond line inset to the polished band, hallmarks for Birmingham, date letter worn, ring size P, gross weight 3g. **£150-250**

106



A RUBY AND DIAMOND COCKTAIL RING, A ruby and diamond cocktail ring, the brilliant cut diamond and square cut ruby band with tapered shoulders, estimated total diamond weight 1.60ct, stamped 750, ring size K, gross weight 14g. **£300-500**

104



A DIAMOND THREE STONE RING. The brilliant cut diamond line within shared claw settings, estimated total diamond weight 0.45ct, stamped 18ct & Plat, ring size R1/2, gross weight 3.3g. **£200-400**

107



A SAPPHIRE AND DIAMOND CLUSTER RING. The oval shape pink sapphire weighing approx. 1.10cts within a brilliant cut diamond scalloped surround, estimated total diamond weight 1.50cts, ring size O1/2, gross weight 6g. **£2,200-3,200**

Fine Jewellery & Watches, 13th Jun, 2024 11:00

108



AN EARLY 20TH CENTURY PEARL AND DIAMOND CLUSTER RING. The slightly off-round pearl within a rose cut diamond scalloped surround, stamped 18ct & Plat, maker's marks L.E B&B, ring size N, gross weight 3.4g. *Pearl untested.* **£150-250**

111



A CORAL DRESS RING BY GEORG JENSEN, NO. 46B. Designed by Harald Nielsen for Georg Jensen, the oval coral cabochon within a grooved surround, maker's marks for Georg Jensen, stamped 46B and Sterling Denmark, ring size P, gross weight 6.1g. **£150-250**

109



A SAPPHIRE AND DIAMOND DRESS RING. The oval shape pink sapphire weighing approx. 1ct within a brilliant and baguette cut diamond openwork surround, estimated total diamond weight 0.35ct, stamped Plat, ring size O1/2, gross weight 4.2g. **£800-1,200**

112



AN 18CT GOLD DIAMOND SINGLE STONE RING, An 18ct gold diamond single stone ring, the brilliant cut diamond weighing 1.77ct within an eight claw setting, hallmarks partially indistinct, ring size E1/2, gross weight 4.5g. Accompanied with an AGI report no. 935117 dated 2013 stating that the diamond is natural fancy brown colour, SI2 clarity. **£1,000-1,500**

110



AN 18CT GOLD TOURMALINE SINGLE STONE RING. The oval shape pink tourmaline weighing approx. 2.40cts within a ten claw setting, hallmarks for Birmingham, ring size V, gross weight 10.5g. **£350-550**

113



A 1970S 18CT GOLD DRESS RING. Of textured design, with tapered shoulders, import marks for Birmingham, sponsor's marks RHB, ring size N1/2, gross weight 7.2g. **£200-400**

Fine Jewellery & Watches, 13th Jun, 2024 11:00

114



A CITRINE AND DIAMOND DRESS RING BY CHIMENTO. The emerald cut citrine with brilliant cut diamond sides, signed Chimento, stamped 18ct, ring size O, gross weight 5.9g. **£200-300**

117



AN 18CT GOLD SIGNET RING, An 18ct gold signet ring, hallmarks for Chester, 1948, ring size U1/2, gross weight 8.6g. **£150-250**

115



A 9CT GOLD BAND RING. Of Celtic design, Robert G Lawrie Ltd., Edinburgh, 2005, ring size Y, gross weight 7.5g. **£120-220**

118



AN OPAL SINGLE STONE RING. The oval opal cabochon within a rubover setting, marks worn, ring size I1/2, gross weight 4.9g. **£150-250**

116



A SAPPHIRE AND DIAMOND CLUSTER RING. The oval shape yellow sapphire weighing approx. 0.90ct within a brilliant cut diamond surround, estimated total diamond weight 0.35ct, stamped Plat, ring size M1/2, gross weight 4.9g. **£700-900**

119



AN 18CT GOLD SAPPHIRE AND DIAMOND THREE STONE RING. The emerald cut yellow sapphire weighing approx. 1.30cts with brilliant cut diamond sides, estimated total diamond weight 0.30ct, hallmarks for Birmingham, 1965, ring size M, gross weight 3.6g. **£400-600**

120



Fine Jewellery & Watches, 13th Jun, 2024 11:00

A DIAMOND CLUSTER RING. Of geometric design, the brilliant cut diamond within a baguette and brilliant cut diamond surround, estimated total diamond weight 0.45ct, stamped Plat, ring size O, gross weight 3.5g. **£700-900**

124



121



A DRESS RING. The Victorian quarter sovereign within a faceted surround and tapered shoulders, stamped 18K, ring size T, gross weight 15.2g. **£300-500**

AN EARLY VICTORIAN 18CT GOLD MOURNING RING, An early Victorian 18ct gold mourning ring, the square onyx panel within a black enamel surround, and 'In Memory Of' text to band and shoulders, with text 'Sophia Lowe, Died 26 Feb'y, 1853 aged 66' to reverse, hallmarks indistinct, maker's marks JG, ring size L, gross weight 3.1g. **£100-200**

125



122

A DIAMOND FIVE STONE RING. The old cut diamond line with tapered shoulders, estimated total diamond weight 0.55ct, stamped 18ct, ring size S1/2, gross weight 5.2g. **£400-600**

A DIAMOND SINGLE STONE RING, A diamond single stone ring, the old cut diamond weighing approx. 0.70ct, claw-set within a tapered band, estimated colour I-J, estimated clarity P2, stamped 18ct, ring size Z, gross weight 5.5g. **£300-400**

123



126



A BAROQUE PEARL DRESS RING. The silvery-grey baroque pearl within a pierced setting, stamped K18, ring size L1/2, gross weight 5g. **£200-400**

A PERIDOT AND DIAMOND THREE STONE RING. The emerald cut peridot weighing approx. 1.50cts with brilliant cut diamond sides, estimated total diamond weight 0.40ct, estimated colour J-K, estimated clarity SI, stamped Plat, ring size M1/2, gross weight 4.4g. **£700-900**

Fine Jewellery & Watches, 13th Jun, 2024 11:00

127



A 19TH CENTURY EMERALD AND DIAMOND CLUSTER RING. The cushion shape emerald within a vari-shape emerald and rose cut diamond scalloped surround, to the foliate shoulders and grooved band, ring size L1/2, gross weight 5.4g. **£500-800**

130



AN 18CT GOLD DIAMOND SINGLE STONE RING. The brilliant cut diamond weighing 0.30ct (stamped to band) estimated colour K-L, estimated clarity SI, with textured shoulders, PLTD, Birmingham, 1975, ring size J, gross weight 4.1g. **£200-400**

128



A PLATINUM DIAMOND DRESS RING. The radiant cut diamond weighing approx. 0.70ct, estimated colour H-I, estimated clarity VS, with emerald cut diamond sides and brilliant cut diamond shoulders, estimated total diamond weight 1.15cts, stamped Plat, maker's marks IF, ring size P1/2, gross weight 5.2g. **£900-1,400**

131



AN EARLY 20TH CENTURY EMERALD AND DIAMOND CLUSTER RING. The octagonal cut emerald weighing approx. 3.90cts within an old cut diamond surround and similarly cut diamond shoulders, estimated total diamond weight 2cts, ring size L, gross weight 6g. *Verbal report obtained from GCS on 22.5.24, stating that the emerald is Colombian, with indications of minor clarity enhancement.* **£3,000-5,000**

129



AN EMERALD AND DIAMOND CLUSTER RING. The principal emerald weighing 3.90cts within a brilliant cut diamond surround, estimated total diamond weight 0.70ct, ring size P, gross weight 14.1g. *Accompanied by an IGI certificate no. 586358824 dated 6th July 2023 stating that the emerald is Zambian with moderate clarity enhancement.* **£3,000-5,000**

132



A 1960S DIAMOND DRESS RING. Designed as a series of vari cut diamonds atop the textured, openwork band, stamped 18ct, ring size R, gross weight 6.8g. **£300-500**

Fine Jewellery & Watches, 13th Jun, 2024 11:00

133



AN EMERALD AND DIAMOND CLUSTER RING. The rectangular shape emerald within a brilliant cut diamond tiered surround, estimated total diamond weight 1.30cts, ring size K1/2, gross weight 6.6g. **£400-600**

134



A 19TH CENTURY GEM-SET CLUSTER RING. The replacement octagonal shape green paste within a split pearl surround and tapered shoulders, ring size N1/2, gross weight 5.3g. **£100-200**

135



A DIAMOND SINGLE STONE RING. The old cut diamond weighing approx. 2.05cts within a six claw setting, estimated colour K-L, estimated clarity P2, stamped 18ct & Plat, ring size P, gross weight 3.1g. **£3,000-4,000**

136



A SUITE OF EMERALD AND DIAMOND JEWELLERY. Comprising a ring and pair of earrings, designed as an oval shape emerald within a tapered baguette cut 'ballerina' surround, stamped 750, ring size N1/2, length of earrings 2cm, gross weight 15.4g. **£1,200-2,200**

137



AN AQUAMARINE AND DIAMOND THREE STONE RING. The emerald cut aquamarine weighing approx. 2cts with brilliant cut diamond sides, estimated total diamond weight 0.30ct, stamped 18ct, ring size T, gross weight 3.8g. **£200-400**

138



A DIAMOND CLUSTER RING. Of floral design, the brilliant cut diamond within a similarly cut diamond scalloped surround, estimated total diamond weight 0.90ct, stamped Plat, ring size N1/2, gross weight 4.4g. **£950-1,250**

Fine Jewellery & Watches, 13th Jun, 2024 11:00

139



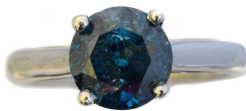
AN AQUAMARINE AND DIAMOND DRESS RING. Of openwork design, the rectangular shape aquamarine weighing approx. 1.70cts with brilliant cut diamond line sides, estimated total diamond weight 1.10cts, ring size R1/2, gross weight 10.5g. **£250-450**

142



A TANZANITE AND DIAMOND CLUSTER RING. The emerald cut tanzanite weighing approx. 2.50cts within a brilliant cut diamond scalloped surround, estimated total diamond weight 1.20cts, ring size P, gross weight 6.2g. **£2,000-3,000**

140



A COLOUR-TREATED 'BLUE' DIAMOND SINGLE STONE RING. The brilliant cut HPHT 'blue' diamond weighing approx. 1.50cts within a four claw setting, stamped 14K, ring size K1/2, gross weight 4.4g. **£80-120**

143



A PLATINUM DIAMOND HALO CLUSTER RING. The oval cut diamond weighing 0.92ct within a brilliant cut diamond surround and similarly cut diamond shoulders, estimated total diamond weight 1.25cts, signed Marlow and sponsor's marks for JE Marlow and Sons, hallmarks for Birmingham, ring size K, gross weight 4.7g. *Accompanied by a copy of GIA report 3285628437 dated 2018, stating that the diamond is D colour, SI1 clarity, no fluorescence.* **£450-650**

141



AN EARLY 20TH CENTURY SAPPHIRE AND DIAMOND DRESS RING. The square shape sapphire and rose cut diamond cluster with tapered shoulders, stamped 18ct & Plat, ring size K1/2, gross weight 2.7g. **£120-220**

144



A PLATINUM DIAMOND BAND RING. Comprising two lines of brilliant cut diamonds, estimated total diamond weight 1.05cts, signed Marlow and sponsor's marks for JE Marlow and Sons, hallmarks for Birmingham, ring size J1/2, gross weight 6.7g. **£220-420**

Fine Jewellery & Watches, 13th Jun, 2024 11:00

145



A SAPPHIRE AND DIAMOND CLUSTER RING. The oval shape sapphire trio within a brilliant cut diamond surround, estimated total diamond weight 0.25ct, ring size Q, gross weight 5.8g. **£220-420**

148



A DIAMOND SINGLE STONE RING. The brilliant cut diamond weighing approx. 1.65cts with baguette cut diamond shoulders, estimated colour J-K, estimated clarity SI, estimated total diamond weight 1.90cts, ring size M1/2, gross weight 4.2g. **£2,200-4,200**

146



AN 18CT GOLD DIAMOND THREE STONE RING. The brilliant cut diamond weighing approx. 0.90ct with pear cut diamond shoulders, estimated total diamond weight 1.35cts, principal diamond estimated I-J colour, P2 clarity, hallmarks for London, ring size O, gross weight 3.9g. **£450-650**

149



A 9CT GOLD IOLITE SINGLE STONE RING. The oval shape iolite weighing approx. 4.70cts within a four claw setting, hallmarks for Birmingham, ring size P1/2, gross weight 4.3g. **£80-120**

147



AN 18CT GOLD SAPPHIRE AND DIAMOND FIVE STONE RING. The circular shape sapphire and brilliant cut diamond line with scrolling shoulders, estimated total diamond weight 0.40ct, hallmarks for London, ring size N, gross weight 5.3g. **£300-500**

150



AN 18CT GOLD DIAMOND SEVEN STONE RING. The brilliant cut diamond line within shared claw settings, estimated total diamond weight 1.40cts, estimated colour H-I, estimated clarity SI-P1, hallmarks for London, ring size R, gross weight 5.7g. **£500-700**

Fine Jewellery & Watches, 13th Jun, 2024 11:00

151



A 9CT GOLD AMETRINE SINGLE STONE RING. The emerald cut ametrine weighing approx. 5.85cts within a four claw setting, hallmarks for Birmingham, ring size P1/2, gross weight 5.4g. **£80-120**

154



A DIAMOND BAND RING. Comprising seven brilliant cut diamonds, estimated total diamond weight 0.35ct, stamped 18ct, ring size M, gross weight 3.2g. **£120-220**

152



A DIAMOND CLUSTER RING. The brilliant cut diamond within a similarly cut diamond scalloped surround and sides, estimated total diamond weight 0.70ct, stamped 18ct, ring size N, gross weight 2.6g. **£900-1,400**

155



A SMOKY QUARTZ SINGLE STONE RING. The fancy marquise shape smoky quartz within a four claw setting, stamped 18K, ring size P, gross weight 7g. **£150-250**

153



A 9CT GOLD AMETHYST DRESS RING. The oval shape amethyst weighing approx. 3cts within a ten-claw setting, hallmarks for Birmingham, ring size U1/2, gross weight 5.9g. **£70-90**

156



TWO 18CT GOLD DIAMOND DRESS RINGS. To include a diamond cluster ring and a diamond three stone ring, estimated total diamond weight 0.30ct, ring sizes M1/2 and N1/2, gross weight 6.4g. **£200-400**

157



Fine Jewellery & Watches, 13th Jun, 2024 11:00

TWO EARLY 20TH CENTURY DIAMOND

DRESS RINGS. To include a floral cluster ring stamped 18ct & Plat, together with an 18ct gold diamond five stone ring, hallmarks for Chester, 1908, ring sizes O1/2 and L1/2, gross weight 4.8g. **£200-400**

158



THREE 18CT GOLD GEM SET DRESS RINGS.

To include a diamond single stone ring, a sapphire and diamond half eternity ring, and a diamond five stone ring, ring sizes K1/2 to M1/2, gross weight 6.9g. **£200-400**

159



FOUR 18CT GOLD DIAMOND DRESS RINGS.

To include a diamond single stone ring, a diamond five stone ring, and two diamond three stone rings, one hallmarked, three stamped 18ct & Plat, ring sizes L to P1/2, gross weight 9.5g. **£450-650**

160



FOUR 18CT GOLD DIAMOND DRESS RINGS.

To include a diamond band ring, two diamond three stone rings and a diamond cluster ring, estimated total diamond weight, one hallmarked, ring sizes N1/2 to P1/2, gross weight 9.3g. **£450-650**

161



FOUR 18CT GOLD DIAMOND DRESS RINGS.

To include two diamond cluster rings, a diamond five stone ring and a diamond single stone ring, two hallmarked, estimated total diamond weight 0.65ct, ring sizes N1/2 to S1/2, gross weight 11.4g. **£550-750**

162



FIVE GEM-SET DRESS RINGS. To include a diamond cluster ring stamped 18ct, a 9ct gold emerald cluster ring, a 9ct gold ruby and diamond ring, a 9ct gold sapphire and diamond cluster ring, and a 9ct gold cultured pearl single stone ring, ring sizes P1/2 to T1/2, gross weight 11.5g. **£200-400**

163



FIVE 9CT GOLD DIAMOND DRESS RINGS. To include two three stone rings and two cluster rings, estimated total diamond weight 0.80ct, ring sizes K to V1/2, gross weight 11.2g (5). **£250-450**

Fine Jewellery & Watches, 13th Jun, 2024 11:00

164



SIX 9CT GOLD GEM-SET DRESS RINGS. To include a diamond single stone ring, an amethyst five stone ring, and four garnet rings, ring sizes N to S, gross weight 23.9g. **£550-850**

165



A SELECTION OF GEM-SET JEWELLERY. To include a 9ct gold 0.15ct diamond single stone ring, a 9ct gold opal single stone ring, a 9ct gold synthetic sapphire single stone ring, a chrysoprase ring stamped 9ct, a 9ct gold onyx signet ring, a 9ct gold smoky quartz single stone ring, and a bar brooch stamped 9ct, ring sizes L to X1/2, gross weight 24.6g. **£550-850**

166



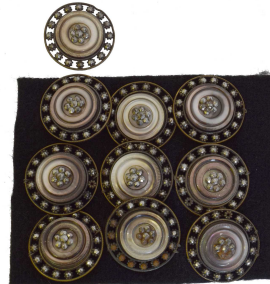
A PAIR OF EMERALD AND DIAMOND CUFFLINKS. Set with oval shape emeralds and rose cut diamonds, within a bi-colour surround, length 1.4cm, gross weight 5.7g. **£750-950**

167



A SET OF 19TH CENTURY OPAL GLASS AND CUT STEEL BUTTONS. Within a fitted case (6). **£60-80**

168



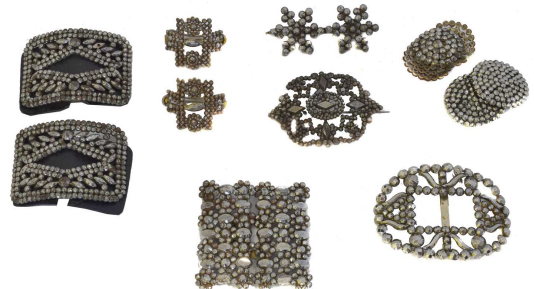
A SET OF TEN 19TH CENTURY MOTHER OF PEARL AND CUT STEEL BUTTONS. Of openwork design, length 2.7cm (10). **£70-90**

169



A SELECTION OF 19TH CENTURY JET. To include two cuff bangles, a buckle, a pair of earrings and a scarf ring (5). **£70-90**

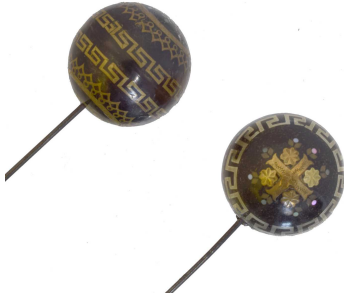
170



Fine Jewellery & Watches, 13th Jun, 2024 11:00

A SELECTION OF 19TH CENTURY CUT STEEL ITEMS. To include three pairs of buckles, one buckle, two brooches, and five buttons. **£50-100**

171



TWO 19TH CENTURY TORTOISESHELL INLAID HAT PINS. Each with a spherical tortoiseshell terminal, inlaid with gilt metal and mother of pearl (2). **£50-100**

172



A LATE VICTORIAN LAVA CAMEO GILT COMB AND SET OF HAIR PINS. The comb set with an oval lava cameo depicting a lady in profile, atop a gilt metal and cut steel openwork surround, together with four gilt metal hairpins, within a fitted case. **£100-200**

173



A VICTORIAN JET HAIR COMB. Designed as a carved jet tiara, with cut steel and green paste floral cluster terminals, 13.5 x 4.8cm. **£100-200**

174



A 19TH CENTURY GILT HAIR ORNAMENT. Designed as a filigree tiara with classical busts atop a fancy wirework surround, dimensions 16.2 x 12.4 x 7.8cm. **£200-400**

175



A SELECTION OF FAUX TORTOISESHELL AND BAKELITE HAIR COMBS. In varying designs, lengths 13 to 16cm (10). **£100-200**

176



A SELECTION OF VICTORIAN AND LATER HAIR COMBS. To include jet, cut steel, horn, paste, and pique examples (5). **£200-400**

177



Fine Jewellery & Watches, 13th Jun, 2024 11:00

AN EARLY 20TH CENTURY LARGE FAUX TORTOISESHELL HAIR COMB. With pierced scrolling design, dimensions 29.5 x 28cm, with black Maltese lace shawl. **£70-90**

178



A GEORG JENSEN SPACE KEYRING. Silver plated, signed, length 6.3cm. With maker's box. **£40-60**

179



A 1960S 9CT GOLD LADIES BLANCPAIN WRISTWATCH. The signed circular dial with Arabic markers, signed Blancpain Raville SA 17 jewel manual wind movement within a 9ct gold case bearing hallmarks for Birmingham, 1961, numbered 80712 and 124616, to the brick link bracelet with folding clasp, case diameter 20mm, length 17cm, gross weight 17.6g. **£200-400**

180



AN 18CT GOLD LADIES MANUAL WIND BUCHERER WRISTWATCH. The signed circular dial with baton markers, cal, 2412 ETA 17 jewel manual wind movement within an 18ct gold case bearing Swiss assay marks, to the fancy textured and tapered bracelet with folding clasp, case diameter 17mm, length 16.2cm, gross weight 24.9g. **£400-600**

181



A 9CT GOLD BUECHE GIROD QUARTZ WRISTWATCH. The signed and grooved gold tone dial with tapered hands, signed 6 jewel quartz movement within a 9ct gold case bearing hallmarks for London, 1979, with maker's black leather strap, case diameter 23mm. **£80-120**

182



A 1960S 9CT GOLD BUECHE GIROD MANUAL WIND WRISTWATCH. The signed square shape dial with baton markers, FHF cal. 59-21 signed 17 jewel manual wind movement within a 9ct gold case bearing sponsor's marks for Roy King, hallmarks for London, 1969, to the textured bracelet with sliding clasp, case diameter 11mm, length 17.5cm, gross weight 26.8g. With maker's box. **£350-550**

183



Fine Jewellery & Watches, 13th Jun, 2024 11:00

A 1950S 9CT GOLD BULOVA MANUAL WIND WRISTWATCH. The black circular dial with Arabic markers and outer minutes track, signed 10AK 16 jewel movement within a 9ct gold cushion shape case bearing hallmarks for London, 1956, case diameter 27mm, with unassociated black canvas strap. **£120-220**

186



A 1970S INGERSOLL CHRONOGRAPH MANUAL WIND WRISTWATCH, A 1970s Ingersoll chronograph manual wind wristwatch, the signed reverse panda dial with subsidiary dials to 3 and 6, tachymetre scale and luminous markers, pushers to 2 and 4, cal. 7733 17 jewel manual wind Valjoux movement within a stainless steel case, to the later hinged bracelet, case diameter 37mm. **£80-120**

187



A JAEGER-LECOULTRE REVERSO DUETTO WRISTWATCH, REF. 266.544. The signed rectangular silvered dial with Arabic hour markers and inner chapter ring, flipping to reveal a mother of pearl signed dial with diamond partial bezel, cal 844 mechanical movement within an 18ct gold, diamond and stainless steel case numbered 1967797, case width 20mm, to the fancy link bi-colour bracelet with maker's folding clasp. With box, papers and spare links. **£3,000-5,000**

188



A MID 20TH CENTURY DOXA AUTOMATIC WRISTWATCH, REF. 11855 7. The signed circular dial with baton markers, outer minutes track and date aperture to 3, automatic movement within a gold plated and stainless steel case numbered 6519494, case diameter 34mm, with unassociated expandable bracelet. **£50-100**

184



AN ART DECO DIAMOND MANUAL WIND COCKTAIL WATCH BY CROTON. The signed square shape dial with arabic markers and outer minutes track, signed cal. A3A 17 jewel manual wind movement numbered 743 within an unmarked white metal case set with approx. 0.80ct single and baguette cut diamonds, to the cord sides and folding clasp, case diameter 14mm, gross weight 17.9g. **£200-400**

185



Fine Jewellery & Watches, 13th Jun, 2024 11:00

A WWII LONGINES AIR MINISTRY PILOT'S MANUAL WIND MILITARY WRISTWATCH.

Circa 1943, the signed dial with arabic markers, outer minutes track and blued steel hands, cal. 12.68 N 16 jewel manual wind movement signed and numbered 6567578 within a stainless steel and chrome plated snap-back case numbered 22 5, 22429, 1022, and marked 'AM 6B/159 5094/43' to case back, case diameter 32mm.

Vendor's father served in the Royal Air Force in WW2 and returned his government issued watch at the end of the war. Shortly thereafter, he was offered the opportunity to purchase this Longines 6B/159 issue watch. The piece has remained in the same family ever since. £500-800

189



AN 18CT GOLD LONGINES CONQUEST AUTOMATIC WRISTWATCH.

The signed circular dial with baton markers, date aperture to 12 and outer minutes track, signed automatic movement within an 18ct gold case, to the bracelet and folding clasp, case diameter 34mm, length 20.7cm, gross weight 85.3g. With maker's box. **£2,000-4,000**

190



A STAINLESS STEEL LONGINES CONQUEST QUARTZ WRISTWATCH, REF. L1.614.4.

The signed circular white dial with baton markers, outer minutes track and date aperture to 3, signed 6 jewel ETA cal 255441 movement within a stainless steel case numbered 4020 161 and 26375241, to the polished bracelet and double folding clasp, case diameter 33mm. **£100-200**

191



A STAINLESS STEEL LONGINES 'DOLCEVITA' QUARTZ WRISTWATCH, REF. L5.686.4.

The signed square silver dial with arabic and baton markers and date aperture to 4, quartz movement within a stainless steel case, with polished bracelet and double folding clasp, case diameter 28mm. **£80-120**

192



A LONGINES 'FLAGSHIP' AUTOMATIC WRISTWATCH, REF. L4.774.3.

The signed circular white dial with baton markers, outer minutes track and date aperture to 3, exhibition back revealing the signed and numbered rotor L619.2, and ETA cal. 2892A2 21 jewel automatic movement, case numbered 35772119, to the stainless steel bi-colour bracelet and deployment clasp, case diameter 35mm. **£150-250**

193



Fine Jewellery & Watches, 13th Jun, 2024 11:00

A LONGINES PRESENCE QUARTZ

WRISTWATCH. The signed dial with roman numeral markers and inner chapter ring, signed L 153.4 quartz movement within a gold plated and stainless steel case, numbered 6798 2 153, 21899201, with black leather strap and unassociated buckle, case diameter 24mm. **£50-80**

196



194



A 9CT GOLD MAPPIN & WEBB QUARTZ

WRISTWATCH. The signed gold tone dial with baton markers, outer minutes track and date aperture to 3, quartz movement within a 9ct gold case bearing import marks for Sheffield, 1986, with later crocodile leather strap, case diameter 33mm. in fitted, monogrammed case and with original paperwork. **£120-220**

A 1930S 9CT GOLD OMEGA MANUAL WIND

WRISTWATCH. The signed circular dial with arabic and baton hour markers, outer minutes track and subsidiary seconds dial to 6, signed 15 jewel manual wind movement numbered 8368815 within a 9ct gold case bearing hallmarks for Birmingham, 1936, numbered 606336, with later unassociated brown leather strap and buckle, case diameter 31mm. With Omega case. **£150-250**

197



195



A 1970S 9CT GOLD MARVIN MANUAL WIND

WRISTWATCH. The signed gold tone dial with dot markers, signed cal 320A 17 jewel manual wind movement within a 9ct gold case bearing hallmarks for London, 1972, numbered 02130, to the textured brick link bracelet and folding clasp, case diameter 24mm, gross weight 33.1g. **£400-600**

AN OMEGA CHRONOMETER CONSTELLATION AUTOMATIC

WRISTWATCH. The signed circular dial with baton markers, outer minutes track and date aperture to 3, signed automatic movement within a gold plated and stainless steel case, with maker's bracelet and folding clasp, case diameter 35mm. With maker's travel case. **£400-600**

198



Fine Jewellery & Watches, 13th Jun, 2024 11:00

A 1950S 9CT GOLD OMEGA MANUAL WIND WRISTWATCH. The signed circular dial with arabic and baton markers, outer minutes track and subsidiary dial to 6, cal. 265 signed 15 jewel manual wind movement numbered 11705784 within a 9ct gold case bearing hallmarks for Birmingham, 1950, numbered 13322, 312479, case diameter 33mm, with later maker's black leather strap and buckle. With maker's box. **£200-400**

201



199



A 1950S STAINLESS STEEL OMEGA SEAMASTER AUTOMATIC WRISTWATCH, REF. 2849-1SC. The signed circular dial with gold tone baton markers, outer minutes track and date aperture to 3, signed cal. 503 20 jewel automatic movement numbered 16967605 within a stainless steel case, to the maker's bracelet and folding clasp, case diameter 34mm. **£400-600**

202



200



A 1950S OMEGA SEAMASTER AUTOMATIC WRISTWATCH, A 1950s Omega Seamaster automatic wristwatch, ref. 2849, the signed dial with baton markers, tapered hands and date aperture to 3, signed cal. 503 20 jewel automatic movement numbered 16528184 within a gold plated and stainless steel case numbered 315164, with later expandable bracelet, case diameter 34mm. **£250-450**

203



AN 18CT GOLD OMEGA DE VILLE MANUAL WIND WRISTWATCH, REF. 711.8340. The signed gold tone oval shape dial with black enamel hands, signed cal. 625 17 jewel movement numbered 39 917761 within an 18ct gold case bearing Swiss assay marks, numbered 511 8340 347, to the tapered bracelet with folding clasp, numbered 711 8340, case diameter 25mm, length 16.9cm, gross weight 37.4g. With maker's box. **£1,500-2,500**

A 1960S 9CT GOLD OMEGA SEAMASTER AUTOMATIC WRISTWATCH, REF. 147361. The signed textured gold tone dial with baton markers and tapered hands, signed cal. 552 24 jewel movement numbered 17996284 within a 9ct gold case bearing hallmarks for Birmingham, 1961, numbered 991, with unassociated later lizard leather strap, case diameter 34mm. **£300-500**

Fine Jewellery & Watches, 13th Jun, 2024 11:00

A STAINLESS STEEL OMEGA SEAMASTER DE VILLE MANUAL WIND WRISTWATCH. The signed circular dial with baton markers and outer minutes track, signed manual wind movement within a stainless steel case, with unassociated leather strap and clasp, case diameter 32mm. With maker's box. **£250-450**

204



A STAINLESS STEEL OMEGA DE VILLE CO AXIAL CHRONOMETER AUTOMATIC WRISTWATCH, The signed circular dial with roman numeral markers and date aperture to 3, automatic movement with co-axial escapement within a stainless steel case numbered 85852896, to the maker's bracelet with folding clasp, case diameter 36mm. **£700-900**

205



A 1960S 9CT GOLD OMEGA GENEVE MANUAL WIND WRISTWATCH, REF. 130.25016. The signed circular dial with baton markers and outer minutes track, signed cal. 601 17 jewel manual wind movement numbered 28139112 within a 9ct gold case bearing hallmarks for London, 1969, with unassociated 9ct gold bracelet and folding clasp bearing hallmarks for Birmingham, case diameter 33mm, length 19.3cm, gross weight 47.5g. **£650-850**

206



† A 1970S 18CT GOLD OMEGA DE VILLE MANUAL WIND WRISTWATCH, REF. 97320/8270. The brown rectangular signed dial with quarter markers and white enamel hands, signed cal. 620 17 jewel manual wind movement numbered 31374696, within an 18ct gold case bearing Swiss assay marks, to the integral fancy textured link bracelet with maker's folding clasp, import marks for London, 1972, case diameter 37mm, length 19cm, gross weight 158.7g. With maker's box and papers. **£5,000-8,000**

207



A 1970S OMEGA DE VILLE QUARTZ WRISTWATCH, REF. 192.0028. The signed cushion shape white dial with baton markers and date aperture to 3, signed 15 jewel quartz movement numbered 40 084857, within a stainless steel case, maker's bracelet and folding clasp, case diameter 34mm. With maker's box. **£150-250**

208



Fine Jewellery & Watches, 13th Jun, 2024 11:00

A 1970S STAINLESS STEEL OMEGA CONSTELLATION CHRONOMETER AUTOMATIC WRISTWATCH, REF. 168019.

The signed textured dial with baton markers, outer minutes track, day and date aperture to 3, signed cal. 751 25 jewel automatic movement numbered 28753726 within a stainless steel case, to the unassociated fancy link bracelet, case diameter 35mm. With box and papers. **£500-700**

211



A 1970S OMEGA GENEVE AUTOMATIC WRISTWATCH, REF. 166.0170. The signed circular silver tone dial with baton markers, outer minutes track, day and date aperture to 3, signed cal 1022 automatic movement numbered 39 032057, with fancy bracelet and maker's folding clasp, case diameter 36mm. **£200-400**

209



A 9CT GOLD OMEGA GENEVE MANUAL WIND WRISTWATCH, REF. 131.5016. The signed circular dial with baton markers and outer minutes track, signed cal. 601 17 jewel manual wind movement numbered 32639001 within a 9ct gold case bearing hallmarks for London, 1972, case diameter 33mm, with unassociated black leather strap and buckle. With maker's travel case. **£250-450**

212



AN OMEGA CONSTELLATION QUARTZ WRISTWATCH, An Omega Constellation Quartz wristwatch, cal. 1330 signed quartz movement, within a stainless steel case numbered 191.0016, 191.0017, 391.0013, case diameter 32mm, with makers strap and folding clasp. £70-90

210



A 1970S STAINLESS STEEL OMEGA GENEVE AUTOMATIC WRISTWATCH, REF. 165.070. The signed circular dial with baton markers and outer minutes track, signed cal. 552 24 jewel automatic movement numbered 33515849 within a stainless steel case, to the unassociated bracelet with folding clasp, case diameter 34mm. With maker's box. **£250-450**

213



A STAINLESS STEEL OMEGA CONSTELLATION QUARTZ WRISTWATCH, A stainless steel Omega Constellation quartz wristwatch, the signed mother of pearl dial with diamond quarter marks, diamond bezel, quartz movement within a stainless steel case numbered 57019456, to the fancy link bracelet with folding clasp, case diameter 19mm. £150-250

Fine Jewellery & Watches, 13th Jun, 2024 11:00

214



A STAINLESS STEEL OMEGA CONSTELLATION QUADRELLA QUARTZ WRISTWATCH. A stainless steel Omega Constellation Quadrella quartz wristwatch, the signed black mother of pearl dial with roman numeral and dot markers, diamond set tonneau case, quartz movement within a stainless steel case numbered 59069978, with fancy link bracelet and folding clasp, case diameter 29mm. **£300-500**

A STAINLESS STEEL OMEGA SEAMASTER AUTOMATIC WRISTWATCH. The signed circular dial with baton markers, outer minutes track and date aperture to 3, signed automatic movement within a stainless steel case, to the maker's bracelet and folding clasp, case diameter 35mm. **£400-600**

217



AN OMEGA SPEEDMASTER RACING 'MICHAEL SCHUMACHER' AUTOMATIC WRISTWATCH, REF. 3518-50.00. Limited edition no. 4076/6000, the signed black checkerboard dial with baton markers, luminous outer track, three subsidiary dials and pushers to 2 and 4, signed cal. 3220 automatic movement within a stainless steel case numbered 5744335, to the maker's bracelet with folding clasp, case diameter 39mm. With maker's box and papers. **£2,000-4,000**

215



AN OMEGA QUARTZ WRISTWATCH, An Omega quartz wristwatch, cal. 1430, the signed gold tone dial with baton markers and date aperture to 3, signed 6 jewel quartz ETA movement numbered 255411 within a stainless steel and gold plated case numbered 1960312.04, with fancy link bracelet and folding clasp, case diameter 32mm. With maker's box and papers. £70-90

218



AN OMEGA SEAMASTER AQUA TERRA CO-AXIAL CHROMOMETER AUTOMATIC WRISTWATCH. The signed circular grey dial with tapered baton markers, outer minutes track, tapered hands and date aperture to 3, exhibition case back revealing a signed cal. 8500 co-axial 39 jewel automatic movement numbered 82062234, with maker's bracelet and deployment clasp, case diameter 41mm. **£2,000-4,000**

216



Fine Jewellery & Watches, 13th Jun, 2024 11:00

219



A 1970S STAINLESS STEEL ORIS 'STAR' AUTOMATIC WRISTWATCH, REF. 603-6821.

The signed blue cushion shape dial with baton markers, outer minutes track, day and date aperture to 3, ETA-2879 21 jewel automatic movement within a stainless steel case with maker's bracelet and folding clasp, case diameter 36mm. **£60-80**

220



A 1920S 9CT GOLD LADIES ROLEX MANUAL WIND WRISTWATCH. The signed hexagonal dial with Arabic markers and inner chapter ring, signed Rolex Prima 15 jewel manual wind movement within a 9ct gold case bearing import marks for Glasgow 1926, with expandable bracelet stamped 9ct, case diameter 20mm. **£150-250**

221



† A 1960S STAINLESS STEEL ROLEX OYSTER PERPETUAL EXPLORER PRECISION WRISTWATCH. Circa 1966, the black signed dial with luminous baton and Arabic hour markers, within a stainless steel case and oyster link bracelet with folding clasp, model no. 5500, 1354331, case diameter 34mm. With Rolex service pouch. **£4,000-6,000**

222



A 1960S STAINLESS STEEL ROLEX OYSTER PERPETUAL AIR KING SUPER PRECISION WRISTWATCH, REF. 5500. Circa 1963, the signed dial with gold tone baton markers and outer minutes track, automatic movement within a stainless steel case to the oyster bracelet and folding clasp, 845880, case diameter 34mm. **£2,000-4,000**

223



A 1960S ROLEX OYSTERDATE PRECISION WRISTWATCH, REF. 6694. The black signed dial with baton markers, outer minutes track and date aperture to 3, signed cal. 1215 17 jewel manual wind movement numbered 54874 within a stainless steel case numbered 111.62, 8XX722, with jubilee bracelet and folding clasp, case diameter 35mm. With makers box, no papers. **£1,500-2,500**

Fine Jewellery & Watches, 13th Jun, 2024 11:00

224



A 1980S STAINLESS STEEL ROLEX OYSTER PERPETUAL AIR KING PRECISION WRISTWATCH, REF. 5500. Circa 1988, the signed dial with baton markers and outer minutes track, automatic movement within a stainless steel case to the oyster bracelet and folding clasp, R245250, case diameter 34mm. With maker's box and papers. **£2,000-4,000**

227



† A STEEL AND EVEROSE GOLD ROLEX OYSTER PERPETUAL DATEJUST 41 WRISTWATCH, REF 126331. Circa 2016, the circular signed sunburst dial with diamond dot markers, outer minutes track and date aperture to 3, with fluted bezel and oyster bracelet in maker's everose gold and oystersteel, model no. 126331, 8Y9210R4, case diameter 41mm. With box, papers, tags and bezel guard. **£8,500-12,500**

225



A STEEL AND GOLD ROLEX OYSTER PERPETUAL DATEJUST WRISTWATCH. Circa 2000, the circular signed gold tone dial with baton hour markers, outer minutes track and date aperture to 3, with fluted bezel and jubilee bracelet, model no. 16233, P985865, case diameter 36mm. With box and papers. **£2,500-4,500**

228



AN EARLY 20TH CENTURY DIAMOND-SET COCKTAIL WATCH BY ROTARY, An early 20th century diamond-set cocktail watch by Rotary, with arabic markers and minutes track, cal 790 15 jewel manual wind movement numbered 50 XA, within a case marked 18ct & Plat, with diamond bezel, case diameter 14mm. **£100-200**

226



A LADIES STEEL AND GOLD ROLEX OYSTER PERPETUAL DATEJUST WRISTWATCH. Circa 2001, the circular gold-tone signed dial with baton hour markers, date aperture to 3, with polished bezel and oyster link bracelet, model CONFIRM, K455994, case diameter 26mm, with two spare links. **£1,500-2,500**

229



Buyer's Premium of 25% +VAT on each lot

Fine Jewellery & Watches, 13th Jun, 2024 11:00

A 1960S 9CT GOLD ROTARY MANUAL WIND WRISTWATCH, The signed dial with roman numeral and baton markers, outer minutes track and date aperture to 6, 21 jewel AS 1900/01 manual wind movement within a 9ct gold case bearing hallmarks for London, 1968, numbered 1273, with later leather strap and unassociated buckle, case diameter 34mm. **£100-200**

232



A LADIES STAINLESS STEEL SEIKO QUARTZ WRISTWATCH. The signed black mother of pearl dial with arabic and baton markers, outer minutes track and date aperture to 3, quartz movement within a stainless steel case with diamond bezel, numbered 359824 and 7N82-0BF0, with fancy link bracelet and folding clasp, case diameter 26mm. **£50-80**

230



A 1970S SILVER GILT ROY KING MANUAL WIND WRISTWATCH, A 1970s silver gilt Roy King manual wind wristwatch, ref. J.14, the rectangular signed black dial, manual wind movement within a silver gilt case bearing hallmarks for London, 1975, to the textured bracelet with maker's clasp, length 22.2cm, gross weight 81g. With original swing tag and maker's box. **£100-200**

233



A TAG HEUER CARRERA 'CALIBRE 1887' AUTOMATIC WRISTWATCH, REF. CAR2A10 / EAU5879. The black signed dial with arabic markers, three subsidiary dials, date aperture to 3 and tachymetre bezel, exhibition case back revealing a signed 39 jewel automatic movement, within a stainless steel case, with black leather strap and folding clasp, case diameter 43mm. With box and papers. **£800-1,200**

231



A 1970S SILVER MANUAL WIND WRISTWATCH BY ROY KING. The signed black square shape dial with baton hands, manual wind movement within a silver case bearing hallmarks for London 1977, with Gucci black leather strap and buckle stamped 925, case diameter 26mm. **£50-100**

234



Fine Jewellery & Watches, 13th Jun, 2024 11:00

A TAG HEUER FORMULA 1 QUARTZ WRISTWATCH, REF. CAZ101AC. The signed black checkerboard dial with baton markers, yellow chapter ring, subsidiary dials to 3, 6 and 9, and date aperture to 4, maker's quartz chrono movement within a stainless steel case numbered WZE6838, to the maker's bracelet with folding clasp, case diameter 43mm. With spare links, box and papers. **£1,500-2,500**

235



A TAG HEUER 'KIRIUM' QUARTZ CHRONOGRAPH WRISTWATCH, REF. CL111-50. The signed silver tone dial with luminous dot markers, outer minutes track, date aperture to 4 and three subsidiary dials, cal. 251 262 ETA 25 jewel quartz movement within a stainless steel case numbered HG1605, with bracelet and folding clasp, case diameter 38mm. With maker's box. **£150-250**

236



A 1950S TUDOR MANUAL WIND WRISTWATCH. The signed dial with arabic and baton markers, outer minutes track and subsidiary seconds dial to 6, cal. 59 signed 17 jewel manual wind movement within a stainless steel cushion shaped case numbered 11100 and 4692, case diameter 27mm, with later expandable bracelet. **£150-250**

237



A STEEL TUDOR PRINCESS OYSTERDATE WRISTWATCH, A steel Tudor Princess Oysterdate wristwatch, ref. 9301/1, the signed dial with baton markers, outer minutes track and date aperture to 3, automatic movement within a stainless steel case, numbered 830564 to the oyster bracelet with folding clasp, case diameter 26mm. With maker's box. **£200-400**

238



A 1940S VERTEX 'DIRTY DOZEN' WRISTWATCH. The signed black dial with military broad arrow, luminescent hands and dots, arabic hour markers, subsidiary seconds dial and outer minutes track, signed cal. 59 15 jewel manual wind movement, chrome topped case, stainless steel back, issue marked W.W.W. 3514289 to the inside, W.W.W. A 1373 3514289 to case back, lug marked 302, case diameter 36mm, with later black canvas strap. **£600-800**

239



Fine Jewellery & Watches, 13th Jun, 2024 11:00

A 1970S 9CT GOLD LADIES ZENITH MANUAL WIND WRISTWATCH. The signed circular dial with baton markers, signed 17 jewel manual wind movement within a 9ct gold case bearing import marks for Edinburgh, numbered 860D004, to the fancy link bracelet with folding clasp, case diameter 16mm, length 18cm, gross weight 18g. **£300-500**

240



TWO ROLEX KEYRINGS. Tan leather and chrome, each with maker's logo. With boxes. **£50-100**

241



WATCH PARTS & ACCESSORIES - AN AUDEMARS PIGUET ROYAL OAK EMPTY WATCH BOX. The maker's green leather screw shaped case with inner cushion and outer green cardboard box. **N.B. Box is empty. £80-120**

242



WATCH PARTS & ACCESSORIES - A PANERAI EMPTY WATCH BOX AND STRAP. The maker's black rubber strap, no buckle, and wooden outer case with cloths. **N.B. Box is empty. £80-120**

243



WATCH PARTS & ACCESSORIES - PATEK PHILIPPE CATALOGUES AND A WATCH TRAVEL BOX. To include New Models 2011, Baselworld 2012, Rare Handcrafts 2012, 2007-8 Collection catalogue, and Minute Repeater, catalogue from the 2012 London Exhibition. Watch Travel box ref. H997. **£70-90**

244



AN EARLY 20TH CENTURY 18CT GOLD DIAMOND ENAMEL FOB WATCH. The white enamel dial with Arabic markers, outer minutes track and subsidiary seconds dial to 6, unsigned hand wound movement within an 18ct gold case bearing Swiss assay marks, numbered 11502, case with green guilloche enamel detailing and inset rose cut diamond floral cluster, suspended from an accompanying green enamel and diamond bow brooch, stamped 18ct and L.J.C., length 6.7cm, case diameter 28mm, gross weight 23.8g. **£500-800**

245



Fine Jewellery & Watches, 13th Jun, 2024 11:00

A GEORGE III NICKEL SILVER PAIR CASED POCKET WATCH BY D.D. NEVEREN, LONDON. The signed dial with roman numeral markers, gilt spacers and outer minutes track, signed verge fusee movement within a case marked 'Maillechort' and numbered 45, with accompanying outer case, case diameter 66mm. **£80-120**

248



246



A FRENCH WWI NOVELTY OPEN FACE POCKET WATCH. The dial with 'Un Bon Coup De Pied Dans Le...Rhine!' 'A Good Kick in the...Rhine!' propaganda image regarding the German occupation of Alsace Lorraine, originally printed by P.Shneider & Co, with kite shape minutes and hour dial to top left corner, and seconds hand to lower right of dial, hand-wound unsigned movement within a nickel case, case diameter 50mm. **£80-120**

A LATE 18TH CENTURY GILT METAL OPEN FACE POCKET WATCH BY JULIAN LEROY, PARIS. Turkish market, the signed dial with black Turkish markers set in a raised white chapter, outer minute track with five minute divisions, verge fusee movement signed and numbered 32038 within a gilt metal case with tri-colour embossed floral decoration, case diameter 55mm. **£700-900**

249



247



A HAMILTON US NAVY COMPARING POCKET WATCH, REF. 2974B. The signed dial with arabic markers, outer minutes track and subsidiary seconds dial to 6, 17 jewel movement adjusted temp three positions numbered 2K1841, with cover 000304, and screw back base metal case engraved 'Bureau of Ships US Navy Comparing Watch N 4759-1941, case diameter 51mm. **£100-200**

AN 18CT GOLD FOB WATCH. The gold tone dial with roman numeral markers and outer minutes track, key wound movement within an 18ct gold case bearing Swiss assay marks, numbered 49461, yellow metal dust cover engraved 'Watchmaker to the Queen, Dent, 61 Strand, 84 Royal Exchange, London, case diameter 35mm, gross weight 32.8g. **£200-400**

250



Fine Jewellery & Watches, 13th Jun, 2024 11:00

AN 18CT GOLD OPEN FACE POCKET

WATCH. The gold tone dial with roman numeral markers and outer minutes track, unsigned key wound movement numbered 42654 within an 18ct gold case bearing hallmarks for London, 1934, numbered 634, case diameter 42mm, gross weight 57g. **£500-800**

251



A 9CT GOLD WALTHAM OPEN FACE

POCKET WATCH. The signed white dial with roman numeral markers, outer minutes track and subsidiary seconds dial to 6, signed 17 jewel manual wind movement numbered 22864405 within a 9ct gold case bearing hallmarks for Birmingham, 1924, numbered 302916, case diameter 49mm, gross weight 86.8g. **£400-600**

252



EIGHT VICTORIAN AND LATER SILVER OPEN FACE POCKET WATCHES, Eight

Victorian and later silver open face pocket watches, to include two by H. Stone of Leeds, G Parkin of Newcastle on Tyne, R.R Snow & Son of Ripon, H. Jusman of Wolverhampton, Corrall of Mansfield, Waltham, and one unsigned, case diameters 47 to 59mm, gross weight 983.4g. (8). **£100-200**