



17. Cheers
Ltd print number 78 of 500.
Signed. Image area 10.5" x 7.5"
£180 - £250



19. I'll Do The Talking Son!
Ltd print number 462 of 500.
Signed. Image area 10" x 18"
£350 - £500



16. Lamping
Ltd print number 76 of 500.
Signed. Image area 10.5" x 7.5"
£180 - £250



25. Into The Light
O/C, 48" x 24" Guide Price £10,000 - £14,000
Original of Ltd Print



40. Deerhounds
O/P, 20" x 30" Guide Price £2,000 - £2,800



39. A Quiet Smoke O/P. 11.5"x 9.5"
Guide Price £1,500 - £2,000



31. The Foraging Committee
O/C. 20" x 30" Guide Price £1,800 - £2,400



Mick Cawston On-line Auction May 13th - 19th 2024



28. The Boss O/P. 10"x 8"
Guide Price £1,200 - £1,800



48. Fox Cubs
O/P 15"x 19" Guide Price £1,200 - £1,500



Online at www.the-saleroom.com, link via www.sallymitchell.com



23. What About Me
Rare Remarqued Print
Signed and Numbered 29/500
Image area 10.5" x 8"
£200 - £250



18. The Scotsman
Rare Remarqued Print
Signed and Numbered 34/500
Image area 10.5" x 8"
£200 - £250



6. Firday Afternoon
Rare Remarqued Print
Signed and Numbered 99/500
Image area 10.5" x 8"
£200 - £250



2. Evidence
Original of Ltd Print
Monogramed M.C.
W/C Image area 4" x 12"
£350 - £500



46. Flushed O/P, 20" x 16"
Guide Price £3,000 - £4,000
Original of Print.



41. Sea Gull
Pastel, 13.5" x 19.5"
Guide Price £350 - £450



34. Moving the Kids
O/C, 24" x 34" Guide Price £2,200 - £2,800



37. Boxing Hares
O/P 16" x 24" Guide Price £1,200 - £1,600



27. The Belstone Fox
O/C 24"x 20" Guide Price £1,200 - £1,800

This brochure shows a selection of the auction with brief details, please see all the entries and full descriptions online.

Sally Mitchell's Gallery The Newcastle Arms, 1 Market Place, Tuxford, Notts, NG22 0LA
01777 872 152 / 838 234 info@sallymitchell.com

The 8th Biennial On-line Auction of the Work of Mick Cawston

The Auction: As in previous years this is an 'Ebay style', on-line auction hosted by **the-saleroom.com**. Bids can be placed from Monday 13th May 9am and the lots will finish in one minute intervals starting from 5pm on Sunday 19th May. Bids received on individual lots during their last minute will extend that lot for another minute and so on! We recommend placing your maximum bid and then leaving it. It will only run up to where it needs to be and that way you don't get carried away!

Sold as Seen: All Lots are sold as seen. We have given condition reports and you are welcome to ask for further images and description on individual pieces, but you must satisfy yourself in regards to their condition! You can view them in detail on our website: **sallymitchell.com** or in person at our gallery in Tuxford, Notts, NG22 0LA, from Monday 22nd April onwards. Estimates and reserves are subject to change right up until Monday 13th.

Payment: On registration, on **the-saleroom.com** you will be asked for credit card details as a safeguard. If you are lucky enough to be the successful bidder on a lot or lots you will be required to pay in full within 3 days of the auction ending. Please note that all purchases are liable for the 17.5% + Vat buyers premium. (VAT is only charged on the premium). You may select another method of payment at that time. However by entering your bid on-line you have committed to purchasing the lot or lots, should you back out of the purchase after the auction has ended you will be responsible for reselling costs and deficiencies in the purchase price reached from a re-sale.

Collection/Delivery: Once payment has cleared, your won lot(s) can be collected from our gallery, or we can arrange delivery via a courier service, we can ship to most parts of the world. UK delivery is charged at £25 per item. The cold cast bronze sculptures must be collected, unfortunately we cannot ship. Overseas shipping is charged at cost. Items must be removed from our gallery by the end of August or storage charges may be applicable at £5 per week per item.

Questions: please feel free to ring or email if you have any questions 01777 838234 / 872152, info@sallymitchell.com **Please see www.the-saleroom.com for full terms and conditions.**



66. The Hopeless Hunter
Ltd print number 691 of 850.
Signed. Image area 3" x 7" each.
£120 - £160 Framed



44. All Things Exmoor
O/P. 14.5"x 11.5"
Guide Price £400 - £500



15. I Spy, Missed & Drat'
Ltd print no. 640 of 850.
Signed. Image area 3" x 9" each
£120 - £180 Framed



9. Mr Moonlight
Cold Cast Bronze. 7.5" High
Guide Price £800 - £1,000



32. The Campfie
Cold Cast Bronze.
6.5" High, Base 9"x 6"
Guide Price £1,000 - £1,200



4. Portriat of a Fox
O/P. 10"x 8"
Guide Price £800 - £900



49. The Wildfowler
O/C. 24"x 30"
Guide Price £1,000 - £1,500



26. Haring Around O/P. 16"x 20"
Guide Price £1,200 - £1,600



45. Selective Hearing
Framed Ltd print no. 4 of 500
Signed. Image area 11" x 9"
Guide Price £200 - £300



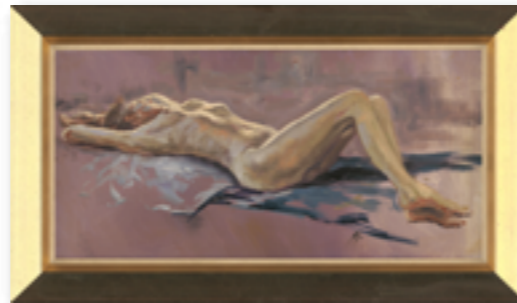
52. Trouble Brewing
Rare Remarked Print
Signed and Numbered 381/500
Image area 7" x 9"
Guide Price £250 - £300



42. Trespassers Will be Fed
Framed Ltd print no. 4 of 500
Signed. Image area 11" x 9"
Guide Price £200 - £300



50. Lazy Lurcher
Cold Cast Bronze. 4" High, Base 8"x 5"
Guide Price £800 - £1,000



38. Reclining Nude
O/P. 12"x 24" Guide Price £400 - £500



13. Going to Ground
O/C. 16"x 20"
Guide Price £1,000 - £1,400



54. Greyhound Racing O/C. 16"x 30"
Guide Price £1,000 - £1,500



69. Far From The Madding Crowd
Framed Ltd print no. 4 of 500.
Signed. Print area 11" x 9"
£100 - £140



60. Hi Lordship
Ltd print no. 2 of 500.
Signed. Print area 12" x 6"
£150 - £200



58. A Tense Moment
Framed Ltd print no. 2 of 500.
Signed. Print area 10.5" x 21"
£140 - £180



47. The Moongazing Hare
O/C. 20"x 16"
Guide Price £1,400 - £1,800



5. After Dark
O/P. 15"x 11"
Guide Price £800 - £1,000
Original of Print



3. Badger
O/C. 14"x 18"
Guide Price £1,000 - £1,200



62. Exmoor Roundup
O/P. 24"x 30"
Guide Price £2,000 - £3,000



61. Ferreting O/C. 24"x 18"
Guide Price £700 - £1,000
Original of Open edition Print.



8. Orders for The Day
Very Rare and unusual print.
Image area 15" x 19"
£250 - £350



20. Mask
Original Silkscreen Print No. 4/4.
Signed. Image area 18.5" x 12.5"
£250 - £350

Front cover Lots:

- 53.** Into the Clearing O/C 28"x 36" £2,000 - £3,000
10. Mr Mischief O/P 11.5"x 9" £1,400- £2,000.
1. Running Mates O/P. 14" x 21" £800 - £1,200

O/C = Oil on Canvas, O/P = Oil on Panel, W/C = Watercolour