

Summers Place Auctions Ltd



HOME & GARDEN

26 & 27th March 2024

Sp
SUMMERS PLACE
AUCTIONS

Live Auction (Lots 1-52)
Tuesday 26 March 2024
at 13.00 BST

Sealed Bid Auction (Lots 100-266)
Bids must be with us by 16.00 GMT
Wed 27th March 2024
sealedbids@summersplaceauctions.com

Viewing By appointment only



Bid online at **Summers Place Live**
No surcharge (*normal BP & VAT apply*)
Register through our website

Bid online at our auctions through
the-saleroom.com

Please note there is a 5% surcharge for using
the sale-room bidding facility

SPECIALISTS AND AUCTION ENQUIRIES

Rupert van der Werff
Specialist
+44(0)1403 331 333
rupert.werff@summersplaceauctions.com

Errol Fuller
Curator for Natural History

Administrator/Accounts/Shipping

Kate Diment
+44(0)1403 331 335
kate.diment@summersplaceauctions.com

Julian Wright
+44(0)1403 331 337
julian.wright@summersplaceauctions.com

Office
+44 (0) 1403 331331

**Visit our website for additional
images and videos of many of the
Lots**

www.summersplaceauctions.com

Sealed Bid Auction Lots 100-266

All sealed bids must be with us, at the latest by 4pm GMT on the 27th March since the bids will be opened on the 28th March. The winning bid will be the highest left on each lot above the reserve. Bids are non sequential and the highest bid left is the price at which the lot is sold plus buyers premium and any VAT liable. In the event of two identical winning bids being left on the same lot, the earliest received bid shall take precedence. Summers Place Auctions decision on which is the winning bid shall be final. Winning bidders will be invoiced after the bids are opened. For further information on sealed bids and how they work see our conditions of business.

100

A pair of wrought iron gates

2nd half of 20th century

350cm high by 354cm wide overall

These gates were made by the Covent Garden Opera house blacksmith for the entry to the sponsors area at Arundel castle for the annual festival

£1,500-2,500

101

A wrought iron estate gate and posts

19th century
300cm wide overall

£300-500



For details of our buyers premium which is added onto the hammer price together with any other applicable charges and AML requirements, please refer to our guide for prospective buyers



102
**A pair of wrought iron
garden gates**

late 19th century
209cm high by 274cm
wide overall

£1,000-2,000



103
**A pair of large wrought
iron gates**

early 20th century
264cm high by 350cm
wide
(only the gates included in
this lot)

£2,000-3,000

Online bidding via SummersPlace Live - register through www.summersplaceauctions.com



104
A pair of large
composition stone balls

modern
52cm diameter

£600-1,000

104A
A pair of domed
gatepiers

French, 19th century
67cm diameter

£300-500

105
A wrought iron gate
overthrow

French, 18th century
217cm wide

£500-800

106
A heavy wrought iron
gate

French, 19th century
243cm high by 95cm wide

£1,000-1,500

For details of our buyers premium which is added onto the hammer price together with any other applicable charges and AML requirements, please refer to our guide for prospective buyers



107
**A set of eight Yorkstone
 gate piers**

19th century
 48cm high

£1,500-2,500

108
A set of six street lamps
 20th century
 4m high
 damages

£500-800

109
**A pair of rare cast iron
 lampposts from St Martin,
 Carribean**

dated 1822
 374cm high

£600-1,000

110
A gilt brass lantern

early 20th century
 with cut glass panels
 100cm high by 40cm wide

Provenance: The Gordon
 Gridley Collection,
 London
 £500-800



108



109



Online bidding via SummersPlace Live - register through www.summersplaceauctions.com



111
**A pair of Brèche d'Alet
marble columns**

19th century
lacking socles
94cm high

£200-300



112
**A pair of winged
lead putti finials on
composition stone
spheres**

recent
90cm high overall

£2,500-4,000



113
A pair of lead lidded urns

20th century
51cm high

£250-400

For details of our buyers premium which is added onto the hammer price together with any other applicable charges and AML requirements, please refer to our guide for prospective buyers



115



116

114
A set of three massive
granite columns

19th century
372cm high

£1,500-2,500

115
† Large Reflection Tower

Stainless Steel
400cm

£2,000-3,000

116
† Zenith

Stainless steel
400cm high

£2,000-3,000

Online bidding via SummersPlace Live - register through www.summersplaceauctions.com



117

† **Large Reflection Tower**

stainless steel
400cm high

£2,000-3,000

118

**A set of three unusual
curved wooden doors
and surrounds**

French, 19th century
267cm high by 108cm
wide

£500-800



For details of our buyers premium which is added onto the hammer price together with any other applicable charges and AML requirements, please refer to our guide for prospective buyers



119
**A wrought iron and cast
bridge**

(made up) incorporating
19th century elements
155cm high by 132cm
long

£6,000-10,000

120
**A collection of Purbeck
limestone flagstones**

antique, approx 30m²

£3,000-5,000

121
**A collection of
Yorkstone flagstones**

antique, approx 30m²

£3,000-5,000



120



121

Online bidding via SummersPlace Live - register through www.summersplaceauctions.com

122
**A massive inlaid
marble Rococo
style architectural
entranceway**

Italian, late 19th century
482cm high

£30,000-50,000

123
**A large pair of French
doors**

19th century
308cm high by 148cm
wide

£400-600



For details of our buyers premium which is added onto the hammer price together with any other applicable charges and AML requirements, please refer to our guide for prospective buyers

124

An historic and spectacular Barn Frame carefully dismantled and available for re-erection

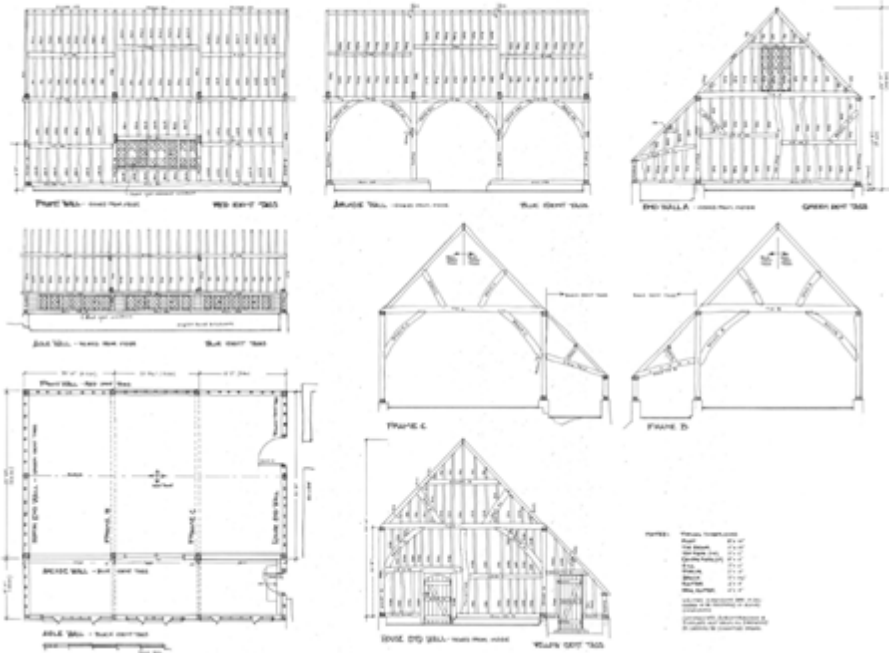
photographed drawn, numbered and carefully dismantled
The frame is three bay, 10.92m long by 9.55m wide including the aisle which is 2.62m wide. The overall height of the frame to the apex of the roof is 7.30m

This barn was the last original building standing on the St Georges Hill Estate at Weybridge. The barn was part of the farm that owned and farmed the land which now forms the iconic estate. The barn had been preserved and used as a great party room adjacent to a new house built in the early 1900s.

The historic and spectacular timber frame of Blue Barn, the last original building of the farm that owned and farmed the land which now forms the iconic St Georges Hill Estate at Weybridge, has been drawn, photographed, and numbered before being carefully dismantled for re-erection.

The barn had been preserved and used as a great hall adjacent to an early St Georges Hill Estate house which was built on the site of the original farmhouse in the early 1900s.

This new use for the barn protected the frame when other similar farm barns were becoming less and less used and being



Online bidding via SummersPlace Live - register through www.summersplaceauctions.com

allowed to fall into disrepair.

The frame, constructed in oak and pine, is in exceptional condition. It comprises three bays with an open aisle along one side. The oak roof rafters are tenoned into the staggered butt purlins which are tenoned into heavy principle rafters which are then supported on queen struts; the impressive tie beams are supported on substantial wall posts and large curved braces, the whole, resulting in an exceptionally beautiful and impressive structure.

The frame is 10.92m long by 9.55m wide including the aisle which is 2.62m wide. The overall height of the frame to the apex of the roof is 7.30m. The windows, inserted in the early 1900s when the barn was converted to become the great hall, are a particular and pleasing feature.

The barn was dismantled in December 2023, just before the 1900s house was demolished, to be replaced by a new mansion.

The barn frame is now safely stored under cover at Dunsfold, Surrey and is immediately available and ready for re-erection.

Included with the sale of the frame is free consultancy on all aspects relating to the re-erection of the barn frame from specialists Antique Buildings Ltd.

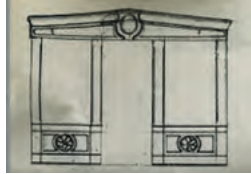
£60,000-100,000



For details of our buyers premium which is added onto the hammer price together with any other applicable charges and AML requirements, please refer to our guide for prospective buyers



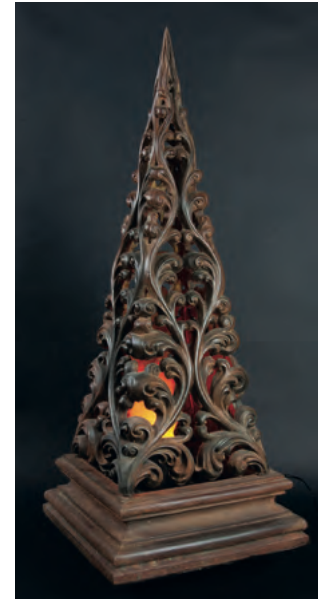
125
A stone shop front
 French, 19th century
 4m by 4m approx
 £4,000-6,000



126
Two pet gravestones
 the larger 80cm high
 £150-250



127
A pair of cast iron boot scrapers
 late 19th century
 46cm high
 £200-300



128
A stoneware architectural element
 late 20th century
 70cm high by 28cm wide
 by 28cm deep
 £150-250

Online bidding via SummersPlace Live - register through www.summersplaceauctions.com



129
**Attributed to Charles
 Wheeler: A monumental
 Portland stone clock,
 dated 1956**

109cm high by 277cm
 wide

Provenance;
 The clock was removed
 from the Anglo American
 and DeBeers building,
 London which was
 refurbished in the 1970's.
 The original location for
 this clock is not known
 but stylistically it very
 much fits with Wheeler's
 work at the time.

£5,000-8,000

130
**A Noon day canon
 sundial**

circa 1900
 dial 36cm diameter
 signed Negretti & Zambra
 with restorations

£2,500-3,500



For details of our buyers premium which is added onto the hammer price together with any other applicable charges and AML requirements, please refer to our guide for prospective buyers



131
A composition stone Japanese kasuage lantern

20th century

£600-100



132
A large carved gritstone trough

20th century
136cm by 96cm by 34cm

£500-800

133
A composition stone basket of fruit on pedestal

20th century, 112cm high overall

£250-400

134
A near pair of troughs

20th century, 90cm by 66cm by 36cm

£400-600



Online bidding via SummersPlace Live - register through www.summersplaceauctions.com



135

**135
A set of four saddlestones**

comprising four sandstone
saddlestones with
composition bases:
2 x average height 78cm
2 x average height 72cm

£400-600

**136
A set of four
saddlestones**

average height 69cm

£400-600

**137
A carved hardwood
planter**

20th century
43cm high by 56cm
diameter

£150-250



136

**138
A set of four
saddlestones**

the tallest 78cm approx

£400-600

**139
A set of four composition
stone finials on plinths**

20th century
160cm high overall

£1,500-2,500



138



For details of our buyers premium which is added onto the hammer price together with any other applicable charges and AML requirements, please refer to our guide for prospective buyers



140
**A large bronze armillary
on limestone pedestal**

recent
178cm high overall

£3,000-5,000

Online bidding via SummersPlace Live - register through www.summersplaceauctions.com



141
**A large shallow circular
granite trough**

123cm long by 107cm
wide

£80-120



142
**A shallow circular
granite trough**

109cm long by 114cm
wide

£80-120



143
**A composition stone
 birdbath fountain**

20th century
 95cm high

£500-800



144
**An unusual bronze wall
 fountain**

early 20th century
 inscribed sed aqua quam
 dabo ei fiet in eo fons
 aquae salientis
 in vitam aeternum
 210cm high by 125cm
 wide

The translation of the
 latin inscription reads; but
 the water that I shall give
 him shall become in him
 a fountain of water into
 eternal life

£1,500-2,500

For details of our buyers premium which is added onto the hammer price together with any other applicable charges and AML requirements, please refer to our guide for prospective buyers



145
A bronze fountain of a Marlin

20th century
252cm high

£3,000-5,000

146
A figural bronze fountain

20th century
78cm high

£2,000-3,000

147
Simon Creto

Frog Bird Bath
Opal Stone
Unique
17cm high by 43cm wide
by 32cm deep

£500-1,000

Online bidding via SummersPlace Live - register through www.summersplaceauctions.com



148
A stoneware serpent fountain

38cm high by 23cm wide by 25cm deep

£250-400



149
A terracotta figure of a bird lady

French, circa 1900
Impressed SEAU PARIS
187cm high (restorations)
on later base to be used as a fountain

£1,000-1,500

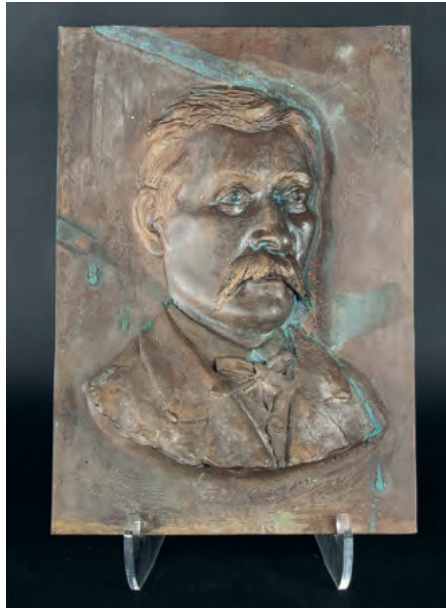
For details of our buyers premium which is added onto the hammer price together with any other applicable charges and AML requirements, please refer to our guide for prospective buyers



150
**A pair of composition
stone rams' head urns on
pedestals**

1st half 20th century
114cm high

£400-600



151
**A composition stone
figure of two cherubs
holding a shell bowl**

2nd half 20th century
100cm high
together with a
**composition stone
trough**
70cm long

£300-500



152
A bronze portrait plaque

signed Maxime Luess
50cm high by 35cm wide

£300-500



153
**An aerofoil stone tablet
with hand carved
inscription**

inscribed 'All the flowers
of all the tomorrows are in
the seeds of today'
104cm high

£300-500

Online bidding via SummersPlace Live - register through www.summersplaceauctions.com

154

**A resin lifesize model of
a cow**

2nd half 20th century

232cm long

£800-1,200



155

†A kadai

on low stand with a grill

140cm

£1,000-1,500



For details of our buyers premium which is added onto the hammer price together with any other applicable charges and AML requirements, please refer to our guide for prospective buyers



156
A stoneware group

late 19th century
possibly by Doulton
142cm high

£1,500-2,500

157
**A pair of carved
limestone gentlemen**

20th century
64cm high

£400-600



Online bidding via SummersPlace Live - register through www.summersplaceauctions.com



158
A set of five carved limestone putti

20th century
the tallest 67cm high

£1,000-1,500

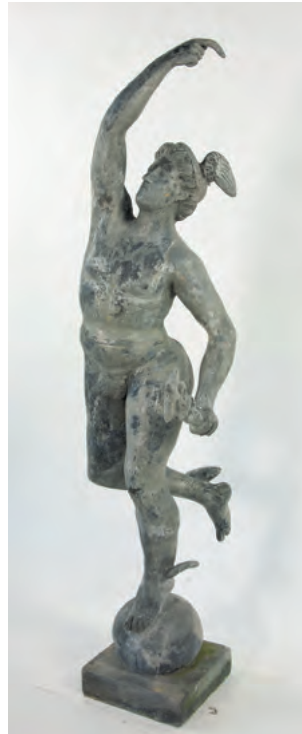
159
A pair of carved limestone rustics

20th century
150cm high

£1,000-1,500



For details of our buyers premium which is added onto the hammer price together with any other applicable charges and AML requirements, please refer to our guide for prospective buyers



160
Quartal Bass

Heavy gauge polished stainless steel Windchime
Tempered aluminum alloy tubing
Solid polyethylene clappers
Edition Open
229cm overall hanging length

£600-800

161
A composition stone fountain figure

20th century
147cm high

£400-600

162
A wrought iron weathervane

19th century
152cm high

£120-180

163
After Giambologna: A lead statue of Mercury

20th century restorations
120cm high

£500-800



Online bidding via SummersPlace Live - register through www.summersplaceauctions.com

164
**After the Antique: A
Horse bust**

20th century
Bronze
78cm high

£3,000-5,000

165
**Emile Wolff (1802-1879):
A carved white marble
group of the sleeping
cupid and a dog**

signed E. Wolff Fe Roma
1870
44cm high by 100cm long

Emil Wolff (1802–1879)
was a 19th-century
German sculptor and
occasional artist in oil
paints.

He was born in Berlin on
2 March 1802. From 1815
he studied at the Prussian
Academy of Arts in Berlin.
He won a scholarship to
study in Rome in 1822
under Bertel Thorwaldsen.

In 1865 he exhibited at
the Dublin International
Exhibition.

He died in Rome on 29
September 1879.

£2,000-4,000



For details of our buyers premium which is added onto the hammer price together with any other applicable charges and AML requirements, please refer to our guide for prospective buyers



166
A wirework rose arch

2nd half of 20th century
258cm above ground
38cm submerged feet

£600-1,000



167

167
A curved limestone garden bench

recent
140cm wide

£1,000-2,000



168

168
A curved limestone garden bench

recent
140cm wide

£1,000-2,000

Online bidding via SummersPlace Live - register through www.summersplaceauctions.com



†169
**A pair of carved sandstone
 throne chairs**

20th century
 109cm wide

£3,500-4,500

170
**A Fern and Blackberry
 style cast iron seat**

20th century
 109cm wide

£400-600

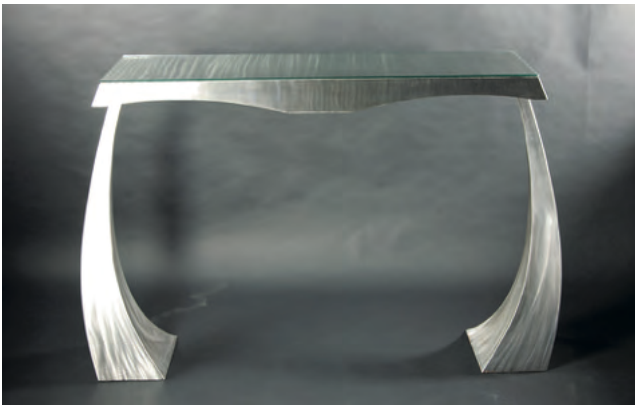
171
**A suite of Arras style
 wrought iron garden
 furniture**

recent
 comprising a circular garden
 table and four chairs
 112cm diameter

£1,200-1,800

For details of our buyers premium which is added onto the hammer price together with any other applicable charges and AML requirements, please refer to our guide for prospective buyers





172
**An Arras style four seater
ladderback garden seat**

recent
190cm wide
£800-1,200

173
**Two steel ribbon back
carver garden chairs with
cafe table**

recent
60cm diameter
£500-800

174
**Two Arras style steel
ladderback garden chairs
with side table**

recent
122cm by 71cm
£800-1,200

175
A chrome console table

with glass top
140cm wide by 91cm high
£200-300



176
A cast iron circular table
with Belgium fossil
marble top

French, mid 20th century
96cm diameter

£800-1,200



178
A large Root bench

Teak Wood
Unique
105cm high by 185cm
wide by 80cm deep

£600-800



177
A pair of laquered
brass and glass square
pedestals by Pierre
Vandel Paris

100cm high by 30cm
square

£150-180



179
A rare Ducel foundry cast
iron seat

mid 19th century
the front apron stamped
Ducel Fils, Rue des A***r,
Paris, facit
156cm long

£800-1,200

For details of our buyers premium which is added onto the hammer price together with any other applicable charges and AML requirements, please refer to our guide for prospective buyers



180
Paul Wells

Wolfe
Copper
Unique
67cm high by 200cm wide
by 240cm deep

£8,000-12,000

181
Inspired by Luca Pizzi

Face
Reconstituted Volcanic
Rock
Edition of 10
170cm high by 130cm
wide by 60cm deep

£6,000-8,000

182
**A Set of Three Root
Mushrooms**

Teak Wood
Unique
Large 105cm high by
75cm wide by 65cm deep,
Small 80cm high by 60cm
wide by 50cm deep

£600-800

183
Lifefize Horse

21st Century
Bronze
220cm high by 260cm
wide by 85cm deep

£20,000-30,000

Online bidding via SummersPlace Live - register through www.summersplaceauctions.com



For details of our buyers premium which is added onto the hammer price together with any other applicable charges and AML requirements, please refer to our guide for prospective buyers



184
Marc Caelenberghe

Bullish Star
Bronze with unusual
patina
19cm high by 40cm wide
by 20cm deep

£1,800-2,400



185
Sarah Lewington

Running Hare
Bronze
Edition 2 of 12
Signed
26cm high by 38cm wide
by 13cm deep

£2,200-3,200

Online bidding via SummersPlace Live - register through www.summersplaceauctions.com

186
Polar Bear

Bronze
Signed C.A.
45cm high by 88cm wide
by 30cm deep

£2,200-3,200



187
Sarah Lewington

Landing Hare
Bronze
Signed
Edition 2 of 12
28cm high by 58cm wide
by 13cm deep

£2,500-3,500



For details of our buyers premium which is added onto the hammer price together with any other applicable charges and AML requirements, please refer to our guide for prospective buyers



188



188
Simon Creto

Enjoying the Sun
Magnesite Stone, Unique
28cm high by 52cm wide
by 38cm deep

£800-1,200

190
Alexandeer Kazanov

Frog On A Stone
Bronze
11cm high by 11cm wide
by 6cm deep

£100-200



189
Hare

Bronze
2011
12cm high by 4cm wide
by 4cm deep

£80-120

191
Two boxing hares

20th century, Bronze
each signed Mene
83cm high

£2,000-3,000

Online bidding via SummersPlace Live - register through www.summersplaceauctions.com



192

▲ **Brian Alabaster**

Billy

Bronze

Signed

Edition IX of X

23cm high by 92cm wide by 45cm deep

£4,000-7,000

193

Martin Williams

Bird 1

Bronze on Stone base

Signed

Unique

15cm high by 18cm wide by 13cm deep

£800-1,200



For details of our buyers premium which is added onto the hammer price together with any other applicable charges and AML requirements, please refer to our guide for prospective buyers



194
▲Christian Maas (ARR)

Valse au Clair de
Lune (Dancing in the
Moonlight)
Bronze
Signed with the artist
signature and foundry
stamp

163cm high by 100cm
wide by 73cm deep

£6,000-8,000



195
John Cox

Flight of Ducks II (Water
Fountain)
Bronze
127cm high by 95cm wide
by 80cm deep

£3,000-5,000

Online bidding via SummersPlace Live - register through www.summersplaceauctions.com



196
John Cox

Leaping Roe Deer Stag and
Hind
Bronze
Each approx 126cm high
by 106cm wide by 35cm
deep

£6,000-8,000



197
Collin Kellam

Hermit Crab
Stoneware
Unique
36cm high by 26cm wide
by 31cm deep

£700-1,000



For details of our buyers premium which is added onto the hammer price together with any other applicable charges and AML requirements, please refer to our guide for prospective buyers



198



200



199

198
Emmanuel Changunda

New Beginning
Opal Stone, Unique
62cm high by 88cm wide by
25cm deep

£2,000-4,000

199
Victor Matafi

Eternal
Springstone on Wooden Base
Unique
50cm high by 25cm wide by
20cm deep

£800-1,20

200
▲Sue Jones

Small Resonance
Slate and Stainless Steel on
Stone base
Unique,
48cm high by 38cm wide
by 15cm deep

£800-1,200

Online bidding via SummersPlace Live - register through www.summersplaceauctions.com

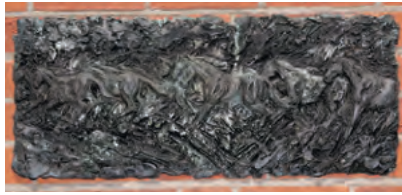


201
Tonderai Sowa

Infinity
Springstone
Unique
49cm high by 77cm wide
by 37cm deep

£2,000-4,000

For details of our buyers premium which is added onto the hammer price together with any other applicable charges and AML requirements, please refer to our guide for prospective buyers



Online bidding via SummersPlace Live - register through www.summersplaceauctions.com

202

▲ **Sophie Louise White**

Three Small Brass Panels
2013
depicting galloping horse
28cm high by 74cm wide

£400-600

203

A life size driftwood horse

late 20th century
144cm high

£2,000-3,000

204

Nineteen

Bronze with a variegated
green patination
82cm high by 56cm wide by
50cm deep

£2,000-3,000

205

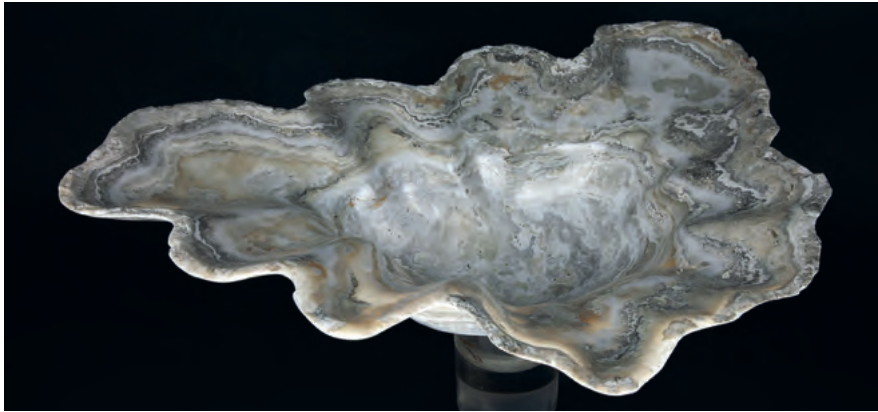
Anon

Twisted Tower
Copper
Unique
55cm high by 20cm wide by
20cm deep

£800-1,200



For details of our buyers premium which is added onto the hammer price together with any other applicable charges and AML requirements, please refer to our guide for prospective buyers



206

A large polished onyx bowl

Mexico
68cm by 52cm

£1,500-2,500

207

An amethyst geode mirror with hanging bracket

Brazil
39cm high by 35cm wide

£400-600

208

An amethyst geode mirror with hanging bracket

Brazil
38cm high by 34cm wide

£400-600

209

A lapis lazuli veneered platter

39cm diameter

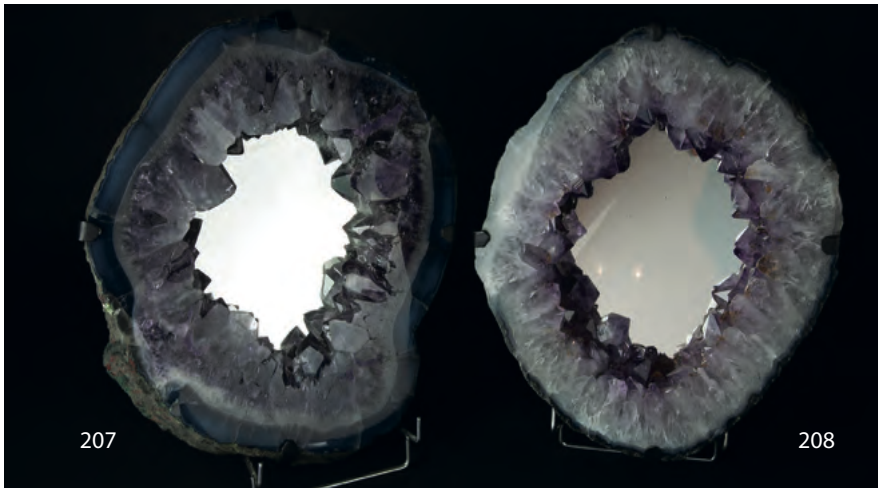
£150-250

210

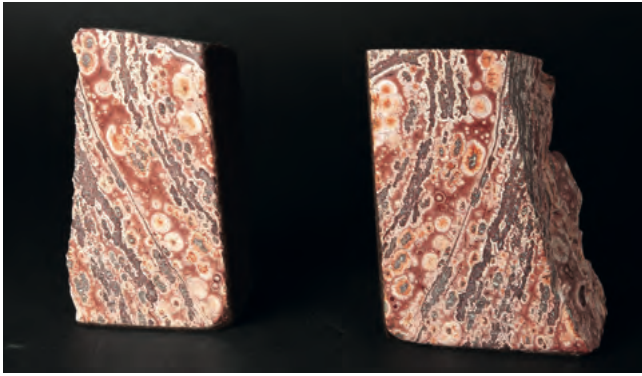
A lapis lazuli veneered sink

43cm diameter

£300-500



Online bidding via SummersPlace Live - register through www.summersplaceauctions.com



211
A pair of Poppy jasper
bookends

Mexico, 19cm high

£100-150

212
A set of three landscape
stone columns

China, largest 22cm high

£150-180

213
A calcite sink

Indonesia, 41cm diameter

£300-500

214
A Druzy amethyst on
stand

Brazil
56cm high overall

£500-750

For details of our buyers premium which is added onto the hammer price together with any other applicable charges and AML requirements, please refer to our guide for prospective buyers



215
A pair of monumental
orthoceras obelisks

Devonian
150cm high

£300-500



216
A pair of black marble
and malachite veneered
obelisks

modern
77cm high

£250-400



217
A large Orthoceras
plaque

Morocco, Devonian
96cm high by 48cm wide

£150-250

Online bidding via SummersPlace Live - register through www.summersplaceauctions.com



218
A Tiger iron slice

Australia
37cm high by 26cm wide

£200-400



219
An unpolished Lapis lazuli freeform

Afghanistan
35cm high by 41cm wide
by 22cm deep
40.8kg

£3,000-5,000

220
**Two dinosaur eggs
(Oviraptor spp.)**

China, Cretaceous
15cm

£600-1,000



For details of our buyers premium which is added onto the hammer price together with any other applicable charges and AML requirements, please refer to our guide for prospective buyers



222
An Ichthyosaur vertebrae with some ribs plaque

Holzmaden, Germany
 100cm by 49cm

The fossil locality at Holzmaden in Germany is celebrated for specimens that show beautiful preservation. The rocks they come from are lower Jurassic in age (approximately 180 million years old). Fossils of many kinds of creatures are found at Holzmaden but Crinoids (sea lilies) and ichthyosaurs are among the most sought-after and are perhaps the most desired by collectors.

£600-1,000



223
A set of three Tilobites in display cases

Morocco, Devonian
 largest 12cm high by 17cm wide by 13cm deep
 medium size 12cm high by 15cm wide by 15cm deep
 smallest 12cm high by 14cm wide by 13cm deep

£200-300

221
A fossilised Sharks' tooth display case

Moroccan, Iocene
 74cm high by 87cm wide

£1,000-1,500



Online bidding via SummersPlace Live - register through www.summersplaceauctions.com



224
A large picture frame
case of crustaceans

57cm high by 67cm
wide

£500-800



225
A framed display of crustaceans

recent
50cm high by 39cm wide
Non CITES

£150-250



226
A Megalodon tooth

15cm high

£250-350

227
Two mummified fish in display
frame

modern
20cm by 20cm square

£50-80



For details of our buyers premium which is added onto the hammer price together with any other applicable charges and AML requirements, please refer to our guide for prospective buyers



228
**A Cape buffalo head
mount**

100cm deep

£600-800

229
An American bison head

74cm high by 71cm deep

£1,000-1,200

230
**A Himalayan black bear
head**

67cm deep

£2,000-3,000

Online bidding via SummersPlace Live - register through www.summersplaceauctions.com



231
**A headmount Briard dog
on shield**

65cm high

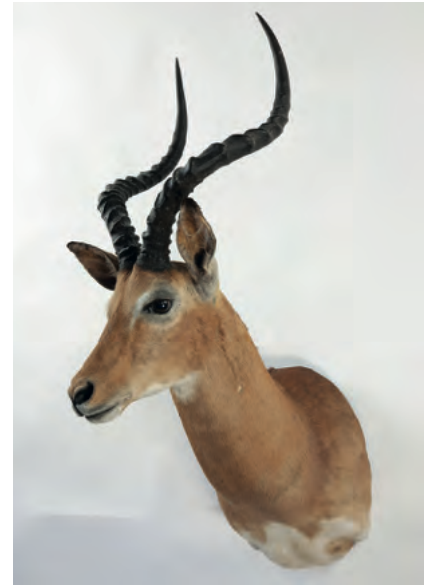
£500-680



233
A headmount Impala

103cm high

£250-380



232
An Eland head

120cm high by 97cm deep

£600-800

234
**A headmount Barbary
sheep female**

61cm high by 50cm deep

£250-380



For details of our buyers premium which is added onto the hammer price together with any other applicable charges and AML requirements, please refer to our guide for prospective buyers



235
**An impressively large
greater Kudu head by
Peter Spicer**

188cm high by 96cm deep

£600-800

236
**A headmount Black wild
boar**

55cm deep

£200-340

237
An Oryx skull on shield

120cm high overall

£150-240

238
**A headmount Red
hartebeest**

109cm high by 67cm deep

£250-380

Online bidding via SummersPlace Live - register through www.summersplaceauctions.com



239
A headmount Impala

86cm high

£250-380



241
A headmount Spanish ibex

68cm high by 57cm deep

£250-380



240
A headmount Gemsbok

136cm high by 87cm deep

£350-520

242
A Wilderbeest head mount

78cm deep

£500-800



For details of our buyers premium which is added onto the hammer price together with any other applicable charges and AML requirements, please refer to our guide for prospective buyers



243
A massive set of Red deer
antlers on shield, 12
points

130cm high by 103cm
wide

£800-1,200

245
A massive set of red Deer
antlers on carved shield,
13 points

125cm high by 114cm
wide

£800-1,200

244
A large red deer stag's
head

1891, Weald Park
133cm high by 102cm
wide

£500-800

Online bidding via SummersPlace Live - register through www.summersplaceauctions.com



246
A Sable antelope trophy

20th century
130cm high by 70cm deep

£600-1,000



247
A headmount Bennett's wallaby

47cm high by 31cm deep

£200-340

248
An Uganda kob skull on shield

70cm high

£150-240



For details of our buyers premium which is added onto the hammer price together with any other applicable charges and AML requirements, please refer to our guide for prospective buyers



249
A set of four Ledot of Paris wall cases

French, late 19th century

comprising a brace of woodcock, golden plover, red-legged partridge and thrushes
58cm high

£300-500



250
A Hammerhead fruitbat in flight

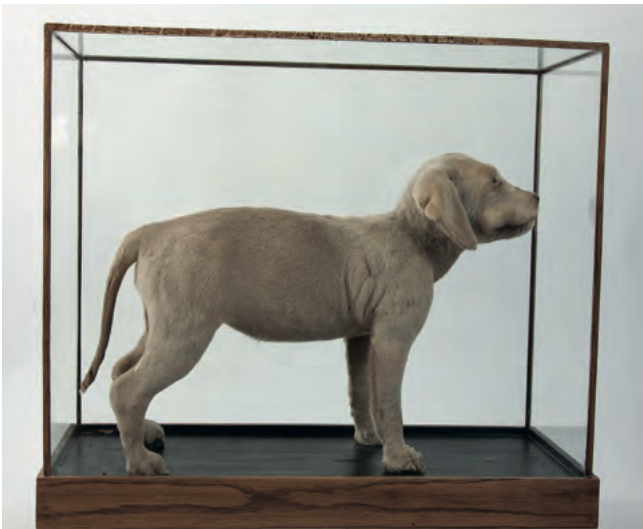
81cm wide

£250-380

251
A puppy in rectangular glass case

recent
46cm high by 56cm wide

£800-1,000



Online bidding via SummersPlace Live - register through www.summersplaceauctions.com



252
A white Rhea chick in glass dome

recent
50cm high

£300-500

For details of our buyers premium which is added onto the hammer price together with any other applicable charges and AML requirements, please refer to our guide for prospective buyers



253
A Silver leafed langur

recent
under glass dome
57cm high

£300-500



254
**A human skull in
Victorian glass dome**

31cm high
£800-1,200

256
A black bear skull

Canada, from native tribes
on metal stand
31cm high by 18cm wide
Import permit
FR1104500346-1

£80-120

255
**An Asmat tribal human
skull from Papua New
Guinea**

50cm high overall
£1,200-1,500

Online bidding via SummersPlace Live - register through www.summersplaceauctions.com



257
A full mount peccary on decorative base

89cm long

£500-700



258
A white puppy in glass dome

22cm high by 29cm wide

£250-380

259
A Beagle puppy on stool

60cm high overall

£400-580



For details of our buyers premium which is added onto the hammer price together with any other applicable charges and AML requirements, please refer to our guide for prospective buyers



260
An elephant foot stool

circa 1920/1930s
(not suitable for export)
52cm high

£500-800

261
**A Tiger skin rug by Van
Ingen**

282cm by 205cm

£2,000-3,000

Online bidding via SummersPlace Live - register through www.summersplaceauctions.com



262
**A Tiger skin rug by Van
Ingen**

circa 1920/30
No. 27745
290cm long by 190cm
wide

£1,800-2,200

263
**A Zebra skin on felt
backing**

370cm long

£500-800



For details of our buyers premium which is added onto the hammer price together with any other applicable charges and AML requirements, please refer to our guide for prospective buyers



264
**A white Peahen on
pedestal mount**

150cm high

£700-900



265
A Vervet monkey

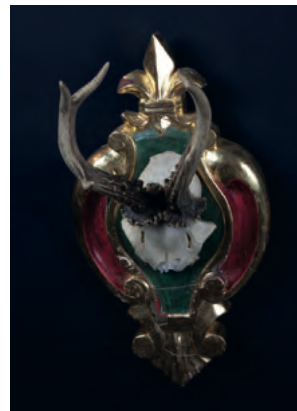
60cm high overall

£400-550

266
**Two Roe deer antlers on
fancy shields**

38cm high

£75-180



Online bidding via SummersPlace Live - register through www.summersplaceauctions.com

Summers Place Auctions Ltd

SALE NUMBER

27042024

BIDS MUST BE RECEIVED BY

27th March, 2024, 4PM BST

IMPORTANT

The winning bid will be the highest left on each lot above the reserve. Bids are non sequential and the highest bid left is the price at which the lot is sold plus buyers premium and any VAT liable. In the event of two identical winning bids being left on the same lot, the earliest received bid shall take precedence. Summers Place Auctions decision on which is the winning bid shall be final.

Clients wishing to bid on an "either or" basis should list the lots they are interested in with the price they are prepared to pay in order of preference with "OR" written between each one.

NEW CLIENTS

Please note that we may contact you to Request a band reference. In addition we Will require sight of a government issued ID and proof of address prior to collection of purchases.

Title _____
 First name _____ Last name _____
 Address _____
 _____ Postcode _____
 Tel _____ Mobile _____
 Email _____ Fax _____

Please write clearly and place your bids as early as possible, as in the event of identical bids, the earliest bid received will take precedence. Bids should be submitted in (£) sterling at least 24 hours before the auction.

SEALED BIDDING FORM

Lot No.	Lot Description	Maximum Sterling price (excluding premium & VAT)

I agree to be bound by Summers Place Auctions Ltd "Condition of Business" as published in the catalogue which govern all purchases at auction, and to pay the published Buyer's Premium on the hammer price plus any applicable taxes.

I consent to the use of this information and any other information obtained by Summers Place Auctions.

I am aware that all telephone bid lines may be recorded.

Payment is due immediately after the sale in pounds sterling. Full details on how to pay are included in our Guide for Buyers. If you wish to pay for your purchases by card please complete the details below any your Card will be charged.

NAME ON CARD.
 DEBIT CARD NUMBER.
 EXPIRY DATE.
 ISSUE NUMBER (SWITCH ONLY). 3 LAST DIGITS OF SECURITY CODE.

Signed _____ **Dated** _____

GUIDE FOR ABSENTEE BIDDERS FOR SEALED BID AUCTION

SEALED BID AUCTION LOTS 100-266

All sealed bids must be with us, at the latest, by 27th Sept, 4.00pm BST since the bids will be opened on the 28th Sept. The winning bid will be the highest left on each lot above the reserve. Bids are non sequential and the highest bid left is the price at which the lot is sold plus buyers premium and any VAT liable. In the event of two identical winning bids being left on the same lot, the earliest received bid shall take precedence. Summers Place Auctions decision on which is the winning bid shall be final. Winning bidders will be invoiced after the bids are opened.

Sealed bids, when placed by telephone, are accepted only at the caller's risk and must be confirmed by letter or e-mail to the Bid Department.

Successful bidders will receive an invoice detailing their purchases and giving instructions for payment and clearance of goods.

All bids are subject to the conditions of business applicable to the sale, a copy of which is available from Summers Place Auctions. Conditions of Business particularly relevant to buyers are also set out in the sale catalogue.

We reserve the right to seek identification of the source of funds received.

In connection with the management and operation of our business and the marketing and supply of Summers Place Auctions Companies' services, or as required by law, we may ask clients to provide personal information about themselves or obtain information about clients from third parties (e.g. credit information). If clients provide Summers Place Auctions with information that is defined by law as "sensitive", they agree that Summers

Place Auctions may use it for the above purposes. Summers Place Auctions will not use or process sensitive information for any other purpose without the client's express consent.

In order to fulfil the services clients have requested, Summers Place Auctions may disclose information to third parties (e.g. shippers). Some countries do not offer equivalent legal protection of personal information to that offered within the EU. It is Summers Place Auctions policy to require that any such third parties respect the privacy and confidentiality of our clients' information and provide the same level of protection for clients' information as provided within the EU, whether or not they are located in a country that offers equivalent legal protection of personal information. By signing this Sealed Bid Form you agree to such disclosure. Clients will please note that for security purposes, Summers Place Auctions premises are subject to video recording. Telephone calls e.g. telephone bidding/voicemail messages may also be recorded.

Please mail up to
27th March, 2024, 4.00pm BST
The Walled Garden, Summers Place,
Billingshurst, West Sussex, RH14 9AB.

For Bids only:
Tel. +44 (0)1403 331 331

Email
sealedbids@summersplaceauctions.com

Online bidding via SummersPlace Live - register through www.summersplaceauctions.com

Sealed bid- How it works

Our sealed bid auctions close at 4.00pm on the day after the live auction, but are on view at the same time and are included in the same catalogue with an illustration, description and estimate. Clients wishing to leave bids should do so in writig or by emailing a signed scanned page detailing lot numbers, brief description and the bid(s) which they wish to leave. All clients should also have registered with us beforehand and provided photographic identification.

Sealed bids, when placed by telephone, are accepted only at the the caller's risk and must be confirmed by letter or e-mail to info@summersplaceauctions.com. You can also e-mail the completed sealed bid form to sealedbids@summersplaceauctions.com

Next give us your bid(s). This can be done by filling in the bidding slip found in your catalogue. If you are sending your bidding slip to Summers Place Auctions by post, please mark the envelope "Sealed Bid" so that we know it contains a sealed bid and do not open it accidentally. Bids and IDs may also be sent by e-mail. If you choose to send the bid electronically please email sealedbids@summersplaceauctions.com. This is a closed mailbox and will not be opened before the advertised time. However, we strongly recommend that if you have not viewed the sale in person, that you ask for condition reports on any lots you are thinking of leaving bids on.

Sealed bid auctions differ from established auctions in that the bid left is the bid that will be exercised in full. Therefore, if you decide to leave a bid of, say, £900 on the lot estimated at £800-1000 and there is no higher bid (where two identical bids are received, the earliest received bid will take precedence), £900 will secure the lot subject to buyer's premium and VAT on the premium.

We will contact you if you have been the successful bidder to inform you of the lot or lots that you have purchased, so that you can make payment and make arrangements for delivery. We have had many years of experience dealing with both UK carriers and international shippers and are happy to obtain quotations and facilitate transport and shipping of single lots and multiple purchases to anywhere in the world.

Bids will be opened on the Thursday following the sale; and sales results will appear on the Summers Place Auctions website. Please be mindful that we will have to process a large number of bids, which does take time. However, we will endeavour to get this accomplished as quickly as possible and will expect to have the results of the sale posted by the end of the day.

If you have never bid in a sealed bid sale before, here are some things to be aware of as regards leaving bids for this auction:

Every lot in the sale has a fixed reserve, (the minimum price for which the lot can be sold) and this is never above the low estimate, it can be slightly below, but in the vast majority of cases it is the low estimate.

The highest bid (as long as it is on or above the reserve) will be the winning bid. This is the 'hammer price' that the lot will be sold for.

You should consider leaving a bid of an odd amount in pounds, for example, rather than bidding £1,000, try say £1,004, as many lots have been bought for the sake of the odd £1!

You can tailor your bid in ways that are impossible to do in a live auction. For example, if you really like three lots, but only need one, and the piece you like the most is later in the sale, simply mark your order of preference. As long as your instructions are clear, having looked at any other bids left on the lots, we will do our best to comply with your preferences.

In the event of two identically highest bids, the earliest bid received will take precedence.

An auction price is made up of different components; the winning bid is called the 'hammer price'; A commission, which is in addition to the 'hammer price' is payable to the auctioneers. This is known as the buyers premium, on which VAT is payable. Lots marked with p are subject to Artist Resale Right (ARR), which is 4% of the "hammer price". All lots that have additional VAT are clearly marked in the catalogue with a †.

SUMMERS PLACE AUCTIONS AUTHENTICITY GUARANTEE

If Summers Place Auctions Ltd sells an item which subsequently is shown to be a “counterfeit”, subject to the terms below Summers Place Auctions Ltd will set aside the sale and refund to the Buyer the total amount paid by the Buyer to Summers Place Auctions Ltd for the item, in the currency of the original sale.

For these purposes, “counterfeit” means a lot that in Summers Place Auctions Ltd reasonable opinion is an imitation created to deceive as to authorship, origin, date, age, period, culture or source, where the correct description of such matters is not reflected by the description in the catalogue (taking into account any Glossary of Terms). No lot shall be considered a counterfeit by reason only of any damage and/or restoration and/or modification work of any kind (including repainting or over-painting).

Please note that this Guarantee does not apply if either:-

- (i) the catalogue description was in accordance with the generally accepted opinion(s) of scholar(s) and expert(s) at the date of the sale, or the catalogue description indicated that there was a conflict of such opinions; or
- (ii) the only method of establishing at the date of the sale that the item was a counterfeit would have been by means of processes not then generally available or accepted, unreasonably expensive or impractical to use; or likely to have caused damage to the lot or likely (in Summers Place Auctions Ltd reasonable opinion) to have caused loss of value to the lot; or
- (iii) there has been no material loss in value of the lot from its value had it been in accordance with its description.

This Guarantee is provided for a period of five (5) years after the date of the relevant auction, is solely for the benefit of the Buyer and may not be transferred to any third party. To be able to claim under this Guarantee, the Buyer must:-

- (i) notify Summers Place Auctions Ltd in writing within three (3) months of receiving any information that causes the Buyer to question the authenticity or attribution of the item, specifying the lot number, date

of the auction at which it was purchased and the reasons why it is thought to be counterfeit; and

- (ii) return the item to Summers Place Auctions Ltd in the same condition as at the date of sale to the Buyer and be able to transfer good title in the item, free from any third party claims arising after the date of the sale.

Summers Place Auctions Ltd has discretion to waive any of the above requirements. Summers Place Auctions Ltd may require the Buyer to obtain at the Buyer's cost the reports of two independent and recognised experts in the field, mutually acceptable to Summers Place Auctions Ltd and the Buyer. Summers Place Auctions Ltd shall not be bound by any reports produced by the Buyer, and reserves the right to seek additional expert advice at its own expense. In the event Summers Place Auctions Ltd decides to rescind the sale under this Guarantee, it may refund to the Buyer the reasonable costs of up to two mutually approved independent expert reports.

GUIDE FOR PROSPECTIVE BUYERS

1. Buyer's Premium Rates

The buyer's premium payable by the buyer of each lot is at a rate of 25% on the first £250,000, then 20% on the amount by which the hammer price exceeds £250,000, plus an amount in respect of VAT thereon (see below).

2. VAT on Hammer Price and Buyer's Premium and VAT Symbols in the Catalogue

Property with no VAT symbol

Where there is no VAT symbol, Summers Place Auctions Ltd are able to use the Auctioneer's Margin Scheme and VAT will not normally be charged on the hammer price. Summers Place Auctions Ltd must bear VAT on the buyer's premium and hence will charge an amount in lieu of VAT at 20% on this premium, which will not be shown separately on the invoice.

Property with a † symbol

These items will be sold under the normal UK VAT rules and VAT will be charged at 20% on both the hammer price and buyer's premium.

Property with a @ symbol

It is assumed that items sold to buyers whose address is in the European Union (EU) will be remaining in the EU. The property will be invoiced as if it had no VAT symbol.

It is assumed that items sold to buyers whose address is outside the EU, will be exported from the EU. The property will be invoiced under the normal VAT rules (see 'Property with a † symbol above).

Property sold with a ‡ or Ω symbol

These items have been imported to be sold at auction under temporary importation. When Summers Place Auctions Ltd release such property to buyers in the UK, the buyer will become the importer and must pay Summers Place Auctions Ltd import VAT at the following rates on the hammer price:

‡ @ 5% Ω @ 20%

Summers Place Auctions Ltd must bear VAT on the buyer's premium and hence will charge an amount in lieu of VAT at 20% on this premium, which will not be shown separately on the invoice.

VAT Refunds

VAT may be cancelled or refunded on export if strict conditions are met and a fee of £30 plus VAT will be charged for this service. For advice, please contact us on 01403 331 331

Sales and Uses Taxes

Buyers from outside the UK should note that local sales taxes or use taxes may become payable upon import of items following purchase (for example, the Use Tax payable on import of purchased items to certain states of the USA). Buyers should obtain their own advice in this regard.

Artist's Resale Right

Purchase of lots marked with the following symbol p will be subject to payment of the Artist's Resale Right, at a percentage of the hammer price calculated as follows:

Portion of the hammer price (in) Royalty Rate

From 0 to 50,000 4%

From 50,000.01 to 200,000 3%

From 200,000.01 to 350,000 1%

From 350,000.01 to 500,000 0.5%

Exceeding 500,000 0.25%

The Artist's Resale Right payable will be the aggregate of the amounts payable under the above rate bands, subject to a maximum royalty payable of 12,500 for any single work each time it is sold. The maximum royalty payable of 12,500 applies to works sold for 2 million and above. Calculation of the artist's resale right will be based on the Pounds Sterling / Euro reference exchange rate quoted on the date of the sale by the European Central Bank.

Property with a symbol.

Some of these items require specialist dismantling and may not be available for immediate collection after the sale. Intending purchasers should check the status of these lots before the sale.

3. Before the Auction

Pre-sale Estimates

Pre-sale estimates are intended as a guide for prospective buyers but all lots can realise prices above or below the pre-sale estimates. Seller's confidential reserves are set no higher than the low pre-sale estimates, except in the rare circumstance in which the reserve has been set in a foreign currency and the exchange rate has fluctuated.

It is advisable to consult us nearer the time of sale as estimates can be subject to revision. The estimates printed in the auction catalogue do not include the buyer's premium or VAT.

Provenance

In certain circumstances, Summers Place Auctions Ltd may print in the catalogue the history of ownership of a work of art if such information contributes to scholarship or is otherwise well known and assists in distinguishing the work of art. However, the identity of the seller or previous owners may not be disclosed for a variety of reasons. For example, such information may be excluded to accommodate a seller's request for confidentiality or because the identity of prior owners is unknown given the age of the work of art.

C.I.T.E.S.

All the relevant lots in this sale have been carefully vetted, mindful of current C.I.T.E.S. regulations, concerning the sale of endangered species. We are happy to provide advice on any lots, to overseas buyers concerning export restrictions. However, it is ultimately the buyers responsibility to satisfy themselves that the correct licenses can be obtained prior to bidding.

Condition of Lots

All lots are available for inspection and Condition Reports are available on request. However, all lots are of an age and type which means that they may not be in perfect condition and should be viewed by prospective bidders; please refer to Condition 3 of the Conditions of Business for Buyers.

Electrical and Mechanical Goods

All electrical and mechanical goods are sold on the basis of their artistic and decorative value only, and should not be assumed to be operative. It is essential that any electrical system is checked and approved by a suitably qualified electrician, prior to use.

4. The Auction

Auction speeds vary, and generally average between 50 and 120 lots per hour. The auctioneer will commence and advance the bidding at levels and in increments he considers appropriate (generally in increments of approximately 10% of the previous bid) and is entitled to place a bid or series of bids on behalf of the seller up to the reserve on the lots, without indicating he is doing so and whether or not other bids are placed.

Please note Conditions 5 and 6 of the Conditions of Business for Buyers contain additional information on bidding.

Bidding in Person

To bid at auction you must register with us to obtain a bidding number. Before the auction, fill in the form at the registration desk, provide proof of identity, and you may be given a paddle showing your bidding number. This paddle should be used for bidding. The auctioneer will note this number when you purchase a lot.

Live Auctions

The auction takes place in the gallery with each lot displayed on a plasma screen as it is sold. Prospective purchasers are encouraged to attend the sale and must register their details with us beforehand. Bidding is by numbered paddle.

Absentee Bids

If you cannot attend the auction we will be happy to execute written bids on your behalf, so long as you have registered your details with us beforehand and are compliant with AML regulations. A bidding form is printed in the back of the catalogue. This service is confidential. Lots will always be bought as cheaply as is consistent with other bids, the reserves and other commission bids. To avoid confusion, the sale date, lot number and a brief description should be filled in and signed. Commission bids by email without a signature will not be accepted. In the event of identical bids, the earliest received will take precedence. Always indicate a top limit, i.e. the highest price you would bid if you were attending the auction. Don't forget that buyers premium and any VAT applicable will also be added onto your bid if you are successful. "Buy" and unlimited bids will not be accepted. Please refer to our conditions of business for buyers, which is also printed in the back of our catalogues. To ensure a satisfactory service please ensure that we receive your bids at least 24 hours beforehand.

Telephone bids

If you cannot attend the auction, it is usually possible to bid on the telephone. You will need to have registered your details with us 5 days before the auction. As the number of telephones is limited, it is necessary to make arrangements on which lots you wish to bid on, at least 24 hours before the sale. We also suggest that you leave a maximum bid which we can execute on your behalf in the event we are unable to reach you by telephone. Please refer to our conditions of business for buyers, which is also printed in the back of our catalogues.

Online Bidding (SummersPlace Live - no surcharge)

If you cannot attend the auction, you may wish to bid using the.saleroom.com, which will incur an additional 5% of the hammer price plus VAT at the rate imposed or use our own platform **SummersPlace Live**

Sealed bid

For further information please see pages at the end of this section.

Sale by private treaty

Summers Place Auctions shall, from time to time, be offering some lots for sale by Private Treaty in our architectural portfolio. These will usually comprise larger pieces of an architectural nature, which will require a longer period of planning and consultation than an auction can provide. Additionally if you are looking for a specific piece please let us know and we will use our worldwide network of trade and private clients to help source the most suitable item for you. Please contact us for further information.

Payment

Payment is due in sterling immediately after the sale and before purchases can be released. Payments in person can be made in the saleroom on the day of the auction using mobile banking. All payments must be by electronic transfer to our bank. Cash will not be accepted.

Wire transfers can be made directly to our bank. Please contact us for further details. Sterling Banker's Drafts and Building Society Cheques drawn on a recognised UK bank or building society are also accepted.

Credit/Debit Card

Regrettably we are no longer able to accept credit or debit cards

Collection and Storage

On receipt of cleared funds, lots can be collected from the Walled Garden, Stane Street, Billingshurst, West Sussex, RH14 9AB, Monday to Friday between 9.30am and 12.30pm and 2.00pm and 4.00pm. **Collection of lots is strictly by prior appointment and must be arranged at least 48hours in advance.** If Lots have not been collected within 35 days of the auction date then storage charges may be applied at a rate of £10 per Lot per day. Buyers are reminded that liability for loss and damage transfers to the buyer from the fall of the hammer. Whilst the majority of lots will remain in their location until collected, Summers Place Auctions accept no responsibility for any damage which may occur, even in the event of Summers Place Auction staff assisting carriers during collection.

Summers Place Auctions also reserves the right to charge

storage fees of £10.00 per lot, per week, for any pieces left at Summers Place over a longer period than six months irrespective of whether they have been entered into a sale or not.

Shipping

We are happy to arrange shipping quotations and have extensive experience in working in conjunction with leading domestic and international shippers. There is no charge for arranging quotations.

CONDITIONS OF BUSINESS FOR BUYERS

1. INTRODUCTION

(a) The contractual relationship of Summers Place Auctions Ltd and Sellers with prospective Buyers is governed by:-

- (i) these Conditions of Business for Buyers;
- (ii) the Conditions of Business for Sellers displayed in the saleroom and available from Summers Place Auctions Ltd
- (iii) Summers Place Auctions Ltd 's Authenticity Guarantee; (iv) any additional notices and terms printed in the sale catalogue, in each case as amended by any saleroom notice or auctioneer's announcement.

(b) As auctioneer, Summers Place Auctions Ltd acts as agent for the Seller. Occasionally, Summers Place Auctions Ltd may own or have a financial interest in a lot.

2. DEFINITIONS

"Bidder" is any person making, attempting or considering making a bid, including Buyers;

"Buyer" is the person who makes the highest bid or offer accepted by the auctioneer, including a Buyer's principal when bidding as agent;

"Seller" is the person offering a lot for sale, including their agent, or executors;

"Buyer's Expenses" are any costs or expenses due to Summers Place Auctions Ltd from the Buyer;

“Buyer’s Premium” is the commission payable by the Buyer on the Hammer Price or winning sealed bid price at the rates set out in the Guide for Prospective Buyers;

“Hammer Price” is the highest bid for the Property accepted by the auctioneer at the auction or the post auction sale price; “Purchase Price” is the Hammer Price plus applicable Buyer’s Premium and Buyer’s Expenses;

“Reserve Price” (where applicable) is the minimum Hammer Price at which the Seller has agreed to sell a lot.

The Buyer’s Premium, Buyer’s Expenses and Hammer Price are subject to VAT, where applicable.

3. EXAMINATION OF LOTS

(a) Summers Place Auctions Ltd knowledge of lots is partly dependent on information provided by the Seller and Summers Place Auctions Ltd is unable to exercise exhaustive due diligence on each lot. Each lot is available for examination before sale. Bidders are responsible for carrying out examinations and research before sale to satisfy themselves over the condition of lots and accuracy of descriptions.

(b) All oral and/or written information provided to Bidders relating to lots, including descriptions in the catalogue, condition reports or elsewhere are statements of Summers Place Auctions Ltd opinion and not representations of fact. Estimates may not be relied on as a prediction of the selling price or value of the lot and may be revised from time to time at Summers Place Auctions Ltd absolute discretion.

4. EXCLUSIONS AND LIMITATIONS OF LIABILITY TO BUYERS (a) Summers Place Auctions Ltd shall refund the Purchase Price to the Buyer in circumstances where it deems that the lot is a Counterfeit, subject to the terms of Summers Place Auctions Ltd Authenticity Guarantee.

(b) Subject to Condition 4(a), neither Summers Place Auctions Ltd nor the Seller:-

(i) is liable for any errors or omissions in any oral or written information provided to Bidders by Summers Place Auctions Ltd, whether negligent or otherwise;

(ii) gives any guarantee or warranty to Bidders and any implied warranties and conditions are excluded (save in so far as such obligations cannot be excluded by English law), other than the express warranties given

by the Seller to the Buyer (for which the Seller is solely responsible) under the Conditions of Business for Sellers;

(iii) accepts responsibility to Bidders for acts or omissions (whether negligent or otherwise) by Summers Place Auctions Ltd in connection with the conduct of auctions or for any matter relating to the sale of any lot.

(c) Without prejudice to Condition 4(b), any claim against Summers Place Auctions Ltd and/or the Seller by a Bidder is limited to the Purchase Price for the relevant lot. Neither Summers Place Auctions Ltd nor the Seller shall be liable for any indirect or consequential losses.

(d) Nothing in Condition 4 shall exclude or limit the liability of Summers Place Auctions Ltd or the Seller for death or personal injury caused by the negligent acts or omissions of Summers Place Auctions Ltd or the Seller.

5. BIDDING AT AUCTION

(a) Summers Place Auctions Ltd has absolute discretion to refuse admission to the auction. Before sale, Bidders must complete a Registration Form and supply such information and references as Summers Place Auctions Ltd requires. Bidders are personally liable for their bid and are jointly and severally liable with their principal, if bidding as agent (in which case Summers Place Auctions Ltd’s prior and express consent must be obtained).

(b) Summers Place Auctions Ltd advises Bidders to attend the auction, but Summers Place Auctions Ltd will endeavour to execute absentee written bids provided that they are, in Summers Place Auctions Ltd’s opinion, received in sufficient time and in legible form.

(c) When available, written and telephone bidding is offered as a free service at the Bidder’s risk and subject to Summers Place Auctions Ltd’s other commitments; Summers Place Auctions Ltd is therefore not liable for failure to execute such bids. Telephone bidding may be recorded.

6. IMPORT, EXPORT AND COPYRIGHT RESTRICTIONS Summers Place Auctions Ltd and the Seller make no representations or warranties as to whether any lot is subject to import, export or copyright restrictions. It is the Buyer’s sole responsibility to obtain any copyright clearance or any necessary import, export or other licence required by law, including licenses required blaw under the International Trade in Endangered Species (CITES).

7. CONDUCT OF THE AUCTION

(a) The auctioneer has discretion to refuse bids, withdraw or re-offer lots for sale (including after the fall of the hammer) if (s)he believes that there may be an error or dispute, and may also take such other action as (s)he reasonably deems necessary. (b) The auctioneer will commence and advance the bidding in such increments as (s)he considers appropriate and is entitled to place bids on the Seller's behalf up to the Reserve Price for the lot, where applicable.

(c) Subject to Condition 7(a), the contract between the Buyer and the Seller is concluded on the striking of the auctioneer's hammer.

(d) Any post-auction sale of lots shall incorporate these Conditions of Business.

8. PAYMENT AND COLLECTION

(a) Unless otherwise agreed in advance, payment of the Purchase Price is due in pounds sterling immediately after the auction (the "Payment Date").

(b) Title in a lot will not pass to the Buyer until Summers Place Auctions Ltd has received the Purchase Price in cleared funds. Summers Place Auctions Ltd will not release a lot to a Buyer before payment.

(c) The refusal of any licence or permit required by law, as outlined in Condition 6, shall not affect the Buyer's obligation to pay for the lot, as per Condition 8(a).

(d) The Buyer must arrange collection of lots within 35 working days of the auction. Purchased lots are at the Buyer's risk from the fall of the hammer.

(e) All packing and handling of lots is at the Buyer's risk. Summers Place Auctions Ltd will not be liable for any acts or omissions of third party removers or shippers.

9. REMEDIES FOR NON-PAYMENT

Without prejudice to any rights that the Seller may have, if the Buyer without prior agreement fails to make payment for the lot within 5 working days of the auction, Summers Place Auctions Ltd may in its sole discretion exercise one or more of the following remedies:-

(a) store the lot at its premises or elsewhere at the Buyer's sole risk and expense;

(b) cancel the sale of the lot;

(c) set off any amounts owed to the Buyer by Summers Place Auctions Ltd against any amounts owed to Summers Place Auctions Ltd by the Buyer for the lot;

(d) reject future bids from the Buyer;

(e) charge interest at 4% per annum above NatWest Bank Base Rate from the

Payment Date to the date that the Purchase Price is received in cleared funds;

(f) re-sell the lot by auction or privately, with estimates and reserves at Summers Place Auction Ltd.'s discretion, in which case the Buyer will be liable for any shortfall between the original Purchase Price and the amount achieved on re-sale, including all costs incurred in such re-sale;

(g) Exercise a lien over any Buyer's Property in Summers Place Auctions Ltd's possession, applying the sale proceeds to any amounts owed by the Buyer to Summers Place Auctions Ltd. Summers Place Auctions Ltd shall give the Buyer 14 days written notice before exercising such lien;

(h) commence legal proceedings to recover the Purchase Price for the lot, plus interest and legal costs;

(i) disclose the Buyer's details to the Seller to enable the Seller to commence legal proceedings.

10. FAILURE TO COLLECT PURCHASES

(a) If the Buyer pays the Purchase Price but does not collect the lot within 35 days of the auction, the lot will be stored at the Buyer's expense and risk at Summers Place Auctions Ltd's premises or in independent storage.

(b) If a lot is paid for but uncollected within 6 months of the auction, following 60 days written notice to the Buyer, Summers Place Auctions Ltd will re-sell the lot by auction or privately, with estimates and reserves at Summers Place Auctions Ltd's discretion. The sale proceeds, less all Summers Place Auctions Ltd's costs, will be forfeited unless collected by the Buyer within 2 years of the original auction.

11. DATA PROTECTION

(a) Summers Place Auctions Ltd will use information supplied by Bidders or otherwise obtained lawfully by Summers Place Auctions Ltd for the provision of auction related services, client administration, marketing and as otherwise required by law.

(b) By agreeing to these Conditions of Business, the Bidder agrees to the processing of their personal information and to the disclosure of such information to third parties world-wide for the purposes outlined in Condition 11(a) and to Sellers as per Condition 9(i).

12. MISCELLANEOUS

(a) All images of lots, catalogue descriptions and all other materials produced by Summers Place Auctions Ltd are the copyright of Summers Place Auctions Ltd.

(b) These Conditions of Business are not assignable by any Buyer without Summers Place Auctions Ltd's prior written consent, but are binding on Bidders' successors, assigns and representatives.

(c) The materials listed in Condition 1(a) set out the entire agreement between the parties.

(d) If any part of these Conditions of Business be held unenforceable, the remaining parts shall remain in full force and effect.

(e) These Conditions of Business shall be interpreted in accordance with English Law, under the exclusive jurisdiction of the

English Courts, in favour of Summers Place Auctions Ltd.

GLOSSARY OF TERMS

The following are examples of the terminology used in this catalogue. Any statement as to authorship, attribution, origin, date, age provenance and condition is a statement of opinion and is not to be taken as a statement of fact.

Please read carefully the terms of the Authenticity Guarantee and the Conditions of Business for Buyers set out in this catalogue.

Antonio Canova

In our opinion a work by the artist. In the case of 19th century sculpture this indicates that the work was made in our opinion either by the artist or by a foundry or editor who had the rights to reproduce the artist's original model either during the artist's lifetime or for a defined posthumous period. (When the artist's forenames are not known, a series of asterisks, followed by the surname of the artist, whether preceded by an initial or not indicates that in our opinion the work is by the artist named).

Attributed to Antonio Canova

In our opinion probably a work by the artist but less certainty as to authorship is expressed than in the preceding category.

Manner of Antonio Canova

In our opinion a work in the style of the artist and of a later date

After Antonio Canova

In our opinion a copy at a later date of a known work by the artist. In the 19th century this indicates that in our opinion the work was made by a foundry or editor at a later date and apparently without exclusive rights.

Italian 18th century

In our opinion a work from that region and of that date.

Probably Italian 18th century

In our opinion a work that is likely to be from that region and/or of that date but less certainty as to the region and/or date than is expressed in the preceding category.

In renaissance style

In our opinion a work executed in the style of the renaissance but not necessarily of that period.

The term signed and/or dated and/or inscribed means that in our opinion the signature and/or date and/or inscription are original to the model or authorized by the sculptor's studio or editor but not necessarily from the hand of the artist.

The term bearing the signature and/or date and/or inscription means that in our opinion the signature and/or date and/or inscription have been added at a later date.

Dimensions are given height before width

Condition of lots

Condition is only noted in the catalogue where an item is severely distressed. Prospective purchasers making commission bids without viewing the sale can be given condition reports on any lot on request.

It is essential for buyers to satisfy themselves as to the condition of lots prior to the sale and to arrange their own insurance cover against loss and damage immediately after the sale. Please refer to the Conditions of Business for Buyers.

Sp
SUMMERS PLACE
AUCTIONS



THE WALLED GARDEN
SUMMERS PLACE
BILLINGSHURST
WEST SUSSEX
RH14 9AB
+44(0)1403 331 331

www.summersplaceauctions.com