

The Pedestal

FINE & DECORATIVE INTERIORS
Including Jewellery & Collectables



Tuesday 9 July at 1pm

The Dairy, Stonor Park, Henley-on-Thames, Oxfordshire RG9 6HF

The Pedestal

Fine & Decorative Interiors
Including Jewellery & Collectables

Tuesday 9 July at 1pm

Sale number: 090724

The Dairy
Stonor Park
Henley-on-Thames
Oxfordshire RG9 6HF

020 7281 2790
info@thepedestal.com

www.thepedestal.com

Viewing at The Dairy
Friday 5 July 10am–4pm
Monday 8 July 10am–4pm
Tuesday 9 July 10am–12noon

Front cover: Lot 239 / Back cover: Lot 193

The Pedestal
Live
the saleroom
The home of art & antiques auctions



Company no: 10159639
VAT no: 244 7137 09

Specialists

Guy Savill

guy@thepedestal.com

Sally Stratton MRICS

sally@thepedestal.com

Client Manager

Jackie Brown

info@thepedestal.com

accounts@thepedestal.com

IMPORTANT INFORMATION LIVE BIDDING

Please go to auctions.thepedestal.com to bid live on our website.

You will need to create a new account to use The Pedestal Live. Once created, it will give you access to live bidding

facilities both from your desktop and through our App

The Pedestal Live is powered by Auction Mobility and is

available for both Apple and Android mobile devices. To

browse catalogues, leave absentee bids and bid live in all

auctions from your device, download the free App from

the App store (for Apple devices) and Google Play (for

Android devices).

There is a 3% plus VAT additional live bidding fee applied for this service.

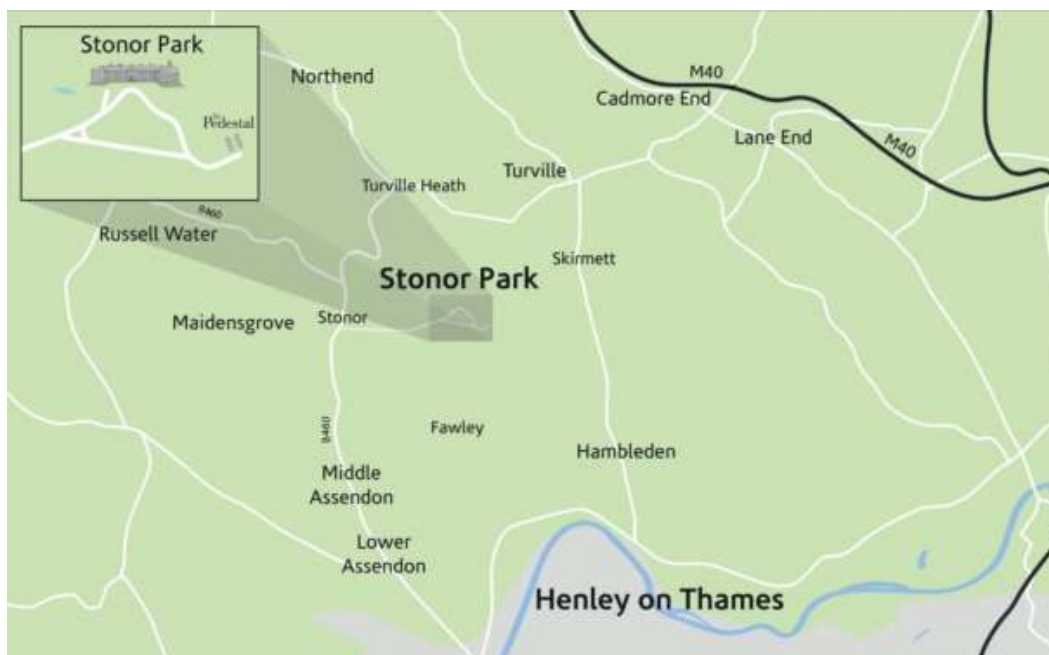
Alternatively, live bidding for this auction is also available through thesaleroom.com and easyliveauction.com where additional charges apply.

BUYERS PREMIUM AND CHARGES

A successful bidder at this sale will be required to pay The Pedestal Ltd (The Pedestal) a premium calculated as follows:

25% plus VAT on the hammer price of each lot.

PLEASE SEE POST SALE COLLECTIONS
INFORMATION ON THE NEXT PAGE



Location

The Dairy is located between the M4 and the M40 (J6) on the B480 Henley-on-Thames – Watlington Road. On entering the Stonor Park Estate, through the main gates, keep to the right as the driveway divides, once you reach the parking area The Dairy is on the left. Stonor is a 10 minute drive North of Henley, an hour from London, 40 minutes from Oxford and Heathrow, and 30 minutes from Reading. The nearest railway station is Henley-on-Thames and taxis are available from the station.

PLEASE NOTE:

Lots subject to CITES regulations are marked with this symbol: ¥

Lots subject to the Artists Resale Rights Regulations 2006 (ARR) are marked with AR. For more information on ARR and the fees to be paid go to clause 22 in the Purchasers Terms & Conditions at the back of the catalogue.

VAT will not be charged on the buyer's premium payable on lots 2-15 inclusive.

Post Sale Collections & Storage

All auction purchases should be collected within 7 days of auction from: The Dairy, Stonor Park, Henley-on-Thames, Oxfordshire, RG9 6HF.

Collection of lots is by appointment only, booked in advance and between the hours of 10am-4pm. Access is restricted to vehicles under 7.5 tonnes.

Goods not collected within the 7 day period may be subject to an admin. charge of £10, plus storage of £3/day for small items/paintings and £6/day for furniture/larger pictures/objects.

Please contact us if you need assistance with transport or cannot make collection within the 7 day period. We reserve the right to send lots not collected in a timely manner to third party storage, the fees for which will be passed to the purchaser.

Loss and Damage : Full value protection cover to the value of the hammer price is charged at 0.6%, not to exceed the total value of all other transfer and storage charges. VAT: will be applied at the current rate on all charges levied.

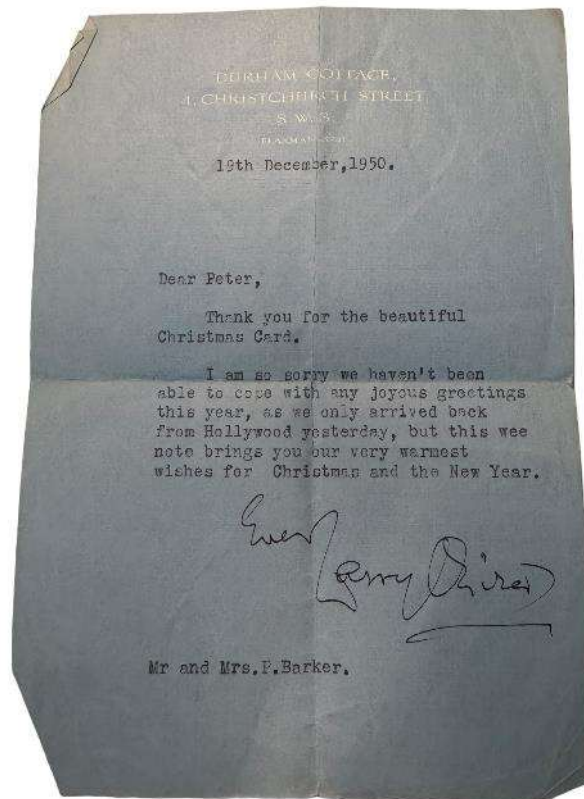
1

Laurence Olivier (1907-1989), Baron Olivier OM

A type written autograph letter to Peter Parker, on headed paper from Durham Cottage, 4 Christchurch Street, SW3, dated 19th December 1950 'Dear Peter, Thank you for the beautiful Christmas Card. I am so sorry that we haven't been able to cope with any joyous greetings this year, as we only arrived back from Hollywood yesterday, but this weeks note brings you our warmest wishes for Christmas and the New Year. Ever, Larry Olivier', together with a Christmas card from The Old Vic Theatre Company decorated with a printed map titled 'All the Worlds a Stage... An Exact Map of the Proud Peregrinations of The Old Vic Theatre Company, Seasons 1944-1948, signed in Olivier's hand 'From Vivien and Laurence Olivier', together with a handbill for The Old Vic Theatre Company, Third Season 1946-1947 Repertory.

£200-£300

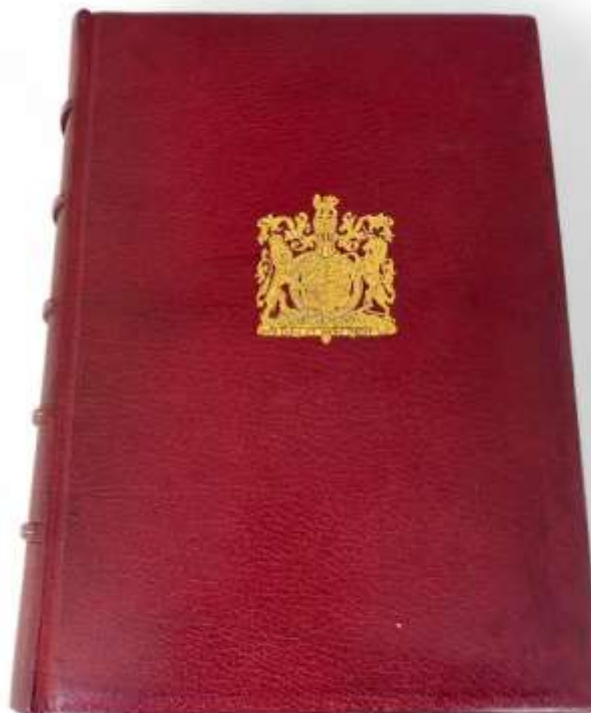
Provenance: Peter Barker (1915-2012) General Manager of the Old Vic and thence by descent.

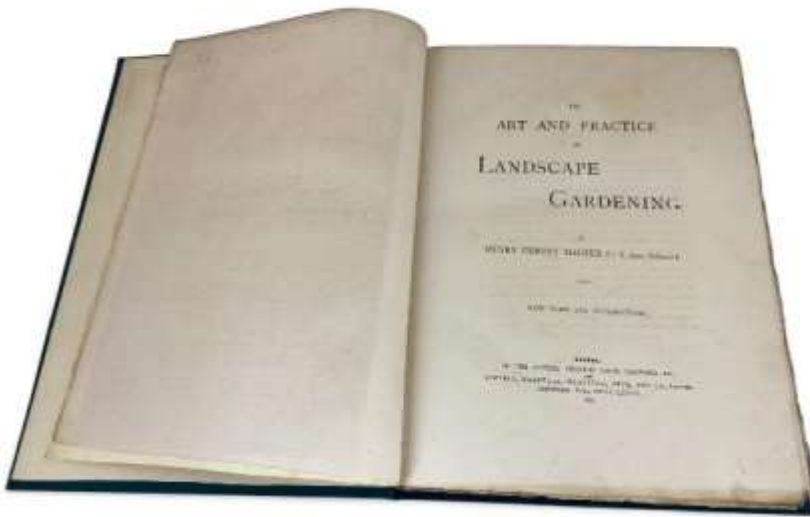


2

Sir John Wilson: The Royal Philatelic Collection, full leather bound, folio, 1952

£80-£120





3
Milner, Ernest Henry: The Art and Practice of Landscape Gardening, 1890

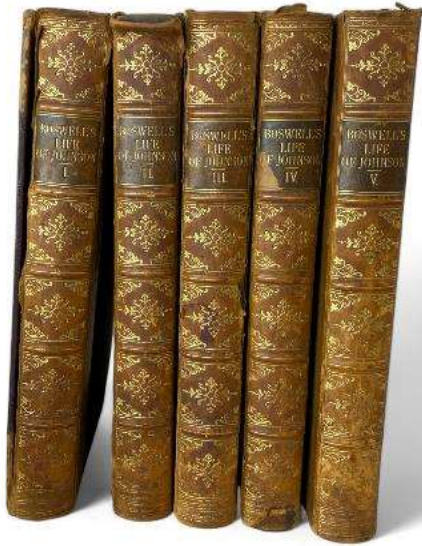
£60-£80

4
A group of various operatic scores all identically leather bound octavo edition, monogrammed DR and with a coronet, Novello, Ewer & Co, London

Comprising of Massenet, 'Manon', Meyerbeer, 'Gli Ugonotti' and 'Roberto Il Diavolo', Massenet, 'Erodiade' and Boito, 'Erodiade', Wagner, 'Lohengrin' and Beethoven, 'Fidelio', Gounod, 'Faust' and 'Mirella', Verdi, 'Otello' and 'Aida', Rossini, 'Guglielmo Tell', Rossini, 'Barbiere Di Siviglia' and 'Nemiramide', Verdi, 'La Traviata', 'Il Trovatore' and 'Rigoletto', Margheriti 'Ruy Blas', Bellini, 'La Sonnambula' and Gluck, 'Orfeo Ed Euridice', Gounod, 'RomŽo et Juliette' and MassŽ, 'Paul et Virginie', Wagner, 'TannhŠuser', Mozart, 'Don Giovanni' and 'Le Nozze di Figaro'. (13)

£120-£180



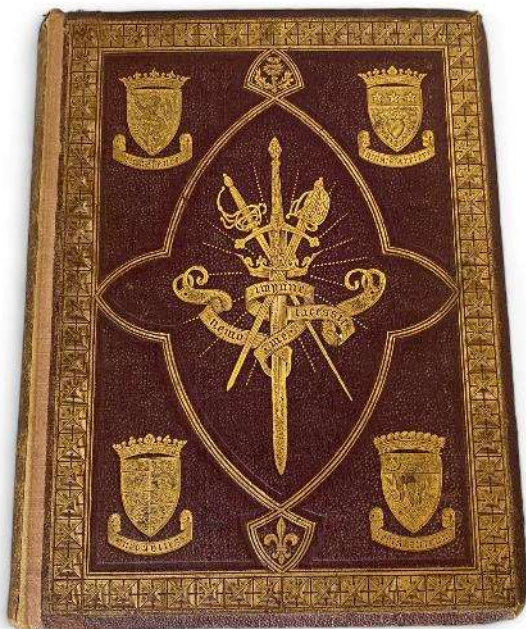
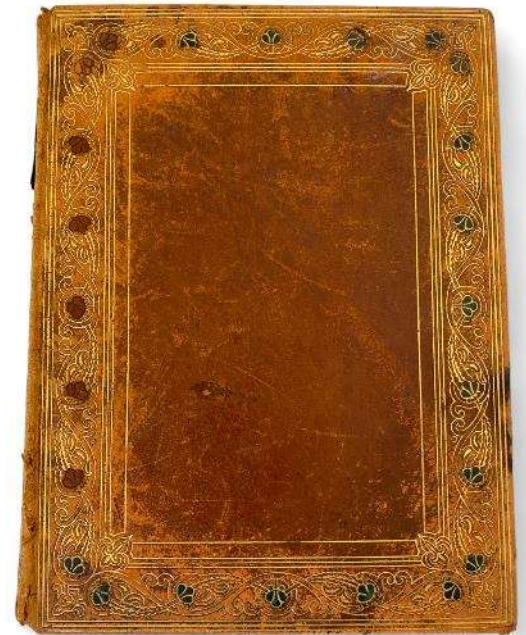


5
J. Boswell, 'Boswell's Life of Johnson and Tour to the Hebrides', The Sir Joshua Reynolds Edition, Routledge, 1885, Limited Edition 85/500 (5 Vols) (5)

£30-£50

6
Omar Khayyám, Rubáiyát of Omar Khayyám, illustrated by Willy Pogáng, Harrap, London, 1930

£30-£50



7
W. Edmondstoune Aytoun, D.C.L., 'Lays of the Scottish Cavaliers and Other Poems', illustrated by J. N & W.H. Paton, Blackwood and Sons, 1863

£20-£30

8

H.Newbolt, 'Drake's Drum and other Songs of the Sea', illustrated by A.D McCormick, R.I, Hodder and Stoughton, R.Fyleman, 'The Rose Fyleman Fairy Book', Methuen, 1923, R. Browning, 'The Pied Piper of Hamelin, illustrated by Kate Greenaway, Routledge, W.S Gilbert and A. Sullivan, 'Songs of the Savoyards', Routledge, second edition, A. Long, 'The Blue Fairy Book', illustrated by Ben Kutcher (1956)

(4)

£30-£50



9

R. Wagner, 'The Rheingold and the Valkyrie', 'Siegfried and the Twilight of the Gods', and De la Motte FouquŽ, 'Undine', Heinemann, London 1910, 1911 and 1909, all illustrated by Arthur Rackham (3)

£100-£150



10

T. Ingoldsby, 'The Ingoldsby Legends' illustrated by Arthur Rackham, J.M Dent, London, 1907, together with Arthur Rackham A.W. Pollard, 'The Romance of King Arthur' illustrated by Rackham, Macmillan, London, 1917 (2)

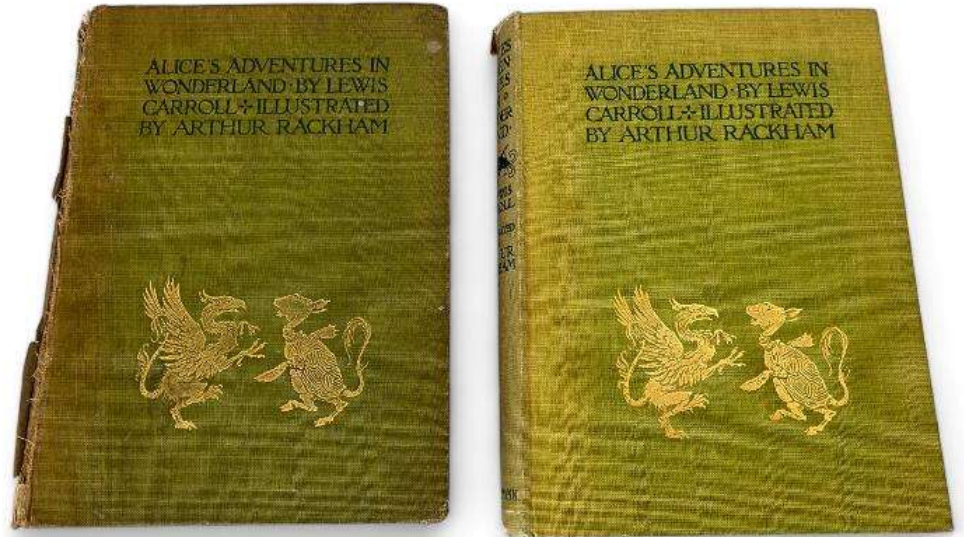
£150-£200



11

Two copies of Lewis Carroll 'Alice's Adventures in Wonderland' illustrated by Arthur Rackham, William Heinemann, London One lacking spine. (2)

£80-£120



12

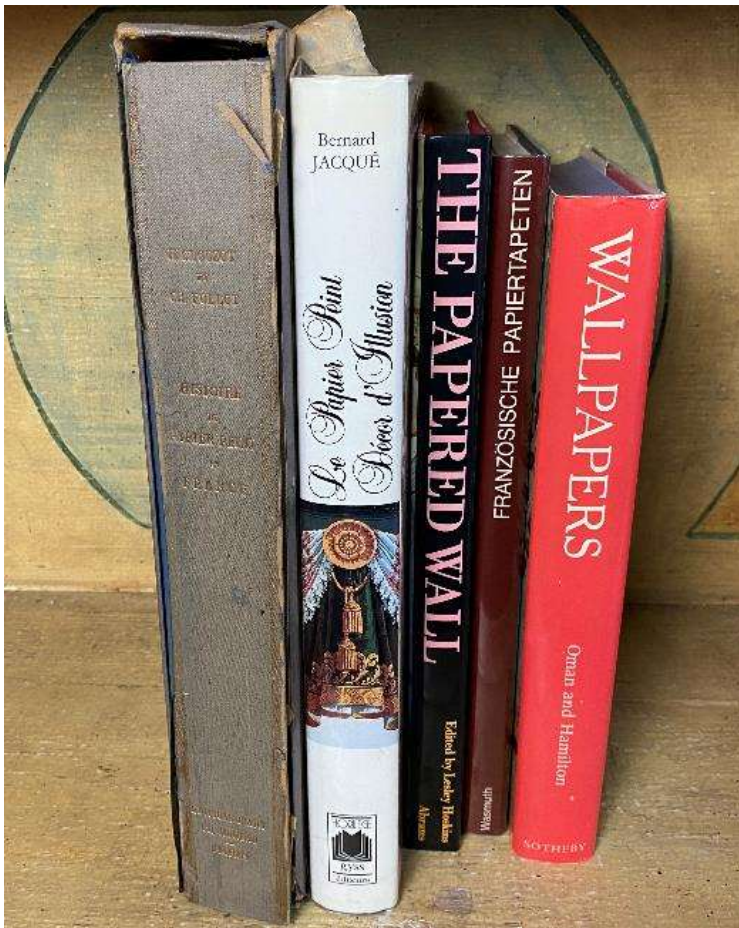
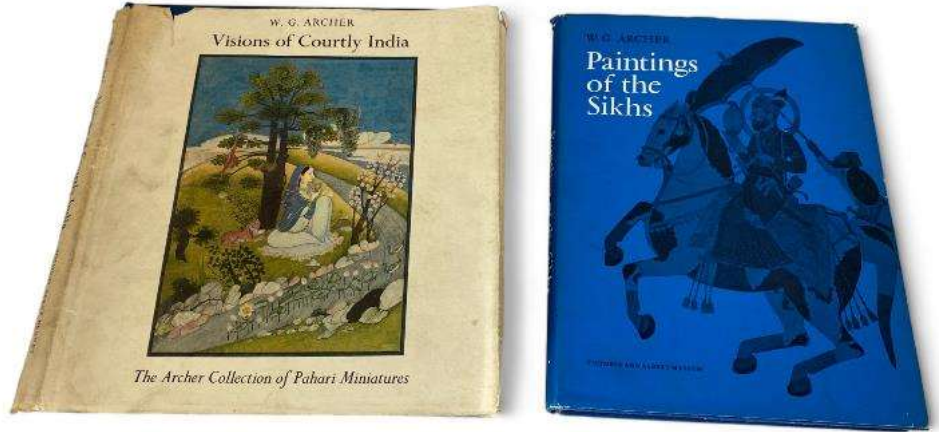
J.M Barrie, 'Peter Pan', illustrated by Arthur Rackham, Hodder & Stoughton, 'The Plays of J.M Barrie', Hodder and Stoughton, London, 1928, Kenneth Graham, 'Wind in the Willows' illustrated by Rackham, Methuen & Co, London 1950. (3)

£60-£80

13

Archer, W. G. Paintings of the Sikhs, Victoria & Albert Museum, London, 1966 and Visions of Courtly India : The Archer Collection of Pahari Miniatures, International Exhibitions Foundation, 1976 (2)

£120-£180

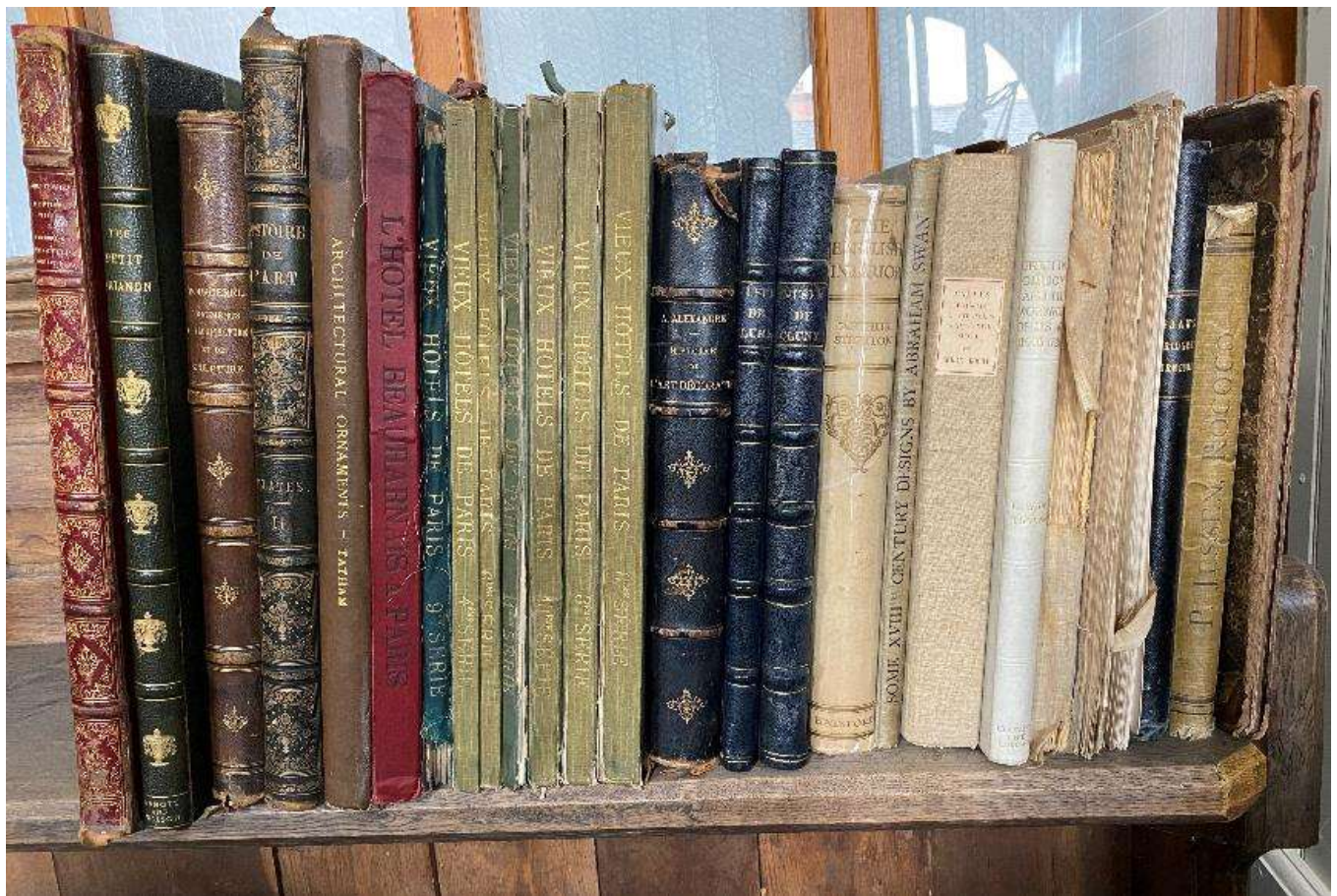


14

Art Reference Books – Wallpapers

Clouzot H. and Ch. Follot. Jean Bourguignon preface Histoire de Papier Peint en France, Illustrated with bright colour tipped-in plates, In Slipcase, 1935, Hoskins, Lesley The Papered Wall: The History, Patterns and Techniques of Wallpaper, 1994 Bernard Jacque Le Papier Peint, Décor d'Illusion 1989 19 89 15 5 4 Nouvel, Odile Französische Papiertapeten 1800-1850, 1981 Oman, Charles.C. and Hamilton, Jean Wallpapers: A History and Illustrated Catalogue of the Collection of the Victoria and Albert Museum, 1982 (5)

£30-£50



15

Grand Tour & Art related books: A collection of Plate Volumes

Tessier, Louis Mobilier Tisse a la Manufacture des Gobelins sous le Regne de Louis XVI, 19th century

Tatham, Charles Heathcote Etchings, Representing The Best Examples of Grecian and Roman Architectural Ornament Drawn from the Originals and Chiefly Collected in Italy 1826

Histoire de l'Art, 19th century Armand Guerinet Monographie du Musee de Cluny, 1re Partie - Meubles et Bois Sculptes; 2e Partie - Pierre Sculpte, Fer forge; 3e Partie - Faïences, Porcelaines, Terre cuites, etc. Epoques: Gothique, Renaissance, Louis XIII a Louis XVI (3 Volumes bound in 2), circa 1900

Alexandre, Arsene Histoire de l'Art Decoratif du XVI Siecle a nos Jours, circa 1890's Bridgens, R [Shaw, Henry, illus) Furniture with candelabra and interior decoration designed by R. Bridgens, 60 hand-coloured plates, 1838

Bougerel, G Fragments d'Architecture et de Sculpture, 1863

Arnott, James A & Wison, John The Petit Trianon Versailles, 1908

Le Style Empire, L'Hotel Beauharnais, Palais de L'Ambassade D'Allemagne. Folio circa 1919

Roche, Serge Cadres Francais et Etrangers du Xve au XVIIIe Siecle, 1931 Denon, Vivant Voyage dans la Basse et Haute Egypte: Plate volume, numerous plates, including maps of Lower & Upper Egypt, frontispice missing (incomplete), circa 1803

Tipping, Avray Grinling Gibbons and The Woodwork of His Age, 1914 Stratton, Arthur The English Interior, A Review of the Decoration of English Homes from Tudor Times to the XIXth Century, circa 1920's

Stratton, Arthur Some XVIIIth Century designs for interior decoration, with details selected from the published works of Abraham Swan, circa 1920's

Jessen, Peter Das Ornament des Rococo und seine Vorstufen, 1894

Audsley, W et G La Peinture Murale Decorative dans le Style du Moyen Age. Folio, 1881

Blondel, Jacques Francois Interieurs d'appartements. Styles Louis XIV, Louis XV, Louis XVI. Folio, circa 1900

Keim, Albert La Decoration et le Mobilier a l'epoque Romantique et sous le Second Empire. Folio, circa 1900

Vacquier, J Vieux Hotels de Paris, Decorations Exterieures et Interieures, 7 Folios: Series 3, 4, 6, 8, 9, 10, & 11 (Le Faubourg Saint-Germain, Le Faubourg Saint-Honore (Tomes Premier & II), Le'Hotel Lambert, La Place Vendome, La Quartier Saint-Paul & Le Ministre de la Marine. Folios, 1911-19 (26)

£300-£500



16

A 19th century carved stone head of a bearded king

Later mounted on an associated circular moulded stone socle plinth, 49cm high.

£1,200-£1,800

17

A small 19th century stone medieval style male head of a king

Later mounted on an oak block base, 28cm high

£300-£400



18

A small 19th century carved stone female head with medieval style headress

Later mounted on an oak block base, 30cm high.

£300-£400





19
An embroidered panel, Greek Islands, circa 1800
 Mounted on a stretcher 84cm x 65cm

£500-£700

20
An early 20th century Eastern European carved spinning wheel 76cm wide

£40-60

Provenance: Property from a deceased estate, Berkshire.





21

A 19th century brown glazed stone wall planter

In neo-classical style, with applied grotesque masks joined by foliate swags
47cm wide.

£80-£120

22

A 17th/ 18th century Spanish Valencian Manises Hispano-Moresque pink lustreware and blue glazed earthenware charger

With central roundel and stylised leaf border
32cm diameter

£150-£200



23

A small late 18th century maiolica Castelli plate, possibly from the Grue workshop, circa 1780

Depicting a bearded seated man by a classical ruin with boats in the background
17cm diameter.

£300-£500



24

A 19th century French faïence and ormolu mounted vase attributed to François Laurin (1827-1901) of Bourg-la-Reine

Of baluster form, polychrome decorated with playful putti within a landscape, on a socle base, with lion paw feet, 41cm high.

For further information see Slitine Florence, *La faïencerie Laurin à Bourg-la-Reine*. In: *Sèvres. Revue de la Société des Amis du musée national de Céramique*, no. 19, 2010. pp. 117-124.

£200-£300



25

A small 17th century oak rectangular foot stool On ring and baluster turned legs, joined by stretchers, on turned feet, 46cm wide.

£500-£700

Turnings of the bobbin pattern seen on the above lot in combination with a recessed seat appear on a higher stool, with an additional level of cross supports formerly in the collection of Mr Reginald Leon and illustrated in R. Edwards 'The Shorter Dictionary of English Furniture', London 1964, p. 501, pl. 10.



26

A mid 17th century carved oak coffer

The rectangular hinged lid above a lozenge carved front, with initials 'I.C' and dated 1642, with stile ends 135cm wide, 40cm deep, 48cm high.

£400-£600



27

An 17th century oak box stool

The rectangular hinged lid enclosing four later divisions on bobbin turned legs joined by stretchers on bun feet, 45cm wide, 39cm deep, 44cm high.

£1,500-£2,000

28

An 18th century oak lambing chair

The rectangular panelled back with shaped sides and scrolled arms, above a rectangular seat on turned legs joined by stretchers on block feet, with rear castors, 56cm wide, 66cm deep, 102cm high, seat height 39cm.

£1,500-£2,000



29

**An early 18th century
rectangular oak stool**

With channelled frieze on turned
legs joined by stretchers, on turned
feet, 66cm wide.

£800-£1,200



30

A Heriz carpet, North West Persia, circa 1920

360cm x 280cm

£1,000-£1,500





31

A Rashid Farrokhi type Kashan carpet, Central Persia, circa 1960s

Wool and silk, with a signature
391cm x 301cm

£500-£700

32

A Vintage Agra carpet

540cm x 251cm

£4,000-£6,000





33

A Sarouk mahal carpet, West Persia, mid 20th century 432cm x 333cm

£700-£900

34

A Karabagh rug, Caucasus, circa 1880

With Mehrab design, 127cm x 105cm

£1,000-£1,500



35

A vintage Persian Kashkooli rug

250cm x 178cm

£250-£350



36

A vintage Kashgai rug, South West Persia

255cm x 178cm

£500-£700





37

An 18th century Thai gilt bronze seated figure of Buddha Shakyamuni

Seated in dhyanasana with hands in Bhumisparsha mudra wearing a sanghati draped over his left shoulder, the serene face with heavy-lidded downcast eyes, 80cm high, 52cm wide.

£1,500-£2,000

38

A small early 20th century Japanese Satsuma baluster vase, Kinkōzan factory

With flared trumpet neck, polychrome decorated with exotic birds, flowers and leaves, on a deep blue ground, with Kinkōzan factory seal mark to the base, 18cm high

£400-£600





39

**A large 19th century
large Chinese
porcelain famille verte
vase**

Of baluster form with trumpet neck and pierced dragon handles, painted with prunus and chrysanthemums, with exotic birds, (restored), 61cm high.

£300-£500

40

**A Chinese brown and red
patinated mottled bronze vase
on an Empire gilt bronze stand**

The vase of baluster form, the triform scroll and lotus leaf cast supports on lion paw feet and tripartite base, 34cm high.

£100-£150



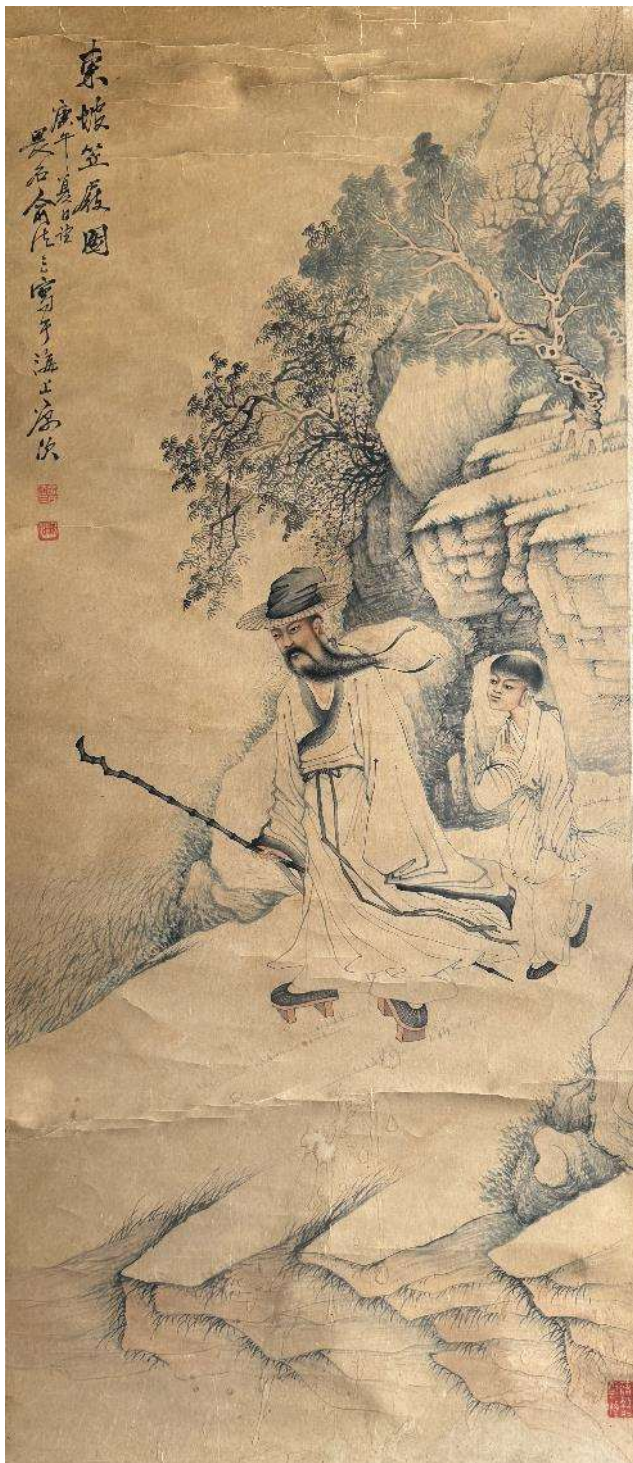


41

A group of Chinese and Japanese small works of art including netsuke and scent bottles

Including a hardwood carved puzzle ball, a carved figure of Ebisu, a carved swan, a rabbit, a frog, a pair of turtles and a pair of monkeys. (15)

£300-£500



42

Yu Fasan Su Dongpo and attendant

Ink and pigment on paper

Mounted as a hanging scroll, 54.5cm x 128cm

£600-£800

43

Follower of Wu Botaa (19th century Chinese School)

A concertina birchwood album of landscape painted sketches, with a later personal inscription
19cm x 12cm.

£100-£150



44

A set of four 19th century Chinese silk framed embroideries

Decorated with male and female figures, with trees, flowers, insects and animals within roundels, each 19cm x 19cm. (4)

£300-£500

Provenance: Purchased by Lord Elgin from China in 1860 and presented to Mrs Smythe of Methven Castle, Perth, thence by direct descent.



45 AR

Mona Rai (Indian b. 1947)

Mixed media on canvas

Signed and dated on reverse '05

145cm x 77cm

£400-600

Rai is an abstractionist who explores the expressive potential of different materials such as metallic leaves, fabrics, glitter, sand, gravel, dirt and ash in her paintings. Many of her works, both on canvas and paper, resemble battlegrounds: scorched, trampled, slit, wounded, scratched, scarred, bleeding and weeping to rend objects into emotional states and aesthetic consciousness.

46

A 19th century Indian silver repoussé cigarette box

Of rectangular form decorated with arabesques and scrolling leaves, 18cm wide.

£120-£180





47

A group of late 19th/ early 20th century Indian silver

Comprising of two open salts, a salt and pepper set, another pepper shaker, three lidded circular pots and a Burmese finger bowl. (10)

£60-£80

48

A mid 20th century French papier-mâché model of a prowling tiger

With glass eyes and teeth, (a.f), 49cm wide.

£300-£400



49 ¥

A very large vintage python skin, 532cm long

£30-40

Provenance: Property from a deceased estate, Berkshire.



50

A 19th century carved Colonial mahogany day bed

The caned over-scrrolled back and side rail within a moulded and carved mahogany frame, the caned seat with a linen covered squab, on tapering reeded legs and brass castors, 185 cm wide, 57cm deep, 92cm high.

£600-£800



51

A large Victorian copper garden planter / pot

Of circular hammered and riveted form, 58cm diameter, 44cm high.

£100-£150



52

A large Victorian copper garden planter / pot

Of circular hammered and riveted form, 54cm diameter, 43cm high.

£100-£150

53

A group of Continental earthenware cooking pots / bowls

Comprising of a large terracotta pot and lid, 34cm diameter, a pair of similar part glazed dishes, another with gadrooned decoration and a green glazed leaf pattern bowl. (6)

£30-£50



54

A group of mostly Asian and Middle Eastern metal and other cookware

Comprising of seven metal bowls, a copper ladle and saucepan, a pair of wooden scales and a French marble shallow bowl. (11)

£40-£60



55

A group of 20th century Columbian black clay cookware

Comprising of four lidded pots, a large circular twin handled dish, a similar oval and a small pot (lid missing), the large dish, £43cm wide. (11)

£60-£80



56

Two early 20th century Middle Eastern repoussé copper cooking pots and a later jardinière

The largest 29cm wide. (3)

£40-£60





57

A group of mostly Burmese tribal items

Comprising of a small lidded black clay cooking pot, a lidded basket, a copper bowl, two antique spoons (a.f) and a pair of late 19th century Burmese silver ceremonial Dha knives, 22cm and 17cm long respectively. (8)

£60-£80



58

A group of ethnic Burmese beaten copper cookware items together with a group of 19th century Burmese ceramic ware

Comprising of a kettle, a saucepan, a large round bottom bowl, and another, a cooking pot and lid, four metal bowls and four clay bowls, the largest bowl, 40cm diameter. (12)

£100-£150

59

A group of three Tibetan wooden yak butter pots, another pot and a leather woven seated stool

The tallest pot, 35cm high. (5)

£30-£50



60

Four 20th century Burmese opium pipes and an Indonesian hardwood tobacco box

Comprising two carved hardwood pipes with male heads, a carved bone pipe with dragon's head and a pipe with a clay bowl, the box with turquoise bead toggle. (5)

£30-£50



61

Three tribal metal wrought iron spearheads

Possibly East Asia, 65cm, 43cm and 32cm long. (3)

£30-£50



62

Five vintage North West Mexican folk art carved and painted dance masks

Comprising of a leopard, two female and two male masks. (5)

£60-80

Provenance: Property from a deceased estate, Berkshire.



63

Four West African Cameroon round metal bangles and two Indian metalware plates

Comprising of a pair of half bangles and two smaller bangles, one copper, both in two sections, the plates hammered and engraved, one white metal the other brass, 23.5cm and 21.5cm wide respectively. (6)

£30-£50



64

Two 20th century West African, Ivory Coast, masks, Baule

Carved wood, one with heightened features in red paint with net hair, 38cm and 30cm. (2)

£80-£120

Provenance: Property from a deceased estate, Berkshire.

65

A 20th century West African Mali Bambara N'tomo initiation mask, Marka

The carved oval face of carved wood with applied press metal, with a spiked comb, 66cm high.

£60-80

Provenance: Property from a deceased estate, Berkshire.



66

Two 20th century Southwest African, Congo horn masks, Chokwe

Carved wood and raffia one with a bamboo toggled beard, 45cm and 52cm high respectively. (2)

£150-200

Provenance: Property from a deceased estate, Berkshire.



67

A 20th century South West African, Congo mask, Chokwe

Applied with cowrie shells, beads and toggled bamboo beard, with two blue/ yellow feathers, 39cm high.

£60-80

Provenance: Property from a deceased estate, Berkshire.



68

Two 20th century South West African, Congo, red painted Pwo masks, Chokwe

Carved wood with raffia plaited hair, one with toggled bamboo hair, 38cm and 32cm. (2)

£150-200

Provenance: Property from a deceased estate, Berkshire.





69

Two 20th century Central African, Gabon, judicial masks, Fang

Carved wood with elongated features and partially painted white, 61cm and 51cm. (2)

£100-150

Provenance: Property from a deceased estate, Berkshire.

70

Two 20th century West African Ivory Coast masks, Senufo

Both of carved wood, with applied brass and shells, one with red fabric, each 59cm high. (2)

£150-200

Provenance: Property from a deceased estate, Berkshire.



71

A 20th century West African Ivory Coast mask, We / Guere

Painted wood with cowrie shells, hair and rope twist beard, 40cm high.

£150-200

Provenance: Property from a deceased estate, Berkshire.



72

A 20th century West African Ivory Coast mask, We / Guere, in the form of a baboon

Painted with open mouth, slit eyes, hair and wooden spikes, 23cm high.

£150-200

Provenance: Property from a deceased estate, Berkshire.





73
A vintage Karaja runner, North West Persia
 389cm x 64cm

£800-£1,200



74
A Shahsavam Kelim runner, circa 1910
 440cm x 121cm

£1,200-£1,800



75

A Khamesh Quashgai rug, South West Persia, circa 1900

178cm x 134cm

£1,000-£1,500



76

A Turkmen Pardeh rug, circa 1950

157cm x 104cm

£800-£1,200



77

A Bakhtiar rug, West Persia, 2nd half 19th century

300cm x 158cm

£1,200-£1,800



78

A Kahmseh runner, South Persia, circa 1910 442cm x 96cm

£800-£1,200



79

Jean Baptiste Le Prince (1734-1781)

Chaumière au bord d'une fleuve

Brown chalk

Framed and glazed 29cm x 26.5cm

£2,000-3,000

Provenance: De Mesringny family,
Troyes Comte de Parc, Chateau de
Vilebertin, Troyes by descent.
Private Collection, England

80

**Francesco-Guiseppe Casanova
(Italian 1727-1802)**

Military Scene

Brown ink with pencil indications 32cm
x 24.5cm

£2,000-3,000

Provenance: Purchased Wildenstein &
Co, 147 New Bond Street, London, 25th
September 1987.





81

Jules Achille Noël (French, 1815-1881)

Caen

Oil on canvas

Signed 54cm x 66cm

£250-300

Provenance: Purchased from Philip S Walden, Skipton, Yorkshire, March 1974.

82

Louis Dubois (Belgian, 1830-1880)

An Interesting Letter

Oil on panel

Signed 31cm x 23cm

£500-£700



83

Diego Marin Lopez (Spanish, 1856-1917)

Portrait of an Arab gentleman

Oil on panel

Signed 33cm x 19cm

£300-£500

84

James Alphege Brewer (1882-1938)

Venice (Doge's Palace)

A coloured etching of Venice

Signed and with embossed stamped to the bottom left corner

image 37cm x 59cm, overall framed, 60cm x 80cm

£80-£120



85

An early 19th century Swedish Empire giltwood pier mirror

The acanthus moulded cornice above a paterae, foliate lyre shaped and acanthus moulded frieze above a later rectangular plate flanked by moulded uprights, the base with a similarly decorated frieze, 132cm high, 70cm wide.

£400-£600





86

A 19th century Louis XVI style white and eau-de-nil painted duchesse en bateau / day bed

Upholstered in Claremont Armure Cannele pale green fabric, the arched padded ends within moulded and floral carved frames, with scroll arms on stop-fluted turned legs headed by paterae, together with two loose squab cushions, 193cm wide, 70cm deep, 99cm high.

£1,200-£1,800



87

A pair of late 19th century gilt bronze mounted onyx columns

The square revolving tops above turned supports on square stepped bases, each 25cm square, 102cm high.

£500-£800

A rare pair of late 19th century petit point tapestries depicting 'The Fish Market' and 'The Fish Quay' after Teniers and attributed to The Royal School of Needlework

Both within running borders of intertwined foliage Each 180cm x 240cm. (2)

£8,000-£12,000

David Teniers the Younger (1610-1690) was a prominent Flemish Baroque painter known for his detailed genre scenes, landscapes, and depictions of peasant life. Born in Antwerp, Teniers was heavily influenced by his father, David Teniers the Elder, and his father-in-law, Jan Brueghel the Elder. His skill in rendering lively, realistic scenes made him a favoured artist among the European aristocracy, including the Spanish court.

In the 17th century, tapestries were highly valued for their decorative and narrative qualities, often depicting historical, mythological, or pastoral scenes. Teniers's paintings, with their vivid storytelling and rich detail, provided ideal designs for this medium. His works were translated into tapestries by the renowned tapestry workshops in Brussels, a leading centre for tapestry production at the time. The "Teniers tapestries," as they came to be known, often featured rustic village scenes, festive gatherings, and peasant activities, capturing the essence of Flemish rural life. These tapestries were not only decorative but also served as a means of cultural expression and documentation and remained popular within the market for antique tapestries and therefore still a suitable subject for designs in the late 19th century.

The Royal School of Needlework (RSN), originally known as the School of Art Needlework, was founded in 1872 in response to the decline in traditional needlework skills and the lack of employment opportunities for women. The initiative was spearheaded by Lady Victoria Welby, an avid supporter of arts and crafts, with significant backing from Princess Helena, Queen Victoria's daughter. The founding mission was two-fold: to revive the art of hand embroidery and to provide respectable employment for women, which was scarce at the time.

The school initially set up its premises in a small house in Kensington, London. It quickly gained attention for its high-quality work and its role in championing the skills of female artisans. By 1875, the institution's growing prestige led to it being granted the "Royal" prefix, officially becoming the Royal School of Needlework, a testament to its royal endorsement and rising reputation.

The early years of the RSN were characterized by a dedication to excellence and innovation in embroidery. The school attracted many skilled embroiderers who contributed to a diverse range of projects, from ecclesiastical vestments and banners to fashionable household items. The RSN's work was showcased in prominent exhibitions, including the 1878 Paris Exposition, which helped to solidify its reputation internationally. During this period, the RSN also began its association with notable artists and designers of the Arts and Crafts Movement, such as William Morris and Edward Burne-Jones. These collaborations infused traditional needlework with contemporary artistic sensibilities, leading to a renaissance in the craft.



89

**A 19th century Aubusson rug,
France, circa 1880**

Lined, 190cm x 147cm

£1,500-£2,000



90

**A 19th century French
Savonnerie rug**

169cm x 86cm

£200-£300



91

**A good 19th century Aubusson
entre-fenêtre, France, circa 1870**

With highlights in metallic thread

288cm x 105cm

£1,500-£2,000

92

**A group of 19th century French
Empire style gilt bronze furniture
mounts (Qty)**

£120-£150



93
**A 19th century gilt bronze plaque of a standing saddled
horse**
22cm high.

£30-£40





94

A late 19th century gilt bronze figure of a boy tobacco merchant

The standing figure in Renaissance style dress, holding a tray of his wares, on a leaf cast base and octagonal black marble base, 20cm high.

£150-£200



95

A white metal Renaissance style dolphin and shell open salt and a circular Indian repoussé silver dish The salt, 10cm high, dish decorated with scrolling leaves and lions, 13cm diameter. (2)

£80-£120



96

A 19th century French Empire style gilt bronze and glass desk stand together with a 19th century French bronze surtout de table and a glass and gilt metal mounted dish retailed by Giroux, Paris

The rectangular stand centred by a ink well with globe hinged lid, 18cm wide, the square surtout of Louis XV style with pierced handles, on scroll feet, £30cm wide, the circular dish, previously possibly with a lid, etched with flowers with bamboo style ring handles on four outswept feet, stamped MAISON ALPH. GIROUX PARIS, 17cm wide.

£120-£180

97

A 19th century French Empire style gilt bronze candelabrum base converted to a table lamp

With leaf case stem, on tripartite monopodiae platform base with lion paw feet, drilled and fitted for electricity, together with a green pleated shade
40cm high including fitting.

£150-£200



98 ¥

A late 19th century French scarlet tortoiseshell and gilt bronze mounted Louis XV style mantel clock by Marti et Cie

Of cartouche shape with pierced acanthus leaf cresting, applied with C' scrolls and leafy fronds, the circular enamelled dial with Roman and Arabic numerals; the twin-train movement striking on a gong, stamped for Marti et Cie and numbered 6
23cm wide, 13cm deep, 52cm high.

£500-£700



99 ¥

A late 19th century French rosewood and gilt bronze mounted mantel clock by Vincenti and Grohé

In the Louis XV style, the arched case applied with scrolling leaves and bold scrolling feet, the circular enamelled dial with Roman numerals (damaged), the twin train movement by Vincenti with anchor escapement and outside countwheel strike, stamped on the backplate for GROHE, Paris and Vincenti (further marked DZ in an oval), numbered 1014, pendulum and bell lacking
31cm high.

£300-£500



100

A 19th century French gilt bronze and Sèvres style mounted mantel clock by Phillipe Mourey the movement by Japy Frères

With twin handled urn finial above a 3 1/2in dial with Roman numerals above a plaque painted with two young lovers, flanked by cornucopia and turned urns on a stepped base and turned feet, the twin train movement striking on a bell, stamped for Japy Frères and numbered 226, the case stamped on the reverse, 'P H. MOUREY'
28cm wide.

£200-£300





101

A Sèvres blue celeste water jug and cover (pot a l'eau, fourth size), 18th century

Of baluster form with scroll handle, heightened in gilt on a white ground decorated with a cherub riding a dolphin, with gilt vermiculé, interlaced L mark, the lid formerly fixed to the handle with a mount, now removed

14.5cm high.

£100-£150

102

A mid-19th century French gilt bronze and porcelain tazza / centrepiece

In the Louis XVI style, the green and white shaped circular dish, gilt and polychrome painted with a central reserve of attributes of the summer harvest above a double 'S' scrolling triform support and tripartite platform base with scroll feet, 25cm high.

£150-£200



103

An early 19th century French Empire twin-light wall appliqué

With central lions mask roundel issuing scroll arms with arrow quiver cast sconces, drilled for electricity, 39cm wide.

£80-£120

104

A pair of 19th century French Empire style three light wall sconces with leopard's heads

Of circular form, the rings cast with stiff leaves and flowerheads, each 19cm wide. (2)

£100-£150



105

A pair of 19th century French Empire gilt bronze swan candlesticks

The leaf cast drip pans, nozzles and stems each with three swans applied to the shaped bases, each 17cm high. (2)

£100-£150



106

After Emile Picault (French, 1833-1915), A large and impressive pair of patinated spelter classical male figural lamps

One titled 'Opima. Spolia', the other untitled but a known model 'Virtues Civica Ense et Labore', each holding a torch and carrying weapons, on circular red griotte marble bases, together with shades, fitted for electricity, each 87cm high excluding fittings. (2)

£600-£800





107

Antonio Pandiani, (Italian 1838-1928), A pair of late 19th century patinated bronze figural twin light lamp bases, circa 1900

In the form of a pair of a male and female baccante leaning against a classical term of Bacchus, on rectangular bases, the reverse of both signed A. Pandiani, Milan and dated MDCCCC for the year 1900, the glass foliate shade and fittings of a later date, each 45cm high. (2)

£100-£150

108

A pair of large 19th century French ormolu candlesticks in the manner of Corneille Van Cleve (French, 1646-1732)

With male and female figural stems each holding a child aloft; on swirling circular bases, each 40cm high. (2)

See Christies, London, 9 December 1993, lot 97 for a pair of the same model previously sold by the late Mrs Tritton, Godmersham Park, Kent at Christie's house sale, 6-9 June 1983, lot 319.

£500-£700





109

A pair of late 19th century Louis XIV style gilt bronze three light girandole mirrors

The rectangular bevelled plates surmounted by Apollo masks, with pierced dragons to the sides, above winged female masks issuing scrolled arms and sconces, each 44cm high. (2)

£250-£250



110

A large early 20th century terracotta classical twin handled urn with a metallic bronzed glaze

The handles in the form of winged females, the tapering body decorated with figures, swags, ribands and peacocks, on a turned socle base, 44cm wide 74cm high.

£150-£200



111

A late 19th century pietra dura hardstone onlaid onyx and gilt bronze double picture frame

Of oval form applied with a white and blue floral spray, the hinged frame with a pierced leaf cast and engraved border with hinged easel support, 25cm high.

£120-£180

112

A 19th century Italian pietra dura inlaid ebonised box and a 19th century pietra dura press papier

The rectangular box with panel in the lid of a white single rose, 23cm wide, the rectangular moulded press papier inlaid with Lily of the Valley, 12cm wide. (2)

£100-£150





113

A pair of large Zsolnay porcelain groups of two fighting bears by Béla Markup, dated 1911

On stepped circular bases, each 30cm high. (2)

£60-£80

114

A 19th century Staffordshire blue, white, polychrome floral decorated and gilt tea service

Comprising of twelve tea cups, eleven saucers, a teapot, a sucrier, two cake plates and a side plate.(qty)

£150-£200





115

An Irish Waterford cut glass helmet shaped centrepiece, circa 1800

With scalloped edge, turned stem and oval footed base
35cm wide.

£80-£120



116

A pair of 19th century Wedgwood black basalt plates

Decorated with the triumph of
Venus, both with impressed marks
WEDGWOOD
22cm diameter. (2)

£60-£80



117

A small 19th century Wedgwood black basalt pot with cover

Of classical form, the lid with a finial in the form of a seated cloaked woman, with squat bulbous body with twin handles; decorated with a frieze of classical figures, with impressed marks WEDGWOOD, 11cm high.

£60-£80

118

A 19th century Wedgwood pale blue jasperware vase and a pair of Wedgwood dark blue jasperware spill vases

The vase of classical squat form decorated with draped swags and stiff leaves with turned socle and square base, 19cm high, the tall spill vases with classical maidens playing harps, each 15cm high, all with impressed marks. (3)

£180-£220



119

A Burmantofts faience red and yellow glazed twin handled vase

Of globular form, decorated with an embossed pattern, No. 775, 15cm high.

£40-£60



120

A 19th century Dutch silver tea caddy, dated 1885 and a Dutch silver tea strainer with import marks for 1935

The caddy in the form of a Kas, decorated with figures and animals in a domestic setting, with leaf cast finials, on ball feet (one missing), 19cm high, marked, the pierced strainer with oval panels of windmills and boats, strainer some marks rubbed, marked £.925, with London import marks for 1935, 13cm wide. (2)

£150-£200

121

A silver model Asian elephant in walking pose

Carrs of Sheffield Ltd, Sheffield, 1999
25cm wide. (Filled)

£400-£600





122

A large silver capstan inkwell, William Neale & Son Ltd, Birmingham, 1912

With white porcelain liner, 17cm wide.

£50-£80



123

A group of mostly early 20th century silver and silver plate

Including a egg cup, Wolfsky & Co, London, 1921, a Mappin & Webb silver plated pepperette, salt and mustard pot, an engraved silver cigarette case, A & J Zimmerman Ltd, Birmingham, 1899, a silver snuff box, Saunders & Shepherd, Chester, 1906, a silver coin holder, London, 1905, a silver plated and cut glass small vase, a small brass magnifying glass, an art nouveau style photograph frame, a silver pepperette, London 1916, a small silver paper weight, Philip Kydd, Birmingham, 1998 and a white metal mounted mate gourd cup. (qty)

£100-£200

An extensive composite canteen of mostly silver plated Marly pattern cutlery by Christofle, Paris

Comprising: 12 dinner knives, 11 dinner forks, 12 table spoons, 30 dessert forks, 12 dessert spoons, 12 dessert knives, 12 egg spoons, six smaller fish knives, 12 cake forks, 5 cake forks, 12 fish knives, 12 tea spoons, 12 tea spoons, a salad server fork and spoon, a soup ladle, a sauce ladle, a fish fork and server, a cake server, a large fork, a bread knife and another large knife, a pair of oval serving spoons, a pair of serving spoons, 6 similar silver plated tea spoons, a similar silver plated pickle fork, a similar silver plated meat fork
Together with a similar pattern set of silver plated continental cutlery comprising: 11 spoons, 7 forks, 6 knives (qty)

£1,500-£2,000





125

A late Victorian carved oak upholstered billiard bench by JAs Shoolbred & Co, in the manner of Alfred Waterhouse

Upholstered in red velvet, with rectangular back with carved top-rail and turned finials above leaf carved scroll arms, rectangular padded seat on baluster turned legs joined by an 'H'-stretcher, upholstery distressed, 139cm wide, 71cm deep, 113cm high.

£200-£300



126

A Regency gonçalo alves and sycamore marquetry library table

In the manner of George Bullock, the rounded rectangular top above a beaded frieze drawer flanked by paterae; above standard panelled end supports inlaid with stylised leaves, joined by a lotus leaf turned stretcher, on downswept legs and brass lotus leaf cappings and castors, 117cm wide, 61cm deep, 74cm high.

£400-£600



127

A George III mahogany and satinwood banded circular breakfast table

The tilt top above a ring turned baluster shaft, on downswept quadripartite legs and square cappings and castors, (top split), £127cm diameter, 73cm high.

£120-£180

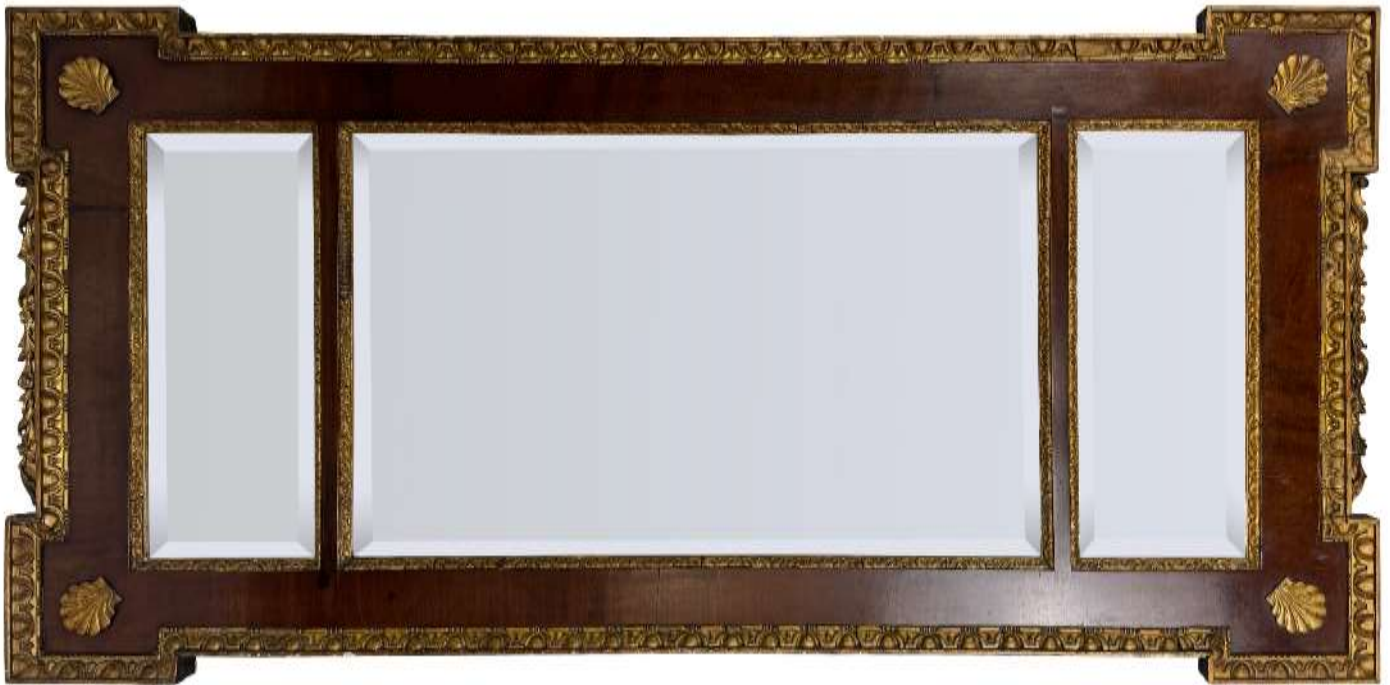
128

A George IV burr elm wellington chest

The rectangular top above six short drawers, with side locking mechanism, the top drawer with fall front enclosing six pigeonholes, the rest with internal hinged lids; on a moulded plinth base, 61cm wide, 40cm deep, 120cm high.

£600-£800





129

A George II style mahogany and parcel gilt triple plate landscape mirror

The bevelled plates within gilded leaf carved slips, within a rectangular egg and dart moulded frame, with projecting corners applied with carved shells, 84cm high, 164cm wide.

£300-£500



130

A George III style carved mahogany partner's pedestal desk by S & H. Jewell, London

In the manner of Thomas Chippendale, the rounded rectangular shaped moulded top with black tooled inset leather, above a frieze drawer and opposing drawer with two drawers to each end; above a pair of acanthus and bellflower carved panelled doors with stop fluted uprights, two enclosing three fitted drawers and one with shelves and one with upright divisions, on a moulded plinth base, with ivory label for S & H. Jewell, 26, Parker St, London, WC2, 51cm wide, 109cm deep, 79cm high.

£1,800-£2,200



131

A Regency mahogany side cabinet

The rectangular top above two pairs of pleated silk grille doors flanked by stiff leaf carved turned supports; on turned feet, (previously possibly with a superstructure), 92cm wide, 36cm deep, 91cm high.

£600-£800

132 ¥

A William IV Irish rosewood waterfall bookcase

The rectangular top above four graduated shelves, above a pair of panelled doors, on lion paw feet, with castors, 111cm wide, 47cm deep, 131cm high.

£500-£700



133

A Regency mahogany four division canterbury

With pierced carrying handle and drawer below on ring turned tapering legs with brass castors, 47cm wide, 32cm deep, 49cm high.

£200-£300



134

A pair of Mallets black japanned and lacquered coffee tables Incorporating 19th century screen panels and heightened with gilt chinoiserie, the square tops with fixed clear glass protectors above japanned friezes with pierced brackets, on scroll feet, each 53cm square, 43cm high. (2)

£600-£800

135

A group of three early 19th century framed portrait miniatures of gentlemen

Comprising of a pencil and coloured wash of Lt Colonel John Johnston (1726-1802) of the Portsmouth Division of the Naval Marines, 8.5cm, a watercolour of a gentleman in a blue coat, 8cm and a mezzotint of a gentleman, 6.5cm, all in ebonised frames. (3)

£80-£120



136 ¥

19th century School, An oval half portrait miniature of a gentleman in black jacket

Watercolour on ivory 8cm high

Ivory Act Submission Reference CKN8JYSF

£500-£700



137 ¥

W. Cruikshank (British, 1848-1922)

Still life of dead game in a larder with a cat chasing mice

Watercolour

Signed 12.5cm x 20cm

£300-£500

138

Thomas Faed RA, HSRA (British, 1826-1900)

Portrait of lady with a basket of flowers

Watercolour

Signed

In an elaborated gilt wood frame contained within a glazed box frame, 43cm x 38cm. I/s 27cm x 23cm

£600-£800



139

Attributed to Sir William Ross R.A (British, 1794-1860)

A pair of portraits of the young Queen Victoria and Prince Albert Watercolour

Unsigned

Each approximately 11cm x 8cm (2)

£1,000-1,500

Provenance: The Estate of Cherry Barker

140

Attributed to John Linnell (1792-1882)

A North Downs View

Pencil and Chalk

25cm x 17.5cm

£30-£50



141

William Mellor (British, 1851-1931),

On the Conway

Oil on canvas

Signed 29cm x 44cm

£600-800

Provenance: Purchased, The Hampshire Gallery, September 2004

142

After Edwin Henry Landseer (British, 1802-1873), 20th century School

The Cavalier's Pets

Oil on canvas

Unsigned 30cm x 39cm

£200-£300





143
19th century School in the manner of George Armfield

Foxes hunting

A pair of oil on canvas

Signed indistinctly Each 19cm x 24cm (2)

£800-£1,200



144
19th century British School in the manner of George Armfield (British, 1810-1893)

Spaniels Flushing

Oil on canvas

Unsigned 15cm x 22cm

£300-£500



145

F.A.Tillyer? (early 20th century British School)

Hunting Scene

Watercolour

Signed 55cm x 90cm

£300-£500

146 AR

Eva Savory (British, 1882-1938)

Fresh From The Garden

Watercolour

Signed 50cm x 75cm

£250-£350



147 AR

Robert McGregor RSA (Scottish, 1847-1922)

Grandmother and child in a cottage interior

Oil on canvas

Signed 34cm x 24cm

£200-£300

148

A late 19th century walnut and gilt bronze mounted ting-tang quarter striking bracket clock by Lenzkirch

The domed leaf carved top with flame finials above an arched glazed door flanked by stiff leaves, trailing bellflowers and flutes, on a stepped base and scroll feet, the 6" inch dial matted gilded with silvered chapter ring and Roman numerals below a rise fall regulation; with pierced foliate spandrels; the movement with anchor escapement and ting tang quarter striking on two gongs, stamped LENZKIRCH and numbered 405515, 27cm wide, 20cm deep, 39cm high.

£500-£700



149

A 1930's Regency Revival ebonised and parcel gilt carved female standing Egyptian term

Smiling with arms crossed, on a circular plinth base and turned feet, 74cm high.

£500-£700

150 ¥

A group of six mostly 19th century tea caddies Including a rosewood sarcophagus shaped caddy, a papier-mâché caddy, two mahogany and boxwood inlaid caddies, a continental pear shaped caddy and a Chinese parquetry caddy. (6)

£120-£180



151 ¥

A group of three George III mahogany and sycamore marquetry serpentine knife boxes

Two fitted for cutlery, one rosewood crossbanded, with inlaid monogram 'R B' and later fitted for stationery, each approximately 37cm high. (3)

£200-£300



152

A late 19th / early 20th century mahogany country house letter box

Of rectangular form, the hinged moulded lid above plain sides, on a moulded base, 40cm wide, 24cm deep, 22cm high.

£200-£300



153

A pair of 19th century Derbyshire Ashford black marble floral inlaid vases

Of cylindrical form, both with white flowers, one with malachite leaves, on octagonal bases, 15cm high. (2)

£60-£80





154 ¥

Three items of 19th century brass and scarlet tortoiseshell

marquetry including a stationery casket by Briggs of Piccadilly

The stationery casket with hinged domed lid, enclosing eight divisions and a drawer, 21cm wide, together with a blotter, 29cm x 22cm and an inkstand, with two cut glass bottles and a carrying handle, 24cm wide (3)

£500-£700

155 ¥

A Regency tortoiseshell and gilt bronze standish or inkstand with ivory banding

Of shaped rectangular form, with carrying handles and two cut glass ink pots; on winged eagle feet, 27cm wide.

Ivory Act Submission Reference 5BGSUHXR

£200-£300



156 ¥

A group of 19th century tortoiseshell and silver inlaid objects of vertu

Comprising of two card cases, a small hinged rectangular box and a cased glass scent bottle.
(4)

£100-£150



157 ¥

A Victorian tortoiseshell and ivory box of seven razors named for each day of the week by A.W.Staniforth of Cardiff

Of rectangular form, the hinged lid enclosing a fitted interior with tortoiseshell razors for each day and inscribed 'The G H S', 18cm wide.

**Ivory Act Submission Reference
E4SCAZNU**

£500-£700

158 ¥

A Victorian tortoiseshell and ivory razor case, possibly by Thornhill, 114 New Bond St.

Of rounded rectangular form, enclosing two ivory razors, one razor stamped 'THORNHILL, 144 NEW BOND ST', 17cm wide.

**Ivory Act Submission Reference
KNMESG23**

£200-£300





159 ¥

A Victorian mahogany and brass bound cased gentleman's dressing box by Fisher, 188 The Strand, London

The hinged lid enclosing a mirror, the fitted interior with removable tray with two lidded compartments enclosing an ivory brush, a toothbrush, glass scent bottle three cut glass pot with silver plated lids, a shaving brush, two ivory cut throat razors, with three brushes a leather strop underneath, 23cm wide, 15cm deep, 11cm high.

Ivory Act Submission Reference 4YLSLZ9N

£300-£400



160

Three large vintage Barber's Shop display models

Comprising of a shaving brush, 29cm high, a wooden painted razor, 61cm wide and a 'Matador' comb, 41cm wide. (3)

£500-£700



161

A group of mostly silver plated and chrome plated gentlemen's shaving items

Comprising of a campaign shaving jug of funnel shape, engraved 'LD BP' an Lampe Marcel moustache curling iron and a similar one by Meta, a Mappin & Webb campaign stove, a volcano shaped shaving burner, a copper plated shaving campaign stove and a shaped silver plated shaving mug. (7)

£50-£80

162

Three 19th century black and white transfer printed shaving mugs

One lidded and decorated with various satirical cartoons and Chinese figures in landscapes, named 'William Barber', another 'Semi China' for G. Tyrer's Improved Soda Font, Liverpool and another floral decorated. (3)

£150-£200





163

Two Victorian floral pottery shaving mugs

One cobalt blue and gilt, decorated with floral reserves, with commemorative inscription for Herbert Edgerton Beech, born July 1849, the other decorated with blue, red and green floral sprigs on a white ground. (20)

£180-£220



164

Two Victorian floral transfer printed pottery shaving mugs

One blue and white, with twin handles and lid, the other purple and white with lid and inscribed 'Present to J.Floyd'. (2)

£80-£120



165

A late Victorian Royal Worcester yellow and gilt aesthetic movement shaving mug

Decorated with pink and blue floral sprays and a butterfly on a canary yellow ground, 19cm wide.

£200-£300



166

A late Victorian Royal Worcester white, blue and gilt aesthetic movement shaving mug

Decorated with gilt flowers with blue leaves, 21cm wide.

£200-£300



167
Two silver mounted white porcelain shaving mugs, the silver marked Levi & Salaman, Birmingham, 1901
 Porcelain also marked, 'LS'. (2)

£80-£120

168
A large white and gilt pottery shaving mug with lid
 Inscribed 'J Hutly from B Woodford, 1852'.
 £80-£120



169
A group of four late 19th century Continental shaving mugs in the floral form
 In various colours and shapes, three gilded.
 (4)

£80-£120

170
Eight 1930's pottery shaving mugs
 Including four brightly coloured mugs by Shelley, a Wedgwood pearlware mug, a Keeling & Co. 'Losol Ware' mug and two floral decorated mugs. (8)

£80-£120



171

**Kirman Carpet, South East Persia, circa
1890**

576cm x 371cm.

£2,000-£3,000



172

A Kirman carpet, central Persia
298cm x 194cm

£700-£900

173

A vintage Qashqai carpet, South Persia

304cm x 213cm

£1,000-£1,500



174

A Kirman Laver carpet, South East Persia, circa 1880

328cm x 268cm

£2,000-£3,000



175

A Mahal carpet, Central Persia, circa 1910

414cm x 317cm

£2,000-£3,000

176

A set of three Chinoiserie taupe and white glazed table lamps

Comprising of a faceted gourd shape lamp and two rectangular tapering shaped lamps decorated with exotic birds and flowers, fitted for electricity, 51cm, 58cm and 52cm high respectively. (3)

£150-£200



177

A set of four vintage black painted copper twin-light wall lights

With scrolling arms and petal shaped sconces, fitted for electricity, each 29cm wide. (4)

£40-£60



178

A 1930's Art Deco chrome, glass and bird's eye maple standard lamp

With clustered column and circular base, fitted for electricity, 157cm high including fittings.

£40-£60





179

An Alexander Girard teak coffee table designed by Knollstudio in 1948

Of asymetric form on black tubular legs, 148cm wide.

£300-£500

180

An Italian 1960's white and red glass handkerchief vase

32cm high.

£60-£80



181

A mid-century modern brass and black metal twin-light table lamp

The circular shade on a cylindrical stem on tripod legs, fitted for electricity, 40cm high.

£50-£70



182

A vintage industrial metal desk lamp

With long metal shade on two supports and rectangular base, fitted for electricity, 51cm wide.

£50-£70



183

A 1960's Spanish modernist black and chrome table lamp by Fase

With chrome cluster column on circular base, with pull cord switch, fitted for electricity, 47cm high

£200-£300



184

A 1960's Spanish Boomerang 64 grey desk lamp designed by Luis Perez de la Olivia for Fase, 1965

With circular adjustable shade and diffuser, with switch on the circular base, fitted for electricity, 40cm high.

£400-£600



185

A 1970's Spanish 520C grey metal and chrome desk lamp designed by Luis Perez de la Olivia for Fase, 1969

With circular adjustable shade, with circular base, diffuser missing, fitted for electricity, 41cm high.

£400-£600



186

A 1950's French chrome clamping desk lamp by Ferdinand Solère for Solère, Paris

With circular adjustable shade and blue diffuser, hinged arm and clamp fitting, fitted for electricity, 99cm long.

£150-£200



187

A 1950's French telescopic green metal desk lamp by Ferdinand Solère for Solère, Paris

With circular adjustable shade, on a circular base, fitted for electricity, 43cm high.

£150-£200



188

A vintage industrial articulated 'Localite' grey metal work desk lamp by Fostoria, Ohio

Previously fitted to a work bench, fitted for electricity, 112cm long.

£30-£50



189

A vintage P.W. Allen & Co. black metal desk industrial engineer's inspection lamp

With articulated shade and hinged arms, on a circular base, fitted for electricity, 55cm long (approx).

£40-£60

190

A 1970's Spanish grey metal articulated and sprung Flexo desk table lamp by Fase

With adjustable shade and arm, on a circular base, (a.f), 84cm long.

£40-£60



191

A 2011 G.E Fabbri 1/8th scale Aston Martin DB5 model of James Bond's Aston Martin

With subscription magazines and part identification leaflets, 56cm wide.

£400-£600



A large collection of Rorke's Drift related figures by Trophy Miniatures and Bygone Era with a building by JG Miniatures

The Bygone Era sets to include Zulu War, The Last Bullet, 24th Regiment with Ammunition box and set 2/39, the Trophy Miniatures sets to include Hand to Hand, Advancing Zulus, Taunting Zulus, Wounded Zulu Warriors, Savage Fury, Kneeling Firing Set, Fix Bayonets, Reload, The Firing Set, The Charging Set 24th Regiment and Prone Firing Set, also to include three Rorke's Drift buildings, two sections of sandbagging and six sections of pebble walling and a gun carriage. (qty)

£500-£800



ENGLAND 1966 FOOTBALL WORLD CUP An embroidered blazer badge and a group of 1966 World Cup tickets stubs, a press pass and invitations and menus for the celebratory banquet at The Royal Garden Hotel, Kensington

The blazer badge embroidered in wire with 'WORLD CHAMPIONSHIP JULES RIMET CUP ENGLAND 1966' surrounding a padded globe with World Cup and England Badge, together with a padded WORLD CHAMPIONSHIP JULES RIMET CUP 1966 FOOTBALL ASSOCIATION WORLD CUP ORGANISATION liaison pass numbered 020, for Peter Barker, Display and Presentation officer, four ticket stubs for the EMPIRE STADIUM WEMBLEY WORLD CHAMPIONSHIP 1966 JULES RIMET CUP semi-final (ENGLAND - PORTUGAL) on Tuesday 26th July 1966, North Stand, Row 18, Seats 42, 43, 44 & 45, two ticket stubs for the EMPIRE STADIUM WEMBLEY, WORLD CHAMPIONSHIP 1966 JULES RIMET CUP FINAL TIE (ENGLAND - WEST GERMANY) on Saturday 30th July 1966, North Terrace, Row 34, seats 155 & 156, stamped COMPLIMENTARY and a printed invitation to the banquet to celebrate the final of the World Cup on Saturday 30th July 1966 at 8.00pm from the Chairman and Council of the Football Association and a further personalised (Mr P Barker) and printed invitation to the from the Prime Minister to the reception at The Royal Garden Hotel, Kensington, Saturday 30th July 1966, 8pm-9.00pm, a printed menu for the banquet at The Royal Garden Hotel, with toast list and also with a small printed card from the Football Association printed with the World Cup logo and 'With the grateful thanks of The Football Association for the valued assistance in the preparation of the World Championship, Jules Rimet Cup, July 1966.

(qty) Provenance: Peter Barker (1915-2012) Display and Presentation Officer for the 1966 World Cup and thence by descent. ENGLAND'S 1966 WORLD CUP VICTORY The 1966 FIFA World Cup, held in England, remains a seminal moment in the nation's sporting history. The tournament, hosted from July 11 to July 30, saw 16 teams from around the globe competing for the coveted Jules Rimet Trophy. It was the first and, as of now, the only time England has won the World Cup, with their victory cementing a golden era in English football. The tournament began with England, managed by Alf Ramsey, drawing against Uruguay, then securing victories over Mexico and France to top their group. In the knockout stages, England defeated Argentina 1-0 in a controversial and fiercely contested quarter-final, with Geoff Hurst scoring the decisive goal. The semi-final saw England triumph over Portugal 2-1, thanks to a stellar performance from Bobby Charlton, who scored both goals. This victory set up a historic final against West Germany at Wembley Stadium on July 30, 1966. The final, attended by a record crowd, is one of the most memorable in World Cup history. England fell behind early but quickly equalised through Geoff Hurst. Martin Peters gave England a 2-1 lead, but West Germany levelled the match in the closing minutes, sending the game into extra time. In the extra period, Geoff Hurst scored a contentious goal, with the ball hitting the crossbar and bouncing down on the goal line. The referee, after consulting the linesman, awarded the goal. Hurst completed his hat-trick in the final moments, securing a 4-2 victory for England. Hurst remains the only player to have scored a hat-trick in a World Cup final. England's 1966 World Cup win is celebrated as a pinnacle of national pride, symbolising excellence in football and leaving an enduring legacy in the sport's history.

£250-£350



194

An 18ct gold keyless lever half hunter pocket watch by Jays of 366 Essex Road, London

The front cover with blue Roman chapter ring, with a white enamel Roman dial with running seconds at VI and blued steel hands, the signed 3/4 plate gilt movement with two double-screwed chatons, cut and compensated bimetallic balance with gold timing screws to a lever escapement, hallmarked London, 1938, makers mark CB, 40mm diameter.

£1,200-£1,800



195

An 18 carat gold key wound pocket watch

The Roman dial floral engraved centre and gilt cuvette opening to reveal a gilt bar movement and cylinder escapement, the case marked 18k AA 13373, 35mm diameter.

£300-£500

196

A 19th century 18ct gold Albert chain of bracelet length, hung with a George IV 1823 £2 double sovereign

The sovereign with soldered pendant loops, albert links with crown and 18 hallmarks, worn maker's mark possibly EC, length 20cm / 8", coin 27mm diameter, tests as 22ct gold, 49.36g gross (chain approx. 33g)

£2,000-£3,000



197

A mid-20th century retro lady's bracelet wristwatch by Baume & Mercier in diamond, calibr  ruby and yellow metal

Testing as 18ct gold, Swiss made, of stylish architectural design, signed rectangular dial covered by an arched glass, Arabic, dot and bar hour markers, back of yellow metal case signed 'BAUME & MERCIER GENEVE', serial number 20342, inside numbered S7164 & 205, Swiss control mark, 17 jewelled movement signed 'B&M GENEVE' stamped to underside of lugs 18K 0.750, and 'AB', hinged bangle style bracelet open at the back, inside length in minimum position approx. 14.5cm / 5 7/8" Case 25 x 11mm, bangle 6mm, 24.10g

 1,000- 1,500



198

A 19th century rose cut diamond oval panel brooch

With inset star field set with seven rose cut diamonds, later hinged pendant fitting and brooch pin (pin base metal), gold tests as around 15ct, central rose cut diamond spreads approx. 5.2 x 5.2mm, other roses approx. 3mm, length of oval 45mm / 1 3/4", 10.20g

 250- 350



199

A Tiffany yellow metal gaspipe bracelet customised with a central diamond collet

Applied marks: 'T & Co C1988', 'PALOMA PICASSO', '18K ITALY', tests as 18ct, together with a Tiffany stamped bracelet case, diamond approx. 0.18ct, added to cover some earlier damage. Length 17cm / 6 3/4" (width 7mm), 14.95g.

 400- 600



200

A selection of charms

Comprising of a 9ct gold mounted citrine swivel fob, Birmingham marks, Hardstone swivel fob, tests as 9ct; 9ct gold water mill, 3.85g; 9ct gold cruise ship, 3.04g; two 9ct gold medallions (St Christopher and Libra scales), 5.65g gr; a heart testing as 9ct, remains of a 9ct gold 'break in case of emergency' type charm with folded note; a Sibon watchhead tests as 9ct, together with other items in base metal including a novelty household utensil charm group

£120-£180



201

A pair of metal and diamond lobed fan earrings

The graduated bombé ribs fanning from two row diamond line crescent, stamped '14K 585', tests as 14ct gold. diamonds round brilliant cut, 30 counted, approx. 0.45cts, length 28mm / 1 1/8", width 25mm / 1", 20.30g.

£1,000-£1,500



202

A pair of 19th century pierced gold and purple-paste panel brooches, circa 1880

The central oval faceted paste-doublers painted within in polychrome with a little dancing figure of Cupid playing a pipe and with quiver just visible at shoulder, bordered by stylised sunflower petals, pierced ground, beaded borders, the brooch fittings later and French marked (workshop mark and assaymark for 18ct), tests as 18ct, panels with French owl control mark for gold of unknown French origin or import, length 54mm / 2 1/8", width 41mm / 1 5/8", 52g gross.

£3,000-£5,000



203

A mid-20th century diamond, sapphire and yellow metal rosette ribbon clip earrings

Round brilliant cut diamond seven stone cluster centres, circular cut sapphire accent edged, hinged clips, diamonds approx. 0.85cts in all, approx. G/H VS, overstamped '585' (over '750') but tests as 18ct, length 22mm / 7/8", width 20mm / 3/4", 13.30g.

£1,500-£2,000



204

A small group of stud earrings

Comprising of a pair of old brilliant cut diamond studs, old mine type, claw set, approx. 0.55cts in all, approx. H/I I1 & I/J SI; a pair of pierced hoops testing as 14ct 1.33g; pair of 11mm yellow metal studs testing as 9ct 1.65g; pair of 4.9mm yellow metal ball studs testing as 9ct 0.27g; pair of cultured pearl studs, 7.7-7.8mm, mounts testing as 9ct; pair of garnet studs, tests as 9ct and a pair of costume pearl cluster studs, (7 pairs in all)

£100-£150

205

A pair of ruby and diamond cluster stud earrings together with two single cluster earrings

In yellow metal heart frames testing as 9ct gold, screwback fittings stamped 9CT, length 11mm, 2.44g, the cluster earrings, one in turquoise, one ruby and diamond, both test as 9ct, 2.08g gross.

£60-£80



206

An assortment dress items comprising a set of three yellow metal knop dress studs

Tests as 9ct, plus other elements testing as 9ct, 4.50g gross.

£60-£70



207

A 19th century micromosaic and silver stud-button

With daisy flower design, shaped square outline with beaded border, mounted with French control mark for silver, crescent fitting to back, 22 x 22mm, 3.05g

£30-£40

208

Three items of gem set jewellery

Comprising of a 1930's/1940's two colour yellow ribbon and diamond scroll clip brooch, testing as 14ct, 14ct white back mount and platinum to the diamonds, length 36mm, width 15mm, 5.79g; a late 19th / early 20th century yellow gold, sapphire and rose cut diamond dragon toggle slide clip for scarf or chain and a medieval revival design, cabochon ruby eye, hinged slide clip aperture fitting to reverse, tests as 18ct gold and platinum, length 25mm, width 12mm, 3.3g. (3)

£200-£400



209

Butler and Wilson, An articulated collar necklace and matching earrings, circa 1985 The white metal collar style necklace centred by a circular paste set disc, the clip-on earrings of circular form centred by octagonal paste set centres, the collar with an internal diameter approximately 34cm, the earrings 4cm in diameter, one paste deficient.

£100-£150



210

An Edwardian diamond cluster bar brooch

Old brilliant, single and rose cuts, no apparent marks. mount tests as platinum, fitting tests as 14ct/15ct gold. Approx. 1.20cts of diamonds. Length 58mm. Cluster 10mm wide. (4.35g)

£200-£300

211

A five stone diamond and sapphire ring

Mount tests as 18ct gold and platinum claws, approx. 1.50cts diamonds, H/G, 12-13, approx. 2cts of oval cut sapphires, 4.40g.

£2,000-£3,000



212

A mid-late 20th century diamond full eternity ring

25 round brilliant cuts, mount tests as platinum, engraved to sides, open set, approx. 0.75cts diamonds, G/H colour, VS/SI, band width 2.6mm, £3.05g

£200-£300



213

A single stone square sapphire and 18ct white gold ring

Of Princess cut approximately 0.85ct, broad slightly tapering shank, Sheffield hallmarked 750 with EMJ sponsor mark. Sapphire 5.08 x 5.05 x approx. 3.5mm, 4.22g

£300-£500

214

A diamond and two colour gold cross-over ring in 18ct gold

£1,400-£1,800



215

A pink tourmaline, diamond, light tanzanite and 18ct white gold dress ring

The oval faceted tourmaline secured in round brilliant cut diamond set claws and to uprights, bombé shoulders grain cluster set with round faceted light purplish tanzanites, Sheffield marks for 2007, stamped also with weights corresponding with estimated gem weights: 2.65ct for the tourmaline, 9.95 x 7.75 x 5.40mm, 1.84cts for the tanzanites and 0.29cts for the diamonds, width at head 10mm, width upper shoulders 6.2mm, shank back 3.2mm, 7.75g

£1,000-£1,500



216

Two George V gold rings, together with a broken 18ct gold ring mount and a gilt base metal heart padlock

One 18ct gold signet with trace of initials, Chester 1912, 3.41g, the other 9ct gold wedding band, Birmingham 1914, 2.86g, the ring mount, Chester marks, 3.30g. (4)

£220-£250

217

A late 18th century navette shaped neoclassical pendant with figural miniature en grisaille, c.1790

In shades of brown, depicting two robed figures holding hands beneath a tree, one writing upon the trunk 'WREN PARIS' (or WHEN PARIS), gold collet frame with bright cut decoration, tested as 14ct and 9ct suspension bale, similar miniature to the reverse by a different hand in polychrome featuring lovers beneath a tree, slightly later in date, both sides glazed. Length 63mm overall, Width 33mm. 24.69g. Together with an antique oval leather box with gilt fleur-de-lys motifs.

£400-£600



218

An early 20th century Arts & Crafts style amber and white metal pendant chain necklace

The large oval shaped Baltic type amber with butterscotch areas, mounted landscape and bordered by clusters of white metal four-petal flowerheads, fringes of beads hung from a curving fringed bar on ring-link chain, necklace length worn 46cm /18", pendant 88 x 60mm, amber approx. 70 x 43 x 15mm, 172g gross

£50-£100

219

A late 19th / early 20th century citrine and gold fringe necklace

The front hung with thirteen oval faceted citrines, baton clasp, tested as 14ct gold, length 41cm / 16". Citrines each approx. 7 x 5mm, 5.33g.

£250-£350



220

A 9ct gold heart shaped pendant locket with applied rose cut diamond and gem fly motif

Glazed compartment within, stamped within '9CT', London import mark for 1976 (possibly import later, pendant looks earlier), Pendant length including loop 51mm x 39 across, £16.71g, together with a yellow chain necklace of 70cm / 27½"

£300-£500

221

A 19th century shield shaped locket

Testing as 9ct with foliate engraved detail, two oval reserves within, one missing its glass. Length 42mm, width 20mm, depth 10mm. 10.77g gross.

£140-£160





223

An early to mid-20th century rope twist chain necklace with eight ball spacers

Tests as 9ct, stamped '9K' to bolt ring clasp, length 89cm / 35", chain gauge 2.2mm, balls 5mm 17.10g.

£250-£350

224

A mid-20th century graduated retro fringe necklace, French c.1940

Triangular section tubular form links, polished finish with matt finish inside, French workshop mark, French eagle's head assay mark for gold and testing as 18ct gold, length 43cm / 17", height at front 1.7cm / 5/8", 75g.

£4,000-£6,000



225

A 19th century turquoise and pearl scroll pendant, c.1880, and chain necklace

Pendant set with split pearls and cabochon turquoise, yellow metal mounts test as 18ct, chain tests as 14, bolt ring clasp tests as 9ct, (together with 2 base metal clasps). Pendant: Length 57mm, 9.84g. Chain: Length 39.5cm / 15?", 8.31g.

£400-£600

226

A 9ct yellow gold fetter and three large link chain necklace

Birmingham import marks, stamped '9KT' and 'ITALY'

Length 50.5cm / 19 7/8", Width 6mm, gauge 1.3mm, 9.65g.

£120-£180



227

Two cultured pearl necklaces

Comprising of a two-row graduating with cabochon amethyst and seed pearl star clasp worn to the side, mounts testing as 9ct, cultured pearls range approx. 9.2mm to 5.8mm, inner row 48.5cm / 19" (clasp 24mm), 72g; the other also two-row, uniform, with antique rose cut diamond and gold flower stem forming a clasp, pearls ranging approx. 8-8.5mm, inner row 44.5cm / 17 3/4", (clasp flower 40mm long) 86g. (2)

£600-£800



228

Three pendant chain necklaces

Comprising of a sapphire and diamond drop cluster pendant in 9ct gold, 15mm long, with a fine chain necklace testing as 9ct, pendant length 15mm, chain 0.5mm gauge, length 44cm / 17 1/2", both 1.67g; a simple cross pendant stamped 'AJH 9CT' and meshlink chain testing as 9ct gold, the clasps of base metal, cross length 22mm, chain 1.4mm gauge, length 45cm / 17 3/4", both 3.83g excluding clasps; a 925 stamped pendant and chain, the pendant openwork tear-drop shape set with two blue stones, the chain of boxlinks, base metal clasp, pendant 35mm long, chain 38cm / 15", together with a gilt base metal chain section.

£80-£120



229

A late Victorian turquoise and seed pearl navette bar brooch, c.1900

In yellow metal testing as 15ct, stamped '15', the pin testing as 14ct. Length 38mm, width 9mm. 3.34g

£70-£100



230

A late 19th century silvery pearl, sapphire, ruby and diamond insect brooch, French c.1890

French gold mark 18ct, serial number 18652, tests as 18ct gold and platinum topped to diamonds. Wingspan 37mm. Height 23mm. Pearl approx. 9.0 x 7.9 x 7.8mm. 7.34g

£600-£800



231

An early 20th century diamond and sapphire cluster bar brooch, c.1910

Old round brilliant cut diamond to centre approximately 0.12ct, calibr  sapphire border, pierced and millegrain set ground, tests as platinum topped 18ct gold mount and fitting. Length 62mm, width at centre 10mm. 3.49g

£400-£500



232

A 19th century sapphire, diamond and ruby crescent and flowerhead bar brooch, c.1890

Mounted in silver and yellow gold testing as 9ct. Length 45mm, width across crescent 20mm.

£500-£700

233

A small group antique paste and costume jewellery

Comprising a late 19th / early 20th century white paste star sunburst brooch with Continental 925 stamp (35mm), two others smaller, one stamped 900 and a pair of paste and large imitation-pearl pendant earrings, millegrain set tops (26mm long)

£200-£300



234

A mid 19th century gilt metal and painted porcelain brooch depicting Christ at Prayer

The oval panel within a pierced foliate scroll-work frame with a pin fitting to the reverse, 6cm wide, 5cm high

£30-£50

235

Three antique brooches

Comprising: a later 19th century sugarloaf amethyst and paste cluster brooch, collet set in silver and gold backed mount and fitting, tests as 9ct to back, 17 x 17mm, 3.98g, amethyst approx. 12.0 x 12.0 x 8.3mm, an antique vari-coloured gem five stone bar brooch, with a peridot, orange stone probably a topaz, a sapphire, ruby and amethyst, mount tests as silver, 40mm long, 4.00g, central sapphire approx. 5 x 4mm and a late 19th century red, green and white enamel and pearl scroll bar brooch mounted in silver, length 30mm, 3.33g. (3)

£150-£250



236

An antique diamond cluster star pendant-brooch

With twelve rays, cushion, old brilliant and single cut diamonds, approximately 1.75cts in all, approx. H VS, mount tests as silver with gold to back and fittings in gold (18 and 9ct in places), width 36mm, 8.60g

£1,000-£1,500



237

A late 19th century ruby, sapphire, diamond and pearl butterfly brooch

Mount tests as silver and 14ct gold topped, brooch fittings as 9ct gold, approx 0.60cts of rubies and 0.30cts of sapphires, wingspan 35mm, height 25mm, 8.08g.

£600-£800



238

A late 19th century sapphire, ruby, diamond and pearl butterfly brooch

Mount tests as silver and 9ct gold. Approx. 2.20cts of sapphires and 0.75cts rubies.

Wingspan 41mm, height 33mm, 14.85g.

£800-£1,200





239

A late Victorian Child & Child winged-heart brooch-pendant

With blue guilloché enamel angel wings flanking a cabochon opal heart, pink topaz heart drop and diamond accent surmount, mounts tests as 9ct and silver, pendant loops to verso for wear as a pendant, Child & Child marks of C&C with sunflower and WC/HC mark for Walter & Harold Child
Length 39mm, width 22mm. 8.19g.

Together with the original fitted Child & Child case.

£2,000-3,000

Provenance: Barbara Smythe (1899-1988) of Methven Castle, Perth thence by direct decent to the current owner.

TERMS AND CONDITIONS FOR PURCHASERS IN LIVE AUCTIONS AND TIMED ONLINE AUCTIONS

1. These Terms and Conditions apply to all transactions relating to the purchase of items by a bidder (referred to as “you”) at The Pedestal Limited, trading as The Pedestal (referred to as ‘we’) in a live auction, a Timed Online Auction and in an auction after-sale.

The Terms and Conditions may not be varied unless agreed in writing in advance by one of our directors.

By registering to bid and/or bidding you accept these terms.

2. We act as agent for the seller whose identity we will not disclose, unless otherwise stated.

3. When we offer items for consignment at auction, we will usually include in the auction listing a description of the lot and an estimate of potential sale value. We may also choose to include an image or images of the lot. We offer the lot for sale in the auction as it is described in the lead line, ie. the text highlighted in bold, and not as it may be perceived to appear in any image or images which accompany the lot.

Upon request we may also supply a condition report, which will be based on a visual inspection of each lot without disassembly or further investigation of physical condition, and on information available to us at the time. All information is provided after due consideration and to the best of our knowledge and experience, but cannot be taken as a statement of fact, a guarantee or statement of value or a guarantee or statement that mechanical or electrical parts are functioning correctly or at all.

We kindly ask that condition reports be requested well in advance of the date of the auction itself. We endeavour to issue condition reports in good time but we are not able to respond accordingly if we receive a large number of condition reports in the 36 hours leading up to the date of the auction.

Please note that whilst we take every care in cataloguing furniture which has been upholstered, we offer no guarantee as to the originality or condition of the wood frame covered by fabric or upholstery.

Explanation of catalogue terms

The following wording used in the catalogue have the following meanings:

- “Richard Brachenburgh”: in our opinion a work by the artist;
- “Attributed to Richard Brachenburgh”: in our opinion probably a work by the artist;
- “Studio/Workshop of Richard Brachenburgh”: in our opinion a work by an unknown hand in a studio of the artist which may or may not have been executed under the artist’s direction;
- “Circle of Richard Brachenburgh”: in our opinion a work by a hand closely associated with a named artist but not necessarily his pupil;
- “Follower of Richard Brachenburgh”: in our opinion a work by a painter working in the artist’s style, contemporary or nearly contemporary, but not necessarily his pupil;
- “Manner of Richard Brachenburgh”: in our opinion a work in the style of the artist and of a later date;
- “After Richard Brachenburgh”: in our opinion, a copy of a known work of the artist;
- “Signed and/or dated and/or inscribed”: in our opinion the signature and/or date and/or inscription are from the hand of the artist;
- “Bears a signature and/or date and/or inscription”: in our opinion the signature and/or date and/or inscription have been added by another hand

4. All measurements provided are approximate. Colours of any image depicted in any printed catalogue, on our website or otherwise may not appear the same as colours perceived on physical inspection.

5. You have the opportunity to inspect the lot in advance of the auction at such place and times as are advertised before the auction. We always recommend inspection of a lot in person so you can form your own opinion of it. We strongly advise you to examine any lot or to have it examined on your behalf before the auction.

6. A registration form will be available upon request and must be completed in advance of the auction by anyone wishing to bid.

You will be required to provide government issued proof of identity and proof of residence and if you are a company, your certificate of incorporation or equivalent documentation with your name and registered address, and government issued proof of your current address, documentary proof of your beneficial owners and proof of authority to transact.

We may also request a financial reference and/or a deposit from you before allowing you to bid.

We reserve the rights at our discretion to request further information in order to complete our client identification and to decline to register any person as a bidder and to decline to accept their bids if they have been so registered.

A separate online fee will be levied and separate registration will be required for online bidding, whether on our own or a third party platform. When bidding on a third party platform we recommend you familiarise yourself with the additional fees payable before placing your bid.

For successful bidders on our online bidding platform – The Pedestal Live – an online bidding fee of 3% levied on the hammer price of the lot plus VAT will be charged. This is in addition to the standard buyer’s premium fee payable as set out in clause 14.

7. We may at our discretion accept bids from someone acting on behalf of a third party, subject to receiving a letter of authorisation which is satisfactory to us. In the event that such a bid is successful we reserve the right to treat either the bidder or the third party as the successful bidder for all purposes including as regards obtaining payment for the lot.

8. Auctions are conducted according to our discretion and that of our auctioneer. Bidders and buyers should be aware that the auctioneer may occasionally need to pause the auction as deemed necessary due to unforeseen circumstances.

We may refuse to allow access to the auction, refuse or accept any bid, alter the order of lots and/or the bidding in such way as we think best, withdraw any lot, reopen bidding after the hammer has fallen, determine who is the successful bidder, cancel the sale of any lot or otherwise regulate the auction and all associated proceedings as we deem most appropriate.

Our decision in relation to any dispute relating to bidding which may arise during or after the auction is final.

We may (but are not obliged to) offer bidding in person, by commission bids left with us in advance of the auction, by telephone, or online via our own or a third party platform.

Some bidders may experience technical problems in bidding for a lot which are beyond our reasonable control, such as firewalls, loss of internet connection or other technical issues to do with our bidding software, third party bidding software or their own device.

We will endeavour to fix any technical problems that occur on our site as quickly as possible, but we will not be responsible to you for any errors or failures to execute bids, or for any errors or omissions in online bidding, including without limitation, errors or failures caused by any loss of connection or faults with our bidding software or third party software.

9. Both the auction as a whole and calls used for telephone bids may be recorded and such recordings may be retained by us and by participating in the same you consent to such recording and retention.

10. Most lots are offered subject to a reserve below which the lot will not be sold. The level of the reserve is confidential between ourselves and our seller but will not be higher than the lower estimate.

11. We may enter one or more bids consecutively or otherwise on behalf of the seller up to but not beyond the level of the reserve.

12. Subject only to the auctioneer's discretion set out in clause 8 above, when the auctioneer's hammer falls no further bids will be accepted and a contract for sale is formed between the successful bidder and ourselves as agent for the seller.

13. We will endeavour to send out invoices promptly by mail or email using the contact details supplied to us by the successful bidder. If you believe that you are the successful bidder for any lot but have not heard from us within three working days of the auction we recommend that you contact us to arrange collection and avoid potential storage charges.

14. We will charge a buyer's fee of 25% on the hammer price of each lot, plus VAT.

15. Payment for each lot which you have purchased including all associated fees, charges and taxes is due no later than 7 calendar days after the auction.

Payment can be made only by the registered bidder.

Payment instructions will be given on the relevant invoice or invoices. Please note that we do not accept payment by credit card or in cash.

Payment for the lot or lots must be made in full as set out in the invoice or invoices sent out either after the auction or at the completion of the post sale transaction.

We do not accept payment made in instalments over a period of time.

For late paid invoices, we draw your attention to provisions in the Late Payment of Commercial Debts (Interest) Act 1998. We reserve the right to charge interest on late paid invoices at the rate of 8% above the bank base rate.

You warrant that the funds to be used for settlement are not connected with any criminal activity, including tax evasion, and you are neither under investigation, nor have you been charged with or convicted of money laundering, terrorist activities or other crimes.

The Pedestal is committed to the fight against money laundering and terrorist funding and compliance with relevant sanctions law. You will comply with the requirements set out in paragraph 6., as well as our requests for source of funds, and other documentation fully, accurately and promptly. We may require such information and documentation from you at our sole discretion in order to comply with our obligations under domestic and international law. If in our absolute discretion you do not satisfy our bidder identification and registration procedures, we may refuse you to register to bid, and if you make a successful bid we may cancel the sale.

16. No lot will be released and legal title will not pass to you until we have received due payment in full of all sums owed to us by you.

Risk in any lot for which you are the successful bidder will pass to you on the earlier of collection of the lot by you or on your behalf, or the due date for payment for such lot.

Our duty to you while your lot is at your risk and your property and in our custody is to exercise reasonable care in relation to it. We will however not be responsible for damage to the lot or to other persons or things as a result of it being affected for example by woodworm.

Please consult clause 18, which covers the 7 day post auction collection period and the storage charges payable thereafter.

17. If you fail to make due payment for any lot we may, at our discretion and without limitation to other available remedies, bring legal proceedings against you for the unpaid sum and all associated fees and costs including professional fees ("Unpaid Sums"); retain and sell ourselves or otherwise any other lots held by us which are your property or any sums otherwise payable by us to you and use such proceeds or sums to defray the Unpaid Sums; cancel the sale, re-offer the lot and claim any shortfall and any associated costs from you; and/or pass your identity and contact details to the seller so that they can pursue legal remedies against you directly. Additionally if you are a business customer, interest on late payments may be charged at 8% above our bank's base rate from time to time.

18. All lots must be collected from our premises as notified to you in the auction catalogue and otherwise, within 7 days after the auction. Storage and handling fees will be charged in relation to lots left uncollected after that date.

Our storage charges are as follows: Administration fee: £10; Storage: £3/day for pictures and small items and £6/day for furniture, larger pictures and objects

Full value protection cover for the value of the hammer price will be charged at 0.6% but will not exceed the total value of all other transfer and storage charges.

VAT will be applied at the current rate on any charges levied.

Any lots not collected within 90 days after the auction may be sold by us at our discretion, with the proceeds applied to cover all Unpaid Sums including storage and handling charges. In this event any surplus will be paid over to you, and we will claim any shortfall from you as an Unpaid Sum.

19. A lot which has been collected from our premises by you or a shipper acting on your behalf is deemed to have been delivered to you by us at the time of such collection.

20. If within 21 days of the auction the buyer gives us written notice to us that the lot is a forgery and demonstrates to our satisfaction that the lot is a forgery, provided that the lot is returned to us in the same condition as when it was sold and within a reasonable timescale notified by us, we will cancel the sale, refund the purchase price and the cost of reasonable return.

A ‘forgery’ is defined as a work created with the intent to deceive.

We may request that the buyer provides two written opinions (produced at the buyer’s cost) or recognised independent experts to evidence the assertion that the lot is a forgery. The lot should not be returned to us until we have requested the return, and the buyer does so at their own risk. We shall be entitled to investigate and consider the allegations that the lot is a forgery and to arrange inspections of the lot either at our premises or third party controlled premises if the lot has been exported from the UK. We shall endeavour to resolve the matter within a reasonable period of time and the buyer agrees to act in good faith whilst we carry out this assessment.

21. **For Timed Online Auctions** where lots cannot be inspected in person, if you reside mostly in the UK or the European Union and in respect of the **EU Consumer Rights Directive**, you have the right to cancel the purchase of a lot without cause at any time in the 14 calendar days after the lot is available for collection from The Pedestal.

We request that you notify us of your decision to cancel the purchase in the 14 calendar day period which should be sent either by post to:

The Pedestal, The Dairy, Stonor Park, Henley-on-Thames, Oxfordshire RG9 6HF or by email to: info@thepedestal.com

We will refund the purchase price using the same method as that used for the original purchase following our receipt of the lot and assuming it is received by us without damage.

In addition, the lot must be returned to us within the 14 calendar day period after the lot was available for collection. You will be responsible for the cost of returning the lot, namely, but not restricted to: shipping, packing, insurance and any import duties incurred.

If the lot is damaged as a result of any investigations into the nature of the lot by you or others you will account for this loss. If the lot is returned damaged, we will deduct a sum from the refund to cover the cost of repair or the loss in value which results from this damage.

Condition reports and additional images may be available to assist you in evaluating the lot. They are provided free of charge to our buyers and are for guidance only. Before bidding it is your responsibility to ensure you have requested, received and reviewed any condition report.

22. Lots which we believe to be covered by the CITES regulations will be marked with Y in our catalogue, but we are not responsible for advising you on any import/export issues including without limitation CITES or the like, and customs and import fees and the like. We recommend that you acquaint yourself with any relevant issues before bidding, as we cannot accept liability for any information which we may provide you with. If you purchase a lot requiring an export licence it is your responsibility to obtain it, and we cannot accept rescission of the sale or offer a refund if you are unable to so obtain a permit.

In certain countries local laws entitle an artist or the artist’s estate to receive a royalty when a lot created by the artist is sold, this royalty is known as ‘artist’s re-sale right’ or ARR. If these laws apply to the lot you must pay us an additional amount equivalent to the royalty due to the artist. We will pay the royalty to the appropriate authority on the seller’s behalf.

For sales completed from 1 April 2024 the royalty applies if the hammer price is equal to or greater than £1,000. The total royalty for any lot cannot exceed £12,500.

The amount owed is calculated as follows:

Royalty for the portion of the hammer price (in GBP£):

4%	up to 50,000
3%	between 50,000.01 and 200,000
1%	between 200,000.01 and 350,000
0.50%	between 350,000.01 and 500,000
over 500,000	the lower of 0.25% and £12,500

23. Each seller warrants that they are the legal owner of the lot and/or have the unencumbered right to sell the lot at auction and to pass title to the successful bidder. The seller shall not be liable in the event of breach of this warranty for any amount greater than the hammer price of the lot in question.

We are not liable for any statements, data, information and the opinions of others nor any deterioration of the lot after collection. Our total liability for negligence, breach of statutory duty, misrepresentation or otherwise shall be limited to the hammer price of the lot in question.

We shall not be liable for any loss of profits, loss of business, goodwill, loss of anticipated savings or for any special, indirect, incidental or consequential loss, costs, damages, charges or expenses to the fullest extent permitted by law.

We shall not be liable for any loss or damage that is not foreseeable; loss or damage is foreseeable if it is an obvious consequence of our breach or if it was contemplated by you and us at the time this contract was formed.

We may be liable only to the successful bidder in the event of fraud or fraudulent misrepresentation by us and exclude all other liability to such bidder and all third parties to the fullest extent permitted by law.

Nothing herein shall limit your rights, if any, under the Consumer Contracts Regulations, or exclude our liability for death or personal injury caused by our negligence.

24. General Terms:

a. These terms are made and must be construed under English law and any disputes arising from them or from the Contract will be subject to the exclusive jurisdiction of the courts of England and Wales.

b. All charges, fees, premiums and any other sums referred to herein or arising here from are stated net of Value Added Tax but are subject to VAT or the like at the rate or rates prevailing at the time of any transaction. VAT is not chargeable on the hammer price unless otherwise stated.

c. We will hold and process your personal data according to the conditions, for the reasons and on the bases set out in our Privacy Policy which may be accessed on The Pedestal website and as envisaged by these terms and conditions.

d. We retain copyright in all images and written and other materials prepared by us, which may not be used by you without our prior written consent.

Please note: The Pedestal's online auction catalogue browsing, live online bidding and buying is provided on our site by Auction Mobility, 192 South Street, Suite 600, Boston, MA 02111, USA.

Auction Mobility's Terms of Use of the Site and Privacy Policy are available on this domain.

Updated: March 26, 2024



The Pedestal

The Dairy, Stonor Park, Henley-on-Thames, Oxfordshire RG9 6HF
www.thepedestal.com | info@thepedestal.com | +44 (0)207 281 2790