

PUBLIC ONLINE AUCTION

INSPECT ONSITE AND BID ONLINE

SHEET METAL FABRICATION & CNC MACHINE SHOP

TIMED ONLINE AUCTION: TUESDAY, MAY 14 STARTING AT 10:00 AM PDT

INSPECTION: MONDAY, MAY 13 FROM 9:00 AM TO 3:00 PM PDT

LOCATION: 1410 S. CUCAMONGA AVENUE, ONTARIO, CA 91761



1998 AMADA LASMAC LC2415A2 CX II LASER, 1994 FINN-POWER TURRET PUNCH, KOMATSU 55 TON PRESS BRAKE, WYSONG 1252-HD SHEAR, 2006 FADAL VMC6030HT & 1995 VMC15XT VERTICAL MACHINING CENTERS, 2017 APEX EZ & TIMESAVERS BELT SANDERS, ACME SPOT WELDER, 2006 PEM INSERTION PRESS, JET SLIP ROLLS, DI-ACRO DIE GRINDER, KENT KLS-1440 LATHE, BIRMINGHAM MILL, 2017 KALAMAZOO KMT COLD SAW, DOALL C-916S HORIZONTAL BAND SAW, WELDER, DRILL PRESSES, CURTIS AIR COMPRESSORS, WELDING TABLES, PRESS BRAKE DIES, METAL MATERIAL, CANTILEVER & PALLET RACKING, KOMATSU FORKLIFTS, 2006 FORD F-150 PICKUP TRUCK, INSPECTION, POWER TOOLS AND RELATED ITEMS



UNITED
ASSET SALES
ROY GAMITYAN, AUCTIONEER

ROY GAMITYAN, AUCTIONEER

23945 Calabasas Road, Suite 209, Calabasas, CA 91302
Office 818.264.4232 | roy@unitedassetsales.com

WWW.UNITEDASSETSALES.COM

PUBLIC ONLINE AUCTION

INSPECT ONSITE AND BID ONLINE

SHEET METAL FABRICATION & CNC MACHINE SHOP

TIMED ONLINE AUCTION:

TUESDAY, MAY 14 STARTING AT 10:00 AM PDT

INSPECTION:

MONDAY, MAY 13 FROM 9:00 AM TO 3:00 PM PDT

INSPECTION LOCATION:

1410 S. CUCAMONGA AVENUE, ONTARIO, CA 91761

TERMS OF PAYMENT:

CASHIER'S CHECK, BUSINESS CHECK WITH BANK LETTER OF GUARANTEE, BANK WIRE TRANSFER. FULL PAYMENT MUST BE MADE NO LATER THAN 24 HOURS OF WINNING BID.

REMOVAL:

ALL ITEMS MUST BE REMOVED NO LATER THAN WEDNESDAY, MAY 22. NO EXCEPTIONS. PREPPING, REMOVAL, LOADING & TRUCKING IS THE RESPONSIBILITY OF THE BUYER.

BUYER'S PREMIUM:

18% FOR ALL PURCHASES.

FOR COMPLETE SALE INFO: 818.264.4232
OR VISIT WWW.UNITEDASSETSALES.COM
EMAIL: ROY@UNITEDASSETSALES.COM

ONLINE BIDDING PROVIDED BY

BidSpotter



UNITED
ASSET SALES
ROY GAMITYAN, AUCTIONEER

WWW.UNITEDASSETSALES.COM

23945 Calabasas Rd., Ste. 209, Calabasas, CA 91302

Office 818.264.4232 | roy@unitedassetsales.com

ROY GAMITYAN, AUCTIONEER

FABRICATION & MACHINE SHOP SUPPORT EQUIPMENT

1994 FINN-POWER TP25201F2/21/NOVA
TURRET PUNCH, S/N 7.7-252018694

2017 APEX EZ3760M460-3 SANDER,
SINGLE HEAD, 36" BELT, GRIVNA WET
DUST COLLECTION SYSTEM, S/N 170302,
W/ APEX PWDC-5 PORTABLE WET DUST
COLLECTOR, S/N 170294

2017 KALAMAZOO KMT C370SA-V COLD
SAW, 14", SEMI AUTOMATIC, VERTICAL
COLUMN, S/N 171940001

TIMESAVERS 125 M-1 SANDER, S/N 9378

DOALL C-916S HORIZONTAL BAND SAW
CENTRAL MACHINERY & JET DRILL
PRESSES

BALDOR SANDER, 1" BELT

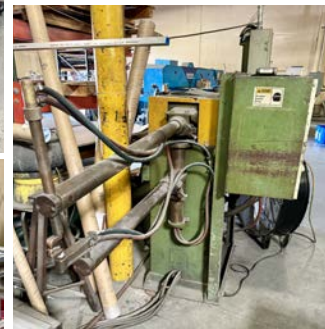
DELTA DISC/BELT SANDER

DEWALT CUT-OFF SAW
STRIPPIT HOUDAILLE
PUNCH & DIE GRINDER,
S/N 85010-000

(2) JET HAND ROLLS

BIRMINGHAM VERTICAL
MILL, MITSUBISHI DRO,
POWER FEED

KENT KLS-1440 LATHE,
6" CHUCK, TAILSTOCK



CNC CO2 LASER

1998 AMADA LASMAC LC2415A2, FANUC SERIES 16-L CNC CONTROL, 2000-WATT, 3.0 KW, 60" X 100" SHEET SIZE, XYZ TRAVELS: 61" X 99" X 11", KOOLANT KOOLER, DUST COLLECTOR, S/N 12415385



CNC VERTICAL MACHINING CENTERS

2006 FADAL VMC6030HT, FADAL MULTI PROCESSOR CNC CONTROL, TRAVELS: 60" X 30" X 30", 62" X 30" TABLE, 20 HP, 10000 RPM, 40 TAPER SPINDLE, 21 ATC, HENNIG CHIP CONVEYOR, COOLANT, S/N 032005017290

1995 FADAL VMC15XT, FADAL CNC 88HS CONTROL, TRAVELS: 30" X 16" X 20", 39" X 16" TABLE, 7500 RPM, 40 TAPER SPINDLE, 21 ATC, S/N 9505721



2006



SHEAR

WYSONG 1252-HD, 10 GAGE X 4' CAPACITY, MECHANICAL, SQUARING ARM, S/N P18-116



CNC PRESS BRAKE

1994 KOMATSU PHS50X200, KPAPS III CONTROL, 55 TON X 6' CAPACITY, 6.5 RAM STROKE, 13.0 OPEN HEIGHT, HYDRAULIC, S/N K0001



HARDWARE INSERTION PRESS

2006 HAEGER SERIES 4, 6 TON CAPACITY, 18" THROAT, S/N J4-3521



2006

AIR COMPRESSORS



CURTIS RS20A A-E B101 ROTARY SCREW TYPE, 20 HP, 150 PSI, S/N 01K040002

CURTIS MODEL T30, 15 HP

FABRICATION & MACHINE SHOP SUPPORT EQUIPMENT CONTINUED

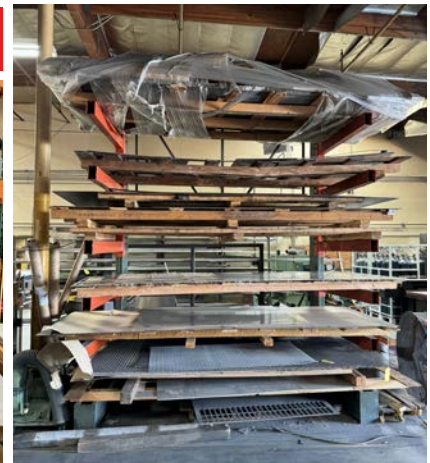
ACME SPOT WELDER, MODEL 3-42-100, 100 KVA, 32" ARMS, S/N 11470

DELTAWELD 450 WELDER

INSPECTION TOOLS AND GRANITE SURFACE PLATE

KURT MACHINE VISES

CANTILEVER & PALLET RACKING, WELDING TABLES, METAL CARTS, SHEET & TUBE METAL MATERIALS



PUBLIC ONLINE AUCTION

INSPECT ONSITE AND BID ONLINE

SHEET METAL FABRICATION & CNC MACHINE SHOP

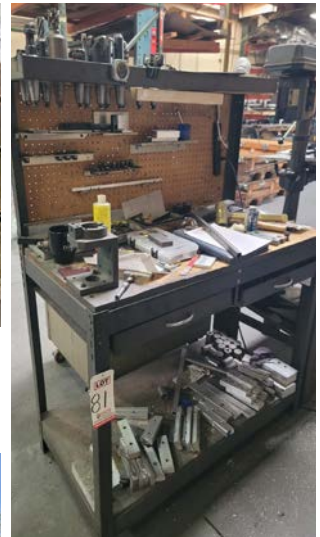
TIMED ONLINE AUCTION: TUESDAY, MAY 14 STARTING AT 10:00 AM PDT

INSPECTION: MONDAY, MAY 13 FROM 9:00 AM TO 3:00 PM PDT

LOCATION: 1410 S. CUCAMONGA AVENUE, ONTARIO, CA 91761



1998 AMADA LASMALC LC2415A2 CX II LASER, 1994 FINN-POWER TURRET PUNCH, KOMATSU 55 TON PRESS BRAKE, WYSONG 1252-HD SHEAR, 2006 FADAL VMC6030HT & 1995 VMC15XT VERTICAL MACHINING CENTERS, 2017 APEX EZ & TIMESAVERS BELT SANDERS, ACME SPOT WELDER, 2006 PEM INSERTION PRESS, JET SLIP ROLLS, DI-ACRO DIE GRINDER, KENT KLS-1440 LATHE, BIRMINGHAM MILL, 2017 KALAMAZOO KMT COLD SAW, DOALL C-916S HORIZONTAL BAND SAW, WELDER, DRILL PRESSES, CURTIS AIR COMPRESSORS, WELDING TABLES, PRESS BRAKE DIES, METAL MATERIAL, CANTILEVER & PALLET RACKING, KOMATSU FORKLIFTS, 2006 FORD F-150 PICKUP TRUCK, INSPECTION, POWER TOOLS AND RELATED ITEMS



FORKLIFTS

2006 KOMATSU F030SHT-16, 5,000 LB CAPACITY, LPG, 3-STAGE MAST, SOLID TIRES, LOAD LIGHTS, S/N 203489

KOMATSU FG-25ST11, 4,000 LB CAPACITY, LPG, 3-STAGE MAST, SOLID TIRES, LOAD LIGHTS, S/N 401078A

TRUCK

2006 FORD F-150 PICK-UP, 4.6 L, GASOLINE, APPROX. 165,034 MILES, VIN: 1FTRF12W86KB50254, LIC: 58568T1



2006

