

## TEXAS MULTI-LOCATION AUCTION

Houston | Waco | Wichita Falls

Multiple Shop Closures featuring Surplus from Precision CNC, Metal Machining, Fabrication, Paint, Blast & Cure Shops and much more!

**Auction:** February 12, 11am CT

**Inspection:** Houston - Feb. 11, 9-3PM

Other locations by appointment only

**Locations:** Houston, Waco & Wichita Falls, TX

REGISTER & BID TODAY!



MAZAK QUICK TURN 350 CNC LATHE



HYUNDAI KIA SKT 400 CNC LATHE



DISA GOFF PASS THROUGH BLAST UNIT



QINGDAO PASS THROUGH BLAST UNIT



AMADA 4000 WATT  
CO2 LASER CUTTING MACHINE



MAZAK NEXUS 6000-II  
CNC HORIZONTAL MILLING CENTER

REGISTER AT  
www.HARRIS-AUCTIONS.com

PRE-AUCTION OFFERS  
INVITED ON MAJOR ASSETS

COMPLETE CATALOG & INFORMATION  
WWW.HARRIS-AUCTIONS.COM

Harris Auctions  
sales@harris-auctions.com  
713-462-5800

Proud members of:





Lot 5046

Disa Goff Pass Through Blast Unit



Lot 5047

Qingdao Hanger Spinner Blast Unit



Lot 5048

Qingdao Pass Through Blast Unit



Lot 5070

Kaiser AS 20 T Rotary Screw Air Compressor



Lot 5056

Baileigh Model MB-90-NCE-2 Pipe Bender



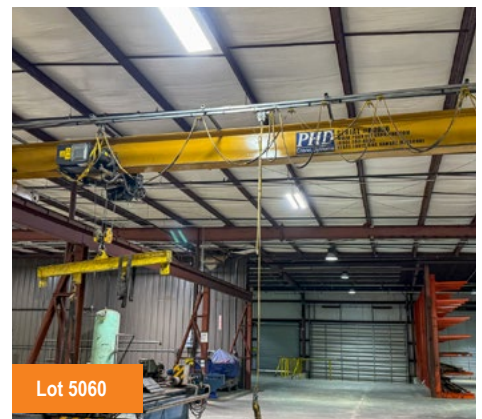
Lot 5072

Jenny 2040-C Parts Washer



Lot 5035

Faro Arm Gage on Granite Table



Lot 5060

3 Ton Overhead PHD Crane System with  
3 Ton Street Electric Hoist





Lot 5076

Shop Fox Model W1712 Belt and Disc Sander



Lot 5054

Power Feed Conveyor on Casters



Lot 5057

DoAll Model C-4 Band Saw



Lots 5028 - 5031

Silent Hoist 26,000 Lb. Capacity Forklift Model FKS13



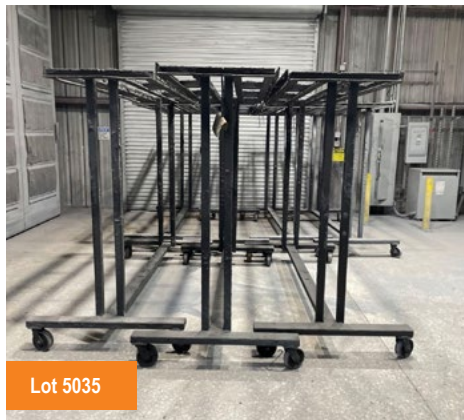
Lots 5022 - 5027

Multiple Paint Booths & Ovens in walk-in and pass-through configurations



Lots 5033 - 5034

Nordson Powder Canisters



Lot 5035

Multiple Heavy Duty Powder Coating Cart Part Hangers



Lots 5063 - 5065

Multiple 7 Section Adjustable Cantilever Racks

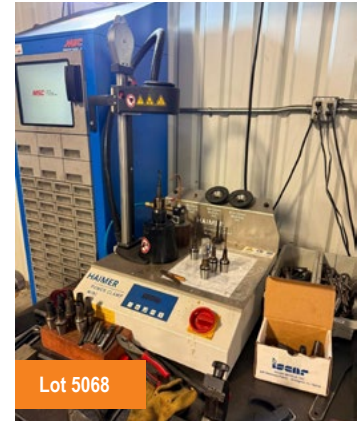




18" x 60" Hwacheon Engine Lathe



Lagun EVS Vertical Milling Machine



Haimer Power Clamp Mini Shrink Fit Tool System



Vevor N0.3 Arbor Press on Metal Base



Transfluid DB2060K Pipe Bending Machine



Baileigh Model MB-90-NCE-2 Pipe Bender



Multiple Lots of Electric Motors & Drives