

# LIVE WEBCAST **ONLINE ONLY** AUCTION



**Surplus to the Ongoing  
Operations of AGI, a  
Leading Food Infrastructure  
& Processing Systems  
Manufacturer – Grand Island,  
NE Facility Closure**

## **SALE DATE**

Thursday, June 19, at 10 AM CT

## **SALE LOCATION**

2928 E. Highway 30  
Grand Island, NE 68801

## **INSPECTION**

Wednesday, June 18, from 9 AM  
to 4 PM CT, or by appointment

## **COMPLETE CATALOG & INFORMATION:**

<https://perfection.global/agi>

**FEATURING:** PACIFIC 300 OBL-8  
Straight Side Hydraulic Press,  
GREENERD 325 Ton Press, PACIFIC  
500 Ton x 30' Press Brake, (2)  
PACIFIC K225 X 20' Press Brakes,  
Other Brakes up to 135 Ton,  
AMERICOR LH-150/6 Bending Roll,  
BPR CPH60REV Bending Roll, (2)  
Angle Bending Rolls, HYD-MECH  
S-23A Horizontal Band Saw, Coil  
Lines & Feeds, Forklifts, Pallet  
Wrapper, GROVE Articulating  
Boom Lift, SUPERIOR 5 Ton Free-  
Standing Crane System, Facility  
Support & Much More!



GREENERD 4D-325 4-POST HYDRAULIC PRESS



PACIFIC 500-30 HYDRAULIC PRESS BRAKE



PACIFIC 300 OBL-8 STRAIGHT SIDE  
HYDRAULIC PRESS



**PERFECTION  
Industrial Sales**

**Perfection Industrial Sales**  
ph +1-847-545-6374 • fax +1-847-427-8884  
[www.perfectionindustrial.com](http://www.perfectionindustrial.com)

Bidding Available Through  
**BidSpotter**



# HYDRAULIC PRESSES & COIL LINES

## HYDRAULIC PRESSES & COIL LINES

**GREENERD 4D-325 4-POST HYDRAULIC PRESS**, s/n 87T4182, w/ 325 Ton Capacity, 72" x 62" Between Posts, 80" x 90" Total Bed & Ram Area, 15" Ø Main Cylinder, Approx. 7" Ø Posts, Infeed/Outfeed Conveyors, Top Mounted Hydraulic System w/ Approx. 50 HP Motor, Serapid Infeed & Outfeed Conveyors

**PACIFIC 300 OBL-8 STRAIGHT SIDE HYDRAULIC PRESS**, s/n A1445, w/ ALLEN BRADLEY PANELVIEW 600 Control, 300 Ton Capacity, 225 Ton Punch Capacity, 48" x 102" Bed, Dual Palm Buttons, 2.5 Ton Max Ram Die Weight

**CWP COIL LINE**, w/ SMX30 Servomax II 0.78"x 30" Servo Feed, s/n 056987, 30 PTT11 0.125"x 30" Threading Table, s/n 05698PT, 30C 0.021"-0.078" x 30" Straightener, s/n 056987STR, 4.5R-30 10,000 lb. x 60" OD x 30" Uncoiler, s/n 056987-SR (Used with Pacific 300 OBL-8 Press, Offered Separately)

**NIAGARA SC2-200-60-42 STRAIGHT SIDE PRESS**, s/n 40606, w/ 200 Ton Capacity, 8" Stroke, 25" Shut Height, 10" Adjustment, 60" x 42" Bed & Ram, 30 SPM

**DALLAS / LITTELL COIL LINE**, w/ Dallas D400 24X24RH 24" Feeder/Straightener, s/n 18424, LITTELL No. 60-36 Auto Centering Reel, s/n S5599-73, 6000 lb. Capacity, 16-20"ID, 48" Max. OD, 36" W, (Used with Niagara SC2-200-60-42, Offered Separately)



PACIFIC 300 OBL-8 STRAIGHT SIDE HYDRAULIC PRESS



GREENERD 4D-325 4-POST HYDRAULIC PRESS



NIAGARA SC2-200-60-42 STRAIGHT SIDE PRESS



CWP UNCOILER & STRAIGHTENER



CWP SMX30 SERVO FEED



LITTELL 60-36 AUTO CENTERING REEL



DALLAS D400 24X24RH FEEDER/ STRAIGHTENER



# HYDRAULIC PRESS BRAKES, TUBE MACHINERY

## HYDRAULIC PRESS BRAKES

**PACIFIC 500-30 HYDRAULIC PRESS BRAKE**, s/n 3536, w/ 500 Ton x 30' Overall Length, 5/16" @ 20' Bending Capacity, 22'5" Between Housings, 12" Bed Width, 42" Backgauge

**PACIFIC K225-20 HYDRAULIC PRESS BRAKE**, s/n 5697, w/ PC Control, 225 Ton x 20' Overall Length, 3/16" @ 18' Bending Capacity, 18'6" Between Housings, 8" Bed Width, AUTOMEC AUTOGAUGE G24 Backgauge

**PACIFIC K225-20 HYDRAULIC PRESS BRAKE**, s/n 8035, w/ 225 Ton x 20' Overall Length, 3/16" @ 18' Bending Capacity, 18'6" Between Housings, 8" Bed Width

**PACIFIC J135-12 HYDRAULIC PRESS BRAKE**, s/n 8012, w/ 135 Ton x 12' Overall Length, 3/16" @ 11' Bending Capacity, 10'6" Between Housings, 8" Bed Width

**PACIFIC J110-12 HYDRAULIC PRESS BRAKE**, s/n 8237, w/ PC Control, 110 Ton x 12' Overall Length, 10'6" Between Housings, 10 Ga. @ 12' Capacity, AUTOMEC AUTOGAUGE G24 Backgauge

**CHICAGO DREIS & KRUMP 458-D MECHANICAL PRESS BRAKE**, s/n P-8168, 1/4" @ 8' Capacity, 102" Between Housing, Dual Palm Buttons



PACIFIC 500-30 HYDRAULIC PRESS BRAKE



PACIFIC K225-20 HYDRAULIC PRESS BRAKE



PACIFIC K225-20 HYDRAULIC PRESS BRAKE



PACIFIC J135-12 HYDRAULIC PRESS BRAKE



PACIFIC J110-12 HYDRAULIC PRESS BRAKE

## TUBE MACHINERY

**2014 MODERN 6MNC CNC TUBE CUT-OFF**, s/n 6MNC63, w/ Fanuc Oi-TD, 1" - 7" OD, 1" Max. Wall Thickness, 50" Outfeed Length, Table Will Hold 24' Material, 8 Tool Disc Style Turret, Collets, Guide Tubes (Located in Plainfield, IN)

**For auction inquiries,  
please contact  
Jennifer Reiner  
(847) 545-6374**

**jennifer@perfectionindustrial.com**



MODERN 6MNC CNC TUBE CUT-OFF



# BENDING ROLLS, BAND SAWS, MISC. MACHINERY

## BENDING ROLLS

HENDLEY BELOIT 4-H 14 GA. X 120" 3-ROLL PLATE BENDING ROLL, s/n 16687  
AMERICOR LH-160/6 3-ROLL PLATE BENDING ROLL, s/n 3100274  
2008 IMCAR CPHV60 ANGLE BENDING ROLL, s/n B 3031742  
BPR CPH 60 REV ANGLE BENDING ROLL, s/n 9910063  
BUFFALO 3-ROLL ANGLE BENDING ROLL, s/n na



HENDLEY BELOIT 4-H 3-ROLL PLATE BENDING ROLL



AMERICOR LH-160/6 3-ROLL PLATE BENDING ROLL



IMCAR CPHV60 ANGLE BENDING ROLL

## BAND SAWS

HYD-MECH S-23A HORIZONTAL BAND SAW, s/n XA0100098, w/ 16" x 18" Capacity, 5 HP  
HYD-MECH S-20 HORIZONTAL BAND SAW, s/n 20790657, w/ 13" x 18" Capacity, 3 HP  
STARTRITE 216H VERTICAL BAND SAW, s/n 14479, w/ 15.5" Throat, 26" x 26" Table, BSO-25 Blade Welder



HYD-MECH S-23A HORIZONTAL BAND SAW



STARTRITE 216H VERTICAL BAND SAW



BUFFALO 3-ROLL ANGLE BENDING ROLL

## MISC. MACHINERY

FRYER MB16Q CNC MILLING MACHINE, s/n 16137, w/ TOUCH 2100 Control, 18" x 70" Table, 7.5 HP, Power Draw Bar, 60"X, 25"Y, 24"Z, 4500 RPM  
FRYER MB16Q CNC MILLING MACHINE, s/n 16097, w/ ANILAM 5000M Control, 18" x 70" Table, 7.5 HP, Power Draw Bar, 60"X, 25"Y, 24"Z, 4500 RPM  
FRYER MB16Q CNC MILLING MACHINE, s/n 16024, w/ ANILAM 1400 Control, 18" x 70" Table, 7.5 HP, Power Draw Bar, 60"X, 25"Y, 24"Z, 4500 RPM



FRYER MB16Q CNC MILLING MACHINES



SUPERMAX SRD-1000 4' RADIAL ARM DRILL



CADILLAC 17" X 80" LATHE



# MISC. MACHINERY, WELDING

## MISC. MACHINERY (CON'T)

**BRIDGEPORT SERIES I MILLING MACHINE**, s/n na, 2 HP, 9" x 48" Power Feed Table, Power Draw Bar, Acu-Rite 3-Axis DRO

**EXACTO 942B MILLING MACHINE**, s/n 101645, w/ 9" x 42" Power Feed Table, 2 HP, 80-2720 RPM Spindle Speed

**SUPERMAX SRD-1000 4' RADIAL ARM DRILL**, s/n 712165, w/ 9" Column, 63-2900 RPM, Box Table

**CADILLAC 17" X 80" LATHE**, s/n 868352, w/ 10" 3-Jaw Chuck, Steady Rest, Aloris Quick Change Tool Post, Tailstock, 32-1800 RPM, Additional 12" 4-Jaw Chuck

**CHEVALIER FSG-3A1224H AUTOMATIC RECIPROCATING SURFACE GRINDER**, s/n P3878002

**(2) NIAGARA NO. 180 ROTARY CRIMPING AND BEADING MACHINES**, s/n 65315 & 68660

**2013 HANSFORD DAVIS 15 1.5" KEYSEATER**, s/n 15-1769, w/ Assorted Broaches and Tooling

**ALSO: DAKE** 50-Ton H-Frame Hydraulic Press, s/n 1130190, **(2) CLAUSING 2275 20" Drill Presses**, s/n 520410 and na, 150-2000 RPM, 10" Throat, 15.5" x 18" Table, 1.5 HP, **SOLBERGA SE2030M Drill Press**, s/n 400794, 12.5" Throat, 90-3610 RPM, 2 HP, **BALDOR 7307 7" Pedestal Grinder**, s/n W398, .5 HP, 3600 RPM, **TOOLMASTER Dual End Grinder**, 6" Belt Sander, **FAMCO No. 3 Arbor Press**, **PRYORMARK Series 2000 2M3500 Marking Press**, s/n 000781



HANSFORD DAVIS 15 1.5" KEYSEATER

## WELDING

**(3) MILLER XMT304 CC/CV Multiprocess Welders w/ MILLER 22A Wire Feeders**; **(4) MILLER XMT304 CC/CV Multiprocess Welders w/ MILLER 70 Series Wire Feeders**; **MILLER XMT 304 CC/CV Multiprocess Welder w/ MILLER Suitcase 12RC Wire Feeder**; **MILLER Axxess 450-DI Multiprocess Welder**; **LINCOLN DC-655 Multi Process Welder**; **(4) MILLER Deltaweld 452 MIG Welder w/ 70 Series Wire Feeders**; **MILLER Deltaweld 452 MIG Welder w/ 22A Wire Feeder**; **(4) LINCOLN Idealarc CV 305 MIG Welder w/ LF-72 Wire Feeders**; **(2) MILLER Deltaweld 302 MIG Welder w/ 22A Wire Feeders**; **MILLER Deltaweld 302 MIG Welder w/ 70 Series Wire Feeder**; **FRONIUS TransPuls Synergic 4000 CMT MV MIG Welder**; **ESAB MIG 4002C MIG Welder**; **MILLER S-74 MPa Plus Wire Feeder**; **MILLER 70 Series Wire Feeder**; **NELWELD 4500 Model 101 Stud Welder**; **HYPERTHERM G3 Series Powermax 1000 Plasma Cutter**; **HYPERTHERM Powermax 600 Plasma Cutter**; **ESAB Powercut 875 Plasma Cutter**; Various Drums of **NATIONAL STANDARD** and **ESAB** Welding Wire, Welding Tables, Welding Consumables, Clamping and Snorkel Fume Extractors



CHEVALIER FSG-3A1224H AUTOMATIC SURFACE GRINDER



NIAGARA NO. 180 ROTARY CRIMPING AND BEADING MACHINE



HUGE WELDING DEPARTMENT



MILLER XMT304 CC/CV MULTIPROCESS WELDER



MILLER AXCESS 450-DI MULTIPROCESS WELDER



LINCOLN DC-655 MULTI PROCESS WELDER



MILLER DELTAWELD 452 MIG WELDER



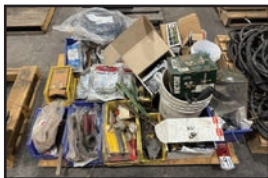
LINCOLN IDEALARC CV 305 MIG WELDER



HYPERTHERM G3 POWERMAX 1000 PLASMA CUTTER



BARRELS OF WELDING WIRE



PALLET OF WELDING SUPPLIES

**PRE-AUCTION OFFERS INVITED ON MAJOR ASSETS**



# FORKLIFTS & AERIAL LIFT, PLANT SUPPORT

## FORKLIFTS & AERIAL LIFT

**HOIST HKS-11 22,000 LB. LP FORKLIFT**, s/n 20860, w/ 6' Fork Length

**NISSAN MU1F2A25LV 4,000 LB. LP FORKLIFT**, s/n U1F2-9J0393, w/ Side Shift, 3-Stage Mast, 48" Fork Length

**(2) NISSAN MU1F2A25LV 4,000 LB. LP FORKLIFTS**, (Not in Running Condition)

**NAMCO 2015 2,000 LB. STANDUP ELECTRIC FORKLIFT**, s/n 04062

**GROVE AMZ39NE ARTICULATING BOOM LIFT**, s/n 250369, w/ 500 Lb. Load Rating, 33' Max. Platform Height



NISSAN MU1F2A25LV LP FORKLIFT



GROVE AMZ39NE ARTICULATING BOOM LIFT



HOIST HKS-11 LP FORKLIFT

## PLANT SUPPORT

**\*NEVER USED\* SUPERIOR 5-TON FREE STANDING BRIDGE CRANE SYSTEM**, w/ 5-Ton DETROIT Hoist Electric Hoist, Pendant Control, (14) 9'5" Uprights, (12) 25' Runway Beams, Approx. 40'7" Bridge Span, Electrical Rail, Drawings Available

**ALSO:** CAT 40 Tool Holders, KURT Machine Vises, Lathe Chucks, RIDGID Pipe Threader, Pipe Dies, Pipe Wrenches, Mag Drills, Power Tools, Cordless Tools, Hand Tools, Ladders, Tool Boxes, Self Dumping Hoppers, Inspection Items Including Granite Surface Plates, Digital Calipers, Portable Hardness Testers, Parallel Sets, Precision Squares, Digital Gaging Instruments, DILLON Dynamometers, Spreader Bars, Sheet Lifts, Coil Hooks, Lifting Chain and Slings, Pallet Jacks, Hoists, Shop Carts, Shop Fans, Strapping Machines, Banding Carts, Saw Horses, Maintenance Crib, and More



SUPERIOR 5-TON FREE STANDING BRIDGE CRANE SYSTEM



CAT 40 TOOL HOLDERS



KURT MACHINE VISES



TOOL BOXES



SELF-DUMPING SCRAP HOPPERS



WORK TABLES

For auction inquiries, please contact Jennifer Reiner at  
(847) 545-6374 or [jennifer@perfectionindustrial.com](mailto:jennifer@perfectionindustrial.com)

View our current auction schedule at [www.perfectionindustrial.com](http://www.perfectionindustrial.com)

### SALE DATE

Thursday, June 19, at 10 AM CT

### SALE LOCATION

2928 E. Highway 30  
Grand Island, NE 68801

### INSPECTION

Wednesday, June 18, from 9 AM  
to 4 PM CT, or by appointment

### REMOVAL

All items must be removed no later than Wednesday, July 9. All removal is strictly on an appointment only basis. Anyone removing purchased items with a lift truck or another powered vehicle must have a certificate of insurance with a \$2M General Liability policy, the policy must include a Worker's Compensation rider, and that certificate of insurance must be provided to the auctioneer for review and approval prior to the auction.

### TERMS OF SALE

An 18% Buyer's Premium will be charged on all assets purchased by buyers providing full payment is made within 48 hours following the sale. Acceptable forms of payment are cashier's check, company check (with bank letter of guarantee) or wire transfer within 48 hours of the sale close. For any Buyers failing to pay within the 48 hour stated payment period, the Buyer's Premium will be increased to 20%. All invoices paid with a credit card are subject to a 20% Buyer's Premium, and credit card payments are only allowed up to a maximum of \$2,000 per auction. Everything will be sold to the highest bidder, in accordance with the Auctioneer's customary "Terms of Sale", copies of which will be posted on the Auctioneer's website and subject to additional terms announced the day of sale. All items are sold "As is, Where is" without any warranty, express or implied.

### FURTHER INFORMATION

For auction inquiries, please contact Jennifer Reiner at (847) 545-6374 or [jennifer@perfectionindustrial.com](mailto:jennifer@perfectionindustrial.com).

Bidding Available Through

**BidSpotter**