

2 LOCATION ONLINE AUCTION

SPM™ Oil & Gas

A Caterpillar Company

Surplus to Ongoing Operations of
**SPM Oil & Gas and Caterpillar
Precision Pins**

SALE CLOSING

Tuesday, June 24, at 10 AM CT

SALE LOCATION

7601 Wyatt Dr., Fort Worth, TX 76108
1335 N Wise Dr., Sumter, SC 29150

INSPECTION

Monday, June 23, from 9 AM to
3 PM CT, by appointment only

**PRE-AUCTION
OFFERS INVITED
ON MAJOR ASSETS**

COMPLETE CATALOG & INFORMATION:

<https://perfection.global/spm062425>

FEATURING: MAZAK QTN 400 II Turning Center, OKUMA LB-35-II Turning Center, OKUMA Crown 1420 CNC Lathe, (3) OKUMA 2SP-35HG 2-Spindle CNC Lathe, (6) MURATEC MW-200 2-Spindle CNC Lathe, L&L MACHINERY LL950-4000 CNC Lathe, MORI SEIKI ZT2500Y CNC Lathe, OKUMA LT-300M Twin Star CNC Lathe, MORI SEIKI NH5000 DCG/50 CNC HMC, DOOSAN VC 3600 4-Axis VMC, JOHNFORD DMC-1600H 4-Axis Bridge Mill, RAYMOND Sideload Forklift, AIMCO SAJ900-6-P9 Integrated Jib Crane System, BIG JOE BIG LIFT T-40 Tugger, and NILFISK-ADVANCE Condor 4530C Floor Scrubber



L&L MACHINERY LL950-4000 CNC LATHE



(1 OF 6) MURATEC MW-200 DUAL SPINDLE TURNING CENTER



**PERFECTION
Industrial Sales**

Perfection Industrial Sales
ph +1-847-545-6374 • fax +1-847-427-8884
www.perfectionindustrial.com

Bidding Available Through
BidSpotter

TURNING CENTERS

TURNING CENTERS

2009 L&L MACHINERY LL950-4000 CNC LATHE, s/n 1139950090, w/ FANUC Oi-TD Control, 22" & 24" 3-Jaw Front & Rear Chucks, 37" Swing, 157" Center Distance, 9" Spindle Hole, 12 Position Turret, Omni Rest, Chip Conveyor, Coolant, No Tooling or Workholding Jaws Included (Located in Fort Worth, TX)

2008 MAZAK QTN 400 II TURNING CENTER, s/n 201900, w/ MATRIX Control, 18" 3-Jaw Chuck, 80" Center Distance, 5.19" Spindle Hole, 12/12 Pos Turret, Superflow T8 1000 Coolant System, Chip Conveyor, No Tooling or Workholding Jaws Included (Located in Fort Worth, TX)

2011 OKUMA LB-35-II TURNING CENTER, s/n 155575, w/ OSP-P200L Control, 15" 3-Jaw Chuck, 3.5" Spindle Hole, 12 Pos Turret, Chip Conveyor, Coolant, No Tooling/Mist Collector or Workholding Jaws Included (Located in Fort Worth, TX)

2004 MORI SEIKI ZT2500Y TWIN TURRET TURNING CENTER, s/n ZT250DG0152, w/ FANUC MSG-501 Control, 27.7" Swing Over Bed, 13.7" Max. Turning Length, 3.5" Spindle Hole, (2) Turrets, (2) Bar Feeds, Live Milling, Chip Conveyor (Located in Sumter, SC)

2006 OKUMA LT-300M TWIN STAR 2 TURRET CNC LATHE, s/n 124143, w/ OSP-P200L CNC Control, 21.6" Swing, 39" Length, Twin Spindle & Turret, Live Milling, LNS Bar Feeder/Loader (Located in Sumter, SC)

2001 OKUMA CROWN 1420 TURNING CENTER, s/n 0364, w/ OSP-U10L CNC Control, 15" 3-Jaw Chuck, 40" Center Distance, 12 Pos Turret, 3.5" Spindle Hole, Chip Conveyor, Coolant, Mist Collector, No Tooling or Workholding Jaws Included (Located in Fort Worth, TX)



L&L MACHINERY LL950-4000 CNC LATHE



MAZAK QTN 400 II TURNING CENTER



OKUMA LB-35-II TURNING CENTER



MORI SEIKI ZT2500Y TWIN TURRET TURNING CENTER



OKUMA LT-300M TWIN STAR 2 TURRET CNC LATHE



2001 OKUMA CROWN 1420 CNC LATHE

DUAL SPINDLE CNC LATHES, BRIDGE MILL, MACHINING CENTERS

DUAL SPINDLE CNC LATHES

(6) 2013-2011 MURATEC MW-200 DUAL SPINDLE TURNING CENTERS, See Catalog for s/n's, w/ FANUC 32iA Control, (2) 8" 3-Jaw Chucks, 4" Max. Turning Length, (2) 10 Pos Turrets, 3500 RPM, Gantry Load System w/ 14 Position Load Tables, Chip Conveyor, Coolant, No Tooling or Workholding Jaws Included **(Located in Fort Worth, TX)**

(3) 2011-2005 OKUMA 2SP-35HG DUAL SPINDLE TURNING CENTERS, s/n 156401, 6003, 5029, w/ FANUC 18iTB Control, (2) 10" 3-Jaw Chucks, 3500 RPM, (2) 12 Position Tool Turrets, Gantry Loader, (16) Position Loading Stand, Chip Conveyor, Coolant System, No Tooling or Workholding Jaws Included **(Located in Fort Worth, TX)**



(1 OF 6) MURATEC MW-200 DUAL SPINDLE TURNING CENTER



(1 OF 3) OKUMA 2SP-35HG DUAL SPINDLE TURNING CENTER

BRIDGE MILL

JOHNFOR DMC-1600H CNC 4-AXIS BRIDGE MILL, s/n VFA4022, w/ FANUC 0i-MB Control, 43" x 66" Table, 53" Between Housings, X-63", Y-51", Z-31.5", 40" Under Spindle, Fixed Rail, 40-ATC, CAT 50, 18" 4th-Axis Rotary Table, Chip Conveyor, Coolant, Mist Collector, No Tooling Included **(Located in Fort Worth, TX)**

MACHINING CENTERS

2020 DOOSAN VC 3600 TWIN PALLET 4-AXIS VERTICAL MACHINING CENTER, s/n MV0109-000074, w/ FANUC 0i-M Control, X-20.5", Y-14.2", Z-18.3", (2) 25.6" x 14.8" Table Size, 12,000 RPM Spindle, CAT 40, 20-ATC, Renishaw RMP60 Spindle Probe, Renishaw RTS-AA Touch Trigger Tool Setter, Koma RN 100R-2 High-Speed Multi-Spindle Rotary Tables, LNS Turbo Rear-Discharge Chip Conveyor (Requires Repair; Known Issues Include: (1) 4th Axis Inoperable, Pallet Change Fault, Air Lines Require Replacement, Missing Spindle Encoder, Incoming Air Regulator Requires Replacement) **(Located in Houston, TX)**

2008 MORI SEIKI NH5000 DCG/50 HORIZONTAL MACHINING CENTER, s/n NH502HH0854, w/ MSX-701 III CNC Control, (2) 19.7"x19.7" Pallets, 8000 RPM Spindle, CAT 50, 97-ATC, 0.001 B-Axis, Chip Conveyor, Chip Blaster Through Spindle Coolant, No Tooling Included **(Located in Winston Salem, NC)**



JOHNFOR DMC-1600H CNC BRIDGE MILL



OKUMA & HOWA 2SP-35HG DUAL SPINDLE CNC TURNING CENTER



DOOSAN VC 3600 TWIN PALLET 4-AXIS VMC



MORI SEIKI NH5000 DCG / 50 HMC

PLANT SUPPORT

PLANT SUPPORT

RAYMOND 076-SL100TF 10,000 LB. SIDE LOADER FORKLIIFT, s/n 076-07-00948, 137" Max. Lift, 48" Fork Length, 36 Volt, Wide Kit, 1200 Hours (Located in Sumter, SC)

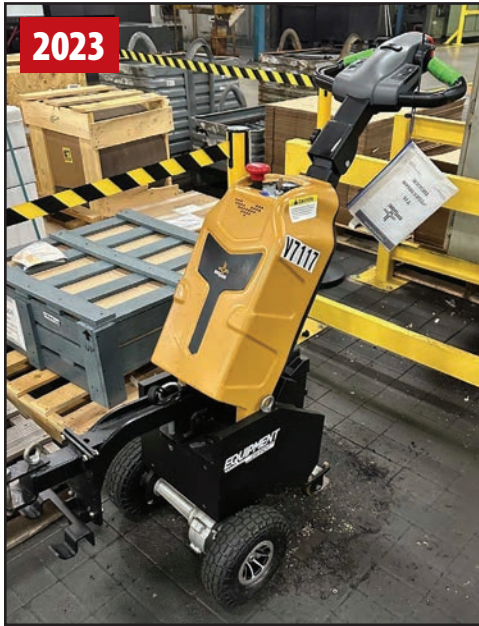
2005 NILFISK-ADVANCE CONDOR 4530C ELECTRIC FLOOR SCRUBBER, s/n 2053533, 3.5 MPH Max Speed, 70 Gallon Tank, 54" Squeegee, 36V (Located in Sumter, SC)

2023 BIG JOE T-40 24 VOLT INDUSTRIAL ELECTRIC TUGGER, s/n 4302014251, 4,000 lb. Capacity, Like New w/ Approx. 6 Hours (Located in Sumter, SC)

2019 AIMCO SAJ900-6-P9 INTEGRATED JIB CRANE SYSTEM W/ MANIPULATOR, s/n AIM6473, 474 lb Capacity, 215 lb End Tool Weight, 180 lb Torqlift Weight, 42" Span, 360° Rotation, 90° Power Tilt Manipulator (Located in East Peoria, IL)



RAYMOND 076-SL100TF SIDE LOADER



BIG JOE T-40 24 VOLT INDUSTRIAL ELECTRIC TUGGER



AIMCO SAJ900-6-P9 INTEGRATED JIB CRANE



NILFISK-ADVANCE CONDOR 4530C ELECTRIC FLOOR SCRUBBER

For auction inquiries, please contact Jennifer Reiner at
(847) 545-6374 or jennifer@perfectionindustrial.com

Bidding Available Through
BidSpotter

View our current auction schedule at www.perfectionindustrial.com

SALE CLOSING

Tuesday, June 24, at 10 AM CT

SALE LOCATION

7601 Wyatt Dr., Fort Worth, TX 76108
1335 N Wise Dr., Sumter, SC 29150

INSPECTION

Monday, June 23, from 9 AM to
3 PM CT, by appointment only

REMOVAL

All items must be removed no later than Friday, July 11. All removal is strictly on an appointment only basis. All rigging services must be provided by a Caterpillar qualified and approved rigger.

TERMS OF SALE

An 18% Buyer's Premium will be charged on all assets purchased by buyers providing full payment is made within 48 hours following the sale. Acceptable forms of payment are cashier's check, company check (with bank letter of guarantee) or wire transfer within 48 hours of the sale close. For any Buyers failing to pay within the 48 hour stated payment period, the Buyer's Premium will be increased to 20%. All invoices paid with a credit card are subject to a 20% Buyer's Premium, and credit card payments are only allowed up to a maximum of \$2,000 per auction. Everything will be sold to the highest bidder, in accordance with the Auctioneer's customary "Terms of Sale", copies of which will be posted on the Auctioneer's website and subject to additional terms announced the day of sale. All items are sold "As is, Where is" without any warranty, express or implied.

FURTHER INFORMATION

For auction inquiries, please contact Jennifer Reiner at (847) 545-6374 or jennifer@perfectionindustrial.com.