

FORMER ASSETS OF A MAJOR DIESEL ENGINE MANUFACTURER TEST FACILITY

13 Dynamometers 1,000 HP to 4,500 HP – Marley Cooling Towers – York Centrifugal Chillers – Industrial Pumps – Cummins 125KW Standby Generator- 25,000 & 27,000 Gallon Diesel Tanks – Quincy & Ingersoll Rand Air Compressors – Hyster & Toyota Forklifts – Machine Shop Equipment – Electronics – Testing Equipment and Much More

ONLINE TIMED SALE: TUE, APRIL 8, 10AM ET
INSPECTION: MON, APRIL 7, 9AM-4PM

4500 Leeds Ave
North Charleston, SC 29405



sales@pplauctions.com



224-927-5320

on
BidSpotter

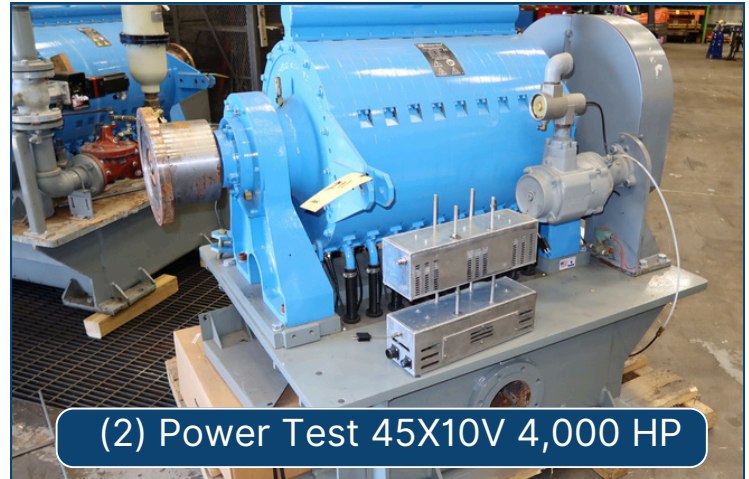


FORMER ASSETS OF A MAJOR DIESEL ENGINE MANUFACTURER TEST FACILITY

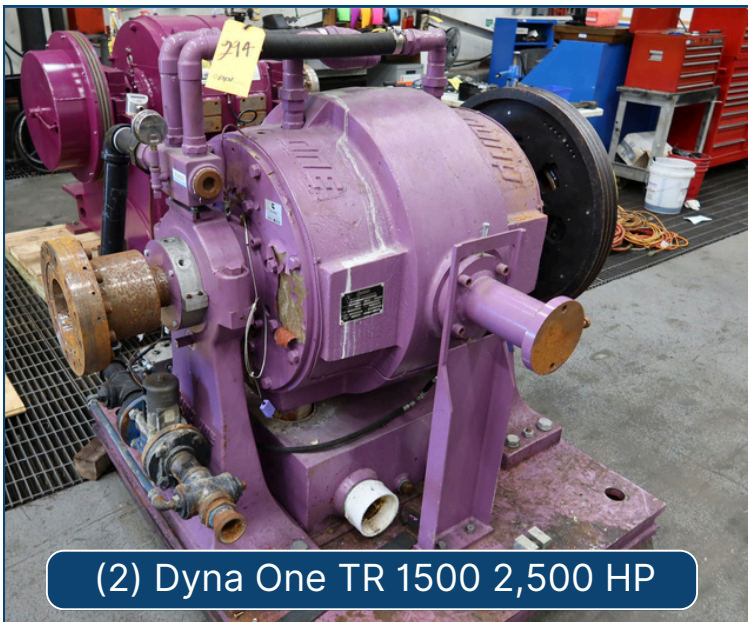
Page 2
Dynamometers
& Plant Support



Cummins 125 KW Generator



(2) Power Test 45X10V 4,000 HP



(2) Dyna One TR 1500 2,500 HP



(8) GE HP5TH352 1,000 HP



(2) Goulds 3196 50 HP Chill Water Pumps



(4) Goulds 1400 GPM Pumps



sales@ppplauctions.com



224-927-5320

on
BidSpotter



FORMER ASSETS OF A MAJOR DIESEL ENGINE MANUFACTURER TEST FACILITY

Page 3
Air Compressors &
Material Handling





FORMER ASSETS OF A MAJOR DIESEL ENGINE MANUFACTURER TEST FACILITY

Page 4
Maintenance
Shop



Piranha P90 90 Ton Ironworker



Miller Syncrowave 350 LX Welder



Large Part Stores



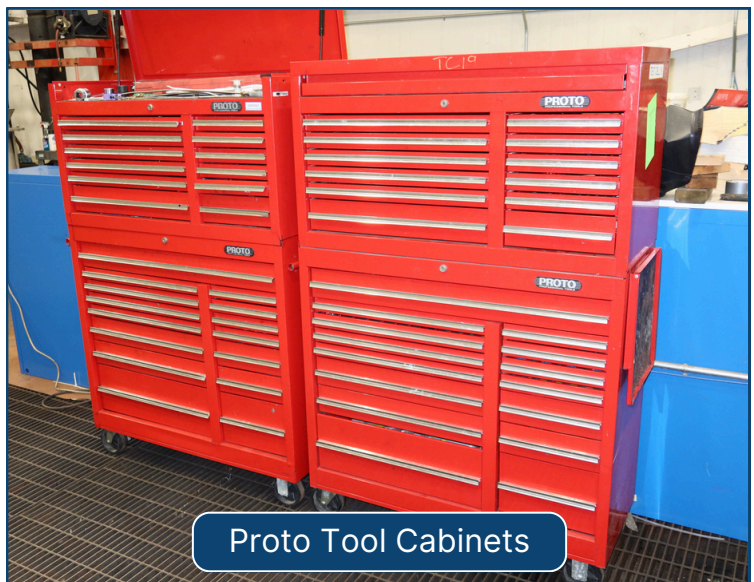
Keiydseiki Lathe



(3) 6ft Big Ass Fans



Rigid 535 Pipe Threader



Proto Tool Cabinets



sales@pplauctions.com



224-927-5320

on
BidSpotter