

**MASSIVE 2-DAY
ONLINE AUCTION**



PONDERAY
NEWSPRINT COMPANY

FORMER STATE OF THE ART SPECIALTY PAPER MILL

422767 State Rte. 20,
Usk, WA 99180
(Located 1-hour north of
Spokane)

**DATE: Bidding Closes
Tuesday &
Wednesday, July 22nd
& 23rd at 10:00 A.M.
PT Each Day**

INSPECTION: Monday
& Tuesday, July 21st &
22nd from 9:00 A.M.
– 4:00 P.M. PT Each Day

HIGHLIGHTS:

- Updated VALMET Paper Machine
- Complete Recycle-De-Ink Pulp Plant
- TMP Refining Mill
- (100+) GOULDS & SULZER 316 SS Pumps
- Material Handling Equipment & Rolling Stock
- Complete Paper Lab
- Massive MRO spare Parts & Motor Inventories
- And More

BID ONLINE AT BidSpotter

In Conjunction With:



VALMET PAPER MACHINE-WET END



ALFA LAVAL
SPIRAL HEAT
EXCHANGERS

**ONLINE
BIDDING ONLY!**



(SAMPLE)
MOTOR
INVENTORY

For complete catalog:

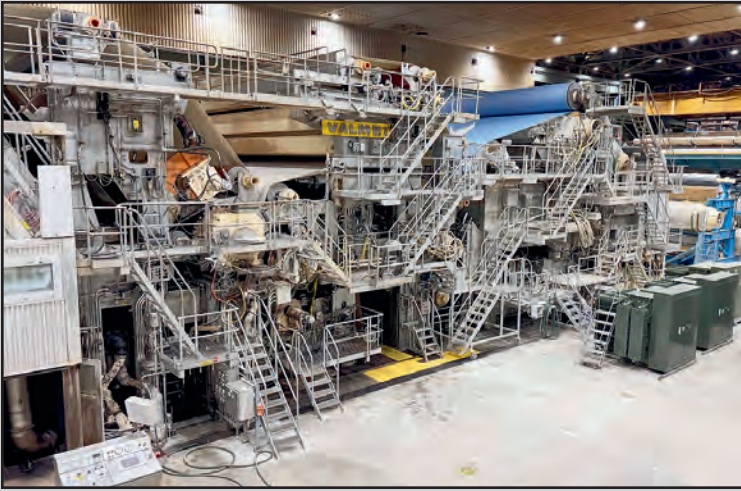
pplauctions.com

224-927-5320

sales@pplgroupllc.com



Washington PPL Auction Firm License: 25017028



VALMET PAPER MACHINE-PRESS END



VALMET KL1000 WINDER/SLITTER



VALMET PAPER MACHINE-DRYER SECTION



VALMET 72" SALVAGE WINDER



(2) METSO CONFLO CONICAL REFINERS WITH WITH 2,100 HP DRIVE

VALMET PAPER MACHINE INCLUDING

- VALMET 331" Trim Twin Wire Former, with (44) can Econo dryer
- VALMET KL-1000 Rewinder/Slitter, 50" max. dia. x 75" roll width
- VALMET Mdl. 242 Doctor 72" Salvage Winder, 50" max. dia. with PLC controls
- (13) NASH 9000 CFM Vacuum Pumps, Mdl. 904-P2, R1, R2, S1, and (1) CL-2001
- HYMAC HS-1D75 Primary Screen, with Scanpump 1,000 HP fan pump
- CELLECO 7-Stage Cleaner System, consisting of approx. (516) assorted cones

STOCK PREP EQUIPMENT

- (2) METSO Conflo Refiners, with Toshiba 2,000 HP, 2,300-volt motors
- MERI CT-300 Connustrenner Conical Bottom Filter System
- METSO Mdl. TRPW-1572 400 HP Twin Roll Wash Press
- METSO Mdl. PROFS-40LCSTOD Secondary Pressure Screen
- HEDEMORA Mdl. 5.09/14 Rotary Disc Filter, 18' dia. x 30'L, with Nash pump
- METSO Kajaani CAT Analyzing Station and MAP-Lab Freeness Test Panels



(1 OF 13) NASH 904 VACUUM PUMPS



MERI CT-300 CONNUSTRENNER FILTER SYSTEM



NASH VACUUM PUMPS

DATE: Bidding Closes Tuesday & Wednesday, July 22nd & 23rd at 10:00 A.M. PT Each Day
INSPECTION: Monday & Tuesday, July 21st & 22nd from 9:00 A.M. – 4:00 P.M. PT Each Day



BLACK CLAWSON UV-200 PRESSURE SCREENS



METSO HYDRAULIC TWIN ROLL PRESS WASHER



(1 OF 6) SUNDS 25,000 HP DRIVE MOTORS



PRESSURE SCREEN BASKETS



316 SS 12" DIA. AUGER CONVEYORS



DORR OLIVER
SIDE HILL
SCREENS

(2 OF 3) THUNE
SCREW
PRESSES

RECYCLED PULPER SYSTEM

- BLACK CLAWSON Pulper, 720 HP variable drive, 15' dia. x 20'H
- VOITH Sulzer RS-2C Reject Sorter, 75 HP, No. RE-0207
- BLACK CLAWSON Mdl. 14-1/2 High Density Liquid Cyclone
- KADANT BLACK CLAWSON Mdl. 51-2500 Hydra Purge Detrasher
- (2) BLACK CLAWSON Mdl. Ultra-VA-100 and 200 Coarse Screens
- Dedicated ALLEN BRADLEY Centerline Series 7 Panel Front and Back MCCs

TMP REFINING MILL

MASSIVE 3-LEVEL BUILDING FEATURING:

- (6) SUNDS Defibrator Primary, Secondary and Reject Refiners, 25,000 HP motors
- VINCENT Effluent Horizontal Screw Press, with 316 SS auger discharge conveyors
- (3) THUNE SP70L Horizontal Screw Presses, 24" dia. x 20'L, 250 HP drives
- METSO Opti Screen and HOPPER PSV-3600 Primary and Secondary Screens
- (5) ALPHA LAVAL Type IH-L-1W Spiral Heat Exchangers
- DORR OLIVER 1600-DSM 316 SS Side Hill Screens
- Approx. (300+ Feet) of 316 SS 12" Dia. Auger Conveyors



TMP REFINERS





GOULDS 316 SS FAN PUMP



(6) GOULD 316 SS CENTRIFUGAL PUMPS
WITH MULTI-DISC FILTER



STAINLESS STEEL MIXING TANK



(SAMPLE) ROTO-JET PUMP

PAPER PRODUCTION SUPPORT

- Over (100) GOULDS 316 SS Centrifugal Pumps, Mdls. 3175 and 3196
- Wide Assortment of 316 SS Vertical Storage Tanks, up to 12,000-gallon capacity
- SULZER Medium Consistency and Centrifugal Pumps, 150–250 HP
- ROTO-JET Mdl. RGB-3×2 Hi-Pressure Pump Set, Size D600
- AES Hi-Pressure Filter Banks; GORMAN RUPP Self-Priming Solids Pumps
- BTG SPECTRIS SPC-5500 Single Point Charge Analyzer/Consistency Transmitter

LAB EQUIPMENT

- NIKON Eclipse Ci LED Microscope, with Fujitsu tablet display
- TECHNIDYNE Mdl. CTH-ISO Color Touch 2 Spectrophotometer, with printer
- METSO Paper Lab Automated Paper Tester
- LABTECH Pressure Testing System, with mixing chamber, and accessories
- CARVER Auto Hydraulic Heated Platen Press
- NORAM Stainless Steel Benchtop Mixer
- CANADIAN Standard Freeness Tester
- ELGA Pure Lab Flex Ultra-Pure Water Treatment System



METSO PAPER LAB



CARVER HEATED PLATEN TEST PRESS



LABTECH
BENCHTOP
HIGH SPEED
MIXER

NIKON
BINOCULAR
MICROSCOPE
WITH VIDEO



ONLINE
BIDDING ONLY!

DATE:
Bidding Closes
Tuesday &
Wednesday,
July 22nd & 23rd
at 10:00 A.M. PT
Each Day
INSPECTION:

Monday &
 Tuesday, July 21st
 & 22nd from 9:00
 A.M. – 4:00 P.M. PT
 Each Day

For complete
catalog:
pplauctions.com
224-927-5320

ONLINE
BIDDING ONLY!



FORD F-150 PICKUP TRUCK



YALE FORKLIFT



KENWORTH DUMP TRUCK



YALE FORKLIFT WITH CLAMP



FORD L-9000 DUMP TRUCK



STEEL FLATBED TRUCK



RAYFO HYDRAULIC DEWATERING PRESS

MATERIAL HANDLING EQUIPMENT & ROLLING STOCK

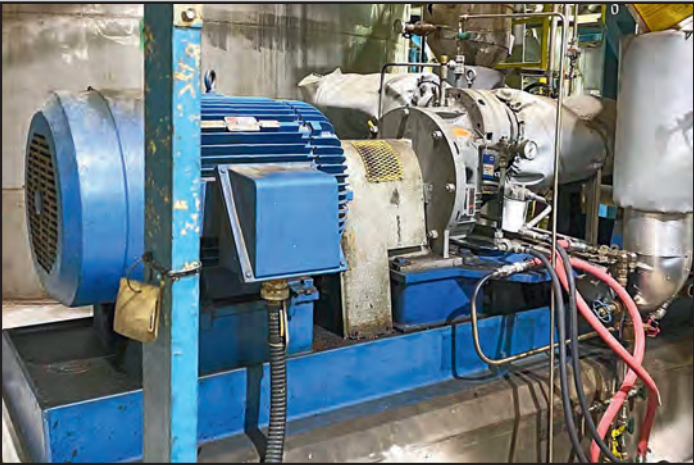
- (2) 2014 – 2016 YALE GLC060V Solid Tire LP Forklifts, 6,000-lb. capacity, auxiliary hydraulics, 3-stage mast
- (4) 2005 – 2006 YALE GLC060V LP Forklifts, 6,000-lb. capacity, auxiliary hydraulics, 3-stage mast
- (3) Assorted 2011 – 2017 HYSTER LP Forklifts, 6,000-lb. capacity, auxiliary hydraulics, 3-stage mast
- (5) Assorted CASCADE Roll Clamps
- WAGNER CHD-17 Diesel Chip Dozer, 50 cubic foot bucket, 6-cylinder Cummins diesel, complete spare engine
- VESTIL SL-137-AA Power Lift Stacker, 1,000-lb. capacity
- (2) GENIE PL-1-24P Aerial Manlifts, 24' maximum height, 110 volt electric
- BIG JOE PDI-24-T12 Walk-Behind Electric Straddle Truck, 2,000-lb. capacity
- 1997 FORD F-150 4X4 8' Flatbed, auto transmission, 49,000 miles
- 2005 KENWORTH Dump Truck, CAT C7 diesel, manual transmission, Valen 15' steel dump body, 63,850 miles
- 1992 FORD L-9000 14' Dump Truck, auto transmission, Cummins 300 HP, with plow mount
- 1984 INTERNATIONAL Harvester S1900 16' Steel Flatbed, with liftgate, DT466 Diesel engine, manual transmission
- 1989 CHEVY K2500 Silverado 8' Flatbed, 121,000 miles
- 1991 FORD F-350 Ambulance, fully rigged, 76,000 miles



WAGNER CHIP DOZER WITH SPARE MOTOR

PLANT SUPPORT & SPARE PARTS

- NEBRASKA 300 PSI Packaged Steam Boiler, propane fired, 180,000 lbs./hr. with John Zink low nox burner
- SUNDYNE Series P-3000 Stainless Steel Feedwater Pumps, 400 GPM
- Complete Spare Motor and Drive Inventory, 100–10,000 HP
- Large Selection of Rebuilt Pumps, Pump Power Ends, Impellers, and Related Parts
- Extensive selection of FISHER Control Valves, Stainless Steel Ball, Gate, and Butterfly Valves, ROSEMONT and EMERSON Micromotion and Flow Controls, and Related



(1 OF 2) SUNDYNE SUNFLO P3000 SS BOILER FEEDWATER PUMPS

- Pallet Lots of Bearings & AB Electrical Components, Servo Drive and Small Motors, Hydraulic and Pneumatic Parts and Fittings, and Much More



NEBRASKA STEAM BOILER

DATE: Bidding Closes Tuesday & Wednesday, July 22nd & 23rd at 10:00 A.M. PT Each Day



BLACK CLAWSON PULPER DRIVE



PARTIAL MOTOR INVENTORY



PUMP POWER ENDS



FISHER CONTROL VALVES



PRESSURE RELIEF VALVES



HAGGLUNDS HYDRAULIC DRIVE



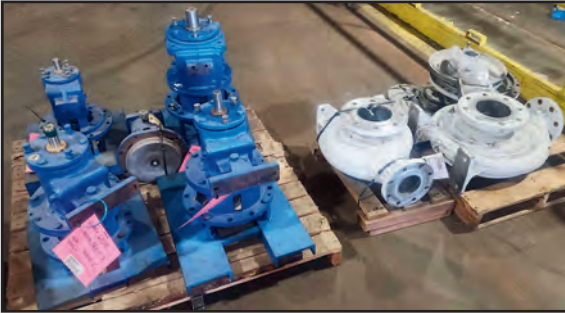
(SAMPLE) SMALL MOTOR INVENTORY



TRANSFORMER AND ELECTRICAL PARTS



MICRO MOTION CONTROLS



PUMP PARTS



(SAMPLE) LARGE BEARINGS



AB AND ROCKWELL CONTROL COMPONENTS

TERMS OF SALE: To be sold in accordance with PPL Auctions Terms of Sale, as published on our website and in the auction Buyer's Guide. A buyer's premium will apply.



BID ONLINE AT
BidSpotter



(SAMPLE) VIDMAR CABINETS