



DREWEATTS

EST. 1759

GUY TOBIN

'For the Love of Objects!'

TUESDAY 7 JANUARY 2025 | NEWBURY



GUY TOBIN
'For the Love of Objects!'



GUY TOBIN

'For the Love of Objects!'

TUESDAY 7 JANUARY 2025 | NEWBURY

LOTS 1-227 | 10.30AM

VIEWING IN NEWBURY

Sunday 5 January: 10am–3pm

Monday 6 January: 10am–4pm

Tuesday 7 January: 9am–4pm

ENQUIRIES & CONDITION REPORTS

housesales@dreweatts.com

NEWBURY

Donnington Priory, RG14 2JE

+44 (0) 1635 553 553

LONDON

16 Pall Mall, SW1Y 5LU

+44 (0) 20 7839 8880

info@dreweatts.com

dreweatts.com

DREWEATTS

EST. 1759

A GUIDE FOR BUYERS

REGISTRATION AND BIDDING

We advise bidders to register at least 48 hours in advance of the auction as we will need to complete Know Your Client checks on all registrants. We allow commission (or absentee bids), telephone bids, live online bidding, and in person bidding. More information is available in our Terms of Sale at the back of this catalogue, and on our website.

BUYER'S PREMIUM

26% of hammer price up to £20,000 (31.2% including VAT), plus

25% of hammer price from £20,001 up to £500,000 (30% including VAT), plus

20% of hammer price from £500,001 up to £1,000,000 (24% including VAT), plus

12.5% of hammer price in excess of £1,000,000 (15% including VAT)

ADDITIONAL CHARGES AND SYMBOLS

λ - Indicates that this lot may be subject to Artist's Resale Right (Droit de Suite) royalty charges.

Y - Indicates that this lot may be subject to CITES regulations when exported.

† - Indicates that VAT is payable by the purchaser at the standard rate of 20% on the hammer price as well as being charged on the buyer's premium.

θ - Indicates that the lot is a zero rated item and therefore subject to buyer's premium of 26% exclusive of VAT (0% VAT).

± - Indicates that the lot is being sold whilst subject to temporary importation and that import VAT at the reduced rate (currently 5%) calculated on the hammer price is due.

Ω - Indicates that the lot has been imported from outside the UK and that import VAT at the standard rate (currently 20%) calculated on the hammer price (inclusive of any applicable duty) is due.

β - Indicates that the lot is offered in Bond. This applies to wine. Bidding will be at duty paid prices other than for those lots marked 'IN BOND/β'.

Note, the import VAT charged for lots with symbols ± or Ω can be refunded if Dreweatts is instructed to re-export the property or if the VAT liability is transferred to another Temporary Admission authorisation.

PAYMENT

If you are successful, you will receive an invoice to your registered email address, which will include detailed payment and collection information. If you wish to see this in advance, please visit our website. Items must be paid for in full and Know Your Client checks must be complete before we can release any purchases; first time buyers may also be subject to restrictions on the methods of payment we can accept. Please confirm this with the saleroom prior to collection.

COLLECTIONS, SHIPPING AND STORAGE

Unless otherwise stated below, purchases are available for collection from Dreweatts Donnington Priory salerooms from Monday to Friday (9am-5pm) by appointment only. If you wish to have the item shipped to you, please see the list of suggested shippers on our website.

Garden items, smaller objects and small pictures: items will remain at Donnington Priory, but please check when booking your collection. **Note:** Buyers of large garden items and statuary should ensure they/their carriers are able to remove the items themselves. Please call Dreweatts in advance of any collection for further advice.

Large items (furniture, carpets, rugs, mirrors and large objects): items will be removed to commercial storage at Sackville-West Moving & Storing (Andover SP10 3SA) on Friday 10 January and will be available for collection from Monday 13 January onwards. Items removed to Sackville-West will be stored free of charge until Sunday 19 January. From Monday 20 January, items will be subject to a transfer fee of £20 (plus VAT) and a storage charge of £3 (plus VAT) per lot per part or full day thereafter. These charges will be the sole liability of the purchaser and will be billed directly to them by Sackville-West Moving & Storing. Sackville-West Moving & Storing will provide an additional week's free storage and waive the transfer fee if they are instructed by the purchaser to deliver to them. On payment of all sales and storage costs, items will be available for collection by appointment from Sackville-West Moving & Storing (tel: + 44 (0) 2080 909988; email: office@sackvillewest.co.uk).

CONDITIONS OF SALE

Any registration to bid is subject to acceptance of our Auction Terms and Conditions and Privacy Policy. Both are available on our website.

CONDITION OF ITEMS

Buyers must satisfy themselves to the condition of any item prior to bidding. Detailed condition reports and additional images are available upon request.

EXPORT OF ITEMS

Prospective buyers are advised to familiarise themselves with the lot symbols and export and import restrictions applicable to a lot prior to bidding. It is the buyer's responsibility to obtain all permits and licences necessary to export lots lawfully from the UK and import into their country. We will not be able to cancel your purchase if your lot may not be exported, imported or it is seized for any reason by a government authority. We are happy to assist with the submission of necessary applications on behalf of our buyers, but we will charge for this service only to cover the costs of our time.

GLOSSARY OF TERMS

Where relevant, for example Picture auctions or Clocks auctions, a glossary of cataloguing terms will be available in the printed catalogues as well as on our website.

SPECIALISTS FOR THIS AUCTION



Joe Robinson
Head of House Sales and Private Collections (Head of Sale)



Peter Horwood
Senior Specialist, House Sales and Private Collections



Arabella Methuen
Administrator



Ashley Matthews MRICS
Furniture, Clocks & Decorative Art



Silas Currie Leigh-Wood
Sculpture & Works of Art



Geoffrey Stafford Charles MRICS
Ceramics & Glass



Gemma Sanders
Modern Design & Decorative Art



Daniele Amesso
Old Master Pictures



Yingwen Tao
Chinese and Asian Art

INTRODUCTION

BY
EMILY TOBIN

Guy Tobin is my oldest brother. Seven and a half years exist between us, which, through childhood and adolescence, felt like an impassable gap. A gap that was made larger still by the fact he and our other brother Nick lived with our grandparents for two years when our parents and I moved to South America. My suspicion is that this time with our grandparents played a large part in shaping who Guy is today. I don't remember their house nearly as well as he does but it was filled with lovely things: the hallway lined with William Morris's 'Willow Bough'; an oil painting of a parrot perched above a cracked open watermelon; a firescreen shaped like a young girl carrying a basket: tiny cabinets, drawers padded with pepto bismol coloured cotton wool storing all sorts of treasures: feathers, stamps, marbles, a broken bird's egg. Our grandparents' house felt like a place where, if you looked hard enough, you might just discover something new.

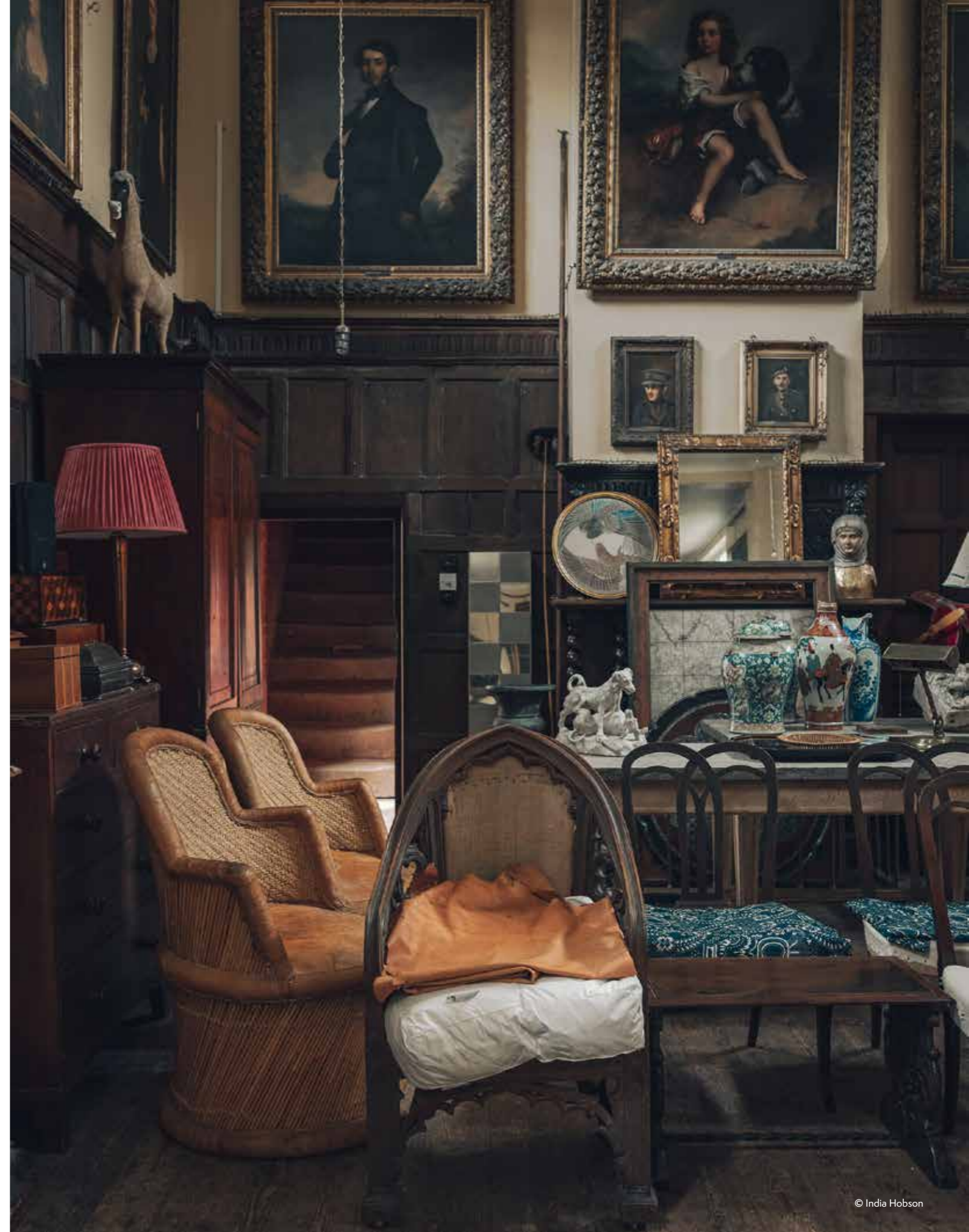
And really, that's what Guy has been doing ever since: looking for and finding the most extraordinary things. It's a difficult and peculiar skill to describe and yes, I write this essay as his deeply impartial sister, but I also write it as someone who has worked in the world of design and decoration for a long time, most recently as the editor of *The World of Interiors*, where every day fabulously beautiful things cross my desk and yet I believe that Guy has an eye and passion for what he does that places him amongst some of the best dealers working today.

Having started his career lugging furniture as a porter at Phillip's Guy has an understanding, not only of how objects are made but how they feel. He speaks the language of wood grains and leg profiles with a fluency that allows him to recognise the mark of a particular craftsman or even a conservator; to ascertain when and why a piece was created.

He is drawn to something not simply because of his acquisitive impulse or for its value or its beauty but because it shows the hand of who made it and in some small way tells not only their story but that of the time in which it was produced. Under Guy's watch an object or a piece of furniture is simply the starting point from which spools the threads of countless different stories.

He, like many of his peers, is led by instinct and insatiable curiosity. He is drawn to the hunt: to the unveiling of clues, the inevitable false turns and the small victories that come along the way. The objects in this sale will have come under many hours of scrutiny by their current owner in a bid to better understand them. Once strangers, they are now profoundly familiar to Guy and hopefully will be as treasured by the next person who buys them.

In the years that have passed since our childhood ended the gap between Guy and I has narrowed, helped in large part by our acquisitive personalities and shared compulsion towards extracting meaning from things. So it is no surprise that this sale is called 'For the Love of Objects!' because that is what my brother has spent a lifetime doing - falling in love with objects again and again, and then through enthusiasm and deep knowledge, encouraging others to do the same.





1
 A SET OF FOUR RUSTIC
 PENDANT LANTERNS
 20TH CENTURY
 Each with black painted metal
 frame, projecting conical roof,
 glass sleeve with bubble apertures
 25cm high



£300-500



2
 A PAIR OF ORMOLU URNS AND COVERS
 IN ROCOCO STYLE
 LATE 19TH CENTURY
 Each of asymmetric form and modelled
 opposing
 18.5cm high overall

£400-600

3 Y
 A LOUIS PHILIPPE ROSEWOOD AND MARBLE
 TOPPED GUERIDON
 CIRCA 1840
 The dished Carrara marble above the apron and fluted
 stem, quadripartite base and paw feet
 71cm high, 102cm wide

£500-800





4 (part lot)

4
A GROUP OF TRIBAL CLUBS AND WALKING STICKS TO INCLUDE:
 Fijian Vunikau club with a silver mounted cap, 105cm long
 Fijian Kiakavo club, stamped AV, 91.5cm long overall
 A snake head handle walking stick, bone teeth, 108.5cm long
 A walking cane with hand holding a head handle, 90.5cm long
 A ceremonial carved wood spear, possibly Austral Islands, 111.5cm long

Provenance:
 The ceremonial carved wood spear from a private Cornish collection

£800-1,200

5
A COOPERED BARREL
 EARLY 20TH CENTURY
 Of typical form bound with bentwood, stamped 'NEW YORK'
 73cm high, 47cm diameter at the aperture

£100-150



5



6

6
A PAIR OF GOTHIC REVIVAL OAK HALL CHAIRS
 SECOND QUARTER 19TH CENTURY, IN THE MANNER OF THOMAS HOPPER
 The arcaded back with Gothic tracery above the solid seat and turned tapering and fluted legs
 84cm high

£200-400



7Y
JAMES HENRY SELLERS (BRITISH 1861-1954)
A PAIR OF ART DECO WARDROBES
 CIRCA 1930
 The double wardrobe doors with diamond parquetery in satinwood and burr, detailed with ebonised moulding, red geometric "zig-zag" linear inlay and ivory handles
 182.5cm high, 125cm wide, 67cm deep



7

Literature:
 John Charles Rogers, *Modern English Furniture*, Country Life, London, 1930, page 93 (for a similar model).

Please note, Dreweatts have applied for a de-minimus license for this lot: 8N5Z29E9

£2,000-3,000

8
JEAN-GABRIEL DOMERGUE
 A "MONTE CARLO" POSTER DEPICTING
 BRIGITTE BARDOT
 c.1945-1950
 Offset print in colour on smooth paper,
 signed in the print, image dimensions 85.3cm
 high, 54.4cm wide, sheet dimensions, 88cm
 high, 62cm wide, printed by National Monaco



8

9
 A PAIR OF INDIAN BAMBOO, WOVEN GRASS
 AND LEATHER TUB ARMCHAIRS
 20TH CENTURY
 97cm high
 £600-800

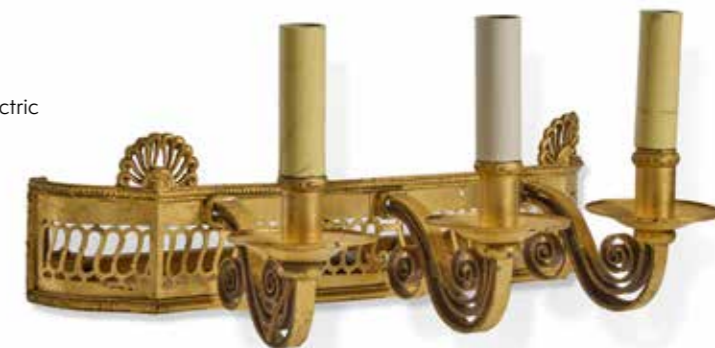


9



10
 A SET OF FIVE GILT BRASS WALL LIGHTS
 EARLY 20TH CENTURY
 Possibly adapted from planters, each with three bold scrolling electric
 lights on pierced scrolling backplate with Anthemion mounts
 42.5cm wide, 25cm protuberance

£400-800



10 (set of five)



11

11
 A GEORGE III MAHOGANY SIDE TABLE
 CIRCA 1780
 With false drawer front to the front and hidden drawer to the side,
 and with a shaped undertier
 72cm high, 68cm wide, 37.5cm deep

£400-600

12
 A SET OF SEVEN ARTS & CRAFTS OAK SIDE CHAIRS
 CIRCA 1910, IN THE MANNER OF ROBERT THOMPSON
 Each with a check covered seat
 86cm high

£400-600



12



13



13

13
AFTER GUIDO RENI
THE CHARIOT OF AURORA
Engraving
Drawn by Antonius Cavallucci, and engraved by Raphael Morghen
53 x 95cm (20¾ x 37¼ in.)

£200-300

14 Y
A FRENCH ROSEWOOD, TULIPWOOD
AND POLYCHROME LACQUER SIDE
CABINET
LAST QUARTER 19TH CENTURY
The shaped marble top above the painted
frieze incorporating a drawer and a cupboard
door flanked by fluted projecting corners
97cm high, 76cm wide, 53cm deep

15
A MATCHED PAIR OF WALNUT AND
VERDURE TAPESTRY UPHOLSTERED
ARMCHAIRS
FRENCH, EARLY 18TH CENTURY
One with shell carved cabriole legs, the
other with horsebone legs, the raised backs
each centred by a bird
114cm and 111cm high respectively

£1,200-1,800

£500-700



14



15



16

16
A FLEMISH MYTHOLOGICAL LANDSCAPE TAPESTRY, THE STORY OF NESSUS AND DEIANEIRA
PROBABLY ANTWERP, CIRCA 1680
Surrounded by floral border with cartouches
approximately 370cm high, 320cm wide

£2,000-4,000



17
A GILT BRONZE SIX LIGHT CHANDELIER
IN LOUIS XIV STYLE
 FRENCH, FIRST HALF 20TH CENTURY
 Foliate cast throughout, with three arms each
 bearing a pair of sconces, stamped JD
 70cm high, 46cm wide

£200-300

19
A NEAR PAIR OF OAK AND LEATHER UPHOLSTERED
ARMCHAIRS
 CIRCA 1880
 Of Savonarola type, each with studwork
 decoration, the back and arms above the
 X-frame supports
 87cm high

£500-800



18

18
A PAIR OF WEATHERED WROUGHT IRON
KOI CARP FISH CANDLESTICKS
 MID 20TH CENTURY
 Each supporting two candle branches
 40cm high, 34cm deep

£200-400



19



21



20

20
A CARVED LIMESTONE BUST OF A LADY
 PROBABLY FRENCH, 19TH CENTURY
 The female figure in the French late 18th century manner,
 portrayed looking to dexter, her hair falling upon her shoulder,
 her drapes open exposing her left breast, unsigned, on a
 marble socle base
 71cm high overall

£500-800

21
A SCAGLIOLA PEDESTAL COLUMN
 19TH CENTURY
 Simulated variegated grey/white marble, the cylindrical
 column above a circular base
 108cm high, 30cm diameter at the top

£400-600



22



22
ATTRIBUTED TO THOMAS BARKER OF BATH (BRITISH 1769-1847)
TWO MOUNTAINOUS OIL SKETCHES
Oil on paper laid to board
Each 13 x 19cm (5 x 7¼ in.) (2)

Provenance:
Myles Wynn Cato, Cheltenham

£300-500



23

23
GEORGE ARTHUR FRIPP (BRITISH 1813-1896)
ITALIANATE LANDSCAPE WITH GOATHERDS
Oil on board
29.5 x 39.5cm (11½ x 15½ in.)

Provenance:
Miles Wynn Cato, Cheltenham

£300-500



24

24
JOHN WILLIAM UPHAM (BRITISH 1772-1828)
DORSET HOUSE
Watercolour
Signed and dated '1890' (lower left)
23.5 x 33.5cm (9¼ x 13 in.)

£200-300

25
AN UNUSUAL CARVED AND PAINTED MODEL OF A LOGGIA
EARLY 19TH CENTURY
Projecting moulded flat roofline above four columns flanked by stonework, with covered gallery beyond, steps to the front and sides
55cm wide, 28cm high, 26cm deep

£800-1,200



25



26

26
AN AESTHETIC MOVEMENT BRASS MAGAZINE RACK
LATE 19TH CENTURY, BY S. H. & S
Of tubular construction, stamped for the maker and registration number 80693
79cm high

£150-250

27
A GROUP OF FOUR VARIOUS HIGH BACK SIDE CHAIRS
MID 19TH CENTURY, IN THE MANNER OF DANIEL MAROT
Of similar form each high back above an upholstered seat, three with turned supports, the fourth with cabriole legs
131cm high and smaller

£600-1,000



27



28
ATTRIBUTED TO
FRANCOIS SEE
(B. 1952); A STEEL &
BRUSHED STEEL SIX-
FOLD SCREEN
CIRCA 1970
Each panel 153cm high,
31cm wide

£1,000-1,500



28

29
KARL SCHRODER
(GERMAN, 1870-1943);
A PAIR OF 'MODEL
1459' ARMCHAIRS
CIRCA 1935; LIKELY
MANUFACTURED BY
FRITZ HANSEN
Blue painted (potentially
later) beech frames,
padded seat and back
re-upholstered in sheep
wool fabric
78cm high, 60cm wide,
60cm deep

Literature:
Fritz Hansen catalogue,
1938

£2,000-3,000



29



30

30
W.A.S. BENSON (BRITISH, 1854-1924)
A COPPER AND BRASS TABLE LAMP
WITH 'REFLECTOR' SHADE
CIRCA 1890 AND LATER CONVERTED
TO ELECTRICITY

With 'paddle' shade above the burner
reservoir, marked 'Super Aladdin Patent', on a
brass stem and square foot
Stamped 'W.A.S. BENSON'
72cm high

£800-1,200



31

31
A PAIR OF SIMULATED BRECCIA MARBLE PANELS
MODERN
Painted on board
120cm high, 59.5cm wide

£200-400



32

32
A PAIR OF REGENCY OAK BOBBIN-
BACK CHAIRS
CIRCA 1815, IN THE MANNER OF
JEFFRY WYATT
Each square back with spiral-turned
vertical splats and faceted tapering legs
Each 94cm high

The chairs are similar to those in a set
of twelve that were supplied in 1814 for
the 8th Duke of Bedford for Endsleigh,
Devon, sold at Christies, Property from
two Ducal collections, 21 September
2004, lot 875

A pair of stools with similar faceted
tapering legs attributed to Wyatt sold at
Christies, Millden - A Scottish Lodge, 20
January 2005

£500-700



34

34
A CUT-GLASS CLUB-SHAPED DECANTER AND MUSHROOM STOPPER
20TH CENTURY
The globular body cut with a field of large diamonds, 37.5cm high

Together with a port decanter topped with a silver neck and stopper,
20th century, 35cm high

£200-300



33

33
A LARGE WHITE PAINTED METAL EIGHTEEN LIGHT CHANDELIER
20TH CENTURY
With three tiers of candlearms, within a scrolling leaf decorated frame
89cm high, 77cm wide

£300-500



35

35
A CONTINENTAL WALNUT SIDE TABLE
PROBABLY DUTCH, LATE 17TH CENTURY
The rectangular top above a frieze drawer and
on turned supports united by stretchers
73cm high, 99cm wide, 68cm deep

£400-600



36

AFTER THE ANTIQUE

A MARBLE BASE FORMED AS EROS WITH THE DOLPHIN
 ORESTE VACCA PROBABLY NAPLES, LATE 19TH CENTURY
 Incised signature to base, set on associated oak base with table
 light support
 marble 39cm high, base 19.5 by 18cm

Although the identity of the artist is as yet untraced, it would
 seem that this is a copy of the Roman 2nd Century AD Farnese
 Eros with the Dolphin in the National Archaeological Museum of
 Naples (inv. 6375).

£800-1,200



36

37

A SET OF SIX WILLIAM IV SIMULATED ROSEWOOD DINING CHAIRS
 CIRCA 1835, IN THE MANNER OF GILLOWS

Each with bar back above caned seat
 86cm high

£400-600



37



37A

37A
OSKAR BERGMAN (SWEDISH 1879-1963)
SMOKE SIGNALS
Pencil on paper
Signed and dated '1924' (lower right)
33 x 42cm (12 x 16½ in.)

£400-600

38
A LATE VICTORIAN GREEN TOLE WALL OR TABLE LANTERN
BY BULPITTS AND SON, DATED 1892

Conical top above glazed front and sides, the side door accessing interior with oil lamp and original mirror reflector, wall support bracket to reverse, short feet, maker's label
72cm high, 33cm wide, 26cm deep

£200-400



38

39
A PALLADIAN CARVED LION HEAD KEystone
ENGLISH, MID 18TH CENTURY
Carved in limestone, expressive deep features
30.5cm high, 25cm wide, 19cm deep

£700-1,000



39

40
AN EDWARDIAN PENDANT CEILING LANTERN
EARLY 20TH CENTURY

With verdigris patinated metal frame, long tube above flowerhead, scrolling frame around glass spiral shade
148cm high overall

£250-350



40



41

41
AFTER GERALD LESLIE BROCKHURST
SEVEN SIGNED ETCHINGS OF VARIOUS SUBJECTS INCLUDING: LASSITUDE, VIBA, HEAD OF GIRL, MELISANDE, AND PORTRAIT OF A LADY
Etching

Each signed (lower right)
21 x 17cm (8¼ x 6½ in.); and smaller (7)
Circa 1920

Provenance:
T. & R. Annan & Sons (for Lassitude)
F. J. Ward, London (for Head of a Girl)
Barclay Simpson Fine arts Gallery,
Lafayette (for Portrait of a Lady)

£800-1,200

42
AN ANGLO-INDIAN HARDWOOD OPEN
BOOKCASE

CIRCA 1860
With carved pilasters flanking the adjustable shelf
90cm high, 117cm wide, 32cm deep

£300-500



42

43

A PAIR OF CANTON PORCELAIN BALUSTER VASES AND COVERS
CHINESE, MID 19TH CENTURY

Decorated with a wide blue ground band panelled with birds and landscapes within
two yellow ground bands, with kylin finial and four lion masks
44cm high

£800-1,200



43

43

44

A MAHOGANY, BRASS
FRAMED AND EMERALD
SILK VELVET-LINED
DISPLAY CABINET

AFTER WILLIAM VILE,
BY MALLET, CIRCA 1928

The slightly breakfront base
with three panelled doors
and applied flowerhead
corner pieces
206cm high, 117cm wide,
39cm deep

£800-1,200



44



45

45
A FRENCH TABLE GLOBE
J. FOREST, PARIS, EARLY 20TH CENTURY
The paper gores mounted to the sphere, one with cartouche with maker's details, mounted on a turned oak stand and square base
59cm high

£100-150



47

46
A WALNUT AND VERDURE TAPESTRY
UPHOLSTERED ARMCHAIR
18TH CENTURY
With bobbin turned supports throughout, the raised back centred by a stork
110cm high

£600-800

47
A VICTORIAN CARVED OAK OCCASIONAL TABLE
CIRCA 1860
The circular top with gadrooned edge above a square section inverted baluster stem and scroll legs
80cm high, 75cm diameter

£1,000-1,500



46

48
ATTRIBUTED TO FRANCESCO ANTONIO FRANZONI (1734-1818)
A CARVED MARBLE GROUP OF FIGHTING DOGS
EARLY 19TH CENTURY
18.5cm high, 32.5cm long, 20cm deep

Francesco Antonio Franzoni trained in Carrara but moved to Rome in the mid 1760s where he specialised in the restoration of antiquities and creating new works often incorporating earlier elements for Europeans on the Grand Tour.

As one of the principal restorers of antique sculpture in Rome in the second half of the 18th century he worked for Pope Pius VI for whom he created a series of marble animal sculptures for a room in the Palazzetto del Belvedere.

£3,000-5,000



48



49

49
AN AESTHETIC MOVEMENT MAGAZINE RACK
CIRCA 1890

The faux-bamboo frame mounted with Japonisme lacquered panels
46cm high, 42cm wide, 25cm deep

£50-80



50

50
A GILTWOOD WALL MIRROR IN BAROQUE TASTE
19TH CENTURY

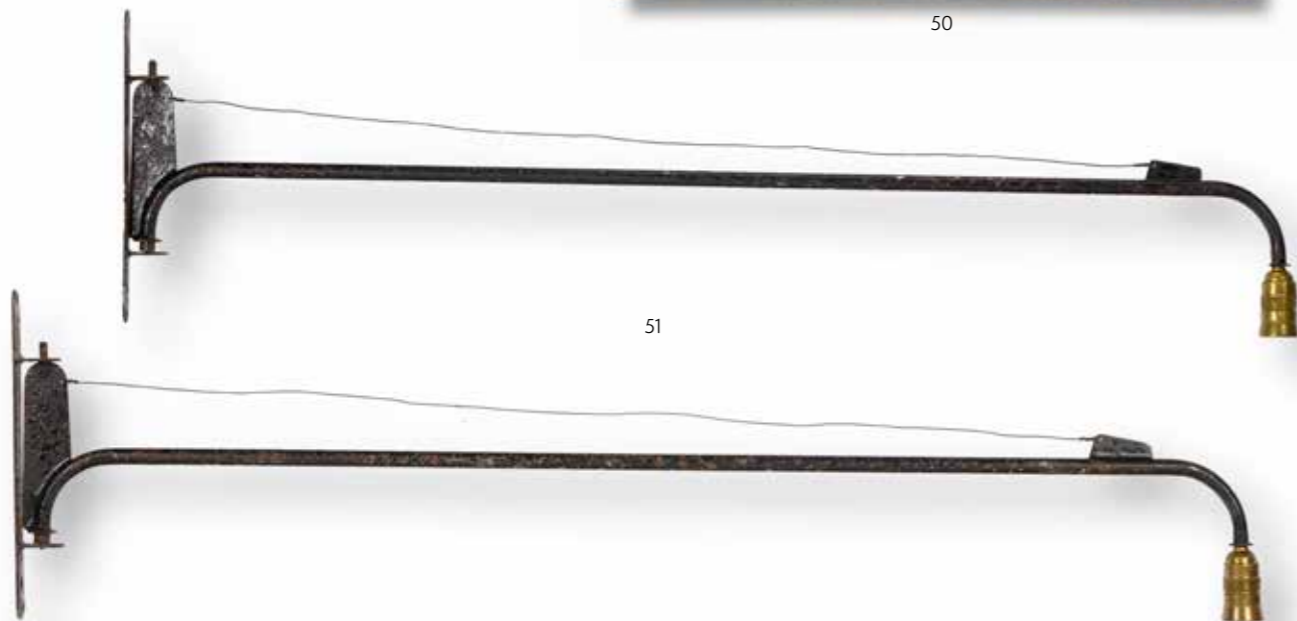
The frame with repeating stylised scrolls
80cm high, 68cm wide

£200-300

51
A PAIR OF 'POTENCE' CANTILEVER WALL LIGHTS
AFTER JEAN PROUVÉ (FRENCH, 1901-1984),
20TH CENTURY

Black patinated iron
120cm long

£800-1,200



51

52 λ
JACQUES (1926-2008) & DANI (1933-2010) RUELLAND
A TABLE LAMP
CIRCA 1960

Pink layered glazed ceramic of bulbous squat form;
with fabric shade
Incised 'Ruelland' signature to underside
17.5cm (excl. light fitment and shade)

Provenance:
Bejamin Proust, Masterpiece 2014

Literature:
Jean-Jacques & Benedicte Wattel, *Les Ruelland, Céramistes*,
Éditions Louvre Victoire, 2014, p.109 (for similar form)

£2,000-3,000



52

53
A PAIR OF ALPACA VELVET UPHOLSTERED
LARGE ARMCHAIRS, IN THE MANNER OF
JEAN ROYERE
CIRCA 1940-1950

81cm high, 103cm wide, 84cm deep

£1,000-1,500



53



54
 A GILT AND POLYCHROME CARVED LIMWOOD BUST OF THE MADONNA
 TUSCAN, EARLY 16TH CENTURY
 39.5cm high base 20cm wide

£1,500-2,500

55
 A LARGE EARTHENWARE FLOOR TILE
 PROBABLY QIN DYNASTY
 Moulded with stylised flowerheads and
 scrolls
 30cm square

Provenance:
 The private collection of Walter Gotell,
 well known for his role as General Gogol
 in 'The Spy who loved me'

£300-500



55



54

56
 A PAIR OF CANTON YELLOW GROUND ENAMEL CANTED RECTANGULAR
 SMALL JARDINIERS
 POSSIBLY QIANLONG
 The ogee shaped sides decorated with panels of landscapes and flowers, with
 four character qianlong mark
 17.6cm long, 12.4cm wide

£700-1,000



56



57

57
A 'NEO-CLASSICAL' SATINWOOD AND POLYCHROME DECORATED ARMCHAIR
CIRCA 1870, POSSIBLY BY WRIGHT & MANSFIELD
The chair back decorated and inscribed with text GEORGE NASSAU COWPER III EARL and
latin motto
93.5cm high
£300-500



58



58
A PAIR OF MAHOGANY BEDSIDE TABLES
IN GEORGE III STYLE
20TH CENTURY
With brass urn finials to each corner of the
tray-top,
Each 82cm high, 56cm wide, 42cm deep
£300-500



59

59
A STRIPED FLATWOVEN KILIM
Approximately 349 x 181cm
£150-250

60
A REGENCY GILTWOOD AND COMPOSITION
WALL MIRROR
CIRCA 1810, IN THE MANNER OF THOMAS FENTHAM
The cornice with applied spheres above the frieze
decorated with a band of dancing maidens flanked by
fluted pilasters topped with acanthus capitals
93cm high, 72cm wide
£300-500



60



61

61
A LATE VICTORIAN CUT GLASS OIL LAMP BASE
LATE 19TH CENTURY
With gilt metal Corinthian capital above attractive cross-cut
stem and spread foot
47.5cm high
Together with a late Victorian cut glass oil lamp base, late
19th century, with gilt metal Corinthian capital above the
faceted stem and stepped foot, 46.5cm high
£500-800

62 Y
AN EBONY AND SPECIMEN WOOD PARQUETRY
INLAID TABLETOP
PROBABLY SINHALESE, 19TH CENTURY
The top inlaid with specimen timbers and central stylised
floral motif
71cm long, 50cm deep, 2cm thick
£400-600



62



63

63
ALPHONSE CYTÈRE (1861-1941)
A PAIR OF LUSTRE BEAR BOOKENDS
BY RAMBERVILLIERS, EARLY 20TH CENTURY
Impressed factory marks
17.5cm high, bases 11.5cm wide, 14cm deep

£200-300

64 Y
A SATINWOON AND EBONY GAMES TABLE
CIRCA 1860

The rectangular top inlaid with a 19 x 19 grid for the game 'Go',
on simulated bamboo supports
62cm high, the top 50 x 51cm

£400-600



64

65
A GEORGE IV MAHOGANY LIBRARY ARMCHAIR
CIRCA 1825, IN THE MANNER OF GILLOWS
The bar back with scroll carved decoration above
the horizontal splat, open arms, and cane seat,
on sabre legs
87cm high

£500-1,000



65



67

66
A SILKWORK PUGIN MANIPLE
LATE 19TH CENTURY
Woven to each side with silver and gold thread rose
headed scrolling foliage above Sanctus Guillelmus
and Sanctus Henricus, each within gothic niche, floral
medallion below, silk and gold thread tassels
58.5cm high

£400-600

67
A BRASS STANDARD LAMP BASE
EARLY 20TH CENTURY, IN THE DUTCH 18TH
CENTURY MANNER
In the form of an oversized candlestick with knopped
stem, sphere, and rectangular base
126cm high

£120-180



66

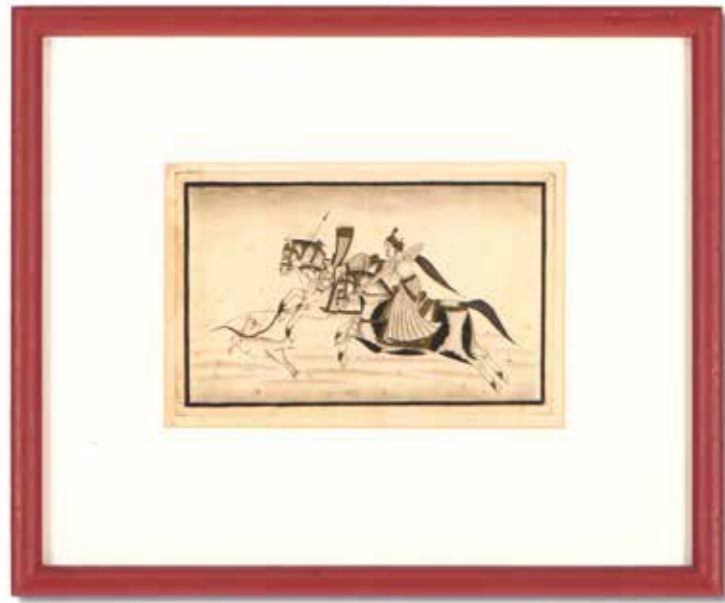
68
A DANISH OAK AND UPHOLSTERED ARMCHAIR
ATTRIBUTED TO THORVALD BINDESBØLL, LATE 19TH OR EARLY
20TH CENTURY
The rectangular back joined by ring turned arm supports, with roundel
headed and studded arm terminals, on studded square section legs
100cm high, 61cm wide

Thorvald Bindsbøll (1846-1908) was one of Denmark's most
important architects and designers.
Provenance:
Three Tastemakers sale, Christie's London, 17 January 2012, lot 364.

£300-500



68



69
MCLAUGHLIN (BRITISH 20TH CENTURY)
THE MAHARAJA OF PATIALA
 Pen and pencil
 Signed with monogram and inscribed 'Patiala' (lower right)
 37 x 25cm (14½ x 9¾ in.)

Together with a Hunt, Moghul School (20th Century),
 bodycolour, 12 x 18.5cm (4½ x 7¼ in.)

£300-500

69



70
A PERSIAN STYLE MAGIC BOWL
 CENTRAL ASIA, 20TH CENTURY
 Of circular form with indented tapering
 base, the centre marked with a boss,
 the finely engraved decoration with
 cusped medallions around and
 talismanic inscriptions overall
 22cm diameter

£100-150

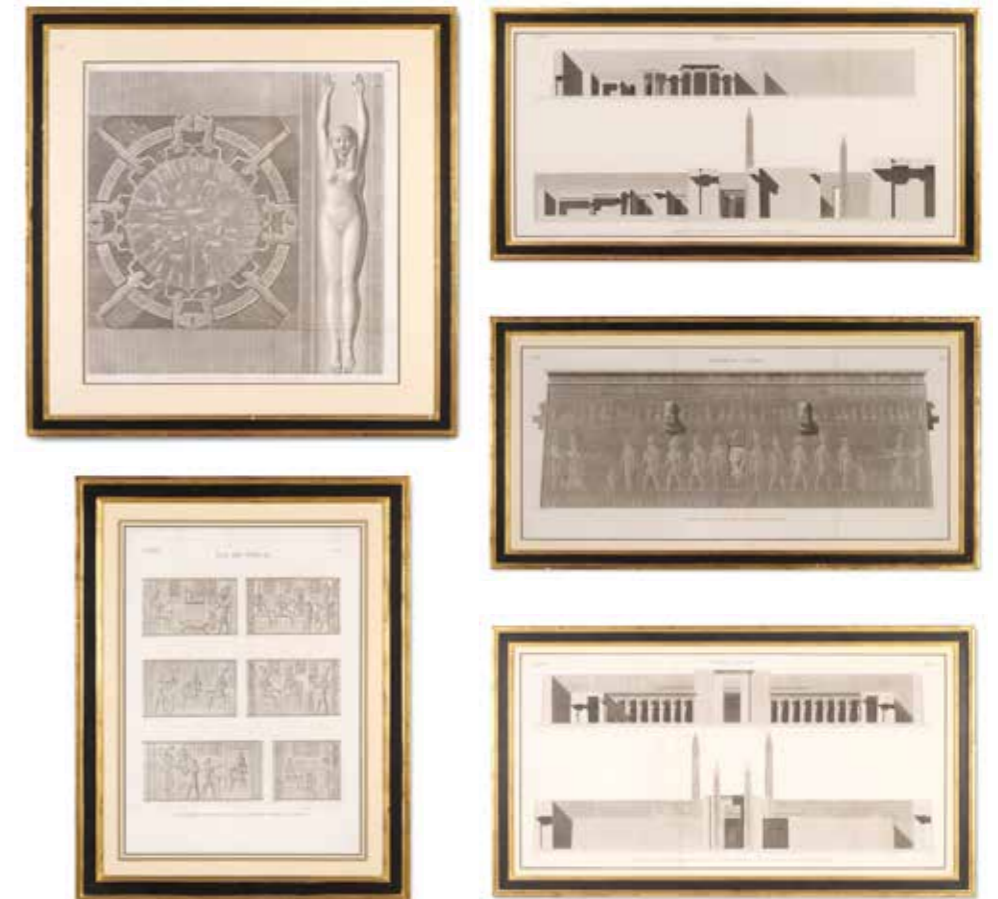
71
A SET OF FOUR GEORGE III
MAHOGANY SIDE CHAIRS
 CIRCA 1800
 Each with ribbon back above the
 upholstered dished seat and square
 section flared legs
 88cm high

£600-800

70



71



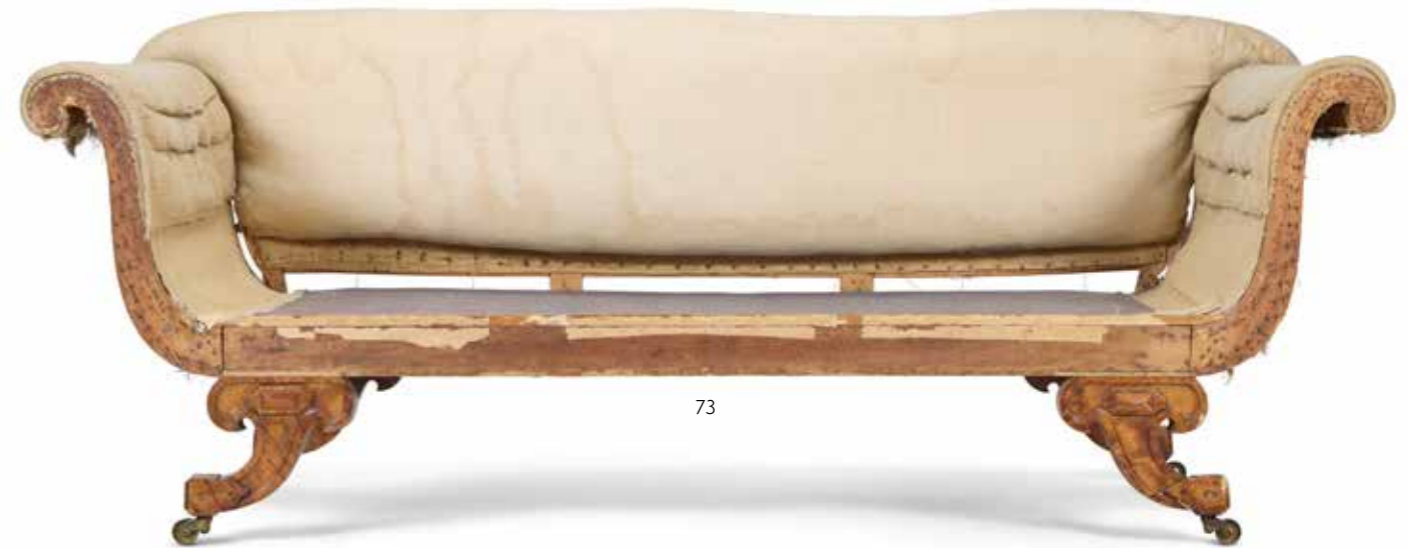
72
FRENCH SCHOOL
A SET OF TWELVE LARGE-
SCALE ENGRAVINGS FROM
THE DENON EGYPTIAN
ALBUMS
 unexamined out of frame
 54 x 118cm (21¼ x 46¼ in.);
 and smaller (12)

Provenance:
 Claridge's Hotel

£3,000-5,000

72





73

73
A VICTORIAN SATIN MAPLE SOFA IN THE 'JACOBETHAN' STYLE
DESIGNED BY EDWARD MIDDLETON BARRY, THIRD QUARTER
19TH CENTURY
86cm high, 213cm wide, 87cm deep

Provenance:
From the Damask Bedroom, Crewe Hall

Once covered in a blousy chintz, this sofa from the late 1860's dates to Edward Middleton Barry's restoration of Crewe Hall after it burnt in 1866. Christie's sold a watercolour of the Great Hall at Crewe in 1998 by Joseph Nash, in the accompanying text they suggest the interior was decorated by Clayton and Bell, and by J. G. Crace.

The house is Jacobean with Edward Blore's remodelling in the early 19th century. Barry respected the Blore and earlier interiors in his restoration and must be responsible for the design of this sofa with its strapwork carving conforming to the plasterwork in the 'Damask Bedroom' where it sat at the end of a four-poster bed.

This sofa remained with the Crewe family until sold at auction in 2024. In May 2015, Sotheby's sold the collection of the Duchess of Roxburghe's contents of West Horsley Place amongst which were various Neo-Jacobean table lamps with a similar strap work design by Edward Middleton Barry.

£3,000-5,000



Crewe Hall

74
A FRENCH MACHINED NEEDLEWORK CARPET IN GOTHIC REVIVAL TASTE
Approximately 329 x 286cm

£400-600

74





75

75
A PAIR OF ARTS & CRAFTS STYLE GLASS HANGING LIGHTS
MODERN, IN THE JAMES POWELL STYLE
40cm high including cord to secondary fitment, 18.5cm diameter

£400-600

76
TWO ART DECO STYLE COPPER AND BRASS WALL MASKS
20TH CENTURY
Planished surface finish, of highly stylised design
25.5cm and 23.8cm high

£100-150



76



77

77Y
AN EAST INDIAN CARVED EBONY
FOLDING TABLE
NAGINA, CIRCA 1860-1870
The rectangular top carved with panels of
foliate scrolls, atop a pierced and carved
folding stand
67cm high, the tray top 70 x 38cm
Produced by highly skilled Muslim craftsmen
working at Nagina in Eastern India in the
1860s. It is rare for its rectangular format
rather than the more commonly seen
octagonal shape. Nagina wares were first
shown internationally at The Great Exhibition
of 1851 in London. Two boxes and an ink
stand with similar dense floral and geometric
decoration from Nagina are in the collection
of the Victoria and Albert Museum, London,
acquired in 1966 (V&A 01168, 01169 and 1172)
(see Amin Jaffer Furniture From British India
and Ceylon, V&A Publications 2001, p.265
nos. 91-3).

£1,500-2,500

78
A SET OF FOUR EDWARDIAN SILVERED
SHELL BACK WALL LIGHTS
EARLY 20TH CENTURY
Each with scallop shell back and
projecting sconce
31cm high, 28cm wide

Provenance:
Claridge's Hotel

£800-1,200



78



79
A PAIR OF WALNUT WING ARMCHAIRS
IN GEORGE II STYLE
LATE 19TH OR EARLY 20TH CENTURY
In need of reupholstery, each with calico
covering, on carved cabriole legs
Each 105cm high

£1,500-2,500

79





80
 A MATCHED PAIR OF KOYILANDY (INDIAN)
 COCONUT AND INLAID BRASS HOOKAH BASES
 EARLY 20TH CENTURY AND LATER MOUNTED
 AS LAMPS
 Each with oviform body incorporating a coconut to
 the central section, with brass pierced and overlay
 foliate decoration throughout, with shades
 The bases 31.5cm high, 53cm high overall
 including fitments

£1,000-1,500



80

81
 A HOSHIARPUR HARDWOOD, BRASS
 AND COPPER INLAID OCCASIONAL
 TABLE
 CIRCA 1900
 The octagonal top with central stylised floral
 motifs, atop a pierced and further brass inlaid
 folding stand
 63cm high, 61cm wide

£800-1,200



81



82

82
A PAIR OF MAHOGANY AND
EBONISED PLATE OR
SALVER STANDS
20TH CENTURY, IN THE
MANNER OF GILLOWS
each 39cm high, 29cm wide,
16cm deep

Together with a Victorian walnut
plate stand, second half 19th
Century, the shaped back about
a velvet red and square base,
52cm high

£300-500

83
A SET OF FOUR SILVER COW CREAMERS
MAKER'S MARK L C LD, BIRMINGHAM LATE 20TH CENTURY
The covers chased with a fly
11cm (4 1/4in) long
886g (28.5 oz)

£600-800



83

84
A PAIR OF GEORGE III HARDWOOD, POSSIBLY PADOUK,
JARDINIERS
CIRCA 1770
Each of coopered construction, with removable liner to the interiors
Each 26cm high, 49cm diameter

£500-800



84

85
AFTER FRANCESCO ANTONIO FRANZONI
AN ALABASTER FIGURE OF A BULL
19TH CENTURY
Depicted standing, shaped rectangular base
34cm high, base 35 by 11cm

£700-1,000



85



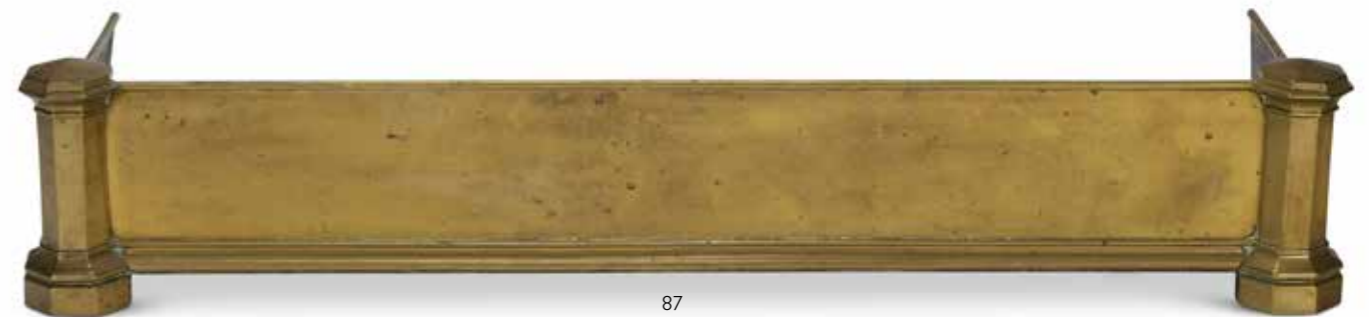
86

86
AN UNUSUAL GEORGE II MAHOGANY STOOL
CIRCA 1750
In need of reupholstery, the oval top above tapering
legs each terminating in a large claw and ball foot
46cm high, 47cm wide, 35cm deep

£400-600

87
A GOTHIC BRASS KERB FENDER
19TH CENTURY, IN THE STYLE OF/POSSIBLY BY
WILLIAM PORDEN
With projecting faceted octagonal turret ends
overall 119cm wide, 22.5cm high

£300-500



87



88

88
AN ARTS & CRAFTS SILVER PLATED
CANDLESTICK
CIRCA 1905
With later ebonised faux candle above the
tulip form sconce and planished stem, on a
circular foot
51cm high overall

£300-500



89

89
A FLIGHT OF HARDWOOD AND BRASS
BOUND LIBRARY STEPS
20TH CENTURY
In the form of a sledge, unfolding to form
the steps
140cm high (erect), 82cm high (closed)

£200-300

90
A PAIR OF GEORGE IV MAHOGANY
BEDSIDE CABINETS
CIRCA 1830, IN THE MANNER OF
GILLOWS
74cm high, 47cm wide, 41cm deep

£1,000-1,500

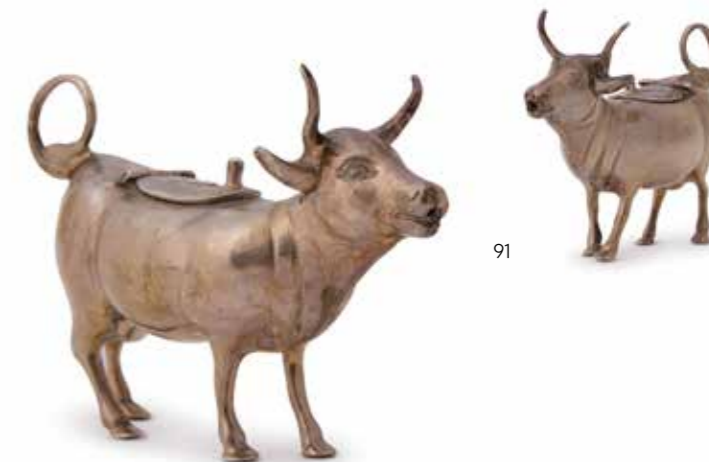


90



91
A PAIR OF SILVER COLOURED COW CREAMERS
STAMPED STERLING 925
The covers chased with a fly
11.5cm (4 1/2in) long
203g (6.5 oz)

£200-300



91



92

92
A SECESSIONIST STYLE CONTINENTAL SILVER MOUNTED AND
BLUE GLASS BOWL
UNMARKED, POSSIBLY AUSTRIAN, CIRCA 1920
Engraved with a stylised foliate band, on a cable twist and circular foot
13cm (5in) diameter

£100-150

93
A GEORGE III SILVER BALUSTER TANKARD
MAKER'S MARK H.T (NOT TRACED), LONDON 1766
With a loop thumb piece to the ogee domed cover, a double
scroll handle, girdle, engraved DW and on a circular foot
19cm (7 1/2in) high
776g (24.95 oz)

£400-600



93



94

94
A GEORGE I SILVER SPICE BOX
 NO APPARENT MAKER'S MARK,
 LONDON 1724
 The hinged covers engraved with a crest
 and an armorial, a central nutmeg grater
 with steel grate, ball finial to the domed
 cover and the base engraved with a coronet
 above a monogram, on four scroll legs
 12cm (4 3/4in) long
 346g (11.15 oz) gross

£1,000-1,500



95

95
**A VICTORIAN MAHOGANY CHEST OF
 DRAWERS**
 CIRCA 1890
 The rectangular top above an arrangement of
 three drawers, stamped registration mark to
 the reverse of handles
 82cm high, 79cm wide, 48cm deep

£400-600

96
WILLIAM CLERIHEW (SCOTTISH 1811-1870)
KANDY LAKE, SRI LANKA
 Watercolour
 Titled and dated '1st March 1851' (upper right)
 20 x 27cm (7 3/4 x 10 1/2 in.)

Together with an Indian View of a River, English School 19th century,
 watercolour, 19.5 x 31cm (7 1/2 x 12 in.)

£600-800



96



97

97
**A SECTION OF CARVED LIMESTONE
 CORNER TRACERY**
 12TH/13TH CENTURY
 With band of floral balustrade above
 remnants of carved openwork, vaulted
 arch below
 40cm high, 31.5cm wide

£300-500

98 Y
**A LACQUERED AND MOTHER-OF-
 PEARL INLAID CIRCULAR TRAY**
 KOREAN, 19TH CENTURY
 Shaped circular form, 91cm diameter

Together with a carved hardwood
 baluster base decorated with foliate
 scrolls, Burmese, 74cm high
 78cm high overall

£400-600



98





99
A PAIR OF BRONZE THREE BRANCH WALL LIGHTS
 20TH CENTURY
 Each with three naturalistic tree branches, suspended seed pods to backplate
 approximately 44cm high overall, 34cm wide, 29cm protuberance

£300-500

99



100

100
A BURR WOOD LOW OCCASIONAL TABLE
 MID 20TH CENTURY

The slice-top with naturalistic edge and polished surface, on conforming supports
 42cm high, 86cm wide, 56cm deep

£200-400



101

101
A PAIR OF SWISS CARVED WALNUT AND INLAID HALL CHAIRS
 CIRCA 1880

The upright backs carved with floral motifs and fan inlay, the underside of one with old paper label for 'JAMES A BUTTI'
 91cm high

James A. Butti, Fine Art Collector and Dealer in Articles of Virtu, operated from 7, Queen Street, Edinburgh.

£200-400



102 (suite of four)



102
A SUITE OF FOUR CONVEX WALL LANTERNS
 BY COLEFAX & FOWLER,
 CIRCA 1960

Comprising a pair of corner lanterns
 each 38cm high, 23cm wide, 23cm deep

Together with a pair of wall lanterns, one without glass, each 44cm high, 31cm wide, 21cm deep

£300-500



103

103
A LATE VICTORIAN BRASS AND VASELINE GLASS STUDENT'S LAMP
 CIRCA 1900

The adjustable arm fitted with a Vaseline glass bell-shaped shade and mounted on a shaft with circular base, the arm with Registration number 255611
 49cm high

Together with an Edwardian brass desk lamp, early 20th century, marked British made and with further registration number, 42cm high

£300-500



104
A GILT BRASS AND LEATHER INSET LOW CENTRE TABLE
 MID 20TH CENTURY

The leather inset top above lion mask and monopodia supports and with a conforming undertier
 57cm high, 90cm wide, 45.5cm deep

£700-1,000



104



105

105
AN INDIAN POLYCHROME DECORATED BOX
RAJASTHAN, FIRST 20TH CENTURY
With panels of dancing figure within floral borders
21cm high, 33cm wide, 20.5cm deep

£300-500



106

106 Y
A CHINESE ROSEWOOD STAND
LATE 19TH CENTURY
With arrangement of various height shelves and stands
111cm high, 77cm wide, 23cm deep

£400-600



107

107
A WALNUT AND RED VELVET UPHOLSTERED
ARMCHAIR IN LATE 17TH CENTURY STYLE
LATE 19TH CENTURY
With bobbin turned supports throughout
127cm high

£400-600

108
A REGENCY GILT BRONZE CANDLESTICK
ENGLISH, CIRCA 1820

With scrolling foliate capital on reeded shaft, Herculean style triform animal leg base, now adapted for electricity
57cm high overall including finit

£300-500



108



109

109
A BLACK LACQUERED, JAPANNED,
AND PARCEL GILT SIDE TABLE
19TH CENTURY
78cm high, 92cm wide, 48cm deep

£250-350



110

110 e
GEORGE IV.- [SAMS (WILLIAM)] PANORAMA OF THE CORONATION OF GEORGE IV
19th July 1821

Hand-held panorama reel of the coronation presented in one long pictorial strip, numbered sections, long pictorial strip, wound on a bobbin inside the casing, is drawn out through a slot; thus the procession passes before the viewer's eyes, in original boxwood drum case with printed decoration, some loss to first part with the King's Herb Woman at the head as well as other herb maidens, George IV appears at section 102, missing the printmakers signature at the end, etching and aquatint with hand-colouring on wove paper, approx. 80mmx8970mm.

£200-300





111

111
A CREAM SILK AND POLYCHROME EMBROIDERED PANEL
CHINESE, 19TH CENTURY
Embroidered with central flower head and scrolling flowers, later backed onto cream silk
the panel 253cm long, 260cm wide

£1,500-2,500

112
A SPECIMEN MARBLE ROUNDEL
NEAPOLITAN, 18TH CENTURY AND LATER
Possibly from a marble floor and later re-laid on a secondary
piece of Bardiglio, restored
46.5cm diameter, 3.5cm deep

£800-1,200

114
A PAINTED HARDWOOD OPEN ARM CHAIR
PROBABLY ANGLO-INDIAN, 19TH CENTURY
The bar back above a pierced horizontal panel-splat,
with caned seat and reeded legs
83cm high

£200-300



112

113
A MAHOGANY AND GLAZED WALL CABINET
LATE 19TH CENTURY
With a pair of glazed doors each with four oval panes enclosing shelves
77cm high, 145cm wide, 22.5cm deep

£400-600



114



113



115

115
A SMALL EDWARDIAN GILT BRASS HALL LANTERN
BY BAINBRIDGE AND REYNOLDS, EARLY 20TH CENTURY
With frosted glass shade
36cm high

Together with another smaller example, 35.5cm high

£200-400

116
CERAMANO (1959-1984); A LARGE WEST GERMAN
POLYCHROME CERAMIC VASE
MID 20TH CENTURY
Geometric banded pattern glaze on a red clay body, hand
inscribed signature to underside
52cm high

£200-300



116

117
A GEORGE III MAHOGANY ARMCHAIR
CIRCA 1770
The pierced back with knopped vertical uprights
above the dished seat and square section legs
93cm high

117

£300-500



118
A CARVED OAK AND WALNUT
'ANTIQUARIAN' BOX
SECOND QUARTER 19TH CENTURY, IN
THE MANNER OF RICHARD BRIDGENS
The 'strapwork' top centred by an oval
applied with a brass heraldic crest beneath
a coronet, the hinged lid enclosing a later
lined interior, the lock signed W. Leuchars,
Piccadilly and numbered 1092 together
with further retailer's brass plaque, the
interior of the lid containing an interior
scene by Joseph Nash, and a second loose
watercolour sketch, also by Joseph Nash,
of Haddon Hall

16cm high, 56cm wide, 43cm deep

£800-1,200



118

119
A GOTHIC REVIVAL CARVED WALNUT AND GREEN VELVET
UPHOLSTERED ARMCHAIR
CIRCA 1870, IN THE MANNER OF EUGÈNE VIOLLET-LE-DUC (1814-1879)
The carved showframe with mythical beasts to the arms, the sides of the frame
carved with foliate scrolls
120cm high

Provenance:
Purchased from Paul Reeves

£700-1,000



119

120
A PAIR OF STAFFORDSHIRE BLACK
BASALT MODELS OF RECUMBENT LIONS
19TH CENTURY
After the Wedgwood originals, un-marked,
12.5cm x 22cm x 6.5cm

£300-500



120



122

121
A PALMER & CO PATENT BRONZED LAMP BASE
LATE 19TH CENTURY AND LATER
Of octagonal tapering form with rhomboid flowerhead
decoration, marked PALMERS PATENT 300 to underside,
later fitted for electricity
63cm high overall

£200-400

122
A PATINATED METAL AND BRASS MOUNTED SIDE CHAIR
SECOND HALF 19TH CENTURY

Formed from various scabbards and sword elements
97cm high

Provenance:

Sotheby's, Important Continental Furniture, Ceramics And Clocks,
02 December 2008, Lot 262

£200-300

123
A CARVED WALNUT STOOL OR LOW CENTRE TABLE IN BAROQUE TASTE
19TH CENTURY

The rectangular top above end supports, each with swags and festoons
41cm high, 70cm wide, 37cm deep

£300-500



123



121



124

124
A SET OF FOUR LIFESIZE BEATLES POSTERS
 LATE 20TH CENTURY
 185cm high, 62cm wide

These were won in 1969 by a Beatles fan.
 The reverse is stamped "Fan Fotos, 4A Weighouse St. London W1. Photo ABC TV.

£800-1,200

125
A CHINESE EXPORT LEATHER AND
CAMPHOR CHEST
 19TH CENTURY
 The leather and stud exterior with vacant
 plaque to the lid, the interior camphor
 wood lined
 42cm high, 92cm wide, 47cm deep

£300-500



125



126

126
A PAIR OF PALE OAK CRICKET TABLES
 FIRST HALF 20TH CENTURY
 Each round top above tapering legs terminating with pad feet
 59cm high, 58cm diameter

£400-600

127
A MAHOGANY AND UPHOLSTERED WING ARMCHAIR
IN GEORGE III STYLE
 BY HOWARD & SONS, LATE 19TH CENTURY
 One rear leg stamped for the maker and serial numbered
 2482 5335, with white linen cover
 112cm high

£800-1,200



127

128

A PAIR OF GILT BRASS PRICKET
CANDLESTICKS IN THE MEDIEVAL STYLE
LATE 19TH CENTURY, IN THE MANNER
OF VIOLET LE DUC

The pricket scone above a stem with
pierced knop and trifirm base
46cm high

£400-600



128

129

A GRADUATED SET OF THREE
CARVED MAHOGANY WALL
BRACKETS OR CORBELS
EARLY 20TH CENTURY

Each of crisp carved spreading acanthus
leaf form
Single 27cm high, 37cm wide, pair
smaller 24cm high, 31cm wide

£300-500



129 (set of three)

130

AN EBONISED AND SILVERED WOOD
STANDARD LAMP

POSSIBLY SPANISH, 19TH CENTURY

The turned stem above a conforming base
and three feet
149cm high

£200-300



130

131

A PAIR OF REGENCY MAHOGANY STOOLS
CIRCA 1820, POSSIBLY BY GILLOWS

In need of re-upholstery, each with remnants of
horsehair and hessian to the seats above rails and
tapering reeded legs
43.5cm high, 33cm wide, 28cm deep

£500-800



131



132

132
A FLIGHT OF THREE MAHOGANY WALL
SHELVES IN GEORGE III STYLE
19TH CENTURY
With pierced fretwork in Chinese
Chippendale style
65cm high, 62cm wide, 20.5cm deep

£400-600

133
A BRONZE TIFFANY STUDIOS NEW YORK
ZODIAC PATTERN INKWELL
EARLY 20TH CENTURY
Stamped to base 'TIFFANY STUDIOS, NEW
YORK, 1072'
10cm high, 18cm diameter

£300-500



133

134
A GEORGE III MAHOGANY COMMODORE
OR THUNDER BOX
CIRCA 1780
With two drawers above a slide with false
drawer fronts revealing a further drawer
76cm high, 65cm wide, 45cm deep

£200-300



134

135
A PAIR OF GEORGE III MAHOGANY TRIPOD
TABLES
CIRCA 1780
Each with an octagonal top above a turned stem
with baluster vase and three outswept legs
Each 71cm high, 47cm wide

£1,200-1,800



135

136
A SET OF SIX WROUGHT-IRON DINING CHAIRS
MID-20TH CENTURY
With black patination, applied scallop shell details, and
bespoke silk woven 'coral' pattern horsehair seats
98cm high, 62cm wide, 39.5cm deep

This model was used in Cartier, New York

£1,200-1,800



136



137

137
A LACQUERED WOOD BARREL SHAPED CONTAINER
CHINESE, 19TH CENTURY
The sides with traces of lacquered decoration and lion mask handles, the cover carved with scrolling flowers
40cm high

£300-500



138

138
A CHINESE HARDWOOD OCCASIONAL TABLE
CIRCA 1900
Of small proportion
56cm high, 39cm wide, 25cm deep

£200-300



139

139
A CARVED TEAK AND POLYCHROME
DECORATED THREE FOLD SCREEN
BY JOHN LOCKWOOD KIPLING AND BHAI RAM
SINGH, MAYO SCHOOL OF ART, LAHORE, LATE
19TH CENTURY
Inset with painted and carved panels
Each panel 197cm high, 51.5cm wide

£800-1,200

140 λ
BERNARD MENINSKY (BRITISH 1891-1959)
TOWN BY THE SEA
Watercolour
Signed (lower right)
30 x 41cm (11¾ x 16 in.)

£300-500



140

141
ENGLISH SCHOOL (20TH CENTURY)
SEASCAPE
Oil on board
11 x 16cm (4¼ x 6¼ in.)

£200-300



141



142
A PAIR OF MEIJI BRONZE LANTERNS
 JAPANESE, 19TH CENTURY
 With scrolling dragons on a baluster stem, later fitted and wired as lamps
 63cm high to top of fitment

£600-800



142



143

143 λ
DAVID LLOYD-JONES (ENGLISH 1928-1994) - A LARGE DISC-RIM VASE
 20TH CENTURY
 Stoneware, with terracotta coloured glaze
 Impressed artist's seal.
 35cm high

£100-150



144

144
A PAIR OF WALNUT AND PARQUETRY SIDE TABLES
 20TH CENTURY, IN THE 18TH CENTURY ITALIAN MANNER
 Each with a frieze drawer above ropetwist legs and joined by a shaped undertier
 85cm high, 80cm wide, 40cm deep

£2,000-3,000



145
PAUL PHILP (BRITISH, b.1941-)
A FLATTENED VESSEL
 Stoneware, mottled cream glaze on a lightly textured surface, with two small lug handles
 26.5cm high

£600-800

145



146
A VICTORIAN RENAISSANCE REVIVAL OAK OCCASIONAL TABLE
 CIRCA 1860
 The octagonal top above a stiff leaf stem with standing female figure holding a heraldic pennant
 72cm high, 64cm wide, 64cm deep

£400-600

146

147
A PAIR OF ART DECO CHROMED METAL DOG GRATES
 CIRCA 1930

Each of cuboid form and with billet bars to the rear
 each fire dog 30cm high, 10cm square, approximately 70cm wide overall with the grate

£600-800



147



148
A ULLISE CANTAGALLI TWO-HANDLED DOUBLE-SPOUTED VASE
 LATE 19TH CENTURY
 Decorated with *groteschi*, cockerel mark,
 13.5cm high

Together with two modern Italian (Rongoni)
 Deruta style tondino dishes, 21cm diameter

£200-300



148



149

149
A SET OF FOUR GREEN VELVET CUSHIONS
 Each with inset *pukthan* silk embroidery
 approximately 43 by 43cm

£300-500

150
A PAIR OF CARVED AND PARCEL GILT ARMCHAIRS IN FRENCH EMPIRE STYLE
 MID 20TH CENTURY, ATTRIBUTED TO MAISON JANSEN
 102cm high

£1,000-2,000



150



151

151
AKIKO HIRAI (JAPANESE, B.1970-)
DOMED VESSEL
MODERN
Stoneware, with dry cracked white slip, with
"flowing" celadon glaze to top on one side
Painted maker's mark to underside
Uzukumaru II
20cm high

Provenance:
Katherine House Gallery, Marlborough

£800-1,200



152

152 λ
HANS VANGSO (DANISH, b.1950)
A VASE
2020
Red glazed stoneware body, with thick,
textured white "lava" glaze over neck
and shoulder
Impressed maker's seal to underside
30cm high

Provenance:
Oxford Ceramics

£1,000-1,500

153
A NORTH ITALIAN CARVED GILTWOOD
AND POLYCHROME PAINTED BUFFET
BY GAETANO GOSI (1835-92) AND
ANGELO QUERCI (1838-CIRCA 1900),
SIENA, CIRCA 1860
142cm high, 107cm wide, 47cm deep

Both were pupils of Pietro Giusti (1822-1878).

For biographies of Gosi and Querci see
Simone Chiarugi, Botteghe di Mobiliari in
Toscana 1780-1900, 1994, I, p. 492 and
p. 530.

£1,000-1,500



153



154

154
AN EARLY VICTORIAN INLAID HORN
SNUFF BOX
 MID 19TH CENTURY
 Inlaid to the top in silver coloured metal and nacre with huntsman and lion
 9.5cm wide, 2.3cm high

Together with a circular papier mache snuff box, print decoration to the top *"..in the back slums"*, 8.4cm diameter

£100-150



155

155
AN OLIVEWOOD OCTAGONAL
OCCASIONAL TABLE
 20TH CENTURY
 The underside of the top with multiple stamps for F. VESTER, JERUSALEM
 50cm high, 40cm wide

F. Vester is probably Frederick Vester of the American Colony Stone, Jerusalem

£200-300

156
A COLLECTION OF BLUE GLAZED
POTTERY
 VARIOUS DATES 20TH CENTURY
 Various sizes and hues

Together with two various gourd shaped vases with crystalline glaze, the smaller 8cm high

£200-300



156



158

158
A GILT AND PATINATED TABLE LAMP
 MID 20TH CENTURY, IN THE MANNER
 OF MAISON JANSEN
 The openwork body formed as arrowheads
 64cm high overall

£250-350



157

157
A LATE VICTORIAN OAK AND GILT BRASS
EAGLE HEAD PATTERN WALL MOUNTED
GONG
 BY WILLIAM TONKS & SONS, CIRCA 1900
 The projecting avian's head with snake in its mouth suspending the gong, leather bound striker, impressed marks to the rear
 The oak mount 44cm high, 29cm wide

£200-400



159

159
A GEORGE IV BURR OAK OCCASIONAL TABLE
 CIRCA 1830
 The circular top and apron above a turned stem with carved lappet and acorn vase, triform base and bun feet
 74cm high, 49cm diameter

An almost identical example sold in these rooms, Robert Kime, The Personal Collection, 4th October 2023, lot 259

£600-900

160
A SET OF THREE GEORGE IV
POLISHED STEEL FIRE TOOLS
CIRCA 1830

Comprising poker, tongs, and
shovel, each with a faceted handle
above the plain shafts
poker 72cm long

£300-500



160



161



161
A PAIR OF AESTHETIC MOVEMENT LILY PAD PATTERN
WALL LIGHTS

CIRCA 1880 AND LATER FITTED FOR ELECTRICITY
Each with coppered metal backplate with frog stalking a fly and
fitted with a projecting floriform sconce, stamped Rd 17801
28cm high, 18cm wide, 12cm protuberance

£200-300

162
A PAIR OF RED PAINTED
'GOTHIC-FORM' SIDE
CHAIRS 'NO. 38'
LAST QUARTER 19TH
CENTURY, BY GEBRUDER
THONET

Each of red painted steam
bent beech and with velvet
upholstered seats
112cm high

For the Thonet catalogue design
for this chair and a companion
sofa, see Christopher Wilk,
Thonet: 150 Years of Furniture,
1980, p. 53.

£600-1,000



162



163

163
 A PAIR OF FRENCH JAPONISME GILT AND PATINATED METAL TABLE OIL LAMPS
 CIRCA 1870
 The burner marked J.S. above a bell topped reservoir and pierced foliate scroll base
 52cm high overall

£800-1,200

164
 A PAIR OF RED PAINTED GARDEN CHAIRS
 20TH CENTURY, IN THE MANNER OF
 RENE PROU
 Each 99cm high

£500-800



164

165
 FOLLOWER OF SEBASTIANO LAZZARI
 A SQUAWKING PARROT
 Oil on canvas
 33 x 37cm (12 x 14½ in.)

£800-1,200

166
 A LATE VICTORIAN STAINED BEECH AND PARCEL GILT LUGGAGE STAND
 CIRCA 1900
 The slatted top above the turned supports and conforming stretchers

£200-300



165



166



167

A GEORGE III LEATHER WRITING OR NECESSAIRE BOX
BY WILLIAM CHAPPLE SNR, CIRCA 1780-1800

Red morocco leather bound, plaque to the tapering lid inscribed "Miss A Scott", interior with paper maker's label: "William Chappel, Late Garrons, Trunk, Case & Box Maker. 49 Corner of St Paul's Church Yard facing Cheapside, Trunks, chests &c for the East and West India Trade" 25.2cm wide, 11.5cm high, 17.5cm deep

This particular label denoting the address at 49 corresponds exactly with the label to be found on George Washington's Camp Chest from 1783 by the same maker, held in the Henry Ford Museum, Dearbourn Michigan (Object ID 29.483.4).



167

£200-400

168 Y

A VICTORIAN SPECIMEN WOOD
PARQUETRY BOX

MID 19TH CENTURY

Probably a sewing box, with stellar inlaid lid above chequerboard sides, tumbling cube front, fitted interior with pink and gold paper lining, turned ivory lid knob 39cm wide, 15cm high, 21.5cm deep

Together with a rosewood and pale wood keepsake box, of spiral segmented form, interior with wax impression of a regal lady, probably Elizabeth I, 7cm diameter



168

£200-400

169 Y

A NEW ZEALAND
SPECIMEN WOOD
JEWELLERY BOX

ATTRIBUTED TO WILLIAM
NORRIE, LATE 19TH/
EARLY 20TH CENTURY

Stellar inlaid parquetry lid in a variety of indigenous woods, comprising totara, puriri, mottled kauri, kohekohe, rewarewa, maire and others, interior with single lift out tray with original blue velvet lining, the whole with characteristic dovetail joints and short turned feet 42cm wide, 20.5cm high, 24cm deep



169

£600-1,000



170

170
A BRONZED TERRACOTTA CLASSICAL FEMALE TORSO
ITALIAN OR FRENCH, EARLY 19TH CENTURY
Possibly depicting Daphne from Ovid's Metamorphoses, mounted on velvet lined giltwood frame
figure 24.5cm high, frame 46 by 36cm

£1,000-1,500

171 Y
AN AUSTRIAN INLAID 'GYPSY' TABLE
LATE 19TH CENTURY, BY
FRANZ WIESAUER
The hexagonal top marquetry and ivory inlaid with coat of arms for Clan Stewart of Appin and latin motto Quihidder Will Zie (Whither Will Ye), surrounded by an inlaid band with acorns and foliage, the underside with paper label for the maker
61cm high, 52cm wide

Please note, Dreweatts have applied for a de minimus exemption for this lot, reference number: JEP9M9WE

£300-400



171

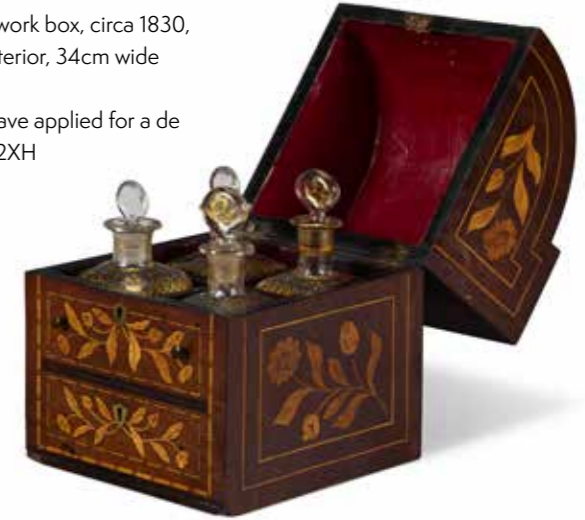
173 Y
A DUTCH MARQUETRY INLAID MAHOGANY DECANTER CASE
CIRCA 1840
The hinged lid enclosing 4 parcel gilt glass bottles
case 26cm high, 19cm wide, 19cm deep

Together with a Victorian walnut and brass mounted casket, fitted for stationery, by Melliship & Harris,
22cm wide

And a George IV rosewood work box, circa 1830, with velvet lined and fitted interior, 34cm wide

Please note that Dreweatts have applied for a de minimus license; ref: 3BN7D2XH

£400-600



173 (part lot)



174

174
A GEORGE III MAHOGANY CARD TABLE
CIRCA 1760
The serpentine top with egg and dart moulded edge folding to reveal a baize lined playing surface, on conforming square section legs
74cm high, 85cm wide, 42cm deep

£300-500

172
A PAIR OF REGENCY MAHOGANY AND RED LEATHER UPHOLSTERED OPEN ARMCHAIRS
CIRCA 1820
With reeded bar back above two further horizontal splats, open arms and red leather seats
87cm high

£600-800

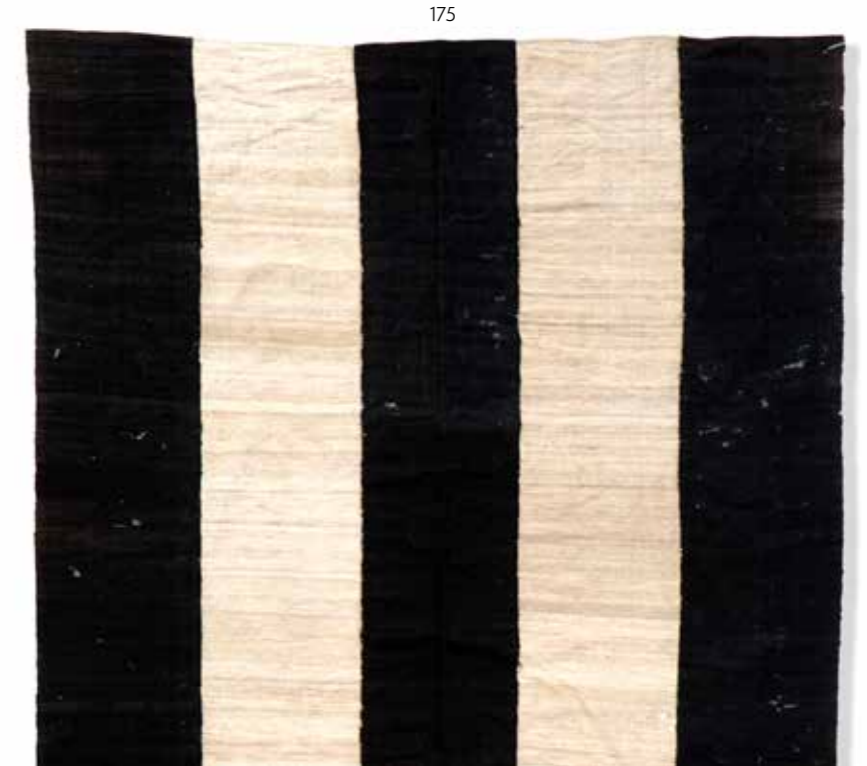


172



175
A STRIPED FLAT WOVEN KILIM
Approximately 288 x 172cm

£150-250



175



176

176
ATTRIBUTED TO AUDOUX-MINET
A PAIR OF ROPE & VELLUM WALL LANTERNS
MID 20TH CENTURY

The lanterns formed as 19th century coaching lights with the bulb shaded by a later vellum tube
60cm high overall, 16cm wide, 20cm deep

£800-1,200

177
AN ARTS & CRAFTS OAK CENTRE TABLE
CIRCA 1900

The circular tilt top above a three supports and T-stretcher
76cm high, 110cm wide

£300-500



177



178
AN OAK AND RUSH 'STRONZA' ORKNEY ARMCHAIR
CIRCA 1900, IN THE MANNER OF DAVID KIRKNESS FOR LIBERTY
Of typical 'tub' form with straw back above the seat and on square section legs
107cm high

£500-800

178



179
AN EARLY VICTORIAN LAMP BASE
 MID 19TH CENTURY AND LATER
 Bronze and bronzed metal, scrolling foliate capital above plain stem, stepped scrolling triform base, later fitted for electricity
 74cm high

£200-400

179



180
A MAHOGANY COFFER IN GEORGE II STYLE
 19TH CENTURY
 Of small proportion, the hinged lid enclosing a compartment and with frieze drawer, on bracket feet
 28cm high, 43cm wide, 25cm deep

£250-350

180



181

181
A PAIR OF LEATHER ARMCHAIRS
 FRENCH, MID-20TH CENTURY, IN THE MANNER OF JACQUES QUINET
 Frame and cushions completely covered in brown leather, with stitch detail edges, and a buckle fastening to the reverse of the back panels
 88cm high, 61cm wide, 61cm deep

£400-600



182
A BUFF PAINTED IRON FRAMED CONVEX WALL MIRROR
 20TH CENTURY
 Of large proportion
 124cm diameter

£800-1,200

182



183

183
A LARGE PAIR OF WRYTHEN BLOWN GLASS VASES
 PROBABLY JAMES POWELL WHITEFRIARS.
 LATE 19TH CENTURY
 each 43cm high

£200-300



184
A MAHOGANY WARDROBE
 CIRCA 1830 AND LATER
 With a pair of hanging cabinets, the interior fitted with hooks and pegs
 212cm high, 131cm wide, 58cm deep

£400-600

184



185

185
A PAIR OF AESTHETIC PERIOD IRON FIRE DOGS
 CIRCA 1890
 Each with T-bar above tripod stand bases
 17cm high, 18cm wide

£200-300

186
A PAIR OF POKER WORK AND INLAID OCTAGONAL SIDE TABLES
 EARLY 20TH CENTURY, IN THE MANNER OF LIBERTY
 The tops inlaid with a leaping antelope and the sides decorated with apple trees, both in the manner of tile designs by William de Morgan
 50cm high, 36cm wide

£600-800

187
A SET OF SIX ARTS & CRAFTS OAK OPEN ARM CHAIRS
 CIRCA 1910, BY HEALS
 The backs with vertical shaped splat above a dished seat, each with an inlaid button with maker's details to the rear rail
 100cm high

Provenance:
 The Bodleian Library, Oxford

£800-1,200



186



187



188

188
A CREAM SILK PANEL EMBROIDERED WITH TWO COCKERELS
 CHINESE, 19TH CENTURY
 Inscribed 'Two fighting cockerels' top right
 138cm high, 148cm wide

Together with a burgundy silk panel embroidered with cranes, Meiji-Taisho period, made up of four stitched panels, 137cm high, 129cm wide (at widest point)

£600-800





189
**AN UNUSUAL PAIR OF BRASS MOUNTED
 BLUED STEEL RIFLE BAYONET TABLE
 LAMPS**

FRANCO-PRUSSIAN, MID/LATE CENTURY
 AND LATER

Each with cluster of six socket bayonets the
 scrolled over tips above blades, socket bases
 with musket balls above lion paw feet, each
 bearing a serial number, formerly with oil lamp
 reservoirs, now fitted for electricity
 bases 56cm high overall

Repurposed armaments are unusual
 decorative items- more commonly found
 utilising 20th century elements. For
 comparable examples please see:
 "A set of six French gilt-metal and wrought
 steel chairs made out of French regulation
 weapons" sold Sotheby's, Important
 Continental Furniture, Ceramics and Clocks,
 2nd December 2008, lot 262 (sold £17,500).

"A Napoleon III steel twenty-eight light
 chandelier, circa 1870, made from bayonet
 handles and blades from the Franco/Prussian
 war" sold Christie's, Out of The Ordinary, 3rd
 September 2014, lot 144 (sold £7,500).

£1,000-1,500



189



190

190
AN ESTATE-MADE OAK CENTRE TABLE
 ENGLISH, CIRCA 1800

The associated top above a frieze of applied strapwork on similar square
 tapering legs and later block feet, the frieze rails reduced in depth
 79cm high, 79cm wide, 230cm long

£1,000-2,000



191
A SMALL GILTWOOD AND ROYAL
BLUE PAINTED SIX LIGHT CHANDELIER
POSSIBLY BY LENYGTON & MORANT,
EARLY 20TH CENTURY
63cm high, 62cm wide

For a comparable example of giltwood chandeliers by Lenygton & Morant Ltd. in the Royal Collection but with crown surmount and in two tiers, please see the three 12 light chandeliers in the Throne Room, Windsor Castle, presented to Her Majesty Queen Elizabeth by The Hon. Sir Richard Molyneux, KCVO, 25 March 1939 (RCIN 35801).

£400-600

191



192

192
A JAPANESE SILVER APPLIED BRONZE
HIBACHI BRAZIER
19TH CENTURY
With flanking handles
61cm wide

£300-500



193

193
A TAPESTRY COVERED FOUR FOLD SCREEN
CIRCA 1900
Each panel covered with
a floral motif
Each 199cm high, 54cm wide

£300-500

194
A REFORMED GOTHIC CARVED OAK DRESSING MIRROR
BY CHARLES HINDLEY, CIRCA 1880
The underside stencilled C. HINDLEY / 164 OXFORD STREET /
LONDON
88cm high, 78cm wide, 28cm deep

£300-500



194

195 Y
A SPECIMEN PARQUETRY, EBONY AND EBONISED
OCCASIONAL TABLE
SINHALESE, 19TH CENTURY
The square tilt top with figured, oyster, and burr veneers
74cm high, 61.5cm wide, 61.5cm deep

£400-600



195

196
A CARVED STONE RAM HEAD
20TH CENTURY
Styled on an ecclesiastical corbel fragment
30cm high, 29cm wide

£200-400



196



197

197
COTSWOLD SCHOOL; A CHESTNUT
WALL-MOUNTED CABINET
EARLY 20TH CENTURY
With three panelled sliding doors, each with a
demi-lune ebonised handle, the slender body
with dove-tail joints
45cm high, 114cm wide, 15.5cm deep

£400-600

198
A PAIR OF TOLEWARE TABLE LAMPS IN
CHARLES X STYLE
EARLY 20TH CENTURY
Of columnar form
63cm high

£600-800



198



199

199
A PAIR OF GREEN
PAINTED WROUGHT
IRON SIDE TABLES
FIRST HALF 20TH
CENTURY
82cm high, 72.5cm wide,
31cm deep

£400-600



199



200

200
A CAST STONE SPANDREL
WITH FLYING ANGEL
LATE 19TH CENTURY, IN THE
MANNER OF BRUCCIANI
Stamped T140
52cm across, 17.5cm deep

£300-500

201
A SPECIMEN WOOD TRIPOD
OCCASIONAL TABLE
CIRCA 1860
The shaped top with radial veneers,
each labelled in French in ink to the
underside, on a turned stem and
outswept hipped legs
69cm high, 55cm diameter

£300-500



201

202
A SATINWOOD AND POLYCHROME PAINTED
HEPPLEWHITE REVIVAL ARMCHAIR
CIRCA 1890, IN THE MANNER OF WRIGHT
AND MANSFIELD
With shield back above the open arms
93cm high

£500-700



202



203

203
 A SET OF THREE
 NEEDLEWORK AND
 VELVET TEXTILE
 PANELS
 SOUTHERN
 EUROPEAN, POSSIBLY
 GREEK OR TURKISH,
 18TH CENTURY
 Each with brown
 velvet within bands
 of handstitched floral
 borders
 each approximately
 129 by 48cm

£200-400



205

204 Y
 A NEW ZEALAND 9CT GOLD
 MOUNTED SPECIMEN WOOD
 WALKING STICK
 EARLY 20TH CENTURY, IN THE
 MANNER OF NORRIE AND
 SEUFFERT
 With chequer and scrollwork marquetry
 in indigenous woods to the handle,
 mounted 9ct band with NZ on fern,
 brass and iron ferrule
 90cm long

£100-200

205
 A GEORGE III MAHOGANY
 CHEST OF DRAWERS
 CIRCA 1780

With arrangement of two short and three
 long drawers
 80cm high, 87cm wide, 50cm deep

£600-800



204



206

206 Y
 A DUTCH OAK, ROSEWOOD AND EBONY CUPBOARD
 LATE 17TH CENTURY AND LATER
 The mitre panel doors enclosing a shelved interior
 199cm high, 191cm wide, 82cm deep

£2,000-3,000



207

207
A PAIR OF BANK OR SICKLE DAGGERS
INDIAN, 18TH/19TH CENTURY
The curved blades damascened with foliage, the handles
each with a lion head pommel
25cm long

£800-1,200

208
A GEORGE IV POLLARD OAK TEAPOY
CIRCA 1830
Of octagonal section the hinged top enclosing a vacant interior,
on a faceted stem and quadrupartite base
74cm high, 46cm wide, 46cm deep

£400-600



208

209
A QUEEN ANNE STYLE EMBROIDERED
SILKWORK AND LINEN FLORAL PANEL
LATE 19TH CENTURY
The whole with handstitched vermicelli ground,
sprays of polychrome floral motifs
approximately 269 by 169cm

Provenance:
Lady Miranda Guinness, Countess of
Iveagh, previously hanging at Castle Fraser,
Aberdeenshire, Scotland.

This panel originally formed part of a group of
hangings commissioned in the late 19th Century
to line the walls of a bedroom at Castle Fraser,
and which were copied from original Queen
Anne textiles

£300-500



209

210
A GEORGE III GOTHIC REVIVAL CARVED OAK LIBRARY ARMCHAIR
EARLY 19TH CENTURY, IN THE MANNER OF JAMES WYATT
In need of upholstery, of tub shape, the lancet back with Gothic
tracery incorporating the arms, above square section legs with
further tracery spandrels
100cm high

£4,000-6,000



210



211

211
TWO EGYPTIAN STYLE CARVED AND POLYCHROME WOOD SEATED FIGURES
20TH CENTURY, IN THE LATE PERIOD STYLE
Now set on modern brass bases
taller figure 15cm high

£100-200

212
A CARVED SANDSTONE TABLET OR FRIEZE SECTION
NORTH INDIAN, LATE 17TH/EARLY 18TH CENTURY

The pinkish grey stone with central raised flowerhead within twin leaf banding, columns to ends
99cm wide, 57cm high, 7cm thick

£600-1,000



212

213
A LIMED TEAK REFECTORY TABLE IN ANGLO-INDIAN TASTE
INDIAN, SECOND HALF 20TH CENTURY

The rectangular top with gadrooned edge above carved supports with elephants and foliate scrolls
76cm high, 237cm long, 111cm deep

£1,000-2,000



213

214
TWO CHROME METAL LIGHTS
MID-20TH CENTURY;
The hanging light in the style of Max Sauze,
20cm high, the other, 34.5cm high

£300-500



214



215

215
ÉTIENNE VILOTTE FOR CIBOURE POTTERY- A 'RED FIGURE' LAMP BASE
EARLY 20TH CENTURY
With frieze of dancing figures and musicians, later insert lid with empty fitment for light,
stamped factory mark
23.5cm high

£200-300



216

216
AN OAK REFECTORY TABLE
EARLY 20TH CENTURY,
POSSIBLY COTSWOLD SCHOOL
The rectangular top above
chamfered square section
supports and bipedal feet
76cm high, 131cm wide,
91cm deep

£300-500



217

217
A PAIR OF GILT BRASS HALL OR PORCH PENDANT LANTERNS
EARLY 20TH CENTURY
Of hexagonal form, arched panels with opaque glass glazing
38cm high, 19cm wide

£300-500

218
A WILLIAM IV MAHOGANY OCTAGONAL
OCCASIONAL TABLE
CIRCA 1835
73cm high, 53cm wide, 53cm deep

£300-500



218

219
A PAIR OF VICTORIAN CARVED WALNUT
ARMCHAIRS IN FRENCH TASTE
CIRCA 1860
In need of reupholstery, each show-frame
with 'spoon' back above the open arms and
legs
99cm high

£800-1,200



219

220
AN ANATOLIAN PRAYER RUG
POSSIBLY GHIORDES
approximately 208cm x 140cm

£200-300

220



221
A CAUCASIAN SOUMAK
Possibly Shirvan
approximately 215cm long, 141cm wide

£500-700

221





222

222
A KERMAN CARPET
approximately 350cm x288cm

£400-600



223

223
AN EARLY VICTORIAN SCOTTISH FIVE DIAL SLATE
HORIZONTAL SUNDIAL
BY RICARDUS MELVILLE, GLASGOW, DATED 1845
Of rectangular form, variously inscribed, two subsidiary
dials for New Zealand and New York, signed RICARDUS
MELVILLE FECIT 1845
base 46 by 30 cm, height approx 20cm

Richard Melville, a travelling Ulster dial-maker, specialised
in multi dial horizontal dials such as this. His work is found
signed variously as Richard, Ricardus, Melville and Melvin.
A dial from the same year with similar subsidiary locations is
held in the collections of the National Museums Scotland.

£300-500

224
A RARE PAINTED PINE DOG GATE
PROBABLY 18TH CENTURY
In 'Chinese Chippendale' taste, the fretwork gate with remnants of old
ironmongery, previously blue painted
90cm high, 91cm wide overall

Provenance:
Arabesque Antiques

For a comparable example of a dog gate- please see these rooms, Drew
Pritchard: The Collection, 05 Mar 2024, lot 279 (sold £1550 hammer).

So-called 'dog gates' were fitted to the staircase newel post, either at
the bottom to prevent dogs coming up the stairs, or at the top to stop
children falling down.

The earliest recorded 'dog gate' is a Jacobean oak example still at
Haddon Hall, Derbyshire (Gervase Jackson Stops, *The English Country
House, London, 1985, pages 64-5*). Another, of vernacular form, dating
from the Charles II period, with an oak frame and pine wriggle work
splats, is likely to have matched the fretted sides of the staircase to
which it was once attached (Christie's London, *Interiors, 26 June 2016,*
lot 370). The 'Chinese paling' fretwork follows patterns popularised by
the publications of architects and cabinetmakers of the period, notably
Thomas Chippendale's *The Gentleman & Cabinet-Maker's Directory of
1754* and Sir William Chambers' *Designs of Chinese Buildings, Furniture,*
etc. of 1757. Another related 'paling' example remains visible behind a
staircase window in Rivers Street, Bath.

£400-600



224



225



225
A MATCHED PAIR OF GARDEN
PLANTERS
EARLY 20TH CENTURY, POSSIBLY
COMPTON POTTERY
One in terracotta colourway, the other
to simulate limestone, with mask and
swag decoration to the exterior
30cm high, 62cm wide, 40cm deep

£400-600



226

226
A TERRACOTTA BUST OF PERSEPHONE
20TH CENTURY
57cm high, 49cm wide across the shoulders

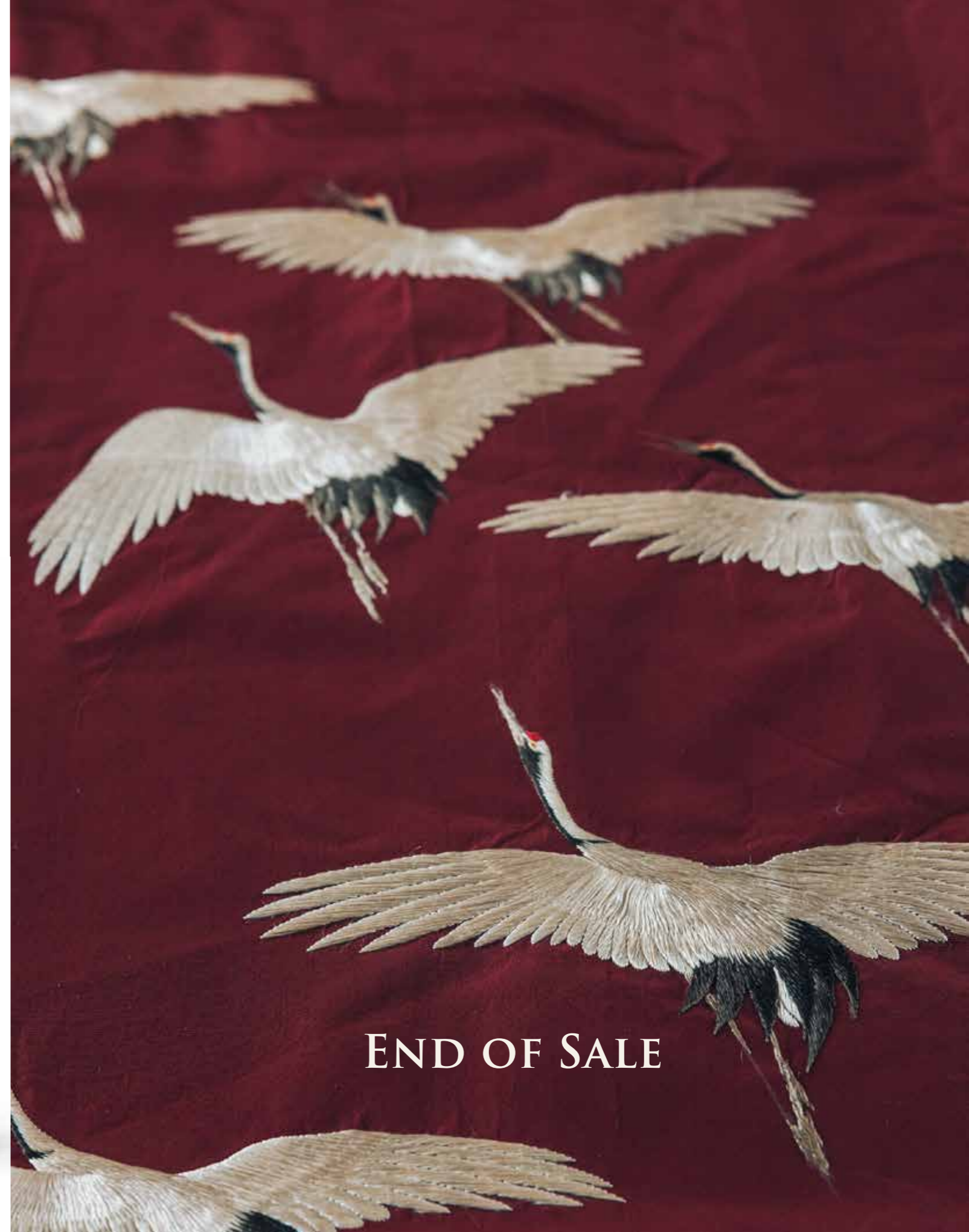
£200-300

227
A PAIR OF VENETIAN CAST STONE LIONS
LATE 19TH CENTURY
Modelled opposing, each modelled seated on their haunches
and holding a shield under a raised forepaw
each 85cm high

£1,000-1,500



227



END OF SALE

COMING UP AT DREWEATTS & FORUM AUCTIONS

10 December | Dreweatts
Fine Wine, Champagne, Vintage Port and Spirits

12 December | Dreweatts
Art Live

12 December | Forum Auctions
Prints and Multiples

7 January | Dreweatts
Guy Tobin: 'For the Love of Objects!'

8 & 9 January | Dreweatts
Interiors

16 January | Dreweatts
Jewellery, Silver and Watches

22 January | Dreweatts
Single Owner Sale

27 January | Dreweatts
A Fine Selection of Australian Wines

28 January | Dreweatts
Fine Wine, Champagne, Vintage Port and Spirits

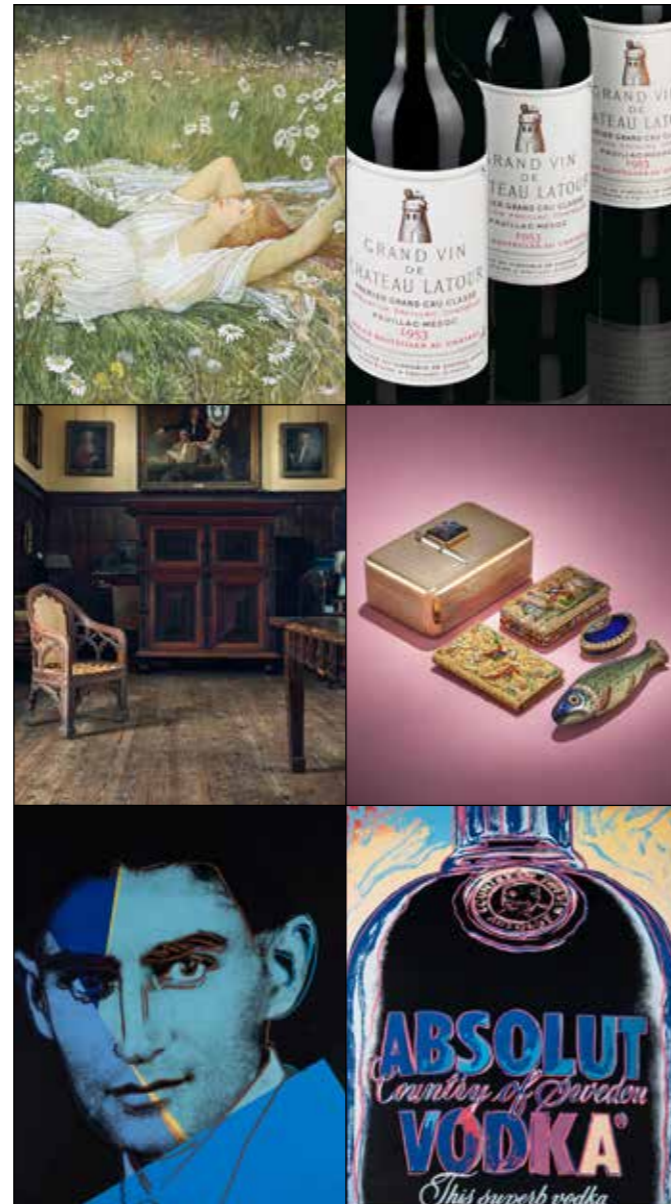
30 January | Forum Auctions
Fine Books, Manuscripts and Works on Paper

6 February | Dreweatts
Art & Interiors

12 February | Dreweatts
Old Master, British and European Art

19 February | Dreweatts
Single Owner Sale

20 February | Dreweatts
Fine Silver and Objects of Vertu



NOW INVITING ENTRIES

If you have an item you would like valued for sale at auction, we would be delighted to provide you with a free, no obligation estimate. Contact us to arrange an in-person appointment or visit our website to see how to submit the information online.

DREWEATTS
EST. 1759

dreweatts.com
info@dreweatts.com
NEWBURY
01635 553 553
LONDON
020 7839 8880

forumauctions.co.uk
info@forumauctions.co.uk
LONDON
020 7871 2640

 **Forum**
Auctions

Please see Conditions of Business and Conditions of Sale on the following pages.

Dreweatts & Dreweatts 1759 are trading names of Dreweatts 1759 Ltd. Dreweatts 1759 Ltd is registered in England, company number: 10758982, registered office: C/O Bishop Fleming LLP, 10 Temple Back, Bristol, BS1 6FL.

IMPORTANT NOTICES

BUYING AT DREWEATTS

There are several ways you can bid at a Dreweatts auction; in person, by leaving a commission or absentee bid, on the telephone where available and live via the internet – please make arrangements before the sale. THIS NOTICE APPLIES ONLY TO A PERSON WHO WISHES TO BID IN PERSON, OR BY LEAVING A COMMISSION OR ABSENTEE BID, AT A DREWEATTS PUBLIC AUCTION. For bidding at an online auction or for online bidding at a public auction please see our Online Auction Terms published on our website at www.dreweatts.com.

BIDDING IN PERSON

If intending to buy you are required to register your name and details at reception prior to the commencement of the auction. You will be required to provide a proof of identity and address to register for bidding. You will then be allocated a bidding number, which you use when bidding for an item.

COMMISSION BIDS

Dreweatts will execute bids on your behalf if you are unable to attend the sale. Commission or absentee bids are accepted either directly at reception, or can be sent by post, fax, email, telephone or via the website: www.dreweatts.com.

Dreweatts will add these bids to the auctioneers' sale book and will undertake to purchase the lots on your behalf as cheaply as allowed by other bids and reserves. If two buyers submit identical commission bids Dreweatts may prefer the first bid received.

Dreweatts does not accept liability for failing to execute commission bids, or for any errors or omissions.

CONDITION

Bidders must satisfy themselves as to the condition of each lot. Condition reports are available on request – see the Conditions of Business at the back of this catalogue forming part of these Auction Terms and Conditions for more information regarding condition reports. Requests for condition reports must be submitted by 4pm on the day prior to the auction; condition reports may be available alongside the lot description on the online catalogue at: www.dreweatts.com.

COMMISSION CHARGES

All purchases are subject to a buyer's premium, which is charged per lot at 26% of the hammer price (31.2% including VAT) up to and including £20,000, 25% (30% including VAT) of the hammer price from £20,001 up to and including £500,000, 20% (24% including VAT) of the hammer price from £500,001 up to and including £1,000,000 and 12.5% of the hammer price (15% including VAT) in excess of £1,000,000. A theta symbol (θ) indicates that the lot is a zero rated item and therefore not subject to VAT on the buyer's premium. This applies to bound books (manuscripts and printed), unframed maps and albums. In the event the lot has a dagger (†) beside the lot number in the catalogue, this indicates that the lot is owned by an entity or company required to pay VAT (generally not an Antique Dealer, as they operate under a dealers margin scheme). VAT is payable at 20% on the Hammer Price. Lots marked with a double dagger (‡) (presently a reduced rate of 5%) or Ω (presently at standard rate of 20%) have been imported from outside the UK under Temporary Admission regime and therefore the buyer must pay the import VAT at the appropriate rate on the duty inclusive hammer price.

PAYMENT

Payment will be accepted, if you are a successful bidder, by debit card issued in the name of the Buyer by a UK bank and registered to a UK billing address; by all major UK issued credit cards issued in the name

of the Buyer and registered to a UK billing address with the exception of Diners Club; by bank transfer direct into our bank account, Bank Details: NatWest, 30 Market Place, Newbury, Berkshire RG14 5AG. Account Name: Dreweatts 1759 Ltd. A/C: 62412949, Sort Code: 60-15-07, BIC: NWBKGB2L, IBAN: GB21NWBK60150762412949. The name of the bank account holder should match the name of the buyer. First time buyers who are not present at the saleroom are requested to pay by bank transfer.

CITES REGULATIONS

Please note that lots marked with the symbol (Y) in this catalogue may be subject to CITES Regulations when exported. Relevant CITES Regulations may be found at www.gov.uk/guidance/cites-imports-and-exports.

COLLECTIONS, SHIPPING AND STORAGE

Before being able to collect your purchases you are required to pay the hammer price, plus the applicable commissions, and obtain a receipt acknowledging payment. Collection of the purchased lots is at the purchaser's risk and expense and whilst Dreweatts do not provide packing and despatch service we can suggest some carriers. Unless otherwise stated below, purchases are available for collection from Dreweatts Donnington Priory salerooms from Monday to Friday (9am-5pm) by appointment only. If you wish to have items shipped to you, please see our list of suggested shippers on our website.

Garden items, smaller objects and small pictures: items will remain at Donnington Priory, but please check when booking your collection.

Note: Buyers of large garden items and statuary should ensure they/their carriers are able to remove the items themselves. Please call Dreweatts in advance of any collection for further advice.

Large items (furniture, carpets, rugs, mirrors and large objects): items will be removed to commercial storage at Sackville-West Moving & Storing (Andover SP10 3SA) on Friday 10 January and will be available for collection from Monday 13 January onwards. Items removed to Sackville-West will be stored free of charge until Sunday 19 January. From Monday 20 January, items will be subject to a transfer fee of £20 (plus VAT) and a storage charge of £3 (plus VAT) per lot per part or full day thereafter. These charges will be the sole liability of the purchaser and will be billed directly to them by Sackville-West Moving & Storing. Sackville-West Moving & Storing will provide an additional week's free storage and waive the transfer fee if they are instructed by the purchaser to deliver to them. On payment of all sales and storage costs, items will be available for collection by appointment from Sackville-West Moving & Storing (tel: + 44 (0) 2080 909988; email: office@sackvillewest.co.uk).

FURTHER INFORMATION

The colours printed in this catalogue are not necessarily a true reflection of the actual item. All weights and measures given in the catalogue should be regarded as approximate.

VALUATION SERVICES

Dreweatts provides a range of confidential and professional valuation services to private clients, solicitors, executors, estate managers, trustees and other professional partners. These services include auction valuations, insurance valuations, probate valuations, private treaty valuations, valuations for family division or for tax purposes. For more information, please see our website: www.dreweatts.com.

For directions to Donnington Priory, please see our website: www.dreweatts.com.

Parking is available at Donnington Priory in two car parks on either side of the saleroom.



DREWEATTS

EST. 1759