



SIBYL COLEFAX

&

JOHN FOWLER

A COLLECTION FROM THE PIMLICO ROAD SHOWROOM  
AND A PRIVATE LONDON HOUSE

THURSDAY 20 FEBRUARY 2025 | NEWBURY

DREWEATTS

EST. 1759

SIBYL COLEFAX

&

JOHN FOWLER

A COLLECTION FROM THE PIMLICO ROAD SHOWROOM  
AND A PRIVATE LONDON HOUSE





SIBYL COLEFAX

&

JOHN FOWLER

A COLLECTION FROM THE PIMLICO ROAD SHOWROOM  
AND A PRIVATE LONDON HOUSE

THURSDAY 20 FEBRUARY 2025 | 10.30AM | NEWBURY

SIBYL COLEFAX & JOHN FOWLER | LOTS 1-230E  
A PRIVATE LONDON HOUSE | LOTS 231-308

VIEWING IN NEWBURY

Friday 14 February: 10am–4pm  
Sunday 16 February: 10am–3pm  
Monday 17 February: 10am–4pm  
Tuesday 18 February: 10am–4pm  
Wednesday 19 February: 10am–4pm  
Thursday 20 February: 9am–12pm

ENQUIRIES & CONDITION REPORTS

[housesales@dreweatts.com](mailto:housesales@dreweatts.com)

NEWBURY  
Donnington Priory, RG14 2JE  
+44 (0) 1635 553 553

LONDON  
16-17 Pall Mall, SW1Y 5LU  
+44 (0) 20 7839 8880

[info@dreweatts.com](mailto:info@dreweatts.com)

[dreweatts.com](http://dreweatts.com)

Front Cover: Ebury in Pink available through Sibyl Colefax & John Fowler

DREWEATTS

EST. 1759

# A GUIDE FOR BUYERS

## REGISTRATION AND BIDDING

We advise bidders to register at least 48 hours in advance of the auction as we will need to complete Know Your Client checks on all registrants. We allow commission (or absentee bids), telephone bids, live online bidding, and in person bidding. More information is available in our Terms of Sale at the back of this catalogue, and on our website.

## BUYER'S PREMIUM

26% of hammer price up to £20,000 (31.2% including VAT), plus

25% of hammer price from £20,001 up to £500,000 (30% including VAT), plus

20% of hammer price from £500,001 up to £1,000,000 (24% including VAT), plus

12.5% of hammer price in excess of £1,000,000 (15% including VAT)

## ADDITIONAL CHARGES AND SYMBOLS

λ - Indicates that this lot may be subject to Artist's Resale Right (Droit de Suite) royalty charges.

Y - Indicates that this lot may be subject to CITES regulations when exported.

† - Indicates that VAT is payable by the purchaser at the standard rate of 20% on the hammer price as well as being charged on the buyer's premium.

θ - Indicates that the lot is a zero rated item and therefore subject to buyer's premium of 26% exclusive of VAT (0% VAT).

‡ - Indicates that the lot is being sold whilst subject to temporary importation and that import VAT at the reduced rate (currently 5%) calculated on the hammer price is due.

Ω - Indicates that the lot has been imported from outside the UK and that import VAT at the standard rate (currently 20%) calculated on the hammer price (inclusive of any applicable duty) is due.

β - Indicates that the lot is offered in Bond. This applies to wine. Bidding will be at duty paid prices other than for those lots marked 'IN BOND/β'.

Note, the import VAT charged for lots with symbols ‡ or Ω can be refunded if Dreweatts is instructed to re-export the property or if the VAT liability is transferred to another Temporary Admission authorisation.

## PAYMENT

If you are successful, you will receive an invoice to your registered email address, which will include detailed payment and collection information. If you wish to see this in advance, please visit our website. Items must be paid for in full and Know Your Client checks must be complete before we can release any purchases; first time buyers may also be subject to restrictions on the methods of payment we can accept. Please confirm this with the saleroom prior to collection.

## COLLECTIONS, SHIPPING AND STORAGE

Unless otherwise stated below, purchases are available for collection from Dreweatts Donnington Priory salerooms from Monday to Friday (9am-5pm) by appointment only. If you wish to have items shipped to you, please see our list of suggested shippers on our website.

**Garden items, smaller objects and small pictures:** items will remain at Donnington Priory, but please check when booking your collection. **Note:** Buyers of large garden items and statuary should ensure they/their carriers are able to remove the items themselves. Please call Dreweatts in advance of any collection for further advice.

**Large items (furniture, carpets, rugs, mirrors, large objects):** items will be removed to commercial storage at Sackville-West Moving & Storing (Andover SP10 3SA) on Friday 21 February and will be available for collection from Monday 24 February onwards. Items removed to Sackville-West will be stored free of charge until Sunday 2 March. From Monday 3 March, items will be subject to a transfer fee of £20 (plus VAT) and a storage charge of £3 (plus VAT) per lot per part or full day thereafter. These charges will be the sole liability of the purchaser and will be billed directly to them by Sackville-West Moving & Storing. Sackville-West Moving & Storing will provide an additional week's free storage and waive the transfer fee if they are instructed by the purchaser to deliver to them. On payment of all sales and storage costs, items will be available for collection by appointment from Sackville-West Moving & Storing (tel: +44 (0) 2080 909988; email: office@sackvillewest.co.uk).

## CONDITIONS OF SALE

Any registration to bid is subject to acceptance of our Auction Terms and Conditions and Privacy Policy. Both are available on our website.

## CONDITION OF ITEMS

Buyers must satisfy themselves to the condition of any item prior to bidding. Detailed condition reports and additional images are available upon request.

## EXPORT OF ITEMS

Prospective buyers are advised to familiarise themselves with the lot symbols and export and import restrictions applicable to a lot prior to bidding. It is the buyer's responsibility to obtain all permits and licences necessary to export lots lawfully from the UK and import into their country. We will not be able to cancel your purchase if your lot may not be exported, imported or it is seized for any reason by a government authority. We are happy to assist with the submission of necessary applications on behalf of our buyers, but we will charge for this service only to cover the costs of our time.

## GLOSSARY OF TERMS

Where relevant, for example Picture auctions or Clocks auctions, a glossary of cataloguing terms will be available in the printed catalogues as well as on our website.

# SPECIALISTS FOR THIS AUCTION



**Joe Robinson**  
Head of House Sales and Private Collections (Head of Sale)



**Peter Horwood**  
Senior Specialist, House Sales and Private Collections



**Arabella Methuen**  
Administrator



**Silas Currie Leigh-Wood**  
Sculpture & Works of Art



**Ashley Matthews MRICS**  
Furniture, Clocks, & Decorative Art



**Geoffrey Stafford Charles MRICS**  
Ceramics & Glass



**Francesca Walsh**  
Modern and Contemporary Art



**Lucy Darlington MRICS**  
Old Master Pictures



**Brandon Lindberg**  
Old Master Pictures









1  
A BRASS MOUNTED BLACK TOLE COLUMN  
LAMP OF LARGE SIZE  
FRENCH, MID 19TH CENTURY  
Labelled 'LAMPE SILVANT'; mounted and wired for  
electricity  
90cm high overall

Together with another smaller brown painted column  
lamp, probably early 20th century, mounted and  
wired for electricity, 73cm high overall

£300-500



1



2

2Y  
A CARVED EBONY STOOL  
CEYLONESE, SECOND HALF 19TH CENTURY  
With striped cotton upholstered drop in seat  
49.5cm high, 56cm wide, 48cm deep

£400-600



3

3  
A BLACK-LACQUERED METAL CONSOLE TABLE WITH TRAVERTINE TOP  
MODERN  
80.5cm high, 120cm wide, 50cm deep

£800-1,200





**4**  
**A FELT COLLAGE AND EMBROIDERY PICTURE OF A COURTING COUPLE**  
 ENGLISH, LATE 18TH CENTURY  
 42cm high, 33cm wide

**Provenance:**  
 With John Fowler (1906-1977) at the Hunting Lodge, Odiham, Hampshire,  
 until bequeathed to Imogen Taylor

£150-250

4



5

**5**  
**TWO CHROME DESK LAMPS**  
 FIRST HALF 20TH CENTURY  
 41cm high overall, and 31cm high overall respectively

Together with a chrome hexagonal lamp of large  
 size, modern, 91cm high

£300-500



5



**6**  
**A BESPOKE OAK DRAW-LEAF TABLE**  
 BY SIBYL COLEFAX & JOHN FOWLER  
 The crossbanded extending top on a central column and  
 spreading circular base, the top closes to become a square  
 75cm high, 160cm wide fully extended, 90cm square

The design of this table is similar to the Sibyl Colefax &  
 John Fowler 'Lancaster' table

£600-800

6

**7**  
**A PAIR OF GLASS LAMPS**  
 MODERN  
 With fabric shades  
 64cm high overall

£300-500



7

**8**  
**A WALNUT AND GREY MARBLE SIDE TABLE**  
 SWEDISH, MID 20TH CENTURY  
 With a classical Greek key and swag carved frieze, fitted with three drawers  
 76cm high, 115.5cm wide, 52.5cm deep

£500-800



8

**9**  
**A REGENCY BRASS-MOUNTED DARK  
 BRONZE PAINTED SOFA**  
 EARLY 19TH CENTURY  
 With striped cotton upholstered cushions and  
 calico upholstery  
 98cm high, 232cm wide, 73cm deep

£700-1,000



9





**10**  
AFTER CASANOVA AND VANNI  
A SET OF APPROXIMATELY THIRTY-NINE  
UNFRAMED COPPERPLATE ENGRAVINGS  
FOR THE 'DELLE ANTICHITA DI ERCOLANO,  
TOMO OTTAVO' PUBLISHED IN 1792  
Each 51 x 39cm (20 x 15¼ in.) (39)

£300-500



10 (part lot)



11



**11**  
A PAIR OF GRAINED OAK GOTHIC  
SIDE CHAIRS  
ENGLISH, MID 19TH CENTURY  
Each with a Sibyl Colefax & John Fowler  
'Strawberry Leaf' cotton upholstered squab  
cushion over cane seat  
84cm high, 46cm wide, 46cm deep

'Strawberry Leaf,' a Georgian pattern thought  
to date from about 1760 was found by John  
Fowler, who gave the original fabric to the  
V&A Museum.

£500-800

**12**  
A PAIR OF FAUX PORPHYRY  
AND BLACK PAINTED  
FLOOR STANDING  
WOODEN OBELISKS OF  
LARGE SIZE  
MODERN  
181cm high, 40cm square

£1,000-2,000



12





13

13  
A PAINTED WOOD AND WIRE BIRDCAGE  
IN THE FORM OF A PAVILION  
20TH CENTURY  
67cm high, 60.5cm wide, 46cm deep

£200-300



14

14  
A PAINTED HARDWOOD SERPENTINE SIDE TABLE  
LATE 20TH CENTURY, IN THE LOUIS XV STYLE  
With a black simulated marble top  
75cm high, 91.5cm wide, 39cm deep

£250-400

15  
A SET OF EIGHT BLUE AND WHITE CHECK COTTON  
UPHOLSTERED MAHOGANY DINING CHAIRS  
LATE 20TH CENTURY  
102.5cm high, 53cm wide, 57cm deep

£400-600



15

14

16  
AN OAK DISPLAY CABINET  
DUTCH, LATE 18TH/EARLY  
19TH CENTURY  
The arched top surmounted  
by an urn draped in oak  
leaves above a pair of glazed  
doors with a pair of panelled  
doors below  
274.5cm high, 161.5cm wide,  
32cm deep

£2,000-4,000



16





17

17  
A PAIR OF BLUE AND WHITE PAINTED  
WALL BRACKETS  
BY SIBYL COLEFAX & JOHN FOWLER  
With ribbon decorated frieze  
29cm high, 28cm wide, 22cm deep

£300-500



18  
A GEORGE III BRASS-BOUND MAHOGANY COOPERED WINE  
COOLER ON STAND  
LATE 18TH CENTURY  
With tin liner  
64.5cm high, 51.5cm wide, 37.5cm deep

£200-300



18

19  
AN OAK STOOL  
EARLY 20TH CENTURY, IN THE MANNER OF SIR ROBERT LORIMER  
The top now inset with two black slates  
45.5cm high, 160cm long, 41cm deep

£300-500



19



21

20  
A GILTWOOD MIRROR  
20TH CENTURY  
With reeded frame  
173cm high, 83cm wide, 4cm deep

£300-500



20

21  
A DELFT BLUE AND WHITE VASE AND  
COVER  
DUTCH, 18TH CENTURY  
With later mounts, wired as a lamp  
69cm high overall

£700-1,000



22

22  
A FRUITWOOD, WALNUT AND MARQUETRY  
INLAID SIDE TABLE  
ITALIAN, LATE 18TH CENTURY  
With a drawer  
75cm high, 107cm wide, 54cm deep

£1,000-1,500





23

23  
 AN OLIVE GREEN CRACKLE-GLAZED VASE LAMP  
 FRENCH, LATE 20TH CENTURY  
 70cm high overall

Together with a sang de boeuf glaze vase lamp, modern,  
 84cm high overall

And a copper coloured glass vase lamp of large size, modern,  
 91cm high overall

£400-600



24

24  
 A CHINESE IMARI PLATE  
 17TH CENTURY  
 35cm diameter

£200-300



25

25  
 A PINE D-SHAPED SIDE TABLE  
 ENGLISH, MID 19TH CENTURY  
 With a single drawer  
 75cm high, 107cm wide, 50.5cm deep

£150-250



26

26  
A LILAC, VIOLET AND WHITE GLASS VASE LAMP  
MODERN  
61.5cm high overall

Together with a faux porphyry lamp, modern,  
60cm high overall

£150-250



27  
A PAIR OF STEEL OCCASIONAL TABLES  
MODERN  
Each with circular tops  
70cm high, 35cm diameter

£250-400



27

28  
A SET OF THREE BLUE VELVET UPHOLSTERED MAHOGANY  
EASY ARMCHAIRS  
LATE 20TH CENTURY  
The front legs with metal sabots  
93cm high, 72cm wide, 99cm deep

Together with three off-white silk cushions  
23cm high, 45cm wide

£1,000-1,500



28

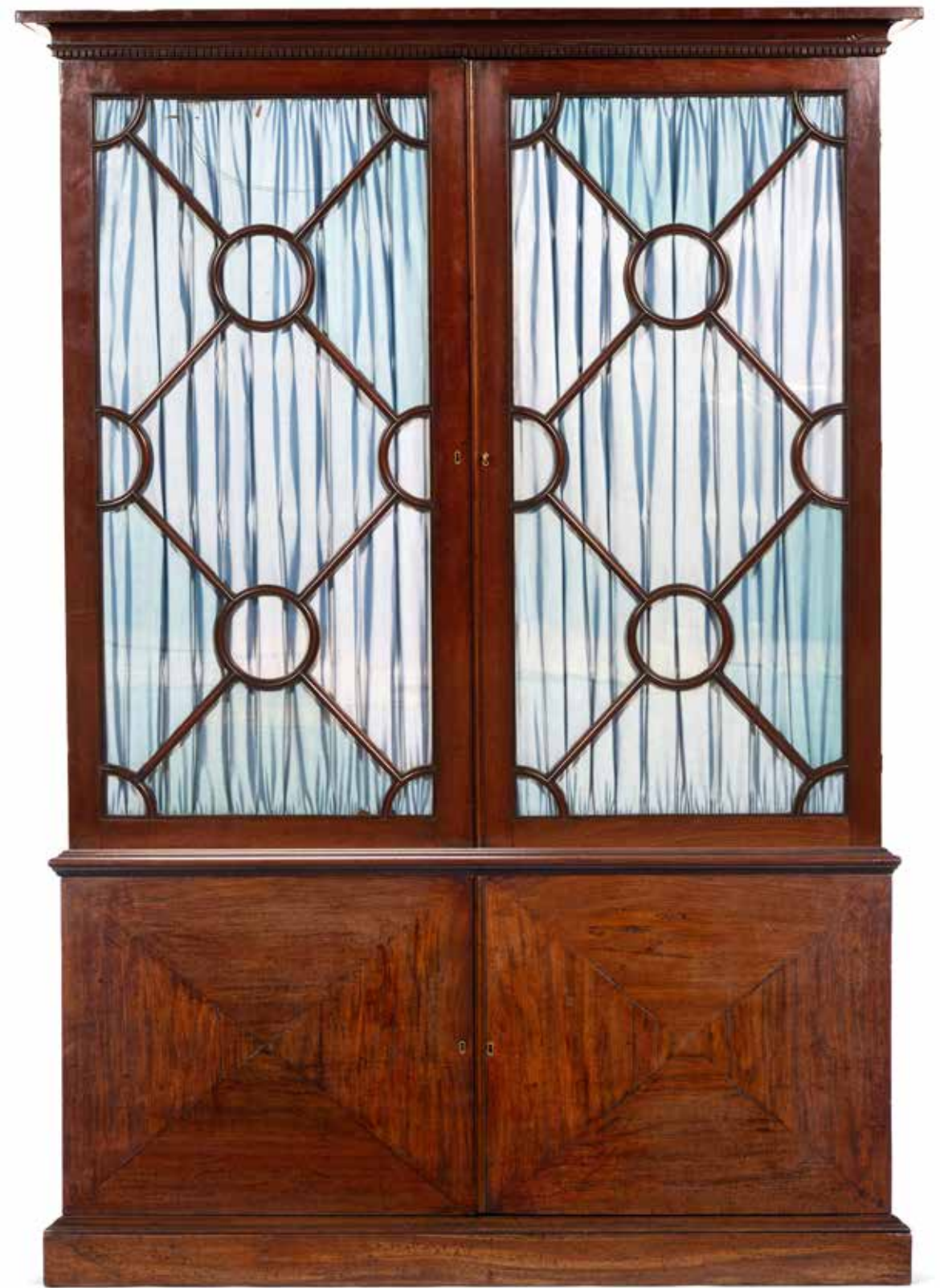
29  
AFTER CASANOVA AND VANNI  
A SET OF TWENTY FIVE FRAMED COPPERPLATE  
ENGRAVINGS FOR THE 'DELLE ANTICHTA DI ERCOLA,  
TOMO OTTAVO' PUBLISHED IN 1792v  
Engraving  
Each 32 x 22.5cm  
(12½ x 8¾ in.) (25)

£2,000-3,000



29 (part lot)





30

**30**  
**A GEORGE III MAHOGANY BOOKCASE**  
18TH CENTURY AND LATER

With two replaced glazed doors hung with fabric above two panelled doors enclosing adjustable shelves  
232.5cm high, 160cm wide, 41cm deep

£2,000-4,000





31 (part lot)

**31**  
A BRASS MOUNTED AND BLUE GLASS OIL LAMP  
FRENCH, LATE 19TH CENTURY  
Now mounted and fitted as a lamp  
approximately 60cm high overall

Together with a pair of floral and white painted metal 'Bilston' style lamps, late 20th century, lacking shades, 43cm high including fitment (no shade)

£150-250

**32**  
AN EBONISED STOOL  
ENGLISH, 19TH CENTURY  
With a Manuel Canovas 'Frida' fabric upholstered drop-in seat, the base probably originally a stand for a chest  
50cm high, 99cm wide, 57cm deep

£400-600



32

**33**  
A SET OF SIX EBONISED CHAIRS  
MODERN  
Each with burnt orange velvet upholstered seats  
Two chairs of a slightly larger scale, 96cm high, 81cm wide, 57cm deep;  
Four chairs, 92cm high, 60cm wide, 55cm deep

£1,000-2,000



33



35 (part lot)



34

**34**  
AFTER CORNELIS BORSTEEGH  
A SET OF NINE PRINTS FROM 'PENELOPE'S WEB';  
DEPICTING MISCELLANEOUS SUBJECT MATTER  
Coloured engravings  
Each 20.5 x 24cm (8 x 9 1/4 in.) (9)

£600-900

**35**  
A PAIR OF ROSA BERNAL 'RAMUS'  
FABRIC CURTAINS  
BY SIBYL COLEFAX & JOHN FOWLER  
320cm long, 135cm wide

Together with two Roman blinds in matching fabric,  
210cm long, 100cm wide

£700-1,000

**36**  
A CREAM, GREEN AND BLUE PAINTED  
SERPENTINE SOFA  
FRENCH, LATE 19TH CENTURY, IN THE LOUIS  
XV STYLE  
With Sibyl Colefax & John Fowler 'Tilney stripe'  
fabric upholstery  
99cm high, 212cm wide, 87.5cm deep

£1,200-1,800



36





37  
A FAUX MARBLE TOLE COLUMN LAMP  
FRENCH, 19TH CENTURY  
72cm high overall

Together with two painted wooden column lamps  
Modern  
One white and gilt, the other black and gilt  
The white 71cm high overall, the black 68cm high overall

£300-500



37 (part lot)



38

38 Y  
A ROSEWOOD X-FRAME STOOL  
ENGLISH, MID 19TH CENTURY  
Upholstered in Colefax and Fowler  
'Malabar' fabric  
34cm high, 75cm wide, 58cm deep

£300-500

39  
A GEORGE III MAHOGANY  
ARCHITECT'S TABLE  
LATE 18TH CENTURY  
With double ratcheted hinged  
leather lined top above a drawer,  
with slides to the sides  
72cm high, 90cm wide, 69cm deep

£600-1,000



39





40



40



**40**  
A PAIR OF FOLIATE CARVED GILTWOOD WALL BRACKETS  
20TH CENTURY  
each 16cm high, 36cm wide, 24cm deep

Together with another non-gilded pair, 20th century, each 16cm high, 36cm wide, 24cm deep

£200-300

**41**  
A CHINOISERIE DECALCAMANIA  
GLASS VASE  
POSSIBLY 19TH CENTURY  
Mounted and wired as a lamp  
58cm high overall



41



41



Together with a papier mache vase, by Jennens and Bettridge, mid 19th century, 72cm high overall

And a further green and gilt chinoiserie decorated Decalmania glass vase, 19th Century, 26cm high

£400-600

**43**  
A BRASS THREE BRANCH BOUILLLOTTE LAMP  
FRENCH, SECOND HALF 19TH CENTURY, IN THE DIRECTOIRE STYLE  
With green painted tole shade, fitted for electricity  
70cm high

£300-500



43



44

**44**  
A MAHOGANY LIBRARY CHAIR  
ENGLISH, MID 19TH CENTURY  
Upholstered in buttoned red leather, one arm with a mounted hole for a reading slope now lacking  
102cm high, 71cm wide, 80cm deep

£500-800



42



**42**  
A PAIR OF 'CHIAVARINE' BEECH  
LADDER BACK ARMCHAIRS  
ITALIAN, MID 20TH CENTURY, IN  
THE MANNER OF PAOLO BUFFA  
Each with rush seat, stamped with a  
makers mark  
83cm high, 60cm wide, 60cm deep

£500-800

**45**  
A LOUIS XVI BRASS-MOUNTED  
MAHOGANY TRIC TRAC TABLE  
LATE 18TH CENTURY  
With reversible removable top revealing  
an inlaid backgammon board  
76.5cm high, 107.5cm wide,  
56.5cm deep

£1,000-1,500



45





47 (part lot)

**48**  
A GEORGE III WALNUT CROSSBANDED  
OAK COFFER  
LATE 18TH CENTURY  
With hinged top and two drawers  
75cm high, 117cm wide, 58.5cm deep

£500-800



48



46



**46**  
FOUR GLAZED POTTERY LAMPS  
MODERN

One pair green, the other yellow  
The yellow pair 75cm high overall, the green pair 70cm high overall

£500-800

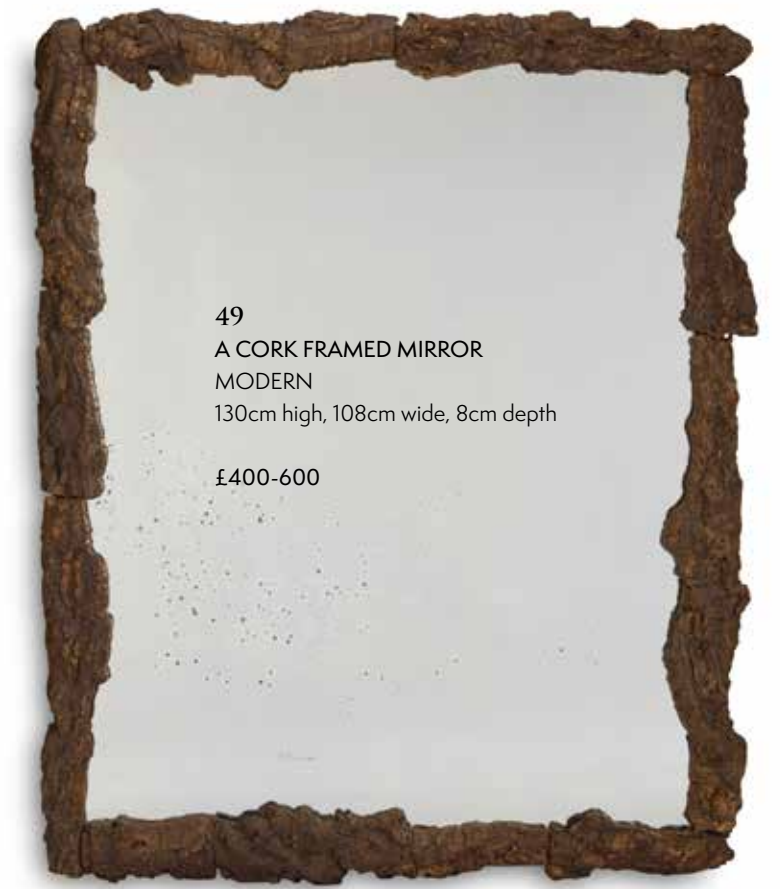
**47**  
A WILLIAM IV GRAINED BEECH BOBBIN-TURNED OPEN  
ARMCHAIR  
EARLY 19TH CENTURY  
Upholstered in green velvet  
118cm high, 64cm wide, 83cm deep

Together with an oak bobbin-turned occasional table of small size, 19th  
century and later, 46cm high, 42cm wide, 32cm deep

\*Cushion present in image on page 30 not included

£700-1,000





50

49

**50**  
 A DELFT BLUE AND WHITE VASE IN THE  
 TRANSITIONAL STYLE  
 POSSIBLY DUTCH OR NORTH GERMAN, 18TH CENTURY  
 Mounted and wired as a lamp  
 62cm high overall  
 £600-1,000

**49**  
 A CORK FRAMED MIRROR  
 MODERN  
 130cm high, 108cm wide, 8cm depth  
 £400-600



51

**51**  
 A BRASS MOUNTED GILT AND BLACK LACQUER COFFER  
 JAPANESE, LATE 18TH/EARLY 19TH CENTURY, INCORPORATING  
 17TH CENTURY JAPANESE LACQUER PANELS  
 With hinged top and handles to the sides, on later block feet  
 60.5cm high, 125cm wide, 58cm deep  
 £2,500-4,000





52

**52**  
**A PAIR OF BRASS MOUNTED TOLE LAMPS**  
 FRENCH, 19TH CENTURY  
 Now mounted and fitted  
 for electricity  
 86cm high overall

£600-1,000



53

**54**  
**A BEIDERMEIER MAHOGANY**  
**CHEST OF DRAWERS**  
 FIRST HALF 19TH CENTURY  
 With two drawers  
 75cm high, 68cm wide, 46cm deep

Together with a North Italian fruitwood  
 side table, early 19th century, with a  
 frieze drawer above an undertier,  
 77.5cm high, 66cm wide, 47.5cm deep

£400-600



54

**53**  
**A GEORGE III BRASS BOUND**  
**MAHOGANY CAMPAIGN TRIPOD TABLE**  
 LATE 18TH CENTURY

The adjustable circular veneered top on an  
 adjustable extending support and folding  
 cabriole legs, the top possibly later  
 55cm high, 77cm diameter

£400-600



56

**56**  
**A GILTWOOD AND GREEN PAINTED CENTRE TABLE**  
 ITALIAN, 19TH CENTURY  
 The later marble top above a pierced frieze with lion masks, draped  
 with swags on tapering legs joined by cross stretchers  
 76cm high, 112cm wide, 65cm deep

£700-1,000

**55**  
**A PAIR OF GREY AND CREAM PAINTED CARVED**  
**WOOD FLAMING URNS**  
 NORTH EUROPEAN, LATE 18TH/EARLY 19TH CENTURY,  
 REDECORATED  
 65cm high, 23cm diameter

£500-800



55

**57**  
**A PAIR OF PARCEL GILT**  
**AND OAK SIDE CHAIRS**  
 LATE 19TH/EARLY 20TH  
 CENTURY, IN THE LOUIS  
 XV STYLE  
 Each with a caned back  
 and floral upholstered  
 drop-in seat  
 104.5cm high, 63.5cm  
 wide, 60cm deep

£500-800



57







**58**  
A PARCEL GILT AND DARK GREEN TOLE VASE LAMP  
MODERN  
With a Greek key band to the top  
71cm high overall

Together with a later white painted tole vase lamp, 19th century, previously a hot water urn now converted and wired as a lamp, 78cm high overall

£400-600



58



59

**59**  
A PAIR OF REGENCY BRONZE RHYTON VASES  
ON WHITE MARBLE BASES  
EARLY 19TH CENTURY  
22.5cm high, 16cm wide, 8cm deep

£200-400

**60 Y**  
A BRASS INLAID ROSEWOOD CHEST  
PROBABLY INDIAN, MID 20TH CENTURY  
With brass handles to the side, on later  
block legs  
58cm high, 89cm wide, 52cm deep

£500-800



60





61

61  
A PAIR OF ROSA BERNAL 'SANTANDER' FABRIC CURTAINS  
BY SIBYL COLEFAX & JOHN FOWLER  
275cm long, 165cm wide

£700-1,000

62  
A WHITE GLAZED POTTERY LAMP OF AMPHORA SHAPE  
MODERN  
With scrolling handles  
57cm high overall

Together with a white glazed pottery vase of amphora shape,  
late 20th century, 41cm high

£250-400



62



63

63  
AN ART DECO WALNUT  
STOOL  
CIRCA 1930  
Upholstered with woven fabric  
43cm high, 46cm wide,  
36cm deep

Together with a rectangular coffee  
table with brass supports,  
47cm high, 82cm wide,  
48cm deep

£300-500



## DIRECTOR CONFIDENTIAL WITH PHILIP HOOPER

We asked joint Managing Director Philip Hooper about his favourite items from the sale that he would curate into an interior, the fabric that showcases them best, as well as a brief insight into his work and influences.

**What compelled you to become an interior decorator?**

An early fascination through magazines and TV programmes in the 1960's where I was captivated by interiors and furniture, plus following a period studying architecture I realised I could combine architecture and decoration as a future career.

**Who or what is your biggest design inspiration?**

Travel.

**What does the Sibyl Colefax & John Fowler look mean to you?**

Effortlessness.

**What element of past Sibyl Colefax & John Fowler design would you like to see revived for the modern day?**

Designing with a sense of place. It is so important to recognise that the location of a project has to drive the design.

---

This fabric is called Fleurette, the design is ambiguous, it could be Regency, or art Deco or even African in its mud cloth colourway chosen here.

I like the fact that it makes you ponder its origin, and its ambiguity ties this eclectic group of things together. Like paint on a well prepared canvas. I like the juxtaposition of the pieces against each other and I can invent a narrative around their connections, they are in a corner of a room where the owner picked things up on their travels, the Kashmiri table, the Cornish serpentine ware, the Gothic mirror and chairs from a trip to Paris, souvenirs and memories connected by the love of collecting.





64  
AN EBONISED PITCH-PINE MIRROR  
PROBABLY FRENCH,  
LATE 19TH CENTURY

With a later plate  
118.5cm high, 91cm wide,  
6.5cm deep

£250-400



64

65  
A PAIR OF CHESTNUT OPEN  
ARMCHAIRS  
FRENCH, 19TH CENTURY, IN THE  
17TH CENTURY STYLE  
Upholstered in a black and white  
geometric woven fabric  
113cm high, 62cm wide, 70cm deep

£700-1,000



65



66  
A BRASS MOUNTED AND BRONZED LEATHER LAMP  
POSSIBLY FRENCH, MID 20TH CENTURY  
91cm high overall

Together with two painted bobbin turned wooden lamps, modern, the  
taller example 40.5cm high overall, the smaller 39cm high overall

£300-500



66 (part lot)



67

67  
FOUR CORNISH SERPENTINE STONE VASES  
LATE 19TH/EARLY 20TH CENTURY  
Varying heights and shapes  
The largest 15.5cm high

£150-250

68  
A CARVED HARDWOOD TABLE  
INDIAN, LATE 19TH/EARLY 20TH CENTURY  
The base folding  
55.5cm high, 60cm wide, 48cm deep

Together with another example of octagonal form, Indian,  
late 19th/early 20th century, 55.5cm high, 53cm square

£300-500



68 (part lot)





70

**70**  
 A RED AND GILT JAPANNED  
 OCCASIONAL TABLE  
 FIRST HALF 20TH CENTURY  
 Decorated with pagodas and figures  
 49cm high, 59cm wide, 44.5cm deep

£300-500

**71**  
 A REGENCY MAHOGANY  
 SIDE TABLE  
 EARLY 19TH CENTURY  
 91.5cm high, 138cm wide,  
 53cm deep

£800-1,200



69

**69**  
 AN IMARI PORCELAIN VASE OF LARGE SIZE  
 JAPANESE, PROBABLY MEIJI PERIOD, LATE 19TH CENTURY  
 Painted and gilt decoration, mounted and wired as a lamp  
 71cm high overall

£400-600



71





72  
A TOLE STANDING LAMP  
MID 20TH CENTURY  
With foliate stem, fitted for electricity  
188cm high  
£300-500

72



73

73  
A CHERRYWOOD CIRCULAR TRIPOD TABLE  
MODERN  
68cm high, 55cm diameter  
£250-400

74  
A BLUE AND WHITE CHECK COTTON  
UPHOLSTERED SLIPPER CHAIR  
LATE 20TH CENTURY  
With grained beech legs  
87cm high, 54cm wide, 84cm deep

£150-250



74

75  
A WROUGHT IRON SIX-BRANCH CHANDELIER  
CONTINENTAL, MID 20TH CENTURY  
With later cylindrical glass shades  
99.5cm high overall

£500-800



76



75

76  
A PAIR OF SOFTWOOD REEDED COLUMN  
CANDLESTICK LAMPS OF LARGE SIZE  
JAPANESE, LATE 19TH/EARLY 20TH CENTURY  
Mounted and wired as lamps  
111cm high overall

£400-600

77  
A CREAM AND PARCEL GILT  
SERPENTINE SIDE TABLE  
EARLY 20TH CENTURY, IN THE LOUIS  
XV STYLE  
Redecorated  
81cm high, 121.5cm wide, 49cm deep

£600-1,000



77



78  
A PAIR OF GILT METAL TWIN BRANCH,  
ROPE TWIST WALL LIGHTS  
MID 20TH CENTURY  
Wired for electricity  
50cm high, 30cm wide, 14cm deep

£300-500



79  
A PAINTED FAUX MARQUETRY AND OAK  
TRIPOD TABLE  
ENGLISH, MID 19TH CENTURY AND LATER  
The circular tilt top painted to simulate radiating  
veneers, the decoration probably later  
66cm high, 44cm diameter

£250-400

80  
A FRUITWOOD BOW FRONTED CORNER  
CUPBOARD  
FRENCH, EARLY 19TH CENTURY  
With a marble top above two doors  
85cm high, 78cm wide, 55cm deep

£250-400



80

81  
A LOUIS XVI PROVINCIAL ELM BERGERE  
LATE 18TH CENTURY  
Upholstered in blue cotton fabric  
101cm high, 69cm wide, 73cm deep

\*Cushion present in image on page 47 not included

£800-1,200



81





**82**  
 A BRASS MOUNTED ONYX LAMP  
 MODERN  
 Wired for electricity  
 48.5cm high overall

£150-250

82



**83**  
 AN ART DECO CHROME AND MIRRORED  
 GLASS OCCASIONAL TABLE  
 CIRCA 1930s  
 59cm high, 52cm wide, 37cm deep

Together with an ebonised oak and tubular  
 brass occasional table, early 20th century, the  
 circular top fitted with two small slides, 66cm  
 high, 60cm diameter

£300-500

83



84

**84**  
 A PAIR OF HARDWOOD  
 OPEN ARMCHAIRS  
 LATE 20TH CENTURY, IN  
 LOUIS XV STYLE  
 Upholstered in Sibyl Colefax  
 & John Fowler blue and white  
 'Livingstone' linen  
 90cm high, 61cm wide,  
 61cm deep

£400-600



85

**85**  
 A GROUP OF FIFTEEN HORN BEAKERS  
 ENGLISH, LATE 19TH CENTURY  
 Various sizes, the largest 40.5cm high

£250-400



86

**86 Y**  
 AN EBONY, BURR ELM AND MAHOGANY  
 TRIPOD GAMES TABLE  
 ENGLISH, MID 19TH CENTURY  
 The tilt top inlaid with a chequer board on a  
 turn column, the inlay possibly later and the  
 top probably associated  
 76cm high, 51cm square

£250-400

**87**  
 A FOUR FOLD SCREEN COVERED IN  
 ORIGINAL MORRIS & Co. PRINTED  
 'CHERWELL' LINEN  
 LATE 19TH CENTURY  
 189cm high, each panel 58cm wide,  
 2.5cm deep

William Morris' successor, John Henry Dearle  
 (1859-1932) originally designed the block  
 printed 'Cherwell' linen in 1887

£700-1,000



87





**88**  
 A PAIR OF BROWN-GLAZED POTTERY TWO-  
 HANDED STORAGE JARS AND COVERS  
 LATE 19TH CENTURY  
 43.5cm high, 28cm diameter

£300-500



88



89

**89**  
 A WALNUT OPEN ARMCHAIR  
 ITALIAN, FIRST HALF 19TH CENTURY  
 With Sibyl Colefax & John Fowler 'seaweed beige' chintz upholstered seat  
 92.5cm high, 58cm deep, 55cm wide

£300-500



90

**90**  
 AN OAK SECRETAIRE CHEST  
 CONTINENTAL, SECOND HALF  
 19TH CENTURY  
 The later wooden top above a fall  
 front enclosing a fitted interior, with an  
 arrangement of two short and two long  
 drawers below, carrying handles to the side,  
 probably previously with a marble top  
 126cm high, 129cm long, 54cm depth

£300-500





91  
AFTER CORNELIS BORSTEEGH  
A SET OF NINE PRINTS FROM 'PENELOPE'S  
WEB'; DEPICTING MISCELLANEOUS  
SUBJECT MATTER  
Coloured engravings  
Each 25 x 20cm (9¾ x 7¾ in.) (8)

£500-700



93

93  
A CREAM PAINTED, GREEN AND BLACK LINE  
DECORATED WATERFALL OPEN BOOKCASE  
ENGLISH, EARLY 19TH CENTURY  
With two drawers, redecorated  
98cm high, 79cm wide, 44cm deep

£600-1,000

92  
A PAIR OF OPALINE GLASS VASES  
FRENCH, SECOND HALF 19TH CENTURY  
Decorated with floral sprays, mounted and  
wired as lamps  
63cm high overall

£300-500



92

94  
A BRASS HEXAGONAL LANTERN  
ENGLISH, EARLY 20TH CENTURY  
In the George III style, fitted for electricity  
54cm high, 37cm wide

Together with a gilt metal and glass lantern,  
20th century, fitted for electricity, 55cm high,  
26cm wide

£400-600



94



95  
FOUR DUSKY MAUVE GAUFRAGED  
VELVET CUSHIONS  
BY SIBYL COLEFAX & JOHN FOWLER  
With a cut fringe, backed with blue silk  
32cm high, 51cm wide

£200-300



95

96  
A 'FALCONER' SOFA  
BY SIBYL COLEFAX & JOHN FOWLER  
Upholstered in Larsen 'Mekele Clay' fabric  
93cm high, 193.5cm long,  
99cm deep

£2,000-4,000



96



97  
A PAINTED BEECH OPEN ARMCHAIR  
ENGLISH, LATE 17TH CENTURY AND LATER  
With a caned back and seat and upholstered  
cushion  
142cm high, 66cm wide, 60cm deep  
£300-500



97



98  
A GILT DECORATED TOLE TWELVE BRANCH  
CHANDELIER  
POSSIBLY FRENCH, 19TH CENTURY AND LATER  
approximately 75cm high, 135cm diameter  
£600-1,000

98

99  
A CREAM PAINTED, SIMULATED  
BAMBOO FOUR POSTER BED  
BY SIBYL COLEFAX & JOHN FOWLER  
Dressed with green 'Linhope stripe' fabric  
by Jane Churchill and 'Nuts and berries' by  
Jean Monro Limited  
226cm high, 189cm wide, 211cm long  
£3,000-5,000



99



**100 Y**  
 AN EBONY, SPECIMEN WOOD AND EBONISED  
 COIN/MEDAL CABINET ON STAND  
 EARLY 19TH CENTURY AND LATER  
 On an associated ebonised mahogany stand, with  
 two geometrically inlaid parquetry doors enclosing  
 fifty four shallow drawers  
 158cm high, 91.5cm wide, 35cm deep

£1,000-2,000



100

**101**  
 A PAIR OF YELLOW GLAZED CYLINDRICAL  
 POTTERY LAMPS  
 MODERN  
 74cm high overall

Together with a turquoise glazed lamp of large  
 size, modern, 98cm high

£500-800



101



102

**102**  
 A RUSTIC LOW SIDE CHAIR WITH A DOUBLE  
 HOOP BACK AND WOODEN SEAT  
 MADAGASCAR, 20TH CENTURY  
 96.5cm high, 41.5cm wide, 57.5cm deep

Together with an octagonal wicker low table with  
 glass top, 20th century, 41cm high, 44cm wide,  
 44cm deep

£100-200

**103**  
 A CHESTNUT CHEST OF DRAWERS  
 FRENCH, 18TH CENTURY  
 Two short and three long drawers  
 85cm high, 98cm wide, 55cm deep

£400-600



103





**104**  
A GRAINED AND POLYCHROME PAINTED  
TOLE TIMEPIECE  
FRENCH, 19TH CENTURY  
With blue and ribbon and rosette  
46cm diameter, 36cm deep

£200-400



**105**  
TWO SIMILAR BLUE GLAZED POTTERY  
LAMPS  
MODERN  
60cm high overall

£200-300

**106**  
A PAIR OF CREAM AND BLUE PAINTED BEDSIDE TABLES OF LARGE SIZE  
CIRCA 1970s, DESIGNED BY JOHN SIDDELEY, 3RD BARON OF KENILWORTH (1924-1981),  
With delicate rope twist and trellis decoration  
77cm high, 89cm wide, 72cm deep

£600-1,000



106

## DIRECTOR CONFIDENTIAL WITH EMMA BURNS

We asked joint Managing Director Emma Burns about her favourite items from the sale that she would curate into an interior, the fabric that showcases them best, as well as a brief insight into her work and influences.

What compelled you to become an interior decorator?  
It was an inevitability.

Who or what is your biggest design inspiration?  
The colours in nature.

What does the Sibyl Colefax & John Fowler look mean to you?  
Timeless elegance and total comfort.

What element of past Sibyl Colefax & John Fowler design would you like to see revived for the modern day?  
As a firm we are inspired but not limited by the past – we are fortunate to have such a large archive of designs that we can pick and choose from.

I have chosen our Leopard Stripe chintz in green. I love green as a colour – John Fowler said that all greens go together, you only have to look at nature! This fabric is versatile and can be used in so many different ways. It's a design we used to make in the 1980's and one that we have recently revived as both a fabric and a wallpaper. As any animal print does, it brings an element of neutrality in design. It is chic and timeless!

To place alongside the versatile fabric, it was difficult to choose from this stunning collection but I'm passionate about black lacquer and I've always loved the clever design of secretaire abattants, such a slim footprint and so practical opening up into a desk – a perfect piece in a small room, with an element of surprise. I would place the delicious treacle glazed Medici lion on top!

As one of my favourite colours is green, I adore the intense colour of the simple pottery plates and bowls which I would like to use in my country garden.

I've chosen two hanging lights both very sculptural in form that would work well in traditional or more contemporary settings, and as no house should be without books I've chosen these two elegant bobbin turned open shelves that could form part of a library.







107

**107**  
A PATINATED WROUGHT IRON HEXANGONAL LANTERN  
POSSIBLY SPANISH, MID 20TH CENTURY  
Fitted for electricity  
97cm high, 54cm diameter

£700-1,000

**108**  
A DARK GREEN AND GILT CHINOISERIE DECORATED  
SECRETAIRE A ABATTANT  
FRENCH, LATE 18TH/EARLY 19TH CENTURY AND  
LATER DECORATED, PROBABLY IN THE EARLY 20TH CENTURY  
With later white marble top above four drawers and a fall front with  
fitted interior, decorated overall with figures and pagodas within  
landscapes  
155.5cm high, 102cm wide, 48cm deep

£1,200-1,800

**109**  
A PART DINNER SERVICE OF MOURRE & MILON GREEN  
GLAZED POTTERY  
FRENCH, 20TH CENTURY  
Comprising twenty three pieces, including thirteen bowls, 19.5cm  
diameter, nine plates, 25cm diameter and smaller, and a two handled  
tureen and cover

£200-300



108



109



111

**111**  
A TREACLE-GLAZED POTTERY MODEL  
OF A MEDICI LION  
ENGLISH, MID 19TH CENTURY  
27cm high, 40cm wide

£300-500

**112**  
A PAIR OF AUBERGINE LACQUERED BOBBIN TURNED OPEN SHELVES  
BY SIBYL COLEFAX & JOHN FOWLER  
With five tiers  
219cm high, 90cm wide, 40cm deep

£1,500-2,500



110

**110**  
A WALNUT SIX BRANCH CHANDELIER  
FRENCH, MID 20TH CENTURY  
With Sibyl Colefax & John Fowler seaweed  
pattern paper shades  
60cm high, 83cm diameter

£600-1,000



112







113

**113**  
A PAIR OF PERIWINKLE BLUE GLAZED VASES  
MODERN  
Mounted and wired as lamps  
72cm high overall

£400-600



114 (part lot)

**114**  
A SET OF FOUR FLORAL COTTON SQUARE CUSHIONS  
BY SIBYL COLEFAX & JOHN FOWLER  
approximately 51cm square

£200-300

**115**  
AN OTTOMAN STOOL  
MODERN  
Upholstered in taupe mohair velvet, on ebonised legs  
41cm high, 175cm wide, 102cm deep

£300-500



115

**116**  
A BAMBOO BENCH  
PROBABLY INDONESIAN, MODERN  
With slatted back and seat  
84.5cm high, 171cm wide, 60cm deep  
£500-800



116





**117**  
 A WHITE PAINTED AND PARCEL  
 GILT SIMULATED BAMBOO MIRROR  
 20TH CENTURY  
 With arched plate surmounted by a  
 floral spray  
 99cm high, 67cm wide

£300-500

117



118

**118**  
 A BLUE AND WHITE PORCELAIN LAMP OF LARGE SIZE  
 19TH CENTURY  
 Now mounted and wired as a lamp  
 approximately 90cm high overall

£800-1,200



119

**119**  
 A WILLIAM IV MAHOGANY  
 PEDESTAL TABLE  
 SECOND QUARTER 19TH CENTURY  
 The oval top above a spreading base  
 with claw feet  
 74cm high, 130cm long, 90cm deep

£400-600



121

**121**  
 A BRASS MOUNTED, CREAM PAINTED AND PARCEL GILT SQUARE  
 OCCASIONAL TABLE  
 LATE 20TH CENTURY, BY SIBYL COLEFAX & JOHN FOWLER  
 With a pierced gallery and mirrored top on spiral tuned column  
 59cm high, 51cm square

£200-400



120

**120**  
 A GREEN PAINTED TOLE TWENTY-ONE LIGHT FOLIATE CHANDELIER  
 PROBABLY FRENCH, LATE 19TH/EARLY 20TH CENTURY  
 With three electric fittings, the remainder candleholders  
 120cm high, 90cm diameter

£400-600



122

**122**  
 A FLORAL PAINTED, PARCEL GILT AND  
 EBONISED BOOK STAND  
 EARLY 20TH CENTURY  
 84cm high, 55cm wide, 21cm deep

£250-400



**123**  
**A FRUITWOOD CROSSBANDED WALNUT CHEST OF DRAWERS**  
 NORTH ITALIAN, LATE 18TH/EARLY 19TH CENTURY  
 With a grey marble top above two short and two long drawers  
 89cm high, 128cm wide, 58cm deep  
 £1,200-1,800



123

**124**  
**A CARVED AND PAINTED WOODEN EIGHT BRANCH CHANDELIER**  
 FRENCH, MID 19TH CENTURY  
 Wired for electricity, redecorated  
 77cm high, 102cm diameter

£600-1,000



124



125

**125**  
**A CARVED AND GILDED AURICULAR SUNDERLAND PICTURE FRAME MIRROR**  
 ENGLISH, 17TH CENTURY  
 With a later bevelled plate, re-gilt  
 102cm high, 82cm wide, 5cm deep

£500-800

**126**  
**A PAIR OF THREE TIER BLUE PAINTED SIDE TABLES**  
 BY SIBYL COLEFAX & JOHN FOWLER  
 72cm high, 54cm wide, 32cm deep

£500-800



126





127

**127**  
A PAIR OF TABLE LAMPS  
IN THE 18TH CENTURY  
BILSTON MANNER  
MODERN  
Decorated with flowers  
54cm high overall (lacking shades)

£200-300

**128**  
A MAHOGANY CHEVAL MIRROR  
ENGLISH, EARLY 19TH CENTURY  
With an associated arched plate  
175cm high, 101cm wide, 68cm deep

£300-500



128

**129**  
A PAIR OF REGENCY LATER  
PAINTED SIDE CHAIRS  
EARLY 19TH CENTURY  
With panel seats  
84cm high, 46cm wide, 40cm deep

Together with an olivewood  
octagonal occasional table, late 19th  
century, 56.5cm high, 38.5cm wide

£200-400



129



**130**  
TWO PAIRS OF LEWIS AND WOOD 'VALLANCE' FABRIC CURTAINS  
BY SIBYL COLEFAX & JOHN FOWLER  
290cm long, 125cm wide

£1,000-1,500



130 (part lot)



131



**131**  
A PINE 'CHEVRET' TABLE  
ENGLISH, LATE 18TH/EARLY 19TH CENTURY  
With four drawers  
98cm high, 41cm wide, 27cm deep

Together with a late Victorian ash towel rail,  
91.5cm high, 76cm wide

And a gilt line decorated ebonised luggage rack,  
20th century, 43cm high, 71cm wide

£300-500

**132**  
AN IRON-BOUND PINE COFFER OF  
LARGE SIZE  
ITALIAN, 19TH CENTURY  
The hinged top with later walnut pleats  
67cm high, 135cm wide, 75cm deep

£400-600



132



133  
A REGENCY BRASS-MOUNTED EBONISED SOFA  
EARLY 19TH CENTURY  
Upholstered in green stripe fabric  
87cm high, 210cm wide, 72cm deep

£1,000-1,500



133

134  
A PAIR OF BLUE AND WHITE DELFT VASES  
DUTCH, 19TH CENTURY  
Now mounted and wired as lamps  
90cm high overall

£1,000-1,500



135

135  
A MOTHER-OF-PEARL INLAID  
CIRCULAR TABLE  
SYRIAN, 20TH CENTURY  
73cm high, 57cm diameter

£200-300



136

136  
A PAIR OF GREY PAINTED FAUTEILS  
LATE 20TH CENTURY, IN THE  
LOUIS XV STYLE  
Upholstered in red weave fabric  
95cm high, 68cm wide, 66cm deep

£400-600



134





**137 Y**  
**AN EBONY MIRROR**  
 19TH CENTURY  
 Reeded frame, with later plate, reduced in size  
 101cm high, 66cm wide, 5cm depth

£200-300

137



138

**138**  
**A PAIR OF GLASS FIVE BRANCH CANDELABRA**  
 LATE 19TH/EARLY 20TH CENTURY  
 Hung with glass beads  
 70cm high, 36cm wide

£400-600

**140**  
**TWO PAIRS OF HAZEL CURTAINS WITH A RUSSET BROWN VELVET BORDER**  
 BY SIBYL COLEFAX & JOHN FOWLER  
 280cm long, 180cm wide

£1,000-1,500



140 (part lot)

**141**  
**A STONE DISH OF LARGE SIZE**  
 INDIAN, 20TH CENTURY  
 With extending handle  
 80cm long including handle,  
 62.5cm wide

£150-250



141

**142**  
**A PAIR OF BANDED SYCAMORE VENEERED TABLES**  
 SECOND HALF 20TH CENTURY  
 61cm high, 70cm wide, 46cm deep

£500-800



142



**139**  
**A BRASS BOUND TEAK CHEST**  
 INDIAN, 19TH CENTURY  
 62cm high, 120cm wide,  
 59cm deep

£300-500

139





**143**  
A SPECIMEN WOOD CUSHION FRAME MIRROR  
19TH CENTURY  
With specimen marquetry inlay and a later plate  
75cm high, 70cm wide, 3cm depth

£500-800



143



144

**144**  
A WALNUT AND BAMBOO CABINET  
NORTH ITALIAN, SECOND HALF 19TH CENTURY  
With two doors enclosing a fitted interior, possibly originally for  
food storage, with paper labels to the reverse, variously inscribed,  
one reading 'GENOVA'  
115cm high, 84.5cm wide, 39cm deep

£400-600



145

**145**  
A FAUX BAMBOO PAINTED OPEN ARMCHAIR  
ENGLISH, 19TH CENTURY  
With a Sibyl Colefax & John Fowler 'Bees Forest' upholstered squab  
cushion above caned seat  
91cm high, 53cm wide, 50cm deep

£500-800





146

**146**  
A PAIR OF BRONZE COLUMN LAMPS  
LATE 20TH CENTURY, IN THE LOUIS PHILLIPE STYLE  
81cm high overall

£400-600



147

**147 Y**  
A REGENCY BAMBOO 'BRIGHTON PAVILION STYLE' CHILD'S CHAIR  
ENGLISH, FIRST HALF 19TH CENTURY, IN THE MANNER OF WILLIAM CHAMBERS  
60.5cm high, 32cm wide, 39cm deep

£200-400



148

**148**  
A PAIR OF WHITE PAINTED  
COMPOSITION STONE  
RIBBED URNS OF LARGE SIZE  
MODERN  
On white patinated wooden  
pedestals  
The urns, 67cm high,  
57cm diameter, the plinths,  
80cm high, 56cm square,  
147cm high overall

£1,000-2,000







149

**149**  
A FAIENCE BLUE AND WHITE OCTAGONAL SECTION POTTERY VASE  
FRENCH, 18TH CENTURY  
Mounted and wired as a lamp  
63.5cm high overall

£600-1,000



150

**150**  
A WALNUT SERPENTINE SIDE CABINET  
ITALIAN, SECOND HALF 18TH CENTURY  
With four doors  
92.5cm high, 111cm wide, 53cm deep

£1,000-1,500

**151**  
A PAIR OF 'POTS' FABRIC CURTAINS WITH A 'SEAWEED KHAKI' LINING  
BY SIBYL COLEFAX & JOHN FOWLER  
each curtain 230cm in the drop, 200cm wide

£700-1,000



151 (part lot)

**152**  
A SET OF FOURTEEN BRONZE SINGLE BRANCH  
WALL LIGHTS OF LARGE SIZE  
LATE 20TH CENTURY  
Overall height 35cm, backplate 23.5cm high,  
14.5cm wide, the arm 50.5cm deep

£3,000-5,000



152 (set of fourteen)



153

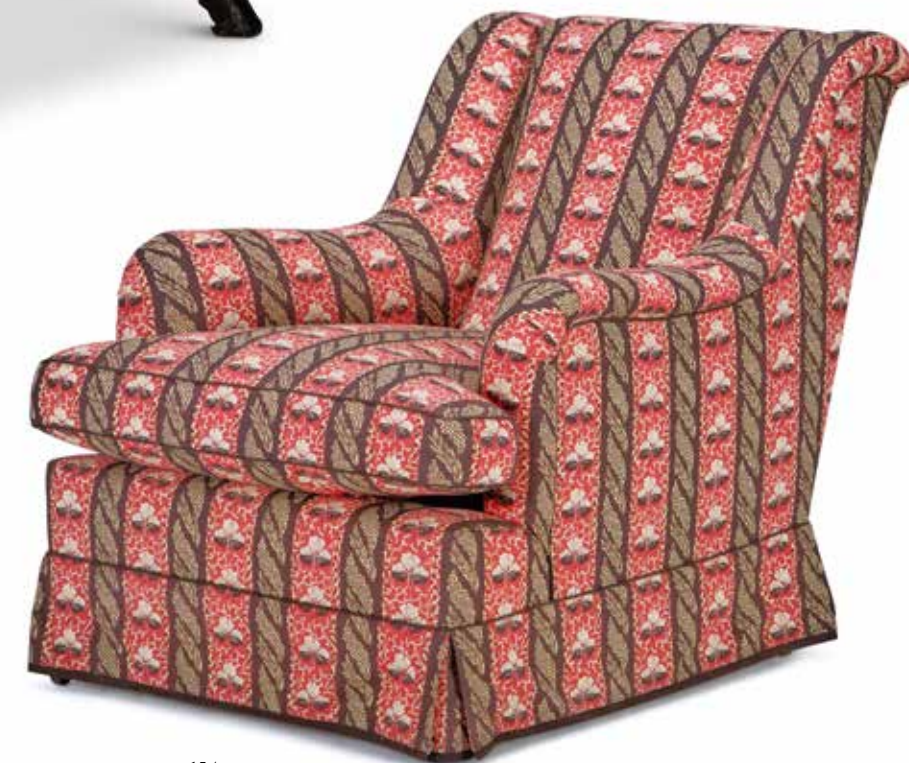
**153**  
A HARDWOOD LOW TABLE OF LARGE SIZE  
20TH CENTURY  
Made from a cross section of a tree-trunk on four rustic legs  
54cm high, 100cm wide, 82cm deep

£500-800

**154**  
A 'ST JAMES' EASY ARMCHAIR  
BY SIBYL COLEFAX & JOHN FOWLER  
Upholstered in Sibyl Colefax & John Fowler  
'Strawberry Leaf' cotton  
85cm high, 73cm wide, 105cm deep

'Strawberry Leaf,' a Georgian pattern thought to date from about 1760 was found by John Fowler, who gave the original fabric to the V&A museum.

£1,500-2,500



154





155  
 A PAIR OF GILT BRONZE LAMPS OF LARGE SIZE  
 ENGLISH, MID 19TH CENTURY  
 Decorated with vine leaves, fitted for electricity  
 98cm high overall

£600-1,000



155



156

156  
 A PAIR OF BLACK PAINTED AND GILT DECOUPAGE DECORATED  
 WOODEN OBELISKS  
 MODERN  
 49.5cm high, 13cm square

£300-500

157  
 AN ARTS AND CRAFTS EBONISED OAK DROP-LEAF  
 GATELEG TABLE  
 EARLY 20TH CENTURY  
 The circular top comprising eight leaves  
 77cm high, 112cm diameter

£400-600



157





158

**158**  
A PAIR OF WHITE GLAZED POTTERY VASE LAMPS  
MODERN  
With mask handles, now mounted and wired as lamp  
76cm high overall

£400-600

**159**  
A MAHOGANY ARMCHAIR FRAME  
EARLY 19TH CENTURY  
101cm high, 62cm wide, 86cm deep

£200-300



159



160

**160**  
A PERSIAN CARPET  
PROBABLY TABRIZ  
Approximately 414 x 304cm

£600-800



**161**  
A WALNUT ARMCHAIR  
FRENCH, 19TH CENTURY,  
IN THE 17TH CENTURY  
STYLE  
With Colefax and Fowler  
'Eaton check blue' upholstery  
96cm high, 46cm wide,  
66cm deep

£500-800

161





162

**162**  
A PAIR OF GILT METAL AND MIRRORED  
THREE-BRANCH WALL LIGHTS  
MID 20TH CENTURY  
Hung with faceted glass beads, paper shades,  
fitted for electricity  
52cm high, 39cm wide, 16cm deep

£500-800



**163**  
A PAINTED FAUX MARBLE AND  
MAHOGANY TABLE  
ENGLISH, MID 19TH CENTURY  
The top painted to simulate inlaid marble,  
the decoration possibly original  
70cm high, 28cm diameter

£250-400



164



163

**164**  
A WALNUT OPEN ARMCHAIR OF  
LARGE SIZE  
PROBABLY NORTH EUROPEAN,  
MID 20TH CENTURY  
With red striped cotton cushion  
above a woven rope seat  
100cm high, 85cm deep, 75cm wide

£600-1,000

**165**  
A PAIR OF BRASS MOUNTED GLASS LAMPS  
19TH CENTURY AND LATER  
In the form of ionic capitals with blue and white  
glass reeding  
83cm high overall

£500-800



165

**166**  
A GREY PAINTED CONSOLE TABLE  
19TH CENTURY, OF NEO-CLASSICAL DESIGN  
With an associated serpentine shaped black  
Portoro marble top  
81cm high, 144cm wide, 65cm deep

£2,000-4,000



166





**167**  
 A MIRROR OF LARGE SIZE  
 20TH CENTURY  
 The surround with glass border plates  
 182.5cm high, 119cm wide

£600-1,000



167



168



**168**  
 A PAIR OF RED AND GILT TOLE  
 LIDDED CHESNUT URNS  
 MODERN, IN THE GEORGE III  
 STYLE  
 With lion head handles  
 31cm high

£200-400

**169**  
 A PAIR OF PAINTED SIMULATED  
 BAMBOO SIDE CHAIRS  
 ENGLISH, LATE 20TH CENTURY  
 Each with blue cotton and tufted  
 button upholstered seat  
 92.5cm high, 47cm wide, 50cm deep

£600-1,000



169





170

**170**  
A SANG DE BOEUF GLAZE VASE OF LARGE SIZE  
CHINESE, 20TH CENTURY  
Mounted and wired as a lamp  
99cm high overall

Together with a smaller Sang de Boeuf glaze vase lamp,  
Chinese, 20th century, 96cm high overall

£500-800

**171**  
FIVE VARIOUS CUSHIONS BY SIBYL COLEFAX & JOHN FOWLER  
Comprising:  
A rectangular Chinese toile patterned cushion, 36cm high, 66cm wide,  
A cushion made up from 20th Century indigo dyed linen, 33cm high,  
49.5cm wide  
A rectangular cushion made in an onyx coloured velvet, 25.5cm high,  
51cm wide  
A rectangular cushion made in an off-white linen and contrast piping,  
36cm high, 43.5cm wide  
A large square beige velvet  
cushion, 50cm square

£250-400



171

**172**  
A 'BRIDGEWATER' SOFA IN GUINEVERE FABRIC  
BY SIBYL COLEFAX & JOHN FOWLER  
87cm high, 224cm long, 106 cm deep

Together with three floral patterned fabric throw cushions,  
by Sibyl Colefax & John Fowler, 38cm high, 49cm wide

£2,000-3,000



172

## DIRECTOR CONFIDENTIAL WITH WENDY NICHOLLS

We asked Chairman Wendy Nicholls about her favourite items from the sale that she would curate into an interior, the fabric that showcases them best, as well as a brief insight into her work and influences.

**What compelled you to become an interior decorator?**

A desire for beauty and order. Always interested in interiors, I visited many houses in youth and followed the work of the good decorators of their time. I very much wanted to have an outlet for my imagination.

**Who or what is your biggest design inspiration?**

Individuals, both houses and people. The inspiration can come from an exhibition – wonderful colours of icons or Mughal paintings, from landscape – again colours, from historic interiors and antique carpets and textiles.

**What does the Sibyl Colefax & John Fowler look mean to you?**

Suitability for the client and the house. A strong feeling for the structure of the interior. A lightness of touch with the decoration so that it feels very agreeable but is not obvious.

**What element of past Sibyl Colefax & John Fowler design would you like to see revived for the modern day?**

Pared down elegance. Our carpets which are being revived and work wonderfully well in numerous contexts being tough and long lasting and capable of being made in any colour which can greatly change the character.

The fabric I have chosen is Seaweed – khaki. It can be used on walls, upholstery, curtains, anything! It is so versatile. In this particular khaki colour, it is a good contrast to the blue. With the objects I have chosen I would use it on the walls probably with a seaweed coloured braid to finish it. Plain linen a shade lighter than the background of the print for the curtains and possibly two inset petersham ribbons – seaweed over blue.

The items which I have chosen could work in a contemporary or traditional context. I particularly like the commodes which are chic, and feel that the colour and flavour of the lamps sit happily with them. The planters would be lovely filled with white and green plants. I like the fact that they don't match. They would freshen the whole thing. The rug is charming and sits well with the simplicity of the rest.







173

**173**  
TWO SIMILAR DELFT BLUE AND WHITE  
FACETTED OVOID VASES  
19TH CENTURY  
Mounted and fitted lamps  
57cm high overall and similar

£800-1,200



174

**174**  
A PAIR OF PAINTED COMMODES  
SWEDISH, 19TH CENTURY  
Each with a top later painted grey above two drawers  
87cm high, 110cm wide, 44.5cm deep

£1,200-1,800



**175**  
TWO PAINTED WIREWORK PLANTERS  
FRENCH, 20TH CENTURY  
One cream and one green  
14cm high, 45cm wide

£200-400



175



176



**176**  
A PAIR OF REVERSE GLASS PAINTINGS  
CHINESE EXPORT, LATE 18TH CENTURY  
One depicting a courting couple, the other a lady and her page boy,  
in Greek key pattern frames, one with paper label inscribed 'this pair,  
Chinese glass picture original frames was left to me in his will by the  
late John Fowler, C.B.E.'

Provenance:  
With John Fowler (1906-1977), The Hunting Lodge, Odiham,  
Hampshire, until bequeathed to Imogen Taylor

£600-1,000

**177**  
A SWEDISH FLATWEAVE RUG  
CIRCA 1950  
210cm long, 128cm wide

£600-900



177



178

A DECALCOMANIA GLASS VASE OF LARGE SIZE  
19TH CENTURY OR LATER

Decorated with Chinoiserie figures, mounted and wired as a lamp  
105cm high overall

£1,000-2,000



178



179

AFTER CASANOVA AND VANNI  
A SET OF TWENTY TWO FRAMED  
COPPERPLATE ENGRAVINGS  
FOR THE 'DELLE ANTICHITA  
DI ERCOLA, TOMO OTTAVO'  
PUBLISHED IN 1792

Engraving  
Each 32 x 22.5cm  
(12½ x 8¾ in.) (22)

£2,000-3,000



179



180

180

A BIRCHWOOD AND EBONISED TRIPOD TABLE  
SWEDISH, FIRST HALF 19TH CENTURY

The circular tilt top radially veneered  
74cm high, 66cm diameter

£400-600

181

A BLACK LEATHER CLOSE NAILED ARMCHAIR  
FRENCH, MID 20TH CENTURY

With adjustable back and additional printed velvet  
cushion  
86cm high, 66.5cm wide, 80cm deep

£800-1,200



181





182

**182**  
A GILTWOOD HEXADECAGON  
CONVEX MIRROR  
MODERN  
65cm diameter, 7cm deep

£200-300

**183**  
A PAIR OF PAINTED POTTERY  
MODELS OF CHICKENS  
LATE 20TH CENTURY  
45cm high

Together with a smaller pair of  
pottery bantams, 20th century,  
22.5cm high

£300-500



183

**184**  
A PAIR OF CREAM AND BLUE PAINTED  
SIMULATED THREE-TIERED SIDE TABLES  
CIRCA 1970s, PROBABLY BY SIBYL COLEFAX &  
JOHN FOWLER  
Each with brass three quarter gallery  
70cm high, 46cm square

£400-600



184







185

**185**  
A PAIR OF IMARI PORCELAIN GU SHAPED  
VASES OF LARGE SIZE  
JAPANESE, 19TH CENTURY  
Later ormolu mounted and wired as lamps  
80cm high overall

£1,000-2,000



186

**186**  
AN INLAID OAK CHEST OF DRAWERS  
FRENCH, 18TH CENTURY  
With serpentine top, two short and two long drawers  
80cm high, 131cm wide, 68cm deep

£400-600



187

**187**  
A PAIR OF WHITE PAINTED SIMULATED  
BAMBOO OPEN ARMCHAIRS  
MODERN  
With upholstered Sibyl Colefax & John Fowler  
'red seaweed' fabric squab cushions  
107cm high, 57cm wide, 62cm deep

£400-600



189



**188**  
A SET OF BRASS MOUNTED WALNUT OPEN  
HANGING SHELVES  
SECOND HALF 19TH CENTURY  
With faux bamboo turned end supports,  
65cm high, 80cm wide, 22.5cm deep

£200-400



188

190 (part lot)



**189**  
A PAIR OF DELFT POLYCHROME VASES AND COVERS OF  
LARGE SIZE  
DUTCH, 19TH CENTURY, IN THE MANNER OF PIETER  
ADRIAENSZ KOCX  
With lion finials and decorated with foliate lappets and flower  
filled baskets  
69cm high, 33cm wide

£1,500-2,500

**190**  
TWO PAIRS OF PINK 'GOTHIC STRIPE' FABRIC CURTAINS  
BY SIBYL COLEFAX & JOHN FOWLER  
With a Colefax and Fowler 'Seafern red' lining  
each curtain approximately 295cm in the drop, 240cm wide

Together with two arched pelmets by Sibyl Colefax & John  
Fowler, both in pink 'Gothic stripe' fabric and backed in Colefax  
and Fowler 'Seafern red', each approximately 77cm high at  
longest point, 167cm wide, 15cm deep

£1,200-1,800





**191**  
A DIRECTOIRE INLAID MAHOGANY  
SECRETAIRE A ABATANT  
FRENCH, CIRCA 1800

With a marble top above a fall front and  
two doors  
140.5cm high, 87cm wide, 46cm deep

**Provenance:**  
With John Fowler (1906-1977) at the  
Hunting Lodge, Odiham, Hampshire,  
until bequeathed to Imogen Taylor, see:  
Martin Wood, Frances Lincoln Ltd, p.97,  
for a photograph of the secretaire shown  
open in the hall at the Hunting Lodge

£1,000-2,000

191

**192**  
A BLACK AND GILT-DECORATED MIRROR  
LATE 19TH/EARLY 20TH CENTURY

With a later plate  
71.5cm high, 63.5cm wide

**Provenance:**  
With John Fowler (1906-1977), The Hunting Lodge, Odiham, Hampshire,  
until bequeathed to Imogen Taylor

£500-800



192



193



**193**  
A PAIR OF WHITE METAL CANDLESTICK LAMPS  
LATE 20TH CENTURY

Wired for electricity  
71cm high overall

£200-300

**194**  
A REGENCY EBONISED OPEN ARMCHAIR  
EARLY 19TH CENTURY

With red and cream striped cotton upholstery  
84cm high, 61cm wide, 61cm deep

£500-800



194





195

**195**  
A GILTWOOD OVERMANTLE MIRROR  
ENGLISH, MID 19TH CENTURY  
With arched rope twist frame  
102cm high, 108cm wide

£200-400



196

**196**  
A BLUE AND WHITE SHOULDERED PORCELAIN VASE  
JAPANESE, PROBABLY ARITA, 17TH/18TH CENTURY  
Decorated with floral panels, mounted and wired as a lamp  
56cm high overall

£600-1,000



197

**197**  
A GILT AND GREEN PAINTED  
WROUGHT IRON COFFEE TABLE  
FRENCH, MID 20TH CENTURY  
With a figured scagliola top  
53cm high, 72cm wide, 56cm deep

£300-500

198 (NO LOT)



199

**199**  
A PAIR OF BRONZE COLUMN LAMPS OF LARGE SIZE  
LATE 20TH CENTURY, IN THE LOUIS PHILLIPE STYLE  
101cm high overall

£500-800

**200**  
A DUCK EGG BLUE, WHITE AND FLORAL PAINTED  
SERPENTINE CHEST OF DRAWERS  
FRENCH, LATE 19TH CENTURY  
Later painted, with three drawers  
82.5cm high, 111cm wide, 49.5cm deep

£700-1,000



200





201  
 A LOUIS XIV GILTWOOD BAROMETER  
 BY SELON CORRICELLI, LATE 18TH CENTURY  
 With a paper dial and laurel carved frame  
 85cm high, 48cm wide, 6cm deep

£300-500



201



202

202  
 A BRASS MOUNTED AND OPALINE GLASS  
 COLUMN LAMP  
 FRENCH, SECOND HALF 19TH CENTURY  
 Painted with twisting floral decoration  
 70cm high overall

Together with a brass mounted floral decorated  
 porcelain lamp, french, second half 19th century,  
 56cm high overall

£250-400

203  
 A BRASS-MOUNTED MARBLE AND MAHOGANY  
 CIRCULAR TABLE  
 FRENCH, FIRST HALF 19TH CENTURY  
 74cm high, 66cm diameter

£400-600



203





**204**  
A SILVERED AND EBONISED  
WALL MIRROR  
LATE 20TH CENTURY  
165cm high, 100cm wide, 4cm deep

£300-500

204



**205**  
A PARCEL GILT GREEN PAINTED TOLE  
TEA CANNISTER  
19TH CENTURY  
Decorated with oriental figures and number 2,  
later mounted and wired as a lamp  
68cm high overall

Together with a pair of similar tea cannister lamps,  
19th century, 60cm high overall

£500-800

205

**206**  
A PAIR OF CREAM PAINTED SIMULATED  
BAMBOO BEDSIDE TABLES  
BY SIBYL COLEFAX & JOHN FOWLER  
68cm high, 71cm long, 37cm deep

£200-400



206

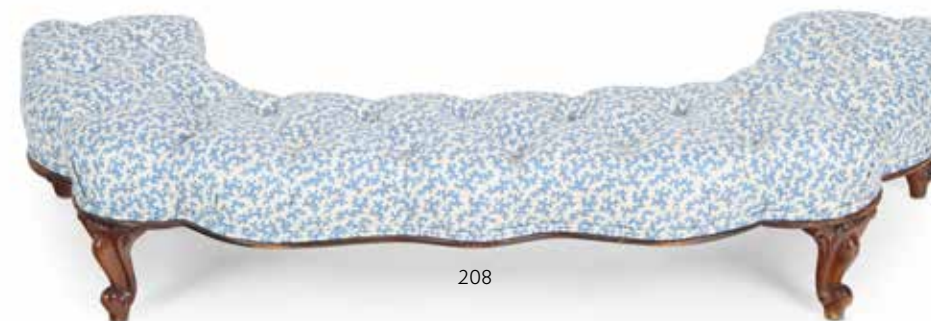


**207**  
A PAIR OF CREAM AND GREEN  
LINE PAINTED BEDSIDE TABLES  
CIRCA 1970s, BY SIBYL COLEFAX  
& JOHN FOWLER  
63cm high, 39cm wide, 67cm long

£200-400



207



208

**208**  
A BLUE AND WHITE BUTTON  
UPHOLSTERED CURVED FIRESIDE  
FOOTSTOOL  
19TH CENTURY  
Later reupholstered in Sibyl Colefax &  
John Fowler 'Seaweed' fabric  
105cm high, 44cm wide, 22cm deep

£200-300

**209**  
A CREAM PAINTED, FAUX BAMBOO  
FOUR POSTER BED  
BY SIBYL COLEFAX & JOHN FOWLER  
Dressed with Jean Munro  
'Sophie's Thistles' fabric  
226cm high, 189cm wide, 211cm long

£3,000-5,000



209





**210**  
 A POLYCHROME PAINTED WOODEN LAMP  
 INDIAN, 20TH CENTURY  
 Of spiral form, mounted as a lamp and wired for electricity  
 81cm high overall

Together with a geometrically painted papier mache vase  
 lamp, 20th Century, 63cm high overall

And a dark green painted geometric wooden lamp,  
 modern, 80cm high overall

£300-500



210



211

**211**  
 A GREEN PAINTED 'ARLEY' THREE TIER TABLE  
 MODERN, BY WILLIAM YEOWARD LIMITED  
 With recessed top and gothic quatrefoil lattice work  
 77cm high, 77cm wide, 45cm deep

£400-600

**212**  
 A 'FRIARS' SIDE CHAIR  
 BY SIBYL COLEFAX &  
 JOHN FOWLER  
 With cream cotton upholstery and  
 bullion fringe  
 97cm high, 57cm wide, 66cm deep

Together with an unupholstered  
 'Friars' chair frame, of similar size

The 'Friars' chair is named after  
 Barbara Astor's House, Friars Well,  
 Oxfordshire, where John Fowler  
 discovered the original

£600-900



212







213



**213**  
A PAIR OF 'BOWOOD' PATTERN CURTAINS  
BY SIBYL COLEFAX & JOHN FOWLER  
each approximately 253cm in the drop, 260cm wide

Together with another pair of 'Bowood' pattern curtains, by Sibyl Colefax & John Fowler, each approximately 263cm in the drop, 256 cm wide

And two pelmets made up in the 'Bowood' pattern, the first, 200cm long, 16cm deep, 46cm drop; the second, 205cm long, 16cm deep, 46cm drop

£1,000-1,500



214



**214**  
TWO EASY ARMCHAIRS WITH SIBYL COLEFAX & JOHN FOWLER  
'BOWOOD' CHINTZ LOOSE COVERS  
LATE 20TH CENTURY

The larger armchair with yellow cotton upholstery beneath, the smaller armchair with rose patterned glazed cotton  
The larger, 83cm high, 77cm wide, 94cm deep;  
the smaller 84cm high, 73cm wide, 81cm deep

£500-800

215 (NO LOT)

**216**  
A CHILD'S PAINTED WHEELBARROW  
ENGLISH, LATE 19TH/EARLY 20TH CENTURY  
Inscribed with the initials 'G.E.W.'  
36cm high, 87cm long, 37cm wide

£200-300



216

**217**  
A TWO-TIER WICKER DRINK OR COCKTAIL TABLE  
SECOND HALF 20TH CENTURY  
81cm high, 88.5cm wide, 61cm deep

£400-600



217





**218**  
**A GILTWOOD PIER MIRROR**  
 FRENCH, LATE 18TH CENTURY  
 The divided plate within a beaded and moulded frame,  
 probably previously part of a boiserie  
 125cm high, 69cm wide, 6cm deep

£500-800



218



219



219



**219**  
**A GILT AND BLACK JAPANNED WOODEN LAMP**  
 20TH CENTURY  
 With chinoiserie decoration  
 85cm high overall

Together with a gilt and red tole glass column lamp, 20th century,  
 77cm high overall

And a Kashmiri cream and green decorated wooden candlestick  
 lamp, 20th century, 46cm high (lacking shade)

£250-400

**220**  
**A JAPANESE LACQUER-PANELLED AND 'BRIARWOOD' TABLE**  
 ENGLISH, LATE 19TH CENTURY  
 The top decorated with birds and foliage  
 70cm high, 57.5cm diameter

£300-500



220





221

**221**  
A DELFT BLUE AND WHITE FACETTED VASE  
DUTCH, EARLY 19TH CENTURY  
Mounted and wired as a lamp  
66cm high overall

£500-800



222

**222**  
A GREEN, YELLOW AND CREAM TOLE  
HANGING SHELF  
ENGLISH, MODERN  
75cm high, 28cm wide, 15cm deep

£150-250

**223**  
A YELLOW LACQUERED 'LYALL' COFFEE  
TABLE OF LARGE SIZE  
BY SIBYL COLEFAX & JOHN FOWLER  
45cm high, 171cm wide, 110cm deep

£1,000-2,000



223

**224**  
THREE PAIRS OF CURTAINS IN LARSON SAFFRON 'SOUND'  
FABRIC WITH 'GOTHIC STRIPE' BORDERS AND A COLEFAX AND  
FOWLER 'HONEYSUCKLE' LINING  
BY SIBYL COLEFAX & JOHN FOWLER  
each curtain 280cm in the drop, 310cm wide

£1,200-1,800



224 (part lot)

**225**  
SIX VARIOUS CUSHIONS  
BY SIBYL COLEFAX & JOHN FOWLER  
Comprising:

A pair of cushions made up in a pink linen trimmed with a green fringe, 41cm square  
A cushion made of 17th century brocatelle, backed with 18th century yellow bourette,  
finished with red and yellow tassels, 38.5cm high, 56cm wide  
A cushion made up from 18th century silk damask backed with yellow bourette,  
finished with yellow tassels, 23cm high, 48.5cm wide  
A large square cushion made up in pale green Fortuny fabric, 61cm square  
A cushion made from 16th century dark red bracetelle back with yellow bourette,  
finished with tassels, 33cm high, 46cm wide

£300-500



225

**226**  
A 'FALCO DAYBED' UPHOLSTERED IN MANUEL  
CANOVAS 'OSCAR SABLE' FABRIC  
BY SIBYL COLEFAX & JOHN FOWLER  
With studded detailing, six cushions and a further two Sibyl  
Colefax & John Fowler square cushions made up in a lilac  
silk check fabric  
53.5cm square  
240cm long, 98cm high, 112cm depth

**Provenance:**  
This sofa was included in the Sibyl Colefax & John Fowler  
room, designed by Lucy Hammond Giles for Wow House,  
Chelsea Harbour Design Centre, June 2024

£2,000-4,000



226





227

227  
A BLUE AND WHITE FLORAL DECORATED SPIRAL FLUTED POT-BELLIED VASE  
LATE 19TH CENTURY  
Later wired for electricity, without shade  
40cm high, 18.5cm wide

£200-300

228  
A PAINTED FIRESCREEN  
LATE 20TH CENTURY  
In the form of a flower filled vase  
80cm high, 67cm wide

£200-400

229  
A BRASS CLUB FENDER  
ENGLISH, EARLY 20TH CENTURY  
Upholstered in striped horsehair  
61cm high, 150cm wide, 65cm deep

£800-1,200



229



228



230  
A DAYBED UPHOLSTERED IN 'HONEYSUCKLE YELLOW' FABRIC  
BY COLEFAX AND FOWER  
On square oak legs and stretchers  
100cm high, 78cm wide, 152cm deep

£1,000-2,000

230





230A

**230A**  
A SMALL WALNUT KNEEHOLE DESK  
IN THE WILLIAM AND MARY STYLE  
19TH CENTURY  
With two drawer above a pair of  
cupboard drawers  
53cm deep, 89cm long, 75cm high  
  
£100-150

**230C**  
AN ARTS AND CRAFTS STAINED BEECH  
PIERCED LADDERBACK ARMCHAIR  
LATE 19TH CENTURY  
With stylised heart decoration to the  
cross-rail, and  
rushed seat  
46cm deep, 53cm wide, 102cm high  
  
£80-120



230C



230B

**230B**  
A WILLIAM IV MAHOGANY TABLE  
Rounded rectangular top  
50cm deep, 74cm long, 74cm high  
  
£80-120



230D



**230D**  
A PAIR OF PINE OPEN BOOKCASES  
COMPRISING 19TH CENTURY ELEMENTS  
203cm high, 82cm wide, 28cm depth  
  
£500-800



A watercolor illustration of several pink and light red roses with green leaves, set against a light cream background. The style is soft and painterly.

# A PRIVATE LONDON HOUSE

A 1970s COMMISSION





# THE ENTRANCE HALL

## LOTS 231-249







231



232 Y

A WILLIAM IV BRAZILIAN ROSEWOOD DAYBED  
EARLY 19TH CENTURY, IN THE MANNER OF WILLIAM TROTTER  
Upholstered by Sibyl Colefax & John Fowler in yellow cotton  
85cm high, 61cm deep, 186cm long

£600-1,000

231  
A PAIR OF BRASS TWIN BRANCH WALL APPLIQUES  
STYLED AS PINEAPPLES  
FIRST HALF 20TH CENTURY  
53cm high, 39cm wide

£500-800



232



233

233 λ  
FELIX KELLY (NEW ZEALAND 1916-1994)  
PHILAE TEMPLE  
Oil on board  
Signed and dated '81' (lower left)  
42 x 55cm (16½ x 21½ in.)

Provenance:  
Partridge Fine Arts Ltd, London

£3,000-5,000

Sold with a Sibyl Colefax & John Fowler rope hanging





234

234  
JAN KIP (DUTCH 1653-1722)  
A SET OF SIX ENGRAVINGS OF COUNTRY SEATS, CIRCA 1720  
Engraving  
Each 47 x 56cm (18½ x 22 in.)  
In Sibyl Colefax & John Fowler frames (6)

£1,000-2,000



235  
(part lot,  
each one of a pair)



235  
A PAIR OF GILTWOOD AND SIMULATED PORPHYRY WALL BRACKETS  
19TH CENTURY, THE TOPS PROBABLY LATER  
30cm high

Together with a pair of Italian giltwood wall brackets carved with eagles, 20th century, 21cm high

£400-600

236 Y  
A SIMULATED ROSEWOOD AND PARCEL-GILT CENTRE TABLE  
ENGLISH, MID-19TH CENTURY  
With an associated inset Brazilian rosewood panel above a lapetted frieze on turned and fluted legs, possibly originally with a marble top  
78cm high, 101cm wide, 60cm deep

£300-500



236



238

238  
AFTER JACQUES-EDME DUMONT (1761-1844),  
A BRONZE OF MILO OF CROTON  
19TH CENTURY  
40cm high

£600-1,000



237

237  
A REGENCY ORMOLU AND BRONZE FOUR LIGHT COLZA CHANDELIER  
EARLY 19TH CENTURY  
Previously oil, now fitted for electricity  
95cm high, 44cm wide

£1,200-1,800



239

239  
A REGENCY LATER CREAM AND GREEN-PAINTED PINE DRESSING TABLE  
EARLY 19TH CENTURY  
Of D-shaped outline with a drawer and two doors on square tapering legs  
74cm high, 87cm wide, 56cm deep

£300-500





240  
A PAINTED RECTANGULAR  
WALL MIRROR DECORATED  
WITH A TRELIS PATTERN  
BY SIBYL COLEFAX & JOHN  
FOWLER, CIRCA 1970  
153cm high, 112cm wide

Together with a Directoire  
style brass-mounted, simulated  
rosewood and parcel gilt brass  
timepiece, by Sibyl Colefax &  
John Fowler, hung with ribbon,  
36cm diameter

£400-600



240

241  
A DIRECTOIRE WALNUT  
COMMODE  
EARLY 19TH CENTURY  
With a later marble top, three  
drawers and canted angles  
91cm high, 127cm wide,  
57cm deep

£400-600



241





242

**242**  
A PAIR OF BROWN SALT GALZED  
STONEWARE TWO-HANDLED VASES  
ENGLISH, CIRCA 1840  
Moulded in relief with fruit and flowers,  
later mounted and wired as lamps  
57cm high

£200-400



**243**  
A PAIR OF CARVED PINE FIGURES OF  
A GENTLEMAN AND LADY  
NORTH EUROPEAN, 19TH CENTURY  
36cm high

£300-500



245 (part lot)



**245**  
A PAIR OF REGENCY BRONZE AND ORMOLU TWIN  
BRANCH WALL APPLIQUES  
EARLY 19TH CENTURY  
32cm high, 22cm wide

Together with a pair of Regency ormolu candlesticks, hung with  
glass lustres 25cm high

£200-300



246

**246**  
A WILLIAM IV GILTWOOD ROPE TWIST OVAL MIRROR  
CIRCA 1830  
70cm high, 58cm wide

£300-500



243

**244**  
A NEEDLEWORK AND UPHOLSTERED MAHOGANY STOOL  
ENGLISH, MID 19TH CENTURY  
Upholstered in red striped velvet, with a central tapestry panel depicting a cat  
46.5cm high, 49.5cm square

Together with another cream upholstered example with cross stitch fabric top,  
mid 19th century, approximately 39cm high, 49cm square

£300-500



244



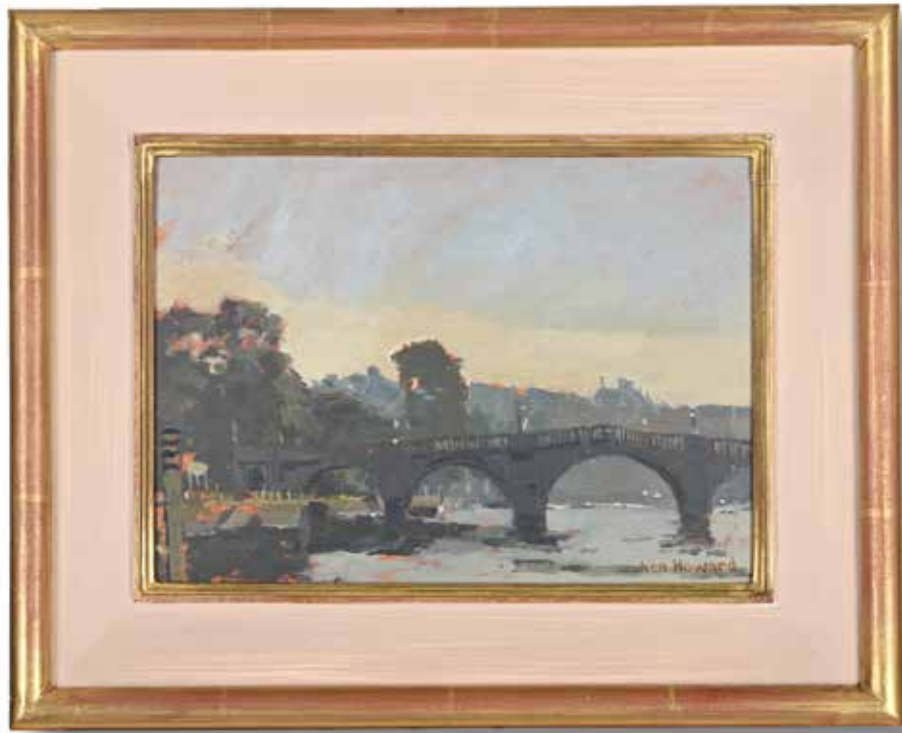
247

**247**  
A PAIR OF EASY ARMCHAIRS  
BY HOWARD AND SONS LTD, CIRCA 1970  
With original 'H&S' monogrammed green and white ticking and  
yellow cotton loose covers, stamped HOWARD CHAIRS LTD,  
LONDON, ENGLAND, and one labelled HOWARD CHAIRS LTD, ....  
30 - 31 LYME STREET, LONDON NW1  
80cm high, 74cm wide, 88cm deep

£1,000-2,000







248

248 λ  
KEN HOWARD (B.1932)  
*RICHMOND II*  
Oil on board  
Signed lower right  
14.5 x 21cm (5½ x 8¼ in.)

Exhibited:  
New Grafton Gallery, London 20th February  
1924, catalogue no.54B

£700-1,000



249

249 λ  
KEN HOWARD (B.1932)  
*BRIGHTON PIER*  
Oil on board  
Signed

POSSIBLY Exhibited:  
New Grafton Gallery, London 20th February  
1924, catalogue no.20

£600-900

# THE DRAWING ROOM

LOTS 250-285







250



**250**  
ATTRIBUTED TO WILLIAM PAYNE (BRITISH CIRCA 1760-1830)

*THE RUINED FOLLY;  
AND CASTLE ON A CLIFF ABOVE A LAKE*  
Watercolour, pen, and grey ink, a pair  
16 x 22.5cm (6¼ x 8¾ in.); 16 x 21cm (6¼ x 8¼ in.) (2)

Provenance:  
John Spink, London

£300-500

**251**  
A PAIR OF BRASS COLUMN LAMPS  
CIRCA 1970  
61cm high overall

Together with another pair with differing  
shades, 61cm high

£200-300



251



252

**252**  
A PAIR OF EBONISED AND PARCEL GILT  
WINDOW SEATS  
AFTER THE DESIGN BY CHARLES TATHAM,  
CIRCA 1970  
With fluted tapering legs headed by  
rosette blocks  
57cm high, 72cm wide, 47cm deep

£500-800

**253**  
CIRCLE OF JOHN RATHBONE (BRITISH 1750-1807)  
*A RUINED CASTLE ABOVE A LAKE*  
Oil on canvas  
33.5 x 42cm (13 x 16½ in.)

£500-800



253



254

**254**  
A REGENCY OVAL POLYCHROME PAINTED TOLE TRAY  
POSSIBLY PONTYPOOL, EARLY 19TH CENTURY  
With a pierced gallery  
78.5cm wide

£200-400

**255**  
AN EBONISED AND PARCEL GILT TORCHERE  
CIRCA 1970  
With a circular simulated marble top, the fluted supports headed by lion masks  
94cm high 32,5cm diameter

£200-400



255





256  
 A REGENCY BLACK AND GILT-JAPANNED  
 TOLE LOG BOX  
 EARLY 19TH CENTURY  
 45cm wide

Together with a decoupage coal scuttle  
 55.5cm high

£200-400



256



257

257  
 A PAIR OF SIMULATED ROSEWOOD AND PARCEL GILT  
 SIMULATED BAMBOO TRIPOD LAMPS  
 BY SIBYL COLEFAX & JOHN FOWLER, CIRCA 1970  
 141cm high, 37cm wide

£800-1,200

258  
 A PAIR OF 'FRIARS' CHAIRS  
 BY SIBYL COLEFAX & JOHN FOWLER,  
 CIRCA 1970  
 Upholstered in acorn pattern covers on turned  
 beech legs with brass castors, the back legs  
 stamped 1229 and 123?  
 92cm high, 61cm wide, 70cm deep

£800-1,200



258





259

259  
A PAIR OF STAFFORDSHIRE PEARLWARE DEMI-LUNE  
BOUGH-POTS  
EARLY 19TH CENTURY  
Ozier-moulded and painted with panels of stylised flowers,  
14cm x 16.5cm high

Together with a pair of mid 19th century Staffordshire models  
of parrots, 24cm high

£400-600

260  
A GEORGE III GILTWOOD OVERMANTLE MIRROR  
THIRD QUARTER 18TH CENTURY  
Carved overall with rockwork, foliage and C-scrolls, with a central  
oval plate surrounded by border plates, redecorated, later plates  
90cm high, 168cm wide

£1,500-2,500



260

261  
BRITISH SCHOOL (19TH/20TH CENTURY)  
A VIEW OF A WOOLEN MILL FROM  
ACROSS THE RIVER  
Oil on canvas  
62 x 75cm (24¼ x 29½ in.)

£600-1,000



261

262  
A REGENCY SIMULATED ROSEWOOD  
SIDE CABINET  
EARLY 19TH CENTURY  
With a shaped gallery with open shelves  
above a panelled door and turned column  
uprights  
148cm high, 77cm wide, 32cm deep

£400-600



262





263

263 λ  
FELIX KELLY (NEW ZELAND 1914-1994)  
*FORGOTTEN RESORT*  
Oil on board  
Signed and dated '69' (lower right)  
54.5 x 70cm (21¼ x 27½ in.)

Provenance:  
Kennedy Galleries, New York

Exhibited:  
New York, The R. W. Norton Art Gallery, *Felix Kelly: A Romantic Realist.*,  
April 16 - May 14, 1972, n.23

£5,000-8,000





264 (part lot)

**264**  
**A PAIR OF CREAM AND BLUE PAINTED HANGING SHELVES**  
 LATE 19TH CENTURY, REDECORATED BY SIBYL COLEFAX & JOHN FOWLER  
 With later mirrored backs  
 53cm high, 66cm wide

Together with a collection of twenty three pieces of blue and white porcelain, circa 1780, mostly Liverpool, various sizes

£800-1,200



265

**265**  
**AN EMPIRE WALNUT SIDE TABLE**  
 FRENCH, EARLY 19TH CENTURY  
 With a black fossil marble top, frieze drawer and scrolled supports, a later mirrored back and shaped plinth  
 83cm high, 81.5cm wide, 42.5cm deep

£500-800

**266**  
**A PAIR OF POTTERY VASES MODELLED AS NAUTILUS SHELLS**  
 ENGLISH, THIRD QUARTER 19TH CENTURY  
 Partially decorated in pink, 26cm high

£200-300



266



267

**267**  
**A GEORGE III LATER CREAM AND GREEN-PAINTED OPEN ARMCHAIR**  
 IN THE MANNER OF INCE & MAYHEW, LATE 18TH CENTURY  
 The oval padded back and padded scrolled arms above a bowed seat, on tapering turned and fluted legs restorations, redecorated  
 97cm high, 63cm wide, 60cm deep

£600-1,000

**268**  
**AN AUBUSSON CARPET**  
 approximately 407 x 256cm

£2,000-3,000



268





269  
 A PAIR OF FLORAL DECORATED  
 POTTERY LAMPS  
 CIRCA 1970  
 75cm high overall

£100-150



269



270

270  
 A PAIR OF EBONISED AND PARCEL GILT SIDE TABLES  
 BY SIBYL COLEFAX & JOHN FOWLER, CIRCA 1970  
 Each with a drawer and tapering ring-turned legs  
 67cm high, 51cm wide, 46cm deep

£400-600





271

271  
THOMAS (BRITISH 1749-1840) AND  
WILLIAM (BRITISH 1769-1837) DANIELL  
VIEW OF MUTURA ON THE RIVER JUMNA;  
AND THE RUINS IN ROTAS GUR, BAHAR  
Coloured aquatints  
Each 44.5 x 59cm (17½ x 23 in.) (2)

£800-1,200



272

272  
ATTRIBUTED TO WILLIAM PAYNE  
(BRITISH CIRCA 1760-1830)  
A COASTAL SCENE  
Watercolour, pen and grey ink  
27 x 40cm (10½ x 15½ in.)

£300-500

273  
A PAIR OF GREEN TOLE AND PORCELAIN TWIN BRANCH WALL APPLIQUES  
FRENCH, 19TH/ EARLY 20TH CENTURY  
34cm wide

£400-600



273



274

274  
A REGENCY PAINTED  
SIMULATED BAMBOO  
SIDE CHAIR  
EARLY 19TH CENTURY  
With a caned back and seat,  
stamped WA  
84cm high, 49cm wide,  
51cm deep

£150-250

275  
A PAIR OF GREEN PAINTED AND  
BRASS MOUNTED SIDE CABINETS  
BY SIBYL COLEFAX & JOHN FOWLER,  
CIRCA 1970  
Each enclosing two short drawers and  
with lion mask handles to the sides  
84cm high, 97.5cm wide, 51cm deep

£600-1,000



275







276

276  
**FOLLOWER OF AELBERT CUYP**  
*A RIDER HOLDING THE TETHER OF A STALLION*  
 Oil on panel  
 30.5 x 40.5cm (12 x 15¾ in.)

£500-800

277  
**A PAIR OF CREAM AND GREEN PAINTED WATERFALL BOOKCASES**  
 ENGLISH, 19TH CENTURY  
 Each with open shelves and a drawer on short tapering legs with castors  
 90.5cm high, 58.5cm wide, 31cm deep

£800-1,200



277



278

278 λ  
**COLIN W. BURNS (BRITISH B. 1944)**  
*ST BENET'S LEVEL, NORFOLK*  
 Oil on canvas  
 Signed (lower right)  
 60 x 81cm (23½ x 31¾ in.)

Provenance:  
 Sale, Christie's, South Kensington, 15th November 2007, lot 12

£1,500-2,500



279

279  
**FIVE VARIOUS DELFT BLUE AND WHITE VASES**  
 VARIOUS DATES, 18TH, 19TH AND EARLY 20TH CENTURIES  
 The central vase with the mark of A. Pennis (1759-1770)  
 the tallest vases 26.5cm high

£500-800

280  
**A REGENCY GREEN AND GILT JAPANNED SIDE CABINET**  
 EARLY 19TH CENTURY  
 With open shelves above a drawer and a door, part of the decoration refreshed  
 136cm high, 65cm wide, 30cm deep

£700-1,000



280





281



281  
CIRCLE OF JAMES ARTHUR O'CONNOR (IRISH 1792-1841)  
*A RIVER VIEW WITH TWO FIGURES IN A BOAT; AND A RIVER VIEW WITH A RUIN*  
Oil on canvas, a pair  
Each 44.5 x 60cm (17½ x 23½ in.) (2)

£1,000-2,000



282  
 A GEORGE III MAHOGANY  
 SECRETAIRE BOOKCASE  
 CIRCA 1770, IN THE MANNER OF  
 THOMAS CHIPPENDALE  
 With a replaced pierced swan neck  
 cresting, above two glazed doors  
 enclosing adjustable shelves, the  
 secretaire drawer enclosing a fitted  
 interior, above three graduated long  
 drawers, with short grain kickers, one  
 foot retaining laminated blocks  
 240cm high, 109cm wide, 49cm deep

£800-1,200



282

283  
 A REGENCY LATER BLACK  
 PAINTED OPEN ARMCHAIR  
 EARLY 19TH CENTURY  
 With an X-splat, squab cushion and  
 caned seat  
 81cm high

Together with a George IV ebonised  
 x-frame window seat, early 19th  
 century, 88cm wide

£300-500



283



284



284  
 A PAIR OF CREAM BLUE AND FLORAL  
 PAINTED CIRCULAR TWO TIER SIDE  
 TABLES  
 BY SIBYL COLEFAX & JOHN FOWLER,  
 CIRCA 1970  
 With fluted and faceted tapering supports  
 70cm high, 59cm diameter

£300-500

285  
 A PAINTED DOLL'S HOUSE  
 OF LARGE SIZE  
 MID-20TH CENTURY  
 Fitted with furniture and  
 figures to the inside  
 61cm high, 126cm wide,  
 45cm deep

£150-250



285



# THE DINING ROOM

LOTS 286-308







286

**286**  
**A GILTWOOD MIRROR**  
20TH CENTURY, IN THE GEORGE III STYLE  
The oval plate within a pierced rockwork,  
foliate and C-scroll surround  
117cm high, 74cm wide

£800-1,200



287

**287**  
**A REGENCY CREAM AND GREY-PAINTED**  
**OPEN BOOKCASE**  
EARLY 19TH CENTURY  
With a later black fossil marble top, the curved  
angles modelled as ribbon-tied reeds, with  
brass handles to the ends  
91cm high, 105cm wide, 34cm deep

£500-800





288  
TWO SIMILAR GUSTINIANI RED POTTERY PLATES  
CIRCA 1800  
Decorated with figures in the Etruscan style, script marks verso  
21.5cm diameter

Together with four various Chevinto del Vecchio plates, 19th century,  
each approximately 21cm diameter

£1,000-1,500



288



289

289  
A GEORGE III TWIN PEDESTAL MAHOGANY DINING-TABLE  
LATE 18TH CENTURY  
The rounded rectangular crossbanded top with two additional later  
leaves on turned pedestals with sabre legs and brass caps and castors  
73cm high, 303cm long, 137cm wide

£700-1,000



290

290  
A GROUP OF MOSTLY LIVERPOOL AND WORCESTER  
BLUE AND WHITE PORCELAIN  
VARIOUS DATES MOSTLY THIRD QUARTER 18TH CENTURY

£400-600

291  
A PAIR OF COLD-PAINTED TERRACOTTA TWO-HANDLED VASES  
ENGLISH, MID 19TH CENTURY  
Painted *en grisaille* with landscape vignettes  
35.5cm high

£300-500



291

292  
A PAIR OF GILTWOOD WALL BRACKETS  
ENGLISH, 19TH CENTURY  
30cm high, 27cm wide, 19cm deep

£200-400



292

293  
A SET OF TEN MAHOGANY DINING-CHAIRS  
MID-20TH CENTURY, IN THE GEORGE III STYLE  
Including two open armchairs, the pierced and foliate-carved splats  
and wavy uprights above red padded drop-in seats  
the armchairs, 100cm high, the side chairs 98cm high

£800-1,200



293 (part lot)





**294**  
 ATTRIBUTED TO THOMAS HARDY  
 (BRITISH 1842-1897)  
 A WOODED LANDSCAPE WITH A COTTAGE  
 BESIDE A LAKE AND A FIGURE IN THE  
 FOREGROUND  
 Oil on canvas  
 24 x 35.5cm (9¼ x 13¾ in.)

Provenance:  
 C. Rich, London

£400-600



294



295

**295**  
 A PAIR OF CUT-GLASS TWIN-BRANCH  
 CANDELABRA  
 ENGLISH, EARLY 19TH CENTURY  
 Floriform bases and fluted stems  
 33cm high, 26cm wide

£100-200

**296 Y**  
 A REGENCY REVIVAL BRAZILIAN ROSEWOOD AND  
 SATINWOOD SIDE CABINET  
 BY CREWS & SON, EXMOUTH, MID 20TH CENTURY  
 Of broken D-shaped outline with a later marble top above doors  
 and curved panels with pleated silk lining, with panelled and inlaid  
 pilasters, on turned feet, labelled 'CREWS & SON, HOUSE, LAND,  
 ESTATE AND INSURANCE AGENTS, FURNISHERS, CABINET  
 MAKERS, POLISHERS, REMOVERS, STORERS, PACKERS,  
 SHIPPERS, FUNERAL DIRECTORS, EXMOUTH'

90.5cm high, 145cm wide, 41cm deep  
 £400-600



296





297  
CIRCLE OF SAWREY GILPIN  
(BRITISH 1733-1807)  
*PORTRAIT OF A GREY STANDING  
IN A LANDSCAPE BY A COTTAGE*  
Oil on canvas  
Inscribed on verso 'The Pony was  
the Property of Thomas Hutcheson  
Oliver Esq.'  
43 x 58cm (16¾ x 22¾ in.)

£600-1,000

298  
ATTRIBUTED TO BENJAMIN  
BLAKE (BRITISH 1757-1830)  
*A PAIR OF STILL LIVES OF GAME*  
Oil on canvas, a pair  
Each 24 x 19cm (9¼ x 7¼ in.) (2)

£300-500



297



298





299

**299**  
 A SET OF FOUR GILTWOOD, TWIN BRANCH WALL LIGHTS  
 19TH CENTURY  
 Decorated with rams masks and swags, now fitted for electricity  
 46cm high

£300-500

**300**  
 A PAIR OF REGENCY LATER RED PAINTED AND  
 PARCEL-GILT SIDE CHAIRS  
 EARLY 19TH CENTURY  
 With cane seats  
 86cm high



300

**301**  
 A CREAMWARE PART DESSERT SERVICE  
 ENGLISH, EARLY 19TH CENTURY  
 Decorated in iron-red and black with leaf bands  
 comprising; seven plates, two lozenge-shaped dishes, an oval  
 navette-shaped dish, a pierced oval basket, a pedestal lozenge-  
 shaped dish and a sauce tureen and cover

£200-300



301







302

**302**  
**JOHN MULCASTER CARRICK (BRITISH 1833-1896)**  
*VILLA FRANCA, NICE*  
 Oil on board  
 Signed (lower right)  
 18.5 x 29cm (7¼ x 11¼ in.)

Provenance:  
 Sale, Christie's, South Kensington, 29 June 2011, lot 84

£500-800



303

**303**  
**JOHN MULCASTER CARRICK (BRITISH 1833-1896)**  
*MONT ORGUEIL CASTLE, JERSEY*  
 Oil on board  
 Signed (lower left)  
 18.5 x 29cm (7¼ x 11¼ in.)

Provenance:  
 Sale, Christie's, South Kensington, 29 June 2011, lot 85

£500-800



304

**304**  
**AN OLIVE-GREEN AND BLUE-PAINTED KNEEHOLE DRESSING-TABLE**  
 19TH CENTURY, REDECORATED  
 With a three-quarter gallery and two deep drawers on turned legs  
 83cm high, 91cm wide, 50cm deep

Together with a similar bedside cupboard, 19th century, with a shaped and pierced gallery, panelled door and shallow drawer 71cm high, 38cm wide, 36cm

£200-300



**305**  
**ENGLISH SCHOOL (LATE 19TH CENTURY)**  
*PORTRAIT OF A SEATED GENTLEMAN*  
*BENEATH A TREE*  
 Oil on panel  
 74 x 59cm (29 x 23 in.)

£600-1,000



305

**306**  
**EGISTO MANZUOLI**  
**(ITALIAN LATE 19TH CENTURY)**  
*CASTLE BESIDE A LAKE WITH FIGURES*  
 Oil on canvas  
 46 x 41cm (18 x 16 in.)

£500-800



306





307



307  
ATTRIBUTED TO MICHELANGELO  
MAESTRI (ITALIAN 1741-1812)  
ALLEGORIES FROM THE DAY AND NIGHT  
SERIES BY RAFFAELLO SANZIO, CALLED  
RAPHAEL

Mixed media on paper  
Each 40 x 30cm (15½ x 11¾ in.)  
In gilt mounted frames (4)

£2,000-4,000

308  
A PAIR OF REGENCY AND LATER BLACK,  
GILT AND POLYCHROME-DECORATED  
OPEN ARMCHAIRS

EARLY 19TH CENTURY  
Each decorated with summer flowers, above  
a squab cushion

£300-500



END OF SALE



308





# COMING UP AT DREWEATTS & FORUM AUCTIONS

30 January | Forum Auctions  
Fine Books, Manuscripts and Works on Paper

5 February | Forum Auctions  
Modern & Contemporary Art and Editions

6 February | Dreweatts  
Art & Interiors

11 February | Dreweatts  
Old Master, British and European Art

19 February | Dreweatts  
Fine Silver and Objects of Vertu

20 February | Dreweatts  
Colefax and Fowler: A Collection from the Pimlico Road Showroom and a Private London House

25 February | Dreweatts  
Fine Wine, Champagne, Vintage Port and Spirits

26 February | Forum Auctions  
The Art of Music: Bob Dylan and Rock 'n' Roll Icons

27 February | Forum Auctions  
The Ricky Jay Collection

4 March | Dreweatts  
Single Owner Collection

6 March | Dreweatts  
Art & Interiors

12 March | Dreweatts  
Modern & Contemporary Art

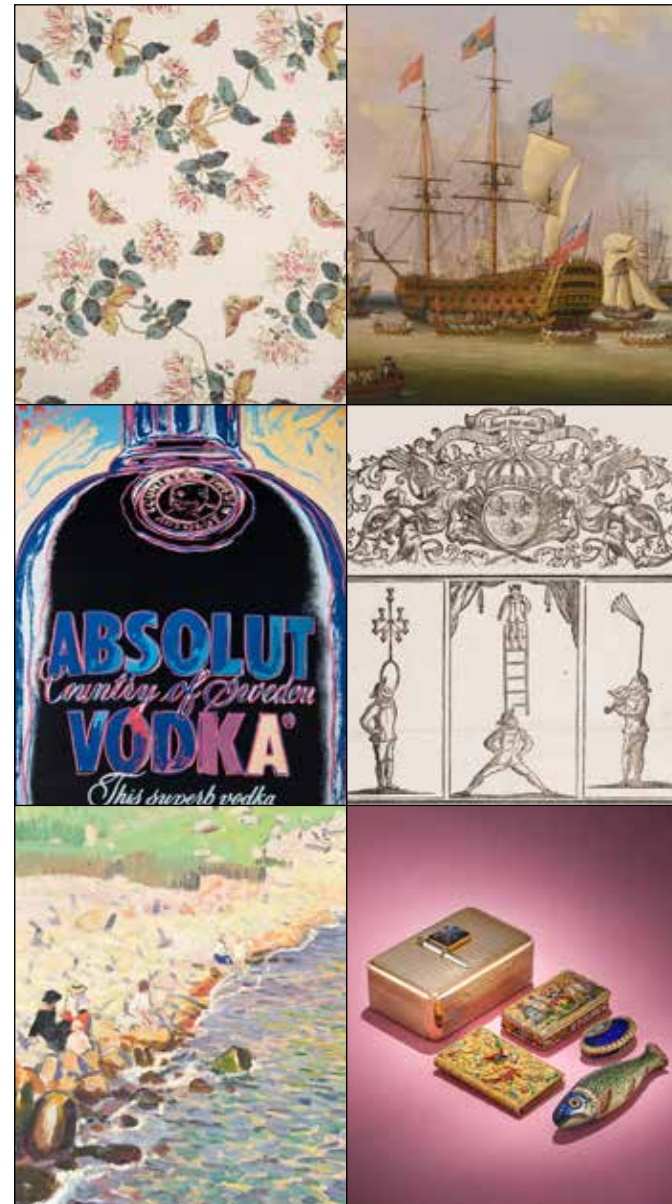
13 March | Dreweatts  
Art on a Postcard International Women's Day Auction

19 March | Dreweatts  
The Mastery of Fabergé, Jewellery and Objects of Vertu

19 March | Dreweatts  
Fine Jewellery

20 March | Dreweatts  
Fine Watches, Pens and Luxury Accessories

25 March | Dreweatts  
Fine Clocks, Barometers And Scientific Instruments



## NOW INVITING ENTRIES

If you have an item you would like valued for sale at auction, we would be delighted to provide you with a free, no obligation estimate. Contact us to arrange an in-person appointment or visit our website to see how to submit the information online.

# DREWEATTS

EST. 1759

**dreweatts.com**  
info@dreweatts.com  
**NEWBURY**  
**01635 553 553**  
**LONDON**  
**020 7839 8880**

**forumauctions.co.uk**  
info@forumauctions.co.uk  
**LONDON**  
**020 7871 2640**

 **Forum Auctions**

Please see Conditions of Business and Conditions of Sale on the following pages.

Dreweatts & Dreweatts 1759 are trading names of Dreweatts 1759 Ltd. Dreweatts 1759 Ltd is registered in England, company number: 10758982, registered office: C/O Bishop Fleming LLP, 10 Temple Back, Bristol, BS1 6FL.

## IMPORTANT NOTICES

### BUYING AT DREWEATTS

There are several ways you can bid at a Dreweatts auction; in person, by leaving a commission or absentee bid, on the telephone where available and live via the internet – please make arrangements before the sale. THIS NOTICE APPLIES ONLY TO A PERSON WHO WISHES TO BID IN PERSON, OR BY LEAVING A COMMISSION OR ABSENTEE BID, AT A DREWEATTS PUBLIC AUCTION. For bidding at an online auction or for online bidding at a public auction please see our Online Auction Terms published on our website at [www.dreweatts.com](http://www.dreweatts.com).

### BIDDING IN PERSON

If intending to buy you are required to register your name and details at reception prior to the commencement of the auction. You will be required to provide a proof of identity and address to register for bidding. You will then be allocated a bidding number, which you use when bidding for an item.

### COMMISSION BIDS

Dreweatts will execute bids on your behalf if you are unable to attend the sale. Commission or absentee bids are accepted either directly at reception, or can be sent by post, fax, email, telephone or via the website: [www.dreweatts.com](http://www.dreweatts.com).

Dreweatts will add these bids to the auctioneers' sale book and will undertake to purchase the lots on your behalf as cheaply as allowed by other bids and reserves. If two buyers submit identical commission bids Dreweatts may prefer the first bid received.

Dreweatts does not accept liability for failing to execute commission bids, or for any errors or omissions.

### CONDITION

Bidders must satisfy themselves as to the condition of each lot. Condition reports are available on request – see the Conditions of Business at the back of this catalogue forming part of these Auction Terms and Conditions for more information regarding condition reports. Requests for condition reports must be submitted by 4pm on the day prior to the auction; condition reports may be available alongside the lot description on the online catalogue at: [www.dreweatts.com](http://www.dreweatts.com).

### COMMISSION CHARGES

All purchases are subject to a buyer's premium, which is charged per lot at 26% of the hammer price (31.2% including VAT) up to and including £20,000, 25% (30% including VAT) of the hammer price from £20,001 up to and including £500,000, 20% (24% including VAT) of the hammer price from £500,001 up to and including £1,000,000 and 12.5% of the hammer price (15% including VAT) in excess of £1,000,000. A theta symbol (θ) indicates that the lot is a zero rated item and therefore not subject to VAT on the buyer's premium. This applies to bound books (manuscripts and printed), unframed maps and albums. In the event the lot has a dagger (†) beside the lot number in the catalogue, this indicates that the lot is owned by an entity or company required to pay VAT (generally not an Antique Dealer, as they operate under a dealers margin scheme). VAT is payable at 20% on the Hammer Price. Lots marked with a double dagger (‡) (presently a reduced rate of 5%) or Ω (presently at standard rate of 20%) have been imported from outside the UK under Temporary Admission regime and therefore the buyer must pay the import VAT at the appropriate rate on the duty inclusive hammer price.

### PAYMENT

Payment will be accepted, if you are a successful bidder, by debit card issued in the name of the Buyer by a UK bank and registered to a UK billing address; by all major UK issued credit cards issued in the name

of the Buyer and registered to a UK billing address with the exception of Diners Club; by bank transfer direct into our bank account, Bank Details: NatWest, 30 Market Place, Newbury, Berkshire RG14 5AG. Account Name: Dreweatts 1759 Ltd. A/C: 62412949, Sort Code: 60-15-07, BIC: NWBKGB2L, IBAN: GB21NWBK60150762412949. The name of the bank account holder should match the name of the buyer. First time buyers who are not present at the saleroom are requested to pay by bank transfer.

### CITES REGULATIONS

Please note that lots marked with the symbol (Y) in this catalogue may be subject to CITES Regulations when exported. Relevant CITES Regulations may be found at [www.gov.uk/guidance/cites-imports-and-exports](http://www.gov.uk/guidance/cites-imports-and-exports).

### COLLECTIONS, SHIPPING AND STORAGE

Before being able to collect your purchases you are required to pay the hammer price, plus the applicable commissions, and obtain a receipt acknowledging payment. Collection of the purchased lots is at the purchaser's risk and expense and whilst Dreweatts do not provide packing and despatch service we can suggest some carriers. Unless otherwise stated below, purchases are available for collection from Dreweatts Donnington Priory salerooms from Monday to Friday (9am-5pm) by appointment only. If you wish to have items shipped to you, please see our list of suggested shippers on our website.

**Garden items, smaller objects and small pictures:** items will remain at Donnington Priory, but please check when booking your collection.

**Note:** Buyers of large garden items and statuary should ensure they/their carriers are able to remove the items themselves. Please call Dreweatts in advance of any collection for further advice.

**Large items (furniture, carpets, rugs, mirrors, large objects):** items will be removed to commercial storage at Sackville-West Moving & Storing (Andover SP10 3SA) on Friday 21 February and will be available for collection from Monday 24 February onwards. Items removed to Sackville-West will be stored free of charge until Sunday 2 March. From Monday 3 March, items will be subject to a transfer fee of £20 (plus VAT) and a storage charge of £3 (plus VAT) per lot per part or full day thereafter. These charges will be the sole liability of the purchaser and will be billed directly to them by Sackville-West Moving & Storing. Sackville-West Moving & Storing will provide an additional week's free storage and waive the transfer fee if they are instructed by the purchaser to deliver to them. On payment of all sales and storage costs, items will be available for collection by appointment from Sackville-West Moving & Storing (tel: + 44 (0) 2080 909988; email: [office@sackvillewest.co.uk](mailto:office@sackvillewest.co.uk)).

### FURTHER INFORMATION

The colours printed in this catalogue are not necessarily a true reflection of the actual item. All weights and measures given in the catalogue should be regarded as approximate.

### VALUATION SERVICES

Dreweatts provides a range of confidential and professional valuation services to private clients, solicitors, executors, estate managers, trustees and other professional partners. These services include auction valuations, insurance valuations, probate valuations, private treaty valuations, valuations for family division or for tax purposes. For more information, please see our website: [www.dreweatts.com](http://www.dreweatts.com).

For directions to Donnington Priory, please see our website: [www.dreweatts.com](http://www.dreweatts.com).

Parking is available at Donnington Priory in two car parks on either side of the saleroom.



## INFORMATION FOR BUYERS AT PUBLIC AUCTIONS

1. **INTRODUCTION.** The following notes are intended to assist Bidders and Buyers, particularly those inexperienced or new to our salerooms. All of our auctions and sales are conducted on our printed Auction Terms and Conditions, including these Conditions of Sale and Business, which are readily available for inspection and normally accompany catalogues. Our staff will be happy to help you if there is anything you do not fully understand.

Any particular auction and/or any particular lot in an auction may be subject to different or additional terms which will be published in our auction catalogue. All auctions and sales of wines and spirits, jewellery, watches and clocks are subject to the special terms set out in the relevant Notices in relation to those items published in our auction catalogue and, in the event of any conflict or inconsistency, those special terms prevail over any other terms in our Auction Terms and Conditions. By bidding at the auction, you agree to be bound by these terms.

2. **AGENCY.** As auctioneers we usually act as agents for the seller whose identity, for reasons of confidentiality, is not normally disclosed. Accordingly if you buy at auction your contract for the item or items purchased is with the seller and not with us as the auctioneer.

3. **ESTIMATES.** Estimates are designed to help buyers gauge what sort of sum might be involved for the purchase of a particular lot. Estimates may change and should not be thought of as the sale price. The lower estimate may represent the reserve price and certainly will not be below it. Estimates do not include the Buyer's Premium or VAT (where chargeable). Estimates are prepared some time before the sale and may be altered by announcement before the sale. They are in no sense definitive.

4. **BUYER'S PREMIUM.** The Conditions of Sale forming part of our Auction Terms and Conditions require the buyer to pay a buyer's premium on the hammer price of each lot purchased. The buyer's premium is 26% of the hammer price up to and including £20,000, 25% of the hammer price from £20,001 up to and including £500,000, 20% of the hammer price from £500,001 up to and including £1,000,000, and 12.5% of the hammer price in excess of £1,000,000. VAT at the prevailing rate of 20% is added to buyer's premium and additional charges as defined below.

5. **VAT.** A theta symbol (θ) indicates that the lot is a zero rated item and therefore not subject to VAT on the buyer's premium. This applies to bound books (manuscripts and printed), unframed maps and albums. A dagger symbol (†) indicates that VAT is payable by the purchaser at the standard rate (presently 20%) on the hammer price as well as being an element in the buyer's premium. This imposition of VAT is likely to be because the seller is registered for VAT within the United Kingdom and is not operating the Dealers Margin Scheme. A double dagger (‡) indicates that the lot is being sold whilst subject to temporary importation and that import VAT at the reduced rate (currently 5%) calculated on the hammer price is due. (Ω) Indicates that the lot has been imported from outside the UK and that import VAT at the standard rate (currently 20%) calculated on the hammer price (inclusive of any applicable duty) is due. Lots offered subject to temporary importation (‡ or Ω) require relevant customs procedure to be completed prior to the property leaving Dreweatts' premises or being exported. Dreweatts will issue the instruction to a customs broker or shipper upon receipt of full payment for the lots. The import VAT charged for lots with symbols † or Ω can be refunded if Dreweatts is instructed to re-export the property or if the VAT liability is transferred to another Temporary Admission authorisation. Lots which appear without the above symbols indicate that no VAT is payable on the hammer price; this is because such lots are sold using the Auctioneers Margin Scheme and it should be noted that the VAT included within the buyer's premium is not recoverable as input tax.

6. **DESCRIPTION AND CONDITION.** Condition reports are provided on our website or upon request. The absence of a report does not imply that a lot is without imperfections. The detail in a report will reflect the estimated value of the lot. Large numbers of such requests received shortly before the sale may mean that reports cannot be provided for all lots. Members of staff are not trained restorers or conservators and, particularly for higher value lots, you should obtain an opinion from such a professional. Dreweatts is not liable for damage to gilded picture frames, plaster picture frames or picture frame glass; if a Lot is or becomes dangerous, we may dispose of it without notice to bidders in advance in any manner we see fit and will be under no liability for doing so. We recommend that you always view a lot in person.

We are dependent on information provided by the seller about a lot and whilst we may inspect lots and act reasonably in taking a general view about them we are normally unable to carry out a detailed examination and frequently no examination of lots in order to ascertain their condition in the way in which it would be wise for a buyer to do. Intending buyers have ample opportunity for inspection of goods and, therefore, accept responsibility for inspecting and investigating lots in which they may be interested and the corresponding risk should they not do so. Please note carefully the exclusion of liability for the condition of lots contained

in the Conditions of Sale. Neither the seller nor we, as the auctioneers, accept any responsibility for their condition. In particular, mechanical objects of any age are not guaranteed to be in working order. However, in so far as we have examined the goods and make a representation about their condition in the auction catalogue, we shall be liable for any defect which is not reflected in that representation and which that examination ought to have revealed to the auctioneer but which would not have been revealed to the buyer had the buyer examined the goods. Additionally, in specified circumstances lots misdescribed because they are 'deliberate forgeries' may be returned and repayment made. There is a 3 week time limit. (The expression 'deliberate forgery' is defined in our Conditions of Sale).

7. **ELECTRICAL GOODS.** These are sold as 'antiques' only and if bought for use must be checked over for compliance with safety regulations by a qualified electrician before use.

8. **EXPORT OF GOODS.** Buyers intending to export goods should ascertain (a) whether an export licence is required and (b) whether there is any specific prohibition on importing goods of that character because, e.g. they may contain prohibited materials such as ivory. Ask us if you need help.

Private overseas buyers can only receive goods free of VAT or have the VAT amount refunded if Dreweatts acts as exporter in relation to the sale, the goods are exported within 3 months of the sale and Dreweatts is in possession of adequate export documents. The VAT refunds are available for transactions exceeding £2,500. If you arrange for the goods to be picked up/delivered to you directly we will charge UK VAT at the appropriate rate and no refund will be available. Please note, buyers are responsible for completing the importation procedures as well as the payment of any relevant duty/VAT payable on importation into the destination country.

Where the purchase has been made in the business or trading name, VAT refund will be available on proof of export provided within 3 months of the sale.

9. **BIDDING.** Bidders will be required to register before the sale commences and lots will be invoiced to the name and address on the sale registration form. Bidders are required to provide a government issued identity document and a proof of address. Please enquire in advance about our arrangements for telephone bidding.

10. **COMMISSION BIDDING.** Commission bids may be left with the auctioneers indicating the maximum amount to be bid excluding buyer's premium. Dreweatts will add these bids to the auctioneers' sale book and they will be executed as cheaply as possible having regard to the reserve (if any) and competing bids. If two buyers submit identical commission bids the auctioneers may prefer the first bid received. Please enquire in advance about our arrangements for the leaving of commission bids by telephone or fax. Dreweatts does not accept liability for failing to execute commission bids, or for any errors or omissions.

11. **METHODS OF PAYMENT.** Payment will be accepted, if you are a successful bidder, by debit card issued in the name of the Buyer by a UK bank and registered to a UK billing address; by all major UK issued credit cards issued in the name of the Buyer and registered to a UK billing address with the exception of Diners Club; by bank transfer direct into our bank account, Bank Details: NatWest, 30 Market Place, Newbury, Berkshire RG14 5AG. Account Name: Dreweatts 1759 Ltd. A/C: 62412949, Sort Code: 60-15-07, BIC: NWBKGB2L, IBAN: GB21NWBK60150762412949. The name of the bank account holder should match the name of the buyer. First time buyers who are not present at the saleroom are requested to pay by bank transfer.

12. **COLLECTION AND STORAGE.** Please note what the Conditions of Sale state about collection and storage. It is important that goods are paid for and collected promptly. Any delay may involve the buyer in paying storage charges.

13. **λ ARTIST'S RESALE RIGHT (DROIT DE SUITE) ROYALTY CHARGES.** Under Artist's Resale Right (ARR) UK art market professionals (including, but not limited to, auctioneers, art dealers and galleries) are required to collect a royalty for works of art produced by qualifying artists each time a work is resold during the artist's lifetime and for a period up to 70 years following the artist's death. This payment is only applicable to qualifying works of art when the hammer price reaches or exceeds £1,000. The charge is calculated on the portions of the hammer price according to the following rate bands:

Royalty Rate	Portion of the hammer
4%	up to £50,000
3%	between £50,000.01 and £200,000
1%	between £200,000.01 and £350,000
0.5%	between £350,000.01 and £500,000
0.25%	in excess of £500,000

The royalty charge is capped at £12,500 per artwork. All royalty charges are passed on, no handling costs or additional fees with respect to these charges will be retained by Dreweatts. The ARR charge is VAT exempt. All items in this catalogue that are marked with λ are potentially qualifying items. The charge will be added to the buyer's invoice and must be paid before items can be released to the buyer.

## TERMS OF CONSIGNMENT FOR SELLERS IN PUBLIC AUCTIONS

The sale of goods at our public auctions and a seller's relationship with us are governed by our Auction Terms and Conditions including these Terms of Consignment for Sellers in Public Auctions and our Conditions of Sale for Public Auctions. Any particular auction and/or any particular lot in an auction may be subject to different or additional terms which will be published in our auction catalogue or separately announced prior to the auction. All auctions and sales of wines and spirits, jewellery, watches and clocks are subject to the special terms set out in the relevant Notices in relation to those items published in our auction catalogue and, in the event of any conflict or inconsistency, those special terms prevail over any other terms in our Auction Terms and Conditions. Please note that our Auction Terms and Conditions including these Terms of Consignment for Sellers in Public Auctions and our Conditions of Sale for Public Auctions relate to auctions held in our salerooms and we have separate terms and conditions for our online auctions.

If you, or another person acting on your behalf, provide goods to us to sell on your behalf at one of our auctions this signifies that you agree to and will comply with our Auction Terms and Conditions including these Terms of Consignment for Sellers in Public Auctions and our Conditions of Sale for Public Auctions.

1. **INTERPRETATION.** In these Terms the words 'you', 'yours', etc. refer to the Seller and if the consignment of goods to us is made by an agent or otherwise on the Seller's behalf we assume that the Seller has authorised the consignment and that the consignor has the Seller's authority to contract. All obligations that apply to the Seller under these Terms of Consignment for Sellers in Public Auctions shall apply to the owner of the goods and their agent jointly and separately. Similarly the words 'we', 'us', etc. refer to the Auctioneers.

2. **WARRANTY.** The Seller warrants that possession in the lots can be transferred to the Buyer with good and marketable title, free from any third party right and encumbrances, claims or potential claims. The Seller has provided all information concerning the item's ownership, condition and provenance, attribution, authenticity, import or export history and of any concerns expressed by third parties concerning the same.

3. **ALL COMMISSIONS.** and fees are subject to VAT at the prevailing rate.

4. **COMMISSION.** is charged to sellers and all selling terms are available from our salerooms.

5. **REMOVAL COSTS.** Items for sale must be consigned to the saleroom by any stated deadline and at your expense. We may be able to assist you with this process but any liability incurred to a carrier for haulage charges is solely your responsibility.

6. **LOSS AND DAMAGE OF GOODS**

(a) Loss and Damage Warranty - Dreweatts is not authorised by the FCA to provide insurance to its clients, and does not do so. However Dreweatts for its own protection assumes liability for property consigned to it at the lower pre-sale estimate until the hammer falls. To justify accepting liability, Dreweatts makes a charge of 1.5% of the hammer price plus VAT, subject to a minimum charge of £1.50, or if unsold 1.5% of our lower estimate. The liability assumed by Dreweatts shall be limited to the lower pre-sale estimate or the hammer price if the lot is sold. Dreweatts is not liable for damage to gilded picture frames, plaster picture frames or picture frame glass; if the Lot is or becomes dangerous, we may dispose of it without notice to you in advance in any manner we see fit and will be under no liability for doing so.

(b) If the owner of the goods consigned instructs us in writing not to take such action, the goods then remain entirely at the owner's risk unless and until the property in them passes to the Buyer or they are collected by or on behalf of the owner, and clause 6 (a) is inapplicable.

7. **ILLUSTRATIONS AND PHOTOGRAPHS.** The cost of any illustrations or photographs is borne by you. The copyright in respect of such illustrations and photographs shall be the property of us, the auctioneers, as is the text of the catalogue.

8. **MINIMUM BIDS AND OUR DISCRETION.** Goods will normally be offered subject to a reserve agreed between us before the sale in accordance with clause 9. We may sell Lots below the reserve provided we account to you for the same sale proceeds as you would have received had the reserve been the hammer price. If you specifically give us a "discretion" we may accept a bid of up to 10% below the formal reserve.

9. **RESERVES**

(a) You are entitled to place prior to the auction a reserve on any lot consigned, being the minimum hammer price at which that lot may be sold. Reserves must be reasonable and we may decline to offer goods which in our opinion would be subject to an unreasonably high reserve (in which case goods carry the storage and loss and damage warranty charges stipulated in these Terms of Consignment).

(b) A reserve once set cannot be changed except with our consent.

(c) Where a reserve has been set which we consider unreasonably high, an unsold charge will be payable in the event that the lots fails to sell, being the agreed selling terms calculated on the reserve, LDW at 1.5% and any photographic charges.

(d) Where a reserve has been placed only we may bid on your behalf and only up to the reserve (if any) and you may in no circumstances bid personally.

(e) Reserves are not usually accepted for lots expected to realise below £100.

10. **ELECTRICAL ITEMS.** These are subject to detailed statutory safety controls. Where such items are accepted for sale you accept responsibility for the cost of

testing by external contractors. Goods not certified as safe by an electrician (unless antiques) will not be accepted for sale. They must be removed at your expense on your being notified. We reserve the right to dispose of unsafe goods as refuse, at your expense.

11. **SOFT FURNISHINGS.** The sale of soft furnishings is strictly regulated by statute law in the interests of fire safety. Goods found to infringe safety regulations will not be offered and must be removed at your expense. We reserve the right to dispose of unsafe goods as refuse, at your expense. The rights of disposal referred to in clause 10 and 11 are subject to the provisions of The Torts (Interference with Goods) Act 1977.

12. **DESCRIPTION.** Please assist us with accurate information as to the provenance, lawful import etc. of goods where this is relevant. There is strict liability for the accuracy of descriptions under modern consumer legislation and in some circumstances responsibility lies with sellers if inaccuracies occur. We will assume that you have approved the catalogue description of your lots and that your lots match those descriptions unless informed to the contrary. Where we are obliged to return the price to the buyer when the lot is a deliberate forgery under Condition 15 of the Conditions of Sale and we have accounted to you for the proceeds of sale you agree to reimburse us the sale proceeds and in any event within 7 days of our written notice to do so.

13. **UNSOLD.** If an item is unsold it may at our discretion be re-offered at a future sale. Where in our opinion an item is unsaleable you must collect such items from the saleroom promptly on being so informed. Otherwise, storage charges may be incurred. We reserve the right to charge for storage in these circumstances at a reasonable daily rate.

14. **WITHDRAWN AND BOUGHT IN ITEMS.** These are liable to incur a charge of 15% commission, 1.5 % Loss and Damage Warranty and any other costs incurred including but not limited to illustration and restoration fees all of these charges being subject to VAT on being bought in or withdrawn after being catalogued.

15. **CONDITIONS OF SALE.** You agree that all goods will be sold on our Conditions of Sale for Public Auctions. In particular you undertake that you have the right to sell the goods either as owner or agent for the owner with good and marketable title and free and clear of any third party rights or claims. You undertake to compensate us and any buyer or third party for all losses liabilities, costs and expenses suffered or incurred arising out of or in connection with any breach of this undertaking. We will also, at our discretion, and as far as practicable, confirm that an item consigned for sale does not appear on the Art Loss register, which is administered by an independent third party.

16. **DUE DILIGENCE CHECKS AND ANTI-MONEY LAUNDERING PROCEDURES.** Under the money laundering regulations in force we are required to carry out relevant due diligence checks. This includes verifying the identity of all customers we transact with as well as any beneficial owners on behalf of whom they may transact. Vendors who are unable to or refuse to supply required identification documents and proof of address will not be able to consign to Dreweatts auctions. Copies of customer due diligence checks will be stored for as long as it is necessary to satisfy legal requirements in an appropriate storage facility, which for the avoidance of doubt may include storage solely in electronic form. We reserve the right to withhold the monies owed until the vendor provides the information necessary to complete the anti-money laundering checks.

17. **AUTHORITY TO DEDUCT COMMISSION AND EXPENSES AND RETAIN PREMIUM AND INTEREST**

(a) You authorise us to deduct commission at the stated rate and all expenses incurred for your account from the hammer price and consent to our right to retain beneficially the premium paid by the buyer in accordance with our Conditions of Sale for Public Auctions and any interest earned on the sale proceeds until the date of settlement.

(b) In case of lots unsold at auction you authorise us at our discretion to reoffer such lots and negotiate a sale within seven days of the auction date, in which case the same charges will be payable as if such lots had been sold at auction and so far as appropriate these Terms apply.

18. **WAREHOUSING.** We disclaim all liability for goods delivered to our saleroom without sufficient sale instructions and reserve the right to make minimum warehousing charge of £10 per lot per day. Unsold lots are subject to the same charges if you do not remove them within a reasonable time of notification. If not removed within three weeks we reserve the right to sell them and defray charges from any net proceeds of sale or at your expense to consign them to the local authority for disposal.

19. **SETTLEMENT.** After sale settlement of the net sum due to you normally takes place within 28 days of the sale unless the buyer has not paid for the goods or the checks necessary under the current Money Laundering Regulations have not been completed. In this case no settlement will then be made but we will take your instructions in the light of our Conditions of Sale for Public Auctions. You authorise any sums owed by you to us on other transactions to be deducted from the sale proceeds. You must note the liability to reimburse the proceeds of sale to us as under the circumstances provided for in Condition 12 above. You should therefore bear this potential liability in mind before parting with the proceeds of sale until the expiry of 28 days from the date of sale.



# CONDITIONS OF SALE FOR PUBLIC AUCTIONS

Dreweatts carries on business with bidders, buyers and all those present in the auction room prior to or in connection with a sale by auction at our salerooms on our Auction Terms and Conditions or Public Auctions including these Conditions of Sale for Public Auctions and all bidders, buyers and others participating in a public auction accept that these terms apply to the exclusion of any terms and conditions contained in any of those person's own documents even if the same purport to provide that that person's own or some other terms prevail. Any particular public auction and/or any particular lot in an auction may be subject to different or additional terms which will be published in our online auction catalogue. Please note that our Auction Terms and Conditions including these Conditions of Sale for Public Auctions relate to auctions held in one of our salerooms and we have separate terms and conditions for our online auctions.

## 1. DEFINITIONS

In these Conditions:

(a) "auctioneer" means the firm of Dreweatts or its authorised auctioneer, as appropriate;

(b) "deliberate forgery" means an imitation made with the intention of deceiving as to authorship, origin, date, age, period, culture or source but which is unequivocally described in the catalogue as being the work of a particular creator and which at the date of the sale had a value materially less than it would have had if it had been in accordance with the description;

(c) "hammer price" means the level of bidding reached (at or above any reserve) when the auctioneer brings down the hammer;

(d) "terms of consignment" means the stipulated terms and rates of commission on which Dreweatts accepts instructions from sellers or their agents;

(e) "total amount due" means the hammer price in respect of the lot sold together with any premium, Value Added Tax chargeable and any additional charges payable by a defaulting buyer under these Conditions;

(f) "sale proceeds" means the net amount due to the seller, being the hammer price of the lot sold less commission at the stated rate, Value Added Tax chargeable and any other amounts due to us by the seller in whatever capacity and however arising;

(g) "You", "Your", etc. refer to the buyer as identified in Condition 2.

(h) The singular includes the plural and vice versa as appropriate.

## 2. BIDDING PROCEDURES AND THE BUYER

(a) Bidders are required to register their particulars before bidding by completing a sale registration form and to satisfy any security arrangements before entering the auction room to view or bid;

(b) Under the money laundering regulations in force we are required to verify the identity of all customers we transact with as well as any beneficiaries on behalf of whom they may transact. Customers who are unable to or refuse to supply required identification documents and proof of address will not be able to bid in Dreweatts auctions. Copies of customer due diligence checks will be stored for as long as it is necessary to satisfy legal requirements in an appropriate storage facility which for the avoidance of doubt may include storage solely in electronic form;

(c) the maker of the highest bid accepted by the auctioneer conducting the sale shall be the buyer at the hammer price and any dispute about a bid shall be settled at the auctioneer's absolute discretion by reoffering the Lot during the course of the auction or otherwise. The auctioneer shall act reasonably in exercising this discretion.

(d) Bidders shall be deemed to act as principals;

(e) Our right to bid on behalf of the seller is expressly reserved up to the amount of any reserve and the right to refuse any bid is also reserved.

3. **INCREMENTS.** Bidding increments shall be at the auctioneer's sole discretion.

4. **THE PURCHASE PRICE.** The buyer shall pay the purchase price together with a premium thereon of 30% which shall include VAT on the premium at the rate imposed by law. The buyer will also be liable for any royalties payable under Droit de Suite as set out under Information for Buyers.

5. **VALUE ADDED TAX.** Value Added Tax on the hammer price is imposed by law on all items affixed with a dagger (†) or double dagger (‡). Value Added Tax is charged at the appropriate rate prevailing by law at the date of sale and is payable by buyers of relevant Lots. (Please refer to "Information for Buyers" for a brief explanation of the VAT position).

## 6. PAYMENT

(a) Immediately a Lot is sold you will:

(i) give to us, if requested, proof of identity, and

(ii) pay to us the total amount due or in such other way as is agreed by us.

(b) Any payments by you to us may be applied by us towards any sums owing from you to us on any account whatever without regard to any directions of you or your agent, whether expressed or implied.

(c) In order to comply with money laundering regulations we reserve the right to require proof of source of funds and/ or confirmation of the nature and source of wealth for all receipts of monies from clients directly or from third parties for payments on behalf of clients. Lots will only be released once we have completed necessary checks under the current Money Laundering Regulations.

## 7. TITLE AND COLLECTION OF PURCHASES

(a) The ownership of any Lots purchased shall not pass to you until you have made payment in full to us of the total amount due.

(b) You shall at your own risk and expense take away any lots that you have purchased and paid for not later than 3 working days following the day of the auction after which you shall be responsible for any removal, storage and insurance charges.

(c) No purchase can be claimed or removed until it has been paid for and we have completed necessary checks under the current Money Laundering Regulations.

## 8. REMEDIES FOR NON-PAYMENT OR FAILURE TO COLLECT PURCHASES

(a) If any Lot is not paid for in full and taken away in accordance with these Conditions or if there is any other breach of these Conditions, we, as agent for the seller and on our own behalf, shall at our absolute discretion and without prejudice to any other rights we may have, be entitled to exercise one or more of the following rights and remedies:

(i) to proceed against you for damages for breach of contract;

(ii) to rescind the sale of that Lot and/or any other Lots sold by us to you;

(iii) to resell the Lot (by auction or private treaty) in which case you shall be responsible for any resulting deficiency in the total amount due (after crediting any part payment and adding any resale costs). Any surplus so arising shall belong to the seller;

(iv) to remove, store and insure the Lot at your expense and, in the case of storage, either at our premises or elsewhere;

(v) to charge interest at a rate not exceeding 1.5% per month on the total amount due to the extent it remains unpaid for more than 3 working days after the sale;

(vi) to retain that or any other Lot sold to you until you pay the total amount due;

(vii) to reject or ignore bids from you or your agent at future auctions or to impose conditions before any such bids shall be accepted;

(viii) to apply any proceeds of sale of other Lots due or in future becoming due to you towards the settlement of the total amount due and to exercise a lien (that is a right to retain possession of) any of your property in our possession for any purpose until the debt due is satisfied.

(b) We shall, as agent for the seller and on our own behalf pursue these rights and remedies only so far as is reasonable to make appropriate recovery in respect of breach of these conditions.

9. **THIRD PARTY LIABILITY.** All bidders, buyers and other members of the public on our premises are there at their own risk and must note the lay-out of the accommodation and security arrangements. Accordingly neither the auctioneer nor our employees or agents shall incur liability for death or personal injury or for the safety of the property of persons visiting prior to or at a sale (except in each case as may be required by law by reason of our negligence)

10. **COMMISSION BIDS.** Whilst prospective buyers are strongly advised to attend the auction and are always responsible for any decision to bid for a particular Lot and shall be assumed to have carefully inspected and satisfied themselves as to its condition, we will if so instructed clearly and in writing execute bids on their behalf. Neither the auctioneer nor our employees or agents shall be responsible for any failure to do so.

Where two or more commission bids at the same level are recorded we reserve the right in our absolute discretion to prefer the first bid so made.

11. **WARRANTY OF TITLE AND AVAILABILITY.** The seller warrants to the auctioneer and you that the seller is the true owner of the property consigned or is properly authorised by the true owner to consign for sale and is able to transfer good and marketable title to the property free from any third party claims.

Save as expressly set out above, all other warranties, conditions or other terms which might have effect between the Seller and you, or us and you, or be implied or incorporated by statute, common law or otherwise are excluded to the fullest extent permitted by law.

12. **AGENCY.** The auctioneer normally acts as agent only and disclaims any responsibility for default by sellers or buyers.

13. **TERMS OF SALE.** The seller acknowledges that Lots are sold subject to the stipulations of these Conditions in their entirety and on the Terms of Consignment for Public Auctions as notified to the consignor at the time of the entry of the Lot.

## 14. DESCRIPTIONS AND CONDITION

(a) Whilst we seek to describe lots accurately, it may be impractical for us to carry out exhaustive due diligence on each lot. Prospective buyers are given ample opportunities to view and inspect before any sale and they (and any independent experts on their behalf) must satisfy themselves as to the accuracy of any description applied to a lot. Prospective buyers also bid on the understanding that, inevitably, representations or statements by us as to authorship, genuineness, origin, date, age, provenance, condition or estimated selling price involve matters of opinion. We undertake that any such opinion shall be honestly and reasonably held and accept liability for opinions given negligently or fraudulently. Subject to the foregoing neither we the auctioneer nor our employees or agents nor the seller accept liability for the correctness of such opinions and all conditions and warranties, whether relating to description, condition or quality of lots, express, implied or statutory, are hereby excluded. Dreweatts is not liable for damage to gilded picture frames, plaster picture frames or picture frame glass; if the Lot is or becomes dangerous, we may dispose of it without notice to you in advance in any manner we see fit and will be under no liability for doing so. This Condition is subject to the next following Condition concerning deliberate forgeries and applies save as provided for in paragraph 6 "information to buyers".

(b) Private treaty sales made under these Conditions are deemed to be sales by auction for purposes of consumer legislation.

15. **FORGERIES.** Notwithstanding the preceding Condition, any Lot which proves to be a deliberate forgery (as defined) may be returned to us by you within 21 days of the auction provided it is in the same condition as when bought, and is accompanied by particulars identifying it from the relevant catalogue description and a written statement of defects. If we are satisfied from the evidence presented that the Lot is a deliberate forgery we shall refund the money paid by you for the Lot including any buyer's premium provided that (1) if the catalogue description reflected the accepted view of scholars and experts as at the date of sale or (2) you personally are not able to transfer a good and marketable title to us, you shall have no rights under this condition.

The right of return provided by this Condition is additional to any right or remedy provided by law or by these Conditions of Sale.

16. **PRIVACY NOTICE.** We will hold and process any personal data in relation to you in accordance with our current privacy policy, a copy of which is available on our website [www.dreweatts.com/privacy-policy/](http://www.dreweatts.com/privacy-policy/).

## GENERAL

17. We shall have the right at our discretion, to refuse admission to our premises or attendance at our auctions by any person.

18. (a) Any right to compensation for losses liabilities and expenses incurred in respect of and as a result of any breach of these Conditions and any exclusions provided by them shall be available to the seller and/or the auctioneer as appropriate.

(b) Such rights and exclusions shall extend to and be deemed to be for the benefit of employees and agents of the seller and/or the auctioneer who may themselves enforce them.

19. Any notice to any buyer, seller, bidder or viewer may be given by first class mail, email or Swiftmail in which case it shall be deemed to have been received by the addressee 48 hours after posting.

20. Special terms may be used in catalogue descriptions of particular classes of items in which case the descriptions must be interpreted in accordance with any glossary appearing at the commencement of the catalogue.

21. Any indulgence extended to bidders, buyers or sellers by us notwithstanding the strict terms of these Conditions or of the Terms of Consignment shall affect the position at the relevant time only and in respect of that particular concession only; in all other respects these Conditions shall be construed as having full force and effect.

22. These Conditions shall be governed by and construed in accordance with English law and the parties irrevocably submit to the exclusive jurisdiction of the English courts.

# DREWEATTS

## NEWBURY

Dreweatts  
Donnington Priory  
Newbury  
Berkshire RG14 2JE  
+44 (0) 1635 553 553  
[info@dreweatts.com](mailto:info@dreweatts.com)

## MANAGING DIRECTOR

Vicki Wonfor

## CHAIRMAN

Will Richards

## DEPUTY CHAIRMAN

James Nicholson

## LONDON

Dreweatts / Bloomsbury Auctions  
16-17 Pall Mall  
St James's  
London SW1Y 5LU  
+44 (0) 20 7839 8880  
[info@bloomsburyauctions.com](mailto:info@bloomsburyauctions.com)  
[info@dreweatts.com](mailto:info@dreweatts.com)

## HAMBRIDGE LANE

Dreweatts  
1 Hambridge Lane  
Newbury  
Berkshire RG14 5TU  
+44 (0) 1635 553 553  
[info@dreweatts.com](mailto:info@dreweatts.com)

# GROUP DEPARTMENTS

## AUTOGRAPHS AND EPHEMERA

Ania Hanrahan  
[ahanrahan@dreweatts.com](mailto:ahanrahan@dreweatts.com)

## ASIAN CERAMICS AND WORKS OF ART

Mark Newstead  
Dr Yingwen Tao  
Lavinia Jin  
[asian@dreweatts.com](mailto:asian@dreweatts.com)

## BLOOMSBURY AUCTIONS BOOKS

### AND MANUSCRIPTS

Rupert Powell  
Dido Arthur  
Justin Phillips  
Max Hasler  
Richard Caroll  
[info@bloomsburyauctions.com](mailto:info@bloomsburyauctions.com)

## BRITISH AND EUROPEAN CERAMICS

### AND GLASS

Mark Newstead  
Geoffrey Stafford Charles  
[interiors@dreweatts.com](mailto:interiors@dreweatts.com)

## BRITISH AND EUROPEAN SCULPTURE

### AND WORKS OF ART

Silas Currie Leigh-Wood  
[sculpture@dreweatts.com](mailto:sculpture@dreweatts.com)

## CLOCKS AND SCIENTIFIC INSTRUMENTS

Leighton Gillibrand  
[clocks@dreweatts.com](mailto:clocks@dreweatts.com)

## COUNTRY SPORTING

Geoffrey Stafford Charles  
[gscharles@dreweatts.com](mailto:gscharles@dreweatts.com)

## FURNITURE AND CARPETS

Ben Brown  
Elaine Binning  
Ashley Matthews  
William Turkington  
Mitchell Tompkins  
[furniture@dreweatts.com](mailto:furniture@dreweatts.com)

## HOUSE SALES AND PRIVATE COLLECTIONS

Joe Robinson  
Peter Horwood  
Eloise Kerr-Smiley  
Arabella Methuen  
[housesales@dreweatts.com](mailto:housesales@dreweatts.com)

## JEWELLERY, SILVER, WATCHES AND OBJECTS

### OF VERTU

James Nicholson  
Charlotte Peel  
Nick Mann  
Tessa Parry  
[jsw@dreweatts.com](mailto:jsw@dreweatts.com)

## LIVE STEAM AND MODEL ENGINEERING

### WORKS OF ART

Lucie Hobbs  
[transport@dreweatts.com](mailto:transport@dreweatts.com)

## MODERN AND CONTEMPORARY ART

Jennie Fisher  
Francesca Walsh  
Will Porter (Business Development)  
Anastasia Fedoseeva  
[pictures@dreweatts.com](mailto:pictures@dreweatts.com)

## MODERN DESIGN AND DECORATIVE ART

Gemma Sanders  
Geoffrey Stafford Charles  
Ashley Matthews  
Luke McGurk  
[design@dreweatts.com](mailto:design@dreweatts.com)

## OLD MASTER, BRITISH AND

### EUROPEAN ART

Brandon Lindberg  
Lucy Darlington  
Daniele Amesso  
Isabelle Rietkerk  
[pictures@dreweatts.com](mailto:pictures@dreweatts.com)

## WINE

Mark Robertson  
Violette Jongbloed  
[wine@dreweatts.com](mailto:wine@dreweatts.com)

## CONSIGNMENT MANAGEMENT

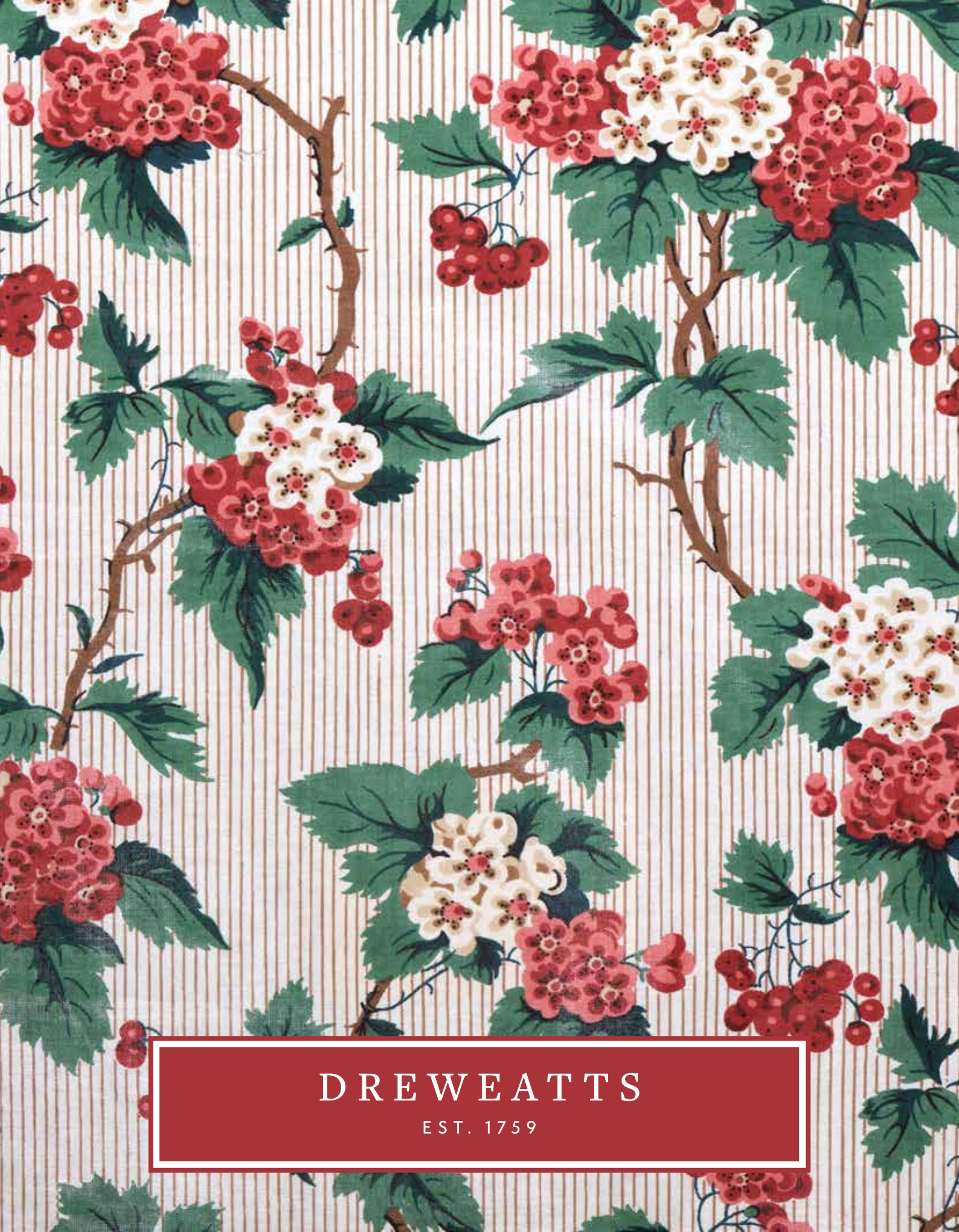
Lucie Hobbs  
Christy Chambers  
[consignments@dreweatts.com](mailto:consignments@dreweatts.com)

## VALUATIONS FOR PROBATE,

### INSURANCE AND CGT

Emma Terry  
Janice Clift  
[valuations@dreweatts.com](mailto:valuations@dreweatts.com)





DREWEATTS

EST. 1759