

FINE SILVER & OBJECTS OF VERTU

WEDNESDAY 19 FEBRUARY 2025 | NEWBURY



DREWEATTS

EST. 1759



FINE SILVER & OBJECTS OF VERTU

WEDNESDAY 19 FEBRUARY 2025 | NEWBURY

LOTS 1-237 | 10.30AM

VIEWING IN LONDON (HIGHLIGHTS)

Tuesday 4 February: 10am–4pm

Wednesday 5 February: 10am–4pm

VIEWING IN NEWBURY (FULL SALE)

Friday 14 February: 10am–4pm

Sunday 16 February: 10am–3pm

Monday 17 February: 10am–4pm

Tuesday 18 February: 10am–4pm

SPECIALISTS

James Nicholson FGA, DGA

Charlotte Peel GG

Nick Mann

Tessa Parry FGA, DGA

Ian Pickford (Consultant, Silver)

ENQUIRIES & CONDITION REPORTS

jsw@dreweatts.com

Front cover: Lot 124

Inside front cover: Lots 226, 231, 232, 233, 234, 236 & 237

Back cover: Lots 222, 223, 225, 227, 229 & 230

Catalogues £15 (£20 by post)

NEWBURY

Donnington Priory, RG14 2JE

+44 (0) 1635 553 553

LONDON

16-17 Pall Mall, SW1Y 5LU

+44 (0) 20 7839 8880

info@dreweatts.com

dreweatts.com

DREWEATTS

EST. 1759



REGISTRATION AND BIDDING

We advise bidders to register at least 48 hours in advance of the auction as we will need to complete Know Your Client checks on all registrants. We allow commission (or absentee bids), telephone bids, live online bidding, and in person bidding. More information is available in our Terms of Sale at the back of this catalogue, and on our website.

BUYER'S PREMIUM

26% of hammer price up to £20,000 (31.2% including VAT), plus

25% of hammer price from £20,001 up to £500,000 (30% including VAT), plus

20% of hammer price from £500,001 up to £1,000,000 (24% including VAT), plus

12.5% of hammer price in excess of £1,000,000 (15% including VAT)

ADDITIONAL CHARGES AND SYMBOLS

λ - Indicates that this lot may be subject to Droit de Suite (Artist Resale Right) royalty charges.

Y - Indicates that this lot may be subject to CITES regulations when exported.

† - Indicates that VAT is payable by the purchaser at the standard rate of 20% on the hammer price as well as being charged on the buyer's premium.

θ - Indicates that the lot is a zero rated item and therefore subject to buyer's premium of 26% exclusive of VAT (0% VAT).

‡ - Indicates that the lot is being sold whilst subject to temporary importation and that VAT is due at the reduced rate (5%).

Ω - Indicates that the lot has been imported from outside the UK and is liable to the standard rate of Import VAT currently 20% on the hammer price.

β - Indicates that the lot is offered in Bond. This applies to wine. Bidding will be at duty paid prices other than for those lots marked 'IN BOND/β'.

PAYMENT

If you are successful, you will receive an invoice to your registered email address, which will include detailed payment and collection information. If you wish to see this in advance, please visit our website. Items must be paid for in full and Know Your Client checks must be complete before we can release any purchases; first time buyers may also be subject to restrictions on the methods of payment we can accept. Please confirm this with the saleroom prior to collection.

COLLECTIONS, SHIPPING AND STORAGE

Unless otherwise stated below, purchases are available for collection from Dreweatts Donnington Priory salerooms from Monday to Friday (9am-5pm) by appointment only. If you wish to have the item shipped to you, please see the list of suggested shippers on our website.

Due to a busy schedule of sales, we are unable to store sold items at the salerooms; any items not collected after 4 working days of the sale (by 4pm) are removed to commercial storage and subject to a storage charge of £20 (plus VAT) per lot as well as a further storage charge of £3 (plus VAT) per lot per day thereafter. Please note for large consignments there may be additional charges. These charges will be the sole liability of the purchaser and will be billed directly to them by Sackville-West Moving & Storing. On payment of all sales and storage costs, items will be available for collection by appointment from Sackville-West Moving & Storing (Andover SP10 3SA).

CONDITIONS OF SALE

Any registration to bid is subject to acceptance of our Auction Terms and Conditions and Privacy Policy. Both are available on our website.

CONDITION OF ITEMS

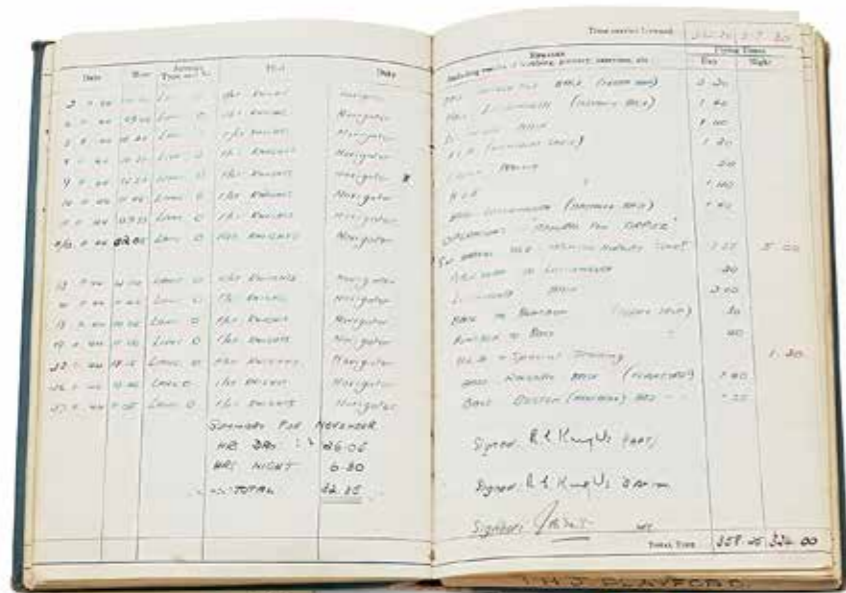
Buyers must satisfy themselves to the condition of any item prior to bidding. Detailed condition reports and additional images are available upon request.

EXPORT OF ITEMS

If you intend to export goods out of the UK, we ask you to satisfy yourselves as to whether there is prohibition on exporting goods of that character e.g. if the goods contain prohibited materials such as ivory or they require an Export Licence on the grounds of exceeding a specific age and/or monetary value threshold as set by the Export Licensing unit. We are happy to make the submission of necessary applications on behalf of our buyers, but we will charge for this service only to cover the costs of our time.

GLOSSARY OF TERMS

Where relevant, for example Picture auctions or Clocks auctions, a glossary of cataloguing terms will be available at the back of our printed catalogues as well as via our website.



1
SECOND WORLD WAR
A DISTINGUISHED FLYING CROSS
GROUP OF FOUR

Awarded to Flight Lieutenant Terence H J Playford, Royal Canadian Air Force, comprising: Distinguished Flying Cross dated 1945, 1939-45 star, Air Crew Europe star with clasp France and Germany, 1939-45 Medal, together with Playford's log book, miniatures, Buckingham Palace pro forma award notification from H.M. King George VI, associated ribbons and DFC case from the Royal Mint.

Flt.Lt. Terence Henry John Playford served as a navigator with 617 Squadron, and was among a number of Canadian Royal Air Force men who flew with the famous 'dambusters' squadron. His DFC award was gazetted on 12th January 1945 in recognition of his part in the Lancaster bomber attacks on the German battleship Tirpitz.

£2,000-3,000



1



2

2
ROYAL SCOTS GREYS, A PAIR
OF EDWARDIAN SCOTTISH
REGIMENTAL MENU HOLDERS
WILSON & SHARP, EDINBURGH 1907

In the form of the regiment's emblems of an eagle with outspread wings and a cavalry horse around the regiment's motto

9cm (3 1/2in) long
 99g (3.2 oz)

£80-120

3
A VICTORIAN SILVER NOVELTY MENU HOLDER
MAKER'S MARK CC, BIRMINGHAM 1897

In the form of a golfer swinging a golf club
 5cm (2in) high
 46g (1.5 oz)

£80-120



3

4
NO. 3 (MADRAS) FIELD BATTERY "THE DUKE'S OWN", A VICTORIAN INDIAN SILVER
MOUNTED REGIMENTAL INKSTAND
ORR, PETER & SONS, MADRAS 1880

With an applied central armorial and motto, flanked by two rectangular inkwells with coronet covers, fused grenade terminals to the corners, a pen tray and the drawer engraved 'His grace the Duke of Buckingham & Chandos G.C.S.I. C.I.E, a souvenir from J. G. Coleman, Major, commanding Duke's own volunteer artillery, Madras November 1880
 34cm (13 1/2in) long
 515g (16.55 oz) weighable

£1,000-1,500



4

5
COLDSTREAM GUARDS, A SILVER TWIN
HANDLED TRAY
CARRINGTON & CO., LONDON 1912

With twin loop handles, a raised moulded border and engraved with a presentation inscription and the regiment's insignia
 70cm (27 1/2in) long
 4652g (149.55 oz)

£1,500-2,500



5



6

6
A CASED PAIR OF SILVER GILT ANOINTING SPOONS
 WAKELY & WHEELER, LONDON 1910,
 ONE OVERSTRUCK WITH GOLDSMITHS &
 SILVERSMITHS CO. LTD
 26cm (10 1/4in) long
 205g (6.6 oz)

£100-150

7
A SILVER SHAPED OVAL PIERCED BOWL
 JOHN ROUND & SON LTD.,
 SHEFFIELD 1918
 Pierced with foliate swags and on
 four pad feet
 28.5cm (11 1/4in) long
 574g (18.5 oz)

Provenance:
 The Estate of a deceased Gentleman

£200-300



7



8

8
A SILVER OVAL LOBED BALUSTER KETTLE ON STAND
 WALKER & HALL, SHEFFIELD 1913
 With a wooden bell shaped finial and loop handle, above a
 burner and on four paw feet
 35cm (13 3/4in)
 1297g (41.7 oz) gross

£400-600

9
A SILVER OCTAGONAL PEDESTAL BOWL
 WALKER & HALL, SHEFFIELD 1927
 With a pierced floral gallery and on an octagonal
 pedestal foot
 22.5cm (9in) wide
 398g (12.8 oz)

Provenance:
 The Estate of a deceased Gentleman

£150-250



9



10

10
AN IRISH SILVER AND AMETHYST MOUNTED QUACH
 WAKELY & WHEELER,
 DUBLIN 1913
 The twin scrolled handles inset
 with circular cut amethysts and
 applied with dolphins, the centre
 with a Celtic emblem and on
 four mythical creature feet
 37.5cm (14 3/4in) long

Together with a matching pair
 of silver and amethyst mounted
 vases by Finnigans Ltd., Dublin
 1914, with a Celtic border, twin
 scroll beaded and dolphin
 handles, circular cut amethysts
 to scrolled panels, to circular
 bases and on four shell feet,
 25.5cm (10in) high
 2375g (76.35 oz) gross

£800-1,200

11
AN AMERICAN SILVER SHAPED CIRCULAR TRAY
 GORHAM, CIRCA 1920
 With a cast foliate border and two
 vacant cartouches
 37cm (14 1/2in) diameter
 1158g (37.25 oz)

£350-450



11



12

12
A SET OF FOUR VICTORIAN SILVER COASTERS
 EDWARD FARRELL, LONDON 1840 (2) AND 1842 (2)
 With gadrooned borders, pierced foliate scroll bodies, the centres engraved with a trellis and C-scroll band and a crest
 14cm (5 1/2in) diameter
 With wood bases

The arms associated with the engraved crest appear to belong to: the WELBY family of Welby, Lincolnshire; the Irish family of O'BRIEN; and DOUGLAS family of Tillwhilly co. Kincardine, Scotland

£3,000-5,000

13
A GOLD AND ENAMELLED KNIFE AND FORK IN THE 17TH CENTURY STYLE
 UNMARKED, 19TH CENTURY
 The dragon head terminals with diamond set eyes and champlevé enamel, steel blade and tines
 20cm long

Provenance:
 Private Collection
 Sale: Sotheby's. Treasures from the Rothschild Collection: Property of the late Nathaniel Mayer Victor, 3rd Lord Rothschild, 12th December 2003, Lot 37

£1,000-1,500



13

14
A VICTORIAN SCOTTISH SILVER SHAPED CIRCULAR SALVER
 JAMES MCKAY, EDINBURGH 1840
 With a chased scroll and foliate border, engraved with a foliate and floral swag band, an armorial and on three foliate swag feet
 29.5cm (11 1/2in) diameter
 750g (24.15 oz)

These appear to be a differenced form of the arms, crest and motto of the RICHARDSON family of Mid Lothian and later Edinburgh.

£400-600



14



15

15
A PAIR OF VICTORIAN SILVER CHAMBERSTICKS
 CHARLES FOX II, LONDON 1839
 Of circular form, petal sconces, marked underneath and to extinguisher and sconce
 15.8cm diameter
 750g (24.1oz)

Provenance:
 Purchased: Marks Fine Antique Silver, London, August 2001
 The Estate of a deceased Gentleman

£400-600

16
A VICTORIAN SILVER BALUSTER TEA POT
 BENJAMIN SMITH II, LONDON 1849
 With ivory warming bands to the scroll handle, chased with foliage and lattice decoration, engraved with two crests above a monogram
 21.5cm (8 1/2in) long
 432g (13.9 oz) gross

Please note Dreweatts have applied for a de minimis exemption licence for the ivory in this lot Ref: 5ATJKAHS

£150-250

17
A VICTORIAN SILVER COFFEE POT
 BENJAMIN PRESTON, LONDON 1844
 With a flower finial to the domed cover, ivory warming bands to the scroll handle, engraved with a crest and on four shell and scroll feet
 23.5cm (9 1/4in) high

Please note Dreweatts have applied for a de minimis exemption licence for the ivory in this lot Ref: K9Z3J37V

£300-500



16



17



18

18
A GEORGE I SILVER SUGAR BOWL AND COVER
WILLIAM FLEMING, LONDON 1715
With a pull off cover and on a circular moulded spreading pedestal foot
The cover 11.5cm (4 1/2in) diameter
203g (6.55 oz)

£800-1,200



19

19
A GEORGE II SILVER COFFEE POT
AYMÉ VIDEAU, LONDON 1743
With a bell shaped finial to the ogee domed cover, a wooden scroll handle and on a circular moulded spreading foot, engraved EW beneath
23cm (9in) high
767g (24.65 oz) gross

£1,000-1,500



20

20
A GEORGE II SILVER GLOBULAR KETTLE ON STAND
JOHN CHARTIER, LONDON 1732
With a wooden circular finial and a swing loop handle, engraved with strapwork and an armorial, the shaped circular stand above a burner, on three scroll legs and pad feet
31cm (12 1/4in) high
1622g (52.15 oz) gross

£800-1,200



21

21
A GEORGE II IRISH SILVER BULLET SHAPED TEAPOT
MAKER'S MARK OBSCURED, DUBLIN 1732
With a wooden domed finial and loop handle, engraved with an armorial
24cm (9 1/2in) long
529g (17 oz) gross

£2,500-3,500



22
A SET OF THREE FRENCH SILVER GRADUATED CIRCULAR PLATES
 JOHN BAPTISTE CLAUDE ODIOT,
 PARIS 1809-1819 .950 STANDARD
 With nulled borders
 25cm (9 3/4in), 30cm (11 3/4in) and
 38cm (15in) diameter
 3047g (97.95 oz)

£1,000-1,500

23
A GEORGE III SILVER OVAL TEA CADDY
 THOMAS HAYTER, LONDON 1805
 With a wooden pineapple finial to the domed cover, engraved
 with foliate bands and a crest within an oval reserve
 17cm (6 3/4in) high
 With a wood liner

£300-500



24
A MALTESE SILVER TEA POT
 GIOACCHINO LEBRUN, 1810-1820 MARK
 With an orb finial to the lobed domed cover, a wicker
 wrapped harp handle, a half lobed body and on four
 bun feet
 19cm (7 1/2in) long
 398g (12.8 oz) gross

£800-1,200



24

25
A PAIR OF GEORGE III SILVER BOTTLE COASTERS
 REBECCA EMES &
 BARNARD, LONDON 1809
 With lobed borders,
 pierced and chased with
 grape vine bands
 16cm (6 1/4in) diameter
 With turned wood bases

£600-800



25



26
A GEORGE IV SILVER OBLONG CHEESE WARMING DISH
 REBECCA EMES & EDWARD BARNARD I,
 LONDON 1820
 With a detachable wooden handle, a lobed
 domed finial to the ogee domed and lobed
 cover, engraved with two crests, a gadrooned
 border with shells and foliage at intervals
 25cm (9 3/4in) long
 1083g (34.8 oz)

The crests for JOHNS(T)ON(E) and
 KIRKPATRICK.

£800-1,200

26

27
A GEORGE III SILVER SHAPED CIRCULAR SILVER
 MAKER'S MARK W.T, LONDON 1817
 With a beaded border with flower heads at
 intervals, engraved with a floral band and
 an armorial, on three pad feet
 20cm (8in) diameter
 409g (13.15 oz)

£150-250



27



28

28
AN INDIAN SILVER PIERCED LOBED CIRCULAR BOX
 UNMARKED
 With a flower finial to the domed cover, pierced with flower heads, twin swing loop handles and on three foliate bracket feet
 31cm (12in) diameter
 2332g (75 oz)

Provenance:
 Private Collection

£600-800



29

29
A BURMESE SILVER BOWL
 UNMARKED
 Chased with a band of the signs of the zodiac, bands of figures and birds within oval panels, the base with a winged elephant
 28cm (11in) diameter
 1749g (56.2 oz)

Provenance:
 Private Collection

£600-800



30

30
A BURMESE SILVER BOWL
 UNMARKED
 Chased with foliate bands and a hunting scene, the base engraved with a peacock
 18cm (7in) diameter
 634g (20.4 oz)

£600-800



32

32
A BURMESE SILVER BOWL
 UNMARKED
 Chased with a band of figures to a pierced and engraved foliate ground
 25cm (9 3/4in) diameter
 1215g (39.1 oz)

Provenance:
 Private Collection

£500-800



33

33
A BURMESE SILVER OFFERING BOWL
 EARLY 20TH CENTURY
 Chased with figures, birds and foliage, the base with a peacock
 26cm (10in) diameter
 1430g (46 oz)

£500-700



31

31 Y
A CASED CHINESE SILVER FOUR PIECE TEA SET
 MAKER'S MARK KC (NOT TRACED), CANTON CIRCA 1890
 The tea pot with a bamboo finial to the domed cover, a bamboo scroll handle with ivory bands, engraved and applied with floral decoration
 21cm (8 1/4in) long
 857g (27.55 oz) gross

Please note Dreweatts have applied for a de minimis exemption licence for the ivory in this lot Ref: 34P7S7HH

£800-1,200



35

34 (NO LOT)

35
A HUNGARIAN SILVER SHAPED CIRCULAR PLATE
 1937-1965 .900 STANDARD MARK
 With a chased C-scroll and flower border
 30.5cm (12in) diameter
 565g (18.15 oz)

Provenance:
 The Estate of a deceased Gentleman

£200-300

36
A SILVER FOUR PIECE TEA AND COFFEE SERVICE AND TRAY
 ELKINGTON & CO., BIRMINGHAM 1938 (1) AND 1939
 The tea and coffee pot with wooden finials and loop handles,
 chased foliate borders and tapering bodies
 18.5cm (7 1/4in) high
 The tray 42cm (16 1/2in) long
 2090g (67.2 oz) gross

£700-1,000



36

37
A SET OF EIGHTEEN SILVER SHELL AND THREAD PATTERN FISH KNIVES AND FORKS
 WILLIAM YATES, SHEFFIELD 1985
 The forks 19.5cm (7 3/4in) long, the knives 22cm (8 3/4in) long
 Loaded

£300-500

38
A SILVER SWING HANDLED PIERCED SHAPED CIRCULAR BASKET
 LANCELOT & HALL LTD., BIRMINGHAM 1961
 With a pierced loop handle, pierced scroll decoration and on three ball feet
 19cm (7 1/2in) diameter
 238g (7.65 oz)

Provenance:
 The Estate of a deceased Gentleman

£100-150



38



37 (part lot)

39
A PAIR OF SILVER CANDLESTICKS WITH ASSOCIATED THREE LIGHT BRANCHES
 THE BASES TAITE & SONS, LONDON 1947, THE BRANCHES HARRODS LTD., LONDON 1959
 With three reel capitals to three scroll arms, tapering stems to octagonal bases
 37cm (14 1/2in) high
 3113g (100.05 oz) gross

Provenance:
 The Estate of a deceased Gentleman

£800-1,200



39



40

40
A SET OF FOUR WILLIAM IV CAULDRON SALTS
 MATTHEW BOULTON, BIRMINGHAM 1830
 With gadrooned borders and on four foliate and lion paw feet
 9cm (3 1/2in) diameter

Together with four George IV fiddle and thread pattern spoons by William Johnson, London 1825, engraved with a crest, 11.5cm (4 1/2in) long 596g (19.15 oz) gross

£400-600

41
A SET OF TEN SILVER OLD ENGLISH PATTERN TABLE AND DESSERT SPOONS
 DOUBLE STAMPED L.A ONLY
 Four dessert spoons engraved with a monogram
 The table spoons 21.5cm (8 1/2in) long, the dessert spoons 18cm (7in) long
 1218g (39.15 oz)

£400-600



41



42

42 Y
A GEORGE IV SILVER CIRCULAR TEA POT
 CHARLES FOX II, LONDON 1829
 With a melon finial to the domed cover, ivory warming bands to the loop handle
 27.5cm (10 3/4in) long
 526g (16.9 oz) gross

Please note Dreweatts have applied for a de minimis exemption licence for the ivory in this lot Ref: F97ZMMYB

£200-300

43
A WILLIAM IV SILVER CIRCULAR TEA POT AND SUGAR BOWL
 EDWARD, EDWARD JUNIOR, JOHN & WILLIAM BARNARD, LONDON 1831
 The sugar bowl with twin leaf capped scroll handles, engraved with an armorial and on four scroll feet
 The sugar bowl 23cm (9in) long, the cream jug 17cm (6 3/4in) long
 592g (19.05 oz)

£200-300



43



44

44 Y
A VICTORIAN SILVER SHAPED CIRCULAR TEA POT
 JOSEPH & ALBERT SAVORY, LONDON 1838
 With a flower finial to the domed cover, a leaf capped loop handle with ivory warming bands, engraved with foliage and on four foliate feet
 29cm (11 1/2in) long
 743g (23.9 oz)

Please note Dreweatts have applied for a de minimis exemption licence for the ivory in this lot Ref: 6KFZHQVR

£250-350

45 Y
A WILLIAM IV SILVER LOBED CIRCULAR FOUR PIECE TEA SET
 EDWARD, EDWARD JUNIOR, JOHN & WILLIAM BARNARD, LONDON 1831
 The tea pot with a flower finial to the domed cover, a leaf capped loop handle with ivory warming bands, chased with floral bands and on four shell feet
 21.5cm (8 1/2in) long
 1151g (37 oz) gross

Please note Dreweatts have applied for a de minimis exemption licence for the ivory in this lot Ref: Z94CMDFB

£400-600



45



46

46
A SET OF FOUR GEORGE III SILVER OVAL SALTS
 JOHN YOUNGE & CO., SHEFFIELD 1780
 With beaded borders, pierced and engraved with scroll bands and on four ball and claw feet
 8.5cm (3 1/4in) long
 194g (6.25 oz)
 With four blue glass liners

£100-150



47

47
A GEORGE III SILVER OVAL SAUCE BOAT
 JOHN LANGLANDS I & JOHN ROBERTSON I, NEWCASTLE 1783
 With a leaf capped flying scroll handle, gadrooned border, engraved with a crest and on three shell and stepped pad feet
 19.5cm (7 3/4in) long
 412g (13.25 oz)

£150-250



48

48
A GEORGE III SILVER TEA CADDY
 MAKER'S MARK W.T, POSSIBLY WILLIAM TUIE, LONDON 1770
 With a flower finial, gadrooned borders, chased with flowers and C-scrolls, engraved beneath with a crest
 14.5cm (5 3/4in) high
 With a wood liner

£500-700



49

49
A SET OF FOUR GEORGE III SCOTTISH SILVER SALTS
 FRANCIS HOWDEN, EDINBURGH CIRCA 1783-1817
 With gadrooned borders and on shaped oval pedestal feet
 11cm (4 1/4in) long
 With later glass liners
 Together with four later matched salt spoons
 514g (16.55 oz) gross

Provenance:
 Purchased: Marks Fine Antique Silver, London, October 2002
 The Estate of a deceased Gentleman

£200-400



50

50
A GEORGE III SMALL SILVER PAIL
 HESTER BATEMAN, LONDON 1787
 With a reeded loop handle and a pierced body
 13cm (5in) high
 79g (2.55 oz)
 With a blue glass liner

£150-250



51

51
A GEORGE III SILVER CIRCULAR SALVER
 ELIZABETH JONES, LONDON 1784
 With a bead and reel border, engraved and chased with floral sprays and C-scrolls, on three beaded feet
 31cm (12 1/4in) diameter
 786g (25.3 oz)

£250-350



52

52
A PAIR OF GEORGE III IRISH SILVER MOUNTED WINE COASTERS
 MAKERS MARK R. ..., Dublin 1803
 With ribbed bodies and turned wooden bases
 15cm (6in) diameter

£300-500



53

A PAIR OF GEORGE III SILVER OVAL STANDS
 JOHN CROUCH I & THOMAS HANNAM, LONDON 1787
 With a reeded border, engraved with an armorial and on four pad feet
 25cm (9 3/4in) long
 818g (26.3 oz)

The arms are uncertain, but may be those of EVERLEY, GARNON or GERNON

£600-800



53



54

54
A GEORGE III SILVER SHAPED OVAL TEA CADDY
 ROBERT HENNELL I, LONDON 1792
 With a seated figure terminal to the domed cover, the body chased with birds and a dog among trees, within foliate borders
 15cm (6in) long
 438g (14.1 oz)

£500-700

55

A PAIR OF GEORGE III SILVER BOTTLE COASTERS
 JOHN GREEN, ROBERTS, MOSLEY & CO., SHEFFIELD 1804
 With beaded borders and a lobed band
 14.5cm (5 3/4in) diameter
 With turned wooden bases

£200-300



55



56

56
A GEORGE III SILVER SHAPED CIRCULAR SALVER
 MAKER'S MARK OBSCURED, LONDON 1799
 With a scroll and foliate border, engraved with a band of foliage and flowers, and a crest, on three foliate scroll feet
 24cm (9 1/2in) diameter
 566g (18.2 oz)

£150-250

57

AN AMERICAN SILVER FOUR PIECE OVAL TEA SET
 J. SAYRE, NEW YORK, CIRCA 1800
 The tea pot with an urn shaped finial to the high domed cover, a wooden loop handle, engraved with decorative bands and MAW within a wreath
 30cm (11 3/4in) long

Together with a matching pedestal bowl by Robert Wilson, New York, circa 1800, 14.5 (5 3/4in) high
 1807g (58.1 oz) gross

£700-1,000



57



58

58
A GEORGE III SILVER RECTANGULAR SNUFF BOX
 JOHN SHAW, BIRMINGHAM 1818
 With chased floral bands, engine turned decoration
 and a rectangular vacant reserve
 Size/dimensions: 7cm long
 Gross weight: 92g (2.95 oz)

£100-150

59
A GEORGE IV SILVER EAR TRUMPET
 MARY ANN & CHARLES REILY, LONDON 1828
 With a girdle and engraved with an armorial
 33cm (13in) long
 178g (5.75 oz)

These are the arms of the SHIRLEY family of Derbyshire, Leicestershire and Staffordshire.
 The family held the title of Earl Ferrers.

Provenance:
 Private Collection
 Purchased: Tessiers, London, 1990s

£300-500



59

60 Y
A GEORGE IV SILVER TEA POT
 WILLIAM ELEY II, LONDON 1825
 With a flower finial to the domed cover, a leaf capped double
 scroll handle with ivory warming bands, the body embossed
 with a band of flowers and scrolls, and on four foliate pad feet
 20cm (8in) high
 1027g (33 oz) gross

Please note Dreweatts have applied for a de minimis
 exemption licence for the ivory in this lot Ref: T2SZZ5AN

£400-600



60



62

61
NINE SILVER DECANTER LABELS
 To include: four George IV shaped oval decanter labels by Edward Thomason, Birmingham 1829,
 chased with masks and grape vines, pierced Sherry, Port and two Madeira, 6.5cm (2 1/2in) long;
 four similar by Charles Rawlings & William Summers, London 1853 (2), 1860, 1861; and a further
 similar example by Charles Reily & George Storer, London 1830
 175g (5.65 oz) gross

£200-300

62
A WILLIAM IV SILVER WAGER CUP
 POSSIBLY WILLIAM ELEY II, LONDON 1829
 The maiden holding aloft a swinging cup chased with acanthus leaves, the dress chased with
 foliate swags
 26cm (10 1/4in) high
 625g (20.1 oz)

£800-1,200

63 Y
A WILLIAM IV SILVER THREE PIECE CIRCULAR
TEA SET
 JOSEPH CRADDOCK, LONDON 1830
 The tea pot with a greyhound finial
 to the domed cover, ivory bands to
 the scroll handle, a girdle and on a
 circular foot
 29cm (11 1/2in) long
 1293g (41.55 oz) gross

Please note Dreweatts have applied for a de
 minimis exemption licence for the ivory in
 this lot Ref: Z8GD9JMX

£500-700



63



64

64
A VICTORIAN SILVER SWING HANDLED OVAL EGG CUP STAND AND SIX EGG CUPS
 ROBERT HENNELL III, LONDON 1850
 With a cable twist swing loop handle, a wirework body, engraved with a crest and six wirework egg cups
 22.5cm (9in) long
 806g (25.9 oz)

The crest is associated with the arms of John Frederick DICKSON (1835-1891), but they may possibly be those of his father Dr. Robert DICKINSON MD (1805-1875) formerly of Dumfries, Scotland, and his mother Mary Ann COOPE (1807-1875).

£600-800

65
A VICTORIAN SILVER DRUM TEAPOT
 HENRY HOLLAND, LONDON 1865
 With a wooden domed finial to the flat cover and loop handle, beaded borders, engraved with swag bands, a crest and a monogram
 23cm (9in) long
 458g (17.7 oz) gross

The crest belonging to the Scottish family of HAMILTON. It does appear frequently as this family is very extensive with noble titles of Dukes, Marquesses, Earls, Viscounts, Barons, Baronets, knights and esquire.

£150-250



65

66
A VICTORIAN SILVER SHAPED CIRCULAR SALVER
 EDWARDIAN & JOHN BARNARD, LONDON 1858
 With a scroll and shell border, engraved with a crest and on three scroll feet
 26.5cm (10 1/2in) diameter
 519g (16.7 oz)

£200-300



66



68

68
A VICTORIAN SILVER LOUD HAILER
 CHARLES THOMAS FOX AND GEORGE FOX, LONDON 1859
 With three girdles and engraved Adml. Sir William Bowles R. N.
 57.5cm (22 3/4in) high
 930g (29.9 oz)

Provenance:
 Private Collection

Purchased: Tessiers, London, 8 August 1991. Stolen and recovered in 1999, subsequently repaired by S. J. Phillips, London.

£800-1,200



67

67
A MATCHED PAIR OF VICTORIAN SILVER GILT PEDESTAL SALTS
 ROBERT HENNELL III, LONDON 1865 AND 1872
 With beaded borders, chased with flower heads to a lattice ground, engraved with a crest and on conforming circular pedestal feet
 7cm (2 3/4in) diameter

Together with a pair of Victorian silver gilt salt spoons by Robert Hennell III, London 1872, 9cm (3 1/2in) long
 175g (5.65 oz) gross

The crest associated with the arms of the ROSE family of Buckinghamshire. The arms are recorded for the family from Waddesden, Buckinghamshire. Possibly for William ROSE (1840-1921) a farmer of Waddesden who married Elizabeth Sarah DODWELL (1843-1936).

Provenance:
 Private Collection

£300-500



69

69
A VICTORIAN SILVER EWER
 JOHN HUNT & ROBERT ROSKELL, LONDON 1869
 The scroll handle capped with a woman's bust, the body with two girdles and on a circular moulded spreading foot, stamped Hunt & Roskell Late Storr & Mortimer 429
 30cm (11 3/4in) high
 747g (24.05 oz)

£500-700



70 (part lot)

70
A VICTORIAN SILVER HOUR GLASS
PATTERN PART TABLE SERVICE
 GEORGE ADAMS, LONDON 1873
 Engraved with a crest, comprising:
 Nine table forks, five table spoons, three
 dessert forks, two dessert spoons, six tea
 spoons, a sauce ladle and a mustard spoon
 1880g (60.45 oz)

£600-800



71

71
A CONTINENTAL SILVER HOT WATER JUG
 PROBABLY DUTCH, SPONSOR'S MARK DAVID BRIDGE, LONDON IMPORT 1895
 With an urn shaped finial to the foliate chased domed cover, a wicker wrapped
 angular handle, the body chased with masks, ribbons, husk swags and guilloche band,
 two oval vacant reserves and on a circular foot
 20cm (8in) high
 313g (10.1 oz) gross

£100-150



72

72
A VICTORIAN SILVER PEDESTAL
ROSE BOWL
 SIBRAY, HALL & CO., LONDON 1892
 The half lobed and fluted body with a cable
 twist band and on a conforming pedestal foot
 20cm (8in) high
 582g (18.7 oz)

£200-300

73
A VICTORIAN SILVER BISCUIT BARREL
 MARTIN, HALL & CO., LONDON 1876
 With a tapering hexagonal finial to the ogee domed
 cover, the body engraved with a band of birds perched
 on branches, flower heads within roundels and vacant
 reserves, to a circular base
 20cm (8in) high
 746g (24 oz)

£500-700



73



74

74
A VICTORIAN SILVER BISCUIT BARREL
 FREDERCK ELKINGTON, BIRMINGHAM 1875
 With a ball and domed finial to the foliate chased cover,
 the body in the form of a draped barrel, to a beaded
 circular pedestal base with a floral band
 26cm (10 1/4in) high
 1044g (33.55 oz)

£1,800-2,200



75
A VICTORIAN SILVER MOUNTED CLARET JUG
 JOHN ALDWINCKLE & JAMES SLATER, LONDON 1882
 With a pierced heart shaped thumb piece to the domed cover and with an angular handle
 24.5cm (9 3/4in) high

£150-250

75

76
A SET OF FOUR DUTCH SILVER CANDLESTICKS
 CIRCA 1900
 With lobed circular sconces, wrythen stems chased with assorted foliage, to domed bases chased with foliage and portraits within oval medallions
 32cm (12 1/2in) high
 2767g (88.95 oz)

£600-800

77
A GERMAN SILVER SHAPED OVAL TWIN HANDLED TRAY
 M. H. WILKENS & SÖHNE, POST 1886 .800 STANDARD
 With twin shell handles and a raised moulded border
 61cm (24in) long
 1715g (55.1 oz)

£500-700



76



77



78

78
A SET OF FOUR GEORGE IV SILVER OBLONG BALUSTER VEGETABLE DISHES
 HENRY HYAMS, LONDON 1827
 The fluted domed covers with foliate loop handles and engraved with a crest, the bodies with chased foliate and shell borders, twin foliate loop handles, engraved with a crest, on four foliate and lion paw feet
 22cm (8 3/4in) long
 4656g (149.7 oz)

The crest of a British Viscount.

£4,000-6,000



80

79 (NO LOT)

80
A CASED CONTINENTAL SILVER GILT CUP AND SAUCER
 SPONSOR'S MARK FOR GUSTAVE GUILAUDET, IMPORT MARK FOR LONDON 1880
 The cup with a leaf capped scroll handle, engraved with foliate swags and a monogram, the saucer conforming
 The cup 6.5cm (2 1/2in) high, the saucer 13.5cm (5 1/4in) diameter
 232g (7.45 oz)

£100-150

81
A PAIR OF VICTORIAN SILVER TWIN LIGHT CANDELABRA
 ELKINGTON & CO. LTD., BIRMINGHAM 1893

With gadrooned circular sconces and drip pans, reel capitals, twin scroll arms, knopped waisted stems and incurving square bases
 29.5cm (11 3/4in) high
 708g (22.8 oz) weighable
 Bases loaded

Provenance:
 The Leonard Fuller Collection

£500-700



81



82

82
A FRENCH ELECTROPLATED WINE CISTERN
 AUGUSTE NICOLAS CAIN, CIRCA 1870
 The shaped oval bowl with disrobed Artemis and Actaeon supporters, each with a hound, each side with a chased coronet, one above a vacant reserve, the other reserve chased with two intersecting arms, the integrated base tray with stag and deer detail with reeded scrolled handles, large bowl, signed a Cain 187C épreuve unique, with removable liner
 60.5cm (23 3/4in) long

This arrangement of arms represent the complete armorial for Alexandre-Marie-Sébastien de Plœuc, (1815-1887) Marquis de Plœuc and his wife Emilie-Agathe-Marie de MAUDIT du Plessis.

£800-1,200

83
AN EDWARDIAN SILVER QUEEN'S PATTERN PART TABLE SERVICE
 HOLLAND, ALDWINCKLE & SLATER, LONDON 1904
 Engraved with a crest, comprising:
 Twenty four table forks, thirteen table spoons, twenty four dessert forks, twenty three dessert spoons
 6834g (219.7 oz)

£2,200-2,800



83 (part lot)

84
AN EDWARDIAN SILVER OVAL PEDESTAL BOWL
 ATKIN BROTHERS, SHEFFIELD 1904
 With a pierced border and on an oval pedestal foot
 29cm (11 1/2in) long
 438g (14.1 oz)

£450-550



84

85
A VICTORIAN SILVER HALF LOBED KETTLE ON STAND
 CHARLES STUART HARRIS, LONDON 1898
 With a wooden loop handle and lobed finial, engraved with a crest, above a burner and on three scroll legs and shell feet
 33cm (13in) high
 1613g (51.85 oz) gross

This is the crest associated with the arms of the COURTHOPE family of Danny Place, Sussex in the period 1652-1725, from when they also held the manors of Hurstpierpoint and Hunderdeane.

£500-700



85

86

A FRENCH SILVER SEVENTEEN PIECE TABLE SERVICE

MAISON ODIOT, .925 MINERVA MARK, PARIS, CIRCA 1870

With bay leaf and ribbon borders, the dishes and sauce boat engraved with an armorial, comprising:

Four vegetable dishes with covers, liners and under dishes, 30cm (11 3/4in) diameter

A sauce boat on stand with liner, 28cm (11in) long

Two circular dishes, 30cm (11 3/4in) diameter

Two circular deep dishes, 36cm (14 1/4in) diameter

Three oval dishes, 44cm (17 1/4in) long

An oval dish, 48.5cm (19in) long

25,084g (806.5 oz)

The arms are for Count Arthur-Fernand-Maxime-Tiburce FOY (1847-1927) and his wife Marie GERARD (1849-1915).

Count Arthur-Fernand-Maxime-Tiburce FOY was the grandson of General Maximilien Sébastien FOY (1775-1825), a feted general in Napoleon's First Empire.

£18,000-22,000



86



87

87
AN INDIAN SILVER FOUR PIECE TEA SERVICE
UNMARKED, ATTRIBUTED TO P. ORR & SONS,
MADRAS, LATE 19TH CENTURY

The tea pot with a finial in the form of a figure
entwined with a serpent beneath a tree, a serpent
scroll handle, beaded and foliate bands, the body
chased with the ritual procession at Puri
25cm (9 3/4in) long
1536g (49.4 oz)

See pages 157 and 158 from *Indian Silver 1858-1947*
by Wynard R. T. Wilkinson for similar examples by
P. Orr & Sons and a page from a sales catalogue
circa 1880.

£800-1,200

88
AN AUSTRALIAN SILVER CRICKETING TROPHY
CUP AND COVER

H. STEINER, ADELAIDE, CIRCA 1879
With a cricketer finial to the foliate engraved cover,
the body engraved with grape vines and 'Adelaide
& Suburban Cricketing Association Challenge Cup,
Season 1879-80, won by The East Adelaides' and
Presented T C. H. Brooks, Vice President', a knopped
stem and on a circular moulded spreading foot
28cm (11in) high
384g (12.35 oz)

Provenance:
Private Collection

£1,000-1,500



88



90

90
AN EDWARDIAN SILVER SWING HANDLED SHAPED OVAL
BASKET AND TWO BOWLS
CARRINGTON & CO., THE BASKET LONDON 1908,
THE BOWLS 1905

The basket with a swing oval link loop handle, a moulded reeded
and shell border, a pierced basket weave body and on an oval foot,
the two shaped circular bowls conforming
The basket 33.5cm (13 1/4in) long, the bowls 22cm (8 3/4in) diameter
2559g (82.3 oz)

£1,800-2,200

91
AN EDWARDIAN SILVER SHAPED CIRCULAR SALVER
MARPLES & CO., SHEFFIELD 1904
With a chased foliate scroll border and on three foliate scroll feet
32.5cm (12 3/4in) diameter
806g (25.9 oz)

£500-700



91



89

89
A PAIR OF EDWARDIAN SILVER SHAPED
CIRCULAR BASKETS
WALKER & HALL, SHEFFIELD 1904
With loop handles, pierced foliate swag bands
and on three ball and claw feet
15.5cm (6in) diameter
428g (13.8 oz)

Provenance:
The Estate of a deceased Gentleman

£150-250



92

92
AN EDWARDIAN SILVER-GILT CHRISTENING CUP
GEORGE NATHAN & RIDLEY HAYES, CHESTER 1906
With a foliate engraved scrolled handle, engraved with a presentation inscription and on a pierced circular pedestal foot
12.5cm (5in) high
286g (90.2 oz)

£100-150



93

93
A NORWEGIAN SILVER PEDESTAL BOWL
DAVID ANDERSEN, .830 STANDARD, 1888-1925 MARK
The hammered body with a beaded band, a chased floral and scroll band, on a circular pedestal foot
19.5cm (7 3/4in) high
604g (19.4 oz)

Provenance:
Private Collection

£300-500



94

94
AN EDWARDIAN SILVER PEDESTAL BOWL
WALKER & HALL, SHEFFIELD 1908
With a scroll border and on a circular moulded spreading pedestal foot
18cm (7in) diameter
352g (11.35 oz)

Provenance:
The Estate of a deceased Gentleman

£100-150



95

95
A DUTCH SILVER ETROG HOLDER
.835 STANDARD
On three foliate scroll feet
15cm (6in) long
329g (10.6 oz)

£300-500

96
A SILVER SPICE TOWER
JACOB FENIGSTEIN, LONDON 1912
With an orb and flag finial to the tapering spire, chased with flowers, suspending four bells and on a circular moulded spreading pedestal foot
24cm (9 1/2in) high
134g (4.3 oz)

£300-500



96

97

97
A 19th CENTURY RUSSIAN SILVER SPICE TOWER
MINSK 1875, UNKNOWN ASSAY MASTER, 84 ZOLOTNIKI
The steeple with a flag and knopped pole finial, the open tower with four bird and animal finials, a central bell, the waisted body chased with C-scrolls and suspending four bells, a knopped stem and on a square foot
27cm (10 1/2in) high
256g (8.25 oz)

£200-300



98

98
A DUTCH MATCHED SILVER GILT THREE PIECE TEA SET
 LATE 19TH CENTURY, .833 STANDARD
 The tea pot with a figural terminal to the star and foliate chased domed cover, a wicker wrapped scroll handle, a fluted band, chased with masks, foliage and flower baskets, on a circular foot, the hot water pot similar, on three ball and claw feet, the cream jug on three scroll legs
 The tea pot 19.5cm (7 3/4in) long, the hot water pot 24cm (9 1/2in) high, the cream jug 12.5cm (5in) high
 872g 28.05 oz) gross

£300-500



99



100

99
AN EASTERN EUROPEAN SILVER AND SILVER GILT ORTHODOX CHALICE
 19TH CENTURY, UNMARKED
 With a knopped stem to a shaped circular domed foot, chased and applied with religious scenes including the last supper and the resurrection, engraved with a Cyrillic inscription
 35cm (13 3/4in) high
 1492g (48 oz)

Provenance:
 Private Collection

£800-1,200

100
A LATE VICTORIAN SILVER FIVE LIGHT CANDELABRA
 HAWKSWORTH, EYRE & CO. LTD., SHEFFIELD 1895
 The shaped square sconces and drip pans with leaves to the corners, reel capitals, four scroll branches, a knopped baluster stem to a shaped moulded square base
 56.5cm (22 1/4in) high
 909g (29.25 oz) weighable

Provenance:
 Private collection, Northamptonshire

£700-1,000

101
A PAIR OF VICTORIAN SILVER BALUSTER CLARET JUGS
 STEPHEN SMITH & WILLIAM NICHOLSON, LONDON 1860
 The domed covers with baluster finials and engraved with a coronet above RR, the bodies with branch loop handles and applied with grape vines and on circular feet
 36cm (14 1/4in) high
 2339g (75.2 oz)

£2,000-3,000



101

102

102
A PAIR OF FRENCH SILVER MOUNTED AND CUT GLASS CLARET JUGS
 EDMOND TETARD, PARIS, CIRCA 1890
 With foliate finials to the domed covers, foliate scroll handles and chased with florals sprays and foliage, lobed wrythen bodies, on shaped square bases with foliate and lattice decoration
 26cm (10 1/4in) high

£2,000-3,000



103

103
A PAIR OF VICTORIAN SILVER OVAL PEDESTAL WINE CISTERNS
ACKROYD RHODES, LONDON 1895

With a pierced and chased foliate swag, shell and C-scroll border, the
 wrythen fluted bodies chased with C-scrolls and foliage, on foliate scroll
 bases, with later grills by Michael Sedler Antiques, London 2020
 39.5cm (15 1/2in) long
 6854g (220.35 oz) gross

£5,000-7,000

104 Y
A VICTORIAN SILVER GILT
ARMADA PATTERN EWER
EDWARD BARNARD & SONS,
LONDON 1896

With a C-scroll finial to the domed cover,
 a scroll handle with ivory warming bands,
 chased with foliage, floral sprays and swags,
 applied with winged figures, a vacant
 cartouche, another engraved 'George
 Rawlinson Esq. on the occasion of his golden
 wedding, with great affectionate greetings,
 from his brethren of Aldersgate Lodge No.
 1657, 12th June 1904', and on a conforming
 circular moulded pedestal foot
 36.5cm (14 1/2in) high
 1235g (39.7 oz) gross

Provenance:
 Private Collection

George Rawlinson (1812-1902) was a scholar,
 historian and theologian, and became the
 Camden Professor of Ancient History at the
 University of Oxford. He held the clerical
 positions of canon of Canterbury and rector
 of All Hallows, Lombard Street, London in the
 Church of England.

The Armada Pattern Ewer offered here was a
 gift on the occasion of his and his wife Louisa's
 50th wedding anniversary. Louisa was the
 daughter of renowned physician Sir Robert
 Alexander Chermiside.

Please note Dreweatts have applied for a de
 minimis exemption licence for the ivory in this
 lot Ref: D18H45HA

£2,000-3,000



104



105

105
A JAMES VI SCOTTISH SILVER COMMUNION CUP
 GEORGE CRAUFUIRD, DEACON'S MARK FOR JAMES
 DENNEISTOUN, EDINBURGH CIRCA 1619-1621
 With a knopped stem to a circular pedestal foot with a
 chased foliate band
 21.5cm (8 1/2in) high
 611g (19.65 oz)

See Jackson's Silver & Gold Marks of England, Scotland & Ireland,
 edited by Ian Pickford, page 541 for details of the marks

James VI was King of Scotland from 1566. He became the first Stuart
 King of England in 1603, and ruled as king of both countries until his
 death in 1625.

£5,000-8,000

106
A MID 17TH CENTURY AND LATER SILVER AND SILVER GILT ROYALIST BOX
 UNMARKED CIRCA 1640 -1670
 The hinged cover with a portrait of Charles I within a pierced and engraved border of Tudor
 roses between the Royal supporter emblems of the unicorn of Scotland and the lion of
 England, beneath two hovering winged putti supporting a crown, above an engraved armorial
 Size/dimensions: 6.3 x 5 x 1.7cm
 Gross weight: 51g (1.65 oz)



106

The arms are likely to be those of Thomas TOMLIN (c1615-1677) of St Leonard's Bromley,
 Middlesex, a Justice of the Peace and wealthy merchant with English East India Company interests.

Provenance:
 Private Collection

£700-1,000



107

107
A WILLIAM III SILVER LIGHTHOUSE SUGAR CASTER
 POSSIBLY BY BENJAMIN BRAFORD, LONDON 1697
 With a double knopped finial to the pierced cover, gadrooned bands,
 a girdle and on a pierced circular foot
 19cm (7 1/2in) high
 348g (11.2 oz)

£800-1,200



108

108
A PAIR OF QUEEN ANNE SILVER BRITANNIA STANDARD
BALUSTER CASTERS
 MAKER'S MARK F.A, LONDON 1713
 With orb shaped finials to the pierced domed covers, the bodies
 with a girdle, engraved with an armorial and on circular moulded
 spreading feet
 17cm (6 3/4in) high
 479g (15.4 oz)

£600-800



109

109
A SET OF THREE GEORGE II SILVER
TEA CADDIES
 MAKER'S MARK W.A (UNIDENTIFIED),
 LONDON 1755
 With flower finials to the gadrooned shaped
 oblong covers, chased with flowers, engraved
 with vacant cartouches and on four scroll feet
 12cm (4 3/4in) high
 807g (25.95 oz)

£2,500-3,500



110

110
A GEORGE II SILVER TWIN HANDED
TROPHY CUP AND COVER
 WILLIAM GRUNDY, LONDON 1757
 The ogee domed cover with a baluster
 bud finial, a chased grape vine band and a
 gadrooned border, the body with twin leaf
 capped scroll handles, a chased foliate and
 floral band, engraved with an armorial and a
 monogram, on a conforming pedestal foot
 35cm (13 1/4in) high
 2121g (68.2 oz)

£800-1,200



111

111
A GEORGE III SILVER COW CREAMER
 JOHN SCHUPPE, LONDON 1764
 The floral chased cover with an applied fly
 15cm (6in) long
 137g (4.4 oz)

£1,500-2,500



112

112
A SET OF FOUR GEORGE III SILVER OVAL BALUSTER SALTS
 DAVID HENNELL I & ROBERT HENNELL I, LONDON 1763
 With gadrooned borders and on four lobed pad feet
 8.5cm (3 1/4in) long

Together with four Old English pattern spoons by William Chawner II,
 London 1825, engraved with a crest, 11cm (4 1/4in) long
 632g (20.35 oz) gross

£600-800

113
A GEORGE III SILVER BALUSTER COFFEE POT
 MAKER'S MARK OBSCURED, LONDON 1765
 With a bud finial to the ogee domed cover, a gadrooned border,
 a wooden double scroll handle and on a gadrooned circular foot
 28cm (11in) high
 885g (28.45 oz) gross

Provenance:
 Private Collection

£400-600



113



114

A PAIR OF QUEEN ANNE SILVER CANDLESTICKS

RICHARD SYNG, LONDON 1703

With gadrooned and canted corner sconces, slightly tapering fluted stems with a gadrooned knop, to canted square moulded bases with vacant oval reserves

24cm (9 1/2in) high

734g (23.6 oz)

£4,000-6,000

115

A PAIR OF QUEEN ANNE SILVER CANDLESTICKS

RICHARD SYNG, LONDON 1703

With gadrooned and canted corner sconces, slightly tapering fluted stems with a gadrooned knop, to canted square moulded bases, engraved with an armorial within an oval reserve

23.5cm (9 1/4in) high

876g (28.15 oz)

This is the impaled armorial for the WEARE family of Weare Gifford near Wellington, Devon.

£4,000-6,000



116

116

A PAIR OF QUEEN ANNE SILVER OCTAGONAL CANDLESTICKS

THOMAS MERRY, LONDON 1709

With octagonal capitals, knopped stems, engraved with a crest, R over W.S beneath and on an octagonal spreading base

18cm (7in) high

612g (19.7 oz)

£2,000-3,000

117

117

A PAIR OF QUEEN ANNE OCTAGONAL CANDLESTICKS

ALICE SHEENE, LONDON 1712

With octagonal capitals, knopped stems, engraved with a crest and on octagonal spreading bases

18.5cm (7 1/4in) high

8810g (26.05 oz)

These are arms of Sir Francis ANDREWS (died 1759) 4th Baronet of Doddington, Northamptonshire.

£2,000-3,000



118

118
FIVE 18TH CENTURY ENGLISH SILVER COUNTER BOXES
 To include: a Queen Anne circular box, stamped with maker's mark TK only, the cover with a portrait bust of Queen Anne between Q and A, 2.5cm (1in) diameter, with four similar tokens; another similar; a Queen Anne circular box, stamped with maker's mark ... A only, the cover with a portrait bust of Queen Anne between A and R, 2.5cm (1in) diameter, with a token; a circular box, stamped with maker's mark WP above a pellet in a heart shaped punch, the cover engraved with a foliate swag, 2cm (3/4in) diameter; and a George III circular box, maker's mark TT, Birmingham 1798, the cover with an arrow pointer 1 to 10, 3cm (1 1/4in) diameter, with four one shilling silver tokens
 52g (1.7 oz) gross

Provenance:
 Private Collection

£500-700



119

119
A GEORGE I SILVER SHAPED CIRCULAR STRAWBERRY DISH
 WILLIAM DARKER, LONDON 1722
 With a fluted body and engraved with an armorial to the centre and P*E beneath
 25cm (9 3/4in) diameter
 467g (15 oz)

These are the arms of the RYDER family of Hackney, Middlesex. At the time of assay (1722) there are two possible members of the family who are likely owners or subsequent owners. They are: (1) Richard RYDER (1657-1733) a draper and merchant of Hackney, Middlesex who is recorded as a citizen of West Smithfield. In 1789 he married for a second time Elizabeth MARSHALL (1667-1721) daughter of William MARSHALL of Lincoln's Inn. (2) their second son Dudley RYDER (1691-1756) a lawyer, called to the Bar in 1719 and in 1733 elected MP for St German.

£1,500-2,500



120

120
A QUEEN ANNE SILVER TAZZA
 RICHARD GREEN, LONDON 1707
 Engraved with an armorial to the centre, H over WE beneath and on a circular moulded spreading pedestal foot
 23cm (9in) diameter
 562g (18.1 oz)

These are the arms of the Ramsden family, who at the time of grant (1575) were of Longley, Yorkshire. The family were created in 1689 Baronets of Byram, Yorkshire. The date of assay (1707) appears to indicate that the person who commissioned this item was Sir William RAMSDEN (1672-1736) 2nd Baronet, a famous pioneering horse breeder of Byram. He was the son and heir of Sir John RAMSDEN (1648-1690) 1st Baronet by Sarah BUTLER (1649-1684) of Gainsborough Lincolnshire.

£1,500-2,500



121

121
A QUEEN ANNE & GEORGE I SILVER CHAMBERSTICK
 THOMAS ASH, LONDON, POSSIBLY 1701 AND JOHN FARNELL, LONDON 1717
 With reel shaped capitals, flattened baluster handles and on three compressed feet
 20cm (8in) long
 493g (15.85 oz)

Provenance:
 Sale: Christie's, Important Silver And Gold, Lot 726, 1st December 2004

£1,000-1,500



122

122
A QUEEN ANNE SILVER CUP AND COVER
 DAVID WILLAUME I, LONDON 1706
 The domed cover with a knopped finial, cut card decoration and lobed border, the body with twin scroll handles, a girdle, cut card decoration, engraved with an armorial and on a gadrooned circular foot
 23cm (9in) high
 1325g (42.6 oz)

The armorial is untraced.

£2,000-3,000

123

A VICTORIAN SILVER NOVELTY THREE PIECE CRUET SET
JAMES BARCLAY HENNELL, LONDON 1880 (1) AND 1886 (2)

The salt modelled as Toby, 8cm (3 1/4in) high, the pepperette as Judy,
9cm (3 1/2in) high and the mustard as Punch, 10cm (4in) high
494g (15.9 oz)

Provenance:

Private Collection

£8,000-12,000



124

A FRENCH SILVER CENTER PIECE

H. FRES & CIE, RETAILED BY BOIN-TABURET, PARIS, .950 EXPORT MARK,
EARLY 20TH CENTURY

With a reed and stitch border, a pierced and chased flowerhead and lattice body,
the bowl on three twin tailed mermaid supports, to a beaded shaped circular base
33cm (13in) diameter
6437g (206.95 oz)
With an electro-plated liner, stamped Boin-Taburet

Provenance:

Sale: Sotheby's, New York, 16th November 2011, Lot 26

Maison Boin-Taburet was established in 1873 by silversmith Georges Boin and his jewellery maker father-in-law, Emile Taburet. From the 1880s, Boin-Taburet were at the forefront of the revival of Louis XV and Louis XIV styles in French silverware. The silverware they commissioned and sold was inspired by 18th century craftsmen and artists like François-Thomas Germain (1726-1791) and Juste-Aurèle Meissonier (1695-1770). The mermaid supports on the lot offered here are highly reminiscent of the mermaids on the wine cooler designed by Meissonier in 1723 for Louis-Henri de Bourbon, Prince de Condé. Boin-Taburet won a Gold Medal at the 1889 Paris Exposition Universelle for their 18th century revival style. Georges and Emile continued to work together until 1900, when the firm became Boin and Henry Goldsmiths. The name changed again in 1906 to Henry Brothers & Co, and later to Henry & Son in 1936.

£12,000-18,000



124



125

125
A FRENCH SILVER GILT LOUVECIENNES PATTERN TABLE SERVICE FOR EIGHTEEN

MAISON ODIOT, .925 MINERVA MARK, 18TH CENTURY
 Engraved with an armorial, comprising:
 Eighteen dessert forks, eighteen dessert spoons, eighteen sorbet spoons, a pair of serving spoons, a sifting spoon
 3076g (98.9 oz)

Together with the following knives with filled handles:
 Eighteen dessert knives with silver gilt blades, eighteen dessert knives with steel blades, a cheese knife with silver gilt blade

In a fitted canteen

The arms appear to be those of the Marquess de la TOURNELLE, a French title that became extinct in 1740, but continued to be recognised in the Domaine de la TOURNELLE. The last Marquess is often recognised as the latter Jean-Baptiste de la TOURNELLE (1733-1802), whose wife Marie de CHASTELLUX (1732-1797). The arms may have been later adopted as the arms of the Marquess de SESMAISON.

Maison Odiot, supplier of silverware to the 18th and 19th century French court, designed the Louveciennes table service in 1781 during the reign of Louis XVI, when the firm was headed by Jean-Claude Odiot. This delicate design, with its shell motif surrounded by garlands of bay leaves, has become one of Odiot's most recognisable and desirable cutlery patterns.

£5,000-7,000



126
A SET OF EIGHTEEN SILVER GILT SHAPED CIRCULAR PLATES
 TESSIERS LTD., LONDON 1927
 With reed and foliate borders, engraved with an armorial
 23cm (9in) diameter
 9047g (290.9 oz)

The impaled armorial contains in dexter (paternal) the arms of AYLMER, a Scottish family with some representation in Ireland, and in sinister (maternal) the multi-quartered arms of the extensive family of HAMILTON, which includes Dukes of Hamilton.

£3,000-5,000



127 Y
A SILVER SEVEN PIECE TEA AND COFFEE SERVICE
 MAPPIN & WEBB, SHEFFIELD 1928

Comprising: kettle on stand, hot water jug, coffee pot, tea pot, sugar bowl, milk jug and a large twin handled tray, the kettle, hot water jug, tea and coffee pots with ivory handles
 Kettle on stand 36cm (14 1/4in) high, tray 70cm (27 1/2in) wide
 8574g (275.7 oz) gross

Provenance:
 The Estate of a deceased Gentleman

Please note: Dreweatts have applied for a de minimis exemption licence for the ivory in this lot (Ref: 2Z6YUYNL)

£2,500-3,500

128

**A FRENCH SILVER, SILVER GILT AND PARCEL GILT TABLE SERVICE
MAISON KELLER, MINERVA MARK, CIRCA 1900**

Comprising:

The following in silver and parcel gilt:

Thirty six table forks, eighteen table spoons, eighteen oyster forks, two pairs of salad servers, two sauce ladles, a serving fork and serving spoon

The following in silver gilt:

Twelve dessert forks, twelve dessert spoons, twelve tea spoons, twelve sundae spoons, twelve melon spoons, a pair of sugar tongs, a pair of ice tongs, two sorbet spades, two melon spades, two ice cream spades, two melon servers, two sauce ladles, two sifting spoons, two pickle forks

Weighable silver 11719.8g (376.82oz)

Together with the following loaded handled pieces:

Thirty six table knives with stainless steel blades, eighteen fish knives and eighteen fish forks, two fish serving forks, one fish serving knife, one fish slice, two cake servers

Together with the following silver gilt pieces with loaded handles:

Twelve dessert knives with silver gilt blades, twelve dessert knives with stainless steel blades, two dessert servers, two fish slices, two serving knives, a pair of grape scissors, a pastry slice

In a fitted canteen (244)

Maison Keller was founded in 1856 by Gustave Keller at 65 rue de Turbigo in Paris, and the exceptional quality of his designs and wares won him a gold and silver medals at the 1867 and 1878 Paris Expositions Universelles. The firm became Keller Frères in 1878 and started to manufacture silverware. They moved premises again in 1891 to 22 rue Joubert. They continued to exhibit at the major international exhibitions and won a gold medal again in 1899 and the Grand Prix in 1900. Maison Keller was patronised by major international clients, and they became official supplier of silverware to the courts of Spain, Russia, Greece and Romania.

£15,000-20,000



128 (part lot)





129 (part lot)

129
A SET OF TWELVE SILVER KING'S PATTERN FISH KNIVES AND FORKS
 ATKIN BROTHERS, SHEFFIELD 1930
 The knives 22cm (8 3/4in) long, the forks 18.5cm (7 1/4in) long
 Loaded

£250-350

131
A SILVER KETTLE ON STAND
 WILLIAM COMYNS & SONS LTD., LONDON 1929
 With a wooden finial and swing loop handle, engraved decorative bands, above a burner on three scroll legs
 32cm (12 1/2in) high
 1587g (21 oz) gross

£500-700



130 (part lot)

130
A MATCHED SILVER FIDDLE, SHELL AND THREAD PATTERN PART TABLE SERVICE
 VARIOUS MAKERS AND DATES
 Some crested, comprising:
 Twenty five table forks, eight table spoons, seventeen dessert forks, thirty five dessert spoons, eighteen tea spoons, four sauce ladles, a basting spoon
 7186g (231.05 oz)

Together with the following silver handled knives with stainless steel blades:
 Eighteen table knives,
 eighteen dessert knives

£2,500-3,500



131

132
A SET OF TWENTY FOUR SILVER KING'S PATTERN TABLE KNIVES AND DESSERT KNIVES
 ATKIN BROTHERS, SHEFFIELD 1935
 With stainless steel blades
 The table knives 26.5cm (10 1/2in) long, the dessert knives 23cm (9in) long

£500-700



132 (part lot)



133

133 Y
A SILVER FOUR PIECE LOBED CIRCULAR TEA SET
 MAPPIN & WEBB, SHEFFIELD 1931 (1) AND 1932 (3)
 The tea and hot water pots with ivory compressed finials and loop handles, engraved with decorative bands
 The tea pot 27cm (10 1/2in) long, the hot water pot 19cm (7 1/2in) high
 2225g (71.5 oz) gross

Please note Dreweatts have applied for a de minimis exemption licence for the ivory in this lot Ref: NQ9D53FB

£700-900

134
A SILVER SHAPED CIRCULAR SALVER
 ELKINGTON & CO., BIRMINGHAM 1923
 With a raised moulded border and on three pad feet
 31cm (12 1/4in) diameter
 800g (25.7 oz)

£300-500



134



135

135
A SILVER CIRCULAR INKWELL
GARRARD & CO. LTD., LONDON 1935
The hinged cover with the arms of the Goldsmith Company
10cm (4in) diameter
427g (13.7 oz)
With a glass liner

£250-350



136

136
A SILVER MINIATURE BUST OF WINSTON CHURCHILL
GEORGE WEIL, LONDON 1969
Signed G. Weil
8cm (3 1/4in) long
388g (12.45 oz)

Provenance:
Private Collection

George Weil was born in Vienna in 1938 into a family of jewellers, and his family were amongst the last to escape Antwerp for London in 1939. Aged 18, George founded his jewellery company George Weil Jewellery Limited in London's Hatton Garden. He had studied at St Martin's School of Art, specialising in sculpture, painting and jewellery, and later described himself firstly as a sculptor, and secondly as a jeweller. Alongside his jewellery, he produced portrait busts of Winston Churchill, such as the lot offered here, Sammy Davis Junior and other iconic figures. Many of his pieces remain unmarked as he seldom took them to Goldsmiths Hall to be assayed and hallmarked.

£500-700



137

137
AN AMERICAN SILVER 'NAST' EAGLE HEAD CANE HANDLE
TIFFANY & CO., STAMPED 7132 1308 STERLING, CIRCA 1910
Engraved C.A.A.
10cm (4in) long

Together with an American silver seal by Tiffany & Co., stamper sterling, the handle engraved F.C.R and with a vacant circular matrix, 7.5cm (3in) long
103g (3.2 oz) gross

Provenance:
Private Collection

The cane handle sale: Sotheby's, New York, Important Americana, 22 January 2011, Lot 82

Tiffany based the design for this cane handle on the drawings of the German-American political cartoonist, Thomas Nash (1840-1902).

£1,000-1,500



138

138
A PAIR OF FRENCH SILVER CANDLESTICKS
STAMPED TIFFANY & CO., MINERVA MARK,
CIRCA 1900
With shaped circular sconces, urn shaped capitals engraved with a monogram, the stems chased with portraits and foliage, to shaped circular moulded bases with shell, scrolls and beaded decoration
32cm (12 1/2in) high
3186g (102.45 oz)

£3,000-5,000



139

139
A PAIR OF AMERICAN SILVER TRUMPET VASES
TIFFANY & CO., PATTERN NO. 20689,
NO. 6364 AND 6243, CIRCA 1930
Each engraved G over H within a circular reserve, a girdle, a knopped stem and on a circular moulded spreading foot
43cm (17in) high
3635g (116.85 oz)

£2,500-3,500



140

140
A PAIR OF DANISH SILVER CACTUS PATTERN FISH SERVERS
 GEORG JENSEN, IMPORT MARKS FOR LONDON 1961
 Engraved with a fish
 The fork 20cm (8in) long, the server 22.5cm (9in) long
 210g (6.75 oz)

£250-350



141

141
A DANISH SILVER CIRCULAR SWEETMEAT PEDESTAL DISH
 GEORGE JENSEN & WENDEL A/S, PATTERN NUMBER 181B,
 CIRCA 1945
 On a beaded pedestal foot
 13cm (5in) diameter
 146g (4.7 oz)

£150-250



142

142
AN ITALIAN SILVER COLOURED BOWL
 BRANDIMARTE, FIRENZE POST 1968 .800 STANDARD
 Chased with an acorn band to a textured ground
 14cm (5 1/2in) diameter
 439g (14.1 oz)

Provenance:
 Private Collection

£200-300

143
A PAIR OF ELECTRO-PLATED AND FAUX MALACHITE CANDLESTICKS
 GUCCI, CIRCA 1975
 With cone capitals, resin columns, to reeded square plinth bases
 31cm (12 1/4in) high

£250-350



143



144

144
AN ITALIAN SILVER COLOURED TEA POT
 SAN LORENZO, POST 1968 .925 STANDARD
 With twin swing loop handles, double wooden ball finial
 to the pull of cover and a textured body
 19cm (7 1/2in) high
 666g (21.4 oz) gross

Provenance:
 Private Collection

£300-500

145
A FRENCH ELECTRO-PLATED PART TABLE SERVICE FOR TWELVE PLACE SETTINGS
 BOULENGER
 With reed and stitch borders, comprising:
 Twelve table forks, twelve table spoons, twelve dessert
 forks, twelve dessert spoons, twelve fish forks, twelve fish
 knives, a pair of fish servers, a pair of salad servers

£300-500



145 (part lot)



146



147



148

146
A PAIR OF SILVER MODELS OF FIGHTING COCKS
SPONSOR'S MARK FOR ISRAEL FREEMAN & SON LTD., IMPORT MARK FOR LONDON 1973
One 16cm (6 1/4in) long, the other 11cm (4 1/4in) long
249g (8 oz)

147
A PAIR OF CONTINENTAL SILVER MODELS OF FIGHTING COCKS
SPONSOR'S MARK FOR ISRAEL SEGALOV, IMPORT MARK FOR LONDON 1924
20cm (8in) and 22cm (8 1/2in) long
652g (20.95 oz)

£600-800

148
A PAIR OF SILVER MODELS OF PHEASANTS
SPONSOR'S MARK LAG, LONDON 1977
28cm (11in) and 30cm (12in) long
1991g (64 oz)

£700-1,000



149

149
A COLLECTION OF SILVER BIRD PEPPERETTES AND MENU HOLDERS
To include: a pair of pepperettes, sponsor's mark for Adolph Barsach Davis, London import 1931, 6cm (2 1/4in) long; another similar pair of pepperettes; and a pair of oval menu holders, sponsor's mark L. Neresheimer & Co., import London 1926, formed as fighting cocks, 6.5cm (2 1/2in) long
344g (11.05 oz) gross

£400-600



150

150
A GOLD COLOURED AND JAIPUR ENAMEL MODEL OF AN ELEPHANT
UNMARKED, MODERN
Carrying two figures in a Howdah, inset with diamonds and mounted on a conforming oval base
Size/dimensions: 6.5cm long
Gross weight: 203g

Provenance:
Private Collection

£4,000-6,000

151
A VICTORIAN SILVER GILT DISH STAND
EDWARD & JOHN BARNARD, LONDON 1863
With a beaded border, on four elephant head supports with garnet set eyes
14.5cm (5 3/4in) long
191g (6.15 oz)
With a red cut glass dish

Provenance:
Private Collection

£300-500



151



152

152
A PAIR OF SILVER NOVELTY ELEPHANT
SALT AND PEPPER SHAKERS
 SPONSOR'S MARK TL, LONDON 2009
 AND 2010
 4.5cm (1 3/4in) high
 176g (5.65 oz)

£150-250



153

153
A SILVER COLOURED MODEL OF AN
ELEPHANT
 UNMARKED, 20TH CENTURY
 Mounted on a rectangular jasper base
 15.5cm (6in) long

Provenance:
 Private Collection

£150-250



154

154
A SILVER MODEL OF AN ELEPHANT
 GEORGE PRAGNELL LTD., LONDON 2013
 24cm (9 1/2in) long
 Loaded

Provenance:
 Private Collection

£500-700

155
A SILVER MOUNTED OVAL COASTER
 PATRICK MAVROS, ZIMBAWE, CIRCA 2001
 Modelled as a herd of seven elephants and with a felt lined
 wooden base
 13.5cm (5 1/4in) long
 With a Patrick Mavros box and bag

£1,500-2,500



155

156
TWO SILVER MODELS OF CROCODILES
 PATRICK MAVROS, ZIMBABWE CIRCA 2001
 One walking, one lying
 18.5cm (7 1/4in) and 23cm (9in) long
 917g (29.5 oz)

For a closely related example see Christie's, London,
Christie's Interiors, 9 April 2013, Lot 90

Provenance:
 Private Collection

£300-500



156

157
A MOB OF NINE SILVER MEERKATS
 PATRICK MAVROS, ZIMBABWE CIRCA 2002
 All naturalistically modelled and standing erect
 From 7cm (2 3/4in) to 18cm (7in) high
 2013g (64.7 oz)

Provenance:
 Private Collection

£1,000-1,500



157



158

158
AN ITALIAN SILVER COLOURED MODEL OF A DRAGON
 MARIO BUCCELLATI, 925 STANDARD

Formed as a fire breathing dragon, looming over a gilt pillared building mounted on a hardstone, to a scrolled base and engraved 'Boy I'll be proud of - I'm sure there's no doubt he'll be father'
 38cm (15in) long
 Signed M. Buccellati, Italy

Provenance:
 Private Collection

£3,000-5,000

159
AN ITALIAN SILVER COLOURED CIGARETTE CASE
 MARIO BUCCELLATI, .800 STANDARD
 The cover engraved with a tiger, the interior engraved
 R.A.S. over 12.25.59
 10cm (4in) long
 180g (5.8 oz)

Provenance:
 Private Collection

£300-500



159



160

160
AN ITALIAN SILVER COLOURED MODEL OF A STANDING BOAR
 BUCCELLATI, MILANO POST 1968 .800 STANDARD,
 STAMPED U364
 With wire hair detail
 approximately 36cm high, 75cm long, 35cm wide
 5142g (165.3 oz)

Provenance:
 Private Collection
 For a closely related example see Christie's Geneva, *Magnificent Jewels*,
 16 November 2000, Lot 204, (CHF Fr.15,275 incl. BP).

£2,000-3,000



161

161
A SILVER FROG AND SHELL SALT
 SPONSOR'S MARK WW, SHEFFIELD 2004
 In the form of a frog pulling a shell
 11cm (4 1/4in) long

Together with five matching electro-plated examples
 448g (14.4 oz) weighable

£400-600

162
A SILVER AND PARCEL GILT PRESENTATION SALVER
 STUART DEVLIN, LONDON 1972
 The plain bowl flanked by a border of decorative circles,
 with an engraved inscription to the reverse 'HD JLW
 30th June 1925-1975'.
 23.5cm (9in) diameter
 Approximate weight 339g (10.9 oz)

£300-500



162

163
A SILVER WINE BOTTLE COASTER
 MAPPIN & WEBB, SHEFFIELD 1947
 With twin loop handles, a pierced band and on a circular moulded base
 16cm (6 1/4in) high
 567g (18.25 oz)

Provenance:
 The Estate of a deceased Gentleman

£200-300



163



164

164 Y
A PAIR OF SILVER MOUNTED BOTTLE COASTERS
 SPONSOR'S MARK DB, BIRMINGHAM 1988, RETAILED BY ASPREY
 The wood bases inlaid with flowers
 17cm (6 3/4in) diameter

Please note, Dreweatts has obtained the Article 10 certificate for the
 rosewood in this lot, ref. 24GBA10DOG97]

£200-300



165

165
A SET OF TWELVE HARDSTONE SALTS
 RETAILED BY ASPREY & CO., 20TH CENTURY
 Comprising: three rose quartz, three sodalite, three aventurine quartz,
 two rhodonite and one tigers eye
 6cm (2 1/4in) long
 Each in a fitted case

£400-600



166
A SET OF SEVEN MATCHED SILVER OCTAGONAL CANDLE HOLDERS
 ASPREY & CO. LTD.,
 BIRMINGHAM 1990 (2), 1991 (2), 1992 (2) AND 1993 (1)
 With engine turned decoration
 8cm (3in) high
 Loaded

£600-800



166



167

167
 A SET OF FOUR FRENCH SILVER GILT MOUNTED CHAROITE VASES
 STAMPED ASPREY, ARGENT 925, 1973 EXPORT MARK
 With twin lion mask scroll handles and silver gilt rims
 33cm (13in) high

£3,000-5,000



168 (part lot)

168
 A SILVER AND SILVER GILT TABLE SERVICE FOR
 TWELVE SETTINGS
 ASPREY & CO. LTD, SHEFFIELD 1996 1997
 Comprising:

Twelve table forks, six table spoons, twelve dessert forks, twelve dessert spoons, twelve fish forks, twelve fish knives, twelve soup spoons, twelve tea spoons, twelve coffee spoons, a pair of fish servers, a soup ladle, a pair of sauce ladles
 7066g (227.15 oz)

Together with the following with silver handles and stainless steel blades and fittings:

Twelve table knives, twelve dessert knives, two carving forks, two carving knives, a knife sharpener

In a fitted three drawer cabinet

£6,000-8,000



169

169
 AN 18 CARAT GOLD, ENAMELLED AND DIAMOND SET DESK CLOCK
 SPONSOR'S MARK MM, LONDON 1989

With a gold frame, crystal glass body, manual wind movement, applied with a gold and enamel floral spray, diamond set bezel and hands, green enameled dial, gold easel back
 Size/dimensions: 13cm high
 Gross weight: 338g

Provenance:
 Private Collection

£3,000-5,000



170
 AN 18 CARAT GOLD, ENAMEL AND DIAMOND SET BUTTERFLY CLOCK
 ASPREY & CO. LTD., LONDON 1987

The two 18 carat gold and plique a jour enamelled butterflies set with diamonds, sapphires and rubies, to a gold mounted and diamond set rock crystal base, the clock with a pink guilloché enamel dial, diamond set bezel and Roman numerals, quartz movement, screwed down case back with four screws, mounts and dial signed Asprey
 37cm high

Provenance:
 Private Collection

£5,000-7,000

170

171
A GOLD COLOURED AND DIAMOND SET
MODEL OF A DOG
 STAMPED 750, MODERN
 With tourmaline set eyes and inset with diamonds,
 mounted on a black rectangular plinth
 Size/dimensions: 10cm long
 Gross weight: 436g

Provenance:
 Private Collection

£4,000-6,000



171

172
A YELLOW AND BROWN DIAMOND SET BALD EAGLE
 The eagle with outstretched wings pavé set with brown
 diamonds, to yellow diamond set head and tail, with
 ruby set eyes, appears unmarked, standing upon a rock
 formation with black hardstone base
 Size/dimensions: 11.8cm wingspan

Please note the diamonds are untested for colour
 treatments

Provenance:
 Private Collection

£3,000-5,000



172

173
A 18TH CENTURY TWO COLOUR GOLD BOX
 The rectangular box with canted corners, the lid chased with two
 winged sea horses, griffins, scrolled acanthus leaves, with bird and
 butterfly detail, with later diamond set thumb piece, with guilloché
 borders, stamped with partial control marks and a T to the base
 Size/dimensions: 8.6 x 6.5 x 1.4cm
 Gross weight: 88.4g

£2,500-3,500



173

174
A 9 CARAT GOLD RECTANGULAR CIGARETTE CASE
 ASPREY & CO. LTD., LONDON 1961
 With reeded decoration and sliding cover
 15cm (6in) long
 218g

Provenance:
 Private Collection

£2,500-3,500



174

175
A PAIR OF 9 CARAT GOLD CHAMPAGNE CUPS
 ERNEST J. LOWE, LONDON 1932
 Engraved with a crest and M to H Spt. 6. 1882-
 1952, with knopped stems to circular
 domed pedestal feet with chased
 floral and scroll bands
 9cm (3 1/2in) high
 250g

Provenance:
 Private Collection
 Sale: Christie's, London (South
 Kensington), Kinross House,
 Scotland And Property Removed
 From The London Residence of
 Mrs. Winston Spencer Churchill,
 30 March 2011, Lot 50

£2,500-3,500



175



176

179
A RUBY AND DIAMOND SET PARASOL HANDLE
 UNMARKED
 Inset with ruby and diamond floral sprays and collar
 Size/dimensions: 6cm high
 Gross weight: 37g

Provenance:
 Private Collection

£800-1,200



179

180
A GOLD MOUNTED RIDING CROP
 UNMARKED
 The baluster terminal chased with foliate swags and scrolls, engraved B. Ellam, 243 Piccadilly, London, the central band conforming and engraved with a monogram over 1853 within an oval reserve
 86cm long

£200-300



180

181
A GOLD AND GEM SET SCENT FLACON
 MAKER'S MARK AH, PARTIAL STANDARD MARK
 Inset with a diamond, sapphire and ruby
 Size/dimensions: 8cm long
 Gross weight: 11g

Provenance:
 Private Collection

£250-350



181



177

176
A MOSS AGATE AND GOLD MOUNTED LETTER OPENER
 UNMARKED
 With husk and ribbon swing loop handle and applied flower heads
 Size/dimensions: 12cm long
 Gross weight: 15g

Provenance:
 Private Collection

£300-500

177
A VICTORIAN 9 CARAT GOLD AND AGATE MOUNTED VESTA CASE
 MAKER'S MARK J.T, BIRMINGHAM 1892
 Size/dimensions: 8cm high
 Gross weight: 33g

Provenance:
 Private Collection

£300-500



178

178
A GOLD AND ROCK CRYSTAL SEAL
 UNMARKED, 19TH CENTURY
 With a carved oval cornelian matrix
 Size/dimensions: 7cm high
 Gross weight: 60g

The armorial is for a Cornish family whose name assumes many variants amongst which are: BLIGH(E), BLIGHT, BLYTH(E). All variants appear in the Bodmin district and are linked to the many small villages there.

James BLIGH (1739-1811) married Margaret MARTYN (1743-1838), both were from Bodmin and the family are described as merchants. Their son James Martyn BLIGH (1780-1834) is identified as a gentleman of Bodmin in 1809 married Mary Wyman HOCKEN (1789-1879). They had two sons the first James William BLIGH (1810-1869) a lawyer who emigrated to NSW, Australia and the second son John Pearce BLIGH (1824-1893) who married in 1859 at Liverpool Honora BRADSHAW (born 1841) and emigrated shortly afterwards to Oregon, USA.

Provenance:
 Private Collection

£500-800

182
A 9 CARAT GOLD TEXTURED BOX
S. J. ROSE, LONDON 1976
With a hinged cover
4cm long
29g

Provenance:
Private Collection

£300-500



182

185
A 9 CARAT GOLD MATCHBOOK CASE
JOHN HENRY WYNN, BIRMINGHAM 1926
With engine turned decoration, rectangular vacant
reserve, striker window and suspension loop
6.5cm (2 1/2in) long
20g

Provenance:
Private Collection

£200-300



185



184

183
AN 18 CARAT GOLD VESTA CASE
GOLDSMITHS & SILVERSMITHS CO. LTD., LONDON 1911
The cover engraved D.H.S.R and 1915 to the reverse, with a
suspension loop
6cm (2 1/4in) high
63g

Provenance:
Private Collection

£1,200-1,800



186

186
AN EDWARDIAN 9 CARAT GOLD AND
ENAMELLED VESTA CASE
DEAKIN & FRANCIS, BIRMINGHAM 1905
Enamelled with a circular panel of a snooker
player
and a suspension loop
4.5cm (1 3/4in) high
20g gross

Provenance:
Private Collection

£200-300

184
AN 18 CARAT GOLD VESTA CASE
MAKER'S MARK FOR STEWART DAWSON & CO. LTD.,
OVERSTRIKING THAT OF ANOTHER, BIRMINGHAM 1912
Engraved with a monogram and suspension loop
5cm (2in) high
31g

Provenance:
Private Collection

£300-500



183

187
A GOLD AND ENAMEL OBLONG
VESTA CASE
UNMARKED, CIRCA 1890
Enamelled with a fishing fly, the reverse enamelled C.C.B
6.5cm (2 1/2in) high
63g

Provenance:
Sale: Christie's, An Iberian private collection part II: Furniture, silver,
jewellery, paintings, European, Chinese & Islamic ceramics, 9th
December 2011, lot 598
Private Collection

£600-800



187



188

188
A GOLD VESTA CASE
STAMPED 585
With woven decoration and a sapphire set thumb piece
4cm (1 1/2in) high
30g gross

Provenance:
Private Collection

£400-600



191

191
A 9 CARAT GOLD MATCH STRIKER
IMPORT MARK LONDON 1930
With an engraved scroll border, engine turned
decoration and a suspension loop
4.5cm (1 3/4in) high
18g gross

Provenance:
Private Collection

£200-300



189

189
A 15 CARAT GOLD VESTA CASE
HARDY BROTHERS, BIRMINGHAM 1914
Engraved with linear decoration and a suspension loop
4.5cm (1 3/4in) high
26g

Provenance:
Private Collection

£400-600



192

192
A GOLD COLOURED, SAPPHIRE AND
DIAMOND SET MATCH BOX HOLDER
UNMARKED
The textured body applied with a sapphire
and diamond set three leaf clover
5.5cm long
24g gross

Provenance:
Private Collection

£500-700



190

190
FOUR 9 CARAT GOLD VESTA CASES
To include: an Edwardian circular vesta case by William Lewis,
Birmingham 1903, with a hammered finish, circular vacant reserve and
a suspension loop, 5cm (2in) diameter; an oblong vesta case, maker's
mark obscured, Birmingham 1925, engraved with linear decoration
and a suspension loop, 5cm (2in) high; an oblong vesta case by Henry
Matthews, Birmingham 1920, with engine turned decoration,
engraved CCJ within a circular reserve and with a suspension loop,

6cm (2 1/4in) long; and an Edwardian plain square vesta case by
William Neale, Chester 1905, 4cm (1 1/4in) wide
86g gross

Provenance:
Private Collection

£1,000-1,500

193
A FRENCH NEPHRITE, GOLD AND RUBY SET
VESTA CASE
19TH CENTURY
The polished nephrite case with etched base,
reeded gold bands, with cabochon ruby thumb
piece, the loop with French eagles head poinçon
5.2cm x 2.6cm x 0.9cm

Provenance:
Private Collection

£300-500



193



194

194
 A SILVER AND ENAMEL VESTA CASE
 STAMPED TWICE WITH A THREE LEAF
 CLOVER
 With green guilloche enamel, a white and
 gilt reed and stitch band, and a diamond set
 thumb piece
 5cm (2in) high
 45g (1.45 oz) gross

Together with a gunmetal vesta case, inset
 with three diamonds and cabochon sapphire
 set thumb piece, 5cm (2in) high

Provenance:
 Private Collection

£300-500

195
 THREE VICTORIAN SILVER CIGAR RELATED ITEMS

To include: a Victorian novelty double ended tobacco box by Sampson Mordan, London 1882,
 modelled as a cigar, 11cm (4 1/4in) long; a Victorian cigar case by Benjamin Barling, Birmingham
 1862, with engine turned decoration, two shell clips and a vacant cartouche, 12cm (4 3/4in) long;
 and a Victorian vesta case by William Neale & Son, Birmingham 1891, modelled as four cigars
 and engraved Havana, 4.5cm (1 3/4in) high
 88g (2.8 oz) gross

Provenance:
 Private Collection
 Sale: Sotheby's, New York, Important English &
 Continental Silver & Objects of Vertu,
 Part Lot 95

£250-350



195



196

196
 MARIN, A SILVER CIGARETTE CASE
 CIRCA 1930S
 The rectangular case with engraved designs,
 the lid decorated with gold studs, signed
 Marin Paris, stamped with maker's mark and
 French poinçons
 10cm (4in) long
 159g (5.1 oz)

£100-150





197

197
A PINCHBECK CHATELAINE
 MID 18TH CENTURY

Chased with reclining nudes, flowers and C-scrolls, suspending two thimble cases and an etui, the thimble cased chased with cherub masks and C-scrolls, the etui with cherubs, shells and C-scrolls, opening to a pair of scissors, a pen knife and two spoons
 Dimensions: 20cm long

Provenance:
 Private Collection

£300-500



198

198
A 19TH CENTURY GOLD AND ENAMEL FIGURE OF A CHRIST AND THE LAMB OF GOD
 UNMARKED

Modelled as Jesus holding the lamb of God in a book in his right hand, a suspension loop to his back, mounted on an associated lapis lazuli base
 7cm (2 3/4in) long

Provenance:
 Private Collection

£500-700



199

199
A SILVER GILT AND GEMSET RECTANGULAR COMPACT
 STAMPED 800

The cover applied with a pierced floral panel set with various precious and semi precious gemstones including, rubies, sapphires, green beryl, tourmaline, peridot, zircon, garnets and amethysts, the base engraved with foliate swags, opening to a mirror
 Dimensions: 8cm long

Provenance:
 Private Collection

£300-500

200
A VICTORIAN SILVER AND ENAMEL BOOK FORM VESTA CASE
 LAWRENCE EMANUEL, BIRMINGHAM 1886
 The cover engraved J. B. Pewtress 1888, the body enamelled 'It all ends in' and a cigar
 4cm (1 1/2in) high

Together with another Victorian silver and enamel vesta case by Lawrence Emanuel, Birmingham 1886, enamelled with 'Just one more' and a pipe,
 4.5cm (1 3/4in) high
 48g (1.55 oz) gross

Provenance:
 Private Collection
 Sale: Sotheby's, New York, Important English & Continental Silver & Objects of Vertu, Part Lot 95

£400-600



200



201



201
AN EDWARDIAN SILVER AND ENAMEL VESTA CASE
 MAKER'S MARK OBSCURED, BIRMINGHAM 1904
 Enamelled with Old Friends above a beer and a pipe, the reverse engraved Martin Bishop. from W. H. Bailey
 Size/dimensions: 4cm high

Together with a Victorian silver and enamel vesta case by Cornelius Desormeaux Saunders & James Francis Hollings (Frank) Shepherd, London 1887, enamelled with When ordering 'Bass' insist on seeing the label
 Size/dimensions: 4.5cm (1 3/4in) long
 Gross weight: 58g (1.85 oz)

Provenance:
 Private Collection
 Sale: Sotheby's, New York, Important English & Continental Silver & Objects of Vertu, Part Lot 95

£300-500

202
THREE SILVER AND ENAMEL VESTA CASES
 To include: a Victorian vesta case by Rolason Brothers, Birmingham 1897, enamelled with a bulldog within an oval reserve, the reverse engraved WST Bulldog every time you strike. Xmas 1905, 5.5cm (2 1/4in) high; an Edwardian vesta case by Deakin & Francis Ltd., Birmingham 1902, enamelled with a bulldog, 5cm (2in) high; and a Victorian vesta case by Harrison Brothers & Howson, London 1896, the cover enamelled with a terrier, the base engraved AEE and with another scored out monogram, 4.5cm (1 3/4in) long
 100g (3.2 oz) gross

Provenance:
 Private Collection
 Sale: Sotheby's, New York, Important English & Continental Silver & Objects of Vertu, Part Lot 87

£300-500



202



203

203
TWO VICTORIAN SILVER AND ENAMEL VETA CASES
 GEORGE UNITE & SONS, BIRMINGHAM 1884
 Enamelled with a Bullmastiff, the other a Jack Russell, and each with a suspension loop
 6cm (2 1/4in) high
 62g (2 oz)

Provenance:
 Private Collection
 Sale: Sotheby's, New York, Important English & Continental Silver & Objects of Vertu, Part Lot 87

£300-500



206



207



208

204
A VICTORIAN SILVER AND ENAMEL VETA CASE
 SAMPSON MORDAN & CO., LONDON 1896
 With an enamelled panel of eight hounds
 4.5cm (1 3/4in) high

Together with a similar Edwardian silver and enamel veta case by Sampson Mordan & Co., London 1901, enamelled with a matching panel of hounds, the reverse engraved J. W. Emerson, 6cm (2 1/4in) long

Provenance:
 Private Collection

Sale: Sotheby's, New York, Important English & Continental Silver & Objects of Vertu, Part Lot 87

£400-600



204

205
A VICTORIAN SILVER AND ENAMEL BOOK FORM VETA CASE
 HORTON & ALLDAY, BIRMINGHAM 1886
 The cover enamelled with a dog with its head stuck in a jug, titled 'Jugged Puppy' by permission Stanley Berkeley
 4.5cm (1 3/4in) long

Together with a similar Victorian rectangular veta case by Sampson Mordan & Co., London 1890, with a suspension loop and enamelled with the same scene, 5.5cm (2 1/4in) long
 70g (2.25 oz) gross

Provenance:
 Private Collection
 Sale: Sotheby's, New York, Important English & Continental Silver & Objects of Vertu, Part Lot 87

£400-600



205

206
AN EDWARDIAN SILVER AND ENAMEL VETA CASE
 JOHN MILWARD BANKS, BIRMINGHAM 1902
 Enamelled with a jockey on horseback and W. Davies, with a suspension loop
 9cm (3 1/2in) high
 90g (2.9 oz)

Provenance:
 Private Collection

£250-350

207
A GEORGE III SILVER MOUNTED AGATE BOX
 UNMARKED
 The polished baluster shaped box with reeded silver trim
 Size/dimensions: 6.5cm long

Provenance:
 Private Collection

£250-350

208
A WILLIAM IV SILVER OBLONG TABACO CASE
 JOHN TEARE, LONDON 1831
 With engine turned decoration, engraved with a crest within a circular reserve and a presentation inscription
 11.5cm (4 1/2in) long
 109g (3.5 oz)

£100-150



209



210



211

209
A SILVER AND GLASS SHIPS LANTERN
VESTA CASE
SAMUEL JACOB, LONDON 1897
With a swing loop handle and engraved port,
opening to a wood liner and a striker
8.5cm (3 1/4in) high

Provenance:
Private Collection

£300-500

210
A VICTORIAN SILVER NOVELTY CREEL
FORM VESTA CASE
THOMAS JOHNSON II, LONDON 1882
With basket weave decoration, the cover
with a worn inscription, opening to a reverse
carved intaglio crystal oval plaque of two trout
5.5cm (2 1/4in) long

Provenance:
Private Collection
Sale: Sotheby's, New York, Important English
& Continental Silver & Objects of Vertu, Part
Lot 95

£700-1,000

211
A SWISS GOLD AND ENAMELLED
VINAIGRETTE
GENEVA UNDER FRENCH OCCUPATION,
UNIDENTIFIED MAKER'S MARK JGB, 1798-
1809 LITTLE GUARANTEE MARK
The cover enamelled with a rose and daisy to
a grey ground, translucent blue enamel over
peacock feather engine turned decoration
and foliate chased border, opening to a
pierced grill
Size/dimensions: 4cm long
Gross weight: 15g

Provenance:
Private Collection

£500-800





212



213



214



215

212

A FRENCH GOLD AND ENAMEL CASE IN THE FORM OF A FISH
1809-1819 LITTLE GUARANTEE MARKS

Inset with seed pearls and onyx, with a fitted shagreen case

Size/dimensions: 9cm

Gross weight: 21g

Provenance:

Private Collection

£800-1,200

213

A FRENCH CHINOISERIE GOLD AND ENAMELLED SNUFF BOX
JOSEPH BENJAMIN CAILLEZ, PARIS, CIRCA 1830

The cover enamelled with a female figure on a swing between two pagodas, within a shell and C-scroll border, the body and base enamelled with floral sprays

Size/dimensions: 6cm

Gross weight: 46g

Provenance:

Private Collection

Purchased: D. S. Lavender, London August 2003

£3,000-5,000

214

A 19TH CENTURY ENGLISH GOLD AND ENAMELLED ALAMANAC CASE

UNMARKED, ATTRIBUTED TO ALEXANDER J. STRACHAN, CIRCA 1830

Chased and enamelled with birds among C-scrolls and floral sprays

Size/dimensions: 6cm high

Gross weight: 53g

Provenance:

Private Collection

Purchased: D. S. Lavender, London August 2002

£2,000-3,000

215

A GEORGE III 18 CARAT GOLD BOX
ALEXANDER J. STRACHAN, LONDON 1809

With engine turned decoration and a later applied diamond and sapphire with inclusions resembling the Union Jack

Size/dimensions: 9cm long

Gross weight: 167g

Provenance:

Private Collection

The box purchased: S. J. Phillips, London, August 2003

The sapphire Union Jack, stated to weigh 28.67 carats, also supplied and fitted by S. J. Phillips, August 2003

£3,000-5,000



216

216 Y
A PORTRAIT MINIATURE OF FREDERICK IV, PRINCE OF SALM-KYRBURG IN LATER SILVER FRAME

The oval miniature of the prince in red military uniform with high black collar, wearing various badges of order, and silvered epaulettes, within a silver frame with scrolled engraved corners, the reverse inscribed *F.E.O Prince de Salm Kyrburg, 1789 + 1835 in uniform de*, the back stand with French silver post 1893 import poincon
 Size/dimensions: frame 5.6 x 7.2cm
 Gross weight: 57.0 grams

Please note Dreweatts have applied for a de minimis exemption licence for the ivory in this lot Ref: 5UDA628B

£800-1,200



217

217 Y
AN EARLY 19TH CENTURY ENAMELLED GOLD BOX WITH THE PORTRAIT OF BERNHARD VON LINDENAU
 CIRCA 1797, UNIDENTIFIED MAKER'S MARK

The rectangular box with a miniature portrait to the lid of Bernhard von Lindenau gazing at a star after Giuseppe or Josef Grassi, the base of the box with enamelled pictorial horoscope with demi lioness and foliate decoration to the corners, the sides with scrolled acanthus leaves, flowers and grotesque decoration, stamped with Paris 1797 poincon, France 1798-1809 little guarantee mark, and a lozenge shaped maker's mark
 Size/dimensions: 6 x 5 x 1.8cm
 Gross weight: 105.5g

Please note Dreweatts have applied for a de minimis exemption licence for the ivory in this lot Ref: LY3CRM72

£2,500-3,500



218

218
AN EARLY 19TH CENTURY ENAMELLED GOLD BOX
 POSSIBLY HANAU

The rectangular box with canted corners, the lid enamelled with Apollo, Hera and Aphrodite, within a blue and white enamelled border with swags, scrolls and floral decoration, the sides with blue latticed and white enamel borders, columns corners, the base with similar enamelled decoration, with Paris 1819-1838 small gold and silver imported items poincon, 18K mark and further rubbed stamps
 Size/dimensions: 9 x 6.4 x 1.7cm
 Gross weight: 111.2g

£3,000-5,000

219
FIRST HALF OF THE 19TH CENTURY, A GOLD AND DIAMOND ROYAL PRESENTATION BOX
 HANAU, CARL MARTIN WEISHAUP & SOHNE

The shaped rectangular gold box with chased scrolled floral decoration to the lid, with rose cut diamond accents and Royal insignia, possibly that of Ferdinand VII of Spain, blue enamel detail, the undulating sides decorated with scrolling ivy leaves, with a similarly decorated base, stamped 14 CMWS with 2078 inventory number
 Size/dimensions: 10 x 8.1 x 3cm
 Gross weight: 171.9g

£6,000-9,000



219

220 Y
A SWISS TORTOISESHELL AND ENAMEL SINGING BIRD BOX OR OISEAUX CHATANT
 CIRCA 1900, UNSIGNED BUT PROBABLY BY BONTEMS, RETAILED BY SEARLE HOARE AND COMPANY, LONDON

The five pillar single going barrel movement with transverse multiblade fly and mechanism to drive the automaton, bellows and tune mechanism for the bird with natural plumage and bone beak, concealed within scroll engraved and pierced gilt brass fretwork infill beneath a hinged oval enamel panel painted with a Rhineland river landscape with a castle to exterior and rose blooms on a French blue ground to interior, on activation via a gilt brass slide to the front of the box, the cover hinges open and the bird pops-up to flap its wings, open and close its beak, and pirouette whilst accompanied by a multi-note call emulating from within the box, the exterior with hinged flap for snuff/key storage to rear and winding square to underside, in blue velvet and silk lined gilt tooled Morocco presentation case inscribed in gilt SEARLE, HOARE & Co., 87, KING WILLIAM STREET, LONDON. E.C. to the inside of the lid.
 The music box 10 x 6.5 x 4cm

Provenance:

Property of a gentleman. Originally purchased by the current owner's ancestors, thence by descent.

Very little appears to be known about Searle Hoare and Company except that that they were listed as 'Trophy Cup Jewellers and Silversmiths' based in King William Street, London when their silver maker's mark was registered in 1910/11.

£1,500-3,000



220



221

221
A 19TH CENTURY BLACK MARBLE AND MICROMOSAIC PAPERWEIGHT

The shaped black marble panel with a micromosaic view in St Peter's Basilica, within a polished malachite border 17.8 x 13.2cm

Provenance:
 Private Collection

£800-1,200

222 Y
A TORTOISESHELL AND MICROMOSAIC BOX
 19TH CENTURY

The rectangular micromosaic panel of a watermill within a pastoral scene, gold border, inset into rectangular tortoiseshell box
 Dimensions: 8cm long

Provenance:
 Private Collection

£2,000-3,000



222

223 Y
A TORTOISESHELL AND MICROMOSAIC BOX WITH HEN AND CHICKS
 19TH CENTURY

The circular micromosaic panel of a hen and five chicks within a gold border
 Dimensions: 9cm diameter

Provenance:
 Private Collection

£700-1,000



223

224
A SET OF THREE ITALIAN GLASS PLAQUES SET WITH MICROMOSAICS
 19TH CENTURY

Each depicting scenes of Rome, including the Tomb of Cecilia Metella, Castello San' Angelo, the Colosseum and the Pantheon
 Dimensions: 6.5cm and 10cm long

Provenance:
 Private Collection
 Sale: Christie's, London, Centuries of Style, 10 June 2010, Lot 298

£2,000-3,000

225
A GOLD BOX MOUNTED WITH A MICROMOSAIC OF THE TEMPLE OF THE CLITUMNUS STAMPED SPD AND 14, 19TH CENTURY

The cover inset with a micromosaic of the Temple Of The Clitumnus, engraved with a foliate swag band and engine turned decoration
 Size/dimensions: 7cm long
 Gross weight: 81g

The Temple of Clitumnus is a small 6th century Christian Church in Umbria. It was built during the Kingdom of the Lombards in Italy (568-774 A.D.) on the Via Flaminia, next to the banks of the River Clitunno. It is constructed from ancient Roman building materials, which made Renaissance scholars believe it must have been the remains of the Temple to Jupiter Clitumnus as mentioned by Pliny.

Provenance:
 Private Collection

£3,000-5,000



225

226
A 19TH CENTURY ITALIAN MICROMOSAIC GOLD BOX
 ROME 1815-1870

The rectangular box with a micromosaic lid of a white bear with a charging liver and white hound, with pressed gold foliate surround, with floral micromosaic sides, the base with a water fountain with various native birds comprising a goldfinch, a white dove, nightingale and a further dove, stamped with a Papal gold mark
 Size/dimensions: 7.1 x 5.1 x 2.3cm
 Gross weight: 204.7 grams

Provenance:
 Private Collection

£3,000-5,000



224



226



227



228

227
A GOLD AND MICROMOSAIC CLASP
 UNMARKED, 19TH CENTURY
 Engraved to the reserve 'Temple de Venus, Tableau par Claude Lorraine a Rome dans la Galerie de M. Le Prince Rospiglias, V. Verdejo f'
 Size/dimensions: 5cm high
 Gross weight: 24g

Provenance:
 Private Collection

£2,000-3,000

228
A GOLD BROOCH MOUNTED MICROMOSAIC OF THE DOVES OF PLINY
 19TH CENTURY
 Showing four doves seated on the rim of a water bowl, the gold brooch frame with ropetwist decoration
 Size/dimensions: 5cm long
 Gross weight: 30g

Provenance:
 Private Collection
 Purchased: S. J. Phillips, London, June 007

£2,000-3,000

229
A GOLD MOUNTED MICROMOSAIC PANEL OF THE CASCATA DELLE MARMORE
 UNMARKED, 19TH CENTURY
 With two figures in the bottom left corner, mounted in a gold frame with a bow and ropetwist border
 Size/dimensions: 8cm long
 Gross weight: 73g

Provenance:
 Private Collection

The Cascata delle Marmore is the largest man made waterfall in the world. In 271 B.C. the Roman consul Manius Curius Dentatus commanded that stagnant water should be diverted from wetlands near the city of Rieti into the Nera River below, thereby creating the waterfalls. New canals and waterfall leaps were added by various Popes in the 15th, 16th and 18th centuries.

£3,000-5,000



229

230
A GOLD MOUNTED MICROMOSAIC OF A PASTORAL SCENE
 UNMARKED, 19TH CENTURY
 The pastoral scene after Claude Lorraine, the gold frame engraved Right Honourable Sir William Drummond *1827*, in a fitted case
 Size/dimensions: 8.5cm long
 Gross weight: 80g

Sir William James Charles Maria Drummond of Logiealmond (1769 - 1828) was a Scottish MP and diplomat. He was elected to Parliament in 1795 and became British Ambassador to the Ottoman Empire in 1803. He was Envoy to the Court of Naples in 1801, and again from 1806 to 1809. He died in Rome in 1828.

Provenance:
 Private Collection

£8,000-12,000



230



227



232



233

231
AN EARLY 19TH CENTURY MICROMOSAIC VINAIGRETTE

Of oval form, the lid inset with a micromosaic of a recumbent red and white spaniel within a coastal scene, opening to a pierced floral and foliate grill, unmarked
Size/dimensions: 4.7 x 4.1 x 1.1cm
Gross weight: 58.6 grams

Provenance:
Private Collection

£2,500-3,500

232
A FRENCH GOLD AND MICROMOSAIC OVAL VINAIGRETTE

NICHOLAS-FRANCOIS DEMOGET, PARIS 1798-1809
The cover inset with a micromosaic panel of a spaniel, chased foliate and engine turned decoration, opening to a pierced and engraved foliate grill
Size/dimensions: 3.5cm long
Gross weight: 20g

Provenance:
Private Collection

£2,500-3,500

233
AN EARLY 19TH CENTURY MICROMOSAIC VINAIGRETTE
GEORGE REMAND, GENEVA, CIRCA 1815

Of rectangular form, the lid inset with a micromosaic of a recumbent red and white spaniel within a mountainous scene, opening to a pierced scrolled foliate and flower basket grille, with France 1809-1819 little guarantee mark
Size/dimensions: 3.6 x 2.9 x 1.4cm
Gross weight: 35.3 grams

Provenance:
Private Collection

£3,000-4,000



234



235



236



237

234
A MICROMOSAIC PANEL OF A SPANIEL
19TH CENTURY

The oval panel of a spaniel with two birds,
lying beside a river scene
Dimensions: 4cm long

Provenance:
Private Collection

£800-1,200

235
A TORTOISESHELL, GOLD AND
MICROMOSAIC BOX
UNMARKED, 19TH CENTURY

The cover with a chased acorn border, inset
with a rectangular micromosaic panel of a
spaniel with two birds, within a gold border, a
chased shell and foliate scroll border
Size/dimensions: 9cm long

Provenance:
Private Collection
Sale: Sotheby's, Mellon Jewelry, 20th
November 2014, Lot 176

£2,000-3,000

236
A FRENCH GOLD AND MICROMOSAIC
OVAL VINAIGRETTE
NICHOLAS-FRANCOIS DEMOGET, PARIS
1798-1809

The cover inset with a micromosaic panel
of a pug, chased foliate and engine turned
decoration, opening to a pierced and
engraved foliate grill
Size/dimensions: 3.5cm long
Gross weight: 21g

Provenance:
Private Collection

£2,500-3,500

237
AN EARLY 19TH CENTURY ITALIAN MICROMOSAIC PLAQUE OF A KING CHARLES SPANIEL
IN THE MANNER OF ANTONIO AGUATTI (ITALIAN, D. 1846), CIRCA 1830

The rectangular plaque set in copper, with the black, white and tan dog drinking from a bowl within
a wildflower scene, including wild pansies, cowslips and forget me nots, with a lizard to the centre
foreground, mounted within a silk lined tooled leather presentation case
Dimensions: 8cm long, case 7.5x 10cm

Provenance:
Private Collection

£6,000-10,000

SIBYL COLEFAX

&

JOHN FOWLER

A COLLECTION FROM THE PIMLICO ROAD SHOWROOM
AND A PRIVATE LONDON HOUSE

AUCTION | NEWBURY | 20 FEBRUARY

Enquiries: housesales@dreweatts.com 01635 553 553

dreweatts.com
NEWBURY | LONDON



DREWEATTS
EST. 1759

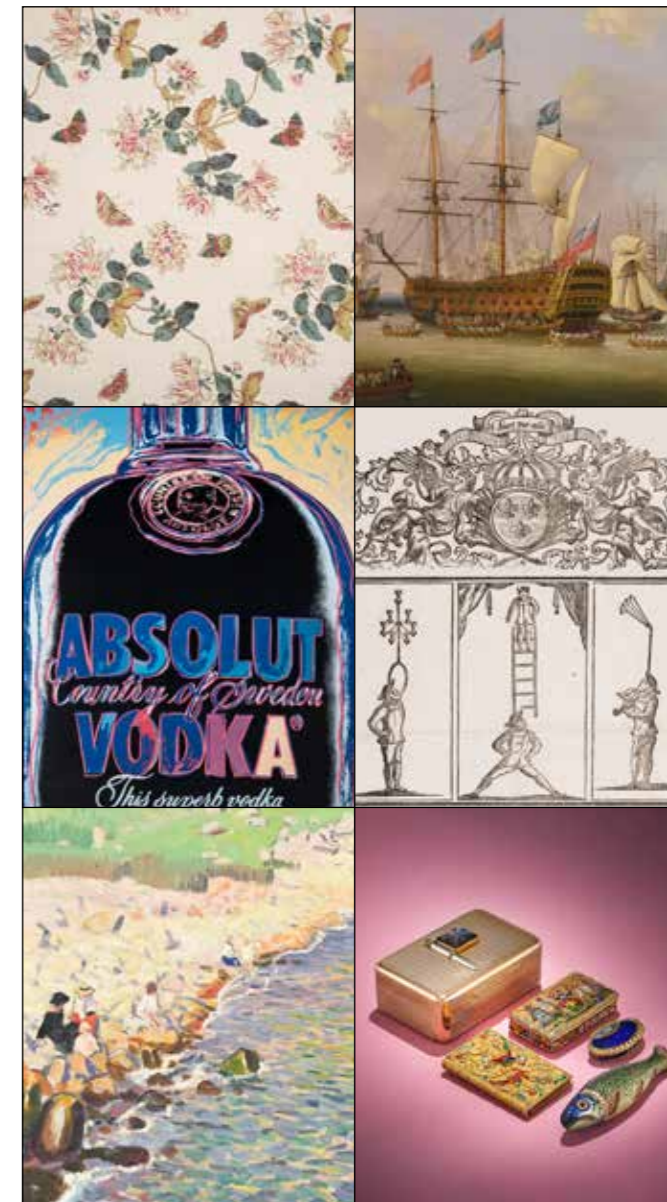
COMING UP AT DREWEATTS & FORUM AUCTIONS

- 30 January | Forum Auctions
Fine Books, Manuscripts and Works on Paper
- 5 February | Forum Auctions
Modern & Contemporary Art and Editions
- 6 February | Dreweatts
Art & Interiors
- 11 February | Dreweatts
Old Master, British and European Art
- 19 February | Dreweatts
Fine Silver and Objects of Vertu
- 20 February | Dreweatts
Colefax and Fowler: A Collection from the Pimlico Road Showroom and a Private London House
- 25 February | Dreweatts
Fine Wine, Champagne, Vintage Port and Spirits
- 26 February | Forum Auctions
The Art of Music: Bob Dylan and Rock 'n' Roll Icons
- 27 February | Forum Auctions
The Ricky Jay Collection
- 4 March | Dreweatts
Single Owner Collection
- 6 March | Dreweatts
Art & Interiors
- 12 March | Dreweatts
Modern & Contemporary Art
- 13 March | Dreweatts
Art on a Postcard International Women's Day Auction
- 19 March | Dreweatts
The Mastery of Fabergé, Jewellery and Object of Vertu
- 19 March | Dreweatts
Fine Jewellery
- 20 March | Dreweatts
Fine Watches, Pens and Luxury Accessories
- 25 March | Dreweatts
Fine Clocks, Barometers And Scientific Instruments

NOW INVITING ENTRIES

If you have an item you would like valued for sale at auction, we would be delighted to provide you with a free, no obligation estimate. Contact us to arrange an in-person appointment or visit our website to see how to submit the information online.

DREWEATTS
EST. 1759



dreweatts.com
info@dreweatts.com
NEWBURY
01635 553 553
LONDON
020 7839 8880

forumauctions.co.uk
info@forumauctions.co.uk
LONDON
020 7871 2640

 **Forum**
Auctions

IMPORTANT NOTICES TO WATCH BUYERS

DAMAGE, RESTORATION, ALTERATION

Although every effort is made to note any damage, restoration or alterations, the absence of any such information in catalogue descriptions does not imply the lot is in perfect condition and free from any such defects. Prospective buyers should satisfy themselves as to the condition of any lot prior to bidding. All watches are serviced from time to time, and Dreweatts are unable to guarantee that the working parts of any watch movement, glass or crystal, winding crowns, watch bracelet, strap or buckle are the manufacturers' original parts, unless otherwise stated in the catalogue description. We are unable to make any representation in our catalogue descriptions or condition reports as to the authenticity of such parts. Dreweatts are unable to make any representation, nor make any comment on, the authenticity of diamonds, or other gemstones, set into watch dials, bezels, cases and bracelets.

AUTHENTICATION

All watch movements have been inspected by Dreweatts watchmaker and specialists, and we have verified all inventory and movement numbers. For the information of potential bidders, all inventory and movement numbers are listed in the catalogue description for the relevant lot.

IMPORTANT NOTICES TO JEWELLERY BUYERS

DAMAGE, RESTORATION, ALTERATION

Although every effort is made to note any damage, restoration or alterations, the absence of any such information in catalogue descriptions does not imply the lot is in perfect condition and free for any such defects. Prospective buyers should satisfy themselves as to the condition of any lot prior to bidding.

ENHANCEMENT

Prospective bidders should be aware that many coloured gems have been historically treated by a variety of methods to improve their appearance, both in terms of colour and transparency. Rubies and sapphires are routinely heat treated, emeralds are enhanced through the use of coloured and transparent oils and resins, and jadeite is routinely stained. These treatments, and others including irradiation and coating, are generally accepted by the jewellery trade as standard practice. Although most treatments are considered to be permanent, those gemstones which have been oiled may need to be re-treated to maintain their appearance. Any such treatments affect the market value of coloured gemstones, and Dreweatts pre-sale estimates published in the catalogue assume that all gemstones, unless otherwise stated in the catalogue, may have been enhanced. Dreweatts may obtain Gemmological Reports from a recognised laboratory where appropriate detailing any enhancements, or lack of, for certain gemstones, and such reports may be obtained for prospective bidders prior to the sale, provided such requests are made at least three weeks before the sale, and that the requesting party has pre-paid for such a report. However it is not possible for Dreweatts to obtain reports for every stone offered in the sale.

In the absence of a gemmological laboratory report, it is not possible for Dreweatts to make any comment on the possibility that any gemstone in any lot may have been subject to enhancement.

Dreweatts catalogue descriptions and condition reports adhere to the guidelines laid out in the 'Blue Book' of CIBJO, the International Jewellery Confederation.

IMPORT/EXPORT RESTRICTIONS

There may be Import Restrictions into some territories outside the United Kingdom placed on certain watch brands, or on the importation of watches with straps composed of animal skins which may fall under CITES Regulations. It is the sole responsibility of the buyer to comply with all Export/Import regulations and potential bidders are strongly recommended to check with their shipping agent as to any such regulations that may apply to any lot. Dreweatts are not shippers and are unable to offer any advice regarding such regulations.

CONDITION REPORTS

Dreweatts condition reports will identify whether a watch functions at the time of cataloguing, and suggest possible, but not comprehensive, restoration work that may need to be carried out for the watch to function properly. Dreweatts are unable to test watches for accuracy or running to time, and we cannot guarantee that any watch will function when purchased from us.

As we have examined all watch movements by removing the case backs, we cannot guarantee that water resistant watches will remain water resistant following purchase from us. Dreweatts recommend that any watch purchased from us is subsequently overhauled by a competent watchmaker to ensure proper functioning.

WEIGHTS

All gram weights have been obtained using an electronic balance, but weights stated in the catalogue are approximate and for guidance only, and potential bidders should satisfy themselves as to their accuracy. '...approximately 1.20 carats total,...' all such stone weights are estimated using standard equipment and formulae, and are subject to the limitations imposed by the mount.

'...weighing 1.20 carats,...' where the description reads as such, the stones in question have been removed from the mount and weighted using an electronic balance.

SIGNATURES

'...by Lacluche,...' in our opinion is a piece made by or for the jeweller, bearing relevant signatures, maker's marks, and where appropriate, the maker's inventory number/s.

'...signed Lacluche,...' in our opinion is a piece retained by the jeweller, but not necessarily made by them. This may also mean that the piece has been mounted by the jeweller using stones supplied by the client; a special commission from a client's design; or has been altered or later added to.

COLOURED STONES OF BURMA (MYANMAR) ORIGIN

Buyers should be aware that certain territories (notably the United States of America) have import restrictions on certain coloured gemstones. All gemstones that maybe of Burma (Myanmar) origin, notably rubies and jadeite, may require a certificate of origin before they can be imported. Prospective bidders for such gemstones should check with their shipper, and relevant Government authorities regarding any necessary certification prior to bidding. Whilst Dreweatts are able to suggest a number of Gemmological Laboratories for such certification, we are unable to carry out any such certification for potential bidders or buyers.

Detailed condition reports for all lots are available from our website www.dreweatts.com, and upon direct request to the Saleroom.

Please note that Dreweatts are unable to give verbal condition reports for any lot, and all condition reports will be given in writing via our website www.dreweatts.com. Dreweatts jewellery specialists and qualified gemmologists are available during the view to answer any queries.

Dreweatts are unable to offer any form of packing, dispatch or shipping services, and clients should make their own collection arrangements for purchased lots. Dreweatts are happy to suggest the services of a number of dispatch and shipping carriers.

Please see [Conditions of Business and Conditions of Sale on the following pages](#).

Dreweatts & Dreweatts 1759 are trading names of Dreweatts 1759 Ltd. Dreweatts 1759 Ltd is registered in England, company number: 10758982, registered office: C/O Bishop Fleming LLP, 10 Temple Back, Bristol, BS1 6FL.

IMPORTANT NOTICES

BUYING AT DREWEATTS

There are several ways you can bid at a Dreweatts auction; in person, by leaving a commission or absentee bid, on the telephone where available and live via the internet – please make arrangements before the sale. THIS NOTICE APPLIES ONLY TO A PERSON WHO WISHES TO BID IN PERSON, OR BY LEAVING A COMMISSION OR ABSENTEE BID, AT A DREWEATTS PUBLIC AUCTION. For bidding at an online auction or for online bidding at a public auction please see our Online Auction Terms published on our website at www.dreweatts.com.

BIDDING IN PERSON

If intending to buy you are required to register your name and details at reception prior to the commencement of the auction. You will be required to provide a proof of identity and address to register for bidding. You will then be allocated a bidding number, which you use when bidding for an item.

COMMISSION BIDS

Dreweatts will execute bids on your behalf if you are unable to attend the sale. Commission or absentee bids are accepted either directly at reception, or can be sent by post, fax, email, telephone or via the website: www.dreweatts.com.

Dreweatts will add these bids to the auctioneers' sale book and will undertake to purchase the lots on your behalf as cheaply as allowed by other bids and reserves. If two buyers submit identical commission bids Dreweatts may prefer the first bid received.

Dreweatts does not accept liability for failing to execute commission bids, or for any errors or omissions.

CONDITION

Bidders must satisfy themselves as to the condition of each lot. Condition reports are available on request – see the Conditions of Business at the back of this catalogue forming part of these Auction Terms and Conditions for more information regarding condition reports. Requests for condition reports must be submitted by 4pm on the day prior to the auction; condition reports may be available alongside the lot description on the online catalogue at: www.dreweatts.com.

COMMISSION CHARGES

All purchases are subject to a buyer's premium, which is charged per lot at 26% of the hammer price (31.2% including VAT) up to and including £20,000, 25% (30% including VAT) of the hammer price from £20,001 up to and including £500,000, 20% (24% including VAT) of the hammer price from £500,001 up to and including £1,000,000 and 12.5% of the hammer price (15% including VAT) in excess of £1,000,000. A theta symbol (θ) indicates that the lot is a zero rated item and therefore not subject to VAT on the buyer's premium. This applies to bound books (manuscripts and printed), unframed maps and albums. In the event the lot has a dagger (†) beside the lot number in the catalogue, this indicates that the lot is owned by an entity or company required to pay VAT (generally not an Antique Dealer, as they operate under a dealers margin scheme). VAT is payable at 20% on the Hammer Price. Lots marked with a double dagger (‡) (presently a reduced rate of 5%) or Ω (presently at standard rate of 20%) have been imported from outside the UK under Temporary Admission regime and therefore the buyer must pay the import VAT at the appropriate rate on the duty inclusive hammer price.

PAYMENT

Payment will be accepted, if you are a successful bidder, by debit card

issued in the name of the Buyer by a UK bank and registered to a UK billing address; by all major UK issued credit cards issued in the name of the Buyer and registered to a UK billing address with the exception of Diners Club; by bank transfer direct into our bank account, Bank Details: NatWest, 30 Market Place, Newbury, Berkshire RG14 5AG. Account Name: Dreweatts 1759 Ltd. A/C: 62412949, Sort Code: 60-15-07, BIC: NWBKGB2L, IBAN: GB21NWBK60150762412949. The name of the bank account holder should match the name of the buyer. First time buyers who are not present at the saleroom are requested to pay by bank transfer.

Υ CITES REGULATIONS

Please note that lots marked with the symbol (Υ) in this catalogue may be subject to CITES Regulations when exported. Relevant CITES Regulations may be found at www.gov.uk/guidance/cites-imports-and-exports.

COLLECTION OR DELIVERY

Before being able to collect your purchases you are required to pay the hammer price, plus the applicable commissions, and obtain a receipt acknowledging payment. Collection of the purchased lots is at the purchaser's risk and expense and whilst Dreweatts do not provide packing and despatch service we can suggest some carriers.

Dreweatts also require that all purchased items are collected within four working days of the sale to avoid a storage charge being applied.

STORAGE CHARGES

All items not collected by 4pm, within four working days of the sale, will be automatically removed to commercial storage and subject to a minimum storage charge of £20 (plus VAT) per lot and to a further storage charge of £3 (plus VAT) per lot per part or full day thereafter. These charges will be the sole liability of the purchaser and will be billed directly to them by Sackville-West Moving & Storing; Sackville-West Moving & Storing may be willing to adjust their charges if they are instructed by the purchaser to deliver to them. On payment of all sales and storage costs, items will be available for collection by appointment from Sackville-West Moving & Storing (Andover), tel: + 44 (0) 2080 909988, email: office@sackvillewest.co.uk. These charges are set by Sackville-West Moving & Storing; we recommend that you contact them directly regarding queries relating to these charges and other questions relating to storage. Staff at the saleroom will be unable to answer questions relating to items that have been removed from the saleroom.

FURTHER INFORMATION

The colours printed in this catalogue are not necessarily a true reflection of the actual item. All weights and measures given in the catalogue should be regarded as approximate.

VALUATION SERVICES

Dreweatts provides a range of confidential and professional valuation services to private clients, solicitors, executors, estate managers, trustees and other professional partners. These services include auction valuations, insurance valuations, probate valuations, private treaty valuations, valuations for family division or for tax purposes. For more information, please see our website: www.dreweatts.com.

For directions to Donnington Priory, please see our website: www.dreweatts.com.

Parking is available at Donnington Priory in two car parks on either side of the saleroom.

INFORMATION FOR BUYERS AT PUBLIC AUCTIONS

1. **INTRODUCTION.** The following notes are intended to assist Bidders and Buyers, particularly those inexperienced or new to our salerooms. All of our auctions and sales are conducted on our printed Auction Terms and Conditions, including these Conditions of Sale and Business, which are readily available for inspection and normally accompany catalogues. Our staff will be happy to help you if there is anything you do not fully understand.

Any particular auction and/or any particular lot in an auction may be subject to different or additional terms which will be published in our auction catalogue. All auctions and sales of wines and spirits, jewellery, watches and clocks are subject to the special terms set out in the relevant Notices in relation to those items published in our auction catalogue and, in the event of any conflict or inconsistency, those special terms prevail over any other terms in our Auction Terms and Conditions. By bidding at the auction, you agree to be bound by these terms.

2. **AGENCY.** As auctioneers we usually act as agents for the seller whose identity, for reasons of confidentiality, is not normally disclosed. Accordingly if you buy at auction your contract for the item or items purchased is with the seller and not with us as the auctioneer.

3. **ESTIMATES.** Estimates are designed to help buyers gauge what sort of sum might be involved for the purchase of a particular lot. Estimates may change and should not be thought of as the sale price. The lower estimate may represent the reserve price and certainly will not be below it. Estimates do not include the Buyer's Premium or VAT (where chargeable). Estimates are prepared some time before the sale and may be altered by announcement before the sale. They are in no sense definitive.

4. **BUYER'S PREMIUM.** The Conditions of Sale forming part of our Auction Terms and Conditions require the buyer to pay a buyer's premium on the hammer price of each lot purchased. The buyer's premium is 26% of the hammer price up to and including £20,000, 25% of the hammer price from £20,001 up to and including £500,000, 20% of the hammer price from £500,001 up to and including £1,000,000, and 12.5% of the hammer price in excess of £1,000,000. VAT at the prevailing rate of 20% is added to buyer's premium and additional charges as defined below.

5. **VAT.** A theta symbol (θ) indicates that the lot is a zero rated item and therefore not subject to VAT on the buyer's premium. This applies to bound books (manuscripts and printed), unframed maps and albums. A dagger symbol (†) indicates that VAT is payable by the purchaser at the standard rate (presently 20%) on the hammer price as well as being an element in the buyer's premium. This imposition of VAT is likely to be because the seller is registered for VAT within the United Kingdom and is not operating the Dealers Margin Scheme. A double dagger (§) indicates that the lot is being sold whilst subject to temporary importation and that import VAT at the reduced rate (currently 5%) calculated on the hammer price is due. (Ω) Indicates that the lot has been imported from outside the UK and that import VAT at the standard rate (currently 20%) calculated on the hammer price (inclusive of any applicable duty) is due. Lots offered subject to temporary importation (‡ or Ω) require relevant customs procedure to be completed prior to the property leaving Dreweatts' premises or being exported. Dreweatts will issue the instruction to a customs broker or shipper upon receipt of full payment for the lots. The import VAT charged for lots with symbols ‡ or Ω can be refunded if Dreweatts is instructed to re-export the property or if the VAT liability is transferred to another Temporary Admission authorisation. Lots which appear without the above symbols indicate that no VAT is payable on the hammer price; this is because such lots are sold using the Auctioneers Margin Scheme and it should be noted that the VAT included within the buyer's premium is not recoverable as input tax.

6. **DESCRIPTION AND CONDITION.** Condition reports are provided on our website or upon request. The absence of a report does not imply that a lot is without imperfections. The detail in a report will reflect the estimated value of the lot. Large numbers of such requests received shortly before the sale may mean that reports cannot be provided for all lots. Members of staff are not trained restorers or conservators and, particularly for higher value lots, you should obtain an opinion from such a professional. Dreweatts is not liable for damage to gilded picture frames, plaster picture frames or picture frame glass; if a Lot is or becomes dangerous, we may dispose of it without notice to bidders in advance in any manner we see fit and will be under no liability for doing so. We recommend that you always view a lot in person.

We are dependent on information provided by the seller about a lot and whilst we may inspect lots and act reasonably in taking a general view about them we are normally unable to carry out a detailed examination and frequently no examination of lots in order to ascertain their condition in the way in which it would be wise for a buyer to do. Intending buyers have ample opportunity for inspection of goods and, therefore, accept responsibility for inspecting and investigating lots in which they may be interested and the corresponding risk should they not do so. Please note carefully the exclusion of liability for the condition of lots contained

in the Conditions of Sale. Neither the seller nor we, as the auctioneers, accept any responsibility for their condition. In particular, mechanical objects of any age are not guaranteed to be in working order. However, in so far as we have examined the goods and make a representation about their condition in the auction catalogue, we shall be liable for any defect which is not reflected in that representation and which that examination ought to have revealed to the auctioneer but which would not have been revealed to the buyer had the buyer examined the goods. Additionally, in specified circumstances lots misdescribed because they are 'deliberate forgeries' may be returned and repayment made. There is a 3 week time limit. (The expression 'deliberate forgery' is defined in our Conditions of Sale).

7. **ELECTRICAL GOODS.** These are sold as 'antiques' only and if bought for use must be checked over for compliance with safety regulations by a qualified electrician before use.

8. **EXPORT OF GOODS.** Buyers intending to export goods should ascertain (a) whether an export licence is required and (b) whether there is any specific prohibition on importing goods of that character because, e.g. they may contain prohibited materials such as ivory. Ask us if you need help.

Private overseas buyers can only receive goods free of VAT or have the VAT amount refunded if Dreweatts acts as exporter in relation to the sale, the goods are exported within 3 months of the sale and Dreweatts is in possession of adequate export documents. The VAT refunds are available for transactions exceeding £2,500. If you arrange for the goods to be picked up/delivered to you directly we will charge UK VAT at the appropriate rate and no refund will be available. Please note, buyers are responsible for completing the importation procedures as well as the payment of any relevant duty/VAT payable on importation into the destination country.

Where the purchase has been made in the business or trading name, VAT refund will be available on proof of export provided within 3 months of the sale.

9. **BIDDING.** Bidders will be required to register before the sale commences and lots will be invoiced to the name and address on the sale registration form. Bidders are required to provide a government issued identity document and a proof of address. Please enquire in advance about our arrangements for telephone bidding.

10. **COMMISSION BIDDING.** Commission bids may be left with the auctioneers indicating the maximum amount to be bid excluding buyer's premium. Dreweatts will add these bids to the auctioneers' sale book and they will be executed as cheaply as possible having regard to the reserve (if any) and competing bids. If two buyers submit identical commission bids the auctioneers may prefer the first bid received. Please enquire in advance about our arrangements for the leaving of commission bids by telephone or fax. Dreweatts does not accept liability for failing to execute commission bids, or for any errors or omissions.

11. **METHODS OF PAYMENT.** Payment will be accepted, if you are a successful bidder, by debit card issued in the name of the Buyer by a UK bank and registered to a UK billing address; by all major UK issued credit cards issued in the name of the Buyer and registered to a UK billing address with the exception of Diners Club; by bank transfer direct into our bank account, Bank Details: NatWest, 30 Market Place, Newbury, Berkshire RG14 5AG. Account Name: Dreweatts 1759 Ltd. A/C: 62412949, Sort Code: 60-15-07, BIC: NWBKGB2L, IBAN: GB21NWBK60150762412949. The name of the bank account holder should match the name of the buyer. First time buyers who are not present at the saleroom are requested to pay by bank transfer.

12. **COLLECTION AND STORAGE.** Please note what the Conditions of Sale state about collection and storage. It is important that goods are paid for and collected promptly. Any delay may involve the buyer in paying storage charges.

13. **λ ARTIST'S RESALE RIGHT (DROIT DE SUITE) ROYALTY CHARGES.** Under Artist's Resale Right (ARR) UK art market professionals (including, but not limited to, auctioneers, art dealers and galleries) are required to collect a royalty for works of art produced by qualifying artists each time a work is resold during the artist's lifetime and for a period up to 70 years following the artist's death. This payment is only applicable to qualifying works of art when the hammer price reaches or exceeds £1,000. The charge is calculated on the portions of the hammer price according to the following rate bands:

Royalty Rate	Portion of the hammer
4%	up to £50,000
3%	between £50,000.01 and £200,000
1%	between £200,000.01 and £350,000
0.5%	between £350,000.01 and £500,000
0.25%	in excess of £500,000

The royalty charge is capped at £12,500 per artwork. All royalty charges are passed on, no handling costs or additional fees with respect to these charges will be retained by Dreweatts. The ARR charge is VAT exempt. All items in this catalogue that are marked with λ are potentially qualifying items. The charge will be added to the buyer's invoice and must be paid before items can be released to the buyer.

TERMS OF CONSIGNMENT FOR SELLERS IN PUBLIC AUCTIONS

The sale of goods at our public auctions and a seller's relationship with us are governed by our Auction Terms and Conditions including these Terms of Consignment for Sellers in Public Auctions and our Conditions of Sale for Public Auctions. Any particular auction and/or any particular lot in an auction may be subject to different or additional terms which will be published in our auction catalogue or separately announced prior to the auction. All auctions and sales of wines and spirits, jewellery, watches and clocks are subject to the special terms set out in the relevant Notices in relation to those items published in our auction catalogue and, in the event of any conflict or inconsistency, those special terms prevail over any other terms in our Auction Terms and Conditions. Please note that our Auction Terms and Conditions including these Terms of Consignment for Sellers in Public Auctions and our Conditions of Sale for Public Auctions relate to auctions held in our salerooms and we have separate terms and conditions for our online auctions.

If you, or another person acting on your behalf, provide goods to us to sell on your behalf at one of our auctions this signifies that you agree to and will comply with our Auction Terms and Conditions including these Terms of Consignment for Sellers in Public Auctions and our Conditions of Sale for Public Auctions.

1. **INTERPRETATION.** In these Terms the words 'you', 'yours', etc. refer to the Seller and if the consignment of goods to us is made by an agent or otherwise on the Seller's behalf we assume that the Seller has authorised the consignment and that the consignor has the Seller's authority to contract. All obligations that apply to the Seller under these Terms of Consignment for Sellers in Public Auctions shall apply to the owner of the goods and their agent jointly and separately. Similarly the words 'we', 'us', etc. refer to the Auctioneers.

2. **WARRANTY.** The Seller warrants that possession in the lots can be transferred to the Buyer with good and marketable title, free from any third party right and encumbrances, claims or potential claims. The Seller has provided all information concerning the item's ownership, condition and provenance, attribution, authenticity, import or export history and of any concerns expressed by third parties concerning the same.

3. **ALL COMMISSIONS**, and fees are subject to VAT at the prevailing rate.

4. **COMMISSION.** is charged to sellers and all selling terms are available from our salerooms.

5. **REMOVAL COSTS.** Items for sale must be consigned to the saleroom by any stated deadline and at your expense. We may be able to assist you with this process but any liability incurred to a carrier for haulage charges is solely your responsibility.

6. LOSS AND DAMAGE OF GOODS

(a) Loss and Damage Warranty - Dreweatts is not authorised by the FCA to provide insurance to its clients, and does not do so. However Dreweatts for its own protection assumes liability for property consigned to it at the lower pre-sale estimate until the hammer falls. To justify accepting liability, Dreweatts makes a charge of 1.5% of the hammer price plus VAT, subject to a minimum charge of £1.50, or if unsold 1.5% of our lower estimate. The liability assumed by Dreweatts shall be limited to the lower pre-sale estimate or the hammer price if the lot is sold. Dreweatts is not liable for damage to gilded picture frames, plaster picture frames or picture frame glass; if the Lot is or becomes dangerous, we may dispose of it without notice to you in advance in any manner we see fit and will be under no liability for doing so.

(b) If the owner of the goods consigned instructs us in writing not to take such action, the goods then remain entirely at the owner's risk unless and until the property in them passes to the Buyer or they are collected by or on behalf of the owner, and clause 6 (a) is inapplicable.

7. **ILLUSTRATIONS AND PHOTOGRAPHS.** The cost of any illustrations or photographs is borne by you. The copyright in respect of such illustrations and photographs shall be the property of us, the auctioneers, as is the text of the catalogue.

8. **MINIMUM BIDS AND OUR DISCRETION.** Goods will normally be offered subject to a reserve agreed between us before the sale in accordance with clause 9. We may sell Lots below the reserve provided we account to you for the same sale proceeds as you would have received had the reserve been the hammer price. If you specifically give us a "discretion" we may accept a bid of up to 10% below the formal reserve.

9. RESERVES

(a) You are entitled to place prior to the auction a reserve on any lot consigned, being the minimum hammer price at which that lot may be sold. Reserves must be reasonable and we may decline to offer goods which in our opinion would be subject to an unreasonably high reserve (in which case goods carry the storage and loss and damage warranty charges stipulated in these Terms of Consignment).

(b) A reserve once set cannot be changed except with our consent.

(c) Where a reserve has been set which we consider unreasonably high, an unsold charge will be payable in the event that the lots fails to sell, being the agreed selling terms calculated on the reserve, LDW at 1.5% and any photographic charges.

(d) Where a reserve has been placed only we may bid on your behalf and only up to the reserve (if any) and you may in no circumstances bid personally.

(e) Reserves are not usually accepted for lots expected to realise below £100.

10. **ELECTRICAL ITEMS.** These are subject to detailed statutory safety controls. Where such items are accepted for sale you accept responsibility for the cost of

testing by external contractors. Goods not certified as safe by an electrician (unless antiques) will not be accepted for sale. They must be removed at your expense on your being notified. We reserve the right to dispose of unsafe goods as refuse, at your expense.

11. **SOFT FURNISHINGS.** The sale of soft furnishings is strictly regulated by statute law in the interests of fire safety. Goods found to infringe safety regulations will not be offered and must be removed at your expense. We reserve the right to dispose of unsafe goods as refuse, at your expense. The rights of disposal referred to in clause 10 and 11 are subject to the provisions of The Torts (Interference with Goods) Act 1977.

12. **DESCRIPTION.** Please assist us with accurate information as to the provenance, lawful import etc. of goods where this is relevant. There is strict liability for the accuracy of descriptions under modern consumer legislation and in some circumstances responsibility lies with sellers if inaccuracies occur. We will assume that you have approved the catalogue description of your lots and that your lots match those descriptions unless informed to the contrary. Where we are obliged to return the price to the buyer when the lot is a deliberate forgery under Condition 15 of the Conditions of Sale and we have accounted to you for the proceeds of sale you agree to reimburse us the sale proceeds and in any event within 7 days of our written notice to do so.

13. **UNSOLD.** If an item is unsold it may at our discretion be re-offered at a future sale. Where in our opinion an item is unsaleable you must collect such items from the saleroom promptly on being so informed. Otherwise, storage charges may be incurred. We reserve the right to charge for storage in these circumstances at a reasonable daily rate.

14. **WITHDRAWN AND BOUGHT IN ITEMS.** These are liable to incur a charge of 15% commission, 1.5 % Loss and Damage Warranty and any other costs incurred including but not limited to illustration and restoration fees all of these charges being subject to VAT on being bought in or withdrawn after being catalogued.

15. **CONDITIONS OF SALE.** You agree that all goods will be sold on our Conditions of Sale for Public Auctions. In particular you undertake that you have the right to sell the goods either as owner or agent for the owner with good and marketable title and free and clear of any third party rights or claims. You undertake to compensate us and any buyer or third party for all losses liabilities, costs and expenses suffered or incurred arising out of or in connection with any breach of this undertaking. We will also, at our discretion, and as far as practicable, confirm that an item consigned for sale does not appear on the Art Loss register, which is administered by an independent third party.

16. **DUE DILIGENCE CHECKS AND ANTI-MONEY LAUNDERING PROCEDURES.** Under the money laundering regulations in force we are required to carry out relevant due diligence checks. This includes verifying the identity of all customers we transact with as well as any beneficial owners on behalf of whom they may transact. Vendors who are unable to or refuse to supply required identification documents and proof of address will not be able to consign to Dreweatts auctions. Copies of customer due diligence checks will be stored for as long as it is necessary to satisfy legal requirements in an appropriate storage facility, which for the avoidance of doubt may include storage solely in electronic form. We reserve the right to withhold the monies owed until the vendor provides the information necessary to complete the anti-money laundering checks.

17. AUTHORITY TO DEDUCT COMMISSION AND EXPENSES AND RETAIN PREMIUM AND INTEREST

(a) You authorise us to deduct commission at the stated rate and all expenses incurred for your account from the hammer price and consent to our right to retain beneficially the premium paid by the buyer in accordance with our Conditions of Sale for Public Auctions and any interest earned on the sale proceeds until the date of settlement.

(b) In case of lots unsold at auction you authorise us at our discretion to reoffer such lots and negotiate a sale within seven days of the auction date, in which case the same charges will be payable as if such lots had been sold at auction and so far as appropriate these Terms apply.

18. **WAREHOUSING.** We disclaim all liability for goods delivered to our saleroom without sufficient sale instructions and reserve the right to make minimum warehousing charge of £10 per lot per day. Unsold lots are subject to the same charges if you do not remove them within a reasonable time of notification. If not removed within three weeks we reserve the right to sell them and defray charges from any net proceeds of sale or at your expense to consign them to the local authority for disposal.

19. **SETTLEMENT.** After sale settlement of the net sum due to you normally takes place within 28 days of the sale unless the buyer has not paid for the goods or the checks necessary under the current Money Laundering Regulations have not been completed. In this case no settlement will then be made but we will take your instructions in the light of our Conditions of Sale for Public Auctions. You authorise any sums owed by you to us on other transactions to be deducted from the sale proceeds. You must note the liability to reimburse the proceeds of sale to us as under the circumstances provided for in Condition 12 above. You should therefore bear this potential liability in mind before parting with the proceeds of sale until the expiry of 28 days from the date of sale.

CONDITIONS OF SALE FOR PUBLIC AUCTIONS

Dreweatts carries on business with bidders, buyers and all those present in the auction room prior to or in connection with a sale by auction at our salerooms on our Auction Terms and Conditions or Public Auctions including these Conditions of Sale for Public Auctions and all bidders, buyers and others participating in a public auction accept that these terms apply to the exclusion of any terms and conditions contained in any of those person's own documents even if the same purport to provide that that person's own or some other terms prevail. Any particular public auction and/or any particular lot in an auction may be subject to different or additional terms which will be published in our online auction catalogue. Please note that our Auction Terms and Conditions including these Conditions of Sale for Public Auctions relate to auctions held in one of our salerooms and we have separate terms and conditions for our online auctions.

1. DEFINITIONS

In these Conditions:

(a) "auctioneer" means the firm of Dreweatts or its authorised auctioneer, as appropriate;

(b) "deliberate forgery" means an imitation made with the intention of deceiving as to authorship, origin, date, age, period, culture or source but which is unequivocally described in the catalogue as being the work of a particular creator and which at the date of the sale had a value materially less than it would have had if it had been in accordance with the description;

(c) "hammer price" means the level of bidding reached (at or above any reserve) when the auctioneer brings down the hammer;

(d) "terms of consignment" means the stipulated terms and rates of commission on which Dreweatts accepts instructions from sellers or their agents;

(e) "total amount due" means the hammer price in respect of the lot sold together with any premium, Value Added Tax chargeable and any additional charges payable by a defaulting buyer under these Conditions;

(f) "sale proceeds" means the net amount due to the seller, being the hammer price of the lot sold less commission at the stated rate, Value Added Tax chargeable and any other amounts due to us by the seller in whatever capacity and however arising;

(g) "You", "Your", etc. refer to the buyer as identified in Condition 2.

(h) The singular includes the plural and vice versa as appropriate.

2. BIDDING PROCEDURES AND THE BUYER

(a) Bidders are required to register their particulars before bidding by completing a sale registration form and to satisfy any security arrangements before entering the auction room to view or bid;

(b) Under the money laundering regulations in force we are required to verify the identity of all customers we transact with as well as any beneficiaries on behalf of whom they may transact. Customers who are unable to or refuse to supply required identification documents and proof of address will not be able to bid in Dreweatts auctions. Copies of customer due diligence checks will be stored for as long as it is necessary to satisfy legal requirements in an appropriate storage facility which for the avoidance of doubt may include storage solely in electronic form;

(c) the maker of the highest bid accepted by the auctioneer conducting the sale shall be the buyer at the hammer price and any dispute about a bid shall be settled at the auctioneer's absolute discretion by reoffering the Lot during the course of the auction or otherwise. The auctioneer shall act reasonably in exercising this discretion.

(d) Bidders shall be deemed to act as principals;

(e) Our right to bid on behalf of the seller is expressly reserved up to the amount of any reserve and the right to refuse any bid is also reserved.

3. **INCREMENTS.** Bidding increments shall be at the auctioneer's sole discretion.

4. **THE PURCHASE PRICE.** The buyer shall pay the purchase price together with a premium thereon of 30% which shall include VAT on the premium at the rate imposed by law. The buyer will also be liable for any royalties payable under Droit de Suite as set out under Information for Buyers.

5. **VALUE ADDED TAX.** Value Added Tax on the hammer price is imposed by law on all items affixed with a dagger (†) or double dagger (‡). Value Added Tax is charged at the appropriate rate prevailing by law at the date of sale and is payable by buyers of relevant Lots. (Please refer to "Information for Buyers" for a brief explanation of the VAT position).

6. PAYMENT

(a) Immediately a Lot is sold you will:

(i) give to us, if requested, proof of identity, and

(ii) pay to us the total amount due or in such other way as is agreed by us.

(b) Any payments by you to us may be applied by us towards any sums owing from you to us on any account whatever without regard to any directions of you or your agent, whether expressed or implied.

(c) In order to comply with money laundering regulations we reserve the right to require proof of source of funds and/ or confirmation of the nature and source of wealth for all receipts of monies from clients directly or from third parties for payments on behalf of clients. Lots will only be released once we have completed necessary checks under the current Money Laundering Regulations.

7. TITLE AND COLLECTION OF PURCHASES

(a) The ownership of any Lots purchased shall not pass to you until you have made payment in full to us of the total amount due.

(b) You shall at your own risk and expense take away any lots that you have purchased and paid for not later than 3 working days following the day of the auction after which you shall be responsible for any removal, storage and insurance charges.

(c) No purchase can be claimed or removed until it has been paid for and we have completed necessary checks under the current Money Laundering Regulations.

8. REMEDIES FOR NON-PAYMENT OR FAILURE TO COLLECT PURCHASES

(a) If any Lot is not paid for in full and taken away in accordance with these Conditions or if there is any other breach of these Conditions, we, as agent for the seller and on our own behalf, shall at our absolute discretion and without prejudice to any other rights we may have, be entitled to exercise one or more of the following rights and remedies:

(i) to proceed against you for damages for breach of contract;

(ii) to rescind the sale of that Lot and/or any other Lots sold by us to you;

(iii) to resell the Lot (by auction or private treaty) in which case you shall be responsible for any resulting deficiency in the total amount due (after crediting any part payment and adding any resale costs). Any surplus so arising shall belong to the seller;

(iv) to remove, store and insure the Lot at your expense and, in the case of storage, either at our premises or elsewhere;

(v) to charge interest at a rate not exceeding 1.5% per month on the total amount due to the extent it remains unpaid for more than 3 working days after the sale;

(vi) to retain that or any other Lot sold to you until you pay the total amount due;

(vii) to reject or ignore bids from you or your agent at future auctions or to impose conditions before any such bids shall be accepted;

(viii) to apply any proceeds of sale of other Lots due or in future becoming due to you towards the settlement of the total amount due and to exercise a lien (that is a right to retain possession of) any of your property in our possession for any purpose until the debt due is satisfied.

(b) We shall, as agent for the seller and on our own behalf pursue these rights and remedies only so far as is reasonable to make appropriate recovery in respect of breach of these conditions.

9. **THIRD PARTY LIABILITY.** All bidders, buyers and other members of the public on our premises are there at their own risk and must note the lay-out of the accommodation and security arrangements. Accordingly neither the auctioneer nor our employees or agents shall incur liability for death or personal injury or for the safety of the property of persons visiting prior to or at a sale (except in each case as may be required by law by reason of our negligence).

10. **COMMISSION BIDS.** Whilst prospective buyers are strongly advised to attend the auction and are always responsible for any decision to bid for a particular Lot and shall be assumed to have carefully inspected and satisfied themselves as to its condition, we will if so instructed clearly and in writing execute bids on their behalf. Neither the auctioneer nor our employees or agents shall be responsible for any failure to do so.

Where two or more commission bids at the same level are recorded we reserve the right in our absolute discretion to prefer the first bid so made.

11. **WARRANTY OF TITLE AND AVAILABILITY.** The seller warrants to the auctioneer and you that the seller is the true owner of the property consigned or is properly authorised by the true owner to consign for sale and is able to transfer good and marketable title to the property free from any third party claims.

Save as expressly set out above, all other warranties, conditions or other terms which might have effect between the Seller and you, or us and you, or be implied or incorporated by statute, common law or otherwise are excluded to the fullest extent permitted by law.

12. **AGENCY.** The auctioneer normally acts as agent only and disclaims any responsibility for default by sellers or buyers.

13. **TERMS OF SALE.** The seller acknowledges that Lots are sold subject to the stipulations of these Conditions in their entirety and on the Terms of Consignment for Public Auctions as notified to the consignor at the time of the entry of the Lot.

14. DESCRIPTIONS AND CONDITION

(a) Whilst we seek to describe lots accurately, it may be impractical for us to carry out exhaustive due diligence on each lot. Prospective buyers are given ample opportunities to view and inspect before any sale and they (and any independent experts on their behalf) must satisfy themselves as to the accuracy of any description applied to a lot. Prospective buyers also bid on the understanding that, inevitably, representations or statements by us as to authorship, genuineness, origin, date, age, provenance, condition or estimated selling price involve matters of opinion. We undertake that any such opinion shall be honestly and reasonably held and accept liability for opinions given negligently or fraudulently. Subject to the foregoing neither we the auctioneer nor our employees or agents nor the seller accept liability for the correctness of such opinions and all conditions and warranties, whether relating to description, condition or quality of lots, express, implied or statutory, are hereby excluded. Dreweatts is not liable for damage to gilded picture frames, plaster picture frames or picture frame glass; if the Lot is or becomes dangerous, we may dispose of it without notice to you in advance in any manner we see fit and will be under no liability for doing so. This Condition is subject to the next following Condition concerning deliberate forgeries and applies save as provided for in paragraph 6 "information to buyers".

(b) Private treaty sales made under these Conditions are deemed to be sales by auction for purposes of consumer legislation.

15. **FORGERIES.** Notwithstanding the preceding Condition, any Lot which proves to be a deliberate forgery (as defined) may be returned to us by you within 21 days of the auction provided it is in the same condition as when bought, and is accompanied by particulars identifying it from the relevant catalogue description and a written statement of defects. If we are satisfied from the evidence presented that the Lot is a deliberate forgery we shall refund the money paid by you for the Lot including any buyer's premium provided that (1) if the catalogue description reflected the accepted view of scholars and experts as at the date of sale or (2) you personally are not able to transfer a good and marketable title to us, you shall have no rights under this condition.

The right of return provided by this Condition is additional to any right or remedy provided by law or by these Conditions of Sale.

16. **PRIVACY NOTICE.** We will hold and process any personal data in relation to you in accordance with our current privacy policy, a copy of which is available on our website www.dreweatts.com/privacy-policy/.

GENERAL

17. We shall have the right at our discretion, to refuse admission to our premises or attendance at our auctions by any person.

18. (a) Any right to compensation for losses liabilities and expenses incurred in respect of and as a result of any breach of these Conditions and any exclusions provided by them shall be available to the seller and/or the auctioneer as appropriate.

(b) Such rights and exclusions shall extend to and be deemed to be for the benefit of employees and agents of the seller and/or the auctioneer who may themselves enforce them.

19. Any notice to any buyer, seller, bidder or viewer may be given by first class mail, email or Swiftmail in which case it shall be deemed to have been received by the addressee 48 hours after posting.

20. Special terms may be used in catalogue descriptions of particular classes of items in which case the descriptions must be interpreted in accordance with any glossary appearing at the commencement of the catalogue.

21. Any indulgence extended to bidders, buyers or sellers by us notwithstanding the strict terms of these Conditions or of the Terms of Consignment shall affect the position at the relevant time only and in respect of that particular concession only; in all other respects these Conditions shall be construed as having full force and effect.

22. These Conditions shall be governed by and construed in accordance with English law and the parties irrevocably submit to the exclusive jurisdiction of the English courts.

DREWEATTS

NEWBURY

Dreweatts

Donnington Priory

Newbury

Berkshire RG14 2JE

+44 (0) 1635 553 553

info@dreweatts.com

MANAGING DIRECTOR

Vicki Wonfor

CHAIRMAN

Will Richards

DEPUTY CHAIRMAN

James Nicholson

LONDON

Dreweatts / Bloomsbury Auctions

16-17 Pall Mall

St James's

London SW1Y 5LU

+44 (0) 20 7839 8880

info@bloomsburyauctions.com

info@dreweatts.com

HAMBRIDGE LANE

Dreweatts

1 Hambridge Lane

Newbury

Berkshire RG14 5TU

+44 (0) 1635 553 553

info@dreweatts.com

GROUP DEPARTMENTS

AUTOGRAPHS AND EPHEMERA

Ania Hanrahan

ahanrahan@dreweatts.com

ASIAN CERAMICS AND WORKS OF ART

Mark Newstead

Dr Yingwen Tao

Lavinia Jin

asian@dreweatts.com

BLOOMSBURY AUCTIONS BOOKS AND MANUSCRIPTS

Rupert Powell

Dido Arthur

Justin Phillips

Max Hasler

Richard Caroll

info@bloomsburyauctions.com

BRITISH AND EUROPEAN CERAMICS AND GLASS

Mark Newstead

Geoffrey Stafford Charles

interiors@dreweatts.com

BRITISH AND EUROPEAN SCULPTURE AND WORKS OF ART

Silas Currie Leigh-Wood

sculpture@dreweatts.com

CLOCKS AND SCIENTIFIC INSTRUMENTS

Leighton Gillibrand

clocks@dreweatts.com

COUNTRY SPORTING

Geoffrey Stafford Charles

gscharles@dreweatts.com

FURNITURE AND CARPETS

Ben Brown

Elaine Binning

Ashley Matthews

William Turkington

Mitchell Tompkins

furniture@dreweatts.com

HOUSE SALES AND PRIVATE COLLECTIONS

Joe Robinson

Peter Horwood

Eloise Kerr-Smiley

Arabella Methuen

housesales@dreweatts.com

JEWELLERY, SILVER, WATCHES AND OBJECTS OF VERTU

James Nicholson

Charlotte Peel

Nick Mann

Tessa Parry

jsw@dreweatts.com

LIVE STEAM AND MODEL ENGINEERING

WORKS OF ART

Lucie Hobbs

transport@dreweatts.com

MODERN AND CONTEMPORARY ART

Jennie Fisher

Francesca Walsh

Will Porter (Business Development)

Anastasia Fedoseeva

pictures@dreweatts.com

MODERN DESIGN AND DECORATIVE ART

Gemma Sanders

Geoffrey Stafford Charles

Ashley Matthews

Luke McGurk

design@dreweatts.com

OLD MASTER, BRITISH AND EUROPEAN ART

Brandon Lindberg

Lucy Darlington

Daniele Amesso

Isabelle Rietkerk

pictures@dreweatts.com

WINE

Mark Robertson

Violette Jongbloed

wine@dreweatts.com

CONSIGNMENT MANAGEMENT

Lucie Hobbs

Christy Chambers

consignments@dreweatts.com

VALUATIONS FOR PROBATE, INSURANCE AND CGT

Emma Terry

Janice Cliff

valuations@dreweatts.com



DREWEATTS

EST. 1759