

FINE JEWELLERY

THURSDAY 12 JUNE 2025 | NEWBURY



DREWEATTS

EST. 1759



FINE JEWELLERY

THURSDAY 12 JUNE 2025 | NEWBURY

LOTS 1-226 | 10.30AM

VIEWING IN LONDON

Tuesday 3 June: 10am–4pm

Wednesday 4 June: 10am–4pm

VIEWING IN NEWBURY

Sunday 8 June: 10am–3pm

Monday 9 June: 10am–4pm

Tuesday 10 June: 10am–4pm

Wednesday 11 June: 10am–4pm

SPECIALISTS

Charlotte Peel GG

Tessa Parry FGA, DGA

ENQUIRIES & CONDITION REPORTS

jsw@dreweatts.com

NEWBURY

Donnington Priory, RG14 2JE

+44 (0) 1635 553 553

LONDON

16-17 Pall Mall, SW1Y 5LU

+44 (0) 20 7839 8880

info@dreweatts.com

dreweatts.com

DREWEATTS

EST. 1759



A GUIDE FOR BUYERS

REGISTRATION AND BIDDING

We advise bidders to register at least 48 hours in advance of the auction as we will need to complete Know Your Client checks on all registrants in order to comply with sanctions regimes. Clients are advised to register with a correct account as re-billing will not be possible. We allow commission (or absentee bids), telephone bids, live online bidding, and in person bidding. More information is available in our Terms of Sale at the back of this catalogue, and on our website.

BUYER’S PREMIUM

26% of hammer price up to £20,000
(31.2% including VAT), plus

25% of hammer price from £20,001 up to £500,000
(30% including VAT), plus

20% of hammer price from £500,001 up to £1,000,000
(24% including VAT), plus

12.5% of hammer price in excess of £1,000,000
(15% including VAT)

ADDITIONAL CHARGES AND SYMBOLS

λ - Indicates that this lot may be subject to Artist’s Resale Right (Droit de Suite) royalty charges.

Y - Indicates that this lot may be subject to CITES regulations when exported.

† - Indicates that VAT is payable by the purchaser at the standard rate of 20% on the hammer price as well as being charged on the buyer’s premium.

θ - Indicates that the lot is a zero rated item and therefore subject to buyer’s premium of 26% exclusive of VAT (0% VAT).

‡ - Indicates that the lot is being sold whilst subject to temporary importation and that import VAT at the reduced rate (currently 5%) calculated on the hammer price is due.

Ω - Indicates that the lot has been imported from outside the UK and that import VAT at the standard rate (currently 20%) calculated on the hammer price (inclusive of any applicable duty) is due.

β - Indicates that the lot is offered in Bond. This applies to wine. Bidding will be at duty paid prices other than for those lots marked ‘IN BOND/β’.

Note, the import VAT charged for lots with symbols ‡ or Ω can be refunded if Dreweatts is instructed to re-export the property or if the VAT liability is transferred to another Temporary Admission authorisation.

PAYMENT

If you are successful, an invoice will be sent to the email address registered on your bidder account. The invoice will include detailed payment and collection information. If you wish to see this in advance, please visit our website. Items must be paid for in full and Know Your Client checks must

be completed before we can release any purchases. Third party payments are not accepted. First time buyers may also be subject to restrictions on the methods of payment we can accept. Please confirm this with the saleroom prior to collection.

COLLECTIONS, SHIPPING AND STORAGE

Unless otherwise stated below, purchases are available for collection from Dreweatts Donnington Priory salerooms from Monday to Friday (9am-5pm) by appointment only. If you wish to have the item shipped to you, please see the list of suggested shippers on our website.

Due to a busy schedule of sales, we are unable to store sold items at the salerooms; any items not collected after 4 working days of the sale (by 4pm) are removed to commercial storage and subject to a storage charge of £20 (plus VAT) per lot as well as a further storage charge of £3 (plus VAT) per lot per day thereafter. Please note for large consignments there may be additional charges. These charges will be the sole liability of the purchaser and will be billed directly to them by Sackville-West Moving & Storing. On payment of all sales and storage costs, items will be available for collection by appointment from Sackville-West Moving & Storing (Andover SP10 3SA).

CONDITIONS OF SALE

Any registration to bid is subject to acceptance of our Auction Terms and Conditions and Privacy Policy. Both are available on our website.

CONDITION OF ITEMS

Buyers must satisfy themselves to the condition of any item prior to bidding. Detailed condition reports and additional images are available upon request.

EXPORT OF ITEMS

Prospective bidders are advised to familiarise themselves with any export and import restrictions or prohibitions applicable to the lots they wish to purchase. For example, the lots may contain prohibited material such as endangered species (and therefore be subject to CITES regulations) or be subject to shipping or trade restrictions. Cultural objects of certain age and value may require a UK export licence. It is buyer’s responsibility to obtain any relevant export and/or import licences and permits, as well as pay any customs duties, taxes and other fees applicable on import into the destination country. Dreweatts will not cancel the sale if a lot may not be exported, imported or it is seized for any reason by a government authority.

GLOSSARY OF TERMS

Where relevant, for example Picture auctions or Clocks auctions, a glossary of cataloguing terms will be available in the printed catalogues as well as on our website.



1

1
A FRENCH EARLY 19TH CENTURY AMETHYST NECKLACE, BROOCH AND EARRING SET
 PARIS, 1819

The necklace composed of a graduated series of oval cut amethysts in coronet mounts, together with a matching three stone brooch and single stone earrings, with a pair of detachable pear shaped amethyst drops, earrings with hook fittings, French poinçons on each
 Size/dimensions: necklace 46.0cm, earrings with drops 3.6cm long, brooch 5.1cm wide
 Gross weight: 88.2 grams

£3,000-5,000



2

2
A PAIR OF GEORGIAN GARNET BRACELETS
 CIRCA 1830 AND LATER

Each composed of a line of cushion shaped garnets in foiled closed back settings, converted
 Size/dimensions: 18.5 and 19.0cm long
 Gross weight: 16.9 grams

£600-800



3

3
A VICTORIAN TURQUOISE MANDOLIN PENDANT
 CIRCA 1840

Designed as a two colour gold mandolin with floral and foliate motifs and cabochon turquoise border, opening to reveal a glazed locket, suspended from twin cable link chains and a loop suspension ring, unmarked, fitted case by Wartski
 Size/dimensions: 4.4cm long
 Gross weight: 10.2 grams

£700-1,000



4

4
A GEORGIAN DIAMOND RING
 CIRCA 1820

The old cut diamond in a foiled closed back setting with reeded verso, between trifurcated foliate shoulders to a reeded shank, mounted in silver and gold, diamond approximately 3.0-3.4 carats, unmarked
 Size/dimensions: ring size G
 Gross weight: 2.7 grams

£5,000-7,000



5



6

5

A MID 19TH CENTURY BANDED AGATE PENDANT AND EARRINGS

CIRCA 1860

Each oval cabochon banded agate within a shaped setting with bead detail, the pendant with glazed verso and black enamel bale, earrings with bead surmounts and hook fittings, unmarked

Size/dimensions: pendant 5.2cm, earrings 3.7cm long

Gross weight: 33.6 grams

£800-1,200

6

A LATE 19TH CENTURY RUBY AND DIAMOND FIVE STONE RING

Composed of alternating graduated old European cut diamonds and cushion shaped rubies with rose cut diamond points, to a scrolled gallery, stamped 18

Size/dimensions: ring size O

Gross weight: 4.5 grams

£1,500-2,000

7

A VICTORIAN RUBY AND DIAMOND BANGLE, A GIFT FROM QUEEN VICTORIA

CIRCA 1881

The bangle with a row of graduated cushion cut rubies alternating with old cut diamonds, to polished reeded shoulders, engraved with *From Victoria R & I 1881*, in original purple velvet case

Size/dimensions: inner width 5.7cm

Gross weight: 37.7 grams

Provenance:

From a relative of the Blagden family.

Offered for sale with a paperback copy of *Memories of Isabella and Henry Blagden* by their daughter T. H.-H., published in 1934, which details the story behind the gift of the bangle from Queen Victoria. The bangle was presented to Mrs Blagden as a token of gratitude for crafting an embroidered pouch designed to hold photographs. The pouch closely resembled a book cover she had earlier created and gifted to Benjamin Disraeli, an item that had greatly impressed the Queen.

£4,000-6,000



8

8

BENJAMIN DISRAELI, A MEMORIAL BROOCH

The circular brooch with a glazed panel above a coil of hair around a gold B, with an engraved gold Earl's coronet above, pearlescent glass verso, within a gold setting, unmarked

Size/dimensions: 2.4cm diameter

Gross weight: 5.0 grams

Provenance:

From a relative of the Blagden family.

Benjamin Disraeli, Earl of Beaconsfield (1804-1881) was know as Queen Victoria's favourite Prime Minister, and was a prominent figure in Victorian political and public life. He was Prime minister of Great Britain in 1868, and Queen Victoria wrote to her daughter Prussian Crown Princess Victoria '*Mr. Disraeli is Prime Minister! A proud thing for a man 'risen from the people' to have obtained!*'. He was again made Prime minister for a term of 1874-1880, and in 1876 he was made Earl of Beaconsfield.



7



7 (detail)

Reverend Canon Henry Blagden (1832-1922) was appointed by Disraeli to the church at Hughenden, where Disraeli had his country home. Disraeli and his wife Mary Anne had a close relationship and friendship with Henry Blagden and his wife Isabella through the works of the church as well as through life on the Hughenden estate, where the reverend stayed for 25 years. The Blagden's remained at the Hughenden Estate after Disraeli's death, where his loss was much felt and lamented. Due to royal protocol, Queen Victoria wasn't able to attend his funeral at Hughenden, but a few days after she made a surprise visit from Windsor to his grave, where the Blagden's had to rush from their usual parish rounds in order to greet her. A year later they had a personal meeting with the Queen, and in 1887 due to Isabella's friendship with Lord Beaconsfield, or Dizzy as the family sometimes referred to him as, she was permitted to present the Queen with a gift for her jubilee, and within 10 weeks she had embroidered a fine chair for Queen Victoria.

£250-350

TIFFANY & CO LOTS 9-13



9

9
TIFFANY & CO., A DIAMOND SET 'VOILE' PENDANT
The octagonal plaque of openwork lattice design with brilliant cut diamond centre and two row frame, to a diamond set openwork surmount and trace link chain interspersed with diamond set links, signed Tiffany & Co., stamped PT950, maker's case and card outer
Size/dimensions: pendant 6.0cm, chain 45.0cm long
Gross weight: 13.5 grams

£2,000-3,000



10



11



12

12
TIFFANY & CO., A PAIR OF 18CT ROSE GOLD 'ATLAS' EARRINGS
Each openwork hoop with Roman numeral motifs, post fittings, signed T&Co., maker's mark, UK hallmark, maker's case and card box
Size/dimensions: 1.4cm long
Gross weight: 4.9 grams

£400-600



13

10
TIFFANY & CO., A RUBY AND DIAMOND HALF HOOP RING
Channel set to the front with alternating square cut rubies and diamonds, signed Tiffany & Co., stamped 18k, maker's box
Size/dimensions: ring size K
Gross weight: 2.7 grams

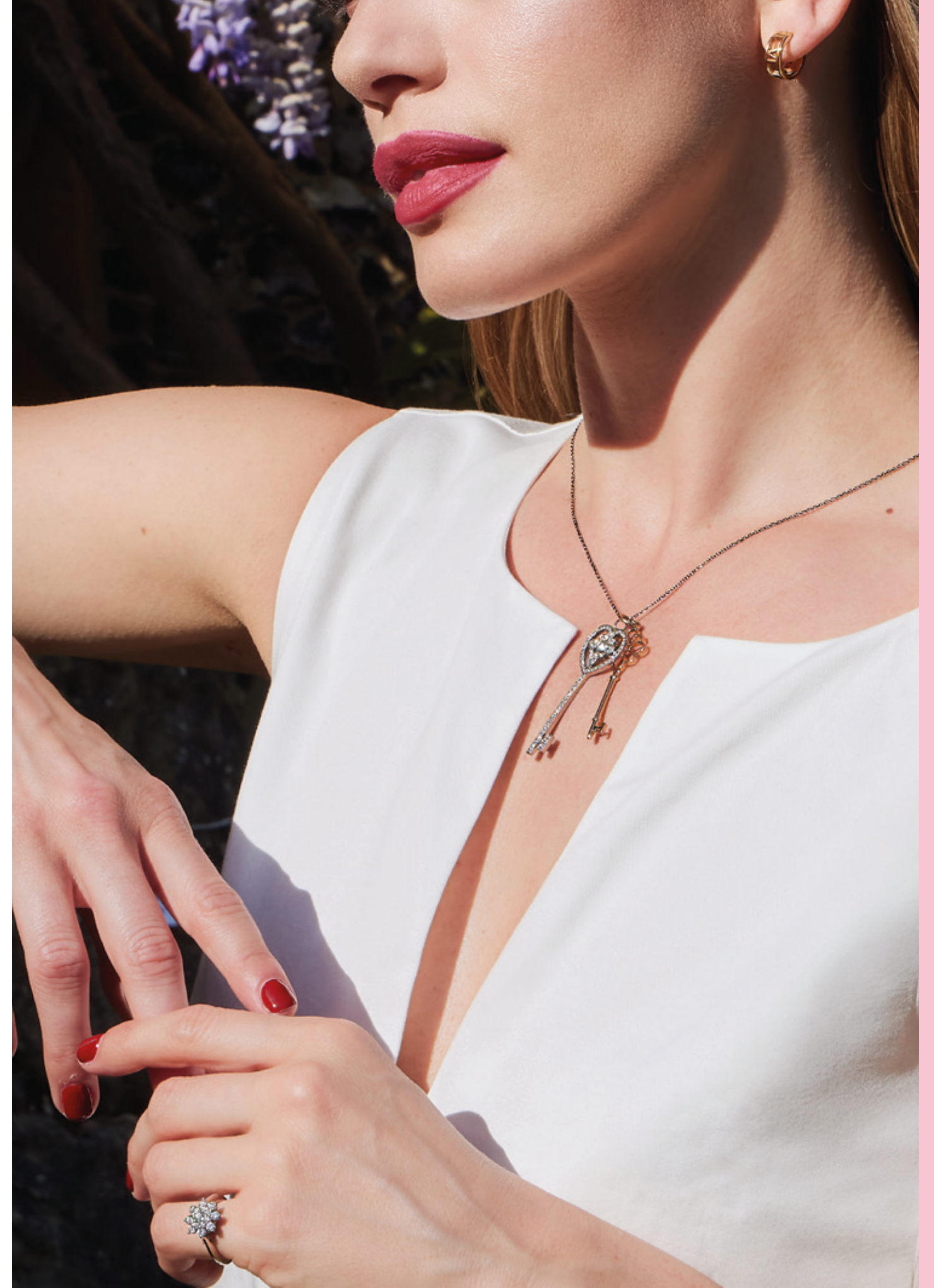
£400-600

11
TIFFANY & CO., A DIAMOND 'BLOSSOM' RING
Designed as a flowerhead cluster of brilliant cut diamonds, to a polished band, signed Tiffany & Co., stamped Pt950, maker's case
Size/dimensions: ring size H
Gross weight: 4.4 grams

£600-800

13
TIFFANY & CO., A DIAMOND 'HEART KEY' PENDANT LONDON 2011
The key set throughout with brilliant cut diamonds, with a trio of pear shaped diamonds to the heart shaped bow, mounted in platinum, with loop bale; together with a polished 18ct gold 'Knot' key, with loop bale; suspended from a belcher link chain, each signed Tiffany & Co., first key with UK hallmark, second stamped Au750 Italy, chain stamped AG925, in an associated Tiffany & Co. pouch
Size/dimensions: first 4.9cm long; second 4.5cm long; chain 26.5cm long
Gross weight: 10.3 grams

£1,500-2,000





14

14
POMELLATO, A DIAMOND SET ‘BRERA’ RING
Of graduated chain link design, the front accented with brilliant cut diamonds, signed Pomellato, numbered C190013550, stamped 750 and with Italian control marks, in maker’s box
Size/dimensions: ring size L
Gross weight: 7.4 grams

£600-800



15

15
BOODLES, A DIAMOND SET ‘BLOSSOM’ LONG CHAIN
The cable link chain set with polished or brilliant cut diamond set flower heads, suspending a similarly designed pendant, mounted in 18 carat white gold, diamonds approximately 0.85 carats total, signed Boodles, numbered 0735N0174, SXXX .87, maker’s mark, London hallmark, maker’s case and card box
Size/dimensions: 108.0cm long
Gross weight: 36.3 grams

£4,000-6,000



16

16
A MORGANITE AND DIAMOND PENDANT
Composed of three pear shaped morganites each in brilliant cut diamond surrounds, suspended from an 18ct rose gold trace link chain, UK hallmark
Size/dimensions: 4.5cm long
Gross weight: 5.0 grams

£700-1,000



17

17
A DIAMOND RIVIERE NECKLACE
Composed of a graduated line of brilliant cut diamonds in four claw mounts, diamonds approximately 25-26.0 carats total, stamped 18K
Size/dimensions: 39.0cm long
Gross weight: 31.1 grams

£8,000-12,000



18
A DIAMOND SINGLE STONE RING
 The old cushion shaped diamond, weighing 5.07 carats, in a six claw mount, stamped 18ct Plat
 Size/dimensions: ring size P
 Gross weight: 4.4 grams

£15,000-20,000

19
AN ART DECO DIAMOND COCKTAIL WATCH
 CIRCA 1930
 The rectangular white dial with Arabic numerals and blued steel hands, within a single cut diamond bezel, between baguette and single cut diamond openwork lugs and mesh link cordette straps, unmarked, manual wind movement
 Size/dimensions: 17.5cm long
 Gross weight: 28.0 grams

£700-1,000

20
AN ART DECO DIAMOND BRACELET
 CIRCA 1925
 Composed of alternating geometric links set throughout with old European cut diamonds with diamond single stone spacers between, diamonds approximately 8.50-9.0 carats total
 Size/dimensions: 18.7cm long
 Gross weight: 21.9 grams

£7,000-10,000





21
A CULTURED PEARL, DIAMOND AND COLOURED DIAMOND NECKLACE
 Composed of a single strand of 13.8-15.0mm cultured pearls of various tint, to a bead clasp pavé set with vari cut diamonds interspersed with diamonds of yellow, pink and blue tints, stamped 750 with Italian control marks
 Size/dimensions: 48.5cm long
 Gross weight: 137.5 grams

Coloured diamonds untested and unwarranted as natural colour

Provenance:
 Private Collection

£4,000-6,000

21



22

22
A PAIR OF PERIDOT AND DIAMOND EARRINGS
 Each rectangular step cut peridot within an openwork cartouche and line surmount set with brilliant cut diamonds, post fittings, unmarked
 Size/dimensions: 4.1cm long
 Gross weight: 10.9 grams

£1,800-2,500



23

23
AN EMERALD AND DIAMOND CIRCLET BROOCH
 Composed of alternating brilliant cut diamond and circular cut emerald clusters, unmarked
 Size/dimensions: 3.4cm wide
 Gross weight: 11.0 grams

£700-1,000



24

24
AN EMERALD, DIAMOND AND ENAMEL PENDANT
 The oval cut emerald surmount within a black enamel and brilliant cut diamond surround, suspending a shaped drop set with five graduated oval cut emeralds in a similarly set surround, to a fancy link chain, stamped Pt950
 Size/dimensions: pendant 4.5cm long
 Gross weight: 9.8 grams

£1,600-2,000



25

25
AN EARLY 20TH CENTURY
DIAMOND FLOWER BROOCH
CIRCA 1900

Designed as a stem of buds and pierced leaves, centrally set ‘en tremblant’ with a flowerhead, set throughout with old European and single cut diamonds, mounted in silver and gold
Size/dimensions: 5.2cm long
Gross weight: 19.9 grams

£1,500-2,000

26
AN EARLY 20TH CENTURY NATURAL
PEARL AND DIAMOND NECKLACE

Composed of a graduated row of 3.30-5.80mm pearls, to a millegrain set old European and rose cut diamond openwork clasp, unmarked
Size/dimensions: 47.0cm long
Gross weight: 10.6 grams

Offered for sale with a Gemmological Certification Services (GCS) report, no.5784-3730, dated 23rd September 2024, stating: Variety: Natural Nacreous Pearl Environment: Saltwater

£700-1,000



26

27
A NATURAL PEARL
NECKLACE
The graduated pearls on a knotted strand measuring between 2.1 and 6.2mm diameter, to a later simulated pearl clasp
Size/dimensions: 38cm long
Gross weight: 9.9 grams

Offered for sale with a Gemmological Certification Services (GCS) report, no.5785-2321, dated 8th May 2025, stating: Variety: Natural Nacreous Pearl Environment: Saltwater Comment: contains 2 beaded cultured pearls including clasp

£800-1,200



27



28

28
A LATE 19TH CENTURY DIAMOND BROOCH
CIRCA 1890
Designed as a viola flowerhead in a heart shaped frame, set throughout with old European cut diamonds, mounted in silver and gold
Size/dimensions: 3.5cm long
Gross weight: 10.2 grams

£1,500-2,000



29

29
A LATE 19TH CENTURY GEM SET SPRAY BROOCH
Set with circular cut sapphire or pearl buds and old cut diamond leaves and stem, and a diamond and ruby butterfly, mounted in silver and gold, later pin fitting, unmarked
Size/dimensions: 5.4cm long
Gross weight: 8.3 grams

£600-800



30

30
A VICTORIAN SAPPHIRE AND DIAMOND CRESCENT BROOCH
CIRCA 1890
Set with a raised graduated row of oval and circular cut sapphires in gold pinched collet settings, within an old European cut diamond surround, mounted in silver and gold, connected to a diamond single stone stick pin
Size/dimensions: 4.0cm long
Gross weight: 15.9 grams

£3,000-5,000



31

31
A LATE 19TH CENTURY DIAMOND STAR BROOCH/PENDANT
CIRCA 1890
Designed as a six rayed star with knifewire diamond single stones between, set throughout with old European and rose cut diamonds, mounted in silver and gold, diamonds approximately 3.50 carats total, detachable brooch fitting, unmarked
Size/dimensions: 4.0cm long
Gross weight: 12.7 grams

£1,500-2,000



32

32
A LATE 19TH CENTURY NATURAL PEARL STICKPIN
CIRCA 1880 AND LATER
The 10.6 x 8.7 x 6.8mm drop shaped pearl to an old mine and rose cut diamond set foliate surmount set in silver and gold, later mounted on a stickpin
Size/dimensions: terminal 2.0cm long
Gross weight: 3.1 grams

Offered for sale with a Gemmological Certification Services (GCS) report, no. 5785-2157, dated 25th April 2025, stating:
Variety: Natural Nacreous Pearl
Environment: Saltwater
Comment: No indications of treatment

£800-1,200



34



33

33
A NATURAL PEARL NECKLACE
The uniform long strand of 4.0-4.7mm natural pearls, to a converted 19th century heart shaped clasp, set with a rock crystal heart, applied with an old European cut diamond flower in a diamond surround and surmount, mounted in silver and gold, unmarked
Size/dimensions: 87.0cm long
Gross weight: 24.0 grams

Offered for sale with a Gemmological Certification Services (GCS) report, no. 5785-1648, dated 21st March 2025, stating:
Variety: Natural Nacreous Pearl
Environment: Saltwater
Comment: No indications of treatment

£1,200-1,800

34
A LATE 19TH CENTURY GEM SET NOVELTY BROOCH
CIRCA 1890
Modelled as a pheasant, with a mabé pearl body, rose cut diamond head and tail and cabochon ruby eye and enamelled beak and feet, mounted in silver and gold, unmarked
Size/dimensions: 4.1cm long
Gross weight: 6.3 grams

£400-600



36

35

A SAPPHIRE AND DIAMOND LONGCHAIN

Spectacle set with pear shaped facettted sapphires between barrel shaped links alternately inset with brilliant cut diamonds, unmarked

Size/dimensions: 159.0cm long

Gross weight: 77.4 grams

£2,000-3,000



38



37

36

A LABRADORITE SINGLE STONE RING

The circular cabochon labradorite in a brushed rubover mount, stamped 900, maker's mark

Size/dimensions: ring size N

Gross weight: 17.4 grams

£500-700

37

A SAPPHIRE CURB LINK BRACELET

The collet set oval cut sapphires between flattened curb link connectors, unmarked

Size/dimensions: 20.0cm

Gross weight: 39.3 grams

£2,000-3,000

38

A SAPPHIRE AND DIAMOND RING

LONDON, 2000

The cushion shaped sapphire collet set between triangular cut diamond shoulders, mounted on a wide 18ct gold band, maker's mark SRD, UK hallmark

Size/dimensions: ring size O

Gross weight: 18.1 grams

£1,000-1,500



39

39

THEO FENNELL, AN 18CT GOLD CABLE LINK NECKLACE AND BRACELET

LONDON, 1993 AND 1998

The cable link necklace to a T-bar and ring clasp with cabochon sapphire finials, the bracelet to a bead clasp with engraved date 1-6-97, maker's mark TF, UK hallmarks

Size/dimensions: necklace 44.0cm, bracelet 19.0cm long

Gross weight: 220.5 grams

£6,000-8,000



40

40

A RUBY AND DIAMOND TWO STONE RING

Designed as two joined tapered bands, set with an oval cut sapphire or cushion shaped ruby in a rubover mount, unmarked

Size/dimensions: ring size G

Gross weight: 23.4 grams

£2,000-3,000



41 Y
AN ITALIAN CORAL FANCY LINK LONG CHAIN
1980S
Composed of reeded coral batons with mask terminals, between fancy link connectors, Italian control mark, stamped 18K
Size/dimensions: 85.0cm long
Gross weight: 109.8 grams

Please note this lot will be subject to US Fish and Wildlife regulations if imported into the USA.

£4,500-5,500

42
MARCHISIO, A LAPIS LAZULI LONGCHAIN
Composed of rectangular lapis lazuli batons, alternating with fancy openwork link sections, Italian control mark, stamped 750
Size/dimensions: 80.0cm long
Gross weight: 76.5 grams

The Marchisio family's journey in jewellery began in 1649 in Turin. In 1846, Felice Marchisio advanced the craft, training in Paris before founding a successful workshop with his brother. By the 1880s, it became Turin's largest goldsmith company. Despite hardships during World Wars I and II, the business was revived by Felice's descendants, evolving into Giovanni Marchisio & Co in 1968. Since the 1990s, it has been led by the Mattioli family and, in 2013, was acquired by the Richemont Group, continuing as a key supplier to major luxury brands like Cartier and Van Cleef & Arpels.

£1,800-2,200

43
A PAIR OF NATURAL PEARL AND DIAMOND EARRINGS
CIRCA 1970
Each of openwork geometric design, the central natural button-shaped pearl within a textured baton surround accented with old European cut diamonds, clip fittings, unmarked
Size/dimensions: 2.0cm long
Gross weight: 18.1 grams

Offered for sale with a Gem & Pearl Laboratory report, no.24534, dated 30th April 2024, stating:
Variety: Natural Nacreous Pearl
Environment: Saltwater

£800-1,200

44
TRIO, A LAPIS LAZULI, TURQUOISE AND DIAMOND DRESS RING
The oval cabochon lapis lazuli within a domed surround collet set with circular cabochon turquoise and brilliant cut diamonds, signed Trio, stamped 18K
Size/dimensions: ring size L
Gross weight: 13.4 grams

£800-1,200



43



44

41

42



45



46

45
AN AMETHYST, CULTURED PEARL AND DIAMOND DRESS RING AND EARRINGS
LONDON 1961
The ring set with a cushion shaped amethyst in a cultured pearl and brilliant cut diamond surround with ropetwist detail, to a wirework band; the earrings of similar design of star shaped outline, earrings with clip fittings and UK hallmark for 18ct gold, maker's mark MG, ring apparently unmarked
Size/dimensions: ring size Q, earrings 2.2cm long
Gross weight: 32.9 grams

£1,000-1,500

46
GILBERT ALBERT, AN 18CT GOLD BANGLE AND BROOCH
CIRCA 1972
Of bi-coloured gold twisted, abstract openwork design, each signed Gilbert Albert, maker's mark, bangle numbered 2814, brooch 2598, stamped 750, UK import mark
Size/dimensions: bangle inner diameter 5.6cm, brooch 5.1cm wide
Gross weight: 77.6 grams

£3,000-5,000



47



49



48



50

47
DAVID THOMAS, AN OPAL SNAKE BROOCH
LONDON, 1971
The freeform opal encircled by an 18ct gold snake, maker's mark, London hallmark
Size/dimensions: 5.0cm long
Gross weight: 20.6 grams

£2,500-3,500

48
TOM SCOTT, A CITRINE AND DIAMOND DRESS RING
LONDON 1973
The trio of marquise cut citrine with brilliant cut diamond accents on a pierced foliate style 18ct gold panel, maker's mark TES, UK hallmark
Size/dimensions: ring size L 1/2
Gross weight: 8.2 grams

Tom Scott, born 1942, graduated from Hornsea College of Art in 1968. He originally trained as a silversmith, but transitioned into jewellery making, producing pieces for Andrew Grima, as well as pieces under his own mark.

£300-500

49
A DIAMOND SET BROOCH
LONDON 1965
Of abstract bark textured 18ct gold design, accented with old European cut diamonds, UK hallmark, maker's mark HBLtd
Size/dimensions: 6.4cm long
Gross weight: 15.1 grams

£700-1,000

50
RETAILED BY GARRARD, A PAIR OF FRENCH DIAMOND SET EARRINGS
Each designed as an 18ct gold wheat sheaf with single cut diamond accents, clip fittings, signed Garrard, UK import mark, French poinçon
Size/dimensions: 2.6cm long
Gross weight: 11.5 grams

£300-500



51

51
A PAIR OF GEM SET PENDENT EARRINGS
 Each pear shaped citrine drop suspended from a pear shaped amethyst and a marquise shaped peridot and brilliant cut diamond three stone connector in brushed collet settings, post fittings, unmarked
 Size/dimensions: 5.7cm long
 Gross weight: 12.6 grams

£600-800



52

52
A CITRINE AND DIAMOND DRESS RING
 The oval cabochon citrine with brilliant cut diamond set claws and shoulders, mounted in 18ct gold, maker's mark JLM, UK hallmark
 Size/dimensions: ring size O
 Gross weight: 8.7 grams

£500-700



53

53
A PAIR OF EMERALD AND DIAMOND EARRINGS
 Each rectangular step cut emerald and brilliant cut diamond cluster, suspended from a smaller similarly set surmount and collet set diamond connector, post fittings, stamped 14K
 Size/dimensions: 2.9cm long
 Gross weight: 8.0 grams

£2,000-3,000



55

55
A PAIR OF DIAMOND AND GEM SET PENDENT EARRINGS
 Each brilliant cut diamond set hoop suspending four detachable drops spectacle set with vari cut amethyst, citrine, peridot or aquamarine, post fittings, unmarked
 Size/dimensions: 3.1cm long
 Gross weight: 9.5 grams

£800-1,200



54

54
A MOONSTONE NECKLACE AND BRACELET
 Spectacle set with alternating double sided cabochon vari-coloured moonstones, the necklace with chain link sections between, stamped 750
 Size/dimensions: necklace 59.5cm, bracelet 18.0cm long
 Gross weight: 26.1 grams

£800-1,200



56
A LATE 19TH CENTURY DIAMOND RING
1893-1906
Set with a pear shaped rose cut diamond in a heart shaped pinched collet mount beneath a rose cut diamond coronet, between diamond set openwork shoulders with acanthus leaf detail and reeded verso, mounted in silver and gold, Dutch control mark
Size/dimensions: ring size J
Gross weight: 2.7 grams

£1,000-1,500

57
A NATURAL PEARL AND DIAMOND TWO ROW NECKLACE
Composed of two graduated strands of 4.0 - 9.5mm pearls, including three cultured pearls, with seed pearl spacers, to an old cut diamond cluster clasp, mounted in silver and gold, clasp converted
Size/dimensions: 46.5 cm long
Gross weight: 46.5 grams

Offered for sale with a Gemmological Certification Services (GCS) report, no. 5785-1646, dated 21st March 2025, stating:
Variety: Natural Nacreous Pearl
Environment: Saltwater
Comment: No indications of treatment.
Contains 3 beaded cultured pearls

£8,000-12,000

58
AN EARLY 19TH CENTURY DIAMOND CLUSTER RING
CIRCA 1830S
The old European cut diamond in an old mine cut diamond surround, between fleur-de-lys shoulders with diamond accents, mounted in silver and gold
Size/dimensions: ring size N
Gross weight: 3.0 grams

£800-1,200





59

59
AN ART DECO CORNELIAN AND DIAMOND PANEL
CIRCA 1925 AND LATER
The floral carved oval cornelian plaque within an old cut diamond geometric frame, later mounted on a solid panel with brooch fitting, composite
Size/dimensions: 4.5cm wide
Gross weight: 21.1 grams

£300-500



60

60
A MID 20TH CENTURY DIAMOND PANEL BROOCH
The pierced geometric panel with a central mixed cushion cut diamond, estimated to weigh approximately 1.50 carats, within a surround of single and old European cut diamonds, unmarked
Size/dimensions: 6.5 x 3.4cm
Gross weight: 15.4 grams

£1,500-2,000



61

61
A MID 20TH CENTURY DIAMOND PLAQUE BROOCH
CIRCA 1950S
The rectangular frame wrapped with pierced geometric motifs, set throughout with old European and baguette cut diamonds, diamonds approximately 9.50 carats total, French export poinçon, maker's mark
Size/dimensions: 6.0cm wide
Gross weight: 27.2 grams

£2,000-3,000



62

62
A LATE 19TH CENTURY DIAMOND PANEL/BROOCH
The openwork shaped panel set with a central cluster of rose cut diamonds, between scrolled rose cut diamond borders, composite, later rhodium plated
Size/dimensions: 3.7cm wide
Gross weight: 10.6 grams

£1,200-1,800



64

64
A DIAMOND THREE STONE RING
Set with three graduated old European cut diamonds, diamonds weighing approximately 1.70 carats total, stamped 18
Size/dimensions: ring size K 1/2
Gross weight: 2.9 grams

£800-1,200



63

63
A NATURAL PEARL NECKLACE
Composed of a graduated strand of 4.6 - 8.2mm natural pearls to a pierced navette shaped clasp set with old cut diamonds, clasp stamped Platinum
Size/dimensions: 45.0cm long
Gross weight: 20.7 grams

Offered for sale with a Gemmological Certification Services (GCS) report, no. 5785-1645, dated 21st March 2025, stating:
Variety: Natural Nacreous Pearl
Environment: Saltwater
Comment: No indications of treatment

£3,000-5,000



66

65
AN AQUAMARINE AND DIAMOND DRESS RING
 Set with three graduated oval cut aquamarines in a brilliant cut diamond surround, stamped Pt950
 Size/dimensions: ring size O
 Gross weight: 7.6 grams

£800-1,200

66
KIKI MCDONOUGH, A BLUE TOPAZ AND DIAMOND NECKLACE LONDON 2004
 Composed of a series of oval cut blue topaz between curved brilliant cut diamond sections, mounted in 18ct white gold, maker's mark KMCD, UK hallmark
 Size/dimensions: 41.0cm long
 Gross weight: 33.9 grams

£3,000-5,000



67

67
AN AQUAMARINE AND DIAMOND PENDANT
 The square mixed cut aquamarine within a chain link style frame pavé and collet set with brilliant cut diamonds, to a fancy link chain, mounted in platinum, aquamarine weighing approximately 20 carats, UK hallmark
 Size/dimensions: 4.2cm long
 Gross weight: 16.8 grams

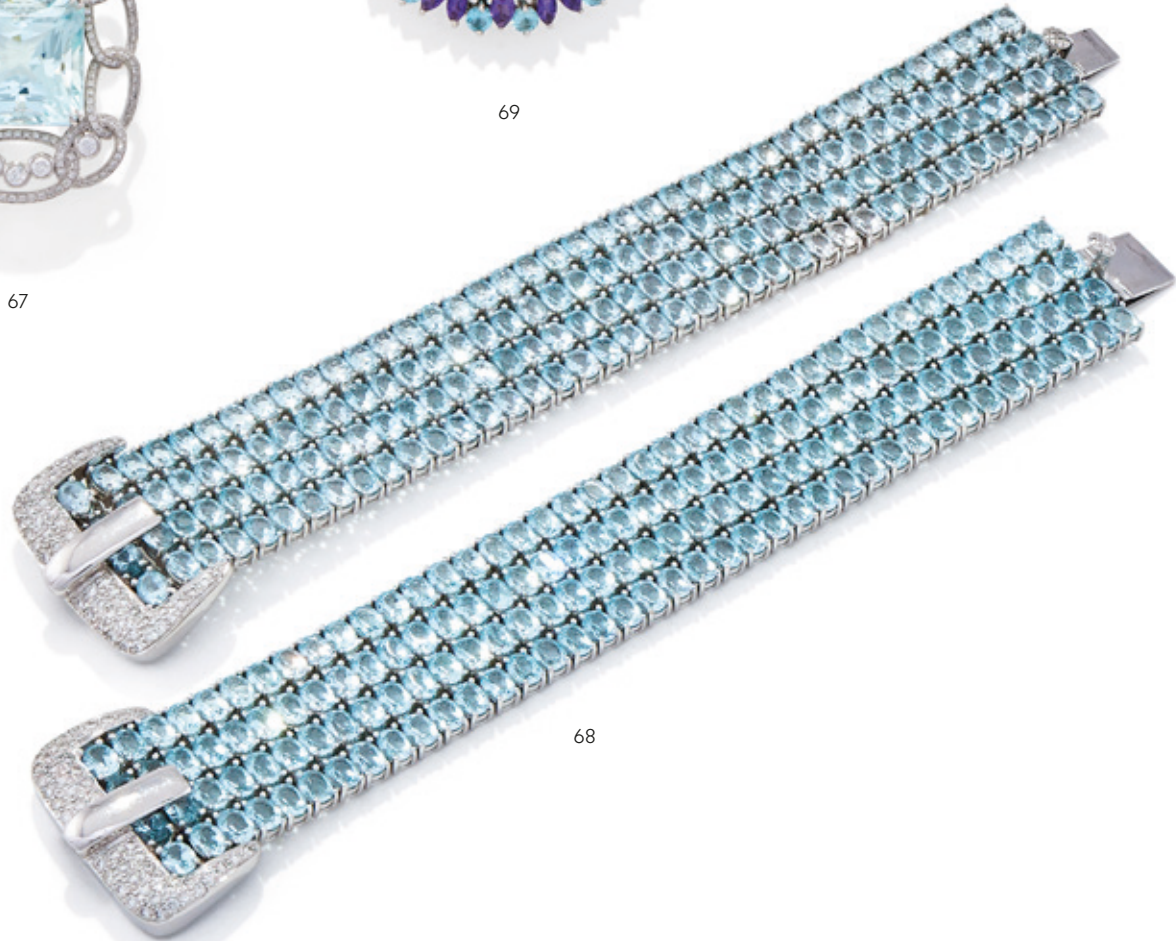
£2,000-3,000



69

68
A PAIR OF AQUAMARINE AND DIAMOND STRAP BRACELETS
 Each composed of four rows of oval cut aquamarines, to a buckle style clasp pavé set with brilliant cut diamonds, stamped 18K
 Size/dimensions: 17.0cm long
 Gross weight: 162.8 grams

£6,000-8,000



68

69
AN AMETHYST AND BLUE TOPAZ PENDANT
 Designed as a collet set oval cut blue topaz, within a cluster surround set with oval and circular cut blue topaz and pear shaped and marquise cut amethysts, unmarked
 Size/dimensions: 6.5cm long (including bale)
 Gross weight: 48.8 grams

£1,500-2,000



70

70
AN EARLY 20TH CENTURY
FRENCH ROCK CRYSTAL,
SAPPHIRE AND DIAMOND
BROOCH
CIRCA 1915
The central rock crystal panel
delicately engraved with
Terpsichore playing the lyre and
putti dancing or playing a flute,
within a pierced surround set with
calibr  cut sapphires and single
cut diamonds, numbered 58170,
French poin on
Size/dimensions: 4.8cm long
Gross weight: 7.6 grams

 1,500-2,000



71

71
VERGER FR RES FOR
BOUCHERON, A PLATINUM,
DIAMOND AND PEARL
WRISTWATCH WITH ENAMEL
DIAL BY PAILLET
CIRCA 1910
The elongated octagonal ivory
dial painted with putti and doves,
with a central Arabic hour ring,
within a rose-cut diamond bezel,
to a woven link bracelet with
seed pearl border, maker's mark
FV, French platinum poincon, dial
signed Paillet, fitted gilt tooled
leather case by Boucheron with
gilt initials I.R.H
Size/dimensions: 17.2cm long
Gross weight: 31.8 grams

Please note Dreweatts have
applied for a de minimis
exemption licence for the ivory
in this lot
Ref: 59BUMKTN

 3,000-5,000



72

72
A MID 20TH CENTURY
DIAMOND SINGLE STONE
RING
The old European cut diamond,
weighing approximately 2.82
carats, between stepped
baguette cut diamond two stone
shoulders, stamped Plat
Size/dimensions: ring size M
Gross weight: 4.9 grams

 2,000-3,000



73

73
A DIAMOND BAR BROOCH
CIRCA 1920
The tapered bar set with old
mine cut diamonds in millegrain
settings, unmarked
Size/dimensions: 5.4cm long
Gross weight: 3.8 grams

 500-700





74

74

A PAIR OF BLUE TOPAZ AND PERIDOT PENDENT EARRINGS

Each facettted blue topaz drop suspended from a pear shaped peridot surmount in brushed collet setting, post fittings

Size/dimensions: 3.9cm long

Gross weight: 14.0 grams

£500-700



75

75

AN AQUAMARINE DRESS RING

The oval cabochon aquamarine in an 18ct gold collet setting of brushed finish, maker's mark JLM, UK hallmark

Size/dimensions: ring size O

Gross weight: 18.0 grams

£600-800



76

76

FRED, A 'FORCE 10' DIAMOND SET BRACELET

Designed as a buckle with brilliant cut diamond accents, on three interchangeable red, silver or black cord bracelets, signed Fred, numbered 1430862, French poinçon, maker's mark, stamped Au750, maker's case

Size/dimensions: 17.5cm long

Gross weight: 16.8 grams

£1,200-1,800



78

77

AN AQUAMARINE, ONYX AND DIAMOND PENDANT

The cut cornered rectangular step cut aquamarine within a brilliant cut diamond border, mounted on a cabochon onyx base, to a diamond set suspension loop, suspended from a 14ct gold trace link chain, pendant stamped Au750, chain with European control mark

Size/dimensions: pendant 3.2cm long

Gross weight: 6.6 grams

£600-800



77

78

BOTTEGA VENETA, AN 'INTRECCIATO' GOLD DRESS RING

Of bombé woven 18ct gold design to a shaped hoop, signed BV, Italian control marks, European control mark

Size/dimensions: ring size K

Gross weight: 14.5 grams

£400-600



80



79



81



82



83



84

79
A SAPPHIRE AND DIAMOND DRESS RING
Of tiered design, set with a graduated line of calibré cut sapphires between brilliant cut diamond and calibré cut sapphire borders, unmarked
Size/dimensions: ring size M (sizing band)
Gross weight: 8.7 grams

£700-1,000

80
A DIAMOND AND COLOURED DIAMOND NECKLACE AND EARRINGS
The necklace composed of brilliant cut diamond and black diamond clusters, within diamond line borders, the earrings pavé set with brilliant cut black diamonds with a central brilliant cut diamond cluster, post and clip fittings, stamped 750
Size/dimensions: necklace 42.0cm, earrings 1.8cm long
Gross weight: 94.5 grams

Provenance:
Private Collection

£2,500-3,500

81
A PAIR OF SAPPHIRE AND DIAMOND CLUSTER EARRINGS
Each circular cut sapphire within a brilliant cut diamond surround, post fittings, unmarked
Size/dimensions: 1.3cm wide
Gross weight: 4.7 grams

£1,200-1,800

82
BULGARI, A DIAMOND SET 'B.ZERO1' RING
The sprung 18ct white gold triple coil set with brilliant cut diamonds between raised polished borders engraved 'BVLGARI, BVLGARI', signed Bulgari, common convention mark, Swiss and Italian marks
Size/dimensions: ring size Q
Gross weight: 14.2 grams

£1,500-2,000

83
BULGARI, A 'B.ZERO1' RING
The sprung 18ct white gold quadruple coil between raised polished borders engraved 'BVLGARI, BVLGARI', signed Bulgari, common convention mark, Swiss and Italian marks
Size/dimensions: ring size Q
Gross weight: 12.8 grams

£700-1,000

84
BULGARI, A DIAMOND SET 'B.ZERO1' RING
The sprung 18ct white gold triple coil set with brilliant cut diamonds between raised polished borders engraved 'BVLGARI, BVLGARI', signed Bulgari, common convention mark, Swiss and Italian marks
Size/dimensions: ring size K
Gross weight: 12.0 grams

£1,500-2,000



85

85
MARINA B, A DIAMOND 'ONDA' DRESS RING

The wide tapered open shank, pavé set to the front with brilliant cut diamond scroll motifs, between reeded shoulders, signed Marina B, numbered C2522, maker's mark, stamped 750

Size/dimensions: ring size N
Gross weight: 13.2 grams

£2,000-3,000



86

86
AN AMETHYST AND DIAMOND NECKLACE

Composed of alternating rectangular step cut and oval cut amethysts, the front with brilliant cut diamond cluster spacers, suspending a fringe of oval cut amethyst and diamond cluster links and a central rectangular scissor cut amethyst drop, unmarked
Size/dimensions: 45.5cm long
Gross weight: 87.8 grams

£3,000-5,000



87

87
A PAIR OF AMETHYST AND DIAMOND EARRINGS

Each designed as two graduated circular cut amethysts in brilliant cut diamond surrounds, suspending a pear shaped amethyst and diamond cluster drop, post fittings, unmarked
Size/dimensions: 5.2cm long
Gross weight: 13.7 grams

£1,800-2,200





88

88
AN ENAMEL AND PEARL PENDANT NECKLACE
EARLY 19TH CENTURY AND LATER
The chatelaine style pendant with royal blue enamel detail and pink and green gold floral and foliate motifs, suspending three tassel drops, on an associated ropetwist lonchain accented with pearl spacers, with later clasp, clasp stamped 750, pendant unmarked
Size/dimensions: pendant 8.6cm long
Gross weight: 66.7 grams

Pearls untested and unwarranted as natural pearls.

£1,500-2,000



89



90

89
A LATE 19TH CENTURY DIAMOND THREE STONE RING
Set with three graduated old European cut diamonds with rose cut diamond points, stamped 18ct
Size/dimensions: ring size P
Gross weight: 4.0 grams

£700-1,000

90
AN EARLY 20TH CENTURY SAPPHIRE AND DIAMOND SEVEN STONE RING
Composed of alternating cushion shaped sapphires and old European cut diamond two stone sections, to a scrolled gallery, unmarked
Size/dimensions: ring size s
Gross weight: 5.9 grams

£3,000-5,000



91



93



94

91
A SAPPHIRE AND DIAMOND BAR BROOCH
CIRCA 1900 AND LATER
Set with alternating circular cut sapphires and old European cut diamonds, the central sapphire framed by diamond set crescents, between tapered links, later mounted on a bar brooch, brooch fitting stamped 750
Size/dimensions: 5.8cm long
Gross weight: 7.9 grams

£500-700

92
AN EARLY 20TH CENTURY OPAL AND DIAMOND STAR JEWEL
Centrally set with an old European cut diamond in a twelve ray star surround, set with oval cabochon opals and rose cut diamonds, later converted, brooch fitting detached
Size/dimensions: 3.9cm long
Gross weight: 10.8 grams

£800-1,200



92

93
A LATE 19TH CENTURY SAPPHIRE AND DIAMOND SEVEN STONE RING
Composed of alternating oval cut sapphires and old European cut diamonds with rose cut diamond two stone sections, to a scrolled gallery, unmarked
Size/dimensions: ring size O 1/2
Gross weight: 6.5 grams

£700-1,000

94
A DIAMOND FIVE STONE RING
CIRCA 1880 AND LATER
The graduated old mine cut diamonds with rose cut diamond accents between, to a pierced gallery and later shank, stamped 18ct
Size/dimensions: ring size S
Gross weight: 3.4 grams

£600-800

95
A VICTORIAN GEM SET SERPENT NECKLACE
CIRCA 1860

The head with floral and foliate decoration, set with a pear shaped pink foiled gem and emerald eyes, suspending a pink foiled gem drop between vines, to an articulated tapered snake link chain, unmarked, fitted case by A. Taffinder, Rotherham
Size/dimensions: approximately 39.0cm long
Gross weight: 15.3 grams

£1,800-2,200



95

96
A VICTORIAN GARNET SERPENT NECKLACE
CIRCA 1860

The foliate engraved head with drop shaped cabochon garnet crest and emerald eyes, suspending a heart-shaped locket with garnet carbuncle and glazed verso, to a graduated snake link chain, unmarked
Size/dimensions: 40.5cm long
Gross weight: 26.4 grams

£1,500-2,000



96



97

97
A MID 19TH CENTURY ENAMEL AND
DIAMOND SERPENT BANGLE
CIRCA 1840S

The hinged body decorated with royal blue enamel, the head and tail set with old cushion, pear and rose cut diamonds, with cabochon red gemstone eyes, tip of tail deficient, principal three diamonds approximately 3.0 carats total
Size/dimensions: inner diameter 5.0cm
Gross weight: 33.4 grams

£5,000-8,000



99

98
A PAIR OF LATE 19TH CENTURY GEM SET
SNAKE STICKPINS
CIRCA 1880

Each snake head set with a navette shaped cabochon emerald within an old European and rose cut diamond surround and ruby eyes, mounted in silver and gold, unmarked
Size/dimensions: terminals 1.5cm long
Gross weight: 6.4 grams

£700-1,000



98

99
AN 18 CARAT GOLD ALBERT CHAIN WITH
TWO EARLY 19TH CENTURY FOB SEALS

The curb link chain with lobster claw and ring bolt clasps, suspending a 19th century serpent split hoop with two 19th century fob seals, one with a ropetwist hooped mount with an owl, the other with a scalloped foliate setting with a shield shaped agate matrix carved with a boar's head above a ducal coronet with gothic initials HE, with purple foil backed setting, chain with partial 18 carat gold hallmarks
Size/dimensions: chain 36cm long
Gross weight: 37.4 grams

The boar's head seal is possibly for the Evans family of Salop (Shropshire), and the owl seal with unusual mount detail is possibly for the Saville family or the Calvert family.

£800-1,200

GWYSANEY HALL THE DAVIES-COOKE COLLECTION LOTS 100-127



The following lots are part of the collection of the Davies-Cooke family of Gwysaney Hall, North Wales. Gwysaney Hall is a Jacobean house situated in wooded parkland between Mold and Northop in North Wales.

The land has been in the same family's custodianship, by descent, since at least the early thirteenth century.

The Davies-Cooke family were connected through marriage to the Earls of Mount Cashell and the Earls of Kingston in Ireland through Phillip Davies-Cooke's (1793-1853) marriage to Lady Helena Caroline (nee King, 1801-1871) in 1829.

Helena's mother, Helena (nee Moore, 1773-1847) was married to George King 3rd Earl of Kingston (1771-1839), and her father was Stephen Moore 1st Earl Mount Cashell (1730-1790) who was married to Helena (nee Rawdon, 1744-1792).



Lot 106 belonged to Mary Puleston (nee Davies, 1741-1802) who married Philip Puleston (1741-1766) in 1764. Mary Davies was the daughter of Robert Davies Esq. (1715-1763) of Gwysaney and Llanech, Flintshire and Letitia Whitehall (1715-1745) daughter of Broughton Whitehall of Broughton, Flintshire. She was the coheiress of her uncle John Davies of Gwysaney, and it is through Mary that the Gwysaney estate came to the Davies-Cooke family, with their daughter Frances (1765-1818) marriage to Bryan Cooke (1756-1821) of Owston near Doncaster, hence beginning the Yorkshire family connection.

Frances and Bryan's son Philip Davies-Cooke (1793-1853) was the first of his family to inherit both Owston and Gwysaney. His marriage to the aforementioned Helena King and the subsequent birth of Philip Bryan Davies-Cooke (1832-1903) has led to the Gwysaney estate staying the in Davies-Cooke family for generations.

For further details about the collection, visit:
www.dreweatts.com/news-videos/gwysaney-hall-a-welsh-family-s-portrait-of-british-history-14767



100



101



102

100 A LATE 18TH CENTURY MOURNING RING, STEPHEN 1ST EARL MOUNT CASHELL AND HIS WIFE COUNTESS HELENA

The marquise shaped glazed panel containing a woven hair ground and applied gold coroneted MC monogram, the reverse inscribed Stephen 1st Earl of Mount Cashell d. 14. May 1790 Helena Countess of Mount Cashell d. 27, May 1792, to tapered gold shank
Size/dimensions: ring size O 1/2
Gross weight: 6.6 grams

Stephen Moore, 1st Earl Mount Cashell (1730-1790) and Lady Helena Rawdon (1744-1792).

Lord Mount Cashell was an Irish landowner and politician, he succeeded as the 2nd Viscount Mount Cashell, of the city of Cashell and the 2nd Baron Kilworth, of Moore Park, co. Cork 1766, and was created as the 1st Earl of Mount Cashell in 1781. Lord and Lady Mount Cashell were the parents of Lady Helena King (Moore) (1773-1847) who married George King, 3rd Earl of Kingston.

£300-500

101 A LATE 18TH CENTURY FOB SEAL, LADY HELENA COUNTESS OF MOUNT CASHELL

The oval red agate matrix with Earl's coronet and HM monogram, the setting with reeded and flower head detail, unmarked, with an attached early 20th century paper scroll with seal details written in black ink
Size/dimensions: 2.7cm high
Gross weight: 5.1 grams

Lady Helena Moore was born in 1773 in Tipperary, Ireland, the daughter of Stephen Moore (1730-1790) 2nd Viscount Mount Cashell, later Earl of Mount Cashell, by his wife Helena Rawdon (1744-1792). In 1794 she married George King (1771-1839) who in 1799 succeeded his father as 3rd Earl of Kingston. After that date until her death in 1847 she would have been addressed as Helena King Countess of Kingston. Her mother, also HM, was before her marriage Helena Rawdon and afterwards Lady Helena Moore (senior) until 1781, after which she would have been addressed as Helena Moore Countess of Mount Cashell, until her death in 1792.

£300-500

102 A LATE 18TH CENTURY FOB SEAL, LADY HELENA COUNTESS OF KINGSTON

The rock crystal matrix with HK below a coronet, within a polished strap work setting, unmarked, with an attached early 20th century paper scroll with seal details written in black ink; together with a further agate fob seal with initials HC
Size/dimensions: first 3.3cm high; second 2.9cm high
Gross weight: 10.0 grams

Lady Helena King (Moore) was born on 20 May 1773 in Tipperary, Ireland. She was the daughter of Stephen Moore, 1st Earl Mount Cashell and Lady Helena Rawdon. In 1794 she married George King, 3rd Earl of Kingston, son of Robert King, 2nd Earl of Kingston and Caroline FitzGerald. George King succeeded his father in 1799, and from that point she would have been addressed as Helena King Countess of Kingston until her death in 1847.

£250-350



103
A EARLY 19TH CENTURY FOB SEAL, EARLS OF KINGSTON
The black agate matrix with a K below an Earl's coronet, unmarked, with an early 20th century paper scroll with seal details written in black ink; together with a further 19th century fob seal, carved with a classical lady's head in profile, unmarked
Size/dimensions: first seal 2.5cm long; second 2.7cm long
Gross weight: 9.7 grams

The earldom was created in 1768 for Sir Edward King (1726-1797) 5th Baronet of Boyle Abbey, co. Roscommon. Subsequently the same crest and coronet was used by the descendant earls, amongst whom is George King (1771-1839) 3rd Earl of Kingston.

£300-500

104
AN EARLY 19TH CENTURY FOB SEAL, SIR GEORGE KING, EARL OF KINGSTON
The oval polished cornelian matrix engraved with the crest and coronet, in a scrolled foliate gold setting, unmarked, with an early 20th century paper scroll with seal details written in black ink
Size/dimensions: 2.8cm high
Gross weight: 10.4 grams

This is the crest and coronet of the Earls of Kingston in the Peerage of Ireland. The earldom was created in 1768 for Sir Edward King (1726-1797) 5th Baronet of Boyle Abbey, co. Roscommon. Subsequently the same crest and coronet was used by the descendant earls, amongst whom is George King (1771-1839) 3rd Earl of Kingston. He was the son of Robert King, 2nd Earl of Kingston of Mitchelstown Castle, who he succeeded in 1799. In 1794 George married Lady Helena, the daughter of Stephen Moore, 1st Earl Mount Cashell. They had six children including Lady Helena King who married Philip Davies-Cooke in 1829.

£300-500

105
A LATE 18TH CENTURY FOB SEAL, SIR EDWARD KING, EARL OF KINGSTON
The oval cornelian matrix engraved with the arms with coronet surmount, within a chased floral and scrolled setting, unmarked, with an attached early 20th century paper scroll with seal details written in black ink
Size/dimensions: 3.4cm high
Gross weight: 22.4 grams

This is the full armorial of the King family, Baronets of Boyle Abbey, co. Roscommon and Earls Kingston, both in the Peerage of Ireland. Sir Edward King, 1st Earl of Kingston (1726-1797) held the office of Member of Parliament for Boyle between 1749 and 1760 and later M.P. for County Sligo between 1761 and 1764. He succeeded as the 5th Baronet King, of Boyle Abbey, co. Roscommon on 22 May 1755 and later in 1768 he was created 1st Earl of Kingston [Ireland]. He was appointed Privy Counsellor [Ireland] on 20 January 1794. He also held the office of Grand Master of the Freemasons [Ireland] between 1761 and 1763 and again between 1769 and 1770.

£300-500



106
A LATE 18TH CENTURY FOB SEAL, MARY PULESTON
The agate matrix engraved with the arms of Philip Pulston and Mary Pulston (Davies), within a scrolled reeded gold setting, unmarked, with an attached early 20th century paper scroll with seal details written in black ink; together with a citrine three sided seal with similar arms
Size/dimensions: seal 3cm high
Gross weight: 26.5 grams

These are the impaled arms of Philip Puleston (1741-1766) of Hafod-y-Wren, Denbighshire and his wife Mary Davies (1741-1802). They were married at Wrexham in 1764. The oval shield suggests that they were intended for use by his wife Mary. Mary Davies was the daughter of Robert Davies Esq. (1715-1763) of Gwysaney and Llanech, Flintshire and Letitia Whitehall (1715-1745) daughter of Broughton Whitehall of Broughton, Flintshire. She was the coheiress of her uncle John Davies of Gwysaney.

£300-500

107
A REGENCY FOB SEAL, CHARLOTTE BULSTRODE COOKE
The white agate matrix engraved with arms of Charlotte Bulstrode Cooke, within a chased floral setting, unmarked, with an attached early 20th century paper scroll with seal details written in black ink
Size/dimensions: 2.8cm high
Gross weight: 10.0 grams

Charlotte Bulstrode Cooke (1777-1850) was the second wife of her distant widower cousin Bryan Cooke of Owston, Yorkshire (1756-1821), former MP for Malton, they married on 17 April 1821. The arms would have been used during her widowhood 1821-1850.

£300-500

108
A LATE 18TH CENTURY CITRINE TABLE SEAL, OWSTON
The polished faceted citrine handle to a reeded gold fitting, with a foil backed cushion shaped citrine matrix engraved with a demi lion rampant with coronet, and Owston
Size/dimensions: 5.7cm high
Gross weight: 22.0 grams

This table seal may have belonged to Bryan Cooke of Owston, Yorkshire (1756-1821), former M.P. for Malton.

£400-600



109
A REGENCY FOB SEAL, CARVED WITH THE ARMORIAL OF PHILIP DAVIES-COOKE
The cushion shaped carnelian matrix carved with an armorial, within a reeded setting to a polished shank and loop, unmarked, with an attached early 20th century paper scroll with seal details written in black ink
Size/dimensions: 4.2cm high
Gross weight: 26.0 grams

These are the quartered arms and crest of Philip Davies-Cooke (1793-1853) of Owston Hall, Yorkshire and Gwysaney, Flintshire. He was the High Sheriff of Flintshire in 1824 and held the office of Justice of the Peace for Flintshire. He is the son of Bryan Cooke (1756-1821) of Owston Hall, M.P. for Malton, Yorkshire by his first wife Frances Puleston (1765-1818). In 1829 Philip married in Ireland Helena Caroline King (1800-1871) daughter of George King (1771-1839) 3rd Earl of Kingston.

£300-500



110



111



112

110

A MID VICTORIAN COMMEMORATIVE LOCKET FOR PRINCESS ELIZABETH STUART

The oval blue enameled panel with a glazed compartment containing a scroll of hair from Princess Elizabeth Stuart, with seed pearl coronet, the border engraved *2nd Daughter of Charles 1. Born 28 Decr 1635. Died in Carisbrook Castle 8 Sepr 1650. Hair cut off in 1856 when her coffin at Newport Church was opened.*, with glazed compartment verso

Size/dimensions: 7.2cm long

Gross weight: 47.4 grams

Please refer to our website for further details on this lot.

£300-500

111

TWO LATE 18TH CENTURY MOURNING LOCKETS, EDWARD KING 1ST EARL OF KINGSTON AND COUNTESS JANE

The first locket with a lovers knot of blonde hair over a woven panel of brown hair, with a blue enameled and bright cut border, the gold reverse with the inscription *Jane Countess of Kingston exchanged this life for a better. 21 May 1784 aged 47 years, and was followed by her deservingly beloved son Henry. 6. July 1785. Aged 17 years. Blessed are the Dead which Die in the Lord for they Rest from their labours and their works do follow them, within a border with Oh Death! Where is thy sting? O Grave! Where is Thy Victory.*; together with a locket commemorating Edward, 1st Earl of Kingston, the front with a knot of grey hair upon a brown hair ground, the gold border inscribed *Let me Die the death of the Righteous and let my last end be like his*, the back of the locket inscribed with *Edward Earl of Kingston exchanged this life for a better. 14 Novr 1797 having survived 13 years his beloved and much lamented Wife Jane Countess of Kingston, Blessed are the Dead which Die in the Lord for they Rest from their labours and their works do follow them, within a semi border inscribed with O' Death! Where is thy sting? 'O Grave Where is Thy Victory*

Size/dimensions: 5.5cm and 6.2cm long

Gross weight: 40.8 grams

Please refer to our website for further details on this lot.

£400-600

112

A GEORGIAN SENTIMENTAL LOCKET, 3RD EARL OF KINGSTON

The locket with a woven panel of hair from Sir George King, 3rd Earl of Kingston, with applied GK, the reverse with Helena, the Countess of Kingston's hair, in a gilt frame, with an attached early 20th century scroll with details in black ink

Size/dimensions: 6.7cm long

Gross weight: 26.9 grams

George King (1771-1839) 3rd Earl of Kingston, was the son of Robert King, 2nd Earl of Kingston of Mitchelstown Castle, who he succeeded in 1799. In 1794 George married Lady Helena, the daughter of Stephen Moore, 1st Earl Mount Cashell. They had six children including Lady Helena King who married Philip Davies-Cooke in 1829.

£200-300



113

113

A SENTIMENTAL HAIRWORK BRACELET, WITH THE HAIR OF LADY HELENA DAVIES-COOKE AND LADY ADELAIDE WEBBER

CIRCA 1829

The woven hairwork bracelet with rectangular chased floral and scrolled gold clasp, the central panel inscribed with the initials *HCK & ACK 1829*, the hinged panels inscribed *Hair of Lady Helena C. Cooke and Lady Adelaide C. Webber*

Size/dimensions: 16.7cm long, 3cm wide

Gross weight: 20.9 grams

Helena and Adelaide were the daughters of George King, 3rd Earl of Kingston (1771 - 1839) and Lady Helena (1773-1847), the daughter of Stephen Moore, 1st Earl Mount Cashell. They had six children including Lady Helena Caroline King (1800-1871) who married Philip Davies-Cooke on 8 December 1829, and Lady Adelaide Charlotte King (died August 1854), who married Charles Tankerville Webber (died March 1854), son of Daniel Webb Webber, on 2 August 1834. The inscriptions to the smaller hinged sections are later than the monograms with the date of 1829 on the central panel, as the ladies are both using their married names.

£300-500



114

114

TWO REVERSE PAINTED MONOGRAM JEWELS, LADY HELENA CAROLINE COOKE

The oval locket with reverse painted HC monogram, the border with motto *Spes Tutissima Coelis*, the locket containing a coil of hair, the border inscribed *The Lady Helena Caroline Cooke Born 11th April 1801 Died 9th May 1871*; together with a similar reverse painted intaglio monogram stickpin, the gold setting inscribed *Lady Helena C. Cooke b:1801 d:1871 Spes Tutissima Coelis*, unmarked

Size/dimensions: locket 4.6cm long including bale, stickpin terminal 2cm diameter

Gross weight: 23.3 grams

The motto is that used by the King family and Viscounts Lorton. Helena Caroline King (1801-1871) eldest daughter of George King (1771-1839) 3rd Earl of Kingston and his wife Helena Moore (1773-1847) daughter of Stephen Moore (1730-1790) 2st Earl Mount Cashell.

£500-700



115

115
A MID 17TH CENTURY ROCK CRYSTAL AND ENAMEL HEART LOCKET
The domed rock crystal cover opening to a compartment with a white enamelled back decorated with red heart within a laurel leaf and berry surround, the reverse of the case with a white enamelled ground and polychrome enamelled flowers including yellow tulips and roses, with a looped bale, unmarked
Size/dimensions: 2.7cm long
Gross weight: 5.4 grams

This piece has symbolic significance related to the language of flowers. The heart surrounded by the laurel wreath links to the myth of Apollo and Daphne, as well as the laurels connotations with victory, the tulips representing prosperity and the rose for romantic love.

£300-500



116

116
A REGENCY GARNET SET LOCKET
CIRCA 1829
The heart shaped panel with chased scrolled decoration, with a central heart shaped cabochon garnet, with a coiled snake hoop lock, verso with a glazed hairwork compartment, inscribed Robert & Emily Cook Dec 1829
Size/dimensions: 4.1cm long
Gross weight: 7.3 grams

£500-700



117

117
AN EARLY 19TH CENTURY FOB SEAL OF A SHACKLED CUPID AND A WATCH KEY IN THE FORM OF THE TRIUMPH OF LOVE
CIRCA 1820
The fob in the form of a standing Cupid, with shackled waist and ankles, resting on a pickaxe, the foil backed cushion shaped amethyst matrix engraved with a praying Cupid with the motto *A Bien Pour Vous*; together with a three colour watch key in the form of an arrow and quiver crossed with a bow and flaming torch, unmarked,
Size/dimensions: cupid fob 2.8cm high including bale; watch key 3.2cm long
Gross weight: 16.4 grams

£700-1,000



118

118 Y
A EARLY 19TH CENTURY CARVED CORAL CUPID
The coral carved as cupid with shell horn to his mouth, seated upon a mound with bow in hand and arrows in quiver behind his back, unmarked
Size/dimensions: 3.6cm high
Gross weight: 11.0 grams

£300-500



119

119
A GEORGE III MOURNING RING, SPENCER PERCEVAL
LONDON 1811-12
The broad band with black enamel and gold script *Rt.Hon: Spencer Perceval. OB 11.May 1812 AE 49*, the inside with inscription *died by the hand of an assassin*, with full hallmark and maker's mark SG for Samuel Glover
Size/dimensions: ring size N 1/2
Gross weight: 5.0 grams

Spencer Perceval, was Prime Minister from 1809 to 1812, and is the only British Prime Minister to ever have been assassinated. He was shot in the lobby of the House of Commons by John Bellingham. Bellingham had been held in a debtors prison in Russia after being accused of insurance fraud, and despite requesting assistance from the British authorities was left to his fate, and upon his return he blamed the authorities for his ruin. He sought compensation, and when it was refused for a fifth time he shot Perceval in the heart. A week after Perceval's assassination Bellingham had was arrested, tried and found guilty, he was hung on the 18th May 1812.

A matching example is held by the British Museum, museum number AF. 1517 and another is in the collection at the V & A museum.

£500-700



120

120
A MID VICTORIAN GOLD AND BANDED AGATE LOCKET
CIRCA 1860
The front with an oval cabochon banded agate in a gold setting, with a border of collet set banded agates, verso with a glazed panel containing a photograph of possibly Lady Helena Caroline Davies-Cooke (nee King), with hoop bale, unmarked
Size/dimensions: 4.7cm long
Gross weight: 14.8 grams

£400-600

121
A MID 19TH CENTURY MOURNING LOCKET
The oval locket with a black enamelled Greek Key style border and a central oval cabochon banded agate, verso with a glazed locket holding a scroll of hair, the gold setting engraved *1853 P.D.C From P.L.A*
Size/dimensions: 3.7cm long
Gross weight: 8.1 grams

Philip Davies-Cooke (1793-1853) was the son of Bryan Cooke and Frances Puleston. He was the first of his family to inherit both Owston and Gwysaney, as the Gwysaney estate was inherited through his mothers side of the family. He married Helena Caroline King in 1829.

£200-300



121



122

122
A GEORGE II MOURNING RING, LAETITIA CAREW
CIRCA 1730
The ring with black enamelled band with Laetitia Carew: OB : 5: Feb : 1730, unmarked
Size/dimensions: ring size M
Gross weight: 4.1 grams

Laetitia, daughter of Edward Vaughan of Trawsgoed (Ceredigion) was married to Robert Davies IV (1658-1710) who succeeded his father at Llannerch. Robert was an antiquary and naturalist and an acknowledged collector of books and manuscripts, whose collection of early and rare poetry has prevented many important pieces from being lost. Due to Robert travelling to source items for his collection Letitia was left to run the Llannerch estate, as well as finding suitable tenants for Gwysaney.

£250-350



123

123
A VICTORIAN SAPPHIRE AND DIAMOND CRESCENT BROOCH
CIRCA 1880
The crescent with a row of graduated circular cut sapphires bordering a row of old cut diamonds, mounted in silver and gold, unmarked
Size/dimensions: 2.6cm long
Gross weight: 5.4 grams

£400-600



124

124
A GRADUATED PEARL AND SEED PEARL NECKLACE
The necklace with graduated pearls and seed pearls on a knotted strand, to a diamond three stone clasp
Size/dimensions: 36.2cm
Gross weight: 5.7 grams

Please note the pearls are untested and unwarranted as natural pearl.

£400-600



126

125
A LATE 17TH CENTURY ENAMELLED TABLE CUT GEM STONE RING
The table cut foil backed smoky quartz within a scalloped collet surround, with blue enamelled gallery with pink and white dot accents, to scrolled shoulders, in an antique shagreen case
Size/dimensions: ring size approximately M
Gross weight: 2.4 grams

£300-500



128

OTHER PROPERTIES

128
AN ANTIQUE ETRUSCAN RIVIVAL GOLD AND CARNELIAN SEAL RING
The antique carved and polished carnelian scarab beetle bead, the reverse engraved with a soldier holding a spear within an engraved border, set on a later pin to coiled wire shoulders and polished hoop shank, unmarked
Size/dimensions: ring size approximately I 1/2
Gross weight: 2.3 grams

£300-500



127

127
AN ANTIQUE ETRUSCAN GOLD AND BANDED AGATE SEAL RING
The carved and polished scarab beetle bead engraved to the reverse with the goddess Turan with a swan within an engraved border, set on a pin, to beaded domed disk shoulders and reeded hoop shank, lightly scratched inscription to the inside of the shank
Size/dimensions: ring size approximately G
Gross weight: 2.5 grams

The ring has an attached panel inscribed
Etruscan ring found at Civita- Castellana on site of Falerium Vetus.. Got at Rome 1860

£600-800



129

129
AN ENAMELLED GOLD MOUNTED ROCK CRYSTAL PENDANT
THE FRAME SPANISH OR ITALIAN, LATE 17TH CENTURY; THE CENTRAL FIGURE PROBABLY LATER
The oval rock crystal sides enclosing an enamelled scene of St George and the Dragon, the gold frame enamelled on both sides with white, pink and black flowers alternating with green enamelled balusters, with chained suspension loops
Size/dimensions: 4.7cm wide
Gross weight: 49.5 grams

Provenance:
Private Collection

£4,000-6,000



130



131



132



134



133



135

130
A VICTORIAN 15CT GOLD BANGLE
BIRMINGHAM, 1905
The hinged bangle decorated to the front with floral and geometric ropetwist and beadwork motifs, reverse engraved with monogram 'CW', UK hallmark
Size/dimensions: inner dimensions 6.0 x 5.0cm
Gross weight: 13.9 grams

£400-600

131
A MID 20TH CENTURY GEM SET NOVELTY BROOCH
Modelled as a crowned swan, the baroque freshwater pearl body, with seed pearl and turquoise necklaces, to an old cut diamond pavé set head, neck and legs, ruby eye, seed pearl set crown and black enamel beak and feet, indistinctly numbered 65, unmarked
Size/dimensions: 4.2cm long
Gross weight: 13.0 grams

Provenance:
Private Collection

£3,000-5,000

132
A PAIR OF CULTURED PEARL AND DIAMOND EARRINGS
Each 6.3mm cultured pearl within an old European cut diamond surround, post fittings
Size/dimensions: 1.1cm long
Gross weight: 4.7 grams

£400-600

133
AN EDWARDIAN SEED PEARL AND ENAMEL DRAGONFLY BROOCH
The wings pavé set with graduated seed pearls, with cabochon garnet eyes and black and green enameled thorax and abdomen, with brooch and slide fittings, the brooch pin stamped 14K, in a fitted Goldmiths & Silversmith Company box
Size/dimensions: 3.5cm wide
Gross weight: 4.0 grams

£400-600

134
A LATE 19TH CENTURY TWO ROW SEED PEARL NECKLACE
Composed of two strands of graduated pearls and seed pearls, to a half pearl double cluster clasp, unmarked
Size/dimensions: 39.0cm long
Gross weight: 7.8 grams

Pearls are untested and unwarranted as natural pearls.

£300-500

135
AN EARLY 20TH CENTURY AND LATER ALEXANDRITE AND DIAMOND HEART CLUSTER BAR BROOCH
The heart shaped cluster set with graduated old European cut diamonds and a central pear shaped alexandrite, with later polished bar brooch setting, unmarked
Size/dimensions: cluster 1cm long
Gross weight: 2.6 grams

£600-800



136



137



138

136

A DIAMOND THREE STONE RING

Set with three graduated old European cut diamonds, diamonds weighing approximately 2.10 carats total, stamped 18ct Plat
Size/dimensions: ring size N
Gross weight: 3.1 grams

£1,500-2,000

137

AN EMERALD, DIAMOND AND CULTURED PEARL CHOKER
CIRCA 1900 AND LATER

The rectangular step cut emerald with canted corners in a star shaped surround set with old European cut diamonds, suspending a later baroque cultured pearl, to a later two strand cultured pearl choker, unmarked
Size/dimensions: 32.5cm long
Gross weight: 59.3 grams

£5,000-8,000

138

A DIAMOND THREE STONE RING

Set with three graduated old European cut diamonds, the centre weighing 2.22 carats, stamped 18ct
Size/dimensions: ring size R
Gross weight: 4.4 grams

£7,000-10,000





139



140



141



142



143



144

139

LEO DE VROOMEN, A RUBY AND DIAMOND 'TOI ET MOI' RING
LONDON, 1977
Collet set with an old cushion shaped diamond with a baguette cut diamond line shoulder, opposing a cushion shaped ruby with a calibré cut ruby shoulder, mounted in 18ct gold, maker's mark LDV, UK hallmark
Size/dimensions: ring size P
Gross weight: 12.9 grams

£3,000-5,000

140

DEAKIN & FRANCIS, A CULTURED PEARL AND GEM SET BROOCH
LONDON, 1987
The curved 18ct gold surmount set with three graduated oval cabochon emeralds, between pavé set diamond spacers and cabochon ruby terminals, suspending a baroque cultured pearl with calibré cut ruby surmount, maker's mark D&F, UK hallmark
Size/dimensions: 5.6cm wide
Gross weight: 20.3 grams

£700-1,000

141

A RUBY SINGLE STONE RING
The cushion shaped ruby in a tapered rubover setting, unmarked
Size/dimensions: ring size I
Gross weight: 18.8 grams

£2,000-3,000

142

A WATERMELON TOURMALINE DRESS RING
LONDON 2002
The rectangular cabochon watermelon tourmaline collet set between scrolled bifurcated shoulders, London hallmark, maker's mark
Size/dimensions: ring size L
Gross weight: 16.1 grams

£300-500

143

A PAIR OF SPINEL AND DIAMOND CLUSTER EARRINGS
Each designed as a flowerhead cluster of cabochon red spinel, within a brilliant cut diamond border, post and clip fittings, stamped 14K
Size/dimensions: 2.9cm long
Gross weight: 20.2 grams

£3,500-4,500

144

A STAR SAPPHIRE, RUBY AND WHITE SAPPHIRE CLUSTER RING
The cabochon star sapphire within a circular cut ruby and white sapphire surround, stamped Au750
Size/dimensions: ring size N
Gross weight: 15.1 grams

£800-1,200



145
A PAIR OF DIAMOND PENDENT EARRINGS
Each composed of five graduated layered circlets set throughout with brilliant cut diamonds, post fittings, unmarked
Size/dimensions: 7.2cm long
Gross weight: 14.2 grams

£1,000-1,500

146
A DIAMOND AND RUBY BEAD BRACELET
Composed of seven strands of faceted ruby beads, to brilliant cut diamond bar spacers and clasp, unmarked
Size/dimensions: 17.4cm long
Gross weight: 24.1 grams

£1,200-1,800

147
A DIAMOND BRACELET
Of openwork geometric and circlet links, set throughout with brilliant cut diamonds, stamped 750
Size/dimensions: 18.2cm long
Gross weight: 23.4 grams

£1,800-2,200



148
A PAIR OF RED SPINEL, DIAMOND AND ROCK CRYSTAL EARRINGS
Each composed of two clusters, the cushion shaped red spinel centres within brilliant cut diamond surrounds and carved rock crystal frames, post fittings, stamped Pt950
Size/dimensions: 3.3cm long
Gross weight: 10.2 grams

£1,200-1,800

149
A RUBY AND DIAMOND BRACELET
Composed of alternating pear shaped and oval cut rubies, between pear shaped connecting links set with brilliant cut diamonds, stamped Pt950
Size/dimensions: 18.0cm long
Gross weight: 15.4 grams

£2,000-3,000

150
DAVID MORRIS, A DIAMOND LINE BRACELET
Composed of a continuous row of brilliant cut diamonds in four claw settings, mounted in 18ct white gold, diamonds approximately 1.40 carats total, maker's mark DM, UK hallmark
Size/dimensions: 17.0cm long
Gross weight: 9.2 grams

£700-1,000

151
A PAIR OF RUBY AND DIAMOND PENDENT EARRINGS
Each square cut ruby and brilliant cut diamond cluster surmount, suspending three lines of alternating step cut rubies and brilliant cut diamonds, post fittings, stamped Pt950
Size/dimensions: 4.7cm long
Gross weight: 12.5 grams

£1,600-2,000



152

152

A DIAMOND THREE STONE RING

Set with old European cut diamonds in claw settings, stamped Plat 18ct

Size/dimensions: ring size N

Gross weight: 3.0 grams

£600-800



153

153

A NOVELTY BROOCH AND EARRINGS

CIRCA 1960S

Each designed as a hedgehog with radiating bar spikes, with circular cut pink stone eyes, brooch with twin prong fitting, earrings with clip fittings, stamped 750 A54

Size/dimensions: earrings 2.1cm, brooch 3cm long

Gross weight: 33.1 grams

£1,000-1,500



155

154

WEINGRILL, A PAIR OF EARRINGS

Each designed as a twisted rope, post and clip fittings, signed Weingrill, Italian control marks, stamped 750

Size/dimensions: 2.5cm long

Gross weight: 20.0 grams

£700-1,000



154



156

155

A DIAMOND BAND RING

The raised rotating central band, pavé set with twin rows of brilliant cut diamonds between stepped sides, maker's mark LP, French poinçon

Size/dimensions: ring size N

Gross weight: 14.5 grams

£700-1,000

156

A PAIR OF DIAMOND SET CUFFLINKS

Each designed as two graduated bar terminals with reeded finials, the larger channel set with five rows of brilliant cut diamonds, stamped 750

Size/dimensions: 2.1cm wide

Gross weight: 20.3 grams

£700-1,000



157



158



160



159

157

A PAIR OF DIAMOND
CLUSTER EARRINGS

Each designed as a wing shaped
tiered cluster of marquise, brilliant
and baguette cut diamonds,
diamonds approximately 9.0
carats total, post and clip fittings,
unmarked

Size/dimensions: 3.3cm long
Gross weight: 24.0 grams

£4,000-6,000

158

A DIAMOND AND CULTURED
PEARL TORSADE BRACELET
CIRCA 1964

Composed of six rows of cultured
pearls to a single and brilliant
cut diamond set foliate clasp,
mounted in 18ct white gold,
London import mark, indistinct
maker's mark

Size/dimensions: 18.5cm long
Gross weight: 33.2 grams

£500-700

159

KUTCHINSKY, A DIAMOND
CLUSTER RING

Designed as a raised tiered
cluster of marquise and brilliant
cut diamonds, diamonds
approximately 5.00 carats total,
signed Kutchinsky, unmarked

Size/dimensions: ring size M
Gross weight: 15.8 grams

£2,500-3,500

160

A PAIR OF DIAMOND AND
CULTURED PEARL EARRINGS

Each brilliant cut diamond set
bow surmount with a collet
set old European cut diamond
centre, suspending a cultured
pearl drop with diamond set
cap and connector, post fittings,
unmarked

Size/dimensions: 4.4cm long
Gross weight: 20.7 grams

£2,500-3,500



161
ANNABEL JONES, A FRESHWATER CULTURED PEARL AND DIAMOND TORSADE NECKLACE AND BRACELET SET
Each composed of multiple strands of freshwater cultured pearls, to a bi-coloured 18ct gold buckle style clasp pavé set with brilliant cut diamonds, the necklace terminating in a graduated pearl tassel with polished rondelle spacers, maker's mark AJA, UK import mark
Size/dimensions: bracelet 21.0cm, necklace 49.0cm long
Gross weight: 272.5 grams

£2,500-3,500

162
A FIRE OPAL AND DIAMOND DRESS RING
The cushion shaped fire opal collet set between tiered old European cut diamond shoulders, unmarked
Size/dimensions: ring size O
Gross weight: 10.0 grams

£800-1,200



163
A PAIR OF CULTURED PEARL AND DIAMOND EARRINGS
Each of bi-coloured design, the brilliant cut diamond circle with reeded sections, suspending a cultured pearl drop, post and clip fittings, stamped 750
Size/dimensions: 3.7cm long
Gross weight: 18.9 grams

£700-1,000

166
A DIAMOND SET BRACELET
The flattened curb links collet set at intervals with cushion shaped and old European cut diamonds, diamonds approximately 3.0-3.2 carats total, clasp stamped 18k
Size/dimensions: 19.0cm long
Gross weight: 9.9 grams

£2,000-3,000

164
A DIAMOND SET BRACELET
The flattened curb links collet set at intervals with cushion shaped and old European cut diamonds, diamonds approximately 4.80-5.20 carats total, clasp stamped 18k
Size/dimensions: 19.0cm long
Gross weight: 11.1 grams

£3,000-5,000

166A
ELIZABETH GAGE, AN 18 CARAT GOLD 'TAURUS' RING LONDON 1973
The two colour broad band with applied bull masks and beaded detail, upon a textured ground, with ropetwist and polished borders, stamped Gage FR with full hallmark
Size/dimensions: ring size R 1/2
Gross weight: 14.0 grams

£700-1,000

165
A DIAMOND SET BRACELET
The flattened curb links collet set at intervals with cushion shaped and old European cut diamonds, diamonds approximately 5.0-5.40 carats total, clasp stamped 18k
Size/dimensions: 19.0cm long
Gross weight: 11.0 grams

£3,000-5,000





167
A VICTORIAN DIAMOND PENDANT BROOCH
CIRCA 1890 AND LATER
The oval tiered flowerhead cluster set throughout with old European cut diamonds, suspending a similarly set pear shaped drop with later diamond swing centre, to an old European cut connector, detachable from a later two strand cultured pearl necklace with a cultured pearl and seed pearl cluster clasp, clasp stamped 9ct, brooch mounted in silver and gold, composite
Size/dimensions: brooch 7.3cm long, 41.5cm long
Gross weight: brooch 16.7 grams, necklace 44.0 grams

£6,000-8,000

168
A LATE 19TH CENTURY DIAMOND BROOCH
CIRCA 1890
The old cushion shaped diamond cluster in an openwork stylised quatrefoil surround set with old European and cushion shaped diamonds, diamonds approximately 11-12 carats total, later rhodium plated, later brooch fitting
Size/dimensions: 4.5cm long
Gross weight: 24.2 grams

£7,000-10,000



169
A LATE 19TH CENTURY NATURAL PEARL AND DIAMOND NECKLACE
The graduated strand of 5.6-8.1mm natural pearls to an old European cut diamond single stone clasp mounted in silver and gold, unmarked
Size/dimensions: 40.5cm long
Gross weight: 21.9 grams

Offered for sale with a Gemmological Certification Services (GCS) report, no. 5785-2052, dated 11th April 2025, stating:
Variety: Natural Nacreous Pearl
Environment: Saltwater
Comment: No indications of treatment

£3,000-5,000



CARTIER LOTS 170-189



170

170

CARTIER, A DIAMOND AND FRESHWATER CULTURED PEARL 'AGRAFE DOUBLE MOTIF' NECKLACE

Composed of four strands of freshwater cultured pearls with diamond cap terminals and collet set diamond front, suspending a brilliant cut diamond set geometric motif terminating in two slightly offset cultured pearl tassels with diamond set caps and surmounts, to a diamond set clasp, signed Cartier, numbered VH8279, maker's mark, French poinçon, maker's case and card box

Size/dimensions: 40.5cm long

Gross weight: 42.7 grams

£10,000-15,000



171



172

171
CARTIER, AN ENAMEL AND DIAMOND SET 'SIOUX' BROOCH
 CIRCA 1940
 The enameled head with cream and black enameled feather head dress, rose cut diamond accented head band and cabochon turquoise detail, signed Cartier Paris, numbered 9110 1567, French poinçon
 Size/dimensions: 3.2cm long
 Gross weight: 14.0 grams

£2,000-3,000

172
CARTIER, A 9CT GOLD AND DIAMOND SET COMPACT LONDON 1938
 Of rectangular outline with engine turned decoration, the rose gold hinge with collet set transitional cut diamonds and single cut diamond thumbpiece, opening to a two door powder compartment and mirror, signed Cartier London, indistinct number, maker's mark, UK hallmark, associated maker's case
 Size/dimensions: 8.0 x 4.5cm
 Gross weight: 121.5 grams

£2,000-3,000



173



174



175

173
CARTIER, AN ONYX DRESS RING
 The reeded onyx centre between tapered reeded shoulders, signed Cartier, numbered 40252, stamped 18K
 Size/dimensions: ring size L
 Gross weight: 5.8 grams

£300-500

174
CARTIER, A CURB LINK BRACELET
 Of flattened curb linking, signed Cartier, numbered 655360, French poinçon, maker's mark
 Size/dimensions: 18.0cm long
 Gross weight: 16.8 grams

£700-1,000

175
CARTIER, A TRI-COLOURED 14CT GOLD CIGARETTE CASE
 CIRCA 1942
 Of green, yellow and rose gold geometric design with a cabochon sapphire thumbpiece, rubbed signature Cartier, Paris, London, maker's mark, UK import mark, French poinçon
 Size/dimensions: 8.5 x 6.5cm
 Gross weight: 110.2 grams

£2,000-3,000

FROM THE ESTATE OF AN ENGLISH
PRIVATE COLLECTOR | LOTS 176-224



176



177



178

176
CARTIER, A 'PANTHERE' COLLAR
NECKLACE
CIRCA 1990
Of tri-colour twisted torque design,
terminating in opposing panther heads,
signed Cartier, numbered 891144,
maker's mark, stamped 750, maker's
pouch
Size/dimensions: inner diameter 12.7cm
Gross weight: 94.0 grams

£5,000-8,000

177
CARTIER, A 'PHARAON' BANGLE
Of bi-coloured, sprung design, set with
five prowling panthers between reeded
borders, signed Cartier, numbered
615012, French poinçon, maker's mark,
maker's pouch
Size/dimensions: inner diameter 5.3cm
(sprung)
Gross weight: 120.5 grams

£5,000-7,000

178
CARTIER, A 'PHARAON' RING
CIRCA 1990
Of bi-coloured design, set with three
prowling panthers between reeded
borders, signed Cartier, numbered
623054, French poinçon, maker's mark
Size/dimensions: ring size L (sizing band)
Gross weight: 13.9 grams

£1,200-1,500





179



180



181



182



183

179
CARTIER, A RUBY SET 9CT GOLD
COMPACT
LONDON 1948
The oval compact with undulating
reeding and cabochon ruby thumb
piece, signed Cartier London, numbered
116937, maker's mark, UK hallmark, black
slip case
Size/dimensions: 8.1 x 6.2cm
Gross weight: 124.0 grams

£1,500-2,000

180
CARTIER, A RUBY AND DIAMOND
DRESS RING
LONDON 1984
Collet set with a heart-shaped ruby
between brilliant cut diamonds, to a
tapered 18ct gold band, maker's mark,
UK hallmark, number rubbed, in a tooled
red leather Cartier box
Size/dimensions: ring size H
Gross weight: 9.0 grams

£800-1,200

181
CARTIER, A SAPPHIRE AND
DIAMOND DRESS RING
LONDON 1983
Collet set with an oval cabochon
sapphire between pear shaped
diamonds, to a tapered 18ct gold band,
maker's mark, UK hallmark, number
rubbed, in a tooled red leather Cartier
box
Size/dimensions: ring size G
Gross weight: 8.5 grams

£2,000-2,500

182
CARTIER, A DIAMOND SET BROOCH
LONDON 1942
The brilliant cut diamond cluster within a tapered radiating 18ct
gold wire work surround with brilliant cut diamonds in between,
signed Cartier, Made in France, numbered 12618, French
maker's mark and poinçon, UK import mark, associated tooled
red leather Cartier case
Size/dimensions: 4.3cm
Gross weight: 28.0 grams

£4,000-6,000

183
CARTIER, AN AMETHYST BRACELET
Of alternating anchor linking and rectangular scissor cut
amethyst set connectors, later extended by one link, signed
Cartier London, indistinct number, original tooled red leather
Cartier box
Size/dimensions: 21.0cm long
Gross weight: 57.0 grams

£2,000-3,000



184



185



186

184
CARTIER, AN AMETHYST,
TURQUOISE AND DIAMOND SET
BROOCH

Designed as a flower, the old European cut diamond within a cabochon turquoise and oval cut amethyst petal surround with a turquoise bud and beadwork accented leaf, signed Cartier London, numbered 15403, tooled red leather Cartier case
Size/dimensions: 6.6cm long
Gross weight: 22.5 grams

£6,000-8,000

185
CARTIER, A PAIR OF AMETHYST,
TURQUOISE AND DIAMOND SET
EARRINGS

Each designed as a stylised flower, the old European cut diamond within an oval cut amethyst petal surround with a cabochon turquoise set leaf, clip fittings, signed Cartier London, numbered 175622, in a tooled red leather Cartier case
Size/dimensions: 2.7cm long
Gross weight: 9.4 grams

£4,000-6,000

186
CARTIER, AN AMETHYST,
TURQUOISE AND DIAMOND BIRD
BROOCH

Modelled as a Kookaburra perched on a branch, the belly set with an oval cut amethyst, the eye and collar set with cabochon turquoise, with a brilliant cut diamond detail to the branch, twin prong fittings, signed Cartier, numbered H7639, stamped Au750, together with a later freshwater cultured pearl necklace with diamond bead clasp and central brooch fitting
Size/dimensions: 3.7cm long
Gross weight: 24.2 grams

£7,000-10,000





187

187

CARTIER, A SAPPHIRE AND DIAMOND CLUSTER CLIP BROOCH

CIRCA 1935

The shield shaped cluster set with sixteen cushion shaped sapphires with old European cut diamonds in between, twin prong fittings, signed Cartier London, numbered 1289, maker's mark JC, stamped PT950 and Or750, associated tooled red leather Cartier box, together with a later two strand freshwater cultured pearl necklace with central fitting for the clip

Size/dimensions: 5.0cm wide

Gross weight: 50.5 grams

Offered for sale with a Gemmological Certification Services (GCS) report, no. 5785-1650, dated 21st March 2025, stating:

Random test, smallest estimated weight approximately 2.50

carats, largest approximately 13.70 carats

Variety: Natural Sapphire

Origin: Sri Lanka

Comment: No indications of heating

£30,000-50,000





188

188
MONTURE CARTIER, AN AQUAMARINE SINGLE STONE RING
 1960S
 The rectangular step cut aquamarine with canted corners, weighing approximately 59.0 carats, to a polished band, signed MTD Cartier, with an associated Cartier red leather box
 Size/dimensions: ring size P
 Gross weight: 19.2 grams

£6,000-8,000



189

189
CARTIER, A PAIR OF AQUAMARINE AND DIAMOND EARRINGS
 Each designed as a flower, the brilliant cut diamond centre within a circular and oval cut aquamarine petal surround, to a brilliant cut diamond stem, clip fittings, signed Cartier, in a tooled red leather Cartier case
 Size/dimensions: 2.5cm long
 Gross weight: 19.0 grams

£7,000-10,000



190

190
AN AQUAMARINE AND DIAMOND NECKLACE
 The front composed of a series of graduated oval cut aquamarine trefoil clusters with old European or rose cut diamond points, suspending a similarly set fringe, to a later palmier link chain, composite, in an associated fitted Cartier box
 Size/dimensions: 41.5cm long
 Gross weight: 54.9 grams

By repute this necklace was converted by Cartier from an old family tiara

£5,000-7,000



191



193

191
A CULTURED PEARL SINGLE STONE RING
The 17.3mm South Sea cultured pearl, mounted on an 18ct white gold band, UK hallmark
Size/dimensions: ring size O 1/2
Gross weight: 12.0 grams

£300-500



192

192
A CULTURED PEARL AND DIAMOND NECKLACE
The graduate row of 10-13mm cultured pearls, to a bead shaped clasp pavé set with brilliant cut diamonds
Size/dimensions: 44.0cm long
Gross weight: 75.4 grams

£2,000-3,000

193
AN AQUAMARINE AND DIAMOND DRESS RING
The cut cornered rectangular step cut aquamarine, between baguette cut diamond shoulders, aquamarine weighing approximately 29.0 carats, unmarked
Size/dimensions: ring size P
Gross weight: 13.6 grams

£4,000-6,000



194

194
AN AQUAMARINE, DIAMOND AND FRESHWATER CULTURED PEARL NECKLACE
The rectangular step cut aquamarine with canted corners, within a seed pearl and brilliant cut diamond cluster surround, to a later freshwater cultured pearl necklace, aquamarine approximately 54.0 carats, clasp stamped 750
Size/dimensions: 41.0cm long
Gross weight: 121.9 grams

£3,000-5,000



195

195
A CULTURED PEARL TWO STONE RING
Obliquely set with an 18.1 and an 18.6mm South Sea cultured pearls, mounted on an 18ct white gold band, UK hallmark
Size/dimensions: ring size R
Gross weight: 26.3 grams

£400-600



196
A PAIR OF TURQUOISE SET EARRINGS
Each modelled as an openwork 9ct gold shamrock with cabochon turquoise three stone centres, clip fittings, rubbed UK hallmark
Size/dimensions: 2.5cm long
Gross weight: 12.8 grams

£300-500

197
AN 18CT GOLD RUSSIAN WEDDING RING
LONDON 1997-2000
Composed of interlocking white, rose and yellow gold bands, UK hallmarks on each band
Size/dimensions: ring size L
Gross weight: 14.1 grams

£300-500

198
ETERNA Matic, A LADY’S DIAMOND SET ‘SAHIDA’ WRISTWATCH
CIRCA 1964
The circular dial with baton markers in a single cut diamond bezel, to an 18ct gold woven link strap, dial signed Eterna Matic, Sahida, case numbered 5001068, inside case signed Eterna Watch Co., numbered 744 LE 125 N, movement numbered 4773028, Swiss assay marks, UK import marks
Size/dimensions: case 24.0mm wide, watch 15.9cm long
Gross weight: 49.9 grams

£800-1,200

199
BULGARI, A CULTURED PEARL, COLOURED SAPPHIRE AND DIAMOND ‘CONTRAIRE’ RING
Of crossover design, one terminal set with a 9.9mm cultured pearl, the other with a flowerhead composed of five pear shaped vari-coloured sapphire petals with a brilliant cut diamond centre, each 18ct gold shoulder with a graduated row of brilliant cut diamonds, signed Bvlgari, maker’s mark, UK hallmark
Size/dimensions: ring size L
Gross weight: 9.4 grams

£1,800-2,200

200
AN AMETHYST SINGLE STONE RING
The oval cut amethyst in a high four claw mount, amethyst weighing approximately 56.0 carats, unmarked
Size/dimensions: ring size P
Gross weight: 20.0 grams

£1,000-1,500

203
A CITRINE SINGLE STONE RING
The oval cut citrine in a high four claw mount, citrine weighing approximately 43.0 carats, stamped 750, 18K
Size/dimensions: ring size O
Gross weight: 17.5 grams

£500-700

201
A KUNZITE SINGLE STONE RING
The rectangular cut cornered step cut kunzite in a 9ct gold four claw mount, kunzite weighing approximately 32.0 carats, UK hallmark
Size/dimensions: ring size O
Gross weight: 11.2 grams

£700-1,000

204
A CITRINE SINGLE STONE PENDANT
The cut cornered rectangular step cut citrine in a four claw mount, citrine weighing approximately 45.0 carats, stamped 14K 585
Size/dimensions: 3.3cm long including bale
Gross weight: 18.5 grams

£300-400

202
A FRENCH FANCY-LINK BRACELET
Of stylised anchor link design, with domed connectors, numbered 9477, French poinçon
Size/dimensions: 18.0cm long
Gross weight: 73.3 grams

£2,000-4,000



205

205
A GEM SET DRESS RING
Modelled as a leopard with diamond eyes and ruby and sapphire spots, stamped 18K
Size/dimensions: ring size N
Gross weight: 7.6 grams

£500-700



206

206
A DIAMOND SET FANCY LINK BRACELET
CIRCA 1964
Composed of reeded 18ct gold foliate links, the central row accented with single cut diamonds, between palmier and bead design borders, UK import mark, maker's mark ULtd and UILD
Size/dimensions: 2.5cm long
Gross weight: 19.0 grams

£2,000-3,000



207

207
POMELLATO, A LAPIS LAZULI FANCY LINK BRACELET
1970S
The bombé bracelet composed of textured openwork scroll links with graduated cabochon lapis lazuli sections between, maker's mark, stamped 750, Italian control mark
Size/dimensions: 19.7cm long
Gross weight: 84.3 grams

£2,000-3,000



208

208
A STAR RUBY SINGLE STONE RING
The oval cabochon star ruby in a tapered rubover mount, ruby weighing approximately 14.0 carats, stamped 18ct
Size/dimensions: ring size L
Gross weight: 21.8 grams

£1,200-1,800





209



210



211



212



213

209

A PINK TOURMALINE AND DIAMOND DRESS RING

The oval cut pink tourmaline between baguette cut diamond shoulders, pink tourmaline weighing approximately 13.0 carats, unmarked

Size/dimensions: ring size K 1/2

Gross weight: 9.1 grams

£2,500-3,000

210

A PINK TOURMALINE AND DIAMOND DRESS RING

The cut cornered rectangular step cut pink tourmaline, between triangular cut diamond shoulders, pink tourmaline weighing approximately 16.0 carats, unmarked

Size/dimensions: ring size L/M (sizing beads)

Gross weight: 10.6 grams

£1,800-2,200

211

A KUNZITE SINGLE STONE RING

The oval cut kunzite in a four claw mount, kunzite weighing approximately 47.6 carats, unmarked

Size/dimensions: ring size Q

Gross weight: 16.0 grams

Purchased from Cartier London, June 1971, accompanied by a copy of the Cartier receipt

£1,500-2,000

212

A KUNZITE AND FRESHWATER CULTURED PEARL NECKLACE

The square scissor cut kunzite, suspended from a freshwater cultured pearl necklace with a magnetic bead clasp, kunzite weighing approximately 64.0 carats,

Size/dimensions: 43.0cm long

Gross weight: 96.7 grams

£500-700

213

A KUNZITE SINGLE STONE RING

The cushion shaped fancy cut kunzite in an eight claw setting, to an 18ct white gold band, kunzite weighing approximately 29.0 carats, UK hallmark

Size/dimensions: ring size L

Gross weight: 13.2 grams

£1,500-2,000



214

214
A SAPPHIRE AND DIAMOND DRESS RING
The oval cut sapphire in a four claw mount with brilliant cut diamond set prongs, between bifurcated diamond set 18ct white gold shoulders, sapphire weighing approximately 16.90 carats, UK hallmark
Size/dimensions: ring size P
Gross weight: 15.8 grams

Offered for sale with a Gemmological Certification Services (GCS) report, no. 5785-1651, dated 21st March 2025, stating:
Variety: Natural Sapphire
Origin: Sri Lanka
Comment: No indications of heating

£5,000-8,000



215

215
A SAPPHIRE AND DIAMOND DRESS RING
The oval cabochon sapphire, mounted on a baguette cut diamond band, to a polished 18ct white gold shank, sapphire weighing approximately 31.0 carats, UK hallmark
Size/dimensions: ring size P
Gross weight: 14.5 grams

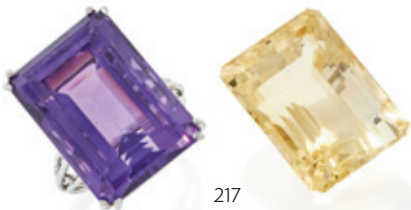
£2,000-3,000



216

216
A TAHITIAN CULTURED PEARL AND DIAMOND NECKLACE
The graduated row of 11.8-14.2mm Tahitian cultured pearls to a bead shaped clasp pavé set with brilliant cut diamonds
Size/dimensions: 47.5cm long
Gross weight: 107.6 grams

£1,500-2,000



217

217
AN AMETHYST SINGLE STONE RING AND AN UNMOUNTED CITRINE
The cut cornered rectangular step cut amethyst in a four double claw mount, to a wirework shank, amethyst weighing approximately 16.90 carats, unmarked; together with a similarly cut citrine, weighing approximately 42.0 carats
Size/dimensions: ring size N/O
Gross weight: 23.2 grams

£800-1,200



218

218

A TOPAZ AND DIAMOND BRACELET

LATE 19TH CENTURY AND LATER

Composed of two graduated rows of oval cut topaz, later joined and connected to an old European cut diamond set openwork clasp, composite

Size/dimensions: 17.0cm long

Gross weight: 27.9 grams

£5,000-8,000



219

219

A TWO STRAND CULTURED PEARL NECKLACE

Composed of two graduated strands of 5.0-9.5mm cultured pearls to a pierced oval clasp, set with an oval cut garnet within a single cut diamond surround, unmarked

Size/dimensions: 42.0cm long

Gross weight: 46.5 grams

£400-600



220

220

A PAIR OF MABÉ PEARL AND DIAMOND EARRINGS

Each mabé pearl within an old single cut diamond surround, post fittings

Size/dimensions: 1.5cm long

Gross weight: 9.7 grams

£400-600



221

221

A CHARM BRACELET

The circular link bracelet suspending twenty-nine charms, including a poodle, a ballerina, an enamelled maple leaf, a dog house, an ice cream cart, various animals, and an Eiffel tower, bracelet stamped 9ct, majority of charms with UK hallmarks for 9ct gold, the rest variously marked or unmarked

Size/dimensions: 19.8cm long

Gross weight: 84.3 grams

£1,000-1,500

VAN CLEEF & ARPELS

LOTS 222-226



222



223

222 VAN CLEEF & ARPELS, A GEM SET CHARM PENDANT CIRCA 1950S

Designed as a disc pendant with ropetwist border, with a bouquet of cabochon turquoise, circular cut sapphire and brilliant cut diamond flowers, signed VCA, partial number 47, French poinçon, maker's mark for Georges Lenfant
Size/dimensions: 4.0cm long
Gross weight: 10.0 grams

Literature
Evelyne Possémé, Van Cleef & Arpels. The Art of High Jewelry, Paris, 2012, pg. 179 for an illustration of a similar charm bracelet dated circa 1955-1960.

£2,500-3,500

223 VAN CLEEF & ARPELS, A GEM SET CHARM BRACELET CIRCA 1950S

The bracelet composed of reeded circlet links with polished X-shaped connectors, suspending seven disc pendants with ropetwist borders, five modelled as gem-set lovebirds in front of a sunrise, one as gem set birds on a bench, and the central one as a sprig of ruby and emerald set ivy, bracelet signed VCA, numbered 77110, French poinçon, maker's mark for Georges Lenfant, the pendants all signed and numbered
Size/dimensions: 19.5cm long
Gross weight: 106.6 grams

£10,000-15,000





224

224
VAN CLEEF & ARPELS, A GEM SET CHARM BRACELET
CIRCA 1960S

The bracelet composed of square ropetwist figure-of-eight links with polished connectors, suspending eight bell pendants, modelled as a diamond set snowman, a gem set Father Christmas, a ruby and diamond Queen of Hearts, a ruby and diamond cockerel, a ruby set Knight of Hearts, a ruby and diamond set King of Hearts, a ruby set chorister and a diamond set angel, bracelet signed Van Cleef & Arpels, numbered 83891, French poinçon, the bells variously marked VCA, signed or numbered, angel and cockerel with UK import mark for 18ct gold, sponsor's mark for Asprey & Co., 1961 and 1963

Size/dimensions: 19.5cm long

Gross weight: 208.1 grams

£5,000-7,000

OTHER PROPERTIES

225
VAN CLEEF & ARPEL, A SAPPHIRE AND
DIAMOND BROOCH AND EARRINGS
CIRCA 1950S

Each of stylised foliated design, the reeded leaves accented with circular cut sapphires and brilliant cut diamonds, brooch with twin prong fitting, earrings with clip fittings, signed VCA, brooch numbered 1V105-1, earrings numbered 3V36-4, maker's mark for André Vassort, French poinçon

Size/dimensions: brooch 5.3cm, earrings 2.5cm long

Gross weight: 28.0 grams

£6,000-8,000



225





226

226
VAN CLEEF & ARPELS, A SAPPHIRE, YELLOW SAPPHIRE
AND DIAMOND 'PASSE PARTOUT' BROOCH AND
EARRINGS
 CIRCA 1938

Each designed as a flower head with cushion shaped yellow sapphire petals and circular cut sapphire cluster centre to polished gold leaves, the brooch with further sapphire accents and diamond set leaves, brooch with twin prong and clasp fittings, earrings with clip fittings, each signed Van Cleef & Arpels, brooch numbered 51002, earrings numbered 50720, French poinçon, maker's mark
 Size/dimensions: brooch 4.5cm wide, earrings 2.9cm long
 Gross weight: 48.7 grams

Provenance:
 From the estate of Mrs Anne Fleming
 Thence by descent

Purchased at Van Cleef & Arpels, Paris in 1938 by Lord O'Neill of Shanes Castle for his wife Anne. Since the summer of 1936 Anne had been having an affair with Esmond Harmsworth, not yet Lord Rothermere, who would become her second husband, and later with Ian Fleming, who would become her third husband.

When Anne heard that her first husband was going to go to Paris for a weekend with Maureen Dufferin and Ava, the Guinness heiress and a neighbour in Northern Ireland, she insisted on coming along too. When her husband complained that that would make them uneven numbers, she decided to bring her lover Esmond Harmworth along.

To give this odd party some respectability, Nancy and John Hare (later Lord Blakenham) were invited. Nancy wrote a poem about it called *A Weekend in Paris*. Over the course of this weekend something happened: Anne decided, as Nancy put it, 'to vamp her husband.' There was a rapprochement and this short-lived reconciliation was celebrated by the gift of these jewels by Van Cleef & Arpels from Lord O'Neill to his wife Anne. The lover and the mistress were then, as expressed in Nancy's poem, 'put upon *their* mettle,' which resulted in Esmond presenting Maureen with diamond clips from Cartier in Paris, and in the final happening, Esmond was induced to present Anne with diamond clips from Cartier in London.



In Nancy's poem Anne is lightly disguised as Jane. The final couplet goes: 'Dear Jane, I think gets all the Laurels, Altho' I can't applaud her morals.'

£15,000-20,000



THE ATTIC SALE

POWDERHAM CASTLE & BROCKLESBY PARK

AUCTION | NEWBURY | 3 JUNE

Enquiries: housesales@dreweatts.com 01635 553 553

[dreweatts.com](https://www.dreweatts.com)
NEWBURY | LONDON



DREWEATTS
EST. 1759

TALES FROM THE ART CRYPT

WORKS FROM THE RICHARD FEIGEN COLLECTION

AUCTION | NEWBURY | 2 JULY

Enquiries: pictures@dreweatts.com 01635 553 553

[dreweatts.com](https://www.dreweatts.com)
NEWBURY | LONDON



DREWEATTS
EST. 1759

FINE WATCHES, PENS & LUXURY ACCESSORIES



BVLGARI, SERPENTI FOREVER PINK
CALF LEATHER SHOULDER BAG

Est. £800-1,200 (+ fees)

INVITING ENTRIES

AUCTION DATE: 20 NOVEMBER | ENTRIES CLOSE: 25 SEPTEMBER

For a free auction valuation: jsw@drewatts.com 01635 553 553

drewatts.com
NEWBURY | LONDON



DREWEATTS
EST. 1759

COMING UP AT DREWEATTS & FORUM AUCTIONS

21 May | Forum Auctions

Modern & Contemporary Prints and Multiples

21 & 22 May | Drewatts

Chinese Ceramics and Works of Art

28 May | Drewatts

Fine Wine, Champagne, Vintage Port and Spirits

29 May | Drewatts

Art & Interiors

29 May | Forum Auctions

Fine Books, Manuscripts and Works on Paper

3 June | Drewatts

The Attic Sale: Powderham Castle & Brocklesby Park

4 June | Forum Auctions

Modern British Prints

4 June | Forum Auctions

Salvador Dalí and Paul Delvaux: European Masters of Surrealism

11 June | Drewatts

Old Master, British and European Art

12 June | Drewatts

Fine Jewellery

19 June | Drewatts

Art & Interiors

19 June | Forum Auctions

A Sixth Selection of 16th and 17th Century English Books from the Fox Pointe Manor Library

24 June | Drewatts

Fine Wine, Champagne, Vintage Port and Spirits

24 & 25 June | Drewatts

Fine Furniture, Sculpture, Carpets, Ceramics and Works of Art

2 & 3 July | Forum Auctions

Prints & Multiples 1500-2025

2 July | Drewatts

Tales from the Art Crypt:

Works from The Richard Feigen Collection



NOW INVITING ENTRIES

If you have an item you would like valued for sale at auction, we would be delighted to provide you with a free, no obligation estimate. Contact us to arrange an in-person appointment or visit our website to see how to submit the information online.

drewatts.com

info@drewatts.com

NEWBURY

01635 553 553

LONDON

020 7839 8880

forumauctions.co.uk

info@forumauctions.co.uk

LONDON

020 7871 2640

DREWEATTS
EST. 1759

Forum
Auctions

IMPORTANT NOTICES TO WATCH BUYERS

DAMAGE, RESTORATION, ALTERATION

Although every effort is made to note any damage, restoration or alterations, the absence of any such information in catalogue descriptions does not imply the lot is in perfect condition and free from any such defects. Prospective buyers should satisfy themselves as to the condition of any lot prior to bidding. All watches are serviced from time to time, and Dreweatts are unable to guarantee that the working parts of any watch movement, glass or crystal, winding crowns, watch bracelet, strap or buckle are the manufacturers’ original parts, unless otherwise stated in the catalogue description. We are unable to make any representation in our catalogue descriptions or condition reports as to the authenticity of such parts. Dreweatts are unable to make any representation, nor make any comment on, the authenticity of diamonds, or other gemstones, set into watch dials, bezels, cases and bracelets.

AUTHENTICATION

All watch movements have been inspected by Dreweatts watchmaker and specialists, and we have verified all inventory and movement numbers. For the information of potential bidders, all inventory and movement numbers are listed in the catalogue description for the relevant lot.

IMPORTANT NOTICES TO JEWELLERY BUYERS

DAMAGE, RESTORATION, ALTERATION

Although every effort is made to note any damage, restoration or alterations, the absence of any such information in catalogue descriptions does not imply the lot is in perfect condition and free for any such defects. Prospective buyers should satisfy themselves as to the condition of any lot prior to bidding.

ENHANCEMENT

Prospective bidders should be aware that many coloured gems have been historically treated by a variety of methods to improve their appearance, both in terms of colour and transparency. Rubies and sapphires are routinely heat treated, emeralds are enhanced through the use of coloured and transparent oils and resins, and jadeite is routinely stained. These treatments, and others including irradiation and coating, are generally accepted by the jewellery trade as standard practice. Although most treatments are considered to be permanent, those gemstones which have been oiled may need to be re-treated to maintain their appearance. Any such treatments affect the market value of coloured gemstones, and Dreweatts pre-sale estimates published in the catalogue assume that all gemstones, unless otherwise stated in the catalogue, may have been enhanced. Dreweatts may obtain Gemmological Reports from a recognised laboratory where appropriate detailing any enhancements, or lack of, for certain gemstones, and such reports may be obtained for prospective bidders prior to the sale, provided such requests are made at least three weeks before the sale, and that the requesting party has pre-paid for such a report. However it is not possible for Dreweatts to obtain reports for every stone offered in the sale. In the absence of a gemmological laboratory report, it is not possible for Dreweatts to make any comment on the possibility that any gemstone in any lot may have been subject to enhancement. Dreweatts catalogue descriptions and condition reports adhere to the guidelines laid out in the ‘Blue Book’ of CIBJO, the International Jewellery Confederation.

IMPORT/EXPORT RESTRICTIONS

There may be Import Restrictions into some territories outside the United Kingdom placed on certain watch brands, or on the importation of watches with straps composed of animal skins which may fall under CITES Regulations. It is the sole responsibility of the buyer to comply with all Export/Import regulations and potential bidders are strongly recommended to check with their shipping agent as to any such regulations that may apply to any lot. Dreweatts are not shippers and are unable to offer any advice regarding such regulations.

CONDITION REPORTS

Dreweatts condition reports will identify whether a watch functions at the time of cataloguing, and suggest possible, but not comprehensive, restoration work that may need to be carried out for the watch to function properly. Dreweatts are unable to test watches for accuracy or running to time, and we cannot guarantee that any watch will function when purchased from us. As we have examined all watch movements by removing the case backs, we cannot guarantee that water resistant watches will remain water resistant following purchase from us. Dreweatts recommend that any watch purchased from us is subsequently overhauled by a competent watchmaker to ensure proper functioning.

WEIGHTS

All gram weights have been obtained using an electronic balance, but weights stated in the catalogue are approximate and for guidance only, and potential bidders should satisfy themselves as to their accuracy. ‘...approximately 1.20 carats total,...’ all such stone weights are estimated using standard equipment and formulae, and are subject to the limitations imposed by the mount. ‘...weighing 1.20 carats,...’ where the description reads as such, the stones in question have been removed from the mount and weighted using an electronic balance.

SIGNATURES

‘...by Lacloche,...’ in our opinion is a piece made by or for the jeweller, bearing relevant signatures, maker’s marks, and where appropriate, the maker’s inventory number/s. ‘...signed Lacloche,...’ in our opinion is a piece retained by the jeweller, but not necessarily made by them. This may also mean that the piece has been mounted by the jeweller using stones supplied by the client; a special commission from a client’s design; or has been altered or later added to.

COLOURED STONES OF BURMA (MYANMAR) ORIGIN

Buyers should be aware that certain territories (notably the United States of America) have import restrictions on certain coloured gemstones. All gemstones that maybe of Burma (Myanmar) origin, notably rubies and jadeite, may require a certificate of origin before they can be imported. Prospective bidders for such gemstones should check with their shipper, and relevant Government authorities regarding any necessary certification prior to bidding. Whilst Dreweatts are able to suggest a number of Gemmological Laboratories for such certification, we are unable to carry out any such certification for potential bidders or buyers.

Please see Conditions of Business and Conditions of Sale on the following pages.

Dreweatts & Dreweatts 1759 are trading names of Dreweatts 1759 Ltd. Dreweatts 1759 Ltd is registered in England, company number: 10758982, registered office: C/O Bishop Fleming LLP, 10 Temple Back, Bristol, BS1 6FL.

IMPORTANT NOTICES

BUYING AT DREWEATTS

There are several ways you can bid at a Dreweatts auction; in person, by leaving a commission or absentee bid, on the telephone where available and live via the internet – please make arrangements before the sale. THIS NOTICE APPLIES ONLY TO A PERSON WHO WISHES TO BID IN PERSON, OR BY LEAVING A COMMISSION OR ABSENTEE BID, AT A DREWEATTS PUBLIC AUCTION. For bidding at an online auction or for online bidding at a public auction please see our Online Auction Terms published on our website at www.dreweatts.com.

BIDDING IN PERSON

If intending to buy you are required to register your name and details at reception prior to the commencement of the auction. You will be required to provide a proof of identity and address to register for bidding. You will then be allocated a bidding number, which you use when bidding for an item.

COMMISSION BIDS

Dreweatts will execute bids on your behalf if you are unable to attend the sale. Commission or absentee bids are accepted either directly at reception, or can be sent by post, fax, email, telephone or via the website: www.dreweatts.com.

Dreweatts will add these bids to the auctioneers’ sale book and will undertake to purchase the lots on your behalf as cheaply as allowed by other bids and reserves. If two buyers submit identical commission bids Dreweatts may prefer the first bid received.

Dreweatts does not accept liability for failing to execute commission bids, or for any errors or omissions.

CONDITION

Bidders must satisfy themselves as to the condition of each lot. Condition reports are available on request – see the Conditions of Business at the back of this catalogue forming part of these Auction Terms and Conditions for more information regarding condition reports. Requests for condition reports must be submitted by 4pm on the day prior to the auction; condition reports may be available alongside the lot description on the online catalogue at: www.dreweatts.com.

COMMISSION CHARGES

All purchases are subject to a buyer’s premium, which is charged per lot at 26% of the hammer price (31.2% including VAT) up to and including £20,000, 25% (30% including VAT) of the hammer price from £20,001 up to and including £500,000, 20% (24% including VAT) of the hammer price from £500,001 up to and including £1,000,000 and 12.5% of the hammer price (15% including VAT) in excess of £1,000,000. A theta symbol (θ) indicates that the lot is a zero rated item and therefore not subject to VAT on the buyer’s premium. This applies to bound books (manuscripts and printed), unframed maps and albums. In the event the lot has a dagger (†) beside the lot number in the catalogue, this indicates that the lot is owned by an entity or company required to pay VAT (generally not an Antique Dealer, as they operate under a dealers margin scheme). VAT is payable at 20% on the Hammer Price. Lots marked with a double dagger (‡) (presently a reduced rate of 5%) or Ω (presently at standard rate of 20%) have been imported from outside the UK under Temporary Admission regime and therefore the buyer must pay the import VAT at the appropriate rate on the duty inclusive hammer price.

PAYMENT

Payment will be accepted, if you are a successful bidder, by debit card

issued in the name of the Buyer by a UK bank and registered to a UK billing address; by all major UK issued credit cards issued in the name of the Buyer and registered to a UK billing address with the exception of Diners Club; by bank transfer direct into our bank account, Bank Details: NatWest, 30 Market Place, Newbury, Berkshire RG14 5AG. Account Name: Dreweatts 1759 Ltd. A/C: 62412949, Sort Code: 60-15-07, BIC: NWBKGB2L, IBAN: GB21NWBK60150762412949. The name of the bank account holder should match the name of the buyer. First time buyers who are not present at the saleroom are requested to pay by bank transfer.

Y CITES REGULATIONS

Please note that lots marked with the symbol (Y) in this catalogue may be subject to CITES Regulations when exported. Relevant CITES Regulations may be found at www.gov.uk/guidance/cites-imports-and-exports.

COLLECTION OR DELIVERY

Before being able to collect your purchases you are required to pay the hammer price, plus the applicable commissions, and obtain a receipt acknowledging payment. Collection of the purchased lots is at the purchaser’s risk and expense and whilst Dreweatts do not provide packing and despatch service we can suggest some carriers.

Dreweatts also require that all purchased items are collected within four working days of the sale to avoid a storage charge being applied.

STORAGE CHARGES

All items not collected by 4pm, within four working days of the sale, will be automatically removed to commercial storage and subject to a minimum storage charge of £20 (plus VAT) per lot and to a further storage charge of £3 (plus VAT) per lot per part or full day thereafter. These charges will be the sole liability of the purchaser and will be billed directly to them by Sackville-West Moving & Storing; Sackville-West Moving & Storing may be willing to adjust their charges if they are instructed by the purchaser to deliver to them. On payment of all sales and storage costs, items will be available for collection by appointment from Sackville-West Moving & Storing (Andover), tel: + 44 (0) 2080 909988, email: office@sackvillewest.co.uk. These charges are set by Sackville-West Moving & Storing; we recommend that you contact them directly regarding queries relating to these charges and other questions relating to storage. Staff at the saleroom will be unable to answer questions relating to items that have been removed from the saleroom.

FURTHER INFORMATION

The colours printed in this catalogue are not necessarily a true reflection of the actual item. All weights and measures given in the catalogue should be regarded as approximate.

VALUATION SERVICES

Dreweatts provides a range of confidential and professional valuation services to private clients, solicitors, executors, estate managers, trustees and other professional partners. These services include auction valuations, insurance valuations, probate valuations, private treaty valuations, valuations for family division or for tax purposes. For more information, please see our website: www.dreweatts.com.

For directions to Donnington Priory, please see our website: www.dreweatts.com.

Parking is available at Donnington Priory in two car parks on either side of the saleroom.

INFORMATION FOR BUYERS AT PUBLIC AUCTIONS

1. **INTRODUCTION.** The following notes are intended to assist Bidders and Buyers, particularly those inexperienced or new to our salerooms. All of our auctions and sales are conducted on our printed Auction Terms and Conditions, including these Conditions of Sale and Business, which are readily available for inspection and normally accompany catalogues. Our staff will be happy to help you if there is anything you do not fully understand.

Any particular auction and/or any particular lot in an auction may be subject to different or additional terms which will be published in our auction catalogue. All auctions and sales of wines and spirits, jewellery, watches and clocks are subject to the special terms set out in the relevant Notices in relation to those items published in our auction catalogue and, in the event of any conflict or inconsistency, those special terms prevail over any other terms in our Auction Terms and Conditions. By bidding at the auction, you agree to be bound by these terms.

2. **AGENCY.** As auctioneers we usually act as agents for the seller whose identity, for reasons of confidentiality, is not normally disclosed. Accordingly if you buy at auction your contract for the item or items purchased is with the seller and not with us as the auctioneer.

3. **ESTIMATES.** Estimates are designed to help buyers gauge what sort of sum might be involved for the purchase of a particular lot. Estimates may change and should not be thought of as the sale price. The lower estimate may represent the reserve price and certainly will not be below it. Estimates do not include the Buyer's Premium or VAT (where chargeable). Estimates are prepared some time before the sale and may be altered by announcement before the sale. They are in no sense definitive.

4. **BUYER'S PREMIUM.** The Conditions of Sale forming part of our Auction Terms and Conditions require the buyer to pay a buyer's premium on the hammer price of each lot purchased. The buyer's premium is 26% of the hammer price up to and including £20,000, 25% of the hammer price from £20,001 up to and including £500,000, 20% of the hammer price from £500,001 up to and including £1,000,000, and 12.5% of the hammer price in excess of £1,000,000. VAT at the prevailing rate of 20% is added to buyer's premium and additional charges as defined below.

5. **VAT.** A theta symbol (θ) indicates that the lot is a zero rated item and therefore not subject to VAT on the buyer's premium. This applies to bound books (manuscripts and printed), unframed maps and albums. A dagger symbol (†) indicates that VAT is payable by the purchaser at the standard rate (presently 20%) on the hammer price as well as being an element in the buyer's premium. This imposition of VAT is likely to be because the seller is registered for VAT within the United Kingdom and is not operating the Dealers Margin Scheme. A double dagger (§) indicates that the lot is being sold whilst subject to temporary importation and that import VAT at the reduced rate (currently 5%) calculated on the hammer price is due. (Ω) Indicates that the lot has been imported from outside the UK and that import VAT at the standard rate (currently 20%) calculated on the hammer price (inclusive of any applicable duty) is due. Lots offered subject to temporary importation (§ or Ω) require relevant customs procedure to be completed prior to the property leaving Dreweatts' premises or being exported. Dreweatts will issue the instruction to a customs broker or shipper upon receipt of full payment for the lots. The import VAT charged for lots with symbols ‡ or Ω can be refunded if Dreweatts is instructed to re-export the property or if the VAT liability is transferred to another Temporary Admission authorisation. Lots which appear without the above symbols indicate that no VAT is payable on the hammer price; this is because such lots are sold using the Auctioneers Margin Scheme and it should be noted that the VAT included within the buyer's premium is not recoverable as input tax.

6. **DESCRIPTION AND CONDITION.** Condition reports are provided on our website or upon request. The absence of a report does not imply that a lot is without imperfections. The detail in a report will reflect the estimated value of the lot. Large numbers of such requests received shortly before the sale may mean that reports cannot be provided for all lots. Members of staff are not trained restorers or conservators and, particularly for higher value lots, you should obtain an opinion from such a professional. Dreweatts is not liable for damage to gilded picture frames, plaster picture frames or picture frame glass; if a Lot is or becomes dangerous, we may dispose of it without notice to bidders in advance in any manner we see fit and will be under no liability for doing so. We recommend that you always view a lot in person.

We are dependent on information provided by the seller about a lot and whilst we may inspect lots and act reasonably in taking a general view about them we are normally unable to carry out a detailed examination and frequently no examination of lots in order to ascertain their condition in the way in which it would be wise for a buyer to do. Intending buyers have ample opportunity for inspection of goods and, therefore, accept responsibility for inspecting and investigating lots in which they may be interested and the corresponding risk should they not do so. Please note carefully the exclusion of liability for the condition of lots contained

in the Conditions of Sale. Neither the seller nor we, as the auctioneers, accept any responsibility for their condition. In particular, mechanical objects of any age are not guaranteed to be in working order. However, in so far as we have examined the goods and make a representation about their condition in the auction catalogue, we shall be liable for any defect which is not reflected in that representation and which that examination ought to have revealed to the auctioneer but which would not have been revealed to the buyer had the buyer examined the goods. Additionally, in specified circumstances lots misdescribed because they are 'deliberate forgeries' may be returned and repayment made. There is a 3 week time limit. (The expression 'deliberate forgery' is defined in our Conditions of Sale).

7. **ELECTRICAL GOODS.** These are sold as 'antiques' only and if bought for use must be checked over for compliance with safety regulations by a qualified electrician before use.

8. **EXPORT OF GOODS.** Buyers intending to export goods should ascertain (a) whether an export licence is required and (b) whether there is any specific prohibition on importing goods of that character because, e.g. they may contain prohibited materials such as ivory. Ask us if you need help.

Private overseas buyers can only receive goods free of VAT or have the VAT amount refunded if Dreweatts acts as exporter in relation to the sale, the goods are exported within 3 months of the sale and Dreweatts is in possession of adequate export documents. The VAT refunds are available for transactions exceeding £2,500. If you arrange for the goods to be picked up/delivered to you directly we will charge UK VAT at the appropriate rate and no refund will be available. Please note, buyers are responsible for completing the importation procedures as well as the payment of any relevant duty/VAT payable on importation into the destination country.

Where the purchase has been made in the business or trading name, VAT refund will be available on proof of export provided within 3 months of the sale.

9. **BIDDING.** Bidders will be required to register before the sale commences and lots will be invoiced to the name and address on the sale registration form. Bidders are required to provide a government issued identity document and a proof of address. Please enquire in advance about our arrangements for telephone bidding.

10. **COMMISSION BIDDING.** Commission bids may be left with the auctioneers indicating the maximum amount to be bid excluding buyer's premium. Dreweatts will add these bids to the auctioneers' sale book and they will be executed as cheaply as possible having regard to the reserve (if any) and competing bids. If two buyers submit identical commission bids the auctioneers may prefer the first bid received. Please enquire in advance about our arrangements for the leaving of commission bids by telephone or fax. Dreweatts does not accept liability for failing to execute commission bids, or for any errors or omissions.

11. **METHODS OF PAYMENT.** Payment will be accepted, if you are a successful bidder, by debit card issued in the name of the Buyer by a UK bank and registered to a UK billing address; by all major UK issued credit cards issued in the name of the Buyer and registered to a UK billing address with the exception of Diners Club; by bank transfer direct into our bank account, Bank Details: NatWest, 30 Market Place, Newbury, Berkshire RG14 5AG. Account Name: Dreweatts 1759 Ltd. A/C: 62412949, Sort Code: 60-15-07, BIC: NWBKGB2L, IBAN: GB21NWBK60150762412949. The name of the bank account holder should match the name of the buyer. First time buyers who are not present at the saleroom are requested to pay by bank transfer.

12. **COLLECTION AND STORAGE.** Please note what the Conditions of Sale state about collection and storage. It is important that goods are paid for and collected promptly. Any delay may involve the buyer in paying storage charges.

13. **λ ARTIST'S RESALE RIGHT (DROIT DE SUITE) ROYALTY CHARGES.** Under Artist's Resale Right (ARR) UK art market professionals (including, but not limited to, auctioneers, art dealers and galleries) are required to collect a royalty for works of art produced by qualifying artists each time a work is resold during the artist's lifetime and for a period up to 70 years following the artist's death. This payment is only applicable to qualifying works of art when the hammer price reaches or exceeds £1,000. The charge is calculated on the portions of the hammer price according to the following rate bands:

Royalty Rate	Portion of the hammer
4%	up to £50,000
3%	between £50,000.01 and £200,000
1%	between £200,000.01 and £350,000
0.5%	between £350,000.01 and £500,000
0.25%	in excess of £500,000

The royalty charge is capped at £12,500 per artwork. All royalty charges are passed on, no handling costs or additional fees with respect to these charges will be retained by Dreweatts. The ARR charge is VAT exempt. All items in this catalogue that are marked with λ are potentially qualifying items. The charge will be added to the buyer's invoice and must be paid before items can be released to the buyer.

TERMS OF CONSIGNMENT FOR SELLERS IN PUBLIC AUCTIONS

The sale of goods at our public auctions and a seller's relationship with us are governed by our Auction Terms and Conditions including these Terms of Consignment for Sellers in Public Auctions and our Conditions of Sale for Public Auctions. Any particular auction and/or any particular lot in an auction may be subject to different or additional terms which will be published in our auction catalogue or separately announced prior to the auction. All auctions and sales of wines and spirits, jewellery, watches and clocks are subject to the special terms set out in the relevant Notices in relation to those items published in our auction catalogue and, in the event of any conflict or inconsistency, those special terms prevail over any other terms in our Auction Terms and Conditions. Please note that our Auction Terms and Conditions including these Terms of Consignment for Sellers in Public Auctions and our Conditions of Sale for Public Auctions relate to auctions held in our salerooms and we have separate terms and conditions for our online auctions.

If you, or another person acting on your behalf, provide goods to us to sell on your behalf at one of our auctions this signifies that you agree to and will comply with our Auction Terms and Conditions including these Terms of Consignment for Sellers in Public Auctions and our Conditions of Sale for Public Auctions.

1. **INTERPRETATION.** In these Terms the words 'you', 'yours', etc. refer to the Seller and if the consignment of goods to us is made by an agent or otherwise on the Seller's behalf we assume that the Seller has authorised the consignment and that the consignor has the Seller's authority to contract. All obligations that apply to the Seller under these Terms of Consignment for Sellers in Public Auctions shall apply to the owner of the goods and their agent jointly and separately. Similarly the words 'we', 'us', etc. refer to the Auctioneers.

2. **WARRANTY.** The Seller warrants that possession in the lots can be transferred to the Buyer with good and marketable title, free from any third party right and encumbrances, claims or potential claims. The Seller has provided all information concerning the item's ownership, condition and provenance, attribution, authenticity, import or export history and of any concerns expressed by third parties concerning the same.

3. **ALL COMMISSIONS.** and fees are subject to VAT at the prevailing rate.

4. **COMMISSION.** is charged to sellers and all selling terms are available from our salerooms.

5. **REMOVAL COSTS.** Items for sale must be consigned to the saleroom by any stated deadline and at your expense. We may be able to assist you with this process but any liability incurred to a carrier for haulage charges is solely your responsibility.

6. LOSS AND DAMAGE OF GOODS

(a) Loss and Damage Warranty - Dreweatts is not authorised by the FCA to provide insurance to its clients, and does not do so. However Dreweatts for its own protection assumes liability for property consigned to it at the lower pre-sale estimate until the hammer falls. To justify accepting liability, Dreweatts makes a charge of 1.5% of the hammer price plus VAT, subject to a minimum charge of £1.50, or if unsold 1.5% of our lower estimate. The liability assumed by Dreweatts shall be limited to the lower pre-sale estimate or the hammer price if the lot is sold. Dreweatts is not liable for damage to gilded picture frames, plaster picture frames or picture frame glass; if the Lot is or becomes dangerous, we may dispose of it without notice to you in advance in any manner we see fit and will be under no liability for doing so.

(b) If the owner of the goods consigned instructs us in writing not to take such action, the goods then remain entirely at the owner's risk unless and until the property in them passes to the Buyer or they are collected by or on behalf of the owner, and clause 6 (a) is inapplicable.

7. **ILLUSTRATIONS AND PHOTOGRAPHS.** The cost of any illustrations or photographs is borne by you. The copyright in respect of such illustrations and photographs shall be the property of us, the auctioneers, as is the text of the catalogue.

8. **MINIMUM BIDS AND OUR DISCRETION.** Goods will normally be offered subject to a reserve agreed between us before the sale in accordance with clause 9. We may sell Lots below the reserve provided we account to you for the same sale proceeds as you would have received had the reserve been the hammer price. If you specifically give us a "discretion" we may accept a bid of up to 10% below the formal reserve.

9. RESERVES

(a) You are entitled to place prior to the auction a reserve on any lot consigned, being the minimum hammer price at which that lot may be sold. Reserves must be reasonable and we may decline to offer goods which in our opinion would be subject to an unreasonably high reserve (in which case goods carry the storage and loss and damage warranty charges stipulated in these Terms of Consignment).

(b) A reserve once set cannot be changed except with our consent.

(c) Where a reserve has been set which we consider unreasonably high, an unsold charge will be payable in the event that the lots fails to sell, being the agreed selling terms calculated on the reserve, LDW at 1.5% and any photographic charges.

(d) Where a reserve has been placed only we may bid on your behalf and only up to the reserve (if any) and you may in no circumstances bid personally.

(e) Reserves are not usually accepted for lots expected to realise below £100.

10. **ELECTRICAL ITEMS.** These are subject to detailed statutory safety controls. Where such items are accepted for sale you accept responsibility for the cost of

testing by external contractors. Goods not certified as safe by an electrician (unless antiques) will not be accepted for sale. They must be removed at your expense on your being notified. We reserve the right to dispose of unsafe goods as refuse, at your expense.

11. **SOFT FURNISHINGS.** The sale of soft furnishings is strictly regulated by statute law in the interests of fire safety. Goods found to infringe safety regulations will not be offered and must be removed at your expense. We reserve the right to dispose of unsafe goods as refuse, at your expense. The rights of disposal referred to in clause 10 and 11 are subject to the provisions of The Torts (Interference with Goods) Act 1977.

12. **DESCRIPTION.** Please assist us with accurate information as to the provenance, lawful import etc. of goods where this is relevant. There is strict liability for the accuracy of descriptions under modern consumer legislation and in some circumstances responsibility lies with sellers if inaccuracies occur. We will assume that you have approved the catalogue description of your lots and that your lots match those descriptions unless informed to the contrary. Where we are obliged to return the price to the buyer when the lot is a deliberate forgery under Condition 15 of the Conditions of Sale and we have accounted to you for the proceeds of sale you agree to reimburse us the sale proceeds and in any event within 7 days of our written notice to do so.

13. **UNSOLD.** If an item is unsold it may at our discretion be re-offered at a future sale. Where in our opinion an item is unsaleable you must collect such items from the saleroom promptly on being so informed. Otherwise, storage charges may be incurred. We reserve the right to charge for storage in these circumstances at a reasonable daily rate.

14. **WITHDRAWN AND BOUGHT IN ITEMS.** These are liable to incur a charge of 15% commission, 1.5 % Loss and Damage Warranty and any other costs incurred including but not limited to illustration and restoration fees all of these charges being subject to VAT on being bought in or withdrawn after being catalogued.

15. **CONDITIONS OF SALE.** You agree that all goods will be sold on our Conditions of Sale for Public Auctions. In particular you undertake that you have the right to sell the goods either as owner or agent for the owner with good and marketable title and free and clear of any third party rights or claims. You undertake to compensate us and any buyer or third party for all losses liabilities, costs and expenses suffered or incurred arising out of or in connection with any breach of this undertaking. We will also, at our discretion, and as far as practicable, confirm that an item consigned for sale does not appear on the Art Loss register, which is administered by an independent third party.

16. **DUE DILIGENCE CHECKS AND ANTI-MONEY LAUNDERING PROCEDURES.** Under the money laundering regulations in force we are required to carry out relevant due diligence checks. This includes verifying the identity of all customers we transact with as well as any beneficial owners on behalf of whom they may transact. Vendors who are unable to or refuse to supply required identification documents and proof of address will not be able to consign to Dreweatts auctions. Copies of customer due diligence checks will be stored for as long as it is necessary to satisfy legal requirements in an appropriate storage facility, which for the avoidance of doubt may include storage solely in electronic form. We reserve the right to withhold the monies owed until the vendor provides the information necessary to complete the anti-money laundering checks.

17. AUTHORITY TO DEDUCT COMMISSION AND EXPENSES AND RETAIN PREMIUM AND INTEREST

(a) You authorise us to deduct commission at the stated rate and all expenses incurred for your account from the hammer price and consent to our right to retain beneficially the premium paid by the buyer in accordance with our Conditions of Sale for Public Auctions and any interest earned on the sale proceeds until the date of settlement.

(b) In case of lots unsold at auction you authorise us at our discretion to reoffer such lots and negotiate a sale within seven days of the auction date, in which case the same charges will be payable as if such lots had been sold at auction and so far as appropriate these Terms apply.

18. **WAREHOUSING.** We disclaim all liability for goods delivered to our saleroom without sufficient sale instructions and reserve the right to make minimum warehousing charge of £10 per lot per day. Unsold lots are subject to the same charges if you do not remove them within a reasonable time of notification. If not removed within three weeks we reserve the right to sell them and defray charges from any net proceeds of sale or at your expense to consign them to the local authority for disposal.

19. **SETTLEMENT.** After sale settlement of the net sum due to you normally takes place within 28 days of the sale unless the buyer has not paid for the goods or the checks necessary under the current Money Laundering Regulations have not been completed. In this case no settlement will then be made but we will take your instructions in the light of our Conditions of Sale for Public Auctions. You authorise any sums owed by you to us on other transactions to be deducted from the sale proceeds. You must note the liability to reimburse the proceeds of sale to us as under the circumstances provided for in Condition 12 above. You should therefore bear this potential liability in mind before parting with the proceeds of sale until the expiry of 28 days from the date of sale.

CONDITIONS OF SALE FOR PUBLIC AUCTIONS

Dreweatts carries on business with bidders, buyers and all those present in the auction room prior to or in connection with a sale by auction at our salerooms on our Auction Terms and Conditions or Public Auctions including these Conditions of Sale for Public Auctions and all bidders, buyers and others participating in a public auction accept that these terms apply to the exclusion of any terms and conditions contained in any of those person's own documents even if the same purport to provide that that person's own or some other terms prevail. Any particular public auction and/or any particular lot in an auction may be subject to different or additional terms which will be published in our online auction catalogue. Please note that our Auction Terms and Conditions including these Conditions of Sale for Public Auctions relate to auctions held in one of our salerooms and we have separate terms and conditions for our online auctions.

1. **DEFINITIONS**
In these Conditions:
(a) "auctioneer" means the firm of Dreweatts or its authorised auctioneer, as appropriate;
(b) "deliberate forgery" means an imitation made with the intention of deceiving as to authorship, origin, date, age, period, culture or source but which is unequivocally described in the catalogue as being the work of a particular creator and which at the date of the sale had a value materially less than it would have had if it had been in accordance with the description;
(c) "hammer price" means the level of bidding reached (at or above any reserve) when the auctioneer brings down the hammer;
(d) "terms of consignment" means the stipulated terms and rates of commission on which Dreweatts accepts instructions from sellers or their agents;
(e) "total amount due" means the hammer price in respect of the lot sold together with any premium, Value Added Tax chargeable and any additional charges payable by a defaulting buyer under these Conditions;
(f) "sale proceeds" means the net amount due to the seller, being the hammer price of the lot sold less commission at the stated rate, Value Added Tax chargeable and any other amounts due to us by the seller in whatever capacity and however arising;
(g) "You", "Your", etc. refer to the buyer as identified in Condition 2.
(h) The singular includes the plural and vice versa as appropriate.
2. **BIDDING PROCEDURES AND THE BUYER**
(a) Bidders are required to register their particulars before bidding by completing a sale registration form and to satisfy any security arrangements before entering the auction room to view or bid;
(b) Under the money laundering regulations in force we are required to verify the identity of all customers we transact with as well as any beneficiaries on behalf of whom they may transact. Customers who are unable to or refuse to supply required identification documents and proof of address will not be able to bid in Dreweatts auctions. Copies of customer due diligence checks will be stored for as long as it is necessary to satisfy legal requirements in an appropriate storage facility which for the avoidance of doubt may include storage solely in electronic form;
(c) the maker of the highest bid accepted by the auctioneer conducting the sale shall be the buyer at the hammer price and any dispute about a bid shall be settled at the auctioneer's absolute discretion by reoffering the Lot during the course of the auction or otherwise. The auctioneer shall act reasonably in exercising this discretion.
(d) Bidders shall be deemed to act as principals;
(e) Our right to bid on behalf of the seller is expressly reserved up to the amount of any reserve and the right to refuse any bid is also reserved.
3. **INCREMENTS.** Bidding increments shall be at the auctioneer's sole discretion.
4. **THE PURCHASE PRICE.** The buyer shall pay the purchase price together with a premium thereon of 30% which shall include VAT on the premium at the rate imposed by law. The buyer will also be liable for any royalties payable under Droit de Suite as set out under Information for Buyers.
5. **VALUE ADDED TAX.** Value Added Tax on the hammer price is imposed by law on all items affixed with a dagger (†) or double dagger (‡). Value Added Tax is charged at the appropriate rate prevailing by law at the date of sale and is payable by buyers of relevant Lots. (Please refer to "Information for Buyers" for a brief explanation of the VAT position).
6. **PAYMENT**
(a) Immediately a Lot is sold you will:
(i) give to us, if requested, proof of identity, and
(ii) pay to us the total amount due or in such other way as is agreed by us.

(b) Any payments by you to us may be applied by us towards any sums owing from you to us on any account whatever without regard to any directions of you or your agent, whether expressed or implied.
(c) In order to comply with money laundering regulations we reserve the right to require proof of source of funds and/ or confirmation of the nature and source of wealth for all receipts of monies from clients directly or from third parties for payments on behalf of clients. Lots will only be released once we have completed necessary checks under the current Money Laundering Regulations.
7. **TITLE AND COLLECTION OF PURCHASES**
(a) The ownership of any Lots purchased shall not pass to you until you have made payment in full to us of the total amount due.
(b) You shall at your own risk and expense take away any lots that you have purchased and paid for not later than 3 working days following the day of the auction after which you shall be responsible for any removal, storage and insurance charges.
(c) No purchase can be claimed or removed until it has been paid for and we have completed necessary checks under the current Money Laundering Regulations.
8. **REMEDIES FOR NON-PAYMENT OR FAILURE TO COLLECT PURCHASES**
(a) If any Lot is not paid for in full and taken away in accordance with these Conditions or if there is any other breach of these Conditions, we, as agent for the seller and on our own behalf, shall at our absolute discretion and without prejudice to any other rights we may have, be entitled to exercise one or more of the following rights and remedies:
(i) to proceed against you for damages for breach of contract;
(ii) to rescind the sale of that Lot and/or any other Lots sold by us to you;
(iii) to resell the Lot (by auction or private treaty) in which case you shall be responsible for any resulting deficiency in the total amount due (after crediting any part payment and adding any resale costs). Any surplus so arising shall belong to the seller;
(iv) to remove, store and insure the Lot at your expense and, in the case of storage, either at our premises or elsewhere;
(v) to charge interest at a rate not exceeding 1.5% per month on the total amount due to the extent it remains unpaid for more than 3 working days after the sale;
(vi) to retain that or any other Lot sold to you until you pay the total amount due;
(vii) to reject or ignore bids from you or your agent at future auctions or to impose conditions before any such bids shall be accepted;
(viii) to apply any proceeds of sale of other Lots due or in future becoming due to you towards the settlement of the total amount due and to exercise a lien (that is a right to retain possession of) any of your property in our possession for any purpose until the debt due is satisfied.
(b) We shall, as agent for the seller and on our own behalf pursue these rights and remedies only so far as is reasonable to make appropriate recovery in respect of breach of these conditions.
9. **THIRD PARTY LIABILITY.** All bidders, buyers and other members of the public on our premises are there at their own risk and must note the lay-out of the accommodation and security arrangements. Accordingly neither the auctioneer nor our employees or agents shall incur liability for death or personal injury or for the safety of the property of persons visiting prior to or at a sale (except in each case as may be required by law by reason of our negligence)
10. **COMMISSION BIDS.** Whilst prospective buyers are strongly advised to attend the auction and are always responsible for any decision to bid for a particular Lot and shall be assumed to have carefully inspected and satisfied themselves as to its condition, we will if so instructed clearly and in writing execute bids on their behalf. Neither the auctioneer nor our employees or agents shall be responsible for any failure to do so.
Where two or more commission bids at the same level are recorded we reserve the right in our absolute discretion to prefer the first bid so made.
11. **WARRANTY OF TITLE AND AVAILABILITY.** The seller warrants to the auctioneer and you that the seller is the true owner of the property consigned or is properly authorised by the true owner to consign for sale and is able to transfer good and marketable title to the property free from any third party claims.
Save as expressly set out above, all other warranties, conditions or other terms which might have effect between the Seller and you, or us and you, or be implied or incorporated by statute, common law or otherwise are excluded to the fullest extent permitted by law.
12. **AGENCY.** The auctioneer normally acts as agent only and disclaims any responsibility for default by sellers or buyers.

13. **TERMS OF SALE.** The seller acknowledges that Lots are sold subject to the stipulations of these Conditions in their entirety and on the Terms of Consignment for Public Auctions as notified to the consignor at the time of the entry of the Lot.
14. **DESCRIPTIONS AND CONDITION**
(a) Whilst we seek to describe lots accurately, it may be impractical for us to carry out exhaustive due diligence on each lot. Prospective buyers are given ample opportunities to view and inspect before any sale and they (and any independent experts on their behalf) must satisfy themselves as to the accuracy of any description applied to a lot. Prospective buyers also bid on the understanding that, inevitably, representations or statements by us as to authorship, genuineness, origin, date, age, provenance, condition or estimated selling price involve matters of opinion. We undertake that any such opinion shall be honestly and reasonably held and accept liability for opinions given negligently or fraudulently. Subject to the foregoing neither we the auctioneer nor our employees or agents nor the seller accept liability for the correctness of such opinions and all conditions and warranties, whether relating to description, condition or quality of lots, express, implied or statutory, are hereby excluded. Dreweatts is not liable for damage to gilded picture frames, plaster picture frames or picture frame glass; if the Lot is or becomes dangerous, we may dispose of it without notice to you in advance in any manner we see fit and will be under no liability for doing so. This Condition is subject to the next following Condition concerning deliberate forgeries and applies save as provided for in paragraph 6 "information to buyers".
(b) Private treaty sales made under these Conditions are deemed to be sales by auction for purposes of consumer legislation.
15. **FORGERIES.** Notwithstanding the preceding Condition, any Lot which proves to be a deliberate forgery (as defined) may be returned to us by you within 21 days of the auction provided it is in the same condition as when bought, and is accompanied by particulars identifying it from the relevant catalogue description and a written statement of defects. If we are satisfied from the evidence presented that the Lot is a deliberate forgery we shall refund the money paid by you for the Lot including any buyer's premium provided that (1) if the catalogue description reflected the accepted view of scholars and experts as at the date of sale or
(2) you personally are not able to transfer a good and marketable title to us, you shall have no rights under this condition.
The right of return provided by this Condition is additional to any right or remedy provided by law or by these Conditions of Sale.
16. **PRIVACY NOTICE.** We will hold and process any personal data in relation to you in accordance with our current privacy policy, a copy of which is available on our website www.dreweatts.com/privacy-policy/.
GENERAL
17. We shall have the right at our discretion, to refuse admission to our premises or attendance at our auctions by any person.
18. (a) Any right to compensation for losses liabilities and expenses incurred in respect of and as a result of any breach of these Conditions and any exclusions provided by them shall be available to the seller and/or the auctioneer as appropriate.
(b) Such rights and exclusions shall extend to and be deemed to be for the benefit of employees and agents of the seller and/or the auctioneer who may themselves enforce them.
19. Any notice to any buyer, seller, bidder or viewer may be given by first class mail, email or Swiftmail in which case it shall be deemed to have been received by the addressee 48 hours after posting.
20. Special terms may be used in catalogue descriptions of particular classes of items in which case the descriptions must be interpreted in accordance with any glossary appearing at the commencement of the catalogue.
21. Any indulgence extended to bidders, buyers or sellers by us notwithstanding the strict terms of these Conditions or of the Terms of Consignment shall affect the position at the relevant time only and in respect of that particular concession only; in all other respects these Conditions shall be construed as having full force and effect.
22. These Conditions shall be governed by and construed in accordance with English law and the parties irrevocably submit to the exclusive jurisdiction of the English courts.

DREWEATTS

NEWBURY

Dreweatts
Donnington Priory
Newbury
Berkshire RG14 2JE
+44 (0) 1635 553 553
info@dreweatts.com

MANAGING DIRECTOR

Vicki Wonfor

CHAIRMAN

Will Richards

DEPUTY CHAIRMAN

James Nicholson

LONDON

Dreweatts / Bloomsbury Auctions
16-17 Pall Mall
St James's
London SW1Y 5LU
+44 (0) 20 7839 8880
info@bloomsburyauctions.com
info@dreweatts.com

HAMBRIDGE LANE

Dreweatts
1 Hambridge Lane
Newbury
Berkshire RG14 5TU
+44 (0) 1635 553 553
info@dreweatts.com

GROUP DEPARTMENTS

AUTOGRAPHS AND EPHEMERA

Ania Hanrahan
ahanrahan@dreweatts.com

ASIAN CERAMICS AND WORKS OF ART

Mark Newstead
Dr Yingwen Tao
Qinyi He
asian@dreweatts.com

BLOOMSBURY AUCTIONS BOOKS

AND MANUSCRIPTS
Rupert Powell
Dido Arthur
Justin Phillips
Max Hasler
Richard Caroll
info@bloomsburyauctions.com

BRITISH AND EUROPEAN CERAMICS AND GLASS

Mark Newstead
Geoffrey Stafford Charles
interiors@dreweatts.com

BRITISH AND EUROPEAN SCULPTURE AND WORKS OF ART

Silas Currie Leigh-Wood
sculpture@dreweatts.com

CLOCKS AND SCIENTIFIC INSTRUMENTS

Leighton Gillibrand
clocks@dreweatts.com

COUNTRY SPORTING

Geoffrey Stafford Charles
gscharles@dreweatts.com

FURNITURE AND CARPETS

Ben Brown
Elaine Binning
Ashley Matthews
William Turkington
Mitchell Tompkins
furniture@dreweatts.com

HOUSE SALES AND PRIVATE COLLECTIONS

Joe Robinson
Peter Horwood
Rosie Jarvie
Eloise Kerr-Smiley
Arabella Methuen
housesales@dreweatts.com

JEWELLERY, SILVER, WATCHES AND OBJECTS OF VERTU

James Nicholson
Charlotte Peel
Nick Mann
Tessa Parry
jsw@dreweatts.com

LIVE STEAM AND MODEL ENGINEERING WORKS OF ART

Lucie Hobbs
transport@dreweatts.com

MODERN AND CONTEMPORARY ART

Jennie Fisher
Francesca Walsh
Will Porter (Business Development)
Anastasia Fedoseeva
pictures@dreweatts.com

MODERN DESIGN AND DECORATIVE ART

Gemma Sanders
Geoffrey Stafford Charles
Ashley Matthews
Luke McGurk
design@dreweatts.com

OLD MASTER, BRITISH AND EUROPEAN ART

Brandon Lindberg
Lucy Darlington
Daniele Amesso
Isabelle Rietkerk
pictures@dreweatts.com

WINE

Hugo Spencer
Mark Robertson
Violette Jongbloed
wine@dreweatts.com

CONSIGNMENT MANAGEMENT

Lucie Hobbs
Christy Chambers
consignments@dreweatts.com

VALUATIONS FOR PROBATE, INSURANCE AND CGT

Emma Terry
Janice Cliff
valuations@dreweatts.com



DREWEATTS
EST. 1759