

A PRIVATE COLLECTION A GRAND TOUR THROUGH BORDEAUX AND BURGUNDY

TUESDAY 24 JUNE 2025



DREWEATTS
EST. 1759

INVITING ENTRIES
CONSIGNMENT DEADLINE 4 JULY

FINE AND RARE
WINE & SPIRITS

AUCTION | NEWBURY | 29 JULY

Enquiries: wine@dreweatts.com 01635 553 553

dreweatts.com
NEWBURY | LONDON

DREWEATTS
EST. 1759

A PRIVATE COLLECTION A GRAND TOUR THROUGH BORDEAUX AND BURGUNDY

TUESDAY 24 JUNE 2025

LOTS 1-298 | 10.30AM

"Property of a passionate connoisseur who has assembled this incredible private collection over many years through purchasing en primeur, or exclusive release, through one of the most reputable merchants in the United Kingdom. The wines have remained in Octavian since being delivered by the respective winery, therefore the provenance for these wines is unquestionable."

If you should wish for more detailed information on a particular wine, please contact the Dreweatts wine department on wine@dreweatts.com

ENQUIRIES
wine@dreweatts.com

NEWBURY
Donnington Priory, RG14 2JE
+44 (0) 1635 553 553
LONDON
16-17 Pall Mall, SW1Y 5LU
+44 (0) 20 7839 8880
info@dreweatts.com
dreweatts.com

DREWEATTS
EST. 1759

A GUIDE FOR BUYERS

REGISTRATION AND BIDDING

We advise bidders to register at least 48 hours in advance of the auction as we will need to complete Know Your Client checks on all registrants in order to comply with sanctions regimes. Clients are advised to register with a correct account as re-billing will not be possible. We allow commission (or absentee bids), telephone bids, live online bidding, and in person bidding. More information is available in our Terms of Sale at the back of this catalogue, and on our website.

CHARGES

All purchases are subject to a buyer’s premium, which is 20% of the hammer price (24% including VAT). Symbol β in the catalogue indicates that the lot is under Bond and, if released for delivery to a UK address, will additionally incur UK duty and 20% VAT charged on both duty and hammer price.

VIEWING/CONDITION

All wine and spirits are stored off-site. Images of lots for the purposes of condition can be viewed online and should be referred to prior to bidding. Descriptions, ullages and conditions of wines are described as correctly as possible at the time of the publication of this catalogue. Purchasers of old wines must assure themselves regarding ullage levels, labels etc. No returns will be accepted.

PAYMENT

If you are successful, an invoice will be sent to the email address registered on your bidder account. The invoice will include detailed payment and collection information. If you wish to see this in advance, please visit our website. Items must be paid for in full and Know Your Client checks must be completed before we can release any purchases. Third party payments are not accepted. First time buyers may also be subject to restrictions on the methods of payment we can accept. Please confirm this with the saleroom prior to collection.

COLLECTIONS, SHIPPING AND STORAGE

Wine and spirits offered for sale via Dreweatts are stored at LCB Eton Park in Burton-on-Trent:

Dreweatts
c/o LCB Eton Park
Derby Road
Derby Turn
Burton-on-Trent
DE14 1RY

Storage charges will apply for any lots not collected within 10 days of the sale: £2.50 per lot fixed charge and £0.20 per week or part week thereafter. Please note for large consignments there may be additional charges. These charges will be the sole liability of the purchaser and will be billed directly to them by Dreweatts. To arrange long term wine storage with Dreweatts, please contact the Dreweatts Wine Department.

Collections can be made 5 days following the sale or LCB Eton Park in Burton-on-Trent.

Delivery can be delivered to buyers via LCB Eton Park’s delivery service at very competitive rates. Please contact Dreweatts Wine Department for a quote.

Warehouse transfers can also be made within the LCB network and to all other UK warehouses. Please contact Dreweatts Wine Department for a quote.

Please contact us to obtain a quotation and for details regarding international shipments.

Please do not arrange to collect items without having paid online or by bank transfer beforehand.

For further details, see Terms of Sale at the back of this catalogue or on our website.

GENERAL ABBREVIATIONS USED IN THIS CATALOGUE

OWC – Original Wooden Case
WC – Wooden Case (non-original)
OCC – Original Cardboard Case

Further abbreviations are used in relation to the level of wines for Bordeaux style bottles:

Into Neck (IN)
Base of Neck (BN)
Very Top Shoulder (VTS)
Top Shoulder (TS)
High Shoulder (HS)
Mid Shoulder (MS)
Low Shoulder (LS)
Bottom Shoulder (BS)

Note, bottle sizes are 75cl unless otherwise stated in the lot description.

CONDITIONS OF SALE

This auction is subject to our Auction Terms and Conditions (see back of catalogue or our website for further details).

CONDITIONS OF SALE RELATING TO WINE AND SPIRITS SALES

1. **Buyer’s premium** is charged per lot at 20% of the hammer price (24% including VAT).

2. **VAT. (t)** indicates that VAT is payable by the purchaser at the standard rate (20%) on the hammer prices as well as being an element in the buyer’s premium. See “Commission Charges” for further details.

3. **IN BOND. (β)** indicates the wine is offered In Bond.

4. **Bidding** will be at Duty Paid prices other than for those lots marked “**IN BOND. (β)**”. For Commission Bidding see “Conditions of Sale for Public Auctions” no 10.

5. **Description of the lots:** Descriptions, ullages and conditions of wines are described as correctly as possible at the time of the publication of this catalogue. Purchasers of old wines must assure themselves regarding ullage levels, labels etc. No returns will be accepted. Refer to General Abbreviations Used In This Catalogue on previous page.

6. **Vintages:** Where a vintage cannot be ascertained from a label, it may still be noted based on cork branding, cellar records or other corroborating evidence including other lots from the same source.

7. **Condition Reports:** Images of the majority of the lots for the purposes of condition can be viewed online at www.dreweatts.com and should be referred to prior to bidding. It is the responsibility of potential buyers to obtain any additional information (if any) on lots on which they intend to bid. Catalogue descriptions are for reference as to the contents of a lot and should not be relied upon as a statement as to the condition of a lot.

8. **Each lot** shall be at the Purchaser’s risk from the conclusion of the auction until payment and collection are made.

9. **Bottle sizes** are 75cl unless otherwise stated in the lot description.

DUTY RATES (EFFECTIVE 1 FEBRUARY 2025)

From 1 February 2025 the rate of UK duty is determined by the ABV and charged according to band rates. Rates applicable to wine and spirits are:

| Alcohol by volume (ABV) | Amount of duty in £ (pounds) for each litre of pure alcohol in the product |
|-------------------------|--|
| 0.1 to 3.5% | 9.61 |
| 3.5% to 8.4% | 25.67 |
| 8.5% to 22% | 29.54 |
| Stronger than 22% | 32.79 |

For guidance, below is the duty per bottle/ABV table.

| ABV | 1 x 75cl Bottle | ABV | 1 x 75cl Bottle |
|-------|-----------------|-------|-----------------|
| 7% | £1.35 | 13.5% | £2.99 |
| 7.5% | £1.44 | 14% | £3.10 |
| 8% | £1.54 | 14.5% | £3.21 |
| 8.5% | £1.88 | 15% | £3.32 |
| 9% | £1.99 | 15.5% | £3.43 |
| 9.5% | £2.10 | 16% | £3.54 |
| 10% | £2.22 | 16.5% | £3.66 |
| 10.5% | £2.33 | 17% | £3.77 |
| 11% | £2.44 | 17.5% | £3.88 |
| 11.5% | £2.55 | 18% | £3.99 |
| 12% | £2.66 | 18.5% | £4.10 |
| 12.5% | £2.77 | 19% | £4.21 |
| 13% | £2.88 | 19.5% | £4.32 |
| 13.5% | £2.99 | 20% | £4.43 |

(Note, in this table we have used 0.5% ABV increments, but every additional 0.1% ABV will incur additional duty.)

THINKING OF SELLING?

Now welcoming consignments for our forthcoming Wine and Spirits Sales.

For further details or a free auction valuation, please contact:

Hugo Spencer | Mark Robertson | Violette Jongbloed

E-mail: wine@dreweatts.com | Direct tel: + 44 (0) 1635 553 594 | Main tel: + 44 (0) 1635 553 553

A PRIVATE COLLECTION

A GRAND TOUR THROUGH BORDEAUX AND BURGUNDY



| | |
|------------|----------------|
| Bordeaux | Lots 1 – 84 |
| Sauternes | Lot 85 |
| Burgundy | Lots 86 – 264 |
| Beaujolais | Lots 265 – 266 |
| Rhone | Lots 267 – 270 |
| Italy | Lots 271 – 285 |
| German | Lots 286 – 298 |

SPECIALISTS FOR THIS AUCTION



Hugo Spencer
Head of Wine Department
hspencer@dreweatts.com



Mark Robertson
Senior Wine Consultant
wine@dreweatts.com



Violette Jongbloed
Junior Wine Specialist
vjongbloed@dreweatts.com

A PRIVATE COLLECTION

A GRAND TOUR THROUGH BORDEAUX AND BURGUNDY

We are delighted to present this Grand Tour through some of the finest red wines of Bordeaux and Burgundy.

An extensive variety of formats, vineyards and vintages - this collection has been put together over many years with a simple objective...a love of wine.

The Chateaux of Bordeaux have been notable for centuries - from Chateaux d'Issan at Henry II's wedding or Thomas Jefferson's love of Chateaux Haut-Brion. Contrarily the landlocked wines of Burgundy remained largely unknown until the 20th century and although the vineyards have always held a mystique, the great wine makers and families have only risen to prominence in the last 50 years. This cellar is a monument to this change. With only tiny amounts made and allocated accordingly, this sale offers a unique opportunity to own Burgundian wines never seen on the market before.

The entire portfolio is a highlight but do seek out the truly outstanding wines of 2015 and 2016 from Bordeaux.

Large formats from Domaines Jean-Marie Fourrier, Comte Georges de Vogue and Alain Hudelot-Noellat and don't forget about the wonderful Italian and German offerings concluding the sale!


We hope you enjoy your journey on this Grand Tour.

It is a privilege for Dreweatts to hold this auction.





GRAND VIN
DE
CHATEAU LATOUR
PREMIER GRAND CRU CLASSE
2005
PAUILLAC



GRAND VIN
DE
CHATEAU LATOUR
PREMIER GRAND CRU CLASSE
2005
PAUILLAC



GRAND VIN
DE
CHATEAU LATOUR
PREMIER GRAND CRU CLASSE
2005
PAUILLAC



GRAND VIN
DE
CHATEAU LATOUR
PREMIER GRAND CRU CLASSE
2005
PAUILLAC

BORDEAUX

| | |
|---|---|
| 1 β | 5 β |
| 2001 Chateau Mouton Rothschild Premier Cru Classe, Pauillac | 2005 Chateau Calon Segur 3eme Cru Classe, Saint-Estephe |
| 1x150cl | OWC |
| 2003 Chateau Mouton Rothschild Premier Cru Classe, Pauillac | 12x75cl |
| 1x150cl | IN BOND |
| 2008 Chateau Mouton Rothschild Premier Cru Classe, Pauillac | £650-850 |
| 1x150cl | 6 β |
| OWC | 2005 Chateau Calon Segur 3eme Cru Classe, Saint-Estephe |
| Total 3x150cl | OWC |
| IN BOND | 12x75cl |
| (released ex-chateau) | IN BOND |
| £1,300-1,700 | £650-850 |
| 2 β | 7 β |
| 2005 Chateau Latour Premier Cru Classe, Pauillac | 2006 Chateau Figeac Premier Grand Cru Classe A, Saint-Emilion Grand Cru |
| OWC | OWC |
| 6x75cl | 12x75cl |
| IN BOND | IN BOND |
| £2,000-2,600 | £1,200-1,600 |
| 3 β | 8 β |
| 2005 Chateau Pichon Longueville Comtesse de Lalande 2eme Cru Classe, Pauillac | 2006 Chateau L’Evangile, Pomerol |
| OWC | OWC |
| 3x150cl | 12x75cl |
| IN BOND | IN BOND |
| £900-1,200 | £750-950 |
| 4 β | 9 β |
| 2005 Chateau Montrose 2eme Cru Classe, Saint-Estephe | 2007 Chateau Haut-Bailly Cru Classe, Pessac-Leognan |
| OWC (damaged base) | OWC |
| 12x75cl | 12x75cl |
| IN BOND | IN BOND |
| £900-1,200 | £340-420 |





10 β

2007 Chateau L'Evangile, Pomerol
OWC
12x75cl
IN BOND

£800-1,100

11 β

2008 Chateau La Conseillante, Pomerol
OWC
12x75cl
IN BOND

£750-950

12 β

2008 Chateau L'Evangile, Pomerol
OWC
12x75cl
IN BOND

£750-950

13 β

2009 Chateau Mouton Rothschild Premier Cru Classe,
Pauillac
OWC
6x75cl
IN BOND

£1,600-2,200

14 β

2009 Chateau Haut-Brion Premier Cru Classe,
Pessac-Leognan
OWC
6x75cl
IN BOND

£2,000-2,500

15 β

2009 Chateau Pichon Longueville Comtesse de
Lalande 2eme Cru Classe, Pauillac
OWC
3x150cl
IN BOND

£500-700

16 β

2009 Chateau Lynch-Bages 5eme Cru Classe, Pauillac
OWC
12x75cl
IN BOND

£750-950

17 β

2009 Chateau Malescot St. Exupery 3eme Cru Classe,
Margaux
OWC
12x75cl
IN BOND

£600-700

18 β

2009 Chateau Malescot St. Exupery 3eme Cru Classe,
Margaux
OWC (damaged lid)
12x75cl
IN BOND

£600-700

19 β

2009 Chateau Giscours 3eme Cru Classe, Margaux
OWC
6x150cl
IN BOND

£400-500

| | | | |
|---|--|---|--|
| 20 β 2009 Chateau Talbot 4eme Cru Classe, Saint-Julien OWC 12x75cl IN BOND £440-600 | 25 β 2010 Chateau Branaire-Ducru 4eme Cru Classe, Saint-Julien OWC 12x75cl IN BOND £500-650 | 30 β 2014 Chateau Lynch-Bages 5eme Cru Classe, Pauillac OWC 12x75cl IN BOND £650-800 | 35 β 2014 Chateau L'Eglise-Clinet, Pomerol OWC 6x75cl IN BOND £340-460 |
| 21 β 2009 Chateau Talbot 4eme Cru Classe, Saint-Julien OWC 12x75cl IN BOND £440-600 | 26 β 2010 Chateau Branaire-Ducru 4eme Cru Classe, Saint-Julien OWC 12x75cl IN BOND £500-650 | 31 β 2014 Chateau Rauzan-Segla 2eme Cru Classe, Margaux OWC (damaged lid) 12x75cl IN BOND £340-420 | 36 β 2014 Chateau L'Eglise-Clinet, Pomerol OWC 6x75cl IN BOND £340-460 |
| 22 β 2009 Clos du Marquis, Saint-Julien OWC 12x75cl IN BOND £400-500 | 27 β 2011 Chateau Leoville Barton 2eme Cru Classe, Saint-Julien OWC 12x75cl IN BOND £380-480 | 32 β 2014 Chateau Rauzan-Segla 2eme Cru Classe, Margaux OWC 12x75cl IN BOND £340-420 | 37 β 2014 Chateau L'Evangile, Pomerol OWC 6x75cl IN BOND £340-460 |
| 23 β 2010 Chateau Lynch-Bages 5eme Cru Classe, Pauillac OWC 12x75cl IN BOND £750-1,000 | 28 β 2011 Chateau Tertre Roteboeuf, Saint-Emilion Grand Cru OWC 6x75cl IN BOND £380-480 | 33 β 2014 Chateau Figeac Premier Grand Cru Classe A, Saint-Emilion Grand Cru OWC 3x150cl IN BOND £500-600 | 38 β 2014 Chateau L'Evangile, Pomerol OWC 6x75cl IN BOND £340-460 |
| 24 β 2010 Chateau Branaire-Ducru 4eme Cru Classe, Saint-Julien OWC 12x75cl IN BOND £500-650 | 29 β 2011 Chateau Tertre Roteboeuf, Saint-Emilion Grand Cru OWC 6x75cl IN BOND £380-480 | 34 β 2014 Chateau La Conseillante, Pomerol OWC 6x150cl IN BOND £700-850 | 39 β 2014 Chateau Hosanna, Pomerol 2x150cl IN BOND £180-240 |
| | | | 40 β 2014 Chateau La Grave, Pomerol OWC 12x75cl IN BOND £240-280 |



41 β
2014 Château La Grave, Pomerol
OWC
12x75cl
IN BOND

£240-280

42 β
2014 Château La Grave, Pomerol
OWC
1x300cl
IN BOND

£100-150

43 β
2014 Roc de Cambes, Cotes de Bourg
OWC
6x75cl
IN BOND

£180-240

44 β
2014 Roc de Cambes, Cotes de Bourg
OWC
6x75cl
IN BOND

£180-240

45 β
2014 Roc de Cambes, Cotes de Bourg
OWC
6x75cl
IN BOND

£180-240

46 β
2014 Roc de Cambes, Cotes de Bourg
OWC
6x75cl
IN BOND

£180-240

47 β
2015 Château Palmer 3eme Cru Classe, Margaux
OWC
6x75cl
IN BOND

£650-850

48 β
2015 Château La Fleur-Petrus, Pomerol
OWC
6x75cl
IN BOND

£500-600

49 β
2015 Château La Fleur-Petrus, Pomerol
OWC
6x75cl
IN BOND

£500-600

50 β
2015 Château La Fleur-Petrus, Pomerol
OWC
6x75cl
IN BOND

£500-600

51 β
2015 Château La Fleur-Petrus, Pomerol
OWC
3x150cl
IN BOND

£500-600

52 β
2015 Château Latour a Pomerol, Pomerol
OWC
6x75cl
IN BOND

£150-200

53 β
2015 Chateau Latour a Pomerol, Pomerol
OWC
6x75cl
IN BOND

£150-200

54 β
2015 Chateau Latour a Pomerol, Pomerol
OWC
6x75cl
IN BOND

£150-200

55 β
2015 Chateau Latour a Pomerol, Pomerol
OWC
1x300cl
IN BOND

£100-150

56 β
2015 Chateau La Grave, Pomerol
OWC
12x75cl
IN BOND

£300-400

57 β
2016 Chateau Lafite Rothschild Premier Cru Classe,
Pauillac
OWC
6x75cl
IN BOND

£1,800-2,400

58 β
2016 Chateau Mouton Rothschild Premier Cru Classe,
Pauillac
OWC
6x75cl
IN BOND

£1,500-2,000

59 β
2016 Ducru-Beaucaillou 2eme Cru Classe, Saint-Julien
OWC
6x75cl
IN BOND

£700-800

60 β
2016 Chateau Branaire-Ducru 4eme Cru Classe,
Saint-Julien
OWC
3x300cl
IN BOND

£300-400

61 β
2016 Chateau Phelan Segur, Saint-Estephe
OWC
1x600cl
IN BOND

£200-300

62 β
2016 Chateau Cheval Blanc Premier Grand Cru Classe
A, Saint-Emilion Grand Cru
OWC
6x75cl
IN BOND

£1,800-2,200

63 β
2016 Chateau Angelus, Saint-Emilion Grand Cru
OWC
6x75cl
IN BOND

£800-1,000

64 β
2016 Chateau La Conseillante, Pomerol
OWC
6x75cl
IN BOND

£560-750

65 β
2016 Chateau La Conseillante, Pomerol
OWC
6x75cl
IN BOND

£560-750

66 β
2016 Chateau La Conseillante, Pomerol
OWC
3x150cl
IN BOND

£560-750

67 β
2016 Chateau L'Evangile, Pomerol
OWC
6x75cl
IN BOND

£560-750

68 β
2016 Chateau L'Evangile, Pomerol
OWC
6x75cl
IN BOND

£560-750

69 β
2016 Chateau Latour a Pomerol, Pomerol
OWC
6x75cl
IN BOND

£280-340

70 β
2016 Chateau Latour a Pomerol, Pomerol
OWC
6x75cl
IN BOND

£280-340

71 β
2017 Chateau Mouton Rothschild Premier Cru Classe,
Pauillac
OWC
6x75cl
IN BOND

£1,200-1,600

72 β
2017 Chateau La Mission Haut-Brion Cru Classe,
Pessac-Leognan
OWC
6x75cl
IN BOND

£500-650

73 β
2017 Chateau La Mission Haut-Brion Cru Classe,
Pessac-Leognan
OWC
6x75cl
IN BOND

£500-650

| | |
|---|--|
| <p>74 β</p> <p>2017 Chateau Cheval Blanc Premier Grand Cru Classe A, Saint-Emilion Grand Cru</p> <p>OWC</p> <p>6x75cl</p> <p>IN BOND</p> <p>£1,200-1,600</p> | <p>80 β</p> <p>2019 Chateau Latour a Pomerol, Pomerol</p> <p>OWC</p> <p>6x75cl</p> <p>IN BOND</p> <p>£280-360</p> |
| <p>75 β</p> <p>2017 Chateau Pavie Premier Grand Cru Classe A, Saint-Emilion Grand Cru</p> <p>OWC</p> <p>6x75cl</p> <p>IN BOND</p> <p>£650-800</p> | <p>81 β</p> <p>2019 Roc de Cambes, Cotes de Bourg</p> <p>OWC</p> <p>6x75cl</p> <p>IN BOND</p> <p>£170-200</p> |
| <p>76 β</p> <p>2017 Chateau Rocheyron, Saint-Emilion Grand Cru</p> <p>OWC</p> <p>3x150cl</p> <p>IN BOND</p> <p><i>Packed individually</i></p> <p>£200-300</p> | <p>82 β</p> <p>2019 L'Aurage, Castillon-Cotes de Bordeaux</p> <p>OWC</p> <p>12x75cl</p> <p>IN BOND</p> <p>£200-300</p> |
| <p>77 β</p> <p>2017 Chateau Rocheyron, Saint-Emilion Grand Cru</p> <p>OWC</p> <p>1x300cl</p> <p>IN BOND</p> <p>£140-160</p> | <p>83 β</p> <p>2020 Petrus, Pomerol</p> <p>OWC</p> <p>3x75cl</p> <p>IN BOND</p> <p>£7,000-9,000</p> |
| <p>78 β</p> <p>2019 Chateau Tertre Roteboeuf, Saint-Emilion Grand Cru</p> <p>OWC</p> <p>6x75cl</p> <p>IN BOND</p> <p>£500-600</p> | <p>84 β</p> <p>2020 Chateau Latour a Pomerol, Pomerol</p> <p>OWC</p> <p>1x300cl</p> <p>IN BOND</p> <p>£120-170</p> |
| <p>79 β</p> <p>2019 Chateau Latour a Pomerol, Pomerol</p> <p>OWC</p> <p>6x75cl</p> <p>IN BOND</p> <p>£280-360</p> | <p>85 β</p> <p>2007 Chateau Suduiraut Premier Cru Classe, Sauternes</p> <p>OWC</p> <p>24x37.5cl</p> <p>IN BOND</p> <p>£220-320</p> |

SAUTERNES





BURGUNDY

- 86 β

2009 Domaine Comte Georges de Vogue,
Chambolle-Musigny Premier Cru

OWC

6x75cl

IN BOND

£1,000-1,500
- 87 β

2009 Domaine Comte Georges de Vogue,
Chambolle-Musigny Premier Cru

OWC

6x75cl

IN BOND

£1,000-1,500
- 88 β

2009 Joseph Roty, Gevrey-Chambertin,
Champs-Chenys

OCC

12x75cl

IN BOND

£600-800
- 89 β

2010 Hospices de Beaune, Mazis-Chambertin Grand
Cru, Cuvee Madeleine Collignon

Raised and Bottled by Lucien le Moine

3x150cl

IN BOND

£600-800
- 90 β

2010 Hospices de Beaune, Mazis-Chambertin Grand
Cru, Cuvee Madeleine Collignon

Raised and Bottled by Lucien le Moine

OCC

3x150cl

IN BOND

£600-800

- 91 β

2010 Domaine Rossignol-Trapet, Latricieres-
Chambertin Grand Cru

OCC

6x75cl

IN BOND

£500-700
- 92 β

2010 Lucien Le Moine, Morey-Saint-Denis Premier
Cru, Les Genavrieres

OCC (damaged)

6x75cl

IN BOND

£300-400
- 93 β

2010 Domaine Tortochot, Gevrey-Chambertin Premier
Cru, Lavaux Saint-Jacques

OCC (damaged)

6x75cl

IN BOND

£200-300
- 94 β

2011 Clos de Tart, Clos de Tart Grand Cru

OWC

3x150cl

IN BOND

£1,200-1,600
- 95 β

2011 Domaine Comte Georges de Vogue,
Chambolle-Musigny Premier Cru

OWC

1x150cl

IN BOND

£280-380



| | |
|---|--|
| <p>96 β</p> <p>2011 Clos de Tart, Morey-Saint-Denis Premier Cru, La Forge de Tart</p> <p>OCC</p> <p>6x75cl</p> <p>IN BOND</p> <p>£500-700</p> | <p>101 β</p> <p>2012 Domaine Michelet-Bissey, Echezeaux Grand Cru</p> <p>OCC</p> <p>6x75cl</p> <p>IN BOND</p> <p>£340-440</p> |
| <p>97 β</p> <p>2012 Pierre Damoy, Chambertin Grand Cru</p> <p>OCC</p> <p>6x75cl</p> <p>IN BOND</p> <p>£900-1,300</p> | <p>102 β</p> <p>2012 Domaine Michelet-Bissey, Echezeaux Grand Cru</p> <p>OCC</p> <p>6x75cl</p> <p>IN BOND</p> <p>£340-440</p> |
| <p>98 β</p> <p>2012 Pierre Damoy, Chapelle-Chambertin Grand Cru</p> <p>OCC</p> <p>6x75cl</p> <p>IN BOND</p> <p>£700-900</p> | <p>103 β</p> <p>2012 Domaine Rossignol-Trapet, Latricieres-Chambertin Grand Cru</p> <p>OCC</p> <p>6x75cl</p> <p>IN BOND</p> <p>£400-550</p> |
| <p>99 β</p> <p>2012 Benjamin Leroux, Griotte-Chambertin Grand Cru</p> <p>OWC</p> <p>6x75cl</p> <p>IN BOND</p> <p>£600-900</p> | <p>104 β</p> <p>2012 Maison Roche de Bellene, Clos Saint-Denis Grand Cru</p> <p>OWC</p> <p>6x75cl</p> <p>£400-600</p> |
| <p>100 β</p> <p>2012 Benjamin Leroux, Griotte-Chambertin Grand Cru</p> <p>OWC</p> <p>6x75cl</p> <p>IN BOND</p> <p>£600-900</p> | <p>105 β</p> <p>2012 Frederic Esmonin, Gevrey-Chambertin Premier Cru, Lavaut Saint-Jacques</p> <p>OCC</p> <p>6x75cl</p> <p>IN BOND</p> <p>£300-400</p> |



106 β
2012 Frederic Esmonin, Gevrey-Chambertin Premier Cru, Lavaut Saint-Jacques
OCC
6x75cl
IN BOND

£300-400

107 β
2012 Domaine de l'Arlot, Nuits-Saint-Georges Premier Cru, Clos des Forets Saint-Georges
OCC
6x75cl
IN BOND

£300-400

108 β
2012 Georges Noellat, Vosne-Romanee
OCC
3x150cl
IN BOND

£170-220

109 β
2013 Domaine Armand Rousseau, Chambertin-Clos de Beze Grand Cru
OCC (damaged)
6x75cl
IN BOND

£5,000-7,000

110 β
2013 Domaine Comte Georges de Vogue, Bonnes Mares Grand Cru
OWC
3x75cl
IN BOND

£600-800

111 β
2013 Joseph Drouhin, Bonnes Mares Grand Cru
OWC
6x75cl
IN BOND

£900-1,300

112 β
2013 Domaine Albert Bichot (Clos Frantin), Echezeaux Grand Cru, Clos Frantin
OWC
3x150cl
IN BOND

£380-480

113 β
2013 Domaine Drouhin Laroze, Bonnes Mares Grand Cru
OCC
6x75cl
IN BOND

£380-480

114 β
2013 Domaine Jacques Prieur, Corton Grand Cru, Les Bressandes
OCC
6x75cl
IN BOND

£340-440

115 β
2013 Domaine Arnoux-Lachaux, Vosne-Romanee, Les Hautes Maizieres
OCC (damaged)
6x150cl
IN BOND

£2,800-3,800

116 β
2013 Domaine Francois Lamarche, Vosne-Romanee Premier Cru, Aux Malconsorts
OCC
6x75cl
IN BOND

£500-700

117 β
2013 Domaine Comte Georges de Vogue, Chambolle-Musigny
OWC
3x75cl
IN BOND

£320-380

118 β
2013 Domaine Comte Georges de Vogue, Chambolle-Musigny
OWC
1x150cl
IN BOND

£200-300

119 β
2013 Domaine Marquis d'Angerville, Volnay Premier Cru, Fremiets
OCC
6x75cl
IN BOND

£260-360

120 β
2014 Domaine Armand Rousseau, Chambertin-Clos de Beze Grand Cru
OCC (damaged)
6x75cl
IN BOND

£7,000-9,000

121 β
2014 Pierre Damoy, Chambertin Grand Cru
OCC
6x75cl
IN BOND

£800-1,200

122 β
2014 Domaine Faiveley, Chambertin-Clos de Beze Grand Cru
OWC
6x75cl
IN BOND

£700-900

123 β
2014 Bouchard Pere et Fils, Bonnes Mares Grand Cru
OWC
3x75cl
IN BOND

£400-500

124 β
2014 Henri Boillot, Bonnes Mares Grand Cru
OWC
3x75cl
IN BOND

£400-500

125 β
2014 Benjamin Leroux, Mazoyeres-Chambertin Grand Cru
OCC
3x75cl
IN BOND

£380-480

126 β
2014 Benjamin Leroux, Mazoyeres-Chambertin Grand Cru
OCC
3x75cl
IN BOND

£380-480

127 β
2014 Domaine Jacques Prieur, Corton Grand Cru, Les Bressandes
OCC
6x75cl
IN BOND

£380-480

128 β
2014 Domaine Jacques Prieur, Corton Grand Cru, Les Bressandes
OCC
6x75cl
IN BOND

£380-480

129 β
2014 Chateau de la Tour, Clos de Vougeot Grand Cru, Vieilles Vignes
OCC
3x150cl
IN BOND

£360-460

130 β
2014 Chateau de la Tour, Clos de Vougeot Grand Cru, Vieilles Vignes
OCC
3x150cl
IN BOND

£200-460

131 β
2014 Chateau de la Tour, Clos de Vougeot Grand Cru, Vieilles Vignes
OCC
3x150cl
IN BOND

£300-460

132 β
2014 Domaine Comte Georges de Vogue, Chambolle-Musigny
OWC
1x150cl
IN BOND

£260-300

133 β
2015 Lucien Le Moine, Morey-Saint-Denis Premier Cru, Reserve MS
OCC
3x150cl
IN BOND

£260-360

134 β
2015 Joseph Drouhin, Beaune Premier Cru, Le Clos des Mouches Rouge
OWC
6x75cl
IN BOND

£260-350

135 β
2015 Domaine Jacques Prieur, Beaune Premier Cru, Clos de la Feguine Rouge
OCC
6x75cl
IN BOND

£260-360

136 β
2015 Domaine Jacques Prieur, Beaune Premier Cru, Clos de la Feguine Rouge
OCC
6x75cl
IN BOND

£260-360

137 β
2016 Joseph Faiveley, Clos Saint-Denis Grand Cru
OWC
6x75cl
IN BOND

£500-700

138 β
2016 Domaine Faiveley, Echezeaux Grand Cru, En Orveaux
OWC
6x75cl
IN BOND

£600-800

139 β
2016 Domaine Jacques Prieur, Volnay Premier Cru, Santenots
OCC
6x75cl
IN BOND

£280-360

140 β
2017 Henri Magnien, Ruchottes-Chambertin Grand Cru
OCC
6x75cl
IN BOND

£500-700

141 β
2017 Alain Hudelot-Noellat, Vosne-Romanee Premier Cru, Les Suchots
OWC
1x300cl
IN BOND

£400-600

142 β
2017 Jean-Marie Fourier, Chambolle-Musigny Premier Cru, Aux Echanges Vieille Vignes
OCC
6x75cl
IN BOND

£400-500

143 β
2018 Domaine Nicole Lamarche, La Grande Rue Grand Cru
OWC
6x75cl
IN BOND

£1,100-1,600

144 β
2018 Domaine Nicole Lamarche, Echezeaux Grand Cru
OWC
6x75cl
IN BOND

£500-700

145 β
2018 Domaine Drouhin Laroze, Bonnes Mares Grand Cru
OCC
6x75cl
IN BOND

£400-500



146 β
2018 Domaine Drouhin Laroze, Bonnes Mares Grand
Cru
OCC
6x75cl
IN BOND

£400-500

147 β
2018 Domaine des Lambrays, Clos des Lambrays
Grand Cru
OWC
6x75cl
IN BOND

£700-900

148 β
2018 Domaine Georges Roumier, Morey-Saint-Denis
Premier Cru, La Bussiere
OCC
6x75cl
IN BOND

£1,000-1,400

149 β
2018 Bouchard Pere et Fils, Vosne-Romanee Premier
Cru, Les Suchots
OCC
6x75cl
IN BOND

£800-1,200

150 β
2018 Bouchard Pere et Fils, Vosne-Romanee Premier
Cru, Les Beaux Monts
OCC
5x75cl
IN BOND
Packed in 1x6

£250-450

151 β
2018 Alain Hudelot-Noellat, Vosne-Romanee Premier
Cru, Les Beaux Monts
1x150cl
IN BOND

£140-240

152 β
2018 Alain Hudelot-Noellat, Vosne-Romanee Premier
Cru, Les Beaux Monts
OWC
1x300cl
IN BOND

£200-250

153 β
2018 Alain Hudelot-Noellat, Vosne-Romanee Premier
Cru, Les Suchots
OWC
1x300cl
IN BOND

£180-240

154 β
2018 Domaine Anne-Francoise Gros, Vosne-Romanee,
Aux Reas
OCC
6x75cl
IN BOND

£300-400

155 β
2018 Jean-Marie Fourier, Chambolle-Musigny
Premier Cru, Aux Echanges Vieille Vigne
OCC
3x150cl
IN BOND

£400-550

156 β
2018 Jean-Marie Fourrier, Chambolle-Musigny
Premier Cru, Aux Echanges Vieille Vigne
OCC
3x150cl
IN BOND

£400-550

157 β
2018 Domaine Francois Bertheau, Chambolle-Musigny
Premier Cru, Les Charmes
OCC
6x75cl
IN BOND

£360-460

158 β
2018 Domaine Faiveley, Chambolle-Musigny Premier
Cru, Les Fuees
OCC
6x75cl
IN BOND

£360-460

159 β
2018 Joseph Faiveley, Chambolle-Musigny Premier
Cru, Les Charmes
OCC
6x75cl
IN BOND

£360-460

160 β
2018 Domaine Francois Bertheau, Chambolle-Musigny
Premier Cru
OCC
6x75cl
IN BOND

£300-400

161 β
2018 Domaine Drouhin Laroze, Morey-Saint-Denis,
Tres Girard
OCC
6x75cl
IN BOND

£140-180

162 β
2018 Domaine Marquis d'Angerville, Volnay Premier
Cru, Champans
OCC
6x75cl
IN BOND

£300-400

163 β
2018 Domaine Marquis d'Angerville, Volnay Premier
Cru, Fremiets
OCC
6x75cl
IN BOND

£220-280

164 β
2018 Domaine Marquis d'Angerville, Volnay Premier
Cru, Fremiets
OCC
6x75cl
IN BOND

£220-280

165 β
2018 Domaine Marquis d'Angerville, Volnay Premier
Cru, Fremiets
OCC
6x75cl
IN BOND

£220-280



| | | | |
|---|---|--|---|
| 166 β 2019 Domaine Duroche, Charmes-Chambertin Grand Cru OCC 3x75cl IN BOND £650-850 | 171 β 2019 Domaine Anne Gros, Chambolle-Musigny, La Combe d'Orveau OCC 6x75cl IN BOND £400-600 | 176 β 2019 Henri Magnien, Gevrey-Chambertin Premier Cru, Estournelles-Saint-Jacques OCC 6x75cl IN BOND £280-380 | 181 β 2019 Joannes Violot-Guillemard, Pommard Premier Cru, Les Epenots OCC 6x75cl IN BOND £260-360 |
| 167 β 2019 Domaine Arlaud, Clos Saint-Denis Grand Cru OCC 3x75cl IN BOND £500-700 | 172 β 2019 Alain Hudelot-Noellat, Chambolle-Musigny Premier Cru, Les Charmes OCC 3x75cl IN BOND £300-400 | 177 β 2019 Henri Magnien, Gevrey-Chambertin Premier Cru, Estournelles-Saint-Jacques OCC 3x150cl IN BOND £280-380 | 182 β 2019 Domaine Launay Horiot, Pommard Premier Cru, Clos Blanc OCC 6x75cl IN BOND £220-280 |
| 168 β 2019 Domaine Anne Gros, Echezeaux Grand Cru, Les Loachausse 3x75cl IN BOND £380-550 | 173 β 2019 Domaine Taupenot-Merme, Chambolle-Musigny Premier Cru, La Combe d'Orveau OCC 6x75cl IN BOND £360-460 | 178 β 2019 Henri Magnien, Gevrey-Chambertin Premier Cru, Estournelles-Saint-Jacques OWC 1x300cl IN BOND £180-240 | 183 β 2019 Domaine Launay Horiot, Pommard Premier Cru, Les Chaponnieres OCC 6x75cl IN BOND £200-260 |
| 169 β 2019 Domaine Anne Gros, Clos de Vougeot Grand Cru, Le Grand Maupertui OCC 6x75cl IN BOND £650-850 | 174 β 2019 Henri Magnien, Gevrey-Chambertin Premier Cru, Lavaut Saint-Jacques OCC 6x75cl IN BOND £380-480 | 179 β 2019 Henri Magnien, Gevrey-Chambertin, Vieilles Vignes OCC 6x75cl IN BOND £140-180 | 184 β 2019 Domaine Launay Horiot, Pommard Premier Cru, Les Rugiens Bas OCC 6x75cl IN BOND £220-280 |
| 170 β 2019 Domaine Anne Gros, Clos de Vougeot Grand Cru, Le Grand Maupertui OCC 6x75cl IN BOND £650-850 | 175 β 2019 Michel Magnien, Gevrey-Chambertin Premier Cru, Les Cazetiers OCC 6x75cl IN BOND £360-360 | 180 β 2019 Cyprien Arlaud, Vosne-Romanee Premier Cru, Les Petits Monts OCC 6x75cl IN BOND £300-500 | 185 β 2019 Domaine Anne Gros, Bourgogne, Hautes Cotes de Nuits Rouge 3x75cl IN BOND £50-70 |

186 β
2020 Christophe Roumier, Charmes-Chambertin
Grand Cru, Les Mazoyeres
1x75cl
IN BOND

£700-900

187 β
2020 Alain Hudelot-Noellat, Romanee-Saint-Vivant
Grand Cru
OCC
3x75cl
IN BOND

£1,600-2,200

188 β
2020 Domaine Dujac, Bonnes Mares Grand Cru
OCC
1x75cl
IN BOND

£400-500

189 β
2020 Domaine Dujac, Clos de la Roche Grand Cru
OCC
3x75cl
IN BOND

£800-1,200

190 β
2020 Henri Magnien, Ruchottes-Chambertin Grand
Cru
OWC
3x75cl
IN BOND

£500-700

191 β
2020 Domaine des Lambrays, Clos des Lambrays
Grand Cru
OWC
3x75cl
IN BOND

£700-900

192 β
2020 Domaine des Lambrays, Clos des Lambrays
Grand Cru
OWC
3x75cl
IN BOND

£700-900

193 β
2020 Domaine Arlaud, Clos de la Roche Grand Cru
OCC
3x75cl
IN BOND

£400-500

194 β
2020 Armand Heitz, Echezeaux Grand Cru
3x75cl
IN BOND

£400-600

195 β
2020 Cyprien Arlaud, Echezeaux Grand Cru
OCC
3x75cl
IN BOND

£300-400



196 β
2020 Armand Heitz, Mazis-Chambertin Grand Cru
OCC
3x75cl
IN BOND

£400-600

197 β
2020 Domaine Taupenot-Merme, Mazoyeres-Chambertin Grand Cru
OCC
6x75cl
IN BOND

£700-900

198 β
2020 Domaine Taupenot-Merme, Charmes-Chambertin Grand Cru
OCC
6x75cl
IN BOND

£500-700

199 β
2020 Domaine Taupenot-Merme, Corton Grand Cru, Le Rognet et Corton
OCC
6x75cl
IN BOND

£500-700

200 β
2020 Domaine Arlaud, Charmes-Chambertin Grand Cru
OCC
6x75cl
IN BOND

£400-600

201 β
2020 Domaine Georges Roumier, Chambolle-Musigny Premier Cru, Les Cras
OCC
3x75cl
IN BOND

£1,300-1,700

202 β
2020 Domaine Georges Roumier, Chambolle-Musigny
OCC
3x75cl
IN BOND

£500-700

203 β
2020 Domaine Dujac, Vosne-Romanee Premier Cru, Les Beaux Monts
OCC
3x75cl
IN BOND

£500-700

204 β
2020 Alain Hudelot-Noellat, Vosne-Romanee Premier Cru, Les Suchots
OCC
3x75cl
IN BOND

Packed in 1x6

£400-500

205 β
2020 Alain Hudelot-Noellat, Vougeot Premier Cru, Les Petits Vougeots
3x75cl
IN BOND

£220-320



206 β
2020 Alain Hudelot-Noellat, Chambolle-Musigny
Premier Cru, Les Charmes
3x75cl
IN BOND

£280-380

207 β
2020 Alain Hudelot-Noellat, Chambolle-Musigny
OCC
6x75cl
IN BOND

£260-340

208 β
2020 Alain Hudelot-Noellat, Nuits-Saint-Georges,
Au Bas de Combe
OCC
6x75cl
IN BOND

£200-300

209 β
2020 Alain Hudelot-Noellat, Bourgogne, Rouge
OCC
6x75cl
IN BOND

£120-160

210 β
2020 Alain Hudelot-Noellat, Bourgogne, Rouge
OCC
6x75cl
IN BOND

£120-160

211 β
2020 Domaine Sylvain Cathiard, Vosne-Romanee
3x75cl
IN BOND

£300-400

212 β
2020 Domaine Sylvain Cathiard, Gevrey-Chambertin
3x75cl
IN BOND

£240-320

213 β
2020 Domaine Sylvain Cathiard, Bourgogne,
Hautes Cotes de Nuits Aux Chaumes
3x75cl
IN BOND

£80-120

214 β
2020 Domaine Sylvain Cathiard, Bourgogne,
Hautes Cotes de Nuits Les Dames Huguette
3x75cl
IN BOND

£80-120

215 β
2020 Cyprien Arlaud, Vosne-Romanee Premier Cru,
Les Petits Monts
OCC
6x75cl
IN BOND

£300-400

216 β
2020 Domaine Arlaud, Gevrey-Chambertin Premier
Cru, Aux Combottes
3x75cl
IN BOND

£200-280

217 β
2020 Domaine Arlaud, Morey-Saint-Denis Premier
Cru, Les Ruchots
OCC
3x75cl
IN BOND

£140-180

218 β
2020 Domaine Arlaud, Morey-Saint-Denis Premier
Cru, Aux Cheseaux
OCC
3x150cl
IN BOND

£200-300

219 β
2020 Domaine Arlaud, Chambolle-Musigny
OCC
6x75cl
IN BOND

£200-280

220 β
2020 Domaine Arlaud, Gevrey-Chambertin
OCC
6x75cl
IN BOND

£180-220

221 β
2020 Domaine Arlaud, Morey-Saint-Denis
OCC
6x75cl
IN BOND

£160-200

222 β
2020 Domaine des Lambrays, Morey-Saint-Denis
Premier Cru, Loups
6x75cl
IN BOND

£360-460

223 β
2020 Domaine des Lambrays, Morey-Saint-Denis
6x75cl
IN BOND

£240-320

224 β
2020 Domaine Taupenot-Merme, Gevrey-Chambertin
Premier Cru, Bel Air
OCC
6x75cl
IN BOND

£360-460

225 β
2020 Domaine Taupenot-Merme, Chambolle-
Musigny Premier Cru, La Combe d'Orveau
OCC
6x75cl
IN BOND

£360-460

226 β
2020 Domaine Taupenot-Merme, Morey-Saint-Denis
Premier Cru, La Riotte
OCC
6x75cl
IN BOND

£320-420

227 β
2020 Henri Magnien, Gevrey-Chambertin Premier
Cru, Estournelles-Saint-Jacques
OCC
6x75cl
IN BOND

£320-420

228 β
2020 Henri Magnien, Gevrey-Chambertin Premier
Cru, Les Cazetiers
OCC
6x75cl
IN BOND

£320-420

229 β
2020 Henri Magnien, Gevrey-Chambertin Premier
Cru, Champeaux
OCC
6x75cl
IN BOND

£260-320

230 β
2020 Domaine Henri Gouges, Nuits-Saint-Georges
Premier Cru, Les Vaucrains
OCC
3x75cl
IN BOND

£180-240

231 β
2020 Domaine Duroche, Gevrey-Chambertin
OCC
6x75cl
IN BOND

£220-320

232 β
2020 Henri Magnien, Gevrey-Chambertin,
Vieilles Vignes
OCC
6x75cl
IN BOND

£180-220

233 β
2020 Labet Pere et Fils, Gevrey-Chambertin,
Vieilles Vignes
OCC
6x75cl
IN BOND

£180-220

234 β
2020 Domaine Taupenot-Merme, Gevrey-Chambertin
OCC
6x75cl
IN BOND

£150-200

235 β
2020 Domaine Henri Magnien, Aloxe-Corton Premier
Cru, La Coutiere
OCC
6x75cl
IN BOND

£150-200

236 β
2020 Georges Noellat, Cote de Nuits Villages
OCC
12x75cl
IN BOND

£200-300



237 β
2020 Domaine Arlaud, Bourgogne, Roncevie
OCC (damaged)
12x75cl
IN BOND
Packed in 2x6

£160-240

238 (NO LOT)

239 β
2021 Domaine Dujac, Charmes-Chambertin Grand
Cru
3x75cl
IN BOND

£700-900

240 β
2021 Domaine Dujac, Clos de la Roche Grand Cru
OCC
3x75cl
IN BOND

£700-900

241 β
2021 Domaine Arlaud, Bonnes Mares Grand Cru
1x150cl
IN BOND

£400-600

242 β
2021 Domaine Arlaud, Clos de la Roche Grand Cru
OCC
3x75cl
IN BOND

£320-420

243 β
2021 Domaine Arlaud, Clos Saint-Denis Grand Cru
OCC
3x75cl
IN BOND

£360-460

244 β
2021 Charles van Canneyt, Griotte-Chambertin Grand
Cru
3x75cl
IN BOND

£300-400

245 β
2021 Domaine Dujac, Vosne-Romanee Premier Cru,
Les Beaux Monts
1x75cl
IN BOND

£200-250

246 β
2021 Domaine Dujac, Gevrey-Chambertin Premier
Cru, Aux Combottes
1x75cl
IN BOND

£150-200

247 β
2021 Domaine Dujac, Morey-Saint-Denis
OCC
3x75cl
IN BOND

£170-220

248 β
2021 Maxime Cheurlin Noellat, Chambolle-Musigny
Premier Cru, Les Feusselottes
OCC
6x75cl
IN BOND

£500-600

249 β
2021 Maxime Cheurlin Noellat, Chambolle-Musigny
OCC
6x75cl
IN BOND

£300-380

250 β
2021 Charles van Canneyt, Morey-Saint-Denis Premier
Cru, Les Sorbes
OCC
6x75cl
IN BOND

£260-320

251 β
2021 Domaine des Lambrays, Morey-Saint-Denis
6x75cl
IN BOND

£240-280

252 β
2021 Domaine des Lambrays, Morey-Saint-Denis
Premier Cru, Loups
6x75cl
IN BOND

£340-400

253 β
2021 Chateau Albert Bichot (Gris), Nuits-Saint-
Georges Premier Cru, Monopole
OCC
6x75cl
IN BOND

£180-240

254 β
2021 Georges Noellat, Nuits-Saint-Georges Premier
Cru, Aux Boudots
3x75cl
IN BOND

£180-240

255 β
2021 Domaine Henri Magnien, Aloxe-Corton Premier
Cru, La Coutiere
OCC
6x75cl
IN BOND

£180-220

256 β
2021 Georges Noellat, Vosne-Romanee
OCC
6x75cl
IN BOND

£300-350

257 β
2021 Domaine Arlaud, Gevrey-Chambertin
OCC
6x75cl
IN BOND

£180-240

258 β
2021 Domaine Arlaud, Chambolle-Musigny
OCC
6x75cl
IN BOND

£180-240

259 β
2021 Domaine Arlaud, Morey-Saint-Denis
OCC
6x75cl
IN BOND

£160-200

260 β
2021 Domaine Sylvain Cathiard, Bourgogne,
Hautes Cotes de Nuits Les Dames Huguette
OCC
6x75cl
IN BOND

£200-260

261 β
2021 Domaine Sylvain Cathiard, Bourgogne,
Hautes Cotes de Nuits Aux Chaumes
OCC
6x75cl
IN BOND

£180-220

262 β
2021 Georges Noellat, Cote de Nuits Villages
OCC
6x75cl
IN BOND

£100-140

263 β
2021 Georges Noellat, Bourgogne, Rouge
OCC (damaged)
6x75cl
IN BOND

£80-120

264 β
2021 Domaine Arlaud, Bourgogne, Roncevie
OCC
6x75cl
IN BOND

£70-100

BEAUJOLAIS

265 β
2016 Domaine Labruyere, Clos, Moulin-a-Vent
OCC
6x75cl
IN BOND

£80-120

266 β
2016 Domaine Labruyere, Clos, Moulin-a-Vent
OCC
6x75cl
IN BOND

£80-120



RHONE

267 β

2009 Domaine de la Chapelle, Hermitage,
La Chapelle Rouge

OWC

6x75cl

IN BOND

£460-650

268 β

2009 Domaine de la Chapelle, Hermitage,
La Chapelle Rouge

OWC

6x75cl

IN BOND

£460-650

269 β

2016 Tardieu-Laurent, Cote Rotie

OCC

12x75cl

IN BOND

£340-440

270 β

2016 Tardieu-Laurent, Hermitage, Rouge

OCC

12x75cl

IN BOND

£300-400



ITALY

- 271 β

2013 Produttori del Barbaresco, Barbaresco, Muncagota Riserva

OCC

6x75cl

IN BOND

£170-220
- 272 β

2013 Produttori del Barbaresco, Barbaresco, Pora Riserva

OCC

6x75cl

IN BOND

£170-220
- 273 β

2013 Produttori del Barbaresco, Barbaresco, Rio Sordo Riserva

OCC

6x75cl

IN BOND

£170-220
- 274 β

2013 Produttori del Barbaresco, Assortment Case

OWC

9x75cl

IN BOND

1 x Barbaresco DOCG, Reserva Montestefano

1 x Barbaresco DOCG, Reserva Rabaja

1 x Barbaresco DOCG, Reserva Ovello

1 x Barbaresco DOCG, Reserva Asili

1 x Barbaresco DOCG, Reserva Montefico

1 x Barbaresco DOCG, Reserva Paje

1 x Barbaresco DOCG, Reserva Muncagota

1 x Barbaresco DOCG, Reserva Rio Sordo

1 x Barbaresco DOCG, Reserva Pora

£300-400

- 275 β

2015 Giacomo Conterno, Barbera d’Alba, Francia

OCC

12x75cl

IN BOND

£340-420
- 276 β

2016 Giacomo Conterno, Barbera d’Alba, Francia

OCC

12x75cl

IN BOND

£340-420
- 277 β

2016 Produttori del Barbaresco, Barbaresco

OCC

6x75cl

IN BOND

£300-400
- 278 β

2017 Giacomo Conterno, Barbera d’Alba, Francia

OCC

12x75cl

IN BOND

£340-420
- 279 β

2019 Elvio Cogno, Barolo, Ravera

OWC

6x75cl

IN BOND

£170-220
- 280 β

2014 Tenuta di Biserno, Lodovico, Toscana

OWC

6x75cl

IN BOND

£380-480



281 β
2014 Tenuta di Biserno, Lodovico, Toscana
OWC
6x75cl
IN BOND

£380-480

282 β
2016 Tignanello, Toscana
OCC
6x75cl
IN BOND

£500-600

283 β
2016 Sesti (Castello di Argiano), Brunello di
Montalcino, Riserva Phenomena
OWC
3x150cl
IN BOND

£320-380

284 β
2018 Tenuta di Trinoro, Palazzi, Toscana IGT
OWC
6x75cl
IN BOND

£400-500

285 β
2018 Tenuta di Trinoro, Toscana IGT
OWC
3x150cl
IN BOND

£400-500



GERMAN

286 β
2016 Markus Molitor, Bernkasteler Badstube Riesling
Auslese 3* Goldkapsel, Mosel
OCC
12x37.5cl
IN BOND
Packed in 2x6

£280-360

287 β
2016 Markus Molitor, Bernkasteler Badstube Riesling
Auslese 3* Goldkapsel, Mosel
OCC
12x37.5cl
IN BOND
Packed in 2x6

£280-360

288 β
2016 Markus Molitor, Wehlener Sonnenuhr Riesling
Auslese 3* Goldkapsel, Mosel
OCC
6x75cl
IN BOND

£240-320

289 β
2016 Markus Molitor, Wehlener Sonnenuhr Riesling
Auslese 3* Goldkapsel, Mosel
OCC
6x75cl
IN BOND

£240-320

290 β
2016 Markus Molitor, Erdener Treppchen Riesling
Auslese 3* Gold Capsule, Mosel
OCC
12x37.5cl
IN BOND
Packed in 2x6

£240-320

291 β
2016 Markus Molitor, Erdener Treppchen Riesling
Auslese 3* Gold Capsule, Mosel
OCC
12x37.5cl
IN BOND
Packed in 2x6

£240-320

292 β
2016 Markus Molitor, Zeltinger Schlossberg Riesling
Spatlese Goldkapsel, Mosel
OCC
12x75cl
IN BOND
Packed in 2x6

£240-300

293 β
2016 Markus Molitor, Zeltinger Sonnenuhr Riesling
Spatlese White Capsule, Mosel
OCC
12x75cl
IN BOND
Packed in 2x6

£280-360

294 β
2016 Markus Molitor, Kinheimer Rosenberg Riesling
Spatlese (Green Capsule), Mosel
OCC
12x75cl
IN BOND
Packed in 2x6

£140-200

295 β
2020 Furst, Burgstadter Berg Spatburgunder, Franken
OCC
6x75cl
IN BOND

£140-180

296 β
2020 Furst, Klingenberger Spatburgunder, Franken
OCC
6x75cl
IN BOND

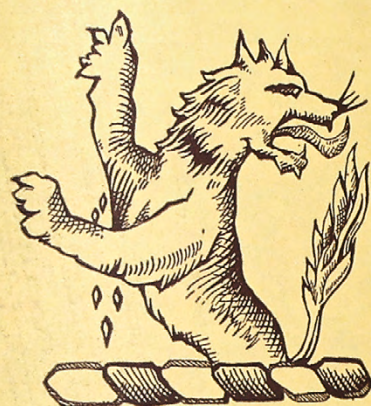
297 β
2020 Furst, Spatburgunder Tradition, Franken
OCC
6x75cl
IN BOND

£70-100

298 β
2021 Furst, Riesling Pur Mineral, Franken
OCC
6x75cl
IN BOND

£60-80

DISCOVER THE
VALUE OF YOUR
FINE WINE &
SPIRITS AT
OUR MONTHLY
AUCTIONS



Château
Léoville Poyferre
Saint Julien

25 June
Fine Wine, Vintage Port & Spirits

29 July
Fine Wine, Champagne, Vintage Port & Spirits

27 August
Fine Wine, Champagne, Vintage Port & Spirits

1 October
Fine Wine, Champagne, Vintage Port & Spirits



FOR A FREE AUCTION VALUATION
Contact: wine@dreweatts.com 01635 553 553

dreweatts.com
NEWBURY | LONDON

DREWEATTS
EST. 1759

COMING UP AT DREWEATTS & FORUM AUCTIONS

19 June | Dreweatts
Art & Interiors

19 June | Forum Auctions
A Sixth Selection of 16th and 17th Century English Books from the Fox
Pointe Manor Library

24 June | Dreweatts
A Private Collection: A Grand Tour through Bordeaux and Burgundy

24 & 25 June | Dreweatts
Fine Furniture, Sculpture, Carpets, Ceramics and Works of Art

25 June | Dreweatts
Fine Wine, Champagne, Vintage Port and Spirits

2 July | Dreweatts
Tales from the Art Crypt:
Works from The Richard Feigen Collection

2 July | Forum Auctions
Jack Shirreff at 107 Workshop: The Collection of a Master Printer

8 July | Dreweatts
Japanese Prints: Art Of The Woodblock

10 July | Dreweatts
Modern and Contemporary Art

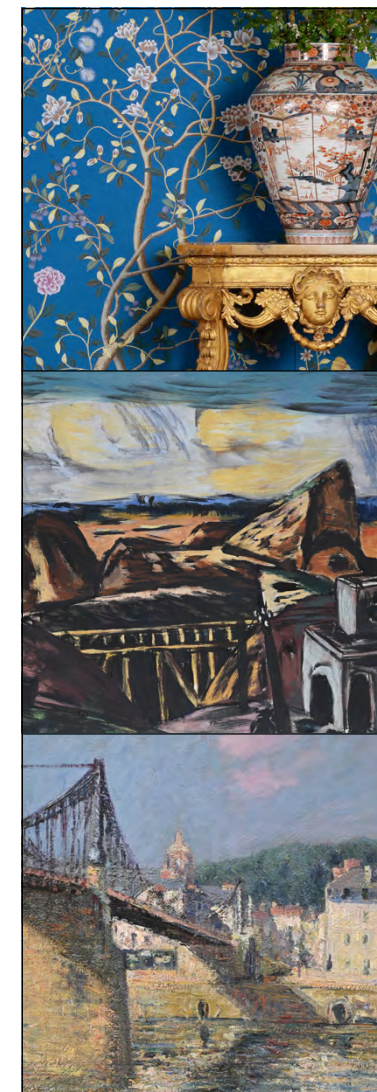
29 July | Dreweatts
Fine Wine, Champagne, Vintage Port and Spirits

30 July | Dreweatts
Art & Interiors

6 August | Dreweatts
Silver, Watches and Luxury Accessories

13 August | Dreweatts
Single Owner Sale

28 August | Dreweatts
Art & Interiors



INVITING ENTRIES

If you have an item you would like valued
for sale at auction, we would be delighted
to provide you with a free, no obligation
estimate. Contact us to arrange an in-person
appointment or visit our website to see how
to submit the information online.

dreweatts.com
info@dreweatts.com

NEWBURY
01635 553 553
LONDON
020 7839 8880

forumauctions.co.uk
info@forumauctions.co.uk

LONDON
020 7871 2640

DREWEATTS
EST. 1759

Forum
Auctions

Please see Conditions of Business and Conditions of Sale on the following pages.

Dreweatts & Dreweatts 1759 are trading names of Dreweatts 1759 Ltd. Dreweatts 1759 Ltd is registered in England, company number: 10758982, registered office: C/O Bishop Fleming LLP, 10 Temple Back, Bristol, BS1 6FL.

IMPORTANT NOTICES FOR BUYERS OF WINE AND SPIRITS

BUYING AT DREWEATTS

There are several ways you can bid at a Dreweatts auction; in person, by leaving a commission or absentee bid, on the telephone where available and live via the internet – please make arrangements before the sale. This notice applies only to a person who wishes to bid in person, or by leaving a commission or absentee bid, at a Dreweatts pub-lic auction. For bidding at an online auction or for online bidding at a public auction please see our Online Auction Terms published on our website at www.dreweatts.com.

BIDDING IN PERSON

If intending to buy, you are required to register your name and details at reception prior to the commencement of the auction. You will be required to provide a proof of identity and address to register for bidding. You will then be allocated a bidding number, which you use when bidding for an item.

COMMISSION BIDS

Dreweatts will execute bids on your behalf if you are unable to attend the sale. Commission or absentee bids are accepted either directly at reception, or can be sent by post, fax, email, telephone or via the website: www.dreweatts.com.

Dreweatts will add these bids to the auctioneers’ sale book and will undertake to pur-chase the lots on your behalf as cheaply as allowed by other bids and reserves. If two buyers submit identical commission bids Dreweatts may prefer the first bid received.

Dreweatts does not accept liability for failing to execute commission bids, or for any er-rors or omissions.

CHARGES

All purchases are subject to a buyer’s premium, which is 20% of the hammer price (24% including VAT). Symbol β in the catalogue indicates that the lot is under Bond and, if released for delivery to a UK address, will additionally incur UK duty and 20% VAT charged on both duty and hammer price.

IN BOND LOTS

Bidding will be at duty paid prices other than for those lots marked ‘IN BOND/β’. Dreweatts Wine Department will contact buyers who have purchased wine ‘IN BOND/β’ to ascertain if the wine is to be removed from bond or transferred to a bonded account. Buyers of wine to be removed from bond will be invoiced duty and vat on the hammer price at the prevailing rates. From 1 February 2025 the rate of duty is determined by the ABV and charged accordingly. VAT will also be added to the buyer’s premium on lots purchased whether or not they remain ‘in bond’.

DUTY RATES EFFECTIVE FROM 1 FEBRUARY 2025

From 1 February 2025 UK alcohol duty rates are changing .

For guidance, below is the duty per bottle/ABV table.

| ABV | 1 x 75cl Bottle | ABV | 1 x 75cl Bottle |
|-------|-----------------|-------|-----------------|
| 7% | £1.35 | 13.5% | £2.99 |
| 7.5% | £1.44 | 14% | £3.10 |
| 8% | £1.54 | 14.5% | £3.21 |
| 8.5% | £1.88 | 15% | £3.32 |
| 9% | £1.99 | 15.5% | £3.43 |
| 9.5% | £2.10 | 16% | £3.54 |
| 10% | £2.22 | 16.5% | £3.66 |
| 10.5% | £2.33 | 17% | £3.77 |
| 11% | £2.44 | 17.5% | £3.88 |
| 11.5% | £2.55 | 18% | £3.99 |
| 12% | £2.66 | 18.5% | £4.10 |
| 12.5% | £2.77 | 19% | £4.21 |
| 13% | £2.88 | 19.5% | £4.32 |
| 13.5% | £2.99 | 20% | £4.43 |

(Note, in this table we have used 0.5% ABV increments, but every additional 0.1% ABV will incur additional duty.)

VIEWING / CONDITION

All wine and spirits are stored off-site. Images of lots for the purposes of condition can be viewed online and should be referred to prior to bidding. It is the responsibility of po-tential buyers to obtain any additional information (if any) on lots on which they intend to bid. Catalogue descriptions are for reference as to the contents of a lot and should not be relied upon as a statement as to the condition of a lot. Please note that Dreweatts are unable to give verbal condition reports for any lot, and all condition re-ports will be given in writing via our website.

No returns will be accepted. Each lot shall be at the Purchaser's risk from the conclusion of the auction until payment and collection are made.

DESCRIPTION OF THE LOTS

• Descriptions, ullages and conditions of wines are described as correctly as pos-sible at the time of the publication of the catalogue. Purchasers of old wines must as-sure themselves regarding ullage levels, labels etc. No returns will be accepted.

• Vintages: Where a vintage cannot be ascertained from a label, it may still be noted based on cork branding, cellar records or other corroborating evidence including other lots from the same source.

• Bottle sizes: are 75cl unless otherwise stated in the lot description.

ABBREVIATIONS USED IN THE CATALOGUE

OWC: Original Wooden Case

WC: Wooden Case (non-original)

OCC: Original Cardboard Case

ABBREVIATIONS USED IN RELATION TO THE LEVEL OF WINES FOR BORDEAUX STYLE BOTTLES:

Into Neck (IN)

Base of Neck (BN)

Very Top Shoulder (VTS)

Top Shoulder (TS)

High Shoulder (HS)

Mid Shoulder (MS)

Low Shoulder (LS)

Bottom Shoulder (BS)

PAYMENT

Payment will be accepted, if you are a successful bidder, by debit card issued in the name of the Buyer by a UK bank and registered to a UK billing address; by all major UK is-sued credit cards issued in the name of the Buyer and registered to a UK billing address with the exception of Diners Club; by bank transfer direct into our bank account, Bank Details: NatWest, 30 Market Place, Newbury, Berkshire RG14 5AG. Account Name: Dreweatts 1759 Ltd. A/C: 62412949, Sort Code: 60-15-07, BIC: NWBKGB2L, IBAN: GB21NWBK60150762412949. The name of the bank account holder should match the name of the buyer. First time buyers who are not present at the saleroom are requested to pay by bank transfer.

STORAGE

Wine and spirits offered for sale via Dreweatts are stored at LCB Eton Park (previously known as Vinotheque) in Burton-on-Trent:

Dreweatts

c/o LCB Eton Park

Derby Road

Derby Turn

Burton-on-Trent

DE14 1RY

Storage charges will apply for any lots not collected within 10 days of the sale: £2.50 per lot fixed charge and £0.20 per week or part week thereafter. Please note for large con-signments there may be additional charges. These charges will be the sole liability of the purchaser and will be billed directly to them by Dreweatts. To arrange long term wine storage with Dreweatts, please contact the Dreweatts Wine Department.

COLLECTION

Collection is possible from Newbury or LCB Eton Park in Burton-on-Trent. Please do not arrange to collect items without having paid online or by bank transfer beforehand.

Collection from LCB Eton Park, Burton-on-Trent

Collections can be made 5 days following the sale, Monday to Friday 9am to 4.30pm. Written notice is required 72 hours in advance of a collection, and all collections are subject to payment having been received by Dreweatts. Please note that LCB Eton Park are not able to deal with customers directly so all enquiries need to be referred to the Dreweatts Wine Department.

Collection from Dreweatts, Hambridge Lane

Collection from our Hambridge Lane warehouse is available 7-10 days following the sale and subject to a £5 per lot charge. Collection can be made Monday to Friday 9am-5pm.

DELIVERY AND TRANSFER

Lots can be delivered to buyers via LCB Eton Park’s delivery service, charged at a mini-mum of £16 + VAT for up to 9 litres. Warehouse transfers can also be made within the LCB network and to all other UK warehouses. If you are planning on shipping wine to the EU, we kindly request you to make your own shipping/courier arrangements. For all oth-er international shipments, please do not hesitate to contact the Wine Department.

Delivery arrangements should be confirmed when settling your account. Please contact Dreweatts Wine Department to obtain a quotation.

VAT LIABILITIES FOR OVERSEAS BUYERS

Private overseas buyers can only receive goods free of VAT or have

the VAT amount re-funded if Dreweatts acts as exporter in relation to the sale, the goods are exported with-in 3 months of the sale and Dreweatts is in possession of adequate export documents. The VAT refunds are available for transactions exceeding £2,500. If you arrange for the goods to be picked up/delivered to you directly we will charge UK VAT at the appropriate rate and no refund will be available. Please note, buyers are responsible for completing the importation procedures as well as the payment of any relevant duty/VAT payable on importation into the destination country. Where the purchase has been made in the business or trading name, VAT refund will be available on proof of export provided with-in 3 months of the sale.

Dreweatts Wine Department

Hugo Spencer | Mark Robertson | Violette Jongbloed

Direct tel: + 44 (0) 1635 553 594

Main tel: + 44 (0) 1635 553 553

E-mail: wine@dreweatts.com

FURTHER INFORMATION

The colours printed in this catalogue are not necessarily a true reflection of the actual item. All weights and measures given in the catalogue should be regarded as approxi-mate.

VALUATION SERVICES

Dreweatts provides a range of confidential and professional valuation services to private clients, solicitors, executors, estate managers, trustees and other professional partners. These services include auction valuations, insurance valuations, probate valuations, private treaty valuations, valuations for family division or for tax purposes. For more in-formation, please see our website: www.dreweatts.com

INFORMATION FOR BUYERS AT PUBLIC AUCTIONS

1. INTRODUCTION. The following notes are intended to assist Bidders and Buyers, particularly those inexperienced or new to our salerooms. All of our auctions and sales are conducted on our printed Auction Terms and Conditions, including these Conditions of Sale and Business, which are readily available for inspection and normally accompany catalogues. Our staff will be happy to help you if there is anything you do not fully understand.

Any particular auction and/or any particular lot in an auction may be subject to different or additional terms which will be published in our auction catalogue. All auctions and sales of wines and spirits, jewellery, watches and clocks are subject to the special terms set out in the relevant Notices in relation to those items published in our auction catalogue and, in the event of any conflict or inconsistency, those special terms prevail over any other terms in our Auction Terms and Conditions. By bidding at the auction, you agree to be bound by these terms.

2. AGENCY. As auctioneers we usually act as agents for the seller whose identity, for reasons of confidentiality, is not normally disclosed. Accordingly if you buy at auction your contract for the item or items purchased is with the seller and not with us as the auctioneer.

3. ESTIMATES. Estimates are designed to help buyers gauge what sort of sum might be involved for the purchase of a particular lot. Estimates may change and should not be thought of as the sale price. The lower estimate may represent the reserve price and certainly will not be below it. Estimates do not include the Buyer’s Premium or VAT (where chargeable). Estimates are prepared some time before the sale and may be altered by announcement before the sale. They are in no sense definitive.

4. BUYER’S PREMIUM. The Conditions of Sale forming part of our Auction Terms and Conditions require the buyer to pay a buyer’s premium on the hammer price of each lot purchased. The buyer’s premium is charged per lot at 20% of the hammer price (24% including VAT) VAT at the prevailing rate of 20% is added to buyer’s premium and additional charges as defined below.

5. VAT. A theta symbol (θ) indicates that the lot is a zero rated item and therefore not subject to VAT on the buyer’s premium. This applies to bound books (manuscripts and printed), unframed maps and albums. A dagger symbol (†) indicates that VAT is payable by the purchaser at the standard rate (presently 20%) on the hammer price as well as being an element in the buyer’s premium. This imposition of VAT is likely to be because the seller is registered for VAT within the United Kingdom and is not operating the Dealers Margin Scheme. A double dagger (‡) indicates that the lot is being sold whilst subject to temporary importation and that import VAT at the reduced rate (currently 5%) calculated on the hammer price is due. (Q) Indicates that the lot has been imported from outside the UK and that import VAT at the standard rate (currently 20%) calculated on the hammer price (inclusive of any applicable duty) is due. Lots offered subject to temporary importation († or Q) require relevant customs procedure to be completed prior to the

property leaving Dreweatts’ premises or being exported. Dreweatts will issue the instruction to a customs broker or shipper upon receipt of full payment for the lots. The import VAT charged for lots with symbols † or Q can be refunded if Dreweatts is instructed to re-export the property or if the VAT liability is transferred to another Temporary Admission authorisation. Lots which appear without the above symbols indicate that no VAT is payable on the hammer price; this is because such lots are sold using the Auctioneers Margin Scheme and it should be noted that the VAT included within the buyer’s premium is not recoverable as input tax.

6. DESCRIPTION AND CONDITION. Condition reports are provided on our website or upon request. The absence of a report does not imply that a lot is without imperfections. The detail in a report will reflect the estimated value of the lot. Large numbers of such requests received shortly before the sale may mean that reports cannot be provided for all lots. Members of staff are not trained restorers or conservators and, particularly for higher value lots, you should obtain an opinion from such a professional. Dreweatts is not liable for damage to gilded picture frames, plaster picture frames or picture frame glass; if a lot is or becomes dangerous, we may dispose of it without notice to bidders in advance in any manner we see fit and will be under no liability for doing so. We recommend that you always view a lot in person.

We are dependent on information provided by the seller about a lot and whilst we may inspect lots and act reasonably in taking a general view about them we are normally unable to carry out a detailed examination and frequently no examination of lots in order to ascertain their condition in the way in which it would be wise for a buyer to do. Intending buyers have ample opportunity for inspection of goods and, therefore, accept responsibility for inspecting and investigating lots in which they may be interested and the corresponding risk should they not do so. Please note carefully the exclusion of liability for the condition of lots contained in the Conditions of Sale. Neither the seller nor we, as the auctioneers, accept any responsibility for their condition. In particular, mechanical objects of any age are not guaranteed to be in working order. However, in so far as we have examined the goods and make a representation about their condition in the auction catalogue, we shall be liable for any defect which is not reflected in that representation and which that examination ought to have revealed to the auctioneer but which would not have been revealed to the buyer had the buyer examined the goods. Additionally, in specified circumstances lots misdescribed because they are ‘deliberate forgeries’ may be returned and repayment made. There is a 3 week time limit. (The expression ‘deliberate forgery’ is defined in our Conditions of Sale).

7. ELECTRICAL GOODS. These are sold as ‘antiques’ only and if bought for use must be checked over for compliance with safety regulations by a qualified electrician before use.

8. EXPORT OF GOODS. Buyers intending to export goods should ascertain (a) whether an export licence is required and (b) whether there is any specific prohibition on importing goods of that character because, e.g. they may contain prohibited materials such as ivory. Ask us if you need help.

Private overseas buyers can only receive goods free of VAT or have the VAT amount refunded if Dreweatts acts as exporter in relation to the sale, the goods are exported within 3 months of the sale and Dreweatts is in possession of adequate export documents. The VAT refunds are available for transactions exceeding £2,500. If you arrange for the goods to be picked up/delivered to you directly we will charge UK VAT at the appropriate rate and no refund will be available. Please note, buyers are responsible for completing the importation procedures as well as the payment of any relevant duty/VAT payable on importation into the destination country.

Where the purchase has been made in the business or trading name, VAT refund will be available on proof of export provided within 3 months of the sale.

9. BIDDING. Bidders will be required to register before the sale commences and lots will be invoiced to the name and address on the sale registration form. Bidders are required to provide a government issued identity document and a proof of address. Please enquire in advance about our arrangements for telephone bidding.

10. COMMISSION BIDDING. Commission bids may be left with the auctioneers indicating the maximum amount to be bid excluding buyer's premium. Dreweatts will add these bids to the auctioneers' sale book and they will be executed as cheaply as possible having regard to the reserve (if any) and competing bids. If two buyers submit identical commission bids the auctioneers may prefer the first bid received. Please enquire in advance about our arrangements for the leaving of commission bids by telephone or fax. Dreweatts does not accept liability for failing to execute commission bids, or for any errors or omissions.

11. METHODS OF PAYMENT. Payment will be accepted, if you are a successful bidder, by debit card issued in the name of the Buyer by a UK bank and registered to a UK billing address; by all major UK issued

credit cards issued in the name of the Buyer and registered to a UK billing address with the exception of Diners Club; by bank transfer direct into our bank account; Bank Details: NatWest; 30 Market Place, Newbury, Berkshire RG14 5AG. Account Name: Dreweatts 1759 Ltd. A/C: 62412949, Sort Code: 60-15-07, BIC: NWBKGB2L, IBAN: GB21NWBK60150762412949. The name of the bank account holder should match the name of the buyer. First time buyers who are not present at the saleroom are requested to pay by bank transfer.

12. COLLECTION AND STORAGE. Please note what the Conditions of Sale state about collection and storage. It is important that goods are paid for and collected promptly. Any delay may involve the buyer in paying storage charges.

13. λ ARTIST'S RESALE RIGHT (DROIT DE SUITE) ROYALTY CHARGES. Under Artist's Resale Right (ARR) UK art market professionals (including, but not limited to, auctioneers, art dealers and galleries) are required to collect a royalty for works of art produced by qualifying artists each time a work is resold during the artist's lifetime and for a period up to 70 years following the artist's death. This payment is only applicable to qualifying works of art when the hammer price reaches or exceeds £1,000. The charge is calculated on the portions of the hammer price according to the following rate bands:

| Royalty Rate | Portion of the hammer |
|--------------|----------------------------------|
| 4% | up to £50,000 |
| 3% | between £50,000.01 and £200,000 |
| 1% | between £200,000.01 and £350,000 |
| 0.5% | between £350,000.01 and £500,000 |
| 0.25% | in excess of £500,000 |

The royalty charge is capped at £12,500 per artwork. All royalty charges are passed on, no handling costs or additional fees with respect to these charges will be retained by Dreweatts. The ARR charge is VAT exempt. All items in this catalogue that are marked with λ are potentially qualifying items. The charge will be added to the buyer's invoice and must be paid before items can be released to the buyer.

TERMS OF CONSIGNMENT FOR SELLERS IN PUBLIC AUCTIONS

The sale of goods at our public auctions and a seller's relationship with us are governed by our Auction Terms and Conditions including these Terms of Consignment for Sellers in Public Auctions and our Conditions of Sale for Public Auctions. Any particular auction and/or any particular lot in an auction may be subject to different or additional terms which will be published in our auction catalogue or separately announced prior to the auction. All auctions and sales of wines and spirits, jewellery, watches and clocks are subject to the special terms set out in the relevant Notices in relation to those items published in our auction catalogue and, in the event of any conflict or inconsistency, those special terms prevail over any other terms in our Auction Terms and Conditions. Please note that our Auction Terms and Conditions including these Terms of Consignment for Sellers in Public Auctions and our Conditions of Sale for Public Auctions relate to auctions held in our salerooms and we have separate terms and conditions for our online auctions.

If you, or another person acting on your behalf, provide goods to us to sell on your behalf at one of our auctions this signifies that you agree to and will comply with our Auction Terms and Conditions including these Terms of Consignment for Sellers in Public Auctions and our Conditions of Sale for Public Auctions.

1. INTERPRETATION. In these Terms the words 'you', 'yours', etc. refer to the Seller and if the consignment of goods to us is made by an agent or otherwise on the Seller's behalf we assume that the Seller has authorised the consignment and that the consignor has the Seller's authority to contract. All obligations that apply to the Seller under these Terms of Consignment for Sellers in Public Auctions shall apply to the owner of the goods and their agent jointly and separately. Similarly the words 'we', 'us', etc. refer to the Auctioneers.

2. WARRANTY. The Seller warrants that possession in the lots can be transferred to the Buyer with good and marketable title, free from any third party right and encumbrances, claims or potential claims. The Seller has provided all information concerning the item's ownership, condition and provenance, attribution, authenticity, import or export history and of any concerns expressed by third parties concerning the same.

3. ALL COMMISSIONS and fees are subject to VAT at the prevailing rate.

4. COMMISSION is charged to sellers and all selling terms are available from our salerooms.

5. REMOVAL COSTS. Items for sale must be consigned to the saleroom by any stated deadline and at your expense. We may be able to assist you with this process but any liability incurred to a carrier for haulage charges is solely your responsibility.

6. LOSS AND DAMAGE OF GOODS.

(a) Loss and Damage Warranty – Dreweatts is not authorised by the FCA to provide insurance to its clients, and does not do so. However Dreweatts for its own protection assumes liability for property consigned to it at the lower pre-sale estimate until the hammer falls. To justify accepting liability, Dreweatts makes a charge of 1.5% of the hammer price plus VAT, subject to a minimum charge of £1.50, or if unsold 1.5% of our lower estimate. The liability assumed by Dreweatts shall be limited to the lower pre-sale estimate or the hammer price if the lot is sold. Dreweatts is not liable for damage to gilded picture frames, plaster picture frames or picture frame glass; if the Lot is or becomes dangerous, we may dispose of it without notice to you in advance in any manner we see fit and will be under no liability for doing so.

(b) If the owner of the goods consigned instructs us in writing not to take such action, the goods then remain entirely at the owner's risk unless and until the property in them passes to the Buyer or they are collected by or on behalf of the owner, and clause 6 (a) is inapplicable.

7. ILLUSTRATIONS AND PHOTOGRAPHS. The cost of any illustrations or photographs is borne by you. The copyright in respect of such illustrations and photographs shall be the property of us, the auctioneers, as is the text of the catalogue.

8. MINIMUM BIDS AND OUR DISCRETION. Goods will normally be offered subject to a reserve agreed between us before the sale in accordance with clause 9. We may sell Lots below the reserve provided we account to you for the same sale proceeds as you would have received had the reserve been the hammer price. If you specifically give us a "discretion" we may accept a bid of up to 10% below the formal reserve.

9. RESERVES.

(a) You are entitled to place prior to the auction a reserve on any lot consigned, being the minimum hammer price at which that lot may be sold. Reserves must be reasonable and we may decline to offer goods which in our opinion would be subject to an unreasonably high reserve (in which case goods carry the storage and loss and damage warranty charges stipulated in these Terms of Consignment).

(b) A reserve once set cannot be changed except with our consent.

(c) Where a reserve has been set which we consider unreasonably high, an unsold charge will be payable in the event that the lots fails to sell, being the agreed selling terms calculated on the reserve, LDW at 1.5% and any photographic charges.

(d) Where a reserve has been placed only we may bid on your behalf and only up to the reserve (if any) and you may in no circumstances bid personally.

(e) Reserves are not usually accepted for lots expected to realise below £100

10. ELECTRICAL ITEMS. These are subject to detailed statutory safety controls. Where such items are accepted for sale you accept responsibility for the cost of testing by external contractors. Goods not certified as safe by an electrician (unless antiques) will not be accepted for sale. They must be removed at your expense on your being notified. We reserve the right to dispose of unsafe goods as refuse, at your expense.

11. SOFT FURNISHINGS. The sale of soft furnishings is strictly regulated by statute law in the interests of fire safety. Goods found to infringe safety regulations will not be offered and must be removed at your expense. We reserve the right to dispose of unsafe goods as refuse, at your expense. The rights of disposal referred to in clause 10 and 11 are subject to the provisions of The Torts (Interference with Goods) Act 1977.

12. DESCRIPTION. Please assist us with accurate information as to the provenance, lawful import etc. of goods where this is relevant. There is strict liability for the accuracy of descriptions under modern consumer legislation and in some circumstances responsibility lies with sellers if inaccuracies occur. We will assume that you have approved the catalogue description of your lots and that your lots match those descriptions unless informed to the contrary. Where we are obliged to return the price to the buyer when the lot is a deliberate forgery under Condition 15 of the Conditions of Sale and we have accounted to you for the proceeds of sale you agree to reimburse us the sale proceeds and in any event within 7 days of our written notice to do so.

13. UNSOLD. If an item is unsold it may at our discretion be re-offered at a future sale. Where in our opinion an item is unsaleable you must collect such items from the saleroom promptly on being so informed. Otherwise, storage charges may be incurred. We reserve the right to charge for storage in these circumstances at a reasonable daily rate.

14. WITHDRAWN AND BOUGHT IN ITEMS. These are liable to incur a charge of 15% commission, 1.5 % Loss and Damage Warranty and any other costs incurred including but not limited to illustration and restoration fees all of these charges being subject to VAT on being bought in or withdrawn after being catalogued.

15. CONDITIONS OF SALE. You agree that all goods will be sold on our Conditions of Sale for Public Auctions. In particular you undertake that you have the right to sell the goods either as owner or agent for the owner with good and marketable title and free and clear of any third party rights or claims. You undertake to compensate us and any buyer or third party for all losses liabilities, costs and expenses suffered or incurred arising out of or in connection with any breach of this undertaking. We will also, at our discretion, and as far as practicable, confirm that an item consigned for sale does not appear on the Art Loss register, which is administered by an independent third party.

CONDITIONS OF SALE FOR PUBLIC AUCTIONS

Dreweatts carries on business with bidders, buyers and all those present in the auction room prior to or in connection with a sale by auction at our salerooms on our Auction Terms and Conditions or Public Auctions including these Conditions of Sale for Public Auctions and all bidders, buyers and others participating in a public auction accept that these terms apply to the exclusion of any terms and conditions contained in any of those person's own documents even if the same purport to provide that that person's own or some other terms prevail. Any particular public auction and/or any particular lot in an auction may be subject to different or additional terms which will be published in our online auction catalogue. Please note that our Auction Terms and Conditions including these Conditions of Sale for Public Auctions relate to auctions held in one of our salerooms and we have separate terms and conditions for our online auctions.

1. DEFINITIONS
In these Conditions:

(a) "auctioneer" means the firm of Dreweatts or its authorised auctioneer, as appropriate;

(b) "deliberate forgery" means an imitation made with the intention of deceiving as to authorship, origin, date, age, period, culture or source but which is unequivocally described in the catalogue as being the work of a particular creator and which at the date of the sale had a value materially less than it would have had if it had been in accordance with the description;

(c) "hammer price" means the level of bidding reached (at or above any reserve) when the auctioneer brings down the hammer;

(d) "terms of consignment" means the stipulated terms and rates of commission on which Dreweatts accepts instructions from sellers or their agents;

(e) "total amount due" means the hammer price in respect of the lot sold together with any premium, Value Added Tax chargeable and any additional charges payable by a defaulting buyer under these Conditions;

16. DUE DILIGENCE CHECKS AND ANTI-MONEY LAUNDERING PROCEDURES. Under the money laundering regulations in force we are required to carry out relevant due diligence checks. This includes verifying the identity of all customers we transact with as well as any beneficial owners on behalf of whom they may transact. Vendors who are unable to or refuse to supply required identification documents and proof of address will not be able to consign to Dreweatts auctions. Copies of customer due diligence checks will be stored for as long as it is necessary to satisfy legal requirements in an appropriate storage facility, which for the avoidance of doubt may include storage solely in electronic form. We reserve the right to withhold the monies owed until the vendor provides the information necessary to complete the anti-money laundering checks.

17. AUTHORITY TO DEDUCT COMMISSION AND EXPENSES AND RETAIN PREMIUM AND INTEREST.

(a) You authorise us to deduct commission at the stated rate and all expenses incurred for your account from the hammer price and consent to our right to retain beneficially the premium paid by the buyer in accordance with our Conditions of Sale for Public Auctions and any interest earned on the sale proceeds until the date of settlement.

(b) You authorise us in our discretion to negotiate a sale by private treaty not later than the close of business 48 hours after the day of sale in the case of lots unsold at auction, in which case the same charges will be payable as if such lots had been sold at auction and so far as appropriate these Terms apply.

18. WAREHOUSING. We disclaim all liability for goods delivered to our saleroom without sufficient sale instructions and reserve the right to make minimum warehousing charge of £10 per lot per day. Unsold lots are subject to the same charges if you do not remove them within a reasonable time of notification. If not removed within three weeks we reserve the right to sell them and defray charges from any net proceeds of sale or at your expense to consign them to the local authority for disposal.

19. SETTLEMENT. After sale settlement of the net sum due to you normally takes place within 28 days of the sale unless the buyer has not paid for the goods or the checks necessary under the current Money Laundering Regulations have not been completed. In this case no settlement will then be made but we will take your instructions in the light of our Conditions of Sale for Public Auctions. You authorise any sums owed by you to us on other transactions to be deducted from the sale proceeds. You must note the liability to reimburse the proceeds of sale to us as under the circumstances provided for in Condition 12 above. You should therefore bear this potential liability in mind before parting with the proceeds of sale until the expiry of 28 days from the date of sale.

(f) "sale proceeds" means the net amount due to the seller, being the hammer price of the lot sold less commission at the stated rate, Value Added Tax chargeable and any other amounts due to us by the seller in whatever capacity and however arising;

(g) "You", "Your", etc. refer to the buyer as identified in Condition 2.

(h) The singular includes the plural and vice versa as appropriate.

2. BIDDING PROCEDURES AND THE BUYER

(a) Bidders are required to register their particulars before bidding by completing a sale registration form and to satisfy any security arrangements before entering the auction room to view or bid;

(b) Under the money laundering regulations in force we are required to verify the identity of all customers we transact with as well as any beneficiaries on behalf of whom they may transact. Customers who are unable to or refuse to supply required identification documents and proof of address will not be able to bid in Dreweatts auctions. Copies of customer due diligence checks will be stored for as long as it is necessary to satisfy legal requirements in an appropriate storage facility which for the avoidance of doubt may include storage solely in electronic form;

(c) the maker of the highest bid accepted by the auctioneer conducting the sale shall be the buyer at the hammer price and any dispute about a bid shall be settled at the auctioneer's absolute discretion by reoffering the Lot during the course of the auction or otherwise. The auctioneer shall act reasonably in exercising this discretion.

(d) Bidders shall be deemed to act as principals.

(e) Our right to bid on behalf of the seller is expressly reserved up to the amount of any reserve and the right to refuse any bid is also reserved.

3. INCREMENTS. Bidding increments shall be at the auctioneer's sole discretion.

4. THE PURCHASE PRICE. The buyer shall pay the purchase price together with a premium thereon of 18% which shall include VAT on the premium at the rate imposed by law. The buyer will also be liable for any royalties payable under Droit de Suite as set out under Information for Buyers.

5. VALUE ADDED TAX. Value Added Tax on the hammer price is imposed by law on all items affixed with a dagger (†) or double dagger (‡). Value Added Tax is charged at the appropriate rate prevailing by law at the date of sale and is payable by buyers of relevant Lots. (Please refer to "Information for Buyers" for a brief explanation of the VAT position).

6. PAYMENT.

(a) Immediately a Lot is sold you will:

(i) give to us, if requested, proof of identity, and

(ii) pay to us the total amount due or in such other way as is agreed by us.

(b) Any payments by you to us may be applied by us towards any sums owing from you to us on any account whatever without regard to any directions of you or your agent, whether expressed or implied; (c) In order to comply with money laundering regulations we reserve the right to require proof of source of funds and/or confirmation of the nature and source of wealth for all receipts of monies from clients directly or from third parties for payments on behalf of clients. Lots will only be released once we have completed necessary checks under the current Money Laundering Regulations.

7. TITLE AND COLLECTION OF PURCHASES. (a) The ownership of any Lots purchased shall not pass to you until you have made payment in full to us of the total amount due.

(b) You shall at your own risk and expense take away any lots that you have purchased and paid for not later than 3 working days following the day of the auction after which you shall be responsible for any removal, storage and insurance charges.

(c) No purchase can be claimed or removed until it has been paid for and we have completed necessary checks under the current Money Laundering Regulations.

8. REMEDIES FOR NON-PAYMENT OR FAILURE TO COLLECT PURCHASES.

(a) If any Lot is not paid for in full and taken away in accordance with these Conditions or if there is any other breach of these Conditions, we, as agent for the seller and on our own behalf, shall at our absolute discretion and without prejudice to any other rights we may have, be entitled to exercise one or more of the following rights and remedies:

(i) to proceed against you for damages for breach of contract;

(ii) to rescind the sale of that Lot and/or any other Lots sold by us to you;

(iii) to resell the Lot (by auction or private treaty) in which case you shall be responsible for any resulting deficiency in the total amount due (after crediting any part payment and adding any resale costs). Any surplus so arising shall belong to the seller;

(iv) to remove, store and insure the Lot at your expense and, in the case of storage, either at our premises or elsewhere;

(v) to charge interest at a rate not exceeding 1.5% per month on the total amount due to the extent it remains unpaid for more than 3 working days after the sale;

(vi) to retain that or any other Lot sold to you until you pay the total amount due;

(vii) to reject or ignore bids from you or your agent at future auctions or to impose conditions before any such bids shall be accepted;

(viii) to apply any proceeds of sale of other Lots due or in future becoming due to you towards the settlement of the total amount due and to exercise a lien (that is a right to retain possession of) any of your property in our possession for any purpose until the debt due is satisfied.

(b) We shall, as agent for the seller and on our own behalf pursue these rights and remedies only so far as is reasonable to make appropriate recovery in respect of breach of these conditions

9. THIRD PARTY LIABILITY. All bidders, buyers and other members of the public on our premises are there at their own risk and must note the lay-out of the accommodation and security arrangements. Accordingly neither the auctioneer nor our employees or agents shall incur liability for death or personal injury or for the safety of the property of persons visiting prior to or at a sale (except in each case as may be required by law by reason of our negligence)

10. COMMISSION BIDS. Whilst prospective buyers are strongly advised to attend the auction and are always responsible for any decision to bid for a particular Lot and shall be assumed to have carefully inspected and satisfied themselves as to its condition, we will if so instructed clearly and in writing execute bids on their behalf. Neither the auctioneer nor our employees or agents shall be responsible for any failure to do so.

Where two or more commission bids at the same level are recorded we reserve the right in our absolute discretion to prefer the first bid so made.

11. WARRANTY OF TITLE AND AVAILABILITY. The seller warrants to the auctioneer and you that the seller is the true owner of the property consigned or is properly authorised by the true owner to consign for sale and is able to transfer good and marketable title to the property free from any third party claims.

Save as expressly set out above, all other warranties, conditions or other terms which might have effect between the Seller and you, or us and you, or be implied or incorporated by statute, common law or otherwise are excluded to the fullest extent permitted by law.

12. AGENCY. The auctioneer normally acts as agent only and disclaims any responsibility for default by sellers or buyers.

13. TERMS OF SALE. The seller acknowledges that Lots are sold subject to the stipulations of these Conditions in their entirety and on the Terms of Consignment for Public Auctions as notified to the consignor at the time of the entry of the Lot.

14. DESCRIPTIONS AND CONDITION.

(a) Whilst we seek to describe lots accurately, it may be impractical for us to carry out exhaustive due diligence on each lot. Prospective buyers are given ample opportunities to view and inspect before any sale and they (and any independent experts on their behalf) must satisfy themselves as to the accuracy of any description applied to a lot. Prospective buyers also bid on the understanding that, inevitably, representations or statements by us as to authorship, genuineness, origin, date, age, provenance, condition or estimated selling price involve matters of opinion. We undertake that any such opinion shall be honestly and reasonably held and accept liability for opinions given negligently or fraudulently. Subject to the foregoing neither we the auctioneer nor our employees or agents nor the seller accept liability for the correctness of such opinions and all conditions and warranties, whether relating to description, condition or quality of lots, express, implied or statutory, are hereby excluded. Dreweatts is not liable for damage to gilded picture frames, plaster picture frames or picture frame glass; if the Lot is or becomes dangerous, we may dispose of it without notice to you in advance in any manner we see fit and will be under no liability for doing so. This Condition is subject to the next following Condition concerning deliberate forgeries and applies save as provided for in paragraph 6 "information to buyers".

(b) Private treaty sales made under these Conditions are deemed to be sales by auction for purposes of consumer legislation.

15. FORGERIES. Notwithstanding the preceding Condition, any Lot which proves to be a deliberate forgery (as defined) may be returned to us by you within 21 days of the auction provided it is in the same condition as when bought, and is accompanied by particulars identifying it from the relevant catalogue description and a written statement of defects. If we are satisfied from the evidence presented that the Lot is a deliberate forgery we shall refund the money paid by you for the Lot including any buyer's premium provided that (1) if the catalogue description reflected the accepted view of scholars and experts as at the date of sale or

(2) you personally are not able to transfer a good and marketable title to us, you shall have no rights under this condition.

The right of return provided by this Condition is additional to any right or remedy provided by law or by these Conditions of Sale.

16. PRIVACY NOTICE. We will hold and process any personal data in relation to you in accordance with our current privacy policy, a copy of which is available on our website <http://www.dreweatts.com/privacy-security/>.

GENERAL

17. We shall have the right at our discretion, to refuse admission to our premises or attendance at our auctions by any person.

18. (a) Any right to compensation for losses liabilities and expenses incurred in respect of and as a result of any breach of these Conditions and any exclusions provided by them shall be available to the seller and/or the auctioneer as appropriate.

(b) Such rights and exclusions shall extend to and be deemed to be for the benefit of employees and agents of the seller and/or the auctioneer who may themselves enforce them.

19. Any notice to any buyer, seller, bidder or viewer may be given by first class mail, email or Swiftmail in which case it shall be deemed to have been received by the addressee 48 hours after posting.

20. Special terms may be used in catalogue descriptions of particular classes of items in which case the descriptions must be interpreted in accordance with any glossary appearing at the commencement of the catalogue.

21. Any indulgence extended to bidders, buyers or sellers by us notwithstanding the strict terms of these Conditions or of the Terms of Consignment shall affect the position at the relevant time only and in respect of that particular concession only; in all other respects these Conditions shall be construed as having full force and effect.

22. These Conditions shall be governed by and construed in accordance with English law and the parties irrevocably submit to the exclusive jurisdiction of the English courts.

DREWEATTS

NEWBURY

Dreweatts

Donnington Priory

Newbury

Berkshire RG14 2JE

+44 (0) 1635 553 553

info@dreweatts.com

CHAIRMAN

Will Richards

DEPUTY CHAIRMAN

James Nicholson

LONDON

Dreweatts / Bloomsbury Auctions

16-17 Pall Mall

St James's

London SW1Y 5LU

+44 (0) 20 7839 8880

info@bloomsburyauctions.com

info@dreweatts.com

HAMBRIDGE LANE

Dreweatts

1 Hambridge Lane

Newbury

Berkshire RG14 5TU

+44 (0) 1635 553 553

info@dreweatts.com

GROUP DEPARTMENTS

AUTOGRAPHS AND EPHEMERA

Ania Hanrahan

ahanrahan@dreweatts.com

ASIAN CERAMICS AND WORKS

OF ART

Mark Newstead

Dr Yingwen Tao

Qinyi He

asian@dreweatts.com

BLOOMSBURY AUCTIONS BOOKS

AND MANUSCRIPTS

Rupert Powell

Dido Arthur

Justin Phillips

Max Hasler

Richard Caroll

info@bloomsburyauctions.com

BRITISH AND EUROPEAN CERAMICS

AND GLASS

Mark Newstead

Geoffrey Stafford Charles

interiors@dreweatts.com

BRITISH AND EUROPEAN SCULPTURE

AND WORKS OF ART

Silas Currie Leigh-Wood

sculpture@dreweatts.com

CLOCKS AND SCIENTIFIC

INSTRUMENTS

Leighton Gillibrand

clocks@dreweatts.com

COUNTRY SPORTING

Geoffrey Stafford Charles

gscharles@dreweatts.com

FURNITURE AND CARPETS

Ben Brown

Elaine Binning

Ashley Matthews

William Turkington

Mitchell Tompkins

furniture@dreweatts.com

HOUSE SALES AND PRIVATE

COLLECTIONS

Joe Robinson

Peter Horwood

Rosie Jarvie

Eloise Kerr-Smiley

Arabella Methuen

housesales@dreweatts.com

JEWELLERY, SILVER, WATCHES AND

OBJECTS OF VERTU

James Nicholson

Charlotte Peel

Nick Mann

Tessa Parry

jsw@dreweatts.com

LIVE STEAM AND MODEL

ENGINEERING WORKS OF ART

Lucie Hobbs

transport@dreweatts.com

MODERN AND CONTEMPORARY ART

Jennie Fisher

Francesca Walsh

Will Porter (Business Development)

Anastasia Fedoseeva

pictures@dreweatts.com

MODERN DESIGN AND

DECORATIVE ART

Gemma Sanders

Geoffrey Stafford Charles

Ashley Matthews

Luke McGurk

design@dreweatts.com

OLD MASTER, BRITISH AND

EUROPEAN ART

Brandon Lindberg

Lucy Darlington

Daniele Amesso

Isabelle Rietkerk

pictures@dreweatts.com

WINE

Hugo Spencer

Mark Robertson

Violette Jongbloed

wine@dreweatts.com

CONSIGNMENT MANAGEMENT

Lucie Hobbs

Christy Chambers

consignments@dreweatts.com

VALUATIONS FOR PROBATE,

INSURANCE AND CGT

Emma Terry

Janice Clift

valuations@dreweatts.com



DREWEATTS

EST. 1759