

## ABSOLUTE AUCTION

### FUHRMAN BROWN PRECISION TOOL

**Auction Begins Closing:  
Thursday, July 10, 9 AM ET**

#### MISCELLANEOUS MACHINE TOOLS

Warner & Swasey #3 Turret Lathe, s/n 641805, Tooling

Schmidt Model 5T Parts Marker, s/n 8448

Benchmaster C-Frame Punch Press, Estimated 5 Ton Capacity

Black Diamond Model 95P-O Drill Grinder, with Collets

Rampe Deburring Tumbler

Lincoln Model SP-175T Tig Welder, s/n 10985

American Induction Heater, Model MG7.5, s/n 2698-1-770, 7.5 KW, 220/1/60

Covel Model 14A Optical Comparator, s/n 14A-2865, Quadra-Chek 2000 Processor/D.R.O.

Trinco #36 Sand Blast Cabinet, s/n 32364, with Reclaimer

#### TOOLING, GAGING. SHOP SUPPORT

Carbide Mills, Carbide Inserts, Mills, Drills, Taps, Dies, Reamers, Countersinks, Counterbores, Saw Blade Cutters, Chamfer Tools, Broaches, Kurt Vises, Bridgeport Vises, Clamps, 5C Indexers, Rotary Tables, Dividing Heads, Super Spacers, V-Blocks, 1-2-3 Blocks, Angle Plates, Micrometers, Calipers, Height Gages, Surface Plates, Bore Gages, Pin Gages, Jo Blocks, Thread Gages, Plug Gages, Dressers, Grinding Wheels, Abrasives, Saw Blades, Grind-Alls, Boring Heads, Boring Bars, 40 Taper CNC Holders, CNC Collets, Aloris Lathe Tooling, Centers, Jacobs Chucks, Baldor Pedestal Grinders, Shipping Items, Shop and Office Furniture, Helicoil Items, Die Heads, 5C and R8 Collets, Toolmaker's Benches, Pallet Jacks, Carts, Steel Racks, Steel Inventory, Parts Cleaner, Oxy-Acet Torch, Welding Table, Hoppers, Ladders, Fans, Shop Vacs, Building and Machine Maintenance Items, Many Additional Items

**IRNSIDE  
MACHINERY**

Wesley Richard Pace, Auctioneer  
ironsidemachinery.com • 610-360-0570

**INSPECTION:** Wed. July 9, 9:00 AM - 4:00 PM ET

**TERMS:** ABSOLUTE ONLINE AUCTION. Bidders must pre-register on Bidspotter.com 24 hours before bidding. A 18% Buyers Premium is in effect for this auction. Everything sells "As Is, Where Is, In Place" with ALL defects whether apparent or not. It is the buyers responsibility to inspect before Bidding. Removal is the buyers responsibility, expense and risk. Everything must be paid for within 48 hours of the auction's conclusion with Cash, Check with Positive ID, Visa, MC Discover or AMEX . If Purchases are paid for with a credit card, an additional 3% Convenience Fee will be added to the invoice.

Consulting Services Provided By Bryan Harvey, Thompson Auctioneers, Inc.  
937-609-6354 • thompsonauctioneers.com



Okamoto Model 8-20ST Automatic Surface Grinder



Amada Model HA250 Automatic Horizontal Band Saw



Chicago Pneumatics Model CPVSD-10D Rotary Screw Air Com-

ONLINE ONLY - AUCTION BEGINS CLOSING THURSDAY, JULY 10, 9:00 AM ET

## ABSOLUTE AUCTION

Extremely Clean Tool & Machining Facility - Business Closing

### FUHRMAN BROWN PRECISION TOOL

5630 New Perry Highway, Erie, PA 16508



1 of 2

Mori Seiki  
Dura 5080  
Vertical  
Machining  
Center

**IRNSIDE  
MACHINERY**

P.O. Box 336  
Riegelsville, PA 10877

Pre-Sort First Class  
U.S. POSTAGE  
**PAID**  
Dayton, Ohio  
Permit No. 543

ABSOLUTE ONLINE AUCTION - EXTREMELY CLEAN TOOL & MACHINING FACILITY!



Mori Seiki MV-50E  
Vertical Machining  
Center



New  
2013

DMG Mori Mill Tap  
700 CNC Vertical  
Machining Center

### FUHRMAN BROWN PRECISION TOOL

5630 New Perry Highway, Erie, PA 16508

(2) Mori Seiki Dura 5080 Vertical Machining Centers • DMG Mori Mill Tap 700 CNC Vertical Machining Center, New 2013

Mori Seiki MV-50E Vertical Machining Center • (2) Mori Seiki MV-40E Vertical Machining Centers

Blanchard 18-36 Rotary Surface Grinder • Okamoto 8-20 Automatic Surface Grinder

(3) Clausing Colchester & Mori Seiki Engine Lathes • Amada HA-250 Horizontal Band Saw • (21) Bridgeport Vertical Mills

Cincinnati Production Mills • Air Compressors • Tooling & Support Items • Large Qty. Steel Bar Stock • Gaging • Many Additional Items

**IRNSIDE  
MACHINERY**

Wesley Richard Pace, Auctioneer  
PA Auctioneer License #AU005521  
ironsidemachinery.com • 610-360-0570

Consulting Services Provided By:  
Bryan Harvey, 937-609-6354  
Thompson Auctioneers, Inc.

ONLINE ONLY - AUCTION BEGINS CLOSING THURSDAY, JULY 10, 9:00 AM ET

## ABSOLUTE AUCTION



Mori Seiki Dura 5080 Vertical Machining Center

1 of 2



Mori Seiki MV-40E Vertical Machining Center???

### FUHRMAN BROWN PRECISION TOOL

5630 New Perry Highway, Erie, PA 16508

**Online Bidding Now Open! Auction Begins Closing:  
THURSDAY, JULY 10, 9 AM ET**

**Inspection: Wednesday, July 9, 9 AM - 4 PM ET**

• **ONLINE BIDDING NOW OPEN - FEATURING •**

(2) Mori Seiki Dura 5080 Vertical Machining Centers

DMG Mori Mill Tap 700 CNC Vertical Machining Center, New 2013

Mori Seiki MV-50E Vertical Machining Center • (2) Mori Seiki MV-40E Vertical Machining Centers

Blanchard 18-36 Rotary Surface Grinder • Okamoto 8-20 Automatic Surface Grinder

(3) Clausing Colchester & Mori Seiki Engine Lathes • Amada HA-250 Horizontal Band Saw

(21) Bridgeport Vertical Mills • Cincinnati Production Mills • Air Compressors • Tooling & Support Items

Large Quantity Steel Bar Stock • Gaging • Many Additional Items

**BidSpotter**

**For Bidding & Registration go to [ironsidemachinery.com](http://ironsidemachinery.com) or [bidspotter.com](http://bidspotter.com)**

**IRNSIDE  
MACHINERY**

Wesley Richard Pace, Auctioneer  
PA Auctioneer License #AU005521  
ironsidemachinery.com • 610-360-0570

Consulting Services Provided By:  
Bryan Harvey, 937-609-6354  
Thompson Auctioneers, Inc.



# ABSOLUTE AUCTION

## FUHRMAN BROWN PRECISION TOOL

**Auction Begins Closing:  
Thursday, July 10, 9 AM ET**  
**Inspection: Wed., July 9, 9 AM - 4 PM ET**

### CNC VERTICAL MILL AND TAP MACHINE

**DMG Mori** Model MillTap 700 CNC Mill and Tap Machine, s/n ML70131043, New 2013, Siemens 840Dsl CNC Control, 30 Taper, 15 HP, 10,000 RPM, 25 ATC, 33.1" X 16.5" Table, 27.6" X 16.5" X 15" Travels

### CNC VERTICAL MACHINING CENTERS

**Mori Seiki** Model Dura 5080 CNC Vertical Machining Center, s/n DV005-HE-1517, New 2008, MSC-504III CNC Control, 43.3" X 23.6" Table, 31.5" X 20.9" X 20.1" Travels, 40 Taper, 30 ATC, 12,000 RPM, Power On Hours Listed 23,478, Operating Hours Listed 4,301, Cutting Hours Listed 3,139 Hours

**Mori Seiki** Model Dura 5080 CNC Vertical Machining Center, s/n DV005-GF-0804, New 2007, MSC-504 CNC Control, 43.3" X 23.6" Table, 31.5" X 20.9" X 20.1" Travels, 40 Taper, 30 ATC, 12,000 RPM, Power On Hours Listed 11,589, Operating Hours Listed 2,246, Cutting Hours Listed 1,499 Hours

**Mori Seiki** Model MV-50E CNC Vertical Machining Center, s/n 23, New 2000, MSC-500 (Fanuc 21i-MA) CNC Control, 52" X 21.7" Table, 40" X 20.1" X 18.11" Travels, 40 Taper, 23 ATC

**Mori Seiki** Model MV-40E CNC Vertical Machining Center, s/n 1222, New 2000, MSC-500 (Fanuc 21i-MA) CNC Control, 35.4" X 17.7" Table, 22" X 16.1" X 18.1" Travels, 40 Taper, 20 ATC, 8,000 RPM, 4,713 Run Hours Listed

**Mori Seiki** Model MV-40E CNC Vertical Machining Center, s/n 1056, New 2000, MSC-500 (Fanuc 21i-MA) CNC Control, 35.4" X 17.7" Table, 22" X 16.1" X 18.1" Travels, 40 Taper, 20 ATC, 8,000 RPM, 6,340 Run Hours Listed

**Mori Seiki** Model MV-40 CNC Vertical Machining Center, s/n 1478, Fanuc 10M CNC Control, 40 Taper, 20 ATC, 43" X 17.7" Table, 31.5" X 16.1" Travels

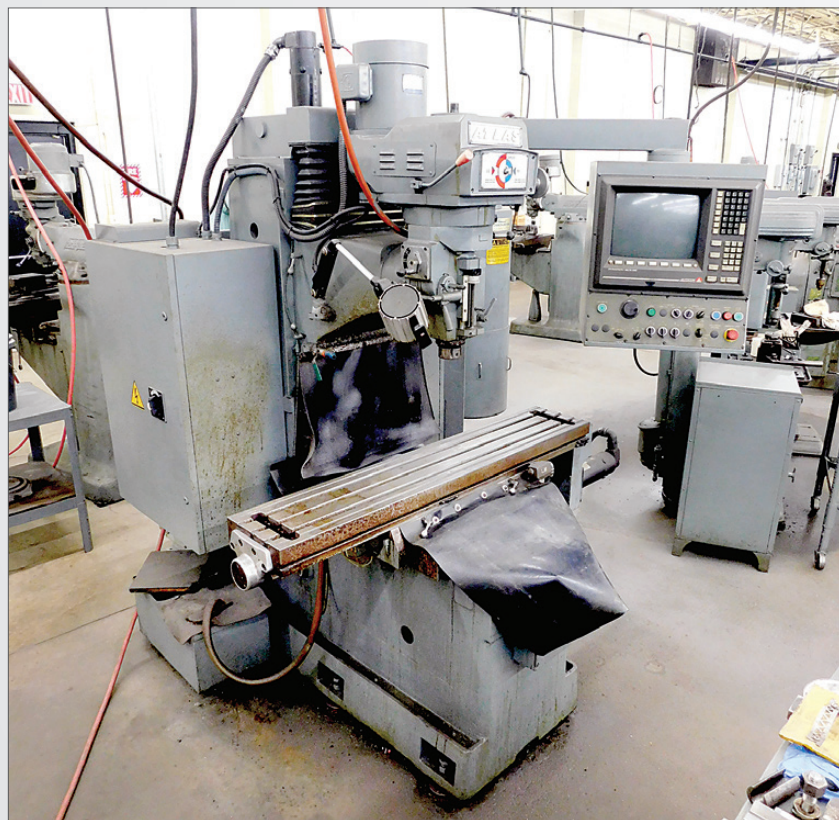
**IMT/Milltronics** Model VMC-1630A CNC Vertical Machining Center, s/n 8094, Fanuc Oi-MC CNC Control, 40 Taper, 24 ATC, 30" X 16" X 26" Travels

### CNC VERTICAL BED MILL

**Atlas** Model 4BVS-CNC40 CNC Vertical Bed Mill, s/n 981348, New 1998, Delta Dynapath Autocon CNC Control, 30 Taper Quick Change Spindle, 5 HP, 10" X 54" Table, 30.51" X 17.52" X 19.69" Travels



Mori Seiki Caption A



Atlas Model 4BVS-CNC40 CNC Vertical Bed Mill

**BidSpotter**

Bidding & Registration: [ironsidemachinery.com](http://ironsidemachinery.com) or [bidspotter.com](http://bidspotter.com)

### CNC VERTICAL MILLS

**Bridgeport** Series I Interact CNC Vertical Mill, s/n 27470289D, Heidenhahn TNC 151 CNC Control, 12 1/2" X 33 1/2" Table

**Bridgeport** Explorer I CNC Vertical Mill, s/n EXP153, Boss 9 CNC Control, 12 1/2" X 34" Table, Quick Change Spindle

### ENGINE LATHES

**Clausing Colchester** Mark 2 Engine Lathe, 15" X 50", s/n 6/0055/22818, Inch/Metric, Fully Tooled

**Clausing Colchester** Mark 2 Engine Lathe, 15" X 50", s/n 6/0055/25122, Inch/Metric, Fully Tooled

**Mori-Seiki** Model ML650 Engine Lathe, 16" X 40", s/n 3055, Inch/Metric

### ROTARY SURFACE GRINDER

**Blanchard** Model 18-36 Rotary Surface Grinder, s/n 6199, 36" Magnetic Chuck Diameter, 18" Segmented Wheel, 25 HP, Coolant, Chuck Controls

### AUTOMATIC SURFACE GRINDER

**Okamoto** Model 8-20ST Automatic Surface Grinder, s/n 2051, 3-Axis, 8" X 20" Electric Chuck with Controls, 2 HP

### AUTOMATIC HORIZONTAL BAND SAW

**Amada** Model HA250 Automatic Horizontal Band Saw, s/n 25400334, New 1995, 10" Round Capacity, 10" X 12" Rectangular Capacity, 1" Blade, 3/4 HP

### BRIDGEPORT VERTICAL MILLS

**Bridgeport** 1 HP, Step Pulley Vertical Mill, s/n 12BR219839, 9" X 42" Table

**Bridgeport** 1 HP, Step Pulley Vertical Mill, s/n 12BR217575, 9" X 42" Table

**Bridgeport** 1 HP, Step Pulley Vertical Mill, s/n 12BR204193, 9" X 42" Table

**Bridgeport** 1 HP, Step Pulley Vertical Mill, s/n 12BR199674, 9" X 42" Table

**Bridgeport** 1 HP, Step Pulley Vertical Mill, s/n 12BR178950, 9" X 42" Table

**Bridgeport** 1 HP, Step Pulley Vertical Mill, s/n 12BR178250, 9" X 42" Table

**Bridgeport** 1 HP, Step Pulley Vertical Mill, s/n 12BR163043, 9" X 42" Table

**Bridgeport** 1 HP, Step Pulley Vertical Mill, s/n 12BR162463, 9" X 42" Table, D.R.O.

**Bridgeport** 1 HP, Step Pulley Vertical Mill, s/n 12BR157739, 9" X 42" Table

**Bridgeport** 1 HP, Step Pulley Vertical Mill, s/n 12BR159228, 9" X 42" Table, Power Feed

**Bridgeport** 1 HP, Step Pulley Vertical Mill, s/n 12BR148330, 9" X 42" Table

**Bridgeport** 1 HP, Step Pulley Vertical Mill, s/n 12BR130336, 9" X 42" Table

**Bridgeport** 1 HP, Step Pulley Vertical Mill, s/n 12BR127188, 9" X 42" Table

**Bridgeport** 1 HP, Step Pulley Vertical Mill, s/n 12BR115440, 9" X 42" Table

**Bridgeport** 1 HP, Step Pulley Vertical Mill, s/n 12BR99164, 9" X 42" Table

**Bridgeport** 1 HP, Step Pulley Vertical Mill, s/n 12BR98693, 9" X 42" Table

**Bridgeport** 1 HP, Step Pulley Vertical Mill, s/n 12B35764, 9" X 42" Table

**Bridgeport** 1 HP, Step Pulley Vertical Mill, s/n BR25769, 9" X 42" Table

**Bridgeport** 1 HP, Step Pulley Vertical Mill, s/n 12BR75893, 9" X 42" Table

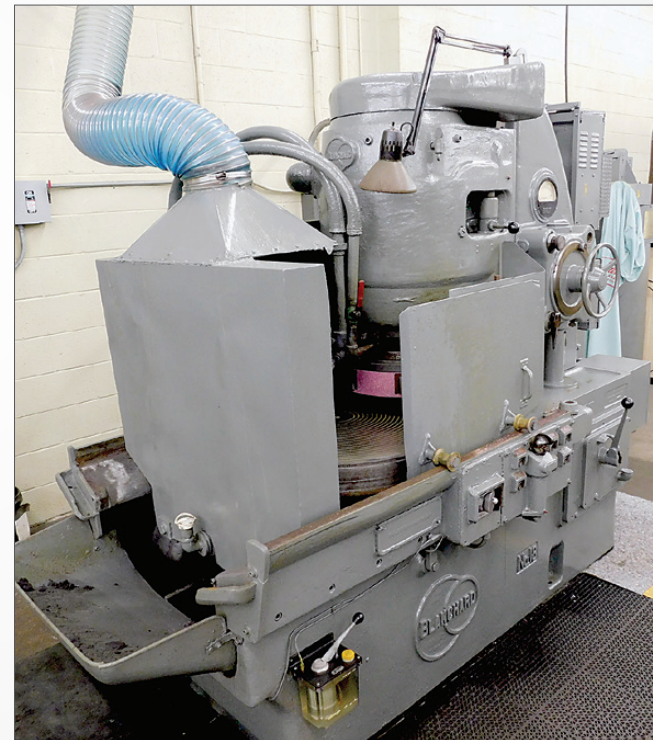
**Bridgeport** 1 HP, Step Pulley Vertical Mill, s/n 12BR94586, 9" X 42" Table

**Bridgeport** 1 HP, Step Pulley Vertical Mill, s/n 12BR28820, 9" X 42" Table

**Bridgeport** 1 HP, Step Pulley Vertical Mill, s/n BR36731, 9" X 42" Table



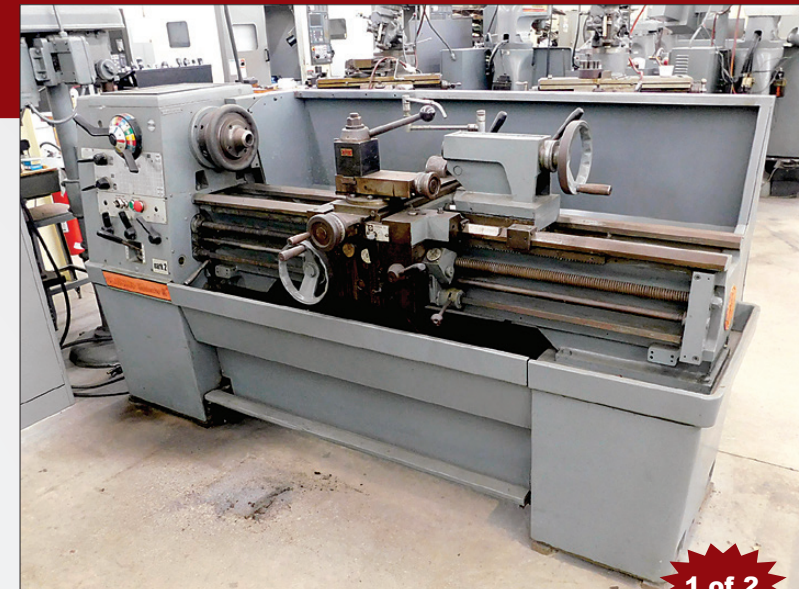
(22) Bridgeport 1 HP Step Pulley Vertical Mills



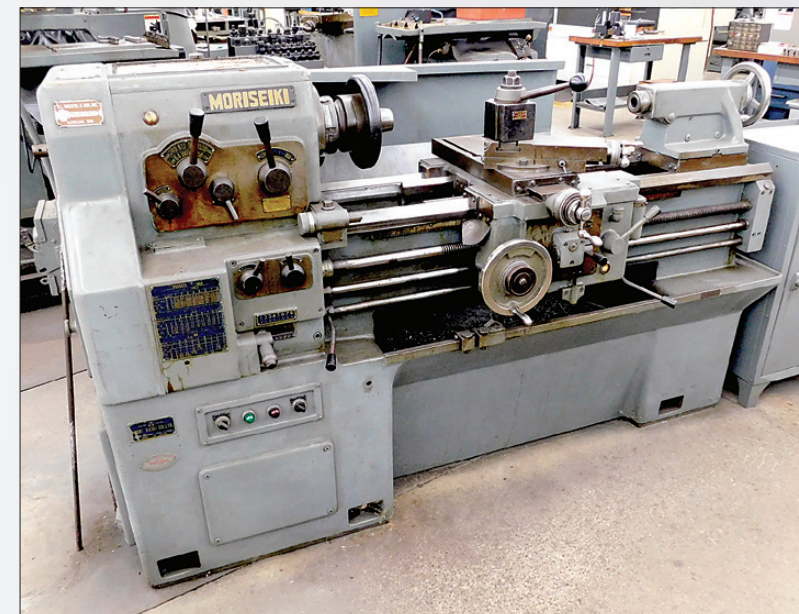
Blanchard Model 18-36 Rotary Surface Grinder

**IRONSIDE MACHINERY**

Wesley Richard Pace, Auctioneer  
[ironsidemachinery.com](http://ironsidemachinery.com) • 610-360-0570



Clausing Colchester Mark 2 Engine Lathe (1 of 2)



Mori-Seiki Model ML650 Engine Lathe



Clausing Colchester Mark 2 Engine Lathe (1 of 2)

### HORIZONTAL MILLS

**Cincinnati** #2 Horizontal Mill, s/n 2A2R1K-229, 50 Taper

**Cincinnati** #1-18 Horizontal Production Mill, s/n 2F1P1M-293, 40 Taper, 10" X 41" Table

**Cincinnati** #1-18 Horizontal Production Mill, s/n 2F1P1L-622, 40 Taper, 10" X 41" Table

**Cincinnati** #1-18 Horizontal Production Mill, s/n 2F1P1Y-33, 40 Taper, 10" X 41" Table

**Cincinnati** #1-18 Horizontal Production Mill, s/n D5203/10, 40 Taper, 10" X 41" Table

**Cincinnati** #1-18 Horizontal Production Mill, s/n D5408-13, 40 Taper, 10" X 41" Table

**Cincinnati** #1-18 Horizontal Production Mill, s/n 2F1P1Y-311, 40 Taper, 10" X 41" Table

**Cincinnati** #1-18 Horizontal Production Mill, s/n 2F1P1W-293, 40 Taper, 10" X 41" Table

### MISCELLANEOUS GRINDERS

**Cincinnati** #2 Tool & Cutter Grinder, s/n 1D2T115-34, Accessories

**Do-All** Model DH-612 Hand Feed Surface Grinder, s/n 138-62986, Walker 6" X 12" Chuck

**K.O. Lee** Model BA900 Tool & Cutter Grinder, s/n 13366

**K.O. Lee** Model BA900 Tool & Cutter Grinder, s/n 7296-3-61

(2) **Delta** Toolmaker's Cutter Grinders

**Delta** Double End Carbide Tool Grinder

### HORIZONTAL BAND SAWS

**Wellsaw** Model 613 Horizontal Band Saw, s/n 1772, 7" Round Capacity, 7" X 13" Rectangular Capacity, 3/4" Blade

**Wellsaw** Model 613 Horizontal Band Saw, s/n 1933, 7" Round Capacity, 7" X 13" Rectangular Capacity, 3/4" Blade

**Wellsaw** Model 600 Horizontal Band Saw, s/n 10154, 6" Round Capacity, 110/1/60

### VERTICAL BROACH

**Lapointe** Model FP-5-24 Hydraulic Vertical Broach, s/n 58017, 5 Ton, 24" Stroke

### DRILL PRESSES

**Delta Rockwell** 17" Floor Model Single Spindle Drill Press

**Bakewell** #1 Precision Tapping Machine, s/n 1052

**Bakewell** #1 Precision Tapping Machine, s/n 686

### AIR COMPRESSORS AND DRYER

**Chicago** Pneumatics Model CPVSD-10D Rotary Screw Air Compressor, s/n ITJ183108, New 2019, 10 HP, with Integral Air Dryer

**Kellogg American** 20 HP, 2-Stage Tank Mount Air Compressor

**ADA** Refrigerated Air Dryer