

MARTIN'S FARM TRUCKS LLC *Sales*

Public Auction

Onsite and Online

Thursday, July 31, 2025

9:00 AM

717.597.0310

15332 Molly Pitcher Highway, Greencastle, PA 17225

Trucks - Trailers - Parts - Tires - Tools



Nevin, Andrew, Victor, & Gordon Martin
Andrew - 717.816.1803 | Victor - 717.658.9930
Email: Info@MartinsAuctionService.com | Lic. #2826L

No Onsite Buyer's Premium!

Online bidding available via:



2014 Western Star 4900SA 32" Sleeper
Cum ISX15 500 hp, Jake, 18 spd, Airliner Susp,
16/46 Axles, 4.30 Ratio, Quadlock, 132k mi



2012 Mack CHU613 MP8 415 hp, Jake,
13 spd, Camelback susp, 14/44 Axles,
4.19 Ratio, 207" WB, Wet Line, 25k mi



2014 Freightliner Cascadia DD13 410 hp, Jake,
10 spd, Airliner susp, 12/40 Axles, 3.73 Ratio,
173" WB, Quadlock, Kalmar Hyd 5th wheel



2014 Western Star Detroit DD16 500 hp, Jake,
Allison 4500RDS, Air susp, 16/46 Axles, 4.30
Ratio, Quadlock, 228" WB, 57k mi



2019 Freightliner M2 Cummins L9 300hp,
Exhaust brake, **Allison 3000RDS,** Air susp,
12/21k Axles, 252" WB, 24' box, 164k mi



2003 Transcraft 48' x 102" Stepdeck
37' low deck, 11' upper deck, Air ride,
80k GVW

All Items In This Flyer Are In The Auction

Road Tractors



2012 Mack CHU613 MP8 505hp, Jake, 13spd, Camelback Susp, 14/44k Axles, 4.19 Ratio, 207" WB, 34k mi



2012 Mack CHU613 MP8 415hp, Jake, 13 spd, Camelback Susp, 14/44k Axles, 4.19 Ratio, 207" WB, 42k mi



2011 Mack CXU613 MP8 505hp, Jake, Mack 18 spd, Air Susp, 12/40k Axles, 3.90 Ratio, 186" WB, Quadlock, 19k mi



2011 Mack CXU613 MP8 415hp, Jake, 10 Spd, Air Susp, 12/40k Axles, 3.90 Ratio, 187" WB, Quadlock, Wetline, 35k mi



2006 International 5900i Cummins ISX 475hp, Jake, 10 Spd, Air Ride, 13/46k Axles, 3.73 Ratio, 218" WB, ¾ Locks, 111k mi



2007 Freightliner Columbia Detroit 12.7L 455hp, Jake, 10 Spd, Air Susp, 12/40k Axles, 3.70 Ratio, 169" WB, 556k mi



2007 Freightliner Columbia Cat C13 430hp, Jake, 10 Spd, Air Susp, 12/46k Axles, 3.73 Ratio, 201" WB, 510k mi



2012 Freightliner Columbia Glider Cat C15 435hp, Jake, 10 Spd, Air Susp, 12/40k Axles, 3.55 Ratio, 212" WB, 636k mi



2007 Peterbilt 378 Cummins ISX 475hp, Jake, 8LL, Air Susp. 14/40k Axles, 3.9 Ratio, 210" WB, Quadlock, 430k mi



2006 International 9900i Cat C15 475hp, Jake, 18 Spd, Air Susp, 12/46k Axles, 3.91 Ratio, 203" WB, Quadlock



2000 Kenworth T800 Cat C12 380hp, 10 Spd, Kenworth 8 bag Susp, 12/40k Axles, 3.70 Ratio, 174" WB, 463k mi



2017 Peterbilt 365 Paccar MX-13 455hp, Jake, 10 spd Autoshift, AirTrac Susp, 12/46k Axles, 3.58 Ratio, 206" WB, ¾ Locks, 306k mi



2016 Freightliner Cascadia Detroit DD13 435hp, Jake, Det 12 Spd Autoshift, Air Susp, 12/40k Axles, 3.25 Ratio, 178" WB, 426k mi



2019 Kenworth T680 Paccar MX-13 455hp, Jake, 12 Spd Autoshift, Air Susp, 12/40k Axles, 2.64 Ratio, 178" WB, 449k mi



2014 Freightliner Cascadia 125 Detroit DD13 450hp, Jake, 10 Spd, Air Susp, 14/40k Axles, 3.55 Ratio, 210" WB, 207k mi



2014 Western Star 4900 Detroit DD16 600hp, Jake, 10 Spd Autoshift, Air Susp, 12/40k Axles, 3.70 Ratio, 216" WB, 605k mi



1999 Freightliner FLD120 Detroit 12.7L 430hp, Jake, 10 Spd, Air Susp, 12/40k Axles, 3.9 Ratio, 178" WB, 132k mi



1996 Ford AT9513 Cat 3406 450hp, Jake, 10 Spd, Air Susp, 12/40k Axles, 3.91 Ratio, 184" WB, 310k mi



2007 International 9900i Cummins ISX 400hp, 10 Spd, Air Susp, 12/40k Axles, 4.11 Ratio, 459k mi



1985 Western Star 4964 Cummins NTC 400hp, 13 Spd, Spring Susp, 12/38k Axles, 217" WB, 2 spd aux. Trans, 279k mi



2020 Mack AN64T MP8 505hp, Jake, 12 Spd mDrive, Air Susp, 13/45k Axles, 3.42 Ratio, 186" WB, Quadlock, 355k mi



2011 Mack CHU613 MP8 415hp, 13 Spd, Camelback Susp, 14/44k Axles, 4.19 Ratio, 207" WB, 100k mi



2005 Volvo VNM Volvo D12 365hp, 9 Spd, Air Susp, 12/37k Axles, 2.93 Ratio, 160" WB, 1.6m mi



2019 Volvo VNR300 Volvo D13 500 hp, Jake, 12 Spd AutoShift, Air Susp, 12/20k Axles, 2.5 Ratio, Locking Rear, 687k mi



2015 Peterbilt 389 36" Sleeper Cummins ISX15 485hp, Jake, 18 Spd, Air Susp, 14/46 Axles, 3.91 Ratio, Quadlock, 32k mi



2004 Peterbilt 379 60" Sleeper Cat C15 S/N MBN 525hp, Jake, 10 Spd, Air Susp, 12/36k Axles, 3.7 Ratio, 250" WB, 442k mi



2007 International 9400i Sleeper Cat C15 550hp, Jake, 18 Spd, Air Susp, 14/46k Axles, 4.56 Ratio, 242" WB, Quadlock, 68k mi



2015 Freightliner Cascadia Sleeper Det DD15 505hp, Jake, Allison 4000RDS, Air Susp, 4.11 Ratio, 13/40k Axles, 245" WB, 471k mi



2024 Peterbilt 589 80" Sleeper Cummins X15 500hp, Jake, 13 Spd, Low Low Air Leaf Susp, 13/40k Axles, 3.25 Ratio, 280" WB, 113k mi



2006 Peterbilt 378 36" Sleeper Cat C-11 350hp, Jake, 8LL, Air Susp, 12/40k Axles, 4.11 Ratio, 228" WB, 134k mi



2007 Western Star 4900SA 34" Sleeper Det 14L 470hp, Jake, 10 Spd, Air Susp, 12/40k Axles, 4.11 Ratio, Quadlock, 210" WB, 54k mi



2012 Western Star 4900SA 34" Sleeper Det DD13 450hp, Jake, 10 Spd, Air Susp, 12/40k Axles, 3.90 Ratio, Quadlock, 210" WB, 27k mi



2012 Western Star 4900FA 34" Sleeper Detroit DD15 500hp, Jake, 18 Spd, Air Susp, 14/46k Axles, 228" WB, Quadlock, 58k mi



2012 Western Star 4900SA 34" Sleeper Detroit DD15 560hp, Jake, Allison 4700OFS, Air Susp, 16/46k Axles, 4.10 Ratio, 41k mi



2011 Western Star 4900SA 34" Sleeper Detroit DD15 500hp, Jake, Allison 4700RDS, 13/46k Axles, 244" WB, Wetline, 38k mi



2012 Western Star 4900SA 34" Sleeper Detroit DD15 560hp, Jake, 18 Spd, Air Susp, 14/46k Axles, 244" WB, QuadLock, 62k mi



2012 Western Star 4900SA Cummins ISX 485hp, Jake, Allison 45000RDS, Air Susp, 13/40k Axles, 4.11 Ratio, Quadlock, 26k mi



2012 Western Star 4900SA Cummins ISX 485hp, Jake, Allison 45000RDS, Air Susp, 13/40k Axles, 4.11 Ratio, Quadlock, 21k mi



1997 Ottawa Jockey Cummins 6.7L, Allison, Spring Susp, 108" WB, 43k mi



2015 Ottawa Jockey Cummins ISB 200hp, Allison, Kalmar T2, 12k mi



2019 Volvo VNR300 Volvo D13 405hp, Jake, 12 Spd Ishift, Air Susp, 12/20k Axles, 2.5 Ratio, 150" WB, Axle Lock, 737k mi



2016 Peterbilt 337 Paccar PX-9 350hp, Exhaust Brake, Allison 3000HS, Air Susp, 12/20k Axles, 4.56 Ratio, 182"WB, 468k mi



2018 Freightliner M2 Cummins L9 350hp, Exhaust Brake, Allison 3000RDS, Air Susp, 12/21k Axles, 4.56 Ratio, 148" WB, 242k mi



1990 GMC Topkick Cat 3116 215hp, 5 Spd, Spring Susp, 11/22k Axles, 158" WB, 10' Dump, 101k mi



2017 Freightliner M2 Cummins ISB 240hp, Exhaust Brake, Allison 2500RDS, Air Susp, 12/21k Axles, 204" WB, New 16' Scott, 169k mi



2004 Freightliner FL112 Cat C12 430hp, Jake, 8LL, Chalmers Susp, 20/20/46k Axles, 4.56 Ratio, Quadlock, New 24' box, 326k mi



1988 Mack MR690P E6 275hp, 6 spd, Camelback Susp, 196" WB, 19.5" grain bed, 26k mi



2000 International 4900 Grain Dump DT466, 6 Spd, Air Susp, 16' Grain Dump with tarp, 276k mi

Cab and Chassis



2007 International 7600 Cum ISM 385hp, Jake, 8LL, HMX Susp, 20/46k Axles, 204" CT, 24' of Double Frame, Fresh Overhaul, 306k mi



2014 Mack GU813 MP7 345hp, Jake, Allison 4500RDS, Camelback Susp, 20/11/38k Axles, 25' of Double Frame, 209" CT, 168k mi



2009 International 5600i Paystar Cummins ISX 500hp, Jake, 18 Spd, Chalmers Susp, 20/46k Axles, 116" CT, Quadlock, 67k mi



2018 Mack GU813 Tractor MP8 505hp, Jake, 18 Spd, Air Susp, 18/46k Axles, 3.58 Ratio, 152" CT, 220" WB, Quadlock, 308k mi



2002 Freightliner FL112 Cummins ISM 400hp, Jake, Allison, 20/52k Axles, 23' of Double Frame, 171"CT, 34k mi



1989 International S1954 DT466 240hp, 6 Spd, Spring Susp, 12/21k Axles, Stellar Hook Lift, 392k mi



2000 Mack RB688S E7 350hp, 9 Spd, Camelback Susp, 20/44k Axles, 4.42 Ratio, 132" CT, 20' of Double Frame, 52k mi



2003 Mack RD688S E7 350hp, Jake, 8LL, Camelback Susp, 16/20/46k Axles, 187" CT, 20' of Double Frame, 295k mi



2007 Western Star 4900 Detroit 12.7L 445hp, 13 Spd, Hend. Spring Susp, 20/46k Axles, 192" CT, 30' of Double Frame, 310k mi



2007 Mack GU713 MP7 370hp, Jake, Allison 4500RDS, Camelback Susp, 13/46k Axles, Double Frame, 169" CT, 58k mi, No Title



2019 Freightliner M2 Cummins L9 350hp, Exhaust Brake, Allison 3000RDS, Air Susp, 12/40k Axles, 210" CT, 4.88 Ratio, 251k mi



1997 Kenworth T800 Cat 3306, Retarder, Allison HT750DR, Aux 2 Spd Trans, Hend Spd, 14/46k Axles, 164" CT, Quadlock, 22k mi



2006 Chevrolet C8500 Cat C7 275hp, Allison, Hend. Susp, 14/40k Axles, 143" CT, 17' of L-Frame, 19k mi



2007 Mack CV713 Mack AI 350hp, Jake, 8LL, Rubber Block Susp, 18/46k Axles, 206" CT, 25' of Double Frame, 639k mi



2007 Sterling LT9500 (Non Runner) Mercedes MBE 4000 410hp, Jake, Allison 4500RDS, TuffTrac Susp, 20/46k Axles, Quadlock, 150k mi



2007 Sterling LT9500 (Non Runner) Mercedes MBE 4000 410 hp, Jake, Allison, TuffTrac Susp, 20/46k Axles, 207"CT, Quadlock



2014 Peterbilt 365 Cummins ISX12 425hp, Jake, 8LL, Air Susp, Axle Lock, 18/23k Axles, 3.91 Ratio, 155"CA, 16' of Dble Frame, 94k mi



2017 Peterbilt 337 Paccar PX-7 325hp, 6spd, Reyco Susp, 5.29 Ratio, 33k GVW, 187" CA, 22' of Frame, 141k mi



2019 Freightliner M2 Cummins B6.7 240hp, Exhaust Brake, Allison 2500RDS, Air Susp, 12/21k Axles, 5.56 Ratio, 188" CA, 260k mi



2007 Ford F750 Cat C7 7.2L 250hp, Allison 3000RDS, Spring Susp, 12/21k Axles, 120"CA, 16' of Frame, 30k mi



2000 GMC C8500 Cat 3126 210hp, Allison MD3060P, Spring Susp, 14/22k Axles, 144" CA, 6.5 Ratio, 40k mi



2007 International 4300 DT466E 245hp, 6 Spd, Spring Susp, 12/21k Axles, 4.11 Ratio, 129" CA, 13' of Frame, 42k mi



2003 International 4300 Flatbed DT466E 250hp, 10 Spd, Spring Susp, 10/23k Axles, 165" WB, 139k mi



2000 GMC C7500 Flatbed Cat 3126 210 hp, Allison MD3060, Spring Susp, 12/21k Axles, 157" WB, 79k mi



2003 Peterbilt 357 Flatbed Cat C12 335hp, Jake, 10 Spd, Air Susp, 20/46k Axles, 196" CT, Quadlock, Dble Frame, 24' Flatbed, 371k mi



1995 International 2574 Cummins M11 310hp, Hendrickson Spring Susp, 18/40k Axles, L-Frame, 169" CT, 26' Flatbed



2013 Freightliner M2 Flatbed Cum ISL 380hp, Exh. Brake, 10 Spd, TuffTrac Susp, 20/46k Axles, 189" CT, Dble Frame, 22' Bed, 223k mi



1998 Mack DM688S EM7 300hp, Jake, 6 Spd, Camelback Susp, 14/58k Axles, 200" CT, Double Frame, 24' flatbed, 236k mi



2018 Freightliner M2 Cummins ISB 260hp, Allison, 12/21k Axles, 204" CT, Reman engine, 24' Flatbed, 278k mi



2013 Freightliner M2 Cummins ISB 325hp, Exh. Brake, Allison 3000RDS, 12/21k Axles, Air Susp, 143" CT, 18' Flatbed, 30k mi



2001 International 4900 DT466 195hp, Allison MT643, Spring Susp, 26k GVW, 4.10 Ratio, 186" CT, 24' Flatbed, 135k mi



2001 International 2574 Cat C10 305hp, Retarder, Allison HD4560, Air Susp, 214" WB, 16/46k Axles, Altec 30k Boom, 11k mi



2008 Kenworth T300 Paccar PX8 330hp, Jake, 10 Spd, Reyco Susp, 14/40k Axles, 4.63 Ratio, 274" WB, Quadlock, 24' box, 265k mi



2018 Kenworth T370 Paccar PX-7 260hp, Exh. Brake, Allison 3000HS, Air Susp, 12/21k Axles, Wheel Lock, 255" WB, 24' Box, 238k mi



2017 Freightliner M2 Cummins ISL 330hp, Exhaust Brake, Allison, Air Susp, 12/21k Axles, 270" WB, 26' Box, 251k mi



2007 Mack CV713 Tanker Mack AI 427hp, Jake, 10 Spd, Hend Susp, 20/46k Axles, 275" WB, Quadlock, 4750 gal. Tank, 153k mi



2019 Hino 195 210hp Diesel, Auto Trans, Spring Susp, 19500 GVW, 174" WB, 18' Box, 124k mi



2019 Isuzu NPR 210hp Diesel, Auto Trans, Spring Susp, 14500 GVW, 156" WB, 16' Box, 172k mi



2020 Chevrolet 4500 HD Isuzu Diesel, 210hp, Auto Trans, Spring Susp, 14500 GVW, 16' box, 127k mi



1999 Sterling LT9500 Tanker Cat 3406 435hp, Jake, 8LL, Hend. Susp, 18/40k Axles, 4.11 Ratio, Quadlock, 21' Tank, 169k mi



2019 Freightliner M2 Cummins B6.7 280hp, Exh Brake, Allison 2500RDS, Air Susp, 33k GVW, 285" WB, 26' Box, Good Reefer, 211k mi



2017 Freightliner M2 Cummins ISB 240hp, Allison 2500RDS, Spring Susp, 33k GVW, 204" WB, 18' Box, Good Reefer, 141k mi



2017 Freightliner M2 Cummins ISB 240hp, Exhaust Brake, Allison 2500RDS, Air Susp, 33k GVW, 204" WB, 18' x 102" Box, 180k mi



2005 Chevrolet 2500HD LS Duramax 6.6L, 5 Spd Allison, Crew Cab, Short Bed, Gooseneck Hitch, 238k mi



2021 Diamond C 22' x 101" Tilt Deck Trailer 16k GVW, Hydraulic Tilt, Electric Brakes



1991 Ford Festiva 1.3L, 5 Spd Manual, 48k mi



2021 Chevrolet 1500 W/T 5.3L, 6 Spd Auto, 4x4, Crew Cab, Short Bed, PW, PL, PM, 21k mi



2005 Chevrolet 1500 5.3L, Auto, 4x4, Reg. Cab, Long Bed, Gooseneck Hitch, 128k mi



2005 Benson 40' Frame Type Dump Trailer
66" sides, Roll Tarp, 2-Way Tailgate, Air Susp



2009 Timpit 40' Hopper Trailer 96" Wide,
66" Sides, Air Susp, Air Weight Gauge, Roll Tarp



1985 Heil Aluminum Tank Trailer 9000 Gal,
43' x 96", Spring Susp



2008 Trail King Lowboy 43' x 102", 35 ton,
22' Well, 12" Outriggers on both sides, Air Susp



2007 Manac Trailer 40' x 102", Spring Susp,
Sliding Axles, 68k GVW



1996 Fruehauf Step Deck 48' x 102"
37" Lower, 11' Upper, Spring Susp. 93K GVW



2016 Kauffman Equip. Trailer 43' x 102"
Spring Susp, 55k GVW, Ramps for upper deck



2001 Towmaster 20 ton Tilt Deck Pintle
24' x 102", Spring Susp, Air Brakes, 48k GVW



2008 Wabash 53' x 102", Roll up Door,
Wood Floor, 68k GVW, Selling 2



2014 Great Dane 48' x 102" Wide,
Roll up Door, 68k GVW, Selling 2



1989 Eager Beaver Pintle 23' x 96", 17' Deck
w/5' Tail, 9' Ramps, Spring Susp, 25k GVW



2016 Sure-trac 20 ton Pintle 25' x 101"
20' Flat deck w/ 5' tail, Spring Susp, Air Brakes



2015 Stoughton 28' Pup Trailer Alum. Roof,
Spring Susp, 40k GVW, Selling 3



2021 Wabash Converter Dolly
Selling 2



1989 Fruehauf Converter Dolly
Selling 2



Van Body 24.5' x 96" Selling 2 units



2011 Morgan Reefer Body
26' x 96" Wide



2019 Alum Van Body 26' x 102" x 97" High
Selling 2 units



2016 Morgan Van Body 20' x 96" x 85"H,
Roll up Door, Alum Roof



2007 Custom Steel Flatbed 14' x 100"



Altec Digger Body
Model DM47BTR, 20" Auger



Terex Commander Digger Body
Model C4047, Selling 2 units



Kann Aluminum Flatbed 24' x 96" x 4' Sides
Maxon 3500lbs Column Lift Gate



2014 Custom Steel Flatbed 24' x 96"
Multiple Flatbeds Selling



Service Inc. Tank
8000 Gallon



Vacmaster SPV 500 Vac System Deutz Engine
(Runs but pump is tight), 86 hours on meter



2019 Hitachi Wheel Loader ZW150-6
JRB Quick Coupler, 1144 hrs



GEM Payloader Forks JRB Quick Coupler,
Very Nice Condition



Bridgestone M854 Steer Tires
Steel Hub Pilot Rims, 385/65R22.5



Bridgestone M864 Steer Tires
Alum. Hub Pilot Rims, 425/65R22.5



Continental HTC1 Steer Tires
Steel Hub Pilot Rims, 425/65R22.5



Hankook AM06 Steer Tires
Steel Hub Pilot Rims, 315/80R22.5



(3) B. F. Goodrich DR444 Drive Tires
11R22.5



(4) Recaps- 2 Firestone and 2 Bridgestone
11R22.5



(4) Michelin XDE Tires
11R24.5



(4) Ironman I-301 Tires
11R24.5



Stinger Uni-Spotter model 5590
with slidehammer



Spitznagel DF-505 The Maxi
Autobody Dent Puller



Skid lot of hydraulic hoses, mostly new



4 sets of power cord and hoses,
Selling several lots



Used Fire Extinguishers
Selling several lots



Skid of new tire chains Also selling
several skids of used tire chains



Tire Chain Brackets



Peterbilt Bumper Fits 389, 388, 367,
Multiple lots, Varying conditions



Western Star Bumper



Sterling Bumper



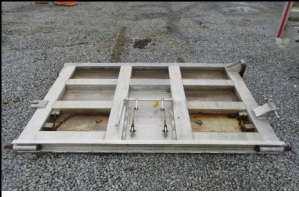
Peterbilt 367 Bumper
Set back Axle, New take-off



Kenworth T800 Bumper



Maxon Tuk-a-way lift gate
2,500 lb. capacity



Aluminum Tailgate
Top and Side Hinge, Chute



275 gal Poly Tote used hydraulic oil
Selling Appx. 8 Totes of Waste Oil



275 gal Poly Tote Old Diesel Fuel
Selling several totes of Diesel/Oil Mix



Pallet racking



Heavy Duty Bumper W/Braden Winch



Rufnek winch For Parts



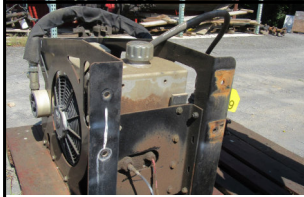
2019 Holland Kompensator 5th Wheel
Stat. Mount, Side-to-side Top Plate



Fontaine stationary 5th wheel



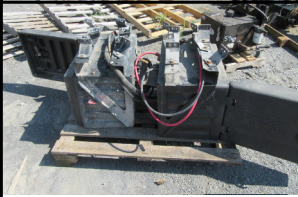
Porta-Power parts and pieces



Heavy duty oil cooler



Gardner Denver Vacuum pump



Thermo-King Mimimizer poly battery boxes,
one has controller



used Peterbilt floor mat



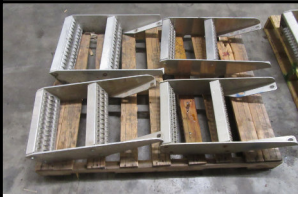
4 (2 sets) Peterbilt air cleaners
15", steel



2-person passenger seat and 2 drivers seats



4 seats, Selling several skids of
used seats














Skid of 4 New Peterbilt frame steps,
Selling several lots



Skid of 9 New Peterbilt deck plates
Selling several lots



Kenworth visors
Selling numerous lots

				
Cat C-10 Engine	Mack AI-350 Parts Engine includes ECM	Eaton 10 Speed Transmission Out of 2012 Mack, 58k mi, with Bell Housing	Eaton RTO-16908LL Transmission	Eaton RTX-167095 Transmission
				
Headache Rack	Pull Out Ramp	Meritor MP44 Rears 4.63 Ratios, Quadlock	PTOs	Pumps
				
Wet Line Kit Permo Pump Model P2100A285MDZA0754	Wet Line Kit	Hydraulic Tanks 50 Gal Steel Frame Mount 3 pcs.	Pickup Bed Toolbox Selling Several	Tool Boxes Selling Many Different Sizes, Including 4 Saddle Boxes
				
Honda Generator Model: EU2000i	Ingersoll Rand Screw Air Comp. 3 ph, With air dryers, Like new	Vanair Air Comp D902 Kubota Diesel, Runs	Ingersoll Rand Air Compressor John Deere Engine, Runs	GrimmerSchmidt Air Compressor Model E1655, Good Working Unit
				
Meritor 16k Steer Axle	Spicer Hydraulic Drive Steer Axle Selling 2 units	Fuel Tank 500 gal with containment system	Service Inc. Tank 4000 Gallon	Aluminum Rims Selling 2 skids of 8.25 x 24.5 and 2 skids 8.25 x 22.5
				
Snap-on MT3760 AVR Battery tester and charger	Hendrickson Walking Beams	HMX Suspension Frame Mounts	Kubota RTV900 4WD , Manual Dump, 1812 Hours	John Deere Gator 2WD , Kawasaki Engine
			<p>Auction Preview Days Tues. July 29: 8AM - 5PM Wed. July 30: 8AM - 8PM</p> <p>No test drives on sale day! Don't be late! Sale starts @ 9 AM. Starting Drive-thru @ approx. Noon.</p> <p>400+ lots selling - Flyer contains most of the trucks and about 1/3 of small lots</p> <p>Free water and Windy Knoll ice cream</p> <p>Not responsible for typographical errors. Not responsible for accidents. Please make your own inspection before bidding.</p>	
Kipper Tool Chest Some tools included	29" Snap-on Tool Boxes Selling several, some with tools	Tool Box Lower Box is Snap-on, Top Box is Steel Glide		
				
Payloader Quick Coupler For JRB 416 and ISO	JLG 3969 Scissors Lift Electric, 39' Platform Height, 750 lbs Capacity	Genie GR12 Manlift Electric, 12' Platform Height, 500 lbs Capacity		