



PARKER

FINE ART AUCTIONS

Fine Paintings & Frames Sale

Thursday 6th February 2025
at 11am





PARKER

FINE ART AUCTIONS

The Abbott and Holder Auction of Decorative Pictures

Timed online sale **NOW**
www.the-saleroom.com

Ends Thursday 13th February at 11am

To consign to our sales is just £10 (+VAT) per lot
Includes all commission, illustration and insurance.
No other charges

PARKER

FINE ART AUCTIONS

Hawthorn House | East Street | Farnham | Surrey | GU9 7SX

Fine Paintings & Frames Sale

Thursday 6th February 2025

Paintings starting at 11am

Frames starting at 2pm

VIEWING

Friday 31st January 10am to 4pm

Saturday 1st February 10am to 2pm

Sunday 2nd February 10am to 2pm

Monday 3rd February 10am to 4pm

Tuesday 4th February 10am to 4pm

Wednesday 5th February 10am to 4pm

Thursday 6th February from 9am

Telephone bids and absentee bids will be accepted until 9am on the day of the sale.

01252 20 30 20 | info@parkerfineartauctions.com

LIVE ONLINE BIDDING AT

the saleroom
The home of art & antiques auctions

the-saleroom.com

BID LIVE ONLINE FOR £3
PER AUCTION
easyLiveAuction.com

easyliveauction.com

Each lot subject to a buyer's premium of 25% + VAT (plus additional online bidding fees where applicable)



Key to cover illustrations

Lot 203	Lot 88	Lot 190	Lot 269	Lot 282	Lot 283	Lot 290	
Lot 52	<div>PARKER FINE ART AUCTIONS Fine Paintings & Frames Sale Thursday 6th February 2025 at 11am</div>	Lot 69		Lot 297	<div>PARKER FINE ART AUCTIONS 01252 20 30 20 info@parkerfineartauctions.com parkerfineartauctions.com</div>	Lot 298	
Lot 214		Lot 92	Lot 21	Lot 301		Lot 302	Lot 310
Lot 25			Lot 326	Lot 370		Lot 373	
			Lot 397	Lot 465		Lot 470	

Parker Fine Art Auctions Ltd

Hawthorn House, East Street, Farnham, GU9 7SX

Registered in England 12554522 VAT Registration No. 347 2406 07

All terms and conditions are on our website parkerfineartauctions.com

Please note: droite de suite is paid by the vendor



Photography by PRC Digital office@prcdigital.co.uk

Old Masters and European Paintings Pre 1850



1. John Collet (1725-1780) British
"Kitty Coaxer Driving Lord Dupe Towards Rotten Row"
Etching
Published by Carington Bowles
5.5" x 4.5" (14 x 11.4cm)
And the companion piece "Lofty Riding, or Miss Folly's Head Exalted"
And a further etching "The Harmony of Courtship" (3)
£100-£200



2. Matthias Darly (c1720-1780) British
"Tight Lacing or Hold Fast Behind"
Hand coloured etching
12.25" x 8.75" (31.2 x 22.2cm)
And another by the same hand
"Ridiculous Taste or The Ladies Absurdity"
Together with an etching after Woodward
"Lady Time Present & Lady Time Past" (3)
£100-£200



3. 18th Century English School
"The Double Disaster, or Inconvenience of Umbrellas"
Etching
12.75" x 10" (32.4 x 25.4cm)
Together with two others by various hands "A Nap After Dinner" and "The Artillery Driver" (3)
£100-£200



4. After Robert Dighton (1752-1814) British
"Mr Deputy Dumpling and Family"
Print published by Carington Bowles
5.5" x 4.5" (14 x 11.4cm)
Together with "What D'ye Think of Me" and "Up To Every Thing" (3)
£100-£200



5. After Egbert van Heemskerck (1634-1704) Dutch
"The Game of Put"
Etching
5.25" x 4.4" (13.3 x 11.1cm) together with "The Musical Cottagers" and "Age of Musick" and two other prints (5)
£100-£200



6. Louis Marie Lante (1789-1871) French
A Large Collection of Prints from "Costume de Coutances"
Engraved by Georges-Jacques Gatine
Unframed 9.5" x 6.75" (24.2 x 17.2cm) (Q)
£100-£200



7. 18th Century English School
"The Burning of W Seaman, T Carman & T Hudson at Norwich"
Engraving
5" x 3.75" (12.7 x 9.5cm)
£100-£150



8. Early 19th Century Italian School
A Design for a Fan
Watercolour and gouache
Shaped, overall 13" x 22.5" (33 x 57.2cm)
£200-£400



9. 18th Century Dutch School
Figures by a Lake
Watercolour
4.15" x 6.5" (10.6 x 16.8cm)
£150-£200



10. 19th Century English School
"Plan of The Deepdene,
The Seat of Thomas Hope Esq"
 Ink

Inscribed
 Unframed 8.75" x 7.25"
 (22.2 x 18.3cm)
£100-£150



11. Circle of Thomas Rowlandson (1756-1827) British
"Tea Just Over"

Watercolour
 Inscribed and titled
 Unframed 7.75" x 13" (19.7 x 33cm)
£100-£150



12. Early 19th Century European
Studies of a Harp
 Ink

Unframed overall 7" x 9.75"
 (17.7 x 24.7cm)
 Together with three sketches
 by other hands (4)
£100-£150



13. James Wilson Carmichael (1800-1868) British
A River Scene at Dusk

Watercolour
 Signed, inscribed and dated 1842 verso
 10 x 12.75 (25.4 x 32.3cm)
£100-£150



14. Peter de Wint (1784-1849) British
"View in Hyde Park"

Watercolour
 Inscribed on labels verso
 7" x 10.25" (17.8 x 26cm)
£150-£250



15. Early 19th Century English School
Bust Portrait of a Seated Lady
Miniature on ivory
In a hollow frame with eglomise glass
4" x 3.25" (10.1 x 8.3cm)
Cites reference: BF4B2WMM
£300-£400



16. Late 18th Century Italian School
Devotion
Oil on panel
Unframed 11.25" x 7.25" (28.5 x 18.4cm)
£100-£150



17. 19th Century European School
Still Life with Flowers in an Urn
Oil on panel
20.5" x 17.5" (52.1 x 44.4cm)
£100-£150

18. E V (19th Century) European
Still Life of Flowers in an Urn
Oil on panel
Signed with initials and dated 1869
18" x 13" (45.7 x 33cm)
£200-£300



19. Manner of Adriaen van Ostade (1610-1685) Dutch
Figures outside a Tavern
Oil on panel
In a fine carved giltwood frame
17.75" x 13.5" (45.1 x 34.3cm)
£800-£1200



20. Circle of Joshua Reynolds (1723-1792) British
Portrait of 'Hon. Lavinia Bingham', later Countess Spencer
Oil sketch on board
Inscribed on a label verso
3" x 2.5" (7.7 x 6.4cm)
£100-£200



21. Circle of Joshua Reynolds (1723-1792) British
Portrait of 'Dr Samuel Johnson'
Oil sketch on board
Inscribed on a label verso
4" x 3.25" (10.2 x 8.3cm)
£100-£200



22. Circle of Joshua Reynolds (1723-1792) British
'The Affectionate Brothers', Earl Grey, Earl of Ripon
and the Hon. Philip Robinson
Oil sketch on board
Inscribed on a label verso
5.5" x 4.75" (14 x 12.1cm)
£100-£200



23. After Nicolas Poussin
(1594-1665) French
'Venus Sleeping'
Oil on canvas
22" x 29.25" (55.8 x 74.3cm)
£300-£500



24. Circle of Jan Griffier
(1688-1773) Dutch
Figures in an Extensive Landscape
Oil on canvas
19" x 23" (48.2 x 58.3cm)
£400-£600



25. John Ferneley Junior (1814-1862) British

The 6th Dragoon Guards (Carabiniers) at Dover, with the Castle in the distance

Oil on canvas

Signed, inscribed 'Melton Mowbray & York' and dated 1848

25" x 56" (63.5 x 142.2cm)

Provenance: Captain Harry Lee Carter; thence by family descent

£8000-£12000



26. Manner of Jacob Jordaens (1593-1678) Flemish
 'The Satyr and the Peasants'
 Oil on panel
 Arched
 13.5" x 18.5" (34.3 x 47cm)
 £700-£1000



27. **John Middleton (1827-1856) British**
A Shepherd and Flock on a Country Path
 Oil on canvas
 16" x 24" (40.6 x 50.8cm)
 Provenance: R H Edgley
 £400-£600



28. **George Vincent (1796-1832) British**
Drover and Cattle in a River Landscape
 Oil on canvas
 25" x 30" (63.5 x 76.2cm)
 £500-£700

British and European Paintings Pre 1900



29. 19th Century English School
A Stormy Beach Scene
Watercolour
Indistinct monogram
Unframed 8" x 13.25" (20.3 x 33.6cm)
Together with a collection of fifteen other watercolours and prints
by various hands (16)
£100-£150



30. **James Aumonier (1832-1911) British**
A River Landscape
Watercolour
Signed and dated 1875
Unframed 6.25" x 10.75" (15.9 x 27.3cm)
Together with a watercolour of a moonlit river landscape by M Bouquet (2)
£100-£150



31. 19th Century English School
Head Studies of Boys
Watercolour
Unframed 4.75" x 5.25"
(11.4 x 13.3cm)
Together with an ink caricature (2)
£100-£150



32. **Circle of Gioacchino La Pira (1839-1870) Italian**
Fisherman off the Coast
Gouache
11.25" x 19" (28.6 x 48.2cm)
£100-£200



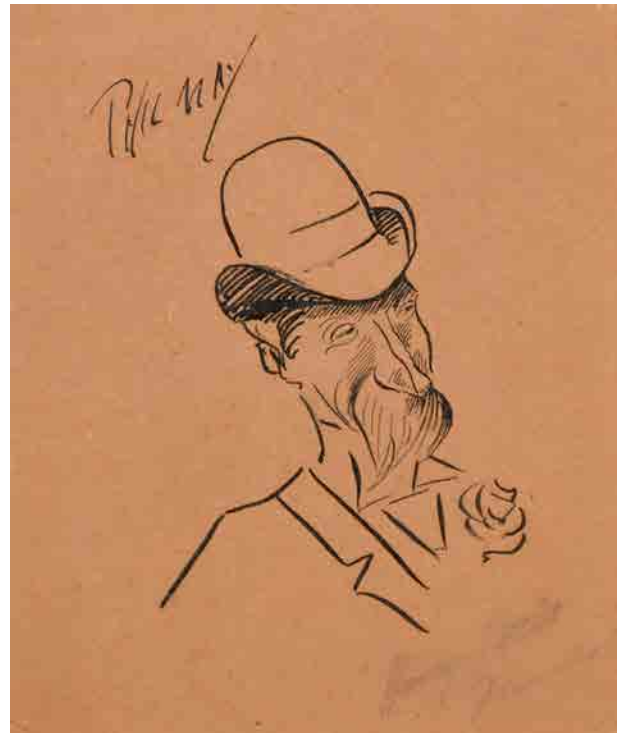
33. **John Absolon (1815-1895) British**
"Cornfield"
Watercolour
Inscribed on a label verso
8.25" x 17.5" (21.9 x 44.4cm)
£150-£250



34. Circle of Edgar Degas (1834-1917) French
A Lady Leaning by a Chair
Watercolour and pencil
Indistinctly signed
12.25" x 9.25" (31.1 x 23.5cm)
£200-£300



35. Hablot Knight Browne 'Phiz' (1815-1882) British
Portrait of a Girl with Ringlets
Watercolour and ink
Signed 'Phiz', and inscribed on a label verso
7.5" x 6" (19 x 15.2cm)
Provenance: Sabin Galleries Ltd, London
£150-£200



36. Phil May (1864-1903) British
Head Study of a Man
Ink
Signed and indistinctly inscribed in pencil
Unframed 6.75" x 5.5" (17.2 x 14cm)
And two other drawings by another hand (3)
£100-£150



37. **George Samuel Elgood (1851-1943) British**
 "Rothenburg"
 Watercolour
 Signed, and inscribed verso
 9.5" x 13.5" (24.2 x 34.3cm)
 £100-£150



38. **John Linnell (1792-1882) British**
 "Old Barn with a Lane Below"
 Watercolour and pencil
 Inscribed on labels verso
 2.75" x 4" (7 x 10.1cm)
 £100-£150



39. **Robert Charles Goff (1837-1922) British**
 "Venice"
 Watercolour
 Signed with monogram and dated 1811, and inscribed on labels verso
 4.25" x 5.85" (10.8 x 15cm)
 Provenance: Thos Agnew & Sons Ltd, London No. 45223
 And another by the same hand, "Fiesole", Watercolour, Signed, inscribed and dated 1901
 5" x 7.15" (12.8 x 18cm) (2)
 £100-£200



40. **B B (19th Century) British**
 Figures in a Continental Street Scene
 Watercolour
 Signed with initials
 6.5" x 5" (16.5 x 12.7cm)
 £100-£200



41. **Attributed to John Middleton (1827-1856) British**
 A Wooded Landscape
 Watercolour
 7.25" x 10" (18.3 x 25.4cm)
 £100-£200

42. Percy French (1854-1920) British
A Bogland Landscape
Watercolour
Signed
6.75" x 9.5" (17.1 x 24.2cm)
£500-£700



43. Carl Werner (1808-1894) German
Figures on a Riverbank
Watercolour
Signed and dated 1879
9' x 13.25' (22.8 x 33.7cm)
£300-£500



44. **William Stephen Coleman (1829-1904) British**
The Picnic
 Watercolour
 Signed
 3.5" x 5.75" (8.9 x 14.6cm)
£100-£150



45. **Carleton Grant (1858-1899) British**
"St Ives, Cornwall"
 Watercolour
 Signed and dated 1884, and inscribed verso
 21.5" x 30.5" (54.6 x 77.5cm)
£100-£200



46. **David Bates (1840-1921) British**
"The Way To The Village"
 Watercolour
 Signed, and inscribed verso
 14" x 20.5" (35.5 x 52cm)
£100-£200



47. **John Fulleylove (1845-1908) British**
"Avignon"
 Watercolour
 Signed and dated 1886, and inscribed on a label verso
 9.75" x 14.25" (24.7 x 36.3cm)
£100-£150



48. **John Farquharson (1865-1931) British**
A Highland Scene
 Watercolour
 Signed and dated 1896
 13.5" x 24.5" (34.3 x 62.2cm)
£200-£400



49. **Alfred de Breanski (1852-1928) British**
 "Glen Finlas (Finglas), Scotland, Evening"
 Oil on canvas
 Signed and dated 1871-72
 16" x 26" (40.6 x 66cm)
£600-£800



50. **Leopold Rivers (1852-1905) British**
 "The Avon near Freshford"
 Oil on canvas
 Signed, and inscribed on the slip
 20" x 30" (50.8 x 76.2cm)
£200-£300



51. 19th Century English School
Young Children with Chickens
Oil on panel
7.75" x 10" (19.7 x 25.4cm)
£200-£300



52. Eloise Harriet Stannard (1829-1915) British
Still Life of Apples, Nuts and Nutcracker with Holly
Oil on canvas
Signed and dated 1898
8.5" x 12" (21.6 x 30.5cm)
£400-£600



53. Poul Steffensen (1866-1923) Danish
Cattle Grazing
Oil on canvas
Signed
26" x 41" (66.1 x 104.2cm)
£200-£400



54. **Arthur James Stark (1831-1902) British**
 "A Quiet Nook" 'Where Coots in Rushy Dingles Hide and Moorcocks Shun the day'
 Oil on canvas
 Signed and dated 1857, and inscribed on a label verso
 18" x 25" (45.7 x 63.5cm)
 Provenance: The Bourne Gallery, Reigate
 Exhibited: Royal Academy, 1857, No.214
£800-£1200



55. **Henry Hillier Parker (1858-1930) British**
 "The Parting Day"
 Oil on canvas
 Signed, inscribed on a plaque
 30" x 45" (76.2 x 114.3cm)
£1000-£1500



56. Circle of Frank Dicksee (1853-1928) British
Head of a Young Lady
Oil on canvas laid down
Oval
16" x 12.75" (40.6 x 32.3cm)
£200-£400



57. Circle of Daniel Pasmore (1829-1891) British
'The Violinist'
Oil on canvas
Unframed 16" x 12" (40.6 x 30.5cm)
£150-£200



58. Late 19th Century European School
An Italianate Tower
Oil on canvas laid down
16" x 12" (40.6 x 30.5cm)
£100-£150



59. Arthur Stocks (1846-1889) British
Children by a Doorway
Oil on panel
Signed and dated 1872
23.5" x 16.5" (59.7 x 41.9cm)
£150-£250



60. Charles Collins (1851-1921) British

"The Coast Near Paignton"

Oil on canvas

Signed and inscribed

In a fine gilt composition frame

20" x 30" (50.8 x 76.2cm)

£1000-£1500



61. Henri Lafon (1809-1909) French
 "The Beauty Spot"
 Oil on panel
 Signed and dated '35
 10" x 8" (25.4 x 20.3cm)
 Provenance: Cooling Galleries, London
 £400-£600



62. Moritz Stifter (1857-1905) Austrian
 An Elegant Beauty
 Oil on panel
 Signed
 8.25" x 6" (20.9 x 15.2cm)
 £400-£600



63. Circle of George Frederic Watts (1817-1904) British
 Portrait of Dante Gabriel Rossetti
 Oil on canvas
 Bears initials
 Unframed 25" x 19.5" (63.5 x 49.5cm)
 £300-£400

64. **John Linnell (1792-1882) British**
Sheep in a Lane
 Oil on canvas
 Signed and dated 1863,
 and inscribed on a plaque
 19.5" x 28" (49.5 x 71.1cm)
 Notes: Listed in Alfred Story's
 catalogue raisonne 1892
£1500-£2000



65. **Henry Dawson (1811-1878) British**
"On The Ribble, Summertime"
 Oil on canvas
 Signed and dated 1867, and inscribed
 on a plaque
 29.5" x 38.5" (75 x 97.8cm)
£1200-£1800

66. Henry Schafer (1854-1915) British
 "Cologne"
 Oil on panel
 Signed with monogram and dated 1886
 10" x 8" (25.4 x 20.3cm) and a
 companion piece, a pair (2)
 £200-£400



67. Eduard Boehm (1830-1890) Austrian
 A Pair of Alpine Landscapes
 Oil on canvas
 Signed
 21' x 32' (53.3 x 81.3cm)
 Provenance: William Rivett (Gainsborough Gallery) Ltd,
 London (2)
 £300-£500



68. **Grigory Kapustin (1865-1925) Russian**

A River Scene at Dusk

Oil on canvas

Signed

11" x 21.25" (27.9 x 54cm)

£800-£1200



69. Sidney Richard Percy (1822-1886) British
"Near Moel Siabod, North Wales"

Oil on canvas

Signed and indistinctly dated

24" x 36" (61 x 91.5cm)

£4000-£6000



70. Sidney Richard Percy (1822-1886) British
"Llyn Idwal, North Wales"
Oil on canvas
Signed and dated 1885
24" x 36" (61 x 91.5cm)
Exhibited: Royal Academy, 1886, No. 387
£4000-£6000



71. **Alfred H. Vickers (1834-1919) British**
"Fernley on the Severn"
 Oil on canvas
 Signed, dated 1894 and inscribed on a plaque
 12" x 24" (30.5 x 61cm)
 Provenance: William Rivett
 (Gainsborough Gallery) Ltd, London
£200-£300



72. **Charles Low (1841-c.1920) British**
Children in a Poppy Field
 Oil on canvas
 Signed, and inscribed on a label verso
 13" x 19.5" (33 x 49.5cm)
£200-£300



73. **George Henry Jenkins (1843-1914) British**
A Man Fishing in a River Landscape
 Oil on canvas
 Signed
 18" x 36" (45.7 x 91.5cm)
£100-£200

Marine Paintings



74. **William Lionel Wyllie (1851-1931) British**
 "Anchor Instantly", 'How the Fleet comes to it's moorings'
 Etching
 Signed in pencil, and inscribed on a label verso
 3.75" x 8.5" (9.5 x 21.6cm)
£100-£150



75. **William Lionel Wyllie (1851-1931) British**
 "Dover"
 Etching
 Signed in pencil
 4.35" x 7.75" (11.2 x 19.7cm)
£100-£150



76. **William Lionel Wyllie (1851-1931) British**
 "The Wind Falls Light"
 Etching
 Signed in pencil
 4.5" x 6.5" (11.4 x 16.5cm)
£100-£150



77. **William Lionel Wyllie (1851-1931) British**
 "Medway Fisherman"
 Etching
 Signed
 6" x 9" (15.2 x 22.8cm)
£100-£150



78. **William Lionel Wyllie (1851-1931) British**
 'Liner Passing the Shimmering Sands Buoy'
 Oil on canvas
 Signed and dated 1884
 16' x 30.25' (40.6 x 76.8cm)
£800-£1200



79. **Josiah Taylor (1819-1877) British**
 "Cutter Yacht Osprey"
 Lithograph by Vincent Brooks
 14.25" x 23.75" (36.1 x 60.2cm)
 £100-£200



80. **Edward William Cooke (1811-1880) British**
 "The Wrecked Boat"
 Watercolour
 Signed and dated 1875, and inscribed in pencil verso
 7.25" x 10.75" (18.4 x 27.3cm)
 £100-£150



81. **William Anderson (1757-1837) British**
 "Shipping off the Coast", Scarborough, Yorkshire
 Watercolour
 Signed, and inscribed on labels verso
 6.5" x 8.85" (16.5 x 22.5cm)
 Provenance: Thos Agnew & Sons Ltd, London; Heather Newman, Gloucestershire
 £300-£400



82. 19th Century English School
A Pair of Shipping Scenes
Oil on panel
9" x 7.25" (22.8 x 18.4cm) (2)
£100-£200

83. Robert Bagge-Scott (1849-1925) British
"Sea Piece, Norfolk Coast"
Oil on board
Inscribed on labels verso
9.5" x 11.5" (24.1 x 29.2cm)
£250-£350



84. William Thornley (1857-1935) British
"Fishing Smacks off Deal"
Oil on canvas
Signed, and inscribed on a plaque,
and inscribed on a label verso
8" x 16" (20.3 x 40.6cm)
Provenance: Presented by Galbraith Wrightson
Limited to G. H. Parham 1978
£500-£700



Sporting and Animalia Paintings



85. **Francis Howard Spear (1902-1979) British**
"Horse Race II"

Lithograph

Signed and dated 1934 in pencil, and inscribed on a label verso
 Mounted Unframed overall 12" x 18" (30.5 x 45.7cm)

Provenance: Estate of Francis Spear

£100-£200



86. **Alfred James Munnings (1878-1959) British**

A Study of Two Runners and Riders

Etching

5" x 8.25" (12.7 x 20.9cm)

£100-£200



87. **Noel William Cusa (1909-1990) British**
"Whistling Teal"

Watercolour

Signed, and inscribed on a label verso
 12.5" x 19.25" (31.7 x 48.8cm)

Provenance: The Mall Galleries, London, 1989

£100-£150



88. Henry Harry Stannard (1844-1920) British
 "Fourteenth of February, Paired"
 Watercolour
 Signed, and inscribed on labels verso
 21.25" x 14.25" (54 x 36.2cm)
 £300-£500



89. Marjorie Cox (1915-2003) British
Head of a Terrier
Pastel
Signed
13" x 9" (33 x 22.8cm)
£100-£200



90. David Foster Pratt (1918-2010) British
"Barn Owl, May in Cornwall"
Oil on canvas laid down
Signed, and inscribed on a label verso
30" x 20" (76.2 x 50.8cm)
Provenance: The Mall Galleries, London, 1981
£100-£150



91. Attributed to Valentine Thomas Garland (1840-1914) British
'Impudence'
Oil on board
Signed with initials
Circular 6.5' x 6.5' (16.5 x 16.5cm)
£100-£150



92. Fannie Moody (1861-1948) British
Horses in a Yard
Oil on canvas
Signed and dated 1889
12" x 24" (30.5 x 61cm)
£1000-£2000



93. Vladimir Belsky (1949-2017) Russian
 "Sketch of Greyhounds"
 Oil on artist's board
 Signed in Cyrillic, and inscribed in Cyrillic verso
 8.25" x 12.75" (21 x 32.3cm)
 £100-£150



94. Irena Razumova (1999-) Russian
 A Cat
 Oil on canvas
 Signed with initials, and signed and inscribed in Cyrillic verso
 7.5" x 9.5" (19 x 24.1cm)
 £50-£80



95. Donna Crawshaw (1960-) British
 Rabbits in a Hutch
 Oil on panel
 Signed
 10.25" x 12.5" (26 x 31.7cm)
 £100-£200

96. Circle of Erskine Nichol
(1825-1904) British
Returning from the Fair
Oil on canvas
14" x 18" (35.5 x 45.7cm)
£200-£300



97. Early 19th Century English School
A Man Riding a Horse
Oil on canvas
8" x 10" (20.3 x 25.4cm)
£200-£300

Stephen Gayford



98. Stephen Gayford (1954-2015) British
"Regal Pair"

Acrylic on canvas laid down
Signed, and signed and inscribed verso
Unframed 18" x 13" (45.7 x 33cm)
£200-£300



99. Stephen Gayford (1954-2015) British
"That Time Already?"

Acrylic on canvas laid down
Signed, and signed and inscribed verso
Unframed 18" x 12" (45.7 x 30.5cm)
£200-£300



100. Stephen Gayford (1954-2015) British

Father and Son

Acrylic on canvas laid down
Signed
Unframed 12" x 18" (30.5 x 45.7cm)
£200-£300



101. Stephen Gayford (1954-2015) British
"The Old Campaigner"

Acrylic on canvas laid down
Signed, and signed and inscribed verso
Unframed, 12" x 18" (30.5 x 45.7cm)
£200-£300



102. Stephen Gayford (1954-2015) British
 "Close Comfort"
 Acrylic on canvas laid down
 Signed, and signed and inscribed verso
 Unframed 19" x 11.8" (48.2 x 30cm)
 £200-£300



103. Stephen Gayford
 (1954-2015) British
 "Jungle Gentleman"
 Acrylic on canvas laid down
 Signed, and signed and inscribed verso
 17.75" x 12" (45.1 x 30.5cm)
 £200-£300



104. Stephen Gayford (1954-2015) British
 "Wolf Trail"
 Acrylic on canvas laid down
 Signed, and signed and inscribed verso
 9" x 11.8" (22.8 x 30cm)
 £200-£300



105. Stephen Gayford (1954-2015) British
 "White Haven"
 Acrylic on canvas laid down
 Signed, and signed and inscribed verso
 Unframed 9" x 11.8" (22.8 x 30cm)
 £200-£300

British and European Paintings Post 1900



106. Max Slevogt (1868-1932) German
Portrait of Max Kruse (sculptor)
Etching
Signed in pencil by artist and sitter, and inscribed in pencil verso
Unframed 6.85" x 5.2" (17.3 x 13.2cm)
£100-£150



107. 20th Century European School
Abstract
Screenprint
Unframed 5.25" x 4.75" (13.3 x 12.1cm)
£100-£150



108. Hubert von Herkomer (1849-1914) Bavarian/British
A Lady coming out of Church
Print
Unframed 14.5" x 10.5" (36.8 x 26.7cm)
£100-£150



109. Early 20th Century Japanese School
Figures in an Interior
Print
Unframed
14.5" x 9.5" (36.8 x 24.2cm)
Together with a set of four Japanese landscapes by another hand (5)
£100-£150

Leslie Moffat Ward



110. Leslie Moffat Ward (1888-1978) British
"Liners Taking in Stores, Southampton Docks"
Lithograph
Unframed 18.5" x 13.75" (47 x 34.9cm)
£100-£150



111. Leslie Moffat Ward (1888-1978) British
"Boston Backs"
Lithograph
Signed in pencil
Unframed 12" x 7.5" (30.5 x 19cm)
£80-£120



112. Leslie Moffat Ward (1888-1978) British
"The Power House"
Lithograph
Signed, inscribed and numbered '23 of 30' in pencil
Unframed 12.5" x 10.25" (31.7 x 26cm)
£200-£300



113. Leslie Moffat Ward (1888-1978) British
"Under London Bridge"
Lithograph
Signed, inscribed and numbered '34 of 36' in pencil
Unframed 10" x 13.5" (25.4 x 34.3cm)
£200-£300



114. **Fernand Khnopff (1858-1921) Belgian**
"A Travers les Ages"
 Lithograph
 7.5" x 5.25" (19 x 13.2cm)
 Together with Henry Herbert La Thangue "Return From The Fields"
 Lithograph
 11.5" x 8.25" (29.2 x 21cm) (2)
£100-£200



115. **William Rothenstein (1872-1945) British**
Portrait of George Bernard Shaw
 Lithograph
 Inscribed by John Rothenstein to Michael Parkin and dated 16.11.82
 14.25" x 9.25" (36.2 x 23.5cm)
 Provenance: John Rothenstein; Michael Parkin Fine Art
£100-£200



116. **Evelyn May Gibbs (1905-1991) British**
"The West Garden"
 Etching
 Signed and dated 1931 in pencil
 7.5" x 7.5" (19 x 19cm)
 Provenance: The Artist's Studio; Liss Fine Art
£100-£200

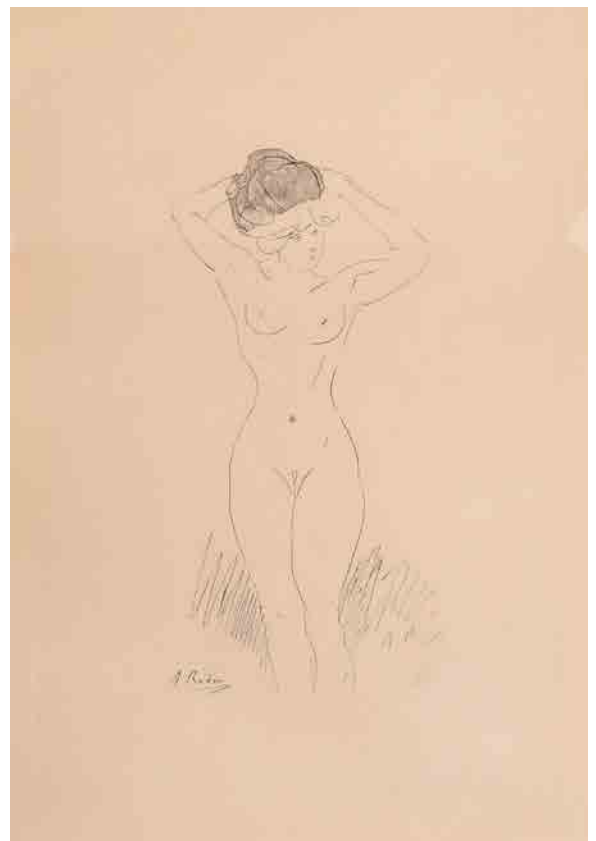


117. **Franz Hofer (1885-1915) Austrian**
"Jesus and his Disciples"
 Print
 Signed and dated 1912 in pencil
 38.5" x 40" (97.8 x 101.6cm)
£200-£300

118. **Margaret Barnard (1898-1992) British**
"Lovers"
 Linocut
 Signed, numbered 5/50 and dated 1934 in pencil,
 and inscribed on a label verso
 10.25" x 13.25" (26 x 33.7cm)
 Provenance: Michael Parkin Fine Art Ltd, London
 £600-£800



119. **Georges Rouault (1871-1958) French**
'Portrait of the Lady, in Profile' (1928)
 Etching
 11.75" x 7.5" (29.8 x 19cm)
 £200-£300



120. **Auguste Rodin (1840-1917) French**
'Nude Study'
 Lithograph
 15.5" x 11" (39.3 x 27.9cm)
 £250-£350



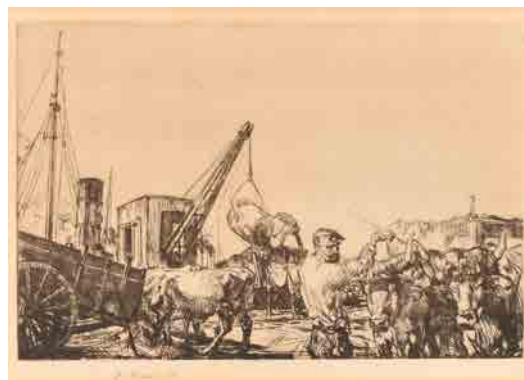
121. 19th-20th Century European School
A Biplane
Print
Mounted, unframed
6.25" x 8.25" (15.8 x 20.9cm)
£100-£150



123. R Arnold (20th Century) European
Figures at a Street Bar in an Art Deco Style
Linocut
Signed and dated 1935
6.25" x 6.5" (15.8 x 16.5cm)
£100-£200



125. Elyse Ashe Lord (1900-1971) British
"Instruction"
Drypoint in colour
Signed and numbered 33/100 in pencil, and inscribed on a label verso
10" x 13.5" (25.4 x 34.2cm)
£100-£200



122. Edmund Blampied (1886-1966) British
"San Sebastian, Harbour Scene"
Etching
Signed
7.75" x 11.5" (19.6 x 29.3cm)
£100-£150



124. Margaret Barnard (1898-1992) British
"The Cove"
Linocut
Inscribed on a label verso
8.5" x 12" (21.6 x 30.5cm)
Provenance: Michael Parkin Fine Art Ltd, London;
Michael Palmer, October 1985
£250-£350



126. Gwen Raverat (1885-1957) British
"Elms by a Pond"
Wood engraving of an edition of 75
Inscribed on a label verso
4" x 5" (10.1 x 12.7cm)
And another by the same hand, "Pieta" (2)
£100-£200

127. **Gabriel Couderc (1905-1994) French**
 "Cargo Ship in Sete"
 Printed for The Baynard Press for Schools Prints Ltd
 Unframed 17.25" x 27" (43.7 x 68.6cm)
 £100-£150

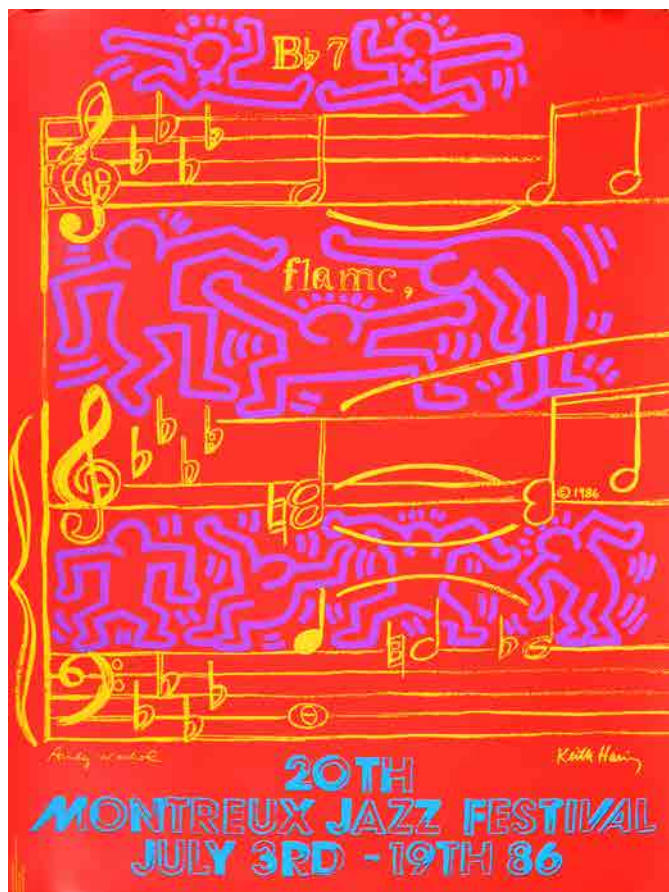


128. **Felix Kelly (1914-1994) New Zealander**
 "Drifter and Paddle Steamers"
 Printed for the Baynard Press for Schools Prints Ltd
 Unframed 16.5" x 27" (41.8 x 68.6cm)
 £100-£150



129. **Mary Potter (20th Century) British**
 A Windswept Landscape
 Silkscreen
 Signed and dated '71
 Unframed (overall) 26" x 34" (66 x 86.4cm)
 £100-£150





130. After Andy Warhol (1928-1987) American
 "20th Montreux Jazz Festival, 1986"
 Poster by Keith Haring
 Unframed 39.25" x 27.5" (99.7 x 69.8cm)
 £200-£300



131. David Hockney (1937-) British
 Still Life
 Print
 30" x 22.5" (76.2 x 57.1cm)
 £250-£350



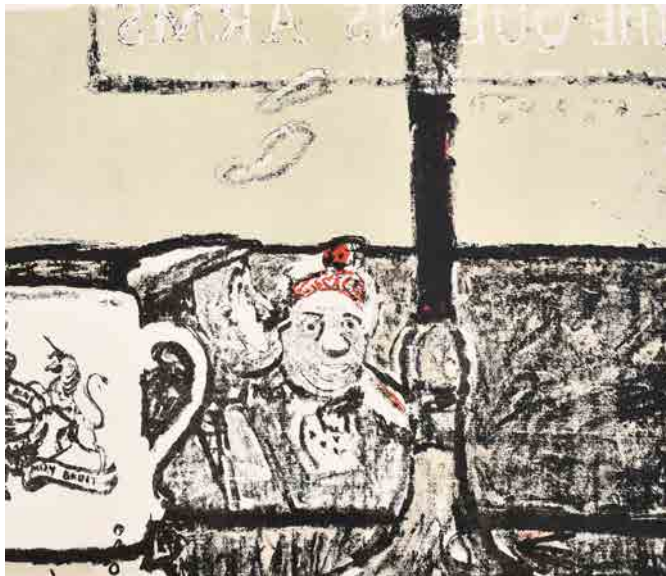
132. David Hockney (1937-) British
 "Diver"
 Poster for Olympische Spiele Munchen 1972
 Unframed overall 40" x 25.25" (101.6 x 64.2cm)
 £700-£1000



133. David Bethel (1923-2006) British
"Cock and Weathercock"
Linocut
Signed, inscribed, numbered 9/32 and dated '87 in pencil
15" x 24" (38.1 x 61cm)
£100-£150



134. Alison Milner-Gulland (20th-21st Century) British
'Geese'
Lithograph
Signed in pencil
14" x 22.5" (35.5 x 57.1cm)
£80-£120



135. Ruskin Spear (1911-1990) British
'Man at Bar' from the Coronation Suite
Lithograph
Signed and dated 1953 in pencil
Unframed 12" x 17" (30.5 x 43.2cm)
£200-£300



136. Karel Appel (1921-2006) Dutch
"Cat Suite"
Serigraph
Signed and numbered 55/125 in pencil
22" x 30" (55.8 x 76.2cm)
£200-£300



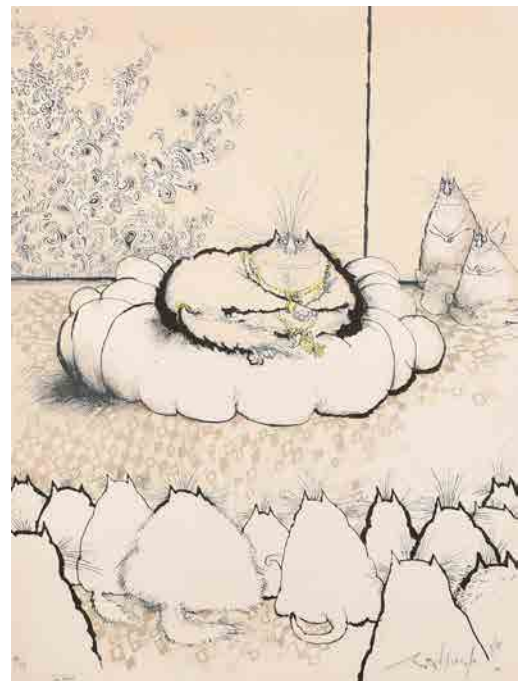
137. 20th Century European School
Head Studies
Etching
Indistinctly signed, inscribed P/T 2/3 and dated '94
7.75" x 7.75" (19.8 x 19.8cm)
And another by the same hand (2)
£100-£150



138. Shepard Fairey (1970-) American
"Make Art Not War"
Poster
Unframed overall 36" x 24" (91.5 x 61cm)
Together with another work by the same hand, "Liberte, Egalite, Fraternite" (2)
£200-£300



139. Miriam Hale (20th Century) British
"Ballade 8"
Lithograph
Signed, inscribed, numbered 11/40 and dated '80 in pencil
Overall 25" x 17.25" (63.5 x 43.7cm)
£100-£150



140. Gerald Scarfe (1936-) British
"The Guru"
Serigraph
With printers guild stamp, Signed, inscribed and numbered 41/99
25.5" x 19.5" (64.8 x 49.5cm)
£200-£300



141. **Edgar Holloway (1914-2008) British**
"Ditchling"
 Etching
 Signed, inscribed and numbered 13/75 in pencil
 8.25" x 11.5" (20.9 x 29.2cm)
 £100-£150



142. **Gwenda Morgan (1908-1991) British**
"Country Calendar"
 Woodcut
 Signed, inscribed and numbered 29/50 in pencil
 5" x 3.75" (12.7 x 9.5cm)
 £100-£200



143. **Marc Chagall (1887-1985) Russian/French**
"Chagall" by Werner Haftmann
 Book, together with six other books on Freud (2), Bacon, Klee, Delacroix and British Paintings (7)
 £40-£60



144. **William Thomas Wood (1877-1958) British**
"Winter Scene, Dedham"
 Watercolour and pencil
 Signed and dated 1930, and inscribed on labels verso
 10.5" x 14" (26.7 x 35.5cm)
 Provenance: The Ruskin Gallery Ltd; Chris Beetles Limited, London
 £100-£150



145. **Cecil Arthur Hunt (1873-1965) British**
"Quinag-Kylescu"
 Watercolour and pencil
 Signed and inscribed, and inscribed on a label verso
 11" x 14.25" (27.8 x 36.1cm)
 Provenance: The artist's family; Chris Beetles Limited, London
 £100-£150

146. George Bissell (1896-1973) British
 "Woodmen"
 Watercolour
 Signed, and inscribed verso
 14" x 12" (35.5 x 30.5cm)
 £300-£400



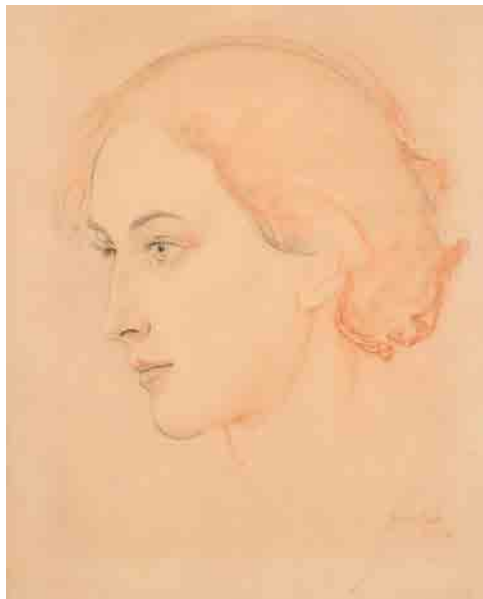
147. George Bissell (1896-1973) British
 Naked Couple
 Watercolour
 Unframed 12.25" x 18.25" (31.1 x 46.2cm)
 £100-£150



148. George Bissell (1896-1973) British
 "Miner"
 Ink
 Signed, and inscribed on a label verso
 7.25" x 9.25" (18.4 x 23.4cm)
 Provenance: England & Co, London
 £200-£300



149. George Bissell (1896-1973) British
 "Seam End"
 Watercolour
 Signed, and inscribed verso
 6.5" x 8" (16.5 x 20.3cm)
 £300-£400



150. **Imre Goth**
(1893-1982) Hungarian
Profile of a Lady
Pencil and sanguine
Signed and dated 1928
14.25" x 11.5"
(36.1 x 29.1cm)
£100-£200



151. **Imre Goth** (1893-1982) Hungarian
'Lady Reclining'
Watercolour and pencil
Signed and dated 1928, and inscribed verso
12" x 17.25" (30.5 x 43.8cm)
Provenance: Sullivan Fine Art, London
£150-£250



152. **Henri Lebasque** (1865-1937) French
'Femme Lisant'
Watercolour and pencil
Signed in pencil
Mounted unframed 9.25" x 12.75" (23.5 x 32.3cm)
£150-£250



153. **Arthur Reginald Smith** (1872-1934) British
'Threshfield'
Watercolour
Signed, and inscribed on labels verso
8" x 13" (20.3 x 33cm)
£300-£400

154. **Frank Brangwyn (1867-1956) British**
 "On the run for the World's Freedom"
 Pencil and charcoal
 Inscribed
 15" x 20" (38.1 x 50.8cm)
 Notes: A design for a US recruitment poster
 £300-£400



155. **Henry J Hunt (19th-20th Century) British**
 The Artist
 Pencil
 Signed
 12.5" x 13.75" (31.7 x 34.8cm)
 £150-£200



156. **Elliott Seabrooke (1886-1950) British**
 Study of Biblical Figures
 Pastel
 8.75" x 13" (22.2 x 33cm)
 £100-£150

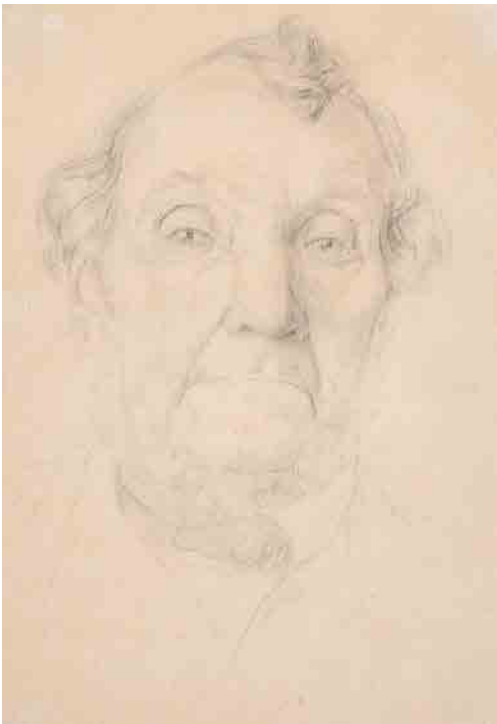




157. Early 20th Century English School
Westminster Abbey
Watercolour
Indistinctly signed in pencil
Unframed 7" x 7" (17.7 x 17.7cm)
£100-£150



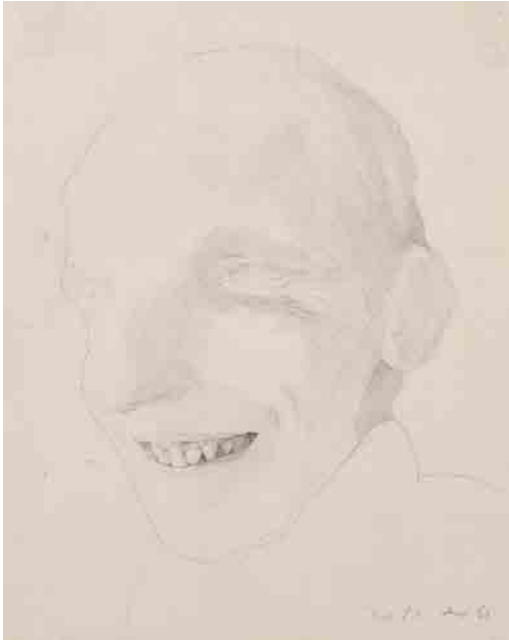
158. Marco Empis (19th-20th Century) European
Head Study of a Man
Pencil
Unframed 7.25" x 4.5" (18.3 x 11.4cm)
£100-£150



159. Charles Fairfax Murray (1849-1919) British
Portrait of Mr Mason
Pencil
Inscribed on a label verso
9" x 6.25" (22.8 x 15.8cm)
£100-£200

160. Augustus John
(1878-1961) British
A Study of Figures
Pencil
Inscribed verso
7.5" x 4.5" (19 x 11.4cm)
And another by the same hand (2)
Notes: Taken from the artist's
sketch book
£100-£150





161. Patrick Procktor (1936-2003) British
"Self-Portrait"

Pencil

Signed with initial, inscribed and dated June 65 in pencil
10" x 8" (25.4 x 20.3cm)

Provenance: The Redfern Gallery Ltd, London, 6th May 1967; Mrs Roboz
£150-£200



162. Attributed to Charles Ricketts (1866-1931) British
"Design for Salome"

Watercolour

Signed with initials, and inscribed in pencil
12.75" x 11.25" (32.4 x 28.6cm)

£200-£300

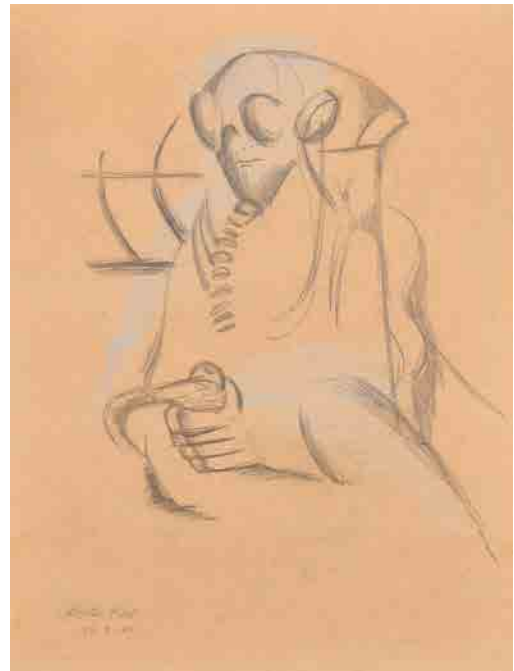


163. Attributed to Georges Lepape (1887-1971) French
Vogue

Watercolour

Signed in pencil, and inscribed on a label verso
Overall 14.75" x 10.75" (37.4 x 27.3cm)

Notes: Believed to depict Sonia Delaunay
£200-£300



164. Joseph Robinson (1910-1986) American
"Fighter Pilot"

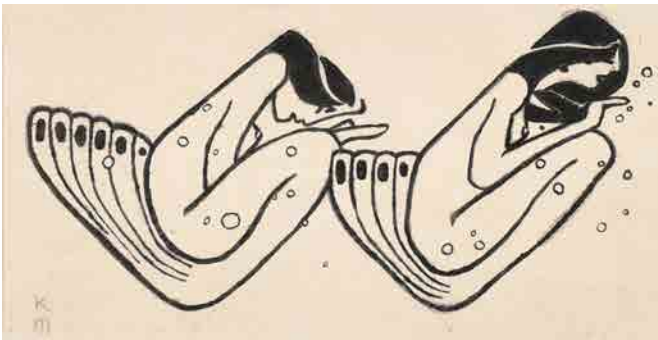
Pencil and chalk

Inscribed and dated 29.8.42
16" x 12.5" (40.6 x 31.8cm)

£100-£200



165. Circle of Stanley Spencer (1891-1959) British
Sketch of a Mother and Child
Pencil
6" x 4.25" (15.2 x 10.8cm)
£100-£200



167. Circle of Koloman Moser (1868-1918) Austrian
An Art Deco Design
Ink
Bears initials
4" x 7.5" (10.1 x 19cm)
£200-£300



166. Attributed to James Fitton (1899-1982) British
Figure Studies
Watercolour and pencil
Inscribed on a label verso
Mounted, unframed 7.5" x 4.75" (19 x 12cm)
Provenance: The Estate of Francis Spear (a contemporary
of Fitton at Central School of Arts in the early 1930's)
£100-£150



168. Mary Millar Watt (1924-2023) British
Study of a Young Boy, circa 1940
Sanguine
Signed in pencil, and inscribed verso
18" x 12" (45.7 x 30.5cm)
Provenance: From the artist's estate
£100-£150



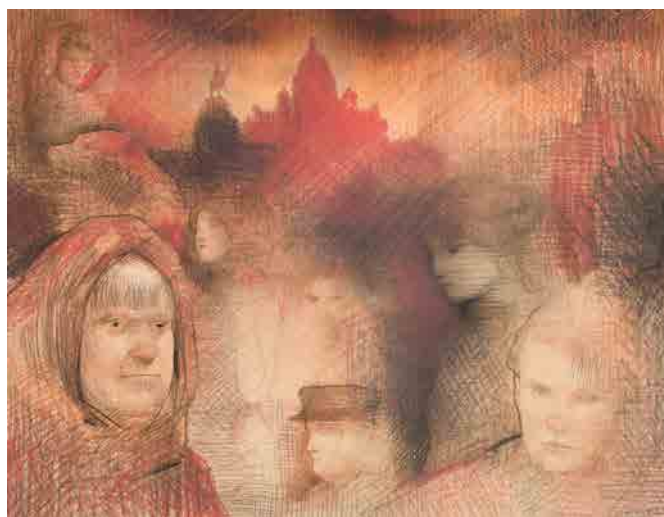
169. 20th-21st Century European School
Figure Playing a Lute
Gouache
Indistinctly Signed and dated '07
20.5" x 15" (52.1 x 38.1cm)
£200-£300



170. Eve Disher (1894-1991) British
Head of a Man
Gouache
Signed in pencil, and believed to be inscribed 'Jamaica' verso
(now framed)
20.5" x 18" (52.1 x 45.7cm)
£200-£300



171. Adrian George (1944-2021) British
"Black Flower 11"
Crayon and pencil
Inscribed on a label verso
24.5" x 19.25" (62.2 x 48.9cm)
Provenance: Francis Kyle Gallery, London
£100-£200



172. Adrian George (1944-2021) British
Head Studies
Crayon and pencil
19.25" x 25" (48.9 x 63.5cm)
£100-£200

Percy Drake-Brookshaw



173. Percy Drake-Brookshaw (1907-1993) British
"Bottom of Church Hill"

Linocut

Signed, inscribed with title and artist's proof and dated '91 in pencil

Unframed 11.75" x 9.25" (29.8 x 23.5cm)

£100-£150



174. Percy Drake-Brookshaw (1907-1993) British
"Nine Lives (5)"

Woodblock

Signed, inscribed with title and Myas and dated 1971

Unframed 12.25" x 18.5" (31.1 x 47cm) and four others by the same hand (5)

£200-£300



175. Percy Drake-Brookshaw (1907-1993) British
"Trees Near Myas"

Woodcut

Signed, inscribed, inscribed 'artist proof' and dated '81 in pencil

Unframed 9.5" x 11.75" (24.1 x 29.7cm)

And another woodcut and four prints by the same hand (6)

£100-£200



176. Percy Drake-Brookshaw (1907-1993) British
"Fishing Boats"

Linocut

Signed and inscribed

Mounted unframed 9.75" x 12.25" (24.8 x 31cm)

And another by the same hand (2)

£100-£200



177. Percy Drake-Brookshaw (1907-1993) British

Design for a Rugby Poster

Watercolour

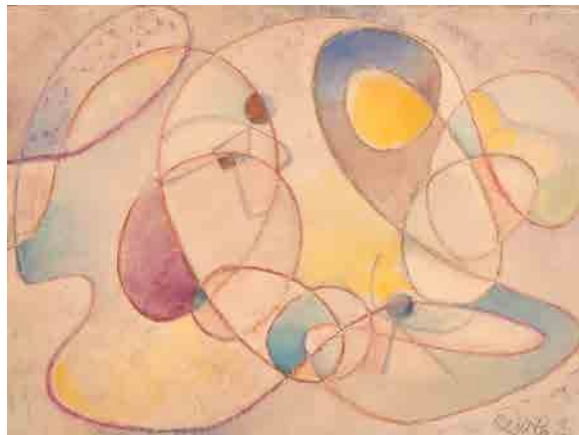
Artist studio label verso

Unframed 7" x 8.25" (17.8 x 20.9cm)

£200-£300



178. George Hooper (1910-1994) British
A Rocky Shore
Watercolour
Signed
13.5" x 19" (34.3 x 48.2cm)
£100-£150



179. Paul Knothe (1897-1988) German
Abstract
Watercolour
Signed and dated '60
14" x 18.5" (35.5 x 47cm)
And two others by the same hand (3)
£100-£200

180. Mary Potter (1900-1981) British
"The Window"
Watercolour
Inscribed verso
3" x 4.5" (7.7 x 11.5cm)
£150-£200



181. Ed Smith (1923-1988) British
'Red Houses'
Gouache
Signed verso
Mounted unframed 20.25" x 29" (51.4 x 73.7cm)
And another by the same hand (2)
£300-£400





182. Roy Hammond (1934-) British
 "Homeward Bound-Charing Cross, London"
 Watercolour and bodycolour
 Signed and dated '98, and inscribed on a label verso
 5.25" x 8" (13.3 x 20.3cm)
 Provenance: Chris Beetles Limited, London
£100-£150



183. Lesley Fotherby (1946-) British
 "Snowstorm, Cley Beach, Norfolk"
 Watercolour and bodycolour
 Signed in pencil, and inscribed on a label verso
 14.5" x 21.75" (36.8 x 55.2cm)
 Provenance: Chris Beetles Limited, London
£100-£200



184. Daud Magomedovich Akhriev (1959-) Russian
 "Sunlit Pergola"
 Watercolour
 Signed and dated 2012, and inscribed on a label verso
 10" x 13.75" (25.4 x 34.8cm)
 Provenance: Chris Beetles Limited, London
£100-£150



185. Lucy Willis (1954-) British
 'Plums'
 Watercolour
 Signed and dated 2004, and inscribed on a label verso
 12.5" x 20" (31.7 x 50.8cm)
 Provenance: Curwen Gallery, London
£100-£200



186. 20th Century European School
 Torso
 Mixed media
 32" x 40" (81.3 x 101.6cm)
£100-£150



187. David Rose (1871-1964) British
 "In a Tunisian Street"
 Watercolour
 Signed, and inscribed on a label verso
 9.25" x 13.25" (23.5 x 33.7cm)
 And another by the same hand, "Normandy Town" (2)
 Provenance: The Studio Gallery, Frant, Sussex
£100-£150



188. **Donald Greig (1916-2009) British**
 "Low Tide, Customs Quay, Salcombe"
 Watercolour
 Signed, and inscribed on a label verso
 14.25" x 21.5" (36.2 x 54cm)
 £100-£200



189. **Mildred E Eldridge (1909-1991) British**
 "Whitethroat"
 Watercolour
 Signed and inscribed in pencil, and inscribed on a label verso
 10.5" x 9" (26.7 x 22.8cm)
 Provenance: Abbott & Holder, London
 £100-£150



190. **Vivian Pitchforth (1895-1982) British**
 "The Medway, Rochester"
 Watercolour
 Signed and dated '37, and inscribed on labels verso
 19.5" x 24" (49.5 x 61cm)
 Provenance: F. M. S. Winand Exhibitions: Empire Art Loans Collections Society, London 1953; Wildenstein & Co Limited, London
 £800-£1200



191. **Raphael Nelson (1898-1968) British**
 Still Life with a Cottage Loaf and Jar
 Oil on canvas
 Signed
 16" x 20" (40.6 x 50.8cm)
 £300-£400



192. **Stuart Scott Somerville (1908-1983) British**
Portrait of Joyce Mably Garland (nee Perry)
Oil on canvas
Signed and dated 1932, and inscribed verso
22" x 18.25" (55.8 x 46.3cm)
Notes: Joyce Perry (1908-2007) was an opera singer
£100-£200



193. **Anthony Devas (1911-1958) British**
A Seated Nude
Oil on canvas
Signed
20" x 16" (50.8 x 40.6cm)
£100-£200



194. **Amy Watt (1900-1956) British**
"Flower Piece"
Oil on board
Signed, and inscribed on labels verso
14.25" x 9.75" (36.2 x 24.8cm) exhibited at Church Street Gallery,
Lavenham (no.20)
Together with a watercolour of flowers by the same hand (2)
Provenance: From the artist's estate
£100-£200



195. **Henri Charles Angeniol (1870-1959) French**
"Zinnias"
Oil on panel
Signed, and inscribed on a label verso
18" x 15" (45.7 x 38.1cm)
Exhibited: Societe Des Arts du Forez
£100-£150



196. Herman Henry Yeatman 'Hal' Woolf (1902-1962) British
"Street Scene, Paris"

Oil on panel

Signed and dated 29, and inscribed on labels verso

21.75" x 17.5" (55.3 x 44.4cm)

£200-£300



197. Edmond Xavier Kapp (1890-1978) British
The Glass Table

Oil on canvas

Signed, and inscribed on labels verso

22.5" x 17" (57.2 x 43.2cm)

Provenance: Leicester Galleries, London; Stella Churchill; Ruth Plant
£300-£400



198. 20th Century Brazilian

A Study of Boats

Oil on board

8.5" x 2.25" (20.3 x 5.7cm)

£100-£150



199. Fritz Wagner (1896-1939) German
"Portrait of an Old Man smoking a Cigar"

Oil on panel

Signed, and inscribed on a label verso

7.5" x 5.5" (19.1 x 14cm)

£400-£600



200. Edmund Dulac (1882-1953) French
 'Portrait of the Artist's Grandmother'
 Oil on canvas
 Signed and dated 'MDCCCCII', and inscribed on a label verso
 20.5" x 15" (52.1 x 38.1cm)
 Provenance: The Fine Art Society, London 1979
 £500-£700



201. John William Schofield (1865-1944) British
 A Young Girl Reading
 Oil on canvas
 Signed
 30" x 24" (76.2 x 61cm)
 £300-£500



202. Early 20th Century English School
 A Seated Lady
 Oil on canvas
 36" x 26" (91.5 x 66cm)
 £200-£400



203. Attributed to Charles Giron (1850-1914) French

At The Ballet

Oil on canvas

Signed, and inscribed 'A l'ami Roger, Souvenir d'une France'

22" x 18" (55.8 x 45.7cm)

Notes: This is believed to be a portrait of Victor Roger (1853-1903), a French composer

£800-£1200

204. **Fred Whitehead (1853-1938) British**
 "Cubington Church"
 Oil on canvas
 Signed, and inscribed verso
 10" x 8" (25.4 x 30.3cm)
£200-£300



205. **Fred Whitehead (1853-1938) British**
 "Hazeland"
 Oil on panel
 Signed, inscribed and dated 13 March, and inscribed and dated verso
 7" x 11" (17.8 x 28cm)
£200-£300

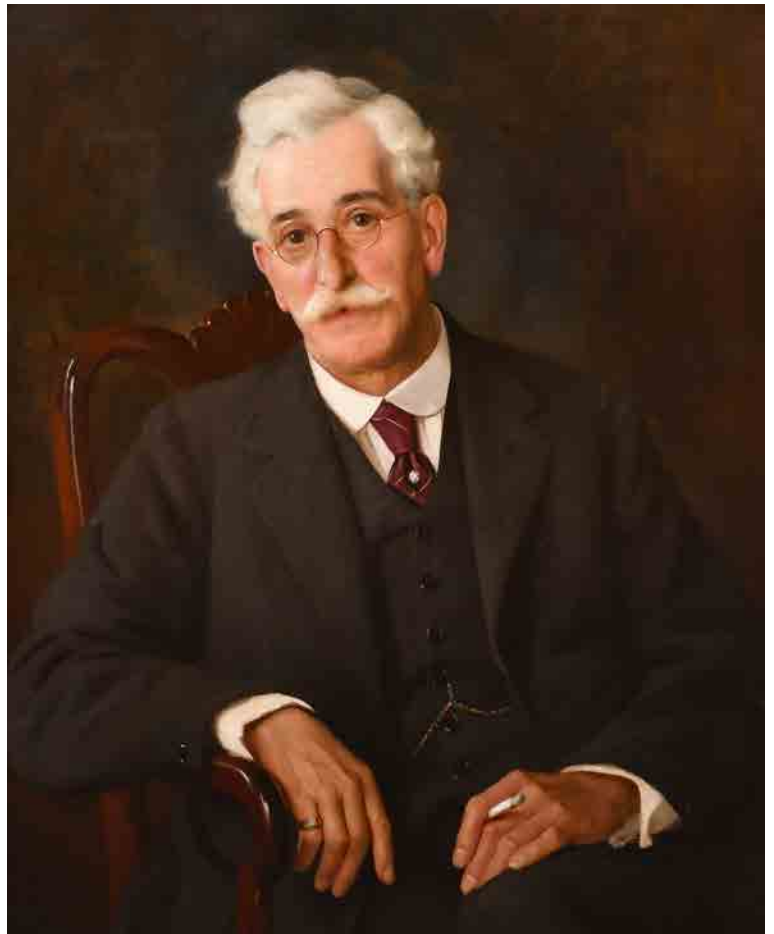


206. **Bernard Sickert (1862-1932) British**
 "Beechwood in Spring"
 Oil on canvas
 Inscribed on the stretcher
 20" x 24" (50.8 x 61cm)
 Notes: Given by the artist to his neighbour in Buckinghamshire,
 Hugh Wallis Chapman; thence by descent
£200-£300

Charles Spencelayh



207. Charles Spencelayh (1865-1958) British
'The Duckling'
Watercolour
Signed
7" x 6" (17.8 x 15.2cm)
£1500-£2500



208. Charles Spencelayh (1865-1958) British
'Portrait of Mr Hilton'
Oil on canvas
Signed and dated 1923
30" x 25" (76.2 x 63.5cm)
Notes: Noakes, catalogue raisonnee, No.149,
illustrated on page 63 of the catalogue
£1000-£1500



209. J Ganet (20th-21st Century) European
Still Life of Flowers in a glass vase
Oil on canvas
Signed
30" x 40" (76.2 x 101.6cm)
£100-£150



210. Margaret Green (1925-2003) British
"The East Wind"
Oil on board
Signed verso and inscribed on a label verso
6" x 5" (15.2 x 12.7cm)
£100-£150



211. Margaret Green (1925-2003) British
A Lady in a Garden
Oil on canvas
Unframed 25" x 30" (63.5 x 76.2cm)
£100-£200



212. Lionel Bulmer (1919-1992) British
Flower Design
Oil on canvas laid down
Unframed 20" x 30" (50.8 x 76.2cm)
£100-£200

Richard Hayley Lever



213. Richard Hayley Lever (1876-1958)
American/Australian
Harbour Scene
Oil on board
Signed
6.75" x 9.5" (17.1 x 24.1cm)
£800-£1200



214. Richard Hayley Lever (1876-1958)
American/Australian
Boat at Anchor
Oil on canvas
Signed
12" x 14" (30.5 x 35.5cm)
£500-£800



215. Circle of Frederick Hall (1860-1948) British
 Returning from the Fields
 Oil on canvas
 Bears signature verso
 16" x 22" (40.6 x 55.8cm)
 £200-£300



216. Gabriel de Jonge (1913-2004) Dutch/South African
 "Kloof Koue Bokkeveld"
 Oil on canvas
 Signed, and inscribed verso
 27" x 40" (68.6 x 101.6cm)
 £200-£300



217. Alfredo Palmero de Gregorio (1901-1991) Spanish/French
 A Parisian Street Scene
 Oil on canvas
 Signed, and inscribed on a label verso
 25.5" x 31.75" (64.8 x 80.7cm)
 £200-£300

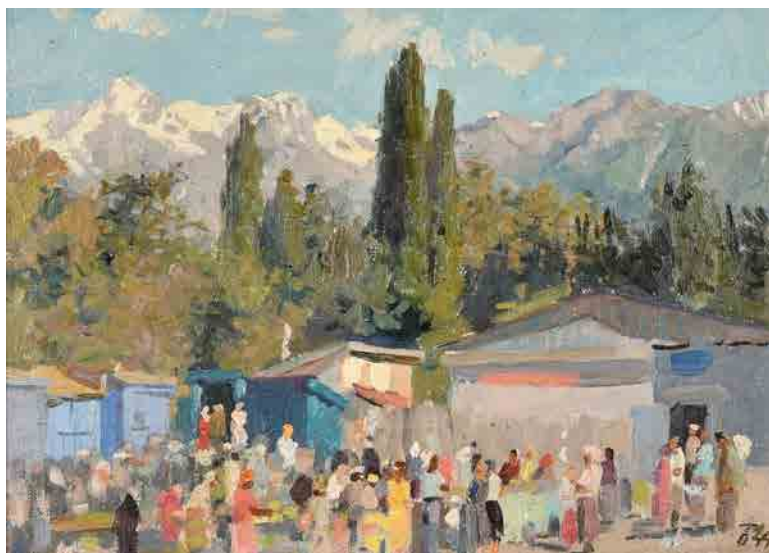
218. Viktor Fedorovitch Vassine (1919-1997) Russian
 "Sailors"
 Oil on board
 Signed in Cyrillic and dated 60, and inscribed in pencil verso
 16.75" x 25.5" (42.5 x 64.8cm)
 £200-£300



219. Viktor Fedorovitch Vassine (1919-1997) Russian
 "Midday Rest"
 Oil on board
 Signed in Cyrillic and dated '62, and inscribed in pencil verso
 25.5" x 32" (64.7 x 81.2cm)
 £300-£400



220. Nikolai Feodorovich Bortnikov (1916-1989) Russian
 "Bazaar"
 Oil on canvas
 Signed with initials and dated '49, and inscribed in Cyrillic verso
 11.25" x 15.75" (28.6 x 40cm)
 £200-£300





221. **Konstantin Razumov (1974-) Russian**
 "Dress Up Stockings"
 Oil on canvas
 Signed in Cyrillic, and signed and inscribed in Cyrillic verso
 13" x 8.75" (33 x 22.2cm)
 £2000-£3000



222. Konstantin Razumov (1974-) Russian
 "Near The Window"
 Oil on canvas
 Signed in Cyrillic, and signed and inscribed in Cyrillic verso
 18.25" x 10.75" (46.3 x 27.2cm)
 £2000-£3000



223. Vladimir Belsky (1949-2017) Russian
 "Chickens"
 Oil on canvas
 Signed in Cyrillic, and inscribed in Cyrillic verso
 10.5" x 13.75" (26.7 x 35cm)
 £80-£120



224. Vladimir Trofimovich Skriabin (1927-1989) Russian
 "Artist Sketching"
 Oil on board
 Signed with initials, and inscribed in pencil in Cyrillic verso
 13" x 19" (33 x 48.2cm)
 £100-£150



225. Nikolai Feodorovich Bortnikov (1916-1989) Russian
 "Summer Day"
 Oil on board
 Signed with initials, and inscribed in pencil in Cyrillic verso
 6" x 8.5" (15.3 x 21.6cm)
 £70-£100



226. Vladimir Trofimovich Skriabin (1927-1989) Russian
 "Winter Plein Air"
 Oil on board
 Signed with initials, and inscribed in pencil in Cyrillic verso
 13" x 17.5" (33 x 44.4cm)
 £150-£200



227. Vladimir Trofimovich Skriabin (1927-1989) Russian
 "Street in Gurzuf"
 Oil on board
 Signed with initials, and inscribed in Cyrillic verso
 19.25" x 27.75" (48.9 x 70.5cm)
 £200-£300

228. Konstantin Alexandrovitch Prokhorov
(1924-1997) Russian
"By the Old Fortress"
Oil on canvas
Signed in Cyrillic, and signed and inscribed in
Cyrillic verso
31.5" x 50" (80 x 127cm)
£400-£600

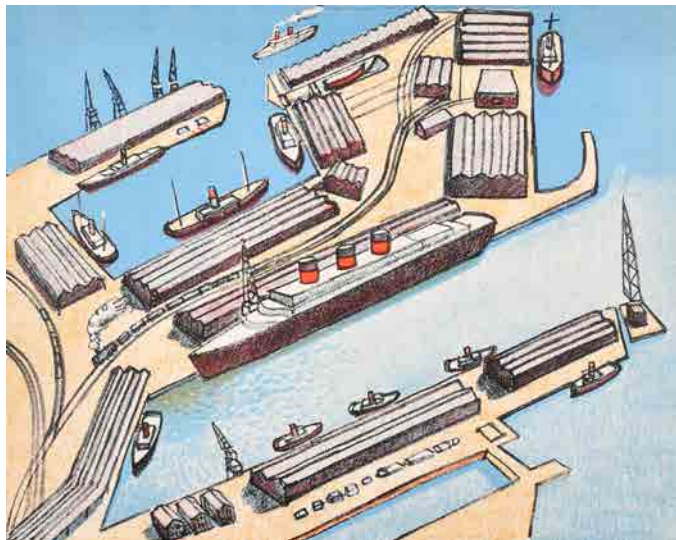


229. Vitali Timofeevich Davidov
(1923-2007) Russian
"In the Port"
Oil on canvas
Signed and dated 1965 in Cyrillic, and signed,
inscribed and dated 1965 in Cyrillic verso
29" x 59" (75 x 150cm)
£400-£600



230. Vitali Timofeevich Davidov
(1923-2007) Russian
"Ships in Port"
Oil on canvas
Signed and dated 1979 in Cyrillic, and signed,
inscribed and dated 1981 in Cyrillic verso
29.25" x 59" (74.5 x 150cm)
£400-£600





231. **Brynhild Parker (1907-1987) French**
 Aerial View of a Working Harbour
 Lithograph in colours
 8" x 10" (20.3 x 25.4cm)
 Provenance: From the artist's family
 £100-£200

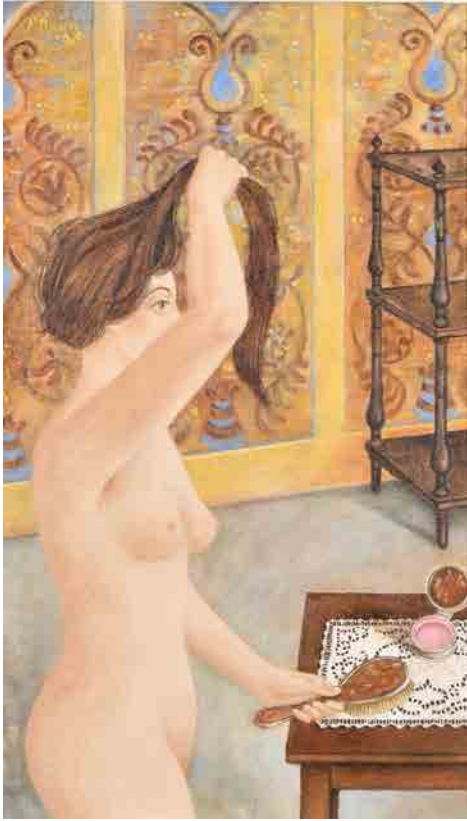


232. **Phyllis Parker (1910-1991) British**
 "View From No.57 Myddleton Square, Clerkenwell"
 Oil on artist's board
 Inscribed verso and on a label verso
 9.75" x 11.75" (24.8 x 29.8cm)
 Provenance: From the artist's family
 £100-£150



233. **Phyllis Parker (1910-1991) British**
 "The Thames with Tower Bridge"
 Oil on canvas
 Inscribed verso and on a label verso
 13" x 17" (33 x 43.2cm)
 Provenance: From the artist's family
 £150-£200

Patricia O'Brien



234. Patricia O'Brien (1927-) Irish
"La Toilette"
Oil on canvas
Signed and dated '96, and inscribed verso
21.5" x 13" (54.6 x 33cm)
Provenance: From the artist's estate
£200-£300



235. Patricia O'Brien (1927-) Irish
"The Fruit Tray"
Oil on canvas
Signed and dated '94, and inscribed
verso and on a label verso
12" x 14" (30.5 x 35.5cm)
Exhibited: Lucy B Campbell
Fine Art, London 1994.
Provenance: From the artist's estate
£200-£300



236. Patricia O'Brien (1927-) Irish
"The Pink Tulips"
Oil on canvas
Signed and dated '96, and inscribed
verso and on a label verso
12" x 14" (30.5 x 35.5cm)
Exhibited: Solomon Gallery,
Dublin, 1996
Provenance: From the artist's estate
£200-£300



237. Patricia O'Brien (1927-) Irish
"Ludwig"
Oil on canvas
Signed and dated '78
20" x 30" (50.8 x 76.2cm)
Provenance: From the artist's family
£400-£600

Kenneth Raymond Denton



238. Kenneth Raymond Denton (1932-2024) British
 "In Whitcliff Woods"
 Oil on board
 Signed, and signed and inscribed verso
 16" x 24" (40.6 x 61cm)
 £150-£200



239. Kenneth Raymond Denton (1932-2024) British
 "The Copse in Winter"
 Oil on board
 Signed, and signed and inscribed verso
 16" x 24" (40.6 x 61cm)
 £200-£300



240. Kenneth Raymond Denton (1932-2024) British
 "Spring Morning in Kent"
 Oil on board
 Signed and inscribed verso
 11.5" x 19.75" (29.2 x 50.1cm)
 £100-£200



241. Kenneth Raymond Denton (1932-2024) British
 "Brewing Storm Nnr Harwich"
 Oil on board
 Signed, and signed and inscribed verso
 14" x 22" (35.5 x 55.8cm)
 £200-£300



242. Kenneth Raymond Denton (1932-2024) British
 "Suffolk Cottages"
 Oil on board
 Signed, and signed and inscribed verso
 12" x 20" (30.5 x 50.8cm)
 £200-£300

243. Kenneth Raymond Denton (1932-2024) British
 "Sliema Creek, Malta"
 Oil on board
 Signed, and signed and inscribed verso
 16" x 24" (40.6 x 61cm)
 £300-£400



244. Kenneth Raymond Denton (1932-2024) British
 "Winter Sunlight, Tenby"
 Oil on board
 Signed, and signed and inscribed verso
 14" x 20" (35.5 x 50.8cm)
 £300-£400



245. Kenneth Raymond Denton (1932-2024) British
 "Brewing Storm, Devon"
 Oil on board
 Signed, and signed and inscribed verso
 16" x 24" (40.6 x 61cm)
 £200-£300





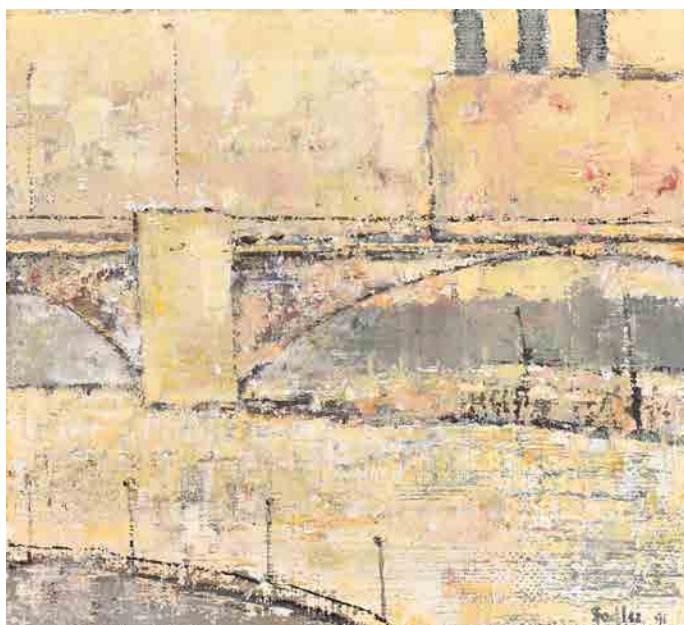
246. **Rod Pearce (1942-) British**
"Coming into Land"
 Watercolour
 Signed, and inscribed verso
 Unframed 7.5" x 11" (19.1 x 27.9cm)
£80-£120



247. **Rod Pearce (1942-) British**
Ladies on Horseback on a Beach
 Oil on artist's board
 Signed
 8" x 10" (20.3 x 25.4cm)
£100-£150



248. **Rod Pearce (1942-) British**
"Friends on the Beach"
 Oil on canvas
 Signed, and inscribed on a label verso
 14" x 22" (35.5 x 55.8cm)
 Provenance: Judi Emanuel Gallery, Cornwall
£100-£150



249. **Robert Sadler (1909-2001) British**
"Bridge at Argenteuil"
 Oil on board
 Signed and dated 96, and inscribed on a label verso
 12.5" x 13.75" (31.8 x 34.9cm)
£300-£400

250. **Vincent Southward (1911-1981) British**
 "Etna From Taormina"
 Oil on canvas
 Signed and dated '64, and inscribed verso
 20" x 24" (50.8 x 61cm)
 £150-£200



251. **Vincent Southward (1911-1981) British**
 "Souvenir of Corsica"
 Oil on canvas
 Signed and dated '65, and inscribed verso
 20" x 24" (50.8 x 61cm)
 £150-£200



252. **Attributed to Hans Ollgaard (1911-1969) Swedish**
 The Bullfight
 Oil on canvas
 36.5" x 41.5" (92.7 x 105.3cm)
 £200-£300





253. After Serge Poliakoff (1900-1969) Russian/French
 Untitled
 Oil on board
 Bears a signature
 16.5" x 32" (41.9 x 81.3cm)
 £100-£200



254. After Serge Poliakoff (1900-1969) Russian/French
 Untitled
 Oil on canvas
 Bears a signature
 20" x 30" (50.8 x 76.2cm)
 £100-£200



255. Jurek Jablonski (1943-) Polish
 "Shervingtons, High Holborn"
 Oil on board
 Signed and dated '95
 7" x 10" (17.7 x 25.4cm)
 £100-£150



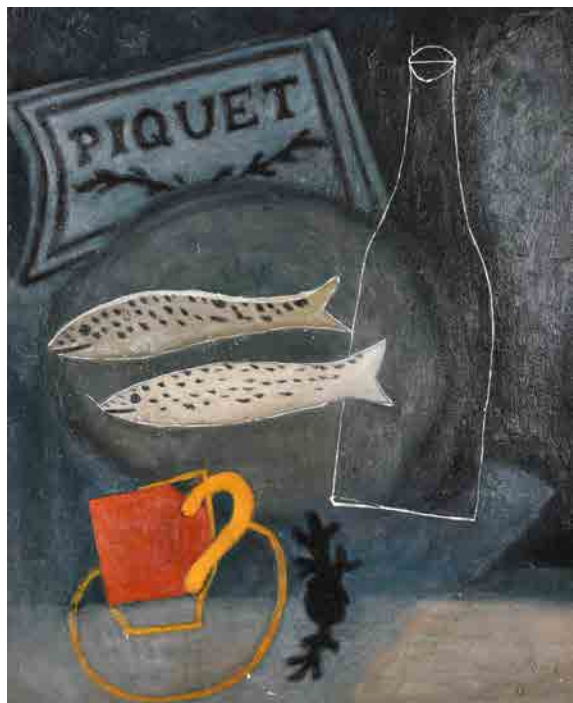
256. David Smith (1920-1999) British
 "Dubrovnik"
 Oil on panel
 Inscribed on a label verso
 24" x 35" (61 x 88.9cm)
 £100-£200



257. Hans Smatlak Barma (1903-1978) Austrian
 "Alpine Scene"
 Oil on canvas
 Signed, and inscribed verso
 16" x 20" (40.6 x 50.8cm)
 £100-£200



258. Michael Chapman (1933-) British
 "Fishing Boats and other Craft off Wells, N. Norfolk"
 Oil on board
 Signed, and signed and inscribed verso
 10" x 12" (25.4 x 30.5cm)
 £100-£150



259. After Ben Nicholson (1894-1982) British
 "Piquet"
 Oil on canvas laid down
 23.5" x 19.5" (50.7 x 49.5cm)
 £100-£200



260. After Ben Nicholson (1894-1982) British
 "Still Life on a Table"
 Oil on canvas laid down
 18.25" x 24" (46.3 x 61cm)
 £100-£200



261. John Jobson (1941-) British
 "Near Aix"
 Oil on panel
 Signed with initials, and inscribed on
 a label verso
 9" x 12" (22.8 x 30.5cm)
 Provenance: Fosse Gallery, John Lindsey
 Fine Art Limited, Gloucestershire
 £600-£800



262. Michael Smith
(1961-) British
"Cornish Landscape"
Oil on panel
Signed, and inscribed verso
11.25" x 9.75" (28.6 x 24.8cm)
£100-£200



263. Franco Barasciutti
(1941-) Italian
"Gladioli"
Oil on canvas
Signed and dated 1962,
and inscribed verso and
on a label verso
32.5" x 24" (82.6 x 61cm)
£200-£300



264. Frank Sydney Spears
(1906-1991) British/South African
Flowers in a Vase
Oil on canvas
Signed
30" x 24" (76.2 x 61cm)
£100-£200



265. Jack E Millar (1921-2006) British
"Sestri Levante, Italy"
Oil on board
Signed with initials, and inscribed verso
8" x 10" (20.3 x 25.4cm)
£200-£300



266. Jack E Millar (1921-2006) British
"Pennine Way, Norton in Ribblesdale"
Oil on board
Signed, and inscribed verso
22" x 30" (55.8 x 76.2cm)
Provenance: Duncan Campbell Fine Art, London
£300-£400



267. M Kazehko
(20th Century) Russian
A Town River Scene
Oil on board
Signed verso
18" x 13" (45.7 x 33cm)
£200-£300

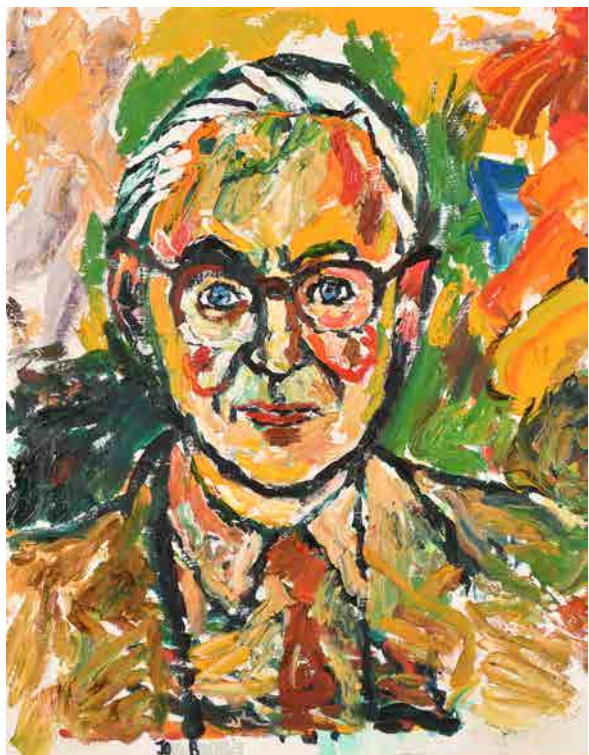


269. Albert Williams (1922-2010) British
A Profusion of Flowers in a China Vase
Oil on canvas
Signed
30" x 24" (76.2 x 61cm)
£1000-£1500



268. James Meikle Guy (1909-1983) American
Woman in a Surrealist Landscape
Oil on canvas
Signed with initials, and numbered 109+D=
14" x 7" (35.5 x 17.7cm)
£300-£500

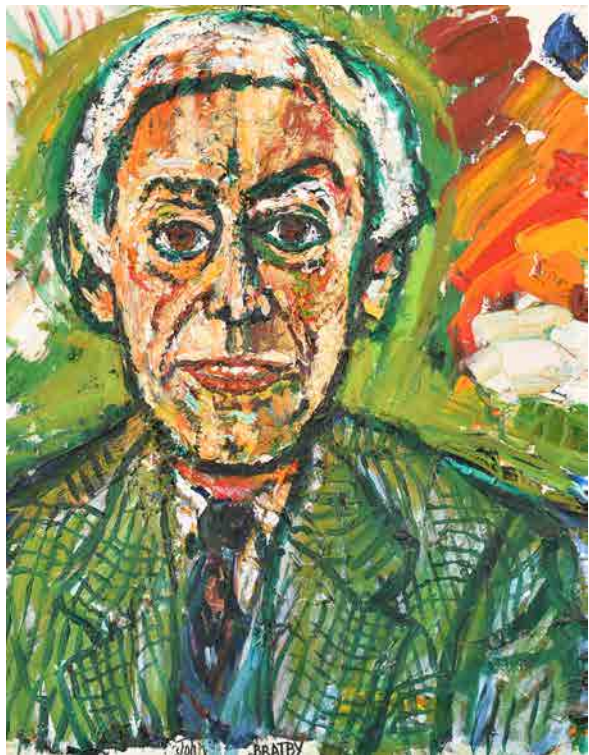
John Bratby



270. John Bratby (1928-1992) British
Portrait of Nicholas Parsons
Oil on canvas
Signed
17.75" x 14" (45.1 x 35.5cm)
£300-£400



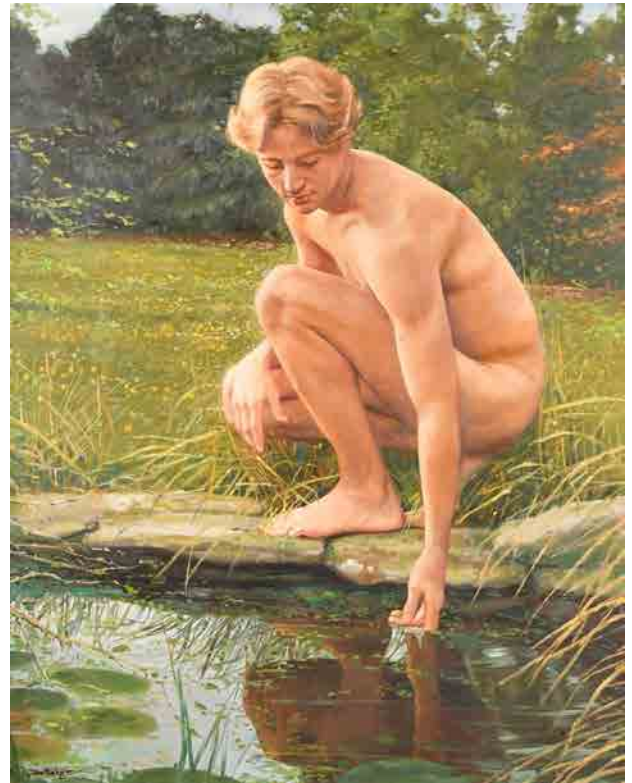
271. John Bratby (1928-1992) British
Portrait of Lord Thorneycroft
Oil on canvas
Signed
20" x 15.75" (50.8 x 40cm)
£300-£400



272. John Bratby (1928-1992) British
Portrait of Lord Carman (Master of the Rolls)
Oil on canvas
Signed
20" x 15.75" (50.8 x 40cm)
£300-£400



273. **Circle of Sean Keating (1889-1977) Irish**
 "Man from Aran"
 Oil on canvas
 Bears a signature 'AE Russell' on the stretcher
 In a papier-mache frame
 20" x 16" (50.8 x 40.6cm)
 £400-£600



274. **John Blakey (1952-) British**
 "A Summer Day"
 Oil on canvas
 Signed and dated '95, and inscribed on a label verso
 36" x 28" (91.5 x 71.1cm)
 £200-£400

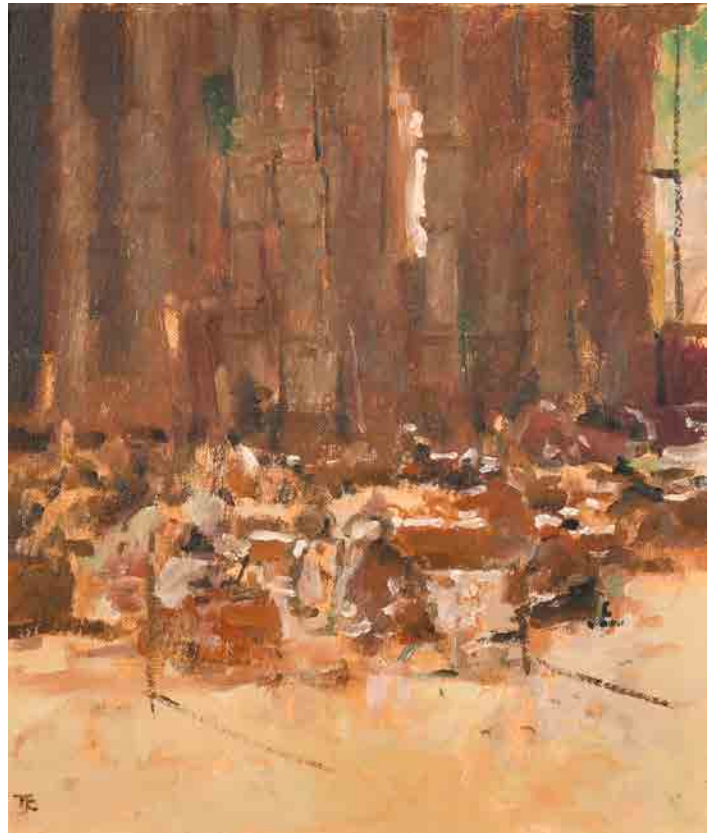


275. **Mary Millar Watt (1924-2023) British**
 Still Life of Tulips in a Chinese Vase
 Oil on canvas
 Signed in pencil
 20" x 16" (50.8 x 40.6cm)
 Provenance: From the artist's estate
 £200-£300

Tom Coates



276. **Tom Coates (1941-2023) British**
Study of a Soldier
Oil on board
With incised monogram, and incised signature and dated 1965 verso
8.5" x 6" (21.6 x 15.2cm)
£200-£400



277. **Tom Coates (1941-2023) British**
"Indian Stone Masons"
Oil on artist's board
Signed with initials, and inscribed on a label verso
12" x 10" (30.5 x 25.4cm)
Provenance: Hallam Fine Art, London
£300-£400



278. Arthur K Maderson (1942-) Irish
Self-Portrait
Oil on canvas laid down
Signed, and inscribed verso
22.5" x 21" (57.2 x 53.3cm)
£800-£1200



279. Bertram Nicholls (1883-1974) British
 "Bruges - Evening"
 Oil on canvas
 Signed and dated 1934, and inscribed on a label verso
 Unframed 21" x 25.5" (53.3 x 64.7cm)
 Provenance: The Fine Art Society Ltd, London
 £100-£200



280. Lucien Boulter (1882-1963) French
 The Breakfast
 Oil on board
 Signed
 10.75" x 14" (27.3 x 35.5cm)
 £400-£600

Frames

281. Early 19th Century French School
A Gilt Composition Frame, rebate 70.5" x 49.5"
(179.1 x 125.7cm)
£100-£200



282. 18th Century French School
A Fine Carved Giltwood Frame, with swept corners, rebate 69" x 53"
(175.2 x 134.6cm)
£200-£400



283. 18th Century Italian School
A Fine Gilt Composition Frame, rebate 68" x 49.25" (172.7 x 125.1cm)
£400-£600



284. 19th Century English School
A Carved Wood Frame, rebate 62" x 43" (157.5 x 109.2cm)
£80-£120



285. Early 19th Century Italian School
A Gilt and Painted Composition Frame, rebate 61.5" x 48" (156.2 x 122cm)
£200-£300



286. 20th Century English School
A Painted Frame, with gilt inner and outer edges, rebate 60" x 44.5"
(152.4 x 113cm)
£80-£120



287. 19th Century English School
An Inlaid Wooden Frame, rebate 59.5" x 31.25" (151.1 x 79.3cm)
£300-£400



289. 19th Century European School
A Carved Wood Frame, rebate 56" x 33" (142.2 x 83.8cm)
£300-£400



288. 19th Century English School
A Gilt Composition Frame, rebate 56" x 44" (142.2 x 111.7cm)
£30-£50



290. 19th Century English School
A Leaf Design Gilt Composition Frame, rebate 54.25" x 41" (137.8 x 104.2cm)
£200-£300



291. 19th Century English School
A Painted Composition Frame, with swept centres and corners,
rebate 52.5" x 35.5" (133.3 x 90.1cm)
£80-£120



292. 20th Century American School
A Gilt Composition Frame, rebate 52.25" x 36.75" (132.7 x 93.3cm)
£30-£50



293. 19th Century English School
A Painted Composition Frame, rebate 51.5" x 31.5" (130.8 x 80cm)
£100-£150



294. 20th Century English School
A Green Painted Carved Wood Frame, with swept centres and corners,
rebate 51" x 40.75" (129.6 x 103.5cm)
£50-£80

295. 19th Century English School
A Gilt Composition Frame, with swept and pierced
centres and corners, rebate 50.5" x 40.5" (128.3 x 102.8cm)
£200-£300



296. 19th Century English School
A Painted Composition Frame, with swept corners,
rebate 50.5" x 30.25" (128.3 x 76.8cm)
£50-£80



297. 18th Century English School
A Pair of Painted Carved Wood Frames, rebate 50" x 40.5" (127 x 102.8cm) (2)
£600-£800



299. Late 18th Century English School
A Darkwood Frame, with carved giltwood inner and outer edges,
rebate 50" x 40" (127 x 101.6cm)
£200-£300



298. 18th Century English School
A Pair of Darkwood Frames, with carved giltwood slip (one painted),
rebate 50" x 40" (127 x 101.6cm) (2)
£200-£300



300. Early 19th Century English School
A Carved Giltwood Frame, rebate 50" x 40" (127 x 101.6cm)
£200-£300



301. 19th Century English School
A Gilt Composition Frame, with swept and pierced centres and corners, rebate 50" x 40" (127 x 101.6cm)
£200-£400



302. 19th Century English School
A Carved Giltwood Frame, with swept and pierced centres and corners, rebate 50" x 40" (127 x 101.6cm)
£400-£600



303. 20th-21st Century English School
A Gilt Composition Frame, rebate 50" x 40" (127 x 101.6cm)
£100-£200



304. 19th Century English School
A Gilt Composition Frame, rebate 50" x 25" (127 x 63.5cm)
£40-£60



305. 19th Century English School
A Gilt Composition Frame, with swept corners, rebate 48.75" x 39"
(123.8 x 99.1cm)
£40-£60



306. 18th Century Italian School
A Painted Carved Wood Frame, rebate 47.5" x 38" (120.7 x 96.5cm)
£100-£200



307. 18th Century English School
A Painted Carved Wood Frame, rebate 45.75" x 36.25" (116.2 x 92.1cm)
£80-£120



308. Early 20th Century Italian School
A Black and Gilt Composition Frame, with swept centres and corners,
rebate 45.5" x 40" (115.6 x 101.6cm)
£200-£300



309. Early 19th Century English School
A Stripped Carved Wood Frame, rebate 42.25" x 34.25" (107.3 x 87cm)
£100-£200



310. 19th Century Italian School
A Carved Giltwood Frame, with panel decoration
and carved cherub corners, rebate 42" x 30"
(106.7 x 76.2cm)
£500-£700



312. Early 19th Century English School
A Gilt Composition Frame, rebate 40.5" x 31.5" (102.8 x 80cm)
£200-£300



311. 19th Century European School
A Black and Painted Composition Frame, rebate 41.5" x 33.75"
(105.4 x 85.7cm)
£100-£200



313. 19th Century English School
A Gilded Slip, rebate 40" x 30" (101.6 x 76.2cm)
£100-£200



314. 20th Century French School
A Painted Carved Wood Frame, rebate 40" x 29" (101.6 x 73.7cm)
£80-£120



315. Late 18th Century English School
A Carved Giltwood Frame, rebate 39.5" x 30.5" (100.3 x 77.5cm)
£200-£400



316. 20th Century Italian School
A Vatican Carved Giltwood Frame, rebate 39.5" x 28" (100.3 x 71.1cm)
£300-£500



317. Early 19th Century English School
A Ribbed Gilt Composition Frame, rebate 39.5" x 18" (100.3 x 45.7cm)
£200-£300



318. 18th Century Italian School
A Carved Giltwood Frame, rebate 39.25" x 29.25" (99.7 x 74.3cm)
£100-£200



319. 19th Century European School
A Painted Composition Frame, with swept corners, rebate 37" x 29.5"
94 x 74.8cm)
£50-£80



320. 19th Century English School
A Gilt Composition Frame, with swept and pierced centres and corners,
Arched, rebate 36.75" x 28.75" (93.3 x 73cm)
£80-£120



321. 20th Century English School
A Gilt Composition Frame, rebate 36" x 32" (91.5 x 81.3cm)
£30-£50



322. 19th Century English School
A Gilt Composition Frame, rebate 36" x 28" (91.5 x 71.1cm)
£150-£250



323. 20th Century English School
A Gilt Composition Frame, rebate 36" x 28" (91.5 x 71.1cm)
£200-£300



324. 19th Century European School
A Gilt and Painted Composition Frame, with swept corners,
rebate 36" x 24" (91.5 x 61cm)
£80-£120



325. Early 19th Century European School
A Carved Giltwood Frame, rebate 34.5" x 27" (87.6 x 68.6cm)
£80-£120



327. 19th Century English School

A Black Painted Hollow Frame, with gilt inner edge, rebate 33.5" x 28.75"
(85.1 x 73cm)

£50-£80



326. 19th Century French School

A Louis Style Carved Giltwood Frame, with swept centres and corners,
rebate 34.5" x 25" (87.6 x 63.5cm)

£200-£300



328. 18th Century French School

A Louis XIV Carved Giltwood Frame with swept centres and corners,
rebate 33" x 25" (83.8 x 63.5cm)

£200-£400



329. 20th Century English School
A Gilt Composition Frame, rebate 32.5" x 26.5" (82.5 x 67.3cm)
£30-£50



330. Early 19th Century Italian School
A Gilt Composition Frame, rebate 32.5" x 25" (82.6 x 63.5cm)
£100-£200



331. 19th Century English School
A Gilt Composition Frame, rebate 32.5" x 15.5" (82.6 x 39.3cm)
£80-£120



332. 20th Century French School
A Painted Carved Wood Frame, rebate 31.75" x 25.5" (80.7 x 64.7cm)
£70-£100



333. 19th Century English School
A Carved Giltwood Frame, rebate 31.75" x 24.75" (80.7 x 62.8cm)
£100-£200



334. 20th Century French School
A Gilt Composition Frame, with swept centres and corners,
rebate 31.75" x 23.5" (80.7 x 59.7cm)
£40-£60



335. 20th Century French School
A Painted Carved Wood Frame, rebate 31.5" x 21.5" (80 x 54.6cm)
£80-£120



336. 20th Century European School
A Black and Gilt Composition Frame, rebate 31" x 25" (78.8 x 63.5cm)
£80-£120



337. 20th Century English School
A Gilt Composition Frame, with swept and pierced centres and corners, rebate 31" x 23.25" (78.8 x 59.1cm)
£100-£200



338. 20th Century European School
A Black and Gilt Painted Frame, with a gilt slip, rebate 30.5" x 23.5" (77.4 x 59.7cm)
£80-£120



339. Early 19th Century English School
A Gilt Composition Frame, rebate 30" x 25.25" (76.2 x 64.2cm)
£100-£200



340. 19th Century English School
A Painted Composition Frame, with swept corners, rebate 30" x 25.25" (76.2 x 64.1cm)
£40-£60



342. 19th Century European School
A Painted Composition Frame, rebate 30" x 25" (76.2 x 63.5cm)
£80-£120



341. Late 18th Century Italian School
A Carved Giltwood Frame, rebate 30" x 25" (76.2 x 63.5cm)
£200-£300



343. 19th Century English School
A Gilt Composition Frame, with swept centres and corners, rebate 30" x 25"
(76.2 x 63.5cm)
£100-£200



344. 20th-21st Century English School
A Black Painted Frame, with gold inner and outer edges,
rebate 30" x 25" (76.2 x 63.5cm)
£300-£400



345. 20th-21st Century English School
A Black Painted Frame, with silver inner and outer edges,
rebate 30" x 25" (76.2 x 63.5cm)
£300-£400



346. 19th Century English School
A Gilt Composition Frame, rebate 30" x 24.75" (76.2 x 62.8cm)
£50-£80



347. 19th Century English School
A Black Painted Frame, with a gilt inner edge, rebate 30" x 24.75" (76.2 x 62.8cm)
£80-£120



348. 20th Century Italian School
A Black and Gilt Painted Frame, rebate 30" x 23" (76.2 x 58.4cm)
£100-£200



349. 20th Century English School
A Painted Frame, rebate 30" x 20" (76.2 x 50.8cm)
£40-£60



350. 19th Century French School
A Gilt Composition Frame with swept centres and corners, rebate 29.5" x 19"
(75 x 48.2cm)
£50-£80

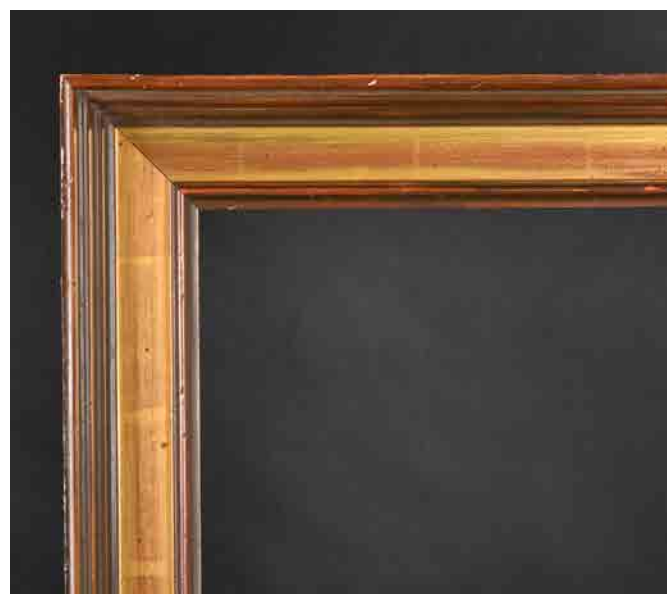


351. 20th Century Italian School
A Gilt and Black Painted Frame, rebate 29" x 20" (73.7 x 50.8cm)
£300-£400



352. 19th Century French School
A Barbizon Gilt Composition Frame,
rebate 28.75" x 23.75" (73 x 60.4cm)
£80-£120

353. 20th-21st Century English School
A Pair of Black Painted Frames,
with a silver inner edge, rebate 28.75" x 23.75"
(73 x 60.3cm) (2)
£300-£400



354. 20th Century European School
A Gilt and Painted Composition Frame, rebate 28.5" x 22" (72.4 x 55.8cm)
£40-£60



355. 20th Century European School
A Black and Gilt Painted Frame, rebate 28.25" x 22" (71.8 x 55.9cm)
£80-£120



356. 19th Century European School
A Gilt Composition Frame, rebate 28" x 25" (71.1 x 63.5cm)
£60-£80



357. 18th Century Italian School
A Black Painted Frame, with gilt inner and outer edges,
rebate 27.25" x 23.5" (69.2 x 59.7cm)
£100-£200



358. Early 19th Century English School
A Painted Composition Frame, with swept
centres and corners and inset glass, rebate
27.25" x 21" (69.2 x 53.3cm)
£40-£60

359. 20th-21st Century English School
A Black Painted Frame, with gold top edges,
rebate 26.5" x 22.5" (67.3 x 57.1cm)
£200-£300



360. 20th Century English School
A Carved Giltwood Frame, rebate 26.5" x 22.25"
(67.3 x 56.5cm)
£500-£700



361. 19th Century English School
A Gilt and Painted Composition Frame, rebate 26.5" x 18.5"
(67.3 x 47cm)
£40-£60



362. 20th Century English School
A Gilt Composition Frame with a white slip, rebate 26.5" x 16.5"
(67.3 x 41.9cm)
£30-£50



363. 19th Century English School
A Hollow Ribbed Composition Frame, rebate 26" x 22.5"
(66.1 x 57.1cm)
£40-£60



364. 20th Century English School
A Gilt Composition Frame, with swept and pierced centres and corners, rebate 25.5" x 21.75" (64.8 x 55.3cm)
£60-£80



365. 20th Century French School
A Louis Style Gilt Composition Frame, with swept centres and corners and a fabric slip, rebate 25.5" x 21.5" (64.8 x 54.6cm), without slip rebate 27.25" x 23" (69.2 x 58.4cm)
£80-£120



366. 19th Century Italian School
A Painted Carved Wood Frame, rebate 25" x 17" (63.5 x 43.2cm)
£40-£60



367. 20th-21st Century English School
A Pair of Black Painted Frames, with gilt top edges,
rebate 24.75" x 21" (62.8 x 53.3cm) (2)
£500-£700



368. 19th Century French School
A Gilt Composition Frame, with swept corners, rebate 24.5" x 20.25"
(62.2 x 51.4cm)
£150-£250



369. 20th-21st Century English School
A Silver Composition Frame, rebate 24.5" x 18.5" (62.2 x 47cm)
£100-£200



370. 17th Century French School
A Carved Giltwood Louis XIV Frame,
rebate 24.5" x 17.5" (62.2 x 44.4cm)
£400-£600



372. 19th Century English School
A Gilt Composition Frame, rebate 24" x 20" (61 x 50.8cm)
£100-£200



371. 18th Century European School
A Carved Giltwood Frame, rebate 24.25" x 18.5" (61.6 x 47cm)
£100-£200



373. 19th Century Spanish School
A Fine Carved Giltwood Frame, rebate 24" x 20" (61 x 50.8cm)
£300-£500



374. 20th-21st Century European School
A Gilt Composition Frame, rebate 24" x 18.5" (61 x 47cm)
£30-£50



375. 19th Century English School
A Hollow Ribbed Wooden Frame, rebate 24" x 18" (61 x 45.7cm)
£300-£400



376. 19th Century English School
A Gilt Composition Frame, with swept
corners, rebate 24" x 18" (61 x 45.7cm)
£50-£80



377. 20th Century European School
A Black Painted Frame, with a gilded plate, rebate 24" x 18" (61 x 45.7cm)
£60-£80



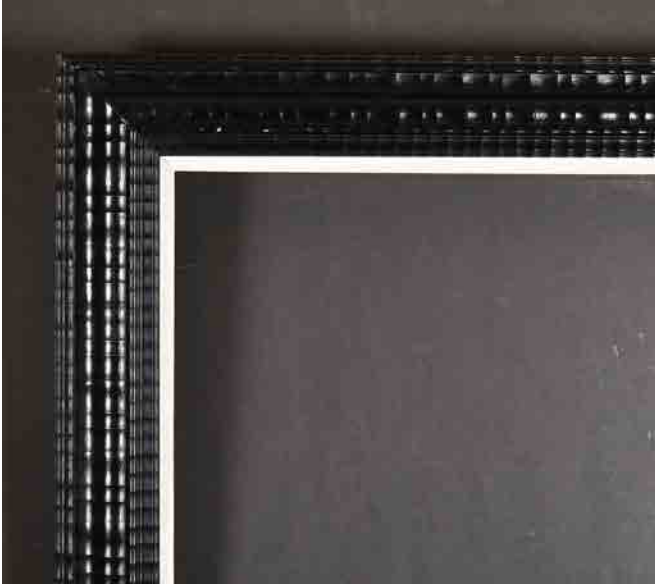
378. 19th Century English School
A Gilt Composition Frame, rebate 24" x 16" (61 x 40.6cm)
£100-£200



379. 19th Century English School
A Gilt and Painted Composition Frame, with swept and pierced centres and corners, rebate 24" x 16" (61 x 40.6cm)
£80-£120



380. 20th Century English School
A Wooden Frame, rebate 24" x 16" (61 x 40.6cm)
£30-£50



381. 20th Century English School
A Black Rippled Frame, with a white slip, rebate 23.75" x 19.75"
(60.3 x 50.2cm)
£200-£300



382. Early 19th Century English School
A Hollow Gilt Composition Frame, rebate 23.25" x 21" (59.1 x 53.3cm)
£100-£200



383. 20th Century English School
A Gilt Composition Frame, rebate 23" x 20.75" (58.4 x 52.7cm)
£60-£80



384. 19th Century English School
A Boxed Gilt Composition Frame, rebate 23" x 18" (58.4 x 45.7cm)
£50-£80



385. 18th Century French School
A Louis XIV Carved Giltwood Frame, with swept centres and corners, rebate 23" x 15.75" (58.4 x 40cm)
£100-£200



386. 20th Century English School
A Gilt Composition Frame, with swept and pierced centres and corners, rebate 22.75" x 19" (57.8 x 48.2cm)
£50-£80



387. 19th Century English School
A Fine Bird's Eye Maple Frame, with a gilt slip, rebate 22.5" x 18.75" (57.1 x 47.6cm)
£150-£250



388. Early 20th Century European School
A Painted Composition Frame, rebate 22.5" x 18.25" (57.2 x 46.3cm)
£40-£60



389. 20th Century French School
A Painted Carved Wood Frame, with a fabric slip, rebate 22.25" x 17" (56.5 x 43.2cm)
£80-£120



390. 19th Century English School
A Painted Composition Frame, rebate 22" x 18" (55.8 x 45.7cm)
£60-£80



391. 20th Century English School
A Wooden Frame, rebate 22" x 17.75" (55.8 x 45cm)
£30-£50



392. 20th Century English School
A Gilt Composition Frame, rebate 22" x 17.5" (55.8 x 44.4cm)
£30-£50



393. 20th Century English School
A Gilt and Painted Frame, rebate 22" x 15" (55.8 x 38.1cm)
£50-£80



394. 20th Century French School
A Painted Carved Wood Frame, rebate 21.75" x 18.25" (55.2 x 46.3cm)
£100-£200



395. 20th Century English School
An Art Nouveau Frame, rebate 21.75" x 12.75" (55.3 x 32.4cm)
£30-£50



396. 19th Century English School
A Gilt Composition Frame, rebate 21.5" x 17.75" (54.6 x 45.1cm)
£60-£80



397. 18th Century English School
A Carved Giltwood Frame, rebate 21.5" x 12.5" (54.6 x 31.1cm)
£100-£200



398. 19th Century Italian School
A Carved Giltwood Frame, rebate 21" x 17" (53.4 x 43.2cm)
£100-£200



399. 20th Century English School
A Gilt and Painted Frame, rebate 21" x 17" (53.3 x 43.2cm)
£60-£80



400. 20th Century English School
A Gilt Composition Frame, rebate 21" x 16" (53.3 x 40.6cm)
£30-£50



401. 19th Century English School
A Gilt Composition Frame, with a gilt slip and inset glass, rebate 21" x 14.5" (53.3 x 36.8cm) without slip, rebate 25" x 18.5" (63.5 x 47cm)
£60-£80



402. 19th Century English School
A Gilt and Painted Carved Wood Frame, rebate 20.5" x 14.5" (52.1 x 36.8cm)
£80-£120



403. 20th Century English School
A Painted Frame, rebate 20.25" x 16" (51.4 x 40.6cm)
£30-£50



404. 18th Century English School
A Fine Pair of Darkwood Frames, with gilt slips, rebate 20.25" x 14.5" (51.4 x 38.1cm) (2)
£200-£300



405. 20th Century English School
A Gilt Composition Frame, rebate 20" x 16.5" (50.8 x 41.9cm)
£60-£80



406. Early 19th Century English School
A Carved Giltwood Frame, rebate 20" x 16.25" (50.8 x 41.3cm)
£100-£200



407. 20th Century English School
A Pair of Inlaid Frames, with gilt slips, rebate 20" x 16"
(50.8 x 40.6cm) (2)
£40-£60



408. 19th Century European School
An Oval Gilt Composition Frame, rebate 20" x 15.75"
(50.8 x 40cm)
£30-£50



409. 20th Century Italian School
A Gilt Composition Frame, rebate 20" x 14.5" (50.8 x 36.8cm)
£50-£80



410. 19th Century French School
A Carved Giltwood Frame, rebate 19.5" x 14" (49.5 x 35.5cm)
£80-£120



411. 19th Century English School
A Pair of Maple Frames, with painted slips, rebate 19.5" x 14"
(49.5 x 35.5cm) (2)
£40-£60



412. 19th Century European School
A Painted Composition Frame, rebate 19.5" x 13" (49.5 x 33cm)
£40-£60



413. Early 20th Century English School
A Painted Composition Frame, rebate 19" x 17" (48.2 x 43.2cm)
£30-£50



414. 19th Century English School
A Gilt Composition Frame, rebate 18.75" x 10.75" (47.7 x 27.3cm)
£100-£150



415. 19th Century European School
A Gilt Composition Frame, rebate 18.5" x 15.25" (47 x 38.7cm)
£30-£50



416. 20th-21st Century English School
A Silver Composition Frame, rebate 18.25" x 14.25" (46.4 x 36.2cm)
£100-£200



417. Late 18th Century English School

A Pair of Darkwood Frames, with carved giltwood slips and inset glass, rebate 18.25" x 13.25" (46.3 x 33.6cm) (2)
£100-£200



418. 20th Century Dutch School

A Wooden Frame, with gilt inner and outer edging, rebate 18" x 14" (45.7 x 35.5cm)
£40-£60



419. Early 19th Century English School

A Pair of Gilt Composition Hollow Frames, rebate 18" x 13.25" (45.7 x 33.7cm) (2)
£80-£120



420. 19th Century English School

A Painted Composition Frame, rebate 18" x 10" (45.7 x 25.4cm) and another similar, rebate 16" x 12" (40.6 x 30.5cm) (2)
£40-£60



421. 19th Century English School

A Gilt Composition Frame, with inset print and glass, rebate 17.75" x 13.5" (45.1 x 34.3cm)
£30-£50



422. 20th Century European School

A Darkwood Frame, with a gilt slip, rebate 17.5" x 14.75" (44.4 x 37.4cm), together with a painted frame, rebate 19.25" x 15.5" (48.9 x 39.4cm) (2)
£30-£50



423. 19th Century European School
A Gilt Composition Frame, rebate 17.25" x 10.5" (43.8 x 26.7cm)
£50-£80



424. Early 20th Century English School
A Wooden Ribbed Frame, with a gilt slip, rebate 17" x 17" (43.2 x 43.2cm)
£60-£80



425. 19th Century English School
A Pair of Black Painted Ribbed Frames, rebate 17" x 13.25"
(43.2 x 33.7cm) (2)
£100-£150



426. 20th Century English School
A Maple Frame, with a gilt slip, rebate 17" x 12.25" (43.2 x 31.1cm)
£40-£60



427. 20th Century European School
A Black Painted Frame, with a gilt slip, rebate 16.5" x 13" (42 x 33cm)
£40-£60



428. 19th Century English School
A Painted Composition Frame, with swept corners, rebate 16.5" x 12.5"
(41.9 x 31.7cm)
£40-£60



429. 20th-21st Century English School
A Black and Painted Silver Frame, rebate 16.25" x 12.25" (41.3 x 31.1cm)
£100-£200



430. 19th Century Italian School
A Carved Giltwood Florentine Frame, with inset bevelled mirror glass, rebate 16" x 12.5" (40.6 x 31.7cm)
£200-£300



431. 20th Century English School
A Gilt Composition Frame, rebate 16" x 12" (40.6 x 30.5cm)
£30-£50



432. 20th Century French School
A Painted Frame, rebate 16" x 10.5" (40.6 x 26.7cm)
£40-£60



433. 19th Century Italian School
A Gilt Composition Ribbed Frame, rebate 15.5" x 12.5" (39.3 x 31.7cm)
£60-£80



434. 19th Century European School
A Gilt Composition Frame, rebate 15.5" x 12" (39.4 x 30.5cm)
£50-£80



435. 20th Century English School
A Painted Oval Carved Wood Frame, rebate 15.5" x 12" (39.3 x 30.5cm)
£30-£50



436. 20th Century English School
A Black Painted Frame, with gilt edging, rebate 15.25" x 14.25" (38.7 x 36.2cm)
£150-£200



437. 20th-21st Century English School
A Black Painted Cushioned Frame, with a gilt inner edge, rebate 15" x 12"
(38.2 x 30.5cm)
£150-£250



438. 20th Century English School
A Gilt Tabernacle Frame, rebate 14.5" x 9.25" (36.8 x 23.5cm)
£100-£200



439. 19th Century European School
A Gilt Composition Frame, rebate 14.25" x 11.25" (36.1 x 28.5cm)
£50-£80



440. Early 19th Century English School
A Pair of Painted Hollow Frames, rebate 14" x 12" (35.5 x 30.5cm) (2)
£60-£80



441. 19th Century English School
A Painted Composition Frame, rebate 14" x 11.75" (35.5 x 29.8cm)
£30-£50



442. 20th Century French School
A Gilt Composition Frame, with a white slip, rebate 14" x 11" (35.5 x 27.9cm)
£60-£80



443. 19th Century English School
A Gilt Composition Frame, rebate 14" x 10" (35.5 x 25.4cm)
£40-£60



444. 19th Century French School
A Barbizon Gilt Composition Frame, rebate 13.5" x 8.75" (34.3 x 22.2cm)
£100-£200



445. 19th Century English School
A Gilt Composition Frame with swept corners, rebate 13.25" x 10.5"
(33.6 x 26.7cm)
£40-£60



446. 19th Century French School
A Painted Composition Frame, with swept and pierced centres and corners, rebate 13" x 9.5" (33 x 24.1cm)
£30-£50



447. 20th Century French School
A Pair of Painted Frames, with white inner edges, rebate 13" x 9.5"
(33 x 24.2cm) (2)
£80-£120



448. 20th-21st Century English School
A Black Painted Frame, with gilt top edges, rebate 12.25" x 10.25"
(31.1 x 26cm)
£100-£200



449. 20th-21st Century English School

A Black Painted Frame, with silver inner and outer edges,
rebate 12.25" x 9.25" (31.1 x 23.4cm)

£100-£200



450. 19th Century English School

A Gilt Composition Frame, with swept and pierced centres and
corners, rebate 12" x 10" (30.5 x 25.4cm), without slip,
rebate 14" x 12" (35.5 x 30.5cm)

£80-£120



451. 19th Century English School

A Pair of Gilt Composition Frames, rebate 12" x 10"
(30.5 x 25.4cm) (2)

£30-£50



452. 19th Century Italian School

A Carved Giltwood Florentine Frame, with inset mirror glass,
rebate 12" x 10" (30.5 x 25.4cm)

£60-£80



453. 20th Century European School

A Gilt and Wooden Frame, rebate 12" x 10" (30.5 x 25.4cm)

£40-£60



454. 20th Century English School

A Pair of Gilt Composition Frames with swept and pierced
centres and corners, rebate 12" x 10" (30.5 x 25.4cm) (2)

£30-£50



455. 19th Century English School
A Gilt Composition Frame, with swept and pierced corners,
rebate 12" x 9.75" (30.5 x 24.8cm)
£100-£200



456. 19th Century English School
A Set of Four Gilt Composition Frames, with swept centres and corners,
rebate 12" x 6" (30.5 x 15.2cm) (4)
£80-£120



457. 19th Century English School
A Painted Composition Frame, with swept centres and corners,
rebate 11.75" x 10" (29.8 x 25.4cm)
£50-£80



458. 19th Century English School
A Carved Giltwood Frame, with inset glass, rebate 11.75" x 9.75"
(29.8 x 24.8cm)
£30-£50



459. 19th Century English School
A Carved Giltwood Frame, with inset glass, rebate 11.5" x 9.75"
(29.2 x 24.8cm)
£30-£50



460. Early 19th Century English School
A Hollow Gilt Composition Frame, rebate 11.5" x 7.5" (29.2 x 19cm)
£100-£200



461. 20th-21st Century English School
A Black Painted Frame, with gilt inner and outer edges, rebate 11.25" x 8.25"
(28.5 x 20.9cm)
£100-£200



462. 21st Century European School
A Silver and Black Painted Composition Frame, rebate 11" x 8.5"
(27.9 x 21.5cm)
£40-£60



463. Early 19th Century English School

A Pair of Darkwood Frames, with gilt slips, rebate 11" x 8" (27.9 x 20.3cm) and another similar, rebate 11" x 9" (27.9 x 22.8cm) (3)
£60-£80



464. 19th Century English School

A Carved Giltwood Frame, with swept corners, rebate 10.5" x 8.5" (26.7 x 21.6cm)
£60-£80



465. 19th Century French School

A Fine Gilt Composition Barbizon Frame, with inset glass, rebate 10.5" x 8.5" (26.7 x 21.6cm), without slip 12.25" x 10.75" (31.1 x 27.3cm)
£200-£300



466. 19th Century English School
A Boxed Gilt Composition Frame, rebate 10.5" x 8.5" (26.7 x 21.6cm)
£50-£80



467. 19th Century English School
A Reversed Gilt Composition Frame, rebate 10" x 7" (25.4 x 17.8cm)
£30-£50



468. 19th Century English School
A Pair of Hogarth Style Frames, rebate 9.75" x 7.25" (24.7 x 18.4cm) (2)
£50-£80



469. 19th Century English School
A Gilt Composition Frame, rebate 9.5" x 7.5" (24.1 x 19cm)
£60-£80



470. Early 19th Century English School
A Carved Giltwood Frame, with swept corners,
rebate 9.25" x 7.25" (23.5 x 18.4cm)
£200-£300



471. 20th-21st Century English School
A Black Painted Frame, with silver inner and outer edges,
rebate 9" x 7" (22.8 x 17.8cm)
£100-£200



472. 19th Century English School
A Boxed Gilt Composition Frame, rebate 8.5" x 6.5" (21.5 x 16.5cm)
£30-£50



473. 19th Century English School
A Pair of Gilt Composition Frames, rebate 8.25" x 6.25"
(21 x 15.9cm) (2)
£30-£50



474. 20th-21st Century English School
A Black Painted Frame, with silver inner and outer edges,
rebate 8" x 7.5" (20.3 x 19cm)
£100-£200



475. 20th Century European School
A Pair of Wooden Frames, with black slips, rebate 6" x 4.75"
(15.2 x 12cm) (2)
£80-£120



476. 20th Century English School
A Pair of Brass Picture Stands, overall 12" (height) x 6" (width)
(30.5 x 15.3cm) (2)
£20-£40



477. 20th Century English School
A Set of Five Brass Picture Stands, overall 18" (height) x 9.25"
(width) (45.7 x 23.5cm) (5)
£50-£100



478. 20th Century English School

A Double sided fully adjustable easel with handle, 66" x 27" x 31.25"
(167.7 x 68.6 x 79.3cm)

£400-£600



479. 20th Century English School
A Single sided fully adjustable easel with handle,
65.5" x 28.75" x 27" (166.3 x 73 x 68.6cm)
£200-£400



480. 20th Century English School
A Single sided fully adjustable easel with handle,
64" x 26.5" x 28" (162.6 x 67.3 x 71.1cm)
£200-£400

Forthcoming Fine Paintings & Frames Sale

6th March 2025



To consign to our sales is just £10 (+VAT) per lot
Includes all commission, illustration and insurance. No other charges

Explanation of Catalogue Terms

The forename(s) (or asterisks where not known) and surname of the artist indicates, in our opinion, an original work by the artist named. The initials of the forename(s) and the surname of the artist indicates in our opinion a work of the period of the artist which may be wholly or in part his/her work.

'Attributed to...'	In our opinion probably a work by the artist, but with less certainty as to authorship in whole or part.
'Studio of ...'	In our opinion a work by an unknown artist in the studio of the artist, possibly under the artist's direction.
'Circle of ...'	In our opinion a work of the period, by an unknown artist with the artist's influence.
'Style of ...'	In our opinion a work at a later date, by an unknown artist following the artist's style.
'Follower of ...'	In our opinion a work at a much later date, by an unknown artist following the artist's style.
'Manner of ...'	In our opinion a work at an unknown date, by an unknown artist following the artist's style.
'After ...'	In our opinion a work at a later date, by an unknown artist copying a work of the artist.
'Signed, Dated & Inscribed'	In our opinion the signature, date and inscription are from the hand of the artist.
'Highlighted Signature'	In our opinion the signature is/are from the hand of the artist, in whole or part, that may have been restored.
'Bears a Signature'	In our opinion the signature is not by the artist and has been added by another hand/hands at a later date.
'Oil Painting'	In our opinion is painted in oils or acrylic.
'Mixed Media'	In our opinion a mixture or combination of part, some or all of the following - Oil, Watercolour, Gouache, Pencil, Ink or Print.

Consign to our 2025 sales

£10 (+VAT) per lot

Includes all commission, illustration and insurance

No other charges

AUCTION INFORMATION

BUYER'S FEES - All purchases are subject to a buyer's premium, which is charged per lot at 25% of the hammer price plus VAT at the current rate of 20% will be added to the buyer's premium of all lots.

CONDITION REPORTS - Condition reports can be requested by contacting us at info@parkerfineartauctions.com or calling us on 01252 20 30 20. Bidders must satisfy themselves as to the condition of each lot. A Condition Report is an honest expression of our opinion and not a statement of fact and is provided as a service to the Seller. Requests for condition reports must be submitted 24 hours before the start of the sale. The absence of a condition report in this catalogue does not imply there are no imperfections in the works.

REQUEST FOR IMAGES - More images can be found in the online catalogue. Requests for additional images of items in the sale can be made up to 24 hours before the start of the sale.

Please note the colours portrayed in the catalogue, and in additional images, are the best attempt at a likeness but cannot be confirmed as identical to the true colours.

Please note that, owing to the recent introduction of money laundering regulations clients wishing to bid in this auction will be asked to provide two forms of identification. This applies to new and existing clients.

ATTENDING THE AUCTION - If intending to buy you are required to register your name and details at our reception desk on the day of the auction. You will then be allocated a bidding number, which you use when bidding for an item.

ABSENTEE BIDS - You can place an absentee bid, and the auctioneer will bid on your behalf to obtain the lot as cheaply as possible as allowed by other bids and reserves. To make an absentee bid you can complete a bidding form at reception, telephone us, or send us your bid by email. You should give us the maximum hammer price you are prepared to pay, remembering to take into account the buyer's premium and any taxes and charges payable on top of the hammer price.

Absentee bids must be submitted by close of business on the day before the sale. If identical bids are submitted, the person who bid first will take precedence.

TELEPHONE BIDDING - You can take part in the sale by bidding over the telephone. Telephone lines must be booked by close of business on the day before the sale and are allocated on a first-come-first-served basis.

ONLINE BIDDING - Bidding can be done through EasyLive Auctions or the-saleroom.com. Bidding on these sites is directly through the relevant platforms and will incur extra commission charges. Please refer to the individual bidding websites for their individual terms and conditions.

PAYMENT - Payment will be accepted, if you are a successful bidder, by bank transfer direct into our bank account, by debit card issued in the name of the Buyer by a UK bank and registered to a UK billing address, by all major UK issued credit cards issued in the name of the Buyer and registered to a UK billing address (up to £1000), or in cash up to £8,000 (subject to relevant money laundering regulations). The name of the bank account holder should match the name of the buyer. Payment may also be made by sterling personal cheques drawn on a UK bank account and made payable to 'Parker Fine Art Auctions Ltd', however Lots paid for by this method cannot be collected until your cheque has cleared. Payment can be made and purchases collected during the auction. All accounts must be settled within 14 days of the sale. Accounts not paid within 14 days will automatically be subject to an interest charge (not exceeding 1.5% per month on the total amount due). Monies from wire transfers and cheques must be cleared into our account for 24 hours before items may be collected.

If the buyer has failed to collect within a period of two months (from sale date), Parker Fine Art Auctions reserve the right to re-enter the uncollected items through auction, to recover the cost of storage and associated costs. At this time the buyer relinquishes all claims to ownership and any right to financial compensation.

COLLECTION - Before being able to collect your purchases you are required to pay the hammer price, plus the applicable charges, and obtain a receipt acknowledging payment.

Once payment for lots has been received collection or transportation of purchased lots must be made within 14 days of the sale to avoid storage charges.

We are open for collections Monday – Friday between 9am and 5pm, or by arrangement.

STORAGE - Storage charges will be levied on all lots not collected within 14 days of the sale of £5 plus VAT per lot per day.

DELIVERY - If you are arranging your own professional collection and delivery, please ensure the lot has been paid for and the transport company has full details of the items to be collected, and we have received an authorisation note.

In some circumstances some very small items may be posted for a fee, but this will be at the Auctioneer's discretion and will be subject to your own Insurance and Liability. Please contact us if you would like details of local shipping companies.

For Full terms and conditions please go to our website
www.parkerfineartauctions.com

Conditions of Sale for Public Auctions

Parker Fine Art Auctions Ltd carries out business with Bidders, Buyers and Sellers on the following conditions and on such terms, conditions and notices as may be referred to herein. All Bidders, Buyers and others participating in a public auction accept that these terms apply to the exclusion of any terms and conditions contained in any of those person's own documents even if the same purport to provide that they or some other terms prevail. Any particular public auction and/or any particular lot in an auction may be subject to different or additional terms which will be published in our auction catalogue online.

The Buyer's attention is particularly drawn to clause 24 (consumers) and clause 23 (non-consumers), which set out the extent of the Auctioneer's and the Seller's liability to the Buyer.

Please read these Conditions together with our "Information for Buyers" document, which provides additional information and terms applicable to our auctions.

1. DEFINITIONS

In these Conditions:

- (a) "Auction Terms and Conditions" means these Conditions, the Terms of Consignment and any other terms applicable to auctions conducted by the Auctioneer and notified to Buyers, Bidders and/or Sellers (as applicable);
- (b) "Auctioneer", "we", "us" or "our" etc. means the firm of Parker Fine Art Auctions Ltd or its authorised auctioneer, as appropriate;
- (c) "Conditions" means these Conditions of Sale for Public Auctions (which include the terms set out in "Information for Buyers");
- (d) "deliberate forgery" means an imitation made with the intention of deceiving as to authorship, origin, date, age, period, culture or source but which is unequivocally described in the catalogue as being the work of a particular creator and which at the date of the sale had a value materially less than it would have had if it had been in accordance with the description;
- (e) "hammer price" means the level of bidding reached (at or above any reserve) when the auctioneer brings down the hammer;
- (f) "Information for Buyers" means the document named Information for Buyers at Public Auction containing additional terms and information for Buyers available on our website at www.parkerfineartauctions.com;
- (g) "Lots" any items or group of items offered for sale by us as agents for the Seller;
- (h) "Seller" means any person that appoints us as their agent to sell Lots on their behalf;
- (i) "Terms of Consignment" means the stipulated terms and rates of commission on which we accept instructions from Sellers or their agents including those terms set out in the document named "Terms of Consignment for Public Auctions" which can be found on our website or are available upon request;
- (j) "Total Amount Due" means the hammer price in respect of the Lot sold together with any premium, Value Added Tax chargeable and any additional charges payable by a defaulting buyer under these Conditions;
- (k) "Sale Proceeds" means the net amount due to the Seller, being the hammer price of the lot sold less commission at the stated rate, Value Added Tax chargeable and any other amounts due to us by the seller in whatever capacity and however arising; "you", "your", etc. refer to the buyer as identified in Clause 3.4;
- (l) The singular includes the plural and vice versa as appropriate; and
- (m) A person includes a natural person, corporate or unincorporated body (whether or not having separate legal personality).

2. FORMATION OF CONTRACT

A contract for the sale and purchase of a Lot shall come into existence between the Seller and the Buyer on these Conditions upon acceptance by the Auctioneer of a bid by the Buyer.

3. BIDDING PROCEDURES AND THE BUYER

- 3.1 Bidders are required to register their particulars before bidding by completing a sale registration form and to satisfy any security arrangements before entering the auction room to view or bid.
- 3.2 Under the money laundering regulations in force we are required to verify the identity of all customers we transact with as well as any beneficiaries on behalf of whom they may transact. Customers who are unable to or refuse to supply required identification documents and proof of address may not be able to bid at our auctions. Copies of

customer due diligence checks will be stored for as long as it is necessary to satisfy legal requirements in an appropriate storage facility which for the avoidance of doubt may include storage solely in electronic form.

- 3.3 The maker of the highest bid accepted by the auctioneer conducting the sale shall be the buyer at the hammer price and any dispute about a bid shall be settled at the Auctioneer's absolute discretion by reoffering the Lot during the course of the auction or otherwise. The auctioneer shall act reasonably in exercising this discretion. The Auctioneer shall rule the bidding and no bid may be retracted.

- 3.4 The Buyer is the person who is successful in purchasing a Lot or Lots in accordance with these Conditions. Purchases made on behalf of a third party are the responsibility of the Buyer in the room. The Auctioneer reserves the right to bid on behalf of the Seller for any Lot and to withdraw, consolidate or divide any Lot or Lots.

- 3.5 Bidders shall be deemed to act as principals (i.e. not on behalf of or as the agent of any other person).

- 3.6 Our right to bid on behalf of the Seller is expressly reserved up to the amount of any reserve below the bottom estimate and the right to refuse any bid is also reserved.

4. INCREMENTS

Bidding increments shall be at the Auctioneer's sole discretion.

5. THE PURCHASE PRICE

The purchase price payable for a Lot is the hammer price plus a buyer's premium thereon of 25% plus VAT on the premium at the rate imposed by law and is payable in accordance with clause 7.

6. VALUE ADDED TAX.

Value Added Tax on the hammer price is imposed by law on all items affixed with a dagger or double dagger symbol. Value Added Tax is charged at the appropriate rate prevailing by law at the date of sale and is payable by buyers of relevant Lots. (Please refer to "Information for Buyers" for a brief explanation of the VAT position).7.

PAYMENT

- 7.1 Immediately a Lot is sold you will:

- (a) give to us, if requested, proof of identity, and
- (b) pay to us the total amount due in pounds sterling.

- 7.2 Any payments by you to us may be applied by us towards any sums owing from you to us on any account whatever without regard to any directions of you or your agent, whether expressed or implied.

- 7.3 In order to comply with money laundering regulations we reserve the right to require proof of source of funds and/or confirmation of the nature and source of wealth for all receipts of monies from clients directly or from third parties for payments on behalf of clients. The completion of the sale of a Lot will be postponed or cancelled at our discretion if further time is needed for investigation, or if you are in breach of your warranties as a buyer, or if we consider the sale to be unlawful or in any way cause liabilities or be detrimental to either us or the Seller.

8. TITLE AND COLLECTION OF PURCHASES

- 8.1 The ownership of any Lots purchased shall not pass to you until you have made payment in full in cleared funds to us of the total amount due.

- 8.2 You shall at your own risk and expense take away any lots that you have purchased and paid for no later than 14 working days following the day of the auction or upon the clearance of any cheque used for payment after which you shall be responsible for any removal, storage and insurance charges.

- 8.3 No purchase can be claimed or removed until it has been paid for.

9. REMEDIES FOR NON-PAYMENT OR FAILURE TO COLLECT PURCHASES

- 9.1 If any Lot is not paid for in full and taken away in accordance with these Conditions, or if there is any other breach of these Conditions, we, as agent for the Seller and on our own behalf, shall at our absolute discretion and without prejudice to any other rights we may have, be entitled to exercise one or more of the following rights and remedies:

- (a) to proceed against you for damages for breach of contract;
- (b) to rescind the sale of that Lot and/or any other Lots sold by us to you;
- (c) to resell the Lot (by auction or private treaty) in which case you shall be responsible for any resulting deficiency in the total amount due (after

- crediting any part payment and adding any resale costs). Any surplus so arising shall belong to the Seller;
- (d) to remove, store and insure the Lot at your expense and, in the case of storage, either at our premises or elsewhere;
 - (e) to charge interest at a rate not exceeding 1.5% per month on the total amount due to the extent it remains unpaid for more than fourteen working days after the sale;
 - (f) to retain that or any other Lot sold to you until you pay the total amount due;
 - (g) to reject or ignore bids from you or your agent at future auctions or to impose conditions before any such bids shall be accepted; or
 - (h) to apply any proceeds of sale of other Lots due or in future becoming due to you towards the settlement of the total amount due and to exercise a lien (that is a right to retain possession of) over any of your property in our possession for any purpose until the debt due is satisfied.
- 9.2 We shall, as agent for the Seller and on our own behalf pursue these rights and remedies only so far as is reasonable to make appropriate recovery in respect of breach of these Conditions
- 10. THIRD PARTY LIABILITY**
- 10.1 All bidders, buyers and other members of the public on our premises are there at their own risk and must note the lay-out of the accommodation and security arrangements. Accordingly neither the auctioneer nor our employees or agents shall incur liability for death or personal injury or for the safety of the property of persons visiting prior to or at a sale (except in each case as may be required by law by reason of our negligence)
- 11. COMMISSION BIDS**
- 11.1 Whilst prospective buyers are strongly advised to attend the auction and are always responsible for any decision to bid for a particular Lot and shall be assumed to have carefully inspected and satisfied themselves as to its condition and authenticity, we will if so instructed clearly and in writing execute bids on their behalf. Neither the auctioneer nor our employees or agents shall be responsible for any failure to do so.
- 11.2 Where two or more commission bids at the same level are recorded we reserve the right in our absolute discretion to prefer the first bid so made.
- 12. WARRANTY OF TITLE AND AVAILABILITY**
- 12.1 The Seller warrants to the auctioneer and you that the Seller is the true owner of the property consigned or is properly authorised by the true owner to consign for sale and is able to transfer good and marketable title to the property free from any third party claims.
- 12.2 We are acting as the agent of the Seller only and give no warranty as to the Seller's title to the Lot.
- 12.3 Save as expressly set out above, all other warranties, conditions or other terms which might have effect between the Seller and you, or us and you, or be implied or incorporated by statute, common law or otherwise are excluded to the fullest extent permitted by law.
- 13. TERMS OF SALE**
- The Seller and the Buyer acknowledge that Lots are sold subject to the stipulations of these Conditions (including the Information For Buyers) in their entirety and on the Terms of Consignment as notified to the Seller at the time of the entry of the Lot.
- 14. DESCRIPTIONS AND CONDITION**
- 14.1 Whilst we seek to describe Lots accurately, it may be impractical for us to carry out exhaustive due diligence on each Lot. Bidders are given ample opportunities to view and inspect before any sale and they (and any independent experts on their behalf) must satisfy themselves as to the accuracy of any description applied to a Lot. Bidders also bid on the understanding that, inevitably, representations or statements by us as to authorship, genuineness, origin, date, age, provenance, condition or estimated selling price involve matters of opinion. We undertake that any such opinion shall be honestly and reasonably held and accept liability for opinions given negligently or fraudulently.
- 14.2 Subject to the foregoing neither we the auctioneer nor our employees or agents nor the Seller accept liability for the correctness of such opinions and all conditions, attributions and warranties, whether relating to description, condition or quality of lots, express, implied or statutory, are hereby excluded.
- 14.3 We are not liable for damage to gilded picture frames, plaster picture frames or picture frame glass. If the Lot is, or becomes dangerous, we may dispose of it without notice to you in advance in any manner we see fit and will be under no liability for doing so. We shall not be liable for any damage to any Lot arising during the viewing, during the sale, or after the sale.
- 14.4 We act as agents only. Each Prospective Buyer by making a bid for a Lot acknowledges that they have satisfied themselves fully as to the attribution and condition of the Lot. Pictures have not been removed from their frames unless specifically mentioned in the Condition Report (as in the event the item is unsold it must be returned to the Seller in the condition it was received by us). This Condition is subject to deliberate forgeries (clause 17).
- 14.5 Private treaty sales made under these Conditions are deemed to be sales by auction for purposes of consumer legislation.
- 15. TRANSFER OF RISK.**
- 15.1 The risk in the Lot shall pass to the Buyer upon completion of the Sale by the Auctioneer.
- 15.2 We are not responsible for the correct description, genuineness or authenticity of any Lot as per these Conditions. The Buyer is deemed to have inspected each Lot and satisfied himself/herself to the condition.
- 16. OWNERSHIP OF THE LOT**
- Title to the Lot purchased will not pass to the Buyer until the Buyer has paid us in full and cleared funds the total amount due pursuant to these Conditions and we have applied such payment to the Lot.
- 17. FORGERIES**
- 17.1 Notwithstanding the preceding Condition, any Lot which proves to be a deliberate forgery (as defined) may be returned to us by you within 21 days of the auction provided it is in the same condition as when bought, and is accompanied by particulars identifying it from the relevant catalogue description and a written statement of defects. If we are satisfied from the evidence presented that the Lot is a deliberate forgery we shall refund the money paid by you for the Lot including any buyer's premium unless:
- (a) the catalogue description reflected the accepted view of scholars and experts as at the date of sale; or
 - (b) you personally are not able to transfer a good and marketable title to us,
- and in the event of clause 17.1 (a) or 17.1 (b) applying you shall have no rights under this condition.
- 17.2 The right of return provided by this clause 17 is additional to any right or remedy provided by law or by these Conditions.
- 18. PRIVACY NOTICE.**
- We will hold and process any personal data in relation to you in accordance with our current privacy policy, a copy of which is available on our website parkerfineartauctions.com
- 19. GENERAL**
- 19.1 We shall have the right, at our discretion, to refuse admission to our premises or attendance at our auctions by any person.
- 19.2 Any right to compensation for losses liabilities and expenses incurred in respect of and as a result of any breach of these Conditions and any exclusions provided by them shall be available to the Seller and/or the Auctioneer as appropriate.
- 19.3 Such rights and exclusions shall extend to and be deemed to be for the benefit of employees and agents of the Seller and/or the auctioneer who may themselves enforce them.
- 19.4 Special terms may be used in catalogue descriptions of particular classes of items in which case the descriptions must be interpreted in accordance with any glossary appearing in the catalogue.
- 20. NOTICES**
- Any notice to any buyer, seller, bidder or viewer may be given by first class mail or email in which case it shall be deemed to have been received by the addressee 48 hours after posting or in the event of email upon actual receipt of such email.

21. **NO WAIVER**
Any indulgence extended to bidders, buyers or sellers by us notwithstanding the strict terms of these Conditions or of the Terms of Consignment shall affect the position at the relevant time only and in respect of that particular concession only; in all other respects these Conditions shall be construed as having full force and effect.
22. **LIABILITY**
Nothing in these Conditions shall limit any liability which cannot legally be limited, including liability for:
(a) death or personal injury caused by negligence;
(b) fraud or fraudulent misrepresentation;
(c) breach of the terms implied by section 12 of the Supply of Goods Act 1979 (title and quiet possession) however attention is drawn to clause 12.2.
23. **LIMITATION OF LIABILITY TO NON-CONSUMERS**
(This clause 23 applies only to non-Consumers)
- 23.1 Subject to clause 22, and unless you are an individual purchasing or selling the Lot for purposes which are wholly or mainly outside your trade, business, craft or profession (**Consumer**), our total liability to either the Buyer of the Seller (as appropriate) shall not exceed the value of the Lot sold by the Seller to the Buyer. The following types of loss are wholly excluded by us:
(a) loss of profits;
(b) loss of sales or business;
(c) loss of agreements or contracts;
(d) loss of anticipated savings;
(e) loss of or damage to goodwill, and
(f) indirect or consequential loss.
- 23.2 Subject to clause 22, all conditions, warranties and other terms which might otherwise be implied by statute, common law or the law of equity, including without limitation the terms implied by sections 13 to 15 of the Sale of Goods Act 1979, are, to the fullest extent permitted by law, expressly excluded.
- 24.1 **LIMITATION OF LIABILITY TO CONSUMERS**
(This clause 24 applies only to Consumers)
- 24.1 Consumers are reminded that we act only as an agent of the Seller and are not the supplier of the Lots.
- 24.2 If the Auctioneer or the Seller fails to comply with these Conditions, it or they shall be responsible for loss or damage you suffer that is a foreseeable result of its or their breach of these Conditions or its or their negligence, but neither the Auctioneer nor the Seller shall be responsible for any loss or damage that is not foreseeable. Loss or damage is foreseeable if they were an obvious consequence of the breach or if they were contemplated by the Agent and/or the Seller and the Buyer at the time this contract was entered into.
25. **RIGHT TO CANCEL**
- 25.1 If you purchase a Lot at a virtual auction (an auction which is held online only so that there is no possibility for you to attend the auction in person) and you are contracting as a Consumer and the Seller of a Lot is a trader, you will have a statutory right to cancel your purchase of that Lot if you change your mind for any reason. The provisions below set out your legal right to cancel in those circumstances.
- 25.2 You may cancel your purchase at any time from the date of our order confirmation up to the end of the fourteenth day after the day of collection of the lot by you or the person specified by you for collection.
- 25.3 To cancel your purchase, you must inform us of your intention to cancel it. You can do this by completing the model cancellation form which can be found on our website. If you use this method we will email you to confirm that we have received your cancellation. Alternatively, you send us your cancellation notice by any other method and then your cancellation is effective from the date you send us the email or post the letter to us.
- 25.4 If you exercise your right to cancel your purchase, you will receive a refund of the total amount due paid for the Lot in accordance with clause 7. When exercising the cancellation right, you must return the lots to us immediately at your own cost (as set out below).
- 25.5 You are entitled to a reasonable opportunity to inspect the Lots (which will include removing them from their packaging and inspecting them). At all times, you must take reasonable care of the Lots and must not let them out of your possession. They must remain in original, untouched condition. If you are in breach of your obligations to take reasonable care of the Lots in this clause 25.4, we will have a claim against you and may deduct from the refund costs incurred by us as a result of the breach.
- 25.6 This provision does not affect your statutory rights.
- 25.7 The cancellation right described in this clause 25 is in addition to any other right that you might have to reject a Lot, for instance because it is a deliberate forgery as set out in clause 17 above.
26. **EXERCISING THE RIGHT TO CANCEL**
- 26.1 Where you have validly returned a Lot to us under your right of cancellation described in clause 25, we will refund the full amount paid by you for the Lot.
- 26.2 Please note that we are permitted by law to reduce your refund to reflect any reduction in the value of the Lot, if this has been caused by your handling of the Lot in a way contrary to the conditions specified in these terms or which would not be permitted during a pre-sale exhibition held prior to an auction. If we refund you the price paid before we are able to inspect the Lot and later discover you have handled the Lot in an unacceptable way, you must pay us an appropriate amount.
- 26.3 You will be responsible for returning the Lot to us at your own cost.
- 26.4 We will process any refund due to you within the deadlines below:
(a) if you have collected the Lot but have not returned it to us: fourteen days after the day on which we receive the Lot back from you or, if earlier, the day on which you provide us with evidence that you have sent the Lot back to us; or
(a) if you have not collected the Lot or you have already returned the Lot to us: 14 days after you inform us of your decision to cancel your contract.
- 26.5 We will refund you using the same means of payment that you used for the transaction.
- 26.6 Legal ownership of a Lot will immediately revert to the Seller if we refund any such payment to you.
- 27.1 **DISPUTES**
Any dispute not herein provided for shall be settled at the sole discretion of the Auctioneer.
28. **FORCE MAJEURE**
We shall not be in breach of these Conditions nor liable for the delay in performing, or failure to perform, our obligations under these Conditions (or otherwise) if such a delay or failure results from events, circumstances or causes beyond our reasonable control.
29. **ENTIRE AGREEMENT**
These Conditions constitute the entire agreement between the parties and supersede and extinguish all previous agreements, promises, assurances warranties representations and understandings between them, whether written or oral, relating to its subject matter. Except as set out in these Conditions, no variation of these Conditions shall be effective unless it is in writing and signed by the parties (or their authorised representative).
30. **IMAGES**
Prior written consent must be sought by the buyer or any other party for the use of any images, illustrations and written materials produced by or for Parker Fine Art Auctions Ltd relating to a lot or sale, including the contents of a catalogue. Copyright for any of the aforementioned will remain the property of Parker Fine Art Auctions Ltd, subject to the provisions of the Copyright, Design and Patents Act 1988. Parker Fine Art Auctions Ltd and the seller make no representations or warranties that the buyer of a lot will acquire any copyright to other reproduction rights to it.
31. **GOVERNING LAW AND JURISDICTION**
These Conditions shall be governed by and construed in accordance with English law and the parties irrevocably submit to the exclusive jurisdiction of the English courts.



PARKER
FINE ART AUCTIONS
Hawthorn House | East Street | Farnham | Surrey | GU9 7SX
Thursday 6th February 2025
01252 20 30 20
info@parkerfineartauctions.com
parkerfineartauctions.com

