



P A R K E R

FINE ART AUCTIONS

Fine Paintings & Frames Sale

Thursday 5th June 2025
at 11am



Forthcoming Fine Paintings & Frames Sale

10th July 2025



To consign to our sales is just £10 (+VAT) per lot
Includes all commission, illustration and insurance.
No other charges

PARKER

FINE ART AUCTIONS

Hawthorn House | East Street | Farnham | Surrey | GU9 7SX

Fine Paintings & Frames Sale

Thursday 5th June 2025

Paintings starting at 11am

Frames starting at 2pm

VIEWING

Friday 30th May 10am to 4pm

Saturday 31st May 10am to 2pm

Sunday 1st June 10am to 2pm

Monday 2nd June 10am to 4pm

Tuesday 3rd June 10am to 4pm

Wednesday 4th June 10am to 4pm

Thursday 5th June from 9am

Telephone bids and absentee bids will be accepted until 9am on the day of the sale.

01252 20 30 20 | info@parkerfineartauctions.com

LIVE ONLINE BIDDING AT



the-saleroom.com



easyliveauction.com

Each lot subject to a buyer's premium of 25% + VAT (plus additional online bidding fees where applicable)

Key to cover illustrations



Lot 246	Lot 196	Lot 168	Lot 307	Lot 318	Lot 321
Lot 126	PARKER FINE ART AUCTIONS Fine Paintings & Frames Sale Thursday 5th June 2025 at 11am	Lot 266	Lot 322	PARKER FINE ART AUCTIONS 01252 20 30 20 info@parkerfineartauctions.com parkerfineartauctions.com	Lot 338
Lot 143		Lot 117	Lot 340	Lot 351	Lot 358
Lot 185	Lot 247	Lot 201	Lot 372	Lot 389	Lot 412
Lot 112	Lot 237	Lot 203	Lot 420	Lot 430	Lot 493

Parker Fine Art Auctions Ltd

Hawthorn House, East Street, Farnham, GU9 7SX

Registered in England 12554522 VAT Registration No. 347 2406 07

All terms and conditions are on our website parkerfineartauctions.com

Please note: droite de suite is paid by the vendor



Photography by PRC Digital office@prcdigital.co.uk

British and European Paintings Pre 1850



1. 18th Century English School

A Set of Four Prints

"Sculpture", "Architecture", "Poetry" and "Painting"

Printed by John Bowles

In maple frames, each 9.75" x 13.5" (24.7 x 34.2cm) (4)

£200-£300



2. After Thomas Rowlandson (1756-1827) British

"A Templar at His Studies"

Print published by Thomas Tegg

8.25" x 12.5" (20.8 x 31.7cm)

£100-£150



3. Late 18th Century English School

"The Prodigal Son in Misery-The Prodigal Son Returns Reclaimed"

Print on glass

9.25" x 14" (23.5 x 35.5cm)

£100-£150



4. After Thomas Rowlandson (1756-1827) British
 "Evil be to him who evil thinks"
 Print
 Published by W Hixon
 12.25" x 8.75" (31.1 x 22.2cm)
 And five others by the same hand (6)
 £300-£400



5. After Wenceslaus Hollar (1607-1677) Bohemian
 A Set of Thirteen Engravings of Figure Studies
 Each 3.75" x 2.4" (9.5 x 6cm) (13)
 £200-£300

6. Early 19th Century English School
 "The Brazilian Green Macaw"
 Engraved by Edwards
 7" x 5" (17.8 x 12.7cm)
 And the companion piece "The Red Breasted Parrakeet"
 In maple frames (2)
 £100-£200



7. After George Morland (1763-1804) British
 "The Fruits of Early Industry & Oeconomy"
 Engraved by William Ward
 20.25" x 16" (51.4 x 40.6cm)
 And the companion piece "The Effects of Youthful
 Extravagance & Idleness", a pair (2)
 £100-£200



8. After Edward Penny
 (1714-1791) British
 "Widow Costard's
 Cow and Goods"
 Engraved by W Sedgwick
 12" x 10" (30.5 x 25.4cm)
 £100-£150



9. Butler Clowes
 (act.1768-1782) British
 "A School Boy"
 Print on glass
 In a period frame
 10.5" x 9" (26.7 x 22.8cm)
 £100-£150



10. J R Smith (18th Century) British
 'Mrs Fitz-Williams'
 Engraving
 Mounted unframed
 9.25" x 7.85" (23.5 x 20cm)
 And six other similar engravings by the same hand (7)
 £150-£250



11. 18th Century English School
 "The Light Guinea, or the Blade in the Dumps"
 Mezzotint in a period frame
 Published by Carington Bowles
 Overall 14.5" x 10.5" (36.8 x 26.7cm)
 £100-£200



12. Robert Dighton (1751-1814) British
 "Mr Braham in the Character of Orlando"
 Print
 9.5" x 7.25" (24.2 x 18.3cm)
 Together with three other prints of actors by various hands (4)
 £100-£150



13. After David Ogborne (fl.1740-1800) British
 “Mr Jacob Powell of Stebbing in Essex”
 Engraved by J Jones
 13” x 9.75” (33 x 24.8cm)
 £100-£200



14. Adam Francois Van der Meulen (1632-1690) Flemish
 “The Right Honorable the Marquis of Carnarvan”
 Print on glass in a period frame
 Engraved by A V Haecken
 Overall 14.5” x 10.5” (36.8 x 26.7cm)
 £100-£200



15. Nathaniel T Currier (1813-1888) British
 “Symbols of Natural Man”
 Lithograph
 Overall 5.25” x 4.25” (13.3 x 10.8cm)
 Together with two prints “Courtship” and “Matrimony” by another hand (3)
 £100-£200





16. After Lemuel Francis Abbott (1760-1803) British
 "The Society of Goffers at Blackheath"
 Print on Glass
 Engraved by V Green
 Overall 18.5" x 12.5" (47 x 31.8cm)
 £100-£200



17. Paul Sandby (1731-1809) British
 Figures by a Town Wall
 Sepia etching
 10.75" x 9.25" (27.3 x 23.4cm)
 £100-£150



18. Robert Dighton (1751-1814) British
 "George the III Aged 72 in 1810"
 Etching
 Overall 10.5" x 7.75" (26.7 x 19.7cm)
 £100-£150

19. After Peter Paul Rubens (1577-1640) Flemish
The Ceiling of the Banqueting House in Whitehall
Engraved by Simon Gribelin
12.25" x 17.75" (31.1 x 45.1cm)
£100-£150



20. After John Boydell (1719-1804) British
"A View of New Palace Yard
Westminster"
Engraving
9.25" x 16.25" (23.5 x 41.3cm)
And two other engravings by various hands (3)
£100-£150



21. 19th Century English School
"Britannia Weeping at the Monument of our Beloved and Universally regretted Queen Caroline. The Wife of George IV"
Hand coloured print by P & P Gally
6.5" x 8.5" (16.5 x 21.6cm)
And the companion piece "The Funeral Procession"
In period frames (2)
£100-£200



22. After Samuel Howitt (1756-1822) British
 "Shooters Coming by Surprise upon a Tiger"
 Engraved by H Merke
 Published by Edward Orme
 11.75" x 16.5" (29.8 x 41.8cm)
 £100-£200



23. After Samuel Howitt (1756-1822) British
 "Hunting a Hog Deer"
 Engraved by H Merke
 Published by Edward Orme
 12.25" x 17" (31.1 x 43.2cm)
 £100-£200



24. After Samuel Howitt (1756-1822) British
 "Driving a Tiger out of a Jungle"
 Engraved by H Merke
 Published by Edward Orme
 12.25" x 17" (31.1 x 43.2cm)
 £100-£200

25. **Samuel Wale (1721-1786) British**
"The Trial of Strafford"
 Watercolour
 Signed in pencil on the mount
 Unframed 3.6" x 4.6" (9.5 x 11.7cm)
 Together with the engraving of the work (2)
£200-£300



26. **Jean Restout Le Jeune (1692-1768) French**
A Kneeling Figure
 Chalk
 Inscribed
 17" x 19.75" (43.2 x 50.2cm)
£200-£300



27. **Attributed to Tomasso Bigatti**
(18th-19th Century) Italian
 Neo Classical Figures, with an external frieze
 Watercolour on vellum
 Overall 18.5" x 19.5" (47 x 49.5cm)
£200-£300





28. 17th Century Italian School

A Muse of Poetry

Chalk

With a collector's stamp, and inscribed verso

5.25" x 5.75" (13.4 x 14.6cm)

Provenance: Vallardi Collection; Raphael Valls Collection

£100-£200



29. John White Abbott (1763-1851) British

"Boat Building"

Ink

Inscribed on a label verso

5.25" x 8.5" (13.3 x 21.6cm)

Provenance: Appleby Bros Ltd, London

£100-£150



30. Circle of Charles Antoine Coypel (1694-1752) French

A Pair of Scenes from Jean Racine's 'Bayazet'

Ink and watercolour

Mounted as one (each) 3.75" x 2.4" (9.5 x 6.1cm) (2)

£100-£200



31. Barbier (early 19th Century) European

Figures in a River Landscape

Gouache

Signed and dated 1809

11" x 16" (27.9 x 40.6cm)

£200-£300

32. Attributed to Emanuel Jacob Handman
(1718-1781) Swiss
Portrait of a Lady
Pastel
Inscribed verso
17.25" x 13.25" (43.8 x 33.6cm)
£150-£250



33. After Jean-Antoine Watteau (1684-1721) French
Head of a Girl Looking Up
Chalk and sanguine
Inscribed on a label verso
11.5" x 7.75" (29.2 x 19.6cm)
£200-£300



34. After Balthasar Nebot (20th Century)
 "The Topiary Exhedra with a View of the Obelisk,
 Hartwell House, Buckinghamshire"
 Oil on canvas
 Unframed 53.75" x 72" (136.5 x 183cm)
 £200-£300



35. 20th Century Dutch School
 Still Life of Fruit with Monkeys and a Rabbit
 Oil on canvas
 Unframed 41.5" x 69.75" (105.4 x 177.2cm)
 £200-£400



36. 18th Century European School
 Courtiers in an Interior
 Oil on joined paper laid down
 Overall 36" x 52" (91.5 x 132.1cm)
 £200-£400



37. Circle of Francesco Solimena (1657-1747) Spanish

Cherubs and Satyr Rejoicing

Oil on canvas

Inscribed 'Nicola Poussino' verso

In a pearwood frame with a carved giltwood slip

8.5" x 25" (21.6 x 63.5cm)

Provenance: Edward-Douglas-Scott-Montagu, 3rd Baron Montagu of Beaulieu;

The Honorable Mary Montagu-Scott

£600-£800



38. Manner of Claude-Joseph Vernet (1714-1789) French

A Shipwreck

Oil on panel

Oval 5.5" x 7.4" (14 x 18.8cm)

£300-£400



39. After Georg Christian Sibbern (20th Century)

Figures in a River Landscape

Oil on canvas

46" x 55.75" (116.8 x 140.2cm)

£200-£300



40. 18th Century European School
Portrait of a Man
Oil on canvas
26" x 21.5" (66 x 54.6cm)
£300-£400



41. 20th Century English School
Full Length Portrait of a Boy with a Songbird
Oil on canvas
48" x 33.5" (122 x 85.1cm)
£200-£400



42. John Medina the Younger (1721-1796) British
 Wm. 4th, Duke of Queensberry (14th Earl of March)
 Oil on canvas
 Inscribed, and inscribed and dated 1754 verso
 30" x 25" (76.2 x 63.5cm)
 £1000-£2000



43. Circle of Thomas Lawrence (1769-1830) British
Bust Portrait of a Man
Oil on canvas
30" x 25" (76.2 x 63.5cm)
£400-£600



44. Circle of Benjamin von Block (1631-1690) German/Hungarian
Full Length Portrait of a Man in Armour
Oil on copper
16.25" x 12.5" (41.3 x 31.7cm)
£800-£1200



45. After Giovanni Antonio Canal 'Canaletto' (20th Century)
A Scene on the Grand Canal, Venice
Oil on canvas
Unframed 98" x 62.5" (248.9 x 158.8cm)
£200-£400



46. 18th Century Dutch School
Figures in a River Landscape
Oil on panel
23.25" x 36" (59 x 91.5cm)
£400-£600



47. After Joshua Reynolds (1723-1792) British
"Angel's Heads"
Oil on canvas
14" x 12" (35.5 x 30.5cm)
£200-£400



48. Early 19th Century French School
Bust Portrait of a Young Lady
Oil on board
In a carved giltwood frame
12" x 10.5" (26.7 x 30.5cm)
£200-£300



49. After George Morland (1763-1804) British
Figures by an Inn
Oil on panel
6" x 8" (15.2 x 20.2cm)
£200-£300



50. After Lodovico Cigoli (1559-1613) Italian
'The Sacrifice of Isaac'
Oil on canvas
43.5" x 31" (110.5 x 78.7cm)
£500-£800

British and European Paintings Pre 1900

51. Alphonse Legros (1837-1911) French/British
"L'Incendie"
Etching
Unframed 8.75" x 10.75" (22.2 x 27.3cm)
£100-£200



52. David Wilkie (1785-1841) British
"Oriental Sketches"
A set of twenty six prints of sketches in Turkey, Syria and Egypt
Included in the original book with frontispiece and list (26)
£300-£500

53. **Thomas Colman Dibdin (1810-1893) British**
A Street Scene in Rouen
 Watercolour
 Signed and dated 1869, and inscribed on the mount
 10.75" x 14.75" (27.3 x 37.4cm)
£300-£500



54. **Thomas Colman Dibdin (1810-1893) British**
"Amiens Cathedral"
 Watercolour
 Signed and dated 1880, and inscribed on the mount
 14.75" x 21" (37.4 x 53.2cm)
£300-£500



55. **Charles Leeson Rowbotham (1823-1875) British**
"Nice"
 Watercolour
 Signed, and inscribed on the mount
 6.5" x 9.5" (16.5 x 24.2cm)
£150-£250





56. **Helga von Cramm (1840-1919) Swiss**
The Old Church at Scherzligen
 Watercolour
 Signed, and inscribed on labels verso
 11.75" x 18.25" (29.8 x 46.3cm)
£100-£200



57. **Thomas Leeson Scarse Rowbotham (1782-1853) British**
By the Cottage Door
 Watercolour
 Signed and dated 1853, and indistinctly inscribed verso
 8.5" x 11.25" (21.6 x 28.7cm)
£100-£200



58. **19th Century English School**
The Grand Canal
 Watercolour
 Unframed 14.5" x 22.25" (36.9 x 56.5cm)
£200-£300

59. **William Fraser Garden (1856-1921) British**
 "From the Inn, Holywell, Hunts"
 Watercolour
 Inscribed on the mount and inscribed on labels verso
 5.5" x 10.75" (14 x 27.3cm)
 Provenance: Haynes Fine Art, Broadway
£100-£200



60. **William Fraser Garden (1856-1921) British**
 "Hemingford Abbots Church, Hunts"
 Watercolour
 Inscribed on mount and inscribed on labels verso
 6" x 10.5" (15.2 x 26.6cm)
 Provenance: Haynes Fine Art, Broadway
£100-£200

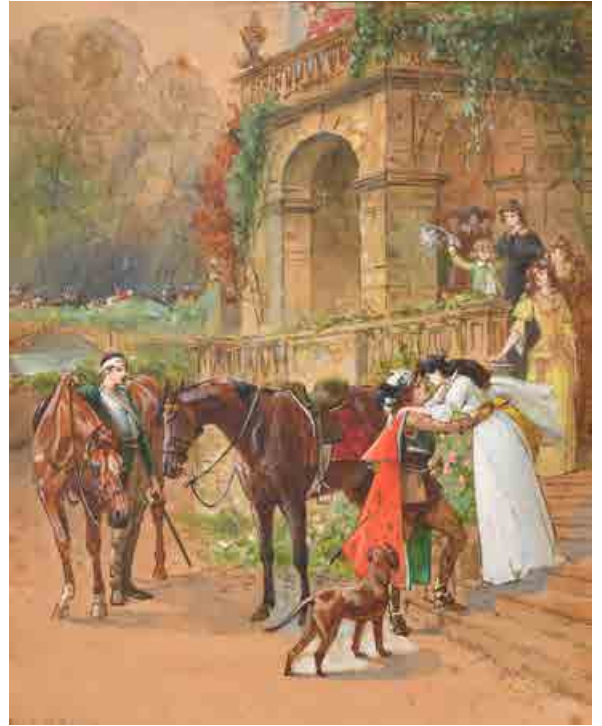


61. **Thomas Nicholson Tyndale (1860-1930) British**
 "Broadway, Worcestershire"
 Watercolour
 Signed, and inscribed on the mount
 9" x 13.25" (22.8 x 33.6cm)
£300-£400





62. 19th Century French School
 "Portrait a la mine de plomb"
 Pencil
 Inscribed verso
 Mounted unframed 5.5" x 4.6" (14 x 11.8cm)
 £100-£150



63. Samuel Edmund Waller (1850-1903) British
 "Safe"
 Watercolour
 Signed and dated '97 in pencil, and inscribed on the mount
 16.5" x 13.5" (42 x 34.3cm)
 Notes: This is a sketch for a larger oil
 £200-£300



64. Fred Hines (1852-1952) British
 "The Anglers Nook"
 Watercolour
 Signed and dated 1922
 22" x 15" (55.8 x 38.1cm)
 And a companion piece
 "Surrey Woodlands", a pair (2)
 £100-£200



65. **Reginald Augustus Wymer (1849-1935) British**
 "17th Lancers"
 Watercolour
 Signed and inscribed
 14" x 10" (35.5 x 25.4cm)
 £80-£120

66. **Orlando Norie (1832-1901) British**
 "The 17th Lancers, 1863"
 Watercolour
 Signed, and inscribed on the mount
 12.5" x 18.5" (31.7 x 47cm)
 Provenance: The Parker Gallery, London
 £300-£500



67. **Henry Bowser Wimbush (1861-1943) British**
 "Phul-Sagar, Bundi, Rajputana"
 Watercolour
 Signed, and inscribed on a label verso
 22" x 32.25" (55.9 x 81.8cm)
 £200-£400





68. **Alberto Pisa (1864-1930) Italian**
'Flower Merchants, Regent Street'
 Watercolour
 Signed, and inscribed on a plaque
 14" x 10" (35.5 x 25.4cm)
£200-£300



69. **Cesare Maccari (1840-1919) Italian**
Elegant Ladies Boarding a Gondola
 Watercolour
 Signed, inscribed Roma and dated 1873
 21.75" x 17.25" (55.3 x 43.8cm)
£300-£400



70. **Archibald Thorburn (1860-1935) British**
Study of a Bird
 Pencil
 3.5" x 1.4" (8.9 x 3.5cm)
 And another by the same hand (framed as one)
£100-£200



71. **William Turner of Oxford (1789-1862) British**
View of Snowdon
Watercolour
Signed, and inscribed on labels verso
10.25" x 14.5" (26 x 36.8cm)
Provenance: The Leger Galleries Ltd, London
£200-£300



72. **Attributed to Alberto Prosdocimi (1852-1925) Italian**
The Grand Canal, Venice
Watercolour
Bears a signature and date of 'David Roberts 1861'
10.75" x 22.5" (27.3 x 57.2cm)
£200-£300



73. **Robert Walker MacBeth (1848-1910) British**
"A Flower Stall in Normandy"
Watercolour
Signed, and signed and inscribed verso
7" x 9.5" (17.7 x 24.1cm)
£600-£800



74. **George G Fryer (1832-1912) British**
 "On the French Coast"
 Oil on canvas
 Signed and dated 1885, and signed and inscribed verso
 18" x 30" (45.7 x 76.2cm)
£300-£500



75. **Vincent Clare (1855-1930) British**
 Still Life of Spring Flowers on a Bank
 Oil on canvas
 Signed, and signed and inscribed verso
 9" x 13" (22.8 x 33cm)
£400-£600



76. **Henry Cheadle (1852-1910) British**
 A River Landscape, with cows grazing in the distance
 Oil on canvas
 Signed and dated '92
 14" x 21" (35.5 x 53.3cm)
£300-£400

77. **Adolf Stademann (1824-1895) German**
 Figures on a Frozen Lake
 Oil on panel
 Signed
 6.25" x 9" (15.8 x 22.8cm)
 £600-£800



78. **Werner Wilhelm Schuch (1843-1918) German**
 "Motiv aus Taormina mit Blick auf den Atna"
 Oil on canvas
 Signed
 Unframed 9.25" x 19" (23.5 x 48.2cm)
 Provenance: Dorotheum, Austria 6th December 2010,
 Lot 4
 £600-£800



79. **Attributed to George Turner (1843-1910) British**
 A Horse Drawn Cart, with figures by a cottage
 in the distance
 Oil on canvas
 26" x 41" (66 x 104.1cm)
 £400-£600





80. **Charles Leslie (1839-1886) British**
 "Morning on the Thames at Shiplake"
 Oil on canvas
 Signed, and inscribed on the slip
 14" x 20.5" (35.5 x 52.1cm)
£600-£800



81. **James Seymour Adams (fl.1883-1888) British**
 'Member of the Commons'
 Oil on canvas
 Signed
 16" x 24" (50.8 x 61cm)
£400-£600



82. **Robert John Hammond (1853-1911) British**
 "Blackstone Rock, Bewdley, on the River Severn, Worcestershire"
 Oil on canvas
 Signed, and inscribed verso
 16" x 24" (40.6 x 61cm)
£400-£600

83. Maxime Dastugue (1851-1909) French
 'Camel Train Passing the Tombs of
 Caliphs Qarafa, Cairo'
 Oil on canvas
 Signed
 25.5" x 36" (64.8 x 91.5cm)
 £800-£1200



84. William Shayer (1787-1879) British
 "A Good Ale"
 Oil on panel
 Signed, and inscribed on the plaque
 17" x 23.75" (43.2 x 60.3cm)
 £800-£1200



85. 19th Century European School
Ruins
Oil on canvas
Unframed 28.75" x 21.25" (73.1 x 54cm)
£100-£150



86. Circle of David Woodlock (1842-1929) British
The Flirtation
Oil on canvas
17.25" x 12" (43.7 x 30.5cm)
£100-£150



87. G A Turner (19th Century) British
The Hawking Party
Oil on canvas
Signed and dated 1844
21" x 17" (53.3 x 43.2cm)
£300-£500



88. E Bristow (19th-20th Century) British
Feeding Time
Oil on canvas
Signed
15.5" x 12.5" (39.3 x 31.7cm)
£300-£500



89. Erskine Nicol (1825-1904) British
 'Sharing the Pot'
 Oil on board
 Indistinctly signed
 14" x 11" (35.5 x 28cm)
 £600-£800



90. Eduard Gotzelmann (1830-1903) Austrian
 'Cattle Moving to Summer Grazing'
 Oil on canvas
 Signed and dated 1887, and inscribed on a label verso
 31" x 24.75" (78.8 x 62.8cm)
 £500-£700



91. Thomas Creswick (1811-1869) British
 "Kenilworth Castle, Warwickshire"
 Oil on board
 Inscribed on the slip
 Painted oval, 10" x 8" (25.4 x 20.3cm)
 And the companion piece, "In the Pass of the Trossachs, Scotland", a pair (2)
 £500-£700



92. **Julia Bertha (19th-20th Century) British**
A River Landscape
Oil on canvas
Signed
14" x 21.25" (35.5 x 54cm)
£100-£150



93. **Joseph Thors (1835-1920) British**
A River Landscape, with a church in the distance (believed to be Weybridge)
Oil on panel
Signed
8.5" x 10.25" (21.6 x 26cm)
£200-£300



94. **William B Young (1845-1916) British**
A Mountainous River Landscape
Oil on canvas
Signed
12" x 18" (30.5 x 45.7cm)
£150-£250



95. **19th Century Continental School**
Mother and Child
Oil on canvas
15.5" x 21" (39.4 x 53.3cm)
£150-£250



96. **Circle of John Anthony Puller (act. 1821-1867) British**
A Highland Landscape, with figures by a cottage door and a hilltop castle
Oil on canvas
Bears a signature
12" x 16" (30.5 x 40.6cm)
£150-£250



97. **After Edgar Degas (20th Century)**
"Freize of Dancers"
Oil on canvas
27.5" x 78" (69.8 x 198cm)
£200-£400



98. Henry Andrews (1794-1868) British
The Hawking Party
Oil on canvas laid on to a three-fold screen
Overall 69.5" x 69.5" (176.5 x 176.5cm)
£400-£600



99. **Alfred Augustus Glendening (1840-1921) British**
A Thames Scene, with a man collecting eel traps
Oil on canvas
Signed
16" x 30" (40.6 x 76.2cm)
Provenance: Cooling Galleries, London
£600-£800



100. **Frank Wasley (1848-1934) British**
A Capriccio River Scene
Oil on canvas
Signed
Unframed 22" x 30.75" (55.8 x 78.1cm)
£300-£400



101. **Grigory Kapustin (1865-1925) Russian**
A River Scene at Dusk
Oil on canvas
Signed
11" x 21.25" (27.9 x 54cm)
£400-£600



102. **John Brandon Smith (1848-1884) British**
A Fisherman in a River Landscape
 Oil on canvas
 Signed
 18" x 32" (45.7 x 81.3cm)
£500-£700



103. **Charles Cooper Henderson (1803-1877) British**
"Carlisle to York, Royal Mail Coach"
 Oil on canvas
 Inscribed on a label verso
 17" x 26.5" (43.2 x 67.3cm)
£500-£700



104. **Alfred Provis (1818-1890) British**
 "Her Firstborn"
 Oil on canvas
 Signed and dated 1869, Inscribed on the slip
 14" x 20.25" (35.5 x 51.4cm)
 £500-£700



105. **Edward Charles Williams (1807-1881) British**
 Figures in a Coastal Scene
 Oil on panel
 12" x 16.25" (30.5 x 41.2cm)
 £300-£400



106. **William E Harris (1860-1930) British**
 "Boveney Lock, on the Thames, near Windsor"
 Oil on canvas
 Signed and dated '89, and inscribed verso
 14" x 21" (30.5 x 53.3cm)
 £400-£600



107. Attributed to George Inness (1825-1894) American
A River Landscape at Dusk
Oil on canvas
41" x 60" (104.2 x 152.4cm)
£6000-£8000



108. 19th Century English School
Portrait of a Man
Oil on canvas
Unframed 30" x 25" (76.2 x 63.5cm)
£200-£300



109. 19th Century English School
Portrait of a Lady
Oil on canvas
Unframed 30" x 25" (76.2 x 63.5cm)
£300-£400



110. Circle of George Richmond (1809-1896) British
Portrait of a Lady Seated by a Window
Oil on canvas
35.5" x 27.25" (90.1 x 69.2cm)
£300-£500



111. John Ponsford (1790-1870) British
Bust Portrait of a Lady
Oil on canvas
Signed
Unframed 30" x 25" (76.2 x 63.5cm)
£300-£500



112. Lizzie May Watson (19th-20th Century) British
Girl with a Fan
Oil on canvas
Signed and dated 1888
20" x 16" (50.8 x 40.6cm)
£500-£700

113. Ellen Stevens Bromley Phillips
(19th Century) American
Portrait of the Artist's Wife
Oil on canvas
Signed and dated 1873
30" x 25" (76.2 x 63.5cm)
£300-£400



Marines



114. **Frederick Miller (1850-1917) British**
An Estuary Scene at Dusk
Watercolour
Signed and dated 1880
12.5" x 18.25" (31.7 x 46.3cm)
£200-£300



115. **William Joseph Julius Caesar Bond (1833-1926) British**
A Harbour Scene
Watercolour
Signed and dated '80
11.5" x 15.25" (29.2 x 38.7cm)
£200-£300



116. **George Gregory (1849-1938) British**
Sailing off Cowes, Isle of Wight, with the Royal Yacht
Squadron in the distance
Watercolour
Signed and dated 1909
9.5" x 18.5" (24.2 x 47cm)
£300-£400



117. **Charles Dixon (1872-1934) British**
 “The Liner Orizaba in the Pool of London”

Watercolour

Signed and inscribed “To be finished when (ala) Phil gets spliced”, and dated 14/12/97 and 1915

17.5” x 31.5” (44.4 x 80cm)

Provenance: Pym's Gallery, London

£1000-£1500



118. **J Maurice Hosking (19th-20th Century) British**
 "Fishing Boats off Penzance"
 Gouache
 Signed, and inscribed in pencil verso
 8.5" x 16.5" (21.6 x 41.9cm)
 And the companion piece, "Trawler and Drifter off Lowestoft", a pair (2)
£150-£250



119. **Edwin John Ellis (1842-1895) British**
 Unloading the Catch by a Harbour Wall
 Oil on canvas
 Signed
 18" x 32" (45.7 x 81.3cm)
£300-£500



120. **David Mellor (20th Century) British**
 'Clipper Ship Thermopylae'
 Oil on canvas
 Signed and dated 1984, and inscribed in pencil verso
 17.5" x 19.5" (44.4 x 49.5cm)
£300-£400



121. 18th Century English School
A Pair of Naval Engagements
Oil on copper
In painted carved giltwood frames
3.25" x 4.25" (8.3 x 10.8cm) (2)
£600-£800



122. Circle of Frederick Calvert (1785-1845) British
Shipping by a Harbour Wall
Oil on canvas
16.75" x 21" (42.5 x 53.3cm)
And a companion piece, a pair (2)
£400-£600



123. William McAlpine (19th-20th Century) British
Boats in Choppy Waters
Oil on canvas
12" x 24" (30.5 x 61cm)
£200-£300



124. 20th Century American School
A Flotilla of Tall Ships with Paddlesteamers in the foreground
Oil on canvas
29.5" x 39.5" (75 x 100.3cm)
£300-£400

125. **Circle of J J Everard (act. 1845-1887) British**
Sailing Boats off the Coast
 Oil on canvas
 20" x 27" (50.8 x 68.6cm)
£300-£500



126. **Thomas Luny (1759-1837) British**
A Frigate entering the Tamar at Plymouth
 Oil on panel
 Signed
 9.75" x 14" (24.8 x 35.5cm)
£600-£800



127. **William Thornley (1857-1935) British**
A Beach Scene with Figures around a Fire
 Oil on canvas
 Signed
 14" x 12" (35.5 x 30.5cm)
£400-£600



128. **Edwin Hayes (1819-1904) British**
"Southwold Harbour"
 Oil on board
 Signed, and inscribed on the slip
 7" x 11.5" (17.8 x 29.2cm)
£300-£400

Sporting and Animalia



129. After James Armstrong (19th Century) British
 "Celebrated Greyhounds, Joan and Muriel"
 Lithograph
 In a maple frame
 16" x 21.75" (40.6 x 55.3cm)
 And another by the same hand "Honeymoon" (2)
 £100-£200



130. After James Seymour (1702-1752) British
 A Horse Courser selling a Nag
 Engraved by T Burford
 9.5" x 13.65" (24.2 x 34.8cm)
 And a companion piece, a pair (2)
 £100-£150



131. Norbertine von Bresslern-Roth (1891-1978) Austrian
 "Dog"
 Linocut
 Signed and inscribed in pencil
 8.75" x 10.5" (22.2 x 26.7cm)
 £200-£300



132. After James Pollard (1792-1867) British

"St. Albans Grand Steeple Chase" (plate 1)

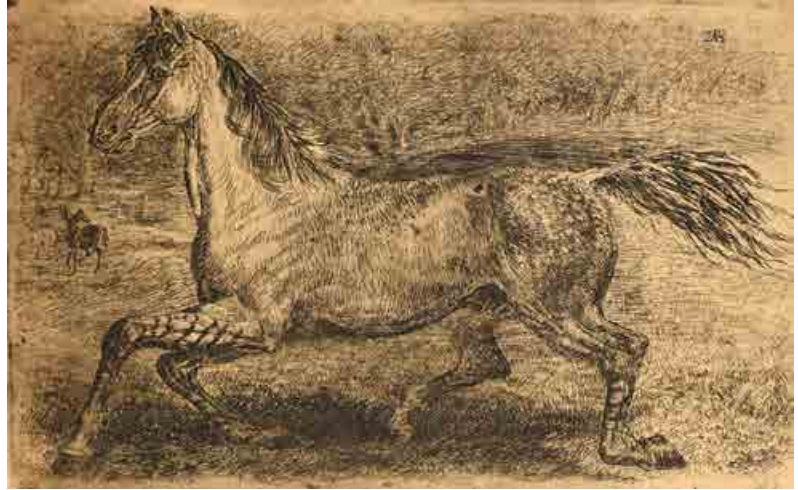
Engraved by G&C Hunt

12" x 17" (30.5 x 43.2cm)

Together with plates 2 to 6, and the print with the key to the riders' names (in a set of four maple frames and three others) (7)

£200-£300

133. After James Ward (1769-1859) British
Study of a Horse
Etching
Unframed 7.75" x 12.25" (19.7 x 31.1cm)
And twenty four etchings by the same hand (25)
£200-£400



134. After Fores of Piccadilly (20th Century) British
"A Match at Hambledon 1777", "The Cradle of Cricket"
Print
11.5" x 18.25" (29.2 x 46.3cm)
Notes: First published by Fores of Piccadilly
£100-£150



135. Late 19th Century English School
Donkey and Puppy
Watercolour
Signed with initials TH and dated 1881
14.5" x 21.5" (36.8 x 54.6cm)
£100-£200

136. Cecil Aldin (1870-1935) British
'Wolfhound asleep on Sofa'
Black crayon
Signed with initials in pencil, and inscribed on labels verso
8.5" x 11.25" (21.6 x 28.6cm)
Provenance: The Rae-Smith Gallery
£300-£400





137. **Wright Barker (1864-1941) British**
 Head of a Dog
 Oil on canvas
 With incised signature and inscription "To my friend T Phillips"
 10.75" x 8.5" (27.3 x 21.6cm)
£300-£500



138. **Lionel Dalhousie Robertson Edwards (1878-1966) British**
 Master of the Hunt with his Hounds
 Oil on canvas
 Signed and dated 1913
 14" x 10" (35.5 x 25.4cm)
£400-£600

139. Lalique (19th-20th Century) European
Catwoman
Oil on canvas
Signed
20.25" x 16" (51.4 x 40.6cm)
£400-£600



140. William Baptiste Baird (1849-1929) American
Chicken with her Chicks
Oil on panel
Signed
8.5" x 6.25" (21.6 x 15.8cm)
£500-£700



141. Circle of John Frederick Herring (1795-1865) British
At The Watering Trough
Oil on canvas
20" x 28" (50.8 x 71.2cm)
£400-£600



142. George Paice (1854-1925) British
"Budge"
Oil on canvas
Signed, inscribed and dated '20
9" x 12" (22.8 x 30.5cm)
£300-£400



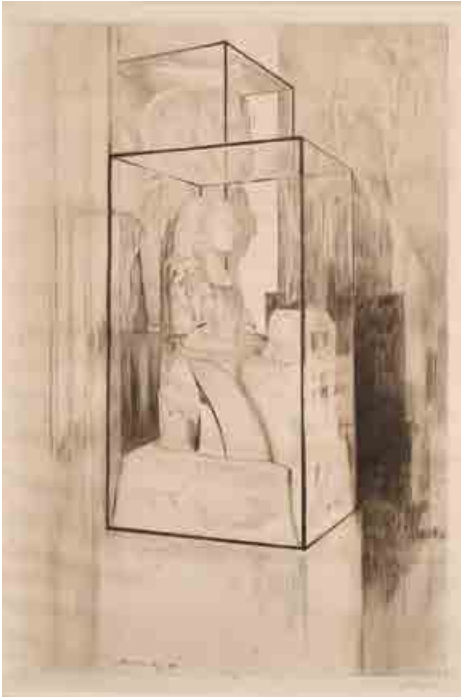
143. 19th Century English School
A Racehorse with a Jockey Up
Oil on canvas
With incised initials HM and dated 1841
12" x 16" (30.5 x 40.6cm)
£300-£400

144. William Nedham
(act.1823-1849) British
A Saddled Bay Hunter with Groom
Oil on canvas
12" x 16" (30.5 x 40.6cm)
£500-£700



145. Late 18th Century English School
A Primitive Study of a Boar
Oil on panel
11.5" x 15" (29.3 x 38.1cm)
£300-£400

British and European Paintings Post 1900



146. James Hamilton Hay (1874-1916) British
"The Encased Statue"

Etching

Signed in pencil

13.5" x 8.75" (34.3 x 22.2cm)

£80-£120



147. Charles H Mayer (Early 20th Century) American
"Murray Hill", New York

Etching

Inscribed in pencil

11" x 6.85" (27.9 x 17.5cm)

£100-£200



148. Lionel Lindsay (1874-1961) Australian
"Sunday Camp"

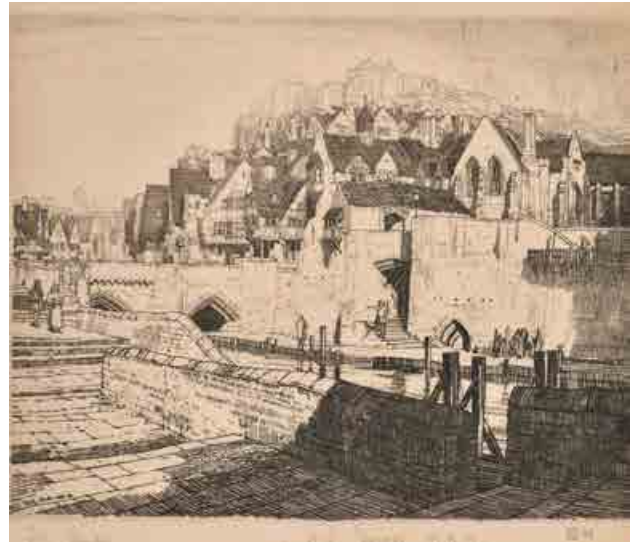
Etching

Signed, inscribed and numbered 22

4.4" x 4.85" (11.1 x 12.4cm)

And two others by the same hand "The Pawnbroker, Argle, CW, Sydney"
and "Old Burwood Hotel, Sydney" (3)

£100-£150



149. Frederick Landseer Maur Griggs (1876-1938) British
"The Quay"

Studio Magazine Print

Bears a signature and inscriptions

6" x 7" (15.2 x 17.7cm)

£200-£300



150. After Paul Cesar Helleu (1859-1927) French
A Set of Sixteen Portraits
Print
Inscribed on labels verso
12.25" x 6.75" (31.1 x 17.2cm) (16)
£300-£500



151. Kiyosada Torii (1844-1901) Japanese
"Ichikawa Danjuro IX in Kan'u"
Woodblock
unframed (overall) 14.25" x 9.25" (36.2 x 23.9cm)
Notes: From the series 'Eighteen Best Kabuki Plays'
£100-£150



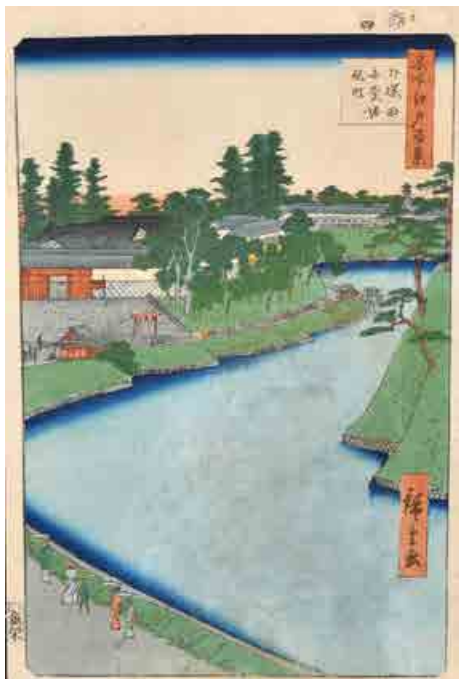
152. Utagawa Kunisada III (1848-1920) Japanese
Kabuki Play Triptych
Woodblock on three sheets
Unframed (each) 9.75" x 7.25" (24.9 x 18.4cm) (3)
£150-£250



153. Sadanobu Hasegawa (1809-1879) Japanese
Kabuki Play Triptych
Woodblock on three sheets
Unframed (each) 14" x 9.25" (35.5 x 23.5cm) (3)
£150-£250



154. Sadahide Utagawa (1807-1873) Japanese
"Map of the Ise Province"
Woodblock on three sheets
Unframed (each) 15" x 10" (38 x 25cm) (3)
£150-£250



155. **Hiroshige Utagawa (1797-1858)** Japanese
 "Benkei Moat from Soto Sakurada to Kojimachi"
 Woodblock
 With artist's stamp beyond the image
 Unframed 13.25" x 8.75" (34 x 22.4cm)
 Notes: This work is from the collection of
 'One Hundred Famous Views of Edo'
 £400-£600



156. **Hiroshige Utagawa (1797-1858)** Japanese
 "Nihonbashi Clearing After Snow"
 Woodblock
 Unframed 13.25" x 8.75" (34 x 22.5cm)
 Notes: This work is from the collection of
 'One Hundred Famous Views of Edo'
 £400-£600



157. **Chikanobu Yoshu (1838-1912)** Japanese
 "New Year's Day"
 Woodblock on joined sheets
 Inscribed verso
 Unframed 13.75" x 27" (35.2 x 68.9cm)
 £150-£250



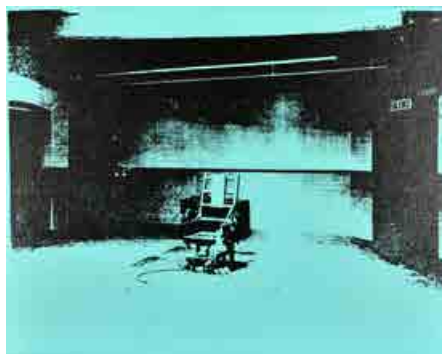
158. **Hasui Kawase (1883-1957) Japanese**
 "Chion-in Temple, Kyoto"
 Woodblock
 With artist's stamp and inscribed in pencil
 14.25" x 9.5" (36.2 x 24.1cm)
 £400-£600



159. **Andre Masson (1896-1987) French**
 "Bird Form"
 Lithograph
 Signed in pencil
 19" x 25" (48.2 x 63.5cm)
 £100-£200



160. **Theo Tobiasse (1927-2012) Israeli**
 "La Danse des Hommes"
 Lithograph
 Signed and inscribed HC in pencil,
 and inscribed verso
 18" x 23.5" (45.7 x 59.7cm)
 £100-£200



161. **After Andy Warhol (1928-1987) American**
 "Electric Chair (Black)"
 Print and crystal dust on canvas
 22" x 28" (55.8 x 71.1cm)
 Together with "Electric Chair (Blue)" and "Electric Chair (Green)" (3)
 £100-£200



162. After Edouard Courchinoux (1891-1968) French
 "Le Touquet, Paris-Plage"
 Lithograph by G Feure
 Signed and numbered 220/300 in pencil
 25.75" x 18.75" (65.5 x 47.5cm)
 £200-£300



163. Joan Miro (1893-1983) Spanish
 "La Punaise Petite"
 Lithograph
 Signed and inscribed HC
 20.5" x 14.5" (52.1 x 36.8cm)
 £300-£500



164. Joan Miro (1893-1983) Spanish. Abstract
 Lithograph
 Signed with initials in pencil
 29.5" x 22" (75 x 55.9cm)
 £100-£200



165. Elyse Ashe Lord (1900-1971) British
"White Cloak"

Hand coloured etching, with gold paint and watercolour
Inscribed in pencil
Unframed 18" x 13.5" (45.7 x 34.3cm)
£200-£300



166. Elyse Ashe Lord (1900-1971) British
"Gargoyle, Ely"

Drypoint
Inscribed in pencil, and inscribed on a label verso
2.25" x 5" (5.7 x 12.7cm)
£100-£150



167. Elyse Ashe Lord (1900-1971) British
"En Route"

Gouache and pencil
Signed
Mounted unframed 14" x 17.25" (35.5 x 43.8cm)
£100-£200



168. Laurence Stephen Lowry (1887-1976) British
 "Station Approach"
 Lithograph with blind stamp
 Signed in pencil
 15.75" x 19.75" (40 x 50.2cm)
 £2000-£3000



169. After Marc Chagall (1887-1985) French
 "La Petite Ecuyère (The Little Horsewoman)"
 Lithograph
 7" x 10.5" (17.8 x 26.7cm)
 £200-£300



170. Andre Brasilier (1929-) French
 "La Baignade"
 Lithograph
 Signed and numbered 138/175 in pencil
 20.5" x 26.5" (52.1 x 67.3cm)
 £100-£150



171. Marjorie Sherlock (1891-1973) British
 "Waterloo Bridge seen through Hungerford Bridge"
 Etching
 Signed and numbered '5' in pencil
 Mounted, unframed 6.3" x 12.75" (16 x 32.4cm)
 Notes: This etching shows the attempts to repair Old Waterloo Bridge which continued until 1923. The bridge was closed in 1924 and demolished in 1934
 £300-£400



172. Elisabeth Frink (1930-1993) British
 "Corrida I"
 Lithograph
 Signed and numbered 25/70 in pencil
 21.25" x 30" (54 x 76.2cm)
 £300-£400



173. Guillaume Cornelis van Beverloo 'Corneille' (1922-2010) Belgian
 "L'Africaine"
 Colour aquatint etching
 Signed 'Corneille', dated 92/94 and numbered 59/60 in pencil
 Unframed 47" x 35" (119.4 x 88.9cm)
 £300-£400



174. 20th-21st Century English School
Red Sphere
Metal
Overall 16" x 16" x 16" (40.6cm)
£100-£200



175. Christopher Webb
(20th-21st Century) British
"Melifilous"
Granite on a marble base
11.5" x 11.5" x 10" (29.2 x 29.2 x 25.4cm)
£100-£200

176. **Laura Knight (1877-1970) British**
 'A Dressing Room (Nijinsky)'
 Charcoal
 Signed with initials and inscribed in pencil
 9.25" x 11.25" (23.4 x 29.8cm)
 Provenance: John Savident (Actor 1938-2024)
 £300-£500



177. **Wycliffe Egginton (1875-1951) British**
 An Open Landscape
 Watercolour
 Signed
 10" x 14" (25.4 x 35.5cm)
 £200-£300



178. **Rowland Suddaby (1912-1972) British**
 'Bowl of Fruit, c.1946'
 Watercolour and ink
 Inscribed on a label verso
 17" x 19.75" (43.2 x 50.2cm)
 Provenance: Austin/Desmond Fine Art Limited,
 Berkshire, July 1987
 £400-£600





179. **Muirhead Bone (1876-1953) British**
 "Chateau Chillon"
 Pencil
 Signed, inscribed and dated 1930 in pencil
 5" x 7.75" (12.7 x 19.7cm)
£100-£150



180. **William Giles (1872-1939) British**
 "Time & Tide Bedruthan Steps, Cornwall"
 Watercolour
 Signed, and inscribed verso
 9" x 11.5" (22.8 x 29.2cm)
£100-£200



181. **20th Century English School**
 Figures at a Market
 Pencil
 7.5" x 10.5" (19 x 26.7cm)
£100-£150



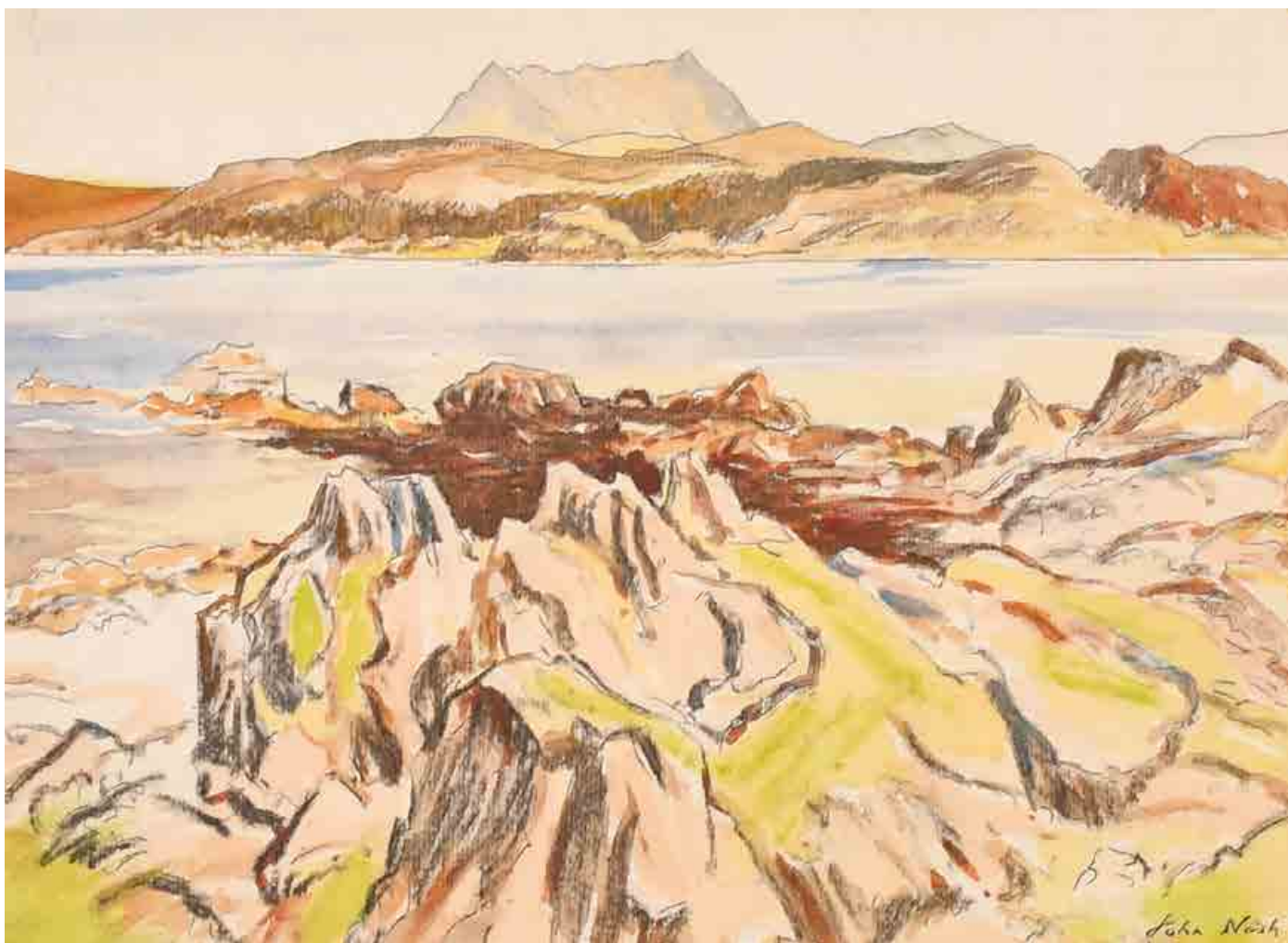
182. **20th Century English School**
 A Horse Drawn Cart
 Ink
 Inscribed on a label verso
 7" x 10.5" (17.8 x 26.7cm)
 Provenance: Pierre-Claude Beurencontre
£100-£150



183. **Georges Manzana-Pissarro (1871-1961) French**
 Cockerel Study
 Watercolour
 Signed with studio stamp
 8.75" x 13.5" (22.2 x 34.2cm)
£100-£150



184. **Henry John Sylvester Stannard (1870-1951) British**
 "Broadway Village Green"
 Watercolour
 Signed, and inscribed on a label verso
 10.5" x 14.5" (26.7 x 36.8cm)
£200-£300



185. John Northcote Nash (1893-1977) British

"The Scottish Island of Iona"

Watercolour and pencil

Signed, and inscribed on a label verso

10.25" x 14.25" (26 x 36.1cm)

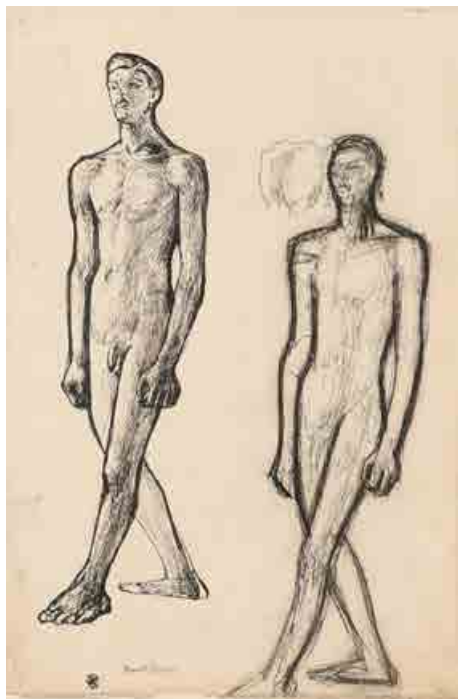
£1500-£2000



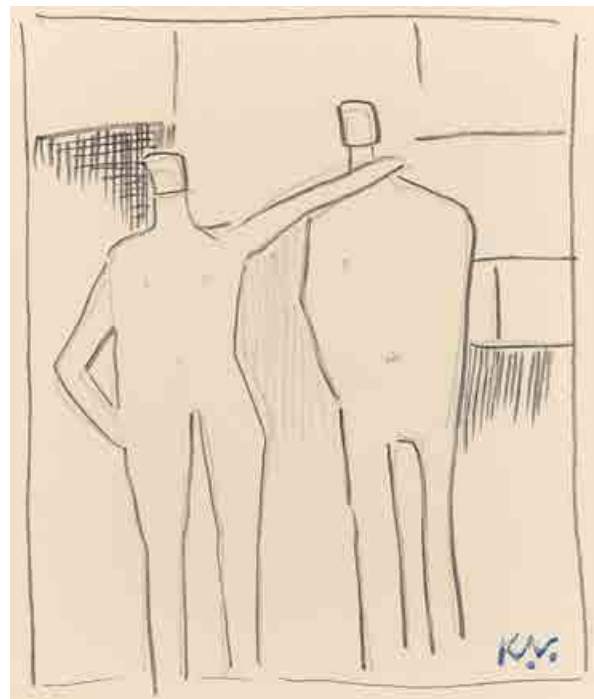
186. **Christiane Brix Klitgaard-May (1876-1954) Danish**
A Young Woman Holding a Vase
 Pastel
 Signed, and inscribed on a label verso
 19.5" x 14" (49.5 x 35.6cm)
£100-£150



187. **Lucien Davis (1860-1941) British**
The Last Will
 Gouache
 Signed
 6.5" x 5.75" (16.5 x 14.6cm)
£100-£150



188. **Barnett Freedman (1901-1958) British**
Standing Figures
 Ink
 Signed with artist's stamp
 14.25" x 9.75" (36.2 x 26.7cm)
£100-£200



189. **After Keith Vaughan (1912-1977) British**
Study of Two Figures
 Pencil
 Bears studio stamp
 7.25" x 6.25" (18.3 x 15.8cm)
£100-£150



190. Janet Cumbrae Stewart (1883-1960) Australian
Bust Portrait of a Lady
Pastel
Inscribed verso
18.5" x 14" (47 x 35.5cm)
£300-£400



191. William Nicholson (1872-1949) British
Study of an Artist, drawn at Herkomer's School
Pencil
Inscribed verso
31.5" x 21.25" (80 x 54cm)
Provenance: Grindley & Palmer, Liverpool
£200-£400



192. Edward Hill Lacey (1891-1967) British
Portrait of a Lady
Pencil
Signed, and inscribed on a label verso
10" x 7.5" (25.4 x 19cm)
£200-£300



193. **Henri Martin (1860-1943) French**
 "Kleines Bergdorf, Austria"
 Pencil and chalk
 Signed and dated '89 in pencil
 7.5" x 9.5" (19 x 24.1cm)
£300-£400



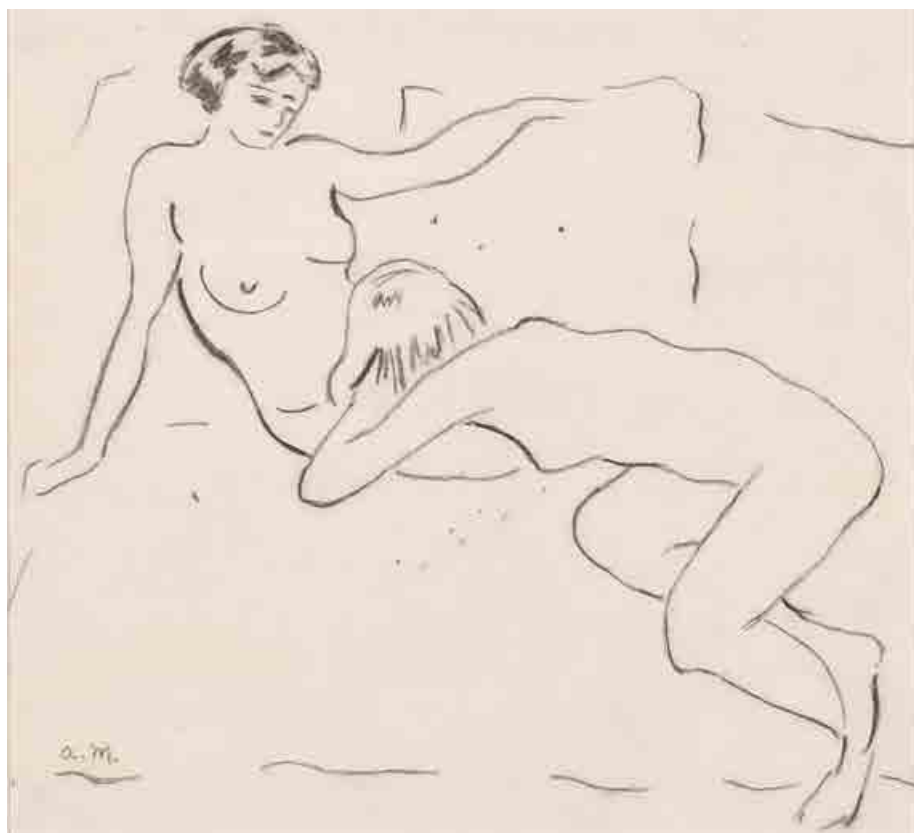
194. **John Cosmo Clark (1897-1967) British**
 "Hammersmith Bridge"
 Watercolour
 Signed and dated 1959
 8" x 13" (20.3 x 33cm)
£150-£250



195. **Hector Caffieri (1847-1932) British**
 "A Busy Quayside in Brittany with Fishing Boats Returning"
 Watercolour
 Signed
 14" x 20.25" (35.5 x 51.4cm)
 Provenance: Richard Hagen Fine Paintings, Broadway
£300-£400



196. **John Fraser (1858-1927) British**
A Traveller's Encampment
 Watercolour
 Signed and dated 1918
 17" x 29.5" (43.2 x 74.9cm)
£600-£800



197. **Attributed to Albert Marquet (1875-1947) French**
"Les Deux Amies Erotique"
 Charcoal
 Signed with initials
 9" x 9.5" (22.8 x 24.1cm)
£400-£600



198. After Federico Zandomenighi
(1841-1917) Italian
Female Nude
Pastel
Bears a signature
25.5" x 21.25" (64.7 x 55.8cm)
£100-£200



199. Circle of Paul Cesar Helleu (1859-1927) French
Lady Playing Tennis
Pastel
Unframed 25" x 19" (63.5 x 48.2cm)
£200-£300



200. Attributed to Paul Cesare Helleu (1859-1927) French
Bust Portrait in a Pink Scarf
Pastel
31" x 24.5" (78.8 x 62.2cm)
£800-£1200



201. **Gerald Leslie Brockhurst (1890-1978) British**

Portrait of Oliver Duane Odysseus 'Noll' Gogarty

Watercolour

Signed in pencil

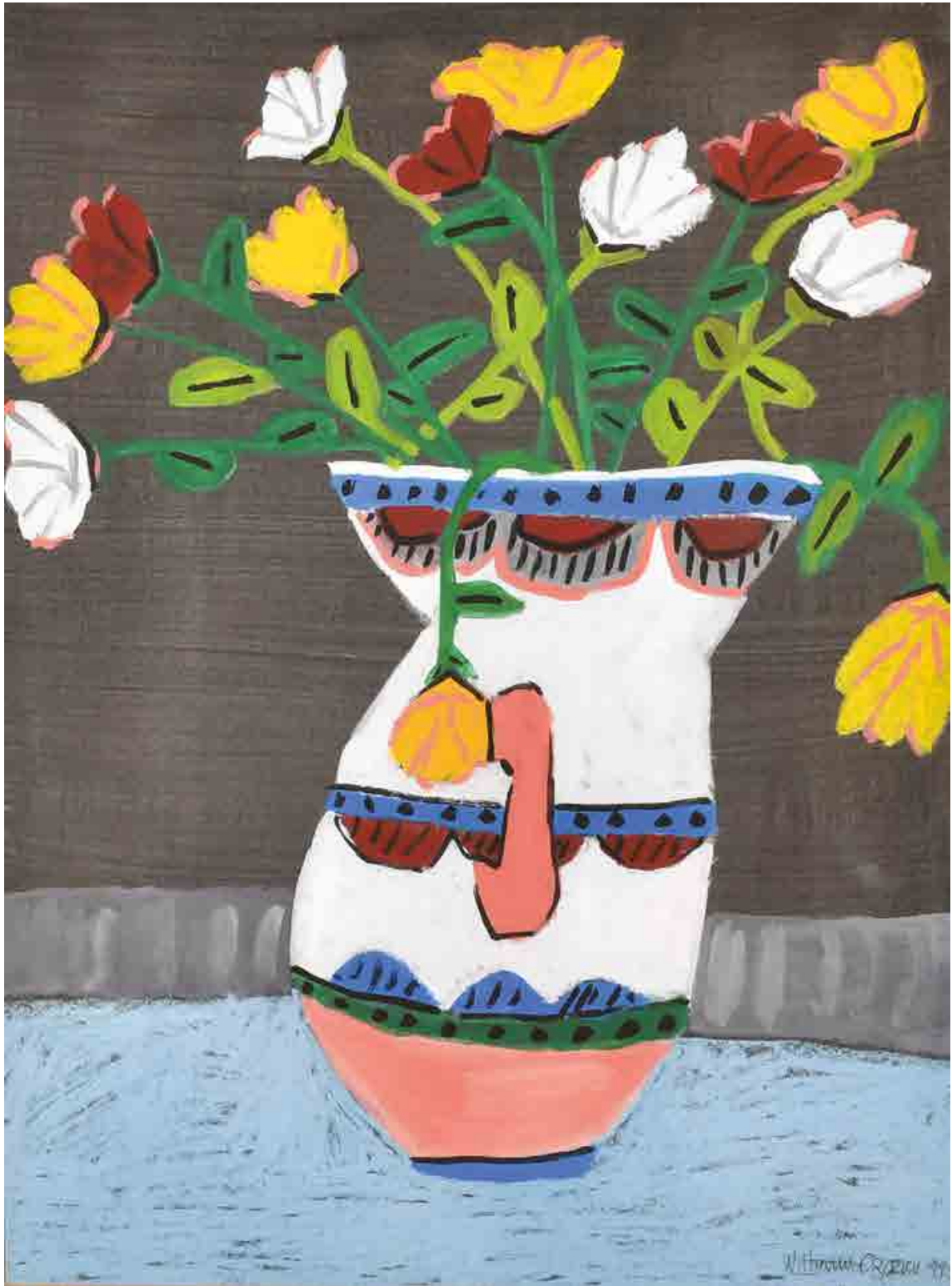
14" x 10.25" (35.5 x 26cm)

The son of Oliver St John Gogarty (author, politician and poet), 'Noll' was painted by Sir William Orpen in 1913

£2000-£3000



202. William F Longstaff (1879-1953) Australian
A Set of Five London Scenes
Watercolour and pencil
Signed in pencil
6.5" x 6.5" (16.5 x 16.5cm) (5)
£300-£500



203. William Crozier (1930-2011) British
 Flowers in a Vase
 Gouache
 Signed and dated 1994 in pencil
 23" x 17.5" (58.4 x 44.4cm)
 £600-£800



204. **Arthur Henry Knighton Hammond (1875-1970) British**
An Artist at an Easel
 Watercolour
 Signed in pencil
 18" x 24" (45.7 x 61cm)
£100-£200



205. **Clayton (20th Century) British**
A Seated Nude
 Signed and dated '85 in pencil
 16" x 18.25" (40.6 x 46.3cm)
£100-£200



206. **Harold Hailstone (1897-1982) British**
"Our next is an all-British number entitled 'Hearts of Oak'"
 Ink
 Signed, and inscribed on the mount
 7" x 10" (17.7 x 25.4cm)
 Illustrated: Punch, November 3, 1937
£100-£200

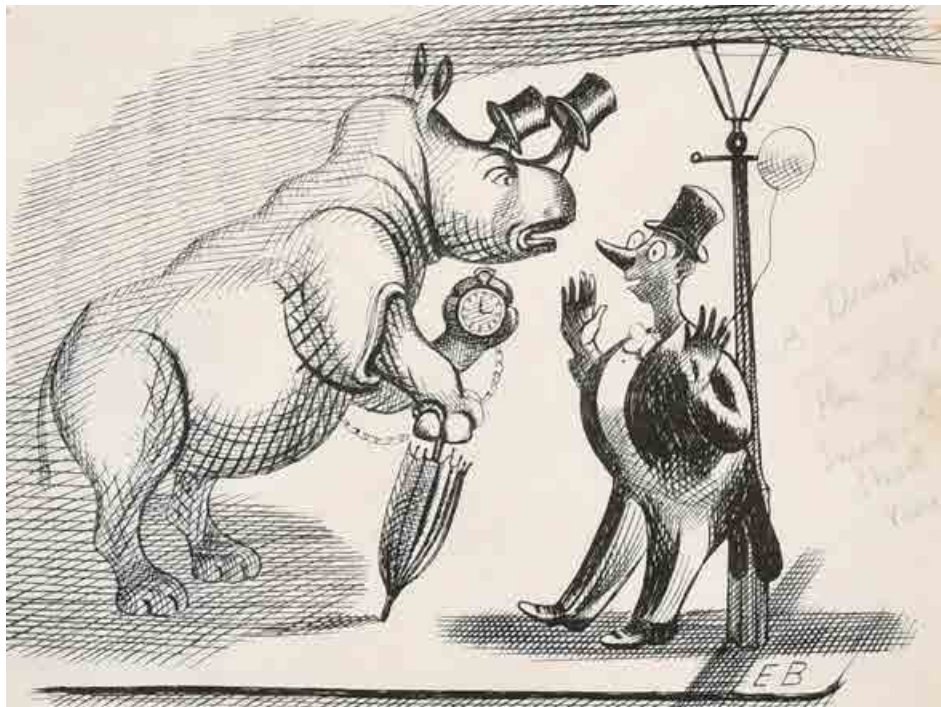


207. **William John Bertram Newcombe (1907-1969) British**
Untitled
 Watercolour and pastel
 Signed and dated '62 in pencil
 14.5" x 22.5" (36.8 x 57.1cm)
£100-£200



208. **David Sawyer (1961-) British**
"Reflective Waters, Grand Canal"
 Watercolour
 Signed
 7.75" x 12.75" (19.7 x 33cm)
£200-£300

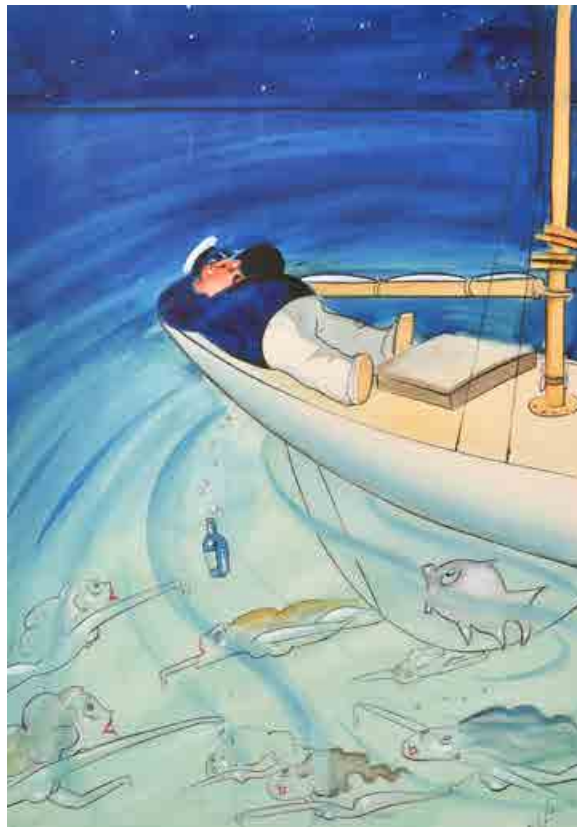
209. Edward Bawden (1903-1989) British
 "A Drunk"
 Ink
 Signed with initials and inscribed in pencil,
 and inscribed on labels verso
 7.5" x 10" (19 x 25.4cm)
 Provenance: The Rae-Smith Gallery
 Note: Original illustration for Shell advertising
 £300-£400



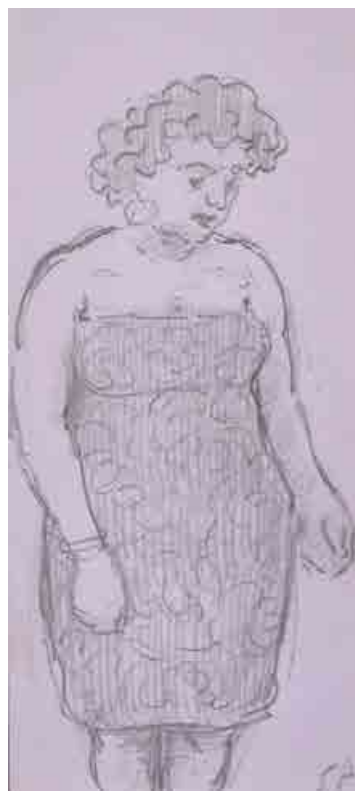
210. Carlos Nadal (1917-1998) Spanish
 "Marche, Bruxelles"
 Watercolour and pencil
 Signed and inscribed
 9" x 12" (22.8 x 30.5cm)
 £500-£700



211. **Edward Sylvester Hynes (1897-1982) Irish**
 "I trust you won't consider this as personal on my part, Sir"
 Ink and wash
 Signed, and inscribed on the mount, and inscribed on a label verso
 14" x 11.75" (35.5 x 29.8cm)
 Provenance: The Rae-Smith Gallery
 £100-£150



212. **Edward Sylvester Hynes (1897-1982) Irish**
 'Journey's End'
 Watercolour and ink
 Signed, and inscribed on a label verso
 13" x 9.25" (33 x 23.5cm)
 Provenance: The Rae-Smith Gallery
 £150-£250



213. **Edward Ardizzone (1900-1979) British**
 'Woman in a Sundress'
 Pencil on coloured paper
 Signed with initials, and inscribed on labels verso
 7.75" x 3.5" (19.7 x 8.9cm)
 Provenance: The Rae-Smith Gallery
 £100-£200



214. Hugh Casson (1910-1999) British

"The Cross, Chichester"

Watercolour and ink

Inscribed, and inscribed on labels verso

13.5" x 9.75" (34.3 x 24.7cm)

And another by the same hand "Garlands, North St., Chichester" (2)

Provenance: Pallant House Gallery

Notes: These are designs for Chichester Cathedral's 900th anniversary celebrations in 1975

£150-£250



215. Mary Fedden (1915-2012) British

"The Cake Shop"

Pencil

Signed and dated 1971, and inscribed on a label verso

26" x 18" (66 x 45.7cm)

£500-£700



216. **Goodridge Roberts (1904-1974) Canadian**
An Inlet
 Oil on board
 Signed
 15" x 17.75" (38.1 x 45.1cm)
£100-£200



218. **Herzog (20th Century) European**
A Shepherd and Flock by a River
 Oil on canvas
 Signed and dated 31
 18.25" x 26.25" (46.3 x 66.7cm)
£100-£200



217. **Donald Wood (1889-1953) British**
A Venetian Canal Scene
 Oil on panel
 Inscribed verso
 Unframed 5.25" x 8" (13.3 x 20.3cm)
 And five others by the same hand (6)
£100-£150



219. **Circle of Charles Henry Harrison Burleigh (1875-1956) British**
"St Anne's Well Gardens"
 Oil on panel
 11" x 14" (27.9 x 35.5cm)
£100-£200

220. **Frederic Yates (1854-1919) British**
'Autumn on the Farm'
 Oil on artist's board
 Signed, Bears inscription on a label
 10" x 14" (25.4 x 35.5cm)
£200-£300

221. **Florencio Vial (19th-20th Century) Chilean**
A Mountainous Landscape
 Oil on canvas
 Signed
 12.5" x 18.5" (31.7 x 47cm)
£200-£300



222. **Circle of Constantin Kousnetzoff (1863-1936) Russian**
A Street Scene
 Oil on board
 Inscribed verso
 10.5" x 13.5" (26.7 x 34.2cm)
£300-£400



223. **Gerald Ackermann (1876-1960) British**
"Herding the Flock, Evening, South Downs"
 Oil on canvas
 Signed, and inscribed on a plaque
 16" x 22" (40.6 x 55.8cm)
£300-£400





224. **Simon Harmon Vedder (1866-1937) American**
Looking out to Sea
Oil on canvas
Signed
21" x 14.75" (53.3 x 37.5cm)
£200-£300



225. **Edwin Harris (1855-1906) British**
Bust Portrait of a Wiggged Gentleman
Oil on panel
Signed
8" x 6" (20.3 x 15.2cm)
Together with a book
Literature: 'Edwin Harris: An Introduction to His Life and Art' by Roger Langley, p.3
£200-£300



226. **Follower of Alexei Alexeievich Harlamoff (1840-1925) Russian**
Portrait of a Young Girl
Oil on panel
Bears a signature
14.25" x 10.75" (36.2 x 27.3cm)
£200-£300



227. **Early 20th Century European School**
An Elegant Lady Holding her Gloves
Oil on canvas laid down
Indistinctly signed
17.75" x 10.75" (45.1 x 27.3cm)
£200-£300

228. Andre Petroff (1893-1975) Russian
 Figures in a Doorway
 Oil on board
 Signed, with a sketch verso
 18" x 13.5" (45.7 x 34.3cm)
 £600-£800



229. Robert Field Procter (1879-1931) New Zealander
 A Street Scene in Florence
 Oil on canvas
 Signed
 19.75" x 12.75" (50.2 x 32.4cm)
 £600-£800



230. **Edward Steel Harper (1878-1951) British**
"Bodvaen Woods"
 Oil on canvas
 Signed and dated 1916, and inscribed on a label verso
 In original arts and crafts frame
 12" x 18" (30.5 x 45.7cm)
£200-£300



231. **Edward Steel Harper (1878-1951) British**
"A Woodland"
 Oil on artist's board
 Signed and dated 1900, and inscribed on a label verso
 13" x 9.5" (33 x 24.2cm)
£150-£250



232. **John Littlejohns (1874-1955) British**
The Silver Connoisseur
 Oil on canvas
 Signed and dated 1943
 25" x 30" (63.5 x 76.2cm)
£200-£300



233. **Edmund Blampied (1886-1966) British**
"The Dunes at Wimereux, Normandy"
 Oil on board
 Signed, inscribed and dated 1934, and inscribed on a label verso
 8" x 11.5" (20.3 x 29.2cm)
 Provenance: Sir Bruce Ingram; The Ruskin Gallery Ltd, Stratford-on-Avon
£400-£600



234. 20th Century English School
 'The Queen's Hotel, Nottingham,
 with Boots Pure, by Arkwright St Station'
 Oil on canvas
 Signed with monogram AG
 24" x 36" (61 x 91.5cm)
 £500-£800



235. Elisee Maclet (1881-1962) French
 Figures in the South of France
 Oil on canvas
 Signed
 23.5" x 28.75" (59.7 x 73cm)
 £800-£1200



236. **Ivan Lindhe (1875-1954) Swedish/American**
Portrait of a Young Girl in a White Bonnet
Oil on canvas
Signed and dated 1920
Oval 23.5" x 18" (59.7 x 45.7cm)
£300-£500



237. **Circle of John Singer Sargent (1856-1925) American**
Portrait of Francois Flameng (Artist, 1856-1923)
Oil on panel
Inscribed on labels verso
10.5" x 8.25" (26.7 x 21cm)
£400-£600



238. **Wilhelm Heinrich Funk (1866-1949) German/American**
Portrait of a Young Girl
Oil on canvas
Signed, inscribed Munchen and dated 1931
Unframed 30" x 25" (76.2 x 63.5cm)
£100-£200



239. Marcel Dyf (1899-1985) French
 'Le Palais de Versailles en Ete'
 Oil on canvas
 Signed
 15" x 18" (38.1 x 45.7cm)
 £3000-£4000



240. **Lionel Rouse (1911-1984) British**
 "Concorde"
 Oil on board
 Signed
 24" x 36" (61 x 91.5cm)
£100-£200



241. **Lucie Grant (20th Century) British**
 "Valley and Trees, Gloucestershire"
 Acrylic
 Inscribed on a label verso
 20" x 24" (50.8 x 61cm)
£100-£150



242. **Franz Albert (19th-20th Century) European**
 "Skaters in a Frozen Landscape"
 Oil on panel
 Signed, and inscribed on a label verso
 11.5" x 15.75" (29.2 x 40cm)
 And a companion piece, a pair (2)
 Provenance: E Stacy-Marks Ltd,
 Eastbourne
£200-£400



243. **Gilbert Adams (1908-1996) British**
 "Boat Shed"
 Oil on board
 Signed with initials, and inscribed on labels verso
 8" x 10" (20.3 x 25.4cm)
 Exhibited: Reading Guild of Artists, together with another by
 the same hand (2)
£100-£150



244. **Gilbert Adams (1908-1996) British**
 "Near Stratford on Avon"
 Oil on canvas laid down
 Signed, and inscribed verso
 10" x 13.5" (25.4 x 34.3cm)
 Together with another work by the same hand
 "Churchyard Hambledon, Bucks" (2)
£100-£200



245. 20th Century English School
A Lady Seated on a Rug
Oil on board
25.75" x 24.75" (65.4 x 62.8cm)
£200-£300



246. Cecil Rochfort D'Oyly John (1906-1993) British
 "Cap d'Antibes, Near Nice, South of France"
 Oil on canvas
 Signed, and inscribed verso
 10" x 14" (25.4 x 35.5cm)
 And the companion piece, a pair (2)
 £800-£1200



247. Edward Seago (1910-1974) British
 "A Stall in the Champs Elysees"
 Oil on board
 Signed, and inscribed verso and on labels verso
 20" x 24" x (50.8 x 61cm)
 Provenance: P & D Colnaghi & Co Ltd, London; The Taylor Gallery, London
 £20000-£30000



248. **Hubert Arthur Finney (1905-1991) British**
 "Near Regents Park"
 Pencil and wash
 Signed (twice) and inscribed in pencil
 12" x 17" (30.5 x 43.2cm)
 £200-£300



249. **Hubert Arthur Finney (1905-1991) British**
 "Barrington, Somerset"
 Oil on board
 Signed, and inscribed verso
 19.25" x 24.25" (49 x 61.5cm)
 £100-£150



250. **Hubert Arthur Finney (1905-1991) British**
 A Winter Garden
 Oil on board
 Signed, and inscribed verso
 23.25" x 18" (59 x 45.7cm)
 £100-£200



251. **Hubert Arthur Finney (1905-1991) British**
 A Street Scene
 Oil on panel
 Inscribed verso
 10.5" x 13.75" (26.7 x 34.8cm)
 £100-£200

252. Alan Reynolds (1926-2014) British
“Bluebell Thicket”

Oil on canvas

Signed, and inscribed on a John Tanous label with title and dated ‘47
20” x 24” (50.8 x 61cm)

£400-£600



253. Charles Debenham (1933-) British
“Beverley Road”

Oil on board

Signed, and inscribed verso and inscribed on a label verso
8” x 10” (20.3 x 25.4cm)

Exhibited: Royal Academy Exhibition, 1982

£400-£600



254. Leon Smets (1895-1980) Belgian
“Antwerpen”

Oil on canvas

Signed, and inscribed on a plaque
31.75” x 36” (80.6 x 91.5cm)

£300-£500





255. Gennady Alexandrovitch Daryine (1922-2012) Russian
 "Pier"
 Oil on board
 Signed in Cyrillic and dated 62, and inscribed verso
 12.75" x 18.5" (32.3 x 47cm)
 £100-£200



256. Serguei Zouiev (1961-) Russian
 "Flight to Egypt", a Surrealist depiction of Mary and Joseph crossing
 the River with Baby Jesus
 Oil on canvas
 Signed in Cyrillic, and signed, inscribed and dated 1990 in Cyrillic verso
 38.5" x 44.5" (97.7 x 113cm)
 £150-£250



257. Viktor Fedorovitch Vassine (1919-1997) Russian
 "At the Stadium"
 Oil on canvas
 Signed in Cyrillic, and signed and inscribed in Cyrillic verso
 31" x 38.5" (78.8 x 97.8cm)
 £150-£250

258. **Konstantin Razumov (1974-) Russian**
 "Young Lady in Pink"
 Oil on canvas
 Signed in Cyrillic, and signed and inscribed in Cyrillic verso
 13" x 9.5" (33 x 24.1cm)
 £1500-£2000



259. **Konstantin Razumov (1974-) Russian**
 "Rendez-Vous at the Evening Cafe"
 Oil on canvas
 Signed in Cyrillic, and signed and inscribed in Cyrillic verso
 13" x 9.5" (33 x 24.1cm)
 £1500-£2000



260. 20th Century Russian School

A Snow Covered Street

Oil on canvas

Signed with motif, and signed, inscribed and dated 1989 verso
35" x 39.25" (89 x 100cm)

£100-£150



262. Kurucz Miklos (20th-21st Century) European

"Negative I"

Oil on canvas laid down

Signed with initials and dated 06, and inscribed verso
19.75" x 23.5" (50.1 x 59.8cm)

£100-£200



264. RIP (20th Century) European

A Mountain Scene

Oil on canvas

Signed with initials and dated '56
Unframed 28.75" x 36" (73 x 91.5cm)

£100-£200



261. Valerie Lednev (1940-) Russian

"Novgorod, Yaroslow Palace" (Yaroslav)

Oil on canvas

Signed, inscribed and dated 1975 in Cyrillic verso, and inscribed on a label verso
19.5" x 32" (49.5 x 81.2cm)

Provenance: Sally Hunter Fine Art, London; Mr M de Martini, September 1990

£100-£200



263. Lucette de la Fougere (1921-2010) French

Blue and White China on a Table

Oil on canvas

Signed

20" x 30" (50.8 x 76.2cm)

£100-£200



265. 20th Century European School

"Black Trees"

Oil on canvas

Signed with initials AD, and inscribed verso
23.5" x 31.75" (59.7 x 80.6cm)

£100-£200



266. Pierre de Clausade (1910-1975) French
"Nuages Sur La Loire"
Oil on canvas
Signed, and inscribed and dated 5.VII.71 verso
23.25" x 36" (59 x 91.5cm)
£1000-£2000



267. **Lionel Rouse (1911-1984) British**
 'Talbot Lago T26C Grand Prix Car'
 Oil on board
 Signed
 24" x 36" (61 x 91.5cm)
 And two others by the same hand of
 Mercedes and Delage Grand Prix cars (3)
 £150-£250

268. Suzanne Eisendieck
(1906-1998) Polish/German
"Bateaux à Fécamp"
Oil on canvas
Signed, and inscribed verso
Unframed 18" x 21.5" (45.7 x 54.6cm)
£300-£400



269. Suzanne Eisendieck
(1908-1998) Polish/German
"Cafe by the Water"
Oil on canvas
Signed
15" x 18" (38.1 x 45.7cm)
£300-£400



270. 20th Century Far Eastern School
A Landscape
Batik
45" x 32" (114.3 x 81.2cm)
£100-£200



271. 20th Century English School
Spring Flowers in a Teapot
Oil on board
12" x 10" (30.5 x 25.4cm)
Provenance: Sherwood Forest Fine Arts
£100-£200



272. 20th Century European School
Abstract
Oil on canvas
Inscribed with initials EO
23.5" x 20.25" (59.7 x 51.4cm)
£100-£200



273. 20th-21st Century Indian School
Portrait of Hari Singh Nalwa (1791-1837)
Oil on canvas
Unframed 60" x 42" (152.4 x 106.7cm)
£100-£200



274. Neil B Helyard (1951-) British
"Jostling"
Oil on paper
Signed
21.5" x 21.25" (54.6 x 54cm)
£100-£200



275. Evelyn Ortleib (1925-2008) French
"Strates"
Mixed media
Signed, and inscribed on a label verso
45.5" x 34.5" (115.6 x 87.7cm)
Provenance: Anthony Dawson, 1965; Mr D Blaber
£100-£200



276. Mark Spain (1962-) British
 "Dragging Cape"
 Oil on canvas
 Signed, and inscribed on a label verso
 48.5" x 60.25" (123.1 x 153cm)
 £300-£500

277. **Raphael Andreevich Didenko (1927-) Russian**
 “Sunny Day”
 Oil on canvas
 Signed in Cyrillic and dated ‘52, and signed and
 inscribed in Cyrillic verso
 37” x 28” (94 x 71cm)
 £100-£200



278. **Boris Mikhailovitch Lavrenko (1920-2011) Russian**
 “At the Port”
 Oil on board
 Signed in Cyrillic and dated ‘59, and inscribed verso
 12.75” x 17” (32.3 x 43.2cm)
 £150-£200



279. **Boris Mikhailovitch Lavrenko (1920-2011) Russian**
 “Small Pier by the Black Sea”
 Oil on board
 Signed in Cyrillic and dated 61, and inscribed verso
 13.5” x 19.25” (34.2 x 48.8cm)
 £150-£200



280. **Konstantin Razumov (1974-) Russian**
 "Nude On The Sunny Veranda"
 Oil on canvas
 Signed in Cyrillic, and signed and inscribed in Cyrillic verso
 13.75" x 8.5" (35 x 21.6cm)
 £1800-£2400



281. Circle of Kenzo Okada (1902-1982) Japanese/American
 "Abstract"
 Oil on canvas
 Bears a signature
 26" x 26" (66 x 66cm)
 £200-£300



282. After Ram Kumar (1924-2018) Indian
 Study of Three Figures
 Oil on canvas
 Unframed 51.25" x 39.5" (130 x 100cm)
 £100-£150



283. Circle of Philip Wilson Steer (1860-1942) British
 "Head of a Girl"
 Oil on canvas
 Bears an inscription from Redfern Gallery on a label verso
 15.5" x 12" (39.3 x 30.5cm)
 £200-£300



284. Joan Griswold (1954-) British
 "Thirsty"
 Oil on canvas
 Signed with initials, and inscribed verso
 24" x 20" (61 x 50.8cm)
 £200-£300



285. **Yuan Hao (1941-)** Chinese
Portrait of an Oriental Lady
Oil on canvas
Inscribed verso
28.5" x 23.75" (72.3 x 60.3cm)
£300-£500



286. **Noel George Ellis (1917-1988)** British
"Billingsgate"
Oil on board
Signed, and inscribed on labels verso
21.75" x 15" (55.3 x 38.1cm)
£400-£600



287. **Jane Lewis (1953-)** British
"Child with Bird"
Oil on canvas laid down
Inscribed (on rim) and inscribed verso
Circular 15.75" x 15.75" (40 x 40cm)
£200-£300



288. **Clifford Fishwick (1923-1997)** British
Abstract Landscape
Oil on board
With artist's stamp verso
23" x 19" (58.4 x 48.2cm)
£200-£300



289. Alan Furneaux (1953-) British
Street Scene
Acrylic on board
Signed
11" x 14" (27.9 x 35.5cm)
£200-£300



290. Alan Furneaux (1953-) British
Street Scene
Oil on canvas
Signed
12" x 16" (30.5 x 40.6cm)
£200-£300

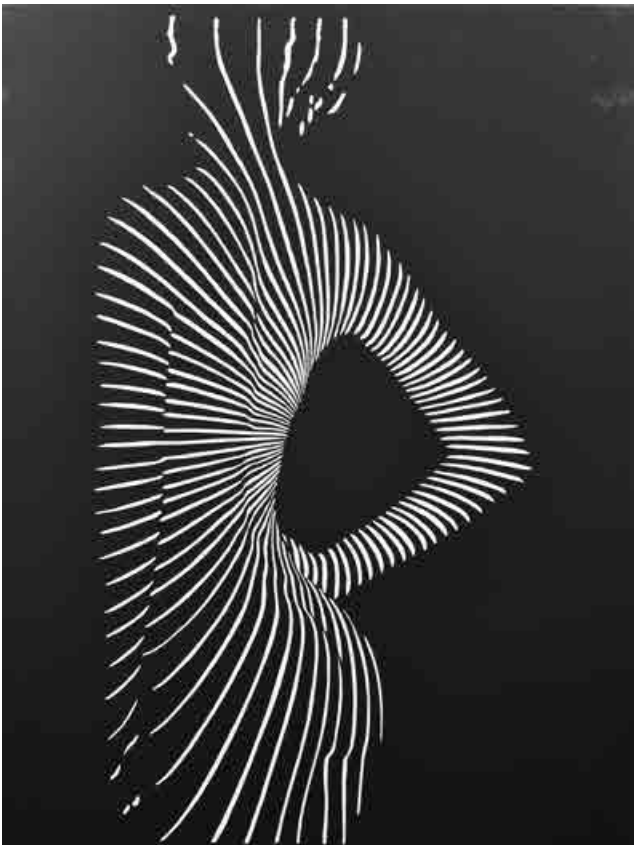


291. G Campbell (20th Century) British
A Tropical Coastal Scene
Oil on canvas
Signed
20.5" x 27" (52.1 x 68.6cm)
£300-£500

292. Igor Talwinski (1907-1983) Polish. Nude
Oil on canvas
Signed
22" x 18" (55.8 x 45.7cm)
£400-£600



293. Igor Talwinski (1907-1983) Polish
"Jeunesse, Assise"
Oil on canvas
Signed, and inscribed on a label verso
21.5" x 18" (54.6 x 45.7cm)
£400-£600



294. Ann Generich (20th-21st Century) German/British
 A Set of Three 'La Femme Nue'
 Acrylic on canvas
 Unframed 48" x 36" (122 x 91.5cm) (3)
 £100-£200

295. **Henry Raeburn Dobson (1901-1985) British**
 Portrait of a Lady
 Oil on canvas
 Signed
 30" x 25" (76.2 x 63.5cm)
£300-£500



296. **David Dipnall (1941-2023) British**
 "Chalk Country, The Downs"
 Oil on canvas
 Signed, and inscribed in pencil verso
 24" x 48" (61 x 122cm)
£200-£300



297. **Lucian Frits Ohl (1904-1976) Indonesian**
 'Flamboyant Tree'
 Oil on canvas
 Signed
 24" x 36" (61 x 91.5cm)
£150-£250



298. **Barry John (20th-21st Century) British**
"Piccadilly Circus"
 Spray paint over a print base
 Signed
 Extensively inscribed
 Unframed 67" x 43.25" (170.2 x 109.8cm)
 Together with a book about the artist
£100-£200



299. **Barry John**
(20th-21st Century) British
"The Moulin Rouge"
 Spray paint over print base
 Inscribed
 35.5" x 35.5" (90 x 90cm)
 And the companion piece
 "Confetti", a pair (2)
£200-£400



300. **Pure Evil (1968-)** British
"Roger Vadim's Nightmare (Brigitte Bardot)"
Silkscreen
Signed, inscribed, dated 2012 and numbered 1/5
Unframed 39.25" x 39.25" (99.7 x 99.7cm)
£200-£300

Frames



301. 20th Century English School
A Painted Composition Frame, rebate 72" x 44"
(182.9 x 111.8cm)
£200-£400



302. 20th Century English School
A Black Painted Frame, with a gilt slip, rebate 62.75" x 41"
(159.4 x 104.1cm)
£90-£120



303. 20th Century English School
 A Gilt Composition Frame, with swept centres and corners, rebate 60" x 40"
 (152.4 x 101.6cm)
£100-£200



304. 21st Century English School
 A Painted Frame, with gilt inner and outer edges, rebate 60" x 40"
 (152.4 x 101.6cm)
£100-£200



305. 20th Century English School
 A Gilt Composition Frame, rebate 59" x 39" (149.8 x 99.1cm)
£80-£120



306. 21st Century English School
 A Pair of Black Painted Frames, with inset glass, rebate 57" x 43.75"
 (145 x 111cm) (2)
£50-£80



307. 20th Century European School
A Carved Giltwood Frame, with a painted plate, rebate 53" x 47.5" (134.6 x 120.7cm)
£500-£700



308. 20th Century English School
A Black Painted Frame, rebate 51" x 38.5" (129.5 x 99.8cm)
£30-£50



309. 20th Century English School
A Gilt Composition Frame, with black painted panels, rebate 50" x 39" (127 x 99.1cm)
£80-£120



310. 20th Century European School
A Black Painted Frame, with a gilt inner edge, rebate 49.5" x 40" (125.7 x 101.6cm)
£50-£80



311. 19th Century European School
A Painted Composition Frame, rebate 48.5" x 29" (123.2 x 73.7cm)
£80-£120



312. 20th Century European School
A Black Painted Frame (in sections), with a gilt inner and outer edges,
rebate 47.5" x 32" (120.7 x 81.2cm)
£30-£40



313. 21st Century English School
A Painted Composition frame, rebate 45.5" x 29.5" (115.6 x 74.9cm)
£100-£200



314. 21st Century English School
A Near Set of Four Black Painted Frames, with inset glass, rebate 43.75" x 34"
(111.1 x 86.4cm) (one with broken glass) (4)
£100-£200



315. 21st Century English School
A Set of Four Black Painted Frames, with inset glass, rebate 43.75" x 34"
(111.1 x 86.4cm) (4)
£100-£200



316. 20th Century French School
A Painted Composition Frame, rebate 43.5" x 35.5" (110.5 x 90.2cm)
£70-£100



317. Early 20th Century English School
A Gilt and Painted Carved Wood Frame, with swept and pierced centres and corners, rebate 43.5" x 23.5" (110.4 x 59.7cm)
£50-£80



318. 20th Century European School
A Gilt Composition Frame, rebate 42.5" x 30.75" (107.9 x 78.1cm)
£80-£120



319. 20th Century European School
A Painted Wooden Frame, rebate 42.25" x 24" (107.3 x 61cm)
£30-£50



320. 20th Century European School
A Wooden Frame, with a gilt outer edge and a fabric slip, rebate 40" x 28" (101.7 x 71.1cm)
£40-£60



321. 20th Century English School
A Gilt Composition Frame, with swept centres and corners rebate 40" x 22" (101.6 x 55.8cm)
£50-£80



322. 21st Century English School

A Gilt Composition Frame, with a fabric slip, rebate 39.5" x 31.75"
(100.3 x 80.6cm), without slip, rebate 41" x 33.25" (104.2 x 84.4cm)
£100-£200



323. 20th Century European School

A Gilt Composition Frame, rebate 39.5" x 31.5" (100.3 x 80cm)
£80-£120



324. 20th Century European School

A Gilt Composition Frame, rebate 39.5" x 31.5" (100.3 x 80cm)
£80-£120



325. 21st Century English School

A Gilt Composition Frame, with a fabric slip, rebate 39.5" x 30"
(100.3 x 76.2cm), without slip rebate 40.5" x 31.25" (102.9 x 79.3cm)
£100-£200



326. 20th Century European School
A Black Composite Frame, with a gilt inner edge, rebate 39.5" x 27.5"
(100.3 x 69.8cm)
£50-£80



327. 20th Century European School
A Gilt and Painted Frame, rebate 38.75" x 32.75" (98.4 x 83.2cm)
£80-£120



328. 20th Century European School
A Painted Composition Frame, with swept centres and corners, and a white slip, rebate 37.75" x 31.25" (95.3 x 79.4cm), without slip, rebate 39" x 32.5"
(99.1 x 82.5cm)
£60-£80



329. 20th Century European School
A Gilt Composition Frame, rebate 37.5" x 27.75" (95.3 x 70.6cm)
£80-£120



330. Late 18th Century English School
A Painted Carved Wood Frame, rebate 37.25" x 18" (94.6 x 45.7cm)
£100-£150



331. Early 19th Century European School
A Painted Composition Frame, with swept centres and corners, rebate 36" x 28" (91.4 x 71.1cm)
£60-£80



332. 20th Century English School
A Gilt Composition Frame, with swept centres and corners and a white slip, rebate 36" x 28" (91.5 x 71.1cm), without slip 37.75" x 30.25" (95.8 x 76.8cm)
£70-£100



333. 20th Century English School
A Gilt Composition Frame, rebate 36" x 24" (91.5 x 61cm)
£50-£80



334. 20th Century English School
A Gilt Composition Frame, with swept and pierced centres and corners,
rebate 36" x 24" (91.5 x 61cm)
£60-£80



335. 21st Century English School
A Gilt Composition Frame, rebate 36" x 24" (91.5 x 61cm)
£80-£120



336. 20th Century English School
A Black Painted Frame, with a gilt outer edge and a gilt slip,
rebate 36" x 22.25" (91.5 x 56.5cm)
£80-£120



337. 21st Century English School
A Silver Painted Frame, rebate 35.5" x 31.5" (90.2 x 80cm)
£30-£50



338. 19th Century French School

A Louis Style Carved Giltwood Frame, with swept centres and corners, rebate 35.5" x 26.25" (90.2 x 66.7cm)

£400-£600



339. 20th Century English School
An Inlaid Wooden Frame, rebate 33.5" x 21.75" (85.1 x 55.3cm)
£100-£200



340. 21st Century English School
A Gilt Composition Frame, with swept and pierced corners and a fabric slip, rebate 32" x 25.5" (81.3 x 64.7cm), without slip, rebate 34" x 27.5" (86.3 x 69.8cm)
£80-£120



341. 21st Century English School
A Gilt Composition Frame, with swept and pierced centres and corners, rebate 32" x 25.5" (81.2 x 64.7cm)
£100-£200



342. 20th Century English School
A Gilt Composition Frame, with swept centres and corners, rebate 32" x 21.5" (81.3 x 54.6cm)
£60-£80



343. 20th Century English School
A Gilt Composition Frame, with swept centres and corners,
rebate 30.25" x 20" (76.8 x 50.8cm)
£80-£120



344. 19th Century English School
A Pair of Gilt Composition Frames, with swept corners, rebate 30" x 25"
(76.2 x 63.5cm) (2)
£200-£300



345. 20th Century English School
A Carved Giltwood Frame, rebate 30" x 25.5" (76.2 x 64.7cm)
£100-£200



346. 20th Century English School
A Gilt Composition Frame, with swept centres and corners, rebate 30" x 25"
(76.2 x 63.5cm)
£50-£80



347. 21st Century English School
A Black Painted Frame, rebate 30" x 24" (76.2 x 61cm) and another similar (2)
£20-£30



348. 21st Century English School
A Gilt Composition Frame, with a white slip, rebate 30" x 22"
(76.2 x 55.8cm)
£60-£80



349. 19th Century English School
A Gilt Composition Frame, with swept centres and corners, rebate 30" x 20" (76.2 x 50.8cm)
£80-£120



350. 19th Century English School
A Gilt Composition Frame, with swept and pierced centres and corners, rebate 30" x 20" (76.2 x 50.8cm)
£100-£200



351. 19th Century English School
A Gilt Composition Watts Frame, with inset glass, 30" x 20" rebate (76.2 x 50.8cm)
£200-£300



352. 20th Century English School
A Watts Style Gilt Composition Frame, rebate 30" x 20" (76.2 x 50.8cm)
£100-£200



353. 20th Century English School
A Painted Composition Frame, with swept centres and corners,
rebate 30" x 18" (76.2 x 45.7cm)
£40-£60



354. 19th Century European School
A Painted Composition Frame, with swept centres and corners,
rebate 29" x 25" (73.7 x 63.5cm)
£40-£60



355. 20th Century English School
A Gilt Composition Frame, with swept and pierced centres and corners,
and a fabric slip, rebate 29" x 23.75" (73.7 x 60.3cm), without slip,
rebate 30.75" x 25.5" (78.1 x 64.7cm)
£100-£200



356. 21st Century English School
A Gilt Composition Frame, with swept centres and corners with a white
slip with gilt inner edges, rebate 29" x 23.75" (73.7 x 60.3cm), without
slip rebate 30.5" x 25.5" (77.5 x 64.7cm)
£80-£120



357. 19th Century European School
A Painted Composition Frame, rebate 29" x 21.5" (73.7 x 54.6cm)
£40-£60



358. 19th Century Italian School
A Carved Giltwood Florentine Frame, with inset mirror glass,
rebate 29" x 20.75" (73.7 x 52.7cm)
£200-£400



359. 19th Century European School
A Painted Composition Frame, rebate 28.75" x 23.75" (73 x 60.3cm)
£30-£40



360. 19th Century English School
A Maple Frame, rebate 28.5" x 20.75" (72.4 x 52.7cm)
£50-£80



361. 19th Century English School
A Pair of Gilt Composition Frames, rebate 28.5" x 19.25"
(72.3 x 48.9cm)
£100-£150



362. 19th Century English School
A Gilt Inner Frame, rebate 27.5" x 23" (69.9 x 58.4cm)
£30-£50



363. 19th Century English School
A Painted Frame, with a gilt slip, rebate 27.5" x 21.5" (69.8 x 54.6cm)
£60-£80



364. 20th Century English School
A Painted Composition Frame, with swept and pierced centres and corners, rebate 27" x 19" (68.6 x 48.2cm)
£30-£40



365. 20th Century English School
A Painted Composition Frame, with swept corners, rebate 27" x 18"
(68.6 x 45.7cm)
£40-£60



366. 19th Century English School
A Painted Frame, with a gilt slip, rebate 26.75" x 21" (67.9 x 53.3cm)
£60-£80



367. 20th Century English School
A Gilt Composition Frame, with swept and pierced centres and corners, rebate 26.25" x 15" (66.6 x 38.1cm)
£30-£50



368. 21st Century English School
A Black Painted Frame, with a gilt outer edge, rebate 26" x 26" (66 x 66cm)
£40-£60



369. 20th-21st Century English School
A Gilt Composition Frame, with swept and pierced centres and corners, rebate 26" x 24" (66 x 61cm)
£60-£80



370. 19th Century European School
A Gilt Composition Frame, with swept centres and corners, rebate 26" x 21.5" (66 x 54.6cm)
£100-£200



371. 21st Century European School
A Gilt Composition Frame, with a white slip, rebate 26" x 21.5" (66 x 54.6cm)
£50-£80

372. 20th Century European School
A Gilt Composition Frame, with swept corners,
rebate 26" x 20" (66 x 50.8cm)
£100-£200



373. 20th Century English School
An Ornate Carved Giltwood Frame, with inset mirror
glass, rebate 25.75" x 18" (65.4 x 45.7cm),
Overall 51.5" x 35" (130.8 x 88.9cm)
£200-£400



374. 20th Century English School
A Gilt Composition Frame, with a fabric slip, rebate 25.5" x 21.25"
(64.7 x 54cm)
£30-£50



375. 21st Century European School
A Gilt Composition Frame, rebate 25.5" x 19.75" (64.7 x 50.2cm)
£100-£200



376. Early 20th Century French School
A Painted Frame, rebate 25.25" x 21" (64.1 x 53.3cm)
£40-£60



377. 19th Century English School
A Ribbed Composition Frame, rebate 25.25" x 19.75" (64.2 x 50.2cm)
£100-£200



378. 20th Century English School
A Simulated Wooden Frame, with a gilt slip and inset glass,
rebate 24" x 20.25" (61 x 51.4cm)
£40-£60



379. 19th Century English School
A Painted Composition Frame, rebate 24" x 20" (61 x 50.8cm)
£60-£80



380. 20th Century English School
A Painted Composition Frame rebate 24" x 20" (61 x 50.8cm)
£30-£50



381. 20th Century English School
A Gilt Composition Frame, with a fabric slip, rebate 24" x 20"
(61 x 50.8cm), without slip, rebate 25.5" x 22" (64.7 x 55.8cm)
£80-£120



382. 21st Century English School
A Gilt Composition Frame, with swept centres and corners and
a fabric slip, rebate 24" x 20" (61 x 50.8cm), without slip,
rebate 25.75" x 21.75" (65.4 x 55.2cm)
£80-£120



383. 21st Century English School
A Black Painted Frame, with gilt inner and outer edges,
rebate 24" x 20" (61 x 50.8cm)
£100-£200



384. 20th Century English School
A Gilt Composition Frame, rebate 24" x 19" (61 x 48.2cm)
£80-£120



385. 19th Century English School
A Gilt Composition Frame, with swept centres and corners, Arched, rebate 24" x 18" (61 x 45.7cm)
£30-£50



386. 20th Century English School
A Pair of Gilt Composition Frames, with swept and pierced corners, rebate 24" x 14" (61 x 35.5cm) (2)
£60-£80



387. 20th Century English School
A Painted Composition Frame, with swept and pierced centres and corners, rebate 23.75" x 19.5" (60.3 x 49.5cm)
£30-£40



388. 19th Century Chinese School
A Pair of Carved Wood Frames, rebate 23.75" x 15.5" (60.3 x 39.4cm) (2)
£100-£200



389. Late 18th Century English School
A Black Frame, with a gilt slip, rebate 23.5" x 19.25" (59.7 x 48.8cm)
£80-£120



390. 19th Century English School
A Painted Composition Frame, rebate 23.5" x 17.5" (59.7 x 44.4cm)
£30-£50



391. 20th Century English School
A Wood and Fabric Frame, rebate 23" x 19.75" (58.4 x 50.2cm)
£30-£50



392. 21st Century English School
A Painted Frame, rebate 22.75" x 19" (57.8 x 48.2cm)
£30-£50



393. 20th Century English School
A Gilt Composition Frame, with swept centres and corners, rebate 22.75" x 18.75" (57.7 x 47.6cm)
£30-£50



394. 20th Century European School
A Gilt and Black Painted Frame, rebate 22.75" x 18.5" (57.8 x 47cm)
£80-£120



395. Late 19th Century English School
A Wooden Frame, rebate 22.75" x 13" (57.8 x 33cm)
£40-£60



396. 19th Century English School
A Black Frame, with a gilt slip, rebate 22.5" x 18.5" (57.2 x 47cm)
£60-£80



397. 19th Century English School
A Maple Frame, with a gilt slip, rebate 22.25" x 18" (56.5 x 45.7cm)
£40-£60



398. 21st Century English School
A Gilt Composition Frame, with a fabric slip, rebate 22" x 18.25" (55.8 x 46.3cm), without slip, rebate 23" x 19.25" (58.4 x 48.8cm)
£80-£120



399. 20th Century English School
A Gilt Composition Frame, with swept and pierced centres and corners, rebate 22" x 18" (55.9 x 45.7cm)
£60-£80



400. 19th Century English School
A Maple Frame, with a gilt inner edge, rebate 22" x 16" (55.8 x 40.6cm)
£40-£60



401. 20th Century European School
A Gilt Composition Frame, rebate 21.75" x 18.25" (55.2 x 46.4cm)
£60-£80



402. 20th Century English School
A Black Painted Ribbed Frame, rebate 21.75" x 18.25"
(55.2 x 46.3cm)
£80-£120



403. 21st Century English School
A Gilt Composition Frame, with swept and pierced corners
and a white slip, rebate 21.75" x 14.25" (55.3 x 36.1cm)
£80-£120



404. 19th Century English School
A Painted Composition Hollow Frame, rebate 21.5" x 18.75"
(54.6 x 47.6cm)
£50-£80



405. 19th Century English School
A Maple Frame, with a gilt slip, rebate 21.5" x 17.5"
(54.6 x 44.4cm)
£40-£60



406. 20th Century English School
A Painted Wooden Frame, with inset glass, rebate 21.5" x 16.75"
(54.6 x 42.6cm)
£30-£50



407. 20th Century English School
A Gilt Composition Frame, rebate 21.5" x 15" (54.6 x 38.1cm)
£60-£80



408. 20th Century English School
A Black Painted Frame, rebate 21" x 17" (53.3 x 43.2cm)
£60-£80



409. Late 18th Century English School
A Darkwood Frame, with gilt inner and outer edges, rebate 20.5" x 17.25"
(52.1 x 43.8cm)
£50-£80



410. 10th Century English School
A Pair of Silver Composition Frames, rebate 20.5" x 14.75" (52.1 x 37.5cm) (2)
£60-£80



411. 20th Century English School
A Gilt Composition Frame, with swept and pierced corners, and inset glass, rebate 20.25" x 13.75" (51.4 x 34.9cm)
£80-£120



412. Early 20th Century English School
A Carved Giltwood Frame, rebate 20" x 16" (50.8 x 40.6cm)
£100-£200



413. 20th Century English School
A Painted Frame, with gilt inner edge, rebate 20" x 16" (50.8 x 40.6cm)
£30-£50



414. 19th Century English School
A Wooden Frame, with a gilt slip, rebate 20" x 15.75" (50.8 x 40cm)
together with A Wooden Frame, with a black inner edge,
rebate 18.25" x 13.25" (46.4 x 33.6cm) (2)
£60-£80



415. 19th Century English School
A Gilt Composition Frame, rebate 19.75" x 16.75" (50.2 x 42.6cm)
£40-£60



416. 20th Century English School
A Gilt Composition Frame, rebate 19.75" x 15" (50.2 x 38.1cm)
£40-£60



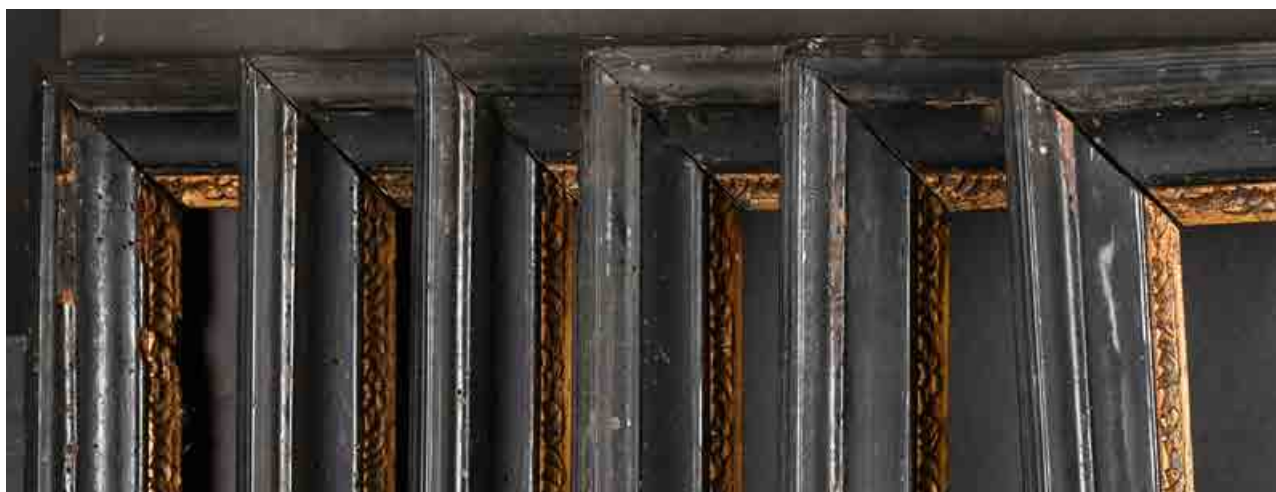
417. 19th Century English School
A Reverse Wooden Frame, with a gilt outer edge and a black inner edge,
rebate 19.25" x 17" (48.8 x 43.2cm)
£40-£60



418. 19th Century English School
A Maple Frame, with a gilt slip, rebate 19.25" x 14.75" (48.8 x 37.5cm)
£50-£80



419. 19th Century English School
A Gilt Composition Frame, rebate 19" x 16.75" (48.2 x 42.5cm)
£50-£80



420. 18th Century English School

A Set of Six Darkwood Frames, with gilt inner edges, rebate 19" x 16.25" (48.2 x 41.3cm) (6)

£300-£400



421. 19th Century English School
A Gilt Composition Frame, rebate 19" x 14.5" (48.2 x 36.8cm)
£50-£80



422. 19th Century English School
A Cushioned Darkwood Frame, with a gilt slip, rebate 19" x 14.25"
(48.2 x 36.2cm)
£50-£80



423. 21st Century English School
A Gilt Composition Frame, with a white inner edge,
rebate 18.5" x 15" (47 x 38.1cm)
£80-£120



424. 20th Century English School
A Painted Composition Frame, with gilt inner and outer edges,
rebate 18.5" x 14.5" (47 x 36.8cm)
£40-£60



425. 20th Century European School
A Gilt and Painted Composition Frame, with swept centres and
corners, rebate 18.5" x 14" (47 x 35.5cm)
£70-£100



426. Late 18th Century English School
A Darkwood Frame, rebate 18.5" x 13" (47 x 33cm)
£60-£80



427. 19th Century English School
A Gilt Composition Frame, rebate 18.5" x 12.25" (47 x 31.1cm)
£40-£60



428. 21st Century English School
A Painted Composition Frame, with a white slip, rebate 18.25" x 15.25" (46.3 x 38.7cm), without slip rebate 19.25" x 16.25" (48.8 x 41.3cm)
£80-£120



429. Late 18th Century English School
A Darkwood Frame, with gilt inner and outer edges, rebate 18.25" x 14.5" (46.3 x 36.8cm)
£60-£80



430. 21st Century English School
A Gilt Composition Frame, with swept corners and a fabric slip, rebate 18.25" x 14" (46.3 x 35.5cm), without slip rebate 19.75" x 15.75" (50.2 x 40cm)
£70-£100



431. 20th Century English School
A Gilt Composition Frame, with swept centres and corners, rebate 18.25" x 13" (46.4 x 33cm)
£30-£50



432. 19th Century European School
A Gilt Composition Frame, with swept and pierced centres and corners, rebate 18" x 15" (45.7 x 38.1cm)
£80-£120



433. 20th Century European School
A Painted Frame, with a fabric slip, rebate 18" x 15" (45.7 x 38.1cm)
£30-£50



434. 20th Century European School
A Painted Composition Frame, with swept and pierced centres and corners and a fabric slip, rebate 18" x 14.25" (45.7 x 36.1cm), without slip, rebate 19" x 15" (48.2 x 38.1cm)
£70-£100



435. 20th Century French School
A Painted Frame, rebate 18" x 14" (45.7 x 35.5cm)
£60-£80



436. 20th Century European School
A Painted Carved Wood Frame, rebate 18" x 13.75" (45.7 x 34.9cm)
£50-£80



437. 19th Century English School
A Hogarth Style Frame, rebate 17.5" x 14.5" (44.4 x 36.8cm)
£40-£60



438. 19th Century English School
A Pair of Maple Frames, with gilt slips, rebate 17" x 13" (43.2 x 33cm) (2)
£70-£100



439. 20th Century French School

A Gilt Composition Frame, with swept and pierced centres and corners, rebate 17" x 12.5" (43.2 x 31.7cm)
£50-£80



440. 20th Century English School

A Wooden Frame, with a gilt slip, rebate 16.75" x 14" (42.6 x 35.5cm) and another wooden frame, rebate 17" x 11.25" (43.2 x 28.6cm) (2)
£30-£50



441. 19th Century English School

A Gilt Composition Frame, rebate 16.5" x 14" (41.8 x 35.5cm)
£30-£50



442. Late 18th Century English School

A Darkwood Frame, rebate 16.5" x 12.25" (41.8 x 31.1cm)
£50-£80



443. 20th Century Dutch School

A Black Painted Frame, with a gilt slip, rebate 16.25" x 11.75" (41.3 x 29.8cm)
£50-£80



444. 21st Century English School

A Gilt Composition Frame, with a fabric slip, rebate 16" x 13" (40.6 x 33cm), without slip, rebate 17" x 14" (43.2 x 35.5cm)
£50-£80



445. 21st Century English School
A Gilt Composition Frame, with a fabric slip, rebate 16" x 12.75"
(40.6 x 32.4cm), without slip, rebate 17" x 13.75" (43.2 x 34.9cm)
£40-£60



446. Late 19th Century English School
A Silver Composition Frame, rebate 16" x 12.25" (40.6 x 31.1cm)
£70-£100



447. 20th Century European School
A Painted Composition Frame, with swept and pierced corners,
rebate 16" x 12" (40.6 x 30.5cm)
£40-£60



448. 21st Century English School
A Gilt Composition Frame, with a fabric slip, rebate 16" x 12"
(40.6 x 30.5cm)
£60-£80



449. 20th Century English School
A Set of Three Wooden Cross Corner Frames, rebate 15.75" x 12.5"
(40 x 32.3cm) (one with mirror glass) (3)
£40-£60



450. 21st Century European School
A Black Painted Frame, with a gilt outer edge and a white inner edge,
rebate 15.75" x 10.25" (40 x 26cm)
£40-£60



451. 20th Century European School
A Carved Giltwood Frame, with inset convex mirror glass, Circular,
rebate 15.5" x 15.5" (39.3 x 39.3cm)
£100-£200



452. 19th Century English School
A Darkwood Frame, with a later gilt slip, rebate 15.25" x 9.75" (38.7 x 24.8cm)
£50-£80



453. 19th Century English School
A Maple Frame, rebate 14.75" x 11.25" (37.4 x 28.6cm)
£50-£80



454. Late 18th Century English School
A Painted Carved Wood Frame, rebate 14.75" x 10.25" (37.5 x 26cm)
£80-£120



455. Late 18th Century English School
A Painted Carved Wood Inner Frame, rebate 14.5" x 10.5"
(36.8 x 26.7cm)
£40-£60



456. 19th Century English School
A Pair of Gilt Composition Frames, rebate 14.5" x 10.5"
(36.8 x 26.7cm) (2)
£50-£80



457. 19th Century English School
A Wooden Frame, rebate 14.25" x 12" (36.2 x 30.5cm)
£40-£60



458. 19th Century English School
A Maple Frame, with a gilt slip, rebate 14.25" x 11" (36.2 x 27.9cm)
£40-£60



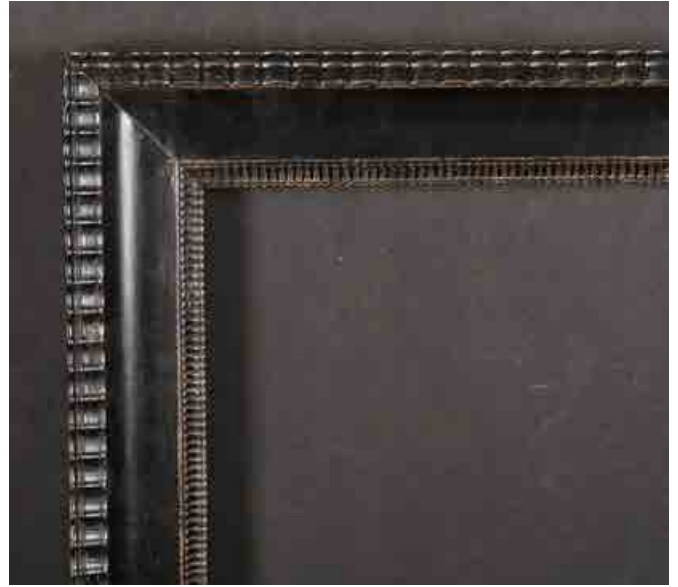
459. 18th Century English School
A Darkwood Frame, rebate 14.25" x 10.75" (36.2 x 27.3cm)
£40-£60



460. 19th Century English School
A Pair of Wood and Gilt Slips, rebate 14.25" x 10.5" (36.2 x 26.7cm) (2)
£30-£50



461. 19th Century English School
A Wooden Frame, rebate 14" x 11.5" (35.5 x 29.3cm)
£30-£50



462. 20th Century English School
A Darkwood Frame, rebate 14" x 11" (35.5 x 28cm)
£100-£200



463. 19th Century English School
A Maple Frame, with a gilt slip, rebate 14" x 9.25" (35.5 x 23.5cm)
£40-£60



464. 21st Century European School
A Black and Gilt Frame, rebate 13.75" x 9.25" (34.9 x 23.5cm)
£30-£40



465. 18th Century European School
A Carved Giltwood Mirror Frame, Arched with inset glass, rebate 13.5" x 11.75" (34.3 x 29.8cm), Overall 23.5" x 18" (59.7 x 45.7cm)
£100-£200



466. 20th Century English School
A Darkwood Frame, rebate 13.25" x 9.75" (33.7 x 24.7cm)
£40-£60



467. Early 20th Century English School
A Pair of Wooden Frames, with gilt slips and inset glass, rebate 13" x 11" (33 x 27.9cm) (2)
£30-£40



468. 21st Century English School
A Gilt Composition Frame, with a fabric slip, rebate 13" x 7.75" (33 x 19.7cm), without slip, rebate 14" x 8.75" (35.5 x 22.2cm)
£60-£80



469. 19th Century English School
A Pair of Gilt Composition Frames, rebate 12.25" x 10"
(31.1 x 25.4cm) (2)
£80-£120



470. 20th Century English School
A Painted Composition Frame, with a gilt oval slip,
rebate 11.75" x 10" (29.8 x 25.4cm), without slip,
rebate 15.5" x 12.75" (39.3 x 32.4cm)
£30-£50



471. 19th Century French School
A Painted Carved Wood Frame, with swept centres and corners,
rebate 11.75" x 9.5" (29.8 x 24.1cm)
£30-£50



472. 21st Century European School
A Gilt Composition Frame, with a fabric slip, rebate 11.75" x 9.25"
(29.8 x 23.5cm)
£30-£50



473. 21st Century English School
A Gilt Composition Frame, rebate 11.5" x 10.5" (29.2 x 26.7cm)
£60-£80



474. 19th Century English School
A Cushioned Maple Frame, with a gilt slip, rebate 11.25" x 8.75"
(28.5 x 22.2cm)
£60-£80



475. 19th Century English School
A Maple Frame, with a gilt inner edge, rebate 11.25" x 8.75"
(28.5 x 22.2cm)
£50-£80



476. Early 20th Century English School
A Black Painted Frame, with a gilt slip and inset glass, rebate 11" x 9"
(27.9 x 22.8cm)
£30-£50



477. 19th Century English School
A Maple Frame, with a gilt slip, rebate 11" x 8.5" (27.9 x 21.6cm)
£40-£60



478. Late 18th Century English School
A Black Painted Frame, with inset glass, rebate 10.25" x 7.5"
(26 x 19cm)
£40-£60



479. 19th Century English School
A Maple Frame, rebate 10" x 8" (25.4 x 20.3cm) and another similar
frame, rebate 8.25" x 6.75" (21 x 17.1cm) (2)
£60-£80



480. 20th Century English School
A Gilt Composition Frame, rebate 10" x 6.25" (25.4 x 15.8cm)
£30-£50



481. 20th Century English School
A Set of Three Painted Wooden Frames, rebate 9.5" x 9.5"
(24.2 x 24.2cm) (3)
£40-£60



482. 19th Century English School
A Darkwood Frame, with a gilt slip, rebate 9.5" x 7.5" (24.2 x 19cm)
£40-£60



483. 20th Century English School
A Painted Composition Frame, with swept and pierced corners,
rebate 9.5" x 7" (24.1 x 17.8cm)
£40-£60



484. Late 18th Century English School
A Black Painted Frame, rebate 9.5" x 6.5" (24.2 x 16.5cm)
£40-£60



485. 19th Century English School
A Maple Frame, with inset glass, rebate 9.25" x 8.25" (23.5 x 21cm)
£40-£60



486. Early 19th Century English School
A Carved Giltwood Frame, surmounted by a military ornament, with an oval slip, rebate 9.25" x 7.5" (23.5 x 19cm), without slip, rebate 11" x 9.5" (27.8 x 24.2cm)
£200-£300



487. Early 20th Century English School
A Pair of Gilt Composition Frames, rebate 9.25" x 6.4" (23.5 x 16.2cm) (2)
£40-£60



489. 19th Century English School
A Darkwood Frame, with a gilt slip, rebate 9" x 7.5" (22.8 x 19cm)
£40-£60



488. 19th Century English School
A Silver and Gilt Ripple Composition Frame, rebate 9" x 7.75" (22.8 x 19.7cm)
£200-£300



490. Early 19th Century English School
A Near Pair of Darkwood Frames, with inset glass, rebate 9" x 6.75" (22.8 x 17.1cm) and 9" x 6.25" (22.8 x 15.8cm) (2)
£40-£60



491. Late 18th Century English School
A Darkwood Frame, with inset glass, rebate 9" x 6" (22.8 x 15.2cm)
£40-£60



492. 20th Century English School
A Gilt Composition Frame, with swept centres and corners, rebate 8" x 5" (20.3 x 12.7cm)
£30-£50



493. 19th Century English School
A Painted Composition Frame, rebate 7.75" x 6.75" (19.7 x 17.2cm)
£30-£50



494. 20th Century English School
A Gilt Composition Frame, with shell corners, rebate 7.25" x 5.5" (18.4 x 14cm)
£30-£50



495. Late 18th Century English School
A Darkwood Frame, with a gilt slip and inset glass, rebate 7.25" x 5" (18.4 x 12.7cm)
£40-£60



496. 19th Century English School
A Wooden Frame, with a gilt slip and inset glass, rebate 6.75" x 5.75" (17.2 x 14.6cm)
£40-£60



497. Late 18th Century English School
A Pair of Darkwood Frames, with gilt inner edges, rebate 6.75" x 5"
(17.1 x 12.7cm) (2)
£60-£80



498. 18th Century Italian School
A Carved Giltwood Frame, rebate 5.75" x 5" (14.6 x 12.7cm)
£200-£400



499. 19th Century English School
A Maple Frame, with a gilt slip and inset glass, rebate 5.5" x 4.5"
(14 x 11.4cm)
£40-£60



500. Late 18th Century English School
A Pair of Darkwood Frames, with inset glass, rebate 4" x 3" (10.1 x 7.7cm) (2)
£80-£120

Forthcoming Fine Paintings & Frames Sale

10th July 2025



To consign to our sales is just £10 (+VAT) per lot
Includes all commission, illustration and insurance.
No other charges

Explanation of Catalogue Terms

The forename(s) (or asterisks where not known) and surname of the artist indicates, in our opinion, an original work by the artist named. The initials of the forename(s) and the surname of the artist indicates in our opinion a work of the period of the artist which may be wholly or in part his/her work.

'Attributed to...'	In our opinion probably a work by the artist, but with less certainty as to authorship in whole or part.
'Studio of ...'	In our opinion a work by an unknown artist in the studio of the artist, possibly under the artist's direction.
'Circle of ...'	In our opinion a work of the period, by an unknown artist with the artist's influence.
'Style of ...'	In our opinion a work at a later date, by an unknown artist following the artist's style.
'Follower of ...'	In our opinion a work at a much later date, by an unknown artist following the artist's style.
'Manner of ...'	In our opinion a work at an unknown date, by an unknown artist following the artist's style.
'After ...'	In our opinion a work at a later date, by an unknown artist copying a work of the artist.
'Signed, Dated & Inscribed'	In our opinion the signature, date and inscription are from the hand of the artist.
'Highlighted Signature'	In our opinion the signature is/are from the hand of the artist, in whole or part, that may have been restored.
'Bears a Signature'	In our opinion the signature is not by the artist and has been added by another hand/hands at a later date.
'Oil Painting'	In our opinion is painted in oils or acrylic.
'Mixed Media'	In our opinion a mixture or combination of part, some or all of the following - Oil, Watercolour, Gouache, Pencil, Ink or Print.

Consign to our 2025 sales

£10 (+VAT) per lot

Includes all commission, illustration and insurance

No other charges

AUCTION INFORMATION

BUYER'S FEES - All purchases are subject to a buyer's premium, which is charged per lot at 25% of the hammer price plus VAT at the current rate of 20% will be added to the buyer's premium of all lots.

CONDITION REPORTS - Condition reports can be requested by contacting us at info@parkerfineartauctions.com or calling us on 01252 20 30 20. Bidders must satisfy themselves as to the condition of each lot. A Condition Report is an honest expression of our opinion and not a statement of fact and is provided as a service to the Seller. Requests for condition reports must be submitted 24 hours before the start of the sale. The absence of a condition report in this catalogue does not imply there are no imperfections in the works.

REQUEST FOR IMAGES - More images can be found in the online catalogue. Requests for additional images of items in the sale can be made up to 24 hours before the start of the sale.

Please note the colours portrayed in the catalogue, and in additional images, are the best attempt at a likeness but cannot be confirmed as identical to the true colours.

Please note that, owing to the recent introduction of money laundering regulations clients wishing to bid in this auction will be asked to provide two forms of identification. This applies to new and existing clients.

ATTENDING THE AUCTION - If intending to buy you are required to register your name and details at our reception desk on the day of the auction. You will then be allocated a bidding number, which you use when bidding for an item.

ABSENTEE BIDS - You can place an absentee bid, and the auctioneer will bid on your behalf to obtain the lot as cheaply as possible as allowed by other bids and reserves. To make an absentee bid you can complete a bidding form at reception, telephone us, or send us your bid by email. You should give us the maximum hammer price you are prepared to pay, remembering to take into account the buyer's premium and any taxes and charges payable on top of the hammer price.

Absentee bids must be submitted by close of business on the day before the sale. If identical bids are submitted, the person who bid first will take precedence.

TELEPHONE BIDDING - You can take part in the sale by bidding over the telephone. Telephone lines must be booked by close of business on the day before the sale and are allocated on a first-come-first-served basis.

ONLINE BIDDING - Bidding can be done through EasyLive Auctions or the-saleroom.com. Bidding on these sites is directly through the relevant platforms and will incur extra commission charges. Please refer to the individual bidding websites for their individual terms and conditions.

PAYMENT - Payment will be accepted, if you are a successful bidder, by bank transfer direct into our bank account, by debit card issued in the name of the Buyer by a UK bank and registered to a UK billing address, by all major UK issued credit cards issued in the name of the Buyer and registered to a UK billing address (up to £1000), or in cash up to £8,000 (subject to relevant money laundering regulations). The name of the bank account holder should match the name of the buyer. Payment may also be made by sterling personal cheques drawn on a UK bank account and made payable to 'Parker Fine Art Auctions Ltd', however Lots paid for by this method cannot be collected until your cheque has cleared. Payment can be made and purchases collected during the auction. All accounts must be settled within 14 days of the sale. Accounts not paid within 14 days will automatically be subject to an interest charge (not exceeding 1.5% per month on the total amount due). Monies from wire transfers and cheques must be cleared into our account for 24 hours before items may be collected.

If the buyer has failed to collect within a period of two months (from sale date), Parker Fine Art Auctions reserve the right to re-enter the uncollected items through auction, to recover the cost of storage and associated costs. At this time the buyer relinquishes all claims to ownership and any right to financial compensation.

COLLECTION - Before being able to collect your purchases you are required to pay the hammer price, plus the applicable charges, and obtain a receipt acknowledging payment.

Once payment for lots has been received collection or transportation of purchased lots must be made within 14 days of the sale to avoid storage charges.

We are open for collections Monday – Friday between 9am and 5pm, or by arrangement.

STORAGE - Storage charges will be levied on all lots not collected within 14 days of the sale of £5 plus VAT per lot per day.

DELIVERY - If you are arranging your own professional collection and delivery, please ensure the lot has been paid for and the transport company has full details of the items to be collected, and we have received an authorisation note.

In some circumstances some very small items may be posted for a fee, but this will be at the Auctioneer's discretion and will be subject to your own Insurance and Liability. Please contact us if you would like details of local shipping companies.

For Full terms and conditions please go to our website
www.parkerfineartauctions.com

Conditions of Sale for Public Auctions

Parker Fine Art Auctions Ltd carries out business with Bidders, Buyers and Sellers on the following conditions and on such terms, conditions and notices as may be referred to herein. All Bidders, Buyers and others participating in a public auction accept that these terms apply to the exclusion of any terms and conditions contained in any of those person's own documents even if the same purport to provide that they or some other terms prevail. Any particular public auction and/or any particular lot in an auction may be subject to different or additional terms which will be published in our auction catalogue online.

The Buyer's attention is particularly drawn to clause 24 (consumers) and clause 23 (non-consumers), which set out the extent of the Auctioneer's and the Seller's liability to the Buyer.

Please read these Conditions together with our "Information for Buyers" document, which provides additional information and terms applicable to our auctions.

1. DEFINITIONS

In these Conditions:

- (a) "Auction Terms and Conditions" means these Conditions, the Terms of Consignment and any other terms applicable to auctions conducted by the Auctioneer and notified to Buyers, Bidders and/or Sellers (as applicable);
- (b) "Auctioneer", "we", "us" or "our" etc. means the firm of Parker Fine Art Auctions Ltd or its authorised auctioneer, as appropriate;
- (c) "Conditions" means these Conditions of Sale for Public Auctions (which include the terms set out in "Information for Buyers");
- (d) "deliberate forgery" means an imitation made with the intention of deceiving as to authorship, origin, date, age, period, culture or source but which is unequivocally described in the catalogue as being the work of a particular creator and which at the date of the sale had a value materially less than it would have had if it had been in accordance with the description;
- (e) "hammer price" means the level of bidding reached (at or above any reserve) when the auctioneer brings down the hammer;
- (f) "Information for Buyers" means the document named Information for Buyers at Public Auction containing additional terms and information for Buyers available on our website at www.parkerfineartauctions.com;
- (g) "Lots" any items or group of items offered for sale by us as agents for the Seller;
- (h) "Seller" means any person that appoints us as their agent to sell Lots on their behalf;
- (i) "Terms of Consignment" means the stipulated terms and rates of commission on which we accept instructions from Sellers or their agents including those terms set out in the document named "Terms of Consignment for Public Auctions" which can be found on our website or are available upon request;
- (j) "Total Amount Due" means the hammer price in respect of the Lot sold together with any premium, Value Added Tax chargeable and any additional charges payable by a defaulting buyer under these Conditions;
- (k) "Sale Proceeds" means the net amount due to the Seller, being the hammer price of the lot sold less commission at the stated rate, Value Added Tax chargeable and any other amounts due to us by the seller in whatever capacity and however arising; "you", "your", etc. refer to the buyer as identified in Clause 3.4;
- (l) The singular includes the plural and vice versa as appropriate; and
- (m) A person includes a natural person, corporate or unincorporated body (whether or not having separate legal personality).

2. FORMATION OF CONTRACT

A contract for the sale and purchase of a Lot shall come into existence between the Seller and the Buyer on these Conditions upon acceptance by the Auctioneer of a bid by the Buyer.

3. BIDDING PROCEDURES AND THE BUYER

- 3.1 Bidders are required to register their particulars before bidding by completing a sale registration form and to satisfy any security arrangements before entering the auction room to view or bid.
- 3.2 Under the money laundering regulations in force we are required to verify the identity of all customers we transact with as well as any beneficiaries on behalf of whom they may transact. Customers who are unable to or refuse to supply required identification documents and proof of address may not be able to bid at our auctions. Copies of

customer due diligence checks will be stored for as long as it is necessary to satisfy legal requirements in an appropriate storage facility which for the avoidance of doubt may include storage solely in electronic form.

- 3.3 The maker of the highest bid accepted by the auctioneer conducting the sale shall be the buyer at the hammer price and any dispute about a bid shall be settled at the Auctioneer's absolute discretion by reoffering the Lot during the course of the auction or otherwise. The auctioneer shall act reasonably in exercising this discretion. The Auctioneer shall rule the bidding and no bid may be retracted.

- 3.4 The Buyer is the person who is successful in purchasing a Lot or Lots in accordance with these Conditions. Purchases made on behalf of a third party are the responsibility of the Buyer in the room. The Auctioneer reserves the right to bid on behalf of the Seller for any Lot and to withdraw, consolidate or divide any Lot or Lots.

- 3.5 Bidders shall be deemed to act as principals (i.e. not on behalf of or as the agent of any other person).

- 3.6 Our right to bid on behalf of the Seller is expressly reserved up to the amount of any reserve below the bottom estimate and the right to refuse any bid is also reserved.

4. INCREMENTS

Bidding increments shall be at the Auctioneer's sole discretion.

5. THE PURCHASE PRICE

The purchase price payable for a Lot is the hammer price plus a buyer's premium thereon of 25% plus VAT on the premium at the rate imposed by law and is payable in accordance with clause 7.

6. VALUE ADDED TAX.

Value Added Tax on the hammer price is imposed by law on all items affixed with a dagger or double dagger symbol. Value Added Tax is charged at the appropriate rate prevailing by law at the date of sale and is payable by buyers of relevant Lots. (Please refer to "Information for Buyers" for a brief explanation of the VAT position).7.

PAYMENT

- 7.1 Immediately a Lot is sold you will:

- (a) give to us, if requested, proof of identity, and
- (b) pay to us the total amount due in pounds sterling.

- 7.2 Any payments by you to us may be applied by us towards any sums owing from you to us on any account whatever without regard to any directions of you or your agent, whether expressed or implied.

- 7.3 In order to comply with money laundering regulations we reserve the right to require proof of source of funds and/or confirmation of the nature and source of wealth for all receipts of monies from clients directly or from third parties for payments on behalf of clients. The completion of the sale of a Lot will be postponed or cancelled at our discretion if further time is needed for investigation, or if you are in breach of your warranties as a buyer, or if we consider the sale to be unlawful or in any way cause liabilities or be detrimental to either us or the Seller.

8. TITLE AND COLLECTION OF PURCHASES

- 8.1 The ownership of any Lots purchased shall not pass to you until you have made payment in full in cleared funds to us of the total amount due.

- 8.2 You shall at your own risk and expense take away any lots that you have purchased and paid for no later than 14 working days following the day of the auction or upon the clearance of any cheque used for payment after which you shall be responsible for any removal, storage and insurance charges.

- 8.3 No purchase can be claimed or removed until it has been paid for.

9. REMEDIES FOR NON-PAYMENT OR FAILURE TO COLLECT PURCHASES

- 9.1 If any Lot is not paid for in full and taken away in accordance with these Conditions, or if there is any other breach of these Conditions, we, as agent for the Seller and on our own behalf, shall at our absolute discretion and without prejudice to any other rights we may have, be entitled to exercise one or more of the following rights and remedies:

- (a) to proceed against you for damages for breach of contract;
- (b) to rescind the sale of that Lot and/or any other Lots sold by us to you;
- (c) to resell the Lot (by auction or private treaty) in which case you shall be responsible for any resulting deficiency in the total amount due (after

- crediting any part payment and adding any resale costs). Any surplus so arising shall belong to the Seller;
- (d) to remove, store and insure the Lot at your expense and, in the case of storage, either at our premises or elsewhere;
 - (e) to charge interest at a rate not exceeding 1.5% per month on the total amount due to the extent it remains unpaid for more than fourteen working days after the sale;
 - (f) to retain that or any other Lot sold to you until you pay the total amount due;
 - (g) to reject or ignore bids from you or your agent at future auctions or to impose conditions before any such bids shall be accepted; or
 - (h) to apply any proceeds of sale of other Lots due or in future becoming due to you towards the settlement of the total amount due and to exercise a lien (that is a right to retain possession of) over any of your property in our possession for any purpose until the debt due is satisfied.
- 9.2 We shall, as agent for the Seller and on our own behalf pursue these rights and remedies only so far as is reasonable to make appropriate recovery in respect of breach of these Conditions
- 10. THIRD PARTY LIABILITY**
- 10.1 All bidders, buyers and other members of the public on our premises are there at their own risk and must note the lay-out of the accommodation and security arrangements. Accordingly neither the auctioneer nor our employees or agents shall incur liability for death or personal injury or for the safety of the property of persons visiting prior to or at a sale (except in each case as may be required by law by reason of our negligence)
- 11. COMMISSION BIDS**
- 11.1 Whilst prospective buyers are strongly advised to attend the auction and are always responsible for any decision to bid for a particular Lot and shall be assumed to have carefully inspected and satisfied themselves as to its condition and authenticity, we will if so instructed clearly and in writing execute bids on their behalf. Neither the auctioneer nor our employees or agents shall be responsible for any failure to do so.
- 11.2 Where two or more commission bids at the same level are recorded we reserve the right in our absolute discretion to prefer the first bid so made.
- 12. WARRANTY OF TITLE AND AVAILABILITY**
- 12.1 The Seller warrants to the auctioneer and you that the Seller is the true owner of the property consigned or is properly authorised by the true owner to consign for sale and is able to transfer good and marketable title to the property free from any third party claims.
- 12.2 We are acting as the agent of the Seller only and give no warranty as to the Seller's title to the Lot.
- 12.3 Save as expressly set out above, all other warranties, conditions or other terms which might have effect between the Seller and you, or us and you, or be implied or incorporated by statute, common law or otherwise are excluded to the fullest extent permitted by law.
- 13. TERMS OF SALE**
- The Seller and the Buyer acknowledge that Lots are sold subject to the stipulations of these Conditions (including the Information For Buyers) in their entirety and on the Terms of Consignment as notified to the Seller at the time of the entry of the Lot.
- 14. DESCRIPTIONS AND CONDITION**
- 14.1 Whilst we seek to describe Lots accurately, it may be impractical for us to carry out exhaustive due diligence on each Lot. Bidders are given ample opportunities to view and inspect before any sale and they (and any independent experts on their behalf) must satisfy themselves as to the accuracy of any description applied to a Lot. Bidders also bid on the understanding that, inevitably, representations or statements by us as to authorship, genuineness, origin, date, age, provenance, condition or estimated selling price involve matters of opinion. We undertake that any such opinion shall be honestly and reasonably held and accept liability for opinions given negligently or fraudulently.
- 14.2 Subject to the foregoing neither we the auctioneer nor our employees or agents nor the Seller accept liability for the correctness of such opinions and all conditions, attributions and warranties, whether relating to description, condition or quality of lots, express, implied or statutory, are hereby excluded.
- 14.3 We are not liable for damage to gilded picture frames, plaster picture frames or picture frame glass. If the Lot is, or becomes dangerous, we may dispose of it without notice to you in advance in any manner we see fit and will be under no liability for doing so. We shall not be liable for any damage to any Lot arising during the viewing, during the sale, or after the sale.
- 14.4 We act as agents only. Each Prospective Buyer by making a bid for a Lot acknowledges that they have satisfied themselves fully as to the attribution and condition of the Lot. Pictures have not been removed from their frames unless specifically mentioned in the Condition Report (as in the event the item is unsold it must be returned to the Seller in the condition it was received by us). This Condition is subject to deliberate forgeries (clause 17).
- 14.5 Private treaty sales made under these Conditions are deemed to be sales by auction for purposes of consumer legislation.
- 15. TRANSFER OF RISK.**
- 15.1 The risk in the Lot shall pass to the Buyer upon completion of the Sale by the Auctioneer.
- 15.2 We are not responsible for the correct description, genuineness or authenticity of any Lot as per these Conditions. The Buyer is deemed to have inspected each Lot and satisfied himself/herself to the condition.
- 16. OWNERSHIP OF THE LOT**
- Title to the Lot purchased will not pass to the Buyer until the Buyer has paid us in full and cleared funds the total amount due pursuant to these Conditions and we have applied such payment to the Lot.
- 17. FORGERIES**
- 17.1 Notwithstanding the preceding Condition, any Lot which proves to be a deliberate forgery (as defined) may be returned to us by you within 21 days of the auction provided it is in the same condition as when bought, and is accompanied by particulars identifying it from the relevant catalogue description and a written statement of defects. If we are satisfied from the evidence presented that the Lot is a deliberate forgery we shall refund the money paid by you for the Lot including any buyer's premium unless:
- (a) the catalogue description reflected the accepted view of scholars and experts as at the date of sale; or
 - (b) you personally are not able to transfer a good and marketable title to us,
- and in the event of clause 17.1 (a) or 17.1 (b) applying you shall have no rights under this condition.
- 17.2 The right of return provided by this clause 17 is additional to any right or remedy provided by law or by these Conditions.
- 18. PRIVACY NOTICE.**
- We will hold and process any personal data in relation to you in accordance with our current privacy policy, a copy of which is available on our website parkerfineartauctions.com
- 19. GENERAL**
- 19.1 We shall have the right, at our discretion, to refuse admission to our premises or attendance at our auctions by any person.
- 19.2 Any right to compensation for losses liabilities and expenses incurred in respect of and as a result of any breach of these Conditions and any exclusions provided by them shall be available to the Seller and/or the Auctioneer as appropriate.
- 19.3 Such rights and exclusions shall extend to and be deemed to be for the benefit of employees and agents of the Seller and/or the auctioneer who may themselves enforce them.
- 19.4 Special terms may be used in catalogue descriptions of particular classes of items in which case the descriptions must be interpreted in accordance with any glossary appearing in the catalogue.
- 20. NOTICES**
- Any notice to any buyer, seller, bidder or viewer may be given by first class mail or email in which case it shall be deemed to have been received by the addressee 48 hours after posting or in the event of email upon actual receipt of such email.

21. **NO WAIVER**
Any indulgence extended to bidders, buyers or sellers by us notwithstanding the strict terms of these Conditions or of the Terms of Consignment shall affect the position at the relevant time only and in respect of that particular concession only; in all other respects these Conditions shall be construed as having full force and effect.
22. **LIABILITY**
Nothing in these Conditions shall limit any liability which cannot legally be limited, including liability for:
- (a) death or personal injury caused by negligence;
 - (b) fraud or fraudulent misrepresentation;
 - (c) breach of the terms implied by section 12 of the Supply of Goods Act 1979 (title and quiet possession) however attention is drawn to clause 12.2.
23. **LIMITATION OF LIABILITY TO NON-CONSUMERS**
(This clause 23 applies only to non-Consumers)
- 23.1 Subject to clause 22, and unless you are an individual purchasing or selling the Lot for purposes which are wholly or mainly outside your trade, business, craft or profession (**Consumer**), our total liability to either the Buyer of the Seller (as appropriate) shall not exceed the value of the Lot sold by the Seller to the Buyer. The following types of loss are wholly excluded by us:
- (a) loss of profits;
 - (b) loss of sales or business;
 - (c) loss of agreements or contracts;
 - (d) loss of anticipated savings;
 - (e) loss of or damage to goodwill, and
 - (f) indirect or consequential loss.
- 23.2 Subject to clause 22, all conditions, warranties and other terms which might otherwise be implied by statute, common law or the law of equity, including without limitation the terms implied by sections 13 to 15 of the Sale of Goods Act 1979, are, to the fullest extent permitted by law, expressly excluded.
- 24.1 **LIMITATION OF LIABILITY TO CONSUMERS**
(This clause 24 applies only to Consumers)
- 24.1 Consumers are reminded that we act only as an agent of the Seller and are not the supplier of the Lots.
- 24.2 If the Auctioneer or the Seller fails to comply with these Conditions, it or they shall be responsible for loss or damage you suffer that is a foreseeable result of its or their breach of these Conditions or its or their negligence, but neither the Auctioneer nor the Seller shall be responsible for any loss or damage that is not foreseeable. Loss or damage is foreseeable if they were an obvious consequence of the breach or if they were contemplated by the Agent and/or the Seller and the Buyer at the time this contract was entered into.
25. **RIGHT TO CANCEL**
- 25.1 If you purchase a Lot at a virtual auction (an auction which is held online only so that there is no possibility for you to attend the auction in person) and you are contracting as a Consumer and the Seller of a Lot is a trader, you will have a statutory right to cancel your purchase of that Lot if you change your mind for any reason. The provisions below set out your legal right to cancel in those circumstances.
- 25.2 You may cancel your purchase at any time from the date of our order confirmation up to the end of the fourteenth day after the day of collection of the lot by you or the person specified by you for collection.
- 25.3 To cancel your purchase, you must inform us of your intention to cancel it. You can do this by completing the model cancellation form which can be found on our website. If you use this method we will email you to confirm that we have received your cancellation. Alternatively, you send us your cancellation notice by any other method and then your cancellation is effective from the date you send us the email or post the letter to us.
- 25.4 If you exercise your right to cancel your purchase, you will receive a refund of the total amount due paid for the Lot in accordance with clause 7. When exercising the cancellation right, you must return the lots to us immediately at your own cost (as set out below).
- 25.5 You are entitled to a reasonable opportunity to inspect the Lots (which will include removing them from their packaging and inspecting them). At all times, you must take reasonable care of the Lots and must not let them out of your possession. They must remain in original, untouched condition. If you are in breach of your obligations to take reasonable care of the Lots in this clause 25.4, we will have a claim against you and may deduct from the refund costs incurred by us as a result of the breach.
- 25.6 This provision does not affect your statutory rights.
- 25.7 The cancellation right described in this clause 25 is in addition to any other right that you might have to reject a Lot, for instance because it is a deliberate forgery as set out in clause 17 above.
26. **EXERCISING THE RIGHT TO CANCEL**
- 26.1 Where you have validly returned a Lot to us under your right of cancellation described in clause 25, we will refund the full amount paid by you for the Lot.
- 26.2 Please note that we are permitted by law to reduce your refund to reflect any reduction in the value of the Lot, if this has been caused by your handling of the Lot in a way contrary to the conditions specified in these terms or which would not be permitted during a pre-sale exhibition held prior to an auction. If we refund you the price paid before we are able to inspect the Lot and later discover you have handled the Lot in an unacceptable way, you must pay us an appropriate amount.
- 26.3 You will be responsible for returning the Lot to us at your own cost.
- 26.4 We will process any refund due to you within the deadlines below:
- (a) if you have collected the Lot but have not returned it to us: fourteen days after the day on which we receive the Lot back from you or, if earlier, the day on which you provide us with evidence that you have sent the Lot back to us; or
 - (a) if you have not collected the Lot or you have already returned the Lot to us: 14 days after you inform us of your decision to cancel your contract.
- 26.5 We will refund you using the same means of payment that you used for the transaction.
- 26.6 Legal ownership of a Lot will immediately revert to the Seller if we refund any such payment to you.
- 27.1 **DISPUTES**
Any dispute not herein provided for shall be settled at the sole discretion of the Auctioneer.
28. **FORCE MAJEURE**
We shall not be in breach of these Conditions nor liable for the delay in performing, or failure to perform, our obligations under these Conditions (or otherwise) if such a delay or failure results from events, circumstances or causes beyond our reasonable control.
29. **ENTIRE AGREEMENT**
These Conditions constitute the entire agreement between the parties and supersede and extinguish all previous agreements, promises, assurances warranties representations and understandings between them, whether written or oral, relating to its subject matter. Except as set out in these Conditions, no variation of these Conditions shall be effective unless it is in writing and signed by the parties (or their authorised representative).
30. **IMAGES**
Prior written consent must be sought by the buyer or any other party for the use of any images, illustrations and written materials produced by or for Parker Fine Art Auctions Ltd relating to a lot or sale, including the contents of a catalogue. Copyright for any of the aforementioned will remain the property of Parker Fine Art Auctions Ltd, subject to the provisions of the Copyright, Design and Patents Act 1988. Parker Fine Art Auctions Ltd and the seller make no representations or warranties that the buyer of a lot will acquire any copyright to other reproduction rights to it.
31. **GOVERNING LAW AND JURISDICTION**
These Conditions shall be governed by and construed in accordance with English law and the parties irrevocably submit to the exclusive jurisdiction of the English courts.



PARKER
FINE ART AUCTIONS
Hawthorn House | East Street | Farnham | Surrey | GU9 7SX

Thursday 5th June 2025

01252 20 30 20
info@parkerfineartauctions.com
parkerfineartauctions.com

