

LIVE WEBCAST ^{ONLINE ONLY} AUCTION



Fluitron

Complete Facility Closure of
Industrial Gas Compressor Manufacturer

SALE DATE

Wednesday, July 23, at 10 AM ET

ASSET LOCATION

330 South Warminster Rd.
Hatboro, PA 19040

INSPECTION

Tuesday, July 22 from 8:30 AM to
4:30 PM ET, or by appointment

COMPLETE CATALOG & INFORMATION:

<https://perfection.global/fluitron>



HAAS EC-1600-YZT 4 AXIS HORIZONTAL MACHINING CENTER



HAAS ST-45L TURNING CENTER

FEATURING: 2023 HAAS EC-1600ZT HMC *SOLD*; 2013 HAAS EC-1600YZT HMC; 2012 MAZAK SLANT TURN NEXUS 500 TURNING CENTER; 2023 HAAS ST-45L TURNING CENTER; HAAS SL-40L TURNING CENTER; 2009 HWACHEON VT1150S CNC VTL; 2011 HAAS VF-6/50 4-AXIS VMC; 2012 HAAS VF-5/50XT 4-AXIS VMC; 2019 HAAS VF-4 VMC *SOLD*; 2023 COSEN C-510 MNC AUTOMATIC HORIZONTAL BAND SAW; 2023 SUNNEN MBB 1660CK PRECISION HONE; 2022 JINAN LF3015 LASER; 2024 BOSS LS 3655 LASER CUTTER/ENGRAVER; (2) 2024 KEYENCE CMM'S; ROYAL 30,000 LB. FORKLIFT; SKYJACK SCISSOR LIFT; CONVENTIONAL MACHINE TOOLS; LATE MODEL MILLER TIG & MIG WELDERS; LISTA & STRONGHOLD CABINETS; 300+ CAT TOOL HOLDERS; (3) HUMONGOUS CEILING FANS; FACTORY SUPPORT EQUIPMENT, AND MORE!



PERFECTION
Industrial Sales

Perfection Industrial Sales

ph +1-847-545-6374 • fax +1-847-427-8884

www.perfectionindustrial.com

In
conjunction
with:



(3) TURNING CENTERS, CNC VERTICAL LATHE

(3) TURNING CENTERS

2023 HAAS ST-45L TURNING CENTER, s/n 3127511, w/ HAAS Control, 34.5" Swing, 98.4" Centers, Live Milling, 15" 3-Jaw Chuck, 12-Position Turret, Tool Eye, Steady Rest, Tailstock, Chip Conveyor

2012 MAZAK SLANT TURN NEXUS 500 TURNING CENTER, s/n 236874, w/ MATRIX NEXUS Control, 40" Swing, 157" Centers, 24" 3-Jaw Chuck, 12-Position Turret, Tool Eye, 4.5" to 20" Steady Rest, Tailstock, Chip Conveyor

2004 HAAS SL-40L TURNING CENTER, s/n 67754, w/ HAAS Control, 40" Swing, 78" Centers, Live Milling, C-Axis, 15" 3-Jaw Chuck, 12-Position Turret, 55 HP, Tool Eye, Tailstock, Chip Conveyor



HAAS SL-40L TURNING CENTER



HAAS ST-45L TURNING CENTER

CNC VERTICAL LATHE

2009 HWACHEON VT-1150S CNC VERTICAL LATHE, s/n 109615312G, w/ FANUC 0iTC Control, 58" Swing, 39" Chuck, 12-Position Turret, Chip Conveyor



HWACHEON VT-1150S CNC VERTICAL LATHE



MAZAK SLANT TURN NEXUS 500 TURNING CENTER

For auction inquiries, please contact Jennifer Reiner at
(847) 545-6374 or jennifer@perfectionindustrial.com

(4) VERTICAL MACHINING CENTERS, ROTARY TABLES, (2) 4 AXIS HMC

(4) VERTICAL MACHINING CENTERS

2011 HAAS VF-6/50 5 AXIS VERTICAL MACHINING CENTER, s/n 1083674, w/ HAAS Control, Table: 64" x 28", Travels: x-64", y-32", z-30", CAT 50 Spindle Taper, 30-ATC, 10,000 RPM, Thru Spindle Coolant, Chip Auger, Probe, 4th & 5th Axis Drive Cards

2012 HAAS VF-5/50XT 5 AXIS VERTICAL MACHINING CENTER, s/n 1100003, w/ HAAS Control, Table: 62" x 23", Travels: x-60", y-26", z-25", CAT 50 Spindle Taper, 30-ATC, 7,500 RPM, Thru-Spindle Coolant, Chip Auger, Probe, 4th & 5th Axis Drive Cards

2019 HAAS VF-4 4 AXIS VERTICAL MACHINING CENTER, s/n 1160559, w/ HAAS Control, Table: 52" x 19.5", Travels: x-50", y-20", z-25", CAT 40 Spindle Taper, 50+1 ATC, 8,100 RPM, Thru-Spindle Coolant, Chip Auger, Probe, 4th Axis Drive Card ***SOLD Prior to Auction***

HAAS VF-3B 4 AXIS VERTICAL MACHINING CENTER, s/n 25783, w/ HAAS Control, Travels: x-40", y-20", z-25", CAT 40 Spindle Taper, 20 ATC, 7,500 RPM, Chop Auger, 4th Axis Drive Card



HAAS VF-6/50 5 AXIS VERTICAL MACHINING CENTER



HAAS VF-5/50XT 5 AXIS VERTICAL MACHINING CENTER



HAAS VF-4 4 AXIS VERTICAL MACHINING CENTER

ROTARY TABLES

HAAS 18" 4TH AXIS ROTARY TABLE, w/ 21" 3-Jaw Chuck, 9" Bore, Tailstock

HAAS 9" 4TH AXIS ROTARY TABLE, w/ 8" 3-Jaw Chuck, Tailstock

(2) 4 AXIS HORIZONTAL MACHINING CENTERS

2023 HAAS EC-1600-ZT 4 AXIS HORIZONTAL MACHINING CENTER, s/n 2055691, w/ HAAS Control, Table: 64" x 32", Travels: x-64", y-50", z-40", b-30" Integrated 4th Axis @ 1-Deg. Rotary Table, 50-ATC, 30 hp Spindle, CAT 50 Spindle Taper, 7,500 RPM. Thru-Spindle Coolant, Chip Auger ***SOLD Prior to Auction***

2013 HAAS EC-1600-YZT 4 AXIS HORIZONTAL MACHINING CENTER, s/n 2054166, w/ HAAS Control, Table: 64" x 32", Travels: x-64", y-50", z-40", b-30" Integrated 4th Axis @ 5-Degree Rotary Table, 50 ATC, 30 hp Spindle, CAT 50 Spindle Taper, 10,000 RPM, Thru-Spindle Coolant, Chip Conveyor



VIEW OF HAAS ROTARY TABLES



HAAS EC-1600-ZT 4 AXIS HORIZONTAL MACHINING CENTER



HAAS EC-1600-YZT 4 AXIS HORIZONTAL MACHINING CENTER

MACHINE SHOP

MACHINE SHOP

2023 COSEN C-510 MNC AUTOMATIC HORIZONTAL BANDSAW, s/n 111CM01054, w/ 14" Round & 13" x 30" Rectangle Capacity, 50-328 FPM Blade Speed, 5 HP

2023 SUNNEN MBB-1660CK PRECISION HONE, s/n 97940, 0.060" - 6.5" Bore Diameter, 1/8" - 16" Bore Length, 200 - 2,500 RPM

MAZAK 34-160 ENGINE LATHE, s/n 33690W, w/ 34" Swing, 160" Centers, 31" Chuck, Taper Attachment, 1900 RPM, Tailstock, 2-Axis DRO

NAMSEON ACRA-TURN ENGINE LATHE, s/n N818803001, w/ 24" Swing, 120" Centers, 12" 3-Jaw Chuck, 55-1200 RPM, ACU-RITE DRO

VIKTOR 2080S ENGINE LATHE, s/n CC880808007, w/ 20" Swing, 80" Centers, 8" 3-Jaw Chuck, 20-1550 RPM, NEWALL DP700 DRO, Tailstock, (Tool Post Sold Separately)

HARDINGE HC TOOLROOM LATHE, s/n HC-4881-S, w/ Collet Nose, 125-3000 RPM, Turret, Spare 6" 6-Jaw Chuck, Overhead Threading

ACER ULTIMA 4VKII 5 HP VERTICAL MILL, s/n 96090845H, 10" x 50" Power Feed Table, Pneumatic Draw Bar, NEWALL SAPPHIRE 2-Axis DRO

REDLINE 50-TON H-FRAME SHOP PRESS, s/n na, w/ Air Pedal, 36" Carriage Movement, 8" Height Adjustment, Carriage Winch, 10" Ram Cylinder Movement Left and Right

ALSO: MORRIS SETMASTER 1 Tool Pre-Setter, CAT 50 & CAT 40 Tool Holders, Live Tooling, Tool Blocks, **HUOT Tool Carts**, Drills, End Mills, Taps, Dies, Reamers, Carbide Inserts, Drill Chucks, Chucks, Rotary Tables, Super Spacers, Broach Tooling, Collets, Machine Vises, and More



SUNNEN MBB-1660CK PRECISION HONE



COSEN C-510 MNC AUTOMATIC HORIZONTAL BANDSAW



MAZAK 34-160 ENGINE LATHE



NAMSEON ACRA-TURN ENGINE LATHE



VIKTOR 2080S ENGINE LATHE



HARDINGE HC TOOLROOM LATHE

**PRE-AUCTION OFFERS INVITED
ON MAJOR ASSETS**

Bidding Available Through
BidSpotter

View our current auction schedule at www.perfectionindustrial.com

INSPECTION, WELDING, ROLLING STOCK

INSPECTION

2024 KEYENCE IM-8030T IMAGE DIMENSION MEASURING SYSTEM, s/n 2C3P00239, w/ IM-8000 Image Measuring System Computer & Monitor

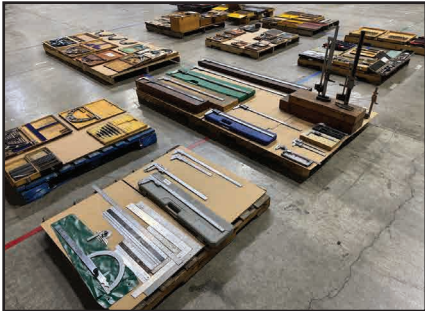
2024 KEYENCE XM-5000 HANDHELD COORDINATE MEASURING MACHINE, s/n 2C0P000239, w/ XM-P5000 Probe, Laptop, Tripod, & Carrying Case

MITUTOYO PH-350 OPTICAL COMPARATOR, S/N 3105

ALSO: Height Gauges, Outside Micrometers, Digital, Dial and Vernier Calipers, Dial Bore Gauges, Granite Surface Plates, Pin Gage Sets, Gage Block Sets, and More



KEYENCE XM-5000 HANDHELD COORDINATE MEASURING MACHINE



VIEW OF INSPECTION EQUIPMENT



KEYENCE IM-8030T IMAGE DIMENSION MEASURING SYSTEM

WELDING

MILLER DYNASTY 300 TIG WELDER, s/n ND310391L

MILLER SYNCROWAVE 350 LX TIG WELDER, s/n KK269131, w/ MILLER COOLMATE 3 Cooler

MILLER SYNCROWAVE 250 DX TIG WELDER, s/n LG011212L

MILLER INVISON 456MP MIG WELDER, s/n LG460085A, w/ MILLER 70 Series Wire Feeder

MILLER INVISON 456P MIG WELDER, s/n KJ242149, w/ MILLER 22A Wire Feeder

MILLER DELTAWELD 450 MIG WELDER, s/n LG460085A, w/ MILLER 70 Series Wire Feeder

HYPERTHERM POWERMAX 65 SYNC PLASMA POWER SOURCE, s/n 083340

ARONSON D5 WELDING POSITIONER, s/n 5666, 24" Table, w/ 22" 4-Jaw Chuck, 3.75" Bore, 500 Cap.

ACORN WELDING TABLE, 145" x 57"

ACORN WELDING TABLE, 60" x 60" w/ Wilton 4" Vise

GREENERD NO. 3-1/2 ARBOR PRESS

ALSO: C-Clamps, Welding Consumables, Abrasives, Supplies, Gloves, Helmets, Whips, Regulators and More



VIEW OF INSPECTION EQUIPMENT

ROLLING STOCK

ROYAL T300B-SP 30,000 LB. LP FORKLIFT, s/n 1085L89, 3-Stage Mast, Solid Tire, Overhead Protection, 72" Fork Length

SKYJACK SJII 3220 SCISSOR LIFT, s/n na, 20' Max Platform Height, 26' Max Working Height, 500 Lb. Max Platform Capacity



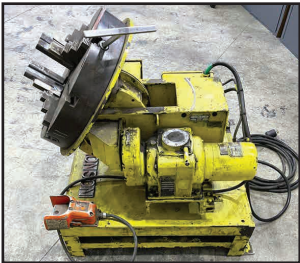
MILLER INVISON 456MP MIG WELDERS



MILLER DYNASTY 300 TIG WELDER



ROYAL T300B-SP 30,000 LB. LP FORKLIFT



ARONSON D5 WELDING POSITIONER



ACORN WELDING TABLE



SKYJACK SJII 3220 SCISSOR LIFT

PLANT SUPPORT

PLANT SUPPORT

SPANCO 1-TON FREE STANDING CRANE SYSTEM, Approx. 17' x 21' x 14'H, DAYTON 1-Ton Electric Hoist w/ Pendant Control

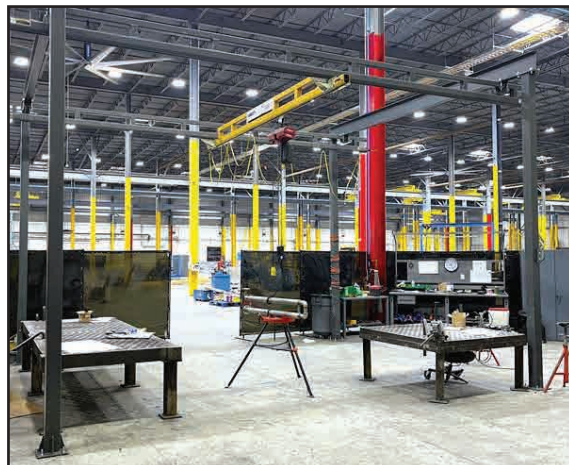
ALSO: MAZZELLA 96" Spreader-Bar, 4-Ton Cap, Pallet Jacks, Nylon Rigging Straps, Lifting Chain, Eye Bolts, Lifting Shackles, Self Dumping Hoppers, **STRONGHOLD** Shop Cabinets, **LISTA** Modular Tool Cabinets, and Work Benches, Mobile Air Compressors, Power Tools, Air Tools, Hand Tools, Tool Boxes, Lift Tables, Pallet Racking, Shipping Department, Complete High-End Office Furniture, Break Room, Conference Rooms and More



VIEW OF NEW AND SPARE MOTORS



VIEW OF DUMPING HOPPERS



SPANCO 1-TON FREE STANDING CRANE SYSTEM



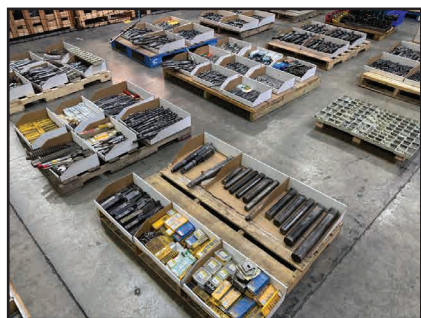
VIEW OF HAND TOOLS



VIEW OF ASSORTED COLLETS



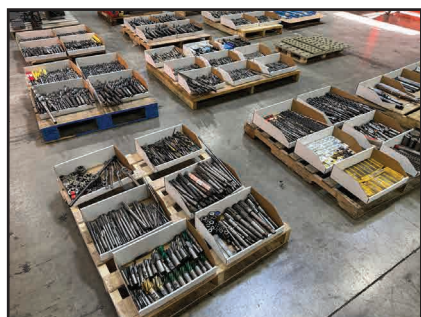
HUMONGOUS HVLS FANS



VIEW OF PERISHABLE TOOLING



VIEW OF PERISHABLE TOOLING



VIEW OF PERISHABLE TOOLING



VIEW OF ASSORTED VISES



VIEW OF TOOL HOLDERS

PLANT SUPPORT



VIEW OF ASSORTED CHUCKS



VIEW OF OFFICE FURNITURE



VIEW OF OFFICE FURNITURE



VIEW OF OFFICE FURNITURE



For auction inquiries, please contact Jennifer Reiner at
(847) 545-6374 or jennifer@perfectionindustrial.com

View our current auction schedule at www.perfectionindustrial.com

SALE DATE

Wednesday, July 23, at 10 AM ET

ASSET LOCATION

330 South Warminster Rd.
Hatboro, PA 19040

INSPECTION

Tuesday, July 22 from 8:30 AM to
4:30 PM ET, or by appointment

REMOVAL

All small items must be removed by Monday, July 28. All other items must be removed no later than Friday, August 8. All removal is strictly on an appointment only basis. Anyone removing purchased items with a lift truck or another powered vehicle must have a certificate of insurance with a \$2M General Liability policy, the policy must include a Worker's Compensation rider, and that certificate of insurance must be provided to the auctioneer for review and approval prior to the auction.

TERMS OF SALE

An 18% Buyer's Premium will be charged on all assets purchased by buyers providing full payment is made within 48 hours following the sale. Acceptable forms of payment are cashier's check, company check (with bank letter of guarantee) or wire transfer within 48 hours of the sale close. For any Buyers failing to pay within the 48 hour stated payment period, the Buyer's Premium will be increased to 20%. All invoices paid with a credit card are subject to a 20% Buyer's Premium. Everything will be sold to the highest bidder, in accordance with the Auctioneer's customary "Terms of Sale", copies of which will be posted on the Auctioneer's website and subject to additional terms announced the day of sale. All items are sold "As is, Where is" without any warranty, express or implied.

FURTHER INFORMATION

For auction inquiries, please contact Jennifer Reiner at (847) 545-6374 or jennifer@perfectionindustrial.com.

Bidding Available Through

BidSpotter