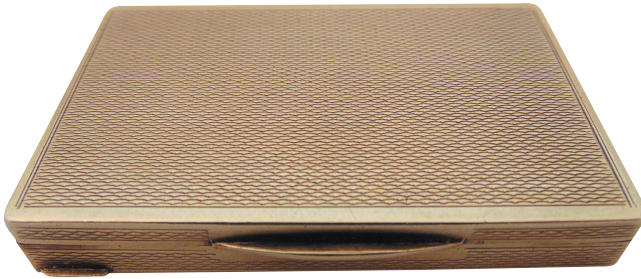


BUSHEY Auctions

Catalogue

Auction of Fine Art, Antiques, Collectables,
Alcohol, Clocks, Watches, Jewellery & Silver



Lot 367

Thursday 13th March 2025

Auction starts at 11am

Live Online Bidding

Absentee and Telephone Bids accepted

No Public Attendance on Auction Day

Viewing by Appointment

6th to 12th March

Unit 9 Shakespeare Industrial Estate, Watford. WD24 5RR

www.busheyauctions.com

BID LIVE ONLINE FOR £3
PER AUCTION
easyliveAuction.com

the-saleroom.com

BUSHEY Auctions

Welcome to Bushey Auctions

We hope you will have an enjoyable time bidding for the fantastic array of antiques, fine art, collectables, jewellery, silver etc from private collections. Please remember when placing your bid, the Buyers premium is 20% + VAT on top of the hammer price.

Please note that any lots purchased via online bidding portals will be subject to an additional commission charge imposed on the hammer price in addition to our basic Buyers Premium.

Please see the individual sites for rates of commission.

Bushey Auctions hold monthly auctions and valuation days; please see the back of the catalogue for forthcoming dates. We are happy to make personal appointments to view items for submission into future sales. We also offer probate and insurance valuations. Our team is always available to help, please don't hesitate to ask any of the team if you need assistance. The information below will help you enjoy the event; it sets out how the auction works.

CONDITIONS OF SALE

VIEWING (BY APPOINTMENT ONLY for 7 days before auction date)

The catalogue contains a Lot no, Description and Estimate for each lot. The description is for guidance only and as some items are of an age or nature that means they may not be in perfect condition, we advise you to examine the lots yourself before the auction starts. Please take care when handling items, all breakages and damage will be charged for. Viewing times are shown on the front of the catalogue. All items are offered for sale as viewed and are sold as seen. The Auctioneer does not take responsibility for authenticity, origin or estimated price. All items are sold without any warranty or claim as to its suitability or fitness for its apparent purpose so as a prospective Buyer, you should use your judgement. The wording A/F within the description is an indication that the lot may not be in good condition. All electrical items are sold on the express condition that the winner ensures they are examined by a competent electrician before connecting them to any source of electricity.

Condition Reports will be supplied until 4 p.m. the day before auction day.

All sales are final and no refunds are given.

RESERVE PRICES

Some items have a reserve price. Where necessary, the Auctioneer will protect the reserve on an item and use his discretion up to 10%. If this price is not reached, the Auctioneer will record the item as unsold and move on to the next item.

THE BUYER

The highest bidder as determined by the Auctioneer is the Buyer. The Auctioneer has absolute discretion to settle any dispute that may arise and to refuse bids or to advance the bidding as seen fit. His decision is final. These terms and conditions also apply to after-sale bids, timed auction bids and private treaty sales.

In cases of dispute these Conditions of Sale are governed by UK jurisdiction under English Law.

THE BUYER'S PREMIUM

This is the commission paid to the auctioneer by the Buyer over and above the highest bid value (often referred to as the Hammer Price) of each item. **OUR BUYER'S PREMIUM IS 20% + VAT (total 24%). So if you are the highest bidder on an item with a £100 bid, the total cost to you is £124. Please take this into account when bidding.**

Please see the individual sites for rates of commission.

Please note that any lots purchased via online bidding portals will be subject to an additional commission charge imposed on the hammer price in addition to our basic Buyers Premium. Certain works by living artists or artists deceased within the last 70 years will incur an Artist's Resale Right royalty charge when sold with a hammer price of £1000 or more.

ONLINE BIDDING

We offer online bidding services via www.easyliveauction.com and www.the-saleroom.com

Please note that any lots purchased via online bidding portals will be subject to an additional commission charge imposed on the hammer price in addition to our basic Buyers Premium.

Please see the individual sites for rates of commission.

Payment must be made within 48 hours, by debit card or bank transfer, collection is by appointment only from our Watford showroom. Unless by prior arrangement, storage charges of £5 per item per day will be incurred thereafter. If payment is not received a week after the auction date, the bidder's account will be blocked on all internet bidding sites (the comments are available to all auctioneers).

PAYMENT

You are welcome to pay by cash, cheque, electronic bank transfer or debit card. Credit cards will only be accepted up to the value of £500. A 3% surcharge will apply to Business debit/credit cards and International debit/credit cards. We reserve the right to hold items paid for by cheque until the cheque has cleared.

Please note, once the Auctioneer has determined yours to be the winning bid, a legal contract is created and you are responsible for and obliged to pay for the item(s). If full payment is not received within two weeks after the auction date Bushey Auctions reserve the right to hand the bidder's account over to our debt collection agency. In the event your account is passed for recovery please be advised you will be responsible for all additional costs which will include but not limited to debt recovery costs, legal costs, interest and storage charges. This will affect your bidder status at Bushey Auctions and any other auction houses as well as internet bidding sites and should the matter proceed through the courts this may affect your credit status. Bushey Auctions reserve the right to cancel the sale and re-sell the item(s) won and can also proceed against the Buyer for breach of contract. Any deposits or part payments shall be forfeited and the defaulter shall make good any loss arising from the resale, together with the charges and expenses in respect to both sales.

So please only bid up to the amount you are prepared to pay and make sure you allow for the Buyer's Premium and VAT.

IF YOU CAN'T MAKE THE AUCTION, WE CAN BID FOR YOU

If you would like to bid for an item, we are happy to bid on your behalf. Please request a form by email or complete the Absentee/Commission bidding form found on our website stating the maximum you are prepared to bid (minimum bid £20). You can also bid over the telephone for lots estimated over £50. The form to book a telephone line is also found on our website.

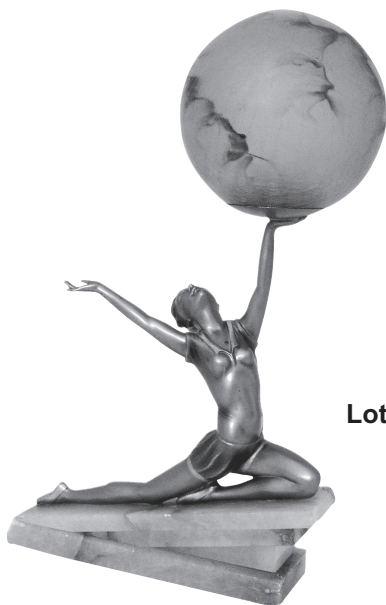
All forms must be received by 4 p.m. the day before auction day. Please note that acceptance is not guaranteed. We require debit or credit card details for all absentee/commission/telephone bids as security for your bid and may require a deposit of 50% of your maximum bid. We will then bid for you up to your maximum, attempting to secure the item at the lowest required to beat all other bids. We will contact you if you are the winning bidder for the lot(s) and will arrange payment and collection with you.

Payment must be made within 48 hours and we reserve the right to charge the card given in full payment including all fees. Unless by prior arrangement, storage charges of £5 per item per day will be incurred thereafter.

Lot No.	Description	Estimate
Furniture, Mirrors, Carpet & Lighting		
1	A continental Kingswood roll top desk with seven drawers, fitted interior on cabriole legs with cast bronze mounts, 102 x 76.5 x 45.5cm	£150-£200
2	A 19th century rectangular mahogany sideboard, the hinged moulded doors revealing fitted interior all on plinth base, 90 x 136.5 x 46cm	£100-£150
3	A late Victorian rectangular mahogany glazed display cabinet with glass shelves, 98 x 91 x 30cm	£40-£60
4	A late Victorian rectangular mahogany glazed display cabinet with glass shelves, 97 x 77 x 26cm	£40-£60
5	An Edwardian style shaped rectangular sideboard with single drawer on four tapering rectangular legs, 79 x 121 x 55cm	£100-£150
6	A mahogany rectangular side table, the two drawers baize lined fitted interior with brass all on four cabriole legs, 76 x 104 x 58.5cm	£60-£90
7	A late 19th century games table on circular base with four ball and claw feet, 74.5 x 91.5 x 45cm closed	£100-£150
8	A 19th century mahogany rectangular games table on carved pedestal base with four claw feet, 74.5 x 91.5 x 45cm closed	£150-£200
9	A rectangular mahogany occasional table with canted corners on four scroll legs, 71 x 50 x 50cm	£40-£60
10	An Edwardian bow fronted rectangular occasional table with three drawers on four tapering legs, 74 x 46 x 31.5cm	£40-£60
11	A continental oval mahogany and Kingswood galleried occasional table on four cabriole legs, 75 x 56 x 40cm	£50-£80
12	A continental demi-lune Kingswood and mahogany occasional table with galleried marble top, gilt metal mounts, single drawer, all on four cabriole legs, 73 x 62 x 31cm	£100-£150
13	A pair of mahogany demi-lune consol tables on turned wooden supports, 75.5 x 91.5 x 30cm each	£80-£120
14	A mahogany nest of three rectangular tables on tapering rectangular legs, tallest 59.5 x 49 x 33cm	£30-£50
15	An oriental rectangular black lacquered cabinet, hinged doors, brass mounts with applied stoneware figures in an oriental landscape, 94 x 64 x 31cm	£50-£80
16	A Victorian trumpet form octagonal oak sewing table on three outswept legs, 74.5 x 44 x 42cm	£80-£120

Lot No.	Description	Estimate
17	An Edwardian rectangular sewing table with hinged top to reveal fitted interior on four tapering rectangular legs, 72 x 40 x 40.5cm	£40-£60
18	A rectangular brass and glass display cabinet table on four rectangular legs, 54 x 47 x 33cm	£30-£50
19	An Edwardian circular wine table on three outswept legs, 50.5 x 35cm	£30-£50
20	An early 20th century mahogany Canterbury of customary form with single drawer and original castors, 48.5 x 49 x 456.5cm	£40-£60
21	An oak three tier plate stand of customary form, 89 x 28.5 x 25.5cm	£30-£50
22	A mahogany three tier plate stand of customary form, 89 x 27 x 25.5cm	£30-£50
23	A pair of Biedermieir style satin birch armchairs with upholstered seats and backs	£120-£180
24	A pair of profusely carved oak hall chairs with pierced backs, barley twist column supports on four turned legs	£80-£120
25	A pair of French light oak hall chairs with upholstered seats and back on four fluted cylindrical legs	£80-£120
26	A set of four folding mahogany directors chairs by Geebro of customary form	£60-£90
27	An early 20th century mahogany desk chair with a leather seat on four cabriole legs	£40-£60
28	A mahogany occasional chair with floral tapestry seat, carved top rail	£30-£50
29	An oriental hardwood floor standing two section double sided folding screen room divider with silk panels, frame profusely carved with bird, floral and foliate decoration, the silk panels decorated to both sides with wild ducks on water, 180 x 132cm	£150-£200
30	A cast iron circular occasional table with scroll pierced top and three scroll legs, 68 x 47cm	£70-£100
31	An early 20th century rectangular white cast iron umbrella and stick stand, 64 x 66 x 28cm	£50-£80
32	A black lacquered rectangular umbrella and stick stand in the Chinoiserie style with simulated bamboo supports, 46 x 24.5 x 24.5cm	£30-£50

Lot No.	Description	Estimate
33	A brass umbrella and stick stand in the form of a male figure on shaped oval base with scroll supports, 58 x 36cm	£40-£60
34	An oak coppered umbrella and stick stand of tapering cylindrical form with pierced side handles, 41cm (h)	£30-£50
35	A Persian wool and silk carpet with central blue and red repeating pattern, cream ground and blue, red and cream repeating border, 170 x 94cm	£100-£150
36	A Rococo style gilded wooden rectangular wall mirror, pierced and carved with leaves and flowers, 97 x 61.5cm	£60-£90
37	A 1950s circular wall mirror surmounted by flowers, leaves and a bust of a lady, 51 x 38cm	£30-£50
38	An Edwardian mahogany dressing table mirror of shield form on shaped rectangular base and three drawers with brass handles, 60 x 44 x 22.5cm	£40-£60
39	An early 20th century mahogany circular table top with barley twist inset lamp stand all on carved wooden base, to include PAT test January 2025, 165cm (h)	£50-£80
40	An early 20th century brass telescopic standard lamp on three outswept legs, 147cm (h)	£50-£80
41	A pair of copper and brass anchor lights of customary form, converted to electric, 57cm (h)	£100-£150



Lot 44

Lot No.	Description	Estimate
42	A pair of Victorian lamp bases in the aesthetics style, decorated with leaves and flowers on circular spreading bases, 36cm (h)	£40-£60
43	An Art Deco frosted coloured glass figural table lamp in the form of a semi nude kneeling lady holding a geometric glass shade, 41cm (h)	£150-£200
44	An Art Deco style table lamp in the form of a lady holding a globe, mounted on a rectangular marble base, 46cm (h)	£80-£120
45	A cast metal Art Deco style figural table lamp in the form of two ladies holding a globular glass shade, 27.5cm (h)	£80-£120
46	A Victorian style cast iron table lamp with frosted glass shade A/F, 60cm (h)	£70-£100
47	A gilt metal figural table lamp on raised base to include shade, 62cm (h)	£60-£90
48	A spelter table lamp in the form of a Putti holding a flame with glass shade, 81cm (h)	£40-£60
49	A gilt metal table lamp in the form of an oil lamp on raised circular base with stiff leaf border, 29.5cm (h)	£30-£50
50	An early 20th century brass telescopic desk lamp with frosted glass shade on raised circular base, 48cm (h)	£40-£60
51	A pair of vintage Kashmiri painted wooden table lamp stands on raised circular bases, 35cm (h)	£60-£90

Fine Art

52	Jack Vettriano framed and glazed polychromatic print titled Waltzers, 56 x 47cm	£60-£90
53	Jack Vettriano framed and glazed polychromatic print titled The Singing Butler, 48 x 59cm	£60-£90
54	Louis Wain framed and glazed polychromatic lithographic print of dogs and a cat, 42 x 98.5cm	£40-£60
55	Archibald Thorburn framed and glazed limited edition 108/500 polychromatic lithographic print of grouse in the Highlands, 33.5 x 52cm	£30-£50
56	Clive Hardwick two framed and glazed limited edition polychromatic lithographs of Brixham 77/250 and Fowey 34/250, signed bottom right, 18.5 x 18.5cm each	£30-£50
57	Tully Crook framed and glazed polychromatic silkscreen print titled Floating, limited edition 40/200 signed bottom right, 32 x 29.5cm	£30-£50

Measurements for image area only

Lot No.	Description	Estimate
58	Zami Steynovitz framed seriagraph on canvas, signed bottom right titled Angel at Night, to include documents, 33.5 x 23.5cm	£80-£120
59	Zami Steynovitz framed and glazed polychromatic print titled Yemeni Wedding, signed bottom right limited edition 189/300, 17.5 x 12.5cm	£40-£60
60	Zami Steynovitz framed and glazed polychromatic print titled Morning Serenade, 20.5 x 24cm	£40-£60
61	Allan framed and glazed ink drawing on paper, study of a seated nude, signed and dated bottom left, 59 x 41cm	£40-£60
62	Grigory Georgievich Filippovski framed and glazed ink on paper illustration of Germinal By Emile Zola, signed bottom left, to include documentation, 13.5 x 12cm	£40-£60
63	An early 20th century framed and glazed pastel and gouache oval portrait of a lady, indistinctly signed bottom right, 57 x 44cm	£100-£150
64	Theodore Ramos (Spanish 1928-2018) framed and glazed watercolour of a Jersey coastal scene, signed bottom right and dated 1949, 20 x 30cm	£100-£150
65	Joseph Halford Ross framed and glazed watercolour of a country cottage and garden scene, signed bottom left, 37.5 x 27cm	£30-£50
66	Gian Gianni a pair of framed and glazed watercolours of Italian urban scenes, signed to the bases, 40 x 17.5cm	£40-£60
67	Frank Forty framed and glazed monochromatic sketch of a farm house, label to verso, 22 x 31cm	£30-£50
68	Baker Benjamin of Bath framed and glazed watercolour of houses by a stream, monogrammed bottom right, 20 x 16cm	£30-£50
69	Claude Hulk framed and glazed watercolour of trees by a lake, signed bottom left, 17 x 29cm	£40-£60
70	Claude Hulk framed and glazed watercolour of a Mediterranean scene, signed bottom left, 16.5 x 30.5cm	£40-£60
71	Framed and glazed English School watercolour and pencil drawing titled Trees in a Landscape, Carlton Gallery label to verso, 27.5 x 22cm	£30-£50
72	George Hann framed oil on canvas of sailing boats in a harbour, signed bottom left, 40.5 x 76cm	£100-£150
73	George Hann framed oil on panel of houses by a dock, signed bottom right, 51 x 76cm	£100-£150

Lot No.	Description	Estimate
74	Therese Dan framed oil on canvas of a lady seated on a bench in a park, signed and dated bottom left, gallery label to verso, 58.5 x 79.5cm	£60-£90
75	Therese Dan framed oil on canvas of houses by a road, signed bottom right, gallery label to verso, 59 x 80cm	£60-£90
76	Pottronot framed oil on canvas titled On the Cote d'Azur, signed bottom right, gallery label to verso, 45 x 59.5cm	£70-£100
77	Raquel Perez Fariñas framed oil on canvas of a cat in an interior scene, signed bottom right, details to verso, 122 x 98cm	£200-£300
78	Johan Laurentz Jensen framed oil on panel still life of flowers and fruit on a table, signed bottom right, 40 x 30cm	£150-£200
79	Hendrik Jan Wesseling (1881-1950) framed oil on canvas still life of flacons, vases and fruits, signed bottom right, 66 x 47cm	£70-£100
80	A framed oil on panel still life of vases, a jug and a coffee pot, 43 x 55cm	£50-£80
81	A framed oil on board still life study of flowers in a vase, 49 x 39cm	£30-£50
82	A framed oil on canvas still life of flowers in a vase, 52.5 x 31cm	£30-£50
83	A framed oil on canvas of a seated Rabbi studying a book, signed top left, 60 x 50cm	£30-£50
84	Yulia Langer framed oil on canvas titled Wings of Love, signed bottom left, labels and documents to verso, 60 x 75cm	£60-£90
85	A framed oil on canvas of a Kletzmer band, 46 x 60cm	£40-£60
86	Roger Turner framed oil on panel of a lady with braided hair, signed bottom right, 46 x 36cm	£100-£150
87	A framed oil on panel abstract of a Mother and Child, 59 x 54cm	£50-£80
88	A framed oil on canvas of children and a dog, indistinctly signed bottom right, 36 x 31cm	£70-£100
89	Pieter Cornelis Dommershuijzen framed and glazed oil on panel of a Dutch street scene, signed bottom left, 30 x 22cm	£120-£180
90	Greta Bardy framed and glazed oil on panel titled Bois de Boulogne, signed bottom left, label to verso, 46.5 x 37.5cm	£30-£50
91	Anthony Curtis framed oil on panel titled Calligraphic Painting dated 1961, signed bottom right, 48.5 x 59cm	£50-£80

Lot No.	Description	Estimate
Porcelain		
92	Royal Worcester Chamberlain part dinner service, as designed for the Prince Regent in 1811, to include plates, bowls cups and saucers (106)	£200-£300
93	Aynsley Forget Me Not dinner and tea service to include plates, bowls, sauce boat on stand, cups, saucers and a teapot (96)	£300-£500
94	Royal Albert Old Country Roses dinner, tea and coffee service to include plates, bowls, cups saucers, teapot, coffee pot, serving dishes and a sauce boat and stand (125)	£200-£300
95	Noritake Howo pattern blue and white porcelain to include a teapot, a vegetable dish and an oval patter (20)	£50-£80
96	Paragon Athena to include covered tureen, salad bowls, tea cups, saucers, a sugar bowl and Paragon Belinda coffee cups and saucers (44)	£50-£80
97	Aynsley Leighton cobalt blue and gold pattern to include tea cups and saucers, coffee cans and saucers, covered sugar bowl and a sauce boat (50)	£100-£150
98	Minton Spring Bouquet teaset for twelve place settings to include cups, saucers, plates, a teapot, milk jug and sugar bowl (42)	£100-£150
99	Royal Albert Old Country Roses teaset for six place settings to include cups, saucers, ginger jar and cover and plates (42)	£50-£80
100	Heathcote China circa 1920 teaset decorated with flowers and leaves, to include cups, saucers and plates (23)	£80-£120
101	Royal Albert Trigo pattern teaset circa 1930 for six place settings to include cups, saucers, plates, cake plates, milk jugs and sugar bowls (23)	£50-£80
102	Shelley Melody teaset to include teapot, cake stand, cake plates, cups and saucers (25)	£220-£320
103	A quantity of blue and white china including Minton, Delft, Meakin, Burslem, Ridgway and Sutherland (34)	£80-£120
104	Aynsley blue and gold part tea service to include cups, saucers, a teapot, milk jug and sugar bowl (34)	£150-£200
105	Crown Staffordshire Red Roses tea service to include cups, saucers and a milk jug (22)	£40-£60
106	A mid 20th century Italian lustre ceramic teaset to include a teapot, cups and saucers (23)	£30-£50

Lot No.	Description	Estimate
107	Herend two handled table centrepiece decorated with fruits, flowers and leaves, marks to the base, 43,5cm (d)	£300-£500
108	Herend circular basket with pierced side and scroll handles decorated with birds and butterflies, marks to the base, 27cm (d)	£150-£200
109	Herend hors d'oeuvres dish of rectangular form decorated with fruit, flowers and leaves, marks to the base, 34 x 23.5cm	£200-£300
110	Herend Chinese bouquet orange Appoyni pattern oval fish platter with detachable pierced liner, marks to the base, 61.5cm (w)	£200-£300
111	Herend oval fish platter with pierced detachable liner decorated with fruits, mushrooms, flowers and leaves, marks to the base, 61.5cm (w)	£200-£300
112	A pair of Herend Chinese bouquet orange Apponyi pattern table candlesticks in 18th century style, marks to the bases, 18.5cm (h)	£120-£180
113	Herend Chinese bouquet orange Apponyi pattern jardinière of tapering cylindrical form with side handles, marks to the base, 21 x 27.5cm	£100-£150
114	Herend jardinière of tapering cylindrical form with side handles decorated with flowers, berries and leaves, marks to the base, 21 x 27.5cm	£80-£120
115	Herend Chinese bouquet green Apponyi pattern plant pot holder, a bonbon dish in the form of a leaf and a heart shaped covered box, marks to the bases, tallest 14.5cm (h)	£100-£150
116	A quantity of Herend to include bonbon dishes, condiments, a toothpick holder, an octagonal dish, marks to the bases, (14)	£120-£180
117	A quantity of continental porcelain to include Meissen, Crown Naples and Limoges (8)	£100-£150
118	A continental porcelain plant pot holder of tapering cylindrical form, crossed sword marks to the side, 11.5 x 18.5cm	£40-£60
119	Dresden plant pot holder decorated with flowers and leaves, marks to the base, 18 x 23cm	£40-£60
120	Dresden baluster form pot pourri holder and cover decorated with applied flowers and leaves and mask side handles, A/F, to include hardwood stand, 30cm (h)	£80-£120
121	Colebrookdale by Coleport bocage Rococo style teapot with scroll handle on shaped rectangular stand 17cm (h)	£30-£50

Lot No.	Description	Estimate
122	Colebrookdale by Coleport bocage chamber stick and covered vase, tallest 13.5cm (h)	£30-£50
123	Colebrookdale by Coleport globular vase with applied floral decoration, 14.5cm	£30-£50
124	Colebrookdale by Coleport cornucopia flower pot holder with applied flowers on raised shaped oval base, 16cm (h)	£40-£60
125	Limoges porcelain twin handled centrepiece bowl of oval form with gilt metal mount and raised on four feet, floral hand-painted, marks to the base, 27.5cm (w)	£40-£60
126	A cased Lenox Athenian porcelain vase, 24cm (h) and a pierced Lennox pedestal centrepiece bowl with gilded decoration, 16cm (h)	£30-£50
127	Krautheim and Adelberg Bavaria Germany floral and foliate decorated onion shape floor vase, 51cm (h)	£60-£90
128	Krautheim and Adelberg Bavaria Germany rose decorated vase with gold detail, 36cm (h)	£40-£60
129	Krautheim and Adelberg Bavaria Germany floral decorated floor vase in blue and yellow, with blue bands to rim and base, 45cm (h)	£60-£90
130	Royal Standard Biarritz plate decorated with boats and with a curved braided handle, marks to the base, 21.5 x 27cm	£30-£50
131	Four Royal Worcester cabinet cups of varying design, marks to the bases	£60-£90
132	A quantity of porcelain cabinet cups and saucers of various form and shape to include Shelley, Minton, Doulton and Dresden (14 pairs)	£50-£80
133	A rare Clarice cliff seated figural pen holder, circa 1930, marks to the base, 15 x 18 x 11cm	£200-£300
134	A Clarice Cliff Harvest fruit bowl, of bellied form with clustered fruits side handles, marks to the base, 29 x 9cm	£50-£80
135	A Clarice Cliff Royal Staffordshire Toby jug style mug, marks to the base, 10cm (h)	£30-£50
136	A Losolware Sylvan oversize hand painted teacup and saucer, circa 1930, marks to the base, 10cm (h)	£30-£50
137	A Lingardware 1930s novelty teapot in the form of Old Mother Hubbard and her cottage, marks to the base, 17 x 23 x 10cm	£30-£50
138	A hand painted Grays Pottery charger, circa 1930 decorated with leaves and flowers, marks to the base, 36.5cm (d)	£30-£50

Lot No.	Description	Estimate
139	A Charlotte Rhead tube line decorated charger with stylised berries, leaves and flowers, marks to the base, 35.5cm (d)	£60-£90
140	Wedgwood Runnymede fruit bowl and a Chinese floral decorated fruit bowl	£30-£50
141	An early 20th century jardinière of tapering cylindrical form on three leaf supports, the sides decorated with leaves and flowers in the oriental style 32.5cm (h)	£40-£60
142	Two Wedgwood Jasperware plant pot holders, marks to the bases, tallest 23cm (h)	£50-£80
143	Wedgwood Jasperware tobacco jar and cover and a powder dish and cover, marks to the bases, 12,5cm (h)	£30-£50
144	A quantity of Wedgwood blue Jasperware to include vases, covered boxes, a clock, a table bell, a jug and a taper stick (20)	£100-£150
145	A Victorian Doulton Lambethware fruit bowl with hallmarked silver collar, London 1880, a pair of Mappin and Webb salad servers with ceramic handles and a silver plated grape shears	£70-£100
146	A pair of Doulton Lambethware ewers decorated by Nellie Gardett with scroll handles on raised circular bases, marks to the bases, 21.5cm (h)	£40-£60
147	A Doulton Lambethware baluster vase decorated by Louise Edwards, marks to the base, 24.5cm (h)	£60-£90
148	A Doulton Lambethware vase with trumpet neck, marks to the base, 20cm (h)	£30-£50
149	A quantity of Victorian Doulton ceramics to include three jugs and two mugs, tallest 18.5cm (h) (5)	£80-£120
150	Majolica table centrepiece in the form of four putti carrying a basket on a rectangular base, marks to the base, 23 x 31 x 17cm	£70-£100
151	An Israeli 30th Anniversary 1978 Plate of Peace designed by Assaf Berg for Naaman, numbered 1047, 25cm (d)	£30-£50
152	A quantity of porcelain to include a Vienna plate, a Crown Devon fruit dish, a blue and white Delft vase and plate (4)	£40-£60
153	A quantity of porcelain to include cups, saucers and a pin dish (5)	£30-£50
154	A continental porcelain cake stand on raised circular base, marks to the base, 23cm (d)	£30-£50
155	A quantity of Villeroy and Boch collectors plates, marks to the bases (8)	£40-£60

Lot No.	Description	Estimate
156	Seventeen hand painted Haviland Limoges collector plates to include Wilhelm Buehler birds, most boxed	£40-£60
157	Ten hand painted collector plates to include Wedgwood, Royal Crown Derby and Royal Worcester, in original boxes	£30-£50
158	Twenty five hand painted collector plates comprising D'Arceau Limoges, Kaiser, Zolan and Tirschenreuth, most boxed	£80-£120
159	A pair of 19th century Volkstedt Rudolstadt porcelain figurines of a seated lady having her hair and feet attended to by valets, marks to the bases, 17 x 20cm	£150-£200
160	A quantity of Royal Worcester figurines from the months of the year range, including March, September, May, August, January, April, and February, marks to the bases, tallest 16cm (h) (7)	£200-£300
161	A quantity of Royal Worcester figurines from the countries of the world range to include Holland 3074, Ireland 3178, and Burma 3068, mark to the bases, 15cm (h) (3)	£60-£90
162	A quantity of Royal Worcester figurines from the days of the week range to include Mondays child is fair of face 3257, Mondays child is fair of face 3519, Tuesdays child is full of Grace 3258, Wednesdays child knows little woe 3521, Wednesdays child knows little woe 3259, Thursdays child has far to go 3522, Fridays child is loving and giving 3253, Fridays child is loving and giving 3261, two Saturdays child works hard for a living 3262, the Sabbath child 3158, marks to the bases, tallest 22cm (h) (11)	£400-£600
163	Five Royal Worcester figurines to include Mischief 2914, Little Miss Moffat 3301, Woodland dance 3076, Polly put the kettle on 3303 and the Sabbath child 3256, marks to the bases, tallest 15cm (h)	£100-£150
164	Rori Capodimonte figurine of a boy fishing seated on a tree stump with a dog, signed to the base, 27cm (h)	£100-£150
165	Rori Capodimonte figural group of a girl reading on a bench next to a gentleman of the road with a dog, signed to the base, 25cm (h)	£100-£150
166	Herend figurine of a bird and a branch with flowers and leaves, marks to the base, 10cm (h)	£30-£50

Lot No.	Description	Estimate
Glass		
167	An early 20th century three bottle Tantalus, to include three cut glass decanters with drop stoppers	£100-£150
168	Baccarat glass ships decanter with drop stopper, signed to the base, 27cm (h)	£40-£60
169	Orrefors shaped rectangular decanter with drop stopper, marks etched to the base, 24cm (h)	£60-£90
170	A continental silver plated, glass and porcelain cutaway claret jug decorated in the oriental style with leaf capped double scroll handle, 30cm (h)	£40-£60
171	A French decanter with drop stopper decorated with white flowers and a large bowl and cover with matching white floral decoration, decanter 23.5cm (h)	£60-£90
172	A pair of Bohemian Opaline and ruby glass vases with floral swags and leaves on raised circular bases, 32cm (h)	£70-£100
173	A pair of marble based glass cornucopia vases with dolphin mounts, 18 x 16cm	£60-£90
174	A quantity of Venetian wine glasses of various form and size all on circular spreading bases, 24.5cm (h) (11)	£80-£120
175	A set of six Watford Crystal champagne flutes in original packaging and six matching wine glasses (12)	£40-£60
176	A set of eleven Saint Louis Massenet crystal champagne flutes of customary form, signed to the bases	£150-£200
177	Saint Louis crystal punch bowl and eight matching crystal glasses, signed to the bases, in original packaging	£150-£200
178	1950s glass jug and matching glasses with gilded borders on circular spreading bases (19)	£50-£80
179	A set of Art Deco glass fruit plates and a matching platter (6)	£40-£60
180	Lalique circular dish with stepped sides, etched to the base, 15cm (d)	£50-£80
181	A Lalique style frosted blue glass circular table centre piece decorated with flowers and leaves on three floral supports, 34cm (d)	£80-£120
182	Osborn globular turquoise glass vase engraved with flowers and leaves, 12.5 cm	£30-£50
183	A set of six late Victorian toasting glasses on circular spreading bases	£40-£60

Lot No.	Description	Estimate
184	Three graduated Villeroy and Boch Lilian pattern shell shape cut glass bowls, 23cm, 18cm and 12cm (w)	£40-£60
185	A cut glass crystal vase 33cm (h) a glass pedestal cake stand and an oval fruit bowl (3)	£40-£60
186	A Baccarat crystal glass bowl, etched mark to the base and two other crystal glass bowls (3) one A/F	£40-£60
187	A quantity of crystal to include a Hofbauer glass bowl etched with owls 22cm (d) and two other cut glass crystal bowls (3)	£30-£50

Oriental Porcelain & Colletables

188	A 19th century Chinese porcelain fish bowl decorated with fish, flowers and leaves, TongZhi six character mark to the base, 22 x 33cm	£100-£150
189	A Chinese blue and white octagonal Meipin vase decorated with a dragon chasing a flaming pearl, bats, flowers and leaves, 29.5cm (h)	£80-£120
190	A Chinese blue and white vase decorated with warriors on horseback, 18cm (h)	£30-£50
191	A cloisonné vase and cover with Dog of Foe finial on carved hardwood stand, 13.5cm (h)	£30-£50
192	A Chinese white metal two handled oval bowl, chased with flowers and leaves, 13 x 13 x 4cm	£40-£60
193	A Chinese gilt metal figurine of Buddha seated on a shaped oval base, 10.5 x 8 x 5.5cm	£150-£200
194	Two Tibetan metal figurines of Buddhas on raised oval bases, tallest 6cm (h)	£80-£120
195	A Tibetan bronze ritual dagger and stand, 18cm (h)	£40-£60
196	A Tibetan bronze double Dorje (Visha-Vajra) 7 x 7cm	£40-£60
197	A Tibetan gilt metal double sided pendant chased and painted with deities, 7.5 x 5cm	£30-£50
198	A Chinese square shaped bronze seal, 4.5 x 5.5 x 5.5cm	£30-£50
199	A Tibetan silk painted Tanka, decorated with Buddhas and a central geometric design, 109 x 79.5cm	£70-£100
200	A Japanese Okimono bronze figurine of a bulldog, marks to the base, 6 x 8.5 x	£40-£60
201	A Japanese Okimono bronze figurine of a seated dog, 5 x 4 x 3cm	£30-£50

Lot No.	Description	Estimate
202	A Japanese Okimono bronze figurine of Snoopy the dog, 5 x 3.5 x 2.5cm	£30-£50
203	A Japanese Okimono bronze figurine of a crab, marks to the base, 4.5 x 11.5 x	£40-£60
204	A Chinese carved soapstone seal in the form of a dog of foe, 8.5cm (h)	£40-£60

Collectables

205	A Victorian white cast iron Cathedral heater of pierced octagonal form with two carrying handles, the hinged doors open to reveal an electric light fitting, 67cm (h)	£50-£80
206	A Victorian rectangular pierced cast iron Cathedral heater on four outswept legs, A/F, 55cm (h)	£30-£50
207	A brass baluster form jardinière with lion mask and ring side handles on tripod base, 54 x 43cm	£60-£90
208	A quantity of copper to include a tea urn, a kettle and two jugs, tallest 40cm (h) (4)	£50-£80
209	A quantity of brass to include two chestnut roasters, a sauce pan, a strainer and a teapot (5)	£40-£60
210	A quantity of brass and copper to include a tea kettle on stand, a skillet, a fruit basket, a chestnut roaster and wood and brass book slide (5)	£50-£80
211	An early 20th century wrought iron and copper cake stand with circular brass shelves, 89cm (h)	£30-£50
212	A late Victorian brass oil lamp to include glass shade and chimney, 58cm (h)	£40-£60
213	A pair of Victorian brass and glass oil lamps on leaf chased shaped square base with detachable glass chimneys, 52cm (h)	£100-£150
214	A Victorian miniature apprentice piece upholstered sofa all on four turned supports, 27 x 37 x 15cm	£60-£90
215	A continental circular pierced gilt metal fruit stand on raised base with an inset painted image of a Gothic building to the centre, 10 x 20.5cm	£50-£80
216	A gilt metal figurine of a seated Putti on raised circular marble base, 9cm (h)	£30-£50
217	Gaudez spelter figurine of a postman on a circular base, signed and dated to base 1886, 70cm (h)	£70-£100

Lot No.	Description	Estimate
218	A pair of rectangular framed Art Nouveau style ceramic panels with tube line decoration depicting ladies holding flowers, 35 x 20.5cm	£30-£50
219	Three African carved wood masks, two with rams horns, the largest 36cm (h)	£40-£60
220	A quantity of carved African curios to include figurines, masks and busts (8)	£40-£60
221	James Tandy verdite sculpture titled Shona Fain with COA, 22 x 13 x 13cm	£200-£300
222	A large South African bust of a lady made of verdite stone and other coloured stones, 38 x 22 x 14cm	£100-£150
223	Venus Victrix composition figurine reclining on her chaise longue mounted on a resin base, 21.5 x 36 x 8cm	£40-£60
224	A pair of early 20th century brass knopped stem table candlesticks on raised square bases, 30cm (h)	£30-£50
225	A pair of brass pierced and twisted stem table candlesticks on raised circular bases, 31cm (h)	£30-£50
226	A pair of early 20th century brass knopped stem table candlesticks on raised square bases, 27cm (h)	£30-£50
227	A pair of brass and wooden barley twist table candlesticks on raised circular bases, 34cm (h)	£30-£50
228	A late 19th century oak and silver plated rectangular desk stand with two detachable inkwells, a central carrying handle, a single drawer on four bun feet and a silver plated propelling pencil, 17 x 30.5 x 18.5cm	£70-£100
229	A Victorian shaped rectangular brass and ceramic desk stand, scroll pierced and chased with masks and mythological beasts, the ceramic inkwells with hinged covers, 19 x 28 x 17cm	£60-£90
230	A Victorian brass and glass square inkstand with pierced borders, detachable glass inkwell on four bracket feet, 11 x 18 x 18cm	£30-£50
231	A brass inkwell shaped square, chased with scrolls and leaves the cylindrical well with porcelain liner, circa 1900, 9 x 9.5 x 9.5cm	£30-£50
232	A Victorian beaten brass fireplace fender, corners decorated with applied florets on hoof feet, 135 x 35cm	£80-£120
233	A Victorian sarcophagus shaped tea caddy the hinged cover with mother of pearl inlays opening to reveal two covered tea canisters and a cut glass mixing bowl, 16.5 x 30 x 16cm	£80-£120

Lot No.	Description	Estimate
234	An Edwardian rectangular mahogany tea caddy with inlaid satinwood hinged cover, 15 x 30.5 x 15cm	£50-£80
235	An early 20th century Singer sewing machine in fitted wooden case with arched top pull off cover	£30-£50
236	An early 20th century Singer sewing machine in fitted wooden case with rectangular pull off cover	£30-£50
237	An early 20th century stick telephone of customary form on raised circular base (converted for modern use)	£40-£60
238	C. Plath of Hamburg sextant of customary form in fitted case, retailed by Thomas Foulks to include COA	£200-£300
239	Steiner Commander V binoculars in fitted case	£100-£150
240	A three draw brass telescope of customary form	£30-£50
241	A mid 20th century one armed bandit by Beromat, 73 x 50 x 20cm	£150-£200
242	A mid 20th century Penny Arcade game in rectangular glazed wooden case, 82.5 x 55.5 x 22cm	£150-£200
243	An Edwardian rectangular oak cased smokers cabinet, three drawers with brass handles and two hinged glazed doors all on bracket feet, 47 x 33 x 20.5cm	£60-£90
244	An antique brass wheel cutting machine to include accessories in fitted case	£80-£120
245	J. Casartelli and Sons brass thread counter with viewer in original case	£40-£60
246	Parker 75 gold plated fountain pen with 14ct gold nib in original packaging	£50-£80
247	Two Conway Stewart fountain pens with 14ct gold nibs and a Parker fountain pen with 14ct gold nib	£30-£50
248	Caran d'Ache gold plated ballpoint pen in fitted case and a Cross white metal and gilt ballpoint pen in fitted case	£60-£90
249	Three fishing reels of varying style to include a Mitchell graphite spool and a Shimano XT-7	£40-£60
250	A glazed reversible framed set of cigarette cards for Straight Line Caricatures by John Player and Sons (50 cards)	£30-£50
251	Two Victorian leather bound photograph albums	£40-£60
252	Two framed miniatures of ladies in early 19th century attire	£60-£90
253	S. Launer and Co. ladies black leather handbag with original packaging and cloth cover By Appointment to H.M The Queen QEII to include leather polish	£500-£800

Lot No.	Description	Estimate
254	S. Launer and Co. ladies blue leather handbag By Appointment to H.M The Queen QEII	£500-£800
255	S. Launer and Co. ladies red leather handbag By Appointment to H.M The Queen QEII	£300-£500
256	Gucci white leather ladies handbag with gilded detail to include cloth cover, A/F	£200-£300
257	A vintage bottle of Jean Patou Paris Moment Supreme Parfum-Cologne in sealed packaging	£40-£60
258	A quantity of diecast cars, trucks and vans to include Matchbox Models of Yesteryear (44)	£30-£50
259	WWI military medals attributed to 125743 Pte W.J. Millard R.A.M.C. to include Great War for Civilisation 1914-1919 and George V 1914-1918 medals in original packaging	£30-£50
260	A WWII corporals army uniform to include accessories and documentation	£80-£120
261	WWII bayonet of customary form with accompanying scabbard	£30-£50
262	An Edwardian military dress sword in scabbard	£80-£120
263	A 1922 five hundred Reichsmark share certificate for the Westafrikanische Pflanzungs-Gesellschaft, also known as Victoria AG Berlin, the largest plantation company in Cameroon during German colonial rule	£30-£50
264	A quantity of Israel Day of Issue covers 1957-1982 (23)	£30-£50
265	A quantity of Royal Mail Mint Definitive Stamps and First Day Covers (33)	£30-£50
266	A quantity of silver coins to include proof Piedfort £1 coin 1983, a silver proof £1 coin 1986 and a 1986 silver medal commemorating the marriage of Prince Andrew and Sarah Ferguson (3)	£30-£50
267	Three silver proof £2 coins to include Charles and Diana wedding 1981, end of WWII and 1986 Scotland Commonwealth Games, all boxed with paperwork	£60-£90
268	1922 silver American Peace dollar coin and a 1971 half dollar (2)	£30-£50
269	Israel 1967 silver Victory coin in original packaging with COA	£30-£50
270	1996 United Kingdom silver anniversary collection cased set to include COA	£30-£50

Lot No.	Description	Estimate
271	2008 Royal Mint UK Brilliant Uncirculated coin collection in original presentation packaging	£30-£50
272	Twelve Royal Mint proof year sets in original leather bound folders all with COAs to include two 1983, 1984, 1985, 1986, 1987, 1989, 1990, 1991, 1992, 1993, and 1994	£70-£100
273	Sixteen Royal Mint proof coin sets of Great Britain and Northern Ireland all in original packaging to include 1970, 1971, 1972, 1973, 1974, 1975, 1976, 1977, 1978, 1979, 1980, 1981 and 1982	£50-£80
274	A quantity of USA coins to include half dollars, quarters, dimes and cents	£30-£50
275	Six 1993 £5 commemorative coins 40th anniversary QE II Coronation and a £5 Queen Mother 90th birthday coin (7)	£40-£60
276	A quantity of nineteen commemorative coins to include Charles and Diana 1981 wedding crowns and QE II 1977 Silver Jubilee crowns	£30-£50
277	A quantity of foreign coins to include European, African and Asian, Iran 200 Rial and 10 Deutsche Mark notes	£30-£50
278	A quantity of assorted UK currency coins and two one pound bank notes	£30-£50

Champagne, Wine, Cognac & Whisky

279	Moet and Chandon 2008 Grand Vintage Brut champagne 75cl	£50-£80
280	Veuve Clicquot 2008 vintage champagne 75cl	£50-£80
281	Veuve Clicquot 2004 vintage champagne 75cl	£50-£80
282	Pol Roger 2009 vintage champagne 75cl	£50-£80
283	Pol Roger Sir Winston Churchill 2013 vintage champagne 75cl in original fitted packaging	£80-£120
284	Pol Roger Sir Winston Churchill 2013 vintage champagne 75cl in original fitted packaging	£80-£120
285	Bollinger La Grande Annee 2002 Brut champagne 75cl	£70-£100
286	1982 Taittinger Collection Andre Masson Special Edition vintage champagne and Pommery NV champagne both in original packaging	£100-£150
287	Chateau de Beaucastel 2011 Chateauneuf du Pape six 75cl bottles	£120-£180
288	Chateau de Beaucastel 2005 Chateauneuf du Pape two 75cl bottles	£80-£120

Lot No.	Description	Estimate
289	Martell 1970s bottling cognac 70% proof, 70cl	£80-£120
290	Bruichladdich Black Art 1990 23 year old edition 04.01 unpeated Islay single malt Scotch Whisky 49.2% vol, 70cl in original packaging	£400-£600
291	Old Pulteney 25 year old single malt Scotch Whisky 70cl in original packaging	£400-£600
292	Nikka 17 year old Taketsuru pure malt whisky 43% vol. 70cl in original packaging	£250-£350
293	Glenfiddich Classic Single Malt Pure Malt Very Rare Scotch Whisky limited edition bottle no. E 35439, matured in oak cask, 70cl bottle in original packaging	£80-£120
294	Three bottles of single malt Scotch whisky to include Glenlivet 12 year old 1 litre and two Glenfiddich Special Reserve 1.125 litre bottles, all in original packaging	£100-£150

Clocks & Watches

295	An Art Deco peach glass mirror clock with gilded figurine of a maiden supporting a bowl, C 1925, 35 x 41.5 x 16cm A/F	£300-£500
296	A 19th century French gilt metal mantel clock with porcelain panels surmounted by a female figure on four leaf chased scroll supports to include pendulum, 39 x 36 x 17cm	£80-£120
297	IWC 18ct white gold ladies bracelet wristwatch, approx total weight 43.7g	£1500-£2000
298	Jules Jurgensen 14ct yellow gold ladies wristwatch with articulated 14ct gold bracelet to include original packaging, approx total weight 15.6g	£500-£800
299	Jaeger LeCoultre 18ct gold ladies wristwatch with white enamel dial and Roman numerals on replacement leather strap	£400-£600
300	Longines stainless steel ladies bracelet wristwatch in original packaging	£100-£150
301	Accurist 9ct gold ladies wristwatch on an articulated 9ct gold bracelet, approx total weight 13.3g	£150-£200
302	18ct white gold ladies wristwatch on a leather strap and an Omega ladies wristwatch on a replacement expanding bracelet	£120-£180
303	9ct yellow gold open face pocket watch with Arabic numerals and subsidiary seconds dial	£150-£200
304	A Victorian gold open face pocket watch in fitted case to include key and a hallmarked silver pocket watch	£80-£120

Lot No.	Description	Estimate
305	Omega open face pocket watch with Arabic numerals and subsidiary seconds dial, to include fitted case	£50-£80
306	9ct gold ladies open face pocket watch and a hallmarked silver open face pocket watch	£100-£150
307	Jaeger LeCoultre WWII military pocket watch, black dial with Arabic numerals, A/F	£70-£100

Jewellery

308	A quantity of silver and costume jewellery to include necklaces, brooches, pendants, bracelets, watches and an Archibald Knox style casket	£100-£150
309	A quantity of costume jewellery to include wristwatches, necklaces and earrings and a Chinese composition puzzle ball	£30-£50
310	A quantity of silver jewellery including a pair of Caithness millefiori cufflinks, Siam Niello brooches and necklaces	£40-£60
311	A quantity of costume jewellery to include a hallmarked silver bangle, an eternity ring and two pendants	£40-£60
312	9ct gold and cameo pendant brooch	£30-£50
313	A single strand pearl necklace with 9ct gold and garnet clasp	£70-£100
314	A single strand pearl necklace with a 9ct gold and pearl clasp and an antique paste necklace with matching earrings	£50-£80
315	A single strand cultured pearl necklace with 9ct gold clasp and a pair of matching stud earrings	£100-£150
316	14ct yellow gold, emerald and diamond bracelet to include certificate, approx total weight 12.0g	£1500-£2000
317	9ct yellow gold, sapphire and diamond bracelet, approx total weight 9.4g	£250-£350
318	14ct yellow gold, diamond and sapphire pendant on a 9ct gold chain, approx total weight 6.2g	£120-£180
319	A pair of 14ct yellow gold, sapphire and diamond earrings, approx total weight 3.4g	£150-£200
320	Platinum and diamond pendant set with old cut diamonds, approx total weight 5.2g	£1000-£1500
321	9ct yellow gold rope twist necklace with a 9ct gold and aquamarine pendant and a 9ct gold and citrine brooch, approx total weight 6.1g	£80-£120
322	9ct yellow gold locket on a 9ct gold chain and a rose gold pendant	£120-£180

Lot No.	Description	Estimate
323	Platinum diamond solitaire ring set with oval cut diamond, approx 1ct diamond, colour D clarity S12, to include copy GIA certificate	£1500-£2200
324	18ct yellow gold and diamond dress ring, approx total weight 5.6g	£1000-£1500
325	18ct yellow gold five stone diamond ring, approx total weight 3.3g	£180-£280
326	9ct white gold and diamond solitaire ring, approx total weight 1.7g	£100-£150
327	18ct yellow gold diamond solitaire ring, approx total weight 2.4g	£250-£350
328	9ct yellow gold dress ring set with a blue stone, approx total weight 3.1g	£50-£80
329	9ct white gold eternity diamond ring, approx total weight 2.1g	£80-£120
330	9ct gold and garnet cluster ring, approx total weight 4.1g	£60-£90
331	9ct gold and garnet cluster ring, approx total weight 4.1g	£60-£90
332	9ct gold and garnet cluster ring, approx total weight 3.0g	£50-£80
333	9ct gold and smokey topaz dress ring, approx total weight 2.8g	£50-£80
334	9ct gold ring set with a semi-precious stone, approx total weight 3.6g	£40-£60
335	9ct gold and citrine dress ring, approx total weight 3.2g	£50-£80
336	9ct gold and pear shaped semi-precious stone cocktail ring, approx total weight 2.8g	£40-£80
337	22ct yellow gold wedding band, approx total weight 2.7g	£120-£180
338	Middle Eastern gold puzzle ring stamped 750, approx total weight 8.6g	£300-£500
339	Two 9ct gold rings, approx total weight 4.6g	£80-£120
340	Two 9ct gold rings set with coloured stones, approx total weight 3.6g	£80-£120
341	9ct gold circular brooch set with pearls and aquamarines in a floral design, approx total weight 6.7g	£140-£200
342	9ct gold gatelink bracelet, approx total weight 16.7g	£250-£350
343	9ct gold gatelink bracelet, approx total weight 15.9g	£250-£350
344	18ct yellow gold rope twist necklace, approx total weight 11.2g	£400-£600
345	18ct yellow gold fancy link bracelet, approx total weight 7.1g	£250-£350

Lot No.	Description	Estimate
346	1887 Queen Victoria half Sovereign set in a 9ct gold pendant on a 9ct gold chain, approx total weight 8.6g	£250-£350
347	1912 half Sovereign set in a 9ct gold pendant on a 9ct gold chain, approx total weight 7.5g	£220-£320
348	1894 Queen Victoria Sovereign	£350-£550
349	1895 Queen Victoria Sovereign	£350-£550
350	1898 Queen Victoria Sovereign	£350-£550
351	1898 Queen Victoria Sovereign	£350-£550
352	1899 Queen Victoria Sovereign	£350-£550
353	1900 Queen Victoria Sovereign	£350-£550
354	1980 proof QEII Sovereign in fitted case to include COA	£400-£600
355	1979 QEII Sovereign in fitted case	£380-£580
356	1962 Two Rand gold South African coin, approx total weight 7.9g	£350-£450
357	1962 Two Rand gold South African coin, approx total weight 7.9g	£350-£450
358	1915 Twenty Corona gold coin, approx total weight 6.7g	£250-£350
359	1980 Twenty Franc gold coin, approx total weight 6.6g	£250-£350
360	1933 gold Dutch coin with applied links, approx total weight 6.8g	£300-£500
361	1915 Hungarian gold coin, approx total weight 3.4g	£140-£200
362	1915 Hungarian gold coin, approx total weight 3.4g	£140-£200
363	1915 Hungarian gold coin, approx total weight 3.4g	£140-£200
364	1912 Ten Corona gold coin, approx total weight 3.3g	£120-£180
365	1909 Edward VII half Sovereign, approx total weight 3.9g	£150-£200
366	Israeli Masada Gold Medal 1965 22ct gold, approx total weight 15.0g, in original sleeve	£600-£900
367	A 19th century gold rectangular engine turned snuff box with hinged cover and bar thumb piece, tested 14ct, approx total weight 66.6g	£2000-£3000

Silver & Silver Plate

368	A continental white metal engine turned snuff box with hinged cover	£50-£80
369	A pair of hallmarked silver table candlesticks of knopped cylindrical form chased with bands of scrolls and leaves, London 1923, 27.5cm (h)	£150-£200

Lot No.	Description	Estimate
370	An Israeli white metal Menorah with articulated arms on raised circular base, stamped Sterling, 32cm (h)	£300-£500
371	A continental white metal three light candelabrum of panelled scroll form on raised oval base	£100-£150
372	Seven hallmarked silver photograph frames of various form and size, tallest 30cm (h)	£180-£280
373	Six hallmarked silver photograph frames of various form and size, tallest 29.5cm (h)	£180-£280
374	Four hallmarked silver photograph frames of various form and shape, A/F, tallest 33.5cm (h)	£100-£150
375	A hallmarked silver photograph frame, shaped rectangular chased with putti to the sides, 23.5cm (h)	£30-£50
376	A hallmarked silver mug of customary form, Birmingham 1932, approx total weight 384g	£150-£200
377	A pair of Victorian cased hallmarked silver gilt fruit serving spoons with twisted stems and figural terminals, London 1883	£80-£120



Lot 377

Lot No.	Description	Estimate
378	A hallmarked silver rectangular ink stand with pierced gallery scroll handles on four bun feet, Birmingham 1902, the detachable glass inkwells, Birmingham 1903	£100-£150
379	A white metal oval pierced bowl with foliate, fruit and floral decoration, 19cm (w)	£180-£280
380	A quantity of hallmarked silver to include sugar shaker, salt and pepper set, with swirl bodies on scroll feet, the sugar shaker 15cm (h) approx total weight 245g (3)	£120-£180
381	A 19th century Russian silver gilt salt of circular pedestal form, engraved with Stars of David, assay marks for Savinsky Moscow 1876, Moscow city mark and 84 Zolotniki standard, Cyrillic maker's mark SI, possibly Ikonnikov	£60-£90
382	A Turkish silver Kiddush cup, engraved engine turned bands, early Tughra mark of the Sultan and Sah Standard Mark, 12cm (h) approx total weight 119g	£60-£90
383	A cut glass trumpet flower vase mounted on a circular hallmarked silver base, Birmingham 1973, 28cm (h)	£30-£50
384	A hallmarked silver heart shaped dressing table box with hinged cover, a hallmarked silver rectangular box with hinged cover and a cut glass dressing table bottle with hallmarked silver cover (3)	£100-£150
385	A hallmarked silver Kiddush cup, a hallmarked silver napkin ring and a white metal Judaica spice box on raised circular base, approx total weight 122g	£50-£80
386	A quantity of hallmarked silver to include a Kiddush cup, a pin dish, a napkin ring and a heart shaped photograph frame, approx total weight of weighable silver 108g (4)	£50-£80
387	A hallmarked silver sugar sifter of panel form on raised octagonal base, Sheffield 1935, approx total weight 157g	£70-£100
388	An Israeli white metal salt, pepper and cocktail stick holder and a Russian white metal dish stamped Cyrillic NS, possibly Nikolai Strulev Moscow 1883-1908 (2)	£40-£60
389	A cased hallmarked silver Mappin and Webb Christening egg cup, a pair of white metal rose embossed tongs and a figurine of a Japanese lady	£60-£90
390	Four continental white metal pierced and chased nut and bonbon dishes of various shape and form	£150-£200

Lot No.	Description	Estimate
391	Six white metal cylindrical finger bowls with chased rims	£400-£600
392	A continental white metal stem vase and a pair of white metal cake tongs	£40-£60
393	A cased hallmarked silver meat skewer/ letter opener, Sheffield 1977, approx total weight 110g	£50-£80
394	A Mappin and Webb hallmarked silver Armada dish, London 1960, approx total weight 130g	£60-£90
395	A pair of dwarf silver candlesticks, London 1981, 7cm (h)	£40-£60
396	Irish hallmarked silver sauce boat with scroll handle on three paw feet, Dublin 1907, approx total weight 112g	£60-£90
397	A Victorian hallmarked silver cream jug, London 1885 and a hallmarked silver cream jug, approx total weight 133g	£60-£90
398	A quantity of hallmarked silver to include a bonbon dish, a pepperette and a sauce boat A/F, approx total weight 167g	£80-£120
399	A continental white metal fiddle pattern soup ladle	£70-£100
400	A continental white metal soup ladle with scroll terminal and a circular bowl	£80-£120
401	A quantity of white metal to include a Kiddush cup, a goblet and two vases (4)	£70-£100
402	A quantity of continental white metal to include cake slices, two pickle forks, a spoon and a pair of tongs	£100-£150
403	A hallmarked silver five piece condiment set in fitted case, Birmingham 1934 and a pair of shell shaped salts with two condiment spoons, Birmingham 1903, approx total weight of silver 135g	£70-£100
404	A cased hallmarked set of silver tea implements to include six teaspoon, a sifter spoon, a pair of caddy spoons and a pair of tongs, Birmingham 1910, approx total weight of silver 146g	£70-£100
405	Two cased sets of silver gilt and enamel coffee spoons, Birmingham 1979	£50-£80
406	Two cased sets of six Mappin and Webb hallmarked silver coffee spoons, Sheffield 1960 and Sheffield 1923	£50-£80
407	A cased set of six Norwegian yellow metal and enamel coffee spoons	£40-£60
408	A quantity of hallmarked silver to include cased butter knives, teaspoons, sugar tongs and white metal grape scissors	£80-£120
409	A cased set of silver gilt coffee spoons, Sheffield 1957 by Edward Viner	£30-£50

Lot No.	Description	Estimate
410	A quantity of hallmarked silver to include a sugar shaker, napkin rings, a circular box, dressing table bottle covers and a Victorian silver coin in a pendant setting, approx total weight 240g (11)	£100-£150
411	A quantity of hallmarked silver to include a mug, a pair of napkin rings, an egg cup and a quantity of spoons, approx total weight of weighable silver 168g	£60-£90
412	A quantity of hallmarked silver to include a Vesta case, three spoons, a pickle fork, two thimbles, a pocket watch and a pocket watch case (9)	£70-£100
413	A set of six Mexican white metal drinking straws	£30-£50
414	Two hallmarked silver vesta cases and a J.W. Benson hallmarked silver open face pocket watch with white enamel dial, Roman numerals and subsidiary second dial, London 1937	£60-£90
415	A quantity of continental white metal to include a cigarette box with cedar wood lining, two pill boxes, two napkin rings, a cheroot holder and a seal (7)	£70-£100
416	Two Israeli white metal Judaica figurines, marks to the bases	£40-£60
417	A hallmarked silver port bottle label and a cast white metal figurine of a pig bottle stopper	£30-£50
418	A three tier silver plated Passover Seder Kaarah plate of customary form on three stylised leaf supports with cloth cover to the sides, 32cm (d)	£70-£100
419	A three piece silver plated teaset and a silver plated two handled tray	£50-£80
420	A canteen of silver plated flatware for six place settings with additional pieces to include fish eaters	£60-£90
421	Kings pattern silver plated flatware to include fish eaters, dessert spoons and forks, coffee and teaspoons, serving spoon and forks	£40-£60
422	A quantity of silver plated flatware to include knives, forks, spoons, soup spoons and dessert eaters	£70-£100
423	A quantity of photograph frames of various form, shape and size, the largest 31cm (h) (9)	£40-£60
424	A quantity of silver plate to include a two branch candelabrum, three trays and an ice bucket (5)	£30-£50
425	A quantity of silver plate to include trays, a Judaica Kiddush cup stand, coasters and flatware	£70-£100

Notes

We are pleased to offer online bidding via
www.easyliveauction.com and www.the-saleroom.com
The live auction will allow you watch the sale as it happens
in real time and listen to the auctioneer via a live audio feed.

To view the catalogue and register for the sale please logon to
www.the-saleroom.com/busheyauctions
or www.easyliveauction.com/busheyauctions
Please note our online bidding terms and conditions

In addition to this service we offer
absentee/commission and telephone bids
Please contact Richard or Linda for further information
020 8386 2552 or 07504 201202



the-saleroom.com

Valuation Days

Friday 21st and 28th March

9am to 5pm at our Watford showroom

Please call or email to book an appointment

or a home visit on any other day

NOW ACCEPTING ENTRIES

tel: 020 8386 2552

mobile: 07504 201202

e-mail: enquiries@busheyauctions.com

Future Auction Dates

24th April

19th June

Please check the website for confirmation

and viewing times

www.busheyauctions.com



Lot 188

BUSHEY Auctions

tel: 0208 386 2552

mobile: 07504 201202

email: enquiries@busheyauctions.com

visit our website

www.busheyauctions.com