

2-DAY PUBLIC ONLINE AUCTION

INSPECT ONSITE AND BID ONLINE

**OFFERS FOR
THE ENTIRE
PLANT
CONSIDERED**

AEROSTRUCTURES MANUFACTURER

ALATUS AEROSYSTEMS

**2-DAY TIMED ONLINE AUCTION: WEDNESDAY, APRIL 30
& THURSDAY MAY 1, STARTING AT 10:00 AM PDT EACH DAY**
2-DAY INSPECTION: MONDAY, APRIL 28 & TUESDAY, APRIL 29 FROM 9:00 AM TO 3:00 PM PDT
LOCATION: 9301 MASON AVENUE, CHATSWORTH, CA 91311

**CALL US
TODAY!
818.264.4232**



80" SPINDLE CENTERS



2025 REBUILT 2 AXIS HEAD



2012



2022

NEVER USED

(8) CINCINNATI 5 & 3 AXIS GANTRY MILLS UP TO 80" SPINDLE CENTERS, (2) CINCINNATI U5 5 AXIS RAIL TYPES, WILSON CNC BRIDGE MILL, CINCINNATI 20V 5 AXIS MILLS, GIDDINGS & LEWIS & WOTAN BORING MILLS, 2012 MAKINO A82M HMC, 2022 HAAS ST-45 & TAKASAWA TC-4 TURNING CENTERS, ANCA TGX TOOL & CUTTER GRINDER, MACHINE SHOP, INSPECTION MACHINES, SANDING BOOTHS, FORKLIFTS TO 9,000 LB CAPACITY, (2) FORD FLATBED TRUCKS, (2) FLATBED TRAILERS, SCISSOR LIFT, KAESER & GARDNER DENVER AIR COMPRESSORS TO 250 HP, MASSIVE TOOL CRIB, STORAGE CABINETS, MATERIAL RACKING, MAINTENANCE, METAL MATERIAL, FLOOR SWEEPERS, STORAGE CONTAINER & RELATED ITEMS



UNITED
ASSET SALES

ROY GAMITYAN, AUCTIONEER

OFFICE 818.264.4232 | ROY@UNITEDASSETSALES.COM

IN CONJUNCTION
WITH:



**INDUSTRIAL
MACHINE TOOLS, INC.**

www.IndustrialMachineTools.com
360-399-7674 | josh@industrialmachinetools.com

WWW.UNITEDASSETSALES.COM

2-DAY PUBLIC ONLINE AUCTION

INSPECT ONSITE AND BID ONLINE

AEROSTRUCTURES MANUFACTURER

2-DAY ONLINE AUCTION CLOSES:

WEDNESDAY, APRIL 30 & THURSDAY MAY 1
STARTING AT 10:00 AM PDT EACH DAY

2-DAY INSPECTION:

MONDAY, APRIL 28 & TUESDAY, APRIL 29
FROM 9:00 AM TO 3:00 PM PDT

INSPECTION LOCATION:

9301 MASON AVENUE, CHATSWORTH, CA 91311

TERMS OF PAYMENT:

NO DEBIT OR CREDIT CARDS! CASHIER'S CHECK,
BUSINESS CHECK WITH BANK LETTER OF
GUARANTEE, BANK WIRE TRANSFER.
FULL PAYMENT MUST BE MADE NO LATER
THAN 24 HOURS AFTER WINNING BID.

REMOVAL:

ALL ITEMS MUST BE REMOVED NO LATER
THAN FRIDAY, MAY 16, WITH THE EXCEPTION
OF LARGE MACHINES (CINCINNATI GANTRIES)
NO LATER THAN FRIDAY, MAY 30. NO EXCEPTIONS.
PREPPING, LOADING & TRUCKING IS THE
RESPONSIBILITY OF THE BUYER.

BUYER'S PREMIUM:

16% FOR ALL PURCHASES.

FOR COMPLETE SALE INFO: 818.264.4232
OR VISIT WWW.UNITEDASSETSALES.COM
EMAIL: ROY@UNITEDASSETSALES.COM

ONLINE BIDDING PROVIDED BY

BidSpotter



UNITED
ASSET SALES
ROY GAMITYAN, AUCTIONEER

WWW.UNITEDASSETSALES.COM

23945 Calabasas Rd., Ste. 209, Calabasas, CA 91302
Office 818.264.4232 | roy@unitedassetsales.com

ROY GAMITYAN, AUCTIONEER
CA Bond# 63388305

RAIL TYPE SINGLE SPINDLE 5 AXIS GANTRIES

CINCINNATI U5 5 AXIS RAIL TYPE
GANTRY, 2025 REBUILT 2 AXIS HEAD,
40 HP / 6000 RPM, XYZ TRAVELS:
636" X 144" X 48", A AXIS -100 / + 90
DEG, C AXIS 360 DEG., SIEMENS 840D
CNC, 60' X AXIS RAIL INCLUDED, S/N
QD00B01030007, (#4102)

CINCINNATI U5 5 AXIS RAIL TYPE
GANTRY, 40 HP / 6000 RPM, XYZ
TRAVELS: 636" X 144" X 48", A AXIS
-100 / + 90 DEG., C AXIS: 360 DEG,
SIEMENS ACRAMATIC A2100 CNC,
24' X AXIS RAIL INCLUDED,
S/N QD00B01010002, (#4101)
(84' X AXIS RAIL SHARED BETWEEN
4101 & 4102: 60' W/ 4102, 24' W/ 4101)



**2025 REBUILT
2 AXIS HEAD**

HORIZONTAL BORING MILLS

WOTAN, ALLEN BRADLEY 8200 CNC CONTROL, 4-AXIS,
44" X 55" B AXIS ROTARY TABLE, 30 HP / 1,600 RPM, 50
TAPER / POWER DRAW BAR, XYZ TRAVELS: 72" X 60" X 36",
S/N 50074, (#3101)

WOTAN B-130ST HORIZONTAL BORING MILL, 130MM SPINDLE,
50 TAPER POWER DRAW BAR, 14-1000 RPM, SONY (X, Y, Z,
W AXIS) & FAGOR (B AXIS) DRO, 60" X 67" ROTARY TABLE,
XYZW: 80" X 60" X 30" X 44", S/N 42100, (#3503)

WOTAN B-105-S HORIZONTAL BORING MILL, 105MM SPINDLE,
50 TAPER POWER DRAW BAR, 9-1000 RPM, (X, Y, Z, W AXIS)
& FAGOR (B AXIS) DRO, 55" X 43" ROTARY TABLE, XYZW:
65" X 44" X 28" X 44", S/N 40085, (#3504)

GIDDINGS & LEWIS G50RTX, G&L 8000B CNC CONTROL, 5"
SPINDLE, 3,000 RPM/40 HP, #50 TAPER / POWER DRAW BAR, X
72", Y 104", Z 36", W 61", 60" X 60" B AXIS FULL CONTOURING
360,000 POSITION ROTARY TABLE, 30,000 LB CAPACITY, A AXIS
TILTING HEAD ATTACHMENT, S/N 450-340-96, (#3105)



INSPECTION DEPARTMENT

SHEFFIELD ENDEAVOR 12.30.10 CMM, RENISHAW PH10T PROBE, S/N R-0509-1205

STIEFELMAYER VALIDATOR HORIZONTAL CMM, 68" X 236.5" TABLE, RENISHAW PH10M PROBE,
S/N 583-3001-203

HANSFORD RAPID CHECK CMM, RENISHAW PH1 PROBE, S/N H587

FERRANTI 1500 MAXI-CHECK CMM, S/N M-0130-0998

JONES & LAMSON ERIC-30 OPTICAL COMPARATOR,
QUADRA-CHEK 200 DRO, 30" SCREEN, S/N HM1616

PRECISION 48" X 144" GRANITE SURFACE PLATE,
METAL STANDS





HORIZONTAL MACHINING CENTERS

2012 MAKINO A82M, HIGH TORQUE PACKAGE, FANUC PRO 5 CNC CONTROL, 4-AXIS, XYZ TRAVELS: 43.3" X 32.3" X 40.1", 24.8" SQ DUAL PALLETS, FULL B AXIS - .001 DEG., 50 HP SUPER HT SPINDLE - 8,000 RPM, HSK 100A, HIGH PRESSURE COOLANT THRU SPINDLE / CHIP BLASTER, 137 ATC, CHIP CONVEYOR, COOLANT TANKS & PUMPS, S/N 189, (#3803)

CINCINNATI MAGNUM H5-1000 AP HMC, 5-AXIS, 100 HP / 24,000 RPM, XYZ TRAVELS: 74" X 58" X 60", A AXIS: +60 / -120 DEG, B AXIS: 360 DEG, SIEMENS 840D CNC, S/N ZF00A04060002, (#3802)

CINCINNATI 20H-2500, 35" ROTARY TABLE, GE FANUC SERIES O-M CNC CONTROL, S/N 55403H1-78-1, (#3106)

CINCINNATI TC30 HORIZONTAL, 4-AXIS, 30 HP / 20-3600 RPM, XYZ TRAVELS: 100" X 75" X 40", B AXIS 360 DEG, ACRAMATIC 950 CNC CONTROL, S/N 3129B0189-006, (#3701)



2012

CNC GRINDER

1998 ANCA TGX TOOL & CUTTER GRINDER, XYZ TRAVELS: 30" X 18" X 14", GRINDING LENGTH: 30", OD GRINDING DIAMETER: 0.079" TO 13.780", GRINDING WHEEL DIAMETER: 7.874", GRINDING WHEEL BORE: 1.250", WHEEL HEAD: MOTOR: 24 HP, SPEED: 8,000 RPM, ANCA CNC CONTROL, EBBCO PACKAGE FILTRATION SYSTEM, SMOG HOG, S/N 323361



TURNING CENTERS

2022 HAAS ST-45 LATHE, HAAS CNC CONTROL, LMC ATLING AX5 STEADY REST, XZ TRAVELS: 17" X 44", 1400 RPM SPINDLE, 12 STATION TURRET, EXTENDED TOOL POCKET, REMOTE JOG HANDLE, RAPID TAPPING, PROGRAMABLE TAILSTOCK, AUTOMATIC TOOL PRESETTER, HAAS CNC CONTROL, NO CHUCK, CHIP CONVEYOR, WIFI CONNECTION, S/N 3125210, NEW NEVER USED

TAKASAWA TC-4, FANUC SERIES 18-T CNC CONTROL, 2-AXIS, 11-2500 RPM, XZ TRAVELS: 11" X 86.5", 10" 3-JAW CHUCK, 10 STATION TURRET, S/N THXM-5399, (#2404)

SCREW TYPE AIR COMPRESSORS & DRYER

2015 KAESER SFC 200, 250 HP, 125 PSIG, S/N 1082

2016 KAESER DSD 200, 200 HP, 125 PSIG, S/N 1029

2017 KAESER CSD 100S, 100 HP, 125 PSIG, S/N 1173

GARDNER DENVER EBQ99R, 150 HP, 150 PSIG, S/N S571326

KAESER TH371E AIR DRYER, S/N 10000002987816



2017

100 HP



150 HP



2016

200 HP



2022

NEVER USED

MACHINE SHOP

BRIDGEPORT EZ TRAK VERTICAL MILL, BPCZM CONTROL, 11" X 58" TABLE, S/N 8641E

BRIDGEPORT SERIES II SPECIAL VERTICAL MILL, 11" X 58" TABLE, POWERFEED

CINCINNATI GILBERT RADIAL ARM DRILL, 60" ARM, S/N 5848

CHEVALIER FSG-1632 AD AUTOMATIC SURFACE GRINDER, 16" X 32" MAGNETIC CHUCK, S/N 80367

DOALL 3613-1 VERTICAL BAND SAW, 36" THROAT, S/N 44098790

PRATT & WHITNEY 3B PRECISION JIG BORE, 24" X 55" TABLE, XYZ DRO, S/N 26192

PRATT & WHITNEY 2A PRECISION JIG BORE, 22" X 45" TABLE, XYZ DRO, S/N 23122

CINCINNATI HORIZONTAL MILL, 18" X 80" TABLE, 16-1600 RPM

CADILLAC 1780 G GAP BED LATHE, 20" X 80", 12" 3-JAW CHUCK, TAILSTOCK, STEADY REST

CAZENEUVE HB 725 LATHE, 28" X 80", TAILSTOCK, XY DRO

HYD-MECH A-20 HORIZONTAL BAND SAW, S/N 20189180

JET HBS-1321W HORIZONTAL BAND SAW

CINCINNATI MONOSET, MAKINO AND MACHINIST TOOL & CUTTER GRINDERS

2011 CAMFIL FARR AIR GOLD SERIES GSP4 AIR POLLUTION CONTROL UNIT, S/N 952440001

(2) HYDROTRON FILTER 1 DHYD-2-50-10-8-MO DOWNDRAFT TABLES, DUAL OPERATOR, S/N'S 13-100-28-563, 13-100-28-560

SPERONI KPT TOOL PRESETTER

TOOL DYNAMIC HARMONIZER

(2) SUHNER MONOMASTER MULTI SPINDLE TABLE DRILL STATIONS, STA.6, 4.8MM

GEA OIL SEPARATOR, GENERAL PNEUMATICS 8000 CSA C-FRAME PRESS, ARBOR PRESSES, H-FRAME PRESS, DOUBLE END GRINDER AND MORE!



SHOP SUPPORT

TOOL CRIB, STORAGE CABINETS, POWER TOOLS, 50 TAPER TOOL HOLDERS, PERISHABLE TOOLING, CARTS, BENCHES AND RELATED



JIB CRANES

(2) ACE & CAL STATES, 2 TON HOISTS, FLOOR TYPE



RIDE ON FLOOR SCRUBBERS

TENNANT T-20, LPG, S/N T20-5493

ADVANCE CAPTOR 4300 AXP, S/N 1000008010

ADVANCE 6250, S/N 1900786

ADVANCE ADGRESSOR 3220C, S/N 1878224





**SIEMENS 840D SL - RETROFIT
& RECONDITIONED 2014**



2021 SIEMENS 840D SL CNC RETROFIT



80" SPINDLE CENTERS



80" SPINDLE CENTERS

MULTI-SPINDLE CNC GANTRY PROFILERS

CINCINNATI 3 SPINDLE 3 AXIS BED TYPE GANTRY, 40" CC, 30 HP / 20-3600 RPM, XYZ TRAVELS: 680" X 84" X 18", SIEMENS 840D CNC CONTROL, S/N 4318-81-0003, (#2201)

CINCINNATI 3 SPINDLE 3 AXIS BED TYPE GANTRY, 40" CC, 30 HP / 20-3600 RPM, XYZ TRAVELS: 680" X 84" X 18", SIEMENS 840D CNC CONTROL, S/N 4318-81-0004, (#2202)

**BED & HIGH RAIL SHARED BETWEEN 2201 & 2202 WILL BE OFFERED AS (2 X 30' BED & 15' X RAIL EXTENSION - SEPARATE LOTS)*

CINCINNATI 3 SPINDLE 5 AXIS BED TYPE GANTRY, 40" CC, 30 HP / 20-3600 RPM, XYZ TRAVELS: 792" X 84" X 28", A & B AXIS: +/- 25 DEG, SIEMENS 840D CNC CONTROL, S/N 4318-81-0012, (#2505)

CINCINNATI 3 SPINDLE 5 AXIS BED TYPE GANTRY (MODEL B SPINDLES), 40" CC, 30 HP / 20-3600 RPM, XYZ TRAVELS: 816" X 84" X 28", A & B AXIS: +/- 25 DEG, SIEMENS 840D CNC CONTROL, S/N RJ00A01810031, (#2506)

**BED & RAIL SHARED BETWEEN 2505 & 2506 WILL BE OFFERED AS (30' BED, 24' BED, 18' BED, 12' RAIL - SEPARATE LOTS)*

CINCINNATI 3 SPINDLE 5 AXIS BED TYPE GANTRY, SIEMENS CNC 840D SL RETROFIT & RECONDITIONED CONTROL, 40" CC, 30 HP / 20-3600 RPM, XYZ TRAVELS: 580" X 84" X 30", A & B AXIS: +/- 25 DEG, 90' BED, SIEMENS 840D SL CNC CONTROL, S/N 4318-81-0020, (#2507)

CINCINNATI 3 SPINDLE 5 AXIS WR7000 RAIL TYPE GANTRY 80" SPINDLE CENTERS, 70 HP, 7,000 RPM, 240" WIDE TABLE, XYZ TRAVELS: 1128" X 144" X 28", A & B AXIS: +/- 30 DEG, ACRAMATIC 950 CNC CONTROL, S/N 4320E0198-0001, (#2601)

CINCINNATI 3 SPINDLE 5 AXIS WR7000 RAIL TYPE GANTRY, 80" SPINDLE CENTERS, 70 HP, 7,000 RPM, 240" WIDE TABLE, XYZ TRAVELS: 1128" X 144" X 28", A & B AXIS: +/- 30 DEG, ACRAMATIC 950 CNC CONTROL, S/N 4320E0198-0002, (#2602)

**120" X AXIS RAIL SHARED BETWEEN 2601 & 2602: (60' INCLUDED W/ EACH MACHINE OR 12' RAIL SECTIONS IN 10 LOT #'S)*

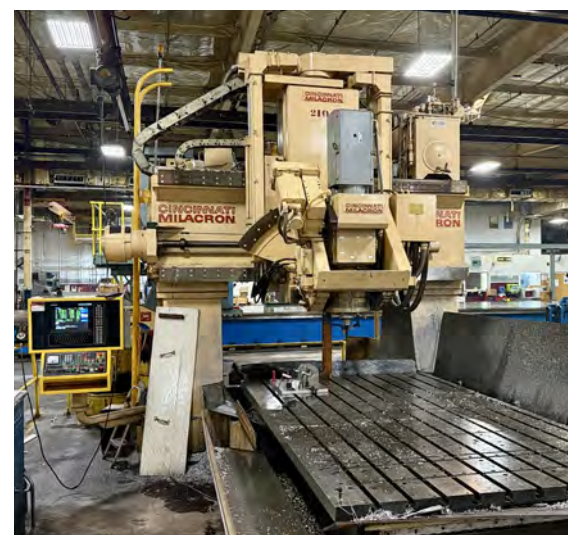


SINGLE SPINDLE CNC PROFILERS

CINCINNATI 20V-80 5-AXIS (2021 SIEMENS 840D SL CNC CONTROL RETROFIT), 30 HP / 20-3600 RPM, XYZ TRAVELS: 80" X 30" X 28", A & B AXIS: +/- 25 DEG, S/N 85-415Q225-1, (#2101)

CINCINNATI 20V-120 5 AXIS (2021 SIEMENS 840D SL CNC CONTROL RETROFIT), 30 HP / 20-3600 RPM, XYZ TRAVELS: 120" X 30" X 28", A & B AXIS: +/- 25 DEG, S/N 86-4160138-1, (#2103)

CINCINNATI 30V-BRIDGE, SINGLE SPINDLE, 5-AXIS, 30 HP / 20-3600 RPM, XYZ TRAVELS: 144" X 68" X 28", A & B AXIS: +/- 25 DEG, ACRAMATIC 950 CNC, S/N 89-4180736-1, (#2104)



VEHICLES & TRAILERS

2014 FORD F-450 FLATBED, AUTOMATIC, 2 DOOR, GASOLINE,
CA LIC: 65130L1, VIN: 1FDUF4GY5EEA25937

2008 FORD F-450 FLATBED, 2 DOOR, DIESEL,
VIN: 1FDXF46R48EA35175

(2) FONTAINE 40' TRAILERS

2008



2014



FORKLIFTS & SCISSOR LIFTS

TOYOTA 8FG45U, 8500 LB CAPACITY, LPG, 3-STAGE MAST, SIDE SHIFT,
2-SPEED POWER SHIFT TRANSMISSION, LOAD LIGHTS S/N 12569

TOYOTA 8FGCU25, 3500 LB CAPACITY, LPG, 3-STAGE MAST, SIDE SHIFT, ROTATOR
ATTACHMENT, LOAD LIGHTS S/N 12569

YALE GLC100VXNGAE092, 9000 LB CAPACITY, LPG, 3-STAGE MAST, SIDE
SHIFT, ROTATOR ATTACHMENT, LOAD LIGHTS, S/N F818V01752L

SKYJACK SJ III 6832, ELECTRIC



1 OF 2



ALUMINUM PLATE & RAW MATERIAL



TOOLING & QC

(2) 2019 API LASER TRACKERS, HUGE QTY
TOOLING AND RELATED

NEW 2019



CRATES OF TOOLING



NEW 2019



API LASER TRACKERS

API LASER TRACKERS