

FINE JEWELLERY

TUESDAY 16 JUNE 2026 | NEWBURY



DREWEATTS

EST. 1759



FINE JEWELLERY

TUESDAY 16 JUNE 2026 | NEWBURY

LOTS 1-210 | 10.30AM

VIEWING IN LONDON

Tuesday 9 June: 10am–4pm

Wednesday 10 June: 10am–4pm

VIEWING IN NEWBURY

Saturday 13 June: 10am–3pm

Sunday 14 June: 10am–3pm

Monday 15 June: 10am–4pm

ENQUIRIES & CONDITION REPORTS

jsw@dreweatts.com

Dresses courtesy of

BEULAH
FIGHTING SLAVERY THROUGH FASHION

NEWBURY

Donnington Priory, RG14 2JE

+44 (0) 1635 553 553

LONDON

16-17 Pall Mall, SW1Y 5LU

+44 (0) 20 7839 8880

info@dreweatts.com

dreweatts.com

DREWEATTS

EST. 1759

A GUIDE FOR BUYERS

REGISTRATION AND BIDDING

We advise bidders to register at least 48 hours in advance of the auction as we will need to complete Know Your Client checks on all registrants in order to comply with sanctions regimes. Clients are advised to register with a correct account as re-billing will not be possible. We allow commission (or absentee bids), telephone bids, live online bidding, and in person bidding. More information is available in our Terms of Sale at the back of this catalogue, and on our website.

BUYER'S PREMIUM

27% of hammer price up to £20,000
(32.4% including VAT), plus

26% of hammer price from £20,001 up to £500,000
(31.2% including VAT), plus

20% of hammer price in excess of £500,001
(24% including VAT)

ADDITIONAL CHARGES AND SYMBOLS

λ - Indicates that this lot may be subject to Artist's Resale Right (Droit de Suite) royalty charges.

Y - Indicates that this lot may be subject to CITES regulations when exported.

† - Indicates that VAT is payable by the purchaser at the standard rate of 20% on the hammer price as well as being charged on the buyer's premium.

θ - Indicates that the lot is a zero rated item and therefore subject to buyer's premium of 27% exclusive of VAT (0% VAT).

‡ - Indicates that the lot is being sold whilst subject to temporary importation and that import VAT at the reduced rate (currently 5%) calculated on the hammer price is due.

Ω - Indicates that the lot has been imported from outside the UK and that import VAT at the standard rate (currently 20%) calculated on the hammer price (inclusive of any applicable duty) is due.

β - Indicates that the lot is offered in Bond. This applies to wine. Bidding will be at duty paid prices other than for those lots marked 'IN BOND/β'.

Note, the import VAT charged for lots with symbols ‡ or Ω can be refunded if Dreweatts is instructed to re-export the property or if the VAT liability is transferred to another Temporary Admission authorisation.

PAYMENT

If you are successful, an invoice will be sent to the email address registered on your bidder account. The invoice will include detailed payment and collection information. If you wish to see this in advance, please visit our website. Items must be paid for in full and Know Your Client checks must be completed before we can release any purchases. Third

party payments are not accepted. First time buyers may also be subject to restrictions on the methods of payment we can accept. Please confirm this with the saleroom prior to collection.

COLLECTIONS, SHIPPING AND STORAGE

Unless otherwise stated below, purchases are available for collection from Dreweatts Donnington Priory salerooms from Monday to Friday (9am-5pm) by appointment only. If you wish to have the item shipped to you, please see the list of suggested shippers on our website.

Due to a busy schedule of sales, we are unable to store sold items at the salerooms; any items not collected after 4 working days of the sale (by 4pm) are removed to commercial storage and subject to a storage charge of £20 (plus VAT) per lot as well as a further storage charge of £3 (plus VAT) per lot per day thereafter. Please note for large consignments there may be additional charges. These charges will be the sole liability of the purchaser and will be billed directly to them by Sackville-West Moving & Storing. On payment of all sales and storage costs, items will be available for collection by appointment from Sackville-West Moving & Storing (Andover SP10 3SA).

CONDITIONS OF SALE

Any registration to bid is subject to acceptance of our Auction Terms and Conditions and Privacy Policy. Both are available on our website.

CONDITION OF ITEMS

Buyers must satisfy themselves to the condition of any item prior to bidding. Detailed condition reports and additional images are available upon request.

EXPORT OF ITEMS

Prospective bidders are advised to familiarise themselves with any export and import restrictions or prohibitions applicable to the lots they wish to purchase. For example, the lots may contain prohibited material such as endangered species (and therefore be subject to CITES regulations) or be subject to shipping or trade restrictions. Cultural objects of certain age and value may require a UK export licence. It is buyer's responsibility to obtain any relevant export and/or import licences and permits, as well as pay any customs duties, taxes and other fees applicable on import into the destination country. Dreweatts will not cancel the sale if a lot may not be exported, imported or it is seized for any reason by a government authority.

GLOSSARY OF TERMS

Where relevant, for example Picture auctions or Clocks auctions, a glossary of cataloguing terms will be available in the printed catalogues as well as on our website.

SPECIALISTS FOR THIS AUCTION



Charlotte Peel GG
Head of Jewellery



Tessa Parry FGA, DGA
Jewellery and Luxury Accessories

Gemma Johnson
Sale Administrator



1



2



3

1
AN ARCHAEOLOGICAL REVIVAL BANGLE
1870S

The cylindrical bar with filigree and beadwork decoration, between ram's head finials, one a pencil holder, to stylized hinges with locking post clasp, applied scrolled wirework and bead detail, applied lettering to the band, reading 'SALVE AEI' (Welcome Always) between the Greek letters alpha and omega (the beginning and the end), unmarked
Size/dimensions: inner diameter 6.0cm
Gross weight: 64.5 grams

£2,500-3,500

2
WIESE, AN ARCHAEOLOGICAL REVIVAL
SCARAB BROOCH
CIRCA 1890

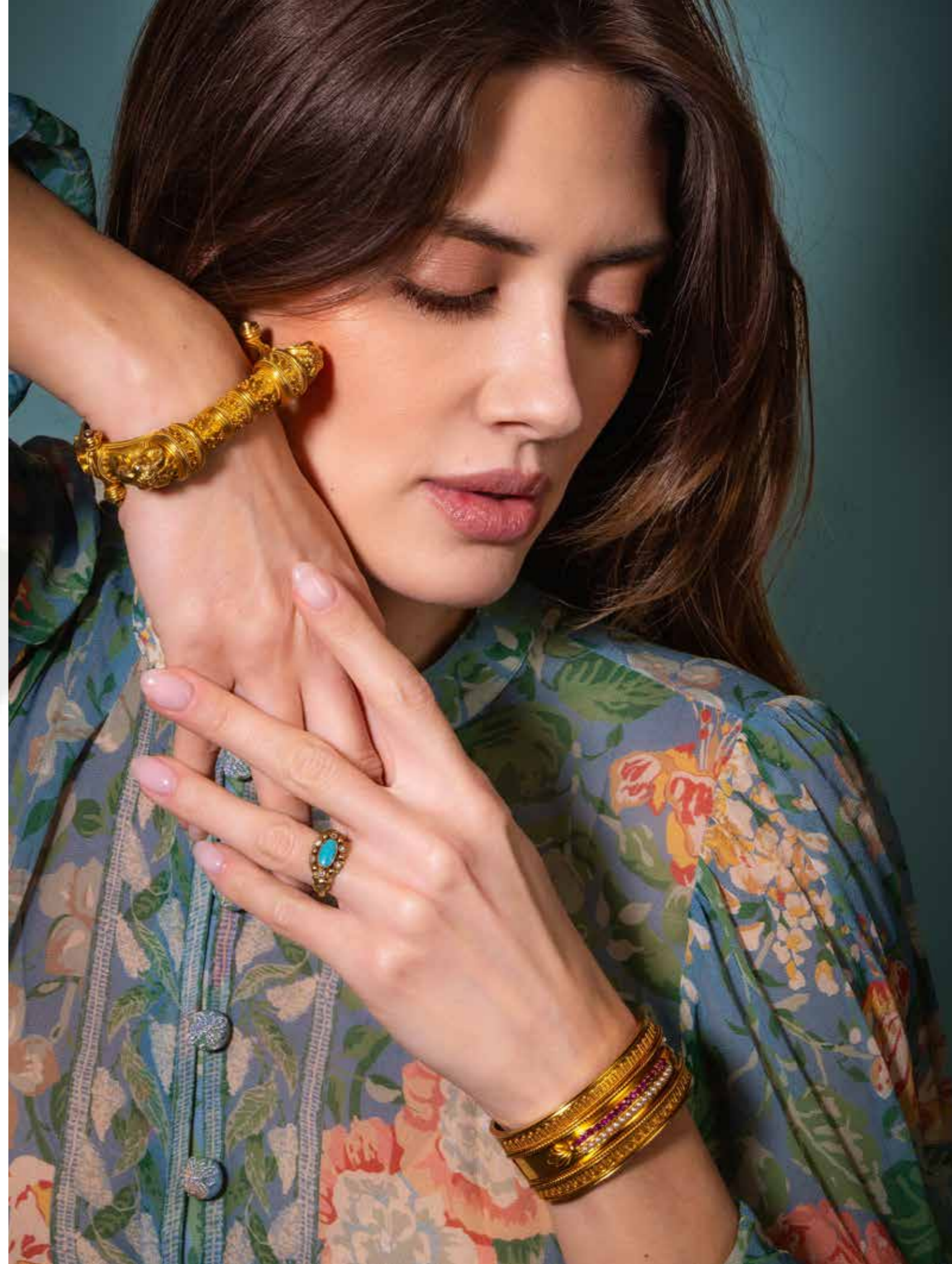
The carved black basalt scarab claw set within a ropetwist frame, signed Wiese
Size/dimensions: 3.3cm long
Gross weight: 16.2 grams

£1,500-2,000

3
AN ARCHAEOLOGICAL REVIVAL RUBY
AND SPLIT PEARL BANGLE
CIRCA 1870

The front with a raised panel set with a line of circular cut rubies next to a line of split pearls, between ropetwist and beadwork borders, unmarked
Size/dimensions: inner diameter 5.7cm
Gross weight: 41.2 grams

£1,000-1,500





4

4
AN EARLY 19TH CENTURY TURQUOISE AND RUBY SET HEART SHAPED LOCKET
CIRCA 1830S
The heart shaped panel with chased leaves and two colour gold flowers on a textured ground, with a central cabochon turquoise and oval cut ruby forget-me-not, beaded borders, opening to a vacant reserve, floral bale, unmarked
Size/dimensions: 3.9cm long
Gross weight: 13.5 grams

£1,200-1,800



5

5
A TURQUOISE AND DIAMOND CLUSTER RING
The sugarloaf cabochon turquoise within a surround of old European cut diamonds, to an associated shank with pierced shoulders, stamped
18ct
Size/dimensions: ring size L
Gross weight: 5.7 grams

£700-1,000



6

6
A REGENCY GEM SET HARP BROOCH
CIRCA 1820
The harp with cabochon turquoise accented arch, with floral and scroll decorated ruby and emerald set soundbox, verso with a small locket compartment, unmarked
Size/dimensions: 4.6cm long
Gross weight: 5.6 grams

£1,200-1,800



7

7
A TURQUOISE AND DIAMOND CLUSTER RING
FIRST HALF OF THE 19TH CENTURY AND LATER
The central oval turquoise panel (fractured) within a gold beaded and old mine cut diamond surround, hinged glazed compartment verso, to scrolled acanthus leaf shoulders, later polished shank, unmarked
Size/dimensions: ring size approximately L-M
Gross weight: 2.6 grams

£300-500



8

8
A MID 19TH CENTURY POSY HOLDER
Of cornucopia design, the filigree cone with turquoise accents to the collar and a lily shaped terminal, later brooch fitting, unmarked
Size/dimensions: 8.7cm long
Gross weight: 19.2 grams

£1,600-2,000



9

9
AN ENAMEL MUSICAL FOB
CIRCA 1820S
With barillet movement, the tapered circlet handle with chased and enamelled flower decoration and a reclining dog, above a scrolled gallery, unmarked
Size/dimensions: 4.2cm tall
Gross weight: 17.5 grams

£1,500-2,000



10

10
AN EARLY 20TH CENTURY TURQUOISE AND DIAMOND PENDANT NECKLACE
Designed as two sugarloaf cabochon turquoise with millegrain set old cut diamond cardinal points and connectors on a knife edge bar, to a cable link chain
Size/dimensions: 40.5cm long
Gross weight: 4.6 grams

£400-600



11

11
A PAIR OF GEM SET CUFFLINKS
Double-sided: each terminal designed as a mask, accented with a circular cut demantoid garnet, pink sapphire or old European cut diamond, stamped 14
Size/dimensions: terminals 1.5cm long
Gross weight: 11.4 grams

£400-600



13

13
A PAIR OF RUBY AND DIAMOND CUFFLINKS
Each composed of a torpede shaped terminal inset with a circular cut ruby and a domed terminal inset with an old European cut diamond, stamped 18ct
Size/dimensions: terminals 2.0cm long
Gross weight: 7.4 grams

£300-500



12

12
A PAIR OF EARLY 20TH CENTURY DIAMOND SET CUFFLINKS
Composed of a larger and smaller bead terminal, inset with old cut diamonds, stamped with spurious marks
Size/dimensions: terminal 1.0cm wide
Gross weight: 8.8 grams

£400-600





14

14
TIFFANY & CO., A PAIR OF HEMATITE CUFFLINKS

Each cylindrical hematite terminal with polished finials and banding, to a hinged rectangular baton, signed Tiffany & Co., stamped 18k

Size/dimensions: terminal length 2.2cm

Gross weight: 15.5 grams

£700-1,000

15 Y
ANGELA CUMMINGS FOR TIFFANY & CO., A PAIR OF LAPIS LAZULI AND MOTHER-OF-PEARL CUFFLINKS

Each composed of a smaller and larger domed terminal of chequerboard design, inlaid with rectangular mother-of-pearl and lapis lazuli panels, signed Tiffany & Co., stamped 750

Size/dimensions: larger terminal 1.8cm long

Gross weight: 12.3 grams

Please be aware that this lot contains material which may be subject to import/export restrictions, due to CITES or Fish & Wildlife regulations. Please note it is the buyer's sole responsibility to obtain any relevant export or import licence.

£800-1,200



16

16
SCHLUMBERGER FOR TIFFANY & CO., A PAIR OF HEMATITE CUFFLINKS

Each acorn shaped terminal set with a hematite bead to a stylised cap, bar connectors, signed Schlumberger, Tiffany, stamped 18K

Size/dimensions: terminal length 1.1cm

Gross weight: 15.5 grams

£700-1,000



17

17
A PAIR OF CITRINE AND SAPPHIRE CUFFLINKS

The polished circular citrine terminals each centred with a cabochon sapphire, with bar connectors, stamped 18K

£250-350



18

18
HERMÈS, A PAIR OF RABBIT CUFFLINKS

LONDON 1998 IMPORT MARKS
Each squared cushion shaped silver terminal with applied polished rabbit motif, the bar connectors to a smaller squared panel, stamped Hermès Paris HGB with French poinçons and UK import marks, with original box and outer card case

£120-180



19

19
A PAIR OF BLUE TOPAZ CUFFLINKS

The faceted squared blue topaz panels with belcher link connectors, unmarked

£250-350



20

20
A PAIR OF DIAMOND SET CUFFLINKS

The textured batons with a central band of single cut diamonds, swivel fittings, stamped 14K

£500-800



21

21
CARTIER, A PAIR OF SAPPHIRE SET CUFFLINKS
 CIRCA 1959
 Each square panel of reeded and hobnail design, collet set with a square cut sapphire, to reeded baton terminals, numbered N9874, UK import mark, sponsor's mark JC
 Size/dimensions: panel 1.5cm wide
 Gross weight: 19.4 grams

Provenance:
 The Property of a Lady of Title

£1,200-1,800



22

22
CARTIER, A 9CT GOLD MONEY CLIP
 LONDON, 1974
 The circular plaque engraved with initials, signed Cartier, UK hallmark, maker's mark JC
 Size/dimensions: 2.9cm wide
 Gross weight: 20.0 grams

Provenance:
 The Property of a Lady of Title

£400-600



23

23
CARTIER, A PAIR OF ENAMEL CUFFLINKS
 Each reeded bead with alternating polished and black enamel sections, to cross-hatched baton terminals, signed Cartier, numbered P5680, stamped 0750
 Size/dimensions: beads 1.4cm wide
 Gross weight: 20.2 grams

Provenance:
 The Property of a Lady of Title

£800-1,200



24

24
LALAOUNIS, A PAIR OF BI-COLOUR CUFFLINKS
 The recessed hatched centre within a frame accented with screwhead motifs, to T-bar connectors, maker's mark, stamped 750, maker's case
 Size/dimensions: terminal 1.8cm wide
 Gross weight: 12.8 grams

£600-800



25

25
LALAOUNIS, A PAIR OF CUFFLINKS
 The pierced and textured Greek Key style square panels to swivel terminals, stamped A21 750 with maker's mark, maker's case
 Size/dimensions: 1.5cm wide
 Gross weight: 12.8 grams

£600-800



26

26
A PAIR OF DIAMOND SET CUFFLINKS
 The matt figure of eight shaped panels with a crossover band set with single cut diamond accents, swivel fittings, stamped 14k
 Size/dimensions: 2.6cm long
 Gross weight: 17.3 grams

£500-800



27

27
A PAIR OF ROSE QUARTZ AND RUBY CUFFLINKS
 The melon shaped rose quartz each centred with a circular cut ruby, with belcher link connectors, unmarked
 Size/dimensions: the principal rose quartz panel 1.4cm diameter
 Gross weight: 8.2 grams

£250-350



28



29



30



31



32



33

28
SHAUN LEANE, AN ENAMEL BAND RING
LONDON 2006

The broad 18ct gold band with *Amo Ut Invenio* on a red enamel ground, UK hallmark, maker's mark

Size/dimensions: ring size Q

Gross weight: 12.2 grams

Shaun Leane, born in 1969, began training at 16 as a classical goldsmith with the English Traditional Jewellery Company in Hatton Garden. After meeting Alexander McQueen through a friend in 1992, their joint ethos and creative drive led to a collaboration which was to last for many years and only came to an end with McQueen's death in 2010. In 1999 Leane founded Shaun Leane Jewellery with traditional craftsmanship and modern design at its heart. Leane has worked with Givenchy, Boucheron, and De Beers. His pieces have been worn by a number of celebrities including Elton John, Björk, Emma Watson and Kate Moss.

£400-600

29
LALAOUNIS, A RUBY AND DIAMOND
LION RING

Of crossover design, one terminal a lion's head, the other the tail, collet set with a line of circular cut rubies and a brilliant cut diamond set collar, one ruby deficient, maker's mark, stamped Greece 750, A21

Size/dimensions: ring size K

Gross weight: 10.9 grams

£500-700

30
A COLOURED MOONSTONE NECKLACE
AND BRACELET

The oval cabochon moonstones in spectacle settings, with belcher link connectors and lobster claw clasps, stamped 750

Size/dimensions: 18.5cm long, necklace

59.5cm long

Gross weight: 26.1 grams

£500-800

31 Y
A PAIR OF DIAMOND AND CORAL
CLUSTER EARRINGS

Each oval cabochon coral within a border of brilliant cut diamonds, post and clip fittings, stamped with Russian 585 marks

Size/dimensions: 1.8cm long

Gross weight: 8.6 grams

Please be aware that this lot contains material which may be subject to import/export restrictions, due to CITES or Fish & Wildlife regulations. Please note it is the buyer's sole responsibility to obtain any relevant export or import licence.

£700-1,000

32 Y
AN ITALIAN CORAL SET COLLAR NECKLACE

The collar composed of polished sprung bars to a central coral panel, with lobster claw fastener, stamped 750 Italy with Italian control marks

Size/dimensions: inner diameter 11.5cm

Gross weight: 43.7 grams

Please be aware that this lot contains material which may be subject to import/export restrictions, due to CITES or Fish & Wildlife regulations. Please note it is the buyer's sole responsibility to obtain any relevant export or import licence.

£1,200-1,800

33
A RUBY AND DIAMOND DRESS RING
AND EARRINGS

Of bombé design, invisibly set with calibré cut rubies between brilliant cut diamond borders, earrings with articulated post and clip fittings, stamped 750

Size/dimensions: ring size K (sizing band),

earrings 2.0cm long

Gross weight: 30.5 grams

Provenance:
The Property of a Lady of Title

£1,800-2,200



34

34
LISA SOTILIS,
A CUFF EARRING
 The textured pierced leaf shaped panel suspending a fringe of polished and textured discs on undulating wires, with hook and clip fitting, with maker's stamp
 Size/dimensions: panel 7.8cm long
 Gross weight: 31.5 grams

For further details please refer to our website.

£1,000-1,500



35

35
LISA SOTILIS FOR CARTIER,
A DRESS WATCH
 CIRCA 1970
 The circular silvered dial with gilt baton markers, within a broad hammered and radiating bezel, with a tapered brown leather strap and textured buckle, signed Cartier Automatic, maker's mark
 Size/dimensions: bezel 5.0cm long
 Gross weight: 38.4 grams

For further details please refer to our website.

£3,000-5,000



36

36
LISA SOTILIS FOR CARTIER,
A DRESS WATCH
 CIRCA 1970
 The enamelled blue lapis lazuli style oval dial with gilt Roman numerals, within a broad hammered bi-colour bezel, with a tapered black leather strap to textured buckle, signed Cartier, maker's mark, case numbered 21043 107, stamped 18K
 Size/dimensions: bezel 5.3cm long
 Gross weight: 40.3 grams

For further details please refer to our website.

£3,000-5,000



37

37
LISA SOTILIS,
A PAIR OF CUFFLINKS
 The shaped panels with textured finish, with figure of eight connectors, unmarked
 Size/dimensions: largest panels approximately 3.5cm long
 Gross weight: 20.6 grams
 For further details please refer to our website.

£600-800



38
A PREHNITE AND CITRINE BEAD NECKLACE
 The alternating graduated polished melon shaped prehnite and citrine beads to a looped clasp, stamped 18k
 Size/dimensions: 62cm long
 Gross weight: 237.3 grams

£600-800

38



39

39
AN AQUAMARINE AND ENAMEL DRESS RING
 The cushion shaped cabochon aquamarine within a pierced blue enamel surround, to a blue enamel shank with floral detail, unmarked
 Size/dimensions: ring size approximately N
 Gross weight: 15.7 grams

£400-600



40

40
A DIAMOND, ENAMEL, SEED PEARL AND CULTURED PEARL KUNDAN PENDANT
 The pierced foliate panel with polki diamonds with red, green and white floral enamelling to the reverse, suspending a cultured pearl drop with filigree cap, the panel hanging from a double seed pearl set chain with S shaped clasp stamped 925
 Size/dimensions: panel and drop 6.2cm long
 Gross weight: 29.1 grams

£600-800

41

41
AN INDIAN BERYL AND DIAMOND NECKLACE
 The oval beryl pendant with floral carved verso, set to the front with a floral motif with Kundan set diamonds, to a beryl bead necklace with ropetwist spacers, unmarked
 Size/dimensions: 49.0cm long
 Gross weight: 83.2 grams

£600-800

42
A FRESHWATER CULTURED PEARL, SAPPHIRE, DIAMOND AND TURQUOISE TASSEL NECKLACE
 The graduated freshwater cultured pearl, polished sapphire and turquoise bead tassel, with pierced brilliant cut diamond set cap, to a cabochon turquoise, diamond and blue enamelled panel, with two shaped panels above and below, suspended from a freshwater cultured pearl, polished sapphire and turquoise bead necklace, to a lobster claw clasp, stamped 925
 Size/dimensions: necklace 42cm long, drop section 14cm long
 Gross weight: 54.6 grams

£1,000-1,500

42



43

**43
A SAPPHIRE AND
DIAMOND DRESS RING**

The old European cut diamond within an openwork hexagonal surround set with single and old cut diamonds and calibré cut sapphires, unmarked
Size/dimensions: ring size M
Gross weight: 5.1 grams

£800-1,200



44

**44
PIAGET, A LAPIS LAZULI AND DIAMOND
WRISTWATCH**

The oval lapis lazuli dial within a brilliant cut diamond bezel, case back secured by two screws, integral textured 18ct white gold Piaget bracelet, signed Piaget, case back numbered 9804 A 6, 177473, Swiss control mark, UK import mark
Size/dimensions: case 28mm wide, watch 18.5cm long
Gross weight: 67.0 grams

Provenance:
The Property of a Lady of Title

£3,000-5,000



45

**45
A DIAMOND, AQUAMARINE AND
ENAMEL DRESS RING**

LONDON 2019
The central oval cut aquamarine and brilliant cut diamond cluster to a bombé black enamelled setting set with brilliant and pear shaped rose cut diamond clusters, mounted in 18 carat white gold, UK hallmark
Size/dimensions: ring size N
Gross weight: 15.7 grams

£800-1,200



46

**46
A PAIR OF SAPPHIRE AND DIAMOND EARRINGS**

The brilliant cut diamond set pierced panels with hooped scrolled detail, with a central oval cut sapphire, clip and fold out stud fittings, unmarked
Size/dimensions: 3cm long
Gross weight: 14.4 grams

£500-800



47

**47
RENÉ LALIQUE, A GLASS 'GUÉPES' PENDANT**

DESIGNED 1920
The oval blue glass plaque with wasps in relief, suspended from a black cord, to a black tassel
Size/dimensions: plaque 5.5cm long
Gross weight: 50.0 grams

£300-500



48



49



50



51



52

48
A MID 20TH CENTURY DIAMOND AND PEARL BROOCH

The shaped circular panel set throughout with old cut diamonds, with a crescent of bouton pearls, unmarked
Size/dimensions: 3.8cm long
Gross weight: 15.6 grams

Please note the pearls are untested and unwarranted as natural pearl

£1,000-2,000

49
AN EMERALD AND DIAMOND BANGLE
EARLY 20TH CENTURY AND LATER

Designed as an old European cut diamond set octagonal cluster, between rectangular cut emerald and old cut diamond shoulders, later mounted on a hinged bangle, bangle stamped 12k
Size/dimensions: inner diameter 5.8cm
Gross weight: 24.8 grams

£1,200-1,800

50
A MID 20TH CENTURY DIAMOND BROOCH
CIRCA 1960

Designed as a pavé set single cut diamond flowerhead with brilliant cut diamond centre, to a single, brilliant and baguette cut diamond foliate spray, twin prong fitting, unmarked
Size/dimensions: 4.7cm long
Gross weight: 21.7 grams

£1,500-2,000

51
A MID 20TH CENTURY DIAMOND DOUBLE-CLIP BROOCH

Of ribbon spray design, set throughout with old European, single and baguette cut diamonds, twin prong and brooch fittings, unmarked
Size/dimensions: 5.2cm wide
Gross weight: 25.5 grams

£5,000-7,000

52
A DIAMOND FOLIATE BROOCH

The leaf composed of a cluster of marquise cut diamonds, to a baguette cut diamond stem, diamonds approximately 2.70 carats total, unmarked
Size/dimensions: 2.9cm long
Gross weight: 6.0 grams

£800-1,200



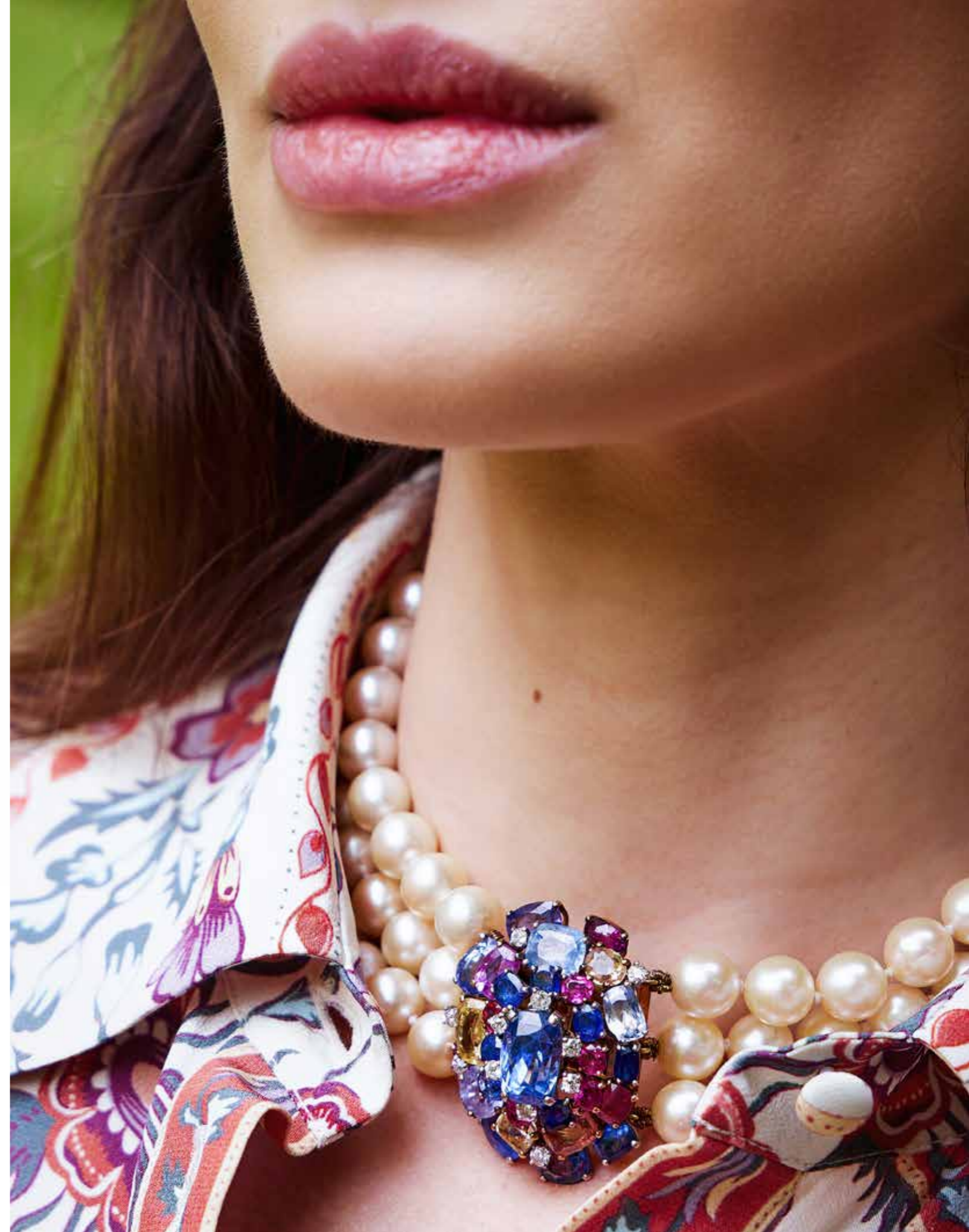
53

53
A SAPPHIRE, COLOURED SAPPHIRE, DIAMOND AND CULTURED PEARL NECKLACE
CIRCA 1935-40

The tiered cluster clasp, set with cushion shaped sapphires, yellow, pink, purple and pinkish orange sapphires, with old European cut diamond accents, to three uniform rows of 9.2-10.1mm cultured pearls, unmarked
Size/dimensions: clasp 4.0cm long
Gross weight: 160.0 grams

Offered for sale with a Gemmological Certification Services (GCS) report, no. 5786-2376, dated 30th April 2026, for the principal sapphire stating:
Variety: Natural Sapphire
Origin: Sri Lanka
Comment: No indications of heating

£12,000-18,000





54

54 LAUREL, A GEM SET LONG CHAIN

The cable link chain spectacle set with vari cut amethyst, citrine, blue topaz, garnet and peridot, with faceted 18ct gold beads between, signed Laurel, UK hallmark
Size/dimensions: 69.0cm long
Gross weight: 21.3 grams

£400-600

55 A BLUE TOPAZ AND ONYX DRESS RING
LONDON 2019

The pear shaped blue topaz within a polished onyx surround, to a polished tapered 18ct rose gold shank, UK hallmark, maker's mark JLM
Size/dimensions: ring size N
Gross weight: 8.8 grams

£400-600



55



56

56 A QUARTZ CHAIN NECKLACE

The circular faceted amethysts, citrine and green quartz in spectacle settings, the lobster claw clasp stamped 750
Size/dimensions: 60.5cm long
Gross weight: 11.2 grams

£300-500



57



59

57 A DIAMOND SINGLE STONE PENDANT

The brilliant cut diamond in an 18ct gold four claw mount, to an 18ct gold curb link chain, UK hallmarks
Size/dimensions: pendant 1.2cm long, chain 47cm long
Gross weight: 3.5 grams

£250-350

58 FULKRO, A FANCY LINK NECKLACE AND BRACELET SET

Of alternating bi-coloured crescent shaped linking with bead connectors, Italian control mark, stamped 750
Size/dimensions: 45.0cm, bracelet 21.0cm long
Gross weight: 77.0 grams

£3,000-5,000



58

59 ASPREY, A PAIR OF DIAMOND HOOP EARRINGS

Each 18ct gold hoop, pavé set with graduated brilliant cut diamonds, signed APLC, London import mark
Size/dimensions: 2.4cm long
Gross weight: 16.0 grams

£2,000-3,000



60

60
AN EARLY 20TH CENTURY PEARL AND PANEL SWAG NECKLACE
 The cable link chain suspending a series of pearls between overlapping chains with rosette pendants and pearl drops, unmarked, cased by Noble & Chivers, New Bond Street, Bath
 Size/dimensions: 36.5cm long
 Gross weight: 12.6 grams

£400-600



61

61
A PAIR OF HARDSTONE COMEIO BROOCHES
 Each carved with a classical female profile within a reeded ropetwist frame, later brooch fittings, unmarked
 Size/dimensions: 2.3cm wide
 Gross weight: 14.4 grams

£600-800



62

62
AN EARLY 20TH CENTURY AMETHYST NECKLACE
 The central circular panel with a circular cut amethyst within a beaded cannetille surround and articulated cannetille crescent, with similar drop and side panels, to a curb link chain with associated clasp, with partial stamp
 Size/dimensions: central drop 5.2cm long, chain 46cm long
 Gross weight: 9.9 grams

£300-500



63

63
AN ANTIQUE DIAMOND FLOWERHEAD CLUSTER RING
 The flower head with a central table cut diamond, within a pierced shaped surround, set with lasque cut diamonds, to scrolled and lasque cut diamond set shoulders, reeded and polished shank, unmarked
 Size/dimensions: ring size J
 Gross weight: 3.9 grams

£500-700



64

64
CARRINGTON & CO., AN EARLY 20TH CENTURY GEM SET PENDANT
 CIRCA 1905
 Spectacle set with a hexagonal aquamarine, suspending a fancy cut amethyst drop, with a circular cut peridot connector, suspended from a fine cable link chain with pink stone connectors, cased by Carrington & Co., To his Majesty the King and Her Majesty Queen Alexandra
 Size/dimensions: 39.0cm long
 Gross weight: 4.9 grams

Provenance:
 The Property of a Lady of Title

£500-700



65



66



67



68



69



70

65
**A LATE 19TH CENTURY PASTE
 PENDANT/BROOCH AND EARRING SET**
 Each set with an oval cut purple paste inset
 with a floral motif with seed pearl and pink
 stone detail, within a textured bi-coloured
 gold wreath surround, suspending a chain
 fringe, earrings with later rose surmounts,
 unmarked, fitted case
 Size/dimensions: brooch 3.4cm wide,
 earrings 4.8cm long
 Gross weight: 29.0 grams

£600-800

66
**AN EARLY 20TH CENTURY HALF
 PEARL BANGLE**
 The hinged bangle with a central row of
 half pearls between bead and ropetwist
 borders, stamped 15ct
 Size/dimensions: inner width 5.7cm
 Gross weight: 11.6 grams

£300-500

67
**A MID 19TH CENTURY AMETHYST AND
 SPLIT PEARL CROSS PENDANT**
 MID 19TH CENTURY AND LATER
 Composed of five oval cut amethysts in
 foiled closed back settings, in beadwork
 mounts with split pearl trefoil cardinal
 points, unmarked
 Size/dimensions: 4.5cm wide
 Gross weight: 10.0 grams

£300-500

68
A GEORGIAN DIAMOND RING
 CIRCA 1820
 Set with an old mine cut diamond between
 tapered old mine cut diamond shoulders,
 mounted in silver and gold, later shank,
 unmarked
 Size/dimensions: ring size Q
 Gross weight: 4.8 grams

£1,000-1,500

69
**A GEORGIAN GARNET
 FRINGE NECKLACE**
 CIRCA 1830
 Composed of a continuous row of
 oval cut garnets in foiled closed back
 settings, suspending a similarly set
 pear-shaped garnet fringe, unmarked
 Size/dimensions: 37.5cm long
 Gross weight: 16.4 grams

£800-1,200

70
**A LATE 19TH CENTURY AMETHYST
 AND HALF PEARL BROOCH**
 The oval cut amethyst within a surround of
 half pearls with an alternating bead and ruby
 border, later brooch fitting, unmarked
 Size/dimensions: 4.4cm wide
 Gross weight: 19.8 grams

Please note the pearls are untested and
 unwarranted as natural pearl.

£500-700



71



73



72



74

71
ADLER, A PAIR OF RUBY
AND DIAMOND 'SERAIL'
EARRINGS

Each designed as five alternating polished or pavé diamond set loops, collet set with circular cut rubies, signed Adler, stamped 750, Serail, c1990
Size/dimensions: 2.4cm long
Gross weight: 26.6 grams

£2,000-3,000

72
A PAIR OF RUBY AND DIAMOND
CLUSTER PENDANT EARRINGS
LONDON 1987

Each oval cut ruby to a brilliant cut diamond surround and line surmount, mounted in 18ct gold, post fittings, UK hallmarks, maker's mark KN
Size/dimensions: 2.5cm long
Gross weight: 4.1 grams

£1,000-1,500

73
A PAIR OF JASPER, RUBY
AND DIAMOND EARRINGS

Each designed as opposing jasper leaves with brilliant cut diamond veining and an oval cut ruby and diamond connector, mounted in 14ct gold, post fittings, UK hallmark
Size/dimensions: 4.9cm long
Gross weight: 8.7 grams

£1,500-2,000

74
A STAR RUBY AND
DIAMOND CLUSTER RING

The oval cabochon star ruby within a brilliant cut diamond surround, stamped 14K
Size/dimensions: ring size M
Gross weight: 5.1 grams

£5,000-8,000





75



76



77

75
VAN CLEEF & ARPELS, A PAIR OF DIAMOND SET LEAF EARRINGS
 Each designed as a stylised leaf of textured finish, with an old European cut diamond stem, clip fittings, signed Van Cleef Arpels, numbered S16519, French poinçons
 Size/dimensions: 4.2cm long
 Gross weight: 22.3 grams

£8,000-12,000

76
PIAGET, A DIAMOND SET WRISTWATCH
 The textured oval dial with baton markers within a single cut diamond bezel, case back secured by two screws, integral textured Piaget bracelet, signed Piaget, case back numbered 9806 A 6, 301664, Swiss control mark
 Size/dimensions: case 27mm wide, watch 17.7cm long
 Gross weight: 67.0 grams

Provenance:
 The Property of a Lady of Title

£3,000-5,000

77
A PAIR OF RETRO RUBY AND DIAMOND CLIP BROOCHES
 Of opposing design, each circular cut ruby and diamond cluster within a radiating surround of tapered polished spokes with a single diamond accent, twin prong fittings, unmarked
 Size/dimensions: 4.3 and 4.6cm long
 Gross weight: 29.9 grams

£3,000-5,000

78

A MID 20TH CENTURY SAPPHIRE SET COMPACT

The rectangular reeded case with calibr  cut sapphire scrolled border and push piece, opening to reveal a covered powder compartment and mirror in the lid, unmarked

Size/dimensions: 8.0cm long

Gross weight: 204.6 grams

£6,000-8,000



79

A FANCY LINK NECKLACE AND BRACELET

Each of flattened gaspipe linking with a bolt ring clasp, stamped 750

Size/dimensions: necklace 42.5cm, bracelet 20.0cm long

Gross weight: 128.4 grams

£4,000-6,000



80



81



82

80

A SAPPHIRE AND DIAMOND RING AND EARRING SUITE

Each invisibly set with calibr  cut sapphires between brilliant cut diamond borders, earrings with post and clip fittings, stamped 750

Size/dimensions: ring size approximately H, earrings 2.1cm long

Gross weight: 31.7 grams

Provenance:

The Property of a Lady of Title

£1,800-2,200

81

TIFFANY & CO., TWO MID 20TH CENTURY DISC CHARMS

The first designed as a cow on a radiating disc, engraved 'To Millicent from "her boys", October 3, 1960'; the second designed as an owl with turquoise eyes on a textured disc, engraved 'Anassa Kata... Millicent'; together with a pendant by Fluhler, with a Pointer in a textured frame; and a boxer on a lead in a ropetwist frame, engraved 'From Blithe, 10-3-56', all suspended from a ropetwist bracelet, first two signed Tiffany & Co., third signed Fluhler, all stamped 14K

Size/dimensions: discs 3.2-3.8cm wide

Gross weight: 83.7 grams

£2,500-3,500

82

A DIAMOND DRESS RING

Pav  set to the front with brilliant cut diamonds, mounted in 18ct gold, London hallmark, sponsor's mark TP

Size/dimensions: ring size

Gross weight: 6.0 grams

£250-350



83

83
BOODLE AND DUNTHORNE, A SAPPHIRE AND DIAMOND CLUSTER RING
LONDON, 1993

The oval cut sapphire collet set within a surround set with brilliant cut diamonds between crescent shaped spacers, mounted in 18ct gold, maker's mark B&D, UK hallmark
Size/dimensions: ring size M
Gross weight: 9.4 grams

£1,000-1,500



84

84
LEO DE VROOMEN FOR BOODLES, A DIAMOND SET BRACELET
LONDON, 1993

Designed as 18ct gold square panels with collet set brilliant cut diamond centres on a textured surround within raised borders, between fancy link connectors, signed Boodles, maker's mark L.D.V., UK hallmark
Size/dimensions: 18.5cm long
Gross weight: 32.4 grams

£1,500-2,000



85

85
A GARNET AND DIAMOND DRESS RING

Set with a rectangular cut red garnet with canted corners collet set on a bi-coloured broad tapered band with ropetwist borders and triangular and brilliant cut diamond accents, stamped 18ct
Size/dimensions: ring size K
Gross weight: 18.0 grams

Provenance:
The Property of a Lady of Title

£2,000-3,000



86

86
AN EMERALD AND DIAMOND DRESS RING
LONDON 1966

Of abstract design, the 18ct gold textured tendrils accented with circular cut emeralds and diamonds, maker's mark H&M, UK hallmark
Size/dimensions: ring size N
Gross weight: 12.4 grams

£500-800



88

88
AN OPAL AND DIAMOND DRESS RING
LONDON, 1972

The oval panel collet set with a circular cabochon opal, within a baguette cut diamond surround, within a raised mount of reeded finish, maker's mark AB, UK hallmark
Size/dimensions: ring size J
Gross weight: 12.9 grams

Provenance:
The Property of a Lady of Title

£500-700



87

87
KUTCHINSKY, A DIAMOND SET BROOCH
LONDON, 1970

Designed as a coiled 18ct gold rope and eyelet with thimble, with pavé set brilliant cut diamond terminals and accent, signed Kutchinsky, UK hallmark, maker's mark
Size/dimensions: 5.0cm long
Gross weight: 31.6 grams

£2,500-3,500



89

89
A FRENCH ART DECO DIAMOND
DOUBLE-CLIP BROOCH
CIRCA 1930
Of fan shaped design, with pavé set old
European and single cut diamond scrolls
and lines of baguette and collet set old cut
diamonds, maker's mark MG, French poinçons
Size/dimensions: 7.7cm wide
Gross weight: 46.8 grams

£8,000-12,000



90

90
A MID 20TH CENTURY
DIAMOND BRACELET
CIRCA 1940S
The pierced geometric panels set
throughout with brilliant, baguette and
single cut diamonds, to a concealed
clasp, unmarked
Size/dimensions: 1.8cm wide, 17.5cm long
Gross weight: 44.6 grams

£7,000-10,000



91

91
AN EARLY 20TH CENTURY OPAL
AND DIAMOND RING
The oval cabochon opal framed by
baguette and single cut diamonds,
between diamond shoulders,
numbered 5060
Size/dimensions: ring size M 1/2
Gross weight: 8.4 grams

£2,000-3,000





92

92 Y
NARDI, A SAPPHIRE, EMERALD, RUBY AND DIAMOND 'MORETTO' BROOCH
 The carved tortoiseshell face with a vari-cut ruby, emerald, sapphire and diamond set Egyptian crown with serpent finial, to a similarly set dress, the reverse engraved with hieroglyphs and scroll detail, signed G. Nardi, stamped 750
 Size/dimensions: 6.9cm long
 Gross weight: 44.9 grams

Provenance:
 The Property of a Lady of Title

Please be aware that this lot contains material which may be subject to import/export restrictions, due to CITES or Fish & Wildlife regulations. Please note it is the buyer's sole responsibility to obtain any relevant export or import licence.

£3,000-5,000



93

93 Y
NARDI, A SAPPHIRE AND DIAMOND 'MORETTO' BROOCH
 The carved tortoiseshell face, surmounted by an engraved turban, collet set with a sugarloaf cabochon sapphire and set with calibr  cut sapphire and brilliant cut diamond lines and detail, diamond set earrings, to a similarly set tunic, pierced and scrolling detail to reverse, signed Nardi, 750
 Size/dimensions: 5.0cm long
 Gross weight: 20.6 grams

Provenance:
 The Property of a Lady of Title

Please be aware that this lot contains material which may be subject to import/export restrictions, due to CITES or Fish & Wildlife regulations. Please note it is the buyer's sole responsibility to obtain any relevant export or import licence.

£2,000-3,000



94

94 Y
NARDI, AN OPAL AND DIAMOND 'MORETTO' BROOCH
 The carved tortoiseshell face surmounted by a carved opal turban with brilliant cut diamond band and star detail, diamond set earrings and an engraved and brilliant cut diamond set tunic, pierced and scrolled foliate detail verso, signed G. Nardi, stamped 750
 Size/dimensions: 5.6cm long
 Gross weight: 30.7 grams

Provenance:
 The Property of a Lady of Title

Please be aware that this lot contains material which may be subject to import/export restrictions, due to CITES or Fish & Wildlife regulations. Please note it is the buyer's sole responsibility to obtain any relevant export or import licence.

£2,000-3,000



95

95
AN OPAL AND DIAMOND BANGLE
 The hinged bangle set to front with an oval cabochon opal between heart shaped cabochon opal shoulders, within an openwork surround set with brilliant and single cut diamonds, clasp stamped 14K
 Size/dimensions: inner diameter 6.0cm
 Gross weight: 22.0 grams

£2,500-3,500



96

96
A POLISHED GEM NECKLACE
 The belcher link chain set with tumble polished pink tourmaline, tanzanite, lemon quartz and prehnite beads, the clasp stamped 750
 Size/dimensions: 65.5cm long
 Gross weight: 46.5 grams

£600-800



97 Y
A 19TH CENTURY NOVELTY CHARM CHATELAINE
 The late 19th century chatelaine with fancy links to a central Sampson Mordan & Co. gold croquet mallet propelling pencil, with red guilloché enamel band; a hinged oyster locket, with naturalistic textured surface opening to an oval glazed compartment, with shucker, suspended from belcher link chains; a coral, turquoise and half pearl set bell charm; a carnelian drum charm; a bellows locket, opening to a circular glazed compartment, with watch key fitting; a small box containing bone dice; a ruler stamped Patent; and a coral Cornicello charm
 Size/dimensions: mallet 5.2cm long; oyster shell 2.1cm long
 Gross weight: 44.6 grams

Please be aware that this lot contains material which may be subject to import/export restrictions, due to CITES or Fish & Wildlife regulations. Please note it is the buyer's sole responsibility to obtain any relevant export or import licence.

£1,200-1,800

98
AN ITALIAN LATE 19TH CENTURY MICROMOSAIC BROOCH/PENDANT AND EARRING SET
 CIRCA 1860
 The brooch of circular domed design, decorated with a polychrome micromosaic scene depicting two doves with flowers, reverse with glazed compartment and lock of hair, accompanied by a pair of pendent earrings en suite, hook fittings, some tesserae deficient, earrings with Papal control mark
 Size/dimensions: pendant 3.1cm wide, earrings 6.3cm long
 Gross weight: 30.3 grams

£4,000-6,000

99 Y
A 19TH CENTURY CORAL DOUBLE STICKPIN
 One with a textured mouse with a coral bead to its nose, above a wire knot suspending traditional red and white coral charms comprising a Mano Cornuta, a hand clasping a blade with serpent bracelet, the other with a knotted surmount with orange coral fist with turquoise accented serpent bracelet, with unidentified control mark
 Size/dimensions: first terminal 2.7cm long
 Gross weight: 7.0 grams

Please be aware that this lot contains material which may be subject to import/export restrictions, due to CITES or Fish & Wildlife regulations. Please note it is the buyer's sole responsibility to obtain any relevant export or import licence.

£300-500

100
A LATE 18TH CENTURY ONYX AND ENAMELLED SEAL
 The banded onyx head carved with curls of hair below a turban, to a gold tunic with traces of enamelling, with loop bale and chain attachments, the oval cornelian seal carved with the profile of a bearded man, unmarked
 Size/dimensions: 4.1cm high including loop bale
 Gross weight: 15.3 grams

A selection of similar fob seals can be seen on page 57 of Georgian Jewellery 1714-1830, Ginny Redington Dawes with Olivia Collings, Antique Collectors Club

£400-600

101 Y
A 19TH CENTURY ITALIAN CORAL DOUBLE STICKPIN
 One with a textured mouse above a lovers knot, suspending traditional Italian red and white coral charms comprising the Cornicello, Mano Cornuta and a fish, the other with a knotted surmount with red and white coral Cornicello and a Mano Cornuta with turquoise accented ring and bracelet, unmarked
 Size/dimensions: mouse terminal 2.9cm long
 Gross weight: 5.0 grams

Please be aware that this lot contains material which may be subject to import/export restrictions, due to CITES or Fish & Wildlife regulations. Please note it is the buyer's sole responsibility to obtain any relevant export or import licence.

£300-500



102



103

102

A DIAMOND BEAD NECKLACE

Composed of faceted diamond beads of brown tint interspersed with collet set vari-shaped rose cut diamonds of varying tints, stamped 750

Size/dimensions: 69.0cm long

Gross weight: 15.7 grams

Please note the diamonds are untested for natural colour.

£4,000-6,000

103

A PAIR OF DIAMOND PENDENT EARRINGS

Each composed of rose and brilliant cut diamond cluster panels, mounted in 14 carat gold, UK hallmark

Size/dimensions: 3.5cm long

Gross weight: 8.9 grams

£800-1,200



104

104 Y

AN ITALIAN CORAL AND DIAMOND RING

The oval cabochon coral with brilliant cut diamond set claws, stamped 750 with Italian control marks

Size/dimensions: ring size O

Gross weight: 8.8 grams

Please be aware that this lot contains material which may be subject to import/export restrictions, due to CITES or Fish & Wildlife regulations. Please note it is the buyer's sole responsibility to obtain any relevant export or import licence.

£300-500



105



106

105

A DIAMOND TARGET CLUSTER RING

The oval cluster set with rose and brilliant cut diamonds, unmarked

Size/dimensions: ring size approximately N

Gross weight: 10.6 grams

£600-800

106

A RUBY AND DIAMOND BRACELET

Composed of two lines set with alternating brilliant cut diamond sections and square cut ruby single stones, stamped 750

Size/dimensions: 18.5cm long

Gross weight: 16.2 grams

£3,000-5,000



107

107

A DIAMOND AND RUBY DISC DRESS RING

The concave panel pavé set with circular cut rubies beneath a woven lattice set with single cut diamonds, unmarked

Size/dimensions: panel 2.5cm diameter, ring size N1/2

Gross weight: 7.7 grams

£300-500



108

108
A HELIODOR AND ONYX DRESS RING
LONDON 2021
The step cut heliodor within a polished onyx surround, mounted in 18ct rose gold, UK hallmark
Size/dimensions: ring size N
Gross weight: 8.1 grams

£400-600



109

109
CHANEL, A DIAMOND AND COLOURED SAPPHIRE 'COCO A VENISE' NECKLACE
LONDON 2005
The 18ct gold baton necklace collet set with brilliant cut diamonds and brown diamonds and circular cut orange and yellow sapphires, suspending two similarly set drops with orange tinted freshwater cultured pearl terminals, signed Chanel, numbered 17L 1291, maker's mark, UK hallmark, with white maker's case and card box, zipper pouch, and certificate of authenticity
Size/dimensions: 34.5-38cm long
Gross weight: 22.0 grams

£4,000-6,000



110

110
CHOPARD, A 'HAPPY DIAMONDS' DRESS RING
Designed as an elephant with pavé set brilliant cut diamond ear, to a circular glazed compartment containing a floating diamond, to a reeded shank, signed Chopard, numbered 9168147, 82/2277, stamped 750
Size/dimensions: ring size P 1/2
Gross weight: 18.1 grams

£700-1,000



111

111
A PAIR OF SMOKY QUARTZ, CITRINE AND PERIDOT PENDENT EARRINGS
Each faceted pear shaped smoky quartz drop suspended from an oval cut peridot and citrine with bar connectors, post fittings, unmarked
Size/dimensions: 6.9cm long
Gross weight: 13.8 grams

£300-500



112

112
A CITRINE DRESS RING
LONDON 2017
The oval cut citrine within a radiating 18ct gold surround, UK hallmark and stamped CT-5.26
Size/dimensions: ring size Q
Gross weight: 15.8 grams

£600-800



113

113
A PERIDOT AND DIAMOND PENDANT AND EARRING SET
Each designed as a heart-shaped peridot within a brilliant-cut diamond surround and marquise-cut diamond trio surmount, earrings with clip fittings, pendant stamped 750
Size/dimensions: pendant 2.9cm, earrings 2.1cm long
Gross weight: 24.4 grams

£2,500-3,000



114

114
A CARVED GEM AND CULTURED PEARL NECKLACE AND BRACELET
 The shaped citrine, amethyst, aquamarine and prehnite carved with flowers and foliage, the looped clasps stamped 18K
 Size/dimensions: 68cm long, bracelet 22.5cm long
 Gross weight: 129.2 grams

£700-1,000

115
A FRESHWATER CULTURED PEARL RING LONDON 2017
 The freshwater cultured pearl to tapering matt 18 carat gold shoulders, UK hallmark, maker's mark JLM
 Size/dimensions: ring size M
 Gross weight: 10.4 grams

£400-600



115



116

116
A PAIR OF GREEN AMETHYST PENDENT EARRINGS
 The pear shaped green amethysts within matt settings, shepherds hook fittings, unmarked
 Size/dimensions: 3.5cm long
 Gross weight: 11.0 grams

£250-350





117



119



120



118



121

117 Y
**AN EARLY 20TH CENTURY PORTRAIT
 MINIATURE AND DIAMOND PENDANT**

The lozenge shaped frame with pierced foliate scrolls, set throughout with rose cut diamonds, with a central glazed compartment containing a cut down late George III miniature of a young girl wearing a coral bead necklace, unmarked
 Size/dimensions: 11cm long
 Gross weight: 44.5 grams

Please be aware that this lot contains material which may be subject to import/export restrictions, due to CITES or Fish & Wildlife regulations. Please note it is the buyer's sole responsibility to obtain any relevant export or import licence.

£1,500-2,000

118
**AN ANTIQUE AND LATER EMERALD AND
 DIAMOND BRACELET**

The pear-shaped cabochon emerald in diamond set claw mount, encircled by a rose cut diamond snake with a ruby eye, mounted on a later bracelet accented with millegrain set old European cut diamonds, unmarked
 Size/dimensions: 17.5cm long
 Gross weight: 21.7 grams

£800-1,200

119
**A LATE 19TH CENTURY EMERALD AND
 DIAMOND PENDANT/BROOCH**

CIRCA 1890
 Of quatrefoil design, set with four oval cabochon emeralds around a central old European cut diamond, to an old cut diamond surround and bale, mounted in silver and gold, unmarked
 Size/dimensions: 2.4cm wide
 Gross weight: 7.3 grams

£1,800-2,200

120
A ROSE CUT DIAMOND NECKLACE

The necklace with graduated circular rose cut diamonds with marquise shaped bars between, suspending bow shaped panels with pear shaped rose cut diamond terminals, belcher link back chain, unmarked
 Size/dimensions: diamond section 16.5cm wide
 Gross weight: 30.0 grams

£4,000-6,000

121
A SAPPHIRE AND DIAMOND CLUSTER RING

The oval cut sapphire within a surround of rose cut diamonds in closed back settings, unmarked
 Size/dimensions: ring size O
 Gross weight: 9.5 grams

£1,500-2,000



122
AN ENAMEL, DIAMOND AND PEARL NECKLACE
 EARLY 20TH CENTURY AND LATER
 Designed as white enamel flowerheads and ribbon bows, accented with pearls and rose cut diamonds, to a navette shaped clasp and later pearl set chain
 Size/dimensions: 46.5cm long
 Gross weight: 21.4 grams

Please note the pearls are unwarranted and untested as natural pearl.

£1,500-2,000

123
A SAPPHIRE AND DIAMOND CLUSTER RING
 The cushion shaped sapphire within an old European cut diamond surround, between feathered shoulders, stamped 18ct
 Size/dimensions: ring size R
 Gross weight: 3.9 grams

£500-700



122



124

125

124
A DIAMOND AND PEARL BAR BROOCH
 CIRCA 1920
 The knife edge bar with three pearls with old European cut diamonds between, unmarked
 Size/dimensions: 5.8cm long
 Gross weight: 5.4 grams

Please note the pearls are untested and unwarranted as natural pearl.

£1,200-1,800

125
A LATE 19TH CENTURY SAPPHIRE, PEARL AND DIAMOND BANGLE
 The hinged bangle set with a raised row of alternating sapphires and half pearls, within an old European cut diamond spray surround with sapphire band and pearl accents, unmarked
 Size/dimensions: inner diameter 5.7cm
 Gross weight: 10.4 grams

Please note the pearls are unwarranted and untested as natural pearl.

£700-1,000



126

126
A PAIR OF DIAMOND AND SAPPHIRE EARRINGS
 Each old European cut diamond collet set within a calibr e cut sapphire surround, post fittings, unmarked
 Size/dimensions: 1.2cm long
 Gross weight: 8.2 grams

£10,000-15,000



127

127
A TWO-ROW CULTURED PEARL AND DIAMOND NECKLACE
Composed of two graduated rows of 6.45-9.75mm cultured pearls, to an intertwined loop clasp set with single cut diamonds, unmarked
Size/dimensions: 73.5cm long
Gross weight:106.5 grams

£400-600

128
A PAIR OF DIAMOND DROP EARRINGS
The pierced leaf shaped pediments set with brilliant and single cut diamonds, to articulated brilliant cut diamond drops with a flowerhead shaped panel terminal with polished radiating decoration and central raised claw set brilliant cut diamonds, screw fittings, unmarked
Size/dimensions: 4.2cm long
Gross weight: 8.5 grams

£700-1,000



128



129

129
A DIAMOND AND COLOURED DIAMOND DRESS RING
Set with a graduated line of five brilliant cut yellow diamonds, to a brilliant cut diamond surround and shoulders, stamped 750
Size/dimensions: ring size M
Gross weight: 4.7 grams

Please note the yellow diamonds are untested for natural colour.

£800-1,200



130

130
A DIAMOND PENDANT NECKLACE
Designed as an oval brilliant cut diamond set cirlet, suspending a fringe of collet set diamonds, to a double 18ct white gold fine link chain with diamond spacers, UK hallmark
Size/dimensions: 41.5cm long
Gross weight: 7.8 grams

£700-1,000



131

131
A CAT'S EYE CHRYSOBERYL AND DIAMOND CLUSTER RING
The oval cabochon cat's eye chrysoberyl within a radiating brilliant cut diamond and yellow diamond surround, between diamond shoulders, stamped Pt950
Size/dimensions: ring size N
Gross weight: 6.8 grams

Please note the yellow diamonds are untested for natural colour.

£1,500-2,000



132

132
A PAIR OF DIAMOND SINGLE STONE EARSTUDS
Each brilliant cut diamond in a four claw 18ct gold mount, post fittings, UK hallmark
Size/dimensions: 0.5cm diameter
Gross weight: 1.6 grams

£300-500



133

133
A DIAMOND PENDANT NECKLACE AND EARRINGS
The pendant composed of three marquise cut diamond flowerheads with brilliant cut yellow diamond centres, to a two row 18ct white gold cable link chain spectacle set with brilliant cut diamond accents; together with a pair of marquise cut diamond flowerhead cluster earstuds, mounted in 18ct white gold, UK hallmarks
Size/dimensions: pendant 3.1cm long, chain 40cm long, earrings 1.1cm wide
Gross weight: 10.5 grams

Please note the yellow diamonds are untested for natural colour.

£800-1,200



134



136



135



137



138



139

134
THEO FENNEL, A PAIR OF TOURMALINE AND DIAMOND 'BEE' DROP EARRINGS LONDON 2011
Each designed as an 18ct gold black and yellow bee with engraved wings, suspending a briolette cut green tourmaline to a collet set diamond connector, post fittings, UK hallmark, maker's mark, maker's case and pouch
Size/dimensions: 2.7cm long
Gross weight: 6.5 grams

£1,000-1,500

135
THEO FENNEL, AN EMERALD SET CROSS PENDANT
The 18ct gold Latin cross, centrally set with a circular cut emerald, signed Fennell, maker's mark, UK hallmark, maker's case
Size/dimensions: 2.9cm long
Gross weight: 3.9 grams

£500-800

136
A DIAMOND LINE BRACELET
The bi-colour bracelet collet set with a line of brilliant cut diamonds interspersed with shaped pierced diamond set panels, stamped 750
Size/dimensions: 18cm long
Gross weight: 16.7 grams

£1,000-1,500

137
POMELLATO, A PAIR OF DIAMOND AND SMOKY QUARTZ 'FOREVER' EARRINGS
Each bow surmount set throughout with brilliant cut diamonds of brown tint, suspending a fancy cut smoky quartz drop on a chain connector, post fittings, signed Pomellato, numbered P800001280, Italian control marks
Size/dimensions: 3.0cm long
Gross weight: 8.8 grams

£500-700

138
A CAT'S EYE CHRYSOBERYL AND DIAMOND CLUSTER RING
The oval cabochon cat's eye chrysoberyl within a brilliant cut diamond surround, unmarked
Size/dimensions: ring size N
Gross weight: 3.9 grams

£1,000-1,500

139
A CITRINE RING AND EARRING SUITE LONDON 2018
The ring set with a square step cut citrine with canted corners, the earrings with two graduated similarly cut citrines, mounted in 18ct gold, UK hallmark, maker's mark JLM
Size/dimensions: ring size N, earrings 2.9cm long
Gross weight: 16.8 grams

£700-1,000



140



141



142



143



144



145



146

140
A PAIR OF DIAMOND PENDENT EARRINGS
 LONDON 2004
 Each openwork crescent shaped pediment suspending a trio of diamond set bars with spectacle set brilliant cut diamond drops, mounted in 18 carat white gold, UK hallmark, TP maker's mark, in Mappin & Webb case
 Size/dimensions: 4.3cm long
 Gross weight: 6.4 grams

£2,000-3,000

141
A DIAMOND PENDANT NECKLACE
 The 18ct white gold crescent shaped and bar surmount suspending three articulated drops, set throughout with brilliant cut diamonds, with spectacle set diamond terminals, to a brilliant cut diamond spectacle set 18ct white gold chain, UK hallmark, sponsor's mark TP, in Mappin & Webb case
 Size/dimensions: pendant 5.0cm, chain 46.0cm long
 Gross weight: 6.0 grams

£2,000-3,000

142
A DIAMOND AND TSAVORITE GARNET DRESS RING
 The concave panel pavé set with circular cut tsavorite garnets beneath a woven lattice set with single cut diamonds, unmarked
 Size/dimensions: panel 2.5cm diameter, ring size N 1/2
 Gross weight: 8.1 grams

£300-500

143
AN EMERALD AND DIAMOND DRESS RING
 The hexagonal cut emerald, to a brilliant cut diamond square panel surround and shoulders, stamped 750
 Size/dimensions: ring size M
 Gross weight: 4.4 grams

£600-800

144
ASPREE, A PAIR OF EMERALD AND DIAMOND EARRINGS
 Each cabochon emerald within a pavé set brilliant cut diamond petal surround, mounted in 18ct gold, post and clip fittings, signed APlc, UK import mark, Italian control marks
 Size/dimensions: 1.7cm long
 Gross weight: 13.3 grams

£1,500-2,000

145
A PAIR OF DIAMOND PENDENT EARRINGS
 Each designed as two graduated rows of pavé set brilliant cut diamond hearts, terminating in pear-shaped diamond drops in diamond surrounds, clip fittings, stamped 750
 Size/dimensions: 5.0cm long
 Gross weight: 34.3 grams

£2,000-3,000

146
A PAIR OF AMETHYST, PERIDOT AND DIAMOND EARRINGS
 Each set with a step cut amethyst and peridot with canted corners, within a surround of brilliant cut diamonds, clip fittings, stamped 18k 750
 Size/dimensions: 2.0cm long
 Gross weight: 11.6 grams

£400-600



147



149



148



150

147

AN EMERALD ETERNITY RING

LONDON, 1975

Channel set with a line of rectangular step cut emeralds, in a platinum mount, UK hallmark
Size/dimensions: ring size K
Gross weight: 6.6 grams

Provenance:

The Property of a Lady of Title

£700-1,000

148

A DIAMOND ETERNITY RING

Set with a continuous row of baguette cut diamonds, unmarked
Size/dimensions: ring size K
Gross weight: 7.8 grams

Provenance:

The Property of a Lady of Title

£1,000-1,500

149

A PAIR OF DIAMOND PENDENT EARRINGS

Each pear shaped swing centre set with a cushion shaped diamond beneath an old cut diamond trio, within two openwork old cut diamond surrounds, to diamond set pierced foliate panels, suspended from an old cut diamond cluster, post fittings, composite, unmarked
Size/dimensions: 6.0cm long
Gross weight: 16.9 grams

£5,000-7,000

150

AN EARLY 20TH CENTURY EMERALD AND DIAMOND RING

The rectangular mixed cut emerald within a surround of old cut diamonds, between diamond accented trifurcated shoulders, unmarked
Size/dimensions: ring size N 1/2
Gross weight: 4.5 grams

Offered for sale with a Gemmological Certification Services (GCS) report, no. 5786-2374, dated 30th April 2026, stating:

Variety: Natural Emerald

Origin: Colombia

Comment: Minor amount of oil in fissures

£4,000-6,000





151

151
A GEM SET JABOT PIN
 Each tapered terminal of openwork design, millegrain set with cushion shaped and circular cut sapphires and rubies and old European and rose cut diamonds, stamped 15ct, 18ct
 Size/dimensions: 8.7cm long
 Gross weight: 11.0 grams

£1,000-1,500



152

152
AN EARLY 20TH CENTURY PEARL AND DIAMOND BRACELET
 Designed as a graduated line of millegrain set old European cut diamonds interspersed with five 4.07-5.04mm pearls between pierced, rose cut diamond set borders, unmarked
 Size/dimensions: 18.5cm long
 Gross weight: 23.0 grams

Please note the pearls are unwarranted and untested as natural pearl.

£5,000-7,000



153

153
A DIAMOND ETERNITY RING
 Set with brilliant cut diamonds, with foliate and floral chased sides, unmarked
 Size/dimensions: ring size N 1/2
 Gross weight: 4.9 grams

£700-1,000



154

154
AN ART NOUVEAU SAPPHIRE AND DIAMOND RING
 CIRCA 1910
 The oval cut sapphire millegrain set between pierced tapered shoulders set with old European and rose cut diamonds, unmarked
 Size/dimensions: ring size L 1/2
 Gross weight: 2.1 grams

£300-500



155

155
AN EARLY 20TH CENTURY MABÉ PEARL AND DIAMOND BROOCH
 The rectangular openwork plaque centrally millegrain set with a mabé pearl, to an old cut diamond accented frame and sides, unmarked
 Size/dimensions: 4.0cm long
 Gross weight: 6.4 grams

£400-600



156

156
AN EARLY 20TH CENTURY PEARL NECKLACE
 The graduated row of 1.8-5.3mm pearls, to a single cut diamond set pierced marquise shaped clasp, unmarked, in a red leather Hunt & Roskell Ltd. case
 Size/dimensions: 44cm long
 Gross weight: 4.8 grams

Please note the pearls are untested and unwarranted as natural pearl.

£300-500



157

157
AN ART DECO DIAMOND, ONYX AND CHRYSOPRASE JABOT PIN
 CIRCA 1920
 Each terminal set with a circular cabochon chrysoprase to a rose cut diamond and onyx tapered base, unmarked
 Size/dimensions: 7.6cm long
 Gross weight: 4.8 grams

£300-500



158
A 1930S DIAMOND PENDANT NECKLACE
 The pieced oval links set with brilliant cut diamonds, to box clasp, replaced tongue stamped PL
 Size/dimensions: 44.0cm long
 Gross weight: 23.0 grams

£5,000-7,000

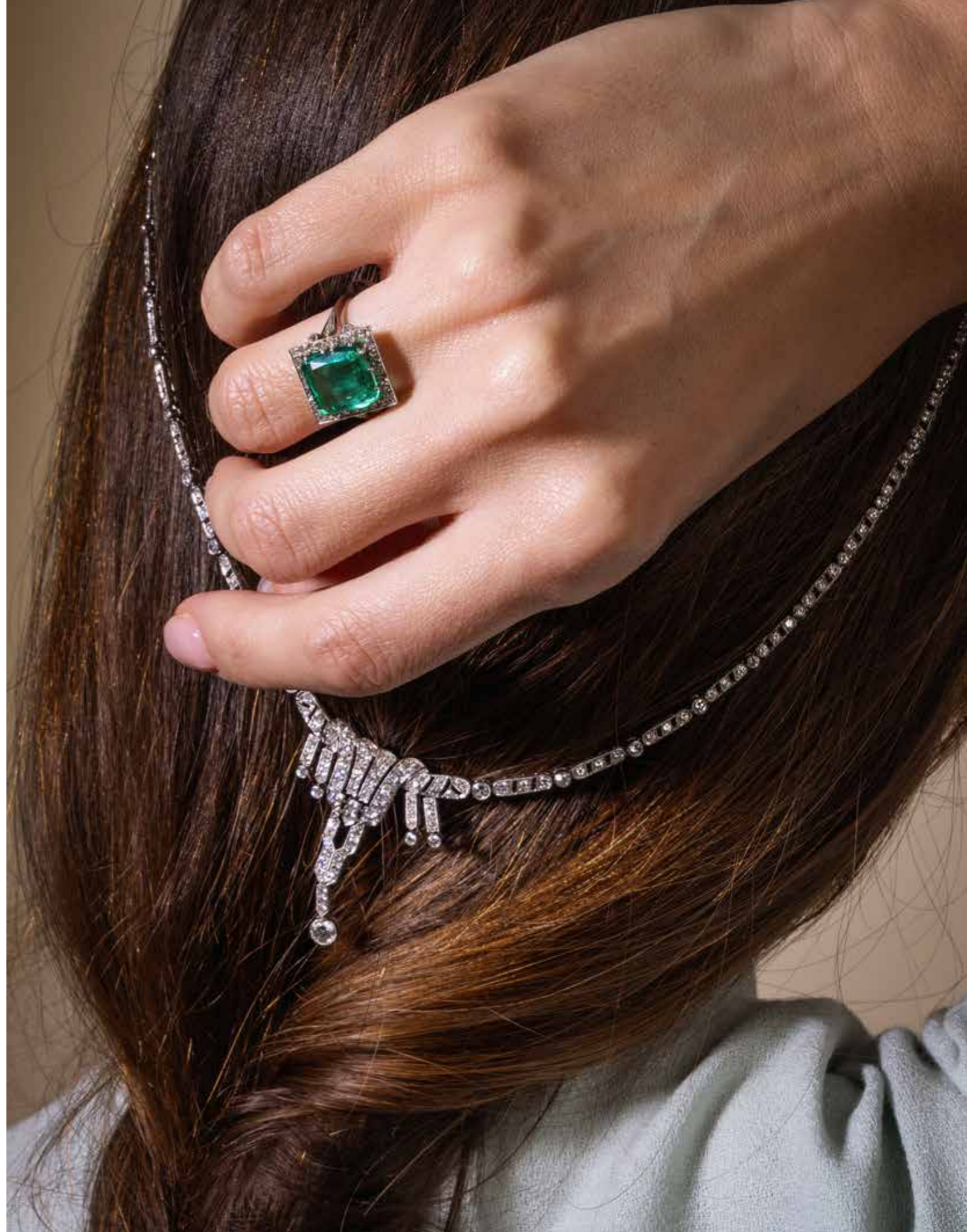
159
A DIAMOND ETERNITY RING
 Set with a continuous row of old European cut diamonds, with scrolled foliate chased sides, stamped 18ct
 Size/dimensions: ring size O 1/2
 Gross weight: 4.6 grams

£400-600

160
**ATTRIBUTED TO CARTIER,
 A DIAMOND SPRAY BROOCH**
 Of scrolling spray design, set with lines of baguette and brilliant cut diamonds, later pin fitting, unsigned, numbered 19120, with a Cartier case
 Size/dimensions: 5.2cm long
 Gross weight: 13.6 grams

Provenance:
 The Property of a Lady of Title

£2,500-3,500





161

161
A 9CT GOLD NECKLACE AND BRACELET SET
Of brick link design with bi-colour centre and clasp, UK import mark
Size/dimensions: bracelet 19.5cm long, necklace 42cm long
Gross weight: 77.8 grams
£1,500-2,000



162

162
AN EMERALD AND DIAMOND PENDANT NECKLACE
The oval cabochon emerald within an openwork surround collet set with princess cut diamonds, to an 18ct gold trace link chain, pendant mount stamped 14k
Size/dimensions: pendant 2.0cm, chain 40.5cm long
Gross weight: 4.0 grams
£1,500-2,000



163

163
A PAIR OF DIAMOND EARRINGS
Each collet set brilliant cut diamond suspended from a similarly set surmount, post fittings, unmarked
Size/dimensions: 1.9cm long
Gross weight: 5.7 grams
£1,000-1,500



164

164
MAPPIN & WEBB, A PAIR OF DIAMOND HOOP EARRINGS LONDON 1996
Each brilliant cut diamond collet set in an 18 carat gold reeded hoop, UK hallmark, maker's mark, maker's case
Size/dimensions: 1.5cm long
Gross weight: 8.6 grams
£800-1,200



165

165
ELSA PERETTI FOR TIFFANY & CO., A PENDANT BRACELET
The oval hooped links suspending a polished rectangular drop, signed Tiffany & Co., Elsa Peretti Spain, stamped 750
Size/dimensions: 16.5cm long, pendant 2.5cm long
Gross weight: 15.5 grams
£700-1,000



166

166
A GEM SET NECKLACE
The shaped faceted amethysts, blue topaz, citrine and yellow topaz in spectacle settings, the lobster claw clasp stamped 750
Size/dimensions: 65.0cm long
Gross weight: 65.7 grams
£1,500-2,000



167
A PAIR OF EMERALD PENDENT EARRINGS
 Each collet set pear-shaped emerald drop, suspended from a 22ct gold hook fitting, UK hallmark, maker's mark LAO
 Size/dimensions: 4.5cm long
 Gross weight: 9.0 grams

£3,000-5,000

168
AN EMERALD BANGLE
 The broad bangle collet set with step cut emeralds with canted corners, engraved foliate detail, unmarked
 Size/dimensions: inner width 6.5cm
 Gross weight: 55.2 grams

£2,000-3,000

169
AN EMERALD AND DIAMOND LINE NECKLACE
 Designed as a graduated alternating line of circular cabochon emeralds and old European cut diamonds, unmarked
 Size/dimensions: 43.0cm long
 Gross weight: 39.0 grams

£18,000-25,000





170



172



171



173



174



176



175

170

A GEORGIAN AND LATER DIAMOND SET MOURNING RING

The blue and white enameled urn with diamond detail upon a blue glass panel within an old mine cut diamond border, engraved 'Robt Dinwiddie Esqr ob 27 July 1770 aet 78', to a later shank

Size/dimensions: ring size R 1/2

Gross weight: 7.9 grams

Robert Dinwiddie (1693-1770) was a Scottish born colonial administrator who served as lieutenant governor of Virginia from 1751 to 1758. An experienced imperial official and former customs administrator in Bermuda, he worked to strengthen colonial administration and promote British expansion in North America. Dinwiddie played a leading role in the beginning of the French and Indian War by supporting British claims in the Ohio Valley.

He authorised the then 21 year old George Washington's first diplomatic expedition to Fort Le Boeuf in the winter of 1753/4 which later led to the Washingtons only military surrender at Fort Necessity in July of 1754.

£800-1,200

171

A REGENCY PANEL RING

CIRCA 1820

The rectangular panel with chased floral decoration to the border and a central locket panel within a polished surround, to trifurcated polished and floral shoulders, reeded shank, unmarked

Size/dimensions: ring size M

Gross weight: 4.3 grams

£150-250

172

A VICTORIAN MOURNING RING

BIRMINGHAM 1877

The 18ct gold band spelling *In Memoriam* on a black enamel ground, the inside of the shank inscribed *St John Wells Thorpe died May 12. 1878*, UK hallmark, A&S maker's mark

Size/dimensions: ring size M 1/2

Gross weight: 2.4 grams

Reverend St. John Wells Thorpe was Vicar at Manuden, Essex. He was born on 15 July 1814 at Thoresthorpe, Lincolnshire. He married Margaret Anne Suckling, daughter of Reverend Alfred Inigo Fox Suckling and Lucy Clementina Clarke, in October 1849 at Bishops Stortford, Hertfordshire, England, and together they had 9 children. He died on 12 May 1878 at the age of 63 in London.

£150-250

173

A MID 18TH CENTURY ENAMEL MOURNING RING

The scrolled band reading 'Sarah Cornewall OB 2 Mar 1750, AE 70', mounted in gold, maker's mark CD

Size/dimensions: ring size K

Gross weight: 5.3 grams

£400-600

174

A DIAMOND AND AMETHYST SWAG NECKLACE

EARLY 20TH CENTURY AND LATER

The swag front millegrain set with old European cut diamonds, suspending a central square cut amethyst with canted corners, on a shaped single cut diamond set openwork panel, to a fancy link chain

Size/dimensions: 44.5cm long

Gross weight: 9.2 grams

£1,200-1,800

175

A LATE 19TH CENTURY DIAMOND AND ENAMEL NOVELTY BROOCH

Designed as a rose cut diamond and enamel cat looking over the neck of a mandolin, wrapped with a rose cut diamond banner, decorated with enamel detail, mounted in silver and gold, unmarked

Size/dimensions: 5.5cm wide

Gross weight: 11.5 grams

£1,500-2,000

176

ROYAL INTEREST, AN EDWARDIAN ENAMEL AND DIAMOND BROOCH

CIRCA 1900

With the rose cut diamond cypher ER beneath a ruby set crown for Edward VII, set on a pink guilloché enamel ground, within a foliate old European and single cut diamond surround, mounted in silver and gold, unmarked

Size/dimensions: 2.4cm wide

Gross weight: 9.2 grams

£1,000-1,500



177

179

180

178

177 Y
BULGARI, A MOTHER-OF-PEARL AND DIAMOND 'DIVA'S DREAM' PENDANT NECKLACE
 The fan shaped drop inset with mother-of-pearl panels and brilliant cut diamond sections, to a diamond surmount, suspended from a filed cable link chain, signed Bvlgari, stamped 750, Italian control marks
 Size/dimensions: 46.0cm long
 Gross weight: 11.2 grams

Please be aware that this lot contains material which may be subject to import/export restrictions, due to CITES or Fish & Wildlife regulations. Please note it is the buyer's sole responsibility to obtain any relevant export or import licence.

£2,500-3,500

178
A BLACK DIAMOND BAND RING
 The broad 18ct rose gold band pavé set with graduated circular cut black diamonds, partial Birmingham hallmark, sponsor's mark SF, Italian control marks
 Size/dimensions: approximate ring size M/N (sizing beads)
 Gross weight: 8.7 grams

Please note the black diamonds are untested for natural colour.

£300-500

179 Y
VAN CLEEF & ARPELS, A CORAL AND DIAMOND 'MERCREDI A PARIS' NECKLACE
 Designed as a young girl holding a cluster of balloons, set with cabochon coral and a brilliant cut diamond, to a filed cable link chain, signed VCA, numbered JB009380, French poinçon
 Size/dimensions: 42.0cm long
 Gross weight: 6.0 grams

Please be aware that this lot contains material which may be subject to import/export restrictions, due to CITES or Fish & Wildlife regulations. Please note it is the buyer's sole responsibility to obtain any relevant export or import licence.

£2,000-3,000

180
AN EMERALD AND PINK SAPPHIRE DRESS RING
 The heart shaped emerald to a pavé set circular cut pink sapphire band, stamped 18K 750 GA
 Size/dimensions: ring size N 1/2
 Gross weight: 8.4 grams

£500-700



181



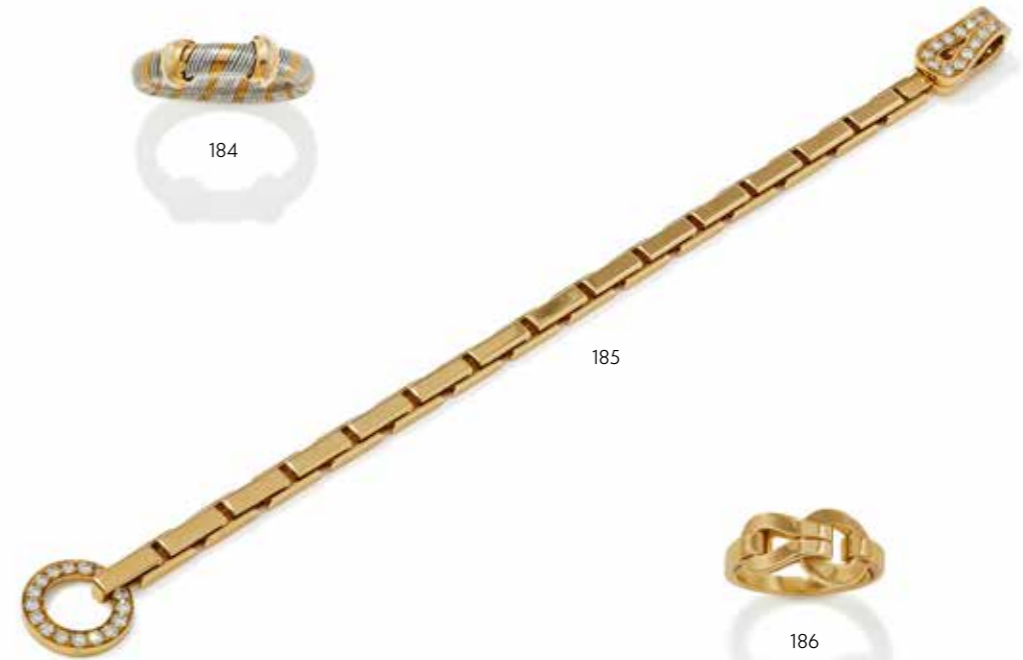
183



182



184



185



186

181
CARTIER, A DIAMOND SET 'LOVE' RING
The polished 18ct gold band inset with brilliant cut diamonds between screwhead motifs, signed Cartier, numbered PYE366, maker's mark, European convention and Swiss control marks, maker's case
Size/dimensions: ring size N
Gross weight: 8.9 grams

£800-1,200

182
CARTIER, A DIAMOND 'LOVE' RING
The pavé set brilliant cut diamond band with screwhead motifs, signed Cartier, numbered OE6984, stamped 750
Size/dimensions: ring size J
Gross weight: 7.8 grams

£1,500-2,000

183
CARTIER, A 'TRINITY' RING
Composed of tri-colour interlocking bands, signed Cartier, French poinçon, stamped 750, maker's pouch
Size/dimensions: ring size M 1/2
Gross weight: 5.5 grams

£300-500

184
ATTRIBUTED TO CARTIER,
A BI-METALLIC BAND RING
The bi-colour wire shank to two 'Trinity' style tri-colour bands, stamped Or Et Acier, numbered 407683, with Cartier pouch
Size/dimensions: ring size S
Gross weight: 6.1 grams

£200-300

185
CARTIER, A DIAMOND SET
'AGRAFE' BRACELET
The 18ct gold brick link bracelet to a brilliant cut diamond set hook and loop clasp, signed Cartier, numbered 14704A, maker's mark, French poinçon, partial UK hallmark, common control mark, with red maker's case
Size/dimensions: 19.0cm long
Gross weight: 29.5 grams

£3,000-5,000

186
CARTIER, AN 18CT GOLD 'AGRAFE' RING
Of loop and buckle design, to a polished band, signed Cartier, numbered GK1864, Swiss and common control marks, French poinçon and maker's mark, with red maker's case and certificate of authenticity
Size/dimensions: ring size M
Gross weight: 8.2 grams

£700-1,000



187



188



189



190



191



193



192



194

187
CARTIER, A DIAMOND AND GEM SET 'PASHA' RING
The circular panel with a lattice of brilliant cut diamonds above faceted gemstones including tanzanite, peridot and aquamarine, signed Cartier and stamped 750, numbered NP009
Size/dimensions: ring size O 1/2
Gross weight: 24.2 grams

£2,000-3,000

188
A SAPPHIRE AND DIAMOND BRACELET
Composed of oval openwork single cut diamond links, between calibré cut sapphire connectors, stamped 750
Size/dimensions: 17.4cm long
Gross weight: 11.8 grams

£2,500-3,500

189
TIFFANY & CO., A PAIR OF DIAMOND SINGLE STONE EARRINGS
Each brilliant cut diamond in a platinum four claw mount, post fittings, signed T&Co., UK hallmark
Size/dimensions: 0.6cm long
Gross weight: 2.1 grams

£1,200-1,800

190
A PAIR OF SAPPHIRE AND DIAMOND EARRINGS
The step cut sapphires with pierced geometric surmounts, and diamond drops, with diamond set bars and princess cut diamond set surmounts, post fittings, stamped pt950
Size/dimensions: 3.8cm long
Gross weight: 6.8 grams

£800-1,200

191
A PAIR OF SAPPHIRE, DIAMOND AND CULTURED PEARL PANEL EARRINGS
The pierced acanthus leaf panels set with rose cut diamonds and a central pear cut sapphire, cultured pearl borders, unmarked
Size/dimensions: 2.cm long
Gross weight: 11.2 grams

£300-500

192
A PAIR OF SAPPHIRE AND PINK SAPPHIRE PENDENT EARRINGS
Of opposing design, suspending either an oval cut sapphire or pink sapphire, to a circular cut sapphire and pink sapphire line surmount, post fittings, unmarked
Size/dimensions: 3.4cm long
Gross weight: 5.4 grams

£700-1,000

193
A RUBY ETERNITY RING
Set with a continuous row of square cut rubies, unmarked
Size/dimensions: ring size K
Gross weight: 3.2 grams

Provenance:
The Property of a Lady of Title

£400-600

194
A SAPPHIRE ETERNITY RING
Set with a continuous row of square cut sapphires, unmarked
Size/dimensions: ring size L
Gross weight: 3.5 grams

Provenance:
The Property of a Lady of Title

£400-600



195

195
A MORGANITE AND DIAMOND
DRESS RING

The oval cut morganite, to a brilliant cut diamond border and bifurcated shoulders, stamped Pt950

Size/dimensions: ring size N
Gross weight: 9.4 grams

£1,200-1,800



196

196
GARRARD, A PAIR OF DIAMOND
'HUMMINGBIRD' PENDANT EARRINGS

Each designed as a detachable pear-shaped openwork plaque, designed as a hummingbird among flowers, pavé set with brilliant cut diamonds and a pear shaped diamond body, to a diamond set hook surmount and pear shaped diamond drop, mounted in 18ct white gold, signed Garrard Austria, UK hallmark

Size/dimensions: 5.7cm long
Gross weight: 10.9 grams

£8,000-12,000



197

197
AN AQUAMARINE AND
DIAMOND PENDANT

The pear-shaped aquamarine within a brilliant cut diamond surround, suspending a diamond set fringe, to a diamond set fleur-de-lys surmount, mounted in platinum, suspended from a platinum fancy link chain, UK hallmarks

Size/dimensions: pendant 5.1cm, chain 40.5cm long
Gross weight: 15.7 grams

£2,000-3,000



198



200



201



203



199



202

198
A LATE 19TH CENTURY FRESHWATER PEARL AND DIAMOND BROOCH

Designed as a crescent, set with a graduated row of freshwater pearls with old European cut diamond accents, signed M.E.&S., stamped 585
Size/dimensions: 6.7cm long
Gross weight: 15.3 grams

Please note the pearls are unwarranted and untested as natural pearl.

£300-500

199
A DIAMOND AND PEARL ARROW BROOCH
LATE 19TH CENTURY AND LATER

The arrow set throughout with old mine and old European cut diamonds, with a central pearl accent, unmarked, in a fitted red leather case
Size/dimensions: 8.8cm long
Gross weight: 10.7 grams

Please note the pearl is untested and unwarranted as natural pearl

£1,000-1,500

200
A PAIR OF LATE 19TH CENTURY DIAMOND PENDENT EARRINGS

Each designed as a scrolled shell set with old and rose cut diamonds and a central old European cut diamond, suspended from an old and rose cut diamond flowerhead surmount, mounted in silver and gold, later post fittings
Size/dimensions: 3.4cm long
Gross weight: 14.0 grams

£4,000-6,000

201
AN EARLY 20TH CENTURY PEARL AND DIAMOND BROOCH

The graduated crossover rows of pearls to old cut and rose cut diamond set detail, unmarked
Size/dimensions: 3.8cm long
Gross weight: 10.0 grams

Please note the pearls are untested and unwarranted as natural pearl.

£500-800

202
A PAIR OF DIAMOND CLUSTER EARRINGS

Each designed as a cluster of old European cut diamonds, post fittings
Size/dimensions: 1.1cm long
Gross weight: 3.5 grams

£600-800

203
AN EARLY 20TH CENTURY PEARL AND DIAMOND FLORAL BROOCH

The central rose cut diamond and pearl set flowerhead within a spiralling surround with leaf and pearl detail, unmarked
Size/dimensions: 2.6cm wide
Gross weight: 5.8 grams

Please note the pearls are unwarranted and untested as natural pearl.

£300-500



204

204

A LATE 19TH CENTURY PASTE AND DIAMOND CORONET

Of wreath and ribbon design, connected by spectacle set paste chains, to a ribbon bow band, set throughout with circular cut paste, old and rose cut diamonds, unmarked, cased by W. Phillips, 492 Oxford S, London

Size/dimensions: 42cm long, 10.5cm high without frame

Gross weight: 226.7 grams

Formerly the property of Winifred Cochrane, Countess of Dundonald (née Bamford-Hesketh, 16 April 1859 - 16 January 1924)

£2,500-3,500

Winifred Cochrane, Countess of Dundonald (née Bamford-Hesketh; 16 April 1859 - 16 January 1924)

was a Welsh philanthropist, heiress, and noblewoman. Winifred had been born an immensely wealthy heiress, the only surviving child of Robert Bamford-Hesketh. Abergele's Gwrych Castle formed the core of this fortune, but the estate itself stretched across most of North Wales into Lancashire, Cheshire, Staffordshire and Derbyshire. Winifred had an arranged marriage to a Scottish nobleman, the 12th Earl of Dundonald, who later acquired international fame by leading the charge at the Relief of Ladysmith, during the Boer War. Sadly, the marriage was not entirely happy and as a consequence, the Earl spent most of his time in Scotland, whilst his wife remained in her Welsh homeland. It was this distinct self-awareness and passion for nationhood on both sides which contributed to the Earl and Countess leading two separate lives.

The Countess was a prominent patron of Welsh culture, deeply committed to the language, arts, and national identity. A Welsh speaker, she saw herself as the last of the Lloyds of Gwrych and was honoured as a bard at the 1910 National Eisteddfod under the name "Rhiannon." She supported music and literature, founded a harp competition, published poetry, and championed artists, including women.

Her interests extended to architecture, philanthropy, and scholarship: she commissioned works at St Asaph Cathedral, funded buildings, established two World War I hospitals, supported archaeological research, and engaged in political and social causes, including women's work and tariff reform.

Winifred was an extraordinary woman for her times; she single-handedly managed her landed estates totalling several thousand acres - a rare circumstance for a Victorian woman. In religious affairs, she was a leading light during the disestablishment of the Church in Wales, later becoming one of its founding members in 1920; her generosity was immense as she gifted a large quantity of diamonds and rubies for the crozier of the Archbishop as well as for the processional cross of St. Asaph Cathedral. It is quite possible that some of these diamonds came from the tiara or the coronet, lot 204 and 205.

On her death in 1924, she sought to leave Gwrych Castle to King George V and the then Prince of Wales, bringing an end to a thousand years of private family ownership. The offer was declined, and the estate passed instead to the Venerable Order of Saint John.

Four years later, her widower repurchased the castle for £78,000, funding the purchase by selling off its contents. According to local legend, this decision left the Countess restless in death. It is said that she haunts the castle, angered by the dispersal of her belongings, with some claiming that her spirit—or another ghostly figure—can be seen wandering the grounds in a white dress.





205

205

A LATE 19TH CENTURY PASTE TIARA

Of tapered design, composed of dog rose flowerheads, buds and leaves, set throughout with circular cut paste, detachable into five segments, dog roses detachable, no further fittings provided, case by Streeter & Co. 18 New Bond Street
Size/dimensions: front section 6.8cm deep without frame, 28.5cm long
Gross weight: 186.3 grams

Formerly the property of Winifred Cochrane, Countess of Dundonald (née Bamford-Hesketh, 16 April 1859 - 16 January 1924)

£3,000-5,000





206

206
A PINK SAPPHIRE, DIAMOND AND CULTURED PEARL CHOKER
 MID 19TH CENTURY AND LATER

The antique cartouche centrally set with a cushion shaped pink sapphire in a foiled closed back mount, within a scrolling surround set throughout with old European and old mine cut diamonds, later mounted on a five-row cultured pearl choker, with an old European cut diamond bar clasp
 Size/dimensions: 33.0cm long
 Gross weight: 99.6 grams

£4,000-6,000



207

207
A MID 19TH CENTURY DIAMOND
FLORAL SPRAY BROOCH

The principal flowerhead set en tremblant, to foliate sprays and further smaller flower heads, set throughout with old mine cut diamonds, mounted in silver and gold, unmarked
 Size/dimensions: 5.2cm wide
 Gross weight: 13.9 grams

£3,000-5,000



208

208
A LATE 19TH CENTURY DIAMOND
HEART LOCKET

The heart set throughout with old European cut diamonds, to a similarly set surmount, glazed reverse, mounted in silver and gold, unmarked
 Size/dimensions: 2.7cm wide
 Gross weight: 15.0 grams

£4,000-6,000



209

209
A PAIR OF PEARL AND DIAMOND PENDANTS

The 12.25 and 12.04mm drop shaped pearls of silver and cream tone with old European cut diamond surmounts
 Size/dimensions: 1.7cm long
 Gross weight: 3.1 grams

Provenance:
 The Property of a Lady of Title

£500-700



210

210
AN EARLY 20TH CENTURY FOUR ROW NATURAL PEARL AND DIAMOND NECKLACE

The four graduated rows of 3.2-8.3mm natural pearls on knotted strands, to a detachable old European cut diamond and pearl set pierced panel clasp with four clip fittings, for wear as a two-row necklace, unmarked

Size/dimensions: shortest length 41cm long

Gross weight: 68.5 grams

Provenance:

The Property of a Lady of Title

£15,000-20,000

Offered for sale with a Gemmological Certification Services (GCS) report, no. 5786-2678, dated May 2026, stating:
Variety: Natural Nacreous Pearl
Environment: Saltwater and some freshwater (random test)
Comment: Contains 1 beaded cultured pearl



IMPORTANT NOTICES TO WATCH BUYERS

DAMAGE, RESTORATION, ALTERATION

Although every effort is made to note any damage, restoration or alterations, the absence of any such information in catalogue descriptions does not imply the lot is in perfect condition and free from any such defects. Prospective buyers should satisfy themselves as to the condition of any lot prior to bidding. All watches are serviced from time to time, and Dreweatts are unable to guarantee that the working parts of any watch movement, glass or crystal, winding crowns, watch bracelet, strap or buckle are the manufacturers' original parts, unless otherwise stated in the catalogue description. We are unable to make any representation in our catalogue descriptions or condition reports as to the authenticity of such parts. Dreweatts are unable to make any representation, nor make any comment on, the authenticity of diamonds, or other gemstones, set into watch dials, bezels, cases and bracelets.

AUTHENTICATION

All watch movements have been inspected by Dreweatts watchmaker and specialists, and we have verified all inventory and movement numbers. For the information of potential bidders, all inventory and movement numbers are listed in the catalogue description for the relevant lot.

IMPORT/EXPORT RESTRICTIONS

There may be Import Restrictions into some territories outside the United Kingdom placed on certain watch brands, or on the importation of watches with straps composed of animal skins which may fall under CITES Regulations. It is the sole responsibility of the buyer to comply with all Export/Import regulations and potential bidders are strongly recommended to check with their shipping agent as to any such regulations that may apply to any lot. Dreweatts are not shippers and are unable to offer any advice regarding such regulations.

CONDITION REPORTS

Dreweatts condition reports will identify whether a watch functions at the time of cataloguing, and suggest possible, but not comprehensive, restoration work that may need to be carried out for the watch to function properly. Dreweatts are unable to test watches for accuracy or running to time, and we cannot guarantee that any watch will function when purchased from us.

As we have examined all watch movements by removing the case backs, we cannot guarantee that water resistant watches will remain water resistant following purchase from us. Dreweatts recommend that any watch purchased from us is subsequently overhauled by a competent watchmaker to ensure proper functioning.

IMPORTANT NOTICES TO JEWELLERY BUYERS

DAMAGE, RESTORATION, ALTERATION

Although every effort is made to note any damage, restoration or alterations, the absence of any such information in catalogue descriptions does not imply the lot is in perfect condition and free for any such defects. Prospective buyers should satisfy themselves as to the condition of any lot prior to bidding.

ENHANCEMENT

Prospective bidders should be aware that many coloured gems have been historically treated by a variety of methods to improve their appearance, both in terms of colour and transparency. Rubies and sapphires are routinely heat treated, emeralds are enhanced through the use of coloured and transparent oils and resins, and jadeite is routinely stained. These treatments, and others including irradiation and coating, are generally accepted by the jewellery trade as standard practice. Although most treatments are considered to be permanent, those gemstones which have been oiled may need to be re-treated to maintain their appearance. Any such treatments affect the market value of coloured gemstones, and Dreweatts pre-sale estimates published in the catalogue assume that all gemstones, unless otherwise stated in the catalogue, may have been enhanced. Dreweatts may obtain Gemmological Reports from a recognised laboratory where appropriate detailing any enhancements, or lack of, for certain gemstones, and such reports may be obtained for prospective bidders prior to the sale, provided such requests are made at least three weeks before the sale, and that the requesting party has pre-paid for such a report. However it is not possible for Dreweatts to obtain reports for every stone offered in the sale.

In the absence of a gemmological laboratory report, it is not possible for Dreweatts to make any comment on the possibility that any gemstone in any lot may have been subject to enhancement.

Dreweatts catalogue descriptions and condition reports adhere to the guidelines laid out in the 'Blue Book' of CIBJO, the International Jewellery Confederation.

WEIGHTS

All gram weights have been obtained using an electronic balance, but weights stated in the catalogue are approximate and for guidance only, and potential bidders should satisfy themselves as to their accuracy.

'...approximately 1.20 carats total,...' all such stone weights are estimated using standard equipment and formulae, and are subject to the limitations imposed by the mount.

'...weighing 1.20 carats,...' where the description reads as such, the stones in question have been removed from the mount and weighted using an electronic balance.

SIGNATURES

'...by Laclouche,...' in our opinion is a piece made by or for the jeweller, bearing relevant signatures, maker's marks, and where appropriate, the maker's inventory number/s.

'...signed Laclouche,...' in our opinion is a piece retained by the jeweller, but not necessarily made by them. This may also mean that the piece has been mounted by the jeweller using stones supplied by the client; a special commission from a client's design; or has been altered or later added to.

Detailed condition reports for all lots are available from our website www.dreweatts.com, and upon direct request to the Saleroom.

Please note that Dreweatts are unable to give verbal condition reports for any lot, and all condition reports will be given in writing via our website www.dreweatts.com. Dreweatts jewellery specialists and qualified gemmologists are available during the view to answer any queries.

Dreweatts are unable to offer any form of packing, dispatch or shipping services, and clients should make their own collection arrangements for purchased lots. Dreweatts are happy to suggest the services of a number of dispatch and shipping carriers.

Please see [Conditions of Business](#) and [Conditions of Sale](#) on the following pages.

Dreweatts & Dreweatts 1759 are trading names of Dreweatts 1759 Ltd. Dreweatts 1759 Ltd is registered in England, company number: 10758982, registered office: C/O Bishop Fleming LLP, 10 Temple Back, Bristol, BS1 6FL.

IMPORTANT NOTICES

BUYING AT DREWEATTS

There are several ways you can bid at a Dreweatts auction; in person, by leaving a commission or absentee bid, on the telephone where available and live via the internet – please make arrangements before the sale. THIS NOTICE APPLIES ONLY TO A PERSON WHO WISHES TO BID IN PERSON, OR BY LEAVING A COMMISSION OR ABSENTEE BID, AT A DREWEATTS PUBLIC AUCTION. For bidding at an online auction or for online bidding at a public auction please see our [Online Auction Terms](#) published on our website at www.dreweatts.com.

BIDDING IN PERSON

If intending to buy you are required to register your name and details at reception prior to the commencement of the auction. You will be required to provide a proof of identity and address to register for bidding. You will then be allocated a bidding number, which you use when bidding for an item.

COMMISSION BIDS

Dreweatts will execute bids on your behalf if you are unable to attend the sale. Commission or absentee bids are accepted either directly at reception, or can be sent by post, fax, email, telephone or via the website: www.dreweatts.com.

Dreweatts will add these bids to the auctioneers' sale book and will undertake to purchase the lots on your behalf as cheaply as allowed by other bids and reserves. If two buyers submit identical commission bids Dreweatts may prefer the first bid received.

Dreweatts does not accept liability for failing to execute commission bids, or for any errors or omissions.

CONDITION

Bidders must satisfy themselves as to the condition of each lot. Condition reports are available on request – see the [Conditions of Business](#) at the back of this catalogue forming part of these Auction Terms and Conditions for more information regarding condition reports. Requests for condition reports must be submitted by 4pm on the day prior to the auction; condition reports may be available alongside the lot description on the online catalogue at: www.dreweatts.com.

COMMISSION CHARGES

All purchases are subject to a buyer's premium, which is charged per lot at 27% of the hammer price (32.4% including VAT) up to and including £20,000, 26% (31.2% including VAT) of the hammer price from £20,001 up to and including £500,000, 20% of the hammer price (24% including VAT) in excess of £500,001. A theta symbol (θ) indicates that the lot is a zero rated item and therefore not subject to VAT on the buyer's premium. This applies to bound books (manuscripts and printed), unframed maps and albums. In the event the lot has a dagger (†) beside the lot number in the catalogue, this indicates that the lot is owned by an entity or company required to pay VAT (generally not an Antique Dealer, as they operate under a dealers margin scheme). VAT is payable at 20% on the Hammer Price. Lots marked with a double dagger (‡) (presently a reduced rate of 5%) or Ω (presently at standard rate of 20%) have been imported from outside the UK under Temporary Admission regime and therefore the buyer must pay the import VAT at the appropriate rate on the duty inclusive hammer price.

PAYMENT

Payment will be accepted, if you are a successful bidder, by debit card issued in the name of the Buyer by a UK bank and registered to a UK

billing address; by all major UK issued credit cards issued in the name of the Buyer and registered to a UK billing address with the exception of Diners Club; by bank transfer direct into our bank account, Bank Details: NatWest, 30 Market Place, Newbury, Berkshire RG14 5AG. Account Name: Dreweatts 1759 Ltd. A/C: 62412949, Sort Code: 60-15-07, BIC: NWBKGB2L, IBAN: GB21NWBK60150762412949. The name of the bank account holder should match the name of the buyer. First time buyers who are not present at the saleroom are requested to pay by bank transfer.

Y CITES REGULATIONS

Please note that lots marked with the symbol (Y) in this catalogue may be subject to CITES Regulations when exported. Relevant CITES Regulations may be found at www.gov.uk/guidance/cites-imports-and-exports.

COLLECTION OR DELIVERY

Before being able to collect your purchases you are required to pay the hammer price, plus the applicable commissions, and obtain a receipt acknowledging payment. Collection of the purchased lots is at the purchaser's risk and expense and whilst Dreweatts do not provide packing and despatch service we can suggest some carriers.

Dreweatts also require that all purchased items are collected within four working days of the sale to avoid a storage charge being applied.

STORAGE CHARGES

All items not collected by 4pm, within four working days of the sale, will be automatically removed to commercial storage and subject to a minimum storage charge of £20 (plus VAT) per lot and to a further storage charge of £3 (plus VAT) per lot per part or full day thereafter. These charges will be the sole liability of the purchaser and will be billed directly to them by Sackville-West Moving & Storing; Sackville-West Moving & Storing may be willing to adjust their charges if they are instructed by the purchaser to deliver to them. On payment of all sales and storage costs, items will be available for collection by appointment from Sackville-West Moving & Storing (Andover), tel: + 44 (0) 2080 909988, email: office@sackvillewest.co.uk. These charges are set by Sackville-West Moving & Storing; we recommend that you contact them directly regarding queries relating to these charges and other questions relating to storage. Staff at the saleroom will be unable to answer questions relating to items that have been removed from the saleroom.

FURTHER INFORMATION

The colours printed in this catalogue are not necessarily a true reflection of the actual item. All weights and measures given in the catalogue should be regarded as approximate.

VALUATION SERVICES

Dreweatts provides a range of confidential and professional valuation services to private clients, solicitors, executors, estate managers, trustees and other professional partners. These services include auction valuations, insurance valuations, probate valuations, private treaty valuations, valuations for family division or for tax purposes. For more information, please see our website: www.dreweatts.com.

For directions to Donnington Priory, please see our website: www.dreweatts.com.

Parking is available at Donnington Priory in two car parks on either side of the saleroom.

INFORMATION FOR BUYERS AT PUBLIC AUCTIONS

1. **INTRODUCTION.** The following notes are intended to assist Bidders and Buyers, particularly those inexperienced or new to our salerooms. All of our auctions and sales are conducted on our printed Auction Terms and Conditions, including these Conditions of Sale and Business, which are readily available for inspection and normally accompany catalogues. Our staff will be happy to help you if there is anything you do not fully understand.

Any particular auction and/or any particular lot in an auction may be subject to different or additional terms which will be published in our auction catalogue. All auctions and sales of wines and spirits, jewellery, watches and clocks are subject to the special terms set out in the relevant Notices in relation to those items published in our auction catalogue and, in the event of any conflict or inconsistency, those special terms prevail over any other terms in our Auction Terms and Conditions. By bidding at the auction, you agree to be bound by these terms.

2. **AGENCY.** As auctioneers we usually act as agents for the seller whose identity, for reasons of confidentiality, is not normally disclosed. Accordingly if you buy at auction your contract for the item or items purchased is with the seller and not with us as the auctioneer.

3. **ESTIMATES.** Estimates are designed to help buyers gauge what sort of sum might be involved for the purchase of a particular lot. Estimates may change and should not be thought of as the sale price. The lower estimate may represent the reserve price and certainly will not be below it. Estimates do not include the Buyer's Premium or VAT (where chargeable). Estimates are prepared some time before the sale and may be altered by announcement before the sale. They are in no sense definitive.

4. **BUYER'S PREMIUM.** The Conditions of Sale forming part of our Auction Terms and Conditions require the buyer to pay a buyer's premium on the hammer price of each lot purchased. The buyer's premium is 27% of the hammer price up to and including £20,000, 26% of the hammer price from £20,001 up to and including £500,000, and 20% of the hammer price in excess of £500,001. VAT at the prevailing rate of 20% is added to buyer's premium and additional charges as defined below.

5. **VAT.** A theta symbol (θ) indicates that the lot is a zero rated item and therefore not subject to VAT on the buyer's premium. This applies to bound books (manuscripts and printed), unframed maps and albums. A dagger symbol (†) indicates that VAT is payable by the purchaser at the standard rate (presently 20%) on the hammer price as well as being an element in the buyer's premium. This imposition of VAT is likely to be because the seller is registered for VAT within the United Kingdom and is not operating the Dealers Margin Scheme. A beta symbol (β) indicates that the lot is under Bond and, if released for delivery to a UK address, will additionally incur UK Excise Duty and 20% VAT charged on both Excise Duty and hammer price. A double dagger (‡) indicates that the lot is being sold whilst subject to temporary importation and that import VAT at the reduced rate (currently 5%) calculated on the hammer price is due. (Ω) Indicates that the lot is being sold whilst subject to temporary importation and that import VAT at the standard rate (currently 20%) calculated on the hammer price (inclusive of any applicable duty) is due. Lots offered subject to temporary importation (\ddagger or Ω) require relevant customs procedure to be completed prior to the property leaving Dreweatts' premises or being exported. Dreweatts will issue the instruction to a customs broker or shipper upon receipt of full payment for the lots. The import VAT charged for lots with symbols \ddagger or Ω can be refunded if Dreweatts is instructed to re-export the property or if the VAT liability is transferred to another Temporary Admission authorisation. Lots which appear without the above symbols indicate that no VAT is payable on the hammer price; this is because such lots are sold using the Auctioneers Margin Scheme and it should be noted that the VAT included within the buyer's premium is not recoverable as input tax.

6. **DESCRIPTION AND CONDITION.** Condition reports are provided on our website or upon request. The absence of a report does not imply that a lot is without imperfections. The detail in a report will reflect the estimated value of the lot. Large numbers of such requests received shortly before the sale may mean that reports cannot be provided for all lots. Members of staff are not trained restorers or conservators and, particularly for higher value lots, you should obtain an opinion from such a professional. Dreweatts is not liable for damage to gilded picture frames, plaster picture frames or picture frame glass; if a Lot is or becomes dangerous, we may dispose of it without notice to bidders in advance in any manner we see fit and will be under no liability for doing so. We recommend that you always view a lot in person.

We are dependent on information provided by the seller about a lot and whilst we may inspect lots and act reasonably in taking a general view about them we are normally unable to carry out a detailed examination and frequently no examination of lots in order to ascertain their condition in the way in which it would be wise for a buyer to do. Intending buyers have ample opportunity for inspection of goods and, therefore, accept responsibility for inspecting and investigating lots in which they may be interested and the corresponding risk should they not do so.

Please note carefully the exclusion of liability for the condition of lots contained in the Conditions of Sale. Neither the seller nor we, as the auctioneers, accept any responsibility for their condition. In particular, mechanical objects of any age are not guaranteed to be in working order. However, in so far as we have examined the goods and make a representation about their condition in the auction catalogue, we shall be liable for any defect which is not reflected in that representation and which that examination ought to have revealed to the auctioneer but which would not have been revealed to the buyer had the buyer examined the goods. Additionally, in specified circumstances lots misdescribed because they are 'deliberate forgeries' may be returned and repayment made. There is a 3 week time limit. (The expression 'deliberate forgery' is defined in our Conditions of Sale).

7. **ELECTRICAL GOODS.** These are sold as 'antiques' only and if bought for use must be checked over for compliance with safety regulations by a qualified electrician before use.

8. **EXPORT OF GOODS.** Buyers intending to export goods should ascertain (a) whether an export licence is required and (b) whether there is any specific prohibition on importing goods of that character because, e.g. they may contain prohibited materials such as ivory. Ask us if you need help.

Private overseas buyers can only receive goods free of VAT or have the VAT amount refunded if Dreweatts acts as exporter in relation to the sale, the goods are exported within 3 months of the sale and Dreweatts is in possession of adequate export documents. The VAT refunds are available for transactions exceeding £2,500. If you arrange for the goods to be picked up/delivered to you directly in the UK, we will charge UK VAT at the appropriate rate and no refund will be available. Please note, buyers are responsible for completing the importation procedures as well as the payment of any relevant duty/VAT payable on importation into the destination country.

Where the purchase has been made in the business or trading name, VAT refund will be available on proof of export provided within 3 months of the sale.

9. **BIDDING.** Bidders will be required to register before the sale commences and lots will be invoiced to the name and address on the sale registration form. Bidders are required to provide a government issued identity document and a proof of address. Please enquire in advance about our arrangements for telephone bidding.

10. **COMMISSION BIDDING.** Commission bids may be left with the auctioneers indicating the maximum amount to be bid excluding buyer's premium. Dreweatts will add these bids to the auctioneers' sale book and they will be executed as cheaply as possible having regard to the reserve (if any) and competing bids. If two buyers submit identical commission bids the auctioneers may prefer the first bid received. Please enquire in advance about our arrangements for the leaving of commission bids by telephone or fax. Dreweatts does not accept liability for failing to execute commission bids, or for any errors or omissions.

11. **METHODS OF PAYMENT.** Payment will be accepted, if you are a successful bidder, by debit card issued in the name of the Buyer by a UK bank and registered to a UK billing address; by all major UK issued credit cards issued in the name of the Buyer and registered to a UK billing address with the exception of Diners Club; by bank transfer direct into our bank account, Bank Details: NatWest, 30 Market Place, Newbury, Berkshire RG14 5AG. Account Name: Dreweatts 1759 Ltd. A/C: 62412949, Sort Code: 60-15-07, BIC: NWBKGB2L, IBAN: GB21NWBK60150762412949. The name of the bank account holder should match the name of the buyer. First time buyers who are not present at the saleroom are requested to pay by bank transfer.

12. **COLLECTION AND STORAGE.** Please note what the Conditions of Sale state about collection and storage. It is important that goods are paid for and collected promptly. Any delay may involve the buyer in paying storage charges.

13. **ARTIST'S RESALE RIGHT (DROIT DE SUITE) ROYALTY CHARGES.** Under Artist's Resale Right (ARR) UK art market professionals (including, but not limited to, auctioneers, art dealers and galleries) are required to collect a royalty for works of art produced by qualifying artists each time a work is resold during the artist's lifetime and for a period up to 70 years following the artist's death. This payment is only applicable to qualifying works of art when the hammer price reaches or exceeds £1,000. The charge is calculated on the portions of the hammer price according to the following rate bands:

| Royalty Rate | Portion of the hammer |
|--------------|----------------------------------|
| 4% | up to £50,000 |
| 3% | between £50,000.01 and £200,000 |
| 1% | between £200,000.01 and £350,000 |
| 0.5% | between £350,000.01 and £500,000 |
| 0.25% | in excess of £500,000 |

The royalty charge is capped at £12,500 per artwork. All royalty charges are passed on, no handling costs or additional fees with respect to these charges will be retained by Dreweatts. The ARR charge is VAT exempt. All items in this catalogue that are marked with λ are potentially qualifying items. The charge will be added to the buyer's invoice and must be paid before items can be released to the buyer.

TERMS OF CONSIGNMENT FOR SELLERS IN PUBLIC AUCTIONS

The sale of goods at our public auctions and a seller's relationship with us are governed by our Auction Terms and Conditions including these Terms of Consignment for Sellers in Public Auctions and our Conditions of Sale for Public Auctions. Any particular auction and/or any particular lot in an auction may be subject to different or additional terms which will be published in our auction catalogue or separately announced prior to the auction. All auctions and sales of wines and spirits, jewellery, watches and clocks are subject to the special terms set out in the relevant Notices in relation to those items published in our auction catalogue and, in the event of any conflict or inconsistency, those special terms prevail over any other terms in our Auction Terms and Conditions. Please note that our Auction Terms and Conditions including these Terms of Consignment for Sellers in Public Auctions and our Conditions of Sale for Public Auctions relate to auctions held in our salerooms and we have separate terms and conditions for our online auctions.

If you, or another person acting on your behalf, provide goods to us to sell on your behalf at one of our auctions this signifies that you agree to and will comply with our Auction Terms and Conditions including these Terms of Consignment for Sellers in Public Auctions and our Conditions of Sale for Public Auctions.

1. **INTERPRETATION.** In these Terms the words 'you', 'yours', etc. refer to the Seller and if the consignment of goods to us is made by an agent or otherwise on the Seller's behalf we assume that the Seller has authorised the consignment and that the consignor has the Seller's authority to contract. All obligations that apply to the Seller under these Terms of Consignment for Sellers in Public Auctions shall apply to the owner of the goods and their agent jointly and separately. Similarly the words 'we', 'us', etc. refer to the Auctioneers.

2. **WARRANTY.** The Seller warrants that possession in the lots can be transferred to the Buyer with good and marketable title, free from any third party right and encumbrances, claims or potential claims. The Seller has provided all information concerning the item's ownership, condition and provenance, attribution, authenticity, import or export history and of any concerns expressed by third parties concerning the same.

3. **ALL COMMISSIONS.** and fees are subject to VAT at the prevailing rate.

4. **COMMISSION.** is charged to sellers and all selling terms are available from our salerooms.

5. **REMOVAL COSTS.** Items for sale must be consigned to the saleroom by any stated deadline and at your expense. We may be able to assist you with this process but any liability incurred to a carrier for haulage charges is solely your responsibility.

6. **LOSS AND DAMAGE OF GOODS**

(a) Loss and Damage Warranty - Dreweatts is not authorised by the FCA to provide insurance to its clients, and does not do so. However Dreweatts for its own protection assumes liability for property consigned to it at the lower pre-sale estimate until the hammer falls. To justify accepting liability, Dreweatts makes a charge of 1.5% of the hammer price plus VAT, subject to a minimum charge of £1.50, or if unsold 1.5% of our lower estimate. The liability assumed by Dreweatts shall be limited to the lower pre-sale estimate or the hammer price if the lot is sold. Dreweatts is not liable for damage to gilded picture frames, plaster picture frames or picture frame glass; if the Lot is or becomes dangerous, we may dispose of it without notice to you in advance in any manner we see fit and will be under no liability for doing so.

(b) If the owner of the goods consigned instructs us in writing not to take such action, the goods then remain entirely at the owner's risk unless and until the property in them passes to the Buyer or they are collected by or on behalf of the owner, and clause 6 (a) is inapplicable.

7. **ILLUSTRATIONS AND PHOTOGRAPHS.** The cost of any illustrations or photographs is borne by you. The copyright in respect of such illustrations and photographs shall be the property of us, the auctioneers, as is the text of the catalogue.

8. **MINIMUM BIDS AND OUR DISCRETION.** Goods will normally be offered subject to a reserve agreed between us before the sale in accordance with clause 9. We may sell Lots below the reserve provided we account to you for the same sale proceeds as you would have received had the reserve been the hammer price. If you specifically give us a "discretion" we may accept a bid of up to 10% below the formal reserve.

9. **RESERVES**

(a) You are entitled to place prior to the auction a reserve on any lot consigned, being the minimum hammer price at which that lot may be sold. Reserves must be reasonable and we may decline to offer goods which in our opinion would be subject to an unreasonably high reserve (in which case goods carry the storage and loss and damage warranty charges stipulated in these Terms of Consignment).

(b) A reserve once set cannot be changed except with our consent.

(c) Where a reserve has been set which we consider unreasonably high, an unsold charge will be payable in the event that the lots fails to sell, being the agreed selling terms calculated on the reserve, LDW at 1.5% and any photographic charges.

(d) Where a reserve has been placed only we may bid on your behalf and only up to the reserve (if any) and you may in no circumstances bid personally.

(e) Reserves are not usually accepted for lots expected to realise below £100.

10. **ELECTRICAL ITEMS.** These are subject to detailed statutory safety controls. Where such items are accepted for sale you accept responsibility for the cost of testing by external contractors. Goods not certified as safe by an electrician (unless antiques) will not be accepted for sale. They must be removed at your expense on your being notified. We reserve the right to dispose of unsafe goods as refuse, at your expense.

11. **SOFT FURNISHINGS.** The sale of soft furnishings is strictly regulated by statute law in the interests of fire safety. Goods found to infringe safety regulations will not be offered and must be removed at your expense. We reserve the right to dispose of unsafe goods as refuse, at your expense. The rights of disposal referred to in clause 10 and 11 are subject to the provisions of The Torts (Interference with Goods) Act 1977.

12. **DESCRIPTION.** Please assist us with accurate information as to the provenance, lawful import etc. of goods where this is relevant. There is strict liability for the accuracy of descriptions under modern consumer legislation and in some circumstances responsibility lies with sellers if inaccuracies occur. We will assume that you have approved the catalogue description of your lots and that your lots match those descriptions unless informed to the contrary. Where we are obliged to return the price to the buyer when the lot is a deliberate forgery under Condition 15 of the Conditions of Sale and we have accounted to you for the proceeds of sale you agree to reimburse us the sale proceeds and in any event within 7 days of our written notice to do so.

13. **UNSOLD.** If an item is unsold it may at our discretion be re-offered at a future sale. Where in our opinion an item is unsaleable you must collect such items from the saleroom promptly on being so informed. Otherwise, storage charges may be incurred. We reserve the right to charge for storage in these circumstances at a reasonable daily rate.

14. **WITHDRAWN AND BOUGHT IN ITEMS.** You may revoke your instruction to sell the consigned goods by providing us with a written notice (Withdrawal Notice). In the event that you withdraw goods from sale at the time when the goods have been researched, catalogued and prepared for sale, you will pay us Withdrawn Fees calculated as follows:

(a) Vendor Commission charged at the rate agreed in your Consignment Agreement and applied to the mid-estimate; and

(b) Other fees agreed in your Consignment Agreement, such as the Loss and Damage Warranty fee (applied to the mid-estimate) and Illustration fee; and

(c) Any other expenses borne by us in preparing the lot for sale, such as costs of restoration, third-party appraisals, permits and licences; and

(d) A fee equivalent to the Buyer's Premium, charged at the rate applicable to the sale in which the lots would be offered and calculated at the mid-estimate.

All above fees will be subject to VAT at the prevailing rate (currently 20%). You must remove the withdrawn goods from our storage premises at your own expense within thirty days after the date of the Withdrawal Notice. We will not release any withdrawn goods to you prior to receipt in full of any amounts owed to us, including in relation to any costs borne by us or any advance paid by us against the goods to you or a third party.

15. **CONDITIONS OF SALE.** You agree that all goods will be sold on our Conditions of Sale for Public Auctions. In particular you undertake that you have the right to sell the goods either as owner or agent for the owner with good and marketable title and free and clear of any third party rights or claims. You undertake to compensate us and any buyer or third party for all losses liabilities, costs and expenses suffered or incurred arising out of or in connection with any breach of this undertaking. We will also, at our discretion, and as far as practicable, confirm that an item consigned for sale does not appear on the Art Loss register, which is administered by an independent third party.

16. **DUE DILIGENCE CHECKS AND ANTI-MONEY LAUNDERING PROCEDURES.** Under the money laundering regulations in force we are required to carry out relevant due diligence checks. This includes verifying the identity of all customers we transact with as well as any beneficial owners on behalf of whom they may transact. Vendors who are unable to or refuse to supply required identification documents and proof of address will not be able to consign to Dreweatts auctions. Copies of customer due diligence checks will be stored for as long as it is necessary to satisfy legal requirements in an appropriate storage facility, which for the avoidance of doubt may include storage solely in electronic form. We reserve the right to withhold the monies owed until the vendor provides the information necessary to complete the anti-money laundering checks.

17. **AUTHORITY TO DEDUCT COMMISSION AND EXPENSES AND RETAIN PREMIUM AND INTEREST**

(a) You authorise us to deduct commission at the stated rate and all expenses incurred for your account from the hammer price and consent to our right to retain beneficially the premium paid by the buyer in accordance with our Conditions of Sale for Public Auctions and any interest earned on the sale proceeds until the date of settlement.

(b) In case of lots unsold at auction you authorise us at our discretion to reoffer such lots and negotiate a sale within seven days of the auction date, in which case the same charges will be payable as if such lots had been sold at auction and so far as appropriate these Terms apply.

18. **WAREHOUSING.** We disclaim all liability for goods delivered to our saleroom without sufficient sale instructions and reserve the right to make minimum warehousing charge of £10 per lot per day. Unsold lots are subject to the same charges if you do not remove them within a reasonable time of notification. If not removed within three weeks we reserve the right to sell them and defray charges from any net proceeds of sale or at your expense to consign them to the local authority for disposal.

19. **SETTLEMENT.** After sale settlement of the net sum due to you normally takes place within 28 days of the sale unless the buyer has not paid for the goods or the checks necessary under the current Money Laundering Regulations have not been completed. In this case no settlement will then be made but we will take your instructions in the light of our Conditions of Sale for Public Auctions. You authorise any sums owed by you to us on other transactions to be deducted from the sale proceeds. You must note the liability to reimburse the proceeds of sale to us as under the circumstances provided for in Condition 12 above. You should therefore bear this potential liability in mind before parting with the proceeds of sale until the expiry of 28 days from the date of sale.

CONDITIONS OF SALE FOR PUBLIC AUCTIONS

Dreweatts carries on business with bidders, buyers and all those present in the auction room prior to or in connection with a sale by auction at our salerooms on our Auction Terms and Conditions or Public Auctions including these Conditions of Sale for Public Auctions and all bidders, buyers and others participating in a public auction accept that these terms apply to the exclusion of any terms and conditions contained in any of those person's own documents even if the same purport to provide that that person's own or some other terms prevail. Any particular public auction and/or any particular lot in an auction may be subject to different or additional terms which will be published in our online auction catalogue. Please note that our Auction Terms and Conditions including these Conditions of Sale for Public Auctions relate to auctions held in one of our salerooms and we have separate terms and conditions for our online auctions.

1. DEFINITIONS

In these Conditions:

- (a) "auctioneer" means the firm of Dreweatts or its authorised auctioneer, as appropriate;
- (b) "deliberate forgery" means an imitation made with the intention of deceiving as to authorship, origin, date, age, period, culture or source but which is unequivocally described in the catalogue as being the work of a particular creator and which at the date of the sale had a value materially less than it would have had if it had been in accordance with the description;
- (c) "hammer price" means the level of bidding reached (at or above any reserve) when the auctioneer brings down the hammer;
- (d) "terms of consignment" means the stipulated terms and rates of commission on which Dreweatts accepts instructions from sellers or their agents;
- (e) "total amount due" means the hammer price in respect of the lot sold together with any premium, Value Added Tax chargeable and any additional charges payable by a defaulting buyer under these Conditions;
- (f) "sale proceeds" means the net amount due to the seller, being the hammer price of the lot sold less commission at the stated rate, Value Added Tax chargeable and any other amounts due to us by the seller in whatever capacity and however arising;
- (g) "You", "Your", etc. refer to the buyer as identified in Condition 2.
- (h) The singular includes the plural and vice versa as appropriate.

2. BIDDING PROCEDURES AND THE BUYER

- (a) Bidders are required to register their particulars before bidding by completing a sale registration form and to satisfy any security arrangements before entering the auction room to view or bid;
- (b) Under the money laundering regulations in force we are required to verify the identity of all customers we transact with as well as any beneficiaries on behalf of whom they may transact. Customers who are unable to or refuse to supply required identification documents and proof of address will not be able to bid in Dreweatts auctions. Copies of customer due diligence checks will be stored for as long as it is necessary to satisfy legal requirements in an appropriate storage facility which for the avoidance of doubt may include storage solely in electronic form;
- (c) the maker of the highest bid accepted by the auctioneer conducting the sale shall be the buyer at the hammer price and any dispute about a bid shall be settled at the auctioneer's absolute discretion by reoffering the Lot during the course of the auction or otherwise. The auctioneer shall act reasonably in exercising this discretion.
- (d) Bidders shall be deemed to act as principals;
- (e) Our right to bid on behalf of the seller is expressly reserved up to the amount of any reserve and the right to refuse any bid is also reserved.

3. **INCREMENTS.** Bidding increments shall be at the auctioneer's sole discretion.

4. **THE PURCHASE PRICE.** The Buyer shall pay the purchase price, comprising the hammer price together with a premium charged per lot at the following rates: 27% of the hammer price (32.4% including VAT) up to and including £20,000; 26% (31.2% including VAT) of the hammer price from £20,001 up to and including £500,000; and 20% (24% including VAT) of the hammer price in excess of £500,000. The Buyer shall also be liable for any royalties payable under Droit de Suite and for any taxes indicated by lot symbols (†, ‡, Ω and ⋈), as set out under the Information for Buyers, as well as any applicable Web Premium.

5. **VALUE ADDED TAX.** Value Added Tax on the hammer price is imposed by law on all items affixed with a dagger (†) or double dagger (‡), omega (Ω) and beta (⋈). Value Added Tax is charged at the appropriate rate prevailing by law at the date of sale and is payable by buyers of relevant Lots. (Please refer to "Information for Buyers" for a brief explanation of the VAT position).

6. PAYMENT

- (a) Immediately a Lot is sold you will:
- (i) give to us, if requested, proof of identity, and
- (ii) pay to us the total amount due or in such other way as is agreed by us.
- (b) Any payments by you to us may be applied by us towards any sums owing from you to us on any account without regard to any directions of you or your agent, whether expressed or implied.
- (c) In order to comply with money laundering regulations we reserve the right to require proof of source of funds and/or confirmation of the nature and source of wealth for all receipts of monies from clients directly or from third parties for payments on behalf of clients. Lots will only be released once the appropriate once we have completed necessary checks under the current Money Laundering Regulations.

7. TITLE AND COLLECTION OF PURCHASES

- (a) The ownership of any Lots purchased shall not pass to you until you have made payment in full to us of the total amount due.
- (b) You shall at your own risk and expense take away any lots that you have purchased and paid for not later than 3 working days following the day of the auction after which you shall be responsible for any removal, storage and insurance charges.
- (c) No purchase can be claimed or removed until it has been paid for and we have completed necessary checks under the current Money Laundering Regulations.

8. REMEDIES FOR NON-PAYMENT OR FAILURE TO COLLECT PURCHASES

- (a) If any Lot is not paid for in full and taken away in accordance with these Conditions or if there is any other breach of these Conditions, we, as agent for the seller and on our own behalf, shall at our absolute discretion and without prejudice to any other rights we may have, be entitled to exercise one or more of the following rights and remedies:
- (i) to proceed against you for damages for breach of contract;
- (ii) to rescind the sale of that Lot and/or any other Lots sold by us to you;
- (iii) to resell the Lot (by auction or private treaty) in which case you shall be responsible for any resulting deficiency in the total amount due (after crediting any part payment and adding any resale costs). Any surplus so arising shall belong to the seller;
- (iv) to remove, store and insure the Lot at your expense and, in the case of storage, either at our premises or elsewhere;
- (v) to charge interest at a rate not exceeding 1.5% per month on the total amount due to the extent it remains unpaid for more than 3 working days after the sale;
- (vi) to retain that or any other Lot sold to you until you pay the total amount due;
- (vii) to reject or ignore bids from you or your agent at future auctions or to impose conditions before any such bids shall be accepted;
- (viii) to apply any proceeds of sale of other Lots due or in future becoming due to you towards the settlement of the total amount due and to exercise a lien (that is a right to retain possession of) any of your property in our possession for any purpose until the debt due is satisfied.
- (b) We shall, as agent for the seller and on our own behalf pursue these rights and remedies only so far as is reasonable to make appropriate recovery in respect of breach of these conditions.

9. **THIRD PARTY LIABILITY.** All bidders, buyers and other members of the public on our premises are there at their own risk and must note the layout of the accommodation and security arrangements. Accordingly neither the auctioneer nor our employees or agents shall incur liability for death or personal injury or for the safety of the property of persons visiting prior to or at a sale (except in each case as may be required by law by reason of our negligence)

10. **COMMISSION BIDS.** Whilst prospective buyers are strongly advised to attend the auction and are always responsible for any decision to bid for a particular Lot and shall be assumed to have carefully inspected and satisfied themselves as to its condition, we will if so instructed clearly and in writing execute bids on their behalf. Neither the auctioneer nor our employees or agents shall be responsible for any failure to do so.

Where two or more commission bids at the same level are recorded we reserve the right in our absolute discretion to prefer the first bid so made.

11. **WARRANTY OF TITLE AND AVAILABILITY.** The seller warrants to the auctioneer and you that the seller is the true owner of the property consigned or is properly authorised by the true owner to consign for sale and is able to transfer good and marketable title to the property free from any third party claims.

Save as expressly set out above, all other warranties, conditions or other terms which might have effect between the Seller and you, or us and you, or be implied or incorporated by

statute, common law or otherwise are excluded to the fullest extent permitted by law.

12. **AGENCY.** The auctioneer normally acts as agent only and disclaims any responsibility for default by sellers or buyers.

13. **TERMS OF SALE.** The seller acknowledges that Lots are sold subject to the stipulations of these Conditions in their entirety and on the Terms of Consignment for Public Auctions as notified to the consignor at the time of the entry of the Lot.

14. DESCRIPTIONS AND CONDITION

(a) Whilst we seek to describe lots accurately, it may be impractical for us to carry out exhaustive due diligence on each lot. Prospective buyers are given ample opportunities to view and inspect before any sale and they (and any independent experts on their behalf) must satisfy themselves as to the accuracy of any description applied to a lot. Prospective buyers also bid on the understanding that, inevitably, representations or statements by us as to authorship, genuineness, origin, date, age, provenance, condition or estimated selling price involve matters of opinion. We undertake that any such opinion shall be honestly and reasonably held and accept liability for opinions given negligently or fraudulently. Subject to the foregoing neither we the auctioneer nor our employees or agents nor the seller accept liability for the correctness of such opinions and all conditions and warranties, whether relating to description, condition or quality of lots, express, implied or statutory, are hereby excluded. Dreweatts is not liable for damage to gilded picture frames, plaster picture frames or picture frame glass; if the Lot is or becomes dangerous, we may dispose of it without notice to you in advance in any manner we see fit and will be under no liability for doing so. This Condition is subject to the next following Condition concerning deliberate forgeries and applies save as provided for in paragraph 6 "information to buyers".

(b) Private treaty sales made under these Conditions are deemed to be sales by auction for purposes of consumer legislation.

15. **FORGERIES.** Notwithstanding the preceding Condition, any Lot which proves to be a deliberate forgery (as defined) may be returned to us by you within 21 days of the auction provided it is in the same condition as when bought, and is accompanied by particulars identifying it from the relevant catalogue description and a written statement of defects. If we are satisfied from the evidence presented that the Lot is a deliberate forgery we shall refund the money paid by you for the Lot including any buyer's premium provided that (1) if the catalogue description reflected the accepted view of scholars and experts as at the date of sale or

(2) you personally are not able to transfer a good and marketable title to us, you shall have no rights under this condition.

The right of return provided by this Condition is additional to any right or remedy provided by law or by these Conditions of Sale.

16. **PRIVACY NOTICE.** We will hold and process any personal data in relation to you in accordance with our current privacy policy, a copy of which is available on our website www.dreweatts.com/privacy-policy/.

GENERAL

17. We shall have the right at our discretion, to refuse admission to our premises or attendance at our auctions by any person.

18. (a) Any right to compensation for losses liabilities and expenses incurred in respect of and as a result of any breach of these Conditions and any exclusions provided by them shall be available to the seller and/or the auctioneer as appropriate.

(b) Such rights and exclusions shall extend to and be deemed to be for the benefit of employees and agents of the seller and/or the auctioneer who may themselves enforce them.

19. Any notice to any buyer, seller, bidder or viewer may be given by first class mail, email or Swiftmail in which case it shall be deemed to have been received by the addressee 48 hours after posting.

20. Special terms may be used in catalogue descriptions of particular classes of items in which case the descriptions must be interpreted in accordance with any glossary appearing at the commencement of the catalogue.

21. Any indulgence extended to bidders, buyers or sellers by us notwithstanding the strict terms of these Conditions or of the Terms of Consignment shall affect the position at the relevant time only and in respect of that particular concession only; in all other respects these Conditions shall be construed as having full force and effect.

22. These Conditions shall be governed by and construed in accordance with English law and the parties irrevocably submit to the exclusive jurisdiction of the English courts.

DREWEATTS

NEWBURY

Dreweatts
Donnington Priory
Newbury
Berkshire RG14 2JE
+44 (0) 1635 553 553
info@dreweatts.com

LONDON

Dreweatts
16-17 Pall Mall
St James's
London SW1Y 5LU
+44 (0) 20 7839 8880
info@dreweatts.com

HAMBRIDGE LANE

Dreweatts
1 Hambridge Lane
Newbury
Berkshire RG14 5TU
+44 (0) 1635 553 553
info@dreweatts.com

GROUP DEPARTMENTS

CHIEF EXECUTIVE OFFICER

Henry House

CHAIRMAN

Will Richards

ASIAN CERAMICS AND WORKS OF ART

Mark Newstead
Dr Yingwen Tao
Mark Hinton (Japanese consultant)
Jon Adjetej (Japanese consultant)
Qinyi He
asian@dreweatts.com

JEWELLERY

Charlotte Peel
Tessa Parry
Gemma Johnson
jsw@dreweatts.com

LIVE STEAM AND MODEL ENGINEERING WORKS OF ART

Lucie Hobbs
transport@dreweatts.com

MARKETING

Tori Billington
Kerry Matthews
Sophia Woods
Francesca Newman
Seb Harding
marketing@dreweatts.com

BRITISH AND EUROPEAN SCULPTURE AND WORKS OF ART

Silas Currie Leigh-Wood
sculpture@dreweatts.com

CLOCKS AND SCIENTIFIC INSTRUMENTS

Leighton Gillibrand
clocks@dreweatts.com

COUNTRY SPORTING

Geoffrey Stafford Charles
gscarles@dreweatts.com

FURNITURE AND CARPETS

Ben Brown
James Lees
Elaine Binning
Ashley Matthews
Mitchell Tompkins
Sophie Davies
furniture@dreweatts.com

HOUSE SALES AND PRIVATE COLLECTIONS

Joe Robinson
Peter Horwood
Rosie Jarvie
Eloise Kerr-Smiley
Arabella Methuen
Henry Jones
housesales@dreweatts.com

MODERN AND CONTEMPORARY ART

Jennie Fisher
Francesca Walsh
Will Porter (Business Development)
Sarah Hobrough
Sophie Roe
pictures@dreweatts.com

MODERN DESIGN AND DECORATIVE ART

Gemma Sanders
Geoffrey Stafford Charles
Ashley Matthews
Luke McGurk
design@dreweatts.com

OLD MASTER, BRITISH AND EUROPEAN ART

Brandon Lindberg
Lucy Darlington
Daniele Amesso
Isabelle Rietkerk
Beatrix Stark
pictures@dreweatts.com

SILVER, WATCHES AND OBJECTS OF VERTU

James Nicholson (Deputy Chairman)
Nick Mann
Gemma Johnson
jsw@dreweatts.com

WINE

Mark Robertson
Violette Jongbloed
wine@dreweatts.com

CONSIGNMENT MANAGEMENT

Lucie Hobbs
Christy Chambers
consignments@dreweatts.com

VALUATIONS FOR PROBATE, INSURANCE AND CGT

Emma Terry
Janice Cliff
valuations@dreweatts.com

PHOTOGRAPHERS AND VIDEOGRAPHERS

Dave Pincott
Jack Curtis Joyce
Chris Kennedy
Amber Martin
Zoltan Miklosi
James Stabler
Seb Harding



DREWEATTS
EST. 1759